



Microsoft Windows 10 IoT Enterprise for Wyse 7040 Thin Client Maintenance Release 4 Release Notes

Software releases are created to correct defects, make enhancements, or add new features. These releases are tested on all current, actively shipping platforms and operating systems as applicable. This release notes contain details on the supported platforms, any changes in the configuration settings and licensing details as well. The bug fixes along with the workarounds are documented in the release notes. Any changes in the feature functionality from an end-user perspective are listed with the description of each feature at a high level.

Current Version: 0A79

Release Date: August 2018

Previous Version: 0A62

Contents

Release type and definition.....	1
New features.....	2
Boot sequence in BIOS.....	2
Supported peripherals.....	2
System preparation tool—Sysprep UI.....	3
Unified Write Filter.....	6
ENERGY STAR specifications.....	8
Support matrix.....	8
Fixed issues.....	10
Known issues.....	10
Device manager components and driver versions.....	11
Operating system components.....	13
Application, feature, and file details	14
Installed product details.....	15
Quick Fix Engineering—QFE details.....	17
Used and free space information.....	18
Important notes.....	18

Release type and definition

This maintenance release (MR4) is for Wyse 7040 thin client—0A79 build that runs Windows 10 IoT Enterprise operating system

NOTE: There are no further maintenance releases for Wyse 7040 thin client with Windows 10 IoT Enterprise.

CAUTION: Please follow proper write filter and Windows Page File usage instructions at all times. Such instructions include making sure that the write filter is enabled during regular use and is disabled only temporarily by an administrator when required for image upgrades, applying security patches, registry changes and application installation. The write filter should be re-enabled as soon as such tasks are completed. Such instructions further include never enabling the Windows Page File feature during regular use of the thin client. Any operation of a Dell Wyse Windows Embedded Thin Client with the write filter that is turned off during regular use and/or with the Windows Page file enabled will prematurely wear out your Flash/SSD storage, decrease performance and decrease the lifespan of the product. Dell is not responsible for, and will not, warrant, support, repair or replace any thin client device or component that fails to operate properly due to a failure to follow these instructions.

New features

- Wyse Device Agent (WDA) is updated to v14.2.0.51.
- Boot Agent (BA) is updated to v3.7.7.
- VMware Horizon Client is updated to v4.8.
- Citrix Receiver is updated to v4.11.
- Citrix HDX RealTime Media Engine is updated to v2.4.
- Dell Thin Client Application is updated to v10.0.0.20.
- Windows Defender is updated to v1.271.738.0.
- Dell KM632 wireless keyboard caps lock indicator is updated to v2.1.11.1 to address the unquoted service path vulnerability issue.
- Unified Write Filter tray utility—**UWFTray.exe** is updated to v1.0.4.12.
- UWFSvc—**UWFsvc.exe** is updated to v1.0.4.12.
- Wyse Easy Setup v1.0.1.3289 is integrated.
- Win+L key is enabled.
- C-A-D map is enabled by default.
- QFEs are installed until June 2018.
- Realtek high definition audio driver is updated to v6.0.1.6122.
- Dell Command | Monitor is updated to v9.3.0.222.
- Intel ME driver is updated to v11.7.0.1054.
- Intel HD graphics driver is updated to v21.20.16.4821.

Boot sequence in BIOS

Table 1. Boot sequence in BIOS

Boot priority order	Component
First boot	Windows Boot Manager
Second boot	Merlin Non-Pxe
Third boot	Onboard NIC (IPv4)

Supported peripherals

- Dell Pro stereo headset UC300
- Dell USB soundbar—AC511
- Dell 2.0 speaker system—AE215
- Jabra Pro 935 MS wireless headset (Mono)
- Logitech B525HD webcam
- Dell Tray Load CD/DVD player (DW316)
- Dell USB wired keyboard—KB216

- Dell USB wired optical mouse—MS116
- Dell USB wired laser mouse
- Dell 24 Monitor—E2417H
- Dell 23 Monitor—E2316H
- Dell 22 Monitor—E2216H
- Dell 22 Monitor—E2216HV
- Dell 20 Monitor—E2016H
- Dell 20 Monitor—E2016HV
- Dell 20 Monitor—E2016
- Dell 19 Monitor—E1916H
- Dell 19 Monitor—E1916HV
- Dell 27 Monitor—P2717H
- Dell 24 Monitor—P2417H with stand
- Dell 23 Monitor—P2317H
- Dell 22 Monitor—P2217H with stand
- Dell 20 Monitor—P2017H
- Dell 22 Monitor—P2217
- Dell 24 Monitor—MR2416
- Dell 24 Monitor—P2415Q 4K2K (UHD)
- Dell Mono unmanaged printer—E515dn
- Dell Color unmanaged printer—E525w
- Dell Mono managed printer—C2660dn
- Dell Color managed printer—S5840cdn
- DP to HDMI converter
- DP to DVI converter
- DP to VGA converter

System preparation tool—Sysprep UI

The System Preparation tool **Sysprep.exe** can be used with other deployment tools to install Microsoft Windows operating systems. The installation can be completed with minimal intervention by an administrator.

Sysprep.exe calls other executable files during Windows installation. **Sysprep.exe** is located in the `%WINDIR%\system32\sysprep` directory. The file must run from the `%WINDIR%\system32\sysprep` directory, and the Windows version on which it is installed.

The following features are not supported in this release:

- There is no integrated administrator account.
- Microsoft has removed the following Windows 10 features in this release:
 - Measured boot
 - Fast Boot
 - Refresh PC and Reset PC
 - Anti malware
 - Custom branding
 - WIM boot
 - Bing sports
 - Xbox Live
 - Skype
 - Zune videos

- Zune music
- People
- Windows communication software
- Office note
- Maps
- Bing news
- Store app
- Edge
- Cortana
- Boot from USB is not supported, enable this option in BIOS.
- Native PXE imaging support is not available in this version as the boot mode is set to UEFI.
- The following lockdown features are not supported:
 - USB filter
 - Keyboard filter
 - Gesture filter
- Embedded Lockdown Manager is not supported.

Running Custom Sysprep tool

Prerequisite

- Disable Unified Write Filter.
- Logging framework must be available on your thin client.
- PowerShell script execution environment, Custom Sysprep, Configuration Sysprep (SCCM) scripts, and Hostname calculation feature must be available.
- Reduce the flash drive or hard drive size to less than 32 GB.

About this task

When you access the operating system using Custom Sysprep, it is configured according to OEM specification or customer requirement. The information in the user interface is saved as configuration files (.xml) and is used for the Custom Sysprep process. To run the Custom Sysprep tool, do the following:

Steps

- 1 Go to <drive C>\Windows\Setup.
- 2 Right-click **Build_Master.cmd**, and select **Run as administrator**.
The **Config Master** window is displayed.

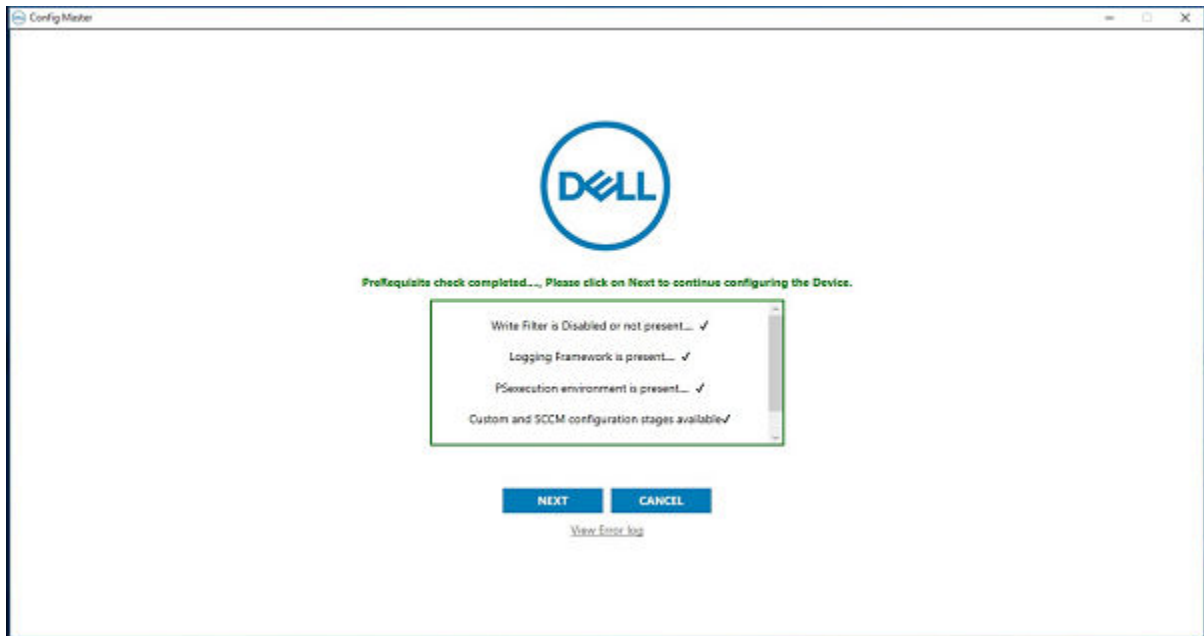


Figure 1. Config Master

- 3 Click **Next**.
The **Configuration** screen is displayed.

Configurations

Custom configuration
 SCCM configuration

Host Name calculation

Enable
 Disable
 Retain current settings

Configure Domain options

User Name:

Password :

Domain :

OU : Configure OU option **Save Credentials**

Configure local account credentials

Enable local account credential changes

Figure 2. Configurations

- 4 Select **Custom configuration** in the **Configurations** section.
- 5 Enable or disable hostname calculation in the **Host Name calculation** section.

- 6 Enter the appropriate values in the **Configure Domain options** section, and click **Save Credentials**.
- 7 Click **OK** when prompted.
- 8 Select **Enable local account credentials changes**.
The changes that are made to the credentials are applied.
- 9 Click **Next**.
The **Credentials Manager** page is displayed.

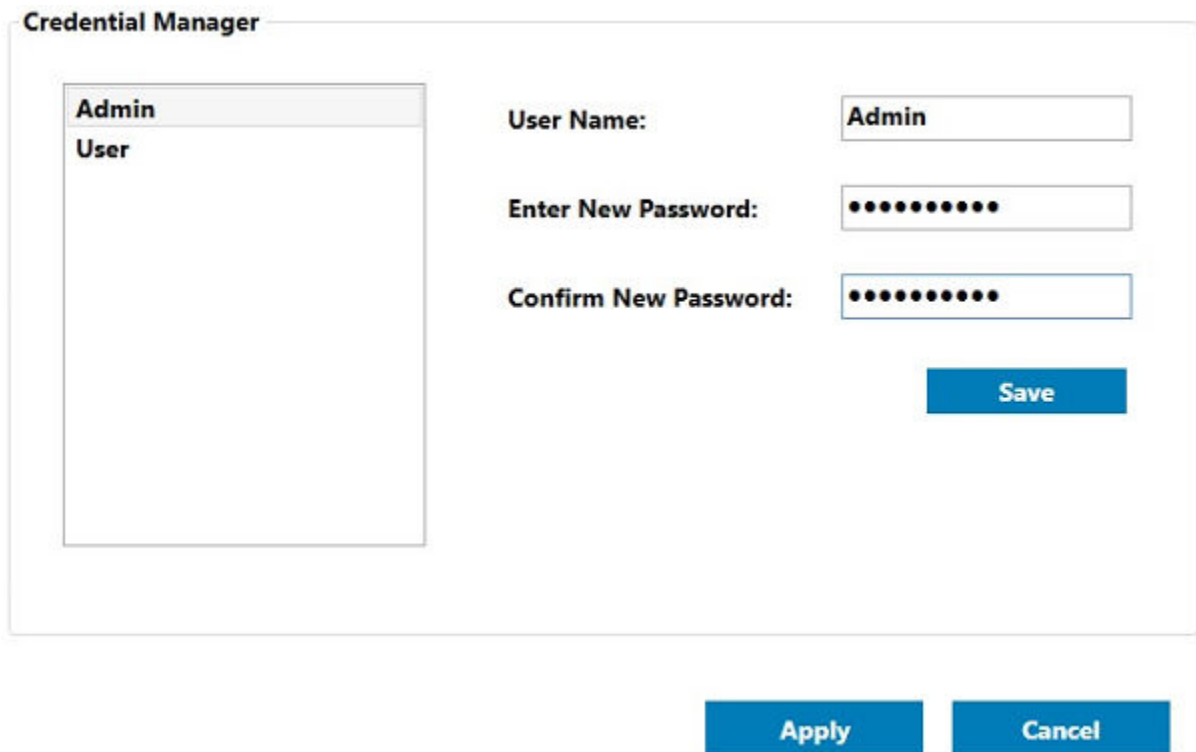


Figure 3. Credential manager

- 10 Select the user account, and type the login credentials.
- 11 Click **Save**.
- 12 Click **Apply** to save the changes.
This process takes 5–10 minutes to complete. The device turns off after the Sysprep process is complete.

NOTE: If SFC scan is enabled, the process may take 45–60 minutes to complete.

Unified Write Filter

To enable or disable the Write Filter, see *Microsoft Windows 10 IoT Enterprise Administrators Guide* at [Dell support site](#).

CAUTION: Please follow proper write filter and Windows Page File usage instructions at all times. Such instructions include making sure that the write filter is enabled during regular use and is disabled only temporarily by an administrator when required for image upgrades, applying security patches, registry changes and application installation. The write filter should be re-enabled as soon as such tasks are completed. Such instructions further include never enabling the Windows Page File feature during regular use of the thin client. Any operation of a Dell Wyse Windows Embedded Thin Client with the write filter turned off during regular use and/or with the Windows Page file enabled will prematurely wear out your Flash/SSD storage, decrease performance and decrease the lifespan of the product. Dell is not responsible for, and will not, warrant, support, repair or replace any thin client device or component that fails to operate properly due to a failure to follow these instructions.

- When you disable the Write Filter from the system tray, a caution message is displayed.

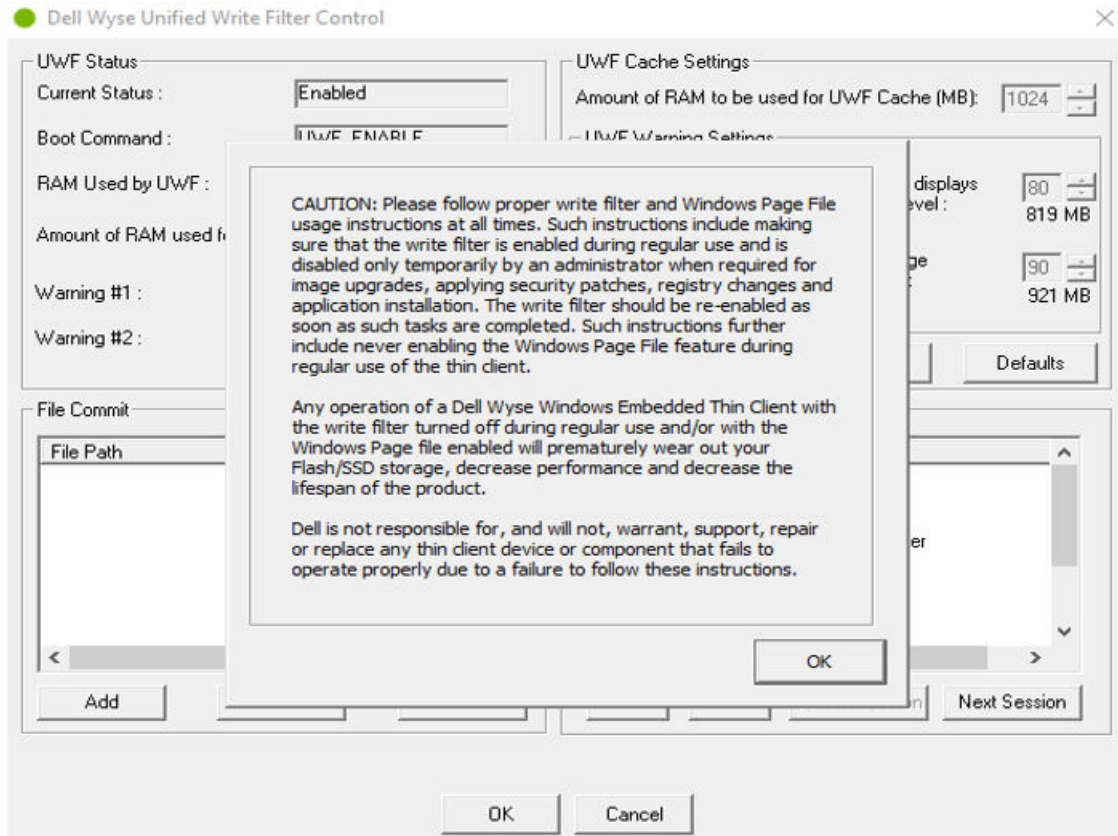


Figure 4. UWF caution message

- After the Write Filter is disabled, a caution message is displayed during every reboot to notify that the client is used in Write Filter disable state.

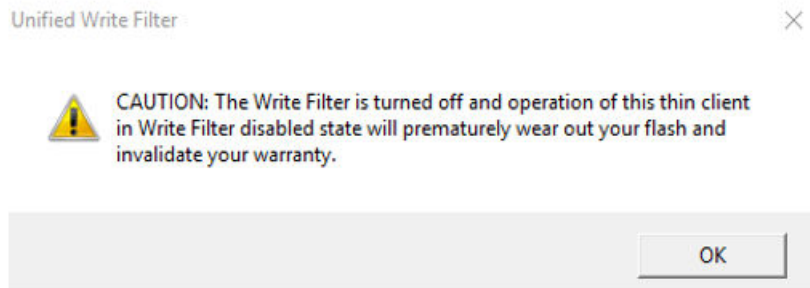


Figure 5. UWF caution pop-up

UWF file folder exclusions

- C:\Users\Admin\AppData\LocalLow
- C:\Users\User\AppData\LocalLow
- C:\Program Files\Windows Defender
- C:\Program Files (x86)\Windows Defender
- C:\Windows\WindowsUpdate.log
- C:\Windows\Temp\MpCmdRun.log
- C:\ProgramData\Microsoft\Windows Defender
- C:\program files\Wyse\WDA\Config

- C:\Users\Public\Documents\Wyse
- C:\Wyse\WCM\ConfigMgmt
- C:\Wyse\WCM
- C:\Wyse\WDA
- C:\Windows\System32\spp

UWF Registry exclusions

- HKLM\Software\Wyse\ConfigMgmt
- HKLM\SYSTEM\CurrentControlSet\Control\WNT\UWFSvc
- HKLM\SOFTWARE\Microsoft\Windows Defender
- HKLM\SOFTWARE\Microsoft\Windows\CurrentVersion\HomeGroup
- HKLM\SOFTWARE\Microsoft\Windows NT\CurrentVersion\NetworkList
- HKLM\SYSTEM\WPA

ENERGY STAR specifications

Wyse 7040 thin clients with Windows 10 IoT Enterprise Threshold 1 meets the ENERGY STAR Threshold 1 standards.

The following values are set by default in the Control Panel applet of Power options:

- Supports WOL power off states.
- Supports idle state wake.
- Screen off timer set to 10 minutes.
- Sleep timer set to 15 minutes.

Support matrix

This section provides information about the test environment, product information, BIOS, and processor.

Build details

Table 2. Build details

Platform	Wyse 7040 thin client	Wyse 7040 thin client
Operating system	Windows 10 IoT Enterprise Threshold 1	Windows 10 IoT Enterprise Threshold 1
Build number and size	7040_0A79_32GB_Standard.exe —14.8 GB (15,997,596,492 bytes)	7040_0A79_32GB_Upgrade.exe —14.8 GB (15,997,596,460 bytes)
BIOS version	1.5.6	1.5.6
RAM	4 GB\8 GB\16 GB	4 GB\8 GB\16 GB
Flash drive	128 GB SSD\256 GB SED\500 GB HDD	128 GB SSD\256 GB SED\500 GB HDD
Languages	en-US, ja-JP, fr-CA, de-DE	en-US, ja-JP, fr-CA, de-DE

NOTE: The build **7040_0A79_32GB_Upgrade.exe** is used to upgrade the image from Windows Embedded Standard 7P to Windows 10 IoT Enterprise by using Wyse Management Suite, Wyse Device Manager, and USB Imaging Tool.

Product information

Table 3. Product information

Product name	Windows 10 Enterprise 2015 LTSP
Model name	Wyse 7040 thin client
Product version	11.04
Windows Embedded version	10.0 Build—10240
Manufacturer	Dell Inc.

Tested environments

Table 4. Tested environments

Wyse Device Manager version	5.7.3
Wyse Management Suite version	1.2
USB Imaging Tool version	3.1.0
Boot Agent version	3.7.7
Language control application version	1.0.0
SCCM version	Microsoft System Center Configuration Manager 2016 version 1606 Console version: 5.0.8412.1313 Site version: 5.0.8412.1000

BIOS details

Table 5. BIOS details

BIOS version	1.5.6
File type	.exe file
Size	8.54 MB—8,956,248 bytes

Processor details

Table 6. Processor details

Name	Intel(R) Core(TM) i7-6700TE CPU at 2.40 GHz
Speed	2400 MHz

Address width	64 bits
Data width	64 bits

Fixed issues

Table 7. Fixed issues

Issue number	Description
WS-2193	Wyse Device Agent does not report IP address to the Wyse Management Suite.
WS-2194	Wyse Management Suite does not report Custom fields from Windows 10 IoT Enterprise devices.
WS-2195	C-A-D tool—Win+L Hotkey.
WS-2196	Incorrect passwords are displayed in the Registry-Auto login field.
WS-2197	Blank space is added in the unquoted service path of Wyse Device Agent (WDA).

Known issues

Table 8. Known issues

Issue number	Description	Workaround
WS-1362	When you use SCCM client to pull the image, the system fails to boot. This is a known issue on Windows 10 IoT operating system.	There is no workaround available.
WS-2141	The Windows To Go window does not open when you click the icon in the Control panel with write filter enabled.	Disable write filter.
WS-2080	Low memory issue is observed when you open multiple applications.	Install Overlay Optimizer. For installation steps, see Overlay Optimizer Release Notes at downloads.dell.com/wyse/ .
WS-2154	The error message <code>Windows could not complete the installation. To install Windows on this computer, restart the installation</code> is displayed, while imaging from Wyse Management Suite server with Logitech HD Webcam C930e and when multiple USB drives are connected to the device.	During imaging, do not connect any external devices except keyboard and mouse.
WS-1329	When you move an application to other location in the start screen, the application gets disabled.	There is no workaround available.
WS-1525	Unknown IP as subnet is observed during PAD imaging.	There is no workaround available.
WS-566	After running custom Sysprep, the time zone does not change when you switch between the MUI languages.	There is no workaround available.
WS-1257	Auto power-on option does not work during BIOS setup on Wyse 7040 thin client.	There is no workaround available.

Issue number	Description	Workaround
WS-642	Black screen is displayed on all six connected monitors when you use keyboard or mouse to wake up the thin client.	There is no workaround available.
WS-1734	Low memory issue may be observed when YouTube videos are played.	There is no workaround available.
WS-1321	The error message <code>Your computer is low on memory</code> is displayed in addition to Citrix HDX engine error message. This issue is observed due to the limitation of the Write Filter threshold being set to 512 MB in thin clients. Also, when the application crosses the threshold limit, the low memory issue is displayed as the Write Filter cannot handle that scenario. For example, playing 1080p video in Citrix session on multiple tabs simultaneously (more than three tabs)	There is no workaround available.
WS-1335	Bluetooth mouse may stop working even after the device is started from the sleep mode.	There is no workaround available.
WS-1380	Microsoft Windows Media player displays the error <code>Video Card problem</code> when you switch the screen from extended display to duplicate display.	There is no workaround available.

Device manager components and driver versions

Table 9. Device manager components and driver versions

Component name	Driver version
Speakers/headphones—Realtek audio	10.0.10240.16384
ACPI x64-based PC	10.0.10240.16384
Dell Wyse RAMDisk driver	5.0.2183.5
ST500LM000-1EJ162	10.0.10240.16384
Intel HD Graphics 530	21.20.16.4821
System firmware	10.0.10240.16384
USB input device	10.0.10240.17889
HID keyboard devices	10.0.10240.16384
Dell Wyse flash driver	1.0.7.7
HID—complaint mouse	10.0.10240.16384
Generic PnP monitor	10.0.10240.16384
Intel Ethernet Connection (2) I219-LM	12.15.22.6
Realtek PCIe GBE family controller	10.10.926.2016
Dell Open Print driver	10.0.10240.16384
Fax	10.0.10240.16384
Microsoft Print to PDF	10.0.10240.16384

Component name	Driver version
Microsoft XPS Document Writer	10.0.10240.16384
Root Print Queue	10.0.10240.16384
Intel Core i7-6700TE CPU at 2.40 GHz	10.0.10240.17889
Trusted Platform Module 1.2	10.0.10240.17673
Microsoft device association root enumerator	10.0.10240.16384
Microsoft GS Wavetable Synth	10.0.10240.16384
Intel display audio	10.22.1.100
Realtek audio	6.0.1.6122
Intel Chipset SATA RAID controller	14.8.1.1043
Microsoft Storage Spaces Controller	10.0.10240.16384
ACPI Fan	10.0.10240.17797
ACPI fixed feature button	10.0.10240.17797
ACPI power button	10.0.10240.17797
ACPI processor aggregator	10.0.10240.16384
ACPI Thermal Zone	10.0.10240.17797
Composite bus enumerator	10.0.10240.16384
High Definition audio controller	10.0.10240.17889
High precision event timer	10.0.10240.17797
Intel 100 Series/C230 Series Chipset Family LPC Controller—A146	10.1.1.9
Intel 100 Series/C230 Series Chipset Family PCI Express root port—A117	10.1.1.9
Intel 100 Series/C230 Series Chipset PMC—A121	10.1.1.9
Intel 100 Series/C230 Series Chipset SMBus—A123	10.1.1.9
Intel 100 Series/C230 Series Chipset Thermal subsystem—A131	10.1.1.9
Intel Power Engine Plug-in	10.0.10240.16384
Intel Xeon E3-1200/1500 v5/6th Gen Intel Core PCIe Controller (x16)—1901	10.1.1.9
Legacy device	10.0.10240.17797
Microsoft ACPI—complaint system	10.0.10240.17797
Microsoft System Management BIOS driver	10.0.10240.16384
Microsoft UEFI—compliant system	10.0.10240.17889
Microsoft virtual drive enumerator	10.0.10240.17738
Microsoft Windows Management interface for ACPI	10.0.10240.16384
NDIS Virtual network adapter enumerator	10.0.10240.16384
Numeric data processor	10.0.10240.17797

Component name	Driver version
PCI Express root complex	10.0.10240.16942
PCI standard host CPU bridge	10.0.10240.17797
Plug and play software device enumerator	10.0.10240.16384
Programmable interrupt controller	10.0.10240.17797
Remote desktop device redirector bus	10.0.10240.16384
System CMOS/real time clock	10.0.10240.17797
System Management device	8.2.0.454
System timer	10.0.10240.17797
UMBus root bus enumerator	10.0.10240.16384
Generic USB hub	10.0.10240.16603
Intel USB 3.0 eXtensible host controller—1.0 (Microsoft)	10.0.10240.16461
USB composite device	10.0.10240.17643
USB root hub (xHCI)	10.0.10240.16603

Operating system components

Table 10. Operating system components

Drivers/files	Version
Ethernet adapter	Realtek PCIe GBE Family Controller—version 10.10.630.2016 in Device Manager
Audio	AMD High Definition audio device—version 10.0.0.1 Device Manager . Realtek High Definition audio—version 6.0.1.8397 in Device Manager .
Wireless adapter	Intel Dual Band Wireless-AC 7260—version 18.33.12.2 in Device Manager . Intel PROSet/Wireless software—version 20.40.0 in Programs and features .
Bluetooth	Intel Wireless Bluetooth—version 19.41.0.1 in Device Manager . Intel Wireless Bluetooth—version 20.40.0 in Program and features .
TPM	Supported
Wyseramdisk.sys—Wyse RAMDisk driver	5.0.2183.5
USB 3.0	AMD USB 3.0 eXtensible host controller—1.0 (Microsoft)—version 10.0.10240.16461 in Device Manager .
Dell Wyse flash driver—Flash.sys	Version 1.0.7.7 in Device Manager
Dell KM632 Wireless keyboard CAPS Lock indicator	Version 2.1.11.1 in Program and features
Dell Open printer driver	Version 1.91.7882.0 in Program and features

Drivers/files	Version
Keyboard device driver	Version 10.0.10240.16384 in Device Manager

Application, feature, and file details

Table 11. Application, feature, and file details

Applications/features/files	Compatibility and version
RDC	10.0.10240—RDP 10.0 is supported. 10.0.10240.16384—version displayed in Dell Thin Client Application .
Citrix Receiver 4.11	14.11.0.17061—version displayed in Programs and features . 14.11.0.17061—version displayed in Dell Thin Client Application .
Citrix HDX Real Time Media Engine 2.4	2.4.0.1233—version displayed in Programs and features .
Lync VDI 2013	15.0.4569.1506
VMware Horizon Client	4.8
vWorkspace client	Not supported.
Ericom PowerTerm InterConnect for thin clients	12.0—version displayed in programs and features and Client Application .
SCCM client	5.00.8412.1307—version displayed in Configuration manager .
Windows Media Player	12.0.10240.16384—version displayed in Client Information .
Internet Explorer	11.0.10240.17889 11.00.10240.16384—version displayed in Client Information .
Adobe Flash player NPAPI	Not supported.
Network Access Protection	Not Supported.
Tight VNC	2.6.4.0—version displayed in Client Information .
Ericom Connect Client	7.6—version displayed in programs and features and Client Application .
.NET Framework	4.6
Windows Defender with latest definition	Virus and Spyware definition updates 1.271.738.0
Microsoft Management Console	Management Console 3.0 Version 10.0—build 10240
Bit locker with TPM	Supported
Windows Multi touch	Supported
Background Intelligent Transfer Service	Supported
MSXML	Supported
XML Paper Specification (XPS)	Supported
Credential roaming	Supported
WPA2	Supported

Applications/features/files	Compatibility and version
CredSSP	Supported
Dell Wyse wallpaper on All Users	Supported
DirectX	Supported
BuildMaster—Sysprep UI	Supported
Windows Time Service	Supported
DellThinClientApplication.exe	10.0.0.20
LicMgrTool.exe	1.0.0.7

Installed product details

Table 12. Installed product details

Product name	Publisher	Version
Citrix Receiver 4.11	Citrix Systems, Inc.	14.11.0.17061
Citrix HDX RealTime Media Engine 2.4	Citrix Systems, Inc.	2.4.0.1233
Ericom PowerTerm InterConnect for thin clients	Ericom Software	12.0
Ericom connect client	Ericom Software	7.6
VMware Horizon Client	VMware, Inc.	4.8.0.1562
Dell KM632 Wireless keyboard caps lock indicator	Dell Inc.	2.1.11.1
Dell Open Print driver	Dell Inc.	1.91.7882.0
Wyse Device Agent	Dell Inc.	14.2.0.51
PrintTicket translation database	ThinPrint GmbH	11.0.229.2
ThinPrint Viewture	ThinPrint GmbH	11.22.2.3
TightVNC	GlavSoft LLC.	2.6.4.0
Microsoft Visual C++ 2005 Redistributable (x64)	Microsoft Corporation	8.0.61000
Microsoft Lync VDI 2013	Microsoft Corporation	15.0.4569.1506
Microsoft Silverlight	Microsoft Corporation	5.1.50907.0
Remote Desktop Connection	Microsoft Corporation	10.0.10240.16384
Unified Write Filter Manager	Microsoft Corporation	10.0.10240.16384
Windows Media Player	Microsoft Corporation	12.0.10240.16384
Internet Explorer	Microsoft Corporation	11.00.10240.16384
Windows Journal	Microsoft Corporation	10.0.10240.17022
LicenseManagerShellExt	Microsoft Corporation	10.0.10240.16515
Windows PowerShell	Microsoft Corporation	10.0.10240.16384

Product name	Publisher	Version
Snipping tool	Microsoft Corporation	10.0.10240.16384
Touch keyboard and handwriting panel	Microsoft Corporation	10.0.10240.16384
Microsoft contacts import tool	Microsoft Corporation	10.0.10240.16384
Windows Driver Package—Intel Corporation (iaStorA) SCSIAdapter	Intel Corporation	11/17/2015—14.8.1.1043
Windows Driver Package—Intel Corporation (iaStorA) HDC	Intel Corporation	11/17/2015—14.8.1.1043
Intel Processor Graphics	Intel Corporation	21.20.16.4821
Intel Management Engine Components	Intel Corporation	11.7.0.1054
Intel Ready Mode Technology	Intel Corporation	1.1.70.529
Intel Rapid Storage Technology	Intel Corporation	14.8.1.1043
Intel Network Connections Drivers	Intel	20.4
Dell Command Configure	Dell Inc.	3.1.1.58
Dell Command Monitor	Dell Inc.	9.3.0.222
Realtek Audio COM Components	Realtek Semiconductor Corp.	1.0.2
Realtek High Definition Audio Driver	Realtek Semiconductor Corp.	6.0.1.6122
Realtek Ethernet Controller All-In-One Windows Driver	Realtek	10.10.926.2016
Vulkan Run Time Libraries 1.0.33.0	LunarG, Inc.	1.0.33.0
Microsoft Visual C++ 2008 Redistributable (x64)	Microsoft Corporation	9.0.21022
Microsoft Visual C++ 2008 Redistributable (x64)	Microsoft Corporation	9.0.30729.4148
Microsoft Visual C++ 2008 Redistributable (x86)	Microsoft Corporation	9.0.30729.4148
Microsoft Visual C++ 2008 Redistributable(x64)	Microsoft Corporation	9.0.30729.6161
Microsoft Visual C++ 2012 Redistributable (x86)	Microsoft Corporation	11.0.61030.0
Microsoft Visual C++ 2008 Redistributable (x86)	Microsoft Corporation	9.0.30729.6161
Microsoft Visual C++ 2012 Redistributable (x64)	Microsoft Corporation	11.0.61030.0
Microsoft Visual C++ 2013 Redistributable (x86)	Microsoft Corporation	12.0.21005.1
Microsoft Visual C++ 2013 Redistributable (x64)	Microsoft Corporation	12.0.21005.1
Microsoft Visual C++ 2015 Redistributable (x64)	Microsoft Corporation	14.0.24212.0

Product name	Publisher	Version
Microsoft Visual C++ 2015 Redistributable (x86)	Microsoft Corporation	14.0.24212.0

Quick Fix Engineering—QFE details

Table 13. Quick Fix Engineering

KB number	Description
KB3081424	Update for Microsoft Windows 10 IoT Enterprise
KB3081431	Security update for Microsoft Windows 10 IoT Enterprise
KB3081436	Security update for Microsoft Windows 10 IoT Enterprise
KB3081438	Update for Microsoft Windows 10 IoT Enterprise
KB3081441	Update for Microsoft Windows 10 IoT Enterprise
KB3081444	Security update for Microsoft Windows 10 IoT Enterprise
KB3081448	Update for Microsoft Windows 10 IoT Enterprise
KB3081452	Update for Microsoft Windows 10 IoT Enterprise
KB3081455	Security update for Microsoft Windows 10 IoT Enterprise
KB3093266	Update for Microsoft Windows 10 IoT Enterprise
KB3095020	Update for Microsoft Windows 10 IoT Enterprise
KB3097617	Security update for Microsoft Windows 10 IoT Enterprise
KB3105210	Security update for Microsoft Windows 10 IoT Enterprise
KB3105213	Security update for Microsoft Windows 10 IoT Enterprise
KB3105514	Update for Microsoft Windows 10 IoT Enterprise
KB3106932	Update for Microsoft Windows 10 IoT Enterprise
KB3116097	Update for Microsoft Windows 10 IoT Enterprise
KB3116869	Security update for Microsoft Windows 10 IoT Enterprise
KB3135174	Security update for Microsoft Windows 10 IoT Enterprise
KB3140745	Security update for Microsoft Windows 10 IoT Enterprise
KB3141032	Update for Microsoft Windows 10 IoT Enterprise
KB3173427	Update for Microsoft Windows 10 IoT Enterprise
KB4284860	Security update for Microsoft Windows 10 IoT Enterprise

Used and free space information

Table 14. Used and free space details

Platform	Flash size	Used space	Free space
Wyse 7040 thin client with Win10 IoT	128 GB SSD	17.0 GB	101 GB
	256 GB SED	17.9 GB	219 GB
	500 GB HDD	17.0 GB	447 GB

Important notes

- Use the build **7040_0A79_32GB_Upgrade.exe** to upgrade from Windows Embedded Standard 7P to Windows 10 IoT Enterprise through Wyse Management Suite, Wyse Device Manager, or USB Imaging Tool.
- Select **Force this version** rule to create a policy from Wyse Management Suite when you upgrade from Windows Embedded Standard 7P to Windows 10 IoT Enterprise.

The screenshot shows a configuration window titled "Add WES / ThinLinux Policy". It contains several fields for policy configuration:

- Policy name:** WES7P(7065) to WIE10 TH(0A79) Upgrade
- Group:** Default Policy Group
- OS Type:** WES
- OS Subtype Filter:** WES7P (Windows Embedded Star
- Platform Filter:** None selected
- OS Image:** 7040_0A79_32GB_Upgrade (WES7P, Local
- Rule:** Force this version (highlighted with a green box)
- Apply Policy Automatically:** Do not apply automatically

Buttons for "Cancel" and "Save" are located at the bottom right.

Figure 6. Force this version rule

- Wyse Device Agent and Boot Agent must be pushed to the device before imaging from Wyse Management Suite.
- RAMDiskSize.exe** is created to modify the RAM size to 100 MB in write filter enabled state and 512 MB in write filter disabled state. This RAM size is set for devices with 4 GB RAM and Windows 10 IoT Enterprise.

If the RAM size is greater than 4 GB, the RAM size is set to 512 MB in both write filter enabled state and disabled state.