

# BIOS and BIOS Settings Update Procedure on WES7P for Dell Latitude 3460 Wyse TC and Dell Latitude E7270 Wyse TC



## Notes, cautions, and warnings

 **NOTE:** A NOTE indicates important information that helps you make better use of your product.

 **CAUTION:** A CAUTION indicates either potential damage to hardware or loss of data and tells you how to avoid the problem.

 **WARNING:** A WARNING indicates a potential for property damage, personal injury, or death.

**Copyright © 2017 Dell Inc. or its subsidiaries. All rights reserved.** Dell, EMC, and other trademarks are trademarks of Dell Inc. or its subsidiaries. Other trademarks may be trademarks of their respective owners.

# Contents

<b>1 Introduction.....</b>	<b>4</b>
<b>2 BIOS Update using WDM Server.....</b>	<b>5</b>
Pushing the BIOS through WDM Server using .exe file.....	5
<b>3 BIOS Update using SCCM Server.....</b>	<b>9</b>
Creating a package.....	9
<b>4 Manual Update of BIOS.....</b>	<b>16</b>
Updating the BIOS Manually from OS.....	16
Updating the BIOS Manually by BIOS Boot Menu.....	16



# Introduction

This document provides the steps to update/flash the BIOS on Dell Wyse Enhanced Microsoft Windows Embedded Standard 7P for Dell Latitude 3460 Wyse thin client and Dell Latitude E7270 Wyse thin client. The BIOS can be updated using the following methods:

- BIOS update by WDM Server
- BIOS update by SCCM Server
- Manual BIOS Update

# BIOS Update using WDM Server

## Prerequisites

The following are the requirements to update the BIOS using WDM server:

- WDM Server Setup
- WDM Package for BIOS
- Target thin clients (Dell Wyse Enhanced Microsoft Windows Embedded Standard 7P for Dell Latitude 3460 Wyse Thin Client and Dell Latitude E7270 Wyse Thin Client)

Following is the method to update BIOS onto Dell Wyse Enhanced Microsoft Windows Embedded Standard 7P for Dell Latitude 3460 Wyse Thin Client and Dell Latitude E7270 Wyse Thin Client using WDM server:

- Pushing the BIOS through WDM server using .exe file

## Pushing the BIOS through WDM Server using .exe file

The following are the steps to update the BIOS through WDM server using .exe file:

- 1 Download the .exe file from the DELL Latitude Website.
- 2 Copy the .exe file, and place it in Local repository / WDM server.
- 3 Open the WDM server, and then open WDM console.
- 4 Expand the **Wyse Device Manager > Package Manager > Other Packages**.

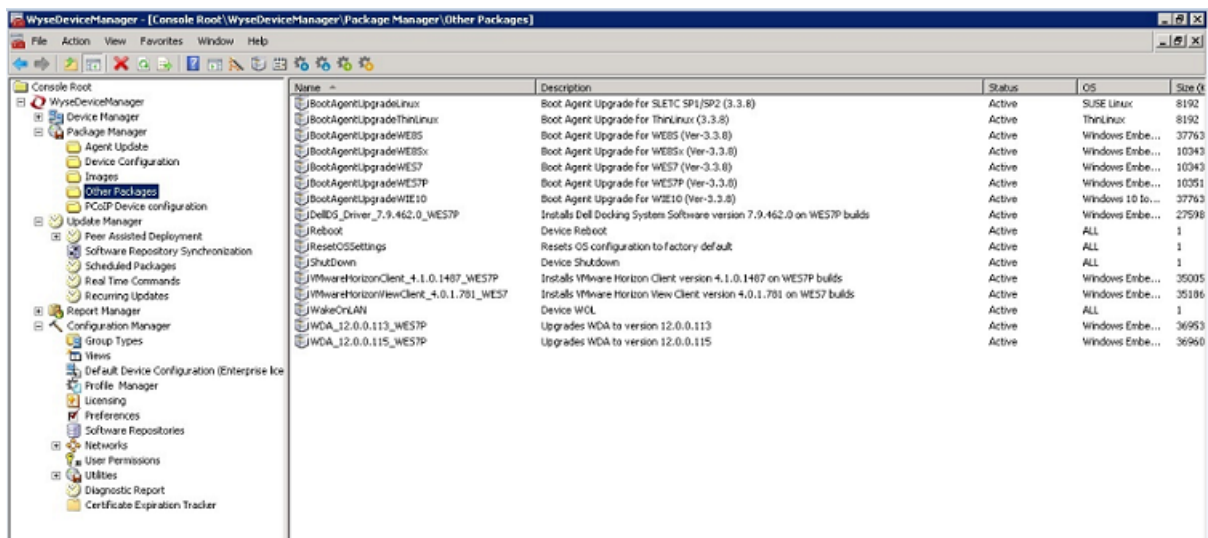


Figure 1. Other Package

- 5 Right click on **Other Packages**, and then add a new package. The **Package Wizard** page is displayed. Click **Register a package to install a File. (exe, msi, msu, or bat files only)** radio button.



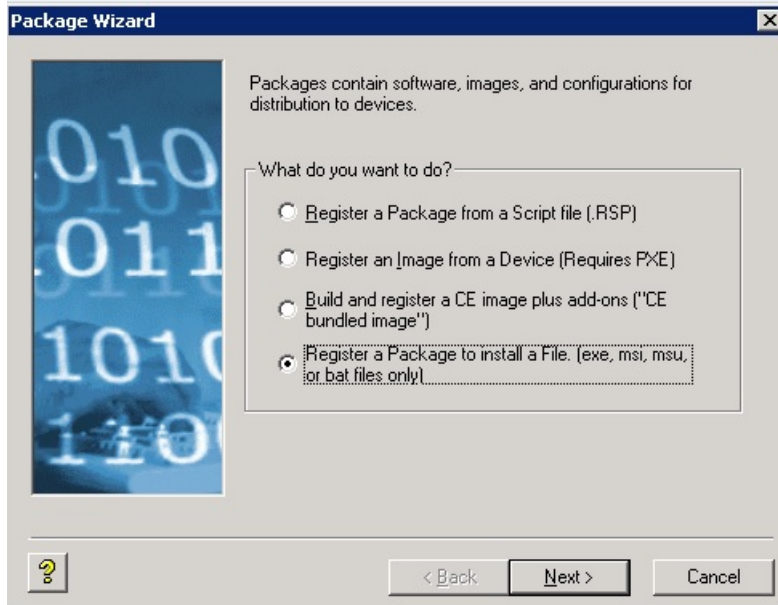


Figure 2. Package Wizard

- 6 Click **Next**, and browse the .exe file from the file location where you have downloaded the .exe file.

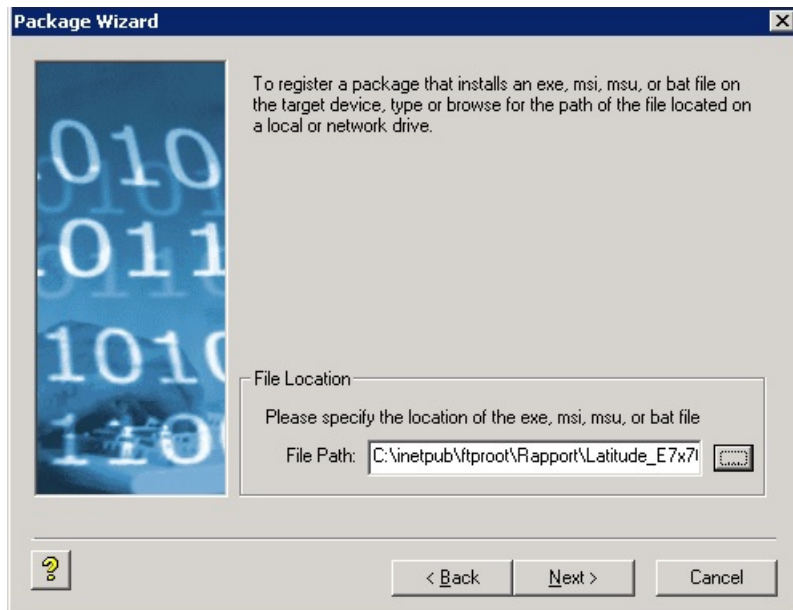


Figure 3. Package Wizard

- 7 Click **Next**, and enter the command line parameters and operating system details.

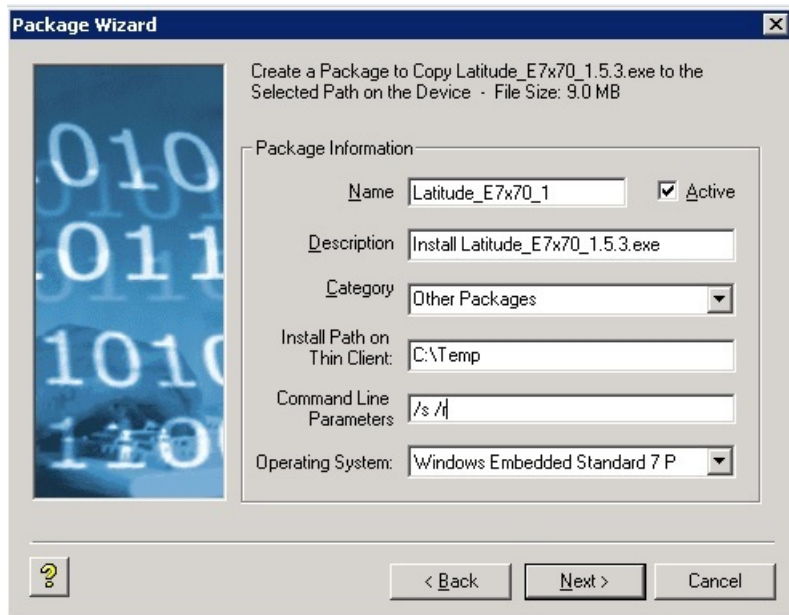


Figure 4. Package Wizard

Enter the Command Line Parameters as /s/r, and select the Operating System from the drop-down list.

- 8 Complete the wizard and the BIOS package gets registered under **Other Packages**.

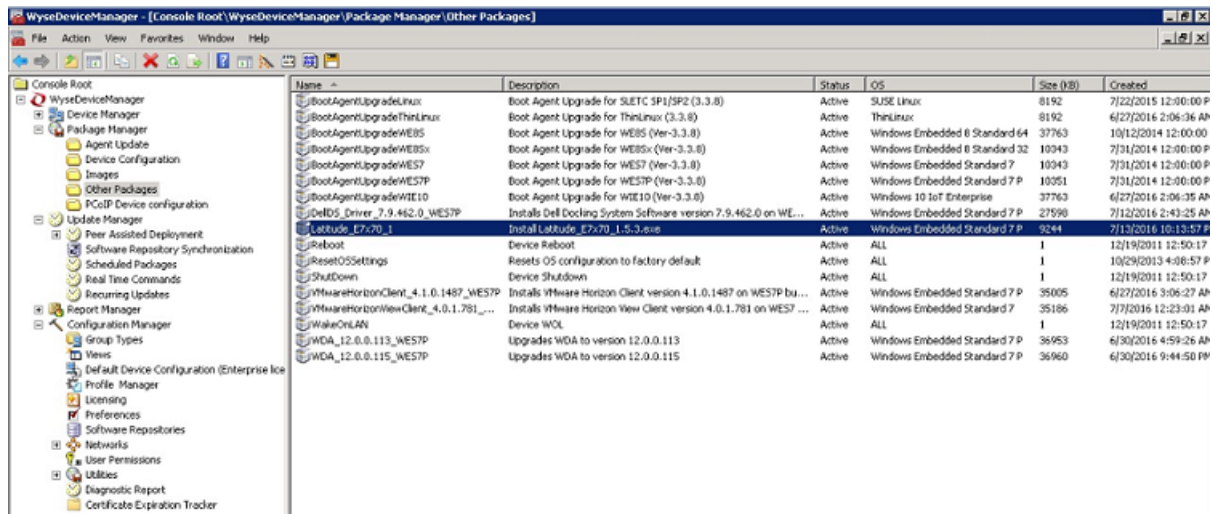


Figure 5. Package Details

- 9 Drag and drop the registered package on Device manager. **Package Distribution Wizard** page is displayed.

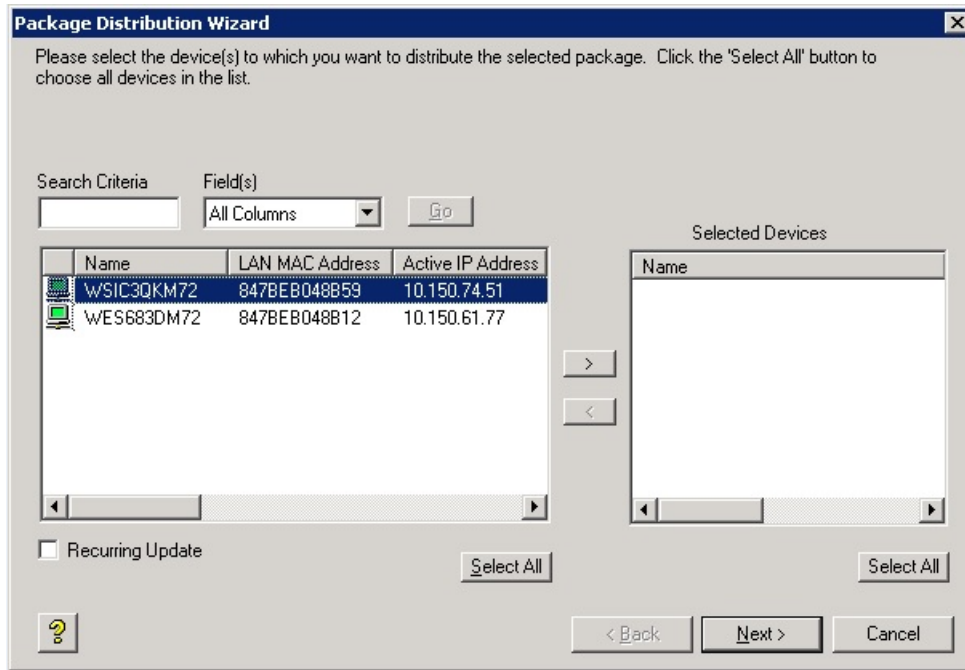


Figure 6. Package Distribution Wizard

- 10 Select the clients where you want to update the BIOS and complete the wizard. Use the **Scheduled Package** option to verify the progress of BIOS flash.

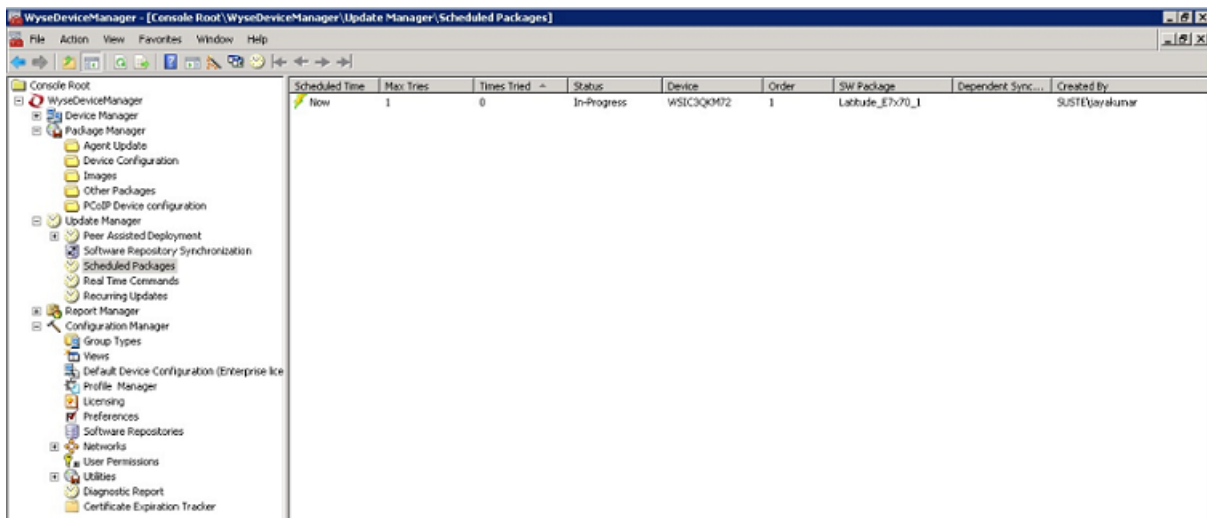


Figure 7. BIOS Flash Status

- 11 The target client reboots three times to complete the BIOS update.

# BIOS Update using SCCM Server

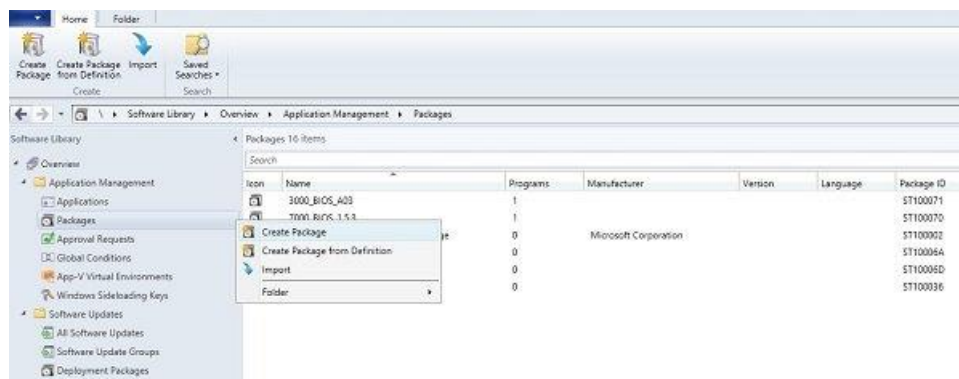
This section describes how to create and deploy a package using SCCM server.

## Creating a package

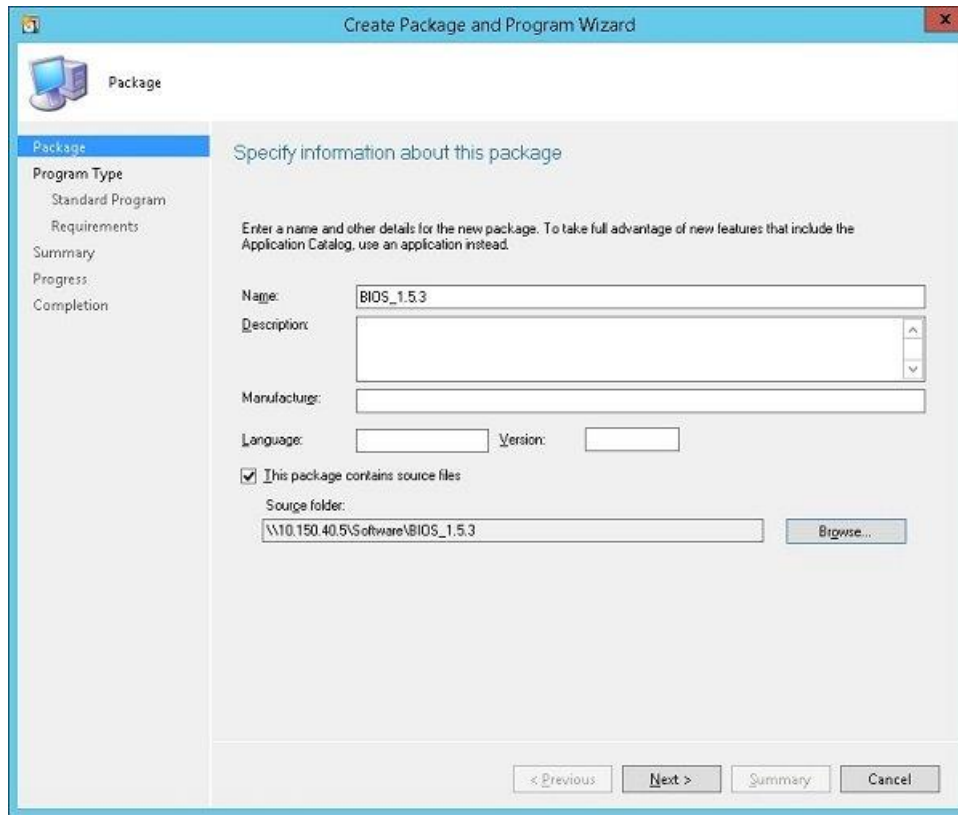
To create a package, do the following:

- 1 Create a folder on your **Configuration Manager Content Source Share** for packages.
- 2 Copy the installation package to the product folder .
- 3 Open the System Centre Configuration Manager Console and go to **Software Library > Application Management > Packages**.
- 4 Click on **Packages** and then select **Create Package**.

Figure 8. Create Package

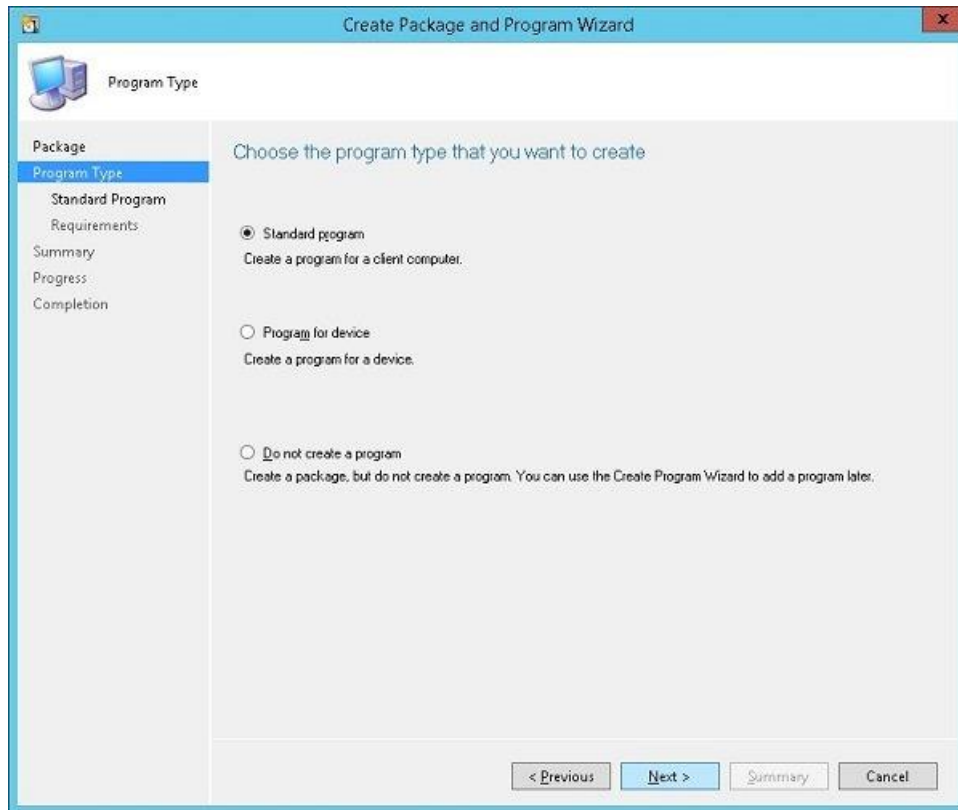


Create Package and Program Wizard page is displayed.



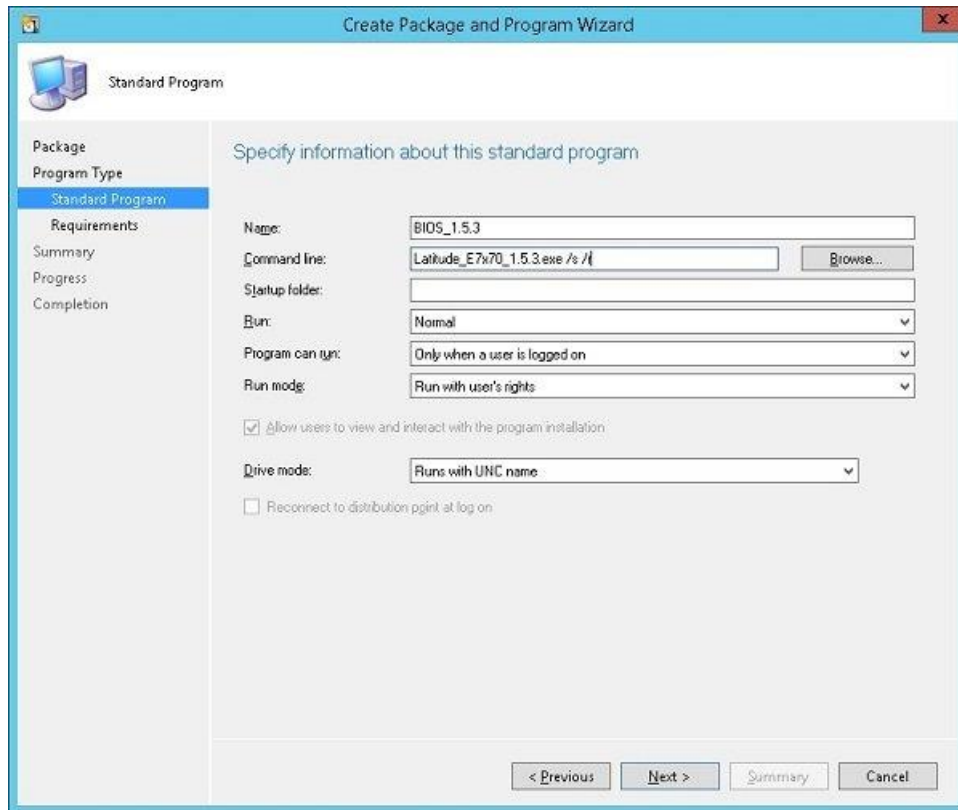
**Figure 9. Package**

- 5 Click **Next** to continue.  
The **Program Type** page is displayed.



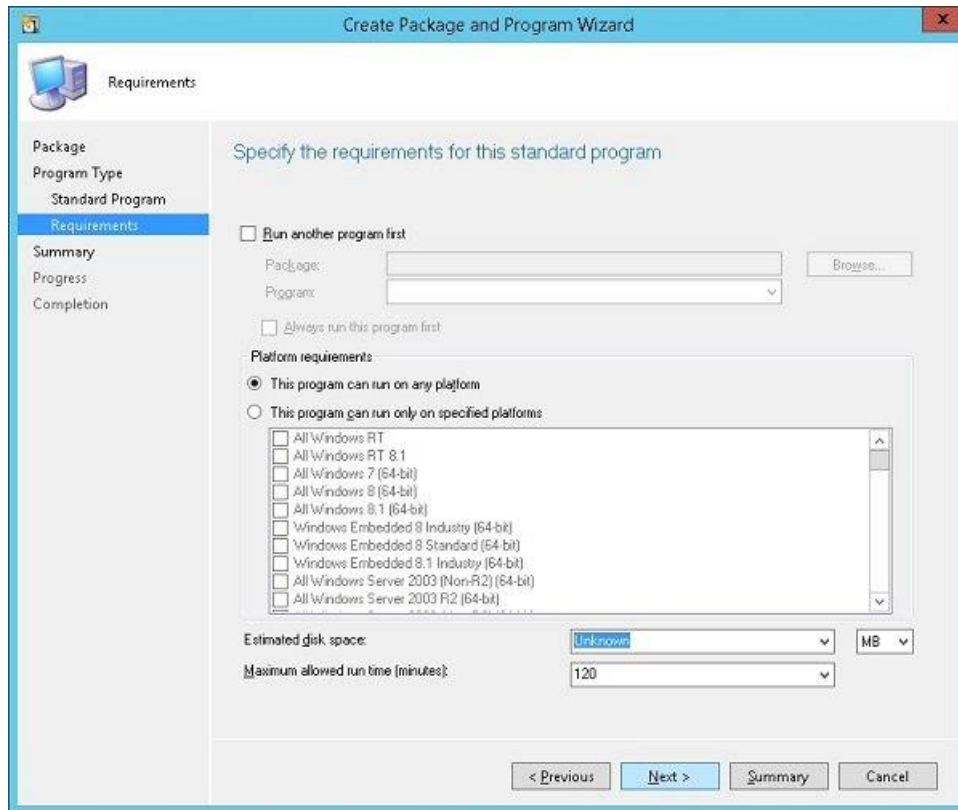
**Figure 10. Program Type**

- 6 Select the **Standard Program** option, and click **Next** to continue.  
The **Standard Program** page is displayed.



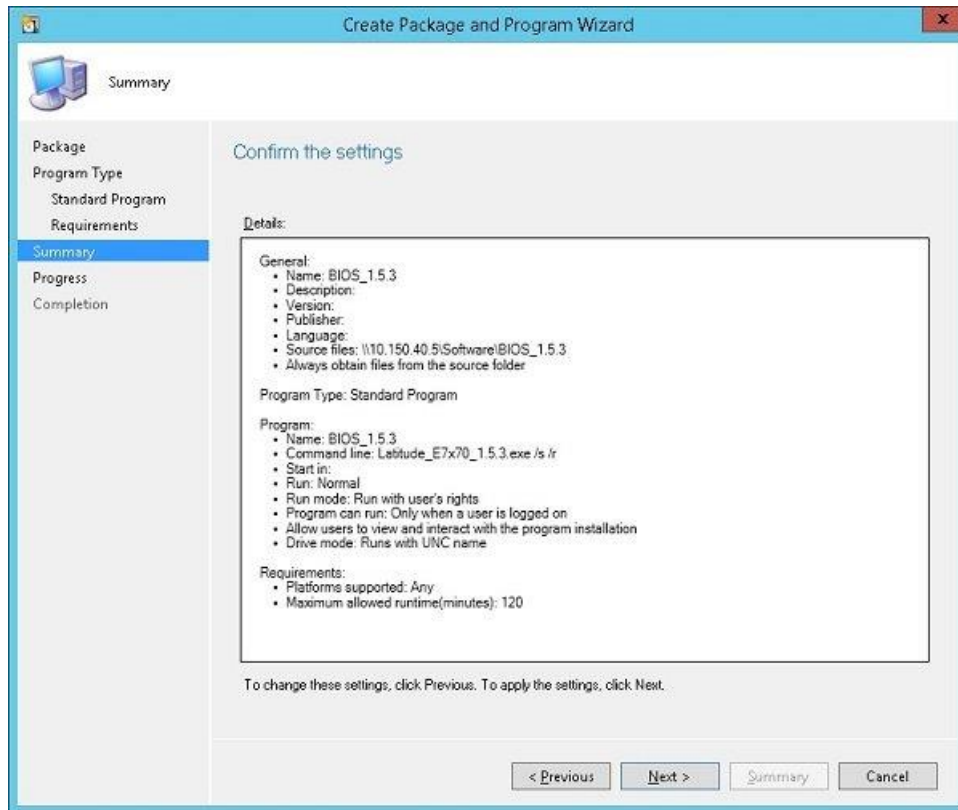
**Figure 11. Standard Program**

- 7 In the Standard Program package, enter the name of the package, and in the **Command Line** field browse the path where the BIOS .exe file is located (setup .exe /s/r). Click **Next** to continue.  
The **Requirements** page is displayed.



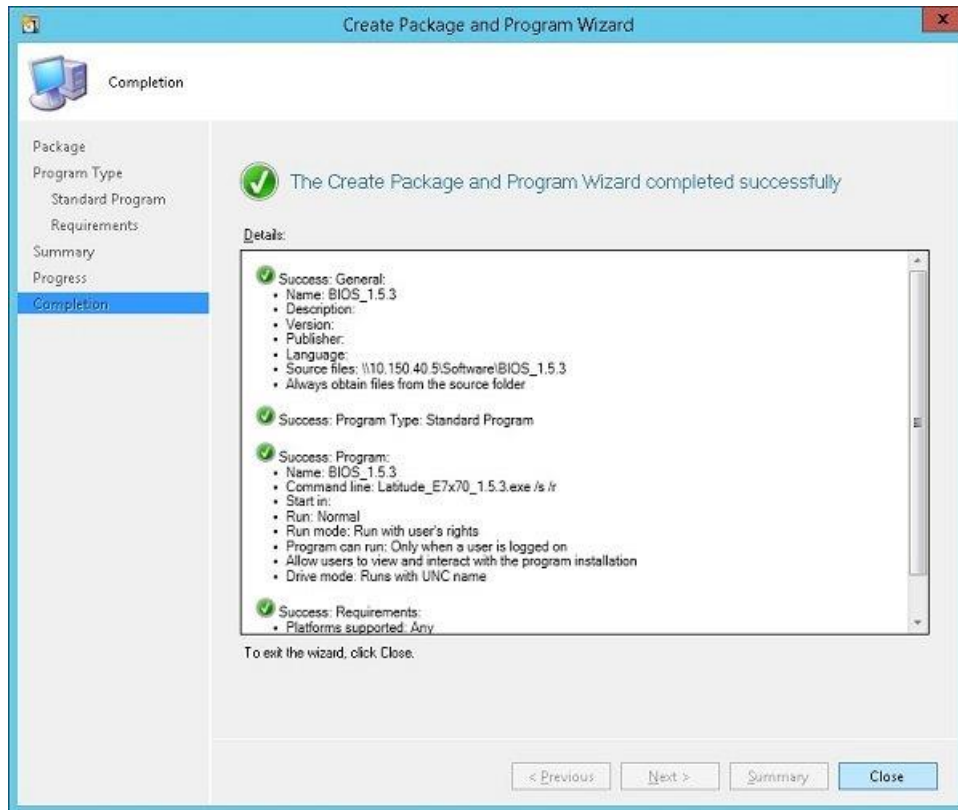
**Figure 12. Requirements**

- 8 Click **Next** to continue.  
The **Summary** page is displayed.



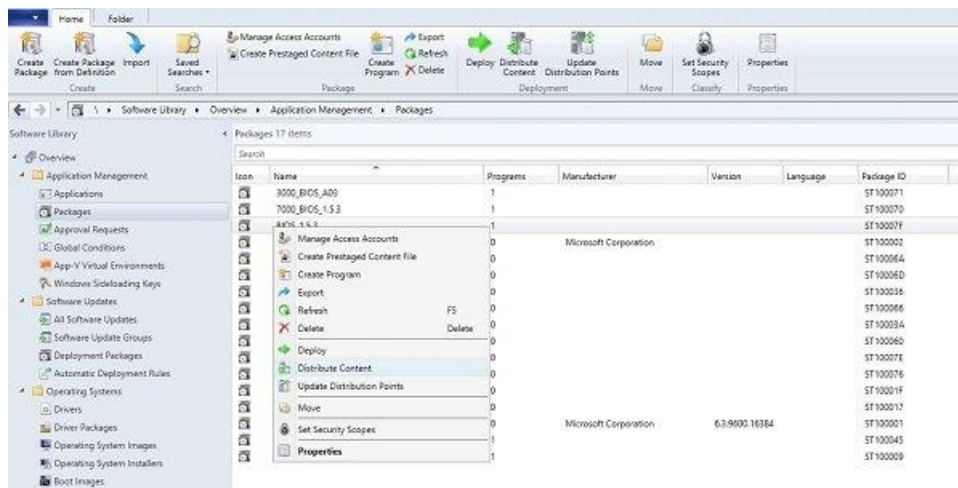
**Figure 13. Summary**

- 9 After you create the package, verify whether all the information is correct.
- 10 Click **Next** to continue.  
The **Completion** page is displayed.



**Figure 14. Completion**

- 11 Click **Close** to complete the process.
- 12 Right click on the package created, and select the **Distribute Content** option.



**Figure 15. Distribute Content**

- 13 After the package content is distributed, check if the status of the package turns green.
- 14 Join the client to Domain.
- 15 Discover the client into SCCM server.
- 16 Check if the device is discovered, and go to **Assets and compliance > devices** and check the MAC id of the client
- 17 Add the device to the device collection.

# Manual Update of BIOS

## Prerequisites

- BIOS Binary(.exe file).
- Target Thin clients (Dell Wyse Enhanced Microsoft Windows Embedded Standard 7P for Dell Latitude 3460 Wyse Thin Client and Dell Latitude E7270 Wyse Thin Client).

The BIOS can be updated manually using the following methods:

- Updating the BIOS manually by BIOS boot menu.
- Updating the BIOS manually from OS.

Topics:

- [Updating the BIOS Manually from OS](#)
- [Updating the BIOS Manually by BIOS Boot Menu](#)

## Updating the BIOS Manually from OS

To update the BIOS manually from OS, do the following:

- 1 Download the BIOS binary (.exe file) from Dell support site [www.dell.com/wyse](http://www.dell.com/wyse) to the target thin client. The .exe file can also be copied and executed from a USB key.
- 2 Execute the binary file. The user confirmation is required to update the BIOS. Click **Ok**. Then the client reboots once. The BIOS is updated.

## Updating the BIOS Manually by BIOS Boot Menu

To update the BIOS manually by BIOS boot menu, do the following:

- 1 Copy the downloaded .exe file to a USB drive (It does not need to be bootable).
- 2 Plug in the USB drive into any USB port.
- 3 Turn on the system.
- 4 On the DELL logo screen, press the **F12** key to access the one time boot menu.
- 5 In the **Other Options** section, select **BIOS Flash Update**.
- 6 Browse the USB drive to locate the downloaded .exe file.
- 7 Select the required .exe file, and then click **Ok**.
- 8 Verify the existing system BIOS information and the BIOS update information. Click **Begin Flash Update**.
- 9 After you review the warning message, click **Yes** to continue.
- 10 The system restarts, and displays a **Flash Progress** bar on the Dell logo screen as the BIOS is being updated.
- 11 The system restarts again after the flash update is complete.