

Dell EMC Server PRO Management Pack Version 5.0 for Microsoft System Center Virtual Machine Manager

User's Guide

Notes, cautions, and warnings

 **NOTE:** A NOTE indicates important information that helps you make better use of your product.

 **CAUTION:** A CAUTION indicates either potential damage to hardware or loss of data and tells you how to avoid the problem.

 **WARNING:** A WARNING indicates a potential for property damage, personal injury, or death.

Copyright © 2009 - 2017 Dell Inc. or its subsidiaries. All rights reserved. Dell, EMC, and other trademarks are trademarks of Dell Inc. or its subsidiaries. Other trademarks may be trademarks of their respective owners.

Contents

1 Introduction.....	4
What's new in this release.....	5
Overview.....	5
Related terms.....	5
What is a PRO Tip.....	5
Features and Functionalities.....	5
Understanding PRO Tip Management.....	6
Supported Operating Systems.....	7
2 Using Dell EMC Server Performance Resource Optimization Pack.....	8
Planning the Environment for PRO Tips.....	8
Monitoring using VMM.....	8
Implementing Recovery Actions.....	9
Monitoring using PRO specific alerts on Operations Manager.....	10
Alerts View.....	11
State View.....	11
Using Health Explorer to Reset Alerts.....	12
Overriding Recovery Actions.....	12
Alerts and Recovery Actions.....	13
3 Related Documentation and Resources.....	28
Security Considerations.....	28
Other Documents You May Need.....	28
4 Contacting Dell.....	29
5 Accessing documents from the Dell EMC support site.....	30

Introduction

This document is intended for system administrators who use the Dell EMC Server PRO Management Pack (Dell EMC PRO Pack) to monitor the Dell systems and take remedial action when an inefficient system is identified.

The Dell EMC PRO Pack version 5.0 integrates with the following:

- Microsoft System Center 2016 Operations Manager
- Microsoft System Center 2012 R2 Operations Manager
- Microsoft System Center 2012 SP1 Operations Manager
- Microsoft System Center 2012 Operations Manager
- Microsoft System Center 2016 Virtual Machine Manager (VMM)
- Microsoft System Center 2012 R2 Virtual Machine Manager (VMM)
- Microsoft System Center 2012 SP1 Virtual Machine Manager (VMM)
- Microsoft System Center 2012 Virtual Machine Manager (VMM)

This integration enables you to proactively manage virtual environments and ensure high availability of your Dell systems.

To implement PRO Pack, see the *Dell EMC Server PRO Management Pack Version 5.0 for Microsoft System Center Virtual Machine Manager Installation Guide*.

NOTE: All references to Operations Manager in this document are applicable to Microsoft System Center 2016 Operations Manager, Microsoft System Center 2012 R2 Operations Manager, Microsoft System Center 2012 SP1 Operations Manager, and Microsoft System Center 2012 Operations Manager unless otherwise specified.

Also, see [Features and Functionalities](#).

CAUTION: To avoid data corruption, data loss, or both; perform the procedures in this document only if you have proper knowledge and experience in using Microsoft Windows operating system, and all supported versions of Operations Manager and Virtual Machine Manager.

NOTE: The release notes contain information on the software and management station requirements, and known issues of Dell EMC Pro Pack 5.0. The release notes, `DellMPv50_PROPack_Readme.txt` is packaged in the self-extracting executable file `Dell_PROPack_v5.0_A00.exe`. However, for the latest release notes, see dell.com/OMConnectionsEnterpriseSystemsManagement and then search for *Dell EMC Server Pro Management Pack Version 5.0 for Microsoft System Center Virtual Machine Manager*.

Topics:

- [What's new in this release](#)
- [Overview](#)
- [Related terms](#)
- [What is a PRO Tip](#)
- [Features and Functionalities](#)
- [Understanding PRO Tip Management](#)
- [Supported Operating Systems](#)

What's new in this release

The release highlights of Dell EMC PRO Pack are:

- Support for OpenManage Server Administrator 8.4 to 9.0.1 versions
- Support for ten new alerts from OpenManage Server Administrator
- Support for 14th generation of PowerEdge Servers
- Support for Microsoft System Center 2016 Operations Manager
- Support for Microsoft System Center 2016 Virtual Machine Manager
- Support for Windows Server 2016

Overview

Operations Manager uses PRO-enabled Management Pack to collect and store information on the Dell hardware along with a description of their health status. Dell EMC Server PRO Pack works with Operations Manager; 2016 or 2012, and VMM; 2016 or 2012 to manage Dell physical devices and their hosted virtual machines (VMs) using this available health information. Dell EMC Server PRO Pack recommends remedial actions when monitored objects transition to an unhealthy state (for example, virtual disk failure or predictive drive error), by using the monitoring and alerting capabilities of Operations Manager and remediation capabilities of VMM.

Also see:

[Features and Functionalities](#)

[Understanding PRO Tip Management](#)

[Alerts and Recovery Actions](#)

Related terms

- A managed system is a Dell system running the OpenManage Server Administrator (OMSA), which is monitored and managed using Operations Manager and VMM. It is managed locally or remotely using supported tools.
- A management station or managing station is a Microsoft Windows based Dell system that has the Operations Manager and VMM installed to manage virtual workloads.

What is a PRO Tip

PRO (Performance and Resource Optimization) Tip is a feature that monitors the virtual infrastructure and provides alerts when there is an opportunity to optimize the usage of these resources. A PRO Tip window contains the description of the event that generated the PRO Tip and the suggested remedial action. This feature allows you to perform a load-balance of VMs between physical hosts, when specific threshold values are reached. Alternatively, you can migrate VMs when a hardware failure is detected.

The **PRO Tip** window in the VMM Administrator console enables you to view active PRO Tips for the host groups. The Operations Manager console displays the corresponding alerts as well, to ensure a consistent monitoring experience.

You can manually implement the recommended action mentioned in the PRO Tip. You can also configure the PRO tip to automatically implement the recommended action.

Features and Functionalities

Dell EMC PRO Pack:

- Performs PRO-management of PowerEdge systems running Microsoft Hyper-V platforms, by continually monitoring the health of the physical and virtual infrastructure.

- Works with Operations Manager and VMM to detect events such as loss of power supply redundancy, higher temperature than threshold values, system storage battery error, virtual disk failure, and so on. For more information on events supported by Dell EMC PRO Pack, see [Alerts and Recovery Actions](#).
- Generates PRO Tip when the monitored hardware moves to an unhealthy state.
- Performs VM live migration with no downtime. For more information, see [VM Live Migration](#).
- Overrides Dell EMC PRO Pack default recovery actions. For more information, see [Overriding Recovery Actions](#).
- Minimizes downtime by implementing the remedial action provided on PRO Tips. The two remedial actions are:
 - **Restrict:** In this mode, it is recommended that servers are made temporarily unavailable for placing new VMs till the maintenance tasks are complete.
 - **Restrict and migrate:** In this mode, it is recommended that all running VMs are migrated from an unhealthy server to a healthy server to prevent loss of service. For more information, see [Implementing Recovery Actions](#).

Understanding PRO Tip Management

This section explains a typical Dell EMC Server PRO Pack setup and the sequence of events involved in PRO tip management.

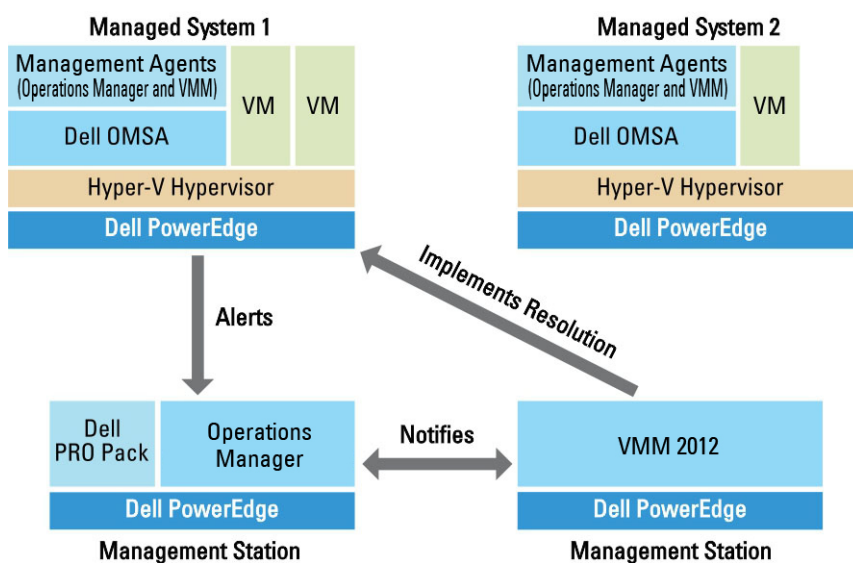


Figure 1. Interaction of Components

In the figure, a group of PowerEdge systems act as the managed systems and two PowerEdge systems act as management stations hosting the Operations Manager and VMM. OMSA generates alerts with corresponding severity when there is a transition to an unhealthy state. Dell EMC Server PRO Pack monitors the same alerts for PRO. Dell EMC Server PRO Pack maps the OMSA alerts with its remedial action.

The following table describes the sequence of events that occur in PRO Tip management.

Table 1. Sequence Number and Events

Sequence Number	Event
1	Operations Manager agents on the host are enabled to detect the warning, error, or failure alerts that are generated by OMSA.
2	Alert is sent to Operations Manager.
3	Operations Manager console displays active PRO alerts. Alerts are displayed under Active Alerts .
4	Operations Manager notifies the alert and the associated PRO Tip ID to VMM.

Sequence Number	Event
5	VMM displays a corresponding entry in the PRO Tip window with remedial action.
6	Implement the PRO Tip to enable recovery action on the managed system by placing the managed system in the Restrict mode or Restrict and Migrate mode.
7	VMM notifies Operations Manager about the successful completion of the recovery action.
8	The VMM console displays the status of the PRO Tip as Resolved after it is successfully implemented.
9	PRO Tip disappears from VMM PRO Tip window.
10	PRO Active alert disappears from Operations Manager.

For more information on the type of events and the associated remedial actions, see [Alerts and Recovery Actions](#).

Supported Operating Systems

The Dell EMC Server PRO Pack supported operating systems on the managed system and management station are as follows:

Managed system:

Supported operating systems. For more information, see Technet.microsoft.com/en-us/library/gg610649.aspx.

Management station:

Supported operating systems:

- For Operations Manager 2016, see [Technet.microsoft.com/en-us/library/dn997272\(v=sc.16\).aspx](http://Technet.microsoft.com/en-us/library/dn997272(v=sc.16).aspx)
- For Operations Manager 2012 R2 or Operations Manager 2012 SP1 or Operations Manager 2012, see Technet.microsoft.com/en-us/library/hh205990.aspx
- For Microsoft System Center 2016 Virtual Machine Manager, see [Technet.microsoft.com/en-us/library/dn997272\(v=sc.16\).aspx](http://Technet.microsoft.com/en-us/library/dn997272(v=sc.16).aspx)
- For Microsoft System Center 2012 R2 Virtual Machine Manager or Microsoft System Center 2012 SP1 Virtual Machine Manager or Microsoft System Center 2012 Virtual Machine Manager, see Technet.microsoft.com/en-us/library/gg610562.aspx

Using Dell EMC Server Performance Resource Optimization Pack

This chapter suggests steps to use PRO Pack.

Topics:

- [Planning the Environment for PRO Tips](#)
- [Monitoring using VMM](#)
- [Monitoring using PRO specific alerts on Operations Manager](#)
- [Using Health Explorer to Reset Alerts](#)
- [Overriding Recovery Actions](#)
- [Alerts and Recovery Actions](#)

Planning the Environment for PRO Tips

You can plan for enabling the PRO Monitors that are relevant for the environment. By default, all the PRO Monitors are disabled in the Dell EMC Server PRO Pack. For the list of alerts and the recovery actions, see [Alerts and Recovery Actions](#). Select the alerts that you want to enable. Using OpsMgr **Authoring Console** (or) **Authoring Pane** in OpsMgr Console, create an override for the management packs that enables the relevant PRO Monitors.

Steps for enabling the PRO Monitors are as follows:

- 1 Launch OpsMgr console.
- 2 From the navigation pane, click **Authoring**.
- 3 In the **Authoring** tab, select **Management Pack Objects > Monitors**.
- 4 Click **Change Scope** at the top of the screen.
The **Scope Management Pack Objects** screen is displayed.
- 5 Select **View all targets** and in **Look for** enter **Dell PRO**.
- 6 Select **Dell PROPack Class for Discovery** and click **OK**.
- 7 Expand **Entity Health > Availability**.
- 8 From the listed monitors, right-click the monitors you want to enable, and select **enable > Overrides > Override the Monitors > For all objects of class: Dell PROPack Class for Discovery**.
The **Override Properties** page is displayed.
- 9 Select **Enabled** and set **Override Value** to **True** and click **OK**.
To view the Dell PRO Monitored Servers Health updates, the next cycle of Dell PRO Monitored Servers discovery and monitoring must complete.

Monitoring using VMM

You can manage the health of the virtualized environment using PRO Tips displayed on the VMM console.

To see the **PRO Tip** window, click the **PRO** menu on the toolbar, as shown in the following figure:

Click the PRO Tips menu.

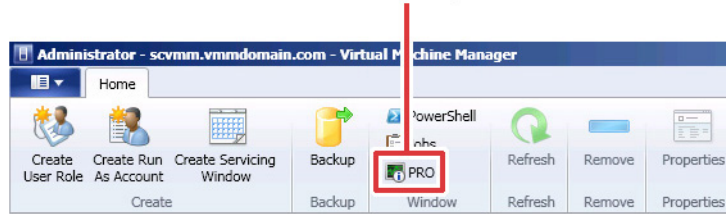


Figure 2. PRO Tips

Alternatively, if you select the **Show this window when new PRO Tips are created** option in the **PRO Tip** window, the window automatically opens on the VMM console when a PRO Tip is generated.

The **PRO Tip** window displays information such as source, tip, and state of the PRO Tip in a tabular format. The window also displays description of the problem that triggered the alert, the cause, and the suggested remedial action for recovery.

Implementing Recovery Actions

The **PRO Tip** window provides an option to either implement or dismiss the recommended action. If you select **Implement**, VMM implements one of the recovery tasks described below, based on the nature of the alert.

Placing the Host in Restrict Mode

Placing a host in **Restrict** mode prevents assignment of workload to the host until the problem is solved. In this mode, the host still receives alerts on the Operations Manager and associated PRO Tips on the VMM.

The system health conditions that can trigger the maintenance are non-critical hardware alerts on the virtualization host such as, ambient chassis temperature warning on a PowerEdge virtualization host system.

Migration of Virtual Machines

The PRO Tip management pack uses VMM algorithms to move VMs from the affected system to a healthy one. For more information on the VMM algorithms, see the Microsoft documentation at [Technet.microsoft.com/en-us/library/hh801542.aspx](https://technet.microsoft.com/en-us/library/hh801542.aspx).

The requirements for identifying a healthy system and moving the VMs are as follows:

- **Hardware requirements**—Requirements that a host must meet to run VMs. For example, sufficient memory and storage
- **Software requirements**—Requirements if met by the host allows a virtual machine to perform more optimally. For example, CPU allocation, network bandwidth, network availability, disk IO bandwidth, and free memory.

VMM assigns a star rating to hosts in a range of zero to five. If a hardware requirement is not met, for example, insufficient hard disk and memory capacity, the host automatically gets zero star and VMM does not allow you to place a VM on that host.

The system health conditions that trigger migration of VMs are hardware failure alerts on a virtualization host, such as virtual disk failure and predictive drive error. Dell EMC PRO Pack migrates VMs with the **Running** status. It does not migrate VMs with status such as **Stop**, **Pause**, and **Saved**. This is based on the star rating of the associated servers.

After you successfully implement the recovery task, the following changes takes place:

- The status of PRO Tip changes to **Resolved** and the PRO Tip entry moves out of the **PRO Tip** window.
- Corresponding alert disappears in the Operations Manager **Alert View**.

- An entry is displayed in the **Jobs** section on the VMM console. This entry displays the status of the job as **Completed**, as shown in the following figure:

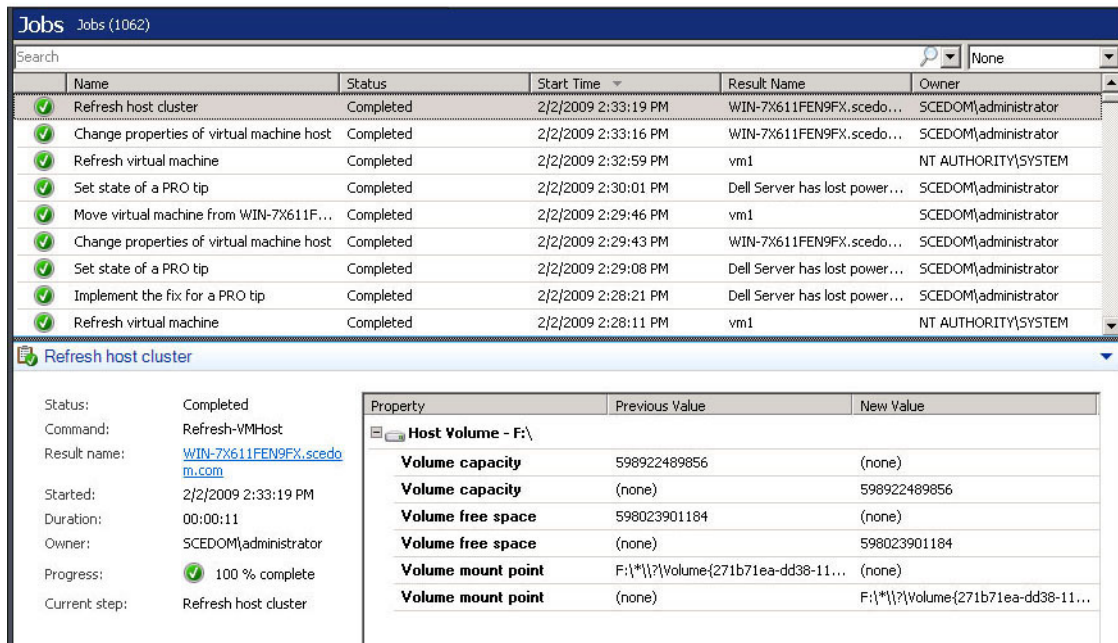


Figure 3. Completed Jobs

PRO Tip implementation of moving VMs can fail if no other healthy hosts are available in the host group or host cluster. In such a case, the **PRO Tip** window displays the **state** of the corresponding PRO Tip as **Failed**, and the reason is elaborated in the **Error** section. The status of the corresponding entry in the **Jobs** section on the VMM console is also displayed as **Failed**.

NOTE: In the PRO Tip window the failure message is updated dynamically. However, to refresh the data, you have to click outside the PRO Tip window and then click again to bring the window in focus.

If you select **Dismiss**, the PRO Tip is not executed and the following changes take place:

- The PRO Tip is removed from the VMM PRO Tip console.
- The alert in Operations Manager is removed from the **Dell Server PRO Alerts**.

For more information, see [Using Health Explorer to Reset Alerts](#).

VM Live Migration

As a connected user, during live migration, you can migrate a VM from one node of a Windows Server 2016, Windows Server 2012 R2, Windows Server 2012 SP1, Windows Server 2012, and Windows Server 2008 R2 failover cluster to another node in the same cluster without any downtime or interruption.

The difference in quick migration and live migration is that there is a downtime in quick migration whereas; there is no downtime in live migration.

NOTE: Windows Server 2008 Hyper-V supports quick migration. Windows Server 2008 R2 Hyper-V supports both quick migration and live migration.

Monitoring using PRO specific alerts on Operations Manager

You can monitor the physical devices in your network using the Operations Manager console.

The Operations Manager console provides the following views:

- Alerts View
- State View

Alerts View

Alerts View displays Dell PRO specific alerts in a tabular format with information on the severity level, source, name, resolution state, and date and time of creation.

To access the **Alert View**:

- 1 Launch the **Operations Manager** console.
- 2 Click the **Monitoring** tab.
- 3 Click **Dell Server PRO Pack > Dell Server PRO Alerts**.

The alerts are displayed on the right-side of the screen, as shown in the following figure:

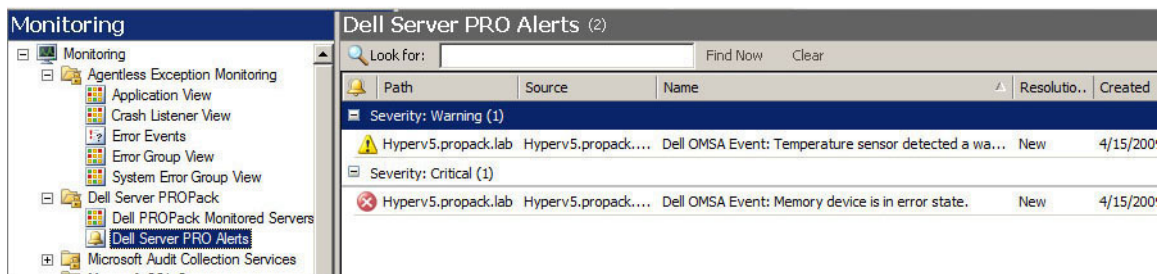


Figure 4. Dell Server PRO Alerts

State View

Displays the discovered Dell system objects in a tabular format. The State View displays objects with the name, path, and storage health of the Dell system. You can personalize the State View by defining which objects, and how the data should be displayed.

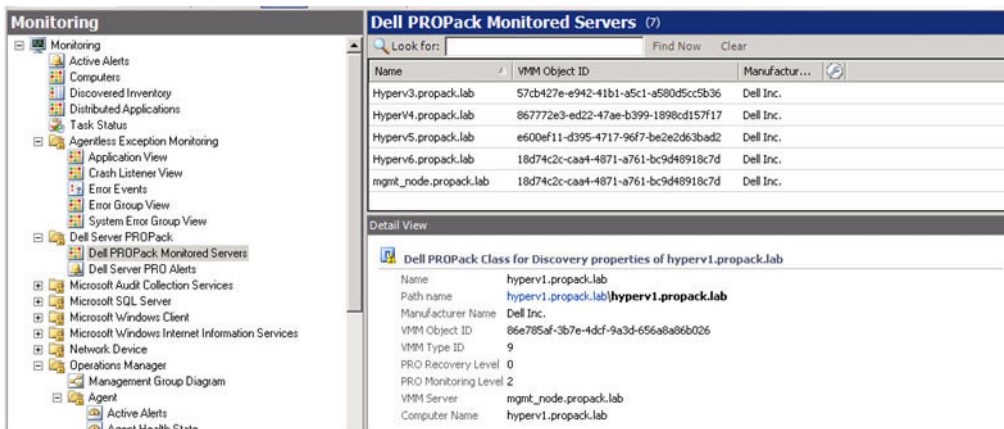


Figure 5. Dell PRO Pack Monitored Servers—State View

Using Health Explorer to Reset Alerts

Health Explorer enables you to view and take action on alerts. When you select **Dismiss** in the **PRO Tip** window, the alert is removed from it.

To manually reset the alert:

- 1 On the **Actions** menu, click **Health Explorer**.
- 2 Right-click the alert that you want to close.
- 3 Select **Reset Health**.

The alert disappears from the **PRO Tip** window.

Overriding Recovery Actions

PRO Pack 5.0 supports two recovery actions. The following flag values trigger the respective recovery action:

- **1: For migration**
- **2: For placing the server in restricted mode**

You can override the default recovery action by changing the default recovery action flag value. For example, change the recovery flag value from **2** to **1** using the overrides option provided in Operations Manager console. After overriding the default value to **1**, and implementing PRO Tip, recovery action triggers migration of VMs from the host. If you enter any other value other than **1** and **2**, PRO Tip implementation fails, and an error message is displayed.

To override the recovery action:

- 1 Click the **Authoring** tab in Operations Manager.
- 2 Browse to **Authoring > Management Pack Objects > Monitors**
- 3 Search for the Dell PRO Pack monitors.
- 4 Select the monitor which you intend to override.
- 5 Right-click and select **Overrides > Override Recovery > <monitor>**.
- 6 Select the **Override** check box.
- 7 Change the value of **Override Value**.

NOTE: When you select **Enable**, Operations Manager performs an auto-implementation for the unit monitor. Since this involves VMM migration, review and set the values accordingly.

- 8 Select the **Enforce** option.
- 9 Click **Apply**

CAUTION: Saving the settings in the default management pack, creates a dependency between PRO Pack and the management pack. When you remove or delete PRO Pack, you must delete the default management pack as well, as it contains default settings for Operations Manager. Hence, it is recommended that you save settings using a new management pack.

- 10 Click **OK**.
- 11 Generate an alert and PRO Tip.
- 12 Select **Implement PRO Tip**.

This verifies that the overridden recovery action is successful.

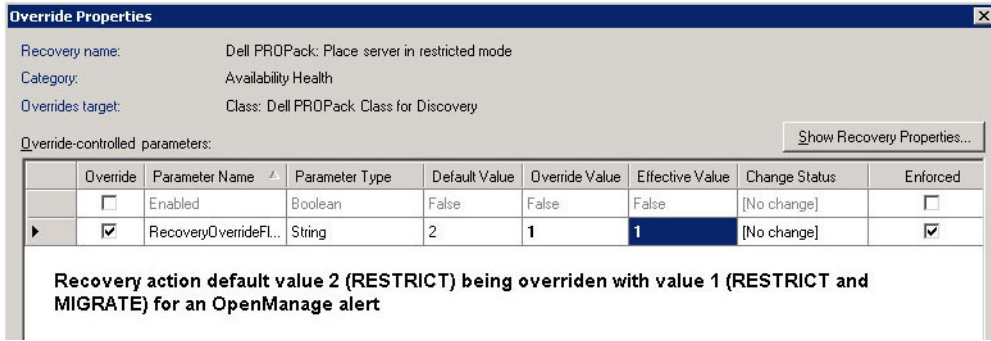


Figure 6. Override Properties

Alerts and Recovery Actions

The following table lists the alerts and the recommended remedial actions:

Table 2. Alerts and Recovery Actions

Dell Event ID	Alert Description on Operations Manager and PRO Tip in VMM	Severity	Alert Cause	Dell PRO Tip Recommended Remedial Action
1004;5004	Thermal shutdown protection has been initiated	Error	This message is generated when a system is configured for thermal shutdown due to an error event. If a temperature sensor reading exceeds the error threshold for which the system is configured, the operating system shuts down and the system powers off. This event may also be initiated on certain systems when a fan enclosure is removed from the system for an extended period of time.	Restrict and Migrate
1053;5053	Temperature sensor detected a warning value	Warning	A temperature sensor on the backplane board, system board, CPU, or drive carrier in the specified system exceeded its warning threshold value.	Restrict
1054;5054	Temperature sensor detected a failure value	Error	A temperature sensor on the backplane board, system board, CPU, or drive carrier in the	Restrict and Migrate

Dell Event ID	Alert Description on Operations Manager and PRO Tip in VMM	Severity	Alert Cause	Dell PRO Tip Recommended Remedial Action
			specified system exceeded its failure threshold value.	
1055;5055	Temperature sensor detected a non-recoverable value	Error	A temperature sensor on the backplane board, system board, or drive carrier in the specified system detected an error from which it cannot recover. The sensor location, chassis location, previous state, and temperature sensor value information is provided.	Restrict and Migrate
1104;5104	Fan sensor detected a failure value	Error	A fan sensor in the specified system detected the failure of one or more fans.	Restrict
1105;5105	Fan sensor detected a non-recoverable value	Error	A fan sensor detected an error from which it cannot recover. The sensor location, chassis location, previous state, and fan sensor value information is provided.	Restrict
1153;5153	Voltage sensor detected a warning value	Warning	A voltage sensor in the specified system exceeded its warning threshold. The sensor location, chassis location, previous state, and voltage sensor value information is provided.	Restrict
1154;5154	Voltage sensor detected a failure value	Error	A voltage sensor in the specified system exceeded its failure threshold value.	Restrict and Migrate
1155;5155	Voltage sensor detected a non-recoverable value	Error	A voltage sensor in the specified system detected an error from which it cannot recover. The sensor location, chassis location, previous state, and voltage sensor value information is provided.	Restrict and Migrate
1203;5203	Current sensor detected a warning value	Warning	A current sensor in the specified system exceeded its warning threshold value.	Restrict

Dell Event ID	Alert Description on Operations Manager and PRO Tip in VMM	Severity	Alert Cause	Dell PRO Tip Recommended Remedial Action
1204;5204	Current sensor detected a failure value	Error	A current sensor in the specified system exceeded its failure threshold value.	Restrict and Migrate
1205;5205	Current sensor detected a non-recoverable value	Error	A current sensor in the specified system detected an error from which it cannot recover. The sensor location, chassis location, previous state, and current sensor value are provided.	Restrict and Migrate
1253;5253	Chassis intrusion in progress	Warning	A chassis intrusion sensor in the specified system detected that a system cover is currently being opened and the system is operating. The sensor location, chassis location, previous state, and chassis intrusion state information is provided.	Restrict
1254;5254	Chassis intrusion detected	Critical	A chassis intrusion sensor in the specified system detected that the system cover was opened while the system was operating. The sensor location, chassis location, previous state, and chassis intrusion state information is provided.	Restrict and Migrate
1305;5305	Redundancy degraded	Warning	A redundancy sensor in the specified system detected that one of the components of the redundancy unit has failed but the unit is still redundant. The redundancy unit location, chassis location, previous redundancy state, and the number of devices required for full redundancy information is provided.	Restrict
1306;5306	Redundancy lost	Error	A redundancy sensor in the specified system detected that one of the components in the	Restrict

Dell Event ID	Alert Description on Operations Manager and PRO Tip in VMM	Severity	Alert Cause	Dell PRO Tip Recommended Remedial Action
			redundant unit has been disconnected, has failed, or is not present. The redundancy unit location, chassis location, previous redundancy state, and the number of devices required for full redundancy are provided.	
1353;5353	Power supply detected a warning	Warning	A power supply sensor reading in the specified system exceeded definable warning threshold.	Restrict
1354;5354	Power supply detected a failure	Error	A power supply has been disconnected or has failed.	Restrict
1355;5355	Power supply sensor detected a non-recoverable value	Error	A power supply sensor in the specified system detected an error from which it cannot recover. The sensor location, chassis location, previous state, power supply type, additional power supply status, and configuration error type information is provided.	Restrict
1403;5403	Memory Device Status Warning	Warning	A memory device correction rate exceeded an acceptable value.	Restrict
1404;5404	Memory Device Error	Error	A memory device correction rate exceeded an acceptable value, a memory spare bank was activated, or a multibit ECC error occurred.	Restrict and Migrate
1405;5405	Memory device status is non-recoverable	Error	Memory device status is nonrecoverable. The memory module failed because of an irrecoverable error.	Restrict and Migrate
1453;5453	Fan enclosure removed from system	Warning	A fan enclosure has been removed from the specified system. The sensor and chassis location information is provided.	Restrict

Dell Event ID	Alert Description on Operations Manager and PRO Tip in VMM	Severity	Alert Cause	Dell PRO Tip Recommended Remedial Action
1454;5454	Fan enclosure removed from system for an extended amount of time	Error	A fan enclosure has been removed from the specified system for a user-definable length of time. The sensor and chassis location information is provided.	Restrict and Migrate
1455;5455	Fan enclosure sensor detected a non-recoverable value	Error	A fan enclosure sensor in the specified system detected an error from which it cannot recover. The sensor and chassis location are provided.	Restrict and Migrate
1503;5503	AC power has been lost	Error	An AC power cord has lost its power, and lack of redundancy requires this to be classified as an error.	Restrict and Migrate
1504;5504	AC power cord has lost its power	Error	Power supply is disrupted to the AC power cord or an AC power cord is not transmitting power, and lack of redundancy requires this to be classified as an error. The sensor and chassis location information is provided.	Restrict and Migrate
1505;5505	AC power cord sensor in the system failed	Error	An AC power cord sensor in the specified system failed. The AC power cord status cannot be monitored. The sensor and chassis location information is provided.	Restrict and Migrate
1603;5603	Processor sensor detected a warning value	Warning	A processor sensor in the specified system is in a throttled state. The sensor location, chassis location, previous state and processor sensor status information is provided.	Restrict
1604;5604	Processor sensor detected a failure value	Error	A processor sensor in the specified system is disabled, has a configuration error, or experienced a thermal trip. The sensor location, chassis location, previous	Restrict and Migrate

Dell Event ID	Alert Description on Operations Manager and PRO Tip in VMM	Severity	Alert Cause	Dell PRO Tip Recommended Remedial Action
			state and processor sensor status are provided.	
1605;5605	Processor sensor detected a non-recoverable value	Error	A processor sensor in the specified system has failed. The sensor location, chassis location, previous state and processor sensor status are provided.	Restrict and Migrate
1703;5703	Battery sensor detected a warning value	Warning	A battery sensor in the specified system detected that a battery is in a predictive failure state.	Restrict
1704;5704	Battery sensor detected a failure value	Error	A battery sensor in the specified system detected that a battery has failed. The sensor location, chassis location, previous state, and battery sensor status information is provided.	Restrict
1705;5705	Battery sensor detected a non-recoverable value	Error	A battery sensor in the specified system could not retrieve a value. The sensor location, chassis location, previous state, and battery sensor status information is provided.	Restrict
2048	Device Failed Error	Critical	A storage component such as a physical disk or an enclosure has failed. The failed component may have been identified by the controller while performing a task such as a rescan or a check consistency.	Restrict and Migrate
2056	Virtual Disk Failed	Critical	One or more physical disks included in the virtual disk have failed.	Restrict and Migrate
2057	Virtual Disk Degraded Warning	Warning	This alert message occurs when a physical disk included in a redundant virtual disk fails.	Restrict
2076	Virtual Disk Check Consistency Failed	Critical	A physical disk included in the virtual disk failed or there is an error in the parity information.	Restrict and Migrate

Dell Event ID	Alert Description on Operations Manager and PRO Tip in VMM	Severity	Alert Cause	Dell PRO Tip Recommended Remedial Action
2082	Virtual Disk Rebuild Failure	Critical	A physical disk included in the virtual disk has failed or is corrupt.	Restrict
2083	Physical Disk Rebuild Failed	Critical	A physical disk included in the virtual disk has failed or is corrupt.	Restrict
2094	Predictive Failure reported	Warning	The physical disk is predicted to fail.	Restrict
2100	Temperature exceeded Maximum Warning Threshold	Warning	The physical disk enclosure is too hot. A variety of factors can cause the excessive temperature.	Restrict
2101	Temperature dropped below Minimum Warning Threshold	Warning	The physical disk enclosure is too cool.	Restrict
2102	Temperature exceeded Maximum Failure Threshold	Critical	The physical disk enclosure is too hot. A variety of factors can cause the excessive temperature.	Restrict and Migrate
2103	Temperature dropped below the Minimum Failure Threshold	Critical	The physical disk enclosure is too cool.	Restrict and Migrate
2112	Enclosure shutdown	Critical	The physical disk enclosure is either hotter or cooler than the maximum or minimum allowable temperature range.	Restrict and Migrate
2122	Redundancy degraded	Warning	One or more of the enclosure components has failed. For example, a fan or power supply may have failed.	Restrict
2123	Redundancy Lost	Warning	A virtual disk or an enclosure has lost data redundancy.	Restrict and Migrate
2125	Controller cache pinned for missing or offline VD	Warning	Controller getting disconnected from its VD, while IO is happening	Restrict
2129	BGI (Back Ground Initialization) Failed Error	Critical	BGI of a virtual disk has failed.	Restrict
2137	Communication Time-out Warning	Warning	The controller is unable to communicate with an enclosure.	Restrict and Migrate

Dell Event ID	Alert Description on Operations Manager and PRO Tip in VMM	Severity	Alert Cause	Dell PRO Tip Recommended Remedial Action
2145	Controller battery low	Warning	The controller battery charge is low.	Restrict
2169	The controller battery needs to be replaced	Critical	The controller battery cannot recharge. The battery may have been already recharged the maximum number of times. In addition, the battery charger may not be working.	Restrict and Migrate
2171	The controller battery temperature is above normal	Warning	The room temperature may be too hot. The system fan may also be degraded or failed.	Restrict
2174	The controller battery has been removed	Warning	The controller cannot communicate with the battery. The battery may be removed or the contact point may be degraded.	Restrict and Migrate
2178	The controller battery Learn cycle has timed out	Warning	The controller battery must be fully charged before the Learn cycle can begin.	Restrict
2187	Single-bit ECC error limit exceeded on the controller DIMM	Warning	The controller memory is malfunctioning.	Restrict and Migrate
2201	A global hot spare failed	Warning	The controller is not able to communicate with a disk that is assigned as a global hot spare. The disk may have failed or been removed.	Restrict
2203	A dedicated hot spare failed	Warning	The controller is not able to communicate with a disk that is assigned as a dedicated hot spare.	Restrict
2206	The only hot spare available is a SATA disk. SATA disks cannot replace SAS disks	Warning	The only physical disk available to be assigned as a hot spare is using SATA technology.	Restrict
2207	The only hot spare available is a SAS disk. SAS disks cannot replace SATA disks	Warning	The only physical disk available to be assigned as a hot spare is using SAS technology.	Restrict
2213	Recharge count maximum exceeded	Warning	A virtual disk or an enclosure has lost data.	Restrict

Dell Event ID	Alert Description on Operations Manager and PRO Tip in VMM	Severity	Alert Cause	Dell PRO Tip Recommended Remedial Action
			redundancy. In the case of a virtual disk, one or more physical disks included in the virtual disk have failed.	
2246	The controller battery is degraded	Warning	The temperature of the battery is high. This may be due to the battery being charged.	Restrict
2264	A device is missing	Warning	The controller cannot communicate with a device. The device may be removed.	Restrict
2265	A device is in an unknown state	Warning	The controller cannot communicate with a device. The state of the device cannot be determined.	Restrict and Migrate
2268	Storage Management communication Error	Critical	Storage Management has lost communication with a controller. This may occur if the controller driver or firmware is experiencing a problem.	Restrict and Migrate
2272	Patrol Read found an uncorrectable media error	Critical	The Patrol Read task has encountered an error that cannot be corrected. There may be a bad disk block that cannot be remapped.	Restrict and Migrate
2273	A block on the physical disk has been punctured by the controller	Critical	The controller encountered an unrecoverable medium error when attempting to read a block on the physical disk and marked that block as invalid.	Restrict and Migrate
2278	The controller battery charge level is below a normal threshold.	Warning	The controller battery cannot maintain sufficient charge level to function properly or the battery is discharging.	Restrict
2282	Hot spare SMART polling failed	Warning	The controller firmware attempted to do SMART polling on the hot spare but was not able to complete the SMART polling.	Restrict and Migrate

Dell Event ID	Alert Description on Operations Manager and PRO Tip in VMM	Severity	Alert Cause	Dell PRO Tip Recommended Remedial Action
2283	A redundant path is broken	Warning	The controller has two connectors that are connected to the same enclosure.	Restrict and Migrate
2289	Multi-bit ECC error on controller DIMM	Critical	An error involving multiple bits has been encountered during a read or write operation.	Restrict and Migrate
2290	Single-bit ECC error on controller DIMM	Warning	An error involving a single bit has been encountered during a read or write operation.	Restrict
2292	Communication with the enclosure has been lost	Critical	The controller has lost communication with an enclosure management module (EMM). The cables may be loose or defective.	Restrict and Migrate
2293	EMM (Enclosure Management Module) Failure	Error	The failure may be caused by a loss of power to the EMM.	Restrict and Migrate
2298	The enclosure has a bad sensor	Warning	The enclosure has a bad sensor. The enclosure sensors monitor the fan speeds, temperature probes, and so on.	Restrict
2299	Bad PHY	Critical	There is a problem with a physical connection or PHY.	Restrict
2300	Unstable Enclosure Failure	Critical	The controller is not receiving a consistent response from the enclosure.	Restrict and Migrate
2301	Enclosure Hardware Error	Critical	The enclosure or an enclosure component is in a Failed or Degraded state.	Restrict and Migrate
2302	The enclosure is not responding	Critical	The enclosure or an enclosure component is in a Failed or Degraded state.	Restrict and Migrate
2306	Bad block table is 80% full	Warning	The bad block table is the table used for remapping bad disk blocks. This table fills as bad disk blocks are remapped.	Restrict

Dell Event ID	Alert Description on Operations Manager and PRO Tip in VMM	Severity	Alert Cause	Dell PRO Tip Recommended Remedial Action
2307	Bad block table is full.	Critical	The bad block table is the table used for remapping bad disk blocks.	Restrict
2310	A virtual disk is permanently degraded	Critical	A redundant virtual disk has lost redundancy. This may occur when the virtual disk suffers the failure of more than one physical disk.	Restrict and Migrate
2312	A power supply in the enclosure has an AC failure	Warning	The power supply has an AC failure.	Restrict
2313	A power supply in the enclosure has a DC failure	Warning	The power supply has a DC failure.	Restrict
2314	The initialization sequence of SAS components failed during system startup. SAS management and monitoring is not possible.	Critical	Storage Management is unable to monitor or manage SAS devices.	Restrict and Migrate
2318	Problems with the battery or the battery charger have been detected. The battery health is poor.	Warning	The battery or the battery charger is not functioning properly.	Restrict
2319	Single-bit ECC error on controller DIMM. The DIMM is degrading.	Warning	The dual in-line memory module (DIMM) is beginning to malfunction.	Restrict and Migrate
2320	Single-bit ECC error. The DIMM is critically degraded.	Critical	The DIMM is malfunctioning. Data loss or data corruption may be imminent.	Restrict and Migrate
2321	Single-bit ECC error. The controller DIMM is nonfunctional. There will be no further reporting	Critical	The dual in-line memory module (DIMM) is malfunctioning. Data loss or data corruption is eminent.	Restrict and Migrate
2322	The DC power supply is switched off	Critical	The power supply unit is switched off. Either a user switched off the power supply unit or it is defective.	Restrict and Migrate
2324	The AC power supply cable has been removed	Critical	The power cable may be pulled out or removed. The power cable may also have	Restrict and Migrate

Dell Event ID	Alert Description on Operations Manager and PRO Tip in VMM	Severity	Alert Cause	Dell PRO Tip Recommended Remedial Action
			overheated and become warped and nonfunctional.	
2327	The NVRAM has corrupted data. The controller is reinitializing the NVRAM	Warning	The NVRAM has corrupted data. This may occur after a power surge, a battery failure, or for other reasons. The controller is reinitializing the NVRAM.	Restrict and Migrate
2328	The NVRAM has corrupt data	Warning	The NVRAM has corrupt data. The controller is unable to correct the situation.	Restrict and Migrate
2329	SAS port report	Warning	The text for this alert is generated by the controller and can vary depending on the situation.	Restrict and Migrate
2337	The controller is unable to recover cached data from the battery backup unit (BBU)	Critical	The controller was unable to recover data from the cache.	Restrict
2340	The background initialization (BGI) completed with uncorrectable errors	Critical	The background initialization task encountered errors that cannot be corrected.	Restrict and Migrate
2342	The Check Consistency found inconsistent parity data. Data redundancy may be lost	Warning	The data on a source disk and the redundant data on a target disk are inconsistent.	Restrict and Migrate
2347	The rebuild failed due to errors on the source physical disk	Error	It is not possible to rebuild data that resides on a defective disk.	Restrict and Migrate
2348	The rebuild failed due to errors on the target physical disk.	Error	It is not possible to rebuild data that resides on a defective disk.	Restrict and Migrate
2349	A bad disk block could not be reassigned during a write operation	Critical	A write operation could not complete because the disk contains bad disk blocks that could not be reassigned. Data loss may have occurred.	Restrict
2350	There was an unrecoverable disk media error during the rebuild or recovery operation	Critical	The rebuild or recovery operation encountered an unrecoverable disk media error.	Restrict

Dell Event ID	Alert Description on Operations Manager and PRO Tip in VMM	Severity	Alert Cause	Dell PRO Tip Recommended Remedial Action
2355	Enclosure firmware download failed.	Warning	The system was unable to download firmware to the enclosure. The controller may have lost communication with the enclosure. There may have been problems with the data transfer or the download media may be corrupt.	Restrict and Migrate
2356	SAS SMP communications error	Critical	The text for this alert is generated by the firmware and can vary depending on the situation. The reference to SMP in this text refers to SAS Management Protocol.	Restrict
2357	SAS expander error	Critical	There may be a problem with the enclosure. Verify the health of the enclosure and its components.	Restrict
2387	Virtual disk bad block medium error is detected	Error	Virtual disk bad blocks are due to presence of unrecoverable bad blocks on one or more member physical disks.	Restrict and Migrate
2396	The Check Consistency detected uncorrectable multiple medium errors	Critical	Medium errors in the physical drives.	Restrict
2397	The Check Consistency completed with uncorrectable errors	Critical	Medium errors in the physical drives.	Restrict and Migrate
2416	Disk medium error detected	Warning	Disk medium error detected.	Restrict
2417	There is an unrecoverable medium error detected on virtual disk	Error	Unrecoverable medium error detected on virtual disk.	Restrict and Migrate
2,4 Driver Name: b06bdrv,ebdrv b57w2k,b57nd60x, b57nd60a,l2nd	Dell OMNIC Broadcom Network Interface Link Down	Critical	The network link is down.	Restrict
13,27,29,70 Driver Name: e1express, e1qexpress, ixgbe, e1000	Dell OMNIC Intel Network Interface Link Down	Critical	Link has been disconnected.	Restrict

Dell Event ID	Alert Description on Operations Manager and PRO Tip in VMM	Severity	Alert Cause	Dell PRO Tip Recommended Remedial Action
2699	OMSS-FluidCache communications Failure	Critical	The communications connection between OMSS and the Fluid Cache service is no longer present.	Restrict and Migrate
2900	A PCIeSSD cache device is no longer functional	Critical	The PCIeSSD cache device identified in the message is no longer functional.	Restrict and Migrate
2901	A storage device is either inaccessible or is no longer functional	Critical	The message indicates that the storage device is either inaccessible or is no longer functional.	Restrict and Migrate
2911	Cached LUN Read-Write has failed	Critical	The cached LUN identified in the message has had a failure to successfully perform a read or write operation. The user application should now be seeing I/O failures when trying to read or write to the Fluid Cache device at the path identified in the message.	Restrict and Migrate
2923	Cache device missing and unresponsive	Critical	One or more cache devices are missing and the cache is unresponsive.	Restrict and Migrate
5050	A temperature sensor has failed	Critical	A temperature sensor identified in the message has failed. This condition can cause system performance issues and degradation in the monitoring capability of the system.	Restrict and Migrate
5100	A fan sensor has failed	Critical	The sensor identified in the message has failed. The sensor may be required for optimal system performance.	Restrict and Migrate
5103	A fan sensor has failed	Warning	The fan identified in the message is not functioning correctly. The fan may be installed incorrectly or may be failing.	Restrict
5150	A voltage sensor has failed	Critical	A voltage sensor identified in the message may have	Restrict and Migrate

Dell Event ID	Alert Description on Operations Manager and PRO Tip in VMM	Severity	Alert Cause	Dell PRO Tip Recommended Remedial Action
			failed. This condition can cause system performance issues and degradation in the monitoring capability of the system.	
5200	A current sensor has failed	Critical	The current sensor identified in the message has failed. This condition can cause system performance issues and degradation in the monitoring capability of the system.	Restrict and Migrate

Related Documentation and Resources

This chapter gives the details of documents and resources to help you work with the Pro Pack 5.0.

Topics:

- [Security Considerations](#)
- [Other Documents You May Need](#)

Security Considerations

Operations Console access privileges are handled internally by Operations Manager. You can setup this using the **User Roles** option under **Administration Security** feature on the Operations Manager console. The profile of the role assigned to you determines what actions you can perform and which objects you are able to manage. For more information on security considerations, see the documentation for Microsoft System Center 2016 Operations Manager, Microsoft System Center 2012 R2 Operations Manager, Microsoft System Center 2012 SP1 Operations Manager, or Microsoft System Center 2012 Operations Manager Online Help at Technet.microsoft.com.

Other Documents You May Need

In addition to this guide, you can access the following guides available at Dell.com/support/manuals.

- *The Dell OpenManage Server Administrator CIM Reference Guide* documents the Common Information Model (CIM) provider, an extension of the standard management object format (MOF) file. The CIM provider MOF documents supported classes of management objects.
- *The Dell OpenManage Server Administrator Messages Reference Guide* lists the messages that are displayed in your Server Administrator home page Alert log or on your operating system's event viewer. This guide explains the text, severity, and cause of each service alert message that Server Administrator issues.
- *The Dell OpenManage Server Administrator Command Line Interface User's Guide* documents the complete command line interface for Server Administrator, including an explanation of the command line interface (CLI) commands to view system status, access logs, create reports, configure various component parameters, and set critical thresholds.
- *The Glossary* provides information about the terms used in this document.

Contacting Dell

NOTE: If you do not have an active Internet connection, you can find contact information on your purchase invoice, packing slip, bill, or Dell product catalog.

Dell provides several online and telephone-based support and service options. Availability varies by country and product, and some services may not be available in your area. To contact Dell for sales, technical support, or customer service issues:

- 1 Go to **Dell.com/support**.
- 2 Select your support category.
- 3 Verify your country or region in the **Choose a Country/Region** drop-down list at the bottom of the page.
- 4 Select the appropriate service or support link based on your need.

Accessing documents from the Dell EMC support site

You can access the required documents using the following links:

- For Dell EMC Enterprise Systems Management documents — [Dell.com/SoftwareSecurityManuals](https://www.dell.com/support/manuals)
- For Dell EMC OpenManage documents — [Dell.com/OpenManageManuals](https://www.dell.com/support/manuals)
- For Dell EMC Remote Enterprise Systems Management documents — [Dell.com/esmanuals](https://www.dell.com/support/manuals)
- For iDRAC and Dell EMC Lifecycle Controller documents — [Dell.com/idracmanuals](https://www.dell.com/support/manuals)
- For Dell EMC OpenManage Connections Enterprise Systems Management documents — [Dell.com/OMConnectionsEnterpriseSystemsManagement](https://www.dell.com/support/manuals)
- For Dell EMC Serviceability Tools documents — [Dell.com/ServiceabilityTools](https://www.dell.com/support/manuals)
- For Client Command Suite Systems Management documents — [Dell.com/DellClientCommandSuiteManuals](https://www.dell.com/support/manuals)
- a Go to [Dell.com/Support/Home](https://www.dell.com/support/home).
- b Click **Choose from all products**.
- c From **All products** section, click **Software & Security**, and then click the required link from the following:
 - **Enterprise Systems Management**
 - **Remote Enterprise Systems Management**
 - **Serviceability Tools**
 - **Dell Client Command Suite**
 - **Connections Client Systems Management**
- d To view a document, click the required product version.
- Using search engines:
 - Type the name and version of the document in the search box.