


OptiPlex XE3 Small Form Factor

Setup and Specifications

Contents

Chapter 1: Set up your computer	4
Chapter 2: Chassis	7
Front view.....	7
Back view.....	8
Chapter 3: System specifications	9
Physical system dimensions.....	9
Chipset.....	10
Processor.....	10
Operating system.....	11
Memory.....	11
Ports and connectors.....	11
Communications.....	12
Video.....	12
Audio.....	13
Storage.....	14
Power supply.....	14
Security.....	14
Environmental.....	14
Chapter 4: Software	16
Downloading drivers.....	16
Downloading the chipset driver.....	16
Intel chipset drivers.....	16
Downloading graphic drivers.....	17
Intel HD Graphics drivers.....	17
Intel Wi-Fi and Bluetooth drivers.....	18
Downloading the Wi-Fi driver.....	18
Realtek HD audio drivers.....	18
Downloading the audio driver.....	19
Chapter 5: Getting help and contacting Dell	20
Chapter 6: Revision history	21

Notes, cautions, and warnings

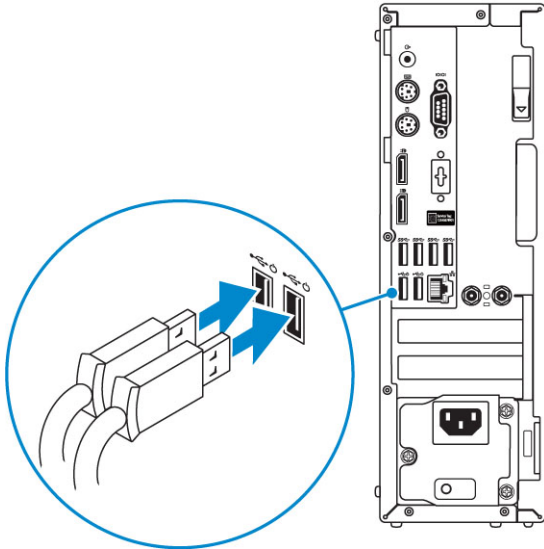
 **NOTE:** A NOTE indicates important information that helps you make better use of your product.

 **CAUTION:** A CAUTION indicates either potential damage to hardware or loss of data and tells you how to avoid the problem.

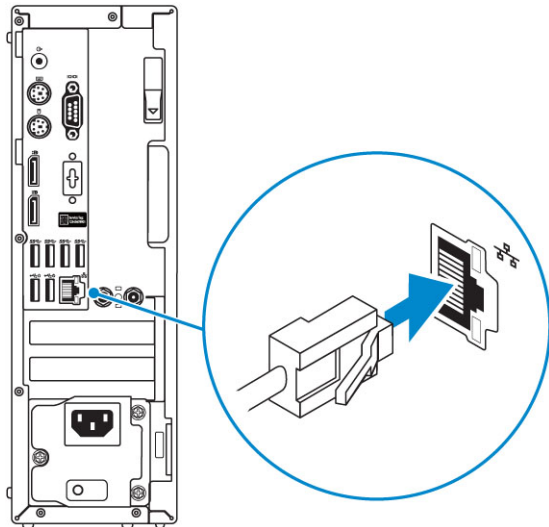
 **WARNING:** A WARNING indicates a potential for property damage, personal injury, or death.

Set up your computer

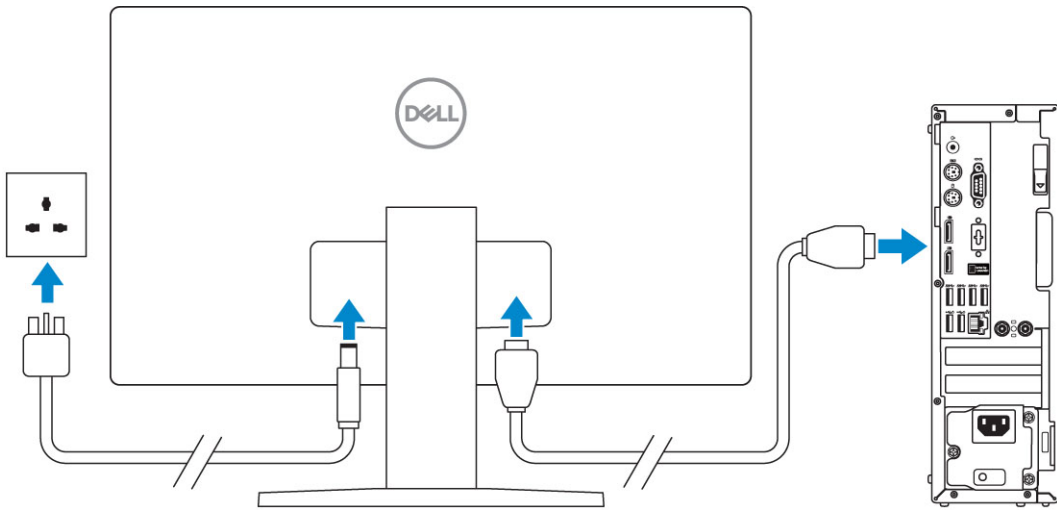
1. Connect the keyboard and mouse.



2. Connect to your network using a cable, or connect to a wireless network.

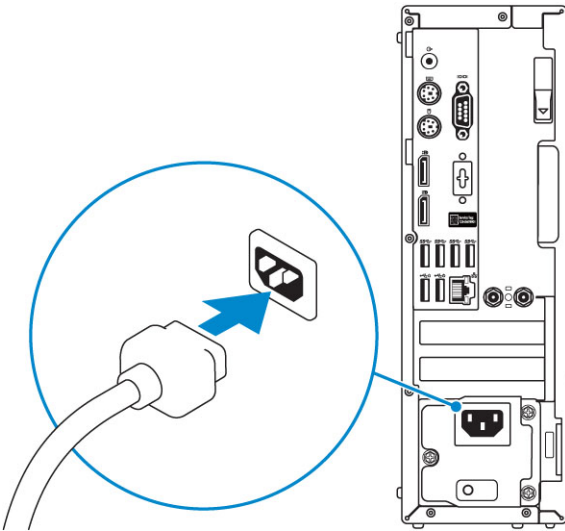


3. Connect the display.

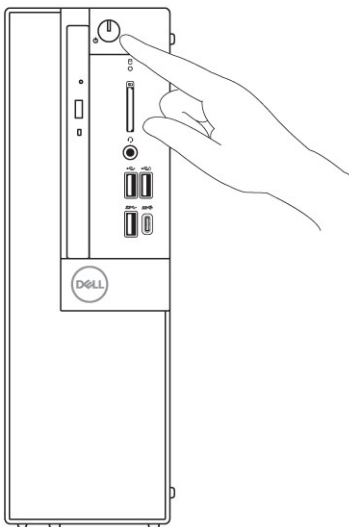


i **NOTE:** If you ordered your computer with a discrete graphics card, the HDMI and the display ports on the back panel of your computer are covered. Connect the display to the discrete graphics card.

4. Connect the power cable.



5. Press the power button.

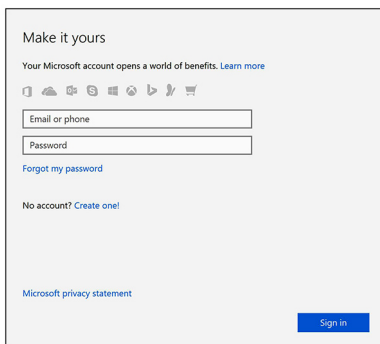


6. Follow the instructions on the screen to finish Windows setup:

- a. Connect to a network.



b. Sign-in to your Microsoft account or create a new account.



7. Locate Dell apps.

Table 1. Locate Dell apps

	<p>Register your computer</p>
	<p>Dell Help & Support</p>
	<p>SupportAssist — Check and update your computer</p>

Chassis

This chapter illustrates the multiple chassis views along with the ports and connectors and also explains the FN hot key combinations.

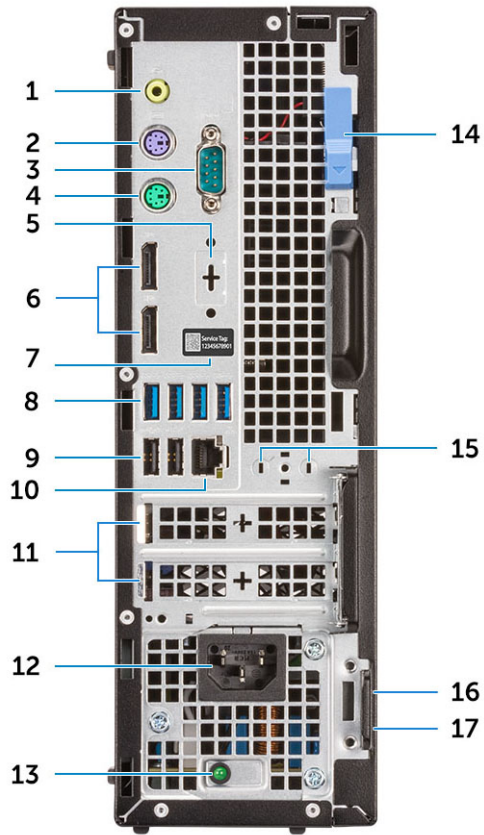
Topics:

- [Front view](#)
- [Back view](#)

Front view

1. Optical drive (optional)
2. Power button and power light
3. Hard-drive activity light
4. Memory card reader (optional)
5. Headset/Universal audio jack port
6. USB 2.0 port with PowerShare (supports battery charge capability)
7. USB 2.0 port
8. USB 3.1 Gen 2 Type-C port with PowerShare
9. USB 3.1 Gen 1 port

Back view



- 1. Line-out port
- 2. PS/2 keyboard port
- 3. Serial port
- 4. PS/2 mouse port
- 5. DisplayPort/HDMI 2.0b/VGA/USB Type-C Alt-Mode (optional)
- 6. DisplayPorts
- 7. Service tag
- 8. USB 3.1 Gen 1 ports
- 9. USB 2.0 ports (supports SmartPower On)
- 10. Network port
- 11. Expansion card slots
- 12. Power connector port
- 13. Power supply diagnostic light
- 14. Release latch
- 15. Antenna SMA connectors (optional)
- 16. Kensington security cable slot
- 17. Padlock ring

System specifications

NOTE: Offerings may vary by region. The following specifications are only those required by law to ship with your computer. For more information about the configuration of your computer, go to **Help and Support** in your Windows operating system and select the option to view information about your computer.

Topics:

- [Physical system dimensions](#)
- [Chipset](#)
- [Processor](#)
- [Operating system](#)
- [Memory](#)
- [Ports and connectors](#)
- [Communications](#)
- [Video](#)
- [Audio](#)
- [Storage](#)
- [Power supply](#)
- [Security](#)
- [Environmental](#)

Physical system dimensions

Table 2. Physical system dimensions

Chassis volume (liters)	7.8
Chassis weight (pounds / kilograms)	11.57/5.26

Table 3. Chassis dimensions

Height (inches / centimeters)	11.42/29
Width (inches / centimeters)	3.65/9.26
Depth (inches / centimeters)	11.50/29.2
Shipping weight (pounds / kilograms – includes packaging materials)	15.09/6.86

Table 4. Packaging parameters

Height (inches / centimeters)	10.38/26.4
Width (inches / centimeters)	19.2/48.7
Depth (inches / centimeters)	15.5/39.4

Chipset

Table 5. Chipset specifications

Type	Intel Q370
Non-volatile memory on chipset	Yes
BIOS configuration SPI (Serial Peripheral Interface)	256Mbit (32MB) located at SPI_FLASH on chipset
Trusted Platform Module (Discrete TPM Enabled)	24KB located at TPM 2.0 on chipset
Firmware TPM (Discrete TPM Disabled)	Available in select countries
NIC EEPROM	LOM configuration contained within LOM e-fuse – no dedicated LOM EEPROM

Processor

Global Standard Products (GSP) are a subset of Dell's relationship products that are managed for availability and synchronized transitions on a worldwide basis. They ensure the same platform is available for purchase globally. This allows customers to reduce the number of configurations managed on a worldwide basis, thereby reducing their costs. They also enable companies to implement global IT standards by locking in specific product configurations worldwide. The following GSP processors identified below will be made available to Dell customers.

NOTE: Processor numbers are not a measure of performance. Processor availability is subject to change and may vary by region/country.

Table 6. Processor specifications

Type	UMA Graphics
Intel Core i3-8100 (4 Cores/6MB/4T/3.6GHz/65W)	Intel UHD 630 Graphics integrated in the CPU
Intel Core i3-8300 (4 Cores/8MB/4T/3.7GHz/65W)	Intel UHD 630 Graphics integrated in the CPU
Intel Core i5-8400 (6 Cores/9MB/6T/up to 4.0GHz/65W)	Intel UHD 630 Graphics integrated in the CPU
Intel Core i5-8500 (6 Cores/9MB/6T/up to 4.1GHz/65W)	Intel UHD 630 Graphics integrated in the CPU
Intel Core i5-8600 (6 Cores/9MB/6T/up to 4.3GHz/65W)	Intel UHD 630 Graphics integrated in the CPU
Intel Core i7-8700 (6 Cores/12MB/12T/up to 4.6GHz/65W)	Intel UHD 630 Graphics integrated in the CPU
Intel Celeron-G4900 (2 Cores/2MB/up to 3.1GHz/54W)	Intel UHD 610 Graphics integrated in the CPU
Intel Celeron-G4920 (2 Cores/2MB/up to 3.2GHz/54W)	Intel UHD 610 Graphics integrated in the CPU
Intel Pentium Gold-G5400 (2 Cores/4MB/up to 3.7GHz/54W)	Intel UHD 610 Graphics integrated in the CPU
Intel Pentium Gold-G5500 (2 Cores/4MB/up to 3.8GHz/54W)	Intel UHD 610 Graphics integrated in the CPU
Intel Pentium Gold-G5600 (2 Cores/4MB/up to 3.9GHz/54W)	Intel UHD 610 Graphics integrated in the CPU

Operating system

Your OptiPlex XE3 supports the following operating systems:

- Windows 11 Home, 64-bit
- Windows 11 Home National Academic, 64-bit
- Windows 11 Pro, 64-bit
- Windows 11 Pro National Academic, 64-bit
- Windows 10 Home, 64-bit
- Windows 10 Home National Academic, 64-bit
- Windows 10 Pro, 64-bit
- Windows 10 Pro National Academic, 64-bit
- Ubuntu 16.04 LTS, 64-bit
- Neoklylin 6.0 (China only)

Memory

Table 7. Memory specifications

Minimum memory configuration	4 GB
Maximum memory configuration	64 GB
Number of slots	4 DIMM slots
Maximum memory supported per slot	32 GB
Memory options	<ul style="list-style-type: none"> • 4 GB - 1 x 4 GB • 8 GB - 1 x 8 GB • 8 GB - 2 x 4 GB • 16 GB - 2 x 8 GB • 16 GB - 1 x 16 GB • 32 GB - 2 x 16 GB • 64 GB - 2 x 32 GB
Type	DDR4 DRAM Non-ECC memory
Speed	2666 MHz (performs at 2400 MHz on i3, Pentium, Celeron processors)

Ports and connectors

Table 8. Ports and connectors

Memory card reader	SD 4.0 memory card reader—optional
USB	<ul style="list-style-type: none"> • USB 2.0 ports supports Smart Power On (Rear) • Four USB 3.1 Gen 1 ports (Rear) • One USB 2.0 port (Front) • USB 2.0 port with PowerShare (Front) • USB 3.1 Gen 1 port (Front) • USB 3.1 Gen 2 port with PowerShare (Front)
Security	Kensington lock slot

Table 8. Ports and connectors (continued)

Audio	<ul style="list-style-type: none"> • Universal audio jack • One line-out port
Video	<ul style="list-style-type: none"> • Two DisplayPorts • HDMI 2.0, DP, VGA, USB Type C (with DP Alt Mode)—optional
Network adapter	One RJ-45 (10/100/1000) connector
Serial port	One serial port—optional

Communications

Table 9. Communications

Network adapter	<p>Intel i219-LM Gigabit1 Ethernet LAN 10/100/1000 (Remote Wake Up, PXE and support)</p> <p>Intel 10/100/1000 PCIe Gigabit Network Card (optional)</p>
Wireless	<ul style="list-style-type: none"> • Qualcomm QCA61x4A Dual-band 2x2 802.11ac Wireless with MU-MIMO + Bluetooth 4.2 • Intel Wireless-AC 9560, Dual-band 2x2 802.11ac Wi-Fi with MU-MIMO + Bluetooth 5 • Internal Wireless Antennas • External wireless connectors and antenna • Support for 802.11n and 802.11ac wireless NIC

Video

Table 10. Video

Controller	Type	CPU Dependency	Graphics memory type	Capacity	External display support	Maximum resolution
Intel HD 630 Graphics	UMA	<p>8th Generation Intel Core Processors</p> <ul style="list-style-type: none"> • Intel Core i3-8100 • Intel Core i3-8300 • Intel Core i5-8400 • Intel Core i5-8500 • Intel Core i5-8600 • Intel Core i7-8700 	Integrated on CPU	Shared system memory	<p>DisplayPort 1.2</p> <p>Multiple Video option (VGA, DP1.2, HDMI 2.0 and USB Type-C Alt-mode)</p>	<p>VGA: 2048x1536@60 Hz</p> <p>DisplayPort: 4096x2304@60 Hz</p> <p>HDMI : 1920x1080@60 Hz</p>
gfx controller	UMA	<p>8th Generation Intel Core Processors</p> <ul style="list-style-type: none"> • Intel Celeron-G4900 • Intel Celeron-G4920 • Intel Pentium Gold-G5400 • Intel Pentium Gold-G5500 • Intel Pentium Gold-G5600 	Integrated on CPU	Shared system memory	<p>DisplayPort 1.2</p> <p>Multiple Video option (VGA, DP1.2, HDMI 2.0 and USB Type-C Alt-mode)</p>	<p>VGA: 2048x1536@60 Hz</p> <p>DisplayPort: 4096x2304@60 Hz</p> <p>HDMI : 1920x1080@60 Hz</p>

Table 10. Video (continued)

Controller	Type	CPU Dependency	Graphics memory type	Capacity	External display support	Maximum resolution
AMD Radeon R5 430	Discrete	N/A	GDDR5	2GB	DisplayPort 1.2 Multiple Video option (VGA, DP1.2, HDMI 2.0 and USB Type-C Alt-mode)	VGA: 2048x1536@60 Hz DisplayPort: 4096x2304@60 Hz HDMI : 1920x1080@60 Hz
NVIDIA GeForce GT 730	Discrete	N/A	GDDR5	2GB	DisplayPort 1.2 Multiple Video option (VGA, DP1.2, HDMI 2.0 and USB Type-C Alt-mode)	VGA: 2048x1536@60 Hz DisplayPort: 4096x2304@60 Hz HDMI : 1920x1080@60 Hz
AMD Radeon RX 550	Discrete	N/A	GDDR5	4GB	DisplayPort 1.2 Multiple Video option (VGA, DP1.2, HDMI 2.0 and USB Type-C Alt-mode)	VGA: 2048x1536@60 Hz DisplayPort: 4096x2304@60 Hz HDMI : 1920x1080@60 Hz
Dual AMD Radeon R5 430	Discrete	N/A	GDDR5	2GB	DisplayPort 1.2 Multiple Video option (VGA, DP1.2, HDMI 2.0 and USB Type-C Alt-mode)	VGA: 2048x1536@60 Hz DisplayPort: 4096x2304@60 Hz HDMI : 1920x1080@60 Hz

Audio

Table 11. Audio specifications

Controller	Realtek ALC3234
Type	Integrated
Speakers	Internal Business speaker (mono)
Interface	<ul style="list-style-type: none"> ● AC511 Sound Bar (optional) ● Microsoft PlayReady3 Ready ● Multi-streaming audio support

Table 11. Audio specifications (continued)

	<ul style="list-style-type: none"> • Stereo headset/mic combo
Internal speaker amplifier	2W (RMS) per channel

Storage

Table 12. Storage specifications

Type	Form factor	Interface	Capacity
Solid-State Drive (SSD)	M.2 2280/2230	<ul style="list-style-type: none"> • SATA AHCI, Up to 6 Gbps • PCIe 3 x4 NVME, Up to 32 Gbps 	Up to 512 GB
Hard drive (HDD)	2.5 and 3.5 inch	SATA AHCI, Up to 6 Gbps	Up to 2 TB at 5400/7200 RPM
Solid State Hybrid Drive	One 2.5 inch	SATA AHCI, Up to 6 Gbps	2.5 inch 1 TB at 5400 RPM
Optical drive	1 Slim	SATA AHCI, Up to 6 Gbps	
Intel Optane Memory	2.5 and 3.5 inch		Up to 2 TB at 5400/7200 RPM

Power supply

Table 13. Power supply

Input Voltage	90 - 264 VAC, 47 Hz - 63 Hz
Input current (maximum)	4.2A/2.1A

Security

Table 14. Security

Specifications	Optiplex XE3 Small Form Factor
<ul style="list-style-type: none"> • Trusted Platform Module (Discrete TPM Enabled) • Discrete TPM Disabled 	Integrated on system board
Cable Cover	Optional
Chassis Intrusion Switch	Standard
Dell Smartcard Keyboard	Optional
Chassis lock slot and loop support	Standard

¹TPM is not available in all countries.

Environmental


 **NOTE:** For more details on Dell environmental features, please go to the environmental attributes section. See your specific region for availability.

Table 15. Environmental


Energy efficient power supply	Standard
BFR/PVC-free chassis	No
Vertical orientation packaging support	Yes
Recyclable packaging	Yes
MultiPack packaging	Optional, US only

Software


Topics:

- [Downloading drivers](#)
- [Downloading the chipset driver](#)
- [Downloading graphic drivers](#)
- [Intel Wi-Fi and Bluetooth drivers](#)
- [Realtek HD audio drivers](#)

Downloading drivers

1. Turn on the computer.
2. Go to **Dell.com/support**.
3. Click **Product Support**, enter the Service Tag of your computer, and then click **Submit**.
 **NOTE:** If you do not have the Service Tag, use the auto detect feature or manually browse for your computer model.
4. Click **Drivers and Downloads**.
5. Select the operating system installed on your computer.
6. Scroll down the page and select the driver to install.
7. Click **Download File** to download the driver for your computer.
8. Navigate to the folder where you saved the driver file, after the download is complete.
9. Double-click the driver file icon and follow the instructions on the screen.

Downloading the chipset driver

1. Turn on the computer.
2. Go to **Dell.com/support**.
3. Click **Product Support**, enter the Service Tag of your computer, and then click **Submit**.
 **NOTE:** If you do not have the Service Tag, use the autodetect feature or manually browse for your computer model.
4. Click **Drivers and Downloads**.
5. Select the operating system installed in your computer.
6. Scroll down the page, expand **Chipset**, and select your chipset driver.
7. Click **Download File** to download the latest version of the chipset driver for your computer.
8. After the download is complete, navigate to the folder where you saved the driver file.
9. Double-click the chipset driver file icon and follow the instructions on the screen.

Intel chipset drivers

Verify if the Intel chipset drivers are already installed in the computer.

 **NOTE:** Click **Start > Control Panel > Device Manager**

or

In Search the web and Windows, type **Device Manager**

Table 16. Intel chipset drivers

Before installation	After installation

Downloading graphic drivers

1. Turn on the computer.
2. Go to **Dell.com/support**.
3. Click **Product Support**, enter the Service Tag of your computer, and then click **Submit**.

NOTE: If you do not have the Service Tag, use the auto detect feature or manually browse for your computer model.
4. Click **Drivers and Downloads**.
5. Click **Find it myself** tab.
6. Select the operating system installed on your computer.
7. Scroll down the page and select the graphic driver to install.
8. Click **Download File** to download the graphic driver for your computer.
9. After the download is complete, navigate to the folder where you saved the graphic driver file.
10. Double-click the graphic driver file icon and follow the instructions on the screen.

Intel HD Graphics drivers

Verify if the Intel HD Graphics drivers are already installed in the computer.

NOTE: Click **Start > Control Panel > Device Manager**.

or

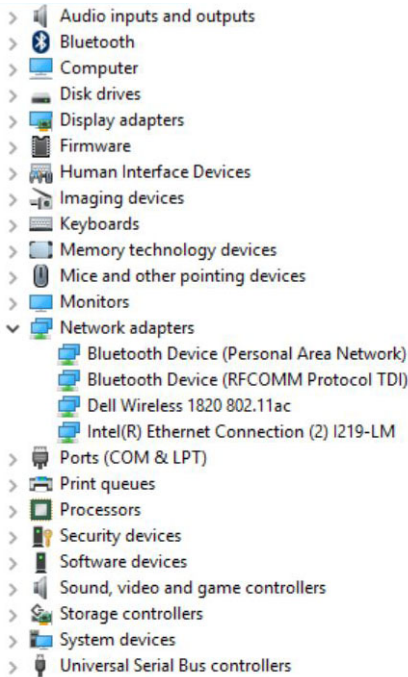
Tap Search the web and Windows and type **Device Manager**

Table 17. Intel HD Graphics drivers

Before installation	After installation
<ul style="list-style-type: none"> ▼ Display adapters <ul style="list-style-type: none"> Microsoft Basic Display Adapter ▼ Sound, video and game controllers <ul style="list-style-type: none"> High Definition Audio Device High Definition Audio Device 	<ul style="list-style-type: none"> ▼ Display adapters <ul style="list-style-type: none"> Intel(R) HD Graphics 530

Intel Wi-Fi and Bluetooth drivers

In the Device Manager, check if the network card driver is installed. Install the driver updates from dell.com/



support. In the Device Manager, check if the Bluetooth driver is installed. Install the driver updates from dell.com/support.

In the Device Manager, check if the Bluetooth driver is installed. Install the

Downloading the Wi-Fi driver

1. Turn on your computer.
2. Go to dell.com/support.
3. Click **Product Support**, enter the Service Tag of your computer and click **Submit**.

NOTE: If you do not have the Service Tag, use the auto-detect feature or manually browse for your computer model.

4. Click **Drivers & downloads > Find it myself**.
5. Scroll down the page and expand **Network**.
6. Click **Download** to download the Wi-Fi driver for your computer.
7. After the download is complete, navigate to the folder where you saved the Wi-Fi driver file.
8. Double-click the driver file icon and follow the instructions on the screen.

Realtek HD audio drivers

Verify if the Realtek audio drivers are already installed in the computer.

Table 18. Realtek HD audio drivers



Downloading the audio driver



1. Turn on your computer.
2. Go to **dell.com/support**.
3. Click **Product support**, enter the Service Tag of your computer, and then click **Submit**.
NOTE: If you do not have the Service Tag, use the auto-detect feature or manually browse for your computer model.
4. Click **Drivers & downloads > Find it myself**.
5. Scroll down the page and expand **Audio**.
6. Click **Download** to download the audio driver.
7. Save the file, and after the download is complete, navigate to the folder where you saved the audio driver file.
8. Double-click the audio driver file icon and follow the instructions on the screen to install the driver.

Getting help and contacting Dell

Self-help resources


You can get information and help on Dell products and services using these self-help resources:


Table 19. Self-help resources

Self-help resources	Resource location
Information about Dell products and services	www.dell.com
My Dell app	
Tips	
Contact Support	In Windows search, type <code>Contact Support</code> , and press Enter.
Online help for operating system	www.dell.com/support/windows
Access top solutions, diagnostics, drivers and downloads, and learn more about your computer through videos, manuals and documents.	Your Dell computer is uniquely identified by a Service Tag or Express Service Code. To view relevant support resources for your Dell computer, enter the Service Tag or Express Service Code at www.dell.com/support . For more information on how to find the Service Tag for your computer, see Locate the Service Tag on your computer .
Dell knowledge base articles for a variety of computer concerns	<ol style="list-style-type: none"> 1. Go to www.dell.com/support. 2. On the menu bar at the top of the Support page, select Support > Knowledge Base. 3. In the Search field on the Knowledge Base page, type the keyword, topic, or model number, and then click or tap the search icon to view the related articles.

Contacting Dell

To contact Dell for sales, technical support, or customer service issues, see www.dell.com/contactdell.

 **NOTE:** Availability varies by country/region and product, and some services may not be available in your country/region.

 **NOTE:** If you do not have an active Internet connection, you can find contact information about your purchase invoice, packing slip, bill, or Dell product catalog.

Revision history

Tracks all updates that are made to the document. It typically includes the date of change, version number, and a brief description of the modification. This log helps maintain transparency, accountability, and a clear timeline of progress.

Table 20. Revision history

Revision	Date	Description
A00	22-05-2018	Original publish date.
A03	09-10-2025	<ul style="list-style-type: none">• Revision Topic added