


OptiPlex 7080 Micro Cable Cover

Install Guide



Notes, cautions, and warnings

 **NOTE:** A NOTE indicates important information that helps you make better use of your product.

 **CAUTION:** A CAUTION indicates either potential damage to hardware or loss of data and tells you how to avoid the problem.




 **WARNING:** A WARNING indicates a potential for property damage, personal injury, or death.

Contents

Chapter 1: Before you begin	4
Chapter 2: Dell OptiPlex Micro Cable Cover.....	5
Chapter 3: After installing the accessory.....	9
Chapter 4: Getting help.....	10
Contacting Dell.....	10

Before you begin


Steps

1. Save and close all open files and exit all open applications.
2. Shut down your system: Click **Start** >  **Power** > **Shut down** .
 -  **NOTE:** If you are using a Linux operating system, see the documentation of your operating system for shut-down instructions.
3. Disconnect your system and all attached devices from their electrical outlets.
4. Disconnect all attached network devices and peripherals, such as keyboard, mouse, and monitor from your system.
 -  **CAUTION:** To disconnect a network cable, first unplug the cable from your system and then unplug the cable from the network device.
5. If the system unit or the adapter is being installed on the monitor:
 - a. Disconnect the power and all the display cables from the monitor.
 - b. Remove the stand from the monitor and place the monitor on a clean and soft surface.

Dell OptiPlex Micro Cable Cover

The cable cover for the OptiPlex 7080 Micro system protects the ports and organize cables that are connected to the system unit.

Steps

1. Follow the instructions in [before you begin](#).
2.  **NOTE:** Images that are shown below may vary depending on your system configuration.

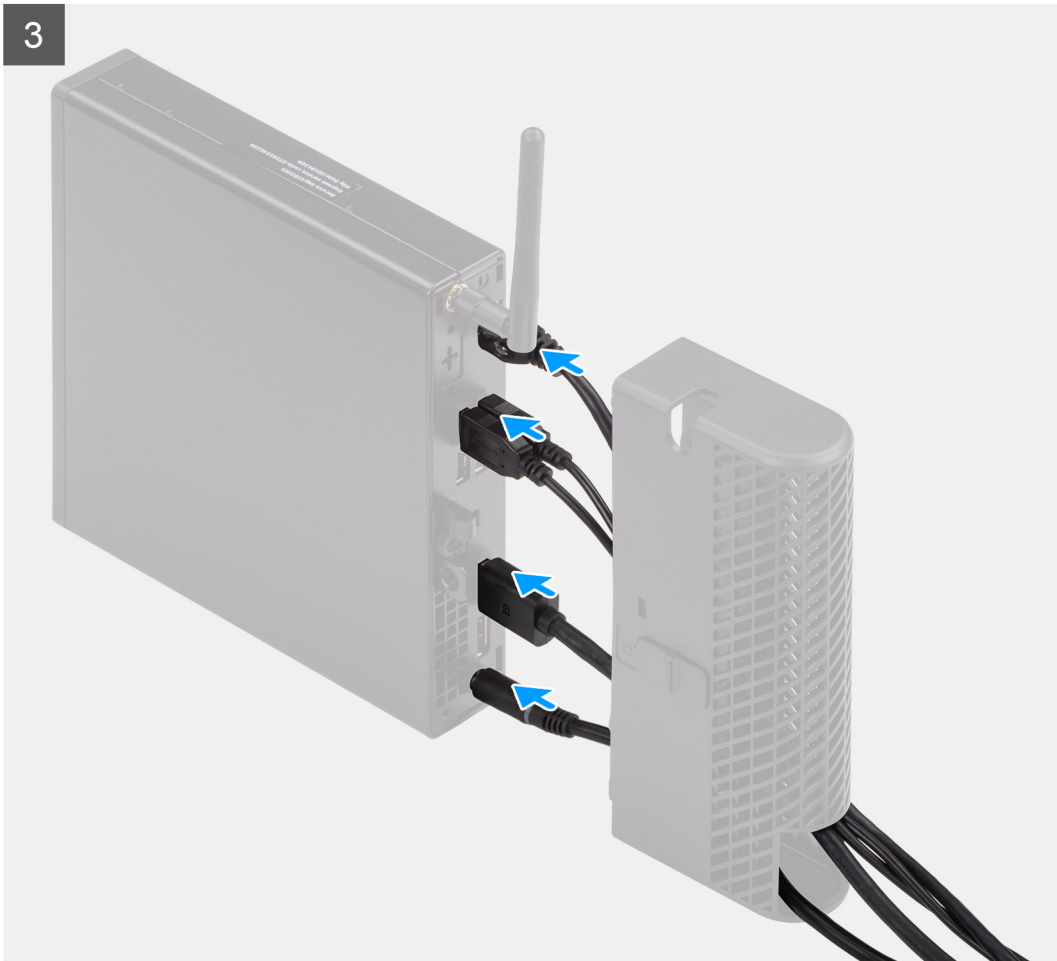
Remove the thumbscrew and the cable clip from the rear of the system unit.

3. Align the rear bracket along with the cable clip to the back of the system.
4. Use the thumbscrew to secure the rear bracket along with cable clip to the back of the system.
5. Route the cables through the slot on the cable cover and connect the cables to their respective ports.



6. Turn the antenna outwards to pass through the antenna slot at the top of the cable cover.

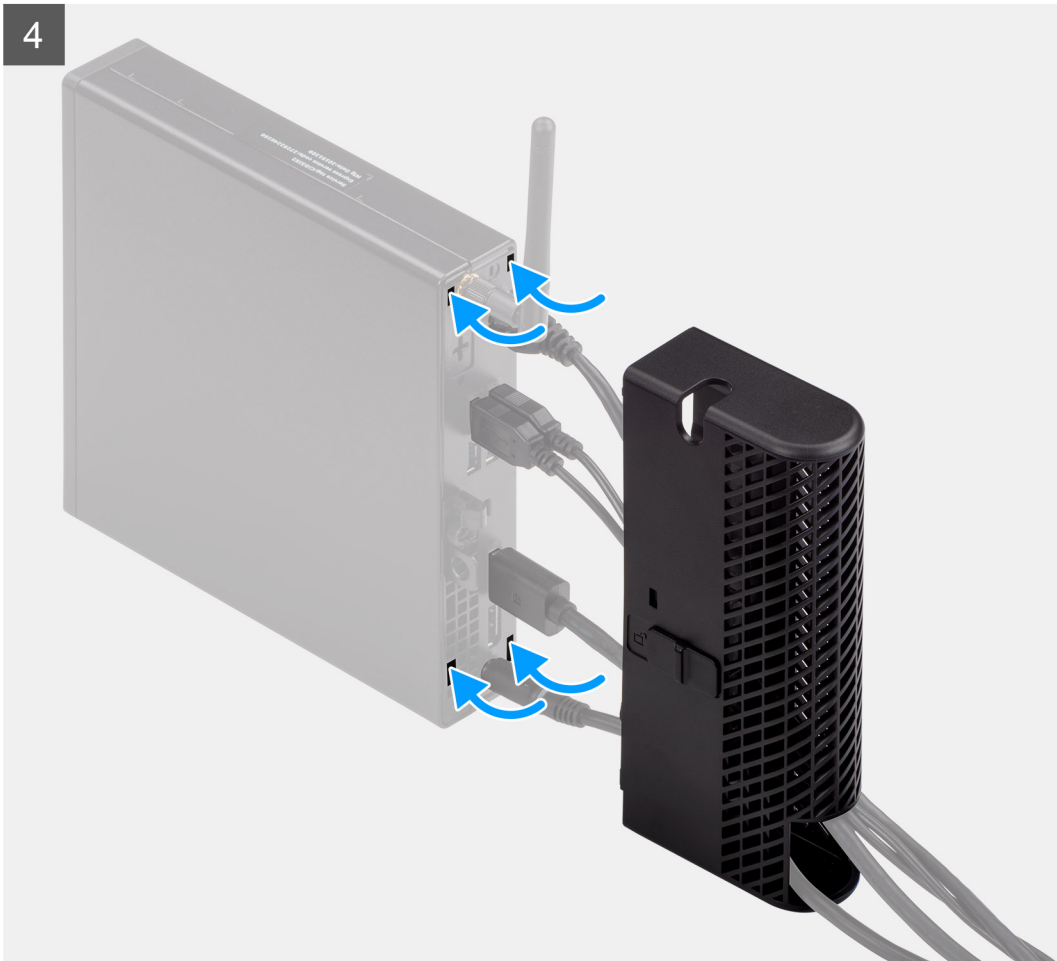
3



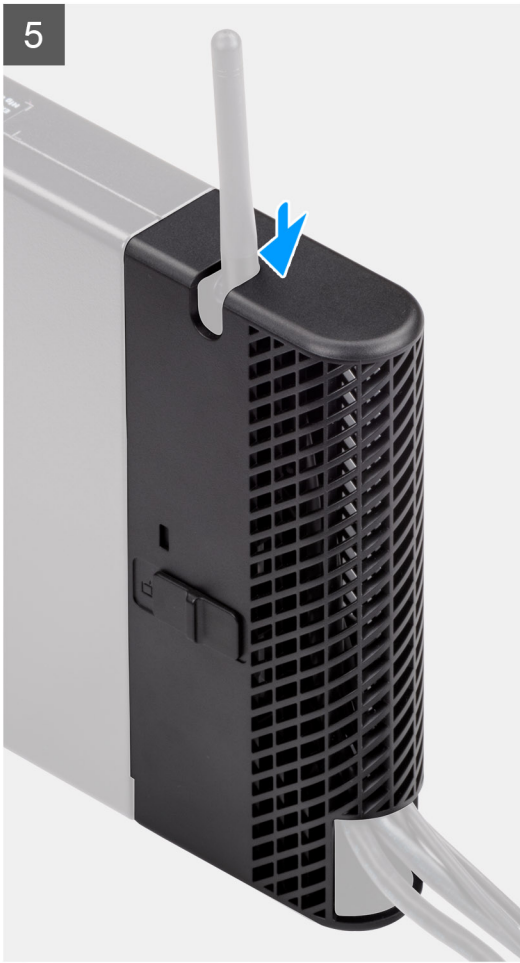
7. Align the cable cover retaining hooks into the slots on the OptiPlex 7080 Micro chassis.

CAUTION: Take care not to bend or break the delicate plastic hooks.

4



- 8. Gently press down on the cable cover until it clicks into place.
- 9. Slide the latch to lock the cable cover in place.



i **NOTE:** For added security, use the Kensington cable lock to secure the system unit.

After installing the accessory

Steps

1. Replace all screws and ensure that no stray screws remain.
2. Connect any external devices, peripherals, or cables you removed before working on your system.
3. Connect your system and all attached devices to their electrical outlets.
4. Turn on your system.


Getting help

Topics:

- [Contacting Dell](#)

Contacting Dell

Prerequisites

 **NOTE:** If you do not have an active Internet connection, you can find contact information on your purchase invoice, packing slip, bill, or Dell product catalog.

About this task

Dell provides several online and telephone-based support and service options. Availability varies by country and product, and some services may not be available in your area. To contact Dell for sales, technical support, or customer service issues:

Steps

1. Go to **Dell.com/support**.
2. Select your support category.
3. Verify your country or region in the **Choose a Country/Region** drop-down list at the bottom of the page.
4. Select the appropriate service or support link based on your need.