

OptiPlex 7050 Micro

Owner's Manual


Contents

Chapter 1: Working on your computer	6
Safety instructions.....	6
Before working inside your computer.....	7
Turning off your computer.....	7
Turning off your — Windows.....	7
Turning off your computer — Windows 7.....	7
After working inside your computer.....	8
Chapter 2: Disassembly and reassembly	9
Recommended tools.....	9
Screw information.....	9
Antenna.....	10
Removing antenna.....	10
Installing antenna.....	10
Cover.....	11
Removing cover.....	11
Installing cover.....	12
Coin-cell battery.....	12
Removing coin cell battery.....	12
Installing coin cell battery.....	13
Storage.....	13
Removing 2.5–inch drive assembly.....	13
Removing the 2.5–inch drive from the drive bracket.....	14
Installing the drive into the drive bracket.....	14
Installing 2.5–inch drive assembly.....	15
WLAN card.....	15
Removing the WLAN card.....	15
Installing the WLAN card.....	16
M.2 PCIe SSD	16
Removing the M.2 PCIe SSD	16
Installing the M.2 PCIe SSD	17
System fan.....	17
Removing system fan.....	17
Installing system fan.....	19
Speaker.....	19
Removing speaker.....	19
Installing speaker.....	20
Memory modules.....	20
Removing memory module.....	20
Installing memory module.....	21
Heat sink	21
Removing heat sink.....	21
Installing heat sink.....	22
Processor.....	22

Removing processor.....	22
Installing processor.....	23
System board.....	24
Removing system board.....	24
Installing system board.....	26
System board layout.....	27
Chapter 3: M.2 Intel Optane Memory Module 16 GB.....	28
Overview.....	28
Intel®Optane™ Memory Module Driver Requirements.....	28
M.2 Intel Optane Memory Module 16 GB.....	28
Product specifications.....	30
Environmental Conditions.....	31
Troubleshooting.....	31
Chapter 4: Technology and components.....	33
USB features.....	33
HDMI 1.4.....	35
Chapter 5: BIOS setup.....	36
BIOS overview.....	36
Entering BIOS setup program.....	36
Navigation keys.....	36
One Time Boot menu.....	37
System Setup options.....	37
Updating the BIOS.....	44
Updating the BIOS in Windows.....	44
Updating the BIOS in Linux and Ubuntu.....	45
Updating the BIOS using the USB drive in Windows.....	45
Updating the BIOS from the F12 One-Time boot menu.....	45
System and setup password.....	46
Assigning a system setup password.....	46
Deleting or changing an existing system setup password.....	47
Clearing CMOS settings.....	47
Clearing BIOS (System Setup) and System passwords.....	48
Chapter 6: Software.....	49
Supported operating systems.....	49
Downloading drivers.....	49
Downloading the chipset driver.....	49
Intel chipset drivers.....	50
Intel HD Graphics drivers.....	50
Chapter 7: Troubleshooting your computer.....	52
Power-Supply Unit Built-in Self-Test	52
Dell SupportAssist Pre-boot System Performance Check diagnostics.....	52
Running the SupportAssist Pre-Boot System Performance Check.....	52
Diagnostic and Power LED codes.....	53
Power LED issue.....	57

Diagnostic error messages.....	58
Verifying system memory	60
Verifying system memory in setup.....	61
Testing memory using ePSA.....	61
System error messages.....	61
Recovering the operating system.....	62
Real-Time Clock (RTC Reset).....	62
Backup media and recovery options.....	62
Wi-Fi power cycle.....	62
Chapter 8: Technical specifications.....	63
Processor specifications.....	63
Memory specifications.....	64
Video specifications.....	64
Audio specifications.....	64
Communication specifications.....	64
Storage specifications.....	64
Ports and connectors specifications.....	65
Power supply specifications.....	65
Physical dimension specifications.....	66
Controls and lights specifications.....	66
Environmental specifications.....	66
Chapter 9: Getting help and contacting Dell.....	68

Notes, cautions, and warnings

 **NOTE:** A NOTE indicates important information that helps you make better use of your product.

 **CAUTION:** A CAUTION indicates either potential damage to hardware or loss of data and tells you how to avoid the problem.

 **WARNING:** A WARNING indicates a potential for property damage, personal injury, or death.

Working on your computer

Topics:

- Safety instructions
- Before working inside your computer
- Turning off your computer
- After working inside your computer

Safety instructions

Prerequisites

Use the following safety guidelines to protect your computer from potential damage and to ensure your personal safety. Unless otherwise noted, each procedure included in this document assumes that the following conditions exist:

- You have read the safety information that shipped with your computer.
- A component can be replaced or, if purchased separately, installed by performing the removal procedure in reverse order.

About this task

⚠ WARNING: Before working inside your computer, read the safety information that shipped with your computer. For additional safety best practices information, see the [Regulatory Compliance Homepage](#)

⚠ CAUTION: Many repairs may only be done by a certified service technician. You should only perform troubleshooting and simple repairs as authorized in your product documentation, or as directed by the online or telephone service and support team. Damage due to servicing that is not authorized by Dell is not covered by your warranty. Read and follow the safety instructions that came with the product.

⚠ CAUTION: To avoid electrostatic discharge, ground yourself by using a wrist grounding strap or by periodically touching an unpainted metal surface at the same time as touching a connector on the back of the computer.

⚠ CAUTION: Handle components and cards with care. Do not touch the components or contacts on a card. Hold a card by its edges or by its metal mounting bracket. Hold a component such as a processor by its edges, not by its pins.

⚠ CAUTION: When you disconnect a cable, pull on its connector or on its pull-tab, not on the cable itself. Some cables have connectors with locking tabs; if you are disconnecting this type of cable, press in on the locking tabs before you disconnect the cable. As you pull connectors apart, keep them evenly aligned to avoid bending any connector pins. Also, before you connect a cable, ensure that both connectors are correctly oriented and aligned.


ⓘ NOTE: Disconnect all power sources before opening the computer cover or panels. After you finish working inside the computer, replace all covers, panels, and screws before connecting to the power source.

⚠ CAUTION: Exercise caution when handling Lithium-ion batteries in laptops. Swollen batteries should not be used and should be replaced and disposed properly.


ⓘ NOTE: The color of your computer and certain components may appear differently than shown in this document.


Before working inside your computer

About this task

 **NOTE:** The images in this document may differ from your computer depending on the configuration you ordered.

Steps

1. Save and close all open files and exit all open applications.
2. Shut down your computer. For Windows operating system, click **Start** >  **Power** > **Shut down**.

 **NOTE:** If you are using a different operating system, see the documentation of your operating system for shut-down instructions.

3. Disconnect your computer and all attached devices from their electrical outlets.
4. Disconnect all attached network devices and peripherals, such as keyboard, mouse, and monitor from your computer.

 **CAUTION:** To disconnect a network cable, first unplug the cable from your computer and then unplug the cable from the network device.

5. Remove any media card and optical disc from your computer, if applicable.


Turning off your computer

Turning off your — Windows


About this task

 **CAUTION:** To avoid losing data, save and close all open files and exit all open programs before you turn off your computer .

Steps

1. Click or tap .

2. Click or tap  and then click or tap **Shut down**.

 **NOTE:** Ensure that the computer and all attached devices are turned off. If your computer and attached devices did not automatically turn off when you shut down your operating system, press and hold the power button for about 6 seconds to turn them off.

Turning off your computer — Windows 7

About this task

 **CAUTION:** To avoid losing data, save and close all open files and exit all open programs before you turn off your computer.

Steps

1. Click **Start**.
2. Click **Shut Down**.

i **NOTE:** Ensure that the computer and all attached devices are turned off. If your computer and attached devices did not automatically turn off when you shut down your operating system, press and hold the power button for about 6 seconds to turn them off.

After working inside your computer

About this task

i **NOTE:** Leaving stray or loose screws inside your computer may severely damage your computer.

Steps

1. Replace all screws and ensure that no stray screws remain inside your computer.
2. Connect any external devices, peripherals, or cables you removed before working on your computer.
3. Replace any media cards, discs, or any other parts that you removed before working on your computer.
4. Connect your computer and all attached devices to their electrical outlets.
5. Turn on your computer.

Disassembly and reassembly

Topics:

- Recommended tools
- Screw information
- Antenna
- Cover
- Coin-cell battery
- Storage
- WLAN card
- M.2 PCIe SSD
- System fan
- Speaker
- Memory modules
- Heat sink
- Processor
- System board

Recommended tools

The procedures in this document require the following tools:

- Small flat blade screwdriver
- Phillips # 1 screwdriver
- Small plastic scribe

Screw information

This topic lists the screw information.

Table 1. Screw size list

Component	Secured to	Screw type	Quantity
Top cover	Chassis(Bottom cover)	#6-32*9.3	1
System Board	Chassis	#6-32*5.4	3
HDD support bracket	Chassis	#6-32*5.4	1
SDD card and WiFi card Stand-off	Chassis	M3X4	2
Thermal Module Heatsink(35W)	Chassis	M3	4
Thermal Module Heatsink(65W)	Chassis	M3	3
System Speaker	Thermal Module Fan	M2.5X4	2
AUX antenna	Chassis	M3X3	1

Table 1. Screw size list (continued)

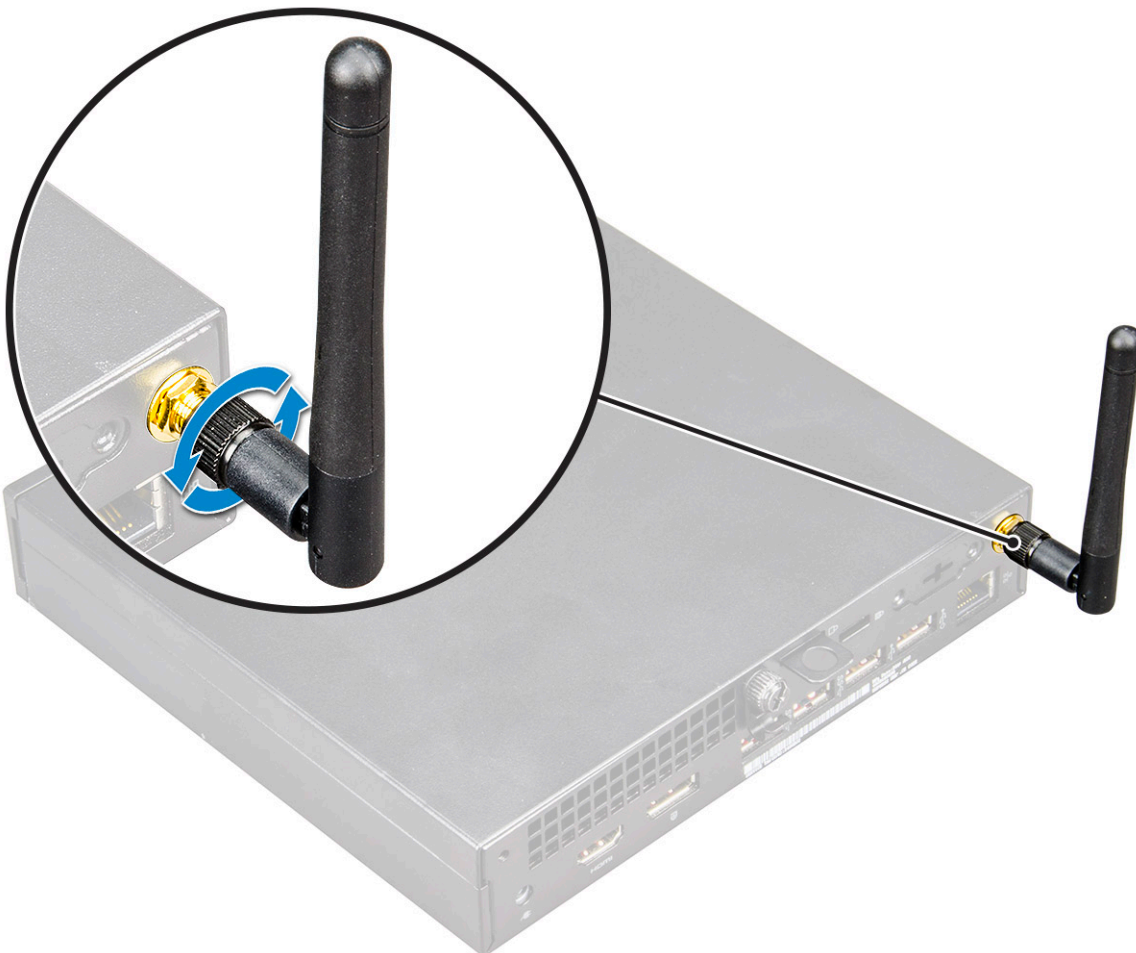
Component	Secured to	Screw type	Quantity
VGA module bracket/DP module bracket/PS2 COM module bracket	Chassis	M3X3	2
WiFi card	Stand off	M2X3.5	1
Solid-state drive	Stand off	M2X3.5	1

Antenna

Removing antenna

Steps

1. Follow the procedure in [Before working inside your computer](#).
2. Loosen the antenna screw to remove the antenna from the computer.



Installing antenna

Steps

1. Align the antenna and tighten the screw secure the antenna to the computer.

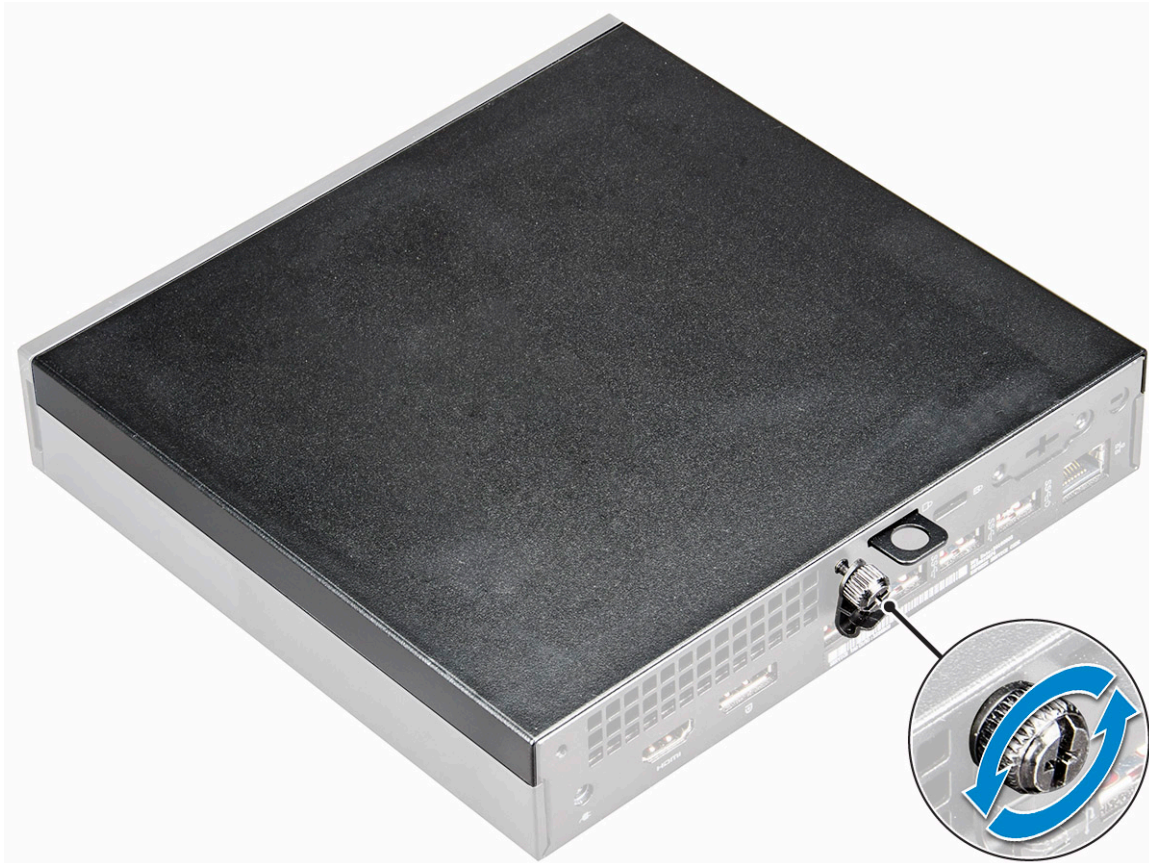
2. Follow the procedure in [After working inside your computer](#).

Cover

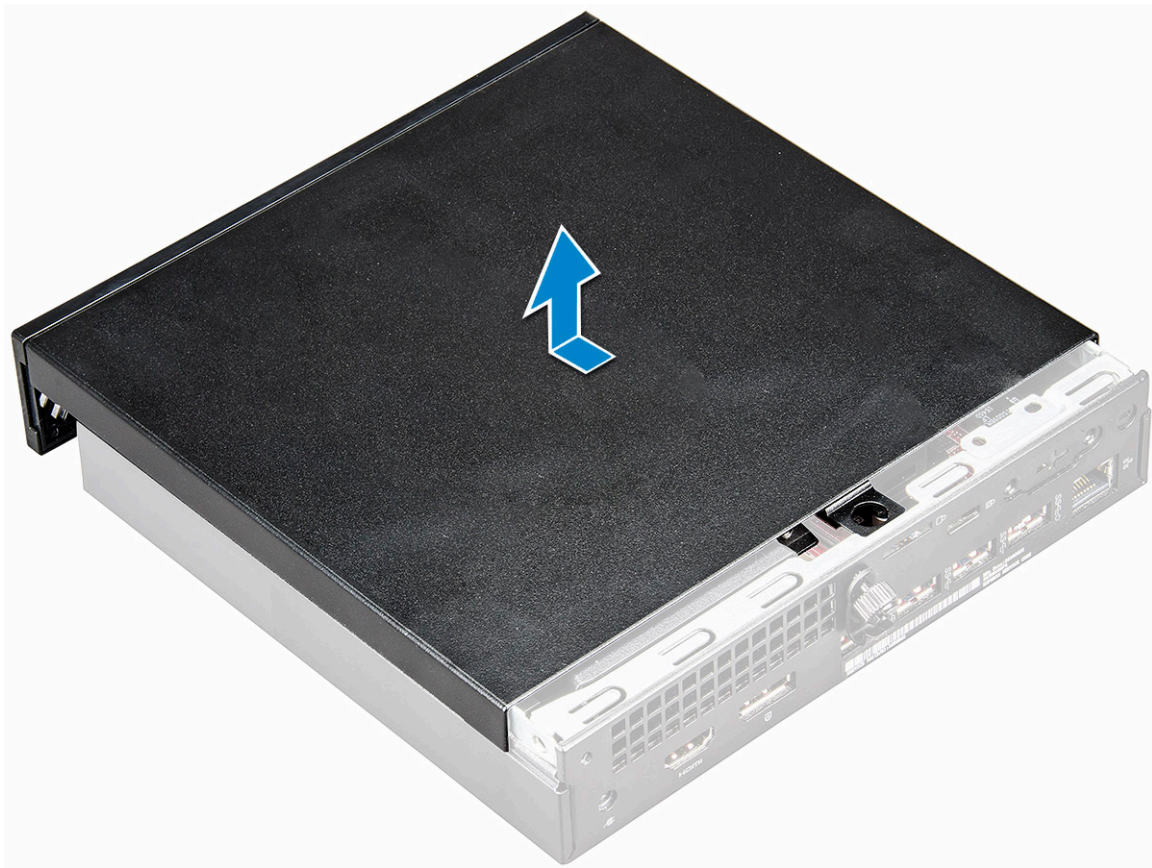
Removing cover

Steps

1. Follow the procedure in [Before working inside your computer](#).
2. To remove the cover:
 - a. Loosen the thumbscrew that secures the cover to the computer [1].



- b. Slide and lift the cover to remove from the computer.



i **NOTE:** You may need a plastic scribe to release the cover from the edges.

Installing cover

Steps

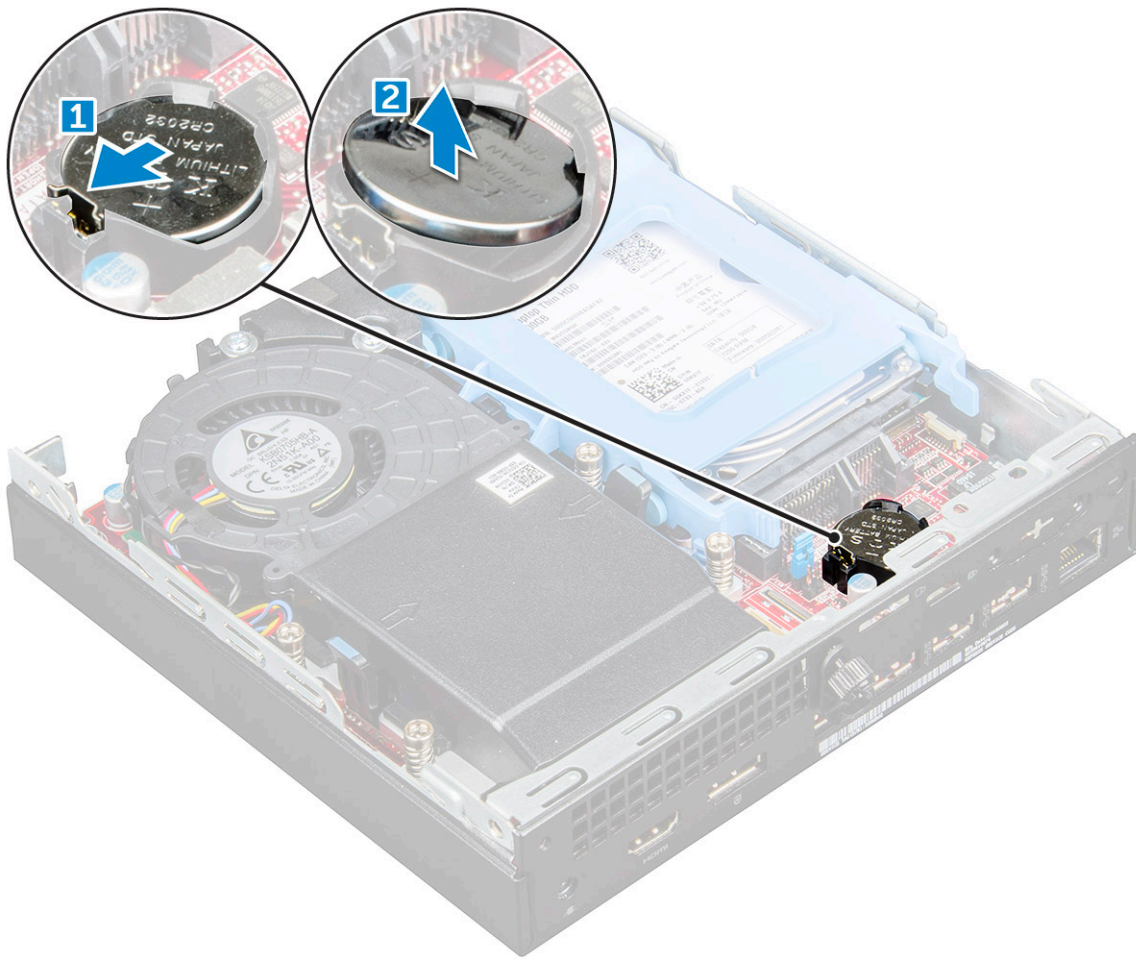
1. Place the cover on the computer.
2. Slide the cover toward the back of the computer to install it.
3. Tighten the thumbscrew to secure the cover to the computer.
4. Follow the procedure in [After working inside your computer](#).

Coin-cell battery

Removing coin cell battery

Steps

1. Follow the procedure in [Before working inside your computer](#).
2. Remove the [cover](#).
3. To remove the coin cell battery:
 - a. Press the release latch until the coin cell battery pops out [1].
 - b. Remove the coin cell battery from the system board [2].



Installing coin cell battery

Steps

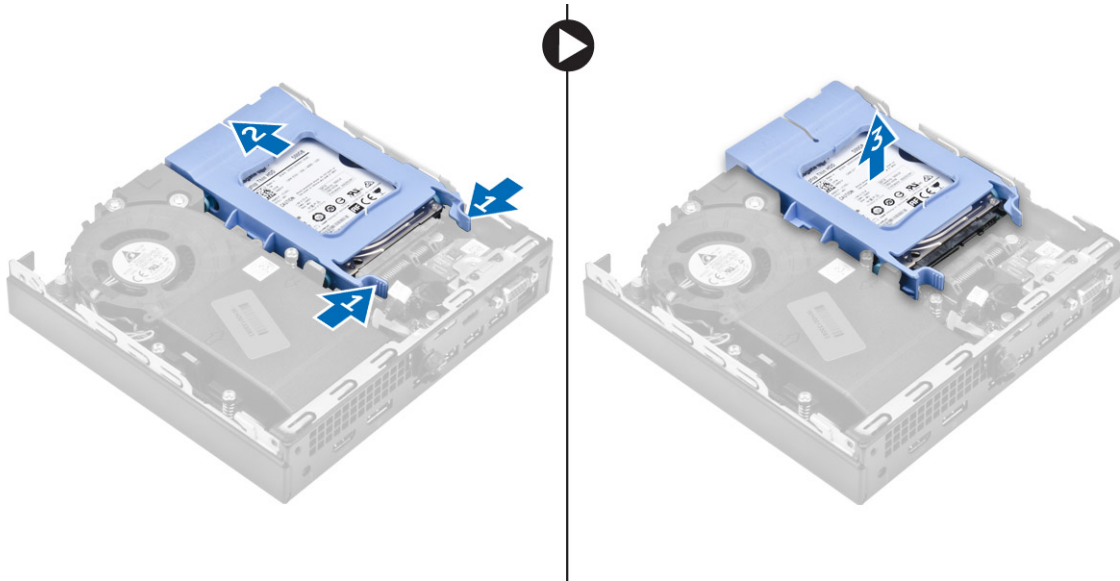
1. Hold the coin cell battery with the "+" sign facing up and slide it under the securing tabs at the positive side of the connector.
2. Press the battery into the connector until it locks into place.
3. Install the [cover](#).
4. Follow the procedure in [After working inside your computer](#).

Storage

Removing 2.5-inch drive assembly

Steps

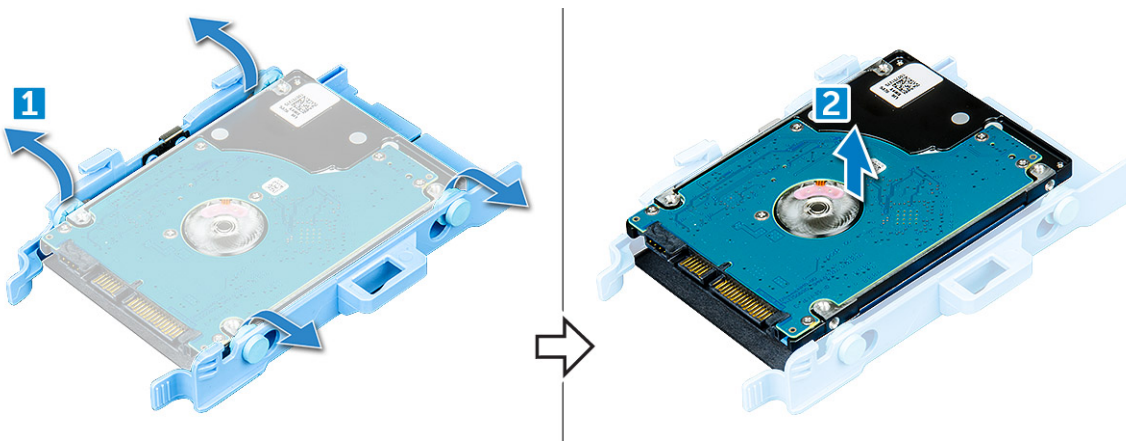
1. Follow the procedure in [Before working inside your computer](#).
2. Remove the [cover](#).
3. To remove the drive assembly:
 - a. Press the blue tabs on both sides of the drive assembly [1].
 - b. Push the drive assembly to release it from the computer [2].
 - c. Remove the drive assembly from the computer [3].



Removing the 2.5–inch drive from the drive bracket

Steps

1. Follow the procedure in [Before Working Inside Your Computer](#).
2. Remove the:
 - a. [cover](#)
 - b. [2.5–inch drive assembly](#)
3. To remove the drive bracket:
 - a. Pull one side of the drive bracket to disengage the pins on the bracket from the slots on the drive [1] and lift the drive [2].



Installing the drive into the drive bracket

Steps

1. Align and insert the pins on the drive bracket with the slots on one side of the drive.
2. Flex the other side of the drive bracket, and align and insert the pins on the bracket into the drive.
3. Install the:
 - a. [2.5–inch drive assembly](#)
 - b. [cover](#)
4. Follow the procedure in [After working inside your computer](#).

Installing 2.5-inch drive assembly

Steps

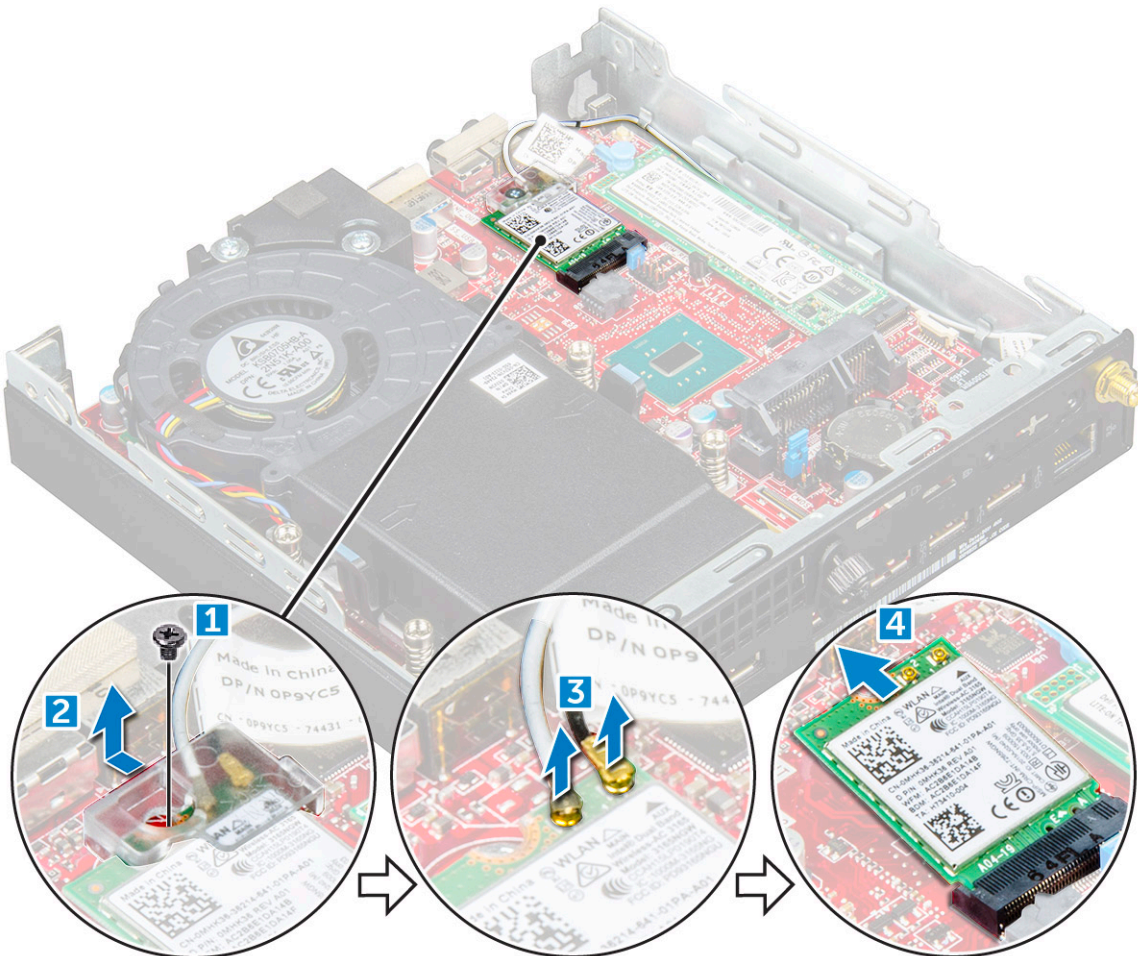
1. Insert the drive assembly into the slot on the computer.
2. Slide the drive assembly toward the connector until it clicks into place.
3. Install the [cover](#).
4. Follow the procedure in [After working inside your computer](#).

WLAN card

Removing the WLAN card

Steps

1. Follow the procedure in [Before working inside your computer](#).
2. Remove the:
 - a. [cover](#)
 - b. [hard drive assembly](#)
3. To remove the WLAN card:
 - a. Remove the screw that secures the plastic tab [1].
 - b. Remove the plastic tab to access the WLAN cables [2].
 - c. Disconnect the WLAN cables from the connectors on the WLAN card [3].
 - d. Lift the WLAN card from the connector on the system board [4].



Installing the WLAN card

Steps

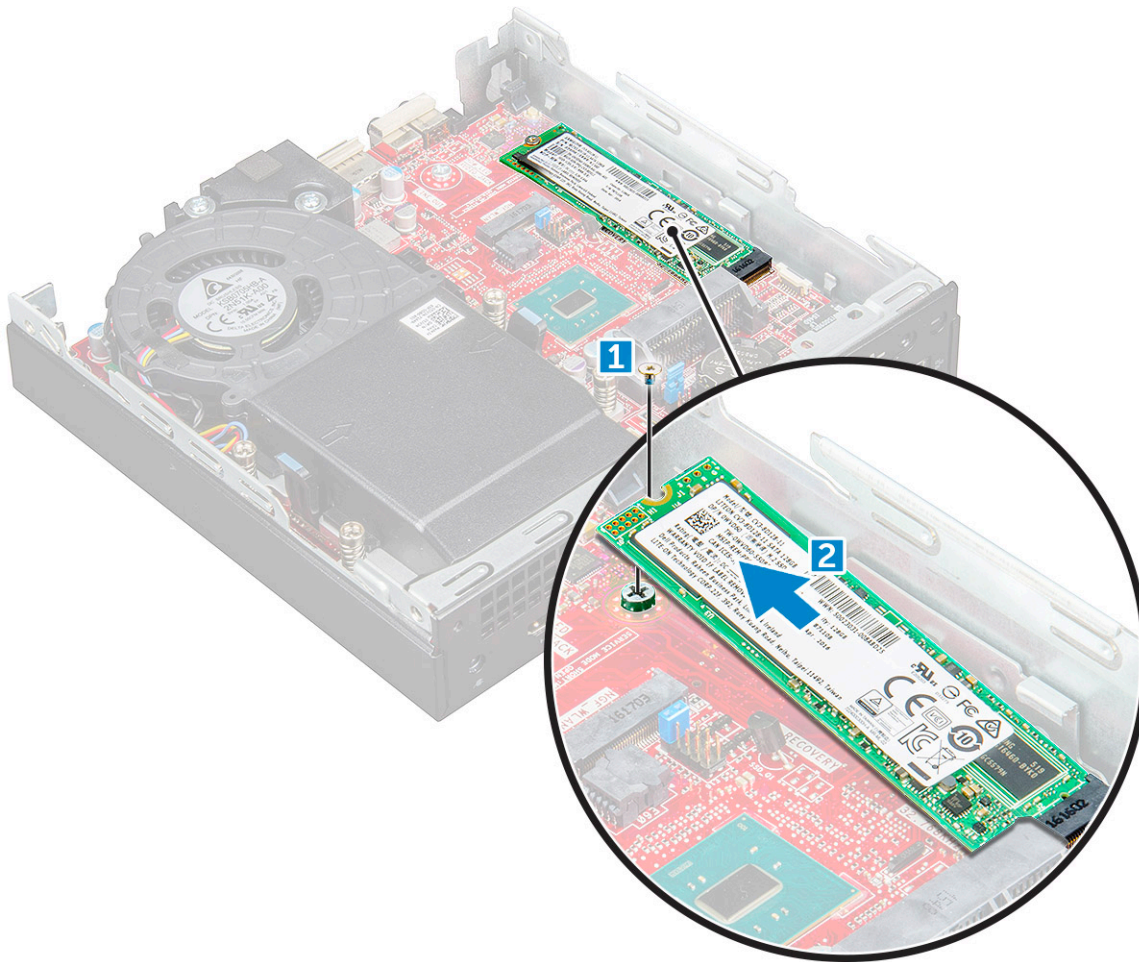
1. Insert the WLAN card into the connector on the system board.
2. Connect the WLAN antenna cables to the connectors on the WLAN card.
3. Place the plastic tab to secure the WLAN cables.
4. Tighten the screw to secure the plastic tab to the WLAN card.
5. Install the:
 - a. [hard drive assembly](#)
 - b. [cover](#)
6. Follow the procedure in [After working inside your computer](#).

M.2 PCIe SSD

Removing the M.2 PCIe SSD

Steps

1. Follow the procedure in [Before working inside your computer](#).
2. Remove the:
 - a. [cover](#)
 - b. [2.5-inch drive assembly](#)
3. To remove the M.2 PCIe SSD:
 - a. Remove the screw that secures the M.2 PCIe SSD [1].
 - b. Lift and pull out the PCIe SSD from its connector [2].



Installing the M.2 PCIe SSD

Steps

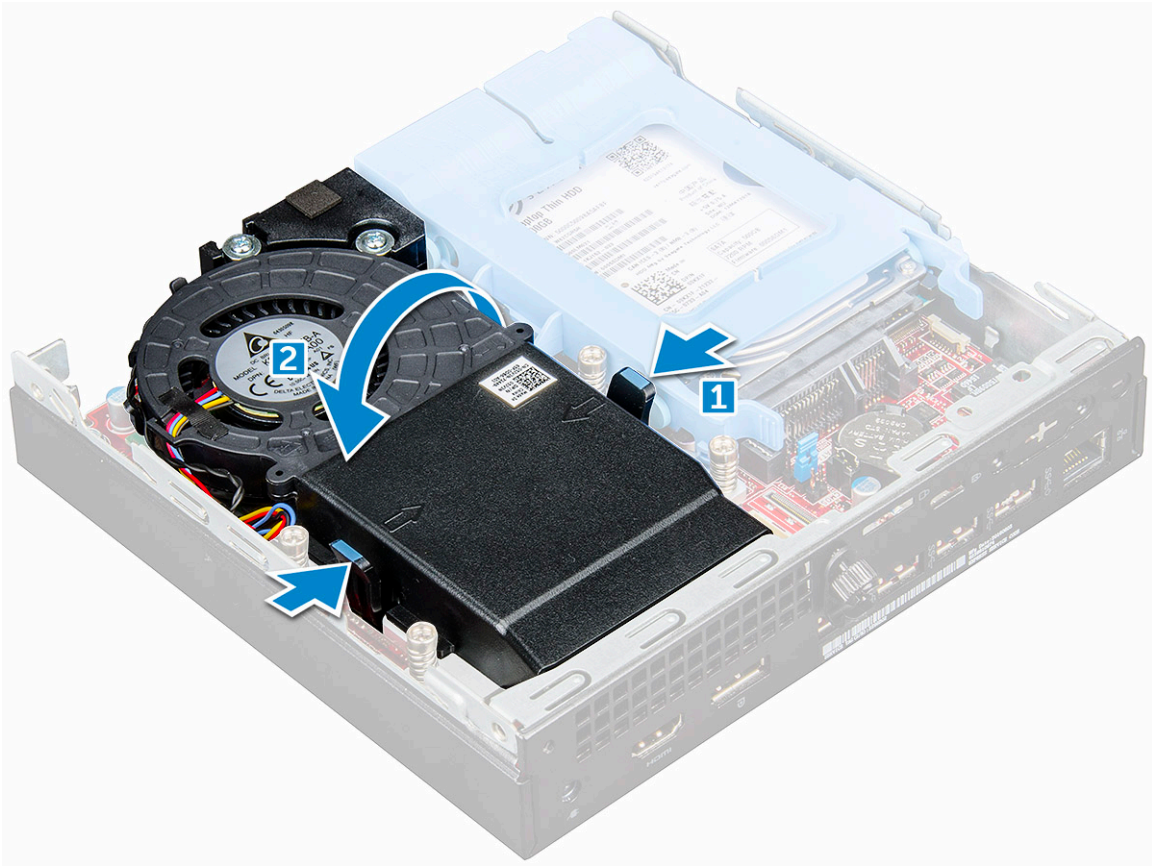
1. Insert the M.2 PCIe SSD to the connector.
2. Tighten the screw to secure the M.2 PCIe SSD to the system board.
3. Install the:
 - a. 2.5-inch drive assembly
 - b. cover
4. Follow the procedure in [After working inside your computer](#).

System fan

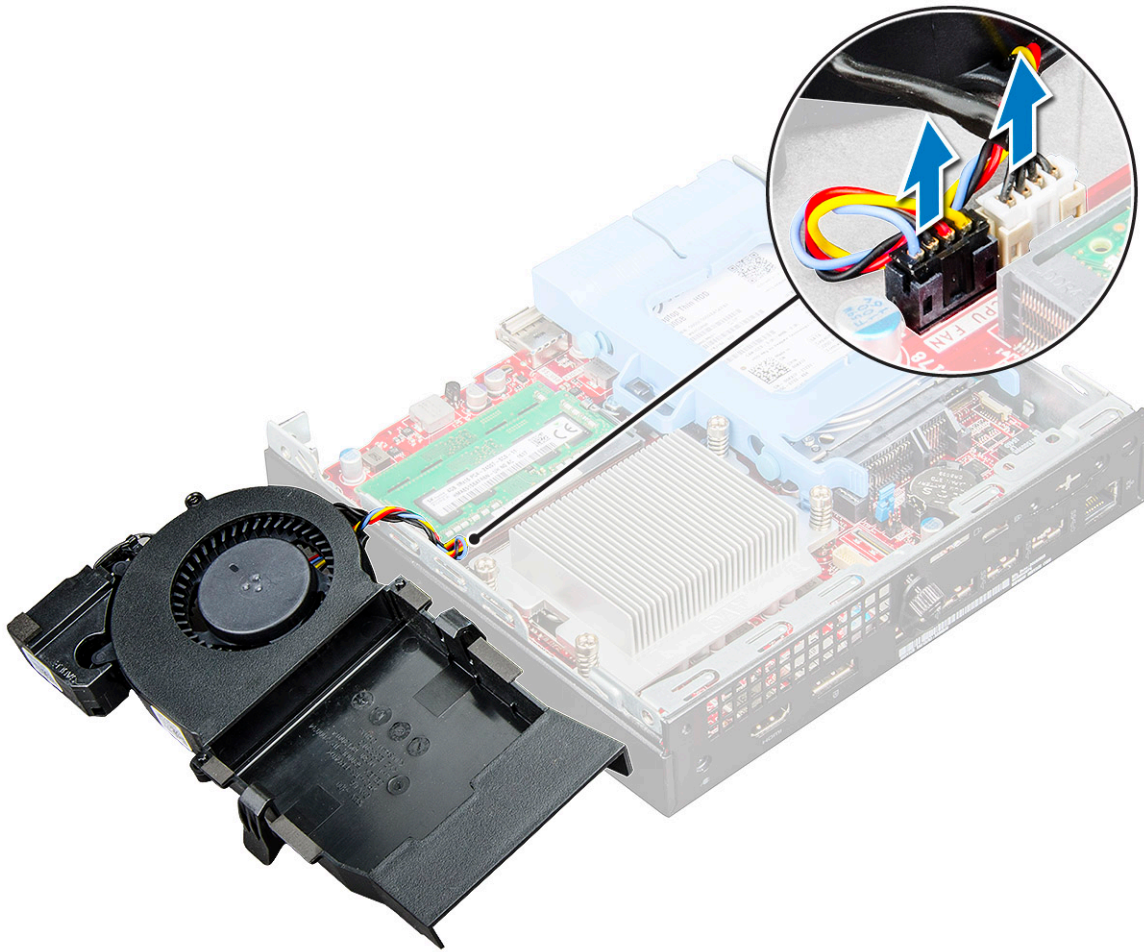
Removing system fan

Steps

1. Follow the procedure in [Before working inside your computer](#).
2. Remove the [cover](#).
3. To remove the system fan:
 - a. Press the blue tabs on both sides of the system fan [1].
 - b. Slide and lift the system fan to release it from the computer.
 - c. Turn the system fan over to remove it from the computer [2].



4. Disconnect the speaker cable and system fan cable from the connectors on the system board.



Installing system fan

Steps

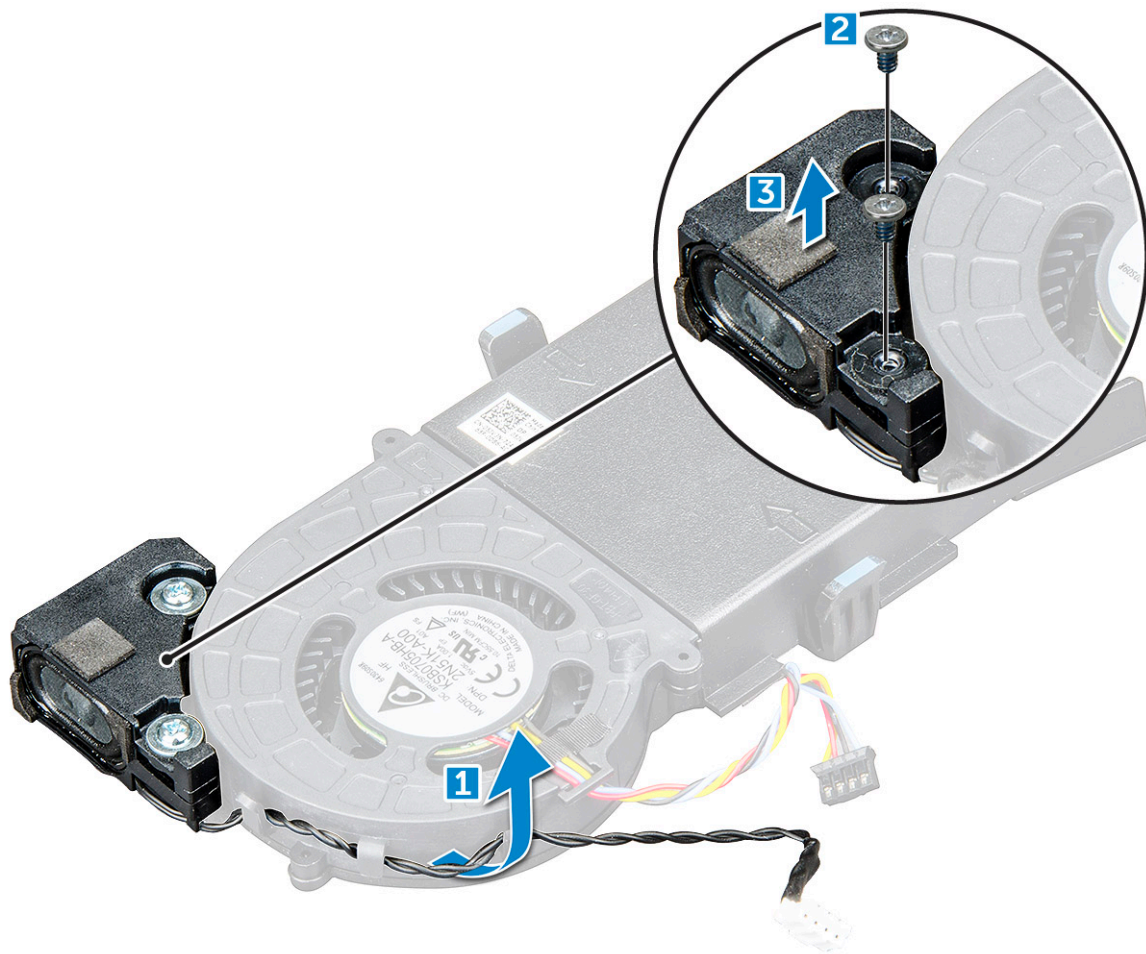
1. Connect the speaker cable and system fan cable to the connectors on the system board.
2. Place the system fan on the computer and slide the system fan until it clicks into place.
3. Install the [cover](#).
4. Follow the procedure in [After working inside your computer](#).

Speaker

Removing speaker

Steps

1. Follow the procedure in [Before working inside your computer](#).
2. Remove the:
 - a. [cover](#)
 - b. [system fan](#)
3. To remove the speaker:
 - a. Release the speaker cable from the retention hooks on the system fan [1].
 - b. Remove the M2.5X4 screws that secure the speaker to the system fan [2].
 - c. Remove the speaker from the system fan [3].



Installing speaker

Steps

1. Align the slots on the speaker with the slots on the system fan.
2. Tighten the M2.5X4 screws to secure the speaker to the system fan.
3. Route the speaker cable through the retention hooks on the system fan.
4. Install the:
 - a. [system fan](#)
 - b. [cover](#)
5. Follow the procedure in [After working inside your computer](#).

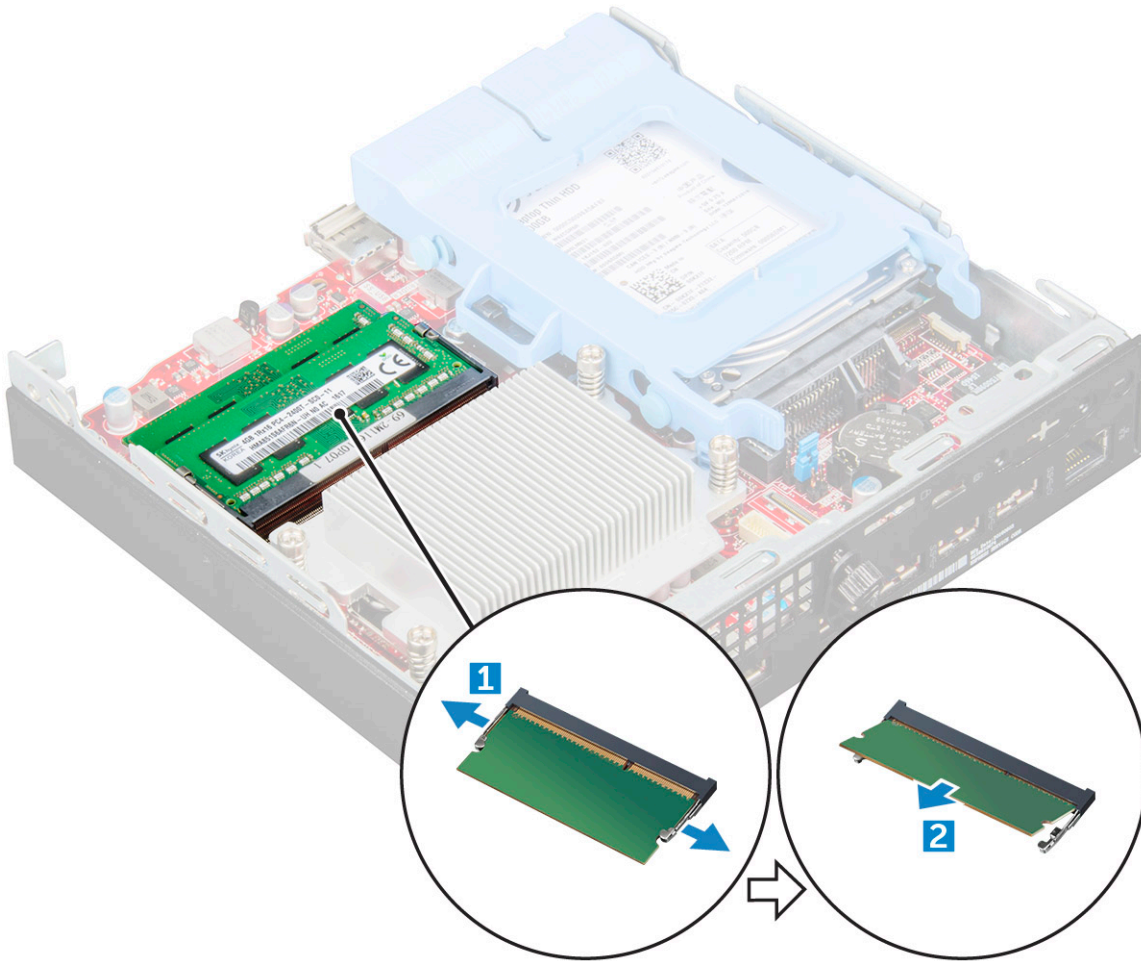
Memory modules

Removing memory module

Steps

1. Follow the procedure in [Before working inside your computer](#).
2. Remove the:
 - a. [cover](#)
 - b. [system fan](#)
3. To remove the memory module:

- a. Pull the securing clips from the memory module until the memory module pops up [1].
- b. Remove the memory module from the socket on the system board [2].



Installing memory module

Steps

1. Align the notch on the memory module with the tab on the memory module connector.
2. Insert the memory module into the memory module socket and press it until it clicks into place.
3. Install the:
 - a. [system fan](#)
 - b. [cover](#)
4. Follow the procedure in [After working inside your computer](#).

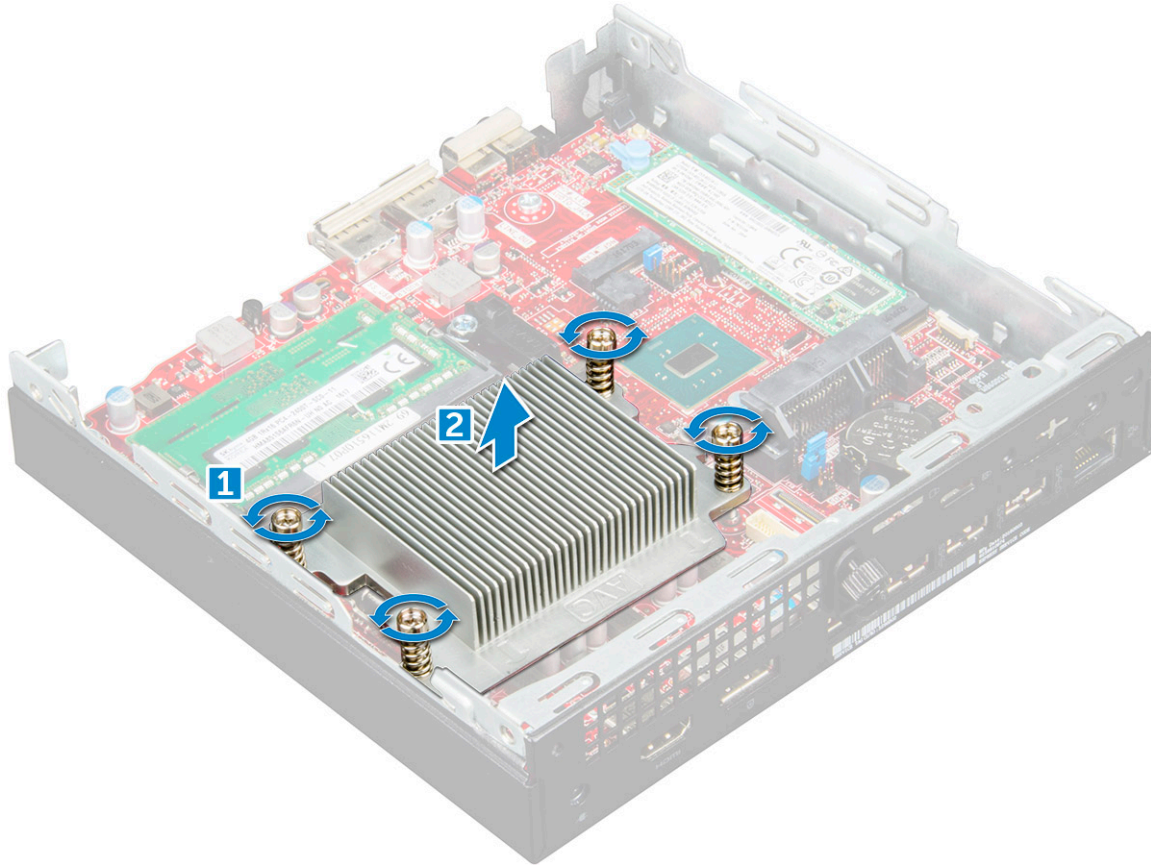
Heat sink

Removing heat sink

Steps

1. Follow the procedure in [Before working inside your computer](#).
2. Remove the:
 - a. [cover](#)
 - b. [2.5-inch drive assembly](#)

- c. [system fan](#)
- 3. To remove the heat sink:
 - a. Loosen the M3 screws that secure the heat sink to the computer [1].
 - i** **NOTE:** The 35 W CPU has four screws and the 65 W CPU has three screws.
 - b. Lift the heat sink away from the computer [2].



Installing heat sink

Steps

1. Place the heat sink on the processor.
2. Tighten the M3 screws to secure the heat sink to the system board.
3. Install the:
 - a. [system fan](#)
 - b. [2.5-inch drive assembly](#)
 - c. [cover](#)
4. Follow the procedure in [After working inside your computer](#).

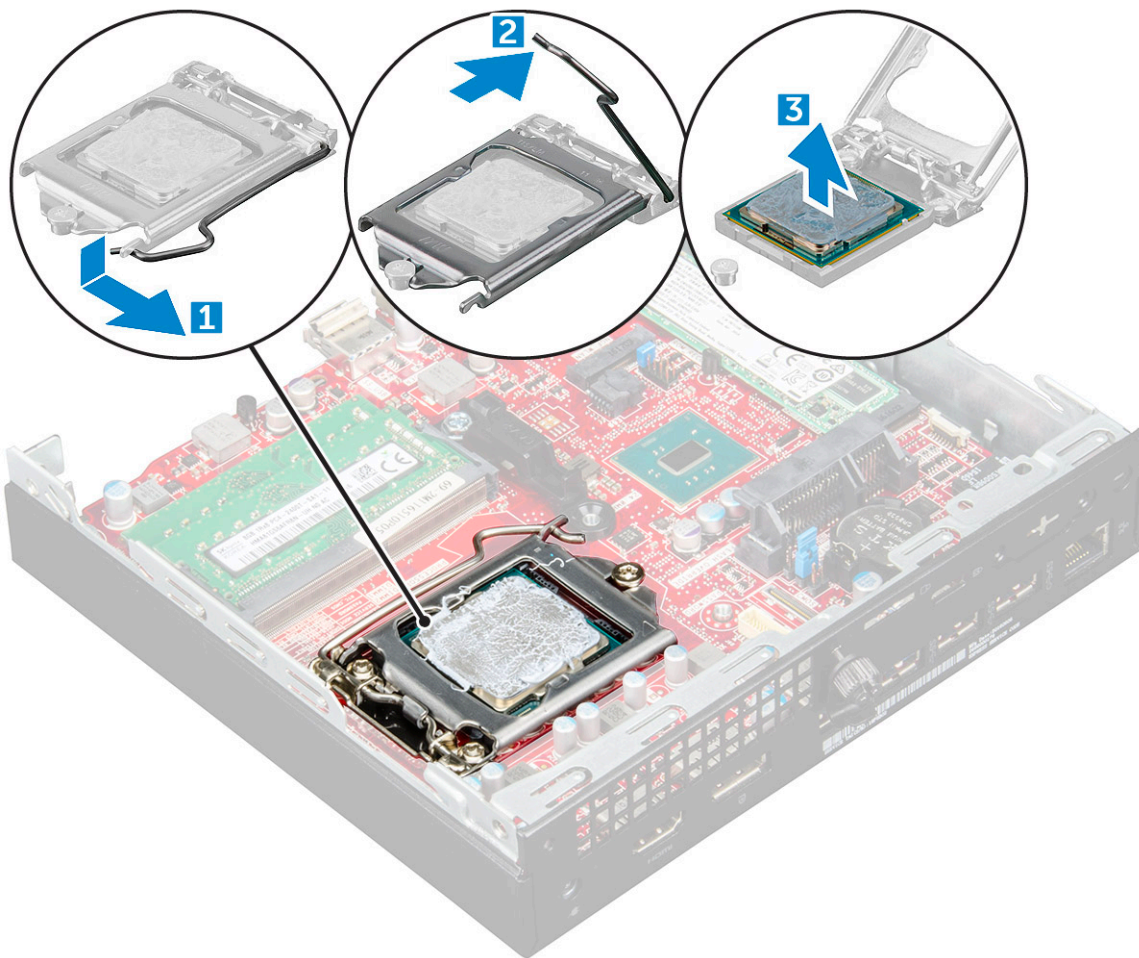
Processor

Removing processor

Steps

1. Follow the procedure in [Before Working Inside Your Computer](#).
2. Remove the:

- a. cover
 - b. 2.5-inch drive assembly
 - c. system fan
 - d. heat sink
3. To remove the processor:
- a. Release the socket lever by pushing the lever down and out from under the tab on the processor shield [1].
 - b. Lift the lever upward and lift the processor shield [2].
CAUTION: The processor socket pins are fragile and can be permanently damaged. Be careful not to bend the pins in the processor socket when removing the processor out of the socket.
 - c. Lift the processor out of the socket [3].
- NOTE:** After removing the processor, place it in an antistatic container for reuse, return, or temporary storage. Do not touch the bottom of the processor to avoid damage to the processor contacts. Touch only the side edges of the processor.



Installing processor

Steps

1. Align the processor with the socket keys.
CAUTION: Do not use force to seat the processor. When the processor is positioned correctly, it engages easily into the socket.
2. Align the pin-1 indicator of the processor with the triangle on the socket.
3. Place the processor on the socket such that the slots on the processor align with the socket keys.

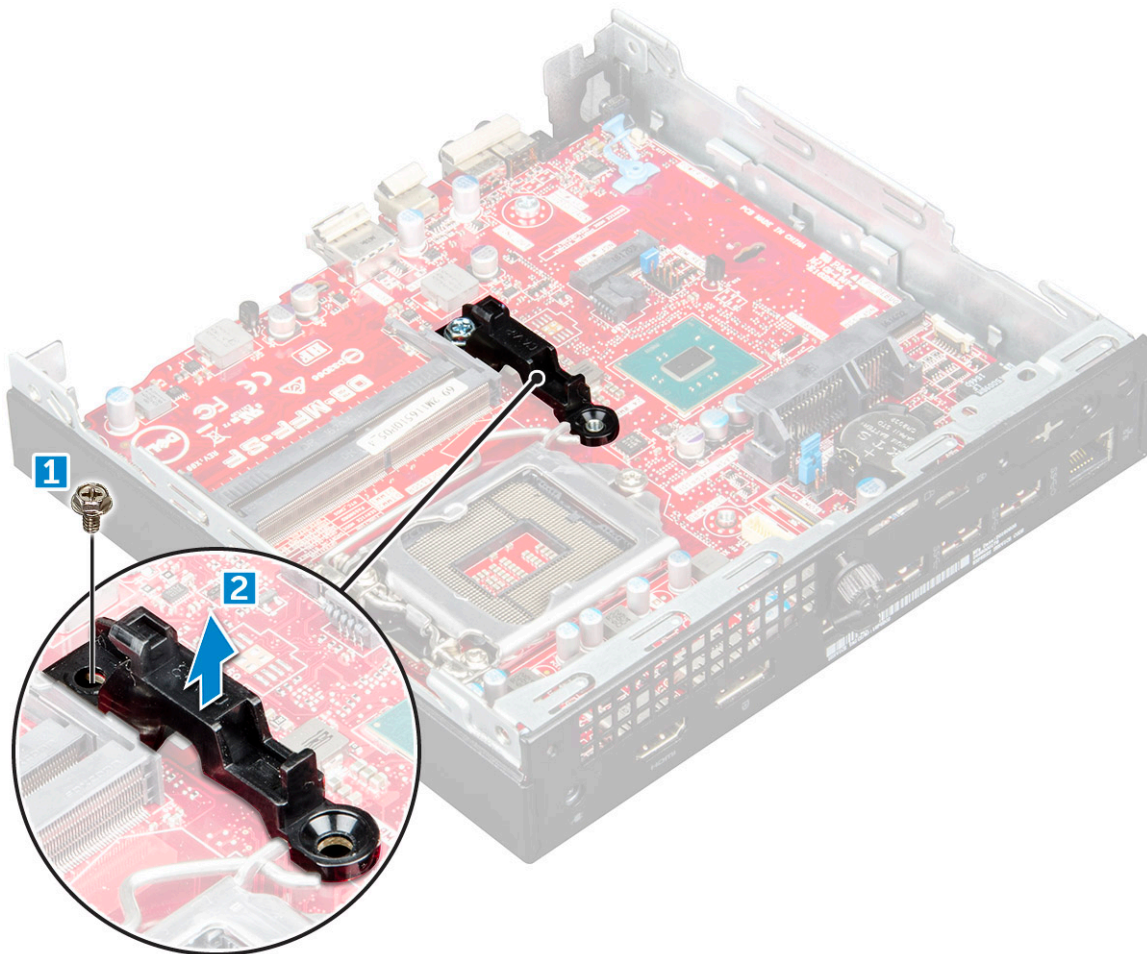
4. Close the processor shield by sliding it under the retention screw.
5. Lower the socket lever and push it under the tab to lock it.
6. Install the:
 - a. [heat sink](#)
 - b. [system fan](#)
 - c. [2.5-inch drive assembly](#)
 - d. [cover](#)
7. Follow the procedure in [After working inside your computer](#).

System board

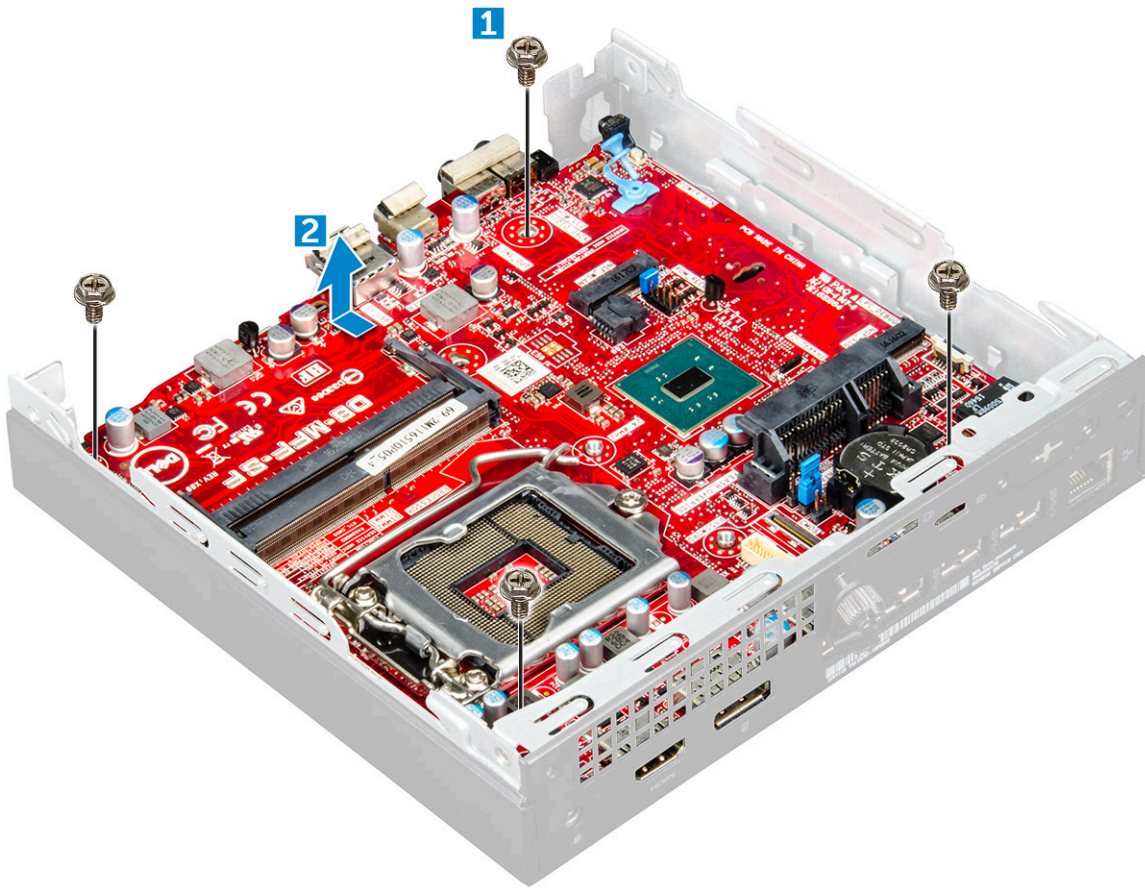
Removing system board

Steps

1. Follow the procedure in [Before working inside your computer](#).
2. Remove the:
 - a. [cover](#)
 - b. [2.5-inch drive assembly](#)
 - c. [system fan](#)
 - d. [heat sink](#)
 - e. [processor](#)
3. To remove the plastic tab:
 - a. Remove the screw that secures the plastic tab to the system board [1].
 - b. Lift the plastic tab away from the system board [2].



4. To remove the system board:
 - a. Remove the #6-32*5.4 screws that secure the system board to the computer [1].
 - b. Slide the system board to disengage the connectors from the back of the computer [2].
 - c. Lift the system board away from the computer [3].

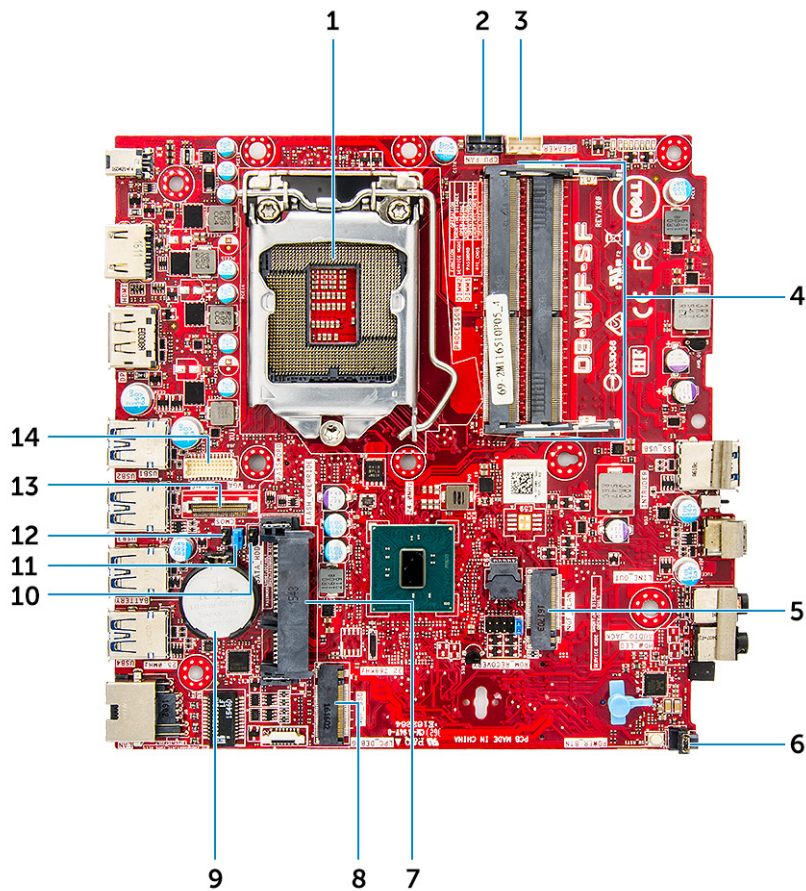


Installing system board

Steps

1. Hold the system board by its edges and angle it toward the back of the computer.
2. Lower the system board into the computer until the connectors at the back of the system board align with the slots on the chassis, and the screw holes on the system board align with the standoffs on the computer.
3. Tighten the #6-32*5.4 screws to secure the system board to the computer.
4. Place the metal tab on the system board and tighten the screw to secure the metal tab to the system board.
5. Install the:
 - a. [processor](#)
 - b. [heat sink](#)
 - c. [system fan](#)
 - d. [2.5-inch drive assembly](#)
 - e. [cover](#)
6. Follow the procedure in [After working inside your computer](#).

System board layout



- | | |
|---------------------------------|--------------------------------------|
| 1. CPU socket connector | 2. CPU fan connector |
| 3. Internal speaker connector | 4. Memory module connectors |
| 5. M.2 WLAN connector | 6. Power switch connector |
| 7. Hard drive connector | 8. M.2 SSD connector |
| 9. Coin cell battery | 10. Service Mode Jumper |
| 11. Clear password jumper | 12. Clear CMOS jumper |
| 13. DP/VGA connector (optional) | 14. PS/2 serial connector (optional) |

M.2 Intel Optane Memory Module 16 GB

Topics:

- [Overview](#)
- [Intel®Optane™ Memory Module Driver Requirements](#)
- [M.2 Intel Optane Memory Module 16 GB](#)
- [Product specifications](#)
- [Environmental Conditions](#)
- [Troubleshooting](#)

Overview

This document describes the specifications and capabilities of the Intel® Optane™ memory module. The Intel® Optane™ memory is a system acceleration solution developed for 7th Generation Intel® Core™ processor-based platforms. The Intel® Optane™ memory module is architected with the high performance controller interface Non-Volatile Memory Express (NVMe*)- delivering outstanding performance, low latency and quality of service. NVMe uses a standardized interface that enables higher performance and lower latency than previous interfaces. Intel® Optane™ memory module offers capacities of 16 GB and 32 GB in small M.2 form factors.

The Intel® Optane™ memory module offers a system acceleration solution using the latest Intel® Rapid Storage Technology (Intel® RST) 15.5X.

The Intel® Optane™ memory module includes these key features:

- PCIe 3.0x2 with NVMe interface
- Uses Intel's revolutionary new storage technology, 3D Xpoint™ memory media
- Ultra-low latency; exceptional responsiveness
- Performance saturation at queue depth of 4 and lower
- Very high endurance capabilities

Intel®Optane™ Memory Module Driver Requirements

The following table describes the driver requirements for the Intel® Optane™ memory system acceleration as a component of Intel® Rapid Storage Technology 15.5 or later and requires 7th generation Intel® Core™ processor-based platforms to function.

Table 2. Driver Support

Support Level	Operating System Description
Intel® Optane™ Memory with System Acceleration Configuration Using Rapid Storage Technology Driver ₁	Windows 10*64 bit

NOTES:

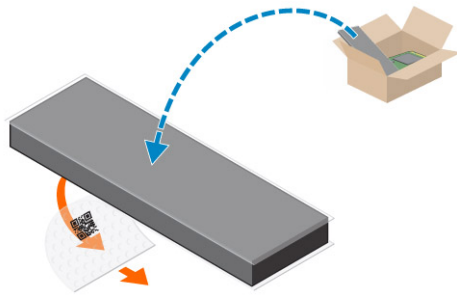
1. Intel® RST driver requires device to be attached to RST enabled PCIe lanes on 7th generation Intel® Core™.

M.2 Intel Optane Memory Module 16 GB

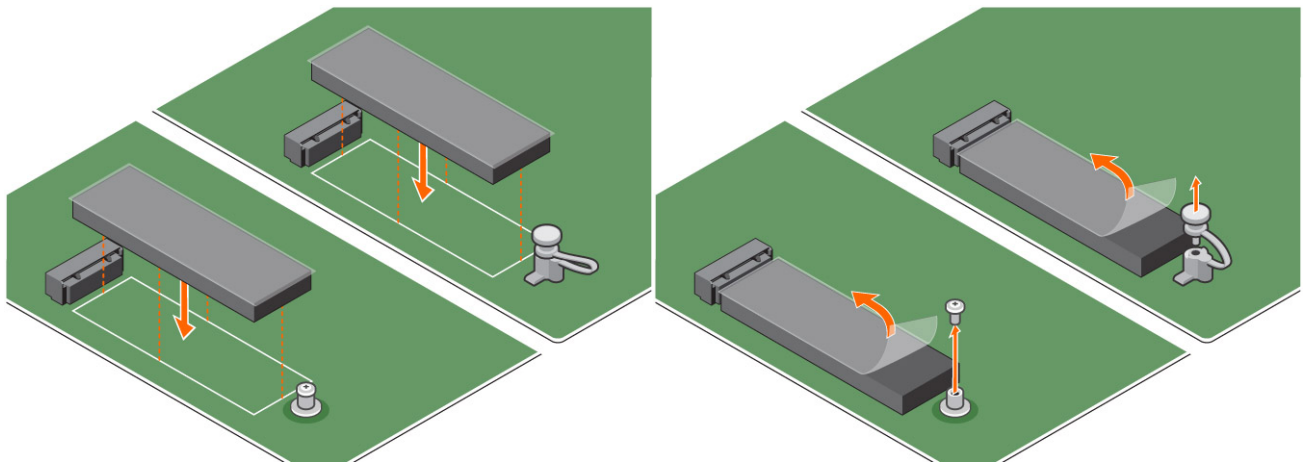
Steps

1. Follow the procedure in [Before working inside your computer](#).
2. Remove the [cover](#).

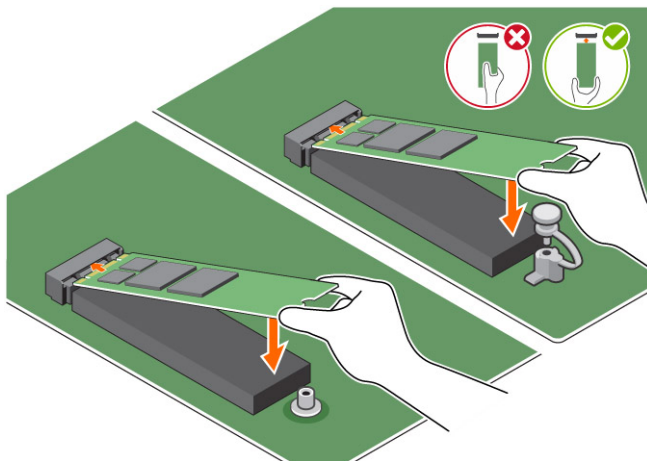
3. To remove M.2 Intel optane memory module:
- a. Remove the thermal pad and white adhesive tape from the box.



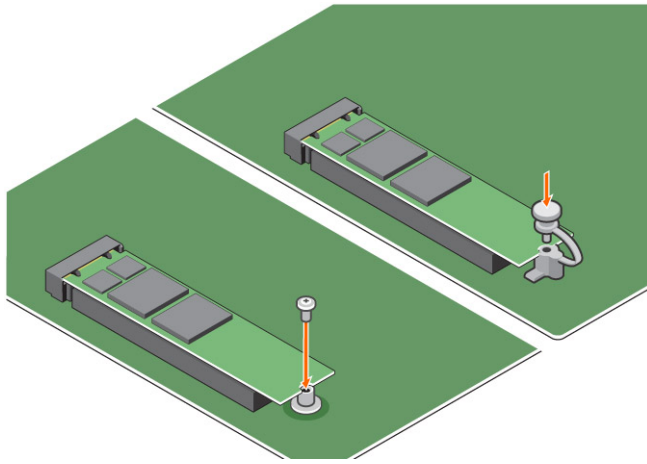
- b. Place the thermal pad on the SSD slot and remove the white adhesive tape.



- c. Place the M.2 Intel optane memory module into the slot on the thermal pad.



- d. If the system is shipped with screw tighten that secures the M.2 Intel optane memory module on the computer. If the system is shipped with self locking spacer press to lock the M.2 Intel optane to secure on the computer.



Product specifications

Table 3. Product specifications

Features	Specification
Capacities	16 GB, 32 GB
Expansion cards	PCIe 3.0 x 2
M.2 form factors (all densities)	2280–S3–B–M
Performance	<ul style="list-style-type: none"> • Seq R/W: Up to 1350/290 MS/s • QD4 4HB Random Read: 240K + IOPs • QD4 4HB Random Write: 240K + IOPs
Latency (average sequential)	<ul style="list-style-type: none"> • Read 8.25 μ • Write: 30 μ
Components	<ul style="list-style-type: none"> • Intel 3D XPoint Memory Media • Intel Controller and Firmware • PCIe 3.0x2 with NVMe Interface • Intel Rapid Storage Technology 15.2 or later
Operating System Support	Windows 10 64 bit
Supported Platforms	7th generation or newer Intel Core processor based platforms
Power	<ul style="list-style-type: none"> • 3.3V Supply Rail • Active: 3.5 W • Drive Idle :900mW to 1.2W
Compliance	<ul style="list-style-type: none"> • NVMe Express 1.1 • PCI Express Base specification rev 3.0 • PCI M.2 HS Spec
Certification and Declarations μ	UL, CE, C-Tick, BSMI, KCC, Microsoft WHQL, Microsoft WHCK, VCCI
Endurance Rating	<ul style="list-style-type: none"> • 100 GB Writes per day • Upto 182.3 TBW (Terabytes written)
Temperature Specification	<ul style="list-style-type: none"> • Operating: 0 to 70$^{\circ}$ C • Non-Operating: 10 to 85$^{\circ}$ C • Temperature monitoring
Shock	1500 G/0.5msec
Vibration	<ul style="list-style-type: none"> • Operating: 2.17 G_{RMS}(5–800Hz)

Table 3. Product specifications (continued)

Features	Specification
	<ul style="list-style-type: none"> Non-Operating: 3.13 G_{RMS} (5–800Hz)
Altitude (Simulated)	<ul style="list-style-type: none"> Operating: –1,000 ft to 10,000 ft Non-Operating: –1,000 ft to 40,000 ft
Product Ecological Compliance	RoHS
Reliability	<ul style="list-style-type: none"> Uncorrectable Bit Error Rate (UBER): 1 sector per 10¹⁵ bits read Mean Time Between Failure (MTBF): 1.6 million hours

Environmental Conditions

Table 4. Temperature, Shock, Vibration

Temperature	M.2 2280 form factor
Operating ¹	0–70° C
Non-operating ²	-10–85° C
Temperature Gradient ³	
Operating	30° C/hr (Typical)
Non-operating	30° C/hr (Typical)
Humidity	
Operating	5–95%
Non-operating	5–95%
Shock and Vibration	Range
Shock ⁴	
Operating	1500 G / 0.5 ms
Non-operating	230 G / 3 msec
Vibration ⁵	
Operating	2.17 G _{RMS} (5–800Hz) Max
Non-operating	3.13 G _{RMS} (5–800Hz) Max

NOTES:

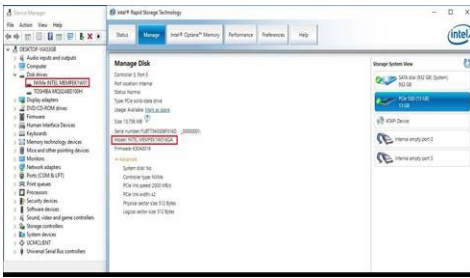
- Operating temperature is targeted for 70° C.
- Please contact your Intel representative for details on the non-operating temperature range.
- Temperature gradient measured without condensation.
- Shock specification assume the device is mounted securely with the input vibration applied to the drive-mounting screws. Stimulus may be applied in the X,Y, or Z axis and shock specification is measured using Root Mean Squared (RMS) value.
- Vibration specifications assume the device is mounted securely with the input vibration applied to the drive-mounting screws. Stimulus may be applied in the X, Y, or Z axis. Vibration specificities is measured using RMS value.

Troubleshooting

Steps

- The Intel Optane Memory model name "NVME INTEL MEMPEK1W01" in Device Manager does not match in the Intel Rapid Storage Technology user interface; it only shows a part of the serial number information. This is a known issue and does not impede the functionality of the Intel Optane Memory.

Device Manager: NVME INTEL MEMPEK1W01
 IRST UI: INTEL MEMPEK1W016GA



2. During the first-time boot up, the system will scan the pairing status as below screen shot after shutdown. It's working as designed and the message will not appear again in following boot ups.



Technology and components

Topics:

- USB features
- HDMI 1.4

USB features

Universal Serial Bus, or USB, was introduced in 1996. It dramatically simplified the connection between host computers and peripheral devices like mice, keyboards, external drivers, and printers.

Table 5. USB evolution

Type	Data Transfer Rate	Category	Introduction Year
USB 2.0	480 Mbps	High Speed	2000
USB 3.0/USB 3.1 Gen 1	5 Gbps	SuperSpeed	2010
USB 3.1 Gen 2	10 Gbps	SuperSpeed	2013

USB 3.0/USB 3.1 Gen 1 (SuperSpeed USB)

For years, the USB 2.0 has been firmly entrenched as the de facto interface standard in the PC world with about 6 billion devices sold, and yet the need for more speed grows by ever faster computing hardware and ever greater bandwidth demands. The USB 3.0/USB 3.1 Gen 1 finally has the answer to the consumers' demands with a theoretically 10 times faster than its predecessor. In a nutshell, USB 3.1 Gen 1 features are as follows:

- Higher transfer rates (up to 5 Gbps)
- Increased maximum bus power and increased device current draw to better accommodate power-hungry devices
- New power management features
- Full-duplex data transfers and support for new transfer types
- Backward USB 2.0 compatibility
- New connectors and cable

The topics below cover some of the most commonly asked questions regarding USB 3.0/USB 3.1 Gen 1.



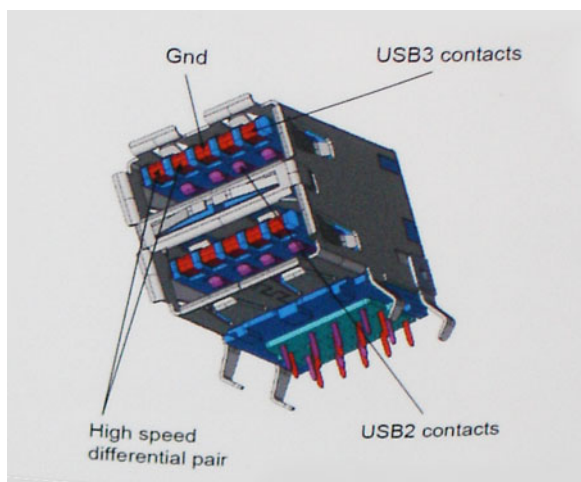
Speed

Currently, there are 3 speed modes defined by the latest USB 3.0/USB 3.1 Gen 1 specification. They are Super-Speed, Hi-Speed and Full-Speed. The new SuperSpeed mode has a transfer rate of 4.8 Gbps. While the specification retains Hi-Speed, and Full-Speed USB mode, commonly known as USB 2.0 and 1.1 respectively, the slower modes still operate at 480 Mbps and 12 Mbps respectively and are kept to maintain backward compatibility.

USB 3.0/USB 3.1 Gen 1 achieves the much higher performance by the technical changes below:

- An additional physical bus that is added in parallel with the existing USB 2.0 bus (refer to the picture below).

- USB 2.0 previously had four wires (power, ground, and a pair for differential data); USB 3.0/USB 3.1 Gen 1 adds four more for two pairs of differential signals (receive and transmit) for a combined total of eight connections in the connectors and cabling.
- USB 3.0/USB 3.1 Gen 1 utilizes the bidirectional data interface, rather than USB 2.0's half-duplex arrangement. This gives a 10-fold increase in theoretical bandwidth.



With today's ever increasing demands placed on data transfers with high-definition video content, terabyte storage devices, high megapixel count digital cameras etc., USB 2.0 may not be fast enough. Furthermore, no USB 2.0 connection could ever come close to the 480Mbps theoretical maximum throughput, making data transfer at around 320 Mbps (40 MB/s) — the actual real-world maximum. Similarly, USB 3.0/USB 3.1 Gen 1 connections will never achieve 4.8Gbps. We will likely see a real-world maximum rate of 400MB/s with overheads. At this speed, USB 3.0/USB 3.1 Gen 1 is a 10x improvement over USB 2.0.

Applications

USB 3.0/USB 3.1 Gen 1 opens up the laneways and provides more headroom for devices to deliver a better overall experience. Where USB video was barely tolerable previously (both from a maximum resolution, latency, and video compression perspective), it's easy to imagine that with 5-10 times the bandwidth available, USB video solutions should work that much better. Single-link DVI requires almost 2Gbps throughput. Where 480Mbps was limiting, 5Gbps is more than promising. With its promised 4.8Gbps speed, the standard will find its way into some products that previously weren't USB territory, like external RAID storage systems.

Listed below are some of the available SuperSpeed USB 3.0/USB 3.1 Gen 1 products:

- External Desktop USB 3.0/USB 3.1 Gen 1 Hard Drives
- Portable USB 3.0/USB 3.1 Gen 1 Hard Drives
- USB 3.0/USB 3.1 Gen 1 Drive Docks & Adapters
- USB 3.0/USB 3.1 Gen 1 Flash Drives & Readers
- USB 3.0/USB 3.1 Gen 1 Solid-state Drives
- USB 3.0/USB 3.1 Gen 1 RAIDs
- Optical Media Drives
- Multimedia Devices
- Networking
- USB 3.0/USB 3.1 Gen 1 Adapter Cards & Hubs

Compatibility

The good news is that USB 3.0/USB 3.1 Gen 1 has been carefully planned from the start to peacefully co-exist with USB 2.0. First of all, while USB 3.0/USB 3.1 Gen 1 specifies new physical connections and thus new cables to take advantage of the higher speed capability of the new protocol, the connector itself remains the same rectangular shape with the four USB 2.0 contacts in the exact same location as before. Five new connections to carry receive and transmitted data independently are present on USB 3.0/USB 3.1 Gen 1 cables and only come into contact when connected to a proper SuperSpeed USB connection.

HDMI 1.4

This topic explains the HDMI 1.4 and its features along with the advantages.

HDMI (High-Definition Multimedia Interface) is an industry-supported, uncompressed, all-digital audio/video interface. HDMI provides an interface between any compatible digital audio/video source, such as a DVD player, or A/V receiver and a compatible digital audio and/or video monitor, such as a digital TV (DTV). The intended applications for HDMI TVs, and DVD players. The primary advantage is cable reduction and content protection provisions. HDMI supports standard, enhanced, or high-definition video, plus multichannel digital audio on a single cable.

 **NOTE:** The HDMI 1.4 will provide 5.1 channel audio support.

HDMI 1.4 Features

- **HDMI Ethernet Channel** - Adds high-speed networking to an HDMI link, allowing users to take full advantage of their IP-enabled devices without a separate Ethernet cable
- **Audio Return Channel** - Allows an HDMI-connected TV with a built-in tuner to send audio data "upstream" to a surround audio system, eliminating the need for a separate audio cable
- **3D** - Defines input/output protocols for major 3D video formats, paving the way for true 3D gaming and 3D home theater applications
- **Content Type** - Real-time signaling of content types between display and source devices, enabling a TV to optimize picture settings based on content type
- **Additional Color Spaces** - Adds support for additional color models used in digital photography and computer graphics
- **4K Support** - Enables video resolutions far beyond 1080p, supporting next-generation displays that will rival the Digital Cinema systems used in many commercial movie theaters
- **HDMI Micro Connector** - A new, smaller connector for phones and other portable devices, supporting video resolutions up to 1080p
- **Automotive Connection System** - New cables and connectors for automotive video systems, designed to meet the unique demands of the motoring environment while delivering true HD quality

Advantages of HDMI

- Quality HDMI transfers uncompressed digital audio and video for the highest, crispest image quality.
- Low-cost HDMI provides the quality and functionality of a digital interface while also supporting uncompressed video formats in a simple, cost-effective manner
- Audio HDMI supports multiple audio formats from standard stereo to multichannel surround sound
- HDMI combines video and multichannel audio into a single cable, eliminating the cost, complexity, and confusion of multiple cables currently used in A/V systems
- HDMI supports communication between the video source (such as a DVD player) and the DTV, enabling new functionality

BIOS setup

CAUTION: Unless you are an expert computer user, do not change the settings in the BIOS Setup program. Certain changes can make your computer work incorrectly.

NOTE: Depending on the computer and its installed devices, the items listed in this section may or may not be displayed.

NOTE: Before you change BIOS Setup program, it is recommended that you write down the BIOS Setup program screen information for future reference.

Use the BIOS Setup program for the following purposes:

- Get information about the hardware installed in your computer, such as the amount of RAM and the size of the hard drive.
- Change the system configuration information.
- Set or change a user-selectable option, such as the user password, type of hard drive installed, and enabling or disabling base devices.

Topics:

- [BIOS overview](#)
- [Entering BIOS setup program](#)
- [Navigation keys](#)
- [One Time Boot menu](#)
- [System Setup options](#)
- [Updating the BIOS](#)
- [System and setup password](#)
- [Clearing CMOS settings](#)
- [Clearing BIOS \(System Setup\) and System passwords](#)

BIOS overview

The BIOS manages data flow between the computer's operating system and attached devices such as hard disk, video adapter, keyboard, mouse, and printer.

Entering BIOS setup program

Steps


1. Turn on your computer.
2. Press F2 immediately to enter the BIOS setup program.

NOTE: If you wait too long and the operating system logo appears, continue to wait until you see the desktop. Then, turn off your computer and try again.

Navigation keys


NOTE: For most of the System Setup options, changes that you make are recorded but do not take effect until you restart the system.

Table 6. Navigation keys


Keys	Navigation
Up arrow	Moves to the previous field.
Down arrow	Moves to the next field.
Enter	Selects a value in the selected field (if applicable) or follow the link in the field.
Spacebar	Expands or collapses a drop-down list, if applicable.
Tab	Moves to the next focus area.  NOTE: For the standard graphics browser only.
Esc	Moves to the previous page until you view the main screen. Pressing Esc in the main screen displays a message that prompts you to save any unsaved changes and restarts the system.

One Time Boot menu

To enter **One Time Boot menu**, turn on your computer, and then press F12 immediately.

 **NOTE:** It is recommended to shutdown the computer if it is on.

The one-time boot menu displays the devices that you can boot from including the diagnostic option. The boot menu options are:

- Removable Drive (if available)
- STXXXX Drive (if available)
 **NOTE:** XXX denotes the SATA drive number.
- Optical Drive (if available)
- SATA Hard Drive (if available)
- Diagnostics

The boot sequence screen also displays the option to access the System Setup screen.

System Setup options

 **NOTE:** Depending on the computer and its installed devices, the items listed in this section may or may not appear.

Table 7. General

Option	Description
System Information	<p>Displays the following information:</p> <ul style="list-style-type: none"> • System Information: Displays BIOS Version, Service Tag, Asset Tag, Ownership Tag, Ownership Date, Manufacture Date, and the Express Service Code. • Memory Information: Displays Memory Installed, Memory Available, Memory Speed, Memory Channel Mode, Memory Technology, DIMM 1 Size, and DIMM 2 Size, DIMM 3 Size, and DIMM 4 Size. • PCI Information: Displays SLOT1, SLOT2, SLOT3, SLOT4, and SLOT5_M.2 • Processor Information: Displays Processor Type, Core Count, Processor ID, Current Clock Speed, Minimum Clock Speed, Maximum Clock Speed, Processor L2 Cache, Processor L3 Cache, HT Capable, and 64-Bit Technology.

Table 7. General (continued)

Option	Description
	<ul style="list-style-type: none"> • Device Information: Displays SATA-0, SATA-1, SATA-2, SATA-3, SATA-4, M.2 PCIe SSD-0, LOM MAC Address, Video Controller, and Audio Controller. .
Boot Sequence	<p>Allows you to specify the order in which the computer attempts to find an operating system from the devices specified in this list.</p> <ul style="list-style-type: none"> • Legacy • UEFI (selected by default)
Advanced Boot Options	<p>Allows you to select the Enable Legacy Option ROMs option, when in UEFI boot mode. By default, this option is selected.</p>
Date/Time	<p>Allows you to set the date and time settings. Changes to the system date and time take effect immediately.</p>

Table 8. System Configuration


Option	Description
Integrated NIC	<p>Allows you to control the on-board LAN controller. The option 'Enable UEFI Network Stack' is not selected by default. The options are:</p> <ul style="list-style-type: none"> • Disabled • Enabled • Enabled w/PXE (default) <p> NOTE: Depending on the computer and its installed devices, the items listed in this section may or may not appear.</p>
SATA Operation	<p>Allows you to configure the operating mode of the integrated hard drive controller.</p> <ul style="list-style-type: none"> • Disabled = The SATA controllers are hidden • RAID ON = SATA is configured to support RAID mode (selected by default) • AHCI= SATA is configured for AHCI mode
Serial Port	<p>Allows you to determine how the built-in serial port to operate. The options are:</p> <ul style="list-style-type: none"> • Disabled • COM 1 – Default setting • COM 2 • COM 3 • COM 4
Drives	<p>Allows you to enable or disable the various drives on-board:</p> <ul style="list-style-type: none"> • SATA-0 • SATA-1 • SATA-2 • SATA-3 • SATA-4
Smart Reporting	<p>This field controls whether hard drive errors for integrated drives are reported during system startup. The Enable Smart Reporting option is disabled by default.</p>
USB Configuration	<p>Allows you to enable or disable the integrated USB controller for:</p> <ul style="list-style-type: none"> • Enable Boot Support • Enable Front USB Ports

Table 8. System Configuration (continued)

Option	Description
	<ul style="list-style-type: none"> • Enable Rear USB Ports All the options are enabled by default.
Front USB Configuration	Allows you to enable or disable the front USB ports. All the ports are enabled by default.
Rear USB Configuration	Allows you to enable or disable the back USB ports. All the ports are enabled by default.
USB PowerShare	This option allows you to charge the external devices, such as mobile phones, music player. This option is disabled by default.
Audio	Allows you to enable or disable the integrated audio controller. The option Enable Audio is selected by default. <ul style="list-style-type: none"> • Enable Microphone • Enable Internal Speaker Both the options are selected by default.
Miscellaneous	Allows you to enable or disable the various on-board devices. <ul style="list-style-type: none"> • Enable PCI Slot (default option) • Enable Media Card (default option) • Disable Media Card

Table 9. Video

Option	Description
Primary Display	Allows you to select the primary display when multiple controllers are available in the system. <ul style="list-style-type: none"> • Auto (default) • Intel HD Graphics ⓘ NOTE: If you do not select Auto, the on-board graphics device will be present and enabled.

Table 10. Security

Option	Description
Admin Password	Allows you to set, change, and delete the admin password.
System Password	Allows you to set, change, and delete the system password.
Internal HDD-0 Password	Allows you to set, change, and delete the computer's internal HDD.
Internal HDD-3 Password	Allows you to set, change, and delete the computer's internal HDD. ⓘ NOTE: HDD passwords are not available for PCI-e hard drives.
Strong Password	This option lets you enable or disable strong passwords for the system.
Password Configuration	Allows you to control the minimum and maximum number of characters allowed for a administrative password and the system password. The range of characters is between 4 and 32.
Password Bypass	This option lets you bypass the System (Boot) Password and the internal HDD password prompts during a system restart.

Table 10. Security (continued)

Option	Description
	<ul style="list-style-type: none"> ● Disabled — Always prompt for the system and internal HDD password when they are set. This option is selected by default. ● Reboot Bypass — Bypass the password prompts on Restarts (warm boots). <p>i NOTE: The system will always prompt for the system and internal HDD passwords when powered on from the off state (a cold boot). Also, the system will always prompt for passwords on any module bay HDDs that may be present.</p>
Password Change	<p>This option lets you determine whether changes to the System and Hard Disk passwords are permitted when an administrator password is set.</p> <p>Allow Non-Admin Password Changes - This option is enabled by default.</p>
UEFI Capsule Firmware Updates	<p>This option controls whether this system allows BIOS updates via UEFI capsule update packages. This option is selected by default. Disabling this option will block BIOS updates from services such as Microsoft Windows Update and Linux Vendor Firmware Service (LVFS)</p>
TPM 2.0 Security	<p>Allows you to control whether the Trusted Platform Module (TPM) is visible to the operating system.</p> <ul style="list-style-type: none"> ● TPM On (default) ● Clear ● PPI Bypass for Enable Commands ● PPI Bypass for Disable Commands ● Attestation Enable (default) ● Key Storage Enable(default) ● SHA-256(default) ● Disabled ● Enabled (default)
Computrace	<p>This field lets you Activate or Disable the BIOS module interface of the optional Computrace Service from Absolute Software. Enables or disables the optional Computrace service designed for asset management.</p> <ul style="list-style-type: none"> ● Deactivate - This option is selected by default. ● Disable ● Activate
Chassis Intrusion	<p>Allows you to control the chassis intrusion feature. You can set this option to:</p> <ul style="list-style-type: none"> ● Enabled ● Disabled (default) ● On-Silent
CPU XD Support	<p>Allows you to enable or disable the Execute Disable mode of the processor. This option is enabled by default.</p>
OROM Keyboard Access	<p>This option determines whether users are able to enter Option ROM Configuration screens via hotkeys during boot. Specifically, these settings are capable of preventing access to Intel RAID (CTRL+I) or Intel Management Engine BIOS Extension (CTRL+P/F12).</p> <ul style="list-style-type: none"> ● Enable (selected by default)— User may enter OROM configuration screens via the hotkey.

Table 10. Security (continued)

Option	Description
	<ul style="list-style-type: none"> ● One-Time Enable — User may enter OROM configuration screens via the hotkeys on next boot only. After next boot, the setting will revert to disabled. ● Disable — User may not enter OROM configuration screens via the hotkey.
Admin Setup Lockout	Allows you to enable or disable the option to enter Setup when an Administrative password is set. This option is not set by default.

Table 11. Secure Boot


Option	Description
Secure Boot Enable	Allows you to enable or disable Secure Boot feature <ul style="list-style-type: none"> ● Disable (selected by default) ● Enable
Expert key Management	<p>Allows you to manipulate the security key databases only if the system is in Custom Mode. The Enable Custom Mode option is disabled by default. The options are:</p> <ul style="list-style-type: none"> ● PK (default) ● KEK ● db ● dbx <p>If you enable the Custom Mode, the relevant options for PK, KEK, db, and dbx appear. The options are:</p> <ul style="list-style-type: none"> ● Save to File- Saves the key to a user-selected file ● Replace from File- Replaces the current key with a key from a user-selected file ● Append from File- Adds a key to the current database from a user-selected file ● Delete- Deletes the selected key ● Reset All Keys- Resets to default setting ● Delete All Keys- Deletes all the keys <p> NOTE: If you disable the Custom Mode, all the changes made will be erased and the keys will restore to default settings.</p>

Table 12. Intel Software Guard Extensions

Option	Description
Intel SGX Enable	Allows you to enable or disable the Intel Software Guard Extensions to provide a secured environment for running code/storing sensitive information in the context of the main operating system. <ul style="list-style-type: none"> ● Disabled (default) ● Enabled
Enclave Memory Size	Allows you to set the Intel SGX Enclave Reserve Memory Size. <ul style="list-style-type: none"> ● 32 MB ● 64 MB (Disabled by default) ● 128 MB (Disabled by default)

Table 13. Performance

Option	Description
Multi Core Support	This field specifies whether the process will have one or all cores enabled. This option is enabled by default. options: <ul style="list-style-type: none"> ● All (selected by default) ● 1 ● 2 ● 3
Intel SpeedStep	Allows you to enable or disable the Intel SpeedStep mode of the processor. This option is enabled by default.
C States Control	Allows you to enable or disable additional processor sleep states. This option is enabled by default.
Limited CPUID Value	Allows you to limit the maximum value of the processor standard CPUID function. This option is disabled by default.
Intel TurboBoost	Allows you to enable or disable the Intel TurboBoost mode of the processor. This option is enabled by default.

Table 14. Power Management


Option	Description
AC Recovery	Determines how the system responds when AC power is re-applied after a power loss. You can set the AC Recovery to: <ul style="list-style-type: none"> ● Power Off ● Power On ● Last Power State This option is Power Off by default.
Auto On Time	Sets time to automatically turn on the computer. Time is kept in standard 12-hour format (hour:minutes:seconds). Change the startup time by typing the values in the time and AM/PM fields.  NOTE: This feature does not work if you turn off your computer using the switch on a power strip or surge protector or if Auto Power is set to disabled .
Deep Sleep Control	Allows you to define the controls when Deep Sleep is enabled. <ul style="list-style-type: none"> ● Disabled ● Enabled in S5 only ● Enabled in S4 and S5 This option is Enabled in S4 and S5 by default.
Fan Control Override	Allows you to determine the speed of the system fan. When this option is enabled, the system fan runs at the maximum speed. This option is disabled by default.
USB Wake Support	Allows you to enable the USB devices to wake the computer from standby (S1 / S3), Hibernate (S4), and Power Off (S5) modes. The option "Enable USB Wake Support" is selected by default
Wake on LAN/WWAN	This option allows the computer to power up from the off state when triggered by a special LAN signal. This feature only works when the computer is connected to AC power supply. <ul style="list-style-type: none"> ● Disabled - Does not allow the system to power on by special LAN signals when it receives a wake-up signal from the LAN or wireless LAN.

Table 14. Power Management (continued)

Option	Description
	<ul style="list-style-type: none"> • LAN or WLAN - Allows the system to be powered on by special LAN or wireless LAN signals. • LAN Only - Allows the system to be powered on by special LAN signals. • LAN with PXE Boot - A wakeup packet sent to the system in either the S4 or S5 state, that will cause the system to wake-up and immediately boot to PXE. • WLAN Only - Allows the system to be powered on by special WLAN signals. <p>This option is Disabled by default.</p>
Block Sleep	Allows you to block entering to sleep (S3 state) in OS environment. This option is disabled by default.
Intel Ready Mode	Allows you to enable the capability of Intel Ready Mode Technology. This option is disabled by default.

Table 15. POST Behavior

Option	Description
Numlock LED	Allows you to enable or disable the Numlock feature when your computer starts. This option is enabled by default.
Keyboard Errors	Allows you to enable or disable the keyboard error reporting when the computer starts. This option is disabled by default.
Fast Boot	<p>This option can speed up the boot process by bypassing some compatibility steps:</p> <ul style="list-style-type: none"> • Minimal — The system boots quickly, unless the BIOS has been updated, memory changed, or the previous POST did not complete. • Thorough — The system does not skip any steps in the boot process. • Auto — This allows the operating system to control this setting (this works only when the operating system supports Simple Boot Flag). <p>This option is set to Minimal by default.</p>

Table 16. Manageability

Option	Description
USB provision	This option is not selected by default.
MEBx Hotkey	This option is selected by default.

Table 17. Virtualization Support

Option	Description
Virtualization	This option specifies whether a Virtual Machine Monitor (VMM) can utilize the additional hardware capabilities provided by Intel® Virtualization Technology. Enable Intel Virtualization Technology - This option is enabled by default.
VT for Direct I/O	Enables or disables the Virtual Machine Monitor (VMM) from utilizing the additional hardware capabilities provided by Intel® Virtualization technology for direct I/O. Enable VT for Direct I/O - This option is enabled by default.

Table 18. Maintenance

Option	Description
Service Tag	Displays the Service Tag of your computer.
Asset Tag	Allows you to create a system asset tag if an asset tag is not already set. This option is set by default.
SERR Messages	Controls the SERR message mechanism. This option is set by default. Some graphics cards require that the SERR message mechanism be disabled.
BIOS Downgrade	Allows you to control flashing of the system firmware to the previous versions. This option is enabled by default. NOTE: If this option is not selected, the flashing of the system firmware to the previous versions is blocked.
Data Wipe	Allows you to securely erase the data from all the available internal storages, such as HDD, SSD, mSATA, and eMMC. The option Wipe on Next Boot is disabled by default.
BIOS recovery	Allows you to recover the corrupted BIOS conditions from the recovery files on the primary hard drive. The option BIOS Recovery from Hard Drive is selected by default

Table 19. System Logs

Option	Description
BIOS Events	Displays the system event log and allows you to: <ul style="list-style-type: none">• Clear Log• Mark all Entries

Table 20. Advanced configurations

Option	Description
ASPM	Allows you to activate the state power management. <ul style="list-style-type: none">• Auto (Default)• Disabled• L1 Only

Updating the BIOS

Updating the BIOS in Windows

About this task

CAUTION: If BitLocker is not suspended before updating the BIOS, the next time you reboot the system it will not recognize the BitLocker key. You will then be prompted to enter the recovery key to progress and the system will ask for this on each reboot. If the recovery key is not known this can result in data loss or an unnecessary operating system re-install. For more information on this subject, search in the Knowledge Base Resource at www.dell.com/support.

Steps

1. Go to www.dell.com/support.
2. Click **Product support**. In the **Search support** box, enter the Service Tag of your computer, and then click **Search**.

NOTE: If you do not have the Service Tag, use the SupportAssist feature to automatically identify your computer. You can also use the product ID or manually browse for your computer model.

3. Click **Drivers & Downloads**. Expand **Find drivers**.
4. Select the operating system installed on your computer.
5. In the **Category** drop-down list, select **BIOS**.
6. Select the latest version of BIOS, and click **Download** to download the BIOS file for your computer.
7. After the download is complete, browse the folder where you saved the BIOS update file.
8. Double-click the BIOS update file icon and follow the on-screen instructions.


For more information, search in the Knowledge Base Resource at www.dell.com/support.

Updating the BIOS in Linux and Ubuntu

To update the system BIOS on a computer that is installed with Linux or Ubuntu, see the knowledge base article [000131486](https://www.dell.com/support) at www.dell.com/support.

Updating the BIOS using the USB drive in Windows

About this task

 **CAUTION:** If BitLocker is not suspended before updating the BIOS, the next time you reboot the system it will not recognize the BitLocker key. You will then be prompted to enter the recovery key to progress and the system will ask for this on each reboot. If the recovery key is not known this can result in data loss or an unnecessary operating system re-install. For more information on this subject, search in the Knowledge Base Resource at www.dell.com/support.


Steps

1. Follow the procedure from step 1 to step 6 in [Updating the BIOS in Windows](#) to download the latest BIOS setup program file.
2. Create a bootable USB drive. For more information, search in the Knowledge Base Resource at www.dell.com/support.
3. Copy the BIOS setup program file to the bootable USB drive.
4. Connect the bootable USB drive to the computer that needs the BIOS update.
5. Restart the computer and press **F12**.
6. Select the USB drive from the **One Time Boot Menu**.
7. Type the BIOS setup program filename and press **Enter**.
The **BIOS Update Utility** appears.
8. Follow the on-screen instructions to complete the BIOS update.

Updating the BIOS from the F12 One-Time boot menu

Update your computer BIOS using the BIOS update.exe file that is copied to a FAT32 USB drive and booting from the F12 One-Time boot menu.


About this task

 **CAUTION:** If BitLocker is not suspended before updating the BIOS, the next time you reboot the system it will not recognize the BitLocker key. You will then be prompted to enter the recovery key to progress and the system will ask for this on each reboot. If the recovery key is not known this can result in data loss or an unnecessary operating system re-install. For more information on this subject, search in the Knowledge Base Resource at www.dell.com/support.

BIOS Update

You can run the BIOS update file from Windows using a bootable USB drive or you can also update the BIOS from the F12 One-Time boot menu on the computer.

Most of the Dell computers built after 2012 have this capability, and you can confirm by booting your computer to the F12 One-Time Boot Menu to see if BIOS FLASH UPDATE is listed as a boot option for your computer. If the option is listed, then the BIOS supports this BIOS update option.


 **NOTE:** Only computers with BIOS Flash Update option in the F12 One-Time boot menu can use this function.

Updating from the One-Time boot menu

To update your BIOS from the F12 One-Time boot menu, you need the following:

- USB drive formatted to the FAT32 file system (key does not have to be bootable)
- BIOS executable file that you downloaded from the Dell Support website and copied to the root of the USB drive
- AC power adapter that is connected to the computer
- Functional computer battery to flash the BIOS

Perform the following steps to perform the BIOS update flash process from the F12 menu:

 **CAUTION:** Do not turn off the computer during the BIOS update process. The computer may not boot if you turn off your computer.

Steps

1. From a turn off state, insert the USB drive where you copied the flash into a USB port of the computer.
2. Turn on the computer and press F12 to access the One-Time Boot Menu, select BIOS Update using the mouse or arrow keys then press Enter.
The flash BIOS menu is displayed.
3. Click **Flash from file**.
4. Select external USB device.
5. Select the file and double-click the flash target file, and then click **Submit**.
6. Click **Update BIOS**. The computer restarts to flash the BIOS.
7. The computer will restart after the BIOS update is completed.

System and setup password


Table 21. System and setup password

Password type	Description
System password	Password that you must enter to log in to your system.
Setup password	Password that you must enter to access and make changes to the BIOS settings of your computer.

You can create a system password and a setup password to secure your computer.

 **CAUTION:** The password features provide a basic level of security for the data on your computer.

 **CAUTION:** Anyone can access the data that is stored on your computer if it is not locked and left unattended.

 **NOTE:** System and setup password feature is disabled.

Assigning a system setup password

Prerequisites

You can assign a new **System or Admin Password** only when the status is in **Not Set**.

About this task

To enter the system setup, press F12 immediately after a power-on or reboot.

Steps

1. In the **System BIOS** or **System Setup** screen, select **Security** and press Enter.
The **Security** screen is displayed.

2. Select **System/Admin Password** and create a password in the **Enter the new password** field.
Use the following guidelines to assign the system password:
 - A password can have up to 32 characters.
 - At least one special character: ! " # \$ % & ' () * + , - . / : ; < = > ? @ [\] ^ _ ` { | }
 - Numbers 0 through 9.
 - Upper case letters from A to Z.
 - Lower case letters from a to z.
3. Type the system password that you entered earlier in the **Confirm new password** field and click **OK**.
4. Press Esc and save the changes as prompted by the pop-up message.
5. Press Y to save the changes.
The computer restarts.

Deleting or changing an existing system setup password


Prerequisites

Ensure that the **Password Status** is Unlocked (in the System Setup) before attempting to delete or change the existing System and/or Setup password. You cannot delete or change an existing System or Setup password, if the **Password Status** is Locked.

About this task

To enter the System Setup, press F12 immediately after a power-on or reboot.

Steps

1. In the **System BIOS** or **System Setup** screen, select **System Security** and press Enter.
The **System Security** screen is displayed.
2. In the **System Security** screen, verify that **Password Status** is **Unlocked**.
3. Select **System Password**, update, or delete the existing system password, and press Enter or Tab.
4. Select **Setup Password**, update, or delete the existing setup password, and press Enter or Tab.
 **NOTE:** If you change the System and/or Setup password, reenter the new password when prompted. If you delete the System and/or Setup password, confirm the deletion when prompted.
5. Press Esc and a message prompts you to save the changes.
6. Press Y to save the changes and exit from System Setup.
The computer restarts.

Clearing CMOS settings

About this task

 **CAUTION:** Clearing CMOS settings will reset the BIOS settings on your computer.


Steps

1. Remove the [side cover](#).
2. Disconnect the battery cable from the system board.
3. Remove the [coin-cell battery](#).
4. Wait for one minute.
5. Replace the [coin-cell battery](#).
6. Connect the battery cable to the system board.
7. Replace the [side cover](#).

Clearing BIOS (System Setup) and System passwords

About this task

To clear the system or BIOS passwords, contact Dell technical support as described at www.dell.com/contactdell.

 **NOTE:** For information on how to reset Windows or application passwords, refer to the documentation accompanying Windows or your application.

Software


Topics:

- Supported operating systems
- Downloading drivers
- Downloading the chipset driver
- Intel chipset drivers
- Intel HD Graphics drivers

Supported operating systems


The following list shows supported operating systems:

Table 22. Supported operating system

Supported operating systems	Operating System Description
Microsoft Windows	<ul style="list-style-type: none"> • Microsoft Windows 10 Home (64-bit) • Microsoft Windows 10 (64-bit) Professional • Microsoft Windows 7 (32/64 bit) Professional <p> NOTE: Microsoft Windows 7 is not supported with the Intel 7th Generation processors.</p>
Other	<ul style="list-style-type: none"> • Ubuntu 16.04 LTS • Neokylin V6.0
OS Media Support	<ul style="list-style-type: none"> • Optional USB optical drive

Downloading drivers


Steps

1. Turn on the computer.
2. Go to **Dell.com/support**.
3. Click **Product Support**, enter the Service Tag of your computer, and then click **Submit**.
 **NOTE:** If you do not have the Service Tag, use the auto detect feature or manually browse for your computer model.
4. Click **Drivers and Downloads**.
5. Select the operating system installed on your computer.
6. Scroll down the page and select the driver to install.
7. Click **Download File** to download the driver for your computer.
8. Navigate to the folder where you saved the driver file, after the download is complete.
9. Double-click the driver file icon and follow the instructions on the screen.

Downloading the chipset driver

Steps

1. Turn on the computer.

2. Go to **Dell.com/support**.
3. Click **Product Support**, enter the Service Tag of your computer, and then click **Submit**.
 -  **NOTE:** If you do not have the Service Tag, use the autodetect feature or manually browse for your computer model.
4. Click **Drivers and Downloads**.
5. Select the operating system installed in your computer.
6. Scroll down the page, expand **Chipset**, and select your chipset driver.
7. Click **Download File** to download the latest version of the chipset driver for your computer.
8. After the download is complete, navigate to the folder where you saved the driver file.
9. Double-click the chipset driver file icon and follow the instructions on the screen.

Intel chipset drivers

Verify if the Intel chipset drivers are already installed in the computer.

 **NOTE:** Click **Start > Control Panel > Device Manager**

or

In Search the web and Windows, type **Device Manager**

Table 23. Intel chipset drivers

Before installation	After installation
<ul style="list-style-type: none"> Other devices <ul style="list-style-type: none"> PCI Data Acquisition and Signal Processing Controller PCI Device PCI Memory Controller PCI Simple Communications Controller SM Bus Controller Unknown device System devices <ul style="list-style-type: none"> ACPI Fan ACPI Fan ACPI Fan ACPI Fan ACPI Fan ACPI Fixed Feature Button ACPI Power Button ACPI Processor Aggregator ACPI Thermal Zone ACPI Thermal Zone Composite Bus Enumerator High Definition Audio Controller High precision event timer Intel(R) Power Engine Plug-in Legacy device Microsoft ACPI-Compliant Embedded Controller Microsoft ACPI-Compliant System Microsoft System Management BIOS Driver Microsoft UEFI-Compliant System Microsoft Virtual Drive Enumerator Microsoft Windows Management Interface for ACPI Microsoft Windows Management Interface for ACPI NDIS Virtual Network Adapter Enumerator Numeric data processor PCI Express Root Complex PCI Express Root Port PCI Express Root Port PCI Express Root Port PCI Express Root Port PCI standard host CPU bridge PCI standard ISA bridge Plug and Play Software Device Enumerator Programmable interrupt controller Remote Desktop Device Redirector Bus System CMOS/real time clock System timer UMBus Root Bus Enumerator 	<ul style="list-style-type: none"> System devices <ul style="list-style-type: none"> ACPI Fan ACPI Fan ACPI Fan ACPI Fan ACPI Fan ACPI Fixed Feature Button ACPI Power Button ACPI Processor Aggregator ACPI Thermal Zone ACPI Thermal Zone Composite Bus Enumerator High Definition Audio Controller High precision event timer Intel(R) 100 Series/C230 Series Chipset Family LPC Controller - A143 Intel(R) 100 Series/C230 Series Chipset Family PCI Express Root Port #7 - A116 Intel(R) 100 Series/C230 Series Chipset Family PCI Express Root Port #6 - A115 Intel(R) 100 Series/C230 Series Chipset Family PCI Express Root Port #5 - A114 Intel(R) 100 Series/C230 Series Chipset Family PMC - A121 Intel(R) 100 Series/C230 Series Chipset Family SMBus - A123 Intel(R) 100 Series/C230 Series Chipset Family Thermal subsystem - A131

Intel HD Graphics drivers








Verify if the Intel HD Graphics drivers are already installed in the computer.

 **NOTE:** Click **Start > Control Panel > Device Manager**.

or

Tap Search the web and Windows and type **Device Manager**

Table 24. Intel HD Graphics drivers

Before installation	After installation
<ul style="list-style-type: none">▼  Display adapters<ul style="list-style-type: none"> Microsoft Basic Display Adapter ▼  Sound, video and game controllers<ul style="list-style-type: none"> High Definition Audio Device High Definition Audio Device	<ul style="list-style-type: none">▼  Display adapters<ul style="list-style-type: none"> Intel(R) HD Graphics 530

Troubleshooting your computer

You can troubleshoot your computer using indicators like diagnostic lights, beep codes, and error messages during the operation of the computer.

Topics:

- [Power-Supply Unit Built-in Self-Test](#)
- [Dell SupportAssist Pre-boot System Performance Check diagnostics](#)
- [Diagnostic and Power LED codes](#)
- [Power LED issue](#)
- [Diagnostic error messages](#)
- [Verifying system memory](#)
- [System error messages](#)
- [Recovering the operating system](#)
- [Real-Time Clock \(RTC Reset\)](#)
- [Backup media and recovery options](#)
- [Wi-Fi power cycle](#)

Power-Supply Unit Built-in Self-Test


Built-in Self-Test (BIST) helps determine if the power-supply unit is working. To run self-test diagnostics on the power-supply unit of a desktop or all-in-one computer, search in the Knowledge Base Resource at www.dell.com/support.

Dell SupportAssist Pre-boot System Performance Check diagnostics

About this task

SupportAssist diagnostics (also known as system diagnostics) performs a complete check of your hardware. The Dell SupportAssist Pre-boot System Performance Check diagnostics is embedded with the BIOS and is launched by the BIOS internally. The embedded system diagnostics provides a set of options for particular devices or device groups allowing you to:

- Run tests automatically or in an interactive mode
- Repeat tests
- Display or save test results
- Run thorough tests to introduce additional test options to provide extra information about the failed device(s)
- View status messages that inform you if tests are completed successfully
- View error messages that inform you of problems encountered during testing

 **NOTE:** Some tests for specific devices require user interaction. Always ensure that you are present at the computer terminal when the diagnostic tests are performed.

For more information, see <https://www.dell.com/support/kbdoc/000180971>.

Running the SupportAssist Pre-Boot System Performance Check

Steps

1. Turn on your computer.
2. As the computer boots, press the F12 key as the Dell logo appears.
3. On the boot menu screen, select the **Diagnostics** option.

4. Click the arrow at the bottom left corner.
Diagnostics front page is displayed.
5. Click the arrow in the lower-right corner to go to the page listing.
The items detected are listed.
6. To run a diagnostic test on a specific device, press Esc and click **Yes** to stop the diagnostic test.
7. Select the device from the left pane and click **Run Tests**.
8. If there are any issues, error codes are displayed.
Note the error code and validation number and contact Dell.

Diagnostic and Power LED codes

Table 25. Power LED states

Power LED light status	Possible cause	Troubleshooting steps
Off	The computer is either turned off or is not receiving power or in Hibernation mode.	<ul style="list-style-type: none"> ● Re-seat the power cable in the power connector on the back of the computer and the electrical outlet. ● If the computer is plugged into a power strip, ensure that the power strip is plugged into an electrical outlet and is turned on. Also, bypass power protection devices, power strips, and power extension cables to verify that the computer turns on properly. ● Ensure the electrical outlet is working by testing it with another device, such as a lamp.
Solid amber / blinking amber	<p>The second state of the LED at power up, indicates that the POWER_GOOD signal is active and it is probable that the power supply is fine.</p> <p>Initial State of LED at power up. Refer to the table below for Blinking Amber pattern diagnostic suggestions and possible failures.</p>	<ul style="list-style-type: none"> ● Remove and reinstall any cards. ● Remove and reinstall the graphics card, if applicable. ● Ensure the power cable is connected to the system board and processor.
Blinking white light	System is in a low power state, either S1 or S3. This does not indicate a fault condition.	<ul style="list-style-type: none"> ● Press the power button to bring the computer out of the sleep mode. ● Ensure all power cables are securely connected to the system board. ● Ensure the main power cable and front panel cable are connected to the system board.
Steady white	The computer is fully functional and in the On state.	<p>If the computer is not responding, do the following:</p> <ul style="list-style-type: none"> ● Ensure the display is connected and turned on.

Table 25. Power LED states (continued)

Power LED light status	Possible cause	Troubleshooting steps
		<ul style="list-style-type: none"> If the display is connected and turned on, listen for a beep code.

i **NOTE:** Amber LED blinking pattern : The pattern is 2 or 3 blinks followed by a short pause then X number of blinks up to 7. The repeated pattern has a long pause inserted in the middle. Example 2,3 = 2 amber blinks, short pause, 3 amber blinks followed by long pause then repeats.

Table 26. Diagnostic power LED codes

State	State Name	Blinking Amber Pattern	Problem Description	Suggested Resolution
-	-	2 blinks > short pause > 1 blink > long pause > repeats	Bad Motherboard	Replace the motherboard
-	-	2 blinks > short pause > 2 blinks > long pause > repeats	Bad Motherboard, Power Supply or Power Supply cabling	If customer can assist to troubleshoot, narrow down the issue with PSU BIST Test, reseal cable. If nothing works, replace the motherboard, power supply or cabling
-	-	2 blinks > short pause > 3 blinks > long pause > repeats	Bad Motherboard, Memory or Processor	If customer can assist to troubleshoot, narrow down the issue by reseating memory and swapping an available known good memory. If nothing works, replace the motherboard, memory or processor
-	-	2 blinks > short pause > 4 blinks > long pause > repeats	Bad coin cell battery	If customer can assist to troubleshoot, narrow down the issue by swapping a known good coin cell battery if available. If nothing works, replace the coin cell battery
S1	RCM	2 blinks > short pause > 5 blinks > long pause > repeats	BIOS Checksum Failure	System is in Recovery Mode. Flash latest BIOS version. If problem persists, replace the motherboard
S2	CPU	2 blinks > short pause >	Bad Processor	CPU configuration activity is in progress or a CPU failure was

Table 26. Diagnostic power LED codes (continued)


State	State Name	Blinking Amber Pattern	Problem Description	Suggested Resolution
		6 blinks > long pause > repeats		detected. Replace the processor
S3	MEM	2 blinks > short pause > 7 blinks > long pause > repeats	Memory failures	Memory subsystem configuration activity is in progress. Appropriate memory modules were detected but a memory failure has occurred. If customer can assist to troubleshoot, narrow down the issue with reseating memory and swapping a known good memory if available. If nothing works, replace the memory.
S4	PCI	3 blinks > short pause > 1 blinks > long pause > repeats	PCIe Device or Video subsystem failures	PCIe device configuration activity is in progress or PCIe device failure was detected. If customer can assist to troubleshoot, narrow down the issue by reseating PCIe card and removing one by one to determine which card failed. If identified the PCIe card failed, replace the PCIe Card. If none of the PCIe Cards failed, replace the motherboard.
S5	VID	3 blinks > short pause > 2 blinks > long pause > repeats	Video Subsystem failure	Video subsystem configuration activity in progress or video subsystem failure. If customer can assist to troubleshoot, narrow down the issue by removing one by one to determine which card failed. If identified the card failed, replace the card. If none of the card failed, replace the motherboard.
S6	STO	3 blinks > short pause >	No Memory detected	If customer can assist to troubleshoot, narrow

Table 26. Diagnostic power LED codes (continued)

State	State Name	Blinking Amber Pattern	Problem Description	Suggested Resolution
		3 blinks > long pause > repeats		<p>down the issue by removing one by one memory to determine which one failed and swapping to a known good memory if available to confirm.</p> <p>If identified the memory failed, replace the memory.</p> <p>If none of the memory failed, replace the motherboard.</p>
S7	USB	3 blinks > short pause > 4 blinks > long pause > repeats	Storage Subsystem failure	<p>Possible storage device configuration in progress or storage subsystem failure.</p> <p>If customer can assist to troubleshoot, narrow down the issue by removing one by one storages on motherboard to determine which one failed.</p> <p>If identified the storage failed, replace the storage.</p> <p>If identified the storage failed, replace the storage.</p>
S8	MEM	3 blinks > short pause > 5 blinks > long pause > repeats	Memory configuration or incompatible error	<p>Memory subsystem configuration activity is in progress. No memory modules were detected.</p> <p>If customer can assist to troubleshoot, narrow down the issue by removing one by one the memory on motherboard to determine which one failed. Also, combining the configuration to validate appropriate combination.</p> <p>If identified the component failed, replace the component.</p> <p>If none of the component failed, replace the motherboard.</p>

Table 26. Diagnostic power LED codes (continued)

State	State Name	Blinking Amber Pattern	Problem Description	Suggested Resolution
S9	MBF	3 blinks > short pause > 6 blinks > long pause > repeats	System board failure	Fatal system board failure detected. If customer can assist to troubleshoot, narrow down the issue by removing one by one the component on motherboard to determine which one failed. If identified any of the component failed, replace the component. If none of the component failed, replace the motherboard.
S10	MEM	3 blinks > short pause > 7 blinks > long pause > repeats	Possible memory failure	Memory subsystem configuration activity is in progress. Memory modules have been detected but appear to be incompatible or in an invalid configuration. If customer can assist to troubleshoot, narrow down the issue by removing one by one the memory on motherboard to determine which one failed. If identified the memory failed, replace the memory. If else, replace the motherboard.

 **WARNING:** The power LED only serve as an indicator of the progress through the POST process. These LEDs do not indicate the problem that caused the POST routine to stop

Power LED issue

Power LED is not flashing amber on ChengMing 3977 and Optiplex D8 and OptiPlex D8 AIO platforms.

ChengMing 3977 and OptiPlex D8 and D8 AIO platforms without processor installed or when processor power cable is not connected; it may not have the power LED flashing amber as the diagnostic indicator. The BIOS behavior specification defines that:

1. If no processor is installed in the system, the power LED should flash amber in pattern of 2-3
2. If no processor cable is connected in the system, the power LED should flash amber in pattern of 2-2

Do not replace any hardware, it works as per the design. With the Boot guard (BtG) feature of Intel ME11.6, when processor power or processor is missing, then the system will shut down.

Affected Platforms:

- ChengMing 3977
- OptiPlex 3050/5050/7050
- OptiPlex 3050 AIO/5250 AIO/7450 AIO

Diagnostic error messages

Table 27. Diagnostic error messages

Error messages	Description
AUXILIARY DEVICE FAILURE	The touchpad or external mouse may be faulty. For an external mouse, check the cable connection. Enable the Pointing Device option in the System Setup program.
BAD COMMAND OR FILE NAME	Ensure that you have spelled the command correctly, put spaces in the proper place, and used the correct path name.
CACHE DISABLED DUE TO FAILURE	The primary cache internal to the microprocessor has failed. Contact Dell
CD DRIVE CONTROLLER FAILURE	The optical drive does not respond to commands from the computer.
DATA ERROR	The hard drive cannot read the data.
DECREASING AVAILABLE MEMORY	One or more memory modules may be faulty or improperly seated. Reinstall the memory modules or, if necessary, replace them.
DISK C: FAILED INITIALIZATION	The hard drive failed initialization. Run the hard drive tests in Dell Diagnostics .
DRIVE NOT READY	The operation requires a hard drive in the bay before it can continue. Install a hard drive in the hard drive bay.
ERROR READING PCMCIA CARD	The computer cannot identify the ExpressCard. Reinsert the card or try another card.
EXTENDED MEMORY SIZE HAS CHANGED	The amount of memory recorded in non-volatile memory (NVRAM) does not match the memory module installed in the computer. Restart the computer. If the error appears again, Contact Dell
THE FILE BEING COPIED IS TOO LARGE FOR THE DESTINATION DRIVE	The file that you are trying to copy is too large to fit on the disk, or the disk is full. Try copying the file to a different disk or use a larger capacity disk.
A FILENAME CANNOT CONTAIN ANY OF THE FOLLOWING CHARACTERS: \ / : * ? " < > -	Do not use these characters in filenames.
GATE A20 FAILURE	A memory module may be loose. Reinstall the memory module or, if necessary, replace it.
GENERAL FAILURE	The operating system is unable to carry out the command. The message is usually followed by specific information. For example, <code>Printer out of paper</code> . Take the appropriate action.
HARD-DISK DRIVE CONFIGURATION ERROR	The computer cannot identify the drive type. Shut down the computer, remove the hard drive, and boot the computer from an optical drive. Then, shut down the computer, reinstall the hard drive, and restart the computer. Run the Hard Disk Drive tests in Dell Diagnostics .
HARD-DISK DRIVE CONTROLLER FAILURE 0	The hard drive does not respond to commands from the computer. Shut down the computer, remove the hard drive, and boot the computer from an optical drive. Then, shut down the computer, reinstall the hard drive, and restart the

Table 27. Diagnostic error messages (continued)


Error messages	Description
	computer. If the problem persists, try another drive. Run the Hard Disk Drive tests in Dell Diagnostics .
HARD-DISK DRIVE FAILURE	The hard drive does not respond to commands from the computer. Shut down the computer, remove the hard drive, and boot the computer from an optical drive. Then, shut down the computer, reinstall the hard drive, and restart the computer. If the problem persists, try another drive. Run the Hard Disk Drive tests in Dell Diagnostics .
HARD-DISK DRIVE READ FAILURE	The hard drive may be defective. Shut down the computer, remove the hard drive, and boot the computer from an optical. Then, shut down the computer, reinstall the hard drive, and restart the computer. If the problem persists, try another drive. Run the Hard Disk Drive tests in Dell Diagnostics .
INSERT BOOTABLE MEDIA	The operating system is trying to boot to non-bootable media, such as an optical drive. Insert bootable media.
INVALID CONFIGURATION INFORMATION-PLEASE RUN SYSTEM SETUP PROGRAM	The system configuration information does not match the hardware configuration. The message is most likely to occur after a memory module is installed. Correct the appropriate options in the system setup program.
KEYBOARD CLOCK LINE FAILURE	For external keyboards, check the cable connection. Run the Keyboard Controller test in Dell Diagnostics .
KEYBOARD CONTROLLER FAILURE	For external keyboards, check the cable connection. Restart the computer, and avoid touching the keyboard or the mouse during the boot routine. Run the Keyboard Controller test in Dell Diagnostics .
KEYBOARD DATA LINE FAILURE	For external keyboards, check the cable connection. Run the Keyboard Controller test in Dell Diagnostics .
KEYBOARD STUCK KEY FAILURE	For external keyboards or keypads, check the cable connection. Restart the computer, and avoid touching the keyboard or keys during the boot routine. Run the Stuck Key test in Dell Diagnostics .
LICENSED CONTENT IS NOT ACCESSIBLE IN MEDIADIRECT	Dell MediaDirect cannot verify the Digital Rights Management (DRM) restrictions on the file, so the file cannot be played.
MEMORY ADDRESS LINE FAILURE AT ADDRESS, READ VALUE EXPECTING VALUE	A memory module may be faulty or improperly seated. Reinstall the memory module or, if necessary, replace it.
MEMORY ALLOCATION ERROR	The software you are attempting to run is conflicting with the operating system, another program, or a utility. Shut down the computer, wait for 30 seconds, and then restart it. Run the program again. If the error message still appears, see the software documentation.
MEMORY DOUBLE WORD LOGIC FAILURE AT ADDRESS, READ VALUE EXPECTING VALUE	A memory module may be faulty or improperly seated. Reinstall the memory module or, if necessary, replace it.
MEMORY ODD/EVEN LOGIC FAILURE AT ADDRESS, READ VALUE EXPECTING VALUE	A memory module may be faulty or improperly seated. Reinstall the memory module or, if necessary, replace it.
MEMORY WRITE/READ FAILURE AT ADDRESS, READ VALUE EXPECTING VALUE	A memory module may be faulty or improperly seated. Reinstall the memory module or, if necessary, replace it.
NO BOOT DEVICE AVAILABLE	The computer cannot find the hard drive. If the hard drive is your boot device, ensure that the drive is installed, properly seated, and partitioned as a boot device.
NO BOOT SECTOR ON HARD DRIVE	The operating system may be corrupted, Contact Dell .

Table 27. Diagnostic error messages (continued)

Error messages	Description
NO TIMER TICK INTERRUPT	A chip on the system board may be malfunctioning. Run the System Set tests in Dell Diagnostics .
NOT ENOUGH MEMORY OR RESOURCES. EXIT SOME PROGRAMS AND TRY AGAIN	You have too many programs open. Close all windows and open the program that you want to use.
OPERATING SYSTEM NOT FOUND	Reinstall the operating system. If the problem persists, Contact Dell .
OPTIONAL ROM BAD CHECKSUM	The optional ROM has failed. Contact Dell .
SECTOR NOT FOUND	The operating system cannot locate a sector on the hard drive. You may have a defective sector or corrupted File Allocation Table (FAT) on the hard drive. Run the Windows error-checking utility to check the file structure on the hard drive. See Windows Help and Support for instructions (click Start > Help and Support). If a large number of sectors are defective, back up the data (if possible), and then format the hard drive.
SEEK ERROR	The operating system cannot find a specific track on the hard drive.
SHUTDOWN FAILURE	A chip on the system board may be malfunctioning. Run the System Set tests in Dell Diagnostics . If the message reappears, Contact Dell .
TIME-OF-DAY CLOCK LOST POWER	System configuration settings are corrupted. Connect your computer to an electrical outlet to charge the battery. If the problem persists, try to restore the data by entering the System Setup program, then immediately exit the program. If the message reappears, Contact Dell .
TIME-OF-DAY CLOCK STOPPED	The reserve battery that supports the system configuration settings may require recharging. Connect your computer to an electrical outlet to charge the battery. If the problem persists, Contact Dell .
TIME-OF-DAY NOT SET-PLEASE RUN THE SYSTEM SETUP PROGRAM	The time or date stored in the system setup program does not match the system clock. Correct the settings for the Date and Time options.
TIMER CHIP COUNTER 2 FAILED	A chip on the system board may be malfunctioning. Run the System Set tests in Dell Diagnostics .
UNEXPECTED INTERRUPT IN PROTECTED MODE	The keyboard controller may be malfunctioning, or a memory module may be loose. Run the System Memory tests and the Keyboard Controller test in Dell Diagnostics or Contact Dell .
X:\ IS NOT ACCESSIBLE. THE DEVICE IS NOT READY	Insert a disk into the drive and try again.

Verifying system memory

Windows 10

1. Click the **Windows** button and select **All Settings**  **> System**.
2. Under **System**, click **About**.

Verifying system memory in setup

Steps


1. Turn on or restart your computer.
2. After the Dell logo is displayed, tap F2 until the Entering BIOS setup message appears. To enter the Boot selection menu, tap F12.
3. On the left pane, select **Settings > General > System Information**, the memory information is displayed on the right pane.

Testing memory using ePSA

Steps

1. Turn on or restart your computer.
2. After the Dell logo is displayed:
 - a. Press F12.
 - b. Select ePSA diagnostics

The PreBoot System Assessment (ePSA) starts on your computer.

 **NOTE:** If you wait too long and the operating system logo appears, continue to wait until you see the desktop. Turn off the computer and try again.

System error messages

Table 28. System error messages

System message	Description
Alert! Previous attempts at booting this system have failed at checkpoint [nnnn]. For help in resolving this problem, please note this checkpoint and contact Dell Technical Support	The computer failed to complete the boot routine three consecutive times for the same error.
CMOS checksum error	RTC is reset, BIOS Setup default has been loaded.
CPU fan failure	CPU fan has failed.
System fan failure	System fan has failed.
Hard-disk drive failure	Possible hard disk drive failure during POST.
Keyboard failure	Keyboard failure or loose cable. If reseating the cable does not solve the problem, replace the keyboard.
No boot device available	No bootable partition on hard disk drive, the hard disk drive cable is loose, or no bootable device exists. <ul style="list-style-type: none"> • If the hard drive is your boot device, ensure that the cables are connected and that the drive is installed properly and partitioned as a boot device. • Enter system setup and ensure that the boot sequence information is correct.
No timer tick interrupt	A chip on the system board might be malfunctioning or motherboard failure.
NOTICE - Hard Drive SELF MONITORING SYSTEM has reported that a parameter has exceeded its normal operating range. Dell recommends that you back up your data regularly. A parameter out of range may or may not indicate a potential hard drive problem	S.M.A.R.T error, possible hard disk drive failure.

Recovering the operating system

When your computer is unable to boot to the operating system even after repeated attempts, it automatically starts Dell SupportAssist OS Recovery.

Dell SupportAssist OS Recovery is a standalone tool that is preinstalled in all Dell computers installed with Windows operating system. It consists of tools to diagnose and troubleshoot issues that may occur before your computer boots to the operating system. It enables you to diagnose hardware issues, repair your computer, back up your files, or restore your computer to its factory state.

You can also download it from the Dell Support website to troubleshoot and fix your computer when it fails to boot into their primary operating system due to software or hardware failures.

For more information about the Dell SupportAssist OS Recovery, see *Dell SupportAssist OS Recovery User's Guide* at www.dell.com/serviceabilitytools. Click **SupportAssist** and then, click **SupportAssist OS Recovery**.

Real-Time Clock (RTC Reset)

The Real Time Clock (RTC) reset function allows you or the service technician to recover Dell systems from No POST/No Power/No Boot situations. The legacy jumper enabled RTC reset has been retired on these models.

Start the RTC reset with the system powered off and connected to AC power. Press and hold the power button for 20 seconds. The system RTC Reset occurs after you release the power button.


Backup media and recovery options

It is recommended to create a recovery drive to troubleshoot and fix problems that may occur with Windows. Dell proposes multiple options for recovering Windows operating system on your Dell PC. For more information, see [Dell Windows Backup Media and Recovery Options](#).

Wi-Fi power cycle

About this task

If your computer is unable to access the Internet due to Wi-Fi connectivity issues a Wi-Fi power cycle procedure may be performed. The following procedure provides the instructions on how to conduct a Wi-Fi power cycle:

 **NOTE:** Some ISPs (Internet Service Providers) provide a modem/router combo device.

Steps

1. Turn off your computer.
2. Turn off the modem.
3. Turn off the wireless router.
4. Wait for 30 seconds.
5. Turn on the wireless router.
6. Turn on the modem.
7. Turn on your computer.

Technical specifications

Topics:

- Processor specifications
- Memory specifications
- Video specifications
- Audio specifications
- Communication specifications
- Storage specifications
- Ports and connectors specifications
- Power supply specifications
- Physical dimension specifications
- Controls and lights specifications
- Environmental specifications

Processor specifications

OptiPlex 7050 systems are shipped with Intel 6th generation and 7th generation core processor technology.

NOTE: The clock speed and performance varies depending on the workload and other variables. Total cache up to 8 MB cache depending on processor type.

Feature	Specification
Processor type	<ul style="list-style-type: none"> • Intel Core i3-6100 (DC/3MB/4T/3.7GHz/65W) • Intel Core i3-6100T (DC/3MB/4T/3.2GHz/35W) • Intel Core i5-6400T (QC/ 6MB/4T/2.2GHz/35W) • Intel Core i5-6500 (QC/6MB/4T/3.2GHz/65W) • Intel Core i5-6500T (QC/6MB/4T/2.5GHz/35W) • Intel Core i5-6600 (QC/6MB/4T/3.3GHz/65W) • Intel Core i5-6600T (QC/6MB/4T/2.7GHz/35W) • Intel Core i7-6700 (QC/8MB/8T/3.4GHz/65W) • Intel Core i7-6700T (QC/8MB/8T/2.8GHz/35W) • Intel Core i3-7100 (DC/3MB/4T/3.9GHz/65W) • Intel Core i3-7100T (DC/3MB/4T/3.5GHz/35W) • Intel Core i3-7300T (DC/4MB/4T/3.5GHz/35W) • Intel Core i5-7400T (QC/ 6MB/4T/2.4GHz/35W) • Intel Core i5-7500 (QC/6MB/4T/3.4GHz/65W) • Intel Core i5-7500T (QC/6MB/4T/2.7GHz/35W) • Intel Core i5-7600 (QC/6MB/4T/3.5GHz/65W) • Intel Core i5-7600T (QC/6MB/4T/2.8GHz/35W) • Intel Core i7-7700 (QC/8MB/8T/3.6GHz/65W) • Intel Core i7-7700T (QC/8MB/8T/2.9GHz/35W)
Total cache	Up to 8 MB cache depending on processor type

Memory specifications

Feature	Specification
Type	2133 MHz / 2400 MHz <i>i</i> NOTE: 2133 MHz is applicable only for 6th Generation processors.
Connectors	Two DDR4 SODIMM slots
Memory capacity per slot	4 GB, 8 GB, and 16 GB
Minimum Memory	4 GB
Maximum Memory	32 GB

Video specifications

Feature	Specification
Video Controller - Integrated	CPU-GPU combo
Video Memory	independent card offering

Audio specifications

Feature	Specification
Controller	Realtek ALC3234 High Definition Audio Codec (integrated, supports multiple streaming)
Internal speaker amplifier	Integrated

Communication specifications

Table 29. Communication specifications

Feature		Specification
Network adapter	Integrated	Intel® i219-V Gigabit1 Ethernet LAN 10/100/1000 (Remote Wake Up, PXE and support)
	Wireless (optional)	<ul style="list-style-type: none"> Intel® Dual-Band Wireless-AC 8265 Wi-Fi + BT 4.2 Wireless Card (2x2), MU-MIMO-optional

Storage specifications

Feature	Specification
Hard drive	One 2.5-inch SATA and/or one M.2 PCIe SSD

Storage type	Interface type	Capacity
2.5-inch, 5400 RPM, HDD	SATA 3.0	Up to 2 TB

Feature Specification

Storage type	Interface type	Capacity
2.5-inch, 5400 RPM, Hybrid HDD	SATA 3.0	500 GB
2.5-inch, 7200 RPM, HDD	SATA 3.0	Up to 1 TB
2.5-inch, 7200 RPM, Opal Self Encrypting FIPS HDD	SATA 3.0	500 GB
3.5-inch, 7200 RPM, HDD	SATA 3.0	Up to 2 TB

Solid state drive One M.2 Solid State Drive

Storage type	Interface type	Capacity
2.5-inch, 7mm SATA, SSD	SATA, Class 20	Up to 512 GB
M.2 2280 SSD	PCIe NVMe Gen3x4, Class 40	Up to 512 GB
M.2 2280 SSD	PCIe NVMe Gen3x4, Class 40	256 GB
M.2 Intel Optane Memory	PCIe NVMe Gen3x2	16 GB

Optical drive N/A

RAID The system does not support RAID 0 or RAID 1 capability.

Ports and connectors specifications

Feature Specification

Rear USB 2.0 port	N/A
Rear USB 3.1 Gen 1 port	four
Front USB 3.1 Gen 1 port	one and one USB type-C port
Front USB PowerShare	one
Serial port	one (optional)
VGA port	one (optional)
DisplayPort 1.2	one + one (optional)
HDMI port	one
Rear port PS/2	one (optional)
Rear port RJ45	one
Rear port PS/2	keyboard and mouse (optional)

Power supply specifications

Feature Specification

Type	65 W / 130 W
-------------	--------------

Feature	Specification
Frequency	47 Hz - 63 Hz
Voltage	90 VAC - 264 VAC
Input current	1.7 A / 1.0 A 1.8 A / 0.9 A
Coin cell battery	3 V CR2032 lithium coin cell

Physical dimension specifications

Feature	Specification
Width	35.56 mm (1.40 inches)
Height	182.88 mm (7.20 inches)
Depth	177.80 mm (7.00 inches)
Weight	1.18 kg (2.60 lb)

Controls and lights specifications

Feature	Specification
Power button light	White light — Solid white light indicates power-on state; blinking white light indicates sleep state of the computer.
Hard Drive activity light	White light — Blinking white light indicates that the computer is reading data from or writing data to the hard drive.
Back panel:	
Link integrity light on integrated network adapter :	Green — a good 10 Mbps or 100 Mbps connection exists between the network and the computer. Orange — a good 1000 Mbps connection exists between the network and the computer. Off (no light) — the computer is not detecting a physical connection to the network.
Network activity light on integrated network adapter	Yellow light — A blinking yellow light indicates that network activity is present.
Power supply diagnostic light	Green light — The power supply is turned on and is functional. The power cable must be connected to the power connector (at the back of the computer) and the electrical outlet.

Environmental specifications

Airborne contaminant level: ISA-71 G1***: <300 A/month copper coupon corrosion AND <200 A/month of silver coupon corrosion

Description	Operating	Storage
Temperature range	10°C to 35°C (50°F to 95°F)	-40°C to 65°C (-40°F to 149°F)
Relative humidity (maximum)	20% to 80% (non-condensing)	5% to 95% (non-condensing)
Vibration (maximum) *	0.26 GRMS	1.37 GRMS
Shock (maximum)	40 G [†]	105 G [‡]
Altitude range	-15.20 m to 3048 m	-15.20 m to 10,668 m

Description	Operating	Storage
	(-50 ft to 10,000 ft)	(-50 ft to 35,000 ft)

* Measured using a random vibration spectrum that simulates user environment.

† Measured using a 2 ms half-sine pulse when the hard drive is in use.



‡ Measured using a 2 ms half-sine pulse when the hard-drive head is in parked position.

Getting help and contacting Dell

Self-help resources


You can get information and help on Dell products and services using these self-help resources:


Table 30. Self-help resources

Self-help resources	Resource location
Information about Dell products and services	www.dell.com
My Dell	
Tips	
Contact Support	In Windows search, type Contact Support , and press Enter.
Online help for operating system	www.dell.com/support/windows www.dell.com/support/linux
Troubleshooting information, user manuals, setup instructions, product specifications, technical help blogs, drivers, software updates, and so on.	www.dell.com/support
Dell knowledge base articles for a variety of computer concerns.	<ol style="list-style-type: none"> Go to https://www.dell.com/support/home/?app=knowledgebase. Type the subject or keyword in the Search box. Click Search to retrieve the related articles.
Learn and know the following information about your product: <ul style="list-style-type: none"> Product specifications Operating system Setting up and using your product Data backup Troubleshooting and diagnostics Factory and system restore BIOS information 	See <i>Me and My Dell</i> at www.dell.com/support/manuals . To locate the <i>Me and My Dell</i> relevant to your product, identify your product through one of the following: <ul style="list-style-type: none"> Select Detect Product. Locate your product through the drop-down menu under View Products. Enter the Service Tag number or Product ID in the search bar.

Contacting Dell

To contact Dell for sales, technical support, or customer service issues, see www.dell.com/contactdell.

 **NOTE:** Availability varies by country and product, and some services may not be available in your country.

 **NOTE:** If you do not have an active internet connection, you can find contact information on your purchase invoice, packing slip, bill, or Dell product catalog.