

Inspiron 3662

Service Manual

電腦型號 : Inspiron 3662
管制型號 : D20M
管制類型 : D20M002



註、警示與警告



註：「註」表示可以幫助您更有效地使用產品的重要資訊。



警示：「警示」表示有可能會損壞硬體或導致資料遺失，並告訴您如何避免發生此類問題。



警告：「警告」表示有可能會導致財產損失、人身傷害甚至死亡。

版權所有 © 2016 Dell Inc. 或其子公司。版權所有，翻印必究。Dell、EMC 與其他商標均為 Dell Inc. 或其子公司的商標。其他商標為其各自所有者的商標。

2016 - 12

修正版 A00

目錄

拆裝電腦內部元件之前.....	8
Before you begin	8
拆裝電腦內部元件之後.....	9
安全說明.....	10
建議的工具.....	11
Screw list.....	12
Inside view of your computer.....	13
System board components.....	14
卸下機箱蓋	16
Procedure.....	16
裝回機箱蓋。	17
Procedure.....	17
卸下前蓋	18
Prerequisites.....	18
Procedure.....	18
裝回前蓋.....	21
Procedure.....	21
Post-requisites.....	21



卸下記憶體模組.....	22
Prerequisites.....	22
Procedure.....	22
裝回記憶體模組.....	25
Procedure.....	25
Post-requisites.....	26
卸下 3.5 吋的硬碟機.....	27
Prerequisites.....	27
Procedure.....	27
裝回 3.5 吋硬碟機.....	32
Procedure.....	32
Post-requisites.....	32
卸下光碟機.....	33
Prerequisites.....	33
Procedure.....	33
裝回光碟機.....	38
Procedure.....	38
Post-requisites.....	38
卸下幣式電池.....	39
Prerequisites.....	39
Procedure.....	39
裝回幣式電池.....	42
Procedure.....	42
Post-requisites.....	42

卸下無線網卡.....	43
Prerequisites.....	43
Procedure.....	43
裝回無線網卡.....	46
Procedure.....	46
Post-requisites.....	47
卸下天線模組.....	48
Prerequisites.....	48
Procedure.....	48
裝回天線模組.....	51
Procedure.....	51
Post-requisites.....	51
卸下電源按鈕模組.....	52
Prerequisites.....	52
Procedure.....	52
裝回電源按鈕模組.....	55
Procedure.....	55
Post-requisites.....	55
卸下處理器風扇.....	56
Prerequisites.....	56
Procedure.....	56
裝回處理器風扇.....	59
Procedure.....	59
Post-requisites.....	59



卸下處理器散熱器.....	60
Prerequisites.....	60
Procedure.....	60
裝回處理器散熱器.....	62
Procedure.....	62
Post-requisites.....	62
Removing the front I/O-panel.....	63
Prerequisites.....	63
Procedure.....	63
Replacing the front I/O-panel.....	66
Procedure.....	66
Post-requisites.....	66
卸下主機板.....	67
Prerequisites.....	67
Procedure.....	67
裝回主機板.....	70
Procedure.....	70
Post-requisites.....	70
BIOS 設定程式.....	71
BIOS overview.....	71
進入 BIOS 設定程式.....	71
Clearing Forgotten Passwords.....	71
Prerequisites.....	71
Procedure.....	71

Post-requisites.....	73
Clearing CMOS Settings.....	73
Prerequisites.....	74
Procedure.....	74
Post-requisites.....	75
更新 BIOS.....	76
獲得幫助和聯絡 Dell 公司.....	77
自助資源.....	77
與 Dell 公司聯絡.....	77




拆裝電腦內部元件之前



註: 根據您所訂購的組態而定, 本文件中的圖片可能和您的電腦不同。

Before you begin


- 1 Save and close all open files and exit all open applications.
- 2 Shut down your computer. Click **Start** →  **Power** → **Shut down**.



註: If you are using a different operating system, see the documentation of your operating system for shut-down instructions.

- 3 Disconnect your computer and all attached devices from their electrical outlets.
- 4 Disconnect all attached network devices and peripherals, such as keyboard, mouse, and monitor from your computer.
- 5 Remove any media card and optical disc from your computer, if applicable.
- 6 After the computer is unplugged, press and hold the power button for 5 seconds to ground the system board.

拆裝電腦內部元件之後









 **警示:** 電腦內部如有遺留任何螺絲可能會造成嚴重電腦受損。

- 1 裝回所有螺絲，確定沒有任何遺漏的螺絲留在電腦內。
- 2 先連接您卸下的所有外接式裝置、週邊設備或纜線，然後再使用電腦。
- 3 先裝回您卸下的所有媒體卡、光碟或任何其他零件，然後再使用電腦。
- 4 將電腦和所有連接裝置連接至電源插座。
- 5 開啟您的電腦。



安全說明

請遵守以下安全規範，以避免電腦受到潛在的損壞，並確保您的人身安全。

-  **警告:** 拆裝電腦內部元件之前，請先閱讀電腦隨附的安全資訊。如需更多有關安全性的資訊最佳實務，請參閱 **Regulatory Compliance (法規遵循)** 首頁 www.dell.com/regulatory_compliance。
-  **警告:** 打開電腦護蓋或面板之前，請先斷開所有電源。拆裝電腦內部元件之後，請先裝回所有護蓋、面板和螺絲，然後再連接電源插座。
-  **警示:** 為避免損壞電腦，請確保工作表面平整乾淨。
-  **警示:** 為避免損壞元件和插卡，請握住元件和插卡的邊緣，並避免碰觸插腳和觸點。
-  **警示:** 您只能在 **Dell** 技術援助團隊的授權或指導之下執行故障排除和維修。由未經 **Dell** 授權的維修造成的損壞不在保固範圍之內。請參閱產品隨附或在 www.dell.com/regulatory_compliance 上的安全說明。
-  **警示:** 在觸摸電腦內部的任何元件之前，請觸摸未上漆的金屬表面（例如電腦背面的金屬），以確保接地並導去您身上的靜電。作業過程中，應經常觸摸未上漆的金屬表面，以導去可能損壞內部元件的靜電。
-  **警示:** 拔下纜線時，請拔出其連接器或拉式彈片，而不要拉扯纜線。某些纜線的連接器帶有鎖定彈片或指旋螺絲；在拔下此類纜線之前，您必須先鬆開鎖定彈片或指旋螺絲。在拔下纜線時，連接器的兩側應同時退出，以避免弄彎連接器插腳。連接纜線時，請確保連接器與連接埠的朝向正確並且對齊。
-  **警示:** 按下媒體卡讀取器中安裝的所有插卡，並從中退出插卡。

建議的工具

本文件中的程序可能需要以下工具：

- 十字槽螺絲起子
- 塑膠劃線器



Screw list

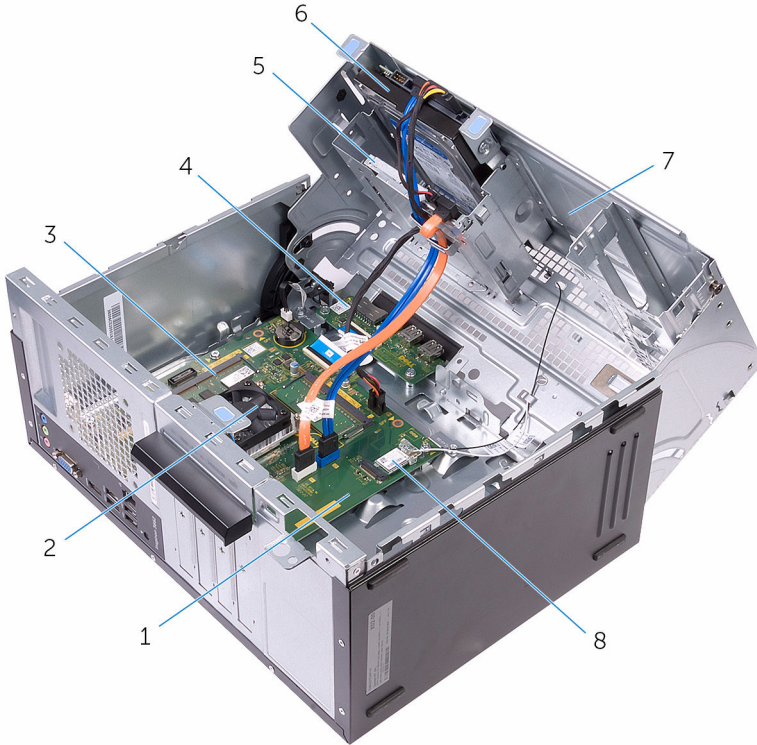
The following table provides the list of screws that are used for securing different components to the computer.

表 1. Screw list

Component	Secured to	Screw type	Quantity
Computer cover	Chassis	#6 – 32 UNC 1/4"	2
Hard drive	Side-chassis	#6 – 32 UNC 1/4"	1
Hard drive	Hard-drive bracket	#6 – 32 UNC 3.6 mm	4
ODD	Side-chassis	#6 – 32 UNC 3.6 mm	1
ODD	ODD bracket	M2xL2	3
Wireless card	System board	M2xL3.5	1
Processor fan	Heat sink	M6xL10	4
Front I/O-panel	Chassis	#6 – 32 UNC 1/4"	2
System board	Chassis	#6 – 32 UNC 1/4"	4



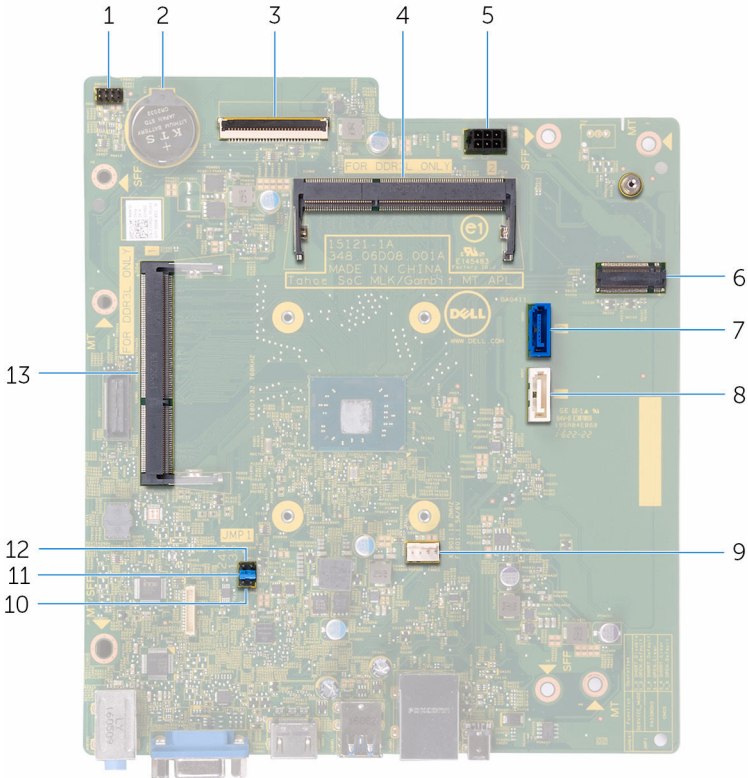
Inside view of your computer



- | | | | |
|---|---------------|---|--------------------------------------|
| 1 | system board | 2 | processor fan and heat-sink assembly |
| 3 | memory module | 4 | I/O board |
| 5 | optical drive | 6 | hard-drive assembly |
| 7 | side chassis | 8 | wireless card |



System board components



- | | | | |
|----|--|----|------------------------------------|
| 1 | power-button cable connector | 2 | coin-cell battery |
| 3 | I/O-cable connector | 4 | memory-module (slot 2) |
| 5 | hard-drive and optical drive power-cable connector | 6 | wireless-card slot |
| 7 | hard-drive data cable connector | 8 | optical-drive data cable connector |
| 9 | processor-fan cable connector | 10 | service mode jumper |
| 11 | password clear jumper | 12 | CMOS clear jumper |

13 memory-module (slot 1)



卸下機箱蓋



警告: 拆裝電腦內部元件之前，請先閱讀電腦隨附的安全資訊，並按照[拆裝電腦內部元件之前](#)中的步驟進行操作。拆裝電腦內部元件之後，請按照[拆裝電腦內部元件之後](#)中的指示進行操作。如需更多有關安全性的資訊最佳實務，請參閱 **Regulatory Compliance (法規遵循)** 首頁 www.dell.com/regulatory_compliance。

Procedure

- 1 Remove the two screws (#6 - 32 UNC 1/4") that secure the cover to the chassis.
- 2 Release the computer cover by sliding it towards the back of the computer and lift the cover off the chassis.



裝回機箱蓋。



警告: 拆裝電腦內部元件之前，請先閱讀電腦隨附的安全資訊，並按照[拆裝電腦內部元件之前](#)中的步驟進行操作。拆裝電腦內部元件之後，請按照[拆裝電腦內部元件之後](#)中的指示進行操作。如需更多有關安全性的資訊最佳實務，請參閱 **Regulatory Compliance (法規遵循)** 首頁 www.dell.com/regulatory_compliance。

Procedure

- 1 Align the tabs on the computer cover with the slots on the chassis and slide it towards the front of the computer.
- 2 Replace the two screws (#6 - 32 UNC 1/4") that secure the computer cover to the chassis.



卸下前蓋



警告: 拆裝電腦內部元件之前，請先閱讀電腦隨附的安全資訊，並按照[拆裝電腦內部元件之前](#)中的步驟進行操作。拆裝電腦內部元件之後，請按照[拆裝電腦內部元件之後](#)中的指示進行操作。如需更多有關安全性的資訊最佳實務，請參閱 **Regulatory Compliance (法規遵循)** 首頁 www.dell.com/regulatory_compliance。

Prerequisites

Remove the [computer cover](#).

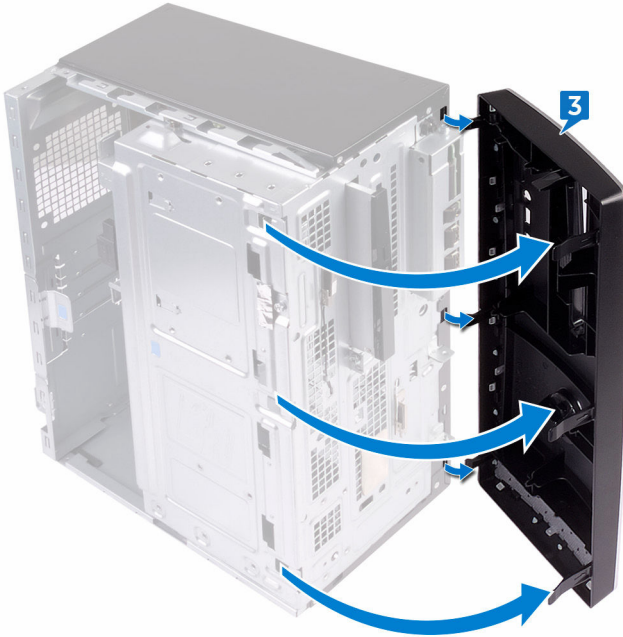
Procedure

- 1 Place the computer in an upright position.

- 2 Grasp and release the front bezel tabs sequentially from the top, by moving them outward from the chassis.



- 3 Rotate and pull the front bezel away from the front of the computer to release the front bezel clamps from the front panel slots.



裝回前蓋



警告: 拆裝電腦內部元件之前，請先閱讀電腦隨附的安全資訊，並按照[拆裝電腦內部元件之前](#)中的步驟進行操作。拆裝電腦內部元件之後，請按照[拆裝電腦內部元件之後](#)中的指示進行操作。如需更多有關安全性的資訊最佳實務，請參閱 **Regulatory Compliance (法規遵循)** 首頁 www.dell.com/regulatory_compliance。

Procedure

- 1 Align and insert the front bezel clamps into the front panel slots.
- 2 Rotate the front bezel towards the chassis until the front-bezel tabs snap into place.

Post-requisites

Replace the [computer cover](#).



卸下記憶體模組



警告: 拆裝電腦內部元件之前，請先閱讀電腦隨附的安全資訊，並按照[拆裝電腦內部元件之前](#)中的步驟進行操作。拆裝電腦內部元件之後，請按照[拆裝電腦內部元件之後](#)中的指示進行操作。如需更多有關安全性的資訊最佳實務，請參閱 **Regulatory Compliance (法規遵循)** 首頁 www.dell.com/regulatory_compliance。

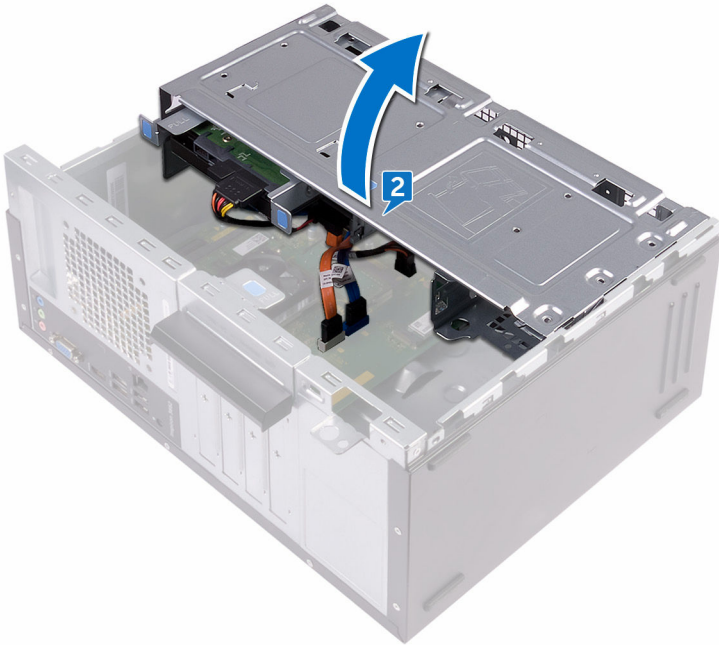
Prerequisites

- 1 Remove the [computer cover](#).
- 2 Remove the [front bezel](#).

Procedure

- 1 Place the computer with the side-chassis facing up.


- 2 Lift and rotate the side-chassis away from the computer.




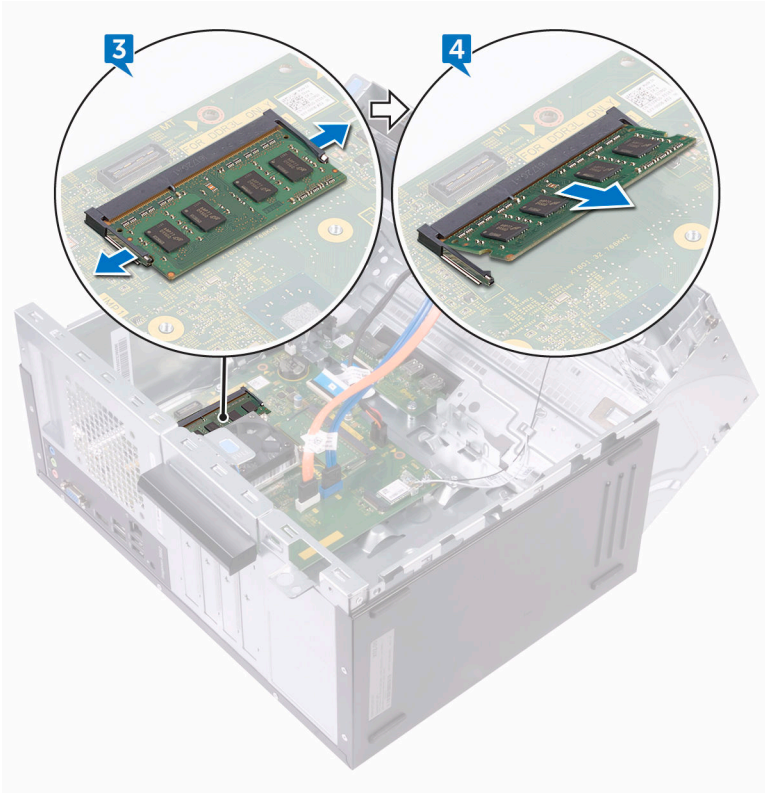
- 3 Using your fingertips, spread apart the securing clip at each end of the memory-module slot until the memory module pops up.



- 4 Slide and remove the memory module from the memory-module slot.

 **註: If the memory module is difficult to remove, gently ease the memory module back and forth to remove it from the slot.**

 **警告: To prevent damage to the memory module, hold the memory module by the edges. Do not touch the components on the memory module.**



裝回記憶體模組



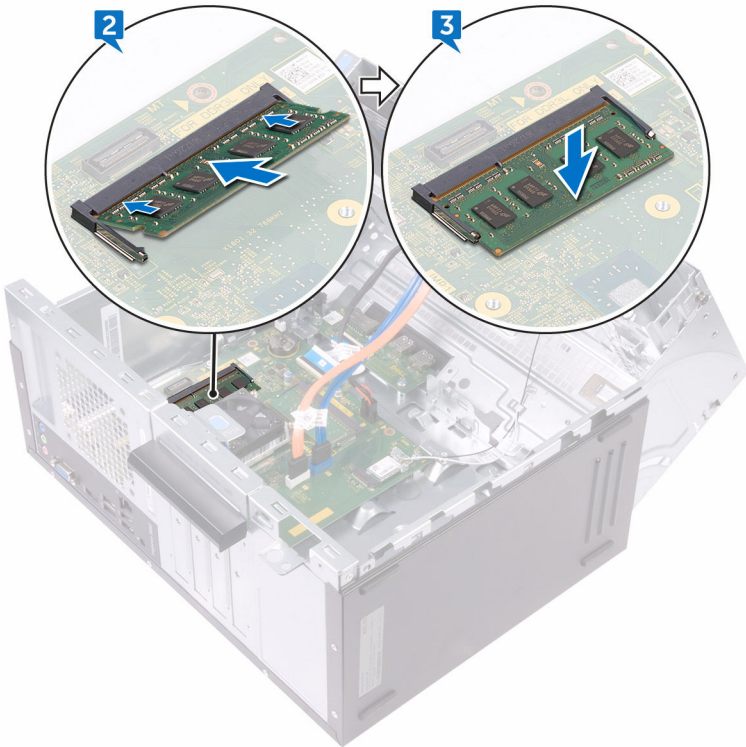
警告: 拆裝電腦內部元件之前，請先閱讀電腦隨附的安全資訊，並按照[拆裝電腦內部元件之前](#)中的步驟進行操作。拆裝電腦內部元件之後，請按照[拆裝電腦內部元件之後](#)中的指示進行操作。如需更多有關安全性的資訊最佳實務，請參閱 **Regulatory Compliance (法規遵循)** 首頁 www.dell.com/regulatory_compliance。

Procedure

- 1 Ensure that the securing clips are extended away from the memory-module slot.
- 2 Align the notch on the memory module with the tab on the memory-module slot.



- 3 Insert the memory module into the memory-module slot and press the memory module down until it clicks into place.



- 4 Rotate the side-chassis towards the computer until it snaps into place.

Post-requisites

- 1 Replace the [front bezel](#).
- 2 Replace the [computer cover](#).

卸下 3.5 吋的硬碟機



警告: 拆裝電腦內部元件之前，請先閱讀電腦隨附的安全資訊，並按照[拆裝電腦內部元件之前](#)中的步驟進行操作。拆裝電腦內部元件之後，請按照[拆裝電腦內部元件之後](#)中的指示進行操作。如需更多有關安全性的資訊最佳實務，請參閱 **Regulatory Compliance (法規遵循)** 首頁 www.dell.com/regulatory_compliance。

Prerequisites

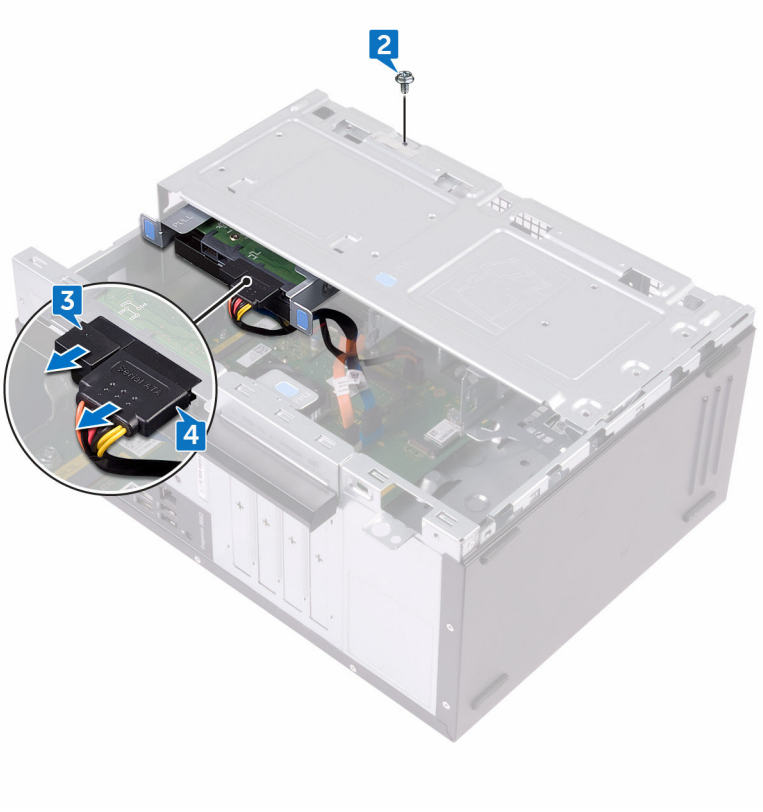
- 1 Remove the [computer cover](#).
- 2 Remove the [front bezel](#).

Procedure

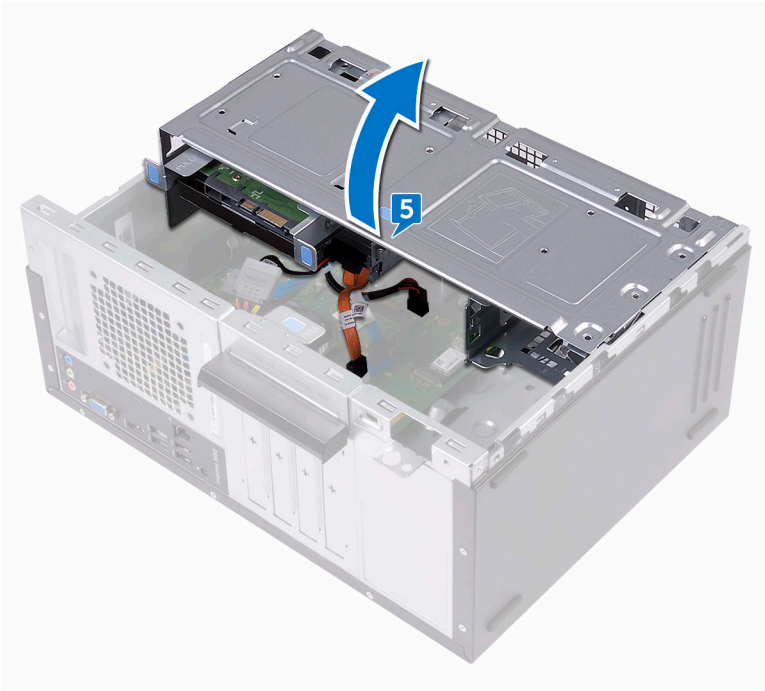
- 1 Place the computer with the side-chassis facing up.
- 2 Remove the screw (#6 – 32 UNC 1/4") that secures the hard-drive assembly to the side-chassis.
- 3 Disconnect the data cable from the hard drive.



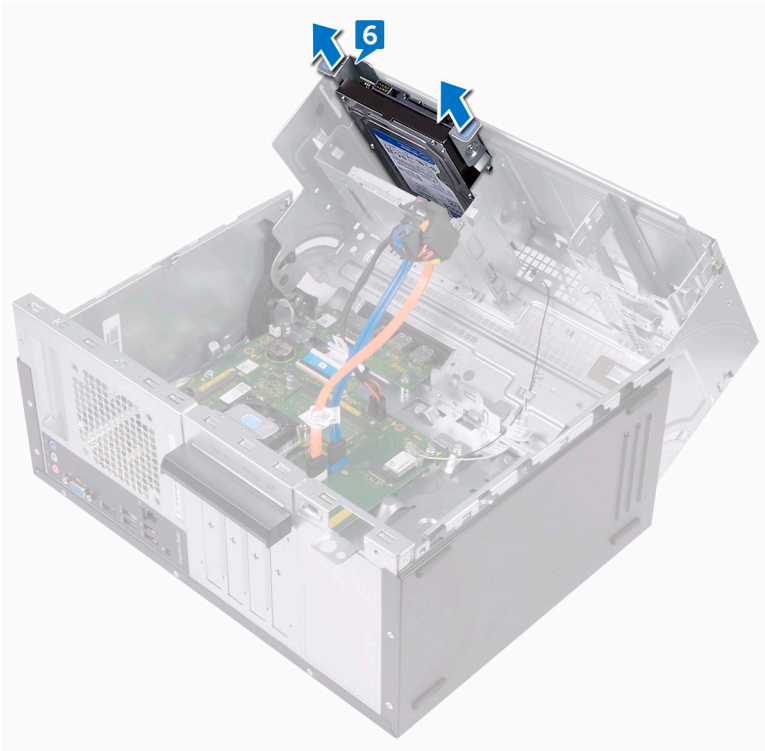
- 4 Disconnect the power cable from the hard drive.



- 5 Lift and rotate the side-chassis away from the computer.

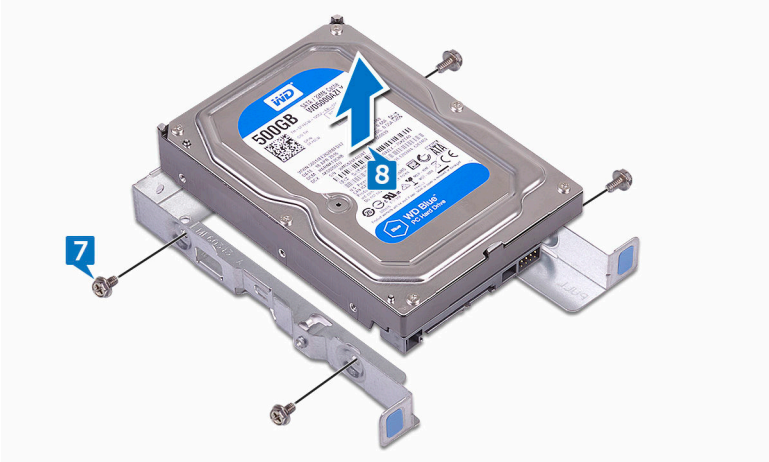


- Using the release tabs on the hard-drive assembly, slide the hard-drive assembly out of the slot on the side-chassis.



- Remove the four screws (#6 - 32 UNC 3.6 mm) that secure the hard-drive bracket to the hard drive.

8 Lift the hard drive off the hard-drive bracket.



裝回 3.5 吋硬碟機



警告: 拆裝電腦內部元件之前，請先閱讀電腦隨附的安全資訊，並按照[拆裝電腦內部元件之前](#)中的步驟進行操作。拆裝電腦內部元件之後，請按照[拆裝電腦內部元件之後](#)中的指示進行操作。如需更多有關安全性的資訊最佳實務，請參閱 **Regulatory Compliance (法規遵循)** 首頁 www.dell.com/regulatory_compliance。

Procedure

- 1 Place the hard drive in the hard-drive bracket.
- 2 Align the screw holes on the hard drive with the screw holes on the hard-drive bracket.
- 3 Replace the four screws (#6 – 32 UNC 3.6 mm) that secure the hard-drive bracket to the hard drive.
- 4 Slide the hard-drive assembly into the slot on the side-chassis until it snaps into place.
- 5 Connect the data cable and the power cable to the hard drive.
- 6 Rotate the side-chassis towards the computer until it snaps into place.
- 7 Replace the screw (#6 – 32 UNC 1/4") that secures the hard-drive assembly to the side-chassis.

Post-requisites

- 1 Replace the [front bezel](#).
- 2 Replace the [computer cover](#).

卸下光碟機



警告: 拆裝電腦內部元件之前，請先閱讀電腦隨附的安全資訊，並按照[拆裝電腦內部元件之前](#)中的步驟進行操作。拆裝電腦內部元件之後，請按照[拆裝電腦內部元件之後](#)中的指示進行操作。如需更多有關安全性的資訊最佳實務，請參閱 **Regulatory Compliance (法規遵循)** 首頁 www.dell.com/regulatory_compliance。

Prerequisites

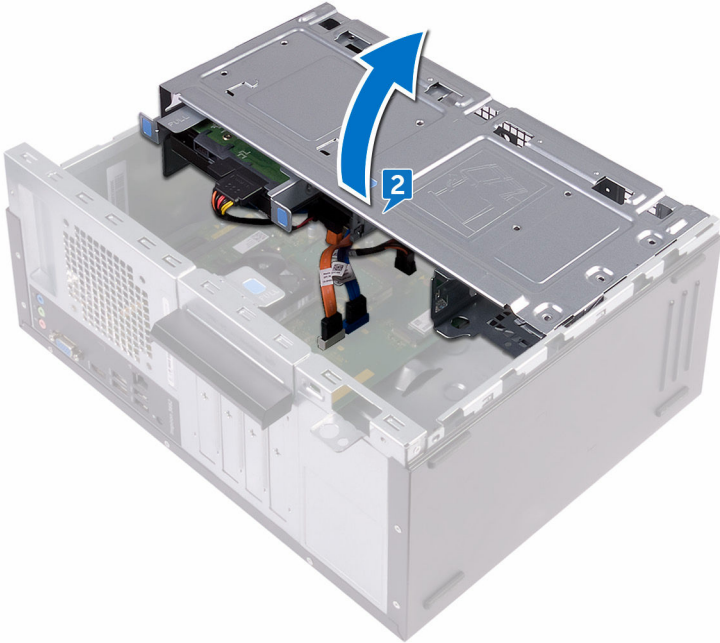
- 1 Remove the [computer cover](#).
- 2 Remove the [front bezel](#).

Procedure

- 1 Place the computer with the side-chassis facing up.



- 2 Lift and rotate the side-chassis away from the computer.



- 3 Disconnect the power cable from the optical drive.

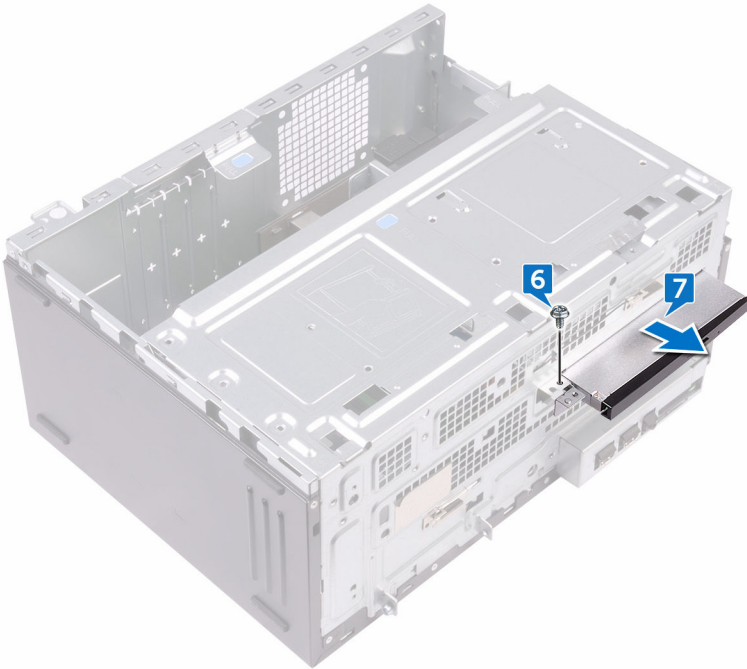
- 4 Disconnect the data cable from the optical drive.



- 5 Rotate the side-chassis towards the computer until it snaps into place.
- 6 Remove the screw (#6 - 32 UNC 3.6 mm) that secures the optical-drive assembly to the side-chassis.



- 7 Gently slide the optical-drive assembly out of the optical-drive bay through the front of the computer.



- 8 Remove the three screws (M2xL2) that secure the optical-drive bracket to the optical drive.

- 9 Lift the optical-drive bracket off the optical drive.



- 10 Gently pull and disconnect the optical-drive bezel from the optical drive.



裝回光碟機



警告: 拆裝電腦內部元件之前，請先閱讀電腦隨附的安全資訊，並按照[拆裝電腦內部元件之前](#)中的步驟進行操作。拆裝電腦內部元件之後，請按照[拆裝電腦內部元件之後](#)中的指示進行操作。如需更多有關安全性的資訊最佳實務，請參閱 **Regulatory Compliance (法規遵循)** 首頁 www.dell.com/regulatory_compliance。

Procedure

- 1 Align and snap the optical-drive bezel to the optical drive.
- 2 Align the screw holes on the optical-drive bracket with the screw holes on the optical drive.
- 3 Replace the three screws (M2xL2) that secure the optical-drive bracket to the optical drive.
- 4 Slide the optical-drive assembly into the optical-drive bay through the front of the computer.
- 5 Align the screw hole on the optical-drive assembly with the screw hole on the chassis.
- 6 Replace the screw (#6 – 32 UNC 3.6 mm) that secures the optical-drive assembly to the chassis.
- 7 Lift and rotate the side-chassis away from the computer.
- 8 Connect the data cable and power cable to the optical drive.
- 9 Rotate the side-chassis towards the computer until it snaps into place.

Post-requisites

- 1 Replace the [front bezel](#).
- 2 Replace the [computer cover](#).

卸下幣式電池



警告: 拆裝電腦內部元件之前，請先閱讀電腦隨附的安全資訊，並按照[拆裝電腦內部元件之前](#)中的步驟進行操作。拆裝電腦內部元件之後，請按照[拆裝電腦內部元件之後](#)中的指示進行操作。如需更多有關安全性的資訊最佳實務，請參閱 **Regulatory Compliance (法規遵循)** 首頁 www.dell.com/regulatory_compliance。



警告: 取出幣式電池會將 BIOS 設定程式重設為預設設定。建議您在取出幣式電池之前先記下 BIOS 設定程式的設定。

Prerequisites

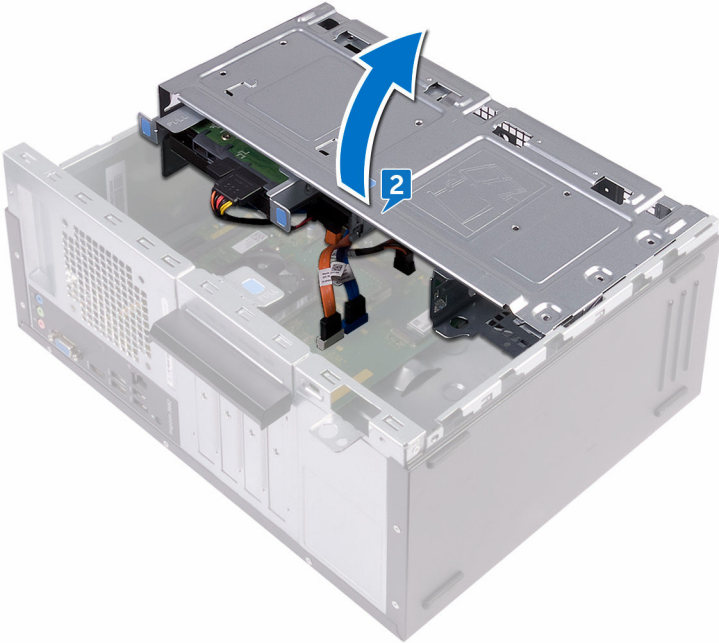
- 1 Remove the [computer cover](#).
- 2 Remove the [front bezel](#).

Procedure

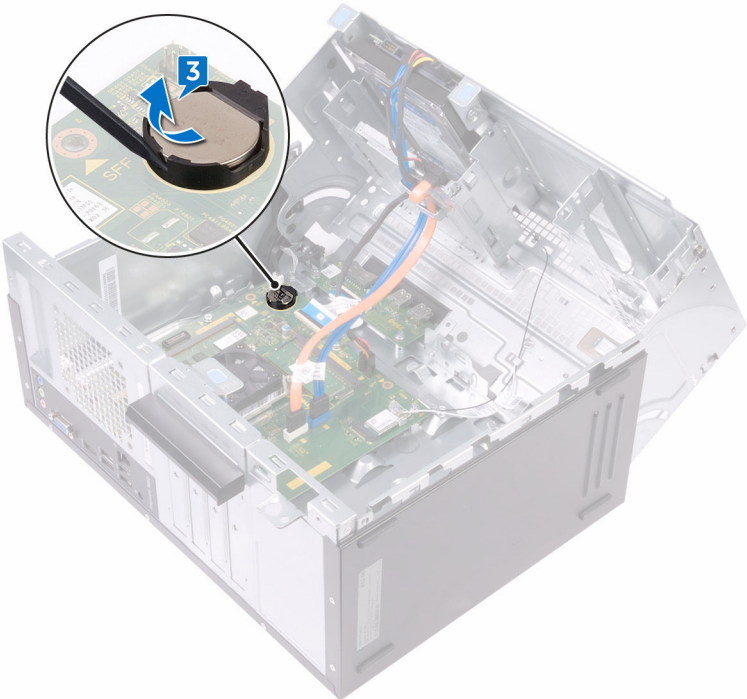
- 1 Place the computer with the side-chassis facing up.



- 2 Lift and rotate the side-chassis away from the computer.



3 Using a plastic scribe, pry the coin-cell battery out of its socket.



裝回幣式電池



警告: 拆裝電腦內部元件之前，請先閱讀電腦隨附的安全資訊，並按照[拆裝電腦內部元件之前](#)中的步驟進行操作。拆裝電腦內部元件之後，請按照[拆裝電腦內部元件之後](#)中的指示進行操作。如需更多有關安全性的資訊最佳實務，請參閱 **Regulatory Compliance (法規遵循)** 首頁 www.dell.com/regulatory_compliance。

Procedure

- 1 Insert a new coin-cell battery (CR2032) into the battery socket with the positive side facing up, and snap the battery into place.
- 2 Rotate the side-chassis towards the computer until it snaps into place.

Post-requisites

- 1 Replace the [front bezel](#).
- 2 Replace the [computer cover](#).

卸下無線網卡



警告: 拆裝電腦內部元件之前，請先閱讀電腦隨附的安全資訊，並按照[拆裝電腦內部元件之前](#)中的步驟進行操作。拆裝電腦內部元件之後，請按照[拆裝電腦內部元件之後](#)中的指示進行操作。如需更多有關安全性的資訊最佳實務，請參閱 **Regulatory Compliance (法規遵循)** 首頁 www.dell.com/regulatory_compliance。

Prerequisites

- 1 Remove the [computer cover](#).
- 2 Remove the [front bezel](#).

Procedure

- 1 Place the computer with the side-chassis facing up.

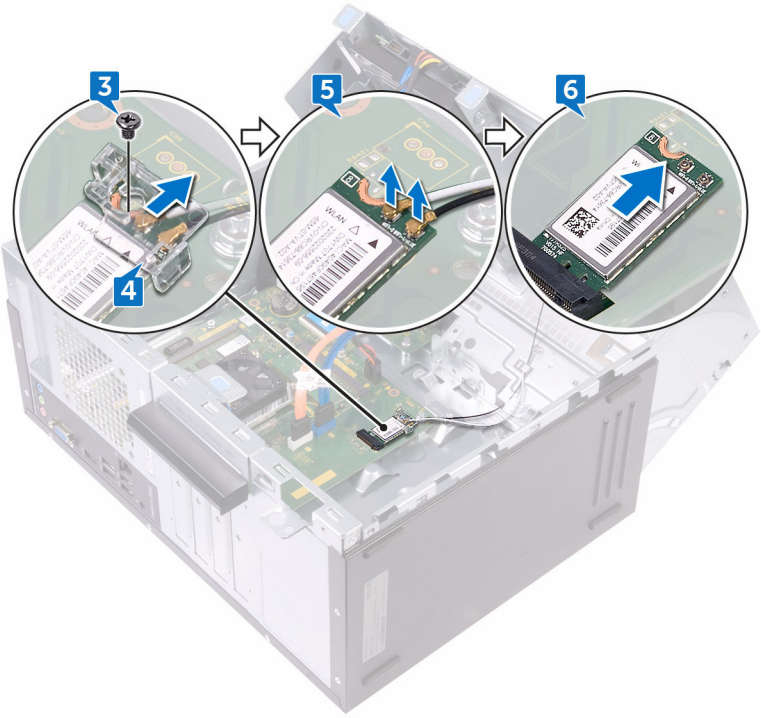


- 2 Lift and rotate the side-chassis away from the computer.



- 3 Remove the screw (M2xL3.5) that secures the wireless card to the system board.
- 4 Lift the wireless-card bracket off the wireless card.
- 5 Disconnect the antenna cables from the wireless card.

6 Slide and remove the wireless card from the wireless-card slot.



裝回無線網卡

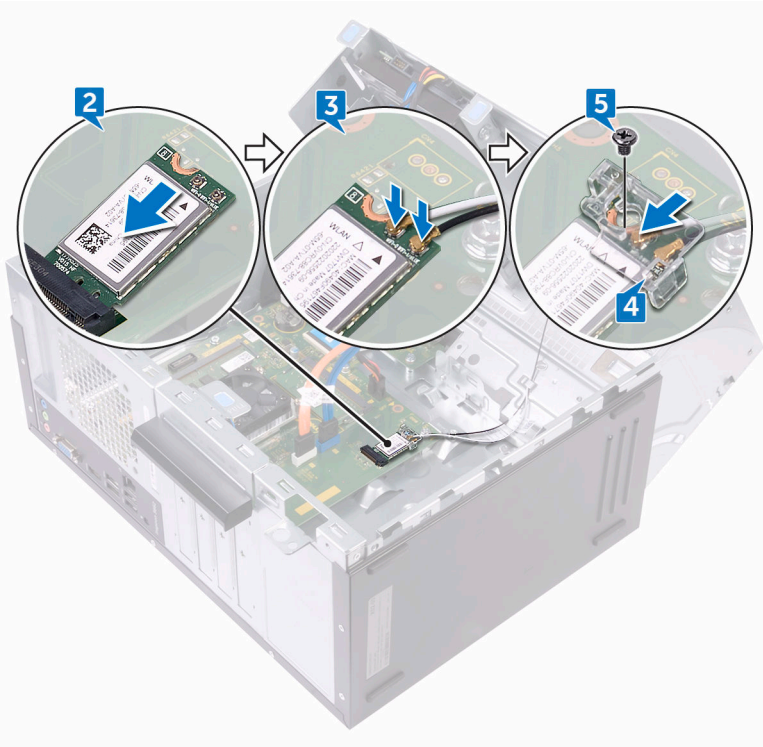


警告: 拆裝電腦內部元件之前，請先閱讀電腦隨附的安全資訊，並按照[拆裝電腦內部元件之前](#)中的步驟進行操作。拆裝電腦內部元件之後，請按照[拆裝電腦內部元件之後](#)中的指示進行操作。如需更多有關安全性的資訊最佳實務，請參閱 **Regulatory Compliance (法規遵循)** 首頁 www.dell.com/regulatory_compliance。

Procedure

- 1 Align the notch on the wireless card with the tab on the wireless-card slot.
- 2 Slide the wireless card at an angle into the wireless-card slot.
- 3 Connect the antenna cables to the wireless card.
- 4 Place the wireless-card bracket over the wireless card.

- 5 Replace the screw (M2xL3.5) that secures the wireless card to the system board.



- 6 Rotate the side-chassis towards the computer until it snaps into place.

Post-requisites

- 1 Replace the [front bezel](#).
- 2 Replace the [computer cover](#).



卸下天線模組



警告: 拆裝電腦內部元件之前，請先閱讀電腦隨附的安全資訊，並按照[拆裝電腦內部元件之前](#)中的步驟進行操作。拆裝電腦內部元件之後，請按照[拆裝電腦內部元件之後](#)中的指示進行操作。如需更多有關安全性的資訊最佳實務，請參閱 **Regulatory Compliance (法規遵循)** 首頁 www.dell.com/regulatory_compliance。

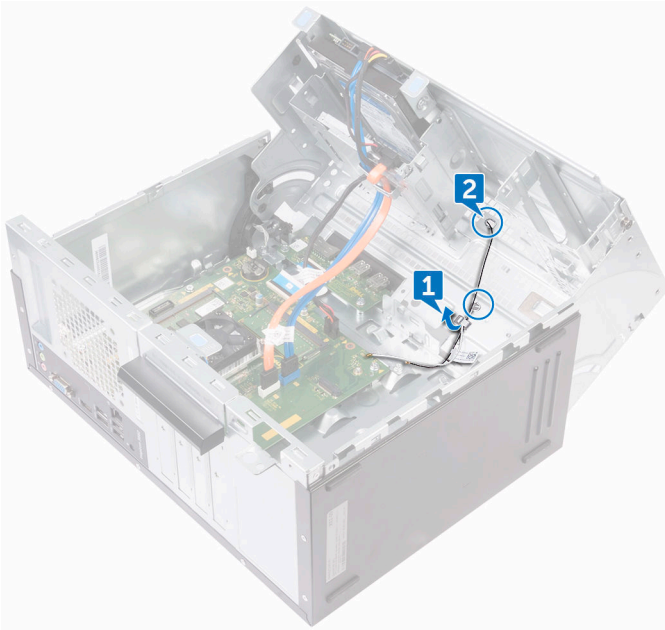
Prerequisites

- 1 Remove the [computer cover](#).
- 2 Remove the [front bezel](#).
- 3 Follow the procedure from step 1 to step 4 in “[Removing the wireless card](#)” .

Procedure

- 1 Note the antenna-cable routing and remove the antenna cables from the routing guide inside the chassis.

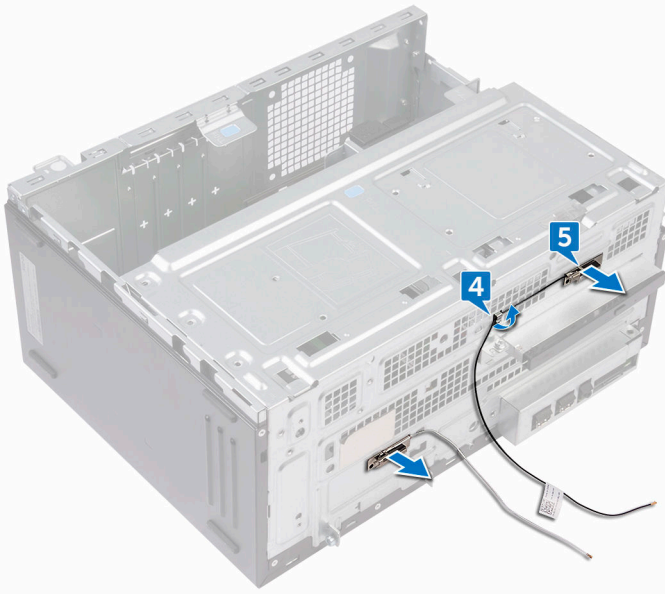
-
- 2** Push down the antenna cables through the cable-routing slots on the side-chassis.



-
-
- 3** Rotate the side-chassis towards the computer until it snaps into place.
- 4** Note the antenna-cable routing and remove the antenna cables from the routing guides on the side-chassis.



- 5 Using a plastic scribe, gently pry the antenna modules off the side-chassis.



裝回天線模組



警告: 拆裝電腦內部元件之前，請先閱讀電腦隨附的安全資訊，並按照[拆裝電腦內部元件之前](#)中的步驟進行操作。拆裝電腦內部元件之後，請按照[拆裝電腦內部元件之後](#)中的指示進行操作。如需更多有關安全性的資訊最佳實務，請參閱 **Regulatory Compliance (法規遵循)** 首頁 www.dell.com/regulatory_compliance。

Procedure

- 1 Adhere the antenna modules to the side-chassis.
- 2 Route the antenna cables through the routing guides on the side-chassis.
- 3 Lift and rotate the side-chassis away from the computer.
- 4 Slide the antenna cables through the cable-routing slots on the side-chassis.
- 5 Route the antenna cables through the routing guides inside the chassis.

Post-requisites

- 1 Follow the procedure from step 3 to step 6 in [“Replacing the wireless card”](#).
- 2 Replace the [front bezel](#).
- 3 Replace the [computer cover](#).



卸下電源按鈕模組



警告: 拆裝電腦內部元件之前，請先閱讀電腦隨附的安全資訊，並按照[拆裝電腦內部元件之前](#)中的步驟進行操作。拆裝電腦內部元件之後，請按照[拆裝電腦內部元件之後](#)中的指示進行操作。如需更多有關安全性的資訊最佳實務，請參閱 **Regulatory Compliance (法規遵循)** 首頁 www.dell.com/regulatory_compliance。

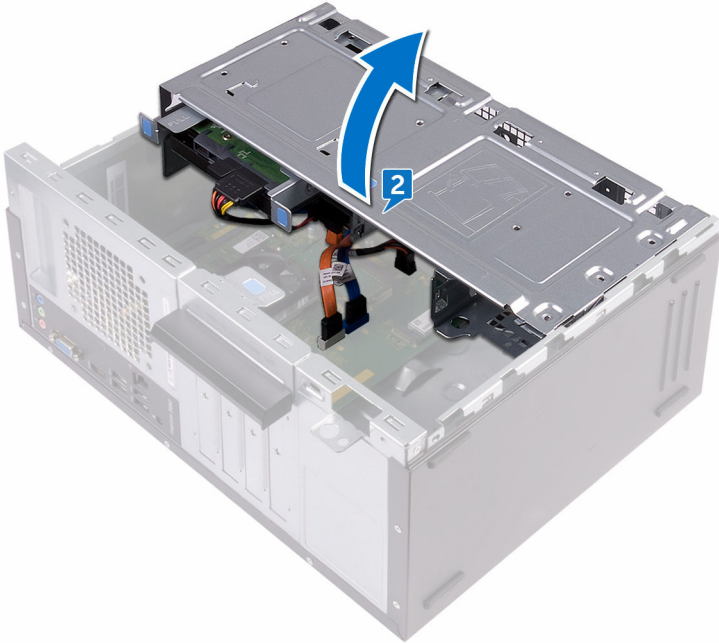
Prerequisites

- 1 Remove the [computer cover](#).
- 2 Remove the [front bezel](#).

Procedure

- 1 Place the computer with the side-chassis facing up.

- 2 Lift and rotate the side-chassis away from the computer.



- 3 Disconnect the power-button cable from the system board.
- 4 Press the tab on the power-button module to release the module from the front panel.



裝回電源按鈕模組



警告: 拆裝電腦內部元件之前，請先閱讀電腦隨附的安全資訊，並按照[拆裝電腦內部元件之前](#)中的步驟進行操作。拆裝電腦內部元件之後，請按照[拆裝電腦內部元件之後](#)中的指示進行操作。如需更多有關安全性的資訊最佳實務，請參閱 **Regulatory Compliance (法規遵循)** 首頁 www.dell.com/regulatory_compliance。

Procedure

- 1 Route the power-button board cable through the slot on the front panel.
- 2 Align and snap the power-button module into the slot on the front panel.
- 3 Connect the power-button board cable to the system board.
- 4 Rotate the side-chassis towards the computer until it snaps into place.

Post-requisites

- 1 Replace the [front bezel](#).
- 2 Replace the [computer cover](#).



卸下處理器風扇



警告: 拆裝電腦內部元件之前，請先閱讀電腦隨附的安全資訊，並按照[拆裝電腦內部元件之前](#)中的步驟進行操作。拆裝電腦內部元件之後，請按照[拆裝電腦內部元件之後](#)中的指示進行操作。如需更多有關安全性的資訊最佳實務，請參閱 **Regulatory Compliance (法規遵循)** 首頁 www.dell.com/regulatory_compliance。

Prerequisites

- 1 Remove the [computer cover](#).
- 2 Remove the [front bezel](#).

Procedure

- 1 Place the computer with the side-chassis facing up.

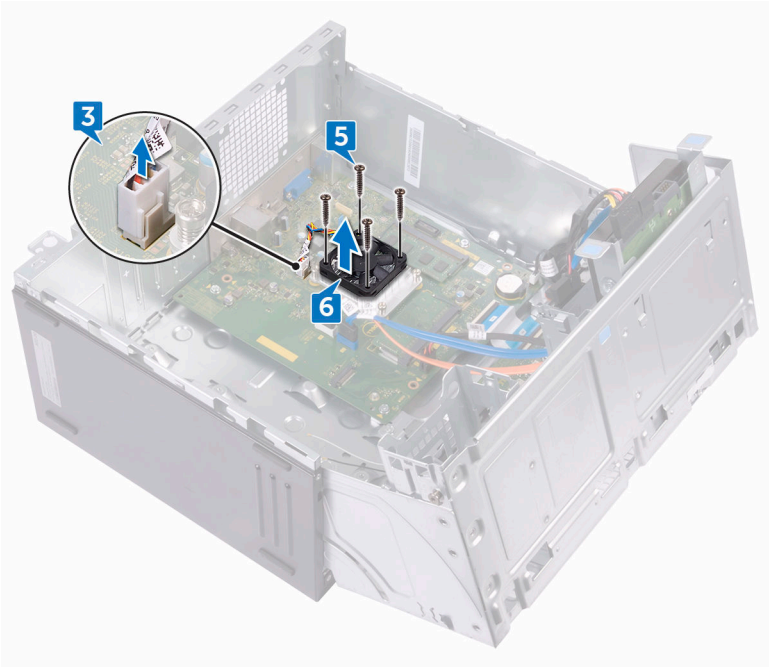
- 2 Lift and rotate the side-chassis away from the computer.



- 3 Disconnect the processor-fan cable from the system board.
- 4 Note the location of the fan on the heat sink assembly.
- 5 Remove the four screws (M6xL10) that secure the processor fan to the heat sink.



6 Lift the processor fan off the heat sink.



裝回處理器風扇



警告: 拆裝電腦內部元件之前，請先閱讀電腦隨附的安全資訊，並按照[拆裝電腦內部元件之前](#)中的步驟進行操作。拆裝電腦內部元件之後，請按照[拆裝電腦內部元件之後](#)中的指示進行操作。如需更多有關安全性的資訊最佳實務，請參閱 **Regulatory Compliance (法規遵循)** 首頁 www.dell.com/regulatory_compliance。

Procedure

- 1 Align the screw holes on the processor fan with the screw holes on the heat sink.
- 2 Replace the four screws (M6xL10) that secure the processor fan to the heat sink.
- 3 Connect the processor-fan cable to the system board.
- 4 Rotate the side-chassis towards the computer until it snaps into place.

Post-requisites

- 1 Replace the [front bezel](#).
- 2 Replace the [computer cover](#).



卸下處理器散熱器



警告: 拆裝電腦內部元件之前，請先閱讀電腦隨附的安全資訊，並按照[拆裝電腦內部元件之前](#)中的步驟進行操作。拆裝電腦內部元件之後，請按照[拆裝電腦內部元件之後](#)中的指示進行操作。如需更多有關安全性的資訊最佳實務，請參閱 **Regulatory Compliance (法規遵循)** 首頁 www.dell.com/regulatory_compliance。



警示: 為確保處理器獲得最佳冷卻效果，請勿碰觸散熱器上的導熱區域。皮膚上的油脂會降低熱脂的導熱能力。

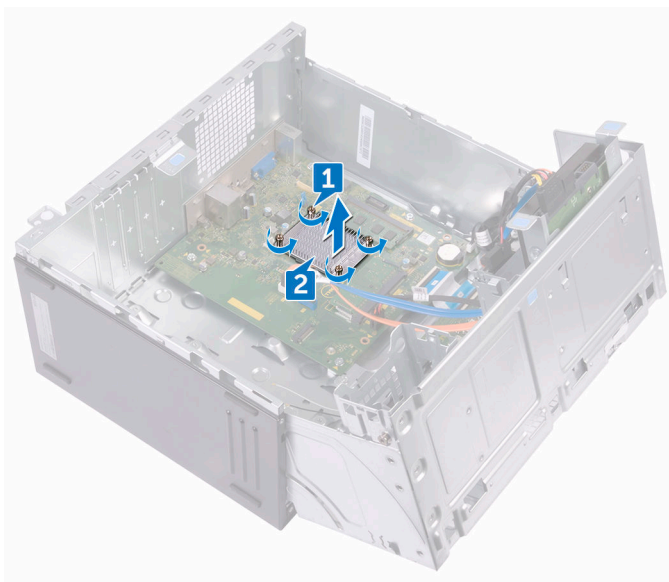
Prerequisites

- 1 Remove the [computer cover](#).
- 2 Remove the [front bezel](#).
- 3 Remove the [processor fan](#).

Procedure

- 1 In sequential order (as indicated on the heat sink), loosen the captive screws that secure the heat sink to the system board.

- 2 Lift the processor heat sink off system board.



裝回處理器散熱器



警告: 拆裝電腦內部元件之前，請先閱讀電腦隨附的安全資訊，並按照[拆裝電腦內部元件之前](#)中的步驟進行操作。拆裝電腦內部元件之後，請按照[拆裝電腦內部元件之後](#)中的指示進行操作。如需更多有關安全性的資訊最佳實務，請參閱 **Regulatory Compliance (法規遵循)** 首頁 www.dell.com/regulatory_compliance。



警示: 為確保處理器獲得最佳冷卻效果，請勿碰觸散熱器上的導熱區域。皮膚上的油脂會降低熱脂的導熱能力。

Procedure

- 1 Place the processor heat sink over the processor.
- 2 Align the captive screws on the heat sink with the screw holes on the system board.
- 3 In sequential order (as indicated on the heat sink), tighten the captive screws that secure the heat sink to the system board.

Post-requisites

- 1 Replace the [processor fan](#).
- 2 Replace the [front bezel](#).
- 3 Replace the [computer cover](#).

Removing the front I/O-panel



警告: 拆裝電腦內部元件之前，請先閱讀電腦隨附的安全資訊，並按照[拆裝電腦內部元件之前](#)中的步驟進行操作。拆裝電腦內部元件之後，請按照[拆裝電腦內部元件之後](#)中的指示進行操作。如需更多有關安全性的資訊最佳實務，請參閱 **Regulatory Compliance (法規遵循)** 首頁 www.dell.com/regulatory_compliance。

Prerequisites

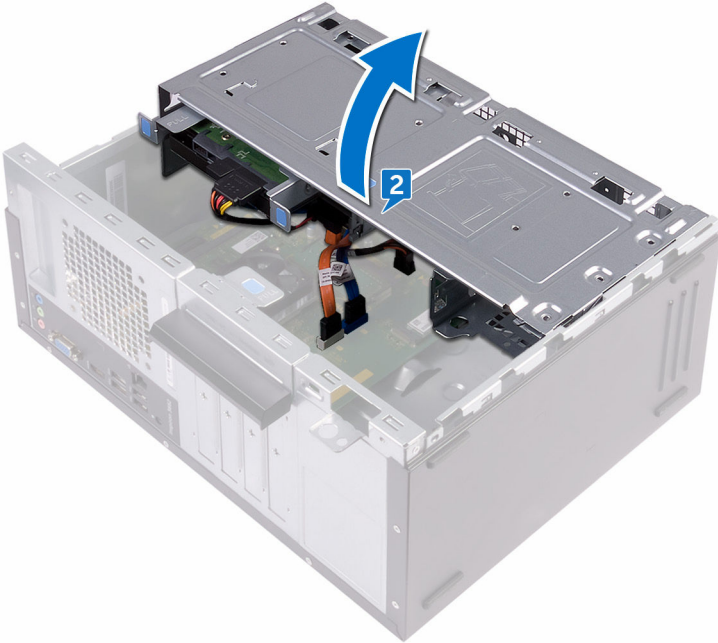
- 1 Remove the [computer cover](#).
- 2 Remove the [front bezel](#).

Procedure

- 1 Place the computer with the side-chassis facing up.

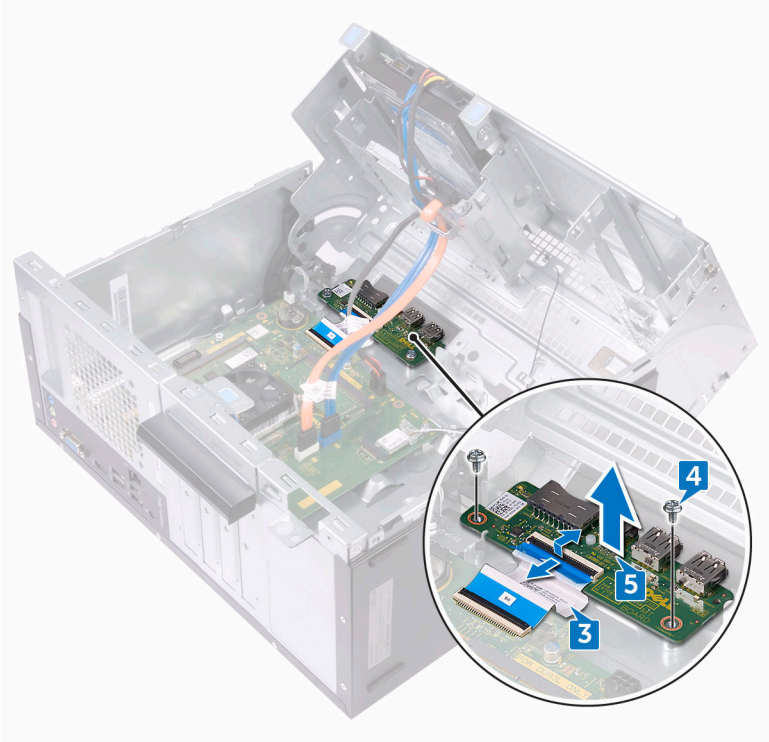


- 2 Lift and rotate the side-chassis away from the computer.



- 3 Disconnect the I/O-board cable from the I/O board.
- 4 Remove the two screws (#6 – 32 UNC 1/4") that secure the I/O board to the chassis.

5 Lift the I/O board off the chassis.



Replacing the front I/O-panel



警告: 拆裝電腦內部元件之前，請先閱讀電腦隨附的安全資訊，並按照[拆裝電腦內部元件之前](#)中的步驟進行操作。拆裝電腦內部元件之後，請按照[拆裝電腦內部元件之後](#)中的指示進行操作。如需更多有關安全性的資訊最佳實務，請參閱 **Regulatory Compliance (法規遵循)** 首頁 www.dell.com/regulatory_compliance。

Procedure

- 1 Place the I/O board in the slot on the chassis.
- 2 Align the screw holes on the I/O board with the screw holes on the chassis.
- 3 Replace the two screws (#6 - 32 UNC 1/4") that secure the I/O board to the chassis.
- 4 Connect the I/O-board cable to the I/O board.

Post-requisites

- 1 Replace the [front bezel](#).
- 2 Replace the [computer cover](#).

卸下主機板



警告: 拆裝電腦內部元件之前, 請先閱讀電腦隨附的安全資訊, 並按照[拆裝電腦內部元件之前](#)中的步驟進行操作。拆裝電腦內部元件之後, 請按照[拆裝電腦內部元件之後](#)中的指示進行操作。如需更多有關安全性的資訊最佳實務, 請參閱 **Regulatory Compliance (法規遵循)** 首頁 www.dell.com/regulatory_compliance。



註: 您電腦的服務標籤位在主機板上。在更換主機板後, 您必須在 BIOS 設定程式中輸入服務標籤。



註: 更換主機板會移除您使用 BIOS 設定程式對 BIOS 所做的變更。在更換主機板後您必須再次進行適當的變更。



註: 將纜線從主機板拔下之前, 請先記下連接器的位置, 以便在更換主機板後, 可以將它們連接回正確位置。

Prerequisites

- 1 Remove the [computer cover](#).
- 2 Remove the [front bezel](#).
- 3 Remove the [memory modules](#).
- 4 Remove the [wireless card](#).
- 5 Remove the [processor fan](#).
- 6 Remove the [heat sink](#).

Procedure

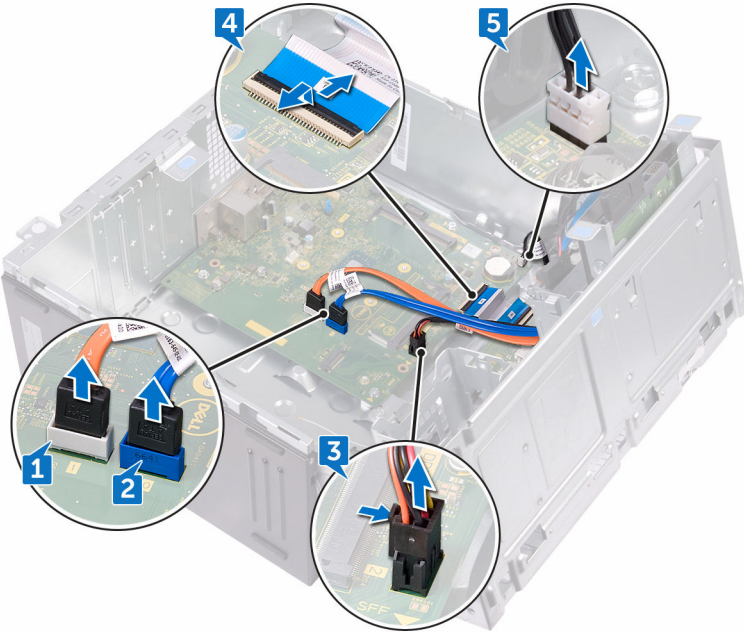


註: **Note the routing of all cables as you remove them so that you can reroute them correctly after you replace the system board. For information on system board connectors, see “[System board components](#)” .**

- 1 Disconnect the optical-drive data cable from the system board.
- 2 Disconnect the hard-drive data cable from the system board.
- 3 Disconnect the hard-drive and optical-drive power cable from the system board.
- 4 Disconnect the I/O-board cable from the system board.

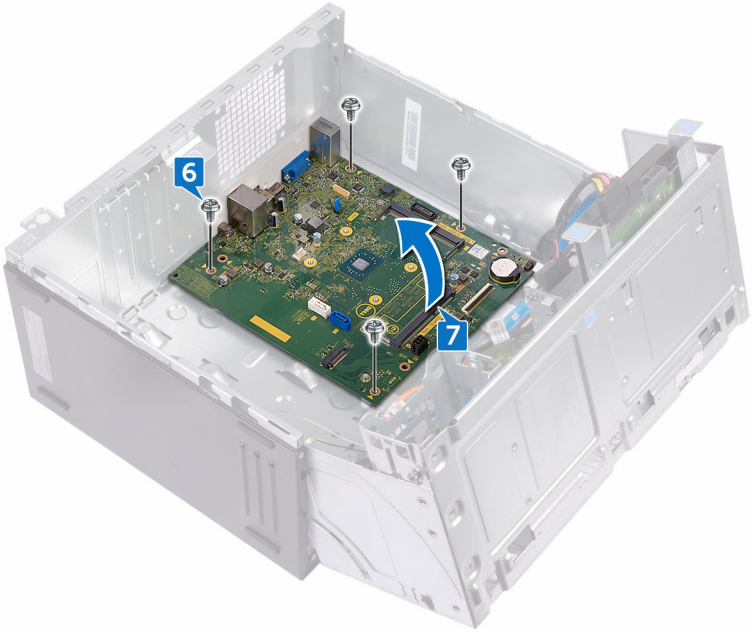


- 5 Disconnect the power-button cable from the system board.



- 6 Remove the four screws (#6 - 32 UNC 1/4") that secure the system board to the chassis.

- 7 Lift the system board at an angle and remove it from the chassis.



裝回主機板



警告: 拆裝電腦內部元件之前，請先閱讀電腦隨附的安全資訊，並按照[拆裝電腦內部元件之前](#)中的步驟進行操作。拆裝電腦內部元件之後，請按照[拆裝電腦內部元件之後](#)中的指示進行操作。如需更多有關安全性的資訊最佳實務，請參閱 **Regulatory Compliance (法規遵循)** 首頁 www.dell.com/regulatory_compliance。



註: 您電腦的服務標籤位在主機板上。在更換主機板後，您必須在 BIOS 設定程式中輸入服務標籤。



註: 更換主機板會移除您使用 BIOS 設定程式對 BIOS 所做的變更。在更換主機板後您必須再次進行適當的變更。

Procedure

- 1 Align the system board with the slots on the chassis and place the system board in position.
- 2 Replace the four screws (#6 – 32 UNC 1/4") that secure the system board to the chassis.
- 3 Route the optical-drive data cable, hard-drive data cable, hard-drive and optical-drive power cable, I/O-board cable, and power-button cable through their routing guides and connect the cables to their respective connectors on the system board.

Post-requisites

- 1 Replace the [heat sink](#).
- 2 Replace the [processor fan](#).
- 3 Replace the [wireless card](#).
- 4 Replace the [memory modules](#).
- 5 Replace the [front bezel](#).
- 6 Replace the [computer cover](#).

BIOS 設定程式

BIOS overview

The BIOS manages data flow between the computer's operating system and attached devices such as hard disk, video adapter, keyboard, mouse, and printer.

進入 BIOS 設定程式

- 1 開啟 (或重新啟動) 電腦。
- 2 在 POST 期間，當螢幕上顯示 DELL 徽標時，請注意觀察，等候顯示 F2 提示，然後立即按 F2 鍵。



註: F2 提示表示鍵盤已初始化。此提示顯示時間很短，所以您必須注意觀察，等候它的顯示，然後按 F2 鍵。如果您在出現 F2 提示前按 F2 鍵，該按鍵動作將無效。如果您等待過久，並且螢幕上已出現作業系統標誌，則請繼續等待，直到看到作業系統的桌面。然後，關閉電腦電源再試一次。

Clearing Forgotten Passwords



警告: 拆裝電腦內部元件之前，請先閱讀電腦隨附的安全資訊，並按照[拆裝電腦內部元件之前](#)中的步驟進行操作。拆裝電腦內部元件之後，請按照[拆裝電腦內部元件之後](#)中的指示進行操作。如需更多有關安全性的資訊最佳實務，請參閱 **Regulatory Compliance (法規遵循)** 首頁 www.dell.com/regulatory_compliance。

Prerequisites

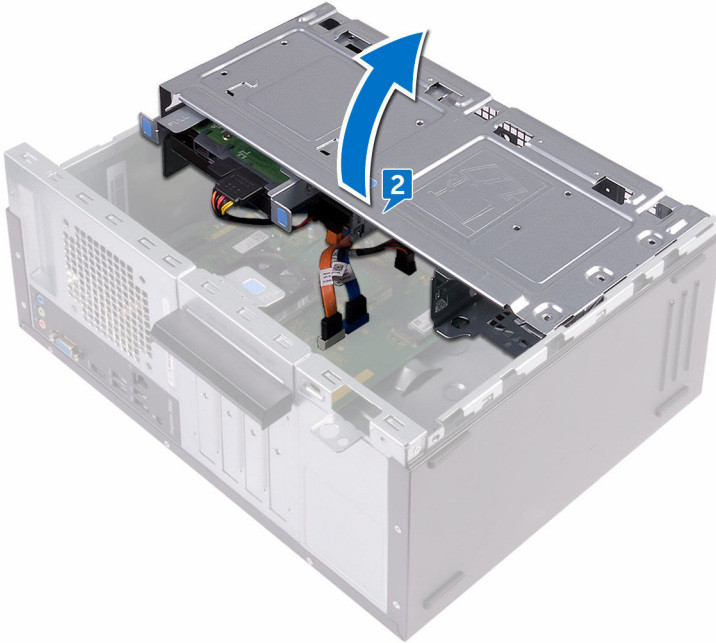
- 1 Remove the [computer cover](#).
- 2 Remove the [front bezel](#).

Procedure

- 1 Place the computer with the side-chassis facing up.



- 2 Lift and rotate the side-chassis away from the computer.

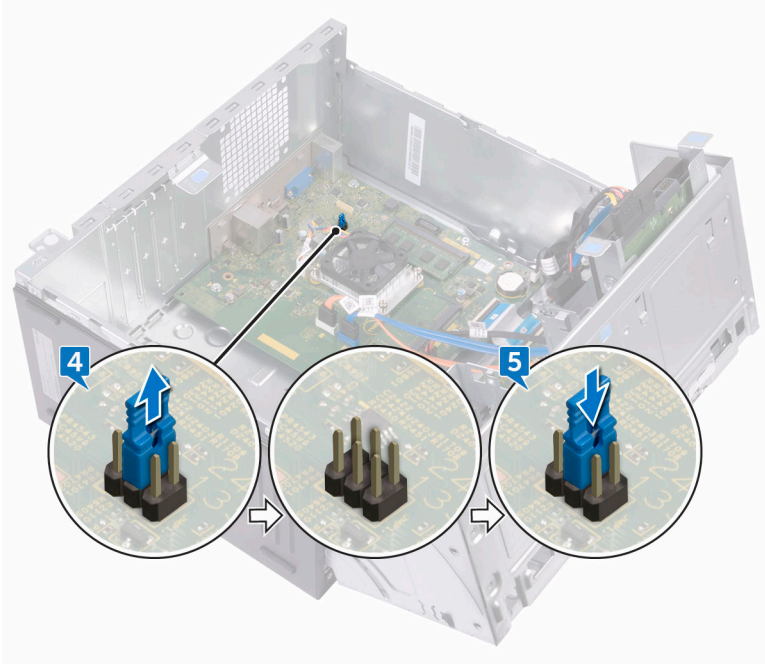


- 3 Locate the password jumper (PSWD) on the system board.

 **註: For more information on the location of the jumper, see “[System-board components](#)” .**

- 4 Remove the jumper plug from the password jumper-pins.

- 5 Wait for 5 seconds and then replace the jumper plug in its original location.



- 6 Rotate the side-chassis towards the computer until it snaps into place.

Post-requisites

- 1 Replace the [front bezel](#).
- 2 Replace the [computer cover](#).

Clearing CMOS Settings



警告: 拆裝電腦內部元件之前, 請先閱讀電腦隨附的安全資訊, 並按照[拆裝電腦內部元件之前](#)中的步驟進行操作。拆裝電腦內部元件之後, 請按照[拆裝電腦內部元件之後](#)中的指示進行操作。如需更多有關安全性的資訊最佳實務, 請參閱 **Regulatory Compliance (法規遵循)** 首頁 www.dell.com/regulatory_compliance。

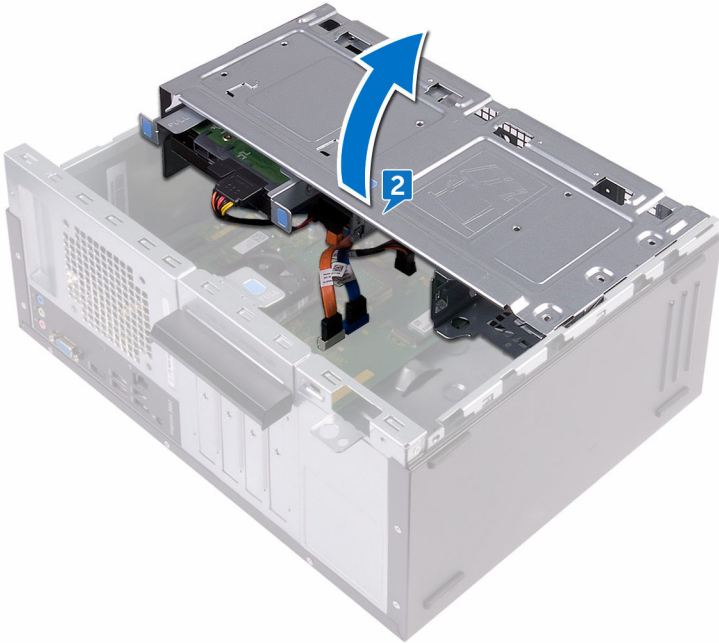


Prerequisites

- 1 Remove the [computer cover](#).
- 2 Remove the [front bezel](#).

Procedure

- 1 Place the computer with the side-chassis facing up.
- 2 Lift and rotate the side-chassis away from the computer.

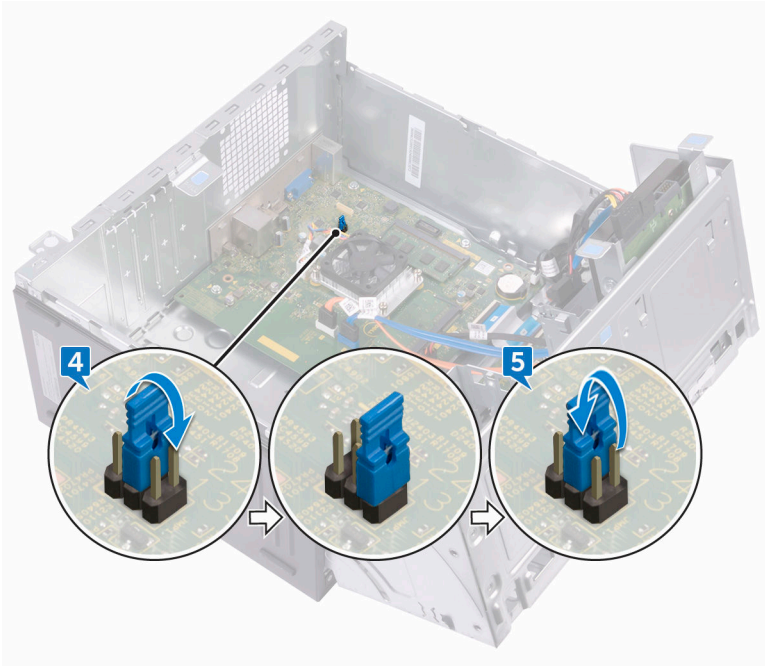


- 3 Locate the CMOS jumper (CMCL R2) on the system board.

 **註: For more information on the location of the jumper, see “[System-board components](#)” .**

- 4 Remove the jumper plug from the password jumper-pins (PSWD) and connect it to the CMOS jumper-pins.

- 5 Wait for 5 seconds and then replace the jumper plug to its original location.



- 6 Rotate the side-chassis towards the computer until it snaps into place.

Post-requisites

- 1 Replace the [front bezel](#).
- 2 Replace the [computer cover](#).



更新 BIOS

當有可用更新或更換主機板時，可能需要更新 BIOS。若要更新 BIOS，請執行以下作業：

- 1 開啟您的電腦。
- 2 請前往 www.dell.com/support。
- 3 按一下**產品支援**，輸入您電腦的服務標籤，然後按一下**提交**。



註：如果您沒有服務標籤，請使用自動偵測功能或手動瀏覽您的電腦型號。

- 4 按一下**驅動程式與下載** → **自行尋找**。
- 5 選擇您的電腦上安裝的作業系統。
- 6 向下捲動頁面，並展開 **BIOS**。
- 7 按一下**下載**以下載您電腦最新版本的 BIOS。
- 8 下載完成後，導覽至儲存 BIOS 更新檔的資料夾。
- 9 連按兩下 BIOS 更新檔案圖示，然後依照畫面上的指示進行。

獲得幫助和聯絡 Dell 公司

自助資源

您可以透過下列自助資源取得 Dell 產品和服務的資訊和協助。

表 2. 自助資源

有關 Dell 產品和服務的資訊

www.dell.com

DELL 說明和支援應用程式



「新手上路」應用程式



存取說明

在 Windows 搜尋，輸入 Help and Support，然後按下 Enter 鍵。

作業系統的線上說明

www.dell.com/support/windows
www.dell.com/support/linux

故障排除資訊、使用手冊、設定指示、產品規格、技術說明部落格、驅動程式、軟體更新等資源

www.dell.com/support

瞭解您的作業系統、設定和使用電腦、資料備份、診斷等。

請前往 www.dell.com/support/manuals 參閱 *我和我的 Dell*。

與 Dell 公司聯絡

若因銷售、技術支援或客戶服務問題要聯絡 Dell 公司，請參閱 www.dell.com/contactdell。



註: 服務的提供因國家/地區和產品而異，某些服務可能在您所在國家/地區並未提供。





註: 如果無法連線網際網路，則可以在購買發票、包裝單、帳單或 **Dell** 產品目錄中找到聯絡資訊。