




Inspiron 20 3000

Setup and Specifications

Computer Model: Inspiron 20-3064
Regulatory Model: W15B
Regulatory Type: W15B005



Notas, precauciones y avisos

-  **NOTA:** Una NOTA indica información importante que le ayuda a hacer un mejor uso de su producto.
 -  **PRECAUCIÓN:** Una PRECAUCIÓN indica la posibilidad de daños en el hardware o la pérdida de datos, y le explica cómo evitar el problema.
 -  **AVISO:** Un mensaje de AVISO indica el riesgo de daños materiales, lesiones corporales o incluso la muerte.
-

© 2016-2018 Dell Inc. or its subsidiaries. All rights reserved. Dell, EMC, and other trademarks are trademarks of Dell Inc. or its subsidiaries. Other trademarks may be trademarks of their respective owners.

2018 - 05

Rev. A01

Contents

Set up your computer.....	5
Vistas.....	11
Front.....	11
Left.....	12
Right.....	13
Back.....	14
Tilt.....	15
Easel stand.....	15
Pedestal stand.....	16
Especificaciones.....	18
Dimensions and weight.....	18
Easel stand (maximum dimensions).....	18
Pedestal stand (maximum dimensions).....	19
System information.....	20
Memory.....	20
Communications.....	20
Audio.....	21
Storage.....	21
Media-card reader.....	21
Display.....	22
Camera.....	22
Ports and connectors.....	22
Video.....	23
Power adapter.....	23
Stand.....	24
Computer environment.....	24

Getting help and contacting Dell..... 25
Self-help resources.....25
Contacting Dell.....25

Set up your computer



CAUTION: Place the computer on a soft and clean surface to avoid scratching the display.

1 Set up the stand.

Pedestal stand

a) Lift the stand riser.



Figure 1. Lifting the stand riser

b) Attach the base.



Figure 2. Attaching the base

c) Tighten the captive screw to secure the base to the stand riser.

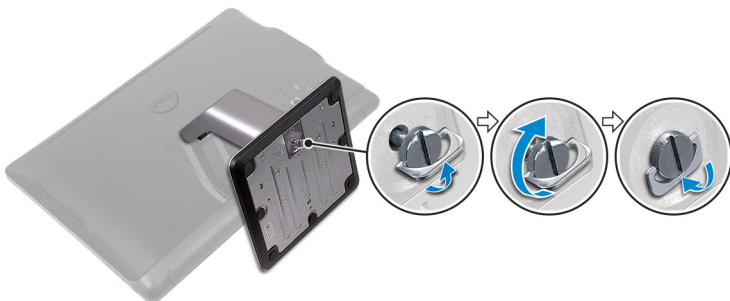


Figure 3. Tightening the captive screw to secure the base to the stand

Easel stand

Lift the stand.



- 2 Set up the keyboard and mouse.
See the documentation that shipped with the keyboard and mouse.
- 3 Route the power cable through the routing guide on the stand and connect the power adapter.

Easel stand



Figure 5. Connecting the power adapter with the easel stand

Pedestal stand



Figure 6. Connecting the power adapter with the pedestal stand

- 4 Press the power button.

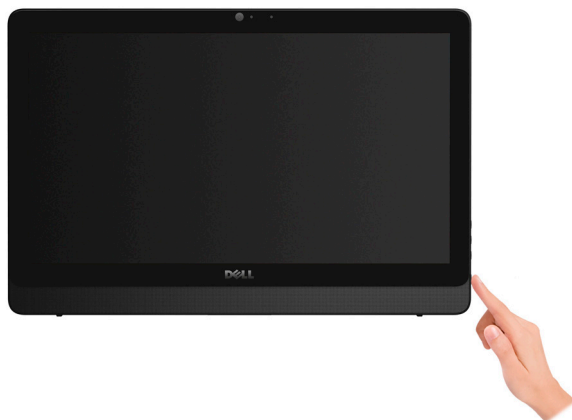


Figure 7. Pressing the power button

5 Finish operating system setup.

For Windows:

a) Connect to your network.

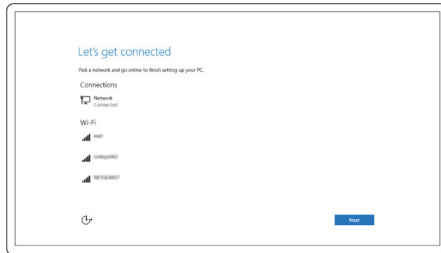


Figure 8. Connecting to your network

b) Sign in to your Microsoft account or create a local account.

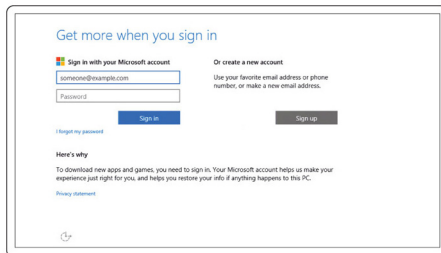


Figure 9. Signing in to your Microsoft account or create a local account

For Ubuntu:

Follow the instructions on the screen to finish setup.

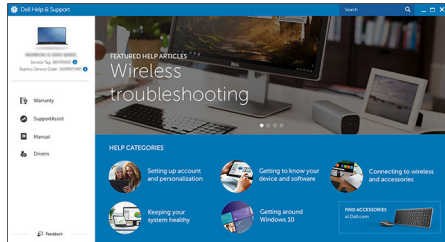
6 Locate Dell apps.

Table 1. Locate Dell apps



Register your computer

Dell Help & Support



SupportAssist — Check and update your computer

Vistas

Front

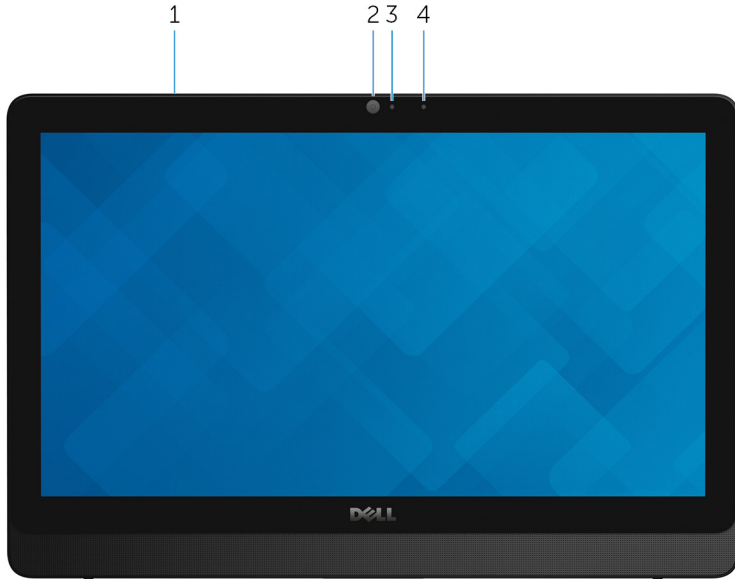


Figure 10. Front view

- 1 Microphone (for touchscreen model)**
Provides digital sound input for audio recording, voice calls, and so on.
- 2 Camera**
Enables you to video chat, capture photos, and record videos.
- 3 Camera-status light**
Turns on when the camera is in use.
- 4 Microphone (for non-touchscreen model)**
Provides digital sound input for audio recording, voice calls, and so on.

Left

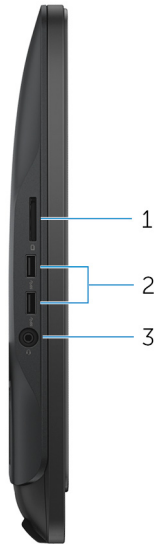


Figure 11. Left view

1 Media-card reader

Reads from and writes to media cards.

2 USB 3.0 ports (2)

Connect peripherals such as external storage devices and printers. Provides data transfer speeds up to 5 Gbps.

3 Headset port

Connect headphones or a headset (headphone and microphone combo).

Right



Figure 12. Right view

- 1 **Optical drive (optional)**
Reads from and writes to CDs and DVDs.
- 2 **Display-brightness control buttons (2)**
Press to increase or decrease the display brightness.
- 3 **Input-source selection button**
Press to select the video-input source.
- 4 **Power button**
Press to turn on the computer if it is turned off, in sleep state, or in hibernate state.
Press to put the computer in sleep state if it is turned on.
Press and hold for 4 seconds to force shut-down the computer.



NOTE: You can customize the power-button behavior in Power Options. For more information, see *Me and My Dell* at www.dell.com/support/manuals.

Back



Figure 13. Back view

1 Service Tag label

The Service Tag is a unique alphanumeric identifier that enables Dell service technicians to identify the hardware components in your computer and access warranty information.

2 Power-adapter port

Connect a power adapter to provide power to your computer and charge the battery.

3 Network port (with lights)

Connect an Ethernet (RJ45) cable from a router or a broadband modem for network or Internet access.

The two lights next to the connector indicate the connectivity status and network activity.

4 **USB 2.0 ports (2)**

Connect peripherals such as external storage devices and printers. Provides data transfer speeds up to 480 Mbps.

5 **HDMI-in port**

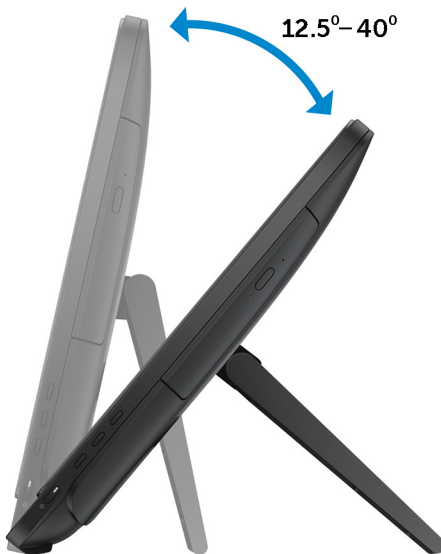
Connect a gaming console, Blu-ray player, or other HDMI-out enabled devices.

6 **Audio-out port**

Connect audio-output devices such as speakers, amplifiers, and so on.

Tilt

Easel stand



Pedestal stand





Especificaciones

Dimensions and weight

Height	317.64 mm (12.51 in)
Width	480.52 mm (18.92 in)
Depth	<ul style="list-style-type: none">• Touch screen – 33.10 mm (1.30 in)• Non-touch screen – 34.20 mm (1.35 in)
Weight without stand:	
Touch screen	4.21 kg (9.28 lb)
Non-touch screen	3.43 kg (7.56 lb)



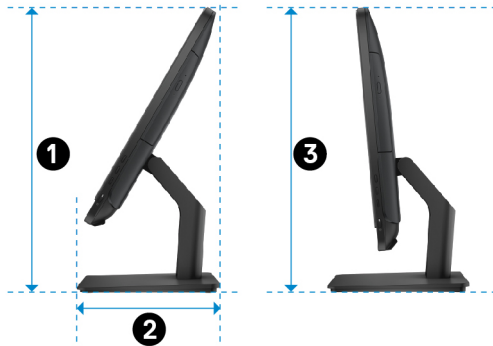
NOTE: The weight of your laptop varies depending on the configuration ordered and the manufacturing variability.

Easel stand (maximum dimensions)



- ① 314.70 mm (12.39 in)
- ② 137.00 mm (5.39 in)
- ③ 253.50 mm (9.98 in)
- ④ 265.73 mm (10.46 in)
- ⑤ 480.52 mm (18.92 in)

Pedestal stand (maximum dimensions)



- ① 383.02 mm (15.08 in)
- ② 205.00 mm (8.07 in)
- ③ 387.11 mm (15.24 in)

System information

Table 2. System information

Computer model	Inspiron 20-3060
Processor	<ul style="list-style-type: none">• 7th Generation Intel Core i3• 7th Generation Intel Core i5
System chipset	Integrated in processor

Memory

Table 3. Memory specifications

Slots	Two SODIMM slots
Type	DDR4
Speed	Up to 2400 MHz
Configurations supported	2 GB, 4 GB, and 8 GB

Communications

Table 4. Communication specifications

Ethernet	10/100 Mbps Ethernet controller integrated on system board
Wireless	<ul style="list-style-type: none">• Wi-Fi 802.11ac• Wi-Fi 802.11b/g/n• Bluetooth 4.0

Audio

Table 5. Audio specifications

Controller	Realtek ALC3661 Waves MaxxAudio Pro
Speakers	Two
Speaker Output	<ul style="list-style-type: none">· Average: 3 W· Peak: 3.50 W
Microphone	Digital-array microphones
Volume controls	Program menus

Storage

Table 6. Storage specifications

Interface	<ul style="list-style-type: none">· SATA 3 Gbps for optical drive· SATA 6 Gbps for hard drive
Hard drive	One 2.5-inch drive
Optical drive	One 9.5-mm DVD+/-RW drive (optional)

Media-card reader

Table 7. Media-card reader specifications

Type	One 4-in-1 slot
Cards supported	<ul style="list-style-type: none">· SD card· MultiMediaCard (MMC)· SD Extended Capacity (SDXC) card· SD High Capacity (SDHC) card

Display

Table 8. Display specifications

Type	<ul style="list-style-type: none">· 19.5-inch HD+ touch screen· 19.5-inch HD+ non-touch screen
Resolution (maximum)	1600 x 900
Pixel pitch	0.2745 mm x 0.2745 mm
Height	263 mm (10.35 in)
Width	452 mm (17.80 in)
Diagonal	495.30 mm (19.50 in)
Refresh rate	60 Hz
Controls	Brightness can be controlled through the display-brightness increase/decrease button

Camera

Table 9. Camera specifications

Resolution	<ul style="list-style-type: none">· Still image: 0.92 megapixels· Video: 1280 x 720 at 30 FPS (maximum)
Diagonal viewing angle	74 degrees

Ports and connectors

Table 10. Ports and connectors specifications

External	
Network	One RJ45 port
USB	<ul style="list-style-type: none">· Two USB 2.0 ports· Two USB 3.0 ports

External

Audio/Video	<ul style="list-style-type: none">• One HDMI-in port• One audio line-out port• One headset port
-------------	---

Table 11. Ports and connectors specifications

Internal

M.2 card	One M.2 slot for WLAN and Bluetooth combo card
----------	--

Video

Table 12. Video specifications

	Integrated	Discrete
Controller	Intel HD Graphics 620	Nvidia GeForce 920M
Memory	Shared system memory	2 GB GDDR5

Power adapter

Table 13. Power adapter specifications

Type	65 W	90 W
Input current (maximum)	1.70 A	2.50 A
Output current (continuous)	3.34 A	4.62 A
Input Voltage	100 VAC to 240 VAC	
Input frequency	50 Hz to 60 Hz	
Rated output voltage	19.50 VDC	
Temperature range: Operating	0°C to 40°C (32°F to 104°F)	

Type	65 W	90 W
Temperature range:	-40°C to 70°C (-40°F to 158°F)	
Storage		

Stand

Table 14. Stand

	Easel	Pedestal
Height	174.80 mm (6.88 in)	184.17 mm (7.25 in)
Width	120 mm (4.72 in)	204.98 mm (8.07 in)
Depth	22.48 mm (0.89 in)	13.90 mm (0.55 in)
Weight	0.56 kg (1.23 lb)	1.50 kg (3.31 lb)

Computer environment

Airborne contaminant level: G1 as defined by ISA-S71.04-1985

Table 15. Computer environment

	Operating	Storage
Temperature range	0°C to 35°C (32°F to 95°F)	-40°C to 65°C (-40°F to 149°F)
Relative humidity (maximum)	10% to 90% (non-condensing)	0% to 95% (non-condensing)
Vibration (maximum)*	0.66 GRMS	1.30 GRMS
Shock (maximum)	110 G [†]	160 G [‡]
Altitude (maximum)	-15.2 m to 3048 m (-50 ft to 10,000 ft)	-15.2 m to 10,668 m (-50 ft to 35,000 ft)

* Measured using a random vibration spectrum that simulates user environment.

† Measured using a 2 ms half-sine pulse when the hard drive is in use.

‡ Measured using a 2 ms half-sine pulse when the hard-drive head is in parked position.

Getting help and contacting Dell

Self-help resources

You can get information and help on Dell products and services using these self-help resources:

Table 16. Self-help resources

Information about Dell products and services

www.dell.com

Dell Help & Support app



Get started app



Accessing help in Windows 10

In Windows search, type **Help and Support**, and press **Enter**.

Online help for operating system

www.dell.com/support/windows

www.dell.com/support/linux

Troubleshooting information, user manuals, setup instructions, product specifications, technical help blogs, drivers, software updates, and so on

www.dell.com/support

Learn about your operating system, setting up and using your computer, data backup, diagnostics, and so on.

See *Me and My Dell* at www.dell.com/support/manuals.

Contacting Dell

To contact Dell for sales, technical support, or customer service issues, see www.dell.com/contactdell.



NOTE: Availability varies by country and product, and some services may not be available in your country.



NOTE: If you do not have an active internet connection, you can find contact information on your purchase invoice, packing slip, bill, or Dell product catalog.