

Inspiron 20 3000

Setup and Specifications

Notes, cautions, and warnings

 **NOTE:** A NOTE indicates important information that helps you make better use of your product.

 **CAUTION:** A CAUTION indicates either potential damage to hardware or loss of data and tells you how to avoid the problem.

 **WARNING:** A WARNING indicates a potential for property damage, personal injury, or death.

© 2016-2019 Dell Inc. or its subsidiaries. All rights reserved. Dell, EMC, and other trademarks are trademarks of Dell Inc. or its subsidiaries. Other trademarks may be trademarks of their respective owners.

1 Set up your computer.....	4
2 Views.....	7
Front.....	7
Left.....	8
Right.....	8
Back.....	9
Tilt.....	10
3 Specifications.....	12
Dimensions and weight.....	12
System information.....	13
Memory.....	13
Communications.....	13
Audio.....	14
Storage.....	14
Media-card reader.....	14
Display.....	14
Camera.....	15
Ports and connectors.....	15
Video.....	15
Power adapter.....	15
Stand.....	16
Computer environment.....	16
4 Getting help and contacting Dell.....	17

Set up your computer

 **CAUTION:** Place the computer on a soft and clean surface to avoid scratching the display.

1. Set up the stand.

Easel stand - Lift the stand riser.



Pedestal stand

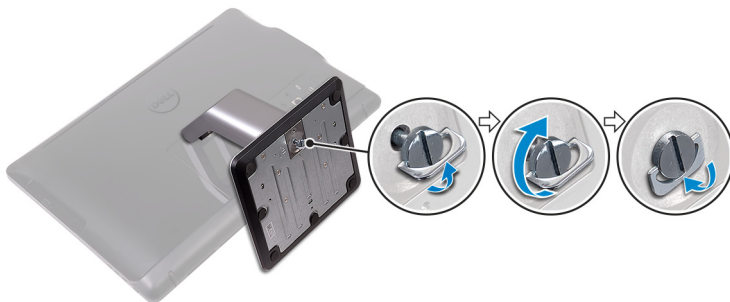
- a) Lift the stand riser.



- b) Attach the base.




- c) Tighten the captive screw to secure the base to the stand riser.



2. Connect the keyboard and mouse.

 **NOTE:** For setup instructions, see the documentation shipped with the keyboard and mouse.

3. Connect the power adapter.

 **WARNING:** Route the power-adaptor cable through the routing guide on the stand to avoid potential damage to the power adapter and to avoid the unexpected system power-off when the stand is moved to a different orientation.

Easel stand



Pedestal stand



4. Press the power button.



5. Finish operating system setup.

For Windows:

- a) Connect to your network.

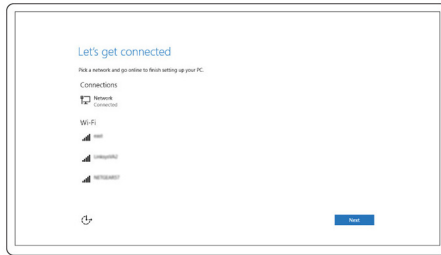


Figure 1. Connecting to your network

b) Sign in to your Microsoft account or create a local account.

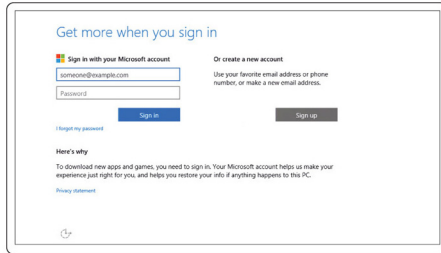


Figure 2. Signing in to your Microsoft account or create a local account

For Ubuntu:

Follow the instructions on the screen to finish setup.

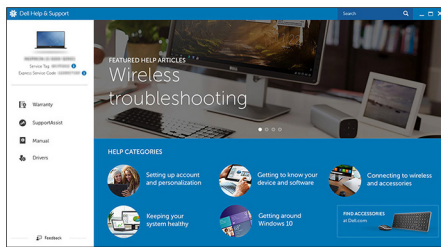
6. Locate Dell apps.

Table 1. Locate Dell apps



Register your computer

Dell Help & Support



SupportAssist — Check and update your computer

Front

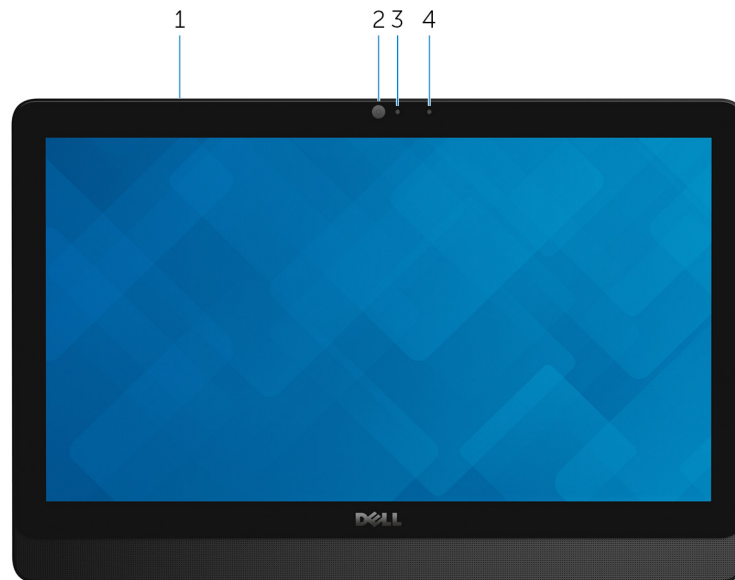


Figure 3. Front view

- 1. Microphone (for touchscreen model)**
Provides digital sound input for audio recording, voice calls, and so on.
- 2. Camera**
Enables you to video chat, capture photos, and record videos.
- 3. Camera-status light**
Turns on when the camera is in use.
- 4. Microphone (for non-touchscreen model)**
Provides digital sound input for audio recording, voice calls, and so on.

Left

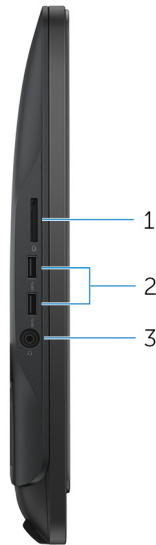


Figure 4. Left view

1. **Media-card reader**

Reads from and writes to media cards.

2. **USB 3.0 ports (2)**

Connect peripherals such as external storage devices and printers. Provides data transfer speeds up to 5 Gbps.

3. **Headset port**

Connect headphones or a headset (headphone and microphone combo).

Right



Figure 5. Right view

1. **Optical drive (optional)**

Reads from and writes to CDs and DVDs.

2. **Display-brightness control buttons (2)**

Press to increase or decrease the display brightness.

3. Input-source selection button

Press to select the video-input source.

4. Power button

Press to turn on the computer if it is turned off, in sleep state, or in hibernate state.

Press to put the computer in sleep state if it is turned on.

Press and hold for 4 seconds to force shut-down the computer.

NOTE: You can customize the power-button behavior in Power Options. For more information, see *Me and My Dell* at www.dell.com/support/manuals.

Back



Figure 6. Back view

1. Service Tag label

The Service Tag is a unique alphanumeric identifier that enables Dell service technicians to identify the hardware components in your computer and access warranty information.

2. Power-adapter port

Connect a power adapter to provide power to your computer and charge the battery.

3. Network port (with lights)

Connect an Ethernet (RJ45) cable from a router or a broadband modem for network or Internet access.

The two lights next to the connector indicate the connectivity status and network activity.

4. USB 2.0 ports (2)

Connect peripherals such as external storage devices and printers. Provides data transfer speeds up to 480 Mbps.

5. HDMI-in port

Connect a gaming console, Blu-ray player, or other HDMI-out enabled devices.

6. Audio-out port

Connect audio-output devices such as speakers, amplifiers, and so on.

Tilt

Easel stand



Pedestal stand





Specifications

Dimensions and weight

Height	317.64 mm (12.51 in)
Width	480.52 mm (18.92 in)
Depth	<ul style="list-style-type: none"> · Touch screen – 33.10 mm (1.30 in) · Non-touch screen – 34.20 mm (1.35 in)
Weight without stand:	
Touch screen	4.21 kg (9.28 lb)
Non-touch screen	3.43 kg (7.56 lb)

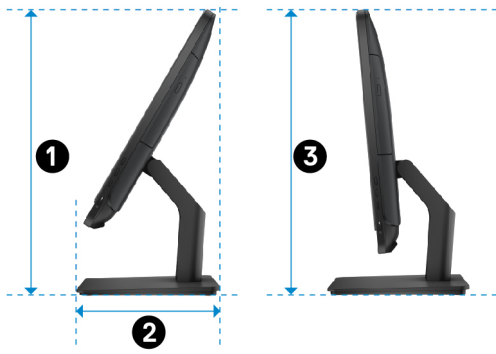
i **NOTE:** The weight of your laptop varies depending on the configuration ordered and the manufacturing variability.

Easel stand (maximum dimensions)



1	314.70 mm (12.39 in)
2	137.00 mm (5.39 in)
3	253.50 mm (9.98 in)
4	265.73 mm (10.46 in)
5	480.52 mm (18.92 in)

Pedestal stand (maximum dimensions)



1	383.02 mm (15.08 in)
2	205.00 mm (8.07 in)
3	387.11 mm (15.24 in)

System information

Table 2. System information

Computer model	Inspiron 20-3064
Processor	<ul style="list-style-type: none">7th Generation Intel Core i37th Generation Intel Core i5
System chipset	Integrated in processor

Memory

Table 3. Memory specifications

Slots	Two SODIMM slots
Type	DDR4
Speed	Up to 2400 MHz
Configurations supported	2 GB, 4 GB, and 8 GB

Communications

Table 4. Communication specifications

Ethernet	10/100 Mbps Ethernet controller integrated on system board
Wireless	<ul style="list-style-type: none">Wi-Fi 802.11acWi-Fi 802.11b/g/nBluetooth 4.0

Audio

Table 5. Audio specifications

Controller	Realtek ALC3661 Waves MaxxAudio Pro
Speakers	Two
Speaker Output	<ul style="list-style-type: none">• Average: 3 W• Peak: 3.50 W
Microphone	Digital-array microphones
Volume controls	Program menus

Storage

Table 6. Storage specifications

Interface	<ul style="list-style-type: none">• SATA 3 Gbps for optical drive• SATA 6 Gbps for hard drive
Hard drive	One 2.5-inch drive
Optical drive	One 9.5-mm DVD+/-RW drive (optional)

Media-card reader

Table 7. Media-card reader specifications

Type	One 4-in-1 slot
Cards supported	<ul style="list-style-type: none">• SD card• MultiMediaCard (MMC)• SD Extended Capacity (SDXC) card• SD High Capacity (SDHC) card

Display

Table 8. Display specifications

Type	<ul style="list-style-type: none">• 19.5-inch HD+ touch screen• 19.5-inch HD+ non-touch screen
Resolution (maximum)	1600 x 900
Pixel pitch	0.2745 mm x 0.2745 mm
Height	263 mm (10.35 in)
Width	452 mm (17.80 in)
Diagonal	495.30 mm (19.50 in)
Refresh rate	60 Hz
Controls	Brightness can be controlled through the display-brightness increase/decrease button

Camera

Table 9. Camera specifications

Resolution	<ul style="list-style-type: none">• Still image: 0.92 megapixels• Video: 1280 x 720 at 30 FPS (maximum)
Diagonal viewing angle	74 degrees

Ports and connectors

Table 10. Ports and connectors specifications

External	
Network	One RJ45 port
USB	<ul style="list-style-type: none">• Two USB 2.0 ports• Two USB 3.0 ports
Audio/Video	<ul style="list-style-type: none">• One HDMI-in port• One audio line-out port• One headset port

Table 11. Ports and connectors specifications

Internal	
M.2 card	One M.2 slot for WLAN and Bluetooth combo card

Video

Table 12. Video specifications

	Integrated	Discrete
Controller	Intel HD Graphics 620	Nvidia GeForce 920M
Memory	Shared system memory	2 GB GDDR5

Power adapter

Table 13. Power adapter specifications

Type	65 W	90 W
Input current (maximum)	1.70 A	2.50 A
Output current (continuous)	3.34 A	4.62 A
Input Voltage	100 VAC to 240 VAC	
Input frequency	50 Hz to 60 Hz	
Rated output voltage	19.50 VDC	
Temperature range: Operating	0°C to 40°C (32°F to 104°F)	
Temperature range: Storage	-40°C to 70°C (-40°F to 158°F)	

Stand

Table 14. Stand

	Easel	Pedestal
Height	174.80 mm (6.88 in)	184.17 mm (7.25 in)
Width	120 mm (4.72 in)	204.98 mm (8.07 in)
Depth	22.48 mm (0.89 in)	13.90 mm (0.55 in)
Weight	0.56 kg (1.23 lb)	1.50 kg (3.31 lb)

Computer environment

Airborne contaminant level: G1 as defined by ISA-S71.04-1985

Table 15. Computer environment

	Operating	Storage
Temperature range	0°C to 35°C (32°F to 95°F)	-40°C to 65°C (-40°F to 149°F)
Relative humidity (maximum)	10% to 90% (non-condensing)	0% to 95% (non-condensing)
Vibration (maximum)*	0.66 GRMS	1.30 GRMS
Shock (maximum)	110 G [†]	160 G [‡]
Altitude (maximum)	-15.2 m to 3048 m (-50 ft to 10,000 ft)	-15.2 m to 10,668 m (-50 ft to 35,000 ft)

* Measured using a random vibration spectrum that simulates user environment.

† Measured using a 2 ms half-sine pulse when the hard drive is in use.



‡ Measured using a 2 ms half-sine pulse when the hard-drive head is in parked position.

Getting help and contacting Dell

Self-help resources


You can get information and help on Dell products and services using these self-help resources:


Table 16. Self-help resources

Information about Dell products and services	www.dell.com
Dell Help & Support app	
Get started app	
Accessing help in Windows 10	In Windows search, type Help and Support , and press Enter .
Online help for operating system	www.dell.com/support/windows www.dell.com/support/linux
Troubleshooting information, user manuals, setup instructions, product specifications, technical help blogs, drivers, software updates, and so on	www.dell.com/support
Learn about your operating system, setting up and using your computer, data backup, diagnostics, and so on.	See <i>Me and My Dell</i> at www.dell.com/support/manuals .

Contacting Dell

To contact Dell for sales, technical support, or customer service issues, see www.dell.com/contactdell.

 **NOTE: Availability varies by country and product, and some services may not be available in your country.**

 **NOTE: If you do not have an active internet connection, you can find contact information on your purchase invoice, packing slip, bill, or Dell product catalog.**