

Inspiron 15

3000 Series

Service Manual



Napomene, mere opreza i upozorenja

 **NAPOMENA** NAPOMENA ukazuje na važne informacije koje će vam pomoći da iskoristite računar na bolji način.

 **OPREZ** OPREZ ukazuje na potencijalno oštećenje hardvera ili gubitak podataka i saopštava vam kako da izbegnete problem.

 **UPOZORENJE** UPOZORENJE ukazuje na potencijalno oštećenje imovine, telesne povrede i smrtni ishod.

Autorsko pravo © 2015 Dell Inc. Sva prava zadržana. Ovaj proizvod je zaštićen zakonima o zaštiti autorskih prava i intelektualnoj svojini u SAD i međunarodnim zakonima. Dell™ i logotip Dell su zaštitni znaci kompanije Dell Inc. u Sjedinjenim Američkim Državama i/ili drugim pravnim nadležnostima. Svi ostali znaci i imena ovde navedeni mogu biti zaštitni znaci svojih kompanija.

1 Pre rada u unutrašnjosti računara.....	7
Pre početka rada	7
Bezbednosna uputstva.....	7
Preporučeni alati.....	8
2 After working inside your tablet.....	9
3 Uklanjanje baterije.....	10
Procedure.....	10
4 Postavljanje baterije.....	11
Procedura.....	11
5 Uklanjanje osnovne ploče.....	12
Pripremni koraci.....	12
Procedura.....	12
6 Zamenite osnovnu ploču.....	13
Procedura.....	13
Dopunski koraci.....	13
7 Uklanjanje čvrstog diska.....	14
Pripremni koraci.....	14
Procedure.....	14
8 Postavljanje čvrstog diska.....	16
Procedura.....	16
Dopunski koraci.....	16
9 Uklanjanje memorijskih modula.....	17
Pripremni koraci.....	17
Procedure.....	17
10 Postavljanje memorijskih modula.....	18
Procedure.....	18
Dopunski koraci.....	18
11 Uklanjanje bežične kartice.....	19
Pripremni koraci.....	19
Procedure.....	19
12 Postavljanje bežične kartice.....	20
Procedura.....	20

Dopunski koraci.....	20
13 Uklanjanje tastature.....	21
Pripremni koraci.....	21
Procedura.....	21
14 Postavljanje tastature.....	23
Procedura.....	23
Dopunski koraci.....	23
15 Uklanjanje oslonca za dlanove.....	24
Prerequisites.....	24
Procedure.....	24
16 Postavljanje oslonca za dlanove.....	27
Procedura.....	27
Dopunski koraci.....	27
17 Uklanjanje table osetljive na dodir.....	28
Prerequisites.....	28
Procedure.....	28
18 Postavljanje table osetljive na dodir.....	30
Procedura.....	30
Dopunski koraci.....	30
19 Uklanjanje ploče dugmeta za napajanje.....	31
Prerequisites.....	31
Procedure.....	31
20 Postavljanje ploče dugmeta za napajanje.....	33
Procedura.....	33
Dopunski koraci.....	33
21 Uklanjanje zvučnika.....	34
Prerequisites.....	34
Procedure.....	34
22 Postavljanje zvučnika.....	36
Procedura.....	36
Dopunski koraci.....	36
23 Uklanjanje U/I ploče.....	37
Prerequisites.....	37
Procedure.....	37
24 Postavljanje U/I ploče.....	38
Procedura.....	38

Dopunski koraci.....	38
25 Uklanjanje matične ploče.....	39
Prerequisites.....	39
Procedure.....	39
26 Postavljanje matične ploče.....	42
Procedura.....	42
Dopunski koraci.....	42
27 Uklanjanje dugmaste baterije.....	43
Prerequisites.....	43
Procedure.....	43
28 Postavljanje dugmaste baterije.....	44
Procedura.....	44
Post-requisites.....	44
29 Uklanjanje rashladnog elementa.....	45
Prerequisites.....	45
Procedure.....	45
30 Postavljanje rashladnog elementa.....	47
Procedura.....	47
Dopunski koraci.....	47
31 Uklanjanje ventilatora.....	48
Prerequisites.....	48
Procedure.....	48
32 Postavljanje ventilatora.....	50
Procedura.....	50
Post-requisites.....	50
33 Uklanjanje sklopa ekrana.....	51
Prerequisites.....	51
Procedura.....	51
34 Postavljanje sklopa ekrana.....	53
Procedura.....	53
Dopunski koraci.....	53
35 Uklanjanje porta adaptera za napajanje.....	54
Prerequisites.....	54
Procedura.....	54
36 Postavljanje porta adaptera za napajanje.....	55
Procedura.....	55

Dopunski koraci.....	55
37 Uklanjanje okna ekrana.....	56
Prerequisites.....	56
Procedura.....	56
38 Postavljanje okna ekrana.....	57
Procedura.....	57
Dopunski koraci.....	57
39 Uklanjanje ploče ekrana.....	58
Prerequisites.....	58
Procedura.....	58
40 Postavljanje ploče ekrana.....	60
Procedura.....	60
Dopunski koraci.....	60
41 Uklanjanje kamere.....	61
Prerequisites.....	61
Procedura.....	61
42 Postavljanje kamere.....	63
Dopunski koraci.....	63
Procedura.....	63
43 Uklanjanje zglobova ekrana.....	64
Prerequisites.....	64
Procedura.....	64
44 Postavljanje zglobova ekrana.....	66
Procedura.....	66
Dopunski koraci.....	66
45 Ažuriranje BIOS-a.....	67
46 Dobijanje pomoći i kontaktiranje kompanije Dell.....	68

Pre rada u unutrašnjosti računara

NAPOMENA The images in this document may differ from your computer depending on the configuration you ordered.

Teme:

- Pre početka rada
- Bezbednosna uputstva
- Preporučeni alati

Pre početka rada

1. Sačuvajte i zatvorite sve otvorene datoteke i zatvorite sve otvorene programe.
2. Isključite računar.
 - Windows 10: Kliknite ili kucnite na **Početak** > **Napajanje** > **Isključi**.
 - Windows 8.1: Na ekranu **Početak**, kliknite ili kucnite na ikonu za napajanje > **Isključi**.
 - Windows 7: Kliknite ili kucnite na **Start** > **Isključi**.

NAPOMENA Ako koristite različite operativne sisteme, pogledajte dokumentaciju vašeg operativnog sistema u vezi uputstva za isključivanje.

3. Isključite računar i sve priključene uređaje iz pripadajućih električnih utičnica.
4. Odspojite sve kablove, kao što su kablovi telefona, kablovi za mrežu itd, sa vašeg računara.
5. Odspojite sve priključene uređaje i periferne uređaje, kao što su tastatura, miš, monitor, itd, sa vašeg računara.
6. Uklonite medijsku karticu ili optički disk iz računara, ako je moguće.

Bezbednosna uputstva

Koristite sledeće bezbednosne smernice kako biste zaštitili računar od mogućih oštećenja i osigurali vašu ličnu bezbednost.

NAPOMENA Before working inside your computer, read the safety information that shipped with your computer. For more safety best practices, see the Regulatory Compliance home page at www.dell.com/regulatory_compliance.

NAPOMENA Disconnect all power sources before opening the computer cover or panels. After you finish working inside the computer, replace all covers, panels, and screws before connecting to the power source.

OPREZ To avoid damaging the computer, ensure that the work surface is flat and clean.

OPREZ To avoid damaging the components and cards, handle them by their edges and avoid touching pins and contacts.

OPREZ You should only perform troubleshooting and repairs as authorized or directed by the Dell technical assistance team. Damage due to servicing that is not authorized by Dell is not covered by your warranty. See the safety instructions that shipped with the product or at www.dell.com/regulatory_compliance.

OPREZ Before touching anything inside your computer, ground yourself by touching an unpainted metal surface, such as the metal at the back of the computer. While you work, periodically touch an unpainted metal surface to dissipate static electricity, which could harm internal components.

OPREZ When you disconnect a cable, pull on its connector or on its pull tab, not on the cable itself. Some cables have connectors with locking tabs or thumb-screws that you must disengage before disconnecting the cable. When disconnecting cables, keep them evenly aligned to avoid bending any connector pins. When connecting cables, ensure that the ports and connectors are correctly oriented and aligned.

 **OPREZ** Press and eject any installed card from the media-card reader.

Preporučeni alati

Za procedure u ovom dokumentu mogu se zahtevati sledeći alati:

- Phillips odvrtlač
- Plastična olovka

After working inside your tablet

 **CAUTION:** Leaving stray or loose screws inside your computer may severely damage your computer.

1. Replace all screws and ensure that no stray screws remain inside your tablet.
2. Connect any external devices, peripherals, and cables you removed before working on your tablet.
3. Replace any media cards, discs, and any other parts that you removed before working on your tablet.
4. Connect your tablet and all attached devices to their electrical outlets.
5. Turn on your tablet.

Uklanjanje baterije

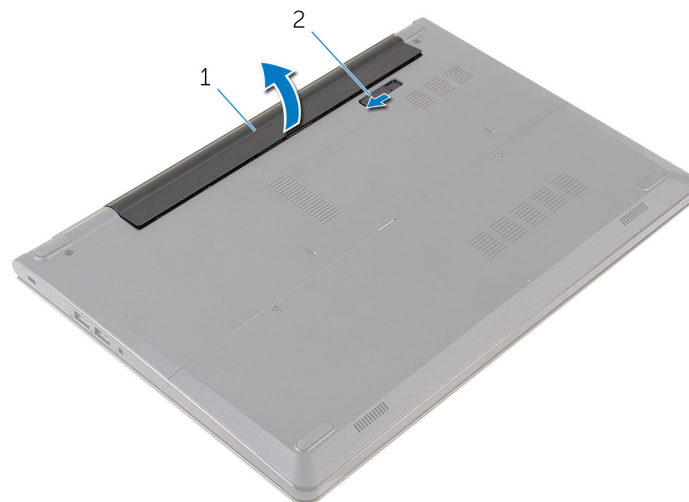
ⓘ NAPOMENA Before working inside your computer, read the safety information that shipped with your computer and follow the steps in [Before working inside your computer](#). After working inside your computer, follow the instructions in [After working inside your computer](#). For more safety best practices, see the Regulatory Compliance home page at www.dell.com/regulatory_compliance.

Teme:

- [Procedure](#)

Procedure

1. Close the display and turn the computer over.
2. Slide the battery-release latch to the unlock position.
3. Lift the battery at an angle and remove the battery from the battery bay.



1. battery

2. battery-release latch

4. Turn the computer over, open the display, and press the power button for five seconds to ground the system board.

Postavljanje baterije

ⓘ NAPOMENA Before working inside your computer, read the safety information that shipped with your computer and follow the steps in [Before working inside your computer](#). After working inside your computer, follow the instructions in [After working inside your computer](#). For more safety best practices, see the Regulatory Compliance home page at www.dell.com/regulatory_compliance.

Teme:

- [Procedura](#)

Procedura

Poravnajte držače na bateriji sa otvorima na ležištu za bateriju i utisnite bateriju u ležište.

ⓘ NAPOMENA Ako je baterija ispravno postavljena, reza za otpuštanje baterije se vraća u zaključani položaj.

Uklanjanje osnovne ploče

NAPOMENA Before working inside your computer, read the safety information that shipped with your computer and follow the steps in [Before working inside your computer](#). After working inside your computer, follow the instructions in [After working inside your computer](#). For more safety best practices, see the Regulatory Compliance home page at www.dell.com/regulatory_compliance.

Teme:

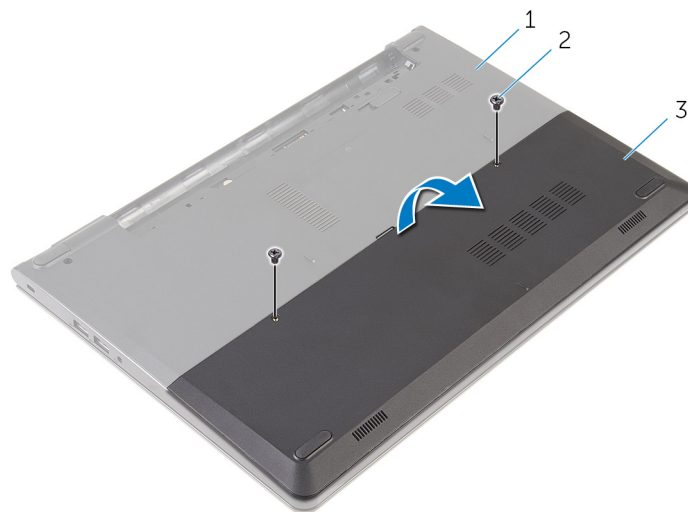
- [Pripremni koraci](#)
- [Procedura](#)

Pripremni koraci

Uklonite bateriju.

Procedura

1. Uklonite zavrtnje kojima je osnovna ploča pričvršćena za osnovu računara.
2. Vrhovima prstiju nežno odvojite osnovnu ploču sa osnove računara.



1. osnova računara
3. osnovna ploča

2. zavrtnji (2)

Zamenite osnovnu ploču

ⓘ NAPOMENA Before working inside your computer, read the safety information that shipped with your computer and follow the steps in [Before working inside your computer](#). After working inside your computer, follow the instructions in [After working inside your computer](#). For more safety best practices, see the Regulatory Compliance home page at www.dell.com/regulatory_compliance.

Teme:

- [Procedura](#)
- [Dopunski koraci](#)

Procedura

1. Gurnite držače na osnovnoj ploči u otvore na osnovi računara i utisnite osnovnu ploču u ležište.
2. Postavite zavrtnje kojima je osnovna ploča pričvršćena za osnovu računara.

Dopunski koraci

Postavite [bateriju](#).

Uklanjanje čvrstog diska

ⓘ NAPOMENA Before working inside your computer, read the safety information that shipped with your computer and follow the steps in [Before working inside your computer](#). After working inside your computer, follow the instructions in [After working inside your computer](#). For more safety best practices, see the Regulatory Compliance home page at www.dell.com/regulatory_compliance.

⚠ OPREZ Hard drives are fragile. Exercise care when handling the hard drive.

⚠ OPREZ To avoid data loss, do not remove the hard drive while the computer is in sleep or on state.

Teme:

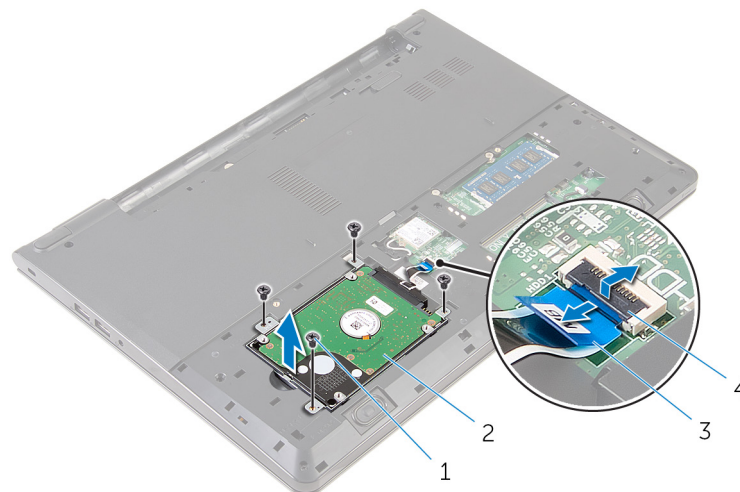
- [Pripremni koraci](#)
- [Procedure](#)

Pripremni koraci

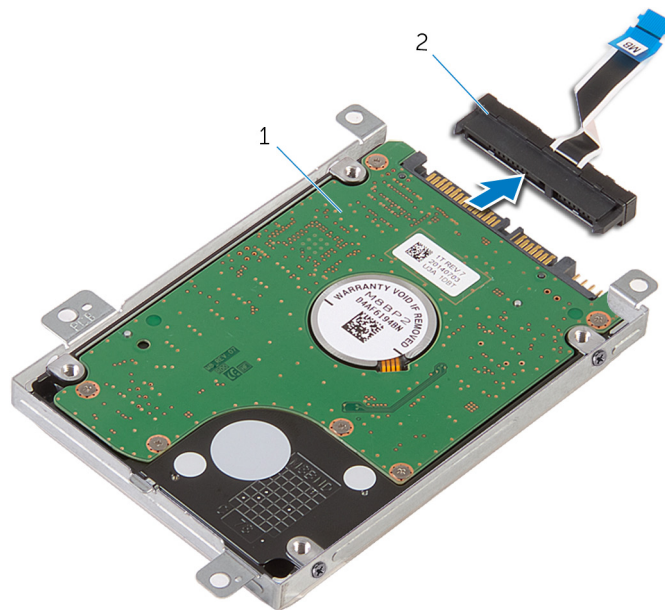
1. Uklonite [bateriju](#).
2. Uklonite [osnovnu ploču](#).

Procedure

1. Remove the screws that secure the hard-drive assembly to the computer base.
2. Lift the latch and disconnect the hard-drive cable from the system board.
3. Lift the hard-drive assembly off the computer base.



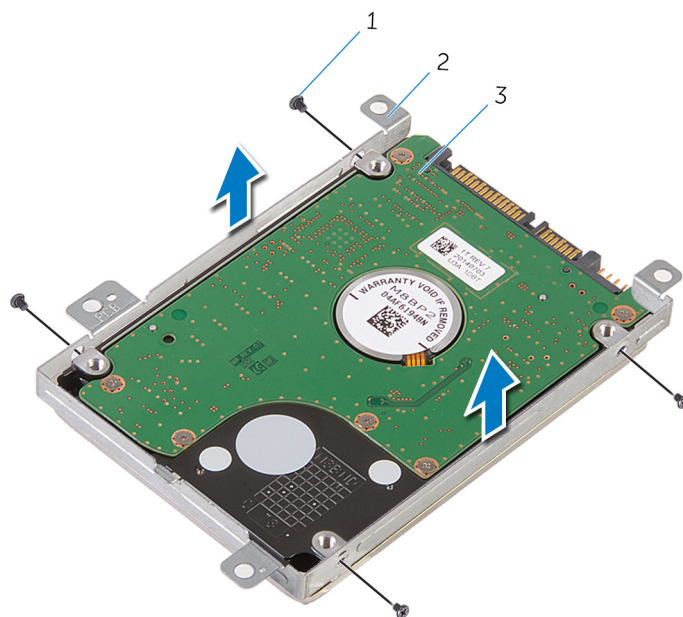
- | | |
|---------------------|------------------------|
| 1. screws (4) | 2. hard-drive assembly |
| 3. hard-drive cable | 4. latch |
4. Disconnect the interposer from the hard drive.



1. hard-drive assembly

2. interposer

5. Remove the screws that secure the hard-drive bracket to the hard drive and lift the hard-drive bracket off the hard drive.



1. screws (4)

2. hard-drive bracket

3. hard drive

Postavljanje čvrstog diska

ⓘ NAPOMENA Before working inside your computer, read the safety information that shipped with your computer and follow the steps in [Before working inside your computer](#). After working inside your computer, follow the instructions in [After working inside your computer](#). For more safety best practices, see the Regulatory Compliance home page at www.dell.com/regulatory_compliance.

⚠ OPREZ Hard drives are fragile. Exercise care when handling the hard drive.

Teme:

- [Procedura](#)
- [Dopunski koraci](#)

Procedura

1. Postavite nosač čvrstog diska preko čvrstog diska i poravnajte otvore za zavrtnje na nosaču čvrstog diska za otvorima za zavrtnje na čvrstom disku.
2. Postavite zavrtnje kojima je nosač čvrstog diska pričvršćen za čvrsti disk.
3. Postavite sklop čvrstog diska u osnovu računara i poravnajte otvore za zavrtnje na sklopu čvrstog diska sa otvorima za zavrtnje na osnovi računara.
4. Povežite kabl čvrstog diska na čvrsti disk.
5. Postavite zavrtnje kojima je sklop čvrstog diska pričvršćen za osnovu računara.

Dopunski koraci

1. Postavite [osnovnu ploču](#).
2. Postavite [bateriju](#).

Uklanjanje memorijskih modula

NAPOMENA Before working inside your computer, read the safety information that shipped with your computer and follow the steps in [Before working inside your computer](#). After working inside your computer, follow the instructions in [After working inside your computer](#). For more safety best practices, see the Regulatory Compliance home page at www.dell.com/regulatory_compliance.

Teme:

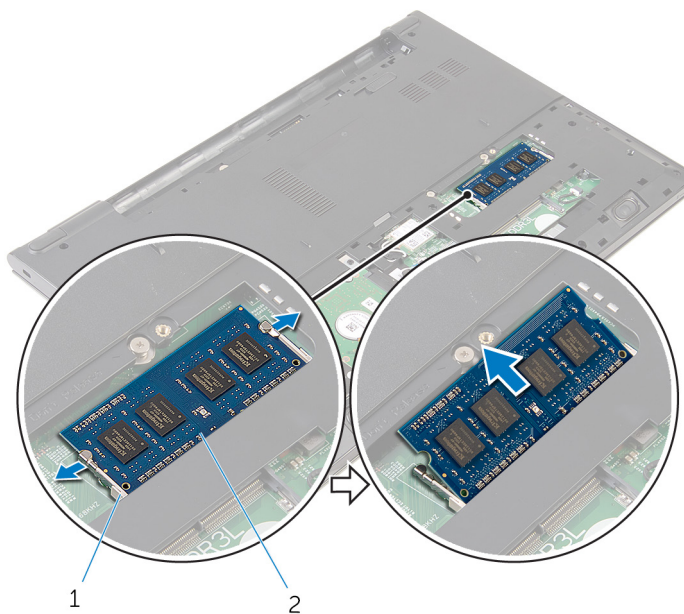
- [Pripremni koraci](#)
- [Procedure](#)

Pripremni koraci

1. Uklonite bateriju.
2. Uklonite osnovnu ploču.

Procedure

1. Using your fingertips, pry apart the securing clips on each end of the memory-module slot until the memory module pops up.
2. Slide and remove the memory module from the memory-module slot.



1. securing clips

2. memory module

Postavljanje memorijskih modula

i **NAPOMENA** Before working inside your computer, read the safety information that shipped with your computer and follow the steps in [Before working inside your computer](#). After working inside your computer, follow the instructions in [After working inside your computer](#). For more safety best practices, see the Regulatory Compliance home page at www.dell.com/regulatory_compliance.

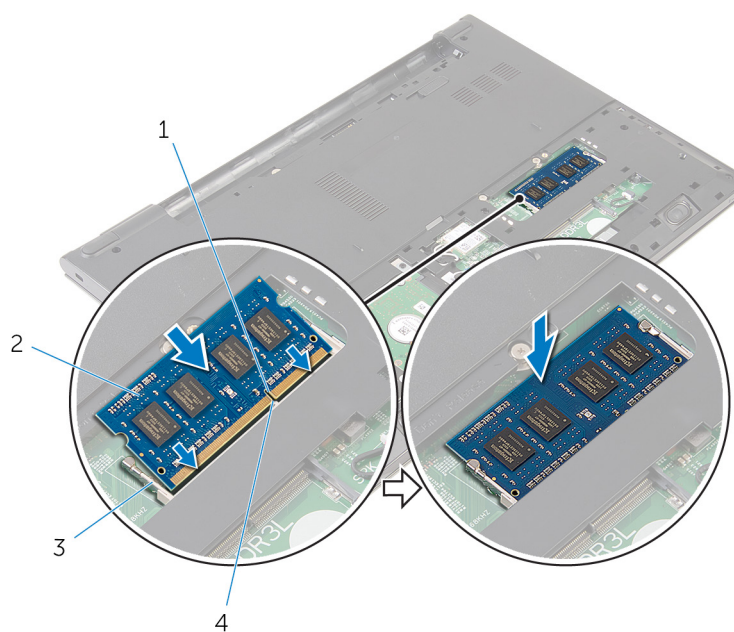
Teme:

- [Procedure](#)
- [Dopunski koraci](#)

Procedure

1. Align the notch on the memory module with the tab on the memory-module slot.
2. Slide the memory module firmly into the slot at an angle and press the memory module down until it clicks into place.

i **NOTE:** If you do not hear the click, remove the memory module and reinstall it.



1. notch
3. securing clips

2. memory module
4. tab

Dopunski koraci

1. Postavite [osnovnu ploču](#).
2. Postavite [bateriju](#).

Uklanjanje bežične kartice

ⓘ NAPOMENA Before working inside your computer, read the safety information that shipped with your computer and follow the steps in [Before working inside your computer](#). After working inside your computer, follow the instructions in [After working inside your computer](#). For more safety best practices, see the Regulatory Compliance home page at www.dell.com/regulatory_compliance.

Teme:

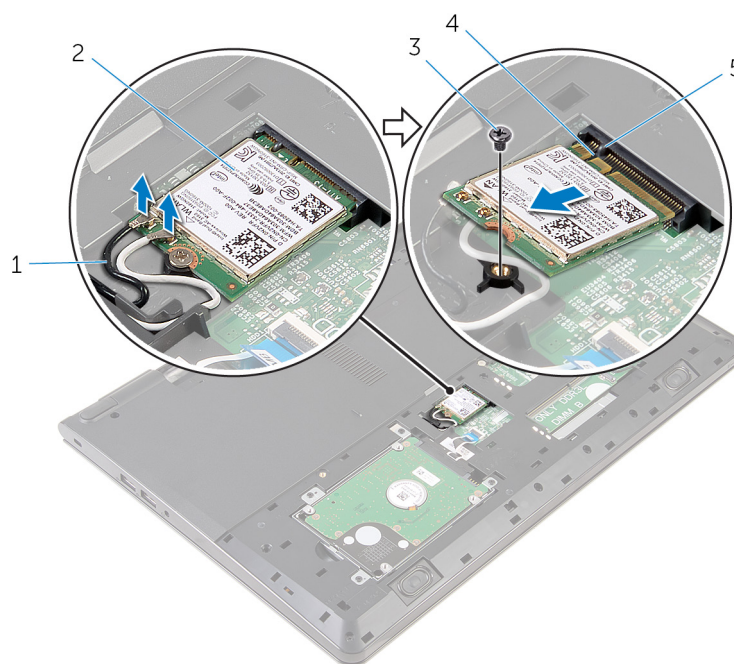
- [Pripremni koraci](#)
- [Procedure](#)

Pripremni koraci

1. Uklonite bateriju.
2. Uklonite osnovnu ploču.

Procedure

1. Disconnect the antenna cables from the wireless card.
2. Remove the screw that secures the wireless card to the system board.
3. Lift the wireless card, and then slide and remove it from the system board.



- | | |
|-----------------------|------------------|
| 1. antenna cables (2) | 2. wireless card |
| 3. screw | 4. notch |
| 5. tab | |

Postavljanje bežične kartice.

ⓘ NAPOMENA Before working inside your computer, read the safety information that shipped with your computer and follow the steps in [Before working inside your computer](#). After working inside your computer, follow the instructions in [After working inside your computer](#). For more safety best practices, see the Regulatory Compliance home page at www.dell.com/regulatory_compliance.

Teme:

- [Procedura](#)
- [Dopunski koraci](#)

Procedura

⚠ OPREZ Da biste sprečili oštećenje bežične kartice, ne postavljajte kablove ispod nje.

1. Poravnajte zarez na bežičnoj kartici sa držačem na priključku bežične kartice i gurnite karticu u priključak.
2. Postavite zavrtanj kojim je bežična kartica pričvršćena za matičnu ploču.
3. Povežite kablove antene sa bežičnom karticom. Sledeća tabela prikazuje šemu boja kablova aneten za bežičnu karticu koju podržava vaš računar:

Connectors on the wireless card	Antenna-cable color
Main (white triangle)	White
Auxiliary (black triangle)	Black

Dopunski koraci

1. Postavite [osnovnu ploču](#).
2. Postavite [bateriju](#).

Uklanjanje tastature

NAPOMENA Before working inside your computer, read the safety information that shipped with your computer and follow the steps in [Before working inside your computer](#). After working inside your computer, follow the instructions in [After working inside your computer](#). For more safety best practices, see the Regulatory Compliance home page at www.dell.com/regulatory_compliance.

Teme:

- [Pripremni koraci](#)
- [Procedura](#)

Pripremni koraci

Uklonite bateriju.

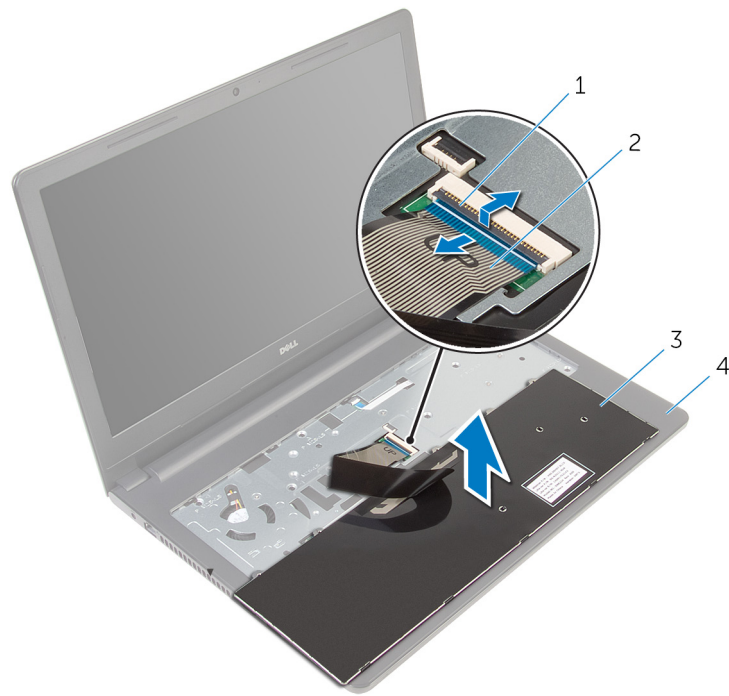
Procedura

1. Preokrenite računar i otvorite ekran što je više moguće.
2. Pomoću plastične olovke pažljivo oslobodite držače kojima je tastatura pričvršćena za sklop oslonca za dlanove.



1. držač
 2. plastična olovka
 3. tastatura
 4. sklop oslonca za dlanove
3. Pažljivo preokrenite tastaturu i postavite je na sklop oslonca za dlanove.
 4. Podignite reze i odvojite kabl tastature i kabl pozadinskog osvetljenja tastature sa matične ploče.

NAPOMENA Kabl pozadinskog osvetljenja tastature postoji samo ako je laptop isporučen sa tastaturom sa pozadinskim osvetljenjem.



1. reza
2. kabl tastature
3. tastatura
4. sklop oslonca za dlanove
5. Podignite tastaturu zajedno sa kablovima sa sklopa oslonca za dlanove.

Postavljanje tastature

ⓘ NAPOMENA Before working inside your computer, read the safety information that shipped with your computer and follow the steps in [Before working inside your computer](#). After working inside your computer, follow the instructions in [After working inside your computer](#). For more safety best practices, see the Regulatory Compliance home page at www.dell.com/regulatory_compliance.

Teme:

- [Procedura](#)
- [Dopunski koraci](#)

Procedura

1. Gurnite kabl tastature u otvor na matičnoj ploči i pritisnite rezu da biste učvrstili kabl.
2. Pažljivo preokrenite tastaturu, gurnite držače na tastaturi u otvore na sklopu oslonca za dlan i utisnite tastaturu u ležište.
3. Zatvorite ekran i preokrenite računar.

Dopunski koraci

Postavite [bateriju](#).

Uklanjanje oslonca za dlanove

NAPOMENA Before working inside your computer, read the safety information that shipped with your computer and follow the steps in [Before working inside your computer](#). After working inside your computer, follow the instructions in [After working inside your computer](#). For more safety best practices, see the Regulatory Compliance home page at www.dell.com/regulatory_compliance.

Teme:

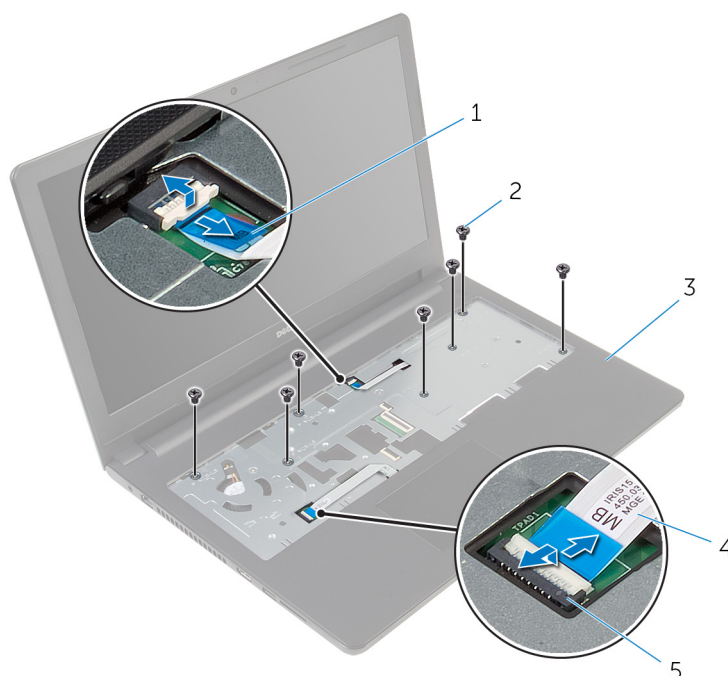
- [Prerequisites](#)
- [Procedure](#)

Prerequisites

1. Remove the [battery](#).
2. Remove the [base panel](#).
3. Follow the procedure from step 1 to step 3 in “Removing the [hard drive](#)”.
4. Remove the [keyboard](#).

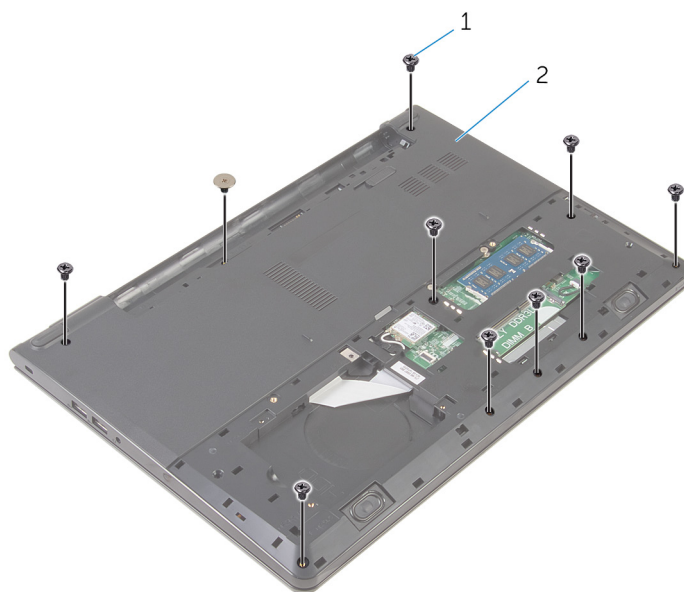
Procedure

1. Lift the latch and disconnect the touch-pad cable from the system board.
2. Lift the latch and disconnect the power-button cable from the system board.
3. Remove the screws that secure the palm-rest assembly to the computer base.



- | | |
|-----------------------|--------------------|
| 1. power-button cable | 2. screws (7) |
| 3. palm-rest assembly | 4. touch-pad cable |
| 5. latch | |

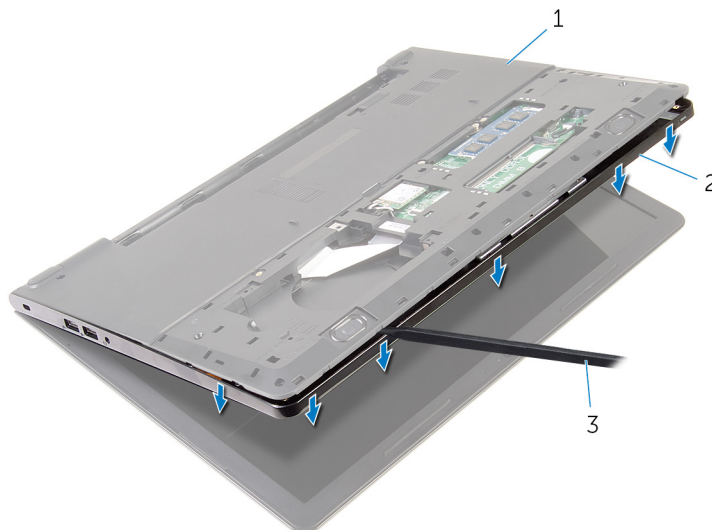
4. Close the display and turn the computer over.
5. Remove the screws that secure the palm-rest assembly to the computer base.



1. screws (10)

2. computer base

6. Slightly open the computer base and, using a plastic scribe, pry the palm-rest assembly off the computer base.



1. computer base

2. palm-rest assembly

3. plastic scribe

7. Turn the computer over and open the display.
8. Lift the palm-rest assembly off the computer base.



1. palm-rest assembly

2. computer base

9. Follow the procedure from step 1 to step 5 in "Removing the [touch pad](#)".

Postavljanje oslonca za dlanove

ⓘ NAPOMENA Before working inside your computer, read the safety information that shipped with your computer and follow the steps in [Before working inside your computer](#). After working inside your computer, follow the instructions in [After working inside your computer](#). For more safety best practices, see the Regulatory Compliance home page at www.dell.com/regulatory_compliance.

Teme:

- [Procedura](#)
- [Dopunski koraci](#)

Procedura

1. Sledite proceduru od koraka 1 do koraka 5 u delu "Postavljanje [table osetljive na dodir](#)".
2. Poravnajte otvore za zavrtnje na osloncu za dlanove sa otvorima za zavrtnje na osnovi računara i utisnite oslonac za dlanove u ležište.
3. Postavite zavrtnje kojima je oslonac za dlanove pričvršćen za osnovu računara.
4. Gurnite kabl table osetljive na dodir i kabl dugmeta za napajanje u konektore na matičnoj ploči i pritisnite reze da biste učvrstili kablove.
5. Preokrenite računar.
6. Postavite zavrtnje kojima je oslonac za dlanove pričvršćen za zadnji poklopac.

Dopunski koraci

1. Postavite [tastaturu](#).
2. Sledite proceduru od koraka 3 do koraka 5 u delu "Postavljanje [čvrstog diska](#)".
3. Postavite [osnovnu ploču](#).
4. Postavite [bateriju](#).

Uklanjanje table osetljive na dodir

ⓘ NAPOMENA Before working inside your computer, read the safety information that shipped with your computer and follow the steps in [Before working inside your computer](#). After working inside your computer, follow the instructions in [After working inside your computer](#). For more safety best practices, see the Regulatory Compliance home page at www.dell.com/regulatory_compliance.

Teme:

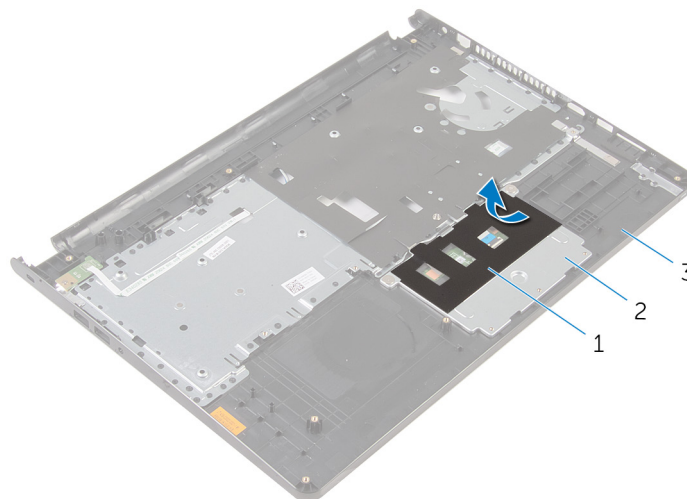
- [Prerequisites](#)
- [Procedure](#)

Prerequisites

1. Remove the [battery](#).
2. Remove the [base panel](#).
3. Follow the procedure from step 1 to step 3 in “Removing the [hard drive](#)”.
4. Remove the [keyboard](#).
5. Remove the [palm rest](#).

Procedure

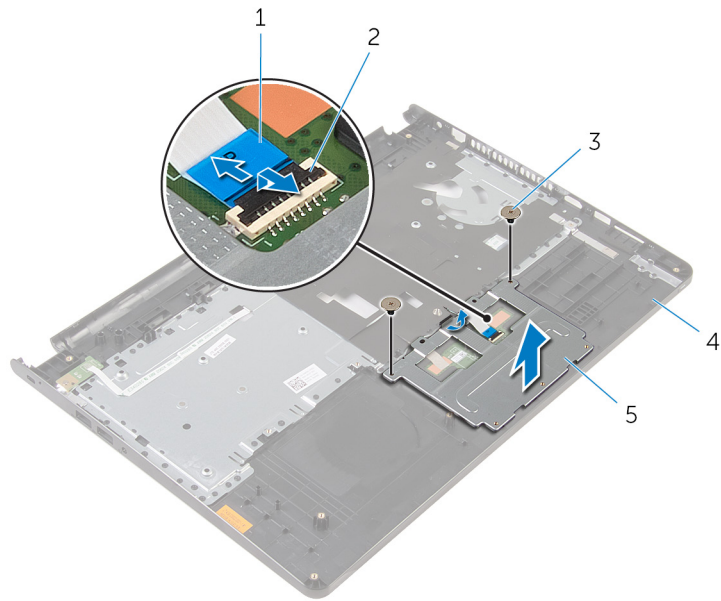
1. Peel the tape off the touch-pad bracket.



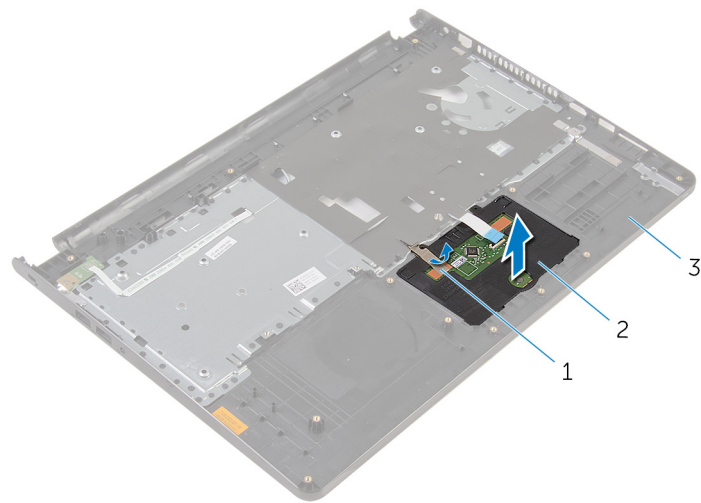
1. tape
3. palm rest

2. touch-pad bracket

2. Remove the screws that secure the touch-pad bracket to the touch pad.
3. Lift the latch and disconnect the touch-pad cable from touch pad.



- 1. touch-pad cable
 - 2. latch
 - 3. screws (2)
 - 4. palm rest
 - 5. touch-pad bracket
4. Peel off the tape over the touch pad.
 5. Lift the touch pad off the palm rest.



- 1. tape
- 2. touch pad
- 3. palm rest

Postavljanje table osetljive na dodir

ⓘ NAPOMENA Before working inside your computer, read the safety information that shipped with your computer and follow the steps in [Before working inside your computer](#). After working inside your computer, follow the instructions in [After working inside your computer](#). For more safety best practices, see the Regulatory Compliance home page at www.dell.com/regulatory_compliance.

Teme:

- [Procedura](#)
- [Dopunski koraci](#)

Procedura

1. Gurnite držače na tabli osetljivoj na dodir u otvore na osloncu za dlanove.
2. Zalepite traku koja pričvršćuje tablu osetljivu na dodir za oslonac za dlanove.
3. Poravnajte otvore za zavrtnje na nosaču table osetljive na dodir sa otvorima za zavrtnje na osloncu za dlanove.
4. Postavite zavrtnje koji pričvršćuju nosač table osetljive na dodir za oslonac za dlanove.
5. Zalepite traku preko nosača table osetljive na dodir.

Dopunski koraci

1. Postavite [oslonac za dlanove](#).
2. Postavite [tastaturu](#).
3. Sledite proceduru od koraka 4 do koraka 6 u delu "Postavljanje [čvrstog diska](#)".
4. Postavite [osnovnu ploču](#).
5. Postavite [bateriju](#).

Uklanjanje ploče dugmeta za napajanje

ⓘ NAPOMENA Before working inside your computer, read the safety information that shipped with your computer and follow the steps in [Before working inside your computer](#). After working inside your computer, follow the instructions in [After working inside your computer](#). For more safety best practices, see the Regulatory Compliance home page at www.dell.com/regulatory_compliance.

Teme:

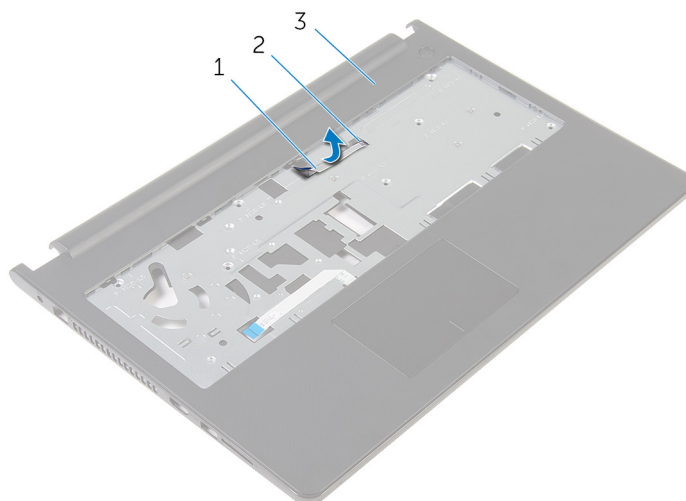
- [Prerequisites](#)
- [Procedure](#)

Prerequisites

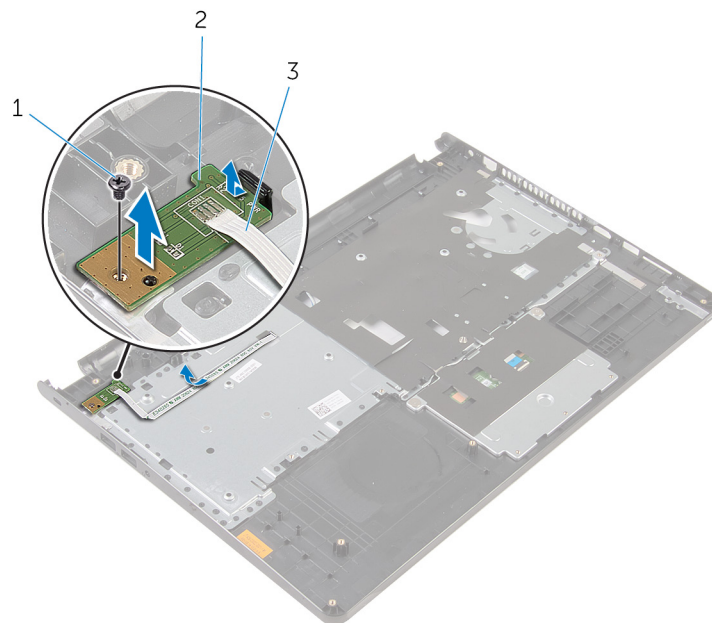
1. Remove the [battery](#).
2. Remove the [base panel](#).
3. Follow the procedure from step 1 to step 3 in “Removing the [hard drive](#)”.
4. Remove the [keyboard](#).
5. Follow the procedure from step 1 to step 8 in “Removing the [palm rest](#)”.

Procedure

1. Slide the power-button board cable through the slot on the palm rest.



- | | |
|-----------------------------|---------|
| 1. power-button board cable | 2. slot |
| 3. palm rest | |
2. Turn the palm rest over.
 3. Remove the screw that secures the power-button board to the palm rest.
 4. Slide the power-button board out from the tab on the palm rest.
 5. Lift the power-button board, along with its cable, off the palm rest.



1. screw
3. power-button board cable

2. power-button board

Postavljanje ploče dugmeta za napajanje

ⓘ NAPOMENA Before working inside your computer, read the safety information that shipped with your computer and follow the steps in [Before working inside your computer](#). After working inside your computer, follow the instructions in [After working inside your computer](#). For more safety best practices, see the Regulatory Compliance home page at www.dell.com/regulatory_compliance.

Teme:

- [Procedura](#)
- [Dopunski koraci](#)

Procedura

1. Gurnite ploču dugmeta za napajanje ispod držača na osloncu za dlanove i poravnajte otvor za zavrtanj na ploči dugmeta za napajanje sa otvorom za zavrtanj na osloncu za dlanove.
2. Postavite zavrtanj kojim je ploča dugmeta za napajanje pričvršćena za oslonac za dlanove.
3. Gurnite kabl ploče dugmeta za napajanje kroz otvor na osloncu za dlanove.

Dopunski koraci

1. Sledite proceduru od koraka 2 do koraka 6 u delu "Postavljanje [oslonca za dlanove](#)".
2. Postavite [tastaturu](#).
3. Sledite proceduru od koraka 4 do koraka 6 u delu "Postavljanje [čvrstog diska](#)".
4. Postavite [osnovnu ploču](#).
5. Postavite [bateriju](#).

Uklanjanje zvučnika

ⓘ NAPOMENA Before working inside your computer, read the safety information that shipped with your computer and follow the steps in [Before working inside your computer](#). After working inside your computer, follow the instructions in [After working inside your computer](#). For more safety best practices, see the Regulatory Compliance home page at www.dell.com/regulatory_compliance.

Teme:

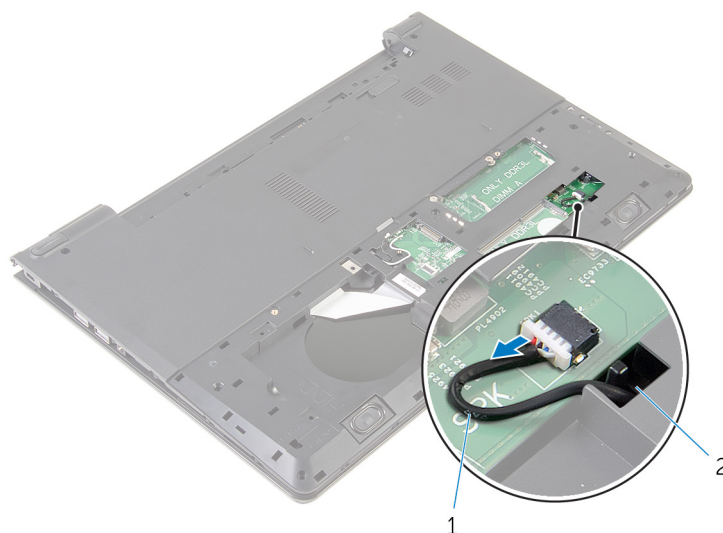
- [Prerequisites](#)
- [Procedure](#)

Prerequisites

1. Remove the [battery](#).
2. Remove the [base panel](#).
3. Follow the procedure from step 1 to step 3 in “Removing the [hard drive](#)”.
4. Remove the [keyboard](#).
5. Follow the procedure from step 1 to step 8 in “Removing the [palm rest](#)”.

Procedure

1. Disconnect the speaker cable from the system board.



1. speaker cable
 2. slot
2. Turn the computer over and open the display.
 3. Note the speaker-cable routing and remove the cable from the routing guides on the computer base.
 4. Slide the speaker cable through the slot on the computer base and lift the speakers, along with the speaker cable, off the computer base .



1. speaker cable

2. speakers (2)

Postavljanje zvučnika

ⓘ NAPOMENA Before working inside your computer, read the safety information that shipped with your computer and follow the steps in [Before working inside your computer](#). After working inside your computer, follow the instructions in [After working inside your computer](#). For more safety best practices, see the Regulatory Compliance home page at www.dell.com/regulatory_compliance.

Teme:

- [Procedura](#)
- [Dopunski koraci](#)

Procedura

1. Koristeći stubove za poravnanje, poravnajte i postavite zvučnike na oslonac za dlanove.
2. Provucite kabl zvučnika kroz vođice za usmeravanje na osloncu za dlanove.
3. Preokrenite računar.
4. Provucite kabl zvučnika kroz slot na osnovi računara i povežite kabl zvučnika na matičnu ploču.

Dopunski koraci

1. Sledite proceduru od koraka 2 do koraka 6 u delu "Postavljanje [oslonca za dlanove](#)".
2. Postavite [tastaturu](#).
3. Sledite proceduru od koraka 3 do koraka 5 u delu "Postavljanje [čvrstog diska](#)".
4. Postavite [osnovnu ploču](#).
5. Postavite [bateriju](#).

Uklanjanje U/I ploče

ⓘ NAPOMENA Before working inside your computer, read the safety information that shipped with your computer and follow the steps in [Before working inside your computer](#). After working inside your computer, follow the instructions in [After working inside your computer](#). For more safety best practices, see the Regulatory Compliance home page at www.dell.com/regulatory_compliance.

Teme:

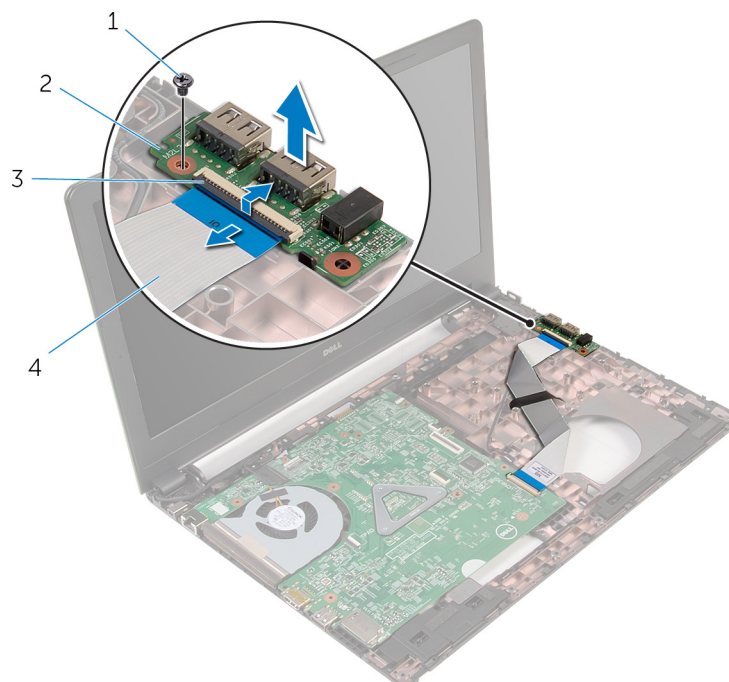
- [Prerequisites](#)
- [Procedure](#)

Prerequisites

1. Remove the [battery](#).
2. Remove the [base panel](#).
3. Follow the procedure from step 1 to step 3 in “Removing the [hard drive](#)”.
4. Remove the [keyboard](#).
5. Follow the procedure from step 1 to step 8 in “Removing the [palm rest](#)”.

Procedure

1. Lift the latch and disconnect the I/O-board cable from the I/O board.
2. Remove the screw that secures the I/O board to the computer base.
3. Lift the I/O board off the computer base.



- | | |
|----------|--------------------|
| 1. screw | 2. I/O board |
| 3. latch | 4. I/O-board cable |

Postavljanje U/I ploče

ⓘ NAPOMENA Before working inside your computer, read the safety information that shipped with your computer and follow the steps in [Before working inside your computer](#). After working inside your computer, follow the instructions in [After working inside your computer](#). For more safety best practices, see the Regulatory Compliance home page at www.dell.com/regulatory_compliance.

Teme:

- [Procedura](#)
- [Dopunski koraci](#)

Procedura

1. Poravnajte otvor za zavrtnanj na U/I ploči sa otvorom za zavrtnanj na osnovni računara.
2. Postavite zavrtnanj kojim je U/I ploča pričvršćena za osnovu računara.
3. Gurnite kabl U/I ploče u konektor na U/I ploči i pritisnite rezu konektora da biste učvrstili kabl.

Dopunski koraci

1. Sledite proceduru od koraka 2 do koraka 6 u delu "Postavljanje [oslonca za dlanove](#)".
2. Postavite [tastaturu](#).
3. Sledite proceduru od koraka 3 do koraka 5 u delu "Postavljanje [čvrstog diska](#)".
4. Postavite [osnovnu ploču](#).
5. Postavite [bateriju](#).

Uklanjanje matične ploče

- i** **NAPOMENA** Before working inside your computer, read the safety information that shipped with your computer and follow the steps in [Before working inside your computer](#). After working inside your computer, follow the instructions in [After working inside your computer](#). For more safety best practices, see the Regulatory Compliance home page at www.dell.com/regulatory_compliance.
- i** **NAPOMENA** Your computer's Service Tag is stored in the system board. You must enter the Service Tag in the BIOS setup program after you replace the system board.
- i** **NAPOMENA** Replacing the system board removes any changes you have made to the BIOS using the BIOS setup program. You must make the desired changes again after you replace the system board.
- i** **NAPOMENA** Before disconnecting the cables from the system board, note the location of the connectors so that you can reconnect the cables correctly after you replace the system board.

Time:

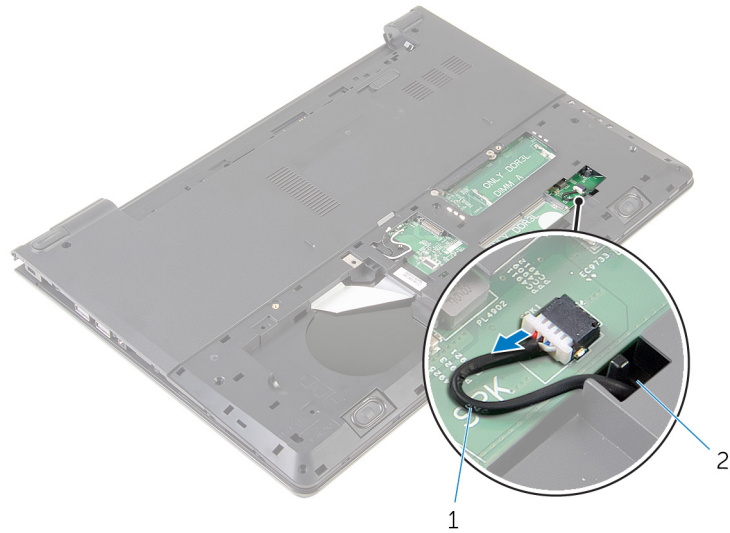
- [Prerequisites](#)
- [Procedure](#)

Prerequisites

1. Remove the [battery](#).
2. Remove the [base panel](#).
3. Follow the procedure from step 1 to step 3 in "Removing the [hard drive](#)".
4. Remove the [memory modules](#).
5. Remove the [wireless card](#).
6. Remove the [keyboard](#).
7. Follow the procedure from step 1 to step 8 in "Removing the [palm rest](#)".

Procedure

1. Disconnect the speaker cable from the system board.



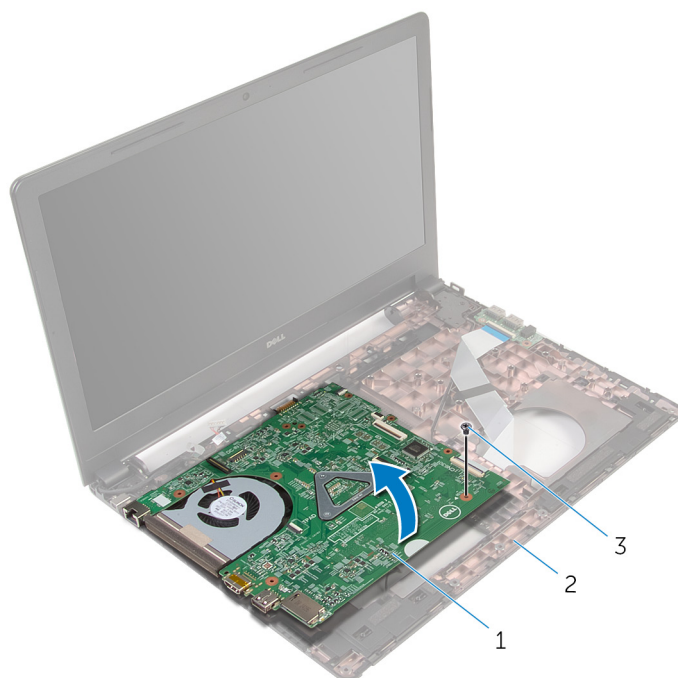
- 1. speaker cable
- 2. slot

2. Turn the computer over and open the display as far as possible.
3. Peel the tape that secures the display cable to the system board.
4. Lift the latch and disconnect the I/O-board cable from the system board.
5. Lift the latch and disconnect the display cable from the system board.
6. Disconnect the power-adaptor port cable from the system board.
7. Lift the latch and disconnect the I/O-board cable from the system board.



- 1. tape
- 2. display cable
- 3. latch
- 4. power-adaptor port cable
- 5. I/O-board cable
- 6. system board

8. Remove the screw that secures the system board to the computer base.
9. Lift the system board off the computer base.



1. system board
3. screw

2. computer base

10. Remove the [coin-cell battery](#).
11. Remove the [heat sink](#).

Postavljanje matične ploče

- i** **NAPOMENA** Before working inside your computer, read the safety information that shipped with your computer and follow the steps in [Before working inside your computer](#). After working inside your computer, follow the instructions in [After working inside your computer](#). For more safety best practices, see the Regulatory Compliance home page at www.dell.com/regulatory_compliance.
- i** **NAPOMENA** Your computer's Service Tag is stored in the system board. You must enter the Service Tag in the BIOS setup program after you replace the system board.
- i** **NAPOMENA** Replacing the system board removes any changes you have made to the BIOS using the BIOS setup program. You must make the desired changes again after you replace the system board.

Teme:

- [Procedura](#)
- [Dopunski koraci](#)

Procedura

1. Postavite [rashladni element](#).
2. Postavite [dugmastu bateriju](#).

⚠ OPREZ Da ne biste oštetili matičnu ploču, proverite da ispod nje nisu postavljeni kablovi.

3. Poravnajte otvor za zavrtnanj na matičnoj ploči sa otvorom za zavrtnanj na osnovi računara i postavite matičnu ploču na osnovu računara.
4. Postavite zavrtnanj kojim je matična ploča pričvršćena za osnovu računara.
5. Povežite kabl porta adaptera za napajanje na matičnu ploču.
6. Gurnite kabl ekrana u konektor na matičnoj ploči i pritisnite rezu da biste učvrstili kabl.
7. Zalepite traku kojom je kabl ekrana pričvršćen za matičnu ploču.
8. Gurnite kabl U/I ploče u konektor na matičnoj ploči i pritisnite rezu da biste učvrstili kabl.
9. Zatvorite ekran i preokrenite računar.
10. Povežite kabl zvučnika na matičnu ploču.

Dopunski koraci

1. Sledite proceduru od koraka 2 do koraka 6 u delu "Postavljanje [oslonca za dlanove](#)".
2. Postavite [tastaturu](#).
3. Postavite [bežičnu karticu](#).
4. Postavite [memorijske module](#).
5. Sledite proceduru od koraka 3 do koraka 5 u delu "Postavljanje [čvrstog diska](#)".
6. Postavite [bateriju](#).
7. Postavite [osnovnu ploču](#).

Uklanjanje dugmaste baterije

ⓘ NAPOMENA Before working inside your computer, read the safety information that shipped with your computer and follow the steps in [Before working inside your computer](#). After working inside your computer, follow the instructions in [After working inside your computer](#). For more safety best practices, see the Regulatory Compliance home page at www.dell.com/regulatory_compliance.

⚠ OPREZ Removing the coin-cell battery resets the BIOS setup program's settings to default. It is recommended that you note the BIOS setup program's settings before removing the coin-cell battery.

Time:

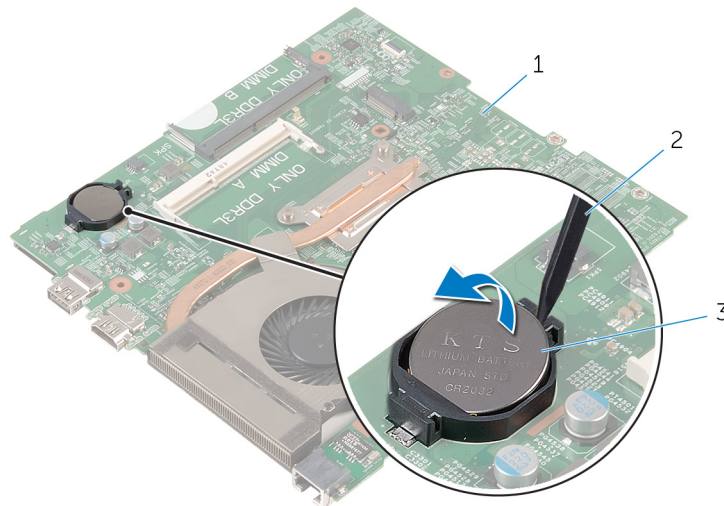
- [Prerequisites](#)
- [Procedure](#)

Prerequisites

1. Remove the [battery](#).
2. Remove the [base panel](#).
3. Follow the procedure from step 1 to step 3 in "Removing the [hard drive](#)".
4. Remove the [memory modules](#).
5. Remove the [wireless card](#).
6. Remove the [keyboard](#).
7. Follow the procedure from step 1 to step 8 in "Removing the [palm rest](#)".
8. Follow the procedure from step 1 to step 8 in "Removing the [system board](#)".

Procedure

Using a plastic scribe, gently pry the coin-cell battery out of the battery socket on the system board.



1. system board
3. coin-cell battery

2. plastic scribe

Postavljanje dugmaste baterije

ⓘ NAPOMENA Before working inside your computer, read the safety information that shipped with your computer and follow the steps in [Before working inside your computer](#). After working inside your computer, follow the instructions in [After working inside your computer](#). For more safety best practices, see the Regulatory Compliance home page at www.dell.com/regulatory_compliance.

Teme:

- [Procedura](#)
- [Post-requisites](#)

Procedura

Gurnite dugmastu bateriju u priključak za bateriju na matičnoj ploči, tako da pozitivna strana baterije bude okrenuta prema gore.

Post-requisites

1. Follow the procedure from step 3 to step 10 in “Replacing the [system board](#)”.
2. Follow the procedure from step 2 to step 6 in “Replacing the [palm rest](#)”.
3. Replace the [keyboard](#).
4. Replace the [wireless card](#).
5. Replace the [memory modules](#).
6. Follow the procedure from step 3 to step 5 in “Replacing the [hard drive](#)”.
7. Replace the [battery](#).
8. Replace the [base panel](#).

Uklanjanje rashladnog elementa

i **NAPOMENA** Before working inside your computer, read the safety information that shipped with your computer and follow the steps in [Before working inside your computer](#). After working inside your computer, follow the instructions in [After working inside your computer](#). For more safety best practices, see the Regulatory Compliance home page at www.dell.com/regulatory_compliance.

i **NAPOMENA** The heat sink may become hot during normal operation. Allow sufficient time for the heat sink to cool before you touch it.

⚠ **OPREZ** For maximum cooling of the processor, do not touch the heat transfer areas on the heat sink. The oils in your skin can reduce the heat transfer capability of the thermal grease.

Teme:

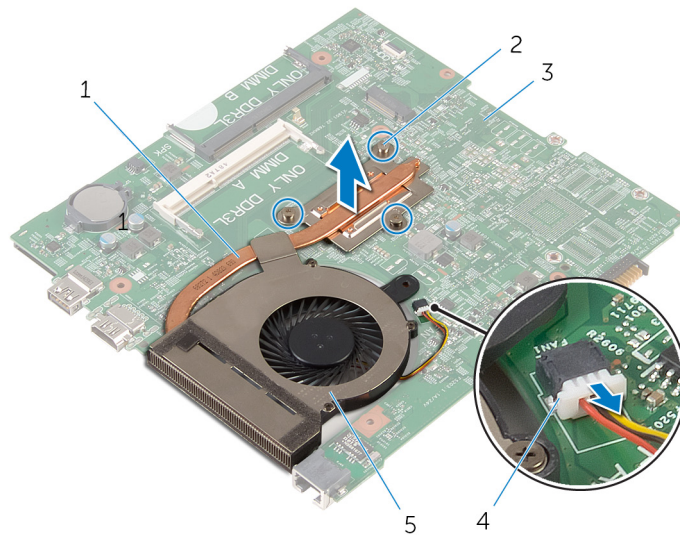
- [Prerequisites](#)
- [Procedure](#)

Prerequisites

1. Remove the [battery](#).
2. Remove the [base panel](#).
3. Follow the procedure from step 1 to step 3 in “Removing the [hard drive](#)”.
4. Remove the [memory modules](#).
5. Remove the [wireless card](#).
6. Remove the [keyboard](#).
7. Follow the procedure from step 1 to step 8 in “Removing the [palm rest](#)”.
8. Follow the procedure from step 1 to step 8 in “Removing the [system board](#)”.

Procedure

1. Turn the system board over.
2. In sequential order, as indicated on the heat sink, loosen the captive screws that secure the cooling assembly to the system board.
3. Disconnect the fan cable from the system board.



- 1. cooling assembly
 - 2. captive screws (3)
 - 3. system board
 - 4. fan cable
 - 5. fan
4. Lift the cooling assembly off the system board.
5. Remove the fan.

Postavljanje rashladnog elementa

i **NAPOMENA** Before working inside your computer, read the safety information that shipped with your computer and follow the steps in [Before working inside your computer](#). After working inside your computer, follow the instructions in [After working inside your computer](#). For more safety best practices, see the Regulatory Compliance home page at www.dell.com/regulatory_compliance.

Δ **OPREZ** Incorrect alignment of the heat sink can damage the system board and processor.

i **NAPOMENA** The original thermal grease can be reused if the original system board and heat sink are reinstalled together. If either the system board or the heat sink is replaced, use the thermal pad provided in the kit to ensure that thermal conductivity is achieved.

Teme:

- [Procedura](#)
- [Dopunski koraci](#)

Procedura

1. Postavite [ventilator](#).
2. Poravnajte zavrtnje na sklopu za hlađenje sa otvorima za zavrtnje na matičnoj ploči.
3. U odgovarajućem redosledu, naznačenom na rashladnom elementu, pritegnite neispadajuće zavrtnje koji pričvršćuju sklop za hlađenje za matičnu ploču.
4. Povežite kabl ventilatora na matičnu ploču.

Dopunski koraci

1. Sledite proceduru od koraka 3 do koraka 10 u delu "Postavljanje [matične ploče](#)".
2. Sledite proceduru od koraka 2 do koraka 6 u delu "Postavljanje [oslonca za dlanove](#)".
3. Postavite [tastaturu](#).
4. Postavite [bežičnu karticu](#).
5. Postavite [memorijske module](#).
6. Sledite proceduru od koraka 3 do koraka 5 u delu "Postavljanje [čvrstog diska](#)".
7. Postavite [bateriju](#).
8. Postavite [osnovnu ploču](#).

Uklanjanje ventilatora

ⓘ NAPOMENA Before working inside your computer, read the safety information that shipped with your computer and follow the steps in [Before working inside your computer](#). After working inside your computer, follow the instructions in [After working inside your computer](#). For more safety best practices, see the Regulatory Compliance home page at www.dell.com/regulatory_compliance.

Teme:

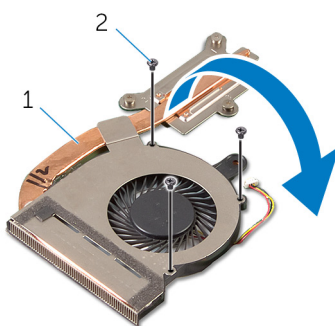
- [Prerequisites](#)
- [Procedure](#)

Prerequisites

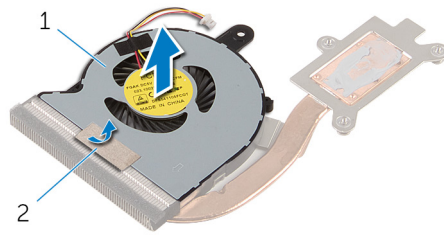
1. Remove the [battery](#).
2. Remove the [base panel](#).
3. Follow the procedure from step 1 to step 3 in “Removing the [hard drive](#)”.
4. Remove the [memory modules](#).
5. Remove the [wireless card](#).
6. Remove the [keyboard](#).
7. Follow the procedure from step 1 to step 8 in “Removing the [palm rest](#)”.
8. Follow the procedure from step 1 to step 8 in “Removing the [system board](#)”.
9. Follow the procedure from step 1 to step 4 in “Removing the [heat sink](#)”.

Procedure

1. Remove the screws that secure the fan to the heat sink.



1. cooling assembly
 2. screws (3)
2. Turn the cooling assembly over.
 3. Peel off the tape that secures the fan to the heat sink.
 4. Lift the fan off the heat sink.



1. fan

2. tape

Postavljanje ventilatora

ⓘ NAPOMENA Before working inside your computer, read the safety information that shipped with your computer and follow the steps in [Before working inside your computer](#). After working inside your computer, follow the instructions in [After working inside your computer](#). For more safety best practices, see the Regulatory Compliance home page at www.dell.com/regulatory_compliance.

Teme:

- [Procedura](#)
- [Post-requisites](#)

Procedura

1. Postavite ventilator na rashladni element.
2. Zalepite traku koja učvršćuje ventilator na rashladni element.
3. Okrenite sklop za hlađenje.
4. Postavite zavrtnje kojima je ventilator pričvršćen za rashladni element.

Post-requisites

1. Follow the procedure from step 2 to step 4 in “Replacing the [heat sink](#)”.
2. Follow the procedure from step 3 to step 10 in “Replacing the [system board](#)”.
3. Follow the procedure from step 2 to step 6 in “Replacing the [palm rest](#)”.
4. Replace the [keyboard](#).
5. Replace the [wireless card](#).
6. Replace the [memory modules](#).
7. Follow the procedure from step 3 to step 5 in “Replacing the [hard drive](#)”.
8. Replace the [battery](#).
9. Replace the [base panel](#).

Uklanjanje sklopa ekrana

ⓘ NAPOMENA Before working inside your computer, read the safety information that shipped with your computer and follow the steps in [Before working inside your computer](#). After working inside your computer, follow the instructions in [After working inside your computer](#). For more safety best practices, see the Regulatory Compliance home page at www.dell.com/regulatory_compliance.

Teme:

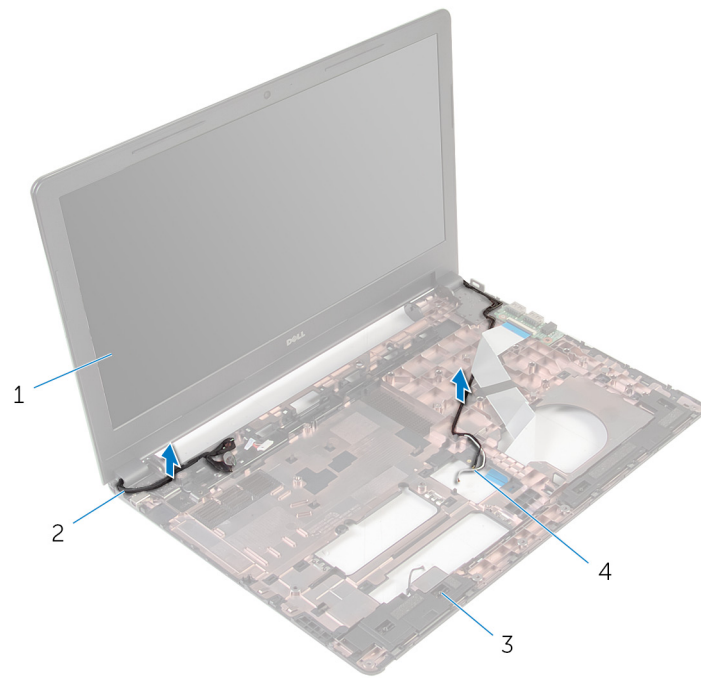
- [Prerequisites](#)
- [Procedura](#)

Prerequisites

1. Remove the [battery](#).
2. Remove the [base panel](#).
3. Follow the procedure from step 1 to step 3 in "Removing the [hard drive](#)".
4. Remove the [memory modules](#).
5. Remove the [wireless card](#).
6. Remove the [keyboard](#).
7. Follow the procedure from step 1 to step 8 in "Removing the [palm rest](#)".
8. Follow the procedure from step 1 to step 8 in "Removing the [system board](#)".

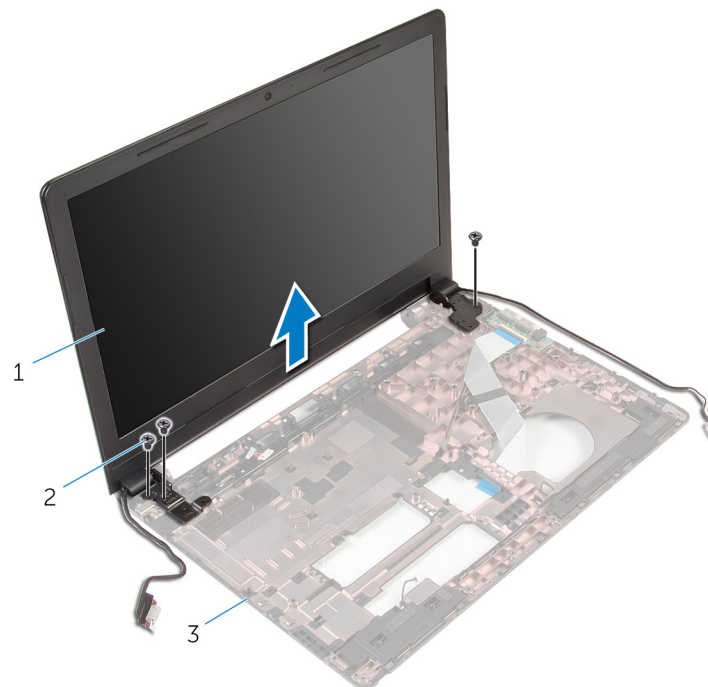
Procedura

1. Preokrenite računar i otvorite ekran što je više moguće.
2. Pribeležite putanju kabla antene i izvadite kablove antene iz vodiča za usmeravanje na osnovi računara.
3. Pribeležite putanju kabla ekrana i izvadite kabl iz vodiča za usmeravanje na osnovi računara.



- 1. sklop ekrana
- 2. kabl ekrana
- 3. osnova računara
- 4. antenski kablovi (2)

4. Uklonite zavrtnje kojima su zglobovi ekrana pričvršćeni za osnovu računara.



- 1. sklop ekrana
- 2. zavrtnji (3)
- 3. osnova računara

5. Pažljivo podignite sklop ekrana sa osnove računara.

Postavljanje sklopa ekrana

ⓘ NAPOMENA Before working inside your computer, read the safety information that shipped with your computer and follow the steps in [Before working inside your computer](#). After working inside your computer, follow the instructions in [After working inside your computer](#). For more safety best practices, see the Regulatory Compliance home page at www.dell.com/regulatory_compliance.

Teme:

- [Procedura](#)
- [Dopunski koraci](#)

Procedura

1. Poravnajte otvore za zavrtnje na zglobovima ekrana sa otvorima za zavrtnje na osnovi računara.
2. Postavite zavrtnje kojima su zglobovi ekrana pričvršćeni za osnovu računara.
3. Provucite kabl ekrana kroz vodiče za usmeravanje na osnovi računara.
4. Provucite kablove antene kroz vodiče za usmeravanje i provucite kablove antene kroz slot na osnovi računara.
5. Zatvorite ekran i preokrenite računar.

Dopunski koraci

1. Sledite proceduru od koraka 3 do koraka 10 u delu "Postavljanje [matične ploče](#)".
2. Sledite proceduru od koraka 2 do koraka 6 u delu "Postavljanje [oslonca za dlanove](#)".
3. Postavite [tastaturu](#).
4. Postavite [bežičnu karticu](#).
5. Postavite [memorijske module](#).
6. Sledite proceduru od koraka 3 do koraka 5 u delu "Postavljanje [čvrstog diska](#)".
7. Postavite [osnovnu ploču](#).
8. Postavite [bateriju](#).

Uklanjanje porta adaptera za napajanje

ⓘ NAPOMENA Before working inside your computer, read the safety information that shipped with your computer and follow the steps in [Before working inside your computer](#). After working inside your computer, follow the instructions in [After working inside your computer](#). For more safety best practices, see the Regulatory Compliance home page at www.dell.com/regulatory_compliance.

Teme:

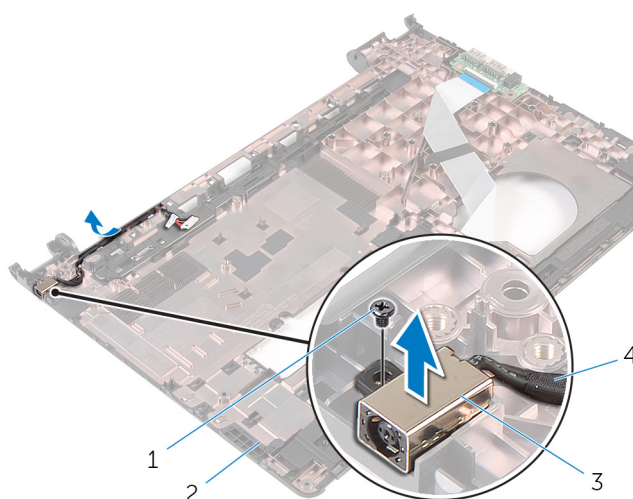
- [Prerequisites](#)
- [Procedura](#)

Prerequisites

1. Remove the [battery](#).
2. Remove the [base panel](#).
3. Follow the procedure from step 1 to step 3 in “Removing the [hard drive](#)”.
4. Remove the [memory modules](#).
5. Remove the [wireless card](#).
6. Remove the [keyboard](#).
7. Follow the procedure from step 1 to step 8 in “Removing the [palm rest](#)”.
8. Follow the procedure from step 1 to step 8 in “Removing the [system board](#)”.
9. Remove the [display assembly](#).

Procedura

1. Pribeležite putanju kablja porta adaptera za napajanje i izvadite kabl iz vođica za usmeravanje na osnovi računara.
2. Postavite zavrtanj kojim je port adaptera za napajanje pričvršćen za osnovu računara.
3. Podignite port adaptera za napajanje, zajedno sa kablom porta adaptera za napajanje, sa osnove računara.



- | | |
|-------------------------------|-------------------------------------|
| 1. zavrtanj | 2. osnova računara |
| 3. port adaptera za napajanje | 4. kabl porta adaptera za napajanje |

Postavljanje porta adaptera za napajanje

ⓘ NAPOMENA Before working inside your computer, read the safety information that shipped with your computer and follow the steps in [Before working inside your computer](#). After working inside your computer, follow the instructions in [After working inside your computer](#). For more safety best practices, see the Regulatory Compliance home page at www.dell.com/regulatory_compliance.

Teme:

- [Procedura](#)
- [Dopunski koraci](#)

Procedura

1. Gurnite port adaptera za napajanje u otvor na osnovi računara.
2. Povežite kabl porta adaptera za napajanje na matičnu ploču.
3. Provućite kabl porta adaptera za napajanje kroz vodíce za usmeravanje na osnovi računara.

Dopunski koraci

1. Postavite [sklop ekrana](#).
2. Sledite proceduru od koraka 3 do koraka 10 u delu "Postavljanje [matične ploče](#)".
3. Sledite proceduru od koraka 2 do koraka 6 u delu "Postavljanje [oslonca za dlanove](#)".
4. Postavite [tastaturu](#).
5. Postavite [bežičnu karticu](#).
6. Postavite [memorijske module](#).
7. Sledite proceduru od koraka 3 do koraka 5 u delu "Postavljanje [čvrstog diska](#)".
8. Postavite [osnovnu ploču](#).
9. Postavite [bateriju](#).

Uklanjanje okna ekrana

ⓘ NAPOMENA Before working inside your computer, read the safety information that shipped with your computer and follow the steps in [Before working inside your computer](#). After working inside your computer, follow the instructions in [After working inside your computer](#). For more safety best practices, see the Regulatory Compliance home page at www.dell.com/regulatory_compliance.

Teme:

- [Prerequisites](#)
- [Procedura](#)

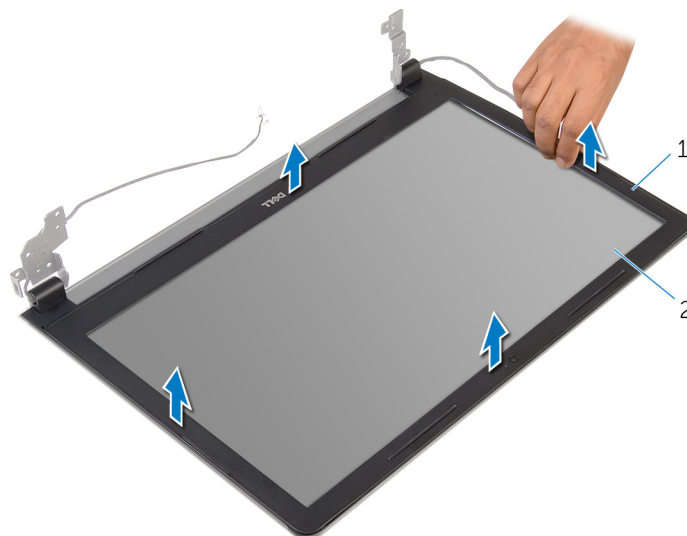
Prerequisites

ⓘ NOTE: These instructions are applicable only for laptops with a non-touch screen display.

1. Remove the [battery](#).
2. Remove the [base panel](#).
3. Follow the procedure from step 1 to step 3 in “Removing the [hard drive](#)”.
4. Remove the [memory modules](#).
5. Remove the [wireless card](#).
6. Remove the [keyboard](#).
7. Follow the procedure from step 1 to step 8 in “Removing the [palm rest](#)”.
8. Follow the procedure from step 1 to step 8 in “Removing the [system board](#)”.
9. Remove the [display assembly](#).

Procedura

1. Vrhovima prstiju pažljivo odvojite i podignite unutrašnje ivice okna ekrana.



1. okno ekrana

2. ploča ekrana

2. Podignite okno ekrana sa sklopa ekrana.

Postavljanje okna ekrana

ⓘ NAPOMENA Before working inside your computer, read the safety information that shipped with your computer and follow the steps in [Before working inside your computer](#). After working inside your computer, follow the instructions in [After working inside your computer](#). For more safety best practices, see the Regulatory Compliance home page at www.dell.com/regulatory_compliance.

Teme:

- [Procedura](#)
- [Dopunski koraci](#)

Procedura

Poravnajte okno ekrana sa zadnjim poklopcem ekrana i pažljivo utisnite okno ekrana u ležište.

Dopunski koraci

1. Postavite [sklop ekrana](#).
2. Sledite proceduru od koraka 3 do koraka 10 u delu "Postavljanje [matične ploče](#)".
3. Sledite proceduru od koraka 2 do koraka 6 u delu "Postavljanje [oslonca za dlanove](#)".
4. Postavite [tastaturu](#).
5. Postavite [bežičnu karticu](#).
6. Postavite [memorijske module](#).
7. Sledite proceduru od koraka 3 do koraka 5 u delu "Postavljanje [čvrstog diska](#)".
8. Postavite [osnovnu ploču](#).
9. Postavite [bateriju](#).

Uklanjanje ploče ekrana

ⓘ NAPOMENA Before working inside your computer, read the safety information that shipped with your computer and follow the steps in [Before working inside your computer](#). After working inside your computer, follow the instructions in [After working inside your computer](#). For more safety best practices, see the Regulatory Compliance home page at www.dell.com/regulatory_compliance.

Teme:

- [Prerequisites](#)
- [Procedura](#)

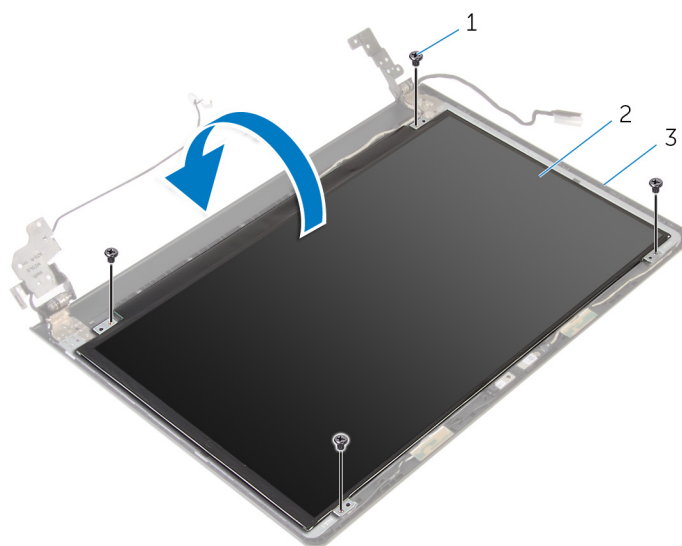
Prerequisites

ⓘ NOTE: These instructions are applicable only for laptops with a non-touch screen display.

1. Remove the [battery](#).
2. Remove the [base panel](#).
3. Follow the procedure from step 1 to step 3 in “Removing the [hard drive](#)”.
4. Remove the [memory modules](#).
5. Remove the [wireless card](#).
6. Remove the [keyboard](#).
7. Follow the procedure from step 1 to step 8 in “Removing the [palm rest](#)”.
8. Follow the procedure from step 1 to step 8 in “Removing the [system board](#)”.
9. Remove the [display assembly](#).
10. Remove the [display bezel](#).

Procedura

1. Uklonite zavrtnje kojima je ploča ekrana pričvršćena za zadnji poklopac ekrana.
2. Preokrenite ploču ekrana.

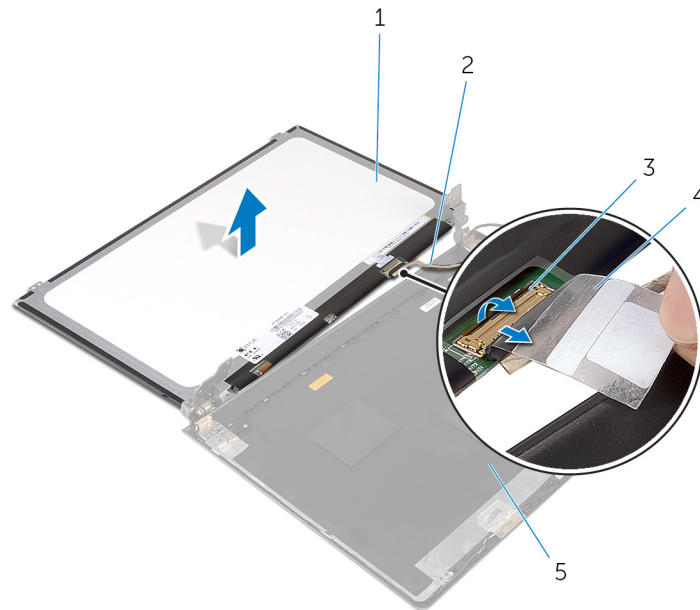


1. zavrtnji (4)

2. ploča ekrana

3. zadnji poklopac ekrana

3. Odlepite traku koja pričvršćuje kabl ekrana za zadnji poklopac ekrana.
4. Podignite rezu i odspojite kabl ekrana sa zadnjeg poklopca ekrana.
5. Podignite ploču ekrana sa zadnjeg poklopca ekrana.



1. ploča ekrana

2. kabl ekrana

3. reza

4. traka

Postavljanje ploče ekrana

i **NAPOMENA** Before working inside your computer, read the safety information that shipped with your computer and follow the steps in [Before working inside your computer](#). After working inside your computer, follow the instructions in [After working inside your computer](#). For more safety best practices, see the Regulatory Compliance home page at www.dell.com/regulatory_compliance.

Teme:

- [Procedura](#)
- [Dopunski koraci](#)

Procedura

1. Gurnite kabl ekrana u konektor na zadnjem poklopcu ekrana i pritisnite rezu da biste učvrstili kabl.
2. Zalepite traku kojom je kabl ekrana pričvršćen za zadnji poklopac ekrana.
3. Okrenite ploču ekrana i postavite je na zadnji poklopac ekrana.
4. Poravnajte otvore za zavrtnje na ploči ekrana sa otvorima za zavrtnje na zadnjem poklopcu ekrana.
5. Postavite zavrtnje kojima je ploča ekrana pričvršćena za zadnji poklopac ekrana.

Dopunski koraci

1. Postavite [okno ekrana](#).
2. Postavite [sklop ekrana](#).
3. Sledite proceduru od koraka 3 do koraka 10 u delu "Postavljanje [matične ploče](#)".
4. Sledite proceduru od koraka 2 do koraka 6 u delu "Postavljanje [oslonca za dlanove](#)".
5. Postavite [tastaturu](#).
6. Postavite [bežičnu karticu](#).
7. Postavite [memorijske module](#).
8. Sledite proceduru od koraka 3 do koraka 5 u delu "Postavljanje [čvrstog diska](#)".
9. Postavite [osnovnu ploču](#).
10. Postavite [bateriju](#).

Uklanjanje kamere

i **NAPOMENA** Before working inside your computer, read the safety information that shipped with your computer and follow the steps in [Before working inside your computer](#). After working inside your computer, follow the instructions in [After working inside your computer](#). For more safety best practices, see the Regulatory Compliance home page at www.dell.com/regulatory_compliance.

Teme:

- [Prerequisites](#)
- [Procedura](#)

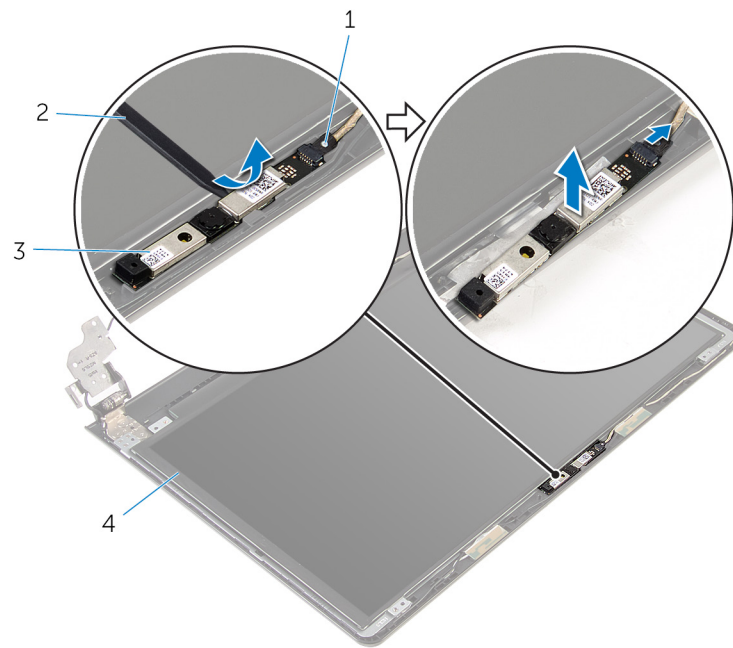
Prerequisites

i **NOTE:** These instructions are applicable only for laptops with a non-touch screen display.

1. Remove the [battery](#).
2. Remove the [base panel](#).
3. Follow the procedure from step 1 to step 3 in “Removing the [hard drive](#)”.
4. Remove the [memory modules](#).
5. Remove the [wireless card](#).
6. Remove the [keyboard](#).
7. Remove the [palm rest](#).
8. Remove the [system board](#).
9. Remove the [display assembly](#).
10. Remove the [display bezel](#).

Procedura

1. Pomoću plastične olovke pažljivo odvojite kameru od zadnjeg poklopca ekrana.
2. Odspojite kabl kamere sa kamere.



- 1. kabl kamere
- 3. kamera

- 2. plastična olovka

Postavljanje kamere

i **NAPOMENA** Before working inside your computer, read the safety information that shipped with your computer and follow the steps in [Before working inside your computer](#). After working inside your computer, follow the instructions in [After working inside your computer](#). For more safety best practices, see the Regulatory Compliance home page at www.dell.com/regulatory_compliance.

Teme:

- [Dopunski koraci](#)
- [Procedura](#)

Dopunski koraci

1. Postavite [okno ekrana](#).
2. Postavite [sklop ekrana](#).
3. Postavite [matičnu ploču](#).
4. Postavite [oslonac za dlanove](#).
5. Postavite [tastaturu](#).
6. Postavite [bežičnu karticu](#).
7. Postavite [memorijske module](#).
8. Sledite proceduru od koraka 3 do koraka 5 u delu "Postavljanje [čvrstog diska](#)".
9. Postavite [osnovnu ploču](#).
10. Postavite [bateriju](#).

Procedura

1. Povežite kabl kamere na kameru.
2. Poravnajte kameru na stubu za poravnanje na zadnjem poklopcu ekrana i postavite kameru na mesto.

Uklanjanje zglobova ekrana

i **NAPOMENA** Before working inside your computer, read the safety information that shipped with your computer and follow the steps in [Before working inside your computer](#). After working inside your computer, follow the instructions in [After working inside your computer](#). For more safety best practices, see the Regulatory Compliance home page at www.dell.com/regulatory_compliance.

Teme:

- [Prerequisites](#)
- [Procedura](#)

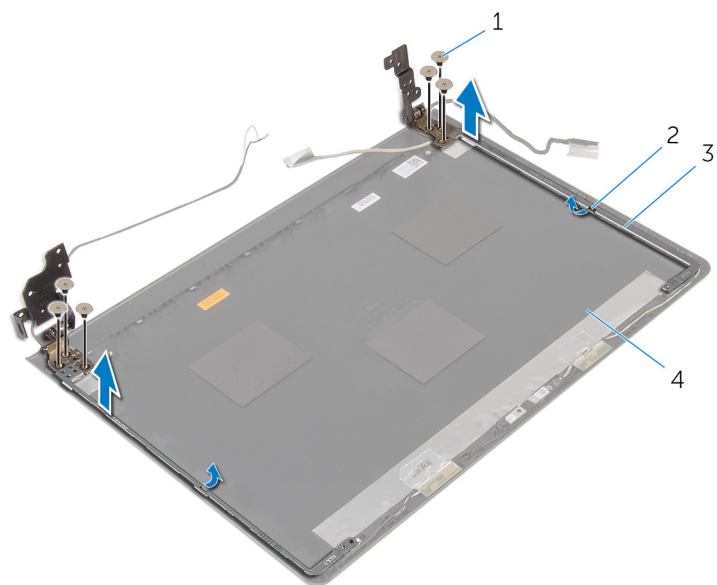
Prerequisites

i **NOTE:** These instructions are applicable only for laptops with a non-touch screen display.

1. Remove the [battery](#).
2. Remove the [base panel](#).
3. Follow the procedure from step 1 to step 3 in “Removing the [hard drive](#)”.
4. Remove the [memory modules](#).
5. Remove the [wireless card](#).
6. Remove the [keyboard](#).
7. Follow the procedure from step 1 to step 8 in “Removing the [palm rest](#)”.
8. Follow the procedure from step 1 to step 8 in “Removing the [system board](#)”.
9. Remove the [display assembly](#).
10. Remove the [display panel](#).
11. Remove the [display bezel](#).

Procedura

1. Uklonite zavrtnje kojima su zglobovi ekrana pričvršćeni za zadnji poklopac ekrana.
2. Oslobodite zglobove iz reza i podignite zglobove ekrana sa zadnjeg poklopca ekrana.



1. zavrtnji (6)

3. zglobovi ekrana (2)

2. reze (2)

4. zadnji poklopac ekrana

Postavljanje zglobova ekrana

ⓘ NAPOMENA Before working inside your computer, read the safety information that shipped with your computer and follow the steps in [Before working inside your computer](#). After working inside your computer, follow the instructions in [After working inside your computer](#). For more safety best practices, see the Regulatory Compliance home page at www.dell.com/regulatory_compliance.

Teme:

- [Procedura](#)
- [Dopunski koraci](#)

Procedura


1. Gurnite zglobove ispod reza na zadnjem poklopcu ekrana.
2. Poravnajte otvore za zavrtnje na zglobovima ekrana sa otvorima za zavrtnje na zadnjem poklopcu ekrana.
3. Postavite zavrtnje koji pričvršćuju zglobove ekrana za zadnji poklopac ekrana.

Dopunski koraci

1. Postavite [okno ekrana](#).
2. Postavite [ploču ekrana](#).
3. Postavite [sklop ekrana](#).
4. Sledite proceduru od koraka 3 do koraka 10 u delu "Postavljanje [matične ploče](#)".
5. Sledite proceduru od koraka 2 do koraka 6 u delu "Postavljanje [oslonca za dlanove](#)".
6. Postavite [tastaturu](#).
7. Postavite [bežičnu karticu](#).
8. Postavite [memorijske module](#).
9. Sledite proceduru od koraka 3 do koraka 5 u delu "Postavljanje [čvrstog diska](#)".
10. Postavite [osnovnu ploču](#).
11. Postavite [bateriju](#).

Ažuriranje BIOS-a

Možda ćete morati da ažurirate BIOS kada je dostupna njegova dopuna ili kada menjate matičnu ploču. Da biste ažurirali BIOS:

1. Uključite računar.
2. Idite na www.dell.com/support.
3. Kliknite na **Product Support (Podrška za proizvod)**, unesite servisnu oznaku vašeg računara i kliknite na **Submit (Pošalji)**.
 **NAPOMENA** Ako nemate servisnu oznaku, koristite funkciju automatskog pronalaženja ili ručno potražite model računara.
4. Kliknite na **Drivers & Downloads (Programi i preuzimanja)**.
5. Izaberite operativni sistem koji je instaliran na vašem računaru.
6. Pomerite klizač ka dnu stranice i proširite **BIOS**.
7. Kliknite na **Download File (Preuzmite datoteku)** da biste preuzeli najnoviju verziju BIOS-a za vaš računar.
8. Sačuvajte datoteku i kada se preuzimanje završi, pronađite fasciklu u kojoj ste sačuvali datoteku za ažuriranje BIOS-a.
9. Dvaput kliknite na ikonu datoteke za ažuriranje BIOS-a i sledite uputstva koja se pojavljuju na ekranu.

Dobijanje pomoći i kontaktiranje kompanije Dell

Resursi za samostalnu pomoć

Možete dobiti informacije i pomoć o proizvodima i uslugama kompanije Dell korišćenjem ovih resursa za samostalnu pomoć:

Informacije o proizvodima i uslugama kompanije Dell

Windows 8.1 i Windows 10

www.dell.com

Dell Help & Support aplikaciju



Windows 10

Get started aplikacija



Windows 8.1

Help + Tips aplikacija



Pristupanje pomoći u sistemima Windows 8, Windows 8.1 i Windows 10

U pretrazi sistema Windows, unesite **Pomoć i podrška** i pritisnite **Enter**.

Pristupanje pomoći u sistemu Windows 7

Kliknite na **Početak > Pomoć i podrška**.

Pomoć na mreži za operativni sistem

www.dell.com/support/windows

www.dell.com/support/linux

Informacije o rešavanju problema, korisnička uputstva, uputstva za konfigurisanje, specifikacije proizvoda, blogovi za tehničku pomoć, upravljački programi, ispravke softvera, itd

Posetite www.dell.com/support

Saznajte više o vašem operativnom sistemu, konfigurisanju i korišćenju računara, rezervnom kopiranju podataka, dijagnostici, itd.

Pogledajte *Ja i moj Dell* na strani **www.dell.com/support/manuals**.

Kontaktiranje kompanije Dell

Da biste kompaniju Dell kontaktirali u vezi prodaje, tehničke podrške ili korisničke podrške, posetite **www.dell.com/contactdell**.

i **NAPOMENA** Dostupnost se razlikuje u zavisnosti od zemlje i proizvoda, a neke usluge ne moraju biti dostupne u vašoj zemlji.

i **NAPOMENA** Ako nemate aktivnu vezu sa Internetom, kontakt informacije možete pronaći na fakturi, otpremnici, računuu ili katalogu Dell proizvoda.