

Inspiron 15

3000 Series

Service Manual



Opombe, svarila in opozorila

 **OPOMBA** OPOMBA označuje pomembne informacije, ki vam pomagajo bolje izkoristiti računalnik.

 **POZOR PREVIDNO** označuje možnost poškodbe strojne opreme ali izgube podatkov in vam svetuje, kako se izogniti težavi.

 **Opozorilo** OPOZORILO označuje možnost poškodb lastnine, telesnih poškodb ali smrti.

Copyright © 2015 Dell Inc. Vse pravice pridržane. Ta izdelek je zaščiten z ameriškimi (ZDA) in mednarodnimi zakoni o avtorskih pravicah ter intelektualni lastnini. Dell™ in logotip Dell sta blagovni znamki družbe Dell Inc. v Združenih državah Amerike in/ali v drugih pristojnostih. Vse druge znamke in imena, omenjene v tem dokumentu, so lahko blagovne znamke ustreznih družb.

1 Preden začnete delo v notranjosti računalnika.....	7
Preden začnete	7
Varnostna navodila.....	7
Priporočena orodja.....	8
2 After working inside your tablet.....	9
3 Odstranjevanje baterije.....	10
Procedure.....	10
4 Ponovna namestitev baterije.....	11
Postopek.....	11
5 Odstranjevanje osnovne plošče.....	12
Pred postopkom.....	12
Postopek.....	12
6 Ponovna namestitev osnovne plošče.....	13
Postopek.....	13
Po postopku.....	13
7 Odstranjevanje trdega diska.....	14
Pred postopkom.....	14
Procedure.....	14
8 Ponovna namestitev trdega diska.....	16
Postopek.....	16
Po postopku.....	16
9 Odstranjevanje pomnilniških modulov.....	17
Pred postopkom.....	17
Procedure.....	17
10 Ponovna namestitev pomnilniških modulov.....	18
Procedure.....	18
Po postopku.....	18
11 Odstranjevanje brezžične kartice.....	19
Pred postopkom.....	19
Procedure.....	19
12 Ponovna namestitev brezžične kartice.....	20
Postopek.....	20

Po postopku.....	20
13 Odstranjevanje tipkovnice.....	21
Pred postopkom.....	21
Postopek.....	21
14 Ponovna namestitev tipkovnice.....	23
Postopek.....	23
Po postopku.....	23
15 Odstranjevanje naslona za dlani.....	24
Prerequisites.....	24
Procedure.....	24
16 Ponovna namestitev naslona za dlani.....	27
Postopek.....	27
Po postopku.....	27
17 Odstranjevanje sledilne ploščice.....	28
Prerequisites.....	28
Procedure.....	28
18 Ponovna namestitev sledilne ploščice.....	30
Postopek.....	30
Po postopku.....	30
19 Odstranjevanje plošče gumba za vklop.....	31
Prerequisites.....	31
Procedure.....	31
20 Namestitev plošče gumba za vklop.....	33
Postopek.....	33
Po postopku.....	33
21 Odstranjevanje zvočnikov.....	34
Prerequisites.....	34
Procedure.....	34
22 Ponovna namestitev zvočnikov.....	36
Postopek.....	36
Po postopku.....	36
23 Odstranjevanje V/I-plošče.....	37
Prerequisites.....	37
Procedure.....	37
24 Ponovna namestitev V/I-plošče.....	38
Postopek.....	38

Po postopku.....	38
25 Odstranjevanje matične plošče.....	39
Prerequisites.....	39
Procedure.....	39
26 Ponovna namestitev matične plošče.....	42
Postopek.....	42
Po postopku.....	42
27 Odstranjevanje gumbne baterije.....	43
Prerequisites.....	43
Procedure.....	43
28 Ponovna namestitev gumbne baterije.....	44
Postopek.....	44
Post-requisites.....	44
29 Odstranjevanje hladilnika.....	45
Prerequisites.....	45
Procedure.....	45
30 Ponovna namestitev hladilnika.....	47
Postopek.....	47
Po postopku.....	47
31 Odstranjevanje ventilatorja.....	48
Prerequisites.....	48
Procedure.....	48
32 Ponovna namestitev ventilatorja.....	50
Postopek.....	50
Post-requisites.....	50
33 Odstranjevanje sklopa zaslona.....	51
Prerequisites.....	51
Postopek.....	51
34 Ponovna namestitev sklopa zaslona.....	53
Postopek.....	53
Po postopku.....	53
35 Odstranjevanje vrat za napajalnik.....	54
Prerequisites.....	54
Postopek.....	54
36 Ponovna namestitev vrat za napajalnik.....	55
Postopek.....	55

Po postopku.....	55
37 Odstranjevanje okvirja zaslona.....	56
Prerequisites.....	56
Postopek.....	56
38 Ponovna namestitev okvirja zaslona.....	57
Postopek.....	57
Po postopku.....	57
39 Odstranjevanje plošče zaslona.....	58
Prerequisites.....	58
Postopek.....	58
40 Ponovna namestitev plošče zaslona.....	60
Postopek.....	60
Po postopku.....	60
41 Odstranjevanje kamere.....	61
Prerequisites.....	61
Postopek.....	61
42 Ponovna namestitev kamere.....	63
Po postopku.....	63
Postopek.....	63
43 Odstranjevanje tečajev zaslona.....	64
Prerequisites.....	64
Postopek.....	64
44 Ponovna namestitev tečajev zaslona.....	66
Postopek.....	66
Po postopku.....	66
45 Posodobitev BIOS-a.....	67
46 Iskanje pomoči in stik z družbo Dell.....	68

Preden začnete delo v notranjosti računalnika

OPOMBA The images in this document may differ from your computer depending on the configuration you ordered.

Teme:

- Preden začnete
- Varnostna navodila
- Priporočena orodja

Preden začnete

1. Shranite in zaprite vse odprte datoteke ter zaprite vse odprte programe.
2. Zaustavite računalnik.
 - Windows 10: Kliknite ali tapnite **Start** > **Napajanje** > **Zaustavitev sistema**.
 - Windows 8.1: Na **začetnem** zaslonu tapnite ali kliknite ikono za napajanje > **Zaustavitev računalnika**.
 - Windows 7: kliknite ali tapnite **Start** > **Zaustavitev**.

OPOMBA Če uporabljate drug operacijski sistem, navodila za izklop poiščite v dokumentaciji vašega operacijskega sistema.

3. Računalnik in vse priključene izključite naprave iz električnih vtičnic.
4. Iz računalnika izključite vse telefonske kable, omrežne kable in druge kable.
5. Iz računalnika izključite vse priključene naprave, kot so tipkovnica, miška, monitor in druge naprave.
6. Iz računalnika odstranite vse pomnilniške kartice in optične pogone.

Varnostna navodila

Uporabite naslednja varnostna navodila, da zaščitite računalnik pred morebitnimi poškodbami in zagotovite svojo lastno varnost.

OPOMBA Before working inside your computer, read the safety information that shipped with your computer. For more safety best practices, see the Regulatory Compliance home page at www.dell.com/regulatory_compliance.

OPOMBA Disconnect all power sources before opening the computer cover or panels. After you finish working inside the computer, replace all covers, panels, and screws before connecting to the power source.

POZOR To avoid damaging the computer, ensure that the work surface is flat and clean.

POZOR To avoid damaging the components and cards, handle them by their edges and avoid touching pins and contacts.

POZOR You should only perform troubleshooting and repairs as authorized or directed by the Dell technical assistance team. Damage due to servicing that is not authorized by Dell is not covered by your warranty. See the safety instructions that shipped with the product or at www.dell.com/regulatory_compliance.

POZOR Before touching anything inside your computer, ground yourself by touching an unpainted metal surface, such as the metal at the back of the computer. While you work, periodically touch an unpainted metal surface to dissipate static electricity, which could harm internal components.

POZOR When you disconnect a cable, pull on its connector or on its pull tab, not on the cable itself. Some cables have connectors with locking tabs or thumb-screws that you must disengage before disconnecting the cable. When disconnecting cables, keep them evenly aligned to avoid bending any connector pins. When connecting cables, ensure that the ports and connectors are correctly oriented and aligned.

 **POZOR** Press and eject any installed card from the media-card reader.

Priporočena orodja

Za postopke, navedene v tem dokumentu, boste potrebovali naslednja orodja:

- Izvijač Phillips
- Plastično pero

After working inside your tablet

 **CAUTION:** Leaving stray or loose screws inside your computer may severely damage your computer.

1. Replace all screws and ensure that no stray screws remain inside your tablet.
2. Connect any external devices, peripherals, and cables you removed before working on your tablet.
3. Replace any media cards, discs, and any other parts that you removed before working on your tablet.
4. Connect your tablet and all attached devices to their electrical outlets.
5. Turn on your tablet.

Odstranjevanje baterije

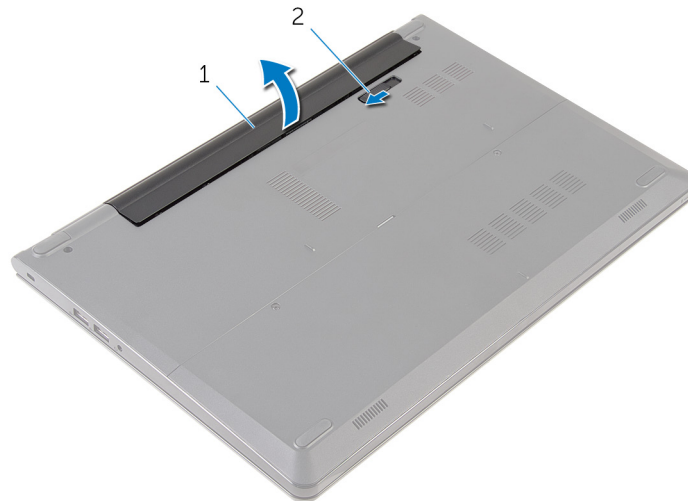
OPOMBA Before working inside your computer, read the safety information that shipped with your computer and follow the steps in [Before working inside your computer](#). After working inside your computer, follow the instructions in [After working inside your computer](#). For more safety best practices, see the Regulatory Compliance home page at www.dell.com/regulatory_compliance.

Teme:

- [Procedure](#)

Procedure

1. Close the display and turn the computer over.
2. Slide the battery-release latch to the unlock position.
3. Lift the battery at an angle and remove the battery from the battery bay.



1. battery

2. battery-release latch

4. Turn the computer over, open the display, and press the power button for five seconds to ground the system board.

Ponovna namestitev baterije

OPOMBA Before working inside your computer, read the safety information that shipped with your computer and follow the steps in [Before working inside your computer](#). After working inside your computer, follow the instructions in [After working inside your computer](#). For more safety best practices, see the Regulatory Compliance home page at www.dell.com/regulatory_compliance.

Teme:

- [Postopek](#)

Postopek

Potisnite jezičke na bateriji v reže na ležišču za baterijo ter nežno pritisnite baterijo, da se zaskoči.

OPOMBA Zapah za sprostitvev baterije gre nazaj v zaklenjen položaj, če je baterija pravilno nameščena.

Odstranjevanje osnovne plošče

OPOMBA Before working inside your computer, read the safety information that shipped with your computer and follow the steps in [Before working inside your computer](#). After working inside your computer, follow the instructions in [After working inside your computer](#). For more safety best practices, see the Regulatory Compliance home page at www.dell.com/regulatory_compliance.

Teme:

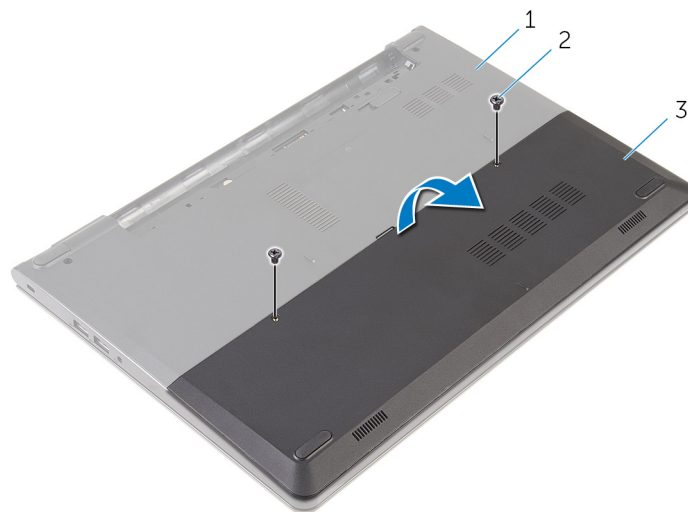
- [Pred postopkom](#)
- [Postopek](#)

Pred postopkom

Odstranite [baterijo](#).

Postopek

1. Odstranite vijake, s katerimi je osnovna plošča pritrjena na ohišje računalnika.
2. S konicami prstov nežno privzdignite osnovno ploščo z ohišja računalnika.



1. Osnova računalnika
3. spodnjo ploščo

2. Vijaka (2)

Ponovna namestitev osnovne plošče

OPOMBA Before working inside your computer, read the safety information that shipped with your computer and follow the steps in [Before working inside your computer](#). After working inside your computer, follow the instructions in [After working inside your computer](#). For more safety best practices, see the Regulatory Compliance home page at www.dell.com/regulatory_compliance.

Teme:

- [Postopek](#)
- [Po postopku](#)

Postopek

1. Jezičke na osnovni plošči potisnite v reže na ohišju računalnika in osnovno ploščo nežno pritisnite na ustrezno mesto.
2. Namestite vijake, s katerimi je osnovna plošča pritrjena na ohišje računalnika.

Po postopku

Ponovno namestite [baterijo](#).

Odstranjevanje trdega diska

OPOMBA Before working inside your computer, read the safety information that shipped with your computer and follow the steps in [Before working inside your computer](#). After working inside your computer, follow the instructions in [After working inside your computer](#). For more safety best practices, see the Regulatory Compliance home page at www.dell.com/regulatory_compliance.

POZOR Hard drives are fragile. Exercise care when handling the hard drive.

POZOR To avoid data loss, do not remove the hard drive while the computer is in sleep or on state.

Teme:

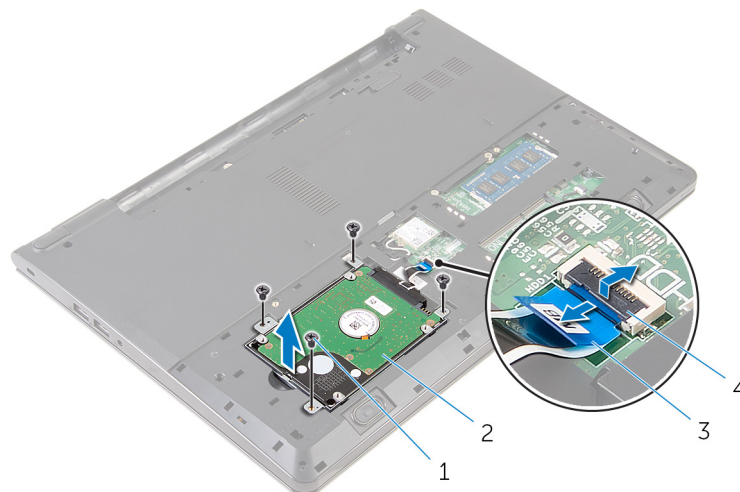
- [Pred postopkom](#)
- [Procedure](#)

Pred postopkom

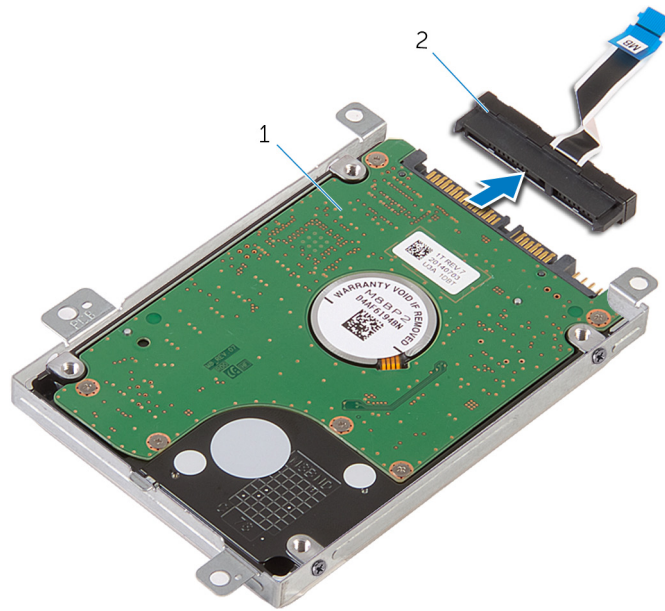
1. Odstranite [baterijo](#).
2. Odstranite [osnovno ploščo](#).

Procedure

1. Remove the screws that secure the hard-drive assembly to the computer base.
2. Lift the latch and disconnect the hard-drive cable from the system board.
3. Lift the hard-drive assembly off the computer base.



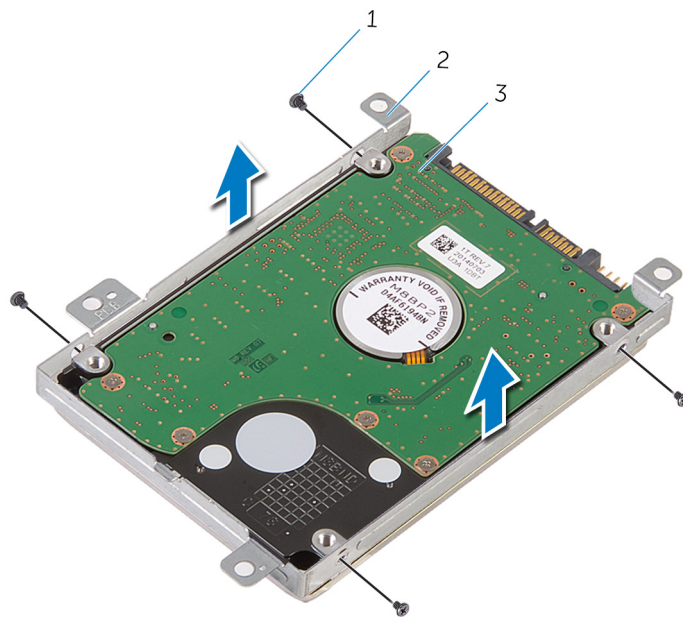
- | | |
|---------------------|------------------------|
| 1. screws (4) | 2. hard-drive assembly |
| 3. hard-drive cable | 4. latch |
4. Disconnect the interposer from the hard drive.



1. hard-drive assembly

2. interposer

5. Remove the screws that secure the hard-drive bracket to the hard drive and lift the hard-drive bracket off the hard drive.




1. screws (4)

2. hard-drive bracket

3. hard drive

Ponovna namestitev trdega diska

 **OPOMBA** Before working inside your computer, read the safety information that shipped with your computer and follow the steps in [Before working inside your computer](#). After working inside your computer, follow the instructions in [After working inside your computer](#). For more safety best practices, see the Regulatory Compliance home page at www.dell.com/regulatory_compliance.

 **POZOR** Hard drives are fragile. Exercise care when handling the hard drive.

Teme:

- [Postopek](#)
- [Po postopku](#)

Postopek

1. Namestite nosilec trdega diska na trdi disk in poravnajte odprtine za vijake na nosilcu trdega diska z odprtinami za vijake na trdem disku.
2. Ponovno namestite vijake, s katerimi je nosilec trdega diska pritrjen na trdi disk.
3. Potisnite sklop trdega diska v ohišje računalnika in poravnajte odprtine za vijake na sklopu trdega diska z odprtinami za vijake na ohišju računalnika.
4. Priključite kabel trdega diska na trdi disk.
5. Ponovno namestite vijake, s katerimi je sklop trdega diska pritrjen na osnovo računalnika.

Po postopku

1. Ponovno namestite [osnovno ploščo](#).
2. Ponovno namestite [baterijo](#).

Odstranjevanje pomnilniških modulov

OPOMBA Before working inside your computer, read the safety information that shipped with your computer and follow the steps in [Before working inside your computer](#). After working inside your computer, follow the instructions in [After working inside your computer](#). For more safety best practices, see the Regulatory Compliance home page at www.dell.com/regulatory_compliance.

Teme:

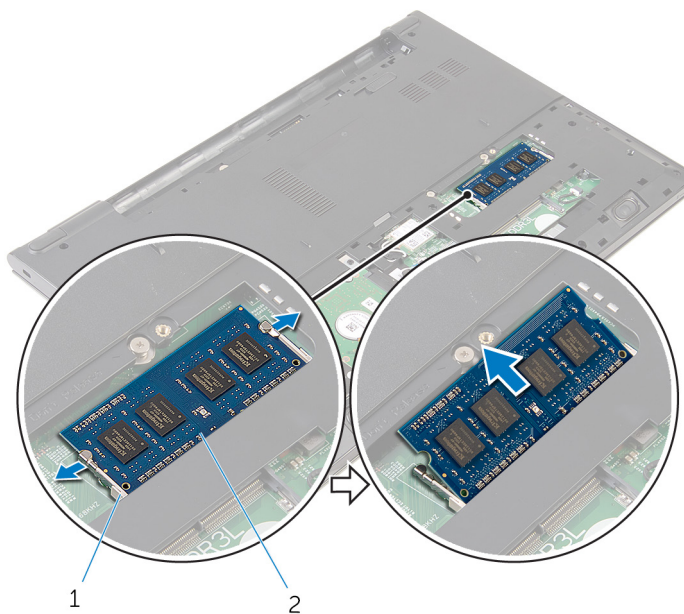
- [Pred postopkom](#)
- [Procedure](#)

Pred postopkom

1. Odstranite [baterijo](#).
2. Odstranite [osnovno ploščo](#).

Procedure

1. Using your fingertips, pry apart the securing clips on each end of the memory-module slot until the memory module pops up.
2. Slide and remove the memory module from the memory-module slot.



1. securing clips

2. memory module

Ponovna namestitev pomnilniških modulov

OPOMBA Before working inside your computer, read the safety information that shipped with your computer and follow the steps in [Before working inside your computer](#). After working inside your computer, follow the instructions in [After working inside your computer](#). For more safety best practices, see the Regulatory Compliance home page at www.dell.com/regulatory_compliance.

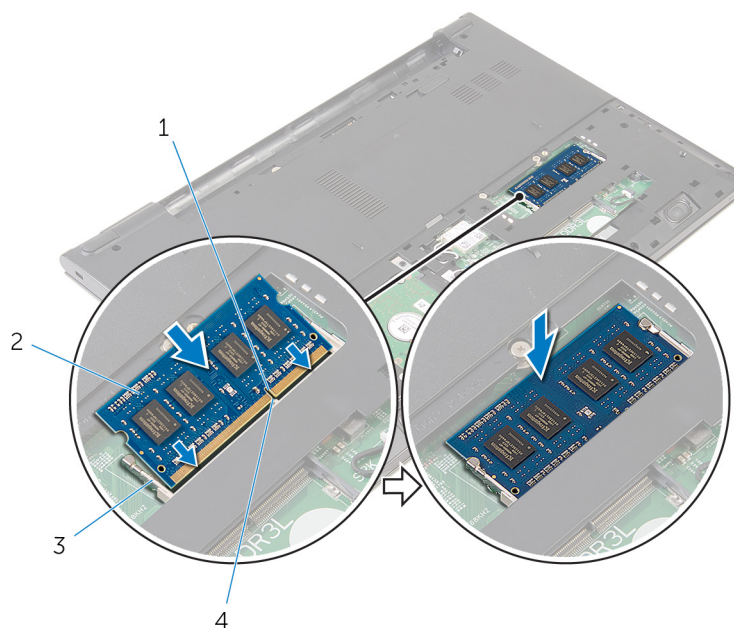
Teme:

- [Procedure](#)
- [Po postopku](#)

Procedure

1. Align the notch on the memory module with the tab on the memory-module slot.
2. Slide the memory module firmly into the slot at an angle and press the memory module down until it clicks into place.

NOTE: If you do not hear the click, remove the memory module and reinstall it.



1. notch
3. securing clips

2. memory module
4. tab

Po postopku

1. Ponovno namestite [osnovno ploščo](#).
2. Ponovno namestite [baterijo](#).

Odstranjevanje brezžične kartice

OPOMBA Before working inside your computer, read the safety information that shipped with your computer and follow the steps in [Before working inside your computer](#). After working inside your computer, follow the instructions in [After working inside your computer](#). For more safety best practices, see the Regulatory Compliance home page at www.dell.com/regulatory_compliance.

Teme:

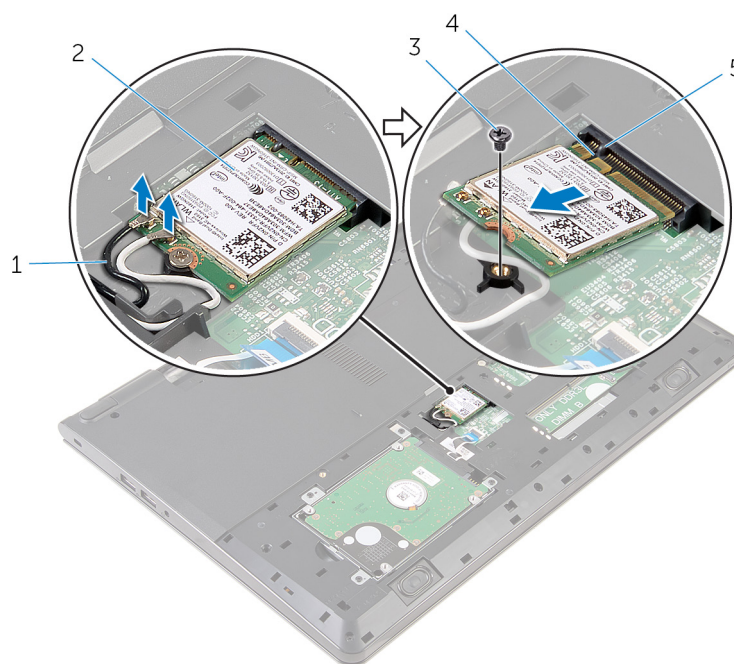
- [Pred postopkom](#)
- [Procedure](#)

Pred postopkom

1. Odstranite [baterijo](#).
2. Odstranite [osnovno ploščo](#).

Procedure

1. Disconnect the antenna cables from the wireless card.
2. Remove the screw that secures the wireless card to the system board.
3. Lift the wireless card, and then slide and remove it from the system board.



- | | |
|-----------------------|------------------|
| 1. antenna cables (2) | 2. wireless card |
| 3. screw | 4. notch |
| 5. tab | |

Ponovna namestitev brezžične kartice

OPOMBA Before working inside your computer, read the safety information that shipped with your computer and follow the steps in [Before working inside your computer](#). After working inside your computer, follow the instructions in [After working inside your computer](#). For more safety best practices, see the Regulatory Compliance home page at www.dell.com/regulatory_compliance.

Teme:

- [Postopek](#)
- [Po postopku](#)

Postopek

POZOR Ne postavljajte kablov pod brezžično kartico, da je ne poškodujete.

1. Zarezo na brezžični kartici poravnajte z jezičkom na reži za brezžično kartico in nato potisnite kartico v režo.
2. Ponovno namestite vijak, s katerim je brezžična kartica pritrjena na matično ploščo.
3. Antenske kable priključite na brezžično kartico. V spodnji tabeli je prikazana barvna shema antenskih kablov za brezžično kartico, ki jo podpira vaš računalnik:

Connectors on the wireless card	Antenna-cable color
Main (white triangle)	White
Auxiliary (black triangle)	Black

Po postopku

1. Ponovno namestite [osnovno ploščo](#).
2. Ponovno namestite [baterijo](#).

Odstranjevanje tipkovnice

OPOMBA Before working inside your computer, read the safety information that shipped with your computer and follow the steps in **Before working inside your computer**. After working inside your computer, follow the instructions in **After working inside your computer**. For more safety best practices, see the Regulatory Compliance home page at www.dell.com/regulatory_compliance.

Teme:

- Pred postopkom
- Postopek

Pred postopkom

Odstranite baterijo.

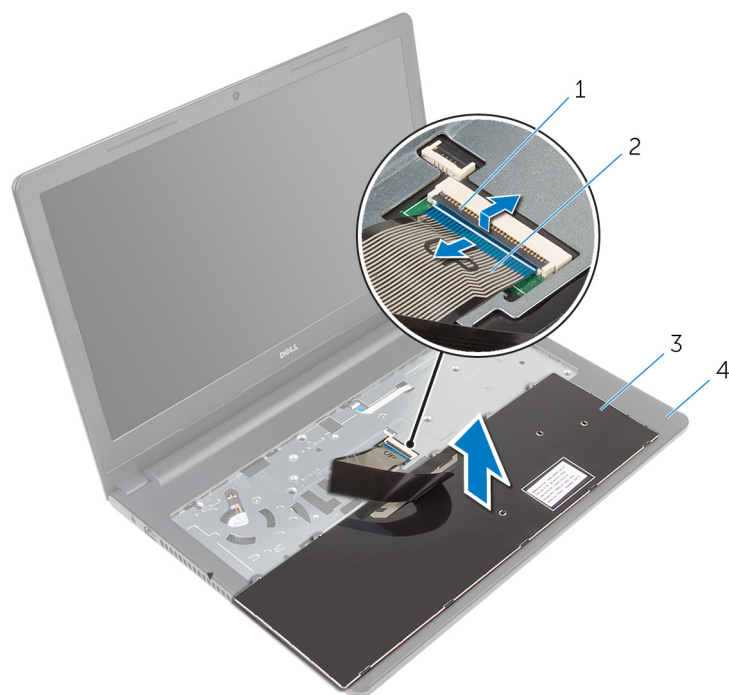
Postopek

1. Obrnite računalnik in odprite zaslon, kolikor je mogoče.
2. S plastičnim peresom nežno sprostite jezičke, s katerimi je tipkovnica pritrjena na sklop naslona za dlani.



1. Jeziček
 2. Plastično pero
 3. Tipkovnica
 4. Sklop naslona za dlani
3. Previdno obrnite tipkovnico in jo postavite na sklop naslona za dlani.
 4. Dvignite zapuhe in odklopite kabel tipkovnice in kabel za osvetlitev ozadja tipkovnice s sistemske plošče.

OPOMBA Kabel za osvetlitev tipkovnice je na voljo le, če je prenosni računalnik opremljen z osvetljeno tipkovnico.



1. Zapah
2. Kabel tipkovnice
3. Tipkovnica
4. Sklop naslona za dlani
5. Tipkovnico skupaj s kabloma dvignite s sklopa naslona za dlani.

Ponovna namestitev tipkovnice

OPOMBA Before working inside your computer, read the safety information that shipped with your computer and follow the steps in [Before working inside your computer](#). After working inside your computer, follow the instructions in [After working inside your computer](#). For more safety best practices, see the Regulatory Compliance home page at www.dell.com/regulatory_compliance.

Teme:

- [Postopek](#)
- [Po postopku](#)

Postopek

1. Kabel tipkovnice potisnite v režo matične plošče in pritisnite na zapah, da pritrdite kabel.
2. Previdno obrnite tipkovnico, zatiče tipkovnice potisnite v reže na sklopu naslona za dlani in tipkovnico pritrdite na pravo mesto.
3. Zaprite zaslon in obrnite računalnik.

Po postopku

Ponovno namestite [baterijo](#).

Odstranjevanje naslona za dlani

OPOMBA Before working inside your computer, read the safety information that shipped with your computer and follow the steps in [Before working inside your computer](#). After working inside your computer, follow the instructions in [After working inside your computer](#). For more safety best practices, see the Regulatory Compliance home page at www.dell.com/regulatory_compliance.

Teme:

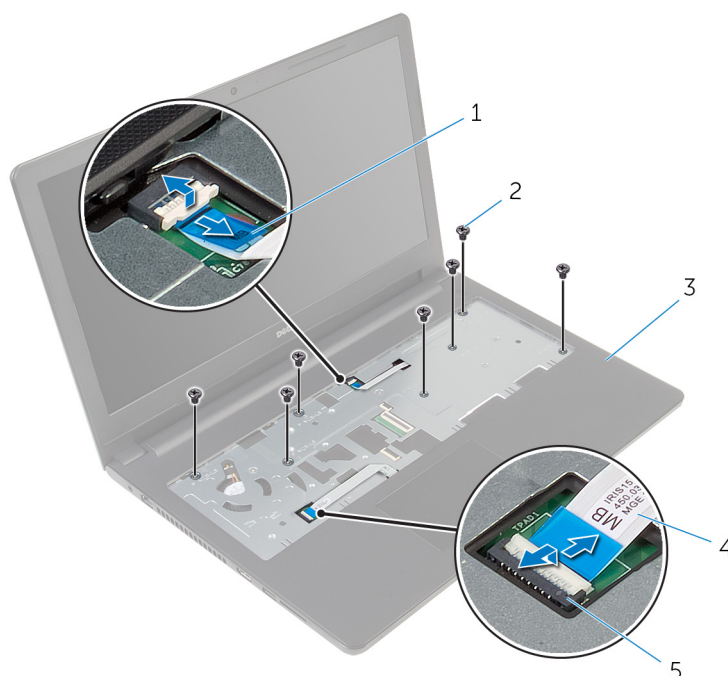
- [Prerequisites](#)
- [Procedure](#)

Prerequisites

1. Remove the [battery](#).
2. Remove the [base panel](#).
3. Follow the procedure from step 1 to step 3 in "Removing the [hard drive](#)".
4. Remove the [keyboard](#).

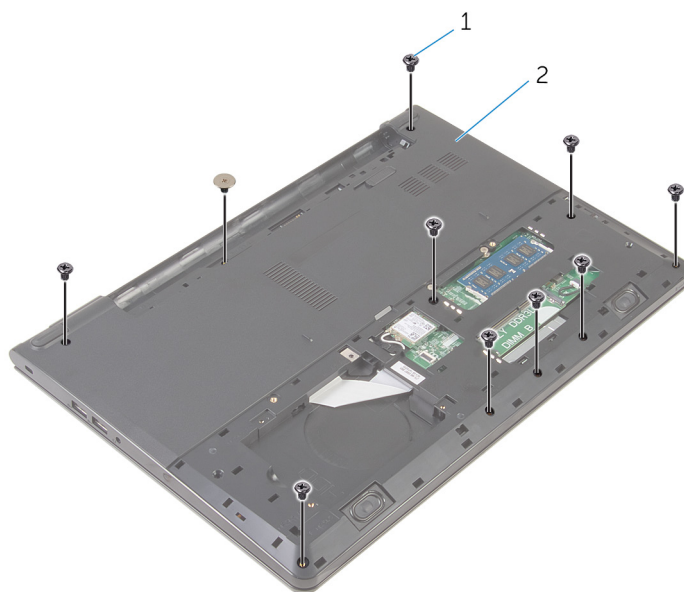
Procedure

1. Lift the latch and disconnect the touch-pad cable from the system board.
2. Lift the latch and disconnect the power-button cable from the system board.
3. Remove the screws that secure the palm-rest assembly to the computer base.



- | | |
|-----------------------|--------------------|
| 1. power-button cable | 2. screws (7) |
| 3. palm-rest assembly | 4. touch-pad cable |
| 5. latch | |

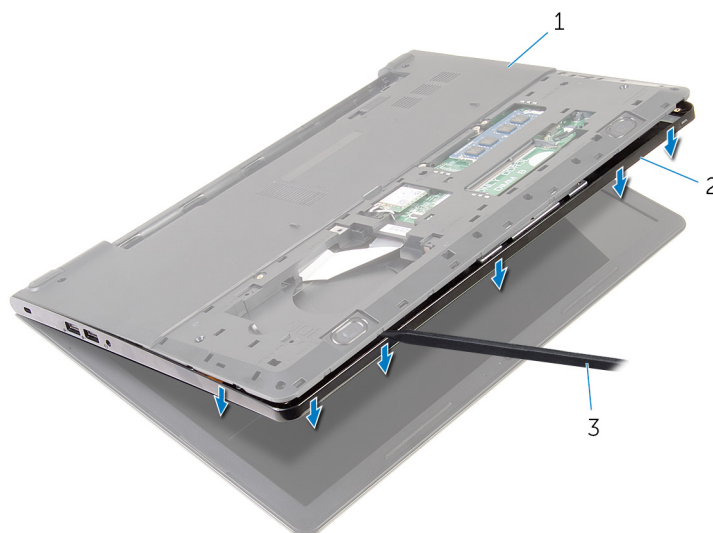
4. Close the display and turn the computer over.
5. Remove the screws that secure the palm-rest assembly to the computer base.



1. screws (10)

2. computer base

6. Slightly open the computer base and, using a plastic scribe, pry the palm-rest assembly off the computer base.



1. computer base

2. palm-rest assembly

3. plastic scribe

7. Turn the computer over and open the display.
8. Lift the palm-rest assembly off the computer base.



1. palm-rest assembly

2. computer base

9. Follow the procedure from step 1 to step 5 in “Removing the [touch pad](#)”.

Ponovna namestitev naslona za dlani

OPOMBA Before working inside your computer, read the safety information that shipped with your computer and follow the steps in [Before working inside your computer](#). After working inside your computer, follow the instructions in [After working inside your computer](#). For more safety best practices, see the Regulatory Compliance home page at www.dell.com/regulatory_compliance.

Teme:

- [Postopek](#)
- [Po postopku](#)

Postopek

1. Upoštevajte navodila od 1. do 5. koraka v poglavju »Ponovna namestitev [sledilne ploščice](#)«.
2. Odprtine za vijake na naslonu za dlani poravnajte z odprtinami za vijake na osnovni plošči računalnika in nato naslon za dlani potisnite na svoje mesto.
3. Ponovno namestite vijake, s katerimi je naslon za dlani pritrjen na ohišje računalnika.
4. Kabel sledilne ploščice in kabel gumba za vklop potisnite v ustrezna priključka in pritisnite na zapaha, da kabla pritrdite.
5. Obrnite računalnik.
6. Ponovno namestite vijake, s katerimi je naslon za dlani pritrjen na hrbtni pokrov.

Po postopku

1. Ponovno namestite [tipkovnico](#).
2. Upoštevajte navodila od 3. do 5. koraka v poglavju »Ponovna namestitev [trdega diska](#)«.
3. Ponovno namestite [osnovno ploščo](#).
4. Ponovno namestite [baterijo](#).

Odstranjevanje sledilne ploščice

OPOMBA Before working inside your computer, read the safety information that shipped with your computer and follow the steps in [Before working inside your computer](#). After working inside your computer, follow the instructions in [After working inside your computer](#). For more safety best practices, see the Regulatory Compliance home page at www.dell.com/regulatory_compliance.

Teme:

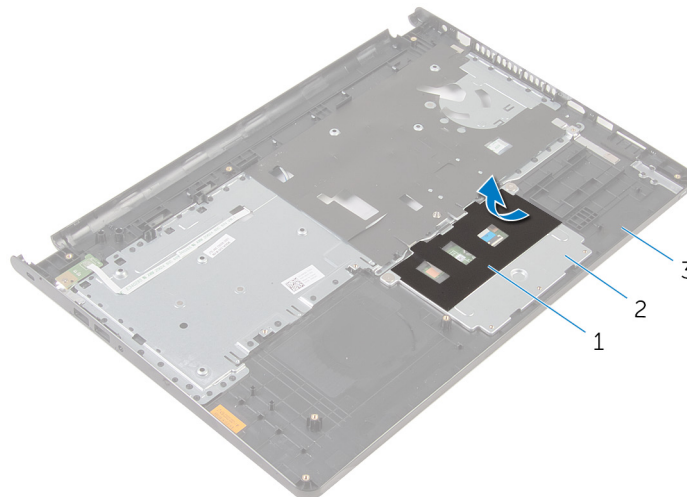
- [Prerequisites](#)
- [Procedure](#)

Prerequisites

1. Remove the [battery](#).
2. Remove the [base panel](#).
3. Follow the procedure from step 1 to step 3 in “Removing the [hard drive](#)”.
4. Remove the [keyboard](#).
5. Remove the [palm rest](#).

Procedure

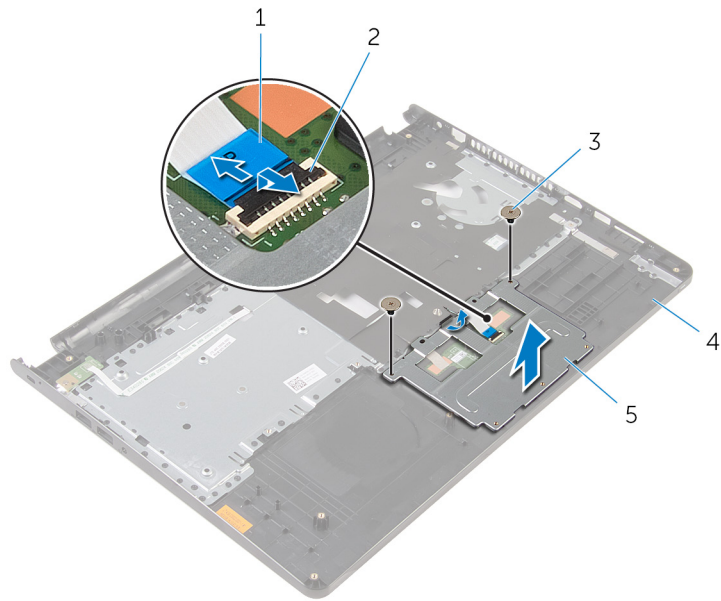
1. Peel the tape off the touch-pad bracket.



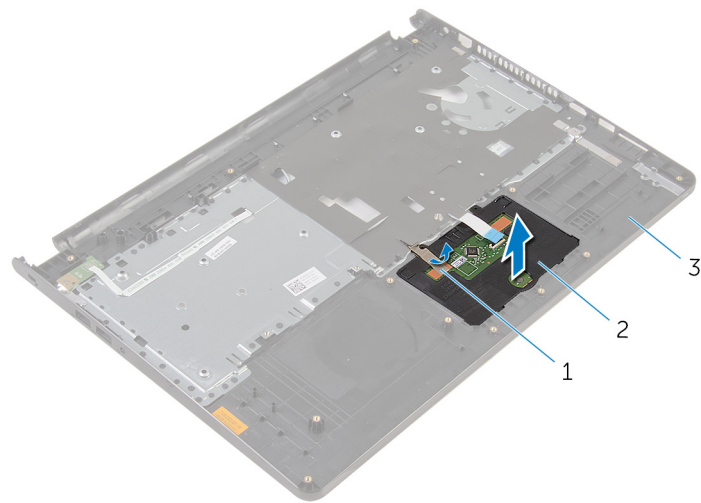
1. tape
3. palm rest

2. touch-pad bracket

2. Remove the screws that secure the touch-pad bracket to the touch pad.
3. Lift the latch and disconnect the touch-pad cable from touch pad.



- 1. touch-pad cable
 - 2. latch
 - 3. screws (2)
 - 4. palm rest
 - 5. touch-pad bracket
4. Peel off the tape over the touch pad.
 5. Lift the touch pad off the palm rest.



- 1. tape
- 2. touch pad
- 3. palm rest

Ponovna namestitev sledilne ploščice

OPOMBA Before working inside your computer, read the safety information that shipped with your computer and follow the steps in [Before working inside your computer](#). After working inside your computer, follow the instructions in [After working inside your computer](#). For more safety best practices, see the Regulatory Compliance home page at www.dell.com/regulatory_compliance.

Teme:

- [Postopek](#)
- [Po postopku](#)

Postopek

1. Jezičke na sledilni ploščici potisnite v reže na naslonu za dlani.
2. Prilepite trak, s katerim je sledilna ploščica pritrjena na naslon za dlani.
3. Poravnajte luknje za vijake na nosilcu sledilne ploščice z luknjami za vijake na naslonu za dlani.
4. Ponovno namestite vijake, s katerimi je nosilec sledilne ploščice pritrjen na naslon za dlani.
5. Prilepite trak čez nosilec sledilne ploščice.

Po postopku

1. Ponovno namestite [naslon za dlani](#).
2. Ponovno namestite [tipkovnico](#).
3. Upoštevajte navodila od 4. do 6. koraka v poglavju »Ponovna namestitev [trdega diska](#)«.
4. Ponovno namestite [osnovno ploščo](#).
5. Ponovno namestite [baterijo](#).

Odstranjevanje plošče gumba za vklop

OPOMBA Before working inside your computer, read the safety information that shipped with your computer and follow the steps in [Before working inside your computer](#). After working inside your computer, follow the instructions in [After working inside your computer](#). For more safety best practices, see the Regulatory Compliance home page at www.dell.com/regulatory_compliance.

Teme:

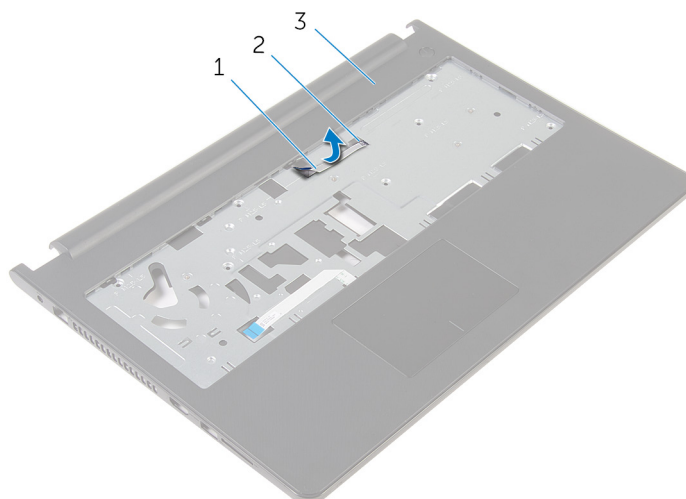
- [Prerequisites](#)
- [Procedure](#)

Prerequisites

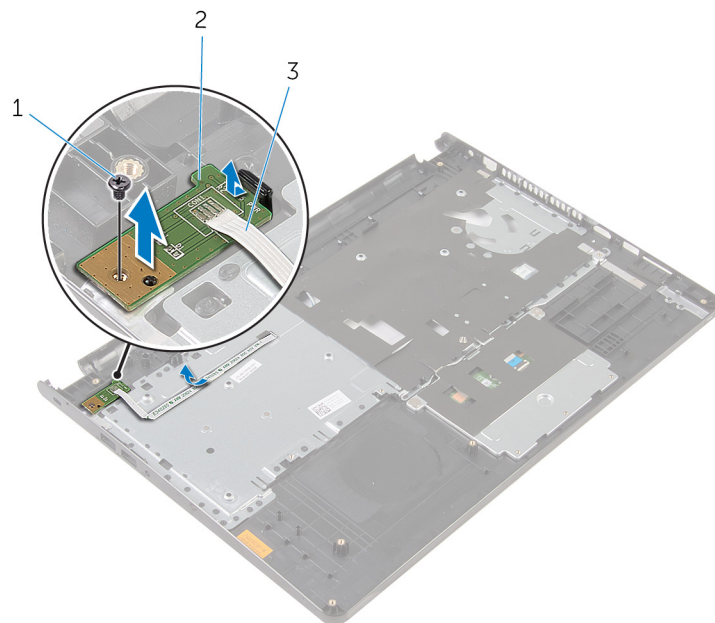
1. Remove the [battery](#).
2. Remove the [base panel](#).
3. Follow the procedure from step 1 to step 3 in “Removing the [hard drive](#)”.
4. Remove the [keyboard](#).
5. Follow the procedure from step 1 to step 8 in “Removing the [palm rest](#)”.

Procedure

1. Slide the power-button board cable through the slot on the palm rest.



- | | |
|-----------------------------|---------|
| 1. power-button board cable | 2. slot |
| 3. palm rest | |
2. Turn the palm rest over.
 3. Remove the screw that secures the power-button board to the palm rest.
 4. Slide the power-button board out from the tab on the palm rest.
 5. Lift the power-button board, along with its cable, off the palm rest.



1. screw

3. power-button board cable

2. power-button board

Namestitev plošče gumba za vklop

OPOMBA Before working inside your computer, read the safety information that shipped with your computer and follow the steps in [Before working inside your computer](#). After working inside your computer, follow the instructions in [After working inside your computer](#). For more safety best practices, see the Regulatory Compliance home page at www.dell.com/regulatory_compliance.

Teme:

- [Postopek](#)
- [Po postopku](#)

Postopek

1. Potisnite ploščo gumba za vklop pod jeziček na naslonu za dlani in poravnajte odprtino za vijak na plošči gumba za vklop z odprtino za vijak na naslonu za dlani.
2. Znova namestite vijak, s katerim je plošča gumba za vklop pritrjena na naslon za dlani.
3. Potisnite kabel plošče gumba za vklop skozi režo na naslonu za dlani.

Po postopku

1. Upoštevajte navodila od 2. do 6. koraka v poglavju »Ponovna namestitev [naslona za dlani](#)«.
2. Ponovno namestite [tipkovnico](#).
3. Upoštevajte navodila od 4. do 6. koraka v poglavju »Ponovna namestitev [trdega diska](#)«.
4. Ponovno namestite [osnovno ploščo](#).
5. Ponovno namestite [baterijo](#).

Odstranjevanje zvočnikov

OPOMBA Before working inside your computer, read the safety information that shipped with your computer and follow the steps in [Before working inside your computer](#). After working inside your computer, follow the instructions in [After working inside your computer](#). For more safety best practices, see the Regulatory Compliance home page at www.dell.com/regulatory_compliance.

Teme:

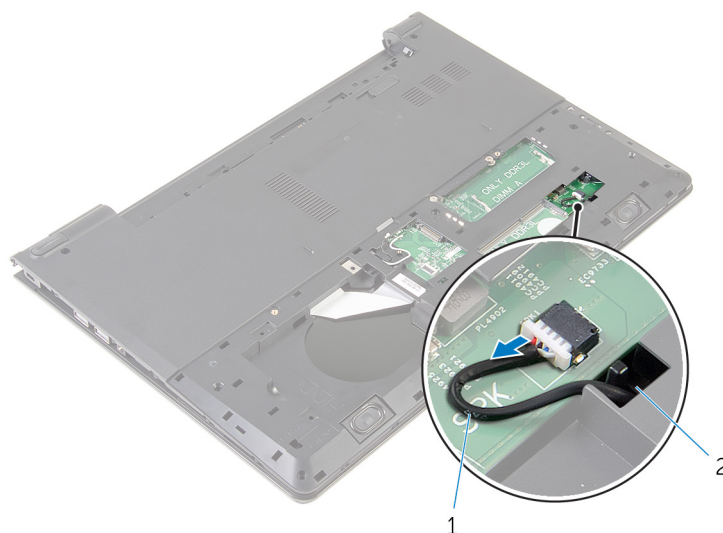
- [Prerequisites](#)
- [Procedure](#)

Prerequisites

1. Remove the [battery](#).
2. Remove the [base panel](#).
3. Follow the procedure from step 1 to step 3 in “Removing the [hard drive](#)”.
4. Remove the [keyboard](#).
5. Follow the procedure from step 1 to step 8 in “Removing the [palm rest](#)”.

Procedure

1. Disconnect the speaker cable from the system board.



1. speaker cable

2. slot

2. Turn the computer over and open the display.
3. Note the speaker-cable routing and remove the cable from the routing guides on the computer base.
4. Slide the speaker cable through the slot on the computer base and lift the speakers, along with the speaker cable, off the computer base .



1. speaker cable

2. speakers (2)

Ponovna namestitev zvočnikov

OPOMBA Before working inside your computer, read the safety information that shipped with your computer and follow the steps in [Before working inside your computer](#). After working inside your computer, follow the instructions in [After working inside your computer](#). For more safety best practices, see the Regulatory Compliance home page at www.dell.com/regulatory_compliance.

Teme:

- [Postopek](#)
- [Po postopku](#)

Postopek

1. S pomočjo oznak za poravnavo poravnajte in namestite zvočnika na naslon za dlani.
2. Kabel zvočnikov speljite skozi vodila na naslonu za dlani.
3. Obrnite računalnik.
4. Potisnite kabel zvočnikov skozi režo na ohišju računalnika in priključite kabel zvočnikov v matično ploščo.

Po postopku

1. Upoštevajte navodila od 2. do 6. koraka v poglavju »Ponovna namestitev [naslona za dlani](#)«.
2. Ponovno namestite [tipkovnico](#).
3. Upoštevajte navodila od 3. do 5. koraka v poglavju »Ponovna namestitev [trdega diska](#)«.
4. Ponovno namestite [osnovno ploščo](#).
5. Ponovno namestite [baterijo](#).

Odstranjevanje V/I-plošče

OPOMBA Before working inside your computer, read the safety information that shipped with your computer and follow the steps in [Before working inside your computer](#). After working inside your computer, follow the instructions in [After working inside your computer](#). For more safety best practices, see the Regulatory Compliance home page at www.dell.com/regulatory_compliance.

Teme:

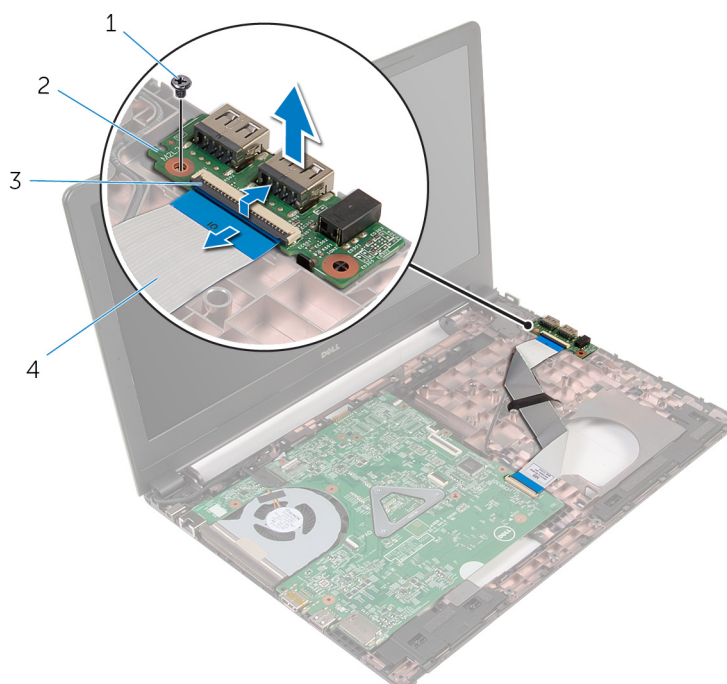
- [Prerequisites](#)
- [Procedure](#)

Prerequisites

1. Remove the [battery](#).
2. Remove the [base panel](#).
3. Follow the procedure from step 1 to step 3 in “Removing the [hard drive](#)”.
4. Remove the [keyboard](#).
5. Follow the procedure from step 1 to step 8 in “Removing the [palm rest](#)”.

Procedure

1. Lift the latch and disconnect the I/O-board cable from the I/O board.
2. Remove the screw that secures the I/O board to the computer base.
3. Lift the I/O board off the computer base.



- | | |
|----------|--------------------|
| 1. screw | 2. I/O board |
| 3. latch | 4. I/O-board cable |

Ponovna namestitev V/I-plošče

OPOMBA Before working inside your computer, read the safety information that shipped with your computer and follow the steps in [Before working inside your computer](#). After working inside your computer, follow the instructions in [After working inside your computer](#). For more safety best practices, see the Regulatory Compliance home page at www.dell.com/regulatory_compliance.

Teme:

- [Postopek](#)
- [Po postopku](#)

Postopek

1. Poravnajte odprtino za vijak na V/I-plošči z odprtino za vijak na ohišju računalnika.
2. Ponovno namestite vijak, s katerim je V/I-plošča pritrjena na osnovo računalnika.
3. Kabel V/I-plošče potisnite v priključek na V/I-plošči ter pritisnite na zapah, da pritrdite kabel.

Po postopku

1. Upoštevajte navodila od 2. do 6. koraka v poglavju »Ponovna namestitev [naslona za dlani](#)«.
2. Ponovno namestite [tipkovnico](#).
3. Upoštevajte navodila od 3. do 5. koraka v poglavju »Ponovna namestitev [trdega diska](#)«.
4. Ponovno namestite [osnovno ploščo](#).
5. Ponovno namestite [baterijo](#).

Odstranjevanje matične plošče

- i** **OPOMBA** Before working inside your computer, read the safety information that shipped with your computer and follow the steps in [Before working inside your computer](#). After working inside your computer, follow the instructions in [After working inside your computer](#). For more safety best practices, see the Regulatory Compliance home page at www.dell.com/regulatory_compliance.
- i** **OPOMBA** Your computer's Service Tag is stored in the system board. You must enter the Service Tag in the BIOS setup program after you replace the system board.
- i** **OPOMBA** Replacing the system board removes any changes you have made to the BIOS using the BIOS setup program. You must make the desired changes again after you replace the system board.
- i** **OPOMBA** Before disconnecting the cables from the system board, note the location of the connectors so that you can reconnect the cables correctly after you replace the system board.

Teme:

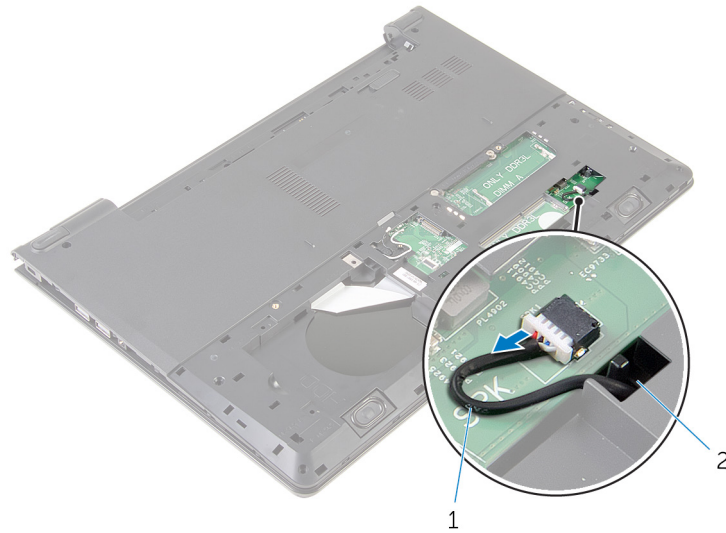
- [Prerequisites](#)
- [Procedure](#)

Prerequisites

1. Remove the [battery](#).
2. Remove the [base panel](#).
3. Follow the procedure from step 1 to step 3 in "Removing the [hard drive](#)".
4. Remove the [memory modules](#).
5. Remove the [wireless card](#).
6. Remove the [keyboard](#).
7. Follow the procedure from step 1 to step 8 in "Removing the [palm rest](#)".

Procedure

1. Disconnect the speaker cable from the system board.



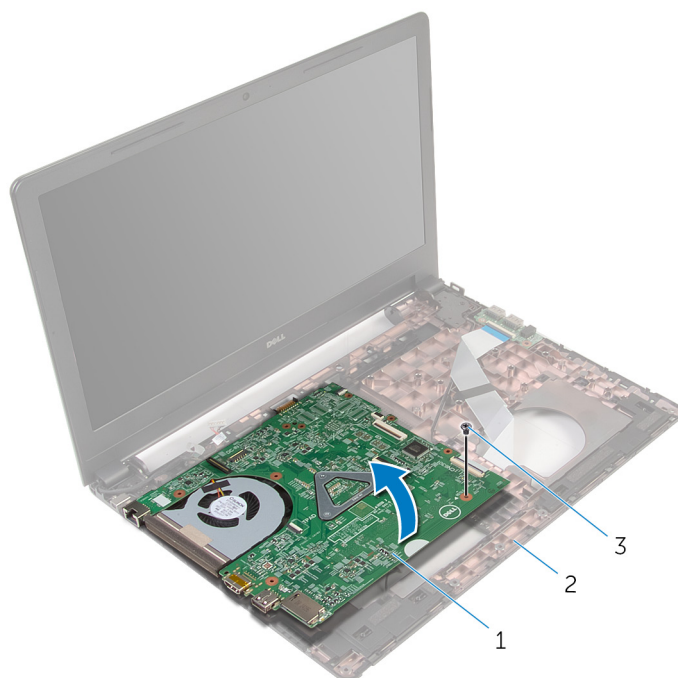
- 1. speaker cable
- 2. slot

2. Turn the computer over and open the display as far as possible.
3. Peel the tape that secures the display cable to the system board.
4. Lift the latch and disconnect the I/O-board cable from the system board.
5. Lift the latch and disconnect the display cable from the system board.
6. Disconnect the power-adaptor port cable from the system board.
7. Lift the latch and disconnect the I/O-board cable from the system board.



- 1. tape
- 2. display cable
- 3. latch
- 4. power-adaptor port cable
- 5. I/O-board cable
- 6. system board

8. Remove the screw that secures the system board to the computer base.
9. Lift the system board off the computer base.






1. system board
3. screw

2. computer base

10. Remove the [coin-cell battery](#).
11. Remove the [heat sink](#).


Ponovna namestitev matične plošče

-  **OPOMBA** Before working inside your computer, read the safety information that shipped with your computer and follow the steps in [Before working inside your computer](#). After working inside your computer, follow the instructions in [After working inside your computer](#). For more safety best practices, see the Regulatory Compliance home page at www.dell.com/regulatory_compliance.
-  **OPOMBA** Your computer's Service Tag is stored in the system board. You must enter the Service Tag in the BIOS setup program after you replace the system board.
-  **OPOMBA** Replacing the system board removes any changes you have made to the BIOS using the BIOS setup program. You must make the desired changes again after you replace the system board.

Teme:

- [Postopek](#)
- [Po postopku](#)

Postopek

1. Ponovno namestite [hladilnik](#).
2. Ponovno namestite [gumbno baterijo](#).
 -  **POZOR** Da ne bi prišlo do poškodb matične plošče, se prepričajte, da pod njo ni nobenih kablov.
3. Odprtino za vijak na matični plošči poravnajte z odprtino za vijak na ohišju računalnika in matično ploščo postavite na ohišje računalnika.
4. Ponovno namestite vijak, s katerim je matična plošča pritrjena na osnovo računalnika.
5. Kabel vrat za napajalnik priključite na matično ploščo.
6. Kabel zaslona potisnite v priključek na matični plošči, nato pa zapah pritisnite navzdol, da pritrdite kabel.
7. Prilepite trak, s katerim je kabel zaslona pritrjen na matično ploščo.
8. Kabel V/I-plošče potisnite v priključek na matični plošči ter pritisnite na zapah, da pritrdite kabel.
9. Zaprite zaslon in obrnite računalnik.
10. Kabel zvočnika priključite na matično ploščo.

Po postopku

1. Upoštevajte navodila od 2. do 6. koraka v poglavju »Ponovna namestitev [naslona za dlani](#)«.
2. Ponovno namestite [tipkovnico](#).
3. Ponovno namestite [brežžično kartico](#).
4. Ponovno namestite [pomnilniške module](#).
5. Upoštevajte navodila od 3. do 5. koraka v poglavju »Ponovna namestitev [trdega diska](#)«.
6. Ponovno namestite [baterijo](#).
7. Ponovno namestite [osnovno ploščo](#).

Odstranjevanje gumbne baterije

OPOMBA Before working inside your computer, read the safety information that shipped with your computer and follow the steps in [Before working inside your computer](#). After working inside your computer, follow the instructions in [After working inside your computer](#). For more safety best practices, see the Regulatory Compliance home page at www.dell.com/regulatory_compliance.

POZOR Removing the coin-cell battery resets the BIOS setup program's settings to default. It is recommended that you note the BIOS setup program's settings before removing the coin-cell battery.

Teme:

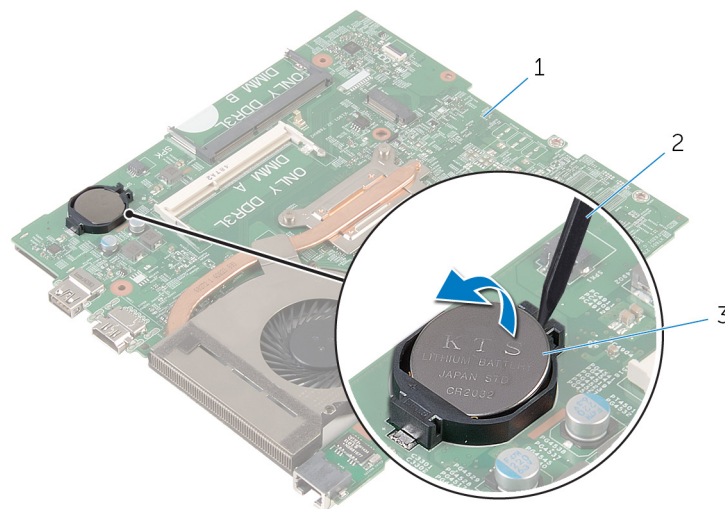
- [Prerequisites](#)
- [Procedure](#)

Prerequisites

1. Remove the [battery](#).
2. Remove the [base panel](#).
3. Follow the procedure from step 1 to step 3 in "Removing the [hard drive](#)".
4. Remove the [memory modules](#).
5. Remove the [wireless card](#).
6. Remove the [keyboard](#).
7. Follow the procedure from step 1 to step 8 in "Removing the [palm rest](#)".
8. Follow the procedure from step 1 to step 8 in "Removing the [system board](#)".

Procedure

Using a plastic scribe, gently pry the coin-cell battery out of the battery socket on the system board.



1. system board
3. coin-cell battery

2. plastic scribe

Ponovna namestitev gumbne baterije

OPOMBA Before working inside your computer, read the safety information that shipped with your computer and follow the steps in [Before working inside your computer](#). After working inside your computer, follow the instructions in [After working inside your computer](#). For more safety best practices, see the Regulatory Compliance home page at www.dell.com/regulatory_compliance.

Teme:

- [Postopek](#)
- [Post-requisites](#)

Postopek

S pozitivno stranjo navzgor potisnite gumbno baterijo v ležišče na matični plošči.

Post-requisites

1. Follow the procedure from step 3 to step 10 in “Replacing the [system board](#)”.
2. Follow the procedure from step 2 to step 6 in “Replacing the [palm rest](#)”.
3. Replace the [keyboard](#).
4. Replace the [wireless card](#).
5. Replace the [memory modules](#).
6. Follow the procedure from step 3 to step 5 in “Replacing the [hard drive](#)”.
7. Replace the [battery](#).
8. Replace the [base panel](#).

Odstranjevanje hladilnika

OPOMBA Before working inside your computer, read the safety information that shipped with your computer and follow the steps in [Before working inside your computer](#). After working inside your computer, follow the instructions in [After working inside your computer](#). For more safety best practices, see the Regulatory Compliance home page at www.dell.com/regulatory_compliance.

OPOMBA The heat sink may become hot during normal operation. Allow sufficient time for the heat sink to cool before you touch it.

POZOR For maximum cooling of the processor, do not touch the heat transfer areas on the heat sink. The oils in your skin can reduce the heat transfer capability of the thermal grease.

Teme:

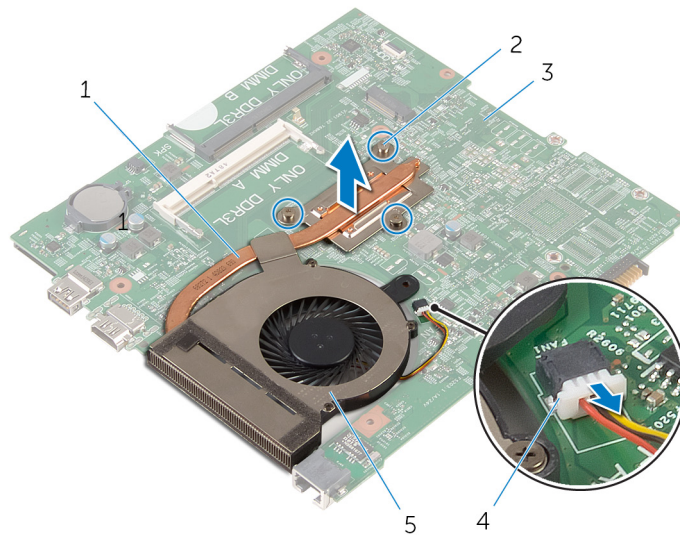
- [Prerequisites](#)
- [Procedure](#)

Prerequisites

1. Remove the [battery](#).
2. Remove the [base panel](#).
3. Follow the procedure from step 1 to step 3 in “Removing the [hard drive](#)”.
4. Remove the [memory modules](#).
5. Remove the [wireless card](#).
6. Remove the [keyboard](#).
7. Follow the procedure from step 1 to step 8 in “Removing the [palm rest](#)”.
8. Follow the procedure from step 1 to step 8 in “Removing the [system board](#)”.

Procedure

1. Turn the system board over.
2. In sequential order, as indicated on the heat sink, loosen the captive screws that secure the cooling assembly to the system board.
3. Disconnect the fan cable from the system board.



1. cooling assembly
 2. captive screws (3)
 3. system board
 4. fan cable
 5. fan
4. Lift the cooling assembly off the system board.
 5. Remove the fan.

Ponovna namestitev hladilnika

OPOMBA Before working inside your computer, read the safety information that shipped with your computer and follow the steps in [Before working inside your computer](#). After working inside your computer, follow the instructions in [After working inside your computer](#). For more safety best practices, see the Regulatory Compliance home page at www.dell.com/regulatory_compliance.

POZOR Incorrect alignment of the heat sink can damage the system board and processor.

OPOMBA The original thermal grease can be reused if the original system board and heat sink are reinstalled together. If either the system board or the heat sink is replaced, use the thermal pad provided in the kit to ensure that thermal conductivity is achieved.

Teme:

- [Postopek](#)
- [Po postopku](#)

Postopek

1. Ponovno namestite [ventilator](#).
2. Poravnajte vijake na sklopu za hlajenje z odprtini za vijake na matični plošči.
3. V zaporedju (označenem na hladilniku) privijte pritrdilne vijake, s katerimi je sklop za hlajenje pritrjen na matično ploščo.
4. Priključite kabel ventilatorja na matično ploščo.

Po postopku

1. Upoštevajte navodila od 3. do 10. koraka v poglavju »Ponovna namestitev [matične plošče](#)«.
2. Upoštevajte navodila od 2. do 6. koraka v poglavju »Ponovna namestitev [naslona za dlani](#)«.
3. Ponovno namestite [tipkovnico](#).
4. Ponovno namestite [brezžično kartico](#).
5. Ponovno namestite [pomnilniške module](#).
6. Upoštevajte navodila od 3. do 5. koraka v poglavju »Ponovna namestitev [trdega diska](#)«.
7. Ponovno namestite [baterijo](#).
8. Ponovno namestite [osnovno ploščo](#).

Odstranjevanje ventilatorja

OPOMBA Before working inside your computer, read the safety information that shipped with your computer and follow the steps in [Before working inside your computer](#). After working inside your computer, follow the instructions in [After working inside your computer](#). For more safety best practices, see the Regulatory Compliance home page at www.dell.com/regulatory_compliance.

Teme:

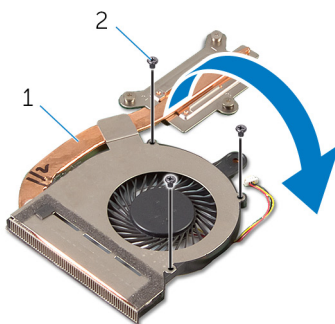
- [Prerequisites](#)
- [Procedure](#)

Prerequisites

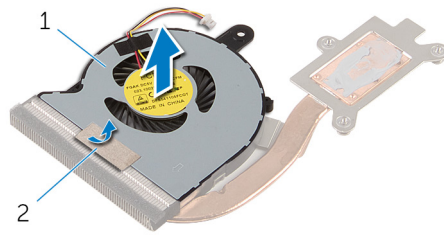
1. Remove the [battery](#).
2. Remove the [base panel](#).
3. Follow the procedure from step 1 to step 3 in "Removing the [hard drive](#)".
4. Remove the [memory modules](#).
5. Remove the [wireless card](#).
6. Remove the [keyboard](#).
7. Follow the procedure from step 1 to step 8 in "Removing the [palm rest](#)".
8. Follow the procedure from step 1 to step 8 in "Removing the [system board](#)".
9. Follow the procedure from step 1 to step 4 in "Removing the [heat sink](#)".

Procedure

1. Remove the screws that secure the fan to the heat sink.



1. cooling assembly
 2. screws (3)
2. Turn the cooling assembly over.
 3. Peel off the tape that secures the fan to the heat sink.
 4. Lift the fan off the heat sink.



1. fan

2. tape

Ponovna namestitev ventilatorja

OPOMBA Before working inside your computer, read the safety information that shipped with your computer and follow the steps in [Before working inside your computer](#). After working inside your computer, follow the instructions in [After working inside your computer](#). For more safety best practices, see the Regulatory Compliance home page at www.dell.com/regulatory_compliance.

Teme:

- [Postopek](#)
- [Post-requisites](#)

Postopek

1. Ventilator postavite na hladilnik.
2. Prilepite trak, s katerim je ventilator pritrjen na hladilnik.
3. Obrnite sklop za hlajenje.
4. Ponovno namestite vijake, s katerimi je ventilator pritrjen na hladilnik.

Post-requisites

1. Follow the procedure from step 2 to step 4 in "Replacing the [heat sink](#)".
2. Follow the procedure from step 3 to step 10 in "Replacing the [system board](#)".
3. Follow the procedure from step 2 to step 6 in "Replacing the [palm rest](#)".
4. Replace the [keyboard](#).
5. Replace the [wireless card](#).
6. Replace the [memory modules](#).
7. Follow the procedure from step 3 to step 5 in "Replacing the [hard drive](#)".
8. Replace the [battery](#).
9. Replace the [base panel](#).

Odstranjevanje sklopa zaslona

OPOMBA Before working inside your computer, read the safety information that shipped with your computer and follow the steps in [Before working inside your computer](#). After working inside your computer, follow the instructions in [After working inside your computer](#). For more safety best practices, see the Regulatory Compliance home page at www.dell.com/regulatory_compliance.

Teme:

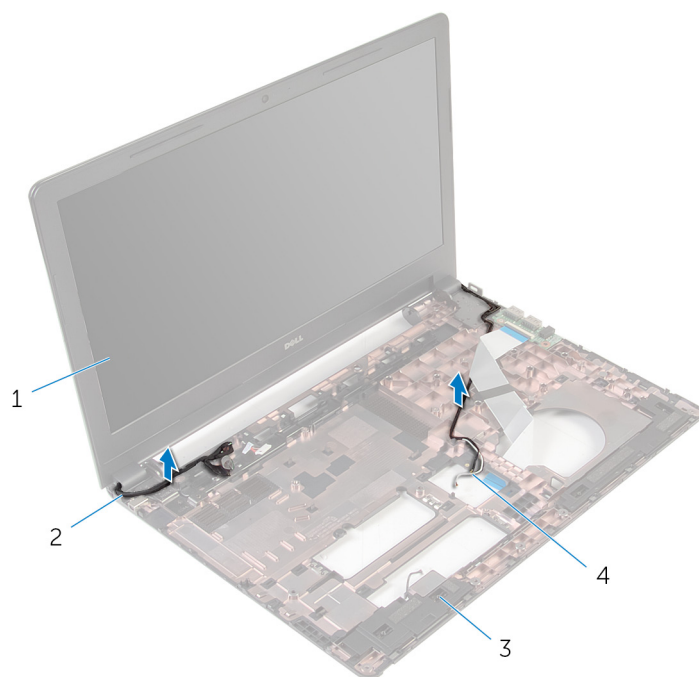
- [Prerequisites](#)
- [Postopek](#)

Prerequisites

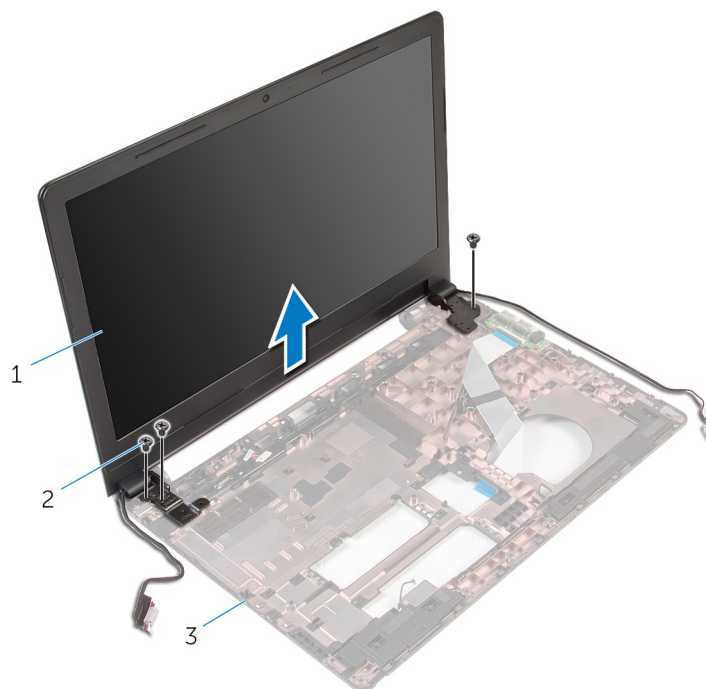
1. Remove the [battery](#).
2. Remove the [base panel](#).
3. Follow the procedure from step 1 to step 3 in "Removing the [hard drive](#)".
4. Remove the [memory modules](#).
5. Remove the [wireless card](#).
6. Remove the [keyboard](#).
7. Follow the procedure from step 1 to step 8 in "Removing the [palm rest](#)".
8. Follow the procedure from step 1 to step 8 in "Removing the [system board](#)".

Postopek

1. Obrnite računalnik in odprite zaslon, kolikor je mogoče.
2. Zapomnite si, kako so speljani kabli antene, in odstranite kable antene iz vodil na osnovi računalnika.
3. Zapomnite si, kako je speljan kabel zaslona, in odstranite kabel iz vodil na osnovni plošči računalnika.



- 1. Sklop zaslona
 - 2. Kabel zaslona
 - 3. Osnova računalnika
 - 4. Antenska kabla (2)
4. Odstranite vijake, s katerimi sta tečaja zaslona pritrjena na osnovo računalnika.



- 1. Sklop zaslona
 - 2. Vijaki (3)
 - 3. Osnova računalnika
5. Sklop zaslona previdno dvignite z ohišja računalnika.

Ponovna namestitev sklopa zaslona

OPOMBA Before working inside your computer, read the safety information that shipped with your computer and follow the steps in [Before working inside your computer](#). After working inside your computer, follow the instructions in [After working inside your computer](#). For more safety best practices, see the Regulatory Compliance home page at www.dell.com/regulatory_compliance.

Teme:

- [Postopek](#)
- [Po postopku](#)

Postopek

1. Odprtine za vijake na tečajih zaslona poravnajte z odprtinami za vijake na osnovi računalnika.
2. Ponovno namestite vijake, s katerimi so tečaji zaslona pritrjeni na osnovo računalnika.
3. Kabel zaslona napeljite skozi vodila na ohišju računalnika.
4. Kabla antene speljite skozi vodila in kabla antene potisnite skozi režo na ohišju računalnika.
5. Zaprite zaslon in obrnite računalnik.

Po postopku

1. Upoštevajte navodila od 3. do 10. koraka v poglavju »Ponovna namestitev [matične plošče](#)«.
2. Upoštevajte navodila od 2. do 6. koraka v poglavju »Ponovna namestitev [naslona za dlani](#)«.
3. Ponovno namestite [tipkovnico](#).
4. Ponovno namestite [brežžično kartico](#).
5. Ponovno namestite [pomnilniške module](#).
6. Upoštevajte navodila od 3. do 5. koraka v poglavju »Ponovna namestitev [trdega diska](#)«.
7. Ponovno namestite [osnovno ploščo](#).
8. Ponovno namestite [baterijo](#).

Odstranjevanje vrat za napajalnik

OPOMBA Before working inside your computer, read the safety information that shipped with your computer and follow the steps in [Before working inside your computer](#). After working inside your computer, follow the instructions in [After working inside your computer](#). For more safety best practices, see the Regulatory Compliance home page at www.dell.com/regulatory_compliance.

Teme:

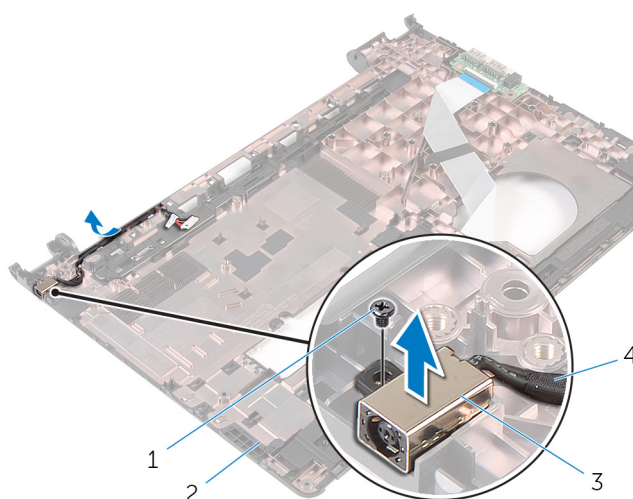
- [Prerequisites](#)
- [Postopek](#)

Prerequisites

1. Remove the [battery](#).
2. Remove the [base panel](#).
3. Follow the procedure from step 1 to step 3 in “Removing the [hard drive](#)”.
4. Remove the [memory modules](#).
5. Remove the [wireless card](#).
6. Remove the [keyboard](#).
7. Follow the procedure from step 1 to step 8 in “Removing the [palm rest](#)”.
8. Follow the procedure from step 1 to step 8 in “Removing the [system board](#)”.
9. Remove the [display assembly](#).

Postopek

1. Zapomnite si, kako je speljan kabel vrat za napajalnik, in odstranite kabel iz vodil na ohišju računalnika.
2. Odstranite vijak, s katerim je priključek napajalnika pritrjen na osnovo računalnika.
3. Dvignite priključek napajalnika skupaj s kablom vrat za adapter stran od ohišja računalnika.



- | | |
|------------------------|-----------------------------|
| 1. Vijak | 2. Osnova računalnika |
| 3. Vrata za napajalnik | 4. Kabel vrat za napajalnik |

Ponovna namestitev vrat za napajalnik

OPOMBA Before working inside your computer, read the safety information that shipped with your computer and follow the steps in [Before working inside your computer](#). After working inside your computer, follow the instructions in [After working inside your computer](#). For more safety best practices, see the Regulatory Compliance home page at www.dell.com/regulatory_compliance.

Teme:

- [Postopek](#)
- [Po postopku](#)

Postopek

1. Potisnite vrata za napajalnik v režo na osnovi računalnika.
2. Kabel vrat za napajalnik priključite na matično ploščo.
3. Kabel vrat za napajalnik napeljite skozi vodila na ohišju računalnika.

Po postopku

1. Ponovno namestite [sklop zaslona](#).
2. Upoštevajte navodila od 3. do 10. koraka v poglavju »Ponovna namestitev [matične plošče](#)«.
3. Upoštevajte navodila od 2. do 6. koraka v poglavju »Ponovna namestitev [naslona za dlani](#)«.
4. Ponovno namestite [tipkovnico](#).
5. Ponovno namestite [brezžično kartico](#).
6. Ponovno namestite [pomnilniške module](#).
7. Upoštevajte navodila od 3. do 5. koraka v poglavju »Ponovna namestitev [trdega diska](#)«.
8. Ponovno namestite [osnovno ploščo](#).
9. Ponovno namestite [baterijo](#).

Odstranjevanje okvirja zaslona

OPOMBA Before working inside your computer, read the safety information that shipped with your computer and follow the steps in [Before working inside your computer](#). After working inside your computer, follow the instructions in [After working inside your computer](#). For more safety best practices, see the Regulatory Compliance home page at www.dell.com/regulatory_compliance.

Teme:

- [Prerequisites](#)
- [Postopek](#)

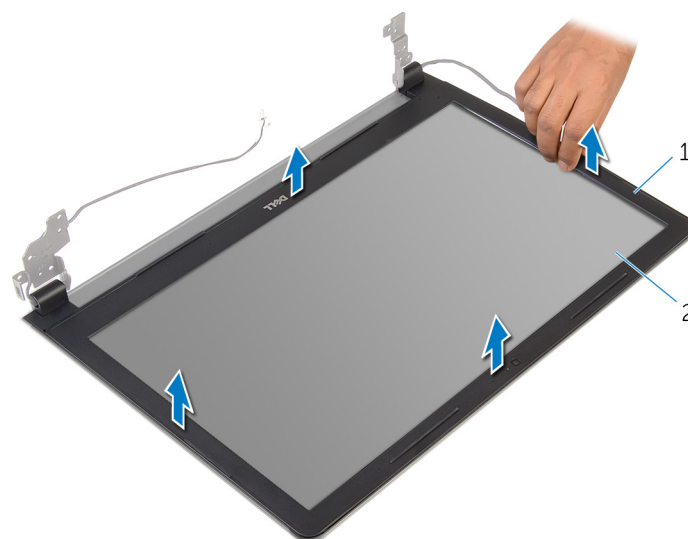
Prerequisites

NOTE: These instructions are applicable only for laptops with a non-touch screen display.

1. Remove the [battery](#).
2. Remove the [base panel](#).
3. Follow the procedure from step 1 to step 3 in "Removing the [hard drive](#)".
4. Remove the [memory modules](#).
5. Remove the [wireless card](#).
6. Remove the [keyboard](#).
7. Follow the procedure from step 1 to step 8 in "Removing the [palm rest](#)".
8. Follow the procedure from step 1 to step 8 in "Removing the [system board](#)".
9. Remove the [display assembly](#).

Postopek

1. S prsti previdno dvignite notranje robove okvirja zaslona.



1. Okvir zaslona
 2. Plošča zaslona
2. Dvignite okvir zaslona in ga odstranite s sklopa zaslona.

Ponovna namestitev okvirja zaslona

OPOMBA Before working inside your computer, read the safety information that shipped with your computer and follow the steps in [Before working inside your computer](#). After working inside your computer, follow the instructions in [After working inside your computer](#). For more safety best practices, see the Regulatory Compliance home page at www.dell.com/regulatory_compliance.

Teme:

- [Postopek](#)
- [Po postopku](#)

Postopek

Okvir zaslona poravnajte s hrbtnim pokrovom zaslona in ga previdno potisnite na njegovo mesto.

Po postopku

1. Ponovno namestite [sklop zaslona](#).
2. Upoštevajte navodila od 3. do 10. koraka v poglavju »Ponovna namestitev [matične plošče](#)«.
3. Upoštevajte navodila od 2. do 6. koraka v poglavju »Ponovna namestitev [naslona za dlani](#)«.
4. Ponovno namestite [tipkovnico](#).
5. Ponovno namestite [brezžično kartico](#).
6. Ponovno namestite [pomnilniške module](#).
7. Upoštevajte navodila od 3. do 5. koraka v poglavju »Ponovna namestitev [trdega diska](#)«.
8. Ponovno namestite [osnovno ploščo](#).
9. Ponovno namestite [baterijo](#).

Odstranjevanje plošče zaslona

OPOMBA Before working inside your computer, read the safety information that shipped with your computer and follow the steps in [Before working inside your computer](#). After working inside your computer, follow the instructions in [After working inside your computer](#). For more safety best practices, see the Regulatory Compliance home page at www.dell.com/regulatory_compliance.

Teme:

- [Prerequisites](#)
- [Postopek](#)

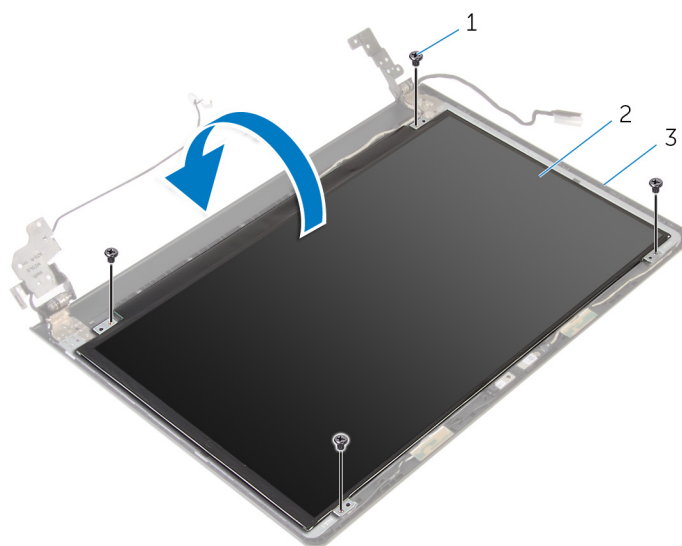
Prerequisites

NOTE: These instructions are applicable only for laptops with a non-touch screen display.

1. Remove the [battery](#).
2. Remove the [base panel](#).
3. Follow the procedure from step 1 to step 3 in "Removing the [hard drive](#)".
4. Remove the [memory modules](#).
5. Remove the [wireless card](#).
6. Remove the [keyboard](#).
7. Follow the procedure from step 1 to step 8 in "Removing the [palm rest](#)".
8. Follow the procedure from step 1 to step 8 in "Removing the [system board](#)".
9. Remove the [display assembly](#).
10. Remove the [display bezel](#).

Postopek

1. Odstranite vijake, s katerimi je plošča zaslona pritrjena na hrbtni pokrov zaslona.
2. Obrnite zaslonsko ploščo.

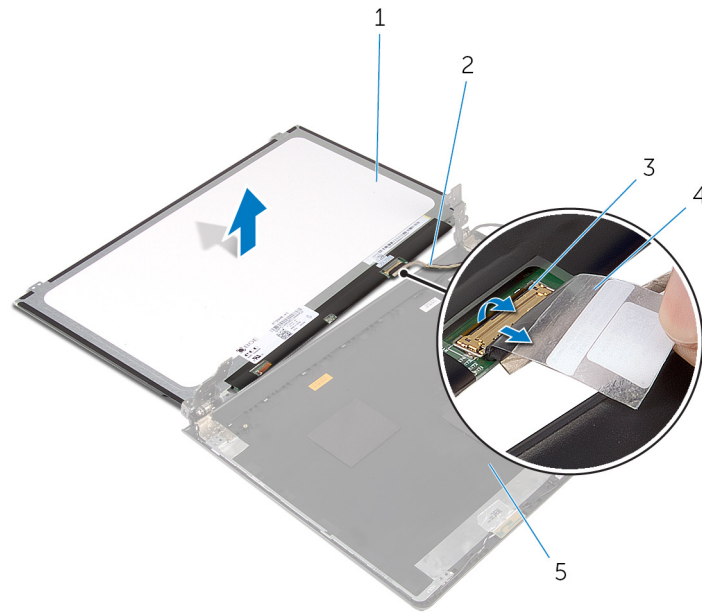


1. Vijaki (4)

2. Plošča zaslona

3. hrbtni pokrov zaslona

3. Prilepite trak, s katerim je kabel zaslona pritrjen na hrbtni pokrov zaslona.
4. Dvignite zapah in kabel zaslona odklopite s hrbtne plošče zaslona.
5. Ploščo zaslona dvignite s hrbtne plošče zaslona.



1. Plošča zaslona
3. Zapah

2. Kabel zaslona
4. Trak

Ponovna namestitev plošče zaslona

OPOMBA Before working inside your computer, read the safety information that shipped with your computer and follow the steps in [Before working inside your computer](#). After working inside your computer, follow the instructions in [After working inside your computer](#). For more safety best practices, see the Regulatory Compliance home page at www.dell.com/regulatory_compliance.

Teme:

- [Postopek](#)
- [Po postopku](#)

Postopek

1. Kabel zaslona potisnite v priključek na hrbtnem pokrovu zaslona in pritisnite na zapah, da pritrdite kabel.
2. Prilepite trak, s katerim je kabel zaslona pritrjen na hrbtno ploščo zaslona.
3. Obrnite ploščo zaslona in jo postavite na hrbtni pokrov zaslona.
4. Poravnajte odprtine za vijake na plošči zaslona z odprtinami za vijake na hrbtnem pokrovu zaslona.
5. Ponovno namestite vijake, s katerimi je plošča zaslona pritrjena na hrbtni pokrov zaslona.

Po postopku

1. Ponovno namestite [okvir zaslona](#).
2. Ponovno namestite [sklop zaslona](#).
3. Upoštevajte navodila od 3. do 10. koraka v poglavju »Ponovna namestitev [matične plošče](#)«.
4. Upoštevajte navodila od 2. do 6. koraka v poglavju »Ponovna namestitev [naslona za dlani](#)«.
5. Ponovno namestite [tipkovnico](#).
6. Ponovno namestite [brežžično kartico](#).
7. Ponovno namestite [pomnilniške module](#).
8. Upoštevajte navodila od 3. do 5. koraka v poglavju »Ponovna namestitev [trdega diska](#)«.
9. Ponovno namestite [osnovno ploščo](#).
10. Ponovno namestite [baterijo](#).

Odstranjevanje kamere

OPOMBA Before working inside your computer, read the safety information that shipped with your computer and follow the steps in [Before working inside your computer](#). After working inside your computer, follow the instructions in [After working inside your computer](#). For more safety best practices, see the Regulatory Compliance home page at www.dell.com/regulatory_compliance.

Teme:

- [Prerequisites](#)
- [Postopek](#)

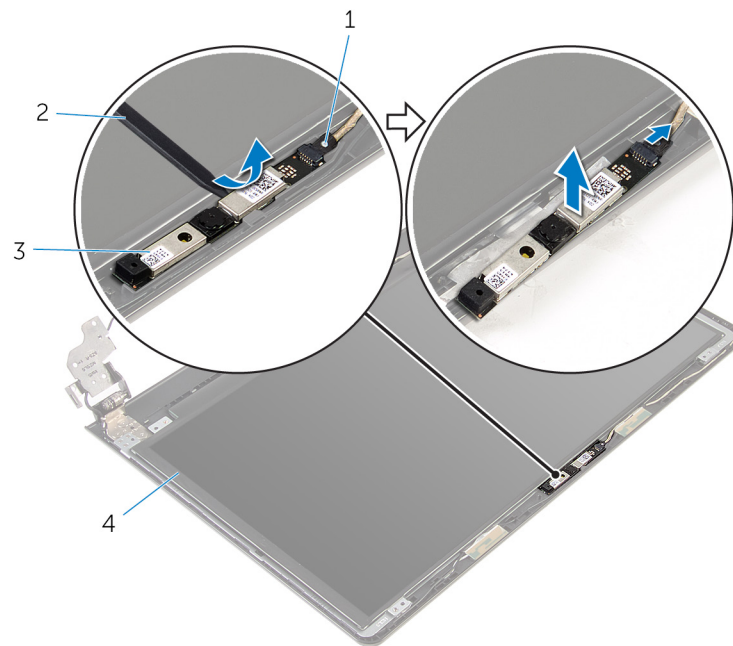
Prerequisites

NOTE: These instructions are applicable only for laptops with a non-touch screen display.

1. Remove the [battery](#).
2. Remove the [base panel](#).
3. Follow the procedure from step 1 to step 3 in "Removing the [hard drive](#)".
4. Remove the [memory modules](#).
5. Remove the [wireless card](#).
6. Remove the [keyboard](#).
7. Remove the [palm rest](#).
8. Remove the [system board](#).
9. Remove the [display assembly](#).
10. Remove the [display bezel](#).

Postopek

1. S plastičnim peresom previdno dvignite kamero s hrbtnega pokrova zaslona.
2. Kabel kamere odklopite s kamere.



1. Kabel kamere
3. Kamera

2. Plastično pero

Ponovna namestitev kamere

OPOMBA Before working inside your computer, read the safety information that shipped with your computer and follow the steps in **Before working inside your computer**. After working inside your computer, follow the instructions in **After working inside your computer**. For more safety best practices, see the Regulatory Compliance home page at www.dell.com/regulatory_compliance.

Teme:

- [Po postopku](#)
- [Postopek](#)

Po postopku

1. Ponovno namestite [okvir zaslona](#).
2. Ponovno namestite [sklop zaslona](#).
3. Ponovno namestite [matično ploščo](#).
4. Ponovno namestite [naslon za dlani](#).
5. Ponovno namestite [tipkovnico](#).
6. Ponovno namestite [brežžično kartico](#).
7. Ponovno namestite [pomnilniške module](#).
8. Upoštevajte navodila od 3. do 5. koraka v poglavju »Ponovna namestitev [trdega diska](#)«.
9. Ponovno namestite [osnovno ploščo](#).
10. Ponovno namestite [baterijo](#).

Postopek

1. Kabel kamere priklopite na kamero.
2. Poravnajte kamero z oznakami za poravnavo na hrbtnem pokrovu zaslona in pritrdite kamero na mesto.

Odstranjevanje tečajev zaslona

OPOMBA Before working inside your computer, read the safety information that shipped with your computer and follow the steps in [Before working inside your computer](#). After working inside your computer, follow the instructions in [After working inside your computer](#). For more safety best practices, see the Regulatory Compliance home page at www.dell.com/regulatory_compliance.

Teme:

- [Prerequisites](#)
- [Postopek](#)

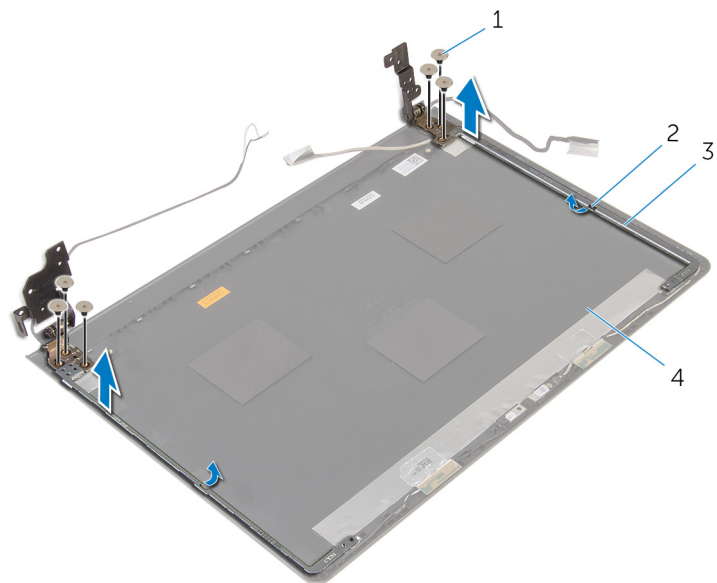
Prerequisites

NOTE: These instructions are applicable only for laptops with a non-touch screen display.

1. Remove the [battery](#).
2. Remove the [base panel](#).
3. Follow the procedure from step 1 to step 3 in "Removing the [hard drive](#)".
4. Remove the [memory modules](#).
5. Remove the [wireless card](#).
6. Remove the [keyboard](#).
7. Follow the procedure from step 1 to step 8 in "Removing the [palm rest](#)".
8. Follow the procedure from step 1 to step 8 in "Removing the [system board](#)".
9. Remove the [display assembly](#).
10. Remove the [display panel](#).
11. Remove the [display bezel](#).

Postopek

1. Odstranite vijake, s katerimi sta tečaja zaslona pritrjena na hrbtni pokrov zaslona.
2. Snemite tečaja z zapahov in dvignite tečaja zaslona s hrbtnega pokrova zaslona.



1. Vijaki (6)

3. Tečaja zaslona (2)

2. Zapaha (2)

4. Hrbtni pokrov zaslona

Ponovna namestitvev tečajev zaslona

OPOMBA Before working inside your computer, read the safety information that shipped with your computer and follow the steps in [Before working inside your computer](#). After working inside your computer, follow the instructions in [After working inside your computer](#). For more safety best practices, see the Regulatory Compliance home page at www.dell.com/regulatory_compliance.

Teme:

- [Postopek](#)
- [Po postopku](#)

Postopek


1. Tečaje pomaknite pod zapaha na hrbtnem pokrovu zaslona.
2. Poravnajte odprtine za vijake na tečajih zaslona z odprtinami za vijake na hrbtnem pokrovu zaslona.
3. Ponovno namestite vijake, s katerimi sta tečaja zaslona pritrjena na hrbtni pokrov zaslona.

Po postopku

1. Ponovno namestite [okvir zaslona](#).
2. Namestite [ploščo zaslona](#).
3. Ponovno namestite [sklop zaslona](#).
4. Upoštevajte navodila od 3. do 10. koraka v poglavju »Ponovna namestitev [matične plošče](#)«.
5. Upoštevajte navodila od 2. do 6. koraka v poglavju »Ponovna namestitev [naslona za dlani](#)«.
6. Ponovno namestite [tipkovnico](#).
7. Ponovno namestite [brežžično kartico](#).
8. Ponovno namestite [pomnilniške module](#).
9. Upoštevajte navodila od 3. do 5. koraka v poglavju »Ponovna namestitev [trdega diska](#)«.
10. Ponovno namestite [osnovno ploščo](#).
11. Ponovno namestite [baterijo](#).

Posodobitev BIOS-a

Ko je na voljo posodobitev ali po ponovni namestitvi matične plošče boste morda morali posodobiti BIOS. Za posodobitev BIOS-a:

1. Vključite računalnik.
2. Obiščite spletno mesto **www.dell.com/support**.
3. Kliknite **Product Support** (Podpora za izdelek), vnesite servisno oznako svojega prenosnika in kliknite **Submit** (Pošlji).
 **OPOMBA** Če nimate servisne oznake, uporabite funkcijo samodejnega zaznavanja ali pa ročno poiščite model svojega računalnika.
4. Kliknite **Drivers & Downloads** (Gonilniki in prenosi).
5. Izberite operacijski sistem, nameščen na vašem računalniku.
6. Pomaknite se dol po strani in razširite **BIOS**.
7. Kliknite **Download File** (Prenesi datoteko), da se prenese najnovejša različica BIOS-a za vaš računalnik.
8. Shranite datoteko in ko je prenos dokončan, poiščite mapo, kamor ste shranili posodobitveno datoteko BIOS.
9. Dvokliknite ikono datoteke za posodobitev BIOS-a in upoštevajte navodila na zaslonu.

Iskanje pomoči in stik z družbo Dell

Viri samopomoči

Informacije ter pomoč v zvezi z izdelki in storitvami Dell so na voljo na naslednjih virih samopomoči:

Informacije o izdelkih in storitvah Dell

Windows 8.1 in Windows 10

www.dell.com

aplikacijo Dell Help & Support (Podpora in pomoč Dell)



Windows 10

aplikacija Get started (Začnite)



Windows 8,1

aplikacija Help + Tips (Pomoč in namigi)



Dostop do pomoči v sistemih Windows 8, Windows 8.1 in Windows 10

Dostop do pomoči v sistemu Windows 7

Spletna pomoč za operacijski sistem

Informacije o odpravljanju težav, uporabniški priročniki, navodila za namestitve, specifikacije izdelka, spletni dnevnik s tehnično pomočjo, gonilniki, posodobitve programske opreme in tako naprej

Naučite se več o operacijskem sistemu, o tem, kako namestiti in uporabljati računalnik, o varnostnem kopiranju podatkov, diagnostiki in tako dalje.

V iskalno polje Windows vtipkajte **Help and Support** (Pomoč in podpora) in pritisnite **Enter**.

Kliknite **Start > Pomoč in podpora**.

www.dell.com/support/windows

www.dell.com/support/linux

www.dell.com/support.

Glejte *Me and My Dell* (Jaz in moj Dell) na spletni strani www.dell.com/support/manuals.

Vzpostavljanje stika z družbo Dell

Če želite vzpostaviti stik z družbo Dell za prodajo, tehnično podporo ali podporo uporabnikom, obiščite www.dell.com/contactdell.

OPOMBA Storitve so odvisne od države in izdelka in niso na voljo za vse države.

OPOMBA Če nimate na voljo povezave z internetom, lahko kontaktne informacije najdete na vašem računu o nakupu, embalaži, blagajniškemu izpisku ali v katalogu izdelkov Dell.