

Inspiron 15

3000 Series

Service Manual



Napomene, oprezi i upozorenja

 **NAPOMENA** NAPOMENA ukazuje na važne informacije koje vam pomažu da koristite svoje računalo na bolji način.

 **OPREZ** MJERA OPREZA označava moguće oštećenje hardvera ili gubitak podataka i otkriva kako izbjeći te probleme.

 **UPOZORENJE** UPOZORENJE označava moguće oštećenje imovine, osobne ozljede ili smrt.

Autorsko pravo © 2015 Dell Inc. Sva prava pridržana. Ovaj proizvod zaštićen je američkim i međunarodnim zakonom o autorskom pravu i intelektualnom vlasništvu. Dell™ i logotip Dell u zaštitni znakovi tvrtke Dell Inc. u Sjedinjenim Američkim Državama i/ili drugim sudskim nadležnostima. Svi ostali znakovi i nazivi koji su navedeni ovdje mogu predstavljati zaštićene znakove odgovarajućih tvrtki.

1 Prije radova na unutrašnjosti računala.....	7
Prije nego počnete	7
Sigurnosne upute.....	7
Preporučeni alati.....	8
2 After working inside your tablet.....	9
3 Uklanjanje baterije.....	10
Procedure.....	10
4 Ponovno postavljanje baterije.....	11
Postupak.....	11
5 Uklanjanje osnovne ploče.....	12
Predradnje.....	12
Postupak.....	12
6 Ponovno postavljanje osnovne ploče.....	13
Postupak.....	13
Koraci nakon postupka.....	13
7 Uklanjanje tvrdog pogona.....	14
Predradnje.....	14
Procedure.....	14
8 Ponovno postavljanje tvrdog pogona.....	16
Postupak.....	16
Koraci nakon postupka.....	16
9 Uklanjanje memorijskih modula.....	17
Predradnje.....	17
Procedure.....	17
10 Ponovno postavljanje memorijskih modula.....	18
Procedure.....	18
Koraci nakon postupka.....	18
11 Uklanjanje kartice za bežičnu vezu.....	19
Predradnje.....	19
Procedure.....	19
12 Ponovno postavljanje kartice za bežičnu vezu.....	20
Postupak.....	20

Koraci nakon postupka.....	20
13 Uklanjanje tipkovnice.....	21
Predradnje.....	21
Postupak.....	21
14 Ponovno postavljanje tipkovnice.....	23
Postupak.....	23
Koraci nakon postupka.....	23
15 Uklanjanje oslonca za ruku.....	24
Prerequisites.....	24
Procedure.....	24
16 Ponovno postavljanje oslonca za ruku.....	27
Postupak.....	27
Koraci nakon postupka.....	27
17 Uklonite podlogu osjetljivu na dodir.....	28
Prerequisites.....	28
Procedure.....	28
18 Ponovno postavljanje podloge osjetljive na dodir.....	30
Postupak.....	30
Koraci nakon postupka.....	30
19 Uklanjanje ploče gumba za uključivanje/isključivanje.....	31
Prerequisites.....	31
Procedure.....	31
20 Ponovno postavljanje ploče s gumbom za uključivanje/isključivanje.....	33
Postupak.....	33
Koraci nakon postupka.....	33
21 Uklanjanje zvučnika.....	34
Prerequisites.....	34
Procedure.....	34
22 Ponovno postavljanje zvučnika.....	36
Postupak.....	36
Koraci nakon postupka.....	36
23 Uklanjanje I/O ploče.....	37
Prerequisites.....	37
Procedure.....	37
24 Ponovno postavljanje I/O ploče.....	38
Postupak.....	38

Koraci nakon postupka.....	38
25 Uklanjanje matične ploče.....	39
Prerequisites.....	39
Procedure.....	39
26 Ponovno postavljanje matične ploče.....	42
Postupak.....	42
Koraci nakon postupka.....	42
27 Uklanjanje baterije na matičnoj ploči.....	43
Prerequisites.....	43
Procedure.....	43
28 Ponovno postavljanje baterije na matičnoj ploči.....	44
Postupak.....	44
Post-requisites.....	44
29 Uklanjanje sklopa hladila.....	45
Prerequisites.....	45
Procedure.....	45
30 Ponovno postavljanje sklopa hladila.....	47
Postupak.....	47
Koraci nakon postupka.....	47
31 Uklanjanje ventilatora.....	48
Prerequisites.....	48
Procedure.....	48
32 Ponovno postavljanje ventilatora.....	50
Postupak.....	50
Post-requisites.....	50
33 Uklanjanje sklopa zaslona.....	51
Prerequisites.....	51
Postupak.....	51
34 Ponovno postavljanje sklopa zaslona.....	53
Postupak.....	53
Koraci nakon postupka.....	53
35 Uklanjanje priključka adaptera za napajanje.....	54
Prerequisites.....	54
Postupak.....	54
36 Ponovno postavljanje priključka adaptera za napajanje.....	55
Postupak.....	55

Koraci nakon postupka.....	55
37 Uklanjanje okvira zaslona.....	56
Prerequisites.....	56
Postupak.....	56
38 Ponovno postavljanje okvira zaslona.....	57
Postupak.....	57
Koraci nakon postupka.....	57
39 Uklanjanje ploče zaslona.....	58
Prerequisites.....	58
Postupak.....	58
40 Ponovno postavljanje ploče zaslona.....	60
Postupak.....	60
Koraci nakon postupka.....	60
41 Uklanjanje kamere.....	61
Prerequisites.....	61
Postupak.....	61
42 Ponovno postavljanje kamere.....	63
Koraci nakon postupka.....	63
Postupak.....	63
43 Uklanjanje šarki zaslona.....	64
Prerequisites.....	64
Postupak.....	64
44 Ponovno postavljanje šarki zaslona.....	66
Postupak.....	66
Koraci nakon postupka.....	66
45 Ažuriranje BIOS-a Flash postupkom.....	67
46 Dobivanje pomoći i kontaktiranje tvrtke Dell.....	68

Prije radova na unutrašnjosti računala

NAPOMENA The images in this document may differ from your computer depending on the configuration you ordered.

Teme:

- Prije nego počnete
- Sigurnosne upute
- Preporučeni alati

Prije nego počnete

1. Spremite i zatvorite sve otvorene datoteke i zatvorite sve otvorene programe.
2. Isključite vaše računalo.
 - Windows 10: Kliknite ili dotaknite **Sliku** > **Napajanje** > **Isključi**.
 - Windows 8.1: na zaslonu **Start**, kliknite ili dotaknite ikonu napajanja > **Isključi**.
 - Windows 7: Kliknite ili dotaknite **Start** > **Isključi**.

NAPOMENA Ako koristite drugačiji operativni sustav, pogledajte dokumentaciju operativnog sustava za upute o isključivanju.

3. Odspojite računalo i sve priključene uređaje iz svih električnih izvora napajanja.
4. Odspojite sve kabele poput telefonskih kabela, mrežnih kabela itd., iz vašeg računala.
5. Odspojite sve priključene i periferne uređaje, poput tipkovnice, miša, monitora itd., iz vašeg računala.
6. Uklonite sve medijske kartice i optički pogon iz računala, ako postoji.

Sigurnosne upute

Kako biste zaštitili vaše računalo od mogućih oštećenja i zbog vaše osobne zaštite, pridržavajte se slijedećih sigurnosnih uputa.

NAPOMENA Before working inside your computer, read the safety information that shipped with your computer. For more safety best practices, see the Regulatory Compliance home page at www.dell.com/regulatory_compliance.

NAPOMENA Disconnect all power sources before opening the computer cover or panels. After you finish working inside the computer, replace all covers, panels, and screws before connecting to the power source.

OPREZ To avoid damaging the computer, ensure that the work surface is flat and clean.

OPREZ To avoid damaging the components and cards, handle them by their edges and avoid touching pins and contacts.

OPREZ You should only perform troubleshooting and repairs as authorized or directed by the Dell technical assistance team. Damage due to servicing that is not authorized by Dell is not covered by your warranty. See the safety instructions that shipped with the product or at www.dell.com/regulatory_compliance.

OPREZ Before touching anything inside your computer, ground yourself by touching an unpainted metal surface, such as the metal at the back of the computer. While you work, periodically touch an unpainted metal surface to dissipate static electricity, which could harm internal components.

OPREZ When you disconnect a cable, pull on its connector or on its pull tab, not on the cable itself. Some cables have connectors with locking tabs or thumb-screws that you must disengage before disconnecting the cable. When disconnecting cables, keep them evenly aligned to avoid bending any connector pins. When connecting cables, ensure that the ports and connectors are correctly oriented and aligned.

 **OPREZ** Press and eject any installed card from the media-card reader.

Preporučeni alati

Za izvršavanje postupaka iz ovog dokumenta možda će vam trebati sljedeći alati:

- križni odvijač
- plastično šilo

After working inside your tablet

 **CAUTION:** Leaving stray or loose screws inside your computer may severely damage your computer.

1. Replace all screws and ensure that no stray screws remain inside your tablet.
2. Connect any external devices, peripherals, and cables you removed before working on your tablet.
3. Replace any media cards, discs, and any other parts that you removed before working on your tablet.
4. Connect your tablet and all attached devices to their electrical outlets.
5. Turn on your tablet.

Uklanjanje baterije

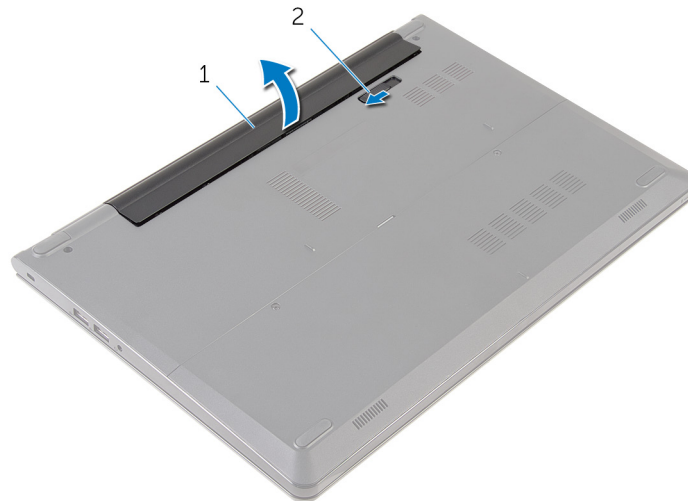
ⓘ NAPOMENA Before working inside your computer, read the safety information that shipped with your computer and follow the steps in [Before working inside your computer](#). After working inside your computer, follow the instructions in [After working inside your computer](#). For more safety best practices, see the Regulatory Compliance home page at www.dell.com/regulatory_compliance.

Teme:

- [Procedure](#)

Procedure

1. Close the display and turn the computer over.
2. Slide the battery-release latch to the unlock position.
3. Lift the battery at an angle and remove the battery from the battery bay.



1. battery

2. battery-release latch

4. Turn the computer over, open the display, and press the power button for five seconds to ground the system board.

Ponovno postavljanje baterije

ⓘ NAPOMENA Before working inside your computer, read the safety information that shipped with your computer and follow the steps in [Before working inside your computer](#). After working inside your computer, follow the instructions in [After working inside your computer](#). For more safety best practices, see the Regulatory Compliance home page at www.dell.com/regulatory_compliance.

Teme:

- [Postupak](#)

Postupak

Poravnajte jezičke na bateriji s utorima na pretincu za bateriju i umetnite bateriju na mjesto.

ⓘ NAPOMENA Jezičak za oslobađanje baterije vraća se u zaključani položaj ako je baterija pravilno instalirana.

Uklanjanje osnovne ploče

NAPOMENA Before working inside your computer, read the safety information that shipped with your computer and follow the steps in [Before working inside your computer](#). After working inside your computer, follow the instructions in [After working inside your computer](#). For more safety best practices, see the Regulatory Compliance home page at www.dell.com/regulatory_compliance.

Teme:

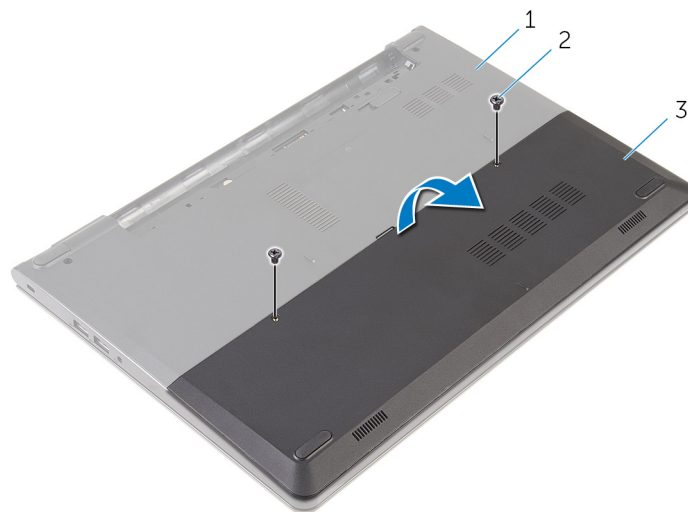
- [Predradnje](#)
- [Postupak](#)

Predradnje

Uklonite bateriju.

Postupak

1. Uklonite vijke koji pričvršćuju osnovnu ploču na kućište računala.
2. Prstima lagano izdignite osnovnu ploču s kućišta računala.



1. kućište računala
3. baznu ploču

2. vijci (2)

Ponovno postavljanje osnovne ploče

ⓘ NAPOMENA Before working inside your computer, read the safety information that shipped with your computer and follow the steps in [Before working inside your computer](#). After working inside your computer, follow the instructions in [After working inside your computer](#). For more safety best practices, see the Regulatory Compliance home page at www.dell.com/regulatory_compliance.

Teme:

- [Postupak](#)
- [Koraci nakon postupka](#)

Postupak

1. Pomaknite jezičke na osnovnoj ploči u utore na kućištu računala i umetnite osnovnu ploču na mjesto.
2. Ponovno postavite vijke koji pričvršćuju osnovnu ploču na kućište računala.

Koraci nakon postupka

Ponovno postavite [bateriju](#).

Uklanjanje tvrdog pogona

ⓘ NAPOMENA Before working inside your computer, read the safety information that shipped with your computer and follow the steps in [Before working inside your computer](#). After working inside your computer, follow the instructions in [After working inside your computer](#). For more safety best practices, see the Regulatory Compliance home page at www.dell.com/regulatory_compliance.

⚠ OPREZ Hard drives are fragile. Exercise care when handling the hard drive.

⚠ OPREZ To avoid data loss, do not remove the hard drive while the computer is in sleep or on state.

Teme:

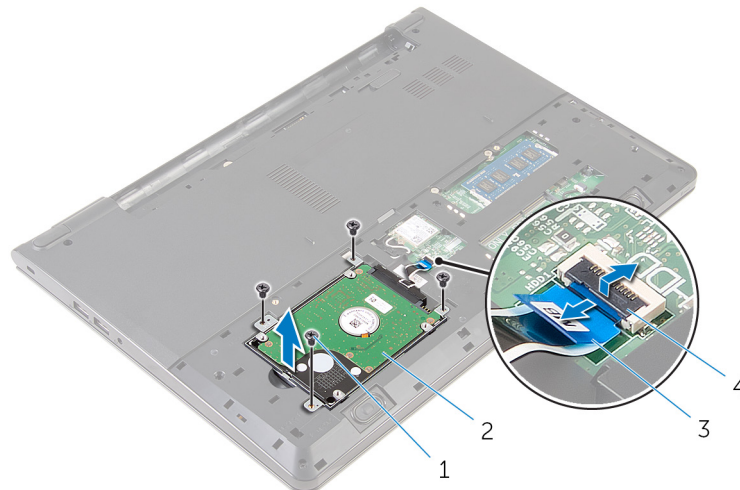
- [Predradnje](#)
- [Procedure](#)

Predradnje

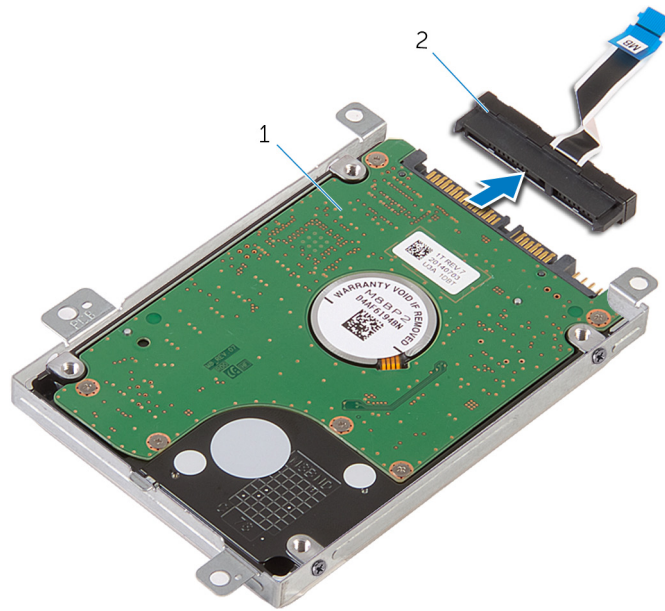
1. Uklonite [bateriju](#).
2. Uklonite [osnovnu ploču](#).

Procedure

1. Remove the screws that secure the hard-drive assembly to the computer base.
2. Lift the latch and disconnect the hard-drive cable from the system board.
3. Lift the hard-drive assembly off the computer base.



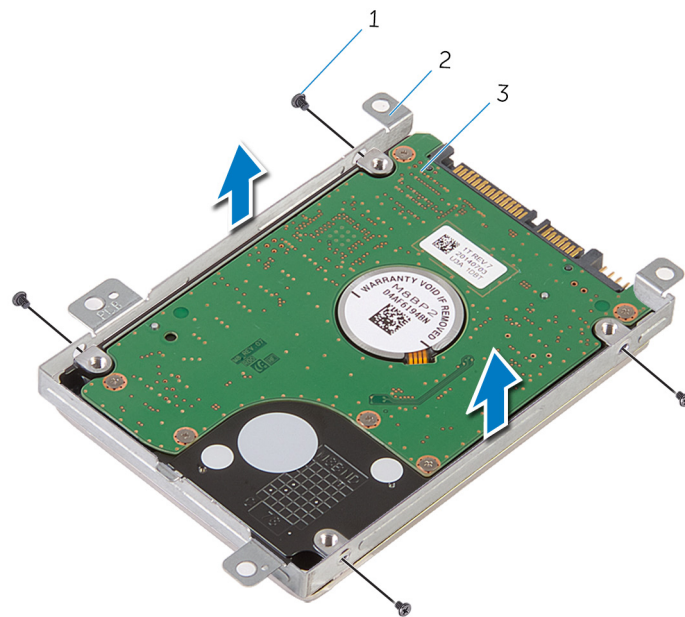
- | | |
|---------------------|------------------------|
| 1. screws (4) | 2. hard-drive assembly |
| 3. hard-drive cable | 4. latch |
4. Disconnect the interposer from the hard drive.



1. hard-drive assembly

2. interposer

5. Remove the screws that secure the hard-drive bracket to the hard drive and lift the hard-drive bracket off the hard drive.



1. screws (4)

2. hard-drive bracket

3. hard drive

Ponovno postavljanje tvrdog pogona

ⓘ NAPOMENA Before working inside your computer, read the safety information that shipped with your computer and follow the steps in [Before working inside your computer](#). After working inside your computer, follow the instructions in [After working inside your computer](#). For more safety best practices, see the Regulatory Compliance home page at www.dell.com/regulatory_compliance.

⚠ OPREZ Hard drives are fragile. Exercise care when handling the hard drive.

Teme:

- [Postupak](#)
- [Koraci nakon postupka](#)

Postupak

1. Postavite nosač tvrdog pogona iznad tvrdog pogona i poravnajte otvore za vijke na nosaču tvrdog pogona s otvorima za vijke na tvrdom pogonu.
2. Ponovno postavite vijke kojima je nosač tvrdog pogona pričvršćen za tvrdi pogon.
3. Umetnite sklop tvrdog pogona u kućište računala i poravnajte otvore za vijke na sklopu tvrdog pogona s otvorima za vijke na kućištu računala.
4. Priključite kabel tvrdog pogona na tvrdi pogon.
5. Ponovno postavite vijke koji pričvršćuju sklop tvrdog pogona na kućište računala.

Koraci nakon postupka

1. Ponovno postavite [osnovnu ploču](#).
2. Ponovno postavite [bateriju](#).

Uklanjanje memorijskih modula

NAPOMENA Before working inside your computer, read the safety information that shipped with your computer and follow the steps in [Before working inside your computer](#). After working inside your computer, follow the instructions in [After working inside your computer](#). For more safety best practices, see the Regulatory Compliance home page at www.dell.com/regulatory_compliance.

Teme:

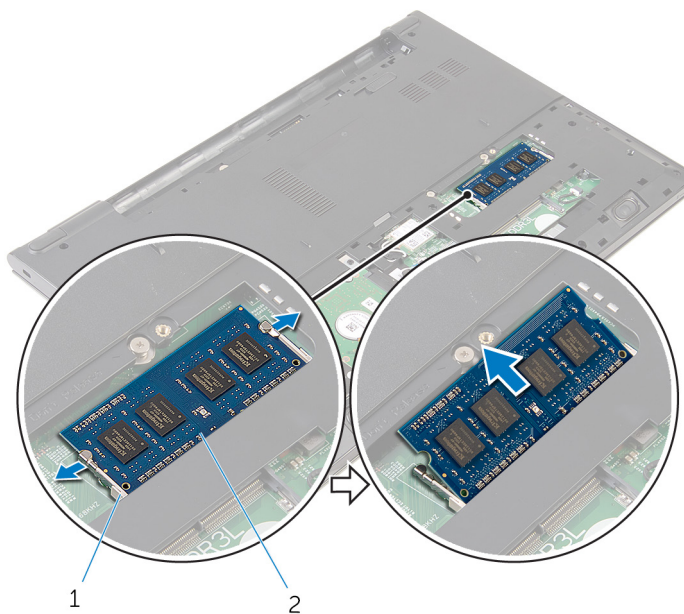
- [Predradnje](#)
- [Procedure](#)

Predradnje

1. Uklonite bateriju.
2. Uklonite osnovnu ploču.

Procedure

1. Using your fingertips, pry apart the securing clips on each end of the memory-module slot until the memory module pops up.
2. Slide and remove the memory module from the memory-module slot.



1. securing clips

2. memory module

Ponovno postavljanje memorijskih modula

ⓘ NAPOMENA Before working inside your computer, read the safety information that shipped with your computer and follow the steps in [Before working inside your computer](#). After working inside your computer, follow the instructions in [After working inside your computer](#). For more safety best practices, see the Regulatory Compliance home page at www.dell.com/regulatory_compliance.

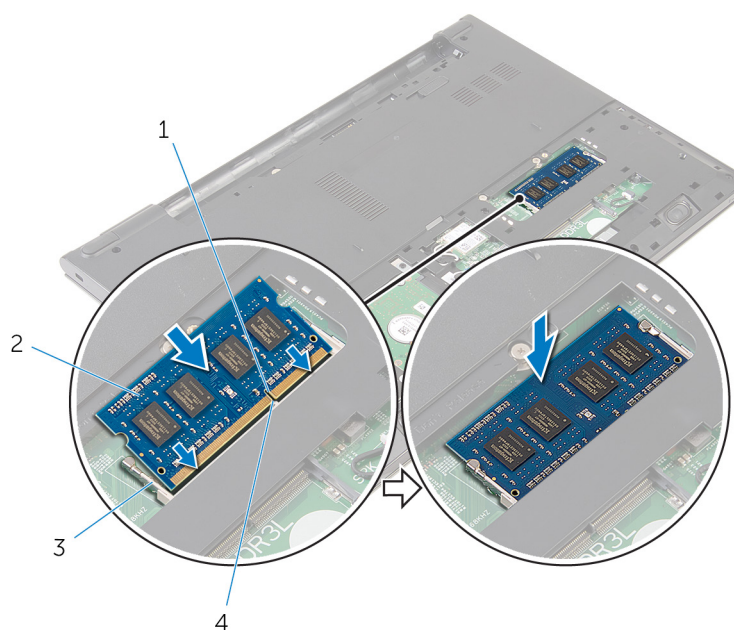
Teme:

- [Procedure](#)
- [Koraci nakon postupka](#)

Procedure

1. Align the notch on the memory module with the tab on the memory-module slot.
2. Slide the memory module firmly into the slot at an angle and press the memory module down until it clicks into place.

ⓘ NOTE: If you do not hear the click, remove the memory module and reinstall it.



1. notch
3. securing clips

2. memory module
4. tab

Koraci nakon postupka

1. Ponovno postavite [osnovnu ploču](#).
2. Ponovno postavite [bateriju](#).

Uklanjanje kartice za bežičnu vezu

ⓘ NAPOMENA Before working inside your computer, read the safety information that shipped with your computer and follow the steps in [Before working inside your computer](#). After working inside your computer, follow the instructions in [After working inside your computer](#). For more safety best practices, see the Regulatory Compliance home page at www.dell.com/regulatory_compliance.

Teme:

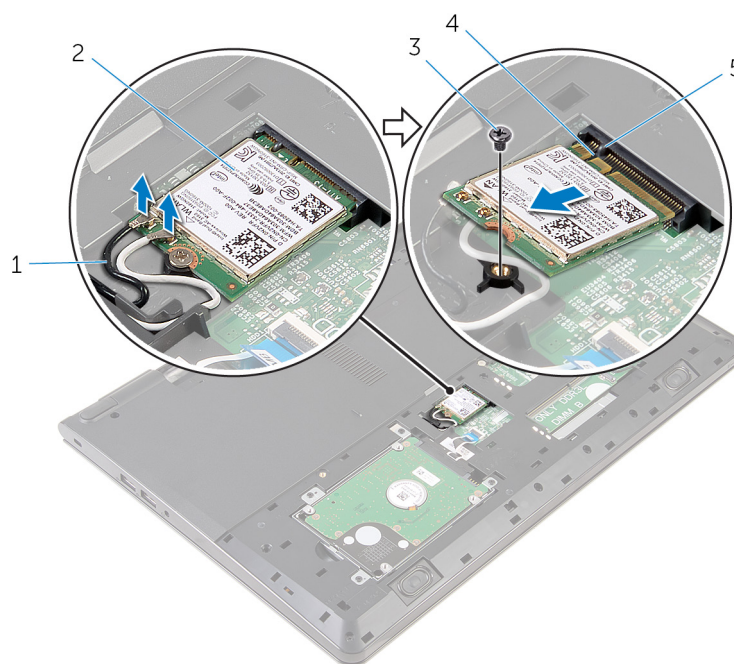
- [Predradnje](#)
- [Procedure](#)

Predradnje

1. Uklonite bateriju.
2. Uklonite osnovnu ploču.

Procedure

1. Disconnect the antenna cables from the wireless card.
2. Remove the screw that secures the wireless card to the system board.
3. Lift the wireless card, and then slide and remove it from the system board.



- | | |
|-----------------------|------------------|
| 1. antenna cables (2) | 2. wireless card |
| 3. screw | 4. notch |
| 5. tab | |

Ponovno postavljanje kartice za bežičnu vezu

ⓘ NAPOMENA Before working inside your computer, read the safety information that shipped with your computer and follow the steps in [Before working inside your computer](#). After working inside your computer, follow the instructions in [After working inside your computer](#). For more safety best practices, see the Regulatory Compliance home page at www.dell.com/regulatory_compliance.

Teme:

- [Postupak](#)
- [Koraci nakon postupka](#)

Postupak

⚠ OPREZ Radi izbjegavanja oštećenja kartice za bežičnu vezu, ne postavljajte nikakve kabele ispod nje.

1. Poravnajte ureze na kartici za bežičnu vezu s jezičkom na utoru za bežičnu karticu i umetnite karticu u utor.
2. Ponovno postavite vijak koji pričvršćuje karticu za bežičnu vezu na matičnu ploču.
3. Priključite antenske kabele na karticu za bežičnu vezu. Sljedeća tablica pruža shemu boja antenskih kabela za karticu za bežičnu vezu koju podržava vaše računalo:

Connectors on the wireless card	Antenna-cable color
Main (white triangle)	White
Auxiliary (black triangle)	Black

Koraci nakon postupka

1. Ponovno postavite [osnovnu ploču](#).
2. Ponovno postavite [bateriju](#).

Uklanjanje tipkovnice

NAPOMENA Before working inside your computer, read the safety information that shipped with your computer and follow the steps in **Before working inside your computer**. After working inside your computer, follow the instructions in **After working inside your computer**. For more safety best practices, see the Regulatory Compliance home page at www.dell.com/regulatory_compliance.

Teme:

- Predradnje
- Postupak

Predradnje

Uklonite bateriju.

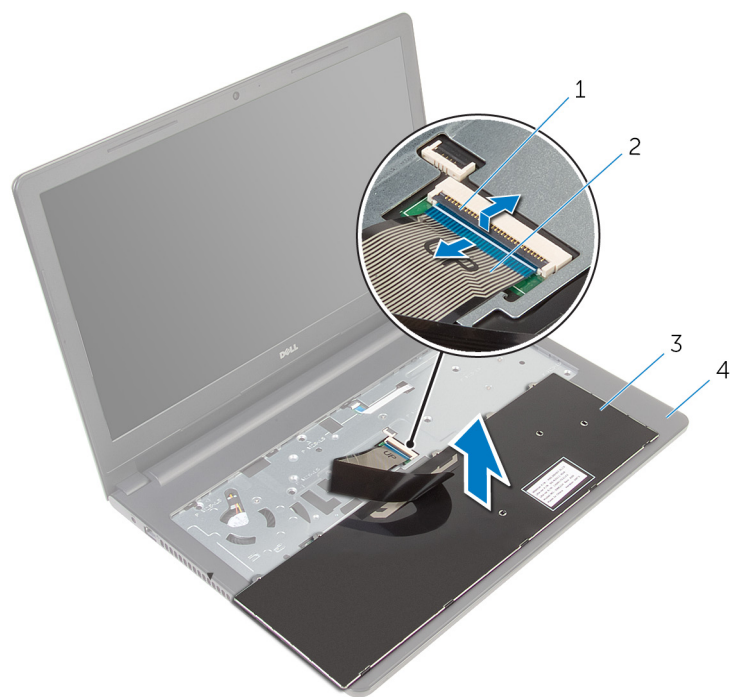
Postupak

1. Okrenite računalo i do kraja otvorite zaslon.
2. Pomoću plastičnog šila oslobodite jezičke koji pričvršćuju tipkovnicu na sklop oslonca za ruku.



1. jezičak
 2. plastično šilo
 3. tipkovnicu
 4. sklop oslonca za ruku
3. Pažljivo preokrenite tipkovnicu i stavite je na sklop oslonca za dlan.
 4. Podignite zasune i odspojite kabel tipkovnice i kabel pozadinskog osvjetljenja tipkovnice iz matične ploče.

NAPOMENA Kabel pozadinskog osvjetljenja tipkovnice postoji samo ako je prijenosno računalo isporučeno s tipkovnicom s pozadinskim osvjetljenjem.



1. zasun
 2. kabel tipkovnice
 3. tipkovnicu
 4. sklop oslonca za ruku
5. Podignite tipkovnicu zajedno s kabelima sa sklopa oslonca za ruku.

Ponovno postavljanje tipkovnice

ⓘ NAPOMENA Before working inside your computer, read the safety information that shipped with your computer and follow the steps in [Before working inside your computer](#). After working inside your computer, follow the instructions in [After working inside your computer](#). For more safety best practices, see the Regulatory Compliance home page at www.dell.com/regulatory_compliance.

Teme:

- [Postupak](#)
- [Koraci nakon postupka](#)

Postupak

1. Umetnite kabel tipkovnice u utor na matičnoj ploči i pritisnite prema dolje na zasun kako biste pričvrstili kabel.
2. Pažljivo okrenite tipkovnicu, umetnite jezičke na tipkovnici u utore na osloncu za ruku te umetnite tipkovnicu na mjesto.
3. Zatvorite zaslon i okrenite računalo.

Koraci nakon postupka

Ponovno postavite [bateriju](#).

Uklanjanje oslonca za ruku

ⓘ NAPOMENA Before working inside your computer, read the safety information that shipped with your computer and follow the steps in [Before working inside your computer](#). After working inside your computer, follow the instructions in [After working inside your computer](#). For more safety best practices, see the Regulatory Compliance home page at www.dell.com/regulatory_compliance.

Time:

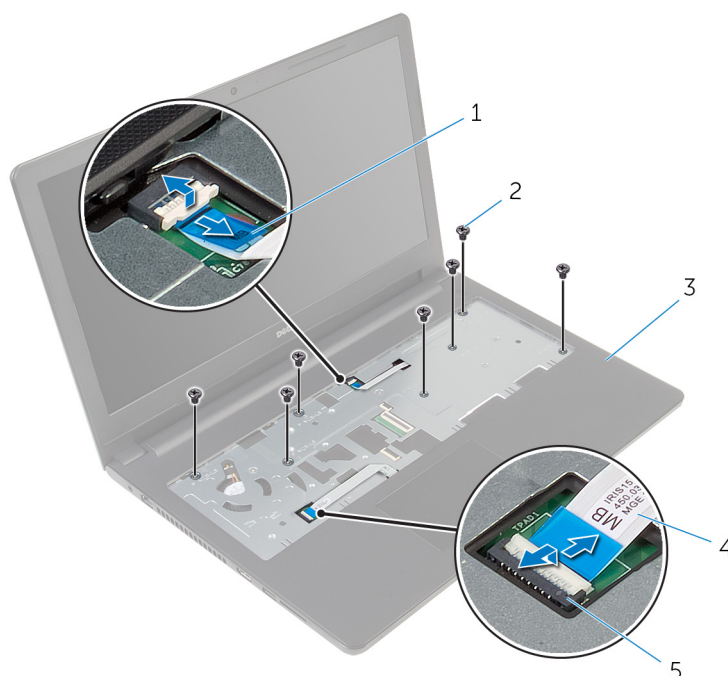
- [Prerequisites](#)
- [Procedure](#)

Prerequisites

1. Remove the [battery](#).
2. Remove the [base panel](#).
3. Follow the procedure from step 1 to step 3 in “Removing the [hard drive](#)”.
4. Remove the [keyboard](#).

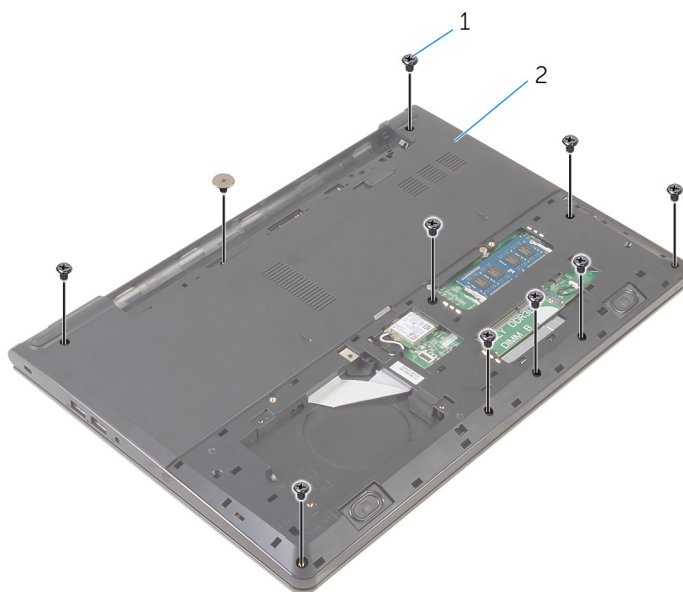
Procedure

1. Lift the latch and disconnect the touch-pad cable from the system board.
2. Lift the latch and disconnect the power-button cable from the system board.
3. Remove the screws that secure the palm-rest assembly to the computer base.



- | | |
|-----------------------|--------------------|
| 1. power-button cable | 2. screws (7) |
| 3. palm-rest assembly | 4. touch-pad cable |
| 5. latch | |

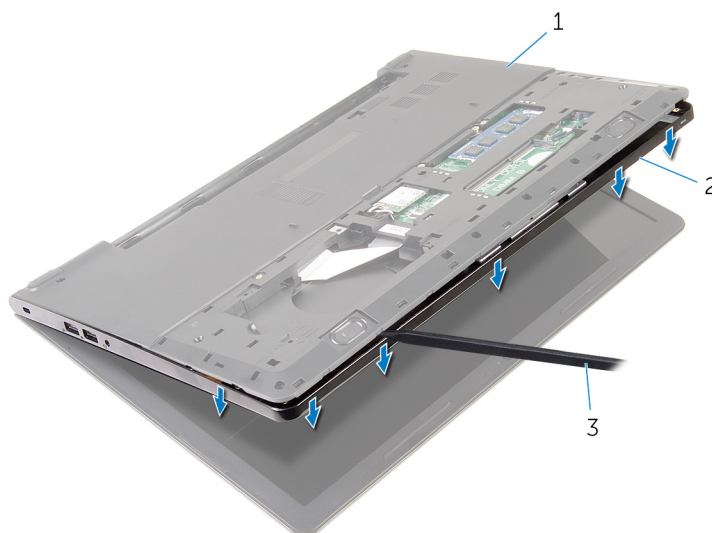
4. Close the display and turn the computer over.
5. Remove the screws that secure the palm-rest assembly to the computer base.



1. screws (10)

2. computer base

6. Slightly open the computer base and, using a plastic scribe, pry the palm-rest assembly off the computer base.



1. computer base

2. palm-rest assembly

3. plastic scribe

7. Turn the computer over and open the display.
8. Lift the palm-rest assembly off the computer base.



1. palm-rest assembly

2. computer base

9. Follow the procedure from step 1 to step 5 in “Removing the [touch pad](#)”.

Ponovno postavljanje oslonca za ruku

ⓘ NAPOMENA Before working inside your computer, read the safety information that shipped with your computer and follow the steps in [Before working inside your computer](#). After working inside your computer, follow the instructions in [After working inside your computer](#). For more safety best practices, see the Regulatory Compliance home page at www.dell.com/regulatory_compliance.

Teme:

- [Postupak](#)
- [Koraci nakon postupka](#)

Postupak

1. Slijedite postupak od koraka 1 do koraka 5 u „Ponovno postavljanje [podloge osjetljive na dodir](#)“.
2. Poravnajte otvore za vijke na osloncu za ruku s otvorima za vijke na kućištu računala i oslonac za ruku postavite na mjesto.
3. Ponovno postavite vijke koji pričvršćuju oslonac za ruku na kućište računala.
4. Umetnite kabel podloge osjetljive na dodir i kabel gumba za uključivanje/isključivanje u odgovarajuće priključke i pritisnite prema dolje zasune kako biste osigurali kabele.
5. Okrenite računalo.
6. Ponovno postavite vijke koji pričvršćuju oslonac za ruku na stražnji poklopac.

Koraci nakon postupka

1. Ponovno postavite [tipkovnicu](#).
2. Slijedite postupak od koraka 3 do koraka 5 u „[Ponovno postavljanje tvrdog pogona](#)“.
3. Ponovno postavite [osnovnu ploču](#).
4. Ponovno postavite [bateriju](#).

Uklonite podlogu osjetljivu na dodir

ⓘ NAPOMENA Before working inside your computer, read the safety information that shipped with your computer and follow the steps in [Before working inside your computer](#). After working inside your computer, follow the instructions in [After working inside your computer](#). For more safety best practices, see the Regulatory Compliance home page at www.dell.com/regulatory_compliance.

Teme:

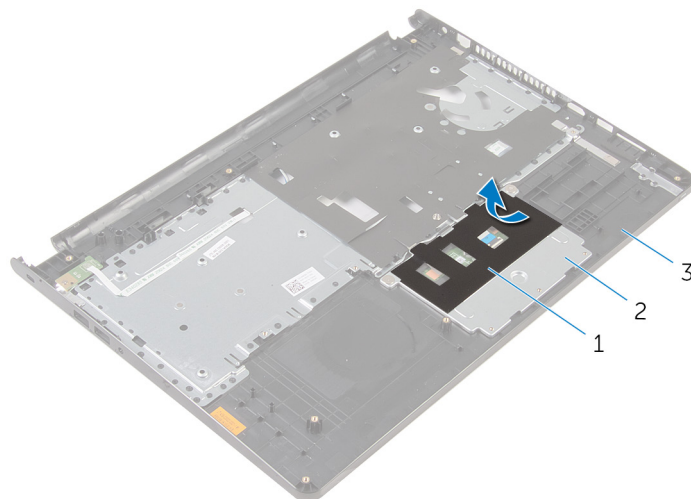
- [Prerequisites](#)
- [Procedure](#)

Prerequisites

1. Remove the [battery](#).
2. Remove the [base panel](#).
3. Follow the procedure from step 1 to step 3 in “Removing the [hard drive](#)”.
4. Remove the [keyboard](#).
5. Remove the [palm rest](#).

Procedure

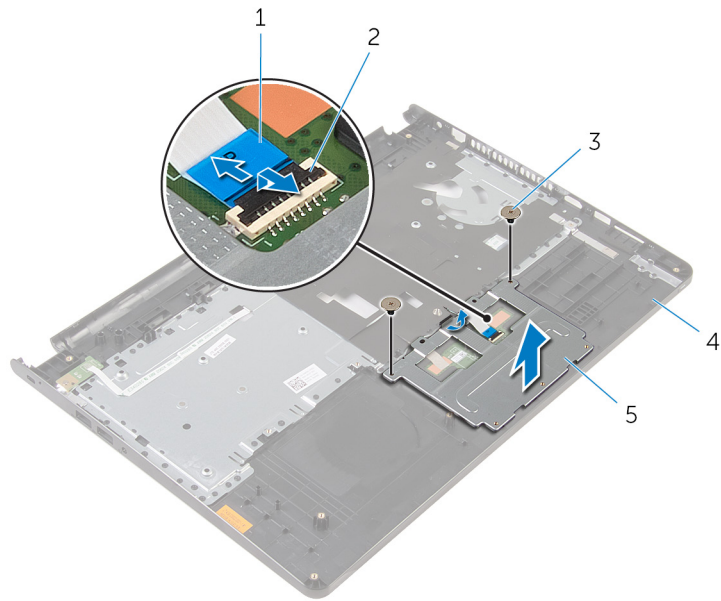
1. Peel the tape off the touch-pad bracket.



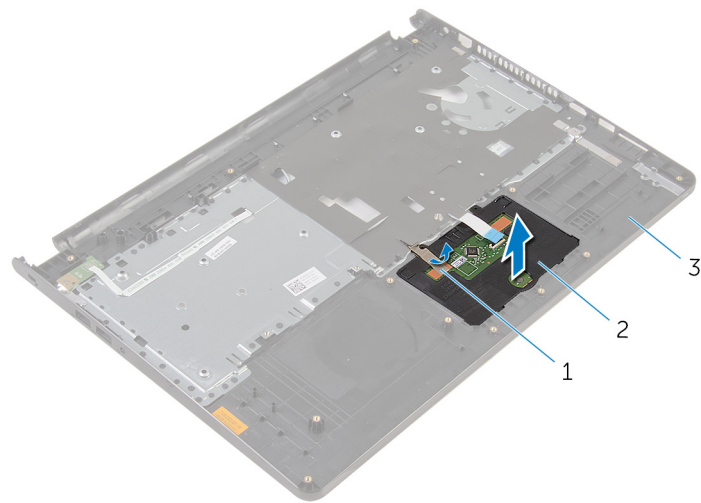
1. tape
3. palm rest

2. touch-pad bracket

2. Remove the screws that secure the touch-pad bracket to the touch pad.
3. Lift the latch and disconnect the touch-pad cable from touch pad.



- 1. touch-pad cable
 - 2. latch
 - 3. screws (2)
 - 4. palm rest
 - 5. touch-pad bracket
4. Peel off the tape over the touch pad.
 5. Lift the touch pad off the palm rest.



- 1. tape
- 2. touch pad
- 3. palm rest

Ponovno postavljanje podloge osjetljive na dodir

NAPOMENA Before working inside your computer, read the safety information that shipped with your computer and follow the steps in [Before working inside your computer](#). After working inside your computer, follow the instructions in [After working inside your computer](#). For more safety best practices, see the Regulatory Compliance home page at www.dell.com/regulatory_compliance.

Teme:

- [Postupak](#)
- [Koraci nakon postupka](#)

Postupak

1. Jezičke na podlozi osjetljivoj na dodir pogurajte u utore na osloncu za ruku.
2. Zalijepite traku koja pričvršćuje podlogu osjetljivu na dodir na oslonac za ruku.
3. Poravnajte otvore za vijke na nosaču podloge osjetljive na dodir s otvorima za vijke na osloncu za ruku.
4. Ponovno postavite vijke kojima je nosač podloge osjetljive na dodir pričvršćen za oslonac za ruku.
5. Nalijepite traku preko nosača podloge osjetljive na dodir.

Koraci nakon postupka

1. Ponovno postavite [oslonac za ruku](#).
2. Ponovno postavite [tipkovnicu](#).
3. Slijedite postupak od koraka 4 do koraka 6 u „Ponovno postavljanje [tvrdog pogona](#)“.
4. Ponovno postavite [osnovnu ploču](#).
5. Ponovno postavite [bateriju](#).

Uklanjanje ploče gumba za uključivanje/ isključivanje

NAPOMENA Before working inside your computer, read the safety information that shipped with your computer and follow the steps in [Before working inside your computer](#). After working inside your computer, follow the instructions in [After working inside your computer](#). For more safety best practices, see the Regulatory Compliance home page at www.dell.com/regulatory_compliance.

Teme:

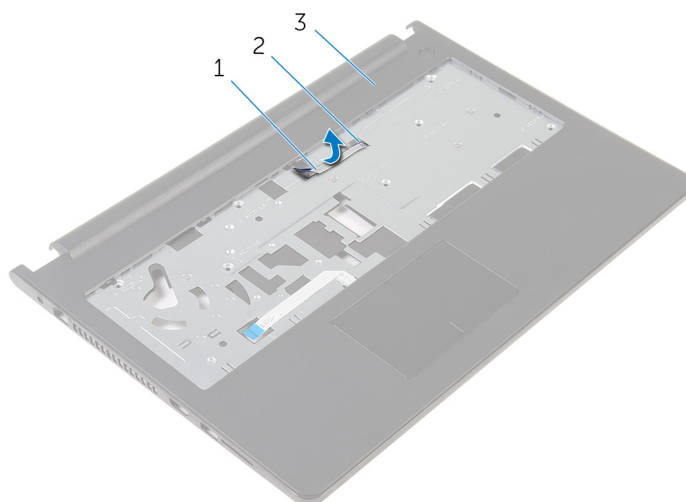
- [Prerequisites](#)
- [Procedure](#)

Prerequisites

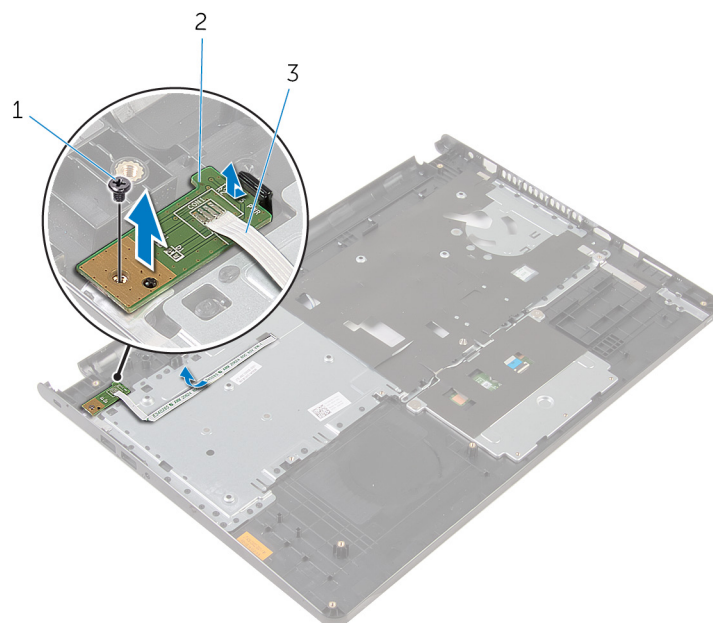
1. Remove the [battery](#).
2. Remove the [base panel](#).
3. Follow the procedure from step 1 to step 3 in “Removing the [hard drive](#)”.
4. Remove the [keyboard](#).
5. Follow the procedure from step 1 to step 8 in “Removing the [palm rest](#)”.

Procedure

1. Slide the power-button board cable through the slot on the palm rest.



- | | |
|-----------------------------|---------|
| 1. power-button board cable | 2. slot |
| 3. palm rest | |
2. Turn the palm rest over.
 3. Remove the screw that secures the power-button board to the palm rest.
 4. Slide the power-button board out from the tab on the palm rest.
 5. Lift the power-button board, along with its cable, off the palm rest.



1. screw

3. power-button board cable

2. power-button board

Ponovno postavljanje ploče s gumbom za uključivanje/isključivanje

ⓘ NAPOMENA Before working inside your computer, read the safety information that shipped with your computer and follow the steps in [Before working inside your computer](#). After working inside your computer, follow the instructions in [After working inside your computer](#). For more safety best practices, see the Regulatory Compliance home page at www.dell.com/regulatory_compliance.

Teme:

- [Postupak](#)
- [Koraci nakon postupka](#)

Postupak

1. Gurnite ploču gumba napajanja ispod jezičaca na sklopu oslonca za ruku i poravnajte rupu za vijak na ploči gumba napajanja s rupom za vijaka na sklopu oslonca za ruku.
2. Ponovno postavite vijak koji pričvršćuje ploču s gumbom napajanja za oslonac za ruku.
3. Umetnite kabel ploče gumba napajanja kroz utor na sklopu oslonca za ruku.

Koraci nakon postupka

1. Slijedite postupak od koraka 2 do koraka 6 u „[Ponovno postavljanje oslonca za ruku](#)“.
2. Ponovno postavite [tipkovnicu](#).
3. Slijedite postupak od koraka 4 do koraka 6 u „[Ponovno postavljanje tvrdog pogona](#)“.
4. Ponovno postavite [osnovnu ploču](#).
5. Ponovno postavite [bateriju](#).

Uklanjanje zvučnika

ⓘ NAPOMENA Before working inside your computer, read the safety information that shipped with your computer and follow the steps in [Before working inside your computer](#). After working inside your computer, follow the instructions in [After working inside your computer](#). For more safety best practices, see the Regulatory Compliance home page at www.dell.com/regulatory_compliance.

Teme:

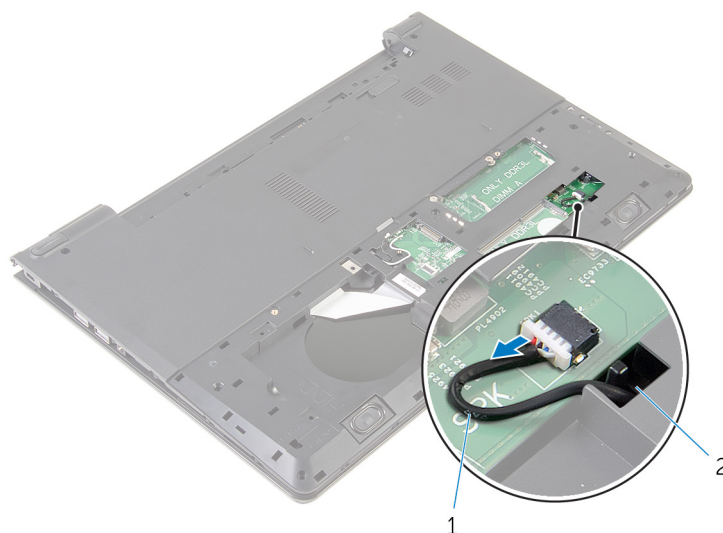
- [Prerequisites](#)
- [Procedure](#)

Prerequisites

1. Remove the [battery](#).
2. Remove the [base panel](#).
3. Follow the procedure from step 1 to step 3 in “Removing the [hard drive](#)”.
4. Remove the [keyboard](#).
5. Follow the procedure from step 1 to step 8 in “Removing the [palm rest](#)”.

Procedure

1. Disconnect the speaker cable from the system board.



1. speaker cable
 2. slot
2. Turn the computer over and open the display.
 3. Note the speaker-cable routing and remove the cable from the routing guides on the computer base.
 4. Slide the speaker cable through the slot on the computer base and lift the speakers, along with the speaker cable, off the computer base .



1. speaker cable

2. speakers (2)

Ponovno postavljanje zvučnika

ⓘ NAPOMENA Before working inside your computer, read the safety information that shipped with your computer and follow the steps in [Before working inside your computer](#). After working inside your computer, follow the instructions in [After working inside your computer](#). For more safety best practices, see the Regulatory Compliance home page at www.dell.com/regulatory_compliance.

Teme:

- [Postupak](#)
- [Koraci nakon postupka](#)

Postupak

1. Korištenjem vodilica poravnanja, poravnajte i postavite zvučnike na oslonac za ruku.
2. Provucite kabel zvučnika kroz vodilice na osloncu za ruku.
3. Okrenite računalo.
4. Umetnite kabel zvučnika kroz utor na kućištu računala i spojite kabel zvučnika na matičnu ploču.

Koraci nakon postupka

1. Slijedite postupak od koraka 2 do koraka 6 u „[Ponovno postavljanje oslonca za ruku](#)“.
2. Ponovno postavite [tipkovnicu](#).
3. Slijedite postupak od koraka 3 do koraka 5 u „[Ponovno postavljanje tvrdog pogona](#)“.
4. Ponovno postavite [osnovnu ploču](#).
5. Ponovno postavite [bateriju](#).

Uklanjanje I/O ploče

ⓘ NAPOMENA Before working inside your computer, read the safety information that shipped with your computer and follow the steps in [Before working inside your computer](#). After working inside your computer, follow the instructions in [After working inside your computer](#). For more safety best practices, see the Regulatory Compliance home page at www.dell.com/regulatory_compliance.

Teme:

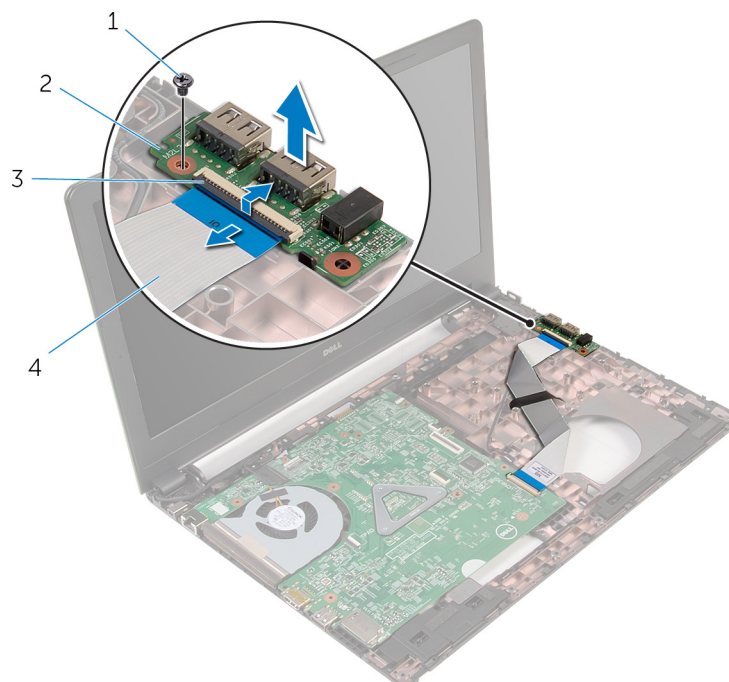
- [Prerequisites](#)
- [Procedure](#)

Prerequisites

1. Remove the [battery](#).
2. Remove the [base panel](#).
3. Follow the procedure from step 1 to step 3 in “Removing the [hard drive](#)”.
4. Remove the [keyboard](#).
5. Follow the procedure from step 1 to step 8 in “Removing the [palm rest](#)”.

Procedure

1. Lift the latch and disconnect the I/O-board cable from the I/O board.
2. Remove the screw that secures the I/O board to the computer base.
3. Lift the I/O board off the computer base.



- | | |
|----------|--------------------|
| 1. screw | 2. I/O board |
| 3. latch | 4. I/O-board cable |

Ponovno postavljanje I/O ploče

ⓘ NAPOMENA Before working inside your computer, read the safety information that shipped with your computer and follow the steps in [Before working inside your computer](#). After working inside your computer, follow the instructions in [After working inside your computer](#). For more safety best practices, see the Regulatory Compliance home page at www.dell.com/regulatory_compliance.

Teme:

- [Postupak](#)
- [Koraci nakon postupka](#)

Postupak

1. Poravnajte otvor za vijak na I/O ploči s otvorom za vijak na kućištu računala.
2. Ponovno postavite vijak koji pričvršćuje I/O ploču na kućište računala.
3. Pomaknite kabel I/O ploče u priključak na I/O ploči i pritisnite prema dolje zasun kako biste pričvrstili kabel.

Koraci nakon postupka

1. Slijedite postupak od koraka 2 do koraka 6 u „[Ponovno postavljanje oslonca za ruku](#)“.
2. Ponovno postavite [tipkovnicu](#).
3. Slijedite postupak od koraka 3 do koraka 5 u „[Ponovno postavljanje tvrdog pogona](#)“.
4. Ponovno postavite [osnovnu ploču](#).
5. Ponovno postavite [bateriju](#).

Uklanjanje matične ploče

- i** **NAPOMENA** Before working inside your computer, read the safety information that shipped with your computer and follow the steps in [Before working inside your computer](#). After working inside your computer, follow the instructions in [After working inside your computer](#). For more safety best practices, see the Regulatory Compliance home page at www.dell.com/regulatory_compliance.
- i** **NAPOMENA** Your computer's Service Tag is stored in the system board. You must enter the Service Tag in the BIOS setup program after you replace the system board.
- i** **NAPOMENA** Replacing the system board removes any changes you have made to the BIOS using the BIOS setup program. You must make the desired changes again after you replace the system board.
- i** **NAPOMENA** Before disconnecting the cables from the system board, note the location of the connectors so that you can reconnect the cables correctly after you replace the system board.

Teme:

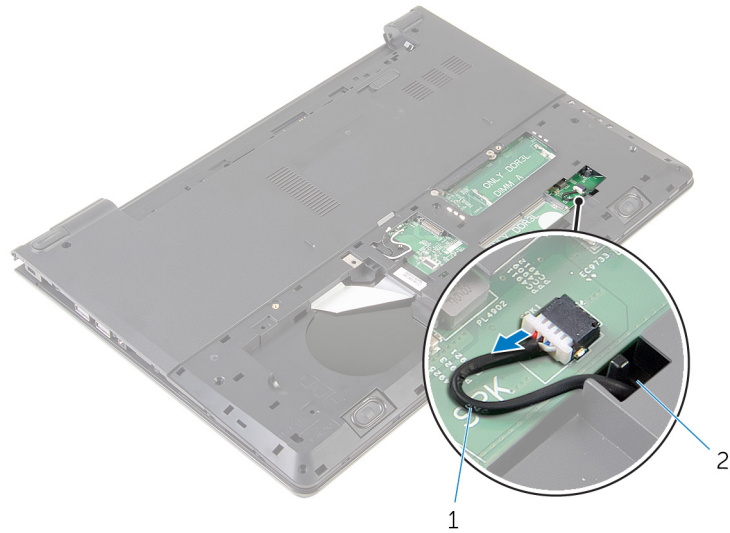
- [Prerequisites](#)
- [Procedure](#)

Prerequisites

1. Remove the [battery](#).
2. Remove the [base panel](#).
3. Follow the procedure from step 1 to step 3 in "Removing the [hard drive](#)".
4. Remove the [memory modules](#).
5. Remove the [wireless card](#).
6. Remove the [keyboard](#).
7. Follow the procedure from step 1 to step 8 in "Removing the [palm rest](#)".

Procedure

1. Disconnect the speaker cable from the system board.



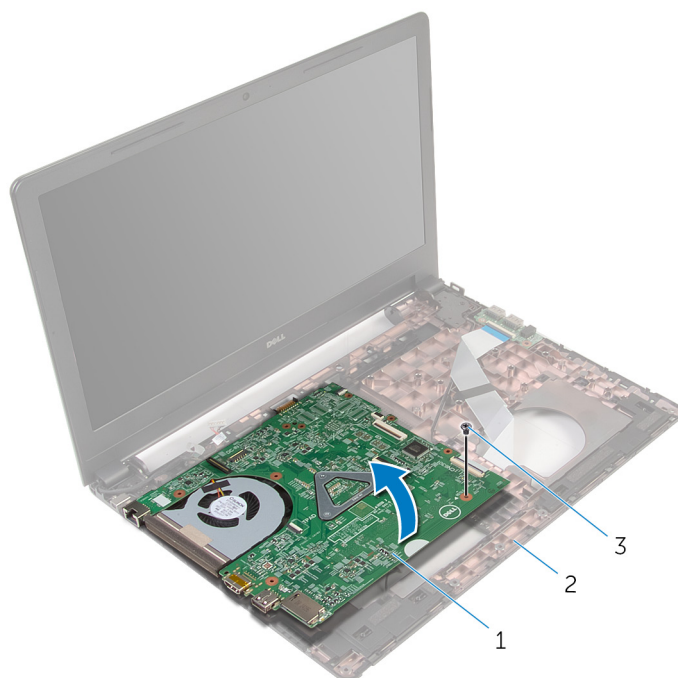
- 1. speaker cable
- 2. slot

2. Turn the computer over and open the display as far as possible.
3. Peel the tape that secures the display cable to the system board.
4. Lift the latch and disconnect the I/O-board cable from the system board.
5. Lift the latch and disconnect the display cable from the system board.
6. Disconnect the power-adaptor port cable from the system board.
7. Lift the latch and disconnect the I/O-board cable from the system board.



- 1. tape
- 2. display cable
- 3. latch
- 4. power-adaptor port cable
- 5. I/O-board cable
- 6. system board

8. Remove the screw that secures the system board to the computer base.
9. Lift the system board off the computer base.



1. system board
3. screw

2. computer base

10. Remove the [coin-cell battery](#).
11. Remove the [heat sink](#).

Ponovno postavljanje matične ploče

- i** **NAPOMENA** Before working inside your computer, read the safety information that shipped with your computer and follow the steps in [Before working inside your computer](#). After working inside your computer, follow the instructions in [After working inside your computer](#). For more safety best practices, see the Regulatory Compliance home page at www.dell.com/regulatory_compliance.
- i** **NAPOMENA** Your computer's Service Tag is stored in the system board. You must enter the Service Tag in the BIOS setup program after you replace the system board.
- i** **NAPOMENA** Replacing the system board removes any changes you have made to the BIOS using the BIOS setup program. You must make the desired changes again after you replace the system board.

Teme:

- [Postupak](#)
- [Koraci nakon postupka](#)

Postupak

1. Ponovno postavite [sklop hladila](#).
2. Ponovno postavite [bateriju na matičnoj ploči](#).
 - ⚠ OPREZ** Za izbjegavanje oštećenja matične ploče, provjerite da nema kabela ispod nje.
3. Poravnajte otvor za vijak na matičnoj ploči s otvorom za vijak na kućištu računala i postavite matičnu ploču na kućište računala.
4. Ponovno postavite vijak koji pričvršćuje matičnu ploču na kućište računala.
5. Spojite kabel priključka adaptera za napajanje na matičnu ploču.
6. Umetnite kabel zaslona u priključak na matičnoj ploči i pritisnite zasun kako biste pričvrstili kabel.
7. Zalijepite traku koja pričvršćuje kabel zaslona na matičnu ploču.
8. Umetnite kabel I/O ploče u priključak na matičnoj ploči i pritisnite zasun kako biste pričvrstili kabel.
9. Zatvorite zaslon i okrenite računalo.
10. Priključite kabel zvučnika na matičnu ploču.

Koraci nakon postupka

1. Slijedite postupak od koraka 2 do koraka 6 u „[Ponovno postavljanje oslonca za ruku](#)“.
2. Ponovno postavite [tipkovnicu](#).
3. Ponovno postavite [karticu za bežičnu vezu](#).
4. Ponovno postavite [memorijske module](#).
5. Slijedite postupak od koraka 3 do koraka 5 u „[Ponovno postavljanje tvrdog pogona](#)“.
6. Ponovno postavite [bateriju](#).
7. Ponovno postavite [osnovnu ploču](#).

Uklanjanje baterije na matičnoj ploči

ⓘ NAPOMENA Before working inside your computer, read the safety information that shipped with your computer and follow the steps in [Before working inside your computer](#). After working inside your computer, follow the instructions in [After working inside your computer](#). For more safety best practices, see the Regulatory Compliance home page at www.dell.com/regulatory_compliance.

⚠ OPREZ Removing the coin-cell battery resets the BIOS setup program's settings to default. It is recommended that you note the BIOS setup program's settings before removing the coin-cell battery.

Time:

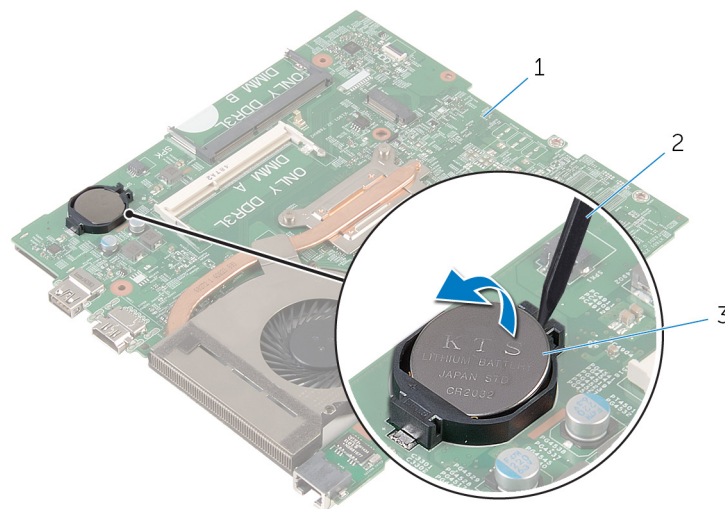
- [Prerequisites](#)
- [Procedure](#)

Prerequisites

1. Remove the [battery](#).
2. Remove the [base panel](#).
3. Follow the procedure from step 1 to step 3 in "Removing the [hard drive](#)".
4. Remove the [memory modules](#).
5. Remove the [wireless card](#).
6. Remove the [keyboard](#).
7. Follow the procedure from step 1 to step 8 in "Removing the [palm rest](#)".
8. Follow the procedure from step 1 to step 8 in "Removing the [system board](#)".

Procedure

Using a plastic scribe, gently pry the coin-cell battery out of the battery socket on the system board.



1. system board
3. coin-cell battery

2. plastic scribe

Ponovno postavljanje baterije na matičnoj ploči

NAPOMENA Before working inside your computer, read the safety information that shipped with your computer and follow the steps in [Before working inside your computer](#). After working inside your computer, follow the instructions in [After working inside your computer](#). For more safety best practices, see the Regulatory Compliance home page at www.dell.com/regulatory_compliance.

Teme:

- [Postupak](#)
- [Post-requisites](#)

Postupak

Pozitivnu stranu okrenite prema gore i bateriju na matičnoj ploči postavite u utor za bateriju na matičnoj ploči.

Post-requisites

1. Follow the procedure from step 3 to step 10 in “Replacing the [system board](#)”.
2. Follow the procedure from step 2 to step 6 in “Replacing the [palm rest](#)”.
3. Replace the [keyboard](#).
4. Replace the [wireless card](#).
5. Replace the [memory modules](#).
6. Follow the procedure from step 3 to step 5 in “Replacing the [hard drive](#)”.
7. Replace the [battery](#).
8. Replace the [base panel](#).

Uklanjanje sklopa hladila

i **NAPOMENA** Before working inside your computer, read the safety information that shipped with your computer and follow the steps in [Before working inside your computer](#). After working inside your computer, follow the instructions in [After working inside your computer](#). For more safety best practices, see the Regulatory Compliance home page at www.dell.com/regulatory_compliance.

i **NAPOMENA** The heat sink may become hot during normal operation. Allow sufficient time for the heat sink to cool before you touch it.

⚠ **OPREZ** For maximum cooling of the processor, do not touch the heat transfer areas on the heat sink. The oils in your skin can reduce the heat transfer capability of the thermal grease.

Teme:

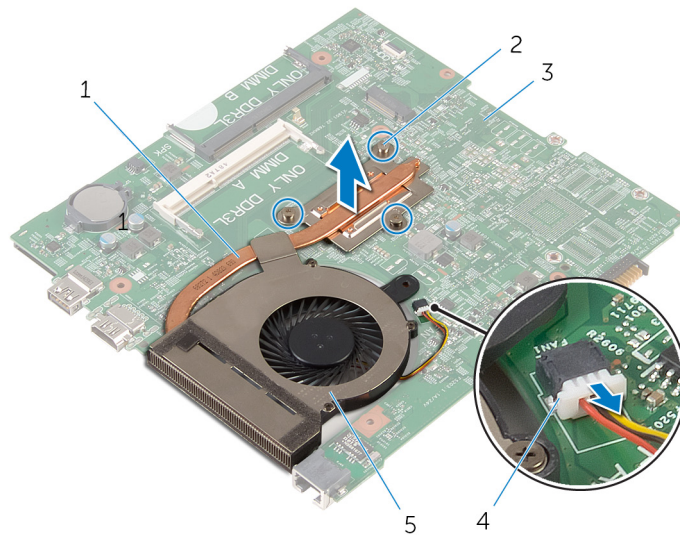
- [Prerequisites](#)
- [Procedure](#)

Prerequisites

1. Remove the [battery](#).
2. Remove the [base panel](#).
3. Follow the procedure from step 1 to step 3 in “Removing the [hard drive](#)”.
4. Remove the [memory modules](#).
5. Remove the [wireless card](#).
6. Remove the [keyboard](#).
7. Follow the procedure from step 1 to step 8 in “Removing the [palm rest](#)”.
8. Follow the procedure from step 1 to step 8 in “Removing the [system board](#)”.

Procedure

1. Turn the system board over.
2. In sequential order, as indicated on the heat sink, loosen the captive screws that secure the cooling assembly to the system board.
3. Disconnect the fan cable from the system board.



- 1. cooling assembly
- 3. system board
- 5. fan

- 2. captive screws (3)
- 4. fan cable

- 4. Lift the cooling assembly off the system board.
- 5. Remove the fan.

Ponovno postavljanje sklopa hladila

i **NAPOMENA** Before working inside your computer, read the safety information that shipped with your computer and follow the steps in [Before working inside your computer](#). After working inside your computer, follow the instructions in [After working inside your computer](#). For more safety best practices, see the Regulatory Compliance home page at www.dell.com/regulatory_compliance.

Δ **OPREZ** Incorrect alignment of the heat sink can damage the system board and processor.

i **NAPOMENA** The original thermal grease can be reused if the original system board and heat sink are reinstalled together. If either the system board or the heat sink is replaced, use the thermal pad provided in the kit to ensure that thermal conductivity is achieved.

Teme:

- [Postupak](#)
- [Koraci nakon postupka](#)

Postupak

1. Ponovno postavite [ventilator](#).
2. Poravnajte vijke na sklopu hladila s otvorima za vijke na matičnoj ploči.
3. Redoslijedom, naznačenim na sklopu hladila, pritegnite pričvrstne vijke koji pričvršćuju sklop hladila na matičnu ploču.
4. Priključite kabel ventilatora na matičnu ploču.

Koraci nakon postupka

1. Slijedite postupak od koraka 3 do koraka 10 u „[Ponovno postavljanje matične ploče](#)“.
2. Slijedite postupak od koraka 2 do koraka 6 u „[Ponovno postavljanje oslonca za ruku](#)“.
3. Ponovno postavite [tipkovnicu](#).
4. Ponovno postavite [karticu za bežičnu vezu](#).
5. Ponovno postavite [memorijske module](#).
6. Slijedite postupak od koraka 3 do koraka 5 u „[Ponovno postavljanje tvrdog pogona](#)“.
7. Ponovno postavite [bateriju](#).
8. Ponovno postavite [osnovnu ploču](#).

Uklanjanje ventilatora

ⓘ NAPOMENA Before working inside your computer, read the safety information that shipped with your computer and follow the steps in [Before working inside your computer](#). After working inside your computer, follow the instructions in [After working inside your computer](#). For more safety best practices, see the Regulatory Compliance home page at www.dell.com/regulatory_compliance.

Teme:

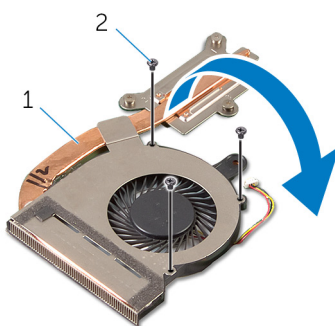
- [Prerequisites](#)
- [Procedure](#)

Prerequisites

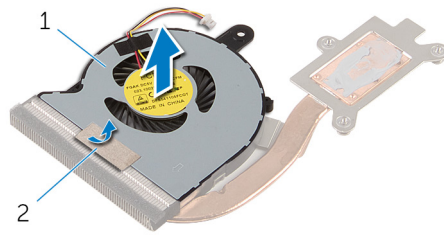
1. Remove the [battery](#).
2. Remove the [base panel](#).
3. Follow the procedure from step 1 to step 3 in “Removing the [hard drive](#)”.
4. Remove the [memory modules](#).
5. Remove the [wireless card](#).
6. Remove the [keyboard](#).
7. Follow the procedure from step 1 to step 8 in “Removing the [palm rest](#)”.
8. Follow the procedure from step 1 to step 8 in “Removing the [system board](#)”.
9. Follow the procedure from step 1 to step 4 in “Removing the [heat sink](#)”.

Procedure

1. Remove the screws that secure the fan to the heat sink.



1. cooling assembly
 2. screws (3)
2. Turn the cooling assembly over.
 3. Peel off the tape that secures the fan to the heat sink.
 4. Lift the fan off the heat sink.



1. fan

2. tape

Ponovno postavljanje ventilatora

ⓘ NAPOMENA Before working inside your computer, read the safety information that shipped with your computer and follow the steps in [Before working inside your computer](#). After working inside your computer, follow the instructions in [After working inside your computer](#). For more safety best practices, see the Regulatory Compliance home page at www.dell.com/regulatory_compliance.

Teme:

- [Postupak](#)
- [Post-requisites](#)

Postupak

1. Postavite ventilator na sklop hladila.
2. Zalijepite traku koja pričvršćuje ventilator na sklop hladila.
3. Preokrenite sklop hladila.
4. Ponovno postavite vijke koji pričvršćuju ventilator na sklop hladila.

Post-requisites

1. Follow the procedure from step 2 to step 4 in “Replacing the [heat sink](#)”.
2. Follow the procedure from step 3 to step 10 in “Replacing the [system board](#)”.
3. Follow the procedure from step 2 to step 6 in “Replacing the [palm rest](#)”.
4. Replace the [keyboard](#).
5. Replace the [wireless card](#).
6. Replace the [memory modules](#).
7. Follow the procedure from step 3 to step 5 in “Replacing the [hard drive](#)”.
8. Replace the [battery](#).
9. Replace the [base panel](#).

Uklanjanje sklopa zaslona

ⓘ NAPOMENA Before working inside your computer, read the safety information that shipped with your computer and follow the steps in [Before working inside your computer](#). After working inside your computer, follow the instructions in [After working inside your computer](#). For more safety best practices, see the Regulatory Compliance home page at www.dell.com/regulatory_compliance.

Teme:

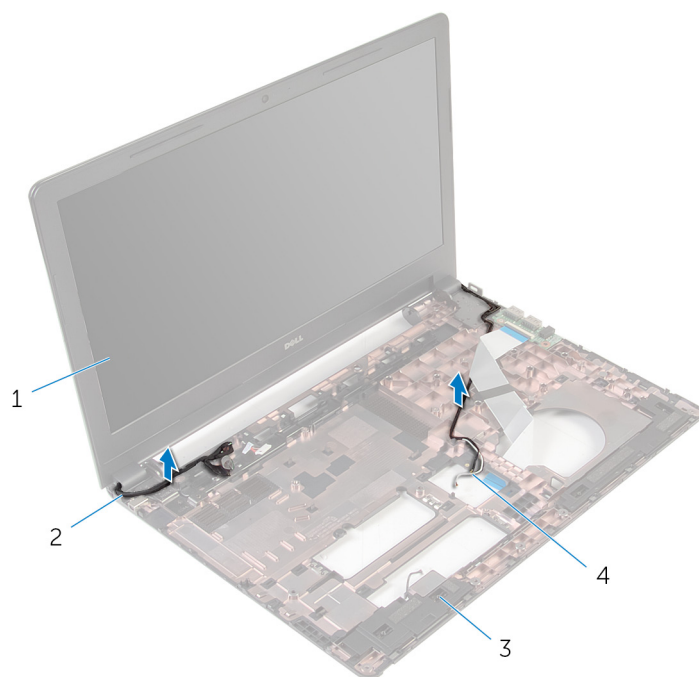
- [Prerequisites](#)
- [Postupak](#)

Prerequisites

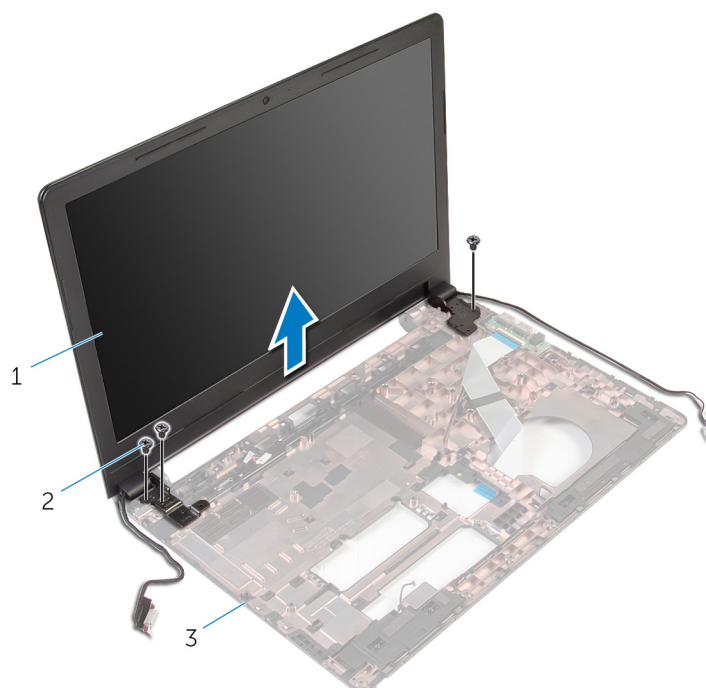
1. Remove the [battery](#).
2. Remove the [base panel](#).
3. Follow the procedure from step 1 to step 3 in “Removing the [hard drive](#)”.
4. Remove the [memory modules](#).
5. Remove the [wireless card](#).
6. Remove the [keyboard](#).
7. Follow the procedure from step 1 to step 8 in “Removing the [palm rest](#)”.
8. Follow the procedure from step 1 to step 8 in “Removing the [system board](#)”.

Postupak

1. Okrenite računalo i do kraja otvorite zaslon.
2. Zapišite kuda je proveden antenski kabel i uklonite kabel iz vodilica na kućištu računala.
3. Zapišite kuda je proveden kabel zaslona i uklonite kabel iz vodilica na kućištu računala.



- 1. sklop zaslona
 - 2. kabel zaslona
 - 3. kućište računala
 - 4. antenski kabeli (2)
4. Uklonite vijke koji pričvršćuju šarke zaslona na kućište računala.



- 1. sklop zaslona
 - 2. vijci (3)
 - 3. kućište računala
5. Pažljivo podignite sklop zaslona iz kućišta računala.

Ponovno postavljanje sklopa zaslona

ⓘ NAPOMENA Before working inside your computer, read the safety information that shipped with your computer and follow the steps in [Before working inside your computer](#). After working inside your computer, follow the instructions in [After working inside your computer](#). For more safety best practices, see the Regulatory Compliance home page at www.dell.com/regulatory_compliance.

Teme:

- [Postupak](#)
- [Koraci nakon postupka](#)

Postupak

1. Poravnajte otvore za vijke na šarkama zaslona s otvorima za vijke na kućištu računala.
2. Ponovno postavite vijke koji pričvršćuju šarke zaslona na kućište računala.
3. Provučite kabel zaslona kroz vodilice na kućištu računala.
4. Usmjerite antenske kabele kroz vodilice i provucite kabele kroz utor na kućištu računala.
5. Zatvorite zaslon i okrenite računalo.

Koraci nakon postupka

1. Slijedite postupak od koraka 3 do koraka 10 u „[Ponovno postavljanje matične ploče](#)“.
2. Slijedite postupak od koraka 2 do koraka 6 u „[Ponovno postavljanje oslonca za ruku](#)“.
3. Ponovno postavite [tipkovnicu](#).
4. Ponovno postavite [karticu za bežičnu vezu](#).
5. Ponovno postavite [memorijske module](#).
6. Slijedite postupak od koraka 3 do koraka 5 u „[Ponovno postavljanje tvrdog pogona](#)“.
7. Ponovno postavite [osnovnu ploču](#).
8. Ponovno postavite [bateriju](#).

Uklanjanje priključka adaptera za napajanje

ⓘ NAPOMENA Before working inside your computer, read the safety information that shipped with your computer and follow the steps in [Before working inside your computer](#). After working inside your computer, follow the instructions in [After working inside your computer](#). For more safety best practices, see the Regulatory Compliance home page at www.dell.com/regulatory_compliance.

Teme:

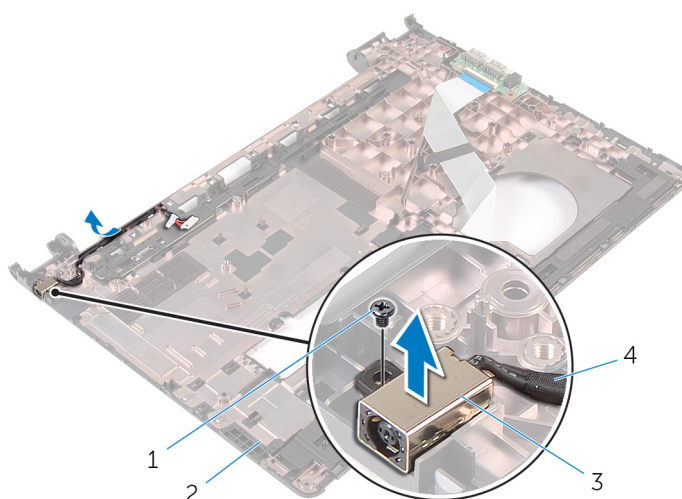
- [Prerequisites](#)
- [Postupak](#)

Prerequisites

1. Remove the [battery](#).
2. Remove the [base panel](#).
3. Follow the procedure from step 1 to step 3 in “Removing the [hard drive](#)”.
4. Remove the [memory modules](#).
5. Remove the [wireless card](#).
6. Remove the [keyboard](#).
7. Follow the procedure from step 1 to step 8 in “Removing the [palm rest](#)”.
8. Follow the procedure from step 1 to step 8 in “Removing the [system board](#)”.
9. Remove the [display assembly](#).

Postupak

1. Zapamtite kuda je proveden kabel adaptera za napajanje i uklonite kabel iz vodilica na kućištu računala.
2. Uklonite vijak kojim je priključak adaptera za napajanje pričvršćen za kućište računala.
3. Podignite ulaz priključka adaptera za napajanje s kabelom iz kućišta računala.



- | | |
|-------------------------------------|---|
| 1. vijak | 2. kućište računala |
| 3. priključak adaptera za napajanje | 4. kabel priključka adaptera za napajanje |

Ponovno postavljanje priključka adaptera za napajanje

i **NAPOMENA** Before working inside your computer, read the safety information that shipped with your computer and follow the steps in [Before working inside your computer](#). After working inside your computer, follow the instructions in [After working inside your computer](#). For more safety best practices, see the Regulatory Compliance home page at www.dell.com/regulatory_compliance.

Teme:

- [Postupak](#)
- [Koraci nakon postupka](#)

Postupak

1. Postavite priključak adaptera za napajanje u utor na kućištu računala.
2. Spojite kabel priključka adaptera za napajanje na matičnu ploču.
3. Provucite kabel priključka adaptera za napajanje kroz vodilice na kućištu računala.

Koraci nakon postupka

1. Ponovno postavite [sklop zaslona](#).
2. Slijedite postupak od koraka 3 do koraka 10 u „[Ponovno postavljanje matične ploče](#)“.
3. Slijedite postupak od koraka 2 do koraka 6 u „[Ponovno postavljanje oslonca za ruku](#)“.
4. Ponovno postavite [tipkovnicu](#).
5. Ponovno postavite [karticu za bežičnu vezu](#).
6. Ponovno postavite [memorijske module](#).
7. Slijedite postupak od koraka 3 do koraka 5 u „[Ponovno postavljanje tvrdog pogona](#)“.
8. Ponovno postavite [osnovnu ploču](#).
9. Ponovno postavite [bateriju](#).

Uklanjanje okvira zaslona

ⓘ NAPOMENA Before working inside your computer, read the safety information that shipped with your computer and follow the steps in [Before working inside your computer](#). After working inside your computer, follow the instructions in [After working inside your computer](#). For more safety best practices, see the Regulatory Compliance home page at www.dell.com/regulatory_compliance.

Teme:

- [Prerequisites](#)
- [Postupak](#)

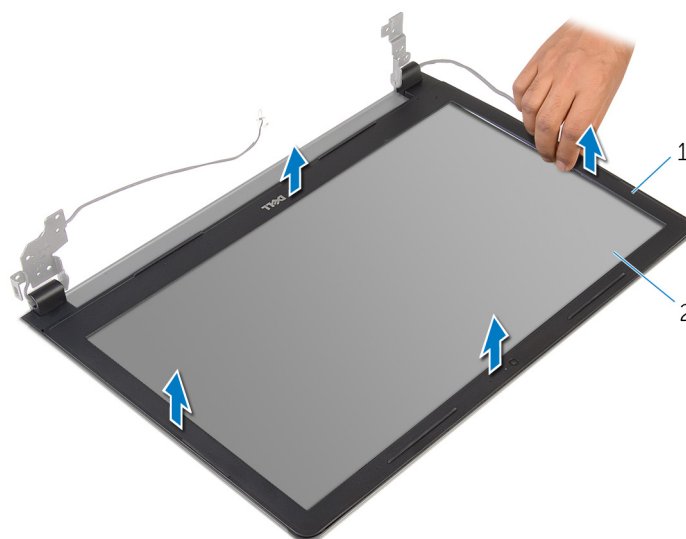
Prerequisites

ⓘ NOTE: These instructions are applicable only for laptops with a non-touch screen display.

1. Remove the [battery](#).
2. Remove the [base panel](#).
3. Follow the procedure from step 1 to step 3 in “Removing the [hard drive](#)”.
4. Remove the [memory modules](#).
5. Remove the [wireless card](#).
6. Remove the [keyboard](#).
7. Follow the procedure from step 1 to step 8 in “Removing the [palm rest](#)”.
8. Follow the procedure from step 1 to step 8 in “Removing the [system board](#)”.
9. Remove the [display assembly](#).

Postupak

1. Prstima pažljivo odvojite unutarnje rubove okvira zaslona.



1. okvir zaslona
2. Podignite okvir zaslona sa sklopa zaslona.

2. ploču zaslona

Ponovno postavljanje okvira zaslona

ⓘ NAPOMENA Before working inside your computer, read the safety information that shipped with your computer and follow the steps in [Before working inside your computer](#). After working inside your computer, follow the instructions in [After working inside your computer](#). For more safety best practices, see the Regulatory Compliance home page at www.dell.com/regulatory_compliance.

Teme:

- [Postupak](#)
- [Koraci nakon postupka](#)

Postupak

Poravnajte okvir zaslona sa stražnjim poklopcem zaslona i lagano umetnite okvir zaslona na mjesto.

Koraci nakon postupka

1. Ponovno postavite [sklop zaslona](#).
2. Slijedite postupak od koraka 3 do koraka 10 u „[Ponovno postavljanje matične ploče](#)“.
3. Slijedite postupak od koraka 2 do koraka 6 u „[Ponovno postavljanje oslonca za ruku](#)“.
4. Ponovno postavite [tipkovnicu](#).
5. Ponovno postavite [karticu za bežičnu vezu](#).
6. Ponovno postavite [memorijske module](#).
7. Slijedite postupak od koraka 3 do koraka 5 u „[Ponovno postavljanje tvrdog pogona](#)“.
8. Ponovno postavite [osnovnu ploču](#).
9. Ponovno postavite [bateriju](#).

Uklanjanje ploče zaslona

ⓘ NAPOMENA Before working inside your computer, read the safety information that shipped with your computer and follow the steps in [Before working inside your computer](#). After working inside your computer, follow the instructions in [After working inside your computer](#). For more safety best practices, see the Regulatory Compliance home page at www.dell.com/regulatory_compliance.

Teme:

- [Prerequisites](#)
- [Postupak](#)

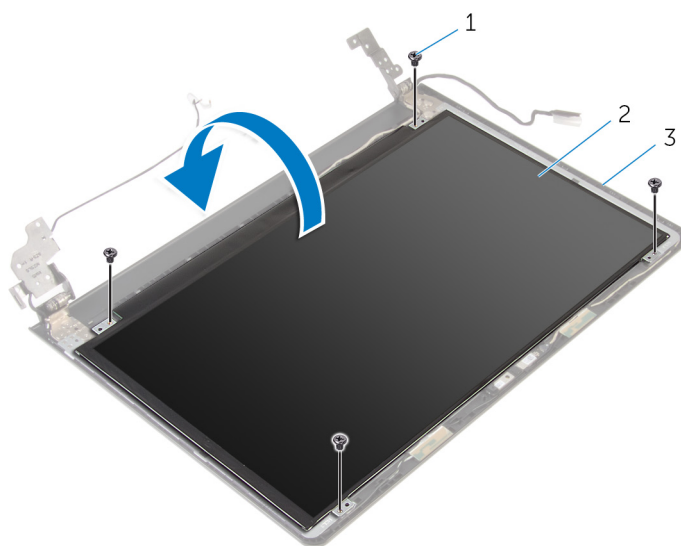
Prerequisites

ⓘ NOTE: These instructions are applicable only for laptops with a non-touch screen display.

1. Remove the [battery](#).
2. Remove the [base panel](#).
3. Follow the procedure from step 1 to step 3 in “Removing the [hard drive](#)”.
4. Remove the [memory modules](#).
5. Remove the [wireless card](#).
6. Remove the [keyboard](#).
7. Follow the procedure from step 1 to step 8 in “Removing the [palm rest](#)”.
8. Follow the procedure from step 1 to step 8 in “Removing the [system board](#)”.
9. Remove the [display assembly](#).
10. Remove the [display bezel](#).

Postupak

1. Uklonite vijke koji ploču zaslona pričvršćuju za stražnji pokrov zaslona.
2. Preokrenite ploču zaslona.

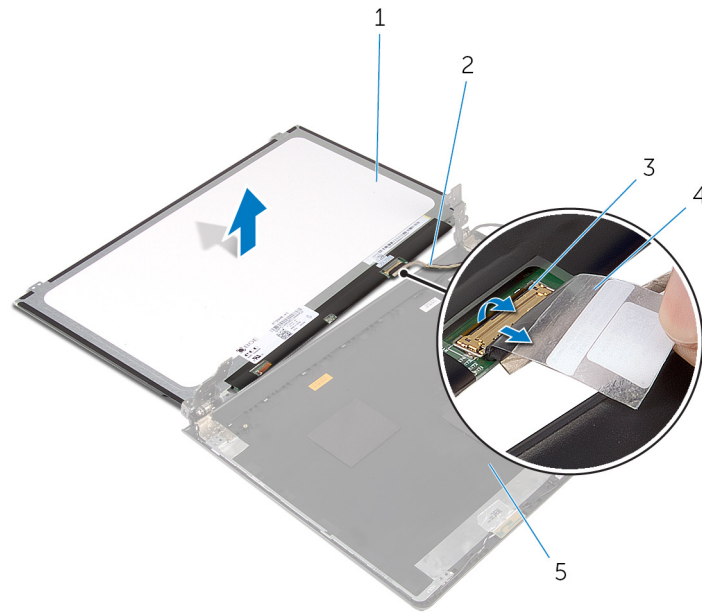


1. vijci (4)

2. ploču zaslona

3. stražnji poklopac zaslona

3. Odlijepite traku koja pričvršćuje kabel zaslona na stražnji poklopac zaslona.
4. Podignite zasun priključka i odspojite kabel zaslona iz stražnjeg poklopca zaslona.
5. Podignite ploču zaslona sa stražnjeg poklopca zaslona.



1. ploču zaslona

2. kabel zaslona

3. zasun

4. traka

Ponovno postavljanje ploče zaslona

ⓘ NAPOMENA Before working inside your computer, read the safety information that shipped with your computer and follow the steps in [Before working inside your computer](#). After working inside your computer, follow the instructions in [After working inside your computer](#). For more safety best practices, see the Regulatory Compliance home page at www.dell.com/regulatory_compliance.

Teme:

- [Postupak](#)
- [Koraci nakon postupka](#)

Postupak

1. Umetnite kabel zaslona u priključak na stražnjem poklopcu zaslona i pritisnite zasun kako biste pričvrstili kabel.
2. Zalijepite traku koja pričvršćuje kabel zaslona na stražnji poklopac zaslona.
3. Preokrenite ploču zaslona i postavite je na stražnji poklopac zaslona.
4. Poravnajte otvore za vijke na ploči zaslona s otvorima za vijke na stražnjem poklopcu zaslona.
5. Ponovno postavite vijke koji ploču zaslona pričvršćuju za stražnji poklopac zaslona.

Koraci nakon postupka

1. Ponovno postavite [okvir zaslona](#).
2. Ponovno postavite [sklop zaslona](#).
3. Slijedite postupak od koraka 3 do koraka 10 u „[Ponovno postavljanje matične ploče](#)“.
4. Slijedite postupak od koraka 2 do koraka 6 u „[Ponovno postavljanje oslonca za ruku](#)“.
5. Ponovno postavite [tipkovnicu](#).
6. Ponovno postavite [karticu za bežičnu vezu](#).
7. Ponovno postavite [memorijske module](#).
8. Slijedite postupak od koraka 3 do koraka 5 u „[Ponovno postavljanje tvrdog pogona](#)“.
9. Ponovno postavite [osnovnu ploču](#).
10. Ponovno postavite [bateriju](#).

Uklanjanje kamere

i **NAPOMENA** Before working inside your computer, read the safety information that shipped with your computer and follow the steps in [Before working inside your computer](#). After working inside your computer, follow the instructions in [After working inside your computer](#). For more safety best practices, see the Regulatory Compliance home page at www.dell.com/regulatory_compliance.

Teme:

- [Prerequisites](#)
- [Postupak](#)

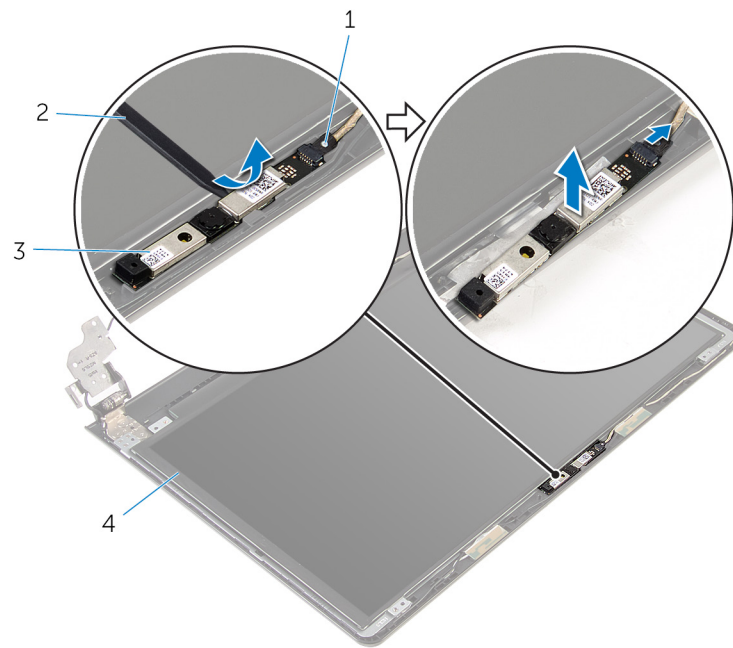
Prerequisites

i **NOTE:** These instructions are applicable only for laptops with a non-touch screen display.

1. Remove the [battery](#).
2. Remove the [base panel](#).
3. Follow the procedure from step 1 to step 3 in “Removing the [hard drive](#)”.
4. Remove the [memory modules](#).
5. Remove the [wireless card](#).
6. Remove the [keyboard](#).
7. Remove the [palm rest](#).
8. Remove the [system board](#).
9. Remove the [display assembly](#).
10. Remove the [display bezel](#).

Postupak

1. Pomoću plastičnog šila lagano izdignite kameru sa stražnjeg poklopca zaslona.
2. Iskopčajte kabel kamere iz kamere.



1. kabel kamere
3. kamera

2. plastično šilo

Ponovno postavljanje kamere

i **NAPOMENA** Before working inside your computer, read the safety information that shipped with your computer and follow the steps in [Before working inside your computer](#). After working inside your computer, follow the instructions in [After working inside your computer](#). For more safety best practices, see the Regulatory Compliance home page at www.dell.com/regulatory_compliance.

Teme:

- [Koraci nakon postupka](#)
- [Postupak](#)

Koraci nakon postupka

1. Ponovno postavite [okvir zaslona](#).
2. Ponovno postavite [sklop zaslona](#).
3. Ponovno postavite [matičnu ploču](#).
4. Ponovno postavite [oslonac za ruku](#).
5. Ponovno postavite [tipkovnicu](#).
6. Ponovno postavite [karticu za bežičnu vezu](#).
7. Ponovno postavite [memorijske module](#).
8. Slijedite postupak od koraka 3 do koraka 5 u „[Ponovno postavljanje tvrdog pogona](#)“.
9. Ponovno postavite [osnovnu ploču](#).
10. Ponovno postavite [bateriju](#).

Postupak

1. Priključite kabel kamere na kameru.
2. Poravnajte kameru s vodilicama poravnanja na stražnjem poklopcu zaslona i umetnite kameru na mjesto.

Uklanjanje šarki zaslona

i **NAPOMENA** Before working inside your computer, read the safety information that shipped with your computer and follow the steps in [Before working inside your computer](#). After working inside your computer, follow the instructions in [After working inside your computer](#). For more safety best practices, see the Regulatory Compliance home page at www.dell.com/regulatory_compliance.

Teme:

- [Prerequisites](#)
- [Postupak](#)

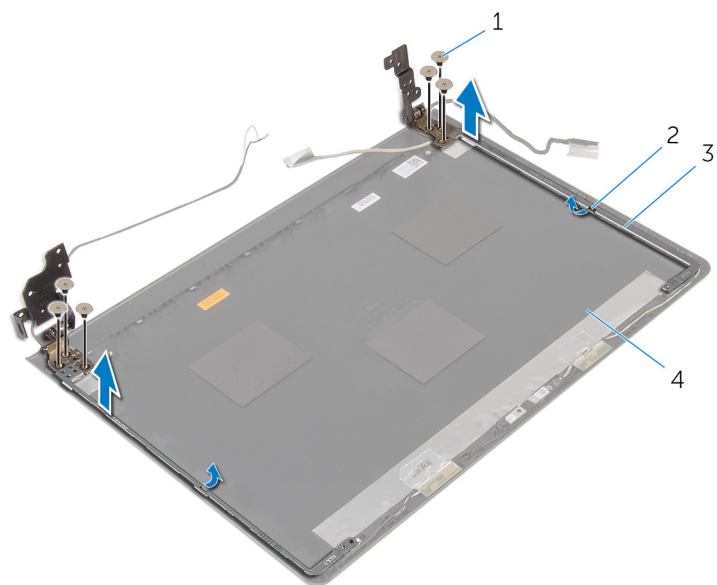
Prerequisites

i **NOTE:** These instructions are applicable only for laptops with a non-touch screen display.

1. Remove the [battery](#).
2. Remove the [base panel](#).
3. Follow the procedure from step 1 to step 3 in “Removing the [hard drive](#)”.
4. Remove the [memory modules](#).
5. Remove the [wireless card](#).
6. Remove the [keyboard](#).
7. Follow the procedure from step 1 to step 8 in “Removing the [palm rest](#)”.
8. Follow the procedure from step 1 to step 8 in “Removing the [system board](#)”.
9. Remove the [display assembly](#).
10. Remove the [display panel](#).
11. Remove the [display bezel](#).

Postupak

1. Uklonite vijke koji šarke zaslona pričvršćuju za stražnji pokrov zaslona.
2. Oslobodite šarke iz zasuna i podignite šarke zaslona sa stražnjeg poklopca zaslona.



1. vijci (6)

3. šarke zaslona (2)

2. zasuni (2)

4. stražnji pokrov zaslona

Ponovno postavljanje šarki zaslona

ⓘ NAPOMENA Before working inside your computer, read the safety information that shipped with your computer and follow the steps in [Before working inside your computer](#). After working inside your computer, follow the instructions in [After working inside your computer](#). For more safety best practices, see the Regulatory Compliance home page at www.dell.com/regulatory_compliance.

Teme:

- [Postupak](#)
- [Koraci nakon postupka](#)

Postupak


1. Umetnite šarke ispod jezička na stražnjem poklopcu zaslona.
2. Poravnajte otvore za vijke na šarkama zaslona s otvorima za vijke na stražnjem pokrovu zaslona.
3. Ponovno postavite vijke koji šarke zaslona pričvršćuju za stražnji pokrov zaslona.

Koraci nakon postupka

1. Ponovno postavite [okvir zaslona](#).
2. Ponovno postavite [ploču zaslona](#).
3. Ponovno postavite [sklop zaslona](#).
4. Slijedite postupak od koraka 3 do koraka 10 u „[Ponovno postavljanje matične ploče](#)“.
5. Slijedite postupak od koraka 2 do koraka 6 u „[Ponovno postavljanje oslonca za ruku](#)“.
6. Ponovno postavite [tipkovnicu](#).
7. Ponovno postavite [karticu za bežičnu vezu](#).
8. Ponovno postavite [memorijske module](#).
9. Slijedite postupak od koraka 3 do koraka 5 u „[Ponovno postavljanje tvrdog pogona](#)“.
10. Ponovno postavite [osnovnu ploču](#).
11. Ponovno postavite [bateriju](#).

Ažuriranje BIOS-a Flash postupkom

Možda budete trebali ažurirati BIOS kada je ažuriranje dostupno ili nakon zamijene matične ploče. za ažuriranje BIOS-a:

1. Uključite računalo.
2. Idite na www.dell.com/support.
3. Kliknite na **Podrška proizvodu**, upišite servisnu oznaku prijenosnog računala i kliknite **Pošalji**.
 **NAPOMENA** Ako nemate servisnu oznaku, koristite funkciju automatskog otkrivanja ili ručno pretražite za svoj model računala.
4. Kliknite na **Upravljački programi i preuzimanja**.
5. Odaberite operacijski sustav koji je instaliran na vašem računalu.
6. Pomaknite se prema dolje i proširite **BIOS**.
7. Kliknite na **Preuzmi datoteku** za preuzimanje najnovije verzije BIOS-a za vaše računalo.
8. Spremite datoteku po završetku preuzimanja, navigirajte u mapu gdje ste spremili BIOS datoteku za ažuriranje.
9. Dva puta kliknite ikonu datoteke za ažuriranje BIOS-a i slijedite upute na zaslonu.

Dobivanje pomoći i kontaktiranje tvrtke Dell

Izvori za samopomoć

Informacije i pomoć o Dell proizvodima i uslugama korištenjem ovih mrežnih izvora za samopomoć:

Informacije o Dell proizvodima i uslugama

Windows 8.1 i Windows 10

www.dell.com

aplikaciju Dell pomoć i podrška



Windows 10

Aplikacija Početak



Windows 8.1

Aplikacija Pomoć + savjeti



Pristup pomoći u Windows 8, Windows 8.1 i Windows 10

Pristup pomoći u Windows 7

Pomoć na mreži za operacijski sustav

U Windows tražilici upišite **Pomoć i podrška** i pritisnite **Enter**.

Kliknite **Start > Pomoć i podrška**.

www.dell.com/support/windows

www.dell.com/support/linux

www.dell.com/support

Informacije o rješavanju problema, korisničke priručnike, upute za postavljanje, specifikacije o proizvodu, blogovi s tehničkom pomoći, upravljački programi, ažuriranja softvera itd.

Saznajte o svom operacijskom sustavu, postavljanju i korištenju računala, izradi sigurnosne kopije, dijagnostikama itd.

Pogledajte *Ja i moj Dell* na www.dell.com/support/manuals.

Kontaktiranje tvrtke Dell

Za kontaktiranje tvrtke Dell radi prodaje, tehničke podrške ili problema s korisničkom uslugom, pogledajte www.dell.com/contactdell.

i **NAPOMENA** Dostupnost ovisi o državi i proizvodu, tako da neke usluge možda neće biti dostupne u vašoj zemlji.

i **NAPOMENA** Ako nemate aktivnu vezu s internetom, podatke za kontakt možete naći na računu kojeg ste dobili prilikom kupnje proizvoda, otpremnici, računu ili katalogu proizvoda tvrtke Dell.