




Dell Venue 10– 5050

User's Guide



Notes, Cautions, and Warnings

-  **NOTE:** A NOTE indicates important information that helps you make better use of your computer.
-  **CAUTION:** A CAUTION indicates either potential damage to hardware or loss of data and tells you how to avoid the problem.
-  **WARNING:** A WARNING indicates a potential for property damage, personal injury, or death.

Copyright © 2015 Dell Inc. All rights reserved. This product is protected by U.S. and international copyright and intellectual property laws. Dell™ and the Dell logo are trademarks of Dell Inc. in the United States and/or other jurisdictions. All other marks and names mentioned herein may be trademarks of their respective companies.

2015 -03

Rev. A00

Contents

1 Features	5
2 Charging the Battery	6
3 Inserting the Micro-SIM Card (Optional)	7
Inserting the MicroSD Card	7
4 Getting Started	9
Turning On or Off the Device	9
Finishing Android Setup	9
Customizing the Screen	9
Locking and Unlocking Your Device	10
Touch Tips	10
Right-Click	12
Status Bar	12
Screen Orientation	13
Keys and Functions	14
Apps and Widgets	14
5 Using Your Device	15
Contacts	15
Creating a Contact	15
Searching for a Contact	15
Text Entry	16
Managing Your Device's Storage	16
Checking Storage Space	16
Erasing App Data and Cache	16
Un-mounting the SD Card	17
Erasing All Data From Your Device	17
Internet	17
Connecting to the Internet Using Wi-Fi	17
Connecting to the Internet using mobile broadband	18
Using the airplane mode	18
Browsing the Internet	18
NFC	19
Email	21
Opening the Email App	21
Setting up an Email Account	21
Adding other Email accounts	21
Deleting an Email account on your device	21
Creating and sending Emails	22
Customizing Your Device	22
Display settings	22

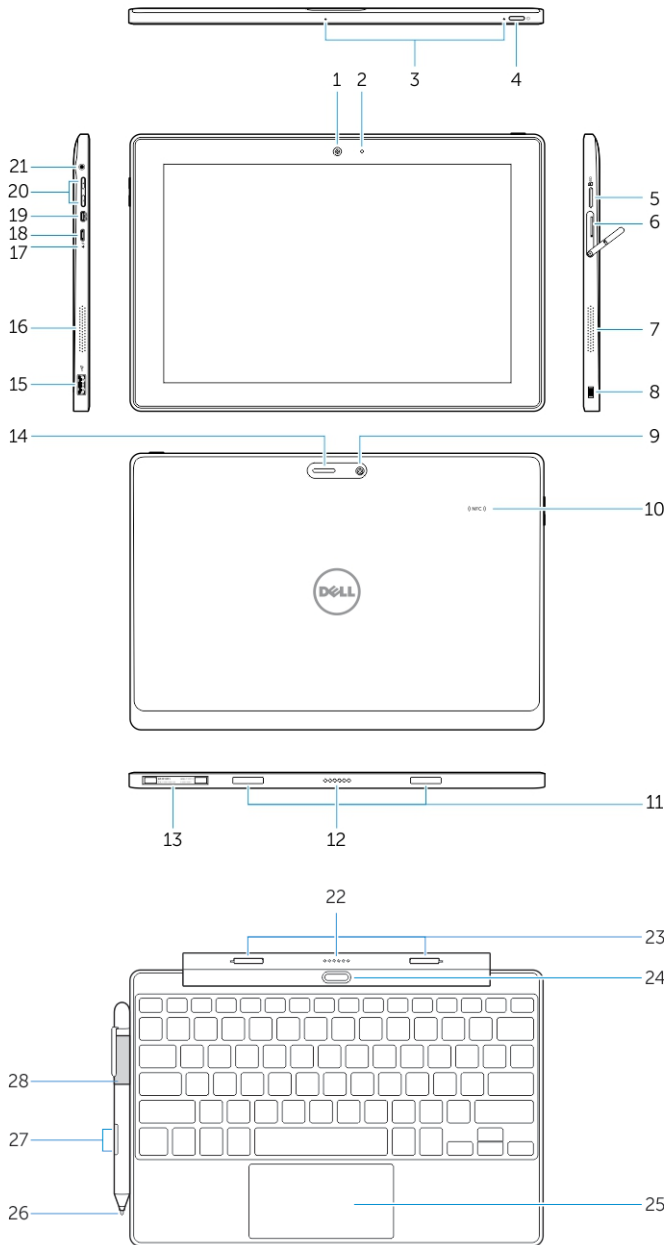


Sound & notification settings.....	22
Date, time, and time zone.....	22
Protecting Your Device.....	23
Screen-unlock pattern.....	23
PIN.....	23
Password.....	23
Apps.....	24
Camera.....	24
Copying files to and from the device.....	25
Bluetooth.....	25
Turning on Bluetooth and making the device discoverable.....	25
Pairing and connecting a Bluetooth device.....	25
Ending a Bluetooth connection.....	25
Unpairing.....	26
Gallery.....	26
Sharing or deleting albums.....	26
Browsing pictures and videos.....	26
Displaying a full picture.....	26
Calendar.....	26
Adding a new event.....	26
Clock.....	27
Setting an alarm.....	27
6 Getting Your Stylus Ready for Use.....	28
Using the Optional Stylus with Your Tablet	28
7 Docking Your Tablet to the Keyboard Dock	29
Undocking Your Tablet from the Keyboard Dock.....	29
8 Troubleshooting.....	31
9 Technical Specifications.....	33
10 Contacting Dell.....	37



Features

Table 1.



1. Camera
2. Camera-status light
3. Microphones
4. Power button
5. MicroSD memory card reader
6. Micro-SIM reader (LTE/HSPA+ models only)
7. Speaker
8. Noble security-cable slot
9. Back camera
10. Near Field Communication (NFC) reader
11. Dock-guide slots
12. Dock pins
13. Service-tag label
14. Wi-Fi / WWAN status light (optional)
15. USB 2.0 connector
16. Speaker
17. Battery-status light
18. Micro USB power connector
19. Micro HDMI connector
20. Volume buttons
21. Audio connector

Keyboard dock (optional)

22. Dock connector
23. Dock latches
24. Undock button
25. Touchpad

Stylus (optional)

26. Pen Tip (replaceable)
27. Buttons
28. Pen loop



Charging the Battery

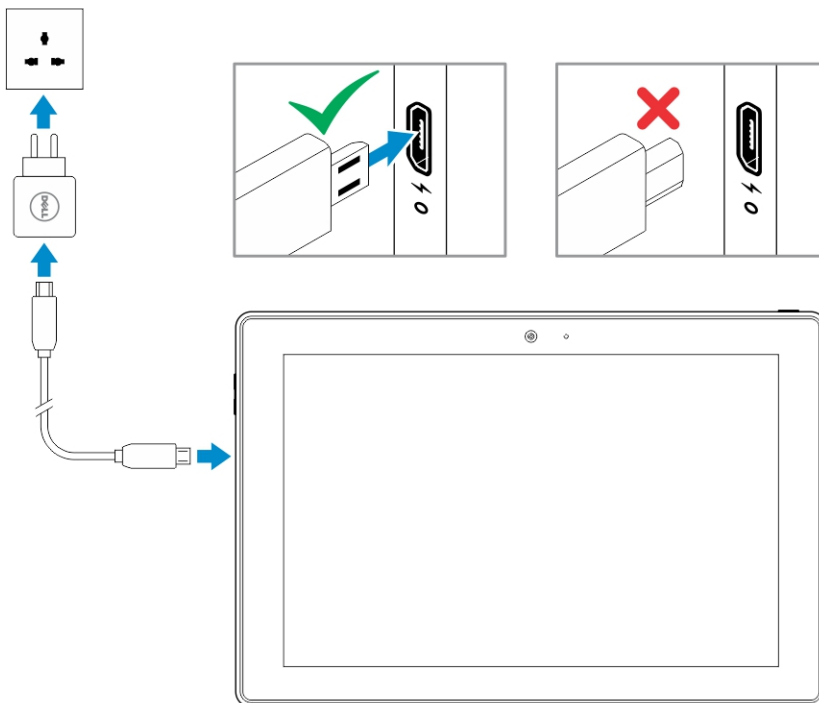
NOTE: Your device may not be fully charged when you receive it. It is recommended to charge the device for 4 hours for the first time.

CAUTION: Use only the power adapter and/or cable that shipped with the device. Using unauthorized power adapters or power cables may cause severe damage to your tablet.

1. Connect the micro-USB end of the USB cable to the USB port of the device.
2. Connect the other end of the USB cable to the adapter.
3. Connect the power adapter to an electrical outlet.

An animated icon  appears on the screen while the battery is being charged. When the battery is fully charged, the icon is static.

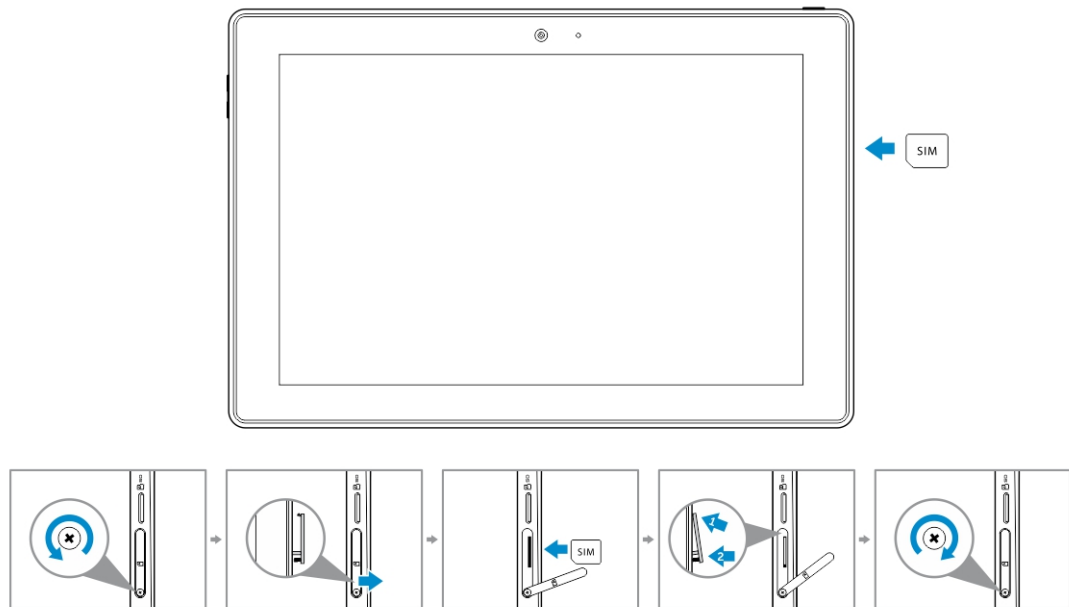
NOTE: Battery LED will be off when the battery is fully charged.



NOTE: When disconnecting the device from the adapter, disconnect the power adapter from the power outlet and then disconnect the cable from your device.

Inserting the Micro-SIM Card (Optional)

1. Loosen the screw that secures the card-slot door.
2. Open the card-slot door.
3. Insert the card into the respective slot and push the card in until it clicks in place.
4. Close the card-slot door.
5. Tighten the screw to secure the card-slot door.



CAUTION: Opening the card-slot door without loosening the screw may damage the door.

NOTE: The type of screw may vary depending on the tablet configuration.



NOTE: Make sure the card is correctly aligned and is inserted all the way.

NOTE: Turn off your device before inserting the micro-SIM card.

Inserting the MicroSD Card

1. Insert the microSD card into the respective slot and push the card in until it clicks in place.



-  **NOTE: Make sure the card is correctly aligned and is inserted all the way.**
-  **NOTE: Turn off your device before inserting the microSD card.**

Getting Started

Turning On or Off the Device

To turn on your device, press and hold the power button for 2 seconds.

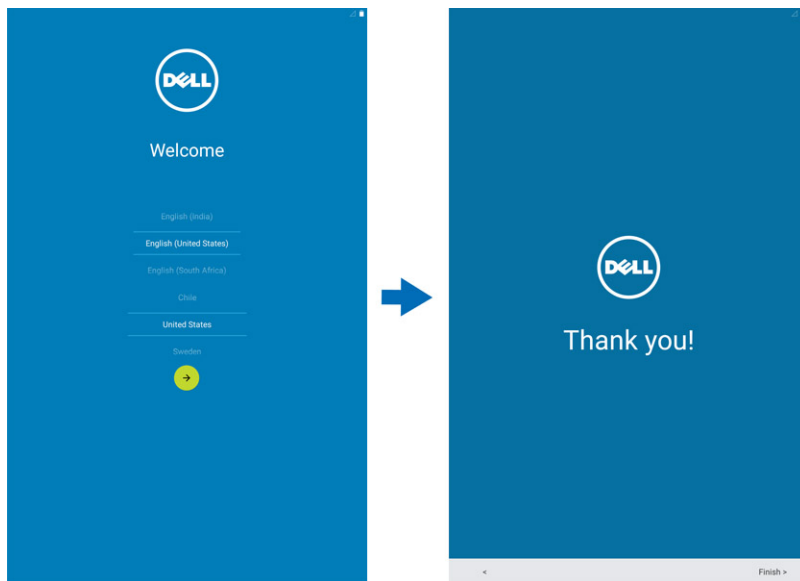
 **NOTE: When your device is fully discharged, it is recommended to connect the device to the power adapter for charging for 3-5 minutes and then turn on the device.**

To turn off your device, press the power button to open the options menu, and then select **Power off** →**OK**.

Finishing Android Setup

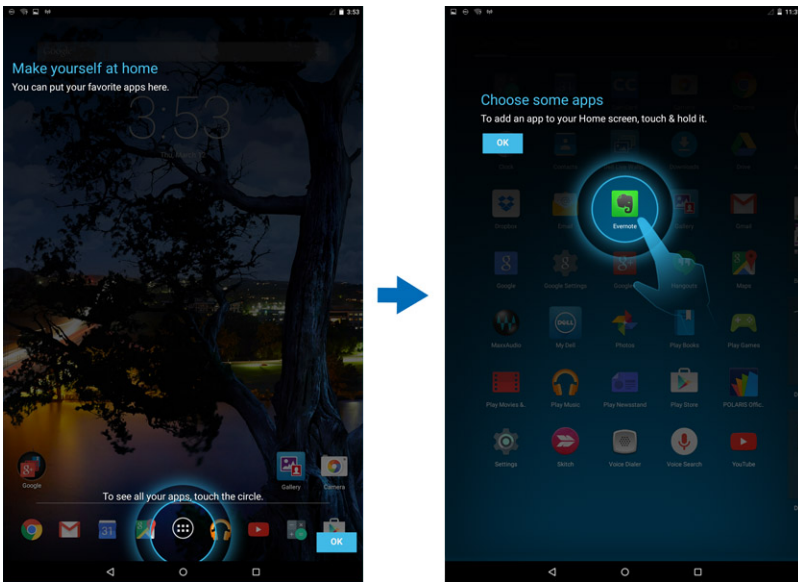
After you turn on your device for the first time, follow the prompts on the screen to finish Android setup.

You can configure settings such as language, Wi-Fi, date & time, sign-in to your Google account, and so on.



Customizing the Screen

After finishing android setup, follow the instructions on the screen to customize the home screen.




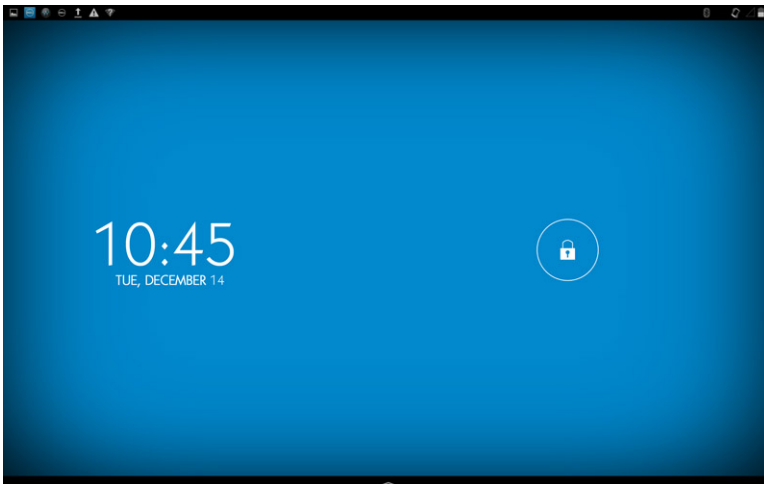
Locking and Unlocking Your Device

Press the power button to turn off the screen and lock your device.

You can also configure your device to automatically lock after a certain period of inactivity.

Tap  → **Settings** → **Display** → **Sleep** to set the time after which you want the device to enter sleep state and lock itself.

To unlock the screen, press the power button and then slide the lock icon  in any direction.



 **NOTE:** The procedure to unlock your device varies depending on the security method you choose.

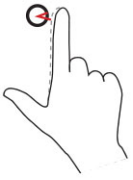
Touch Tips

Your device supports multi-touch. You can use the touch screen as follows:

Gesture Actions	Functions
Touch	<ul style="list-style-type: none"> Select items on the screen, including options, entries, images, and icons

Gesture Actions

Tap gently on the display with your fingertip.

**Functions**

- Start applications
- Touch buttons on the screen
- Input text using the on-screen keyboard

Touch and Hold

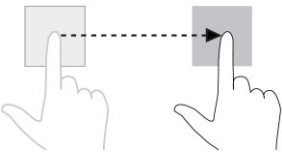
Touch and hold your finger on the display



- Display detailed information about an item
- Open the context menu of an item to perform further actions

Drag and Drop

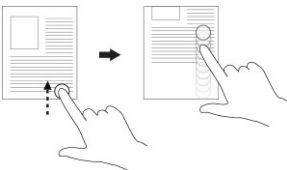
1. Touch and hold your finger on an item on the screen
2. Keeping your finger in contact with the display, move your fingertip to the desired location
3. Take your finger off the display to drop the item in the desired location



Move item such as images and icons on the screen

Swipe or Slide

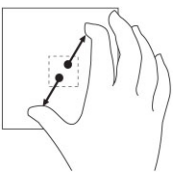
Move your finger in a vertical or horizontal direction on the display



- Scroll through the Start screen, web pages, lists, entries, photos, contacts, and so on
- Close an application. (Swipe the application to the bottom of the display)

Zoom in

Touch the display with two fingers and then move the fingers apart



Enlarge the view of an image or web page

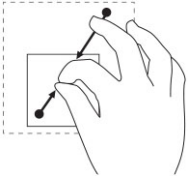
Zoom out

Reduce the view of an image or web page



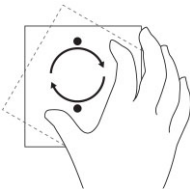
Gesture Actions**Functions**

Touch the display with two fingers and then move the fingers closer

**Rotate**

Rotate an object by 90 degrees

Touch the display with two or more fingers and then move the fingers in a clockwise or counter-clockwise arc

**Right-Click**

To perform a right-click on your tablet, touch and hold your finger for 2 seconds on any section of the screen or an icon and then release your finger.


The options menu appears on the screen.

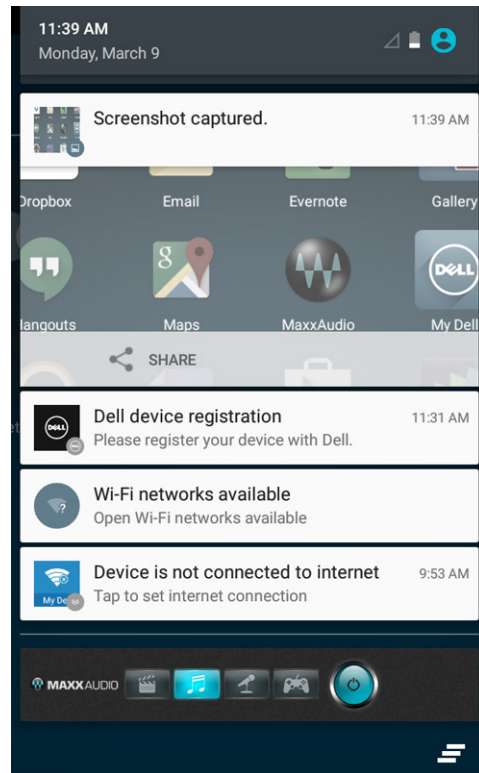
Status Bar

The status bar at the top of the screen displays notifications from apps, time, status of various devices such as battery, SIM card, Bluetooth, and so on.

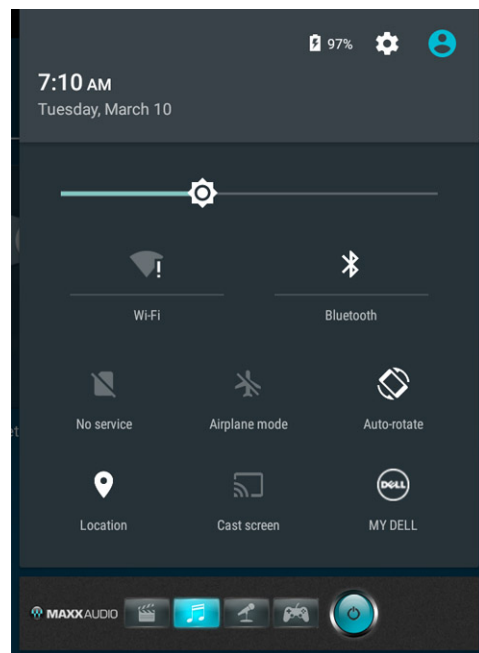


Table 2.

- 1 Notification panel displays notification icons to inform you of new emails, missed calls, unread messages, and so on. Slide the panel down to view the notifications and then tap a notification icon to view more details. Tap  to clear all the notifications.




- 2 Status panel displays the status icons for battery status, alarms, Bluetooth, network connection, and so on. Slide the panel down to access more settings and configuration options.



Screen Orientation

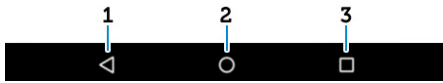
For optimal viewing experience, the screen orientation changes automatically depending on how you hold the device.

To toggle auto-rotate, slide down the status panel and tap the **AUTO ROTATE**  icon.



Keys and Functions

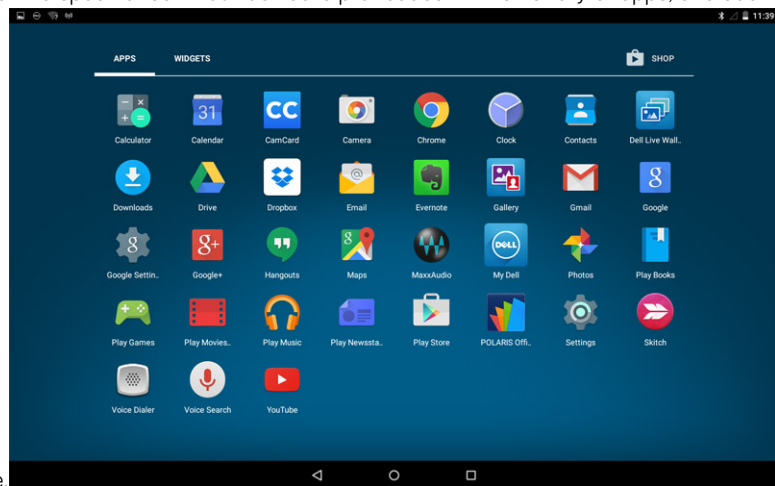
Your tablet has a multi-touch display. You can touch the screen to operate the tablet.



Gesture Actions	Functions
1 Back	<ul style="list-style-type: none"> Tap to return to the previous screen or to exit the current app. In text input mode, tap to close the on-screen keyboard.
2 Home	<ul style="list-style-type: none"> Tap to return to the main screen. Tap and hold to open Search.
3 Menu	Tap to open a list of recently-used apps.

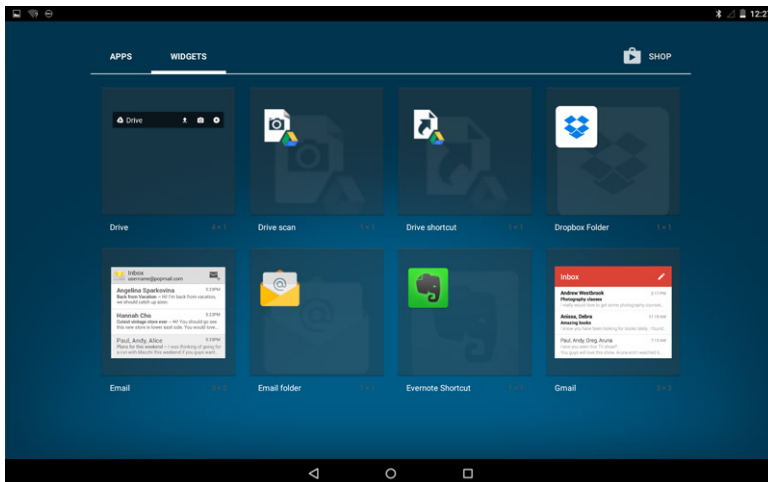
Apps and Widgets

- Apps:** Software that allows you to perform a specific task. Your device is pre-loaded with a variety of apps, and additional apps




can be downloaded from the Play Store.

- Widgets:** A small app that resides on the home screen and provides quick and easy access to information.




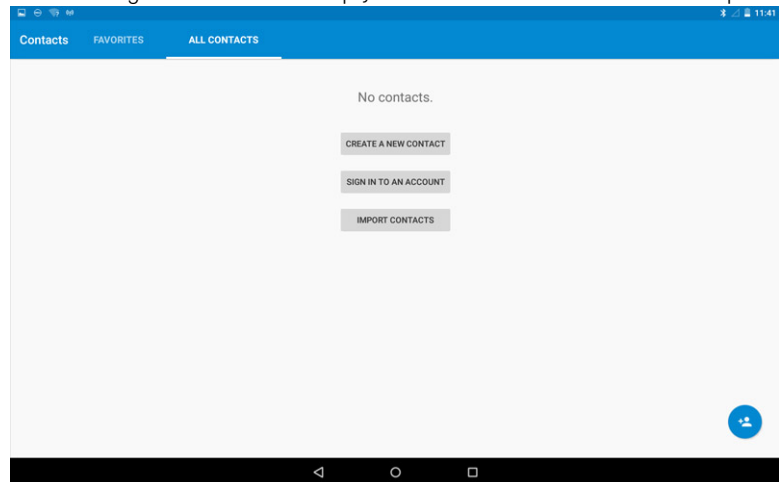
Using Your Device

Contacts

To view and manage your contacts, tap  → **Contacts**.

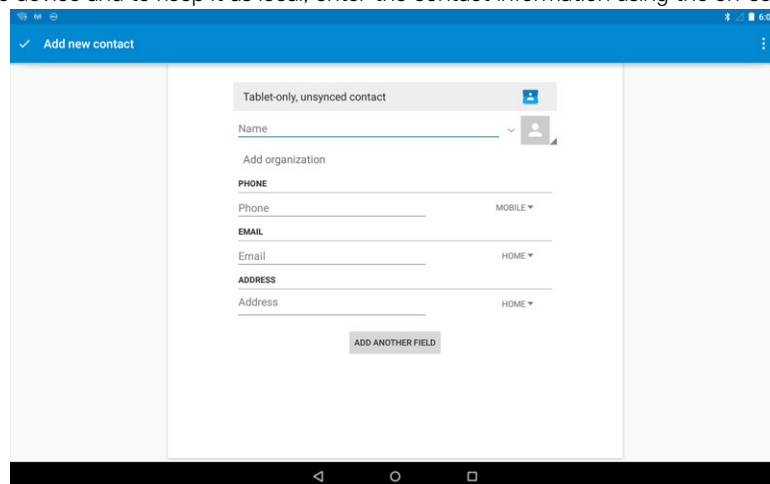
Creating a Contact

1. Tap  → **People** → **Create a new contact**.
2. Sign in to an existing Google account or create a new Google account to back up your contacts online or choose the option to



save the contacts on the device to keep local.

3. To save the contacts on the device and to keep it as local, enter the contact information using the on-screen keyboard and




then tap **Add new contact**.

Searching for a Contact


To locate a contact:



1. Scroll through the contact list until you find the desired contact.
2. Tap  to open the search bar, and then type either the contact's full or partial name in the **Find contacts** box. A list of matching contacts is displayed.

After you locate the desired contact, tap the contact's entry to view the details.

Text Entry

You can type text using the on-screen keyboard. To open the on-screen keyboard, tap a text box. To close the keyboard, tap the back key .

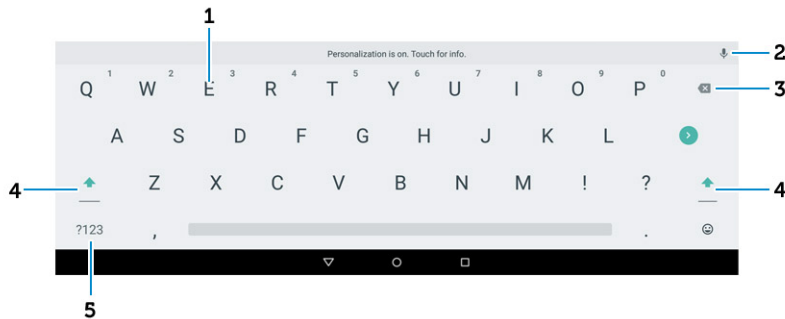




Table 3.

1	<ul style="list-style-type: none"> • Tap to type letters. • Tap and hold to type numbers.
2	<ul style="list-style-type: none"> • Tap to use voice input. The device enters the words that it can recognize. <p> NOTE: It is recommended to speak close to the microphone and use this feature in a quiet environment to improve speech-recognition accuracy.</p>
3	<ul style="list-style-type: none"> • Tap to delete a character, symbol, or a space to the left of the cursor. • Tap and hold to delete text to the left of the cursor.
4	<ul style="list-style-type: none"> • Tap once to show the uppercase keyboard for typing a capital letter. • Tap twice to enable the Caps Lock mode and tap once to change back to the lowercase mode.
5	<ul style="list-style-type: none"> • Tap to display the keys for typing numbers and punctuation marks.

Managing Your Device's Storage


Checking Storage Space

Tap  → **Settings** → **Storage**. The used, unused, and total space on the device's internal storage and microSD card is displayed.

Erasing App Data and Cache

1. Tap  → **Settings** → **Apps** → **DOWNLOADED/RUNNING/All**.
2. From the **Apps** list, tap the app whose cache or data you want to remove.
3. In the app screen, tap **Clear cache** or **Clear data**.


Un-mounting the SD Card

1. Tap  → **Settings** → **Storage**.
2. Tap **Unmount** → **OK** to remove the SD card.

 **CAUTION:** It is recommended that you unmount the SD card before removing it. Removing the SD card while it is in use may cause data loss or result in app errors.

Erasing All Data From Your Device

 **CAUTION:** Performing these steps erases all data, including your personal information and downloaded apps from your device. Make sure that you back up all the required data before you proceed.

1. Tap  → **Settings** → **Backup & reset** → **Factory data reset**.
2. Tap **Reset tablet**.
3. Read the warning and tap **Erase everything**.

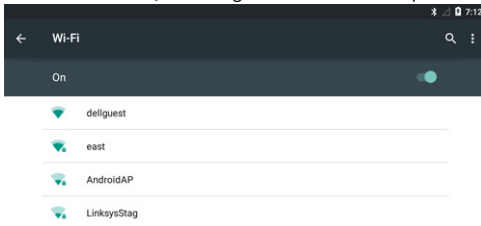
Internet

You can connect your device to Wi-Fi or mobile networks to access the Internet.

Connecting to the Internet Using Wi-Fi


 **NOTE:** The range and quality of the Wi-Fi signal is affected by the distance between the device and the wireless router, the number of connected devices, infrastructure, and objects through which the signal is transmitted.

1. Tap  → **Settings** → **Wi-Fi**.
2. Enable **Wi-Fi** by moving the slider to **On** position. The device scans for Wi-Fi networks in range.




3. Tap the network you want to connect to.
4. Type a password (if connecting to a secure network) and tap **Connect**.



 **NOTE:** To connect to a secured Wi-Fi network, you must type the security key. If you do not have the security key, contact the person who manages your Wi-Fi network or contact the router manufacturer.

 **NOTE:** To start a new search for available Wi-Fi networks, tap  → Refresh on the Wi-Fi screen.

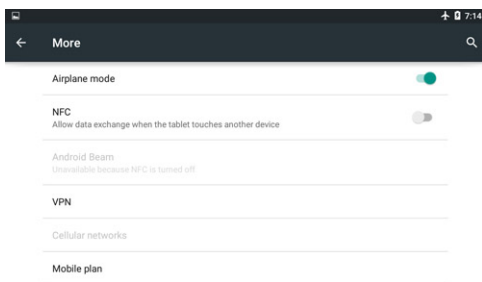
Connecting to the Internet using mobile broadband

1. Tap  → **Settings** → **Wi-Fi**, and then touch Wi-Fi to disable it.
2. The device automatically searches for the signal and connects to the network.
3. When the device is connected to a mobile-broadband network, the network type appears in the status bar.

Using the airplane mode


Putting the device in airplane mode disables all mobile and Wi-Fi connections. This feature is useful when wireless connectivity is strictly prohibited, such as on an airplane.

To enable airplane mode, tap  → **Settings** → **More...** → **Airplane mode**.

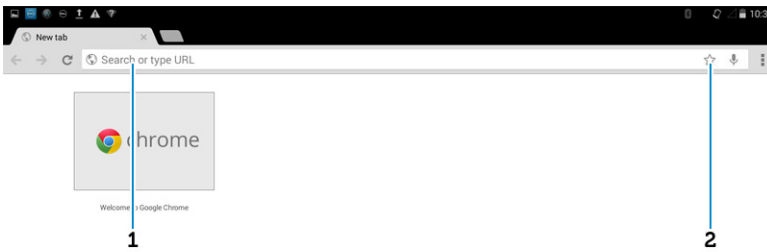


Browsing the Internet

Opening Chrome

Tap  → **Chrome** to open the chrome app.

Using the Chrome controls bar



1. Enter the web page address.
2. Add to the bookmark.

Viewing web pages

Slide your finger horizontally or vertically on the screen to scroll and view desired areas of a web page.

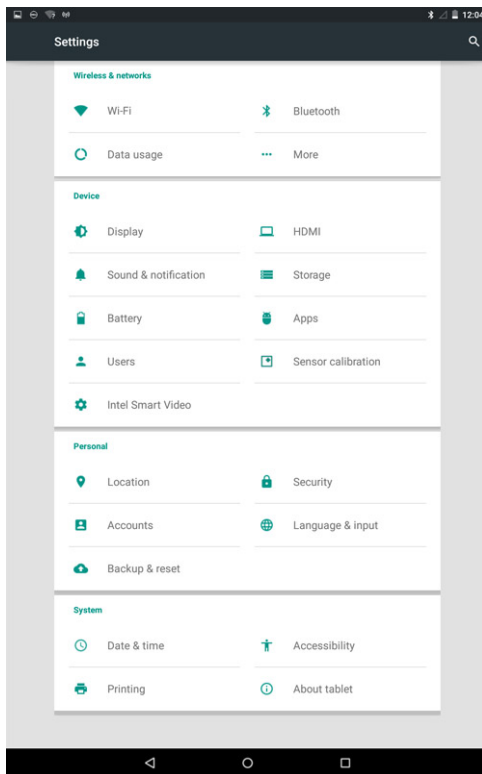
Zoom-in or zoom-out using the two-finger zoom.

Double-tap the desired area of a web page to switch between the magnified or normal views of the area.

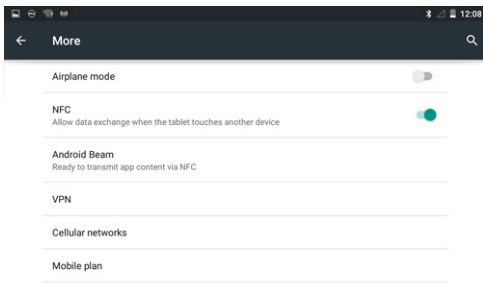
NFC

NFC enables short range communication between compatible devices. Follow these steps to use NFC:

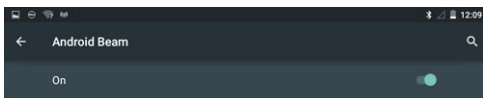
1. Tap ->**Settings**->**more...**



2. And then click on **NFC**.



3. If the Android Beam does not automatically turn on, just tap it and select **ON** to turn it on.



When this feature is turned on, you can beam app content to another NFC-capable device by holding the devices close together. For example, you can beam Browser pages, YouTube videos, People contacts, and more.



Just bring the devices together (typically back to back) and then touch your screen. The app determines what gets beamed.



Email

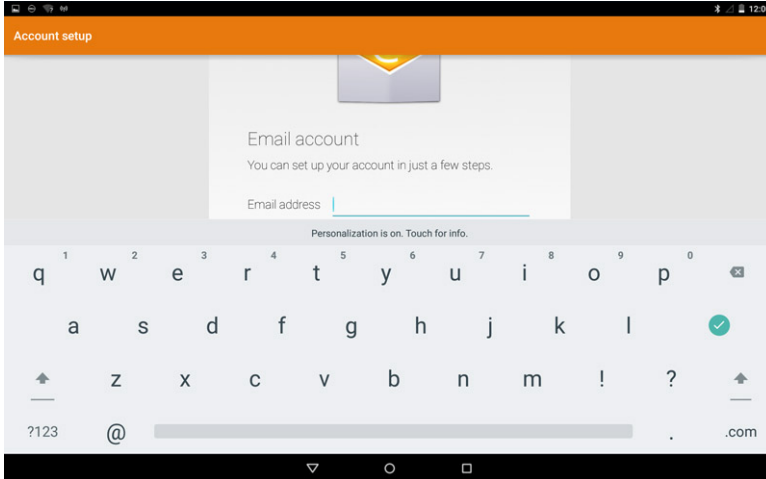
You can create POP3, IMAP, and exchange email accounts from web-based email services on your device.

Opening the Email App

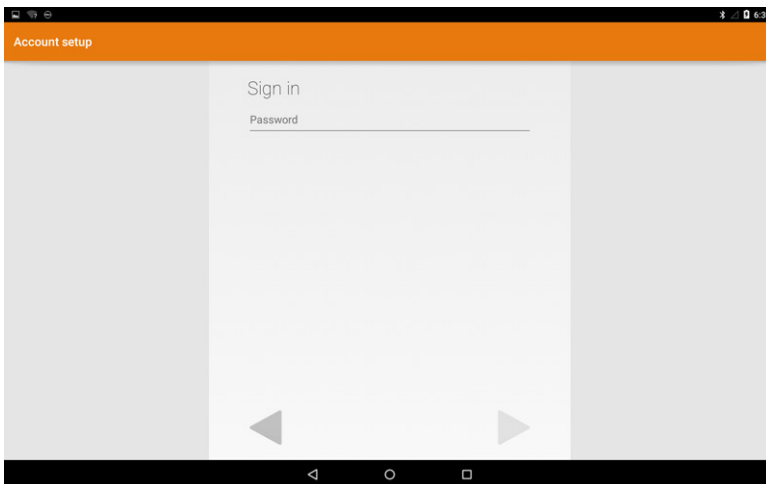
Tap  → **Email** 

Setting up an Email Account

1. On the email screen, type the email address and click next.



2. Type password of the email account and tap **Next** to display the account options screen to configure your email options.



3. After configuring the account options, tap **Next** to access your email

Adding other Email accounts



In the email screen, tap  → **Settings** → **ADD ACCOUNT** to set up another email account.

Deleting an Email account on your device

1. In the email account screen, tap  → **Settings** and then select the account you want to delete.
2. Tap **Remove account** and tap **OK**.



Creating and sending Emails

1. Tap  → **Email**.
2. Select an email account to use, if you have more than one account on your device
3. Tap  to compose a new mail.
4. Type the recipient's email address in the **To** field. If you are sending the email to multiple recipients, separate their email addresses with a comma.
5. Type the subject in the **Subject** field.
6. Compose your email content.
7. Tap **>** to send the email.

Customizing Your Device

You can configure settings such as display, sound, network, security and so on, using the **Settings** screen.

Display settings

Tap  → **Settings** → **Display** and then select the desired item under **Display** settings.

Table 4.

Brightness	Drag the slider to the right to increase brightness. Drag the slider to the left to decrease brightness. Tap OK to confirm the adjustment.
Wallpaper	Select a picture from the gallery, live wallpapers, photos or wallpapers, and then tap SET WALLPAPER to set it as the wallpaper.
Sleep	Select the time after which the device automatically goes into sleep mode.
Daydream	Select the pictures or animation to show while the device is docked or being charged.
Font size	Set your device's font size from Small, Normal, Large, and Huge .
Cast screen	Mirror the screen to a display device.

Sound & notification settings

To change the sound and ringtone settings:

Tap  → **Settings** → **Sound** and then select the desired item under **Sound** settings.


Table 5.

Volumes	Adjust the volume for media, notification, and alarms.
Default notification sound	Select a default ringtone for notifications
Touch sounds	Configure whether a sound is played every time you touch the screen.
Screen lock sound	Configure whether a sound is played when the screen is locked.

Date, time, and time zone

Your device automatically uses the network-provided date, time, and time zone by default.

To manually set the date, time, and time zone:

1. Tap  → **Settings** → **Date & time**, and disable the automatic date, time, and time zone.
2. Configure options such as set date, set time, select time zone, use 24-hour format, and choose date format.

Protecting Your Device


You can protect your device against unauthorized access by setting a face unlock, a pattern, a PIN, a password, or with a face unlock. After you configure any of these security options, your device prompts for the respective unlocking information before you can use the device.

Screen-unlock pattern


This security method requires you to create a pattern that you need to draw every time to unlock the device.

If incorrect unlock patterns are drawn for five consecutive times, the device forces a 30-second delay before you try again.

Creating a screen unlock pattern

1. Tap  → **Settings** → **Security** → **Screen lock** → **Pattern**.
2. Drag your finger to draw the unlock pattern by connecting at least four dots in a vertical, horizontal and/or diagonal direction. Take your finger off the screen when a pattern is drawn. The device records the pattern if it is correctly drawn.
3. Tap **Continue**.
4. Draw the pattern again and then tap **Confirm**.

Disabling or changing the screen unlock pattern

1. Tap  → **Settings** → **Security** → **Screen lock** → **Pattern**.
2. Draw your existing pattern.
3. Select **None** to disable screen unlock security or select **Pattern** to draw a new unlock pattern.

PIN

This security method requires you to type a PIN to unlock the device. If incorrect unlock PINs are entered for five consecutive times, the device forces a 30-second delay before you can try again.


Creating a PIN

1. Tap  → **Settings** → **Security** → **Screen lock** → **PIN**.
2. On the **Choose your PIN** page, type a PIN in the text box.

 **NOTE: Your PIN must be at least 4 characters.**

3. Tap **Continue** to proceed.
4. Type the PIN again to confirm.
5. Tap **OK**.

Disabling or changing PIN

1. Tap  → **Settings** → **Security** → **Screen lock** → **PIN**.
2. Type your existing PIN.
3. Select **None** to disable the PIN or select **PIN** to change the PIN.

Password

This security method requires you to enter a password that you need to enter every time to unlock the device.

If incorrect unlock passwords are entered for five consecutive times, the device forces a 30-second delay before you can try again.

Creating a password




1. Tap →  → **Settings** → **Security** → **Screen lock** → **Password**.
2. On the Choose your password page, type a password in the text box.

 **NOTE: Your password must be at least 4 characters long and must contain an alphabet/letter.**


3. Tap **Continue** to proceed.
4. Type the password again to confirm.
5. Tap **OK**.

Disabling or changing the password

1. Tap  → **Settings** → **Security** → **Screen lock** → **Password**.
2. Type the password you have enabled.
3. Select **None** to disable the password or select **Password** to change password.

Protecting your SIM card with the SIM lock password

You can protect your SIM card against unauthorized use with a PIN. After a PIN is enabled to lock your SIM, you will need to enter the PIN each time you turn on the device in order to unlock your SIM.

 **CAUTION: The SIM card will be permanently locked if you enter the incorrect PIN for three consecutive times. You must then enter the Personal Unlocking Key (PUK) to unlock the SIM card. Contact your service provider to obtain the PUK.**


Apps

Camera

Your device has a camera that allows you to capture and share high-quality pictures and videos.

Using the camera app



Tap  → **Camera** to open the application.

1. Viewfinder screen.
2. Tap to open or close the camera setting options.
Tap and then tap to switch between front and rear camera.
3. Tap to capture a picture or to record videos when the camera is in video mode.

Copying files to and from the device

You can transfer files between your device and computer using the device's internal storage or the optional microSD card. To transfer files, connect the device to your computer using the micro-USB cable.

Setting the SD card or the internal device storage as a USB drive

1. Connect the device to the computer by connecting the micro-USB end to the device and the other end to your computer.
2. The USB notification icon appears in the status bar's notification area when your device is connected to the computer.
3. Select **Connected as a Media device** if you want to transfer files between your computer and the device.
4. Open **My Computer** on your computer to locate the removable drive, which represents the SD card installed in your device and the internal device storage.
5. Copy the desired files such as music or pictures from your device to the computer, or vice versa.

 **NOTE: The steps above are applicable to Microsoft Windows.**

Bluetooth


Bluetooth is a short-range wireless communications technology that lets your device connect to other Bluetooth devices such as headsets, computers, other mobile devices, and so on.

Turning on Bluetooth allows your device to detect nearby Bluetooth devices and automatically connect to devices that are already paired.

When Bluetooth is turned on, you can also set the following:

- Visible: Other Bluetooth devices can detect your device.
- Invisible: Other Bluetooth devices cannot detect your device. However, devices that are already paired can connect to your device.

Turning on Bluetooth and making the device discoverable

1. Tap  → **Settings** → **Bluetooth**.
2. Tap **ON** to turn on Bluetooth.
3. Tap **Visible to all nearby Bluetooth devices** to make the device discoverable by other nearby Bluetooth devices.

Pairing and connecting a Bluetooth device

1. Turn on Bluetooth.
2. In the **AVAILABLE DEVICES** list, tap the device that you want to connect to.

 **NOTE: To search for devices again, tap SEARCH FOR DEVICES.**

3. To initiate a connection with a device, tap the name of the device.
4. When the pairing is successful, the paired device can be automatically connected.
5. If more than two devices are paired, you have to tap one of the paired device so that it can be connected.

Ending a Bluetooth connection

On the Bluetooth connection page, tap the connected device to end the Bluetooth connection.

 **NOTE: If you are ending a Bluetooth connection from a headset or keypad, a pop-up window alerts you. Tap OK to continue to end the Bluetooth connection.**



Unpairing



On the Bluetooth connection page, tap  → **Unpair** to erase all pairing information with that device.

Gallery





To view and manage the pictures and videos stored on your device, tap  → **Gallery**. 

Sharing or deleting albums

All pictures and videos are grouped in separate albums according to their dates, sources, or folders in which they are stored. For example, pictures taken using the device are grouped as **Camera**, and downloaded pictures are grouped as **Download**.

1. Tap and hold an album until the options appear.
2. Tap and hold more albums if you want to do the same task for these albums.
 - To share the selected albums using **Bluetooth, Google+, Email, Picasa**, and so on, tap .
 - To delete the albums, tap .

Browsing pictures and videos

1. Tap an album to display the thumbnails of all pictures and videos in the folder.
2. To browse the pictures or videos, scroll through the thumbnails until the desired thumbnail is located.
3. To select a thumbnail, tap and hold it until the options appear.
4. Tap and hold more thumbnails as you need.
 - To share the selected pictures or videos using **Bluetooth, Google+, Email, or Picasa**, tap .
 - To delete the selected pictures or videos, tap  → **Delete**.
 - To set a picture as the wallpaper, tap the picture until the options appear and then select  → **Set picture as → Wallpaper**.
 - To set a picture as the contact photo, tap and hold the picture until the options appear and then select  → **Set picture as → Contact photo**.

Displaying a full picture

Tap a desired picture to display the picture in full screen.

- Slide left or right to view the previous or next picture.
- To open the picture viewing controls, tap anywhere on the picture.


Calendar

Use the calendar to schedule and manage your events, meetings, and appointments.

Opening the calendar

Tap  → **Calendar** to open the app.

Adding a new event

1. On the **Calendar** screen, tap  to open the new event details screen.
2. Type the event name, location, description and configure options such as time period, repetition, reminders and so on.
3. Tap **DONE** to save the event.


Clock

Use the clock to set alarms, countdown, stopwatch, and so on.

Opening the clock

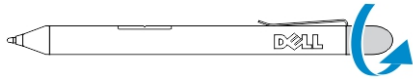
Tap  → **Clock**.

Setting an alarm

1. On the **Clock** main screen, tap to enter the alarm main screen.
2. On the alarms screen, tap  to add an alarm.
3. Select the time and tap **OK**.
4. And configure settings such as the alarm volume, snooze length, repeat and so on.

Getting Your Stylus Ready for Use

1. Twist the barrel in a counter clockwise direction.

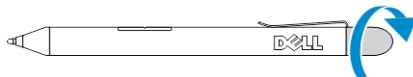


2. Insert an AAAA battery with the positive side facing the tip of the pen.



NOTE: Follow your local and regional statutes and regulations on disposal of battery waste.

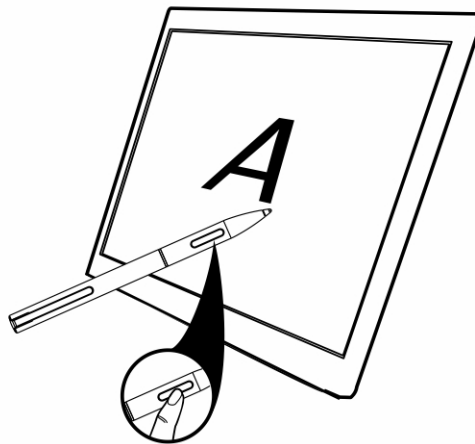
3. Re-assemble the barrel securely.



Using the Optional Stylus with Your Tablet

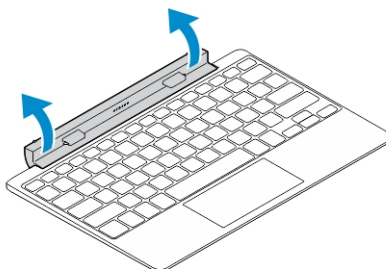
The Stylus is ergonomically designed to work with your tablet for long time periods. The user can seamlessly switch between pen and finger entry without any manual mode switching. The stylus supports features such as palm rejection, hovering, and pressure sensing, which allow for industry leading accuracy and ease of use with no calibration necessary. The two buttons are used for performing mouse clicks(left-click and right-click). You can use the tip of the stylus to draw shapes, select text, turn a page and write or sign the documents on your tablet.

You can also press the button on the side of the stylus to perform the left-click and right-click functions on your tablet.



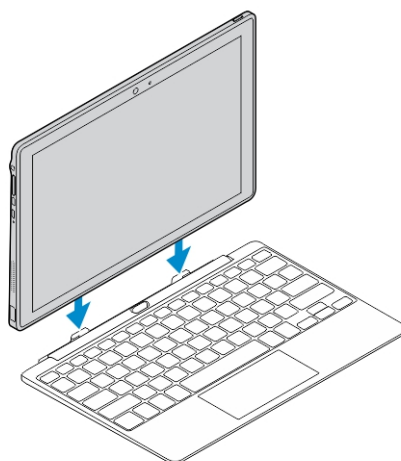
Docking Your Tablet to the Keyboard Dock

1. Rotate the keyboard dock to a 90-degree angle.



 **NOTE: The hinge position will be open, when you dock you tablet to the keyboard dock.**

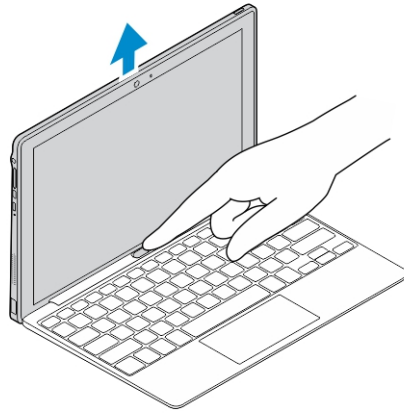
2. Dock the tablet to the keyboard dock.



 **NOTE: When the connection is made, you need to manually turn the on-screen keyboard off if it is displayed on the screen.**

Undocking Your Tablet from the Keyboard Dock

1. Push and hold the button on the Mobile Keyboard dock.
2. Lift the tablet from the Mobile Keyboard dock.



Troubleshooting

Security Problems

The SIM card's PIN code is blocked.

Possible causes

You have entered an incorrect PIN code three consecutive times.

Possible solutions

Contact your service provider to get the PUK code.

System Problems

Battery does not charge

The battery or battery charger is damaged.

A possible cause for this could be the use of incorrect power adapter. Use only the power adapter that shipped with your device.

The ambient temperature is below 0 °C or higher than 40 °C.

Adjust the battery charging environment to avoid extreme temperatures.

Poor contact between the battery and charger.

Check all connectors to ensure that all connections have been properly made.

The device does not power on.

The battery has no charge.

Charge the device.

Shortened standby time.

The duration of standby time is affected by your service provider's system configuration. The same device used with different service providers' systems does not have the same duration of standby time.

If you are located in an area where the network signal is weak, move your location to the area where the network signal is strong or temporarily turn off your device if needed.

If you are not able to connect to the network, the device continues to send out signals as it attempts to locate a base station. Doing this consumes battery charge and consequently shortens standby time.

Change your location to one where the network is accessible, or temporarily turn off your device or set it to airplane mode.

Messaging problem

Unable to send or receive text messages.

Your device is in airplane mode with no wireless connectivity.

Slide the status panel down and then disable airplane mode.

The network signal strength is not strong enough.

Try moving to a different location for better signal reception.

Unable to send or receive email.

The Internet connection or the email setting is not configured properly.

Check your network connection, and confirm with your email service provider if your email setting has been configured correctly.

Internet problems

Unable to connect to the mobile broadband networks.

Invalid SIM card.

Contact your service provider.

You are not within the network's service area.

Check the service area with your service provider.




Poor signal.

Move to an open space or if you are inside a building, move closer to a window.

Your device is in airplane mode with no wireless connectivity.

Slide the status panel down and then disable airplane mode.

Technical Specifications

 **NOTE:** Offerings may vary by region. The following specifications are only those required by law to ship with your computer. For more information about the configuration of your computer, go to [Help and Support](#) in your Windows operating system and select the option to view information about your computer.

System Information	
System Chipset	Intel Bay Trail-T CR Z3735F
DRAM bus width	1CH, DDR3L-RS on board
Flash EPROM	8 Mbit SPI
Processor	
Processor type	Intel Bay Trail-T CR Z3735F
External bus frequency	1333 MHz (DDR3L-RS)
Memory	
Memory capacity	2 GB
Memory type	DDR3L-RS for 2 GB
Memory speed	1333 MHz
Minimum memory	2 GB
Maximum memory	2 GB
Video	
Video type	Gen7 embedded in the Bay Trail-T CR SoC
Data bus	
Video controller	Gen7 Media decode Supports DX*11, OpenGL 3.0 (OGL 3.0), OpenCL 1.1 (OCL 1.1), OpenGLES 2.0 (OGLES 2.0) Full HW acceleration for decode of 1080p60/P30 (H.264, VP8, WMV9, VC1)
Communications	
Network adapter	LTE, HSPA+ , EGPRS, GPRS
Wireless	WLAN 11a/b/g/n , Bluetooth 4.0, NFC
Ports and Connectors	
Audio	one 3.5 mm jack
Video	one micro HDMI connector
USB	one USB 2.0 connector
Micro USB	one Micro USB connector



Ports and Connectors

Memory card reader	one microSD card reader
Docking port	one Dell 6-pin dock connector
Subscriber Identity Module (SIM) port	one Micro SIM slot

Display

Type	LED-LCD with MIPI interface, support WUXGA (1920x1200) and WXGA (1280x800)
Size	10.1 inches diagonal
Dimensions:	
Height	227.72 mm (8.97 inches)
Width	147.8 mm (5.82 inches)
Depth	2.45 mm (0.10 inch)
Active area (X/Y)	216.81 mm / 135.50 mm
Maximum resolution	1920 x 1200
Maximum brightness	400 nits
Refresh rate	60 Hz
Minimum viewing angles:	
Horizontal	80/80
Vertical	80/80
Pixel pitch	0.11292 mm X 0.11292 mm

Camera (Front)

Type	1.2 MP Lite-On Module 13P2SF130B with Aptina 1040 SOC Sensor
Resolution	1280 x 720 pixels

Camera (Back)

Type	5 MP LiteOn module 13P2BA520A with OV5693 Sensor
Resolution	3264 x 2448 pixels

Storage

Storage	eMMC 4.5.1 16/32 GB (HS200)
---------	-----------------------------

Battery

Type	Rechargeable Li-ion Battery (32Whr)
Dimensions	
Depth	224.2 mm (8.83 inches)
Height	4.45 mm (0.18 inch)
Width	78.5 mm (3.09 inches)
Weight	170.00 g (0.38 lb)

Battery

Voltage	3.7 VDC (nominal) and 4.35 VDC (maximum)
Temperature range	
Operating	Charge: 0 °C to 50 °C; 32 °F to 122 °F Discharge: 0 °C to 70 °C; 32 °F to 158 °F
Non-Operating	-20 °C to 60 °C; -4 °F to 140 °F
Coin-cell battery	3 V CR1220 lithium ion
Voltage	3 V
Capacity	35 mAh (23+/- 3 degree)
Weight	0.8 g
Temperature	-20 ~ +60 degree

AC Adapter

Type	
Input voltage	100 VAC to 240 VAC
Input current (maximum)	0.3 A
Input frequency	50 Hz to 60 Hz
Output power	10 W
Output current	5 Vdc / 2 A
Rated output voltage	5 Vdc
Temperature range:	
Operating	0 °C to 40 °C (32 °F to 104 °F)
Non-operating	-40 °C to 70 °C (-40 °F to 158 °F)

Physical

Height	9.9 mm (0.39 inches)
Width	262.6 mm (10.34 inches)
Depth	175.8 mm (6.92 inches)
Weight (minimum)	659 grams

Environmental


Temperature:	
Operating	0 °C to 40 °C
Storage	-40 °C to 65 °C
Relative humidity (maximum):	
Operating	Operating 10% to 90% (noncondensing)



Environmental

Storage	Storage 5% to 95% (noncondensing)
Altitude (maximum):	
Operating	-16 m to 3048 m (-50 ft to 10,000 ft)
Non-operating	-15.2 m to 10,668 m (-50 ft to 35,000 ft)
Airborne contaminant level	G1 as defined by ISA-71.04-1985

Contacting Dell

 **NOTE: If you do not have an active Internet connection, you can find contact information on your purchase invoice, packing slip, bill, or Dell product catalog.**

Dell provides several online and telephone-based support and service options. Availability varies by country and product, and some services may not be available in your area. To contact Dell for sales, technical support, or customer service issues:

1. Go to **dell.com/support**.
2. Select your support category.
3. Verify your country or region in the **Choose a Country/Region** drop-down list at the bottom of the page.
4. Select the appropriate service or support link based on your need.

