

Setting Up Your Dell PowerEdge Server Using Dell Lifecycle Controller

Notes, cautions, and warnings

 **NOTE:** A NOTE indicates important information that helps you make better use of your product.

 **CAUTION:** A CAUTION indicates either potential damage to hardware or loss of data and tells you how to avoid the problem.

 **WARNING:** A WARNING indicates a potential for property damage, personal injury, or death.

Contents

Chapter 1:	4
Setting Up Your Dell PowerEdge Server Using Dell Lifecycle Controller.....	4
Related Dell products.....	8

Topics:

- [Setting Up Your Dell PowerEdge Server Using Dell Lifecycle Controller](#)

Setting Up Your Dell PowerEdge Server Using Dell Lifecycle Controller

Dell Lifecycle Controller is an advanced embedded systems management technology that enables remote server management using integrated Dell Remote Access Controller (iDRAC). Using Lifecycle Controller, you can update the firmware using a local or Dell-based firmware repository. The OS Deployment wizard available in Lifecycle Controller enables you to deploy an operating system.

This document provides a quick overview of the steps to set up your PowerEdge server using Lifecycle Controller.

NOTE: Before you begin, ensure that you set up your server using the *Getting Started Guide* document that shipped with your server.

To set up your PowerEdge server using Lifecycle Controller:

1. Connect the video cable to the video port and the network cables to the iDRAC and LOM port.



Figure 1. Video port, iDRAC port, and Lights Out Management (LOM) port

2. Turn on or restart the server and press **F10** to start Lifecycle Controller.

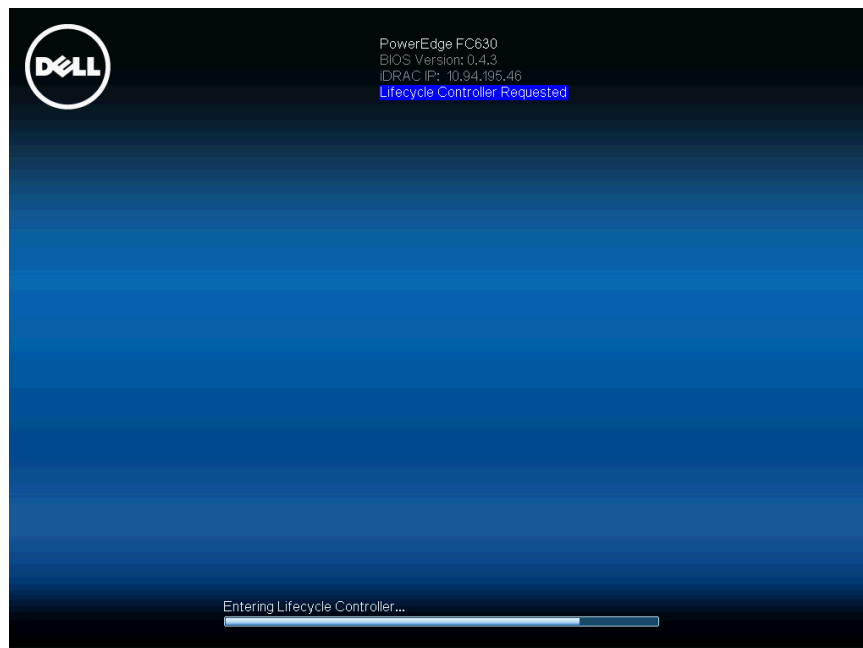


Figure 2. Starting Lifecycle Controller

NOTE: If you miss pressing **F10**, restart the server and press F10.

NOTE: The **Initial Setup Wizard** is displayed only when you start Lifecycle Controller for the first time.

3. Select the language and keyboard type and click **Next**.

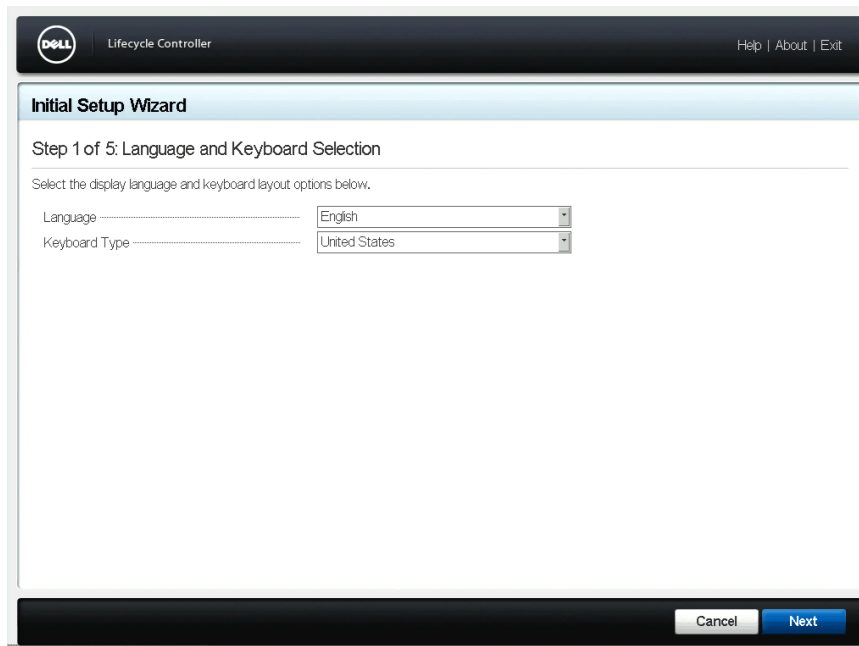


Figure 3. Language and Keyboard Selection page

4. Read the product overview and click **Next**.

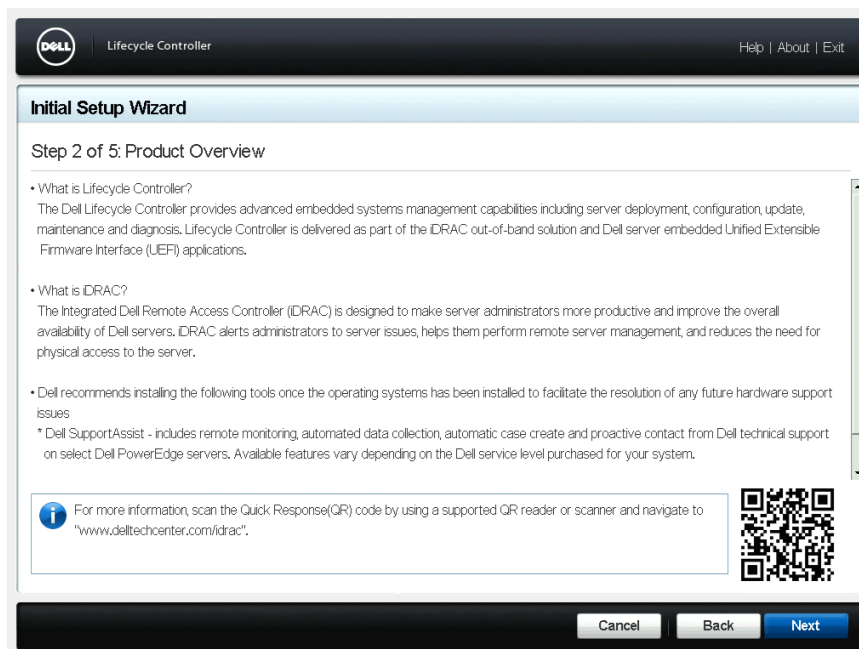


Figure 4. Product Overview page

5. Configure the network settings, wait for the settings to be applied, and click **Next**.

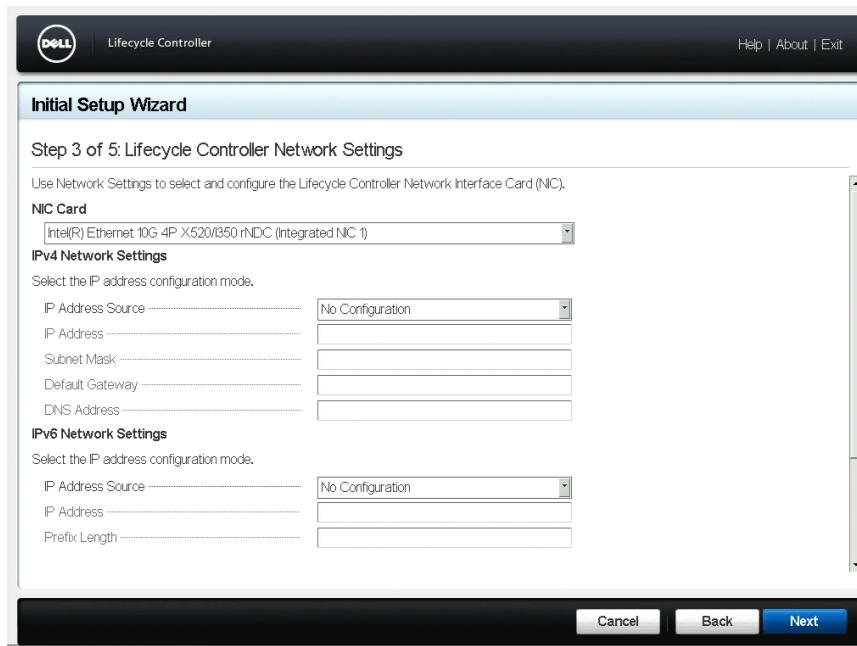


Figure 5. Lifecycle Controller Network Settings page

- Configure the iDRAC network settings, wait for the settings to be applied, and click **Next**.

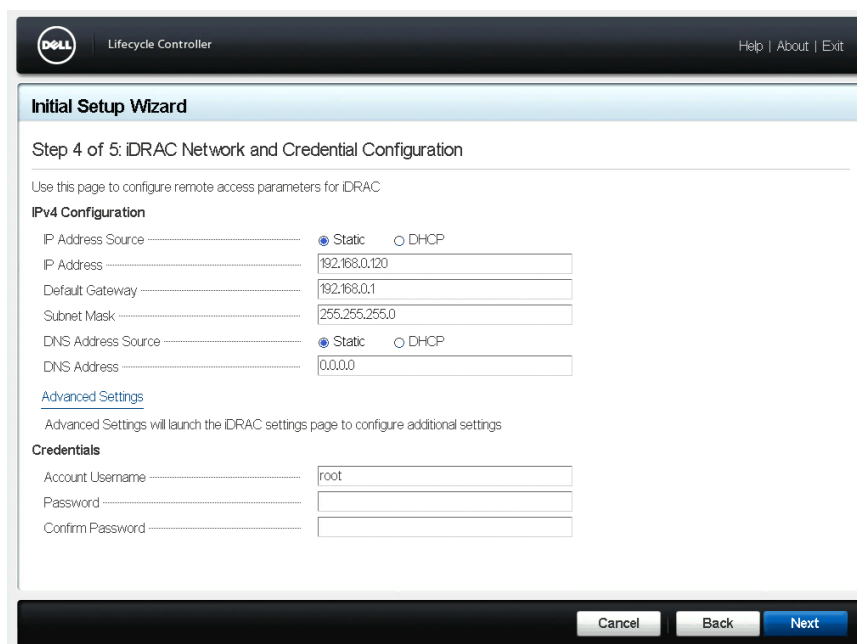


Figure 6. iDRAC Network and Credential Configuration page

- Verify the applied network settings and click **Finish** to exit the **Initial Setup Wizard**.

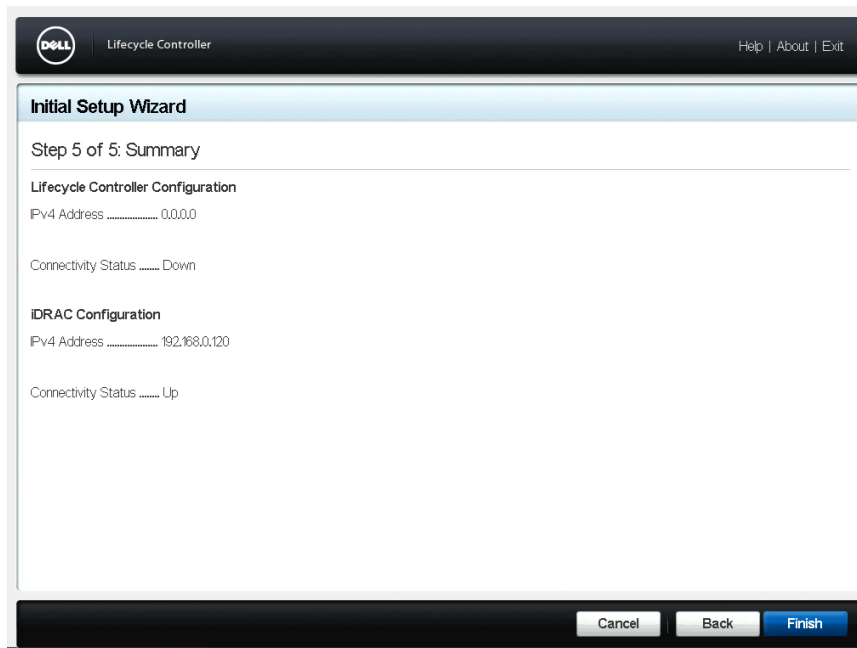


Figure 7. Summary page

NOTE: The **Initial Setup Wizard** is displayed only when you start Lifecycle Controller for the first time. If you want to make configuration changes later, restart the server, press **F10** to launch Lifecycle Controller, and select **Settings** or **System Setup** from the Lifecycle Controller home page.

8. Click **Firmware Update** > **Launch Firmware Update** and follow the instructions on the screen.

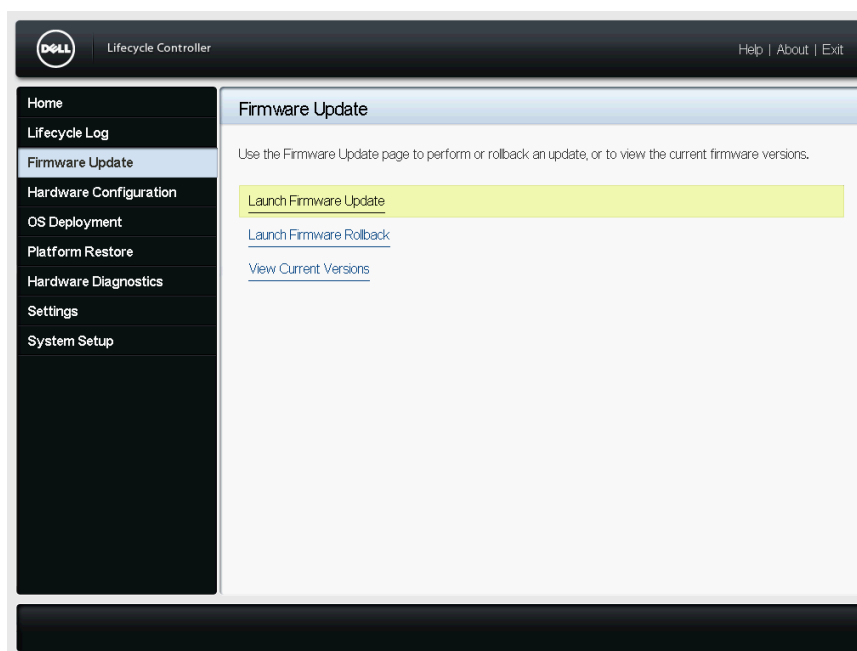


Figure 8. Firmware Update page

9. Click **OS Deployment** > **Deploy OS** and follow the instructions on the screen.

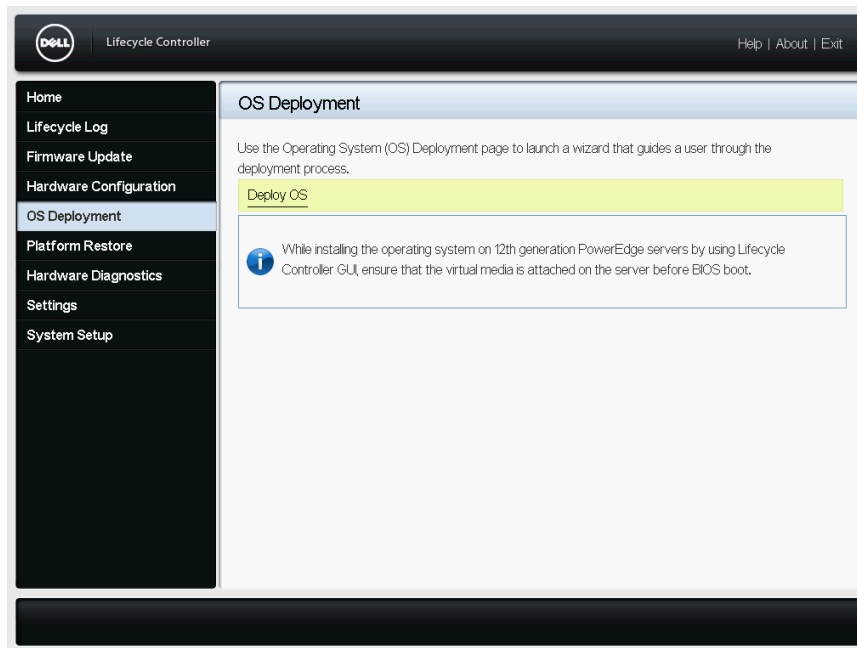


Figure 9. OS Deployment page

NOTE: For iDRAC with Lifecycle Controller videos, visit Delltechcenter.com/idrac.

NOTE: For iDRAC with Lifecycle Controller documentation, visit www.dell.com/idracmanuals.

Related Dell products

Integrated Dell Remote Access Controller With Lifecycle Controller

Integrated Dell Remote Access Controller (iDRAC) with Lifecycle Controller enhances your productivity and improves the overall availability of your Dell server. iDRAC alerts you about server problems, enables remote server management, and reduces the need to physically visit the server. Using iDRAC you can deploy, update, monitor, and manage servers from any location without the use of agents through a one-to-one or one-to-many management method.

For more details, visit Delltechcenter.com/idrac.

SupportAssist

Dell SupportAssist, an optional Dell Services offering, provides remote monitoring, automated data collection, automated case creation, and proactive contact from Dell Technical Support on select Dell PowerEdge servers. The available features vary depending on the Dell Service entitlement purchased for your server. SupportAssist enables faster problem resolution and reduces the time spent on the phone with Technical Support.

For more details, visit Dell.com/supportassist.

iDRAC Service Module

iDRAC Service Module is a software application that is recommended to be installed on the server's operating system. It complements iDRAC with additional monitoring information from the operating system and also provides quick access to the logs used by SupportAssist for troubleshooting and resolving hardware issues. Installing iDRAC Service Module further enhances the information provided to iDRAC and SupportAssist.

For more details, visit Delltechcenter.com/idrac.

OpenManage Server Administrator (OMSA)/OpenManage Storage Services (OMSS)

OMSA is a comprehensive one-to-one systems management solution for both local and remote servers, associated storage controllers, and Direct Attached Storage (DAS). Included in OMSA is OMSS, which enables configuration of the storage components attached to the server. These components include RAID and non-RAID controllers and the channels, ports, enclosures, and disks attached to the storage.

For more details, visit Delltechcenter.com/omsa.