






WYSE
| | | |

Dell Wyse 5012/5290 (D Class Cloud Clients, Model Dx0D)

Quick-Start Guide

Products: D00D (cloud desktop), D10D, D10DP, D50D, D90D7/7B/7p, D90D8/8B, D90DW (thin clients)

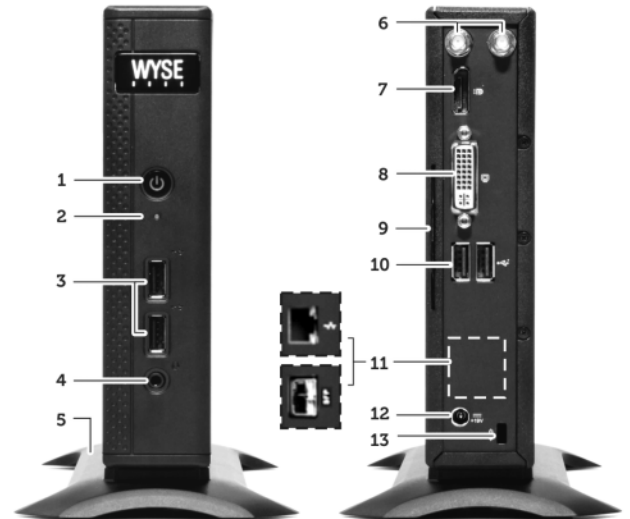
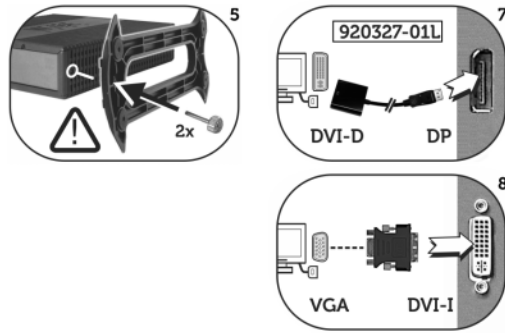
See accompanying documents in the shipping carton for License Agreement and Warranty information. To find the latest Quick-Start Guide, go to www.dell.com/wyse/manuals and click on the name of your product.

-  **NOTE:** A printed copy of the Wyse Technology End User License Agreement is included in the shipping box and provided for your reference only. The license at www.dell.com/wyse/licenses as of the purchase date is the controlling licensing agreement. By copying, using, or installing the software or the product, you agree to be bound by those terms.
-  **NOTE:** If you use Wyse Device Manager server software for managing this product, download the latest version to ensure compatibility at www.dell.com/wyse/downloads.
-  **CAUTION:** Improper connection, mounting, or use of this product could result in component failure or undesired interference. Read Safety Guidelines before setting up and operating this product.



08GPM4A00

D00D, D10D, D10DP, D50D, D90D7, D90D7B, D90D7p, D90D8, D90D8B, D90DW



Components

- 1 Power on/off button/light
- 2 Activity light
- 3 USB 2.0 port (2) ^[1]
- 4 Combination audio/microphone jack ^[2]
- 5 Vertical stand
- 6 Wireless antenna port (2) (optional) ^[3]
- 7 DisplayPort connector ^[4]
- 8 DVI-I port (1x DVI-D or 1x VGA) ^[4]
- 9 Product information tab
- 10 USB 2.0 port (2) ^[1]
- 11 Network port, 10/100/1000 Base-T (or) SFP/Mini-GBIC slot
- 12 +19V Power adapter input
- 13 Lock receptacle
- 14 PS/2-type mouse port located on keyboard



Components may vary based on model and location.

^[1] Not all USB devices are supported; check with Dell or your Dell representative to find out if a particular device is supported on your product.

^[2] **Warning:** Listening to audio at high volume levels for extended durations can damage your hearing.

^[3] Wireless option not available in all localities.

^[4] For details on supported monitor combinations, go to the Dell Knowledge Base at www.dell.com/wyse/knowledgebase and search for solution 22991.

Setting Up Your Cloud Client

Be sure you have read Safety Guidelines before setting up and operating this product. Refer to the figures and proceed as follows:

- 1 Make sure that the monitor and the cloud client are turned off and disconnected from AC power. Place the cloud client on a desk, or use a Dell-approved mounting accessory kit.
- 2 Make all desired connections (video display and keyboard with mouse are required). Connection to a 10/100/1000 Base-T Ethernet network is required unless an optional WiFi network adapter is used for wireless connection to a network. For connection to Fiber SFP, make sure the SFP module (ordered/shipped separately) is unlocked. Plug it into the SFP/Mini-GBIC slot, and then rotate the latch to lock the module in place. Additional connections of peripheral devices may be made to the other ports.
- 3 Connect the power adapter to the cloud client power input before connecting to a 100-240V AC, 50-60 Hz electrical outlet, and then press the power button to apply power. When the initialization sequence is complete, the amber activity light changes to green.

Safety Guidelines

Improper connection, mounting, or use of this product could result in component failure or undesired interference. Read the following guidelines before setting up and operating the device.

Setup


- Do not connect to AC power until all other connections (including the power adapter) are made. Connecting or disconnecting components or equipment on the back panel when the device is receiving AC power can cause power surges and damage the device.
- Do not force a connector into its socket. If any undue resistance is encountered, ensure that the connector is correctly oriented to the receptacle.
- For wireless usage and requirements, refer to the regulatory notices in the device's documentation.

Venting and Care

- Mount the device only as shown or in accordance with the instructions provided with Dell-approved mounting accessory kits. Improper orientation could restrict airflow of heat from the device and damage it.
- Allow sufficient space around the device for ventilation; do not place the device in any enclosure that restricts airflow around the device; do not place any objects on the device or block the vent outlets.
For environmental operating specifications, visit:
www.dell.com/wyse/D00D

Power Sources

- For regulatory compliance use only the power adapter that comes with your device or a Dell-approved equivalent. For proper replacement compare the labels on both device and power adapter to ensure that their voltages match.


 **WARNING: Use of any other power adapter may damage your device or the power adapter. The damage caused by an improper power adapter is not covered by warranty.**

- Accidental loss of power can damage device. Avoid connecting it to any power outlet which can be accidentally switched off. Do not hard reset the device by holding down the power button during normal operation.
- When turning off the device, be sure to perform a complete shutdown (via the user interface or a light press on the power button). Do not disconnect the AC power cord, DC power cord, or shut off power at a circuit breaker (including power strips), etc., to turn off the device.

- Surge protectors for electrical devices are recommended in areas of lightning. However, when lightning is occurring, your equipment should be properly shut down and unplugged from AC power until the storm has passed.
- Be very careful to not interrupt power while the device is downloading a software update.

Battery

The device contains an internal button cell battery replaceable by Dell or one of our Authorized Service Centers. For support, visit www.dell.com/support.

 **WARNING: There is a risk of explosion if the battery is replaced by an incorrect type. Always dispose of used batteries according to the instructions accompanying the battery.**

 **WARNING: Perchlorate Materials - Special Handling May Be Required under California Code of Regulations, title 22. (Only required within the USA.)**

Need more information?

Dell Reference Guides - User, Administrator, and related documentation is available at: www.dell.com/wyse/manuals

Dell-Approved Mounting Accessory Kits - Information about approved mounting accessory kit options is available at: www.dell.com/wyse/accessories

Dell Service and Support - Latest software images are available at: www.dell.com/wyse/downloads

Dell Device Manager - Information about Dell remote management software is available at: www.dell.com/wyse/WDM

Dell WSM - Information about Dell WSM software is available at: www.dell.com/wyse/WSM

Dell and the Environment - Information about Dell compliance with RoHS and with the Waste Electrical and Electronic Equipment (WEEE) is available at: www.dell.com/environment

Dell and Recycling - Information about recycling and reuse of Dell products is available at: www.dell.com/recycling

Dell Warranty - The standard warranty is three years from the date of purchase.

Copyright © 2014 Dell Inc. All rights reserved.

This product is protected by U.S. and international copyright and intellectual property laws. Dell and the Dell logo are trademarks of Dell Inc. in the United States and/or other jurisdictions. All other marks and names mentioned herein may be trademarks of their respective companies.
Sept 2014

Dell PN: 8GPM4 Rev: A00

