

Dell® BIOS and Boot Management Profile

Document Number: DCIM1040
Document Type: Specification
Document Status: Published
Document Language: E
Date: 2011-03-22

Version: 1.1.0



THIS PROFILE IS FOR INFORMATIONAL PURPOSES ONLY, AND MAY CONTAIN TYPOGRAPHICAL ERRORS AND TECHNICAL INACCURACIES. THE CONTENT IS PROVIDED AS IS, WITHOUT EXPRESS OR IMPLIED WARRANTIES OF ANY KIND. ABSENT A SEPARATE AGREEMENT BETWEEN YOU AND DELL™ WITH REGARD TO FEEDBACK TO DELL ON THIS PROFILE SPECIFICATION, YOU AGREE ANY FEEDBACK YOU PROVIDE TO DELL REGARDING THIS PROFILE SPECIFICATION WILL BE OWNED AND CAN BE FREELY USED BY DELL.

© 2010 Dell Inc. All rights reserved. Reproduction in any manner whatsoever without the express written permission of Dell, Inc. is strictly forbidden. For more information, contact Dell.

Dell and the *DELL* logo are trademarks of Dell Inc. *Microsoft* and *WinRM* are either trademarks or registered trademarks of Microsoft Corporation in the United States and/or other countries. Other trademarks and trade names may be used in this document to refer to either the entities claiming the marks and names or their products. Dell disclaims proprietary interest in the marks and names of others.

CONTENTS

| | | |
|---|---|----|
| 1 | Scope | 5 |
| 2 | Normative References..... | 5 |
| | 2.1 Approved References | 5 |
| | 2.2 Other References..... | 5 |
| 3 | Terms and Definitions | 5 |
| 4 | Symbols and Abbreviated Terms | 7 |
| 5 | Synopsis | 7 |
| 6 | Description | 8 |
| 7 | Implementation Requirements | 11 |
| | 7.1 BIOS Management | 11 |
| | 7.2 Boot Management..... | 23 |
| | 7.3 Service for Method Invocations | 27 |
| | 7.4 Profile Registration..... | 29 |
| 8 | Methods..... | 31 |
| | 8.1 CIM_BIOSService.SetAttribute()..... | 31 |
| | 8.2 DCIM_BIOSService.SetAttributes() | 32 |
| | 8.3 DCIM_BIOSService.CreateTargetedConfigJob() | 32 |
| | 8.4 DCIM_BIOSService.DeletePendingConfiguration()..... | 34 |
| | 8.5 DCIM_BIOSService.ChangePassword()..... | 34 |
| | 8.6 DCIM_BootConfigSetting.ChangeBootSourceState()..... | 35 |
| | 8.7 DCIM_BootConfigSetting.ChangeBootOrderByInstanceID()..... | 36 |
| 9 | Use Cases | 36 |
| | 9.1 Discovery of BIOS and Boot profile support | 37 |
| | 9.2 Inventory of BIOS attributes in system | 37 |
| | 9.3 Get the first BIOS attribute's information | 38 |
| | 9.4 Setting BIOS attributes | 38 |
| | 9.5 Apply pending values..... | 38 |
| | 9.6 Delete pending values | 39 |
| | 9.7 Inventory of boot configurations in system | 39 |
| | 9.8 Get the first boot configuration's information | 39 |
| | 9.9 Inventory of boot sources in system | 39 |
| | 9.10 Changing boot order by instance..... | 39 |
| | 9.11 Enable or disable boot source | 40 |
| | 9.12 One time boot | 40 |
| | ANNEX A (informative) Related MOF Files | 42 |

Figures

| | |
|---|----|
| Figure 1 – BIOS and Boot Management Profile: Class Diagram – BIOS Management..... | 9 |
| Figure 2 – BIOS and Boot Management Profile: Boot Management..... | 10 |

Tables

| | |
|--|----|
| Table 1 – Related Profiles..... | 8 |
| Table 2 – CIM Elements: BIOS and Boot Management Profile..... | 11 |
| Table 3 – DCIM_BIOSEnumeration - Operations..... | 12 |
| Table 4 – Class: DCIM_BIOSEnumeration..... | 13 |
| Table 5 – DCIM_BIOSEnumeration Attributes..... | 13 |
| Table 6 – DCIM_BIOSString - Operations..... | 19 |
| Table 7 – Class: DCIM_BIOSString..... | 20 |
| Table 8 – DCIM_BIOSString Attributes..... | 20 |
| Table 9 – DCIM_BIOSInteger - Operations..... | 21 |
| Table 10 – Class: DCIM_BIOSInteger..... | 21 |
| Table 11 – DCIM_BIOSInteger Attributes..... | 22 |
| Table 12 – Boot Lists..... | 23 |
| Table 13 – DCIM_BootConfigSetting – Operations..... | 24 |
| Table 14 – Class: DCIM_BootConfigSetting..... | 25 |
| Table 15 – DCIM_BootSourceSetting – Operations..... | 25 |
| Table 16 – Class: DCIM_BootSourceSetting..... | 27 |
| Table 17 – DCIM_BIOSService – Operations..... | 28 |
| Table 18 – Class: DCIM_BIOSService..... | 29 |
| Table 19 – DCIM_LCRegisteredProfile - Operations..... | 29 |
| Table 20 – Class: CIM_RegisteredProfile..... | 30 |
| Table 21 – SetAttribute() Method: Return Code Values..... | 31 |
| Table 22 – SetAttribute() Method: Parameters..... | 31 |
| Table 23 – SetAttributes() Method: Return Code Values..... | 32 |
| Table 24 – SetAttributes() Method: Parameters..... | 32 |
| Table 25 – CreateTargetedConfigJob() Method: Return Code Values..... | 33 |
| Table 26 – CreateTargetedConfigJob() Method: Parameters..... | 33 |
| Table 27 – DeletePendingConfiguration() Method: Return Code Values..... | 34 |
| Table 28 – DeletePendingConfiguration() Method: Parameters..... | 34 |
| Table 33 – ChangePassword() Method: Return Code Values..... | 34 |
| Table 34 – ChangePassword() Method: Parameters..... | 34 |
| Table 29 – ChangeBootSourceState() Method: Return Code Values..... | 35 |
| Table 30 – ChangeBootSourceState() Method: Parameters..... | 35 |
| Table 31 – ChangeBootOrderByInstanceID() Method: Return Code Values..... | 36 |
| Table 32 – ChangeBootOrderByInstanceID() Method: Parameters..... | 36 |

BIOS and Boot Management Profile

1 Scope

The BIOS and Boot Management Profile extends the management capabilities of referencing profiles by adding the capability to represent the configuration of the system BIOS setup and to manage the boot of the system. The system BIOS setup is modeled with multiple attributes that allow configuration of the BIOS.

2 Normative References

The following referenced documents are indispensable for the application of this document. For dated references, only the edition cited applies. For undated references, the latest edition of the referenced document (including any amendments) applies.

2.1 Approved References

DMTF DSP1033, *Profile Registration Profile 1.0.0*

DMTF DSP1061, *Management Profile 1.0.0*

DMTF DSP0200, *CIM Operations over HTTP 1.2.0*

DMTF DSP0004, *CIM Infrastructure Specification 2.3.0*

DMTF DSP1000, *Management Profile Specification Template*

DMTF DSP1001, *Management Profile Specification Usage Guide*

DMTF DSP0226, *Web Services for Management (WS-Management) Specification 1.1.0*

DMTF DSP0227, *WS-Management CIM Binding Specification 1.0.0*

2.2 Other References

ISO/IEC Directives, Part 2, *Rules for the structure and drafting of International Standards*, <http://isotc.iso.org/livelink/livelink.exe?func=ll&objId=4230456&objAction=browse&sort=subtype>

Unified Modeling Language (UML) from the Open Management Group (OMG), <http://www.uml.org>

BIOS Boot Specification v1.01 (January 11, 1996), <http://www.phoenix.com/NR/rdonlyres/56E38DE2-3E6F-4743-835F-B4A53726ABED/0/specsbbs101.pdf>

3 Terms and Definitions

For the purposes of this document, the following terms and definitions apply.

29 **3.1**
30 **can**
31 used for statements of possibility and capability, whether material, physical, or causal

32 **3.2**
33 **cannot**
34 used for statements of possibility and capability, whether material, physical, or causal

35 **3.3**
36 **conditional**
37 indicates requirements to be followed strictly in order to conform to the document when the specified
38 conditions are met

39 **3.4**
40 **mandatory**
41 indicates requirements to be followed strictly in order to conform to the document and from which no
42 deviation is permitted

43 **3.5**
44 **may**
45 indicates a course of action permissible within the limits of the document

46 **3.6**
47 **need not**
48 indicates a course of action permissible within the limits of the document

49 **3.7**
50 **optional**
51 indicates a course of action permissible within the limits of the document

52 **3.8**
53 **referencing profile**
54 indicates a profile that owns the definition of this class and can include a reference to this profile in its
55 “Related Profiles” table

56 **3.9**
57 **shall**
58 indicates requirements to be followed strictly in order to conform to the document and from which no
59 deviation is permitted

60 **3.10**
61 **shall not**
62 indicates requirements to be followed strictly in order to conform to the document and from which no
63 deviation is permitted

64 **3.11**
65 **should**
66 indicates that among several possibilities, one is recommended as particularly suitable, without
67 mentioning or excluding others, or that a certain course of action is preferred but not necessarily required

68 **3.12**
69 **should not**
70 indicates that a certain possibility or course of action is deprecated but not prohibited

71 **3.13**
72 `ENUMERATE`
73 Refers to WS-MAN `ENUMERATE` operation as described in Section 8.2 of DSP0226_V1.1 and Section
74 9.1 of DSP0227_V1.0

75 **3.14**
76 `GET`
77 Refers to WS-MAN `GET` operation as defined in Section 7.3 of DSP00226_V1.1 and Section 7.1 of
78 DSP0227_V1.0

79

80 **4 Symbols and Abbreviated Terms**

81 **4.1**
82 **CIM**
83 Common Information Model

84 **4.2**
85 **iDRAC**
86 integrated Dell Remote Access Controller – management controller for blades and monolithic servers

87 **4.3**
88 **CMC**
89 Chassis Manager Controller – management controller for the modular chassis

90 **4.4**
91 **iSCSI**
92 Internet Small Computer System Interface, an Internet Protocol (IP)-based storage networking standard
93 for linking data storage facilities.

94 **4.5**
95 **WBEM**
96 Web-Based Enterprise Management

97

98 **5 Synopsis**

99 **Profile Name:** BIOS and Boot Management

100 **Version:** 1.0.0

101 **Organization:** Dell Inc.

102 **CIM Schema Version:** 2.19.1

103 **Central Class:** `DCIM_BIOSService`

104 **Scoping Class:** `CIM_ComputerSystem`

105 The BIOS and Boot Management Profile extends the management capability of the referencing profiles
106 by adding the capability to describe BIOS attributes, each BIOS configuration item is represented by an
107 instance one of these classes `DCIM_BIOSEnumeration`, `DCIMBIOSString`, `DCIM_BIOSInteger` and boot
108 management where each boot list is represented by `DCIM_BootConfigSetting` and each boot source
109 device by `DCIM_BootSourceSetting`. `DCIM_BIOSService` shall be the Central Class.

110 CIM_ComputerSystem shall be the Scoping Class. The instance of DCIM_BIOSService shall be the
111 Central Instance. The instance of CIM_ComputerSystem with which the Central Instance is associated
112 through the CIM_HostedService association shall be the Scoping Instance.

113 Table 1 identifies profiles that are related to this profile.

114 **Table 1 – Related Profiles**

| Profile Name | Organization | Version | Relationship |
|------------------------------|--------------|---------|--------------|
| Profile Registration Profile | DMTF | 1.0 | Mandatory |

115 **6 Description**

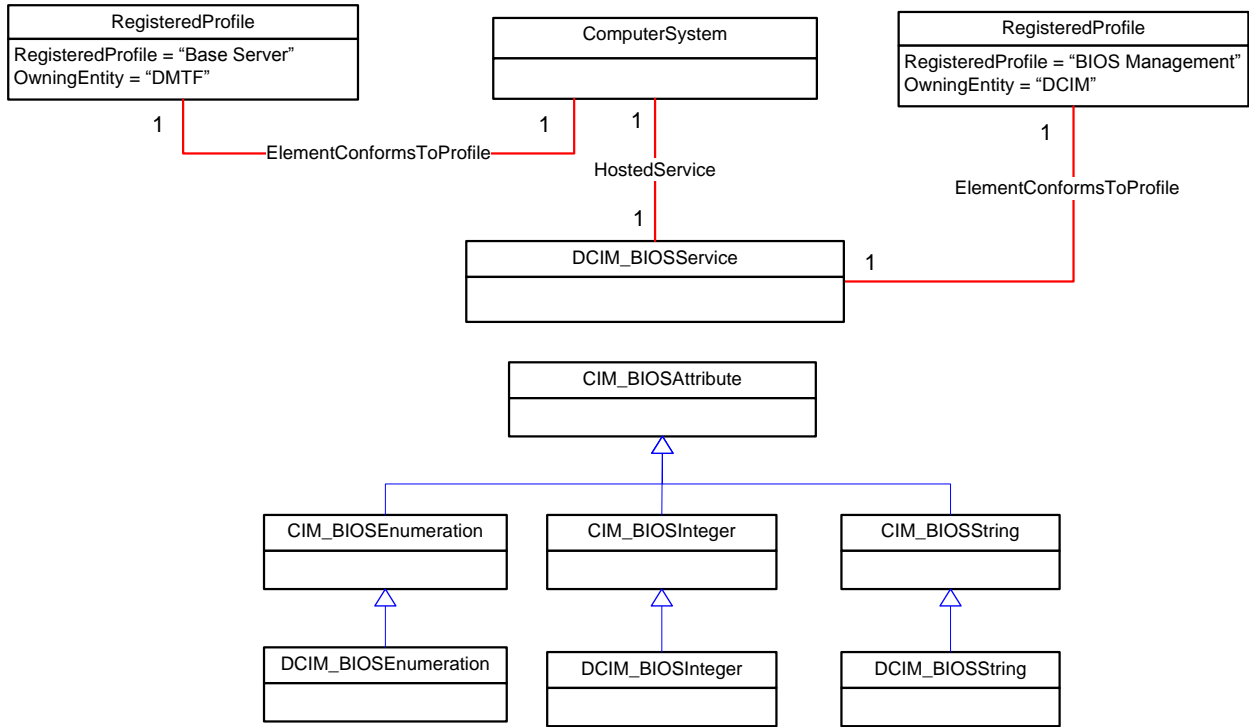
116 The BIOS and Boot Management Profile describes BIOS setup configuration including boot management.
117 The profile also describes the relationship of the BIOS classes to the DMTF/Dell profile version
118 information.

119 Figure 1 represents the class schema for the BIOS attribute management feature of BIOS and Boot
120 Management Profile. For simplicity, the prefix CIM_ has been removed from the names of the classes.

121 Each BIOS's configurable attribute is represented by one of the classes (DCIM_BIOSEnumeration,
122 DCIM_BIOSString, DCIM_BIOSInteger)CIM_BIOSAttribute. Depending on the datatype of the attribute the
123 BIOS configuration attribute is either instantiated as DCIM_BIOSEnumeration, DCIM_BIOSString, or
124 DCIM_BIOSInteger instance.

125 The DCIM_BIOSService class is used to configure the BIOS attributes. The SetAttribute() and
126 SetAttributes() methods on the DCIM_BIOSService class configure BIOS attributes, DCIM_BIOSAttribute
127 subclass instances.

128 The BIOS and Boot Management Profile information is represented with the instance of
129 CIM_RegisteredProfile.



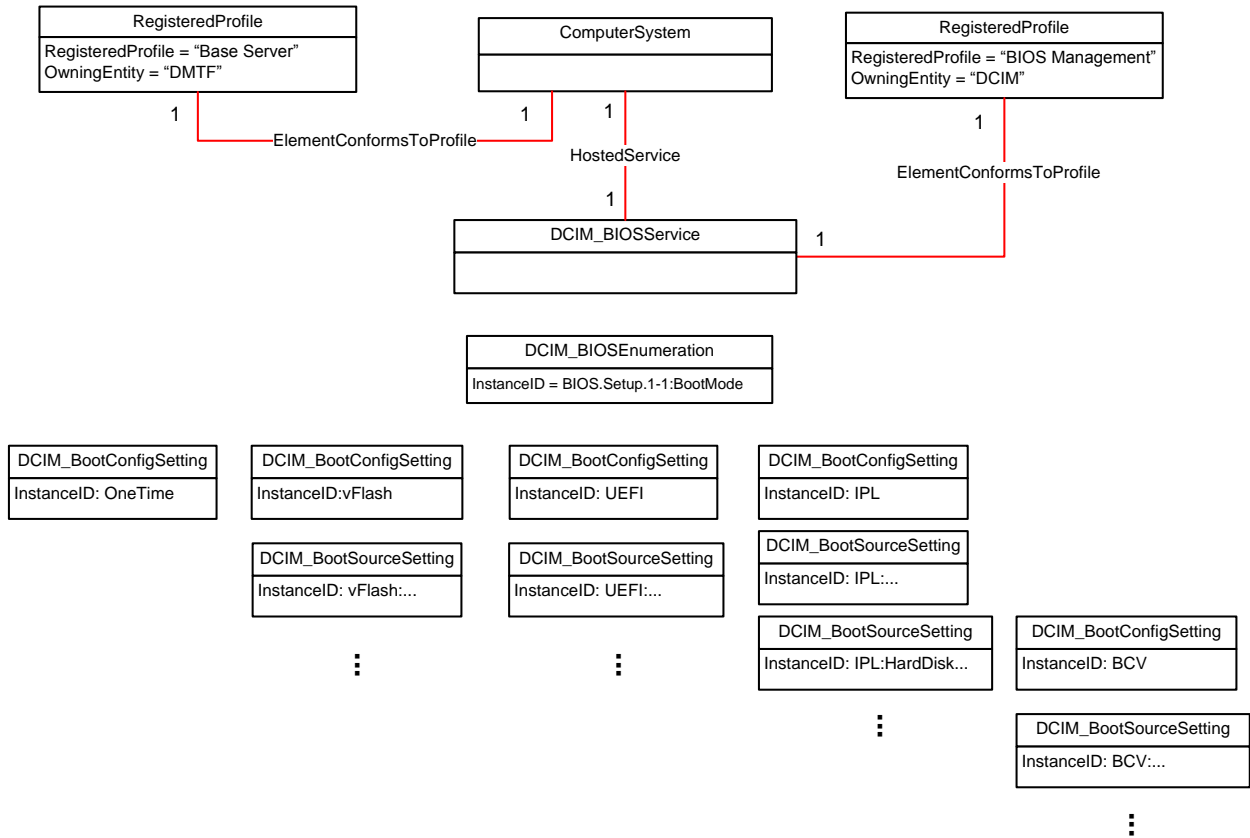
130

131

Figure 1 – BIOS and Boot Management Profile: Class Diagram – BIOS Management

132 Figure 2 represents the class schema for the the boot management feature of the BIOS and Boot
 133 Management Profile. For simplicity, the prefix CIM_ has been removed from the names of the classes.

134 Each boot list is represented by a DCIM_BootConfigSetting instance. Each of the boot lists contains the
 135 boot devices/sources represented by DCIM_BootSourceSetting, shown underneath their corresponding
 136 boot lists in the figure below. Note that the InstanceID property value prefix of the
 137 DCIM_BootSourceSetting instance matches the InstanceID of the DCIM_BootConfigSetting. Also note
 138 that IPL boot list contains a BCV boot list.



139

140 **Figure 2 – BIOS and Boot Management Profile: Boot Management**

141

142 **7 Implementation Requirements**

143 Requirements and guidelines for propagating and formulating certain properties of the classes are
 144 discussed in this section. Methods are listed in section 8. Table 2 shows the instances of CIM Elements
 145 for this profile. Instances of the CIM Elements shall be implemented as described in Table 2. Sections 7
 146 (“Implementation Requirements” and “Methods”) may impose additional requirements on these elements.

147 **Table 2 – CIM Elements: BIOS and Boot Management Profile**

| Element Name | Requirement | Description |
|---------------------------------|-------------|--|
| Classes | | |
| DCIM_BIOSService | Mandatory | The class shall be implemented in the Implementation Namespace. See sections 7.3.1 |
| DCIM_BIOSEnumeration | Mandatory | The class shall be implemented in the Implementation Namespace. See section 7.1.1 |
| DCIM_BIOSInteger | Mandatory | The class shall be implemented in the Implementation Namespace. See section 7.1.3 |
| DCIM_BIOSString | Mandatory | The class shall be implemented in the Implementation Namespace. See section 7.1.2 |
| DCIM_BootConfigSetting | Mandatory | The class shall be implemented in the Implementation Namespace. See section Error! Reference source not found. |
| DCIM_BootSourceSetting | Mandatory | The class shall be implemented in the Implementation Namespace. See section Error! Reference source not found. |
| DCIM_LCElementConformsToProfile | Mandatory | The class shall be implemented in the Implementation Namespace. |
| DCIM_LCElementConformsToProfile | Mandatory | The class shall be implemented in the Interop Namespace. |
| DCIM_LCRegisteredProfile | Mandatory | The class shall be implemented in the Interop Namespace. See section 7.4.1 |
| Indications | | |
| None defined in this profile | | |

148

149 **7.1 BIOS Management**

150 **7.1.1 DCIM_BIOSEnumeration**

151 This section describes the implementation for the DCIM_BIOSEnumeration class that represents an
 152 enumeration type BIOS attribute..

153 This class shall be instantiated in the Implementation Namespace.

154 **7.1.1.1 WBEM URIs for WinRM®**

155 The class WBEM URI shall be “http://schemas.dell.com/wbem/wscim/1/cim-
156 schema/2/DCIM_BIOSEnumeration?__cimnamespace=<Implementation Namespace>”

157 The key property shall be the InstanceID.

158 The instance WBEM URI for DCIM_BIOSEnumeration instance shall be:
159 “http://schemas.dell.com/wbem/wscim/1/cim-
160 schema/2/DCIM_BIOSEnumeration?__cimnamespace=<Implementation Namespace>+InstanceID=
161 BIOS.Setup.1-1:<AttributeName>”

162 **7.1.1.2 Operations**

163 The following table details the implemented operations on DCIM_BIOSEnumeration.

164 **Table 3 – DCIM_BIOSEnumeration - Operations**

| Operation Name | Requirements | Required Input |
|----------------------------------|--------------|-----------------|
| Get | Mandatory | Instance URI |
| Enumerate | Mandatory | Class URI |
| DCIM_BIOSService.SetAttribute() | Mandatory | See section 8.1 |
| DCIM_BIOSService.SetAttributes() | Mandatory | See section 8.2 |

165

166 **7.1.1.3 Properties**

167 The following table details the implemented properties for DCIM_BIOSEnumeration instance representing
168 a BIOS controller enumeration attribute. The “Requirements” column shall denote the implementation
169 requirement for the corresponding property. If the column “Property Name” matches the property name,
170 the property either shall have the value denoted in the corresponding column “Additional Requirement”, or
171 shall be implemented according to the requirements in the corresponding column “Additional
172 Requirement”.

Table 4 – Class: DCIM_BIOSEnumeration

| Properties | Notes | Additional Requirements |
|----------------|-----------|--|
| InstanceID | Mandatory | The property value shall be formed as follows: "BIOS.Setup.1-1:<AttributeName property value>". |
| AttributeName | Mandatory | The property value shall be from the "AttributeName" column in Table 5 |
| CurrentValue | Mandatory | The property value shall be one of the values in the "PossibleValues" column at the corresponding row in Table 5. |
| PendingValue | Mandatory | The property value shall be one of the values in the "PossibleValues" column at the corresponding row in Table 5. |
| IsReadOnly | Mandatory | The property value shall be the value in the "IsReadOnly" column at the corresponding row in Table 5. |
| FQDD | Mandatory | The property shall be set to "BIOS.Setup.1-1". |
| PossibleValues | Mandatory | The property value shall be equal to the array of the values in "PossibleValues" column at the corresponding row in Table 5. |

175 The following table describes the requirements for the AttributeName, and PossibleValues properties.
 176 The PossibleValues is an array property represented in the table as comma delimited list.

177 NOTE: The BIOS attributes listed below may not be present on all Dell systems. The presence of a particular
 178 attribute depends on the model of a Dell system, the features available in the system and the BIOS version of the
 179 system.

Table 5 – DCIM_BIOSEnumeration Attributes

| AttributeName | Attribute Description | IsReadOnly | PossibleValues |
|----------------|---|--------------------------------|---|
| MemTest | When set to enabled, the memory tests are performed | FALSE | Enabled, Disabled |
| RedundantMem | | Feature Dependant ¹ | Disabled, Spare, Mirror, IntraNodeMirror, DimmSpare |
| MemOpMode | Memory operating mode | Feature Dependant ¹ | OptimizerMode, AdvEccMode, SpareMode, MirrorMode |
| MemOptimizer | Memory Optimizer Technology | Feature Dependant ¹ | Enabled, Disabled |
| SnoopFilter | Snoop Filter | FALSE | Enabled, Disabled |
| NodeInterleave | If the system is configured with matching memory, this field enables node interleaving. If set to Disabled (the default), the system supports Non-Uniform Memory architecture (NUMA) (asymmetric) memory configurations. This field is active only if the memory configuration can support node interleaving. | Feature Dependant ¹ | Enabled, Disabled |

| | | | |
|------------------------|--|--|---|
| MemVolt | System Memory Voltage | FALSE | AutoVolt, Volt15V, Volt13V |
| MemLowPower | Memory Low Power Mode | FALSE | Enabled, Disabled |
| LogicalProc | Each processor core supports up to two logical processors. When this field is set to Enabled (the default), the BIOS reports all logical processors. When set to Disabled, the BIOS only reports one logical processor per core. NOTE: This attribute does not affect the DCIM_CPUView.NumberOfEnabledThreads property because the latter represents the total number of hardware (not BIOS) enabled threads. | FALSE | Enabled, Disabled |
| ProcVirtualization | Virtualization Technology, When enabled, the additional hardware capabilities provided by Virtualization Technology are available for use | FALSE | Enabled, Disabled |
| DmaVirtualization | I/O Virtualization Technology | Attribute Value Dependant ² | Enabled, Disabled |
| ProcAdjCacheLine | Adjacent Cache Line Prefetch, if Enabled, the system is optimized for applications that require high utilization of sequential memory access. | FALSE | Enabled, Disabled |
| ProcHwPrefetcher | Hardware Prefetcher, this field enables or disables the hardware prefetcher | FALSE | Enabled, Disabled |
| DcuStreamerPrefetcher | DCU Streamer Prefetcher | FALSE | Enabled, Disabled |
| DataReuse | Data Reuse | FALSE | Enabled, Disabled |
| QpiBandwidthPriority | Intel(R) QPI Bandwidth Priority | FALSE | Compute, InputOutput |
| ProcExecuteDisable | This field specifies whether Execute Disable Memory Protection Technology is enabled | FALSE | Enabled, Disabled |
| ProcCores | Number of Cores per Processor | FALSE | All, Single, Dual, Quad, 1, 2, 4, 6, 8, 10, 12 NOTE: For quad port processors, setting attribute ProcCores value to 4 sets the current value to "All". |
| ProcHyperTransport | HyperTransport Technology | FALSE | HT3, HT1 |
| ProcHtAssist | HT Assist | FALSE | Enabled, Disabled |
| ProcDramPrefetcher | DRAM Prefetcher | FALSE | Enabled, Disabled |
| ProcSoftwarePrefetcher | Hardware Prefetch | FALSE | Enabled, Disabled |

| | | | |
|----------------|---|-------|-------------------|
| | Training on Software Prefetch | | |
| ProcTurboMode | When set to Enabled, the processor can operate in Turbo Mode | FALSE | Enabled, Disabled |
| ProcC1E | C1E | FALSE | Enabled, Disabled |
| ProcCStates | When set to Enabled, the processor can operate in all available Power States | FALSE | Enabled, Disabled |
| EmbSata | Allows the Embedded SATA to be set to Off or ATA Mode | FALSE | AtaMode, Off |
| SataPortA | Select Auto to enable BIOS support for the device | FALSE | Off, Auto |
| SataPortB | Select Auto to enable BIOS support for the device | FALSE | Off, Auto |
| SataPortC | Select Auto to enable BIOS support for the device | FALSE | Off, Auto |
| SataPortD | Select Auto to enable BIOS support for the device | FALSE | Off, Auto |
| SataPortE | Select Auto to enable BIOS support for the device | FALSE | Off, Auto |
| SataPortF | Select Auto to enable BIOS support for the device | FALSE | Off, Auto |
| SataPortG | Select Auto to enable BIOS support for the device | FALSE | Off, Auto |
| SataPortH | Select Auto to enable BIOS support for the device | FALSE | Off, Auto |
| BootMode | This field determines the boot mode of the system. Selecting 'UEFI' enables booting to Unified Extensible Firmware Interface (UEFI) capable operating systems. Selecting 'BIOS' (the default) ensures compatibility with operating systems that do not support UEFI | FALSE | Bios, Uefi |
| BootSeqRetry | Boot Sequence Retry, when set to Enabled, the system will re-attempt the Boot Sequence after a 30-second timeout if the last boot attempt has failed. | FALSE | Enabled, Disabled |
| IntegratedSas | Integrated SAS Controller | FALSE | Enabled, Disabled |
| IntegratedRaid | Integrated RAID Controller | FALSE | Enabled, Disabled |

| | | | |
|--------------------------|---|--|---|
| UsbPorts | User Accessible USB Ports | FALSE | AllOn, OnlyBackPortsOn, AllOff |
| InternalUsb | Internal USB Port | FALSE | On, Off |
| InternalUsb1 | Internal USB Port | FALSE | On, Off |
| InternalUsb2 | Internal USB Port | FALSE | On, Off |
| InternalSdCard | Internal SD Card Port | Feature Dependant ¹ | On, Off |
| InternalSdCardRedundancy | Internal SD Card Redundancy | Attribute Value Dependant ³ | Mirror, Disabled |
| EmbNic1Nic2 | Embedded NIC1 and NIC2 | FALSE | Enabled, DisabledOs |
| EmbNic1 | Embedded Gb NIC1 | FALSE | Enabled, EnabledPxe, EnablediScsi, Disabled |
| EmbNic2 | Embedded Gb NIC2 | FALSE | Enabled, EnabledPxe, EnablediScsi, Disabled |
| EmbNic3Nic4 | Embedded NIC3 and NIC4 | FALSE | Enabled, DisabledOs |
| EmbNic3 | Embedded Gb NIC3 | FALSE | Enabled, EnabledPxe, EnablediScsi, Disabled |
| EmbNic4 | Embedded Gb NIC4 | FALSE | Enabled, EnabledPxe, EnablediScsi, Disabled |
| OsWatchdogTimer | OS Watchdog Timer, if your system stops responding, this watchdog timer aids in the recovery of your operating system. When this field is set to Enabled, the operating system is allowed to initialize the timer. When it is set to Disabled (the default), the timer will have no effect on the system. | FALSE | Enabled, Disabled |
| IoatEngine | I/OAT DMA Engine, this field enables/disables the I/O Acceleration Technology (I/OAT) option | FALSE | Enabled, Disabled |
| EmbVideo | Embedded Video Controller | Feature Dependant ¹ | Enabled, Disabled |
| SriovGlobalEnable | SR-IOV Global Enable, this field enables or disables BIOS configuration of Single Root I/O Virtualization (SR-IOV) devices. This feature is disabled by default. Enable if booting to a Virtualization O/S that recognizes SR-IOV devices | FALSE | Enabled, Disabled |
| SerialComm | Serial Communication | FALSE | OnNoConRedir, OnConRedirCom1, OnConRedirCom2, Off |
| SerialPortAddress | Serial Port Address | FALSE | Serial1Com1Serial2Com2, Serial1Com2Serial2Com1 |
| ExtSerialConnector | External Serial Connector | FALSE | Serial1, Serial2, RemoteAccDevice |

| | | | |
|----------------|---|--|---|
| FailSafeBaud | Failsafe Baud Rate | FALSE | 115200, 57600, 19200, 9600 |
| ConTermType | Remote Terminal Type | FALSE | Vt100Vt220, Ansi |
| RedirAfterBoot | Redirection After Boot | FALSE | Enabled, Disabled |
| FrontLcd | Front-Panel LCD Options | FALSE | None, UserDefined, ModelNum, Advanced |
| PowerMgmt | Power Management | FALSE | OsCtrl, ActivePwrCtrl, Custom, MaxPerf |
| ProcPwrPerf | CPU Power and Performance Management | Attribute Value Dependant ^{4,5} | SysDbpm, MaxPerf, MinPwr, OsDbpm |
| FanPwrPerf | Fan Power and Performance Management | Attribute Value Dependant ^{4,6} | MinPwr, MaxPerf |
| MemPwrPerf | Memory Power and Performance Management | Attribute Value Dependant ^{4,7} | MaxPerf, 1333MHz, 1067MHz, 978MHz, 800MHz, MinPwr |
| PasswordStatus | Password Status | FALSE | Unlocked, Locked |
| TpmSecurity | TPM Security, this field controls the reporting of the Trusted Platform Module (TPM) in the system. When set to Off (default), presence of the TPM is not reported to the OS. When set to On with Pre-boot Measurements, BIOS will store TCG compliant measurements to the TPM during POST. When set to On without Pre-boot Measurements, BIOS will bypass pre-boot measurements. | FALSE | Off, OnPbm, OnNoPbm |
| TpmActivation | TPM Activation | Attribute Value Dependant ^{8,9} | NoChange, Activate, Deactivate |
| TpmClear | Clearing the TPM will cause loss of all keys in the TPM. This could affect booting to OS. When set to Yes, all the contents of the TPM will be cleared. | Attribute Value Dependant ^{8,10} | No, Yes |
| TcmSecurity | TCM Security, this field controls the reporting of the Trusted Cryptography Module (TCM) in the system | FALSE | Off, On |
| TcmActivation | TCM Activation | Attribute Value Dependant ^{11,12} | NoChange, Activate, Deactivate |
| TcmClear | Clearing the TCM will cause loss of all keys in the TCM. This could affect booting to OS. When set to Yes, all the contents of the TCM will be cleared. This field is Read-Only when TCM Security is set to Off. | Attribute Value Dependant ^{11,13} | Yes, No |
| PwrButton | This field enables/disables the power button on the | FALSE | Enabled, Disabled |

| | | | |
|-----------------|--|-------|-------------------------|
| | front panel. | | |
| NmiButton | This field enables/disables the NMI button on the front panel. | FALSE | Enabled, Disabled |
| AcPwrRcvry | AC Power Recovery, this field specifies how the system will react after AC power has been restored to the system. It is especially useful for people who turn their systems off with a power strip. When set to Off, the system will stay off after AC is restored. When set to On, the system will turn on after AC is restored. When set to Last, the system will turn on if the system was on when AC was lost. The system will remain off if the system was off when AC was lost | FALSE | Last, On, Off |
| AcPwrRcvryDelay | AC Power Recovery Delay, this field specifies how the system will support the staggering of power-up after AC power has been restored to the system. When set to Immediate, there is no delay for power-up. When set to Random, the system will create a random delay (30s to 240s) for power-up. When set to User Defined, the system will delay power-up by that amount. The system supported user defined power-up delay range is from 30s to 240s. | FALSE | Immediate, Random, User |
| NumLock | Keyboard NumLock. | FALSE | On, Off |
| ReportKbdErr | Report Keyboard Errors. | FALSE | Report, NoReport |
| ErrPrompt | F1/F2 Prompt on Error. | FALSE | Enabled, Disabled |

- 181 NOTE: 1 – The attribute's read-only status (IsReadOnly property value) depends on the particular platform model,
182 or platform features, or the platform's bios version.
- 183 NOTE: 2 – The DmaVirtualization is read-only (IsReadOnly=TRUE) and shall have value "Disabled", if the
184 ProcVirtualization attribute is set to "Disabled". InternalSdCard
- 185 NOTE: 3 – The InternalSdCardRedundancy is read-only (IsReadOnly=TRUE) and shall have value "Disabled", if the
186 InternalSdCard attribute is set to "Disabled".
- 187 NOTE: 4 – The ProcPwrPerf, FanPwrPerf, MemPwrPerf attributes are settable (IsReadOnly=FALSE), if the
188 PowerMgmt attribute is set to "Custom"; otherwise those attributes are read-only (IsReadOnly=TRUE).
- 189 NOTE: 5 – The ProcPwrPerf shall have value:
- 190 • "OsDbpm" if PowerMgmt is set to "OsCtrl".
 - 191 • "SysDbpm" if PowerMgmt is set to "ActivePwrCtrl"

- 192 • “MaxPerf” if PowerMgmt is set to “MaxPerf”
- 193 NOTE: 6 – The FanPwrPerf shall have value “MinPwr” if PowerMgmt is set to “OsCtrl” or “ActivePwrCtrl”.
- 194 NOTE: 7 – The MemPwrPerf shall have value “MinPwr” if PowerMgmt is not set to “Custom”.
- 195 NOTE: 8 – The TpmActivation, TpmClear attributes are settable (IsReadOnly=FALSE), if the TpmSecurity attribute
196 is NOT set to “Off”; otherwise those attributes are read-only (IsReadOnly=TRUE).
- 197 NOTE: 9 – The TpmActivation shall have value “NoChange”, if TpmSecurity is set to “Off”.
- 198 NOTE: 10 – The TpmClear shall have value “No”, if TpmSecurity is set to “Off”.
- 199 NOTE: 11 – The TcmActivation, TcmClear attributes are settable (IsReadOnly=FALSE), if the PowerMgmt attribute
200 is set to “Custom”; otherwise those attributes are read-only (IsReadOnly=TRUE).
- 201 NOTE: 12 – The TcmActivation shall have value “NoChange”, if TcmSecurity is set to “Off”.
- 202 NOTE: 13 – The TcmClear shall have value “No”, if TcmSecurity is set to “Off”.

203

204 7.1.2 DCIM_BIOSString

205 This section describes the implementation for the DCIM_BIOSString class that represents a string type
206 BIOS attribute.

207 This class shall be instantiated in the Implementation Namespace.

208 7.1.2.1 WBEM URIs for WinRM®

209 The class WBEM URI shall be “http://schemas.dell.com/wbem/wscim/1/cim-
210 schema/2/DCIM_BIOSString?__cimnamespace=<Implementation Namespace>”

211 The key property shall be the InstanceID.

212 The instance WBEM URI for DCIM_BIOSString instance shall be:

213 [http://schemas.dell.com/wbem/wscim/1/cim-
schema/2/DCIM_BIOSString?__cimnamespace=<Implementation Namespace>+InstanceID=
BIOS.Setup.1-1:<AttributeName>](http://schemas.dell.com/wbem/wscim/1/cim-
214 schema/2/DCIM_BIOSString?__cimnamespace=<Implementation Namespace>+InstanceID=
215 BIOS.Setup.1-1:<AttributeName>) (AttributeName comes from Table 5)

216 7.1.2.2 Operations

217 The following table details the implemented operations on DCIM_BIOSString.

218 **Table 6 – DCIM_BIOSString - Operations**

| Operation Name | Requirements | Required Input |
|----------------------------------|--------------|-----------------|
| Get | Mandatory | Instance URI |
| Enumerate | Mandatory | Class URI |
| DCIM_BIOSService.SetAttribute() | Mandatory | See section 8.1 |
| DCIM_BIOSService.SetAttributes() | Mandatory | See section 8.2 |

219

220 7.1.2.3 Properties

221 The following table details the implemented properties for DCIM_BIOSString instance representing a
222 BIOS string attribute. The “Requirements” column shall denote the implementation requirement for the
223 corresponding property. If the column “Property Name” matches the property name, the property either
224 shall have the value denoted in the corresponding column “Additional Requirement”, or shall be
225 implemented according to the requirements in the corresponding column “Additional Requirement”.

226

Table 7 – Class: DCIM_BIOSString

| Properties | Notes | Additional Requirements |
|---------------|-----------|---|
| InstanceID | Mandatory | The property value shall be formed as follows: BIOS.Setup.1-1:<AttributeName property value>. |
| AttributeName | Mandatory | The property value shall be from the “AttributeName” column in Table 8. |
| CurrentValue | Mandatory | The property value shall match the format described in “Value Expression” column at the corresponding row in Table 8. |
| PendingValue | Mandatory | The property value shall match the format described in “Value Expression” column at the corresponding row in Table 8. |
| IsReadOnly | Mandatory | The property value shall be the value in the “IsReadOnly” column at the corresponding row in Table 8. |
| FQDD | Mandatory | The property shall be set to “BIOS.Setup.1-1”. |
| MinLength | Mandatory | The property value shall be the value in the “MinLength” column at the corresponding row in Table 8. |
| MaxLength | Mandatory | The property value shall be the value in the “MaxLength” column at the corresponding row in Table 8. |

227

228 The following table describes possible DCIM_BIOSString attributes and the requirements for the
229 AttributeName, MinLength, and MaxLength properties.

230 NOTE: The BIOS attributes listed below may not be present on all Dell systems. The presence of a particular
231 attribute depends on the model of a Dell system, the features available in the system and the BIOS version of the
232 system.

233

Table 8 – DCIM_BIOSString Attributes

| AttributeName | Attribute Description | IsReadOnly | MinLength | MaxLength | Value Expression |
|---------------|-------------------------|------------|-----------|-----------|------------------|
| AssetTag | AssetTag | FALSE | 0 | 10 | String |
| UserLcdStr | User-Defined LCD String | FALSE | | | String |

234

235 7.1.3 DCIM_BIOSInteger

236 This section describes the implementation for the DCIM_BIOSInteger class that represents an integer
237 type BIOS attribute.

238 This class shall be instantiated in the Implementation Namespace.

239 7.1.3.1 WBEM URIs for WinRM®

240 The class WBEM URI shall be “http://schemas.dell.com/wbem/wscim/1/cim-
241 schema/2/DCIM_BIOSInteger?__cimnamespace=<Implementation Namespace>”

242 The key property shall be the InstanceID.

243 The instance WBEM URI for DCIM_BIOSInteger instance shall be:
244 “http://schemas.dell.com/wbem/wscim/1/cim-

245 schema/2/DCIM_BIOSInteger?__cimnamespace=<Implementation Namespace>+InstanceID=
 246 BIOS.Setup.1-1:AttributeName (AttributeName comes from Table 5)”

247 **7.1.3.2 Operations**

248 The following table details the implemented operations on DCIM_BIOSInteger.

249 **Table 9 – DCIM_BIOSInteger - Operations**

| Operation Name | Requirements | Required Input |
|----------------------------------|--------------|-----------------|
| Get | Mandatory | Instance URI |
| Enumerate | Mandatory | Class URI |
| DCIM_BIOSService.SetAttribute() | Mandatory | See section 8.1 |
| DCIM_BIOSService.SetAttributes() | Mandatory | See section 8.2 |

250

251 **7.1.3.3 Properties**

252 The following table details the implemented properties for DCIM_BIOSInteger instance representing a
 253 BIOS integer attribute. The “Requirements” column shall denote the implementation requirement for the
 254 corresponding property. If the column “Property Name” matches the property name, the property either
 255 shall have the value denoted in the corresponding column “Additional Requirement”, or shall be
 256 implemented according to the requirements in the corresponding column “Additional Requirement”.

257 **Table 10 – Class: DCIM_BIOSInteger**

| Properties | Notes | Additional Requirements |
|---------------|-----------|---|
| InstanceID | Mandatory | The property value shall be formed as follows: “BIOS.Setup.1-1:<AttributeName property value>”. |
| AttributeName | Mandatory | The property value shall be from the “AttributeName” column in Table 811. |
| CurrentValue | Mandatory | The property value shall match the format described in “Value Expression” column at the corresponding row in Table 8. |
| PendingValue | Mandatory | The property value shall match the format described in “Value Expression” column at the corresponding row in Table 8. |
| IsReadOnly | Mandatory | The property value shall be the value in the “IsReadOnly” column at the corresponding row in Table 8. |
| FQDD | Mandatory | The property shall be set to “BIOS.Setup.1-1”. |
| LowerBound | Mandatory | The property value shall be the value in the “LowerBound” column at the corresponding row in Table 8. |
| UpperBound | Mandatory | The property value shall be the value in the “UpperBound” column at the corresponding row in Table 8. |

258

259 The following table describes possible DCIM_BIOSInteger attributes and the requirements for the
 260 AttributeName, IsReadOnly, LowerBound, and UpperBound properties.

261 NOTE: The BIOS attributes listed below may not be present on all Dell systems. The presence of a particular
 262 attribute depends on the model of a Dell system, the features available in the system and the BIOS version of the
 263 system.

264

Table 11 – DCIM_BIOSInteger Attributes

| AttributeName | Attribute Description | IsReadOnly | LowerBound | UpperBound |
|----------------------|---|-------------------|-------------------|-------------------|
| AcPwrRcvryUserDelay | AC Power Recovery User Defined Delay | TRUE | 30 | 240 |

265

266

267 **7.2 Boot Management**

268 Each of DCIM_BootConfigSetting instances shall represent a boot list, and each boot list can be enabled
 269 to be used in the next boot using the algorithm in “Boot State Enablement” column. The following boot
 270 lists shall be implemented:

271 **Table 12 – Boot Lists**

| Boot Lists | DCIM_BootConfigSetting.InstanceID | Boot State Enablement | Description |
|------------------|-----------------------------------|--|---|
| IPL/BIOS | IPL | SetAttribute() or SetAttributes() method with AttributeName “BootMode” and AttributeValue “Bios” | IPL list of boot devices as defined in the BIOS Boot Specification. IPL list represents the traditional BIOS boot list. |
| BCV | BCV | SetAttribute() or SetAttributes() method with AttributeName “BootMode” and AttributeValue “Bios” | BCV list of boot devices as defined in the BIOS Boot Specification. BCV list usually contains the list of storage controllers for booting from a particular hard drive. NOTE: BCV list is a nested list within the IPL list. Selecting “Hard drive C” in the IPL boot list selects the BCV list for booting. |
| UEFI | UEFI | SetAttribute() or SetAttributes() method with AttributeName “BootMode” and AttributeValue “Uefi” | List of UEFI devices for boot. |
| vFlash Partition | vFlash | ChangeBootOrderByInstanceID() on DCIM_BootConfigSetting with InstanceID “OneTime” and source[] containing a single vFlash DCIM_BootSourceSetting InstanceID | vFlash partitions that could be booted from. |
| One Time Boot | OneTime | ChangeBootOrderByInstanceID() on DCIM_BootConfigSetting with InstanceID “OneTime” and source[] containing a single DCIM_BootSourceSetting InstanceID from any boot list. | One time boot list contains a single boot device selected for one time boot. After the reboot, the boot list reverts to the original boot list. |

272

273 The DCIM_BootSourceSetting.InstanceID value shall represent the owning boot list instance of
 274 DCIM_BootConfigSetting, where the prefix substring value before the first colon shall match the
 275 DCIM_BootConfigSetting.InstanceID value.

276 For example: DCIM_BootSourceSetting.InstanceID with value of “**vFlash**:LABEL1:1” belongs to
 277 DCIM_BootConfigSetting boot list with InstanceID “**vFlash**”.

278 The BCV boot device that belongs to the IPL list and represents the BCV list, shall have
 279 DCIM_BootSourceSetting.InstanceID property value with prefix substring: “IPL:HardDisk”.

280 All the boot devices within the list may be sorted using the ChangeBootOrderByInstanceID() method
 281 (section 8.7) and may be enabled/disabled using the ChangeBootSourceState() method (section 8.6).

282 The DCIM_BootConfigSetting.IsCurrent, IsNext and IsDefault properties shall represent the current state
 283 of the boot list.

- 284 • The IsNext property set to 1(Is Next) shall represents that the boot list is configured to be used for
285 the next boot. vFlash boot list shall not have this value.
 - 286 • The IsNext property set to 3(Is Next for Single Use) shall represent that the boot list is configured to
287 be used ONLY for the next boot. Only the OneTime boot list may have this value for the IsNext
288 property.
- 289 The state of the boot list for the next boot shall be changed through the DCIM_BIOSEnumeration with
290 AttributeName “BootMode” (section Table 5) or through execution of ChangeBootOrderByInstanceID()
291 method on the DCIM_BootConfigSetting instance with InstanceID “OneTime” with the source[] parameter
292 having a single DCIM_BootSourceSetting InstanceID from any of the lists including vFlash.

293 Each boot list contains boot devices that shall be represented by DCIM_BootSourceSetting.

294 7.2.1 DCIM_BootConfigSetting

295 This section describes the implementation for the DCIM_BootConfigSetting class that represents a
296 particular boot list.

297 This class shall be instantiated in the Implementation Namespace.

298 7.2.1.1 WBEM URIs for WinRM®

299 The class WBEM URI shall be “http://schemas.dell.com/wbem/wscim/1/cim-
300 schema/2/DCIM_BootConfigSetting?__cimnamespace=<Implementation Namespace>”

301 The key property shall be the InstanceID.

302 The instance WBEM URI for DCIM_BootConfigSetting instance shall be:
303 “http://schemas.dell.com/wbem/wscim/1/cim-
304 schema/2/DCIM_BootConfigSetting?__cimnamespace=<Implementation Namespace>+InstanceID=<a
305 value from Table 12 DCIM_BootConfigSetting.InstanceID column>”

306 7.2.1.2 Operations

307 The following table details the implemented operations on DCIM_BootConfigSetting.

308 **Table 13 – DCIM_BootConfigSetting – Operations**

| Operation Name | Requirements | Required Input |
|----------------------------------|--------------|---|
| Get | Mandatory | Instance URI |
| Enumerate | Mandatory | Class URI |
| Invoke | Mandatory | Instance URI |
| DCIM_BIOSService.SetAttribute() | Mandatory | See section 8.1 with AttributeName = “BootMode” |
| DCIM_BIOSService.SetAttributes() | Mandatory | See section 8.2 with AttributeName = “BootMode” |

309

310 7.2.1.3 Properties

311 The following table details the implemented properties for DCIM_BootConfigSetting. The “Requirements”
312 column shall denote the implementation requirement for the corresponding property. If the column
313 “Property Name” matches the property name, the property either shall have the value denoted in the
314 corresponding column “Additional Requirement”, or shall be implemented according to the requirements
315 in the corresponding column “Additional Requirement”.

316

317

Table 14 – Class: DCIM_BootConfigSetting

| Properties and Methods | Requirement | Description |
|------------------------|-------------|--|
| InstanceID | Mandatory | The property value shall be from Table 12 “DCIM_BootConfigSetting.InstanceID” column. |
| ElementName | Mandatory | |
| IsCurrent | Mandatory | Value of 1 = Is Current (Is the current boot configuration), Value of 2 = Is Not Current (Is not the current boot configuration) |
| IsDefault | Mandatory | Value of 1 = Is Default (is the default boot configuration) Value of 2 = Is Not Default (is not the default boot configuration) |
| IsNext | Mandatory | Value of 1 = Is Next (is the next boot configuration the system will use for booting) Value of 2 = Is Not Next (is not the next boot configuration the system will use for booting) Value of 3= Is Next For Single Use (is the next boot configuration the system will use for booting for single use, one time boot only) |

318 7.2.2 DCIM_BootSourceSetting

319 This section describes the implementation for the DCIM_BootSourceSetting class that represents a boot
320 device.

321 This class shall be instantiated in the Implementation Namespace.

322 7.2.2.1 WBEM URIs for WinRM®

323 The class WBEM URI shall be “http://schemas.dell.com/wbem/wscim/1/cim-
324 schema/2/DCIM_BootSourceSetting?__cimnamespace=<Implementation Namespace>”

325 The key property shall be the InstanceID.

326 The instance WBEM URI for DCIM_BootSourceSetting instance shall be:
327 “http://schemas.dell.com/wbem/wscim/1/cim-
328 schema/2/DCIM_BootSourceSetting?__cimnamespace=<Implementation
329 Namespace>+InstanceID=<InstanceID see Table 16>”

330 7.2.2.2 Operations

331 The following table details the implemented operations on DCIM_BootSourceSetting.

332 Table 15 – DCIM_BootSourceSetting – Operations

| Operation Name | Requirements | Required Input |
|--|--------------|------------------|
| Get | Mandatory | Instance URI |
| Enumerate | Mandatory | Class URI |
| DCIM_BootConfigSetting. ChangeBootSourceState() | Mandatory | See section 8.6. |
| DCIM_BootConfigSetting. ChangeBootOrderByInstanceID | Mandatory | See section 8.7 |

333

334 **7.2.2.3 Properties**

335 The following table details the implemented properties for DCIM_BootSourceSetting. The “Requirements”
336 column shall denote the implementation requirement for the corresponding property. If the column
337 “Property Name” matches the property name, the property either shall have the value denoted in the
338 corresponding column “Additional Requirement”, or shall be implemented according to the requirements
339 in the corresponding column “Additional Requirement”.

Table 16 – Class: DCIM_BootSourceSetting

| Properties and Methods | Requirement | Description |
|-------------------------|-------------|---|
| InstanceID | Mandatory | The property value shall have prefix from Table 12 “DCIM_BootSourceSetting.InstanceID” column followed by a unique id representing the boot source. For example: UEFI:Disk.USBFront.2- 1:3156051d1529b8f4f88c99f54b895350 (boot source belongs to UEFI bootlist) IPL:NIC.Slot.4- 2:d0f2c6c736adb8c2238153293a0c026c (boot source belongs to IPL bootlist) BCV:RAID.Integrated.1- 1:b84a10539d2ccaca5e86b7de3cae08a8 (boot source belongs to BCV bootlist) |
| BIOSBootString | Mandatory | Descriptive boot source name |
| BootString | Mandatory | Descriptive boot source name |
| PendingAssignedSequence | Mandatory | The value shall be set through the successful execution of the ChangeBootOrderByInstanceID() method, indicates the Pending Assigned Sequence of this instance. |
| CurrentAssignedSequence | Mandatory | The <i>CurrentAssignedSequence</i> attribute of this instance defines the its place in the zero based indexed boot sequence. |
| PendingEnabledStatus | Mandatory | The value shall be set through the successful execution of the ChangeBootSourceState () method, indicates the Pending Enabled Status of this instance. |
| CurrentEnabledStatus | Mandatory | The <i>CurrentEnabledStatus</i> attribute of this instance identifies whether it is enabled or disabled, if disabled this boot source will not be attempted for boot while booting from the bootlist. |
| ElementName | Mandatory | |
| FailThroughSupported | Mandatory | An enumeration indicating the behavior when the attempt to boot using the boot source fails (no media, timeout). The current values in the enumeration are: 0 = Unknown 1 = Is Supported 2 = Is Not Supported A value of 1 (Is Supported) indicates that next boot source the boot order is used. A value of 2 (Is Not Supported) indicates that the boot order is terminated and no other boot sources are used. |

341 **7.3 Service for Method Invocations**

342 **7.3.1 DCIM_BIOSService**

343 This section describes the implementation for the DCIM_BIOSService class that represents the BIOS and
344 boot management service.

345 This class shall be instantiated in the Implementation Namespace.

346 The DCIM_LCElementConformsToProfile association(s) shall reference the DCIM_BIOSService
347 instance(s).

348 **7.3.1.1 WBEM URIs for WinRM®**

349 The class WBEM URI shall be “http://schemas.dell.com/wbem/wscim/1/cim-
350 schema/2/DCIM_BIOSService?__cimnamespace=<Implementation Namespace>”

351 The key properties shall be SystemCreationClassName, CreationClassName, SystemName and Name.

352 The instance WBEM URI for DCIM_BIOSService instance shall be:
353 “http://schemas.dell.com/wbem/wscim/1/cim-
354 schema/2/DCIM_BIOSService?__cimnamespace=<Implementation
355 Namespace>+SystemCreationClassName=DCIM_ComputerSystem+CreationClassName=DCIM_BIOSService+
356 SystemName=DCIM:ComputerSystem+Name=DCIM:BIOSService”

357 **7.3.1.2 Operations**

358 The following table details the implemented operations on DCIM_BIOSService.

359 **Table 17 – DCIM_BIOSService – Operations**

| Operation Name | Requirements | Required Input |
|----------------|--------------|----------------|
| Get | Mandatory | Instance URI |
| Enumerate | Mandatory | Class URI |
| Invoke | Mandatory | Instance URI |

360

361 **7.3.1.3 Properties**

362 The following table details the implemented properties for DCIM_BIOSService instance representing a
363 system in a system. The “Requirements” column shall denote the implementation requirement for the
364 corresponding property. If the column “Property Name” matches the property name, the property either
365 shall have the value denoted in the corresponding column “Additional Requirement”, or shall be
366 implemented according to the requirements in the corresponding column “Additional Requirement”.

367

368

Table 18 – Class: DCIM_BIOSService

| Properties and Methods | Requirement | Description |
|-------------------------|-------------|--|
| SystemCreationClassName | Mandatory | The property value shall be “DCIM_ComputerSystem”. |
| CreationClassName | Mandatory | The property value shall be “DCIM_BIOSService”. |
| SystemName | Mandatory | The property value shall be “DCIM:ComputerSystem”. |
| Name | Mandatory | The property value shall be “DCIM:BIOSService” |
| ElementName | Mandatory | The property value shall be “BIOS Service” |

369 **7.4 Profile Registration**

370 **7.4.1 BIOS and Boot Management Profile Registration**

371 This section describes the implementation for the DCIM_LCRegisteredProfile class.

372 This class shall be instantiated in the Interop Namespace.

373 The DCIM_ElementConformsToProfile association(s) shall reference the DCIM_LCRegisteredProfile
374 instance.

375 **7.4.1.1 WBEM URIs for WinRM®**

376 The class WBEM URI shall be "http://schemas.dmtf.org/wbem/wscim/1/cim-
377 schema/2/CIM_RegisteredProfile?__cimnamespace=<Interop Namespace>"

378 The key property shall be the InstanceID property.

379 The instance WBEM URI shall be: “http://schemas.dell.com/wbem/wscim/1/cim-
380 schema/2/DCIM_LCRegisteredProfile?__cimnamespace=<InteropNamespace>+InstanceID=DCIM:BIOS
381 andBootManagement:1.0.0”

382 **7.4.1.2 Operations**

383 The following table details the implemented operations on DCIM_LCRegisteredProfile.

384 **Table 19 – DCIM_LCRegisteredProfile - Operations**

| Operation Name | Requirements | Required Input |
|----------------|--------------|----------------|
| Get | Mandatory | Instance URI |
| Enumerate | Mandatory | Class URI |

385

386 **7.4.1.3 Properties**

387 The following table details the implemented properties for DCIM_LCRegisteredProfile instance
388 representing BIOS and Boot Management Profile implementation. The “Requirements” column shall
389 denote the implementation requirement for the corresponding property. If the column “Name” matches the
390 property name, the property either shall have the value denoted in the corresponding column “Additional
391 Requirements”, or shall be implemented according to the requirements in the corresponding column
392 “Additional Requirements”.

393 **Table 20 – Class: CIM_RegisteredProfile**

| Properties | Requirement | Description |
|-----------------------------|-------------|---|
| RegisteredName | Mandatory | This property shall have a value of “BIOS and Boot Management”. |
| RegisteredVersion | Mandatory | This property shall have a value of “1.0.0”. |
| RegisteredOrganization | Mandatory | This property shall have a value of 1 (Other). |
| OtherRegisteredOrganization | Mandatory | This property shall match “DCIM” |

394
395

396 **8 Methods**

397 This section details the requirements for supporting intrinsic operations and extrinsic methods for the CIM
 398 elements defined by this profile.

399 **8.1 CIM_BIOSService.SetAttribute()**

400 The SetAttribute() method is used to set or change the value of a BIOS attribute.

401 Invocation of the SetAttribute() method shall change the value of the attribute's CurrentValue or
 402 attribute's PendingValue property to the value specified by the AttributeValue parameter if the attribute's
 403 IsReadOnly property is FALSE. Invocation of this method when the attribute's IsReadOnly property is
 404 TRUE shall result in no change to the value of the attribute's CurrentValue property. The results of
 405 changing this value are described with the SetResult parameter.

406 Return code values for the SetAttribute() method are specified in Table 21 and parameters are specified
 407 in Table 22. Invoking the SetAttribute() method multiple times can result in the earlier requests being
 408 overwritten or lost.

409 **Table 21 – SetAttribute() Method: Return Code Values**

| Value | Description |
|-------|-------------------------|
| 0 | Completed with no error |
| 1 | Not supported |
| 2 | Failed |

410 **Table 22 – SetAttribute() Method: Parameters**

| Qualifiers | Name | Type | Description/Values |
|------------|--------------------|--------|---|
| IN, REQ | Target | String | Shall be set to "BIOS.Setup.1-1" |
| IN, REQ | AttributeName | String | Shall contain the AttributeName property value for the attribute to be modified. |
| IN, REQ | AttributeValue[] | String | Shall contain the desired attribute value. If the value is valid, the CurrentValue or PendingValue property of the specified attribute will be modified. |
| OUT | SetResult | String | Returns: "Set CurrentValue property" when the attributes current value is set. "Set PendingValue property" when the attributes pending value is set. |
| OUT | RebootRequired | String | Returns: "Yes" if reboot is required, "No" if reboot is not required. |
| OUT | MessageID | String | Error MessageID |
| OUT | Message | String | Error Message |
| OUT | MessageArguments[] | String | Error MessageArguments |

411

412 **8.2 DCIM_BIOSService.SetAttributes()**

413 The SetAttributes() method is used to set or change the values of a group of attributes.

414 Invocation of the SetAttributes() method shall change the values of the attribute's CurrentValue or
 415 PendingValue properties that correspond to the names specified by the AttributeName parameter and the
 416 values specified by the AttributeValue parameter if the respective attribute's IsReadOnly property is
 417 FALSE. Invocation of this method when the respective attribute's IsReadOnly property is TRUE shall
 418 result in no change to the corresponding value of the attribute's CurrentValue property.

419 Return code values for the SetAttributes() method are specified in Table 23, and parameters are
 420 specified in Table 24.

421 Invoking the SetAttributes() method multiple times can result in the earlier requests being overwritten or
 422 lost.

423 **Table 23 – SetAttributes() Method: Return Code Values**

| Value | Description |
|-------|-------------------------|
| 0 | Completed with no error |
| 1 | Not supported |
| 2 | Failed |

424 **Table 24 – SetAttributes() Method: Parameters**

| Qualifiers | Name | Type | Description/Values |
|------------|--------------------|--------|--|
| IN, REQ | Target | String | Shall be set to "BIOS.Setup.1-1" |
| IN, REQ | AttributeName[] | String | Shall contain the AttributeName property value for the attribute to be modified. |
| IN, REQ | AttributeValue[] | String | Shall contain the desired attribute values. If the value is valid, the CurrentValue or PendingValue property of the specified attribute will be modified. |
| OUT | SetResult[] | String | Returns: "Set CurrentValue property" when the attributes current value is set. "Set PendingValue property" when the attributes pending value is set. |
| OUT | RebootRequired[] | String | Returns: "Yes" if reboot is required, "No" if reboot is not required. |
| OUT | MessageID[] | String | Error MessageID |
| OUT | Message[] | String | Error Message |
| OUT | MessageArguments[] | String | Error MessageArguments |

425 **8.3 DCIM_BIOSService.CreateTargetedConfigJob()**

426 The CreateTargetedConfigJob() method is used to apply the pending values created by the SetAttribute,
 427 SetAttributes, ChangeBootSourceState and ChangeBootOrderByInstanceID methods. The successful
 428 execution of this method creates a job for application of pending values.

429 CreateTargetedConfigJob method supports the following optional input parameters

- 430 1. RebootJobType: when provided in the input parameters, creates a specific reboot job to
 431 "PowerCycle" or "Graceful Reboot without forced shutdown" or "Graceful Reboot with forced shutdown".
 432 This parameter only creates the RebootJob and does not schedule it.
- 433 2. ScheduledStartTime: When provided in the input parameters, schedules the "configuration job" and the
 434 optional "reboot job" at the specified start time. A special value of "TIME_NOW" schedules the job(s)
 435 immediately.
- 436 3. UntilTime: This parameter has a dependency on "ScheduledStartTime", together "ScheduledStartTime" and
 437 "UntilTime" define a time window for scheduling the job(s). Once scheduled, jobs will be executed within the
 438 time window.

439 If CreateTargetedConfigJob method is executed without the 3 optional parameters discussed above, then
 440 configuration job is created but not scheduled. However, this configuration job can be scheduled later using the
 441 DCIM_JobService.SetupJobQueue () method from the "Job Control Profile". DCIM_JobService.SetupJobQueue ()
 442 can be executed to schedule several configuration jobs including the reboot job. Refer to "Job Control Profile" for
 443 more details.

444 Return code values for the CreateTargetedConfigJob() method are specified in Table 23, and parameters
 445 are specified in Table 24.

446 Subsequent calls to CreateTargetedConfigJob after the first CreateTargetedConfigJob will result in error
 447 until the first job is completed."

448 **Table 25 – CreateTargetedConfigJob() Method: Return Code Values**

| Value | Description |
|-------|---------------|
| 0 | Success |
| 1 | Not supported |
| 2 | Failed |
| 4096 | Job Created |

449 **Table 26 – CreateTargetedConfigJob() Method: Parameters**

| Qualifiers | Name | Type | Description/Values |
|------------|--------------------|---------------------|---|
| IN, REQ | Target | String | Shall be set to "BIOS.Setup.1-1" |
| IN | RebootJobType | UInt16 | Shall contain the requested reboot type: 1 - PowerCycle 2 - Graceful Reboot without forced shutdown 3 - Graceful Reboot with forced shutdown. |
| IN | ScheduledStartTime | String | Start time for the job execution in format: yyyymmddhhmmss. The string "TIME_NOW" means immediate. |
| IN | UntilTime | String | End time for the job execution in format: yyyymmddhhmmss. : If this parameter is not NULL, then ScheduledStartTime parameter shall also be specified. |
| OUT | Job | CIM_ConcreteJob REF | Reference to the newly created pending value application job. |
| OUT | MessageID | String | Error MessageID |
| OUT | Message | String | Error Message |
| OUT | MessageArguments[] | String | Error MessageArguments |

450

451 **8.4 DCIM_BIOSService.DeletePendingConfiguration()**

452 The DeletePendingConfiguration() method is used to cancel the pending values created by the
453 SetAttribute and SetAttributes methods. The DeletePendingConfiguration() method cancels the pending
454 configuration changes made before the configuration job is created with CreateTargetedConfigJob(). This
455 method only operates on the pending changes prior to CreateTargetedConfigJob() being called. After the
456 configuration job is created, the pending changes can only be canceled by calling DeleteJobQueue()
457 method in the Job Control profile.

458 Return code values for the DeletePendingConfiguration() method are specified in Table 27, and
459 parameters are specified in Table 28.

460 **Table 27 – DeletePendingConfiguration() Method: Return Code Values**

| Value | Description |
|-------|-------------------------|
| 0 | Completed with no error |
| 1 | Not supported |
| 2 | Failed |

461 **Table 28 – DeletePendingConfiguration() Method: Parameters**

| Qualifiers | Name | Type | Description/Values |
|------------|--------------------|--------|------------------------|
| IN, REQ | Target | String | FQDD of the BIOS |
| OUT | MessageID | String | Error MessageID |
| OUT | Message | String | Error Message |
| OUT | MessageArguments[] | String | Error MessageArguments |

462

463 **8.5 DCIM_BIOSService.ChangePassword()**

464 The ChangePassword() method is used to set the system and setup password in BIOS setting.

465 Return code values for the ChangePassword() method are specified in , and parameters are specified in
466 Table 34.

467 For old and new passwords, use “null” or not sending it for no password (case sensitive).

468 **Table 33 – ChangePassword() Method: Return Code Values**

| Value | Description |
|-------|-------------------------|
| 0 | Completed with no error |
| 1 | Not supported |
| 2 | Failed |

469 **Table 34 – ChangePassword() Method: Parameters**

| Qualifiers | Name | Type | Description/Values |
|------------|--------|--------|--------------------|
| IN, REQ | Target | String | FQDD of the BIOS |

| Qualifiers | Name | Type | Description/Values |
|------------|--------------------|--------|--|
| IN, REQ | PasswordType | Uint16 | Password Type. 1 – System Password 2- Setup Password |
| IN, REQ | OldPassword | string | Old Password null or string |
| IN, REQ | NewPassword | string | New Password null or string |
| OUT | MessageID | String | Error MessageID |
| OUT | Message | String | Error Message |
| OUT | MessageArguments[] | String | Error MessageArguments |

470

471

472 **8.6 DCIM_BootConfigSetting.ChangeBootSourceState()**

473 The ChangeBootSourceState() method is used change the enabled/disabled state of a single or multiple
474 boot devices.

475 The successful invocation of the ChangeBootSourceState() method shall change the boot sources state
476 and affect DCIM_BootSourceSetting.PendingEnabledStatus properties. Upon the successful invocation,
477 the DCIM_BootSourceSetting.PendingEnabledStatus shall have the value specified by the EnabledState
478 parameter for the DCIM_BootSourceSetting instances with the InstanceID property matching the
479 InstanceID parameter value(s).

480 Upon the successful completion of the returned job, the CurrentEnabledStatus shall have the same value
481 as the PendingEnabledStatus.

482 Return code values for the ChangeBootSourceState() method are specified in Table 29 and parameters
483 are specified in Table 30. Invoking the ChangeBootSourceState() method multiple times can result in the
484 earlier requests being overwritten or lost.

485 **Table 29 – ChangeBootSourceState() Method: Return Code Values**

| Value | Description |
|-------|-------------------------|
| 0 | Completed with no error |
| 1 | Not supported |
| 2 | Failed |
| 4096 | Job Created |

486 **Table 30 – ChangeBootSourceState() Method: Parameters**

| Qualifiers | Name | Type | Description/Values |
|------------|--------------------|----------------------|--|
| IN, REQ | EnabledState | String | Shall contain the requested state for the boot device. |
| IN, REQ | source[] | String | Shall contain the InstanceID value(s) for DCIM_BootSourceSetting instances to be affected. |
| OUT | Job | CIM_Concrete Job REF | Reference to the newly created pending value application job. |
| OUT | MessageID | String | Error MessageID |
| OUT | Message | String | Error Message |
| OUT | MessageArguments[] | String | Error MessageArguments |

487 **8.7 DCIM_BootConfigSetting.ChangeBootOrderByInstanceID()**

488 The ChangeBootOrderByInstanceID() method is used to change the order of boot devices within the boot
489 list.

490 The successful invocation of the ChangeBootOrderByInstanceID() method shall order the boot devices in
491 the list in accordance to the corresponding array element in the “source” parameter array. The omitted
492 boot devices in the “source” parameter array shall be omitted in the boot list ordering.

493 Each element of the “source” parameter array shall have value of a DCIM_BootSourceSetting.InstanceID
494 property.

495 Upon successful completion of this method, the value of the PendingAssignedSequence property on each
496 instance of CIM_BootSourceSetting shall be updated such that the values are monotonically increasing in
497 correlation with the position of the referenced DCIM_BootSourceSetting instance in the “source” input
498 parameter array. That is, the first position in the array shall have the lowest non-zero value for
499 PendingAssignedSequence. The second position will have the second lowest value, and so on.

500 Upon successful completion of this method, the value of the PendingAssignedSequence property on each
501 instance of DCIM_BootSourceSetting, that relates to the target DCIM_BootConfigSetting instance that is
502 not present in the input array, shall be assigned a value of 0.

503 Upon the successful completion of the returned job, the CurrentAssignedSequence shall have the same
504 value as the PendingAssignedSequence.

505 Return code values for the ChangeBootOrderByInstanceID() method are specified in Table 31 and
506 parameters are specified in Table 32. Invoking the ChangeBootOrderByInstanceID() method multiple
507 times can result in the earlier requests being overwritten or lost.

508 **Table 31 – ChangeBootOrderByInstanceID() Method: Return Code Values**

| Value | Description |
|-------|-------------------------|
| 0 | Completed with no error |
| 1 | Not supported |
| 2 | Failed |
| 4096 | Job Created |

509 **Table 32 – ChangeBootOrderByInstanceID() Method: Parameters**

| Qualifiers | Name | Type | Description/Values |
|------------|--------------------|----------------------|--|
| IN, REQ | source[] | String | Shall contain the InstanceID value(s) for DCIM_BootSourceSetting instances to change the order of. |
| OUT | Job | CIM_Concrete Job REF | Reference to the newly created pending value application job. |
| OUT | MessageID | String | Error MessageID |
| OUT | Message | String | Error Message |
| OUT | MessageArguments[] | String | Error MessageArguments |

510

511 **9 Use Cases**

512 This section contains use cases for the Dell BIOS and Boot Profile.

513 Note that URIs in this section are in form of WBEM URIs for WinRM®.

514 **9.1 Discovery of BIOS and Boot profile support**

515 Use one of the two procedures below to confirm the existence of BIOS and Boot profile support

516 A) GET the *DCIM_LCRegisteredProfile* instance using an *InstanceID* of
517 DCIM:BIOSandBootManagement:1.0.0. See section 3.14 for a definition of GET .

518 Instance URI:

519 [http://schemas.dmtf.org/wbem/wscim/1/cim-
522 schema/2/DCIM_LCRegisteredProfile?_cimnamespace=root/interop+InstanceID=DCIM:BIOSan
523 dBootManagement:1.0.0](http://schemas.dmtf.org/wbem/wscim/1/cim-
520 schema/2/DCIM_LCRegisteredProfile?_cimnamespace=root/interop+InstanceID=DCIM:BIOSan
521 dBootManagement:1.0.0)

523 Results for the *InstanceID* of DCIM:BIOSandBootManagement:1.0.0 shown below. If no instance
524 is returned, the profile is not supported.

525 *DCIM_LCRegisteredProfile*
526 *AdvertiseTypeDescriptions = WS-Identify, Interop Namespace*
527 *AdvertiseTypes = 1, 1*
528 *InstanceID = DCIM:BIOSandBootManagement:1.0.0*
529 *OtherRegisteredOrganization = DCIM*
530 *RegisteredName = BIOS and Boot Management*
531 *RegisteredOrganization = 1*
532 *RegisteredVersion = 1.0.0*

534 B) ENUMERATE the *CIM_RegisteredProfile* class. See section 3.13 for a definition of
535 ENUMERATE .

536 Class URI:

537 [http://schemas.dmtf.org/wbem/wscim/1/cim-
539 schema/2/CIM_RegisteredProfile?_cimnamespace=root/interop](http://schemas.dmtf.org/wbem/wscim/1/cim-
538 schema/2/CIM_RegisteredProfile?_cimnamespace=root/interop)

539 Then query the result for the following properties:

540 *RegisteredName = BIOS and Boot Management, OtherRegisteredOrganization = DCIM,*
541 *RegisteredVersion = 1.0.0*

542 **9.2 Inventory of BIOS attributes in system**

543 ENUMERATE the *DCIM_BIOSEnumeration* class to view all available instances of the class.
544 For the class and general instance URI structure, see section 7.1.1.1

545 Class URI:

546 [http://schemas.dell.com/wbem/wscim/1/cim-
548 schema/2/DCIM_BIOSEnumeration?_cimnamespace=root/dcim](http://schemas.dell.com/wbem/wscim/1/cim-
547 schema/2/DCIM_BIOSEnumeration?_cimnamespace=root/dcim)

548 The instance information of all available BIOS attributes will be returned

549 9.3 Get the first BIOS attribute's information

550 The URI for getting particular instance information is deterministic (i.e the *InstanceID* will be
551 unique for each instance)

552 For the first BIOS attribute in the system, the instance URI will be:

553 [http://schemas.dell.com/wbem/wscim/1/cim-
schema/2/DCIM_BIOSEnumeration?_cimnamespace=root/dcim+InstanceID=BIOS.Setup.1-
1:MemTest](http://schemas.dell.com/wbem/wscim/1/cim-
554 schema/2/DCIM_BIOSEnumeration?_cimnamespace=root/dcim+InstanceID=BIOS.Setup.1-
555 1:MemTest)

556 The instance of *DCIM_BIOSEnumeration* that contains the information on the first BIOS attribute
557 will be returned

558 9.4 Setting BIOS attributes

559 A) ENUMERATE the *DCIM_BIOSEnumeration* class as shown in section 9.2 and identify
560 the applicable instances

561 B) Confirm the *IsReadOnly* field is set to false

562 C) To invoke the *SetAttribute()* or *SetAttributes()* method, extract the instance information
563 from A) and construct the input parameters per Table 24

564 D) INVOKE the *SetAttribute()* or *SetAttributes()* method

565 Class URI:

566 [http://schemas.dmtf.org/wbem/wscim/1/cim-
schema/2/root/dcim/DCIM_BIOSService?SystemCreationClassName=DCIM_ComputerS
ystem+CreationClassName=DCIM_BIOSService+SystemName=DCIM:ComputerSystem
+Name=DCIM:BIOSService](http://schemas.dmtf.org/wbem/wscim/1/cim-
567 schema/2/root/dcim/DCIM_BIOSService?SystemCreationClassName=DCIM_ComputerS
568 ystem+CreationClassName=DCIM_BIOSService+SystemName=DCIM:ComputerSystem
569 +Name=DCIM:BIOSService)

570 E) Examine output parameters per Table 23.

571 F) Apply the pending values (Section 9.5)

572 G) Repeat A) to confirm successful execution of the method

573 9.5 Apply pending values

574 A) To invoke the *CreateTargetedConfigJob()* method, construct input parameters per Table
575 26 and use the BIOS FQDD from section 9.2

576 B) INVOKE *CreateTargetedConfigJob()* method

578 Class URI:

579 [http://schemas.dmtf.org/wbem/wscim/1/cim-
schema/2/root/dcim/DCIM_BIOSService?SystemCreationClassName=DCIM_ComputerS
ystem+CreationClassName=DCIM_BIOSService+SystemName=DCIM:ComputerSystem
+Name=DCIM:BIOSService](http://schemas.dmtf.org/wbem/wscim/1/cim-
580 schema/2/root/dcim/DCIM_BIOSService?SystemCreationClassName=DCIM_ComputerS
581 ystem+CreationClassName=DCIM_BIOSService+SystemName=DCIM:ComputerSystem
582 +Name=DCIM:BIOSService)

583 C) Allow several minutes for the UEFI to execute the SSIB task, which will be followed by a
584 reboot of the system

585 D) Query the status of the *jobID* output using the job control profile methods

586 9.6 Delete pending values

587 A) To invoke the DeletePendingConfiguration() method, construct input parameters per
588 Table 28 and use the BIOS FQDD from section 9.2

589 B) INVOKE DeletePendingConfiguration() method

590 Class URI:

591 [http://schemas.dmtf.org/wbem/wscim/1/cim-
schema/2/root/dcim/DCIM_BIOSService?SystemCreationClassName=DCIM_ComputerS
ystem+CreationClassName=DCIM_BIOSService+SystemName=DCIM:ComputerSystem
+Name=DCIM:BIOSService](http://schemas.dmtf.org/wbem/wscim/1/cim-
592 schema/2/root/dcim/DCIM_BIOSService?SystemCreationClassName=DCIM_ComputerS
593 ystem+CreationClassName=DCIM_BIOSService+SystemName=DCIM:ComputerSystem
594 +Name=DCIM:BIOSService)

595 C) If the return parameters indicate success, per Table 27, no further action necessary

596 9.7 Inventory of boot configurations in system

597 ENUMERATE the *DCIM_BootConfigSetting* class to view all available instances of the class.
598 For the class and general instance URI structure, see section section 7.2.1.1

599 Class URI:

600 [http://schemas.dmtf.org/wbem/wscim/1/cim-
schema/2/DCIM_BootConfigSetting?_cimnamespace=root/dcim](http://schemas.dmtf.org/wbem/wscim/1/cim-
601 schema/2/DCIM_BootConfigSetting?_cimnamespace=root/dcim)

602 The instance information of all available boot configurations will be returned

603 9.8 Get the first boot configuration's information

604 The URI for getting particular instance information is deterministic (i.e the *InstanceID* will be
605 unique for each instance)

606 For the first boot configuration in the system, the instance URI will be:

607 [http://schemas.dmtf.org/wbem/wscim/1/cim-
schema/2/DCIM_BootConfigSetting?_cimnamespace=root/dcim+InstanceID=IPL](http://schemas.dmtf.org/wbem/wscim/1/cim-
608 schema/2/DCIM_BootConfigSetting?_cimnamespace=root/dcim+InstanceID=IPL)

609 The instance of *DCIM_BootConfigSetting* that contains the information on the first boot
610 configuration will be returned

611 9.9 Inventory of boot sources in system

612 ENUMERATE the *DCIM_BootSourceSetting* class to view all available instances of the class.
613 For the class and general instance URI structure, see section section 7.2.2.1

614 Class URI:

615 [http://schemas.dmtf.org/wbem/wscim/1/cim-
schema/2/DCIM_BootSourceSetting?_cimnamespace=root/dcim](http://schemas.dmtf.org/wbem/wscim/1/cim-
616 schema/2/DCIM_BootSourceSetting?_cimnamespace=root/dcim)

617 The instance information of all available boot sources will be returned

618 9.10 Changing boot order by instance

619 A) ENUMERATE the *DCIM_BootConfigSetting* class as shown in 9.7 and identify the
620 *ElementName* field containing *BootSeq* and corresponding *InstanceID* (IPL or UEFI)

- 621 B) ENUMERATE the *DCIM_BootSourceSetting* class as shown in 9.9 and identify the boot
622 source *InstanceID*. The *CurrentAssignedSequence* attribute of each instance defines the
623 instance's place in the zero based indexed boot sequence
- 624 C) To invoke the *ChangeBootOrderByInstanceID()* method, extract the instance information
625 from A) and B) and construct the input parameters per Table 32 **Error! Reference source**
626 **not found.**
- 627 D) INVOKE *ChangeBootOrderByInstanceID()* method
- 628 Class URI:
- 629 [http://schemas.dmtf.org/wbem/wscim/1/cim-
schema/2/root/dcim/DCIM_BootConfigSetting?InstanceID=IPL](http://schemas.dmtf.org/wbem/wscim/1/cim-
630 schema/2/root/dcim/DCIM_BootConfigSetting?InstanceID=IPL)
- 631 E) Examine output parameters per Table 31
- 632 F) Apply the pending values (Section 9.5)
- 633 G) Allow several minutes for the UEFI to execute the SSIB task, which will be followed by a
634 reboot of the system
- 635 H) Repeat B) to confirm successful execution of the method

636 9.11 Enable or disable boot source

- 637 A) ENUMERATE the *DCIM_BootConfigSetting* class as shown in 9.7 and identify the
638 *ElementName* field containing *BootSeq* and corresponding *InstanceID*.
- 639 B) ENUMERATE the *DCIM_BootSourceSetting* class as shown in 9.9 and identify the boot
640 source *InstanceID*. The *CurrentEnabledStatus* attribute of each instance identifies whether it
641 is enable or disabled
- 642 C) To invoke the *ChangeBootSourceState()* method, extract the instance information from
643 A) and B) and construct the input parameters per Table 30
- 644 D) INVOKE *ChangeBootSourceState()* method
- 645 Class URI:
- 646 [http://schemas.dmtf.org/wbem/wscim/1/cim-
schema/2/root/dcim/DCIM_BootConfigSetting?InstanceID=IPL](http://schemas.dmtf.org/wbem/wscim/1/cim-
647 schema/2/root/dcim/DCIM_BootConfigSetting?InstanceID=IPL)
- 648 E) Examine output parameters per Table 29
- 649 F) Apply the pending values (Section 9.5)
- 650 G) Allow several minutes for the UEFI to execute the SSIB task, which will be followed by a
651 reboot of the system
- 652 H) Repeat B) to confirm successful execution of the method

653 9.12 One time boot

- 654 A) ENUMERATE the *DCIM_BootSourceSetting* class as shown in 9.9 and identify the
655 desired one time boot source: vFlash, IPL, or UEFI

- 656 B) To invoke the `ChangeBootOrderByInstanceID()` method, extract the instance information
657 from A) and construct the input parameters per Table 32; providing an xml with one and only
658 one `DCIM_BootSourceSetting` InstanceID **Error! Reference source not found.**
- 659 C) INVOKE `ChangeBootOrderByInstanceID()` method
- 660 Class URI:
- 661 [http://schemas.dmtf.org/wbem/wscim/1/cim-
schema/2/root/dcim/DCIM_BootConfigSetting?InstanceID=OneTime](http://schemas.dmtf.org/wbem/wscim/1/cim-
662 schema/2/root/dcim/DCIM_BootConfigSetting?InstanceID=OneTime)
- 663 D) Examine output parameters per Table 31
- 664 E) ENUMERATE the `DCIM_BootSourceSetting` class as shown in 9.9 and verify that an
665 additional entry for that `DCIM_BootSourceSetting` appears prefixed with "OneTime:"
- 666 F) ENUMERATE the `DCIM_BootConfigSetting` class as shown in 9.7, the `OneTime` entry
667 should have an `IsNext` value of 3, which means "Is Next for Single Use"
- 668
- 669

670
671
672
673

ANNEX A (informative)

Related MOF Files

- 674 Dell Tech Center MOF Library:
675 <http://www.delltechcenter.com/page/DCIM.Library.MOF>
676
- 677 Related Managed Object Format (MOF) files:
- 678 DCIM_BootConfigSetting.mof
 - 679 DCIM_BootSourceSetting.mof
 - 680 DCIM_BIOSEnumeration.mof
 - 681 DCIM_BIOSInteger.mof
 - 682 DCIM_BIOSService.mof
 - 683 DCIM_BIOSString.mof
 - 684 DCIM_LCElementConformsToProfile
 - 685 DCIM_LCRegisteredProfile
 - 686