

1 Simple Identity  
2 Management Profile



3  
4  
5  
6  
7  
8  
9  
10  
11  
12  
13  
14  
15  
16  
17  
18  
19  
20  
21  
22  
23  
24  
25  
26  
27  
28  
29  
30

**Document Number: DCIM1055**  
**Document Type: Specification**  
**Document Status: Published**  
**Document Language: E**  
**Date: 2012-03-08**

**Version: 1.0.0**

31  
32  
33  
34  
35  
36  
37  
38  
39  
40  
41  
42  
43  
44  
45  
46  
47  
48  
49  
50  
51  
52  
53  
54  
55  
56  
57  
58  
59  
60  
61  
62  
63  
64  
65  
66

THIS PROFILE IS FOR INFORMATIONAL PURPOSES ONLY, AND MAY CONTAIN TYPOGRAPHICAL ERRORS AND TECHNICAL INACCURACIES. THE CONTENT IS PROVIDED AS IS, WITHOUT EXPRESS OR IMPLIED WARRANTIES OF ANY KIND. ABSENT A SEPARATE AGREEMENT BETWEEN YOU AND DELL™ WITH REGARD TO FEEDBACK TO DELL ON THIS PROFILE SPECIFICATION, YOU AGREE ANY FEEDBACK YOU PROVIDE TO DELL REGARDING THIS PROFILE SPECIFICATION WILL BE OWNED AND CAN BE FREELY USED BY DELL.

© 2012 Dell Inc. All rights reserved. Reproduction in any manner whatsoever without the express written permission of Dell, Inc. is strictly forbidden. For more information, contact Dell.

*Dell* and the *DELL* logo are trademarks of Dell Inc. Other trademarks and trade names may be used in this document to refer to either the entities claiming the marks and names or their products. Dell disclaims proprietary interest in the marks and names of others.

# CONTENTS

67			
68	1	Scope .....	5
69	2	Normative References.....	5
70	3	Terms and Definitions .....	6
71	4	Symbols and Abbreviated Terms .....	7
72	5	Synopsis.....	7
73	6	Description .....	9
74	7	Implementation Description.....	12
75	7.1	DCIM_Account - Local Account.....	14
76	7.2	DCIM_EnabledLogicalElementCapabilities – Account Capabilities .....	15
77	7.3	DCIM_LocalUserIdentity - Local User's General Security Principal.....	16
78	7.4	DCIM_LANIdentity – Local User's IPMI over LAN Security Principal.....	17
79	7.5	DCIM_SerialIdentity – Local User's IPMI Serial Security Principal .....	18
80	7.6	DCIM_CLPIdentity – Local User's CLP Security Principal .....	19
81	7.7	DCIM_LocalUserAccountManagementService - Local User Account Management	
82		Service .....	20
83	7.8	DCIM_IPMIAccountManagementService - IPMI Account Management Service .....	21
84	7.9	DCIM_CLPAccountManagementService - CLP Account Management Service.....	22
85	7.10	DCIM_LocalUserAccountMangementCapabilities - Local User Account Management	
86		Capabilities .....	23
87	7.11	DCIM_IPMICLPAccountMangementCapabilities - IPMI/CLIP Account Management	
88		Capabilities .....	24
89	7.12	DCIM_RegisteredProfile - DMTF Simple Identity Management Profile Profile Registration ....	25
90	7.13	DCIM_LCRegisteredProfile - DCIM Simple Identity Management Profile Profile	
91		Registration.....	26
92	8	Methods.....	27
93	8.1	DCIM_Account.RequestStateChange().....	27
94	9	Use Cases.....	28
95	10	CIM Elements.....	28
96	11	Privilege and License Requirement .....	29
97			

98 **Figures**

99 Figure 1 – Class Diagram ..... 9  
100 Figure 2 – Simple Identity Management Profile ..... 10  
101 Figure 3 – Simple Identity Management Profile Implementation ..... 11  
102

103 **Tables**

104 Table 1 – Related Profiles ..... 8  
105 Table 2 – Class Requirements: Simple Identity Management Profile ..... 12  
106 Table 3 – DCIM\_Account - Operations ..... 14  
107 Table 4 – DCIM\_Account - Properties ..... 15  
108 Table 5 – DCIM\_EnabledLogicalElementCapabilities - Operations ..... 15  
109 Table 6 – DCIM\_EnabledLogicalElementCapabilities - Properties ..... 16  
110 Table 7 – DCIM\_LocalUserIdentity - Operations ..... 16  
111 Table 8 – DCIM\_LocalUserIdentity – Properties ..... 17  
112 Table 9 – DCIM\_LANIdentity - Operations ..... 17  
113 Table 10 – DCIM\_LANIdentity – Properties ..... 17  
114 Table 11 – DCIM\_SerialIdentity - Operations ..... 18  
115 Table 12 – DCIM\_SerialIdentity – Properties ..... 18  
116 Table 13 – DCIM\_CLPIdentity - Operations ..... 19  
117 Table 14 – DCIM\_CLPIdentity – Properties ..... 19  
118 Table 15 – DCIM\_LocalUserAccountManagementService - Operations ..... 20  
119 Table 16 – DCIM\_LocalUserAccountManagementService - Properties ..... 20  
120 Table 17 – DCIM\_IPMIAccountManagementService - Operations ..... 21  
121 Table 18 – DCIM\_IPMIAccountManagementService - Properties ..... 22  
122 Table 19 – DCIM\_CLPAccountManagementService - Operations ..... 23  
123 Table 20 – DCIM\_CLPAccountManagementService - Properties ..... 23  
124 Table 21 – DCIM\_LocalUserAccountMangementCapabilities - Operations ..... 24  
125 Table 22 – DCIM\_LocalUserAccountMangementCapabilities - Properties ..... 24  
126 Table 23 – DCIM\_IPMICLPAccountMangementCapabilities - Operations ..... 25  
127 Table 24 – DCIM\_IPMICLPAccountMangementCapabilities - Properties ..... 25  
128 Table 25 – DCIM\_RegisteredProfile - Operations ..... 25  
129 Table 26 – DCIM\_RegisteredProfile ..... 26  
130 Table 27 – DCIM\_LCRegisteredProfile - Operations ..... 26  
131 Table 28 – DCIM\_LCRegisteredProfile ..... 27  
132 Table 31 – DCIM\_Account.RequestStateChange() Method: Standard Messages ..... 28  
133 Table 32 – Privilege and License Requirements ..... 30

134

# 135 1 Scope

136 The DCIM Simple Identity Management Profile describes the properties and interfaces for executing  
137 system management tasks related to the management of accounts and identities. The profile  
138 standardizes and aggregates the description for the platform's basic properties into a system view  
139 representation and provides static methodology for the clients to query the system views without  
140 substantial traversal of the model.

# 141 2 Normative References

142 Refer to the following documents for more information.

143 **NOTE:** For dated references, only the edition cited applies. For undated references, the latest edition of  
144 the referenced document (including any amendments) applies.

- 145 • DMTF DSP1018, *Simple Identity Management 1.0.0*
- 146 • DMTF DSP1033, *Profile Registration Profile 1.0.0*
- 147 • DMTF DSP0226, *Web Services for Management (WS-Management) Specification 1.1.0*
- 148 • DMTF DSP0227, *WS-Management CIM Binding Specification 1.0.0*
- 149 • *Dell Lifecycle Controller Best Practices Guide 1.0*,  
150 [http://en.community.dell.com/techcenter/extras/m/white\\_papers/20066173.aspx](http://en.community.dell.com/techcenter/extras/m/white_papers/20066173.aspx)
- 151 • *Dell WSMAN Licenses and Privileges 1.0*
- 152 • Dell Tech Center MOF Library:
  - 153 ○ <http://www.delltechcenter.com/page/DCIM.Library.MOF>
- 154 • Related Managed Object Format (MOF) files:
  - 155 ○ DCIM\_Account.mof
  - 156 ○ DCIM\_AccountCapabilities.mof
  - 157 ○ DCIM\_AccountOnSystem.mof
  - 158 ○ DCIM\_AssignedAcctIdent.mof
  - 159 ○ DCIM\_EnabledLogicalElementCapabilities.mof
  - 160 ○ DCIM\_LocalUserElementCapabilities.mof
  - 161 ○ DCIM\_LocalUserIdentity.mof
  - 162 ○ DCIM\_LocalUserServiceAffectsIdentity.mof
  - 163 ○ DCIM\_LANIdentity.mof
  - 164 ○ DCIM\_SerialIdentity.mof
  - 165 ○ DCIM\_CLPIdentity.mof
  - 166 ○ DCIM\_CLPServiceAffectsIdentity.mof
  - 167 ○ DCIM\_LocalUserAccountManagementService.mof
  - 168 ○ DCIM\_IPMIAccountManagementService.mof
  - 169 ○ DCIM\_IPMICLPElementCapabilities.mof
  - 170 ○ DCIM\_IPMIServiceAffectsIdentity.mof
  - 171 ○ DCIM\_CLPAccountManagementService.mof
  - 172 ○ DCIM\_LocalUserAccountManagementCapabilities.mof
  - 173 ○ DCIM\_IPMICLPAccountManagementCapabilities.mof
  - 174 ○ DCIM\_SPHostedSIMPSERVICE.mof

- 175 ○ DCIM\_ElementConformsToProfile.mof
- 176 ○ DCIM\_RegisteredProfile.mof
- 177 ○ DCIM\_LCElementConformsToProfile.mof
- 178 ○ DCIM\_LCRegisteredProfile.mof

## 179 **3 Terms and Definitions**

180 For the purposes of this document, the following terms and definitions apply.

### 181 **3.1**

182 **can** - Used for statements of possibility and capability, whether material, physical, or causal.

### 183 **3.2**

184 **cannot** - Used for statements of possibility and capability, whether material, physical, or causal.

### 185 **3.3**

186 **conditional** - Indicates requirements to be followed strictly in order to conform to the document when the  
187 specified conditions are met.

### 188 **3.4**

189 **mandatory** - Indicates requirements to be followed strictly in order to conform to the document and from  
190 which no deviation is permitted.

### 191 **3.5**

192 **may** - Indicates a course of action permissible within the limits of the document.

### 193 **3.6**

194 **need not** - Indicates a course of action permissible within the limits of the document.

### 195 **3.7**

196 **optional** - Indicates a course of action permissible within the limits of the document.

### 197 **3.8**

198 **referencing profile** - Indicates a profile that owns the definition of this class and can include a reference  
199 to this profile in its "Related Profiles" table.

### 200 **3.9**

201 **shall** - Indicates requirements to be followed strictly in order to conform to the document and from which  
202 no deviation is permitted

### 203 **3.10**

204 **shall not** – Indicates requirements to be followed strictly in order to conform to the document and from  
205 which no deviation is permitted.

### 206 **3.11**

207 **should** – Indicates that among several possibilities, one is recommended as particularly suitable, without  
208 mentioning or excluding others, or that a certain course of action is preferred but not necessarily required.

209 **3.12**  
210 **should not** – Indicates that a certain possibility or course of action is deprecated but not prohibited.

211 **3.13**  
212 **Interop Namespace: root/interop**

213 Interop Namespace: root/interop is where instrumentation instantiates classes to advertise its capabilities  
214 for client discovery.

215 **3.14**  
216 **Implementation Namespace: root/dcim**

217 Implementation Namespace: root/dcim is where instrumentation instantiates classes relevant to executing  
218 core management tasks.

219 **3.15**  
220 **ENUMERATE** – Refers to WS-MAN **ENUMERATE** operation as described in Section 8.2 of  
221 DSP0226\_V1.1 and Section 9.1 of DSP0227\_V1.0

222 **3.16**  
223 **GET** – Refers to WS-MAN **GET** operation as defined in Section 7.3 of DSP00226\_V1.1 and Section  
224 7.1 of DSP0227\_V1.0

225

## 226 **4 Symbols and Abbreviated Terms**

227 **4.1**  
228 **CIM** - Common Information Model

229 **4.2**  
230 **iDRAC** - integrated Dell Remote Access Controller – management controller for blades and monolithic  
231 servers

232 **4.3**  
233 **CMC** - Chassis Manager Controller – management controller for the modular chassis

234 **4.4**  
235 **RAC** - Remote Access Controller – management controller or service processor  
236

## 237 **5 Synopsis**

238 **Profile Name:** System Info

239 **Version:** 1.0.0

240 **Organization:** Dell

241 **CIM Schema Version:** 2.26 Experimental

242 **Dell Schema Version:** 1.0.0

- 243 **Interop Namespace:** root/interop
- 244 **Implementation Namespace:** root/dcim
- 245 **Central Class:** DCIM\_LocalUserAccountManagementService, DCIM\_IPMIAccountManagementService,  
246 and DCIM\_CLPAccountManagementService
- 247 **Scoping Class:** DCIM\_ComputerSystem
- 248 The Dell Simple Identity Management Profile is a component profile that contains the Dell specific  
249 implementation requirements for system view.
- 250 DCIM\_LocalUserAccountManagementService, DCIM\_IPMIAccountManagementService, and  
251 DCIM\_CLPAccountManagementService shall be the Central Classes.
- 252 Table 1 identifies profiles that are related to this profile.

253

**Table 1 – Related Profiles**

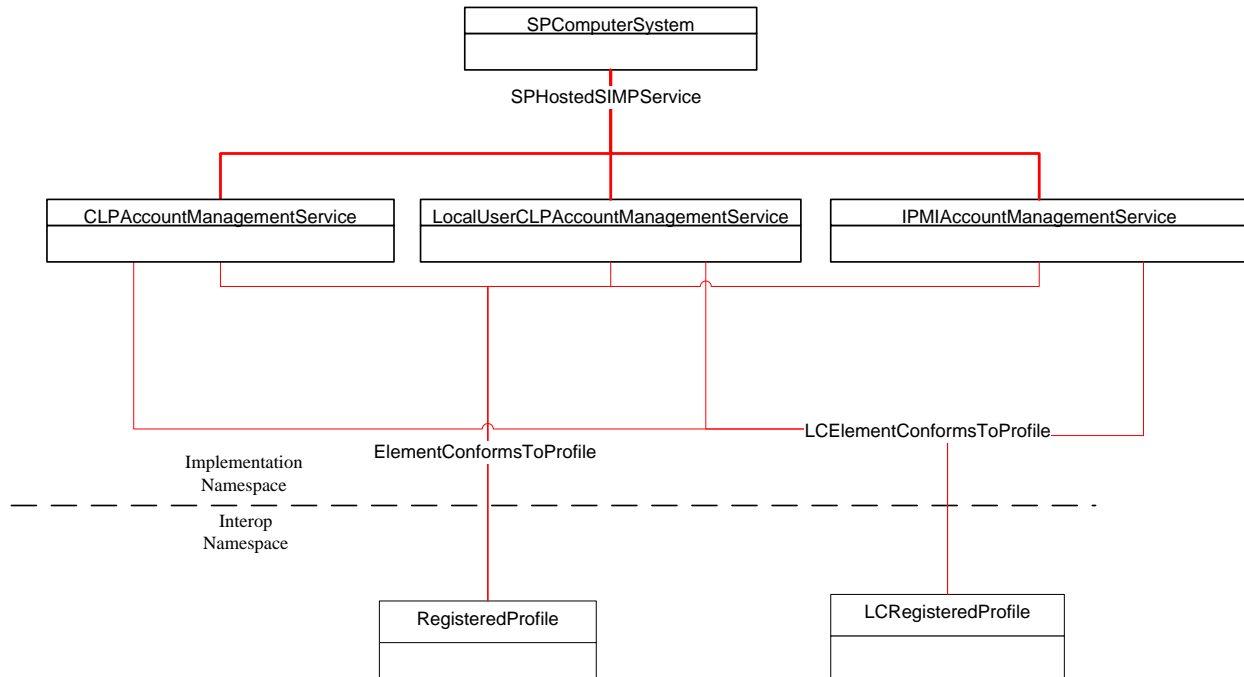
Profile Name	Organization	Version	Relationship
Simple Identity Management	DMTF	1.0	Specializes
Profile Registration	DCIM	1.0	Reference





264 's support of this profile, SimpleIdentityManagementProfile is instantiated in the Implementation  
 265 Namespace: root/dcim. SimpleIdentityManagementProfile describes the information about the  
 266 implemented profile: most importantly, the name and version of the profile and the organization name that  
 267 produced the profile.

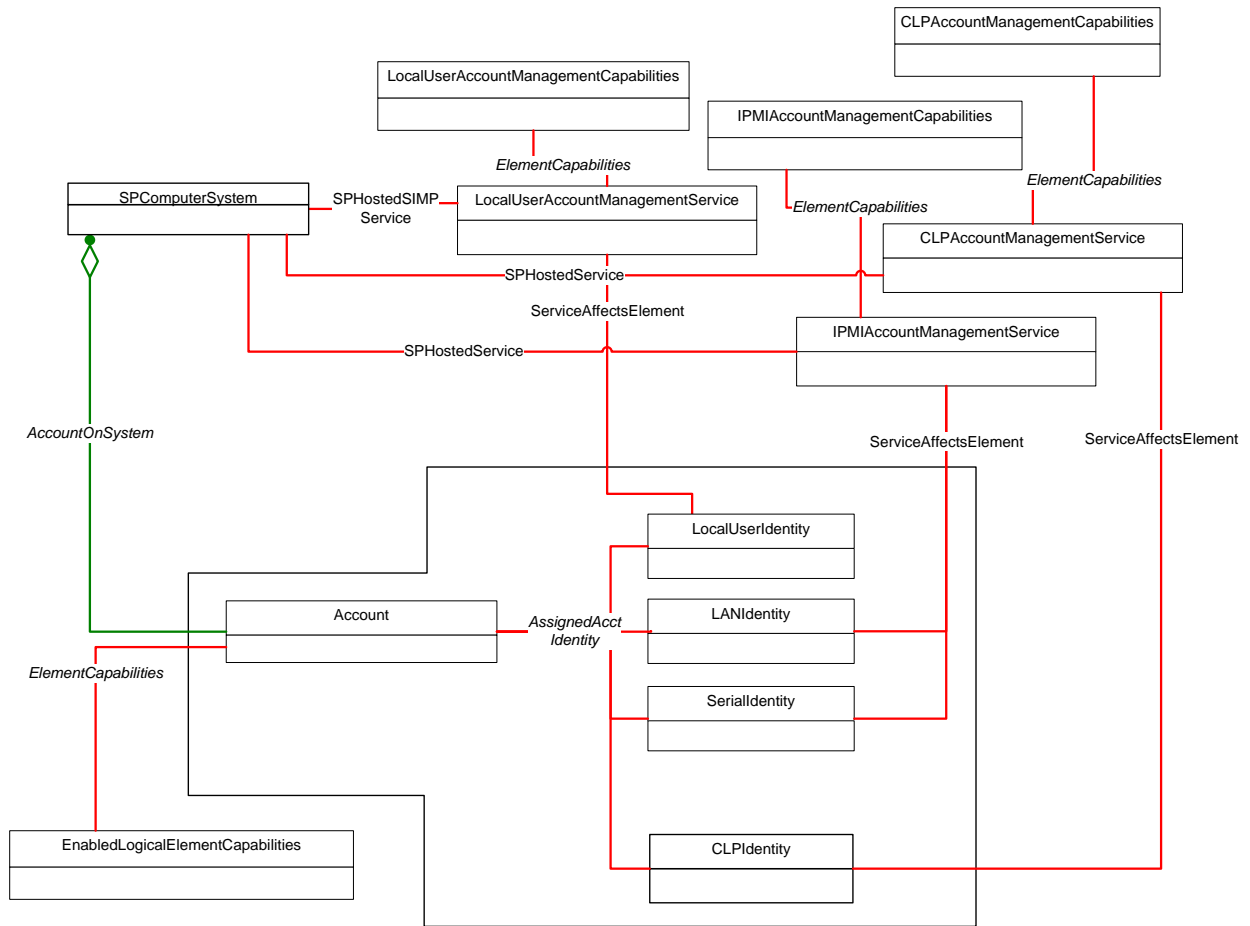
268



269

270

**Figure 2 – Simple Identity Management Profile**



271

272

**Figure 3 – Simple Identity Management Profile Implementation**

273 **7 Implementation Description**

274 This section describes the requirements and guidelines for implementing the Dell Simple Identity  
 275 Management Profile.

276 **Table 2 – Class Requirements: Simple Identity Management Profile**

Element Name	Requirement	Description
<b>Classes</b>		
DCIM_Account	Mandatory	The class shall be implemented in the <i>Implementation Namespace: root/dcim</i> . See section 7.1.
DCIM_AccountCapabilities	Mandatory	The class shall be implemented in the <i>Implementation Namespace: root/dcim</i> . See section 7.1 and 7.2.
DCIM_AccountOnSystem	Mandatory	The class shall be implemented in the <i>Implementation Namespace: root/dcim</i> . See section 7.1.
DCIM_AssignedAcctIdent	Mandatory	The class shall be implemented in the <i>Implementation Namespace: root/dcim</i> . See section 7.1, 7.3, 7.4, 7.5 and 7.6.
DCIM_EnabledLogicalElementCapabilities	Mandatory	The class shall be implemented in the <i>Implementation Namespace: root/dcim</i> . See section 7.2.
DCIM_LocalUserElementCapabilities	Mandatory	The class shall be implemented in the <i>Implementation Namespace: root/dcim</i> . See section 7.1 and 7.10.
DCIM_LocalUserIdentity	Mandatory	The class shall be implemented in the <i>Implementation Namespace: root/dcim</i> . See section 7.3.
DCIM_LocalUserServiceAffectsIdentity	Mandatory	The class shall be implemented in the <i>Implementation Namespace: root/dcim</i> . See section 7.3 and 7.7.
DCIM_LANIdentity	Mandatory	The class shall be implemented in the <i>Implementation Namespace: root/dcim</i> . See section 7.4.
DCIM_SerialIdentity	Mandatory	The class shall be implemented in the <i>Implementation Namespace: root/dcim</i> . See section 7.5.
DCIM_CLPIdentity	Mandatory	The class shall be implemented in the <i>Implementation Namespace: root/dcim</i> . See section 7.6.
DCIM_CLPServiceAffectsIdentity	Mandatory	The class shall be implemented in the <i>Implementation Namespace: root/dcim</i> . See section 7.6 and 7.9 .
DCIM_LocalUserAccountManagementService	Mandatory	The class shall be implemented in the <i>Implementation Namespace: root/dcim</i> . See section 7.7.
DCIM_IPMIAccountManagementService	Mandatory	The class shall be implemented in the <i>Implementation Namespace: root/dcim</i> . See section 7.8.

Element Name	Requirement	Description
DCIM_IPMICLPElementCapabilities	Mandatory	The class shall be implemented in the <i>Implementation Namespace: root/dcim</i> . See section 7.8, 7.9 and 7.10.
DCIM_IPMIServiceAffectsIdentity	Mandatory	The class shall be implemented in the <i>Implementation Namespace: root/dcim</i> . See section 7.4, 7.5 and 7.8.
DCIM_CLPAccountManagementService	Mandatory	The class shall be implemented in the <i>Implementation Namespace: root/dcim</i> . See section 7.9.
DCIM_LocalUserAccountManagementCapabilities	Mandatory	The class shall be implemented in the <i>Implementation Namespace: root/dcim</i> . See section 7.10.
DCIM_IPMICLPAccountManagementCapabilities	Mandatory	The class shall be implemented in the <i>Implementation Namespace: root/dcim</i> . See section 7.11.
DCIM_SPHostedSIMPSERVICE	Mandatory	The class shall be implemented in the <i>Implementation Namespace: root/dcim</i> . See section 7.7, 7.8 and 7.9.
DCIM_ElementConformsToProfile	Mandatory	The class shall be implemented in both the <i>Interop Namespace: root/interop</i> and <i>Implementation Namespace: root/dcim</i> . See section 7.12.
DCIM_RegisteredProfile	Mandatory	The class shall be implemented in the <i>Interop Namespace: root/interop</i> . See section 7.12.
DCIM_LCElementConformsToProfile	Mandatory	The class shall be implemented in both the <i>Interop Namespace: root/interop</i> and <i>Implementation Namespace: root/dcim</i> . See section 7.13.
DCIM_LCRegisteredProfile	Mandatory	The class shall be implemented in the <i>Interop Namespace: root/interop</i> . See section 7.13.
<b>Indications</b>		
None defined in this profile		

278 **7.1 DCIM\_Account - Local Account**

279 This section describes the implementation for the DCIM\_Account class describes local RAC account.

280 This class shall be instantiated in the Implementation Namespace: root/dcim.

281 The DCIM\_AccountOnSystem association shall reference DCIM\_Account instances and the  
282 DCIM\_SPCoMputerSystem instance.

283 DCIM\_AssignedAcctIdent association shall reference DCIM\_Account instance and  
284 DCIM\_LocalUserIdentity, DCIM\_LANIdentity, DCIM\_SerialIdentity, DCIM\_CLPIdentity instances.

285 DCIM\_AccountCapabilities association shall reference DCIM\_Account instance and  
286 DCIM\_EnabledLogicalElementCapabilities instance.

287 **7.1.1 Resource URIs for WinRM®**

288 The class Resource URI shall be "http://schemas.dell.com/wbem/wscim/1/cim-  
289 schema/2/DCIM\_Account?\_\_cimnamespace=root/dcim"

290 The key property shall be the SystemCreationClassName, SystemName, CreationClassName, and  
291 Name.

292 The instance Resource URI for DCIM\_ Account instance shall be:  
293 "http://schemas.dell.com/wbem/wscim/1/cim-schema/2/DCIM\_  
294 Account?\_\_cimnamespace=root/dcim+SystemCreationClassName=DCIM\_SPCoMputerSystem+System  
295 Name=systemmc+CreationClassName=DCIM\_Account+Name=iDRAC.Embedded.1#Users.<N>"

296 **7.1.2 Operations**

297 The following table lists the operations implemented on DCIM\_ Account.

298 **Table 3 – DCIM\_Account - Operations**

Operation Name	Requirements	Required Input
Get	Mandatory	Instance URI
Enumerate	Mandatory	Class URI
Set	Mandatory	Instance URI Note: Set operation may modify only the UserID and UserPassword properties.
Invoke	Mandatory	Instance URI

299 **7.1.3 Class Properties**

300 The following table details the implemented properties for DCIM\_Account instance representing RAC  
301 user account information. There shall be 16 accounts. The "Requirements" column shall denote whether  
302 the property is implemented (for requirement definitions, see section 3). The "Additional Requirements"  
303 column shall denote either possible values for the property, or requirements on the value formulation.  
304

**Table 4 – DCIM\_Account - Properties**

Property Name	Requirements	Type	Additional Requirement
SystemCreationClassName	Mandatory	string	The property value shall be "DCIM_SPComputerSystem".
SystemName	Mandatory	string	The property value shall be "systemmc".
CreationClassName	Mandatory	string	This property value shall be "DCIM_Account".
Name	Mandatory	string	The property value shall be the "iDRAC.Embedded.1#Users.<N>" where <N> is integer from 1 to 16.
UserID	Mandatory	string	The user name shall be a string 16 characters maximum length.
UserPassword[]	Mandatory	string	A blank array if password is configured; NULL when account is not configured/disabled.
OrganizationName[]	Mandatory	string	This property shall have a value of "DCIM".
ElementName	Mandatory	string	This property shall have a value of "DCIM Account".
RequestedState	Mandatory	uint16	This property shall have a value of 0 (Unknown).
EnabledState	Mandatory	uint16	The property value shall be either 2(Enabled) or 3(Disabled) .

**306 7.2 DCIM\_EnabledLogicalElementCapabilities – Account Capabilities**

307 This section describes the implementation for the DCIM\_EnabledLogicalElementCapabilities class.

308 DCIM\_AccountCapabilities association shall reference DCIM\_Account instance and  
309 DCIM\_EnabledLogicalElementCapabilities instance.

310 This class shall be instantiated in the Implementation Namespace: root/dcim.

**311 7.2.1 Resource URIs for WinRM®**

312 The class Resource URI shall be "http://schemas.dell.com/wbem/wscim/1/cim-schema/2/DCIM\_  
313 EnabledLogicalElementCapabilities?\_\_cimnamespace=root/dcim"

314 The key property shall be the InstanceID.

315 The instance Resource URI for DCIM\_SystemInteger instance shall be:  
316 "http://schemas.dell.com/wbem/wscim/1/cim-  
317 schema/2/DCIM\_EnabledLogicalElementCapabilities?\_\_cimnamespace=root/dcim+InstanceID=DCIM\_Enabl  
318 edLogicalElementCapabilities:1"

**319 7.2.2 Operations**

320 The following table lists the operations implemented on DCIM\_EnabledLogicalElementCapabilities.

**Table 5 – DCIM\_EnabledLogicalElementCapabilities - Operations**

Operation Name	Requirements	Required Input
Get	Mandatory	Instance URI
Enumerate	Mandatory	Class URI

323 **7.2.3 Class Properties**

324 **Table 6 – DCIM\_EnabledLogicalElementCapabilities - Properties**

Property Name	Type	Requirement	Additional Requirement
InstanceID	string	Mandatory	This property shall have a value of "DCIM_EnabledLogicalElementCapabilities:1"
ElementName	string	Mandatory	This property shall have a value of "Account Capabilities"
RequestedStatesSupported[]	uint16	Mandatory	The property value shall be an array of [2(Enabled), 3(Disabled)]
ElementNameEditSupported	boolean	Mandatory	This property shall have a value of FALSE.
MaxElementNameLen	uint16	Mandatory	This property shall have a value of 0.

325 **7.3 DCIM\_LocalUserIdentity - Local User’s General Security Principal**

326 This section describes the implementation for the DCIM\_LocalUserIdentity class.

327 This class shall be instantiated in the Implementation Namespace: root/dcim.

328 DCIM\_AssignedAcctIdent association shall reference DCIM\_LocalUserIdentity instance and DCIM\_Account  
329 instance.

330 DCIM\_LocalUserServiceAffectsIdentity shall reference DCIM\_LocalUserIdentity instance and the  
331 DCIM\_LocalUserAccountManagementService instance.

332 **7.3.1 Resource URIs for WinRM®**

333 The class Resource URI shall be "http://schemas.dell.com/wbem/wscim/1/cim-schema/2/  
334 DCIM\_LocalUserIdentity?\_\_cimnamespace=root/dcim"

335 The key property shall be the InstanceID.

336 The instance Resource URI for DCIM\_SystemEnumeration instance shall be:

337 "http://schemas.dell.com/wbem/wscim/1/cim-schema/2/

338 DCIM\_LocalUserIdentity?\_\_cimnamespace=root/dcim+InstanceID=DCIM:LocalAccount:Identity:<N>"

339 **7.3.2 Operations**

340 The following table lists the operations implemented on DCIM\_LocalUserIdentity.

341 **Table 7 – DCIM\_LocalUserIdentity - Operations**

Operation Name	Requirements	Required Input
Get	Mandatory	Instance URI
Enumerate	Mandatory	Class URI

342



343 **7.3.3 Class Properties**

344 **Table 8 – DCIM\_LocalUserIdentity – Properties**

Properties	Type	Requirement	Additional Requirements
InstanceID	string	Mandatory	The property value shall be "DCIM:LocalAccount:Identity:<N>", where <N> is from 1 to 16.
ElementName	String	Mandatory	This property shall have a value of "Local User Identity".

345 **7.4 DCIM\_LANIdentity – Local User’s IPMI over LAN Security Principal**

346 This section describes the implementation for the DCIM\_LANIdentity class.

347 This class shall be instantiated in the Implementation Namespace: root/dcim.

348 DCIM\_AssignedAcctIdent association shall reference DCIM\_LANIdentity instance and DCIM\_Account  
349 instance.

350 DCIM\_IPMIServiceAffectsIdentity shall reference the DCIM\_IPMIAccountManagementService instance and  
351 DCIM\_LANIdentity instance.

352 **7.4.1 Resource URIs for WinRM®**

353 The class Resource URI shall be "http://schemas.dell.com/wbem/wscim/1/cim-schema/2/  
354 DCIM\_LANIdentity?\_\_cimnamespace=root/dcim"

355 The key property shall be the InstanceID.

356 The instance Resource URI for DCIM\_LANIdentity instance shall be:  
357 "http://schemas.dell.com/wbem/wscim/1/cim-schema/2/  
358 DCIM\_LANIdentity?\_\_cimnamespace=root/dcim+InstanceID=DCIM:LANUser:Identity:<N>"

359 **7.4.2 Operations**

360 The following table lists the operations implemented on DCIM\_LANIdentity.

361 **Table 9 – DCIM\_LANIdentity - Operations**

Operation Name	Requirements	Required Input
Get	Mandatory	Instance URI
Enumerate	Mandatory	Class URI

362 **7.4.3 Class Properties**

363 **Table 10 – DCIM\_LANIdentity – Properties**

Properties	Type	Requirement	Additional Requirements
InstanceID	string	Mandatory	The property value shall be "DCIM:LANUser:Identity:<N>" where N is 1 to 16.
ElementName	String	Mandatory	This property shall have a value of "LAN Identity"

364

## 365 7.5 DCIM\_SerialIdentity – Local User’s IPMI Serial Security Principal

366 This section describes the implementation for the DCIM\_SerialIdentity class.

367 This class shall be instantiated in the Implementation Namespace: root/dcim.

368 DCIM\_AssignedAcctIdent association shall reference DCIM\_SerialIdentity instance and DCIM\_Account  
369 instance.

370 DCIM\_IPMIServiceAffectsIdentity shall reference the DCIM\_IPMIAccountManagementService instance and  
371 DCIM\_SerialIdentity instance.

### 372 7.5.1 Resource URIs for WinRM®

373 The class Resource URI shall be “http://schemas.dell.com/wbem/wscim/1/cim-schema/2/  
374 DCIM\_SerialIdentity?\_\_cimnamespace=root/dcim”

375 The key property shall be the InstanceID.

376 The instance Resource URI for DCIM\_SerialIdentity instance shall be:

377 “http://schemas.dell.com/wbem/wscim/1/cim-schema/2/

378 DCIM\_SerialIdentity?\_\_cimnamespace=root/dcim+InstanceID=DCIM:SerialUser:Identity:<N>”

### 379 7.5.2 Operations

380 The following table lists the operations implemented on DCIM\_SerialIdentity.

381 **Table 11 – DCIM\_SerialIdentity - Operations**

Operation Name	Requirements	Required Input
Get	Mandatory	Instance URI
Enumerate	Mandatory	Class URI

### 382 7.5.3 Class Properties

383 **Table 12 – DCIM\_SerialIdentity – Properties**

Properties	Type	Requirement	Additional Requirements
InstanceID	string	Mandatory	The property value shall be “DCIM:SerialUser:Identity:<N>” where <N> is 1 to 16.
ElementName	string	Mandatory	This property shall have a value of “Serial Identity”

384

385

386 **7.6 DCIM\_CLPIdentity – Local User’s CLP Security Principal**

387 This section describes the implementation for the DCIM\_CLPIdentity class.

388 This class shall be instantiated in the Implementation Namespace: root/dcim.

389 DCIM\_AssignedAcctIdent association shall reference DCIM\_CLPIdentity instance and DCIM\_Account  
390 instance.

391 DCIM\_CLPServiceAffectsIdentity association shall reference DCIM\_CLPIdentity instance and the  
392 DCIM\_CLPAccountManagementService.

393 **7.6.1 Resource URIs for WinRM®**

394 The class Resource URI shall be “http://schemas.dell.com/wbem/wscim/1/cim-schema/2/  
395 DCIM\_CLPIdentity?\_\_cimnamespace=root/dcim”

396 The key property shall be the InstanceID.

397 The instance Resource URI for DCIM\_CLPIdentity instance shall be:  
398 “http://schemas.dell.com/wbem/wscim/1/cim-schema/2/  
399 DCIM\_CLPIdentity?\_\_cimnamespace=root/dcim+InstanceID=DCIM:CLP:Identity:<N>”

400 **7.6.2 Operations**

401 The following table lists the operations implemented on DCIM\_CLPIdentity.

402 **Table 13 – DCIM\_CLPIdentity - Operations**

Operation Name	Requirements	Required Input
Get	Mandatory	Instance URI
Enumerate	Mandatory	Class URI

403

404 **7.6.3 Class Properties**

405 **Table 14 – DCIM\_CLPIdentity – Properties**

Properties	Type	Requirement	Additional Requirements
InstanceID	string	Mandatory	The property value shall be “DCIM:CLP:Identity:<N>”, where <N> is 1 to 16.
ElementName	string	Mandatory	This property shall have a value of “CLP Identity”.

406

407

408 **7.7 DCIM\_LocalUserAccountManagementService - Local User Account**  
 409 **Management Service**

410 This section describes the implementation for the DCIM\_LocalUserAccountManagementService class.

411 DCIM\_LocalUserElementCapabilities association shall reference the  
 412 DCIM\_LocalUserAccountManagementService and the DCIM\_LocalUserAccountManagementCapabilities  
 413 instance.

414 DCIM\_LocalUserServiceAffectsIdentity association shall reference DCIM\_LocalUserIdentity instance and  
 415 the DCIM\_LocalUserAccountManagementService instance.

416 DCIM\_SPHostedSIMPSERVICE association shall reference the DCIM\_LocalUserAccountManagementService  
 417 instance and the DCIM\_SPCOMPUTERSYSTEM.

418 This class shall be instantiated in the Implementation Namespace: root/dcim.

419 **7.7.1 Resource URIs for WinRM®**

420 The class Resource URI shall be "http://schemas.dell.com/wbem/wscim/1/cim-schema/2/  
 421 DCIM\_LocalUserAccountManagementService?\_\_cimnamespace=root/dcim"

422 The key property shall be the SystemCreationClassName, SystemName, CreationClassName, and  
 423 Name.

424 The instance Resource URI for DCIM\_LocalUserAccountManagementService instance shall be:  
 425 "http://schemas.dell.com/wbem/wscim/1/cim-  
 426 schema/2/DCIM\_LocalUserAccountManagementService?\_\_cimnamespace=root/dcim+SystemCreationCl  
 427 assName=DCIM\_SPCOMPUTERSYSTEM+SystemName=systemmc+CreationClassName=DCIM\_LocalUser  
 428 AccountManagementService+Name=DCIM:LocalUserAccountManagementService"

429 **7.7.2 Operations**

430 The following table lists the operations implemented on DCIM\_LocalUserAccountManagementService.

431 **Table 15 – DCIM\_LocalUserAccountManagementService - Operations**

Operation Name	Requirements	Required Input
Get	Mandatory	Instance URI
Enumerate	Mandatory	Class URI

432 **7.7.3 Class Properties**

433 The following table details the implemented properties for DCIM\_LocalUserAccountManagementService  
 434 instance representing. The "Requirements" column shall denote whether the property is implemented (for  
 435 requirement definitions, see section 3). The "Additional Requirements" column shall denote either  
 436 possible values for the property, or requirements on the value formulation.

437 **Table 16 – DCIM\_LocalUserAccountManagementService - Properties**

Property Name	Type	Requirements	Additional Requirement
SystemCreationClassName	string	Mandatory	The property value shall be "DCIM_SPCOMPUTERSYSTEM".
SystemName	string	Mandatory	The property value shall be "systemmc".
CreationClassName	string	Mandatory	The property value shall be "DCIM:LocalUserAccountManagementService".

Property Name	Type	Requirements	Additional Requirement
Name	string	Mandatory	The property value shall be "DCIM LocalUserAccountManagementService".
RequestedState	uint16	Mandatory	This property value shall be 12 (not applicable).
EnabledState	uint16	Mandatory	This property value shall be 2 (Enabled).
ElementName	string	Mandatory	The property value shall be "Local User Account Management Service".
CurrentAuthenticationMethod	uint16	Mandatory	The property shall represent the local authentication methodologies used: <ul style="list-style-type: none"> <li>• 0 - "Normal",</li> <li>• 1 - "SmartCard without CRL",</li> <li>• 2 - "SmartCard with CRL",</li> <li>• 3 - "biometrics without CRL",</li> <li>• 4 - "biometrics with CRL"</li> </ul>

## 438 7.8 DCIM\_IPMIAccountManagementService - IPMI Account Management 439 Service

440 This section describes the implementation for the DCIM\_IPMIAccountManagementService class.

441 DCIM\_IPMICLPElementCapabilities association shall reference the DCIM\_IPMIAccountManagementService  
442 instance and the DCIM\_IPMICLPAccountMangementCapabilities instance.

443 DCIM\_IPMIServiceAffectsIdentity association shall reference the DCIM\_IPMIAccountManagementService  
444 instance and DCIM\_LANIdentity, DCIM\_SerialIdentity instances.

445 DCIM\_SPHostedSIMPSERVICE association shall reference the DCIM\_IPMIAccountManagementService  
446 instance and the DCIM\_SPCComputerSystem.

447 This class shall be instantiated in the Implementation Namespace: root/dcim.

### 448 7.8.1 Resource URIs for WinRM®

449 The class Resource URI shall be "http://schemas.dell.com/wbem/wscim/1/cim-schema/2/  
450 DCIM\_IPMIAccountManagementService?\_\_cimnamespace=root/dcim"

451 The key property shall be the SystemCreationClassName, SystemName, CreationClassName, and  
452 Name.

453 The instance Resource URI for DCIM\_IPMIAccountManagementService instance shall be:  
454 "http://schemas.dell.com/wbem/wscim/1/cim-schema/2/  
455 DCIM\_IPMIAccountManagementService?\_\_cimnamespace=root/dcim+SystemCreationClassName=DCI  
456 M\_SPCComputerSystem+SystemName=systemmc+CreationClassName=DCIM\_IPMIAccountManagemen  
457 tService+Name=DCIM IPMIAccountManagementService"

### 458 7.8.2 Operations

459 The following table lists the operations implemented on DCIM\_IPMIAccountManagementService.

460 **Table 17 – DCIM\_IPMIAccountManagementService - Operations**

Operation Name	Requirements	Required Input
Get	Mandatory	Instance URI
Enumerate	Mandatory	Class URI

461

462 **7.8.3 Class Properties**

463 The following table details the implemented properties for DCIM\_IPMIAccountManagementService  
 464 instance representing. The “Requirements” column shall denote whether the property is implemented (for  
 465 requirement definitions, see section 3). The “Additional Requirements” column shall denote either  
 466 possible values for the property, or requirements on the value formulation.

467 **Table 18 – DCIM\_IPMIAccountManagementService - Properties**

Property Name	Type	Requirements	Additional Requirement
SystemCreationClassName	string	Mandatory	The property value shall be “DCIM_SPCComputerSystem”.
SystemName	string	Mandatory	The property value shall be “systemmc”.
CreationClassName	string	Mandatory	The property value shall be “DCIM_IPMIAccountManagementService”.
Name	string	Mandatory	The property value shall be “DCIM IPMIAccountManagementService”.
RequestedState	uint16	Mandatory	This property value shall be 12 (not applicable).
EnabledState	uint16	Mandatory	The property value shall be 2 (Enabled).
ElementName	string	Mandatory	The property value shall be “IPMI Account Management Service”.

468 **7.9 DCIM\_CLPAccountManagementService - CLP Account Management**  
 469 **Service**

470 This section describes the implementation for the DCIM\_CLPAccountManagementService class.

471 DCIM\_IPMICLPElementCapabilities shall reference the DCIM\_CLPAccountManagementService instance and  
 472 the DCIM\_IPMICLPAccountMangementCapabilities instance.

473 DCIM\_CLPServiceAffectsIdentity association shall reference DCIM\_CLPIdentity instance and the  
 474 DCIM\_CLPAccountManagementService.

475 DCIM\_SPHostedSIMPSERVICE association shall reference the DCIM\_CLPAccountManagementService  
 476 instance and the DCIM\_SPCComputerSystem.

477 This class shall be instantiated in the Implementation Namespace: root/dcim.

478 **7.9.1 Resource URIs for WinRM®**

479 The class Resource URI shall be “http://schemas.dell.com/wbem/wscim/1/cim-schema/2/  
 480 DCIM\_CLPAccountManagementService?\_\_cimnamespace=root/dcim”

481 The key property shall be the SystemCreationClassName, SystemName, CreationClassName, and  
 482 Name.

483 The instance Resource URI for CLPAccountManagementService instance shall be:  
 484 “http://schemas.dell.com/wbem/wscim/1/cim-schema/2/ DCIM\_  
 485 CLPAccountManagementService?\_\_cimnamespace=root/dcim+SystemCreationClassName=DCIM\_SPC  
 486 omputerSystem+SystemName=systemmc+CreationClassName=DCIM\_CLPAccountManagementService  
 487 +Name=DCIM CLPAccountManagementService”

488 **7.9.2 Operations**

489 The following table lists the operations implemented on DCIM\_CLPAccountManagementService.

490

**Table 19 – DCIM\_CLPAccountManagementService - Operations**

Operation Name	Requirements	Required Input
Get	Mandatory	Instance URI
Enumerate	Mandatory	Class URI

491 **7.9.3 Class Properties**

492 The following table details the implemented properties for DCIM\_CLPAccountManagementService  
493 instance. The “Requirements” column shall denote whether the property is implemented (for requirement  
494 definitions, see section 3). The “Additional Requirements” column shall denote either possible values for  
495 the property, or requirements on the value formulation.

496

**Table 20 – DCIM\_CLPAccountManagementService - Properties**

Property Name	Type	Requirements	Additional Requirement
SystemCreationClassName	string	Mandatory	The property value shall be “DCIM_SPCComputerSystem”
SystemName	string	Mandatory	The property value shall be “systemmc”
CreationClassName	string	Mandatory	The property value shall be “DCIM_CLPAccountManagementService”
Name	string	Mandatory	The property value shall be “DCIM CLPAccountManagementService”
RequestedState	uint16	Mandatory	This property value shall be 12 (not applicable)
EnabledState	uint16	Mandatory	This property value shall be 2 (Enabled)
ElementName	string	Mandatory	This property value shall be “CLP Account Management Service ”

497 **7.10 DCIM\_LocalUserAccountMangementCapabilities - Local User Account**  
498 **Management Capabilities**

499 This section describes the implementation for the DCIM\_LocalUserAccountMangementCapabilities class.

500 DCIM\_LocalUserElementCapabilities association shall reference the  
501 DCIM\_LocalUserAccountManagementService and the DCIM\_LocalUserAccountManagementCapabilities  
502 instance.

503 This class shall be instantiated in the Implementation Namespace: root/dcim.

504 **7.10.1 Resource URIs for WinRM®**

505 The class Resource URI shall be “http://schemas.dell.com/wbem/wscim/1/cim-  
506 schema/2/DCIM\_LocalUserAccountMangementCapabilities?\_\_cimnamespace=root/dcim”

507 The key property shall be the InstanceID.

508 The instance Resource URI for DCIM\_LocalUserAccountMangementCapabilities instance shall be:  
509 “http://schemas.dell.com/wbem/wscim/1/cim-  
510 schema/2/DCIM\_LocalUserAccountMangementCapabilities?\_\_cimnamespace=root/dcim+InstanceID=DC  
511 IM:LocalUserAccountMangementCapabilities:1”

512 **7.10.2 Operations**

513 The following table lists the operations implemented on DCIM\_LocalUserAccountMangementCapabilities.

514

**Table 21 – DCIM\_LocalUserAccountMangementCapabilities - Operations**

Operation Name	Requirements	Required Input
Get	Mandatory	Instance URI
Enumerate	Mandatory	Class URI

515 **7.10.3 Class Properties**

516

**Table 22 – DCIM\_LocalUserAccountMangementCapabilities - Properties**

517

Property Name	Type	Requirement	Additional Requirements
InstanceID	string	Mandatory	This property shall have a value of "DCIM:LocalUserAccountMangementCapabilities:1"
ElementName	string	Mandatory	This property shall have a value of "Local User Account Mangement Capabilities"
OperationsSupported[]	uint16	Mandatory	This property shall have a value of 3 (Modify)
ElementNameEditSupported	boolean	Mandatory	This property shall have a value of FALSE
MaxElementNameLen	uint16	Mandatory	This property shall have a value of 0
SupportedAuthenticationMethod	uint16	Mandatory	The property shall represent the local authentication methodology available: <ul style="list-style-type: none"> <li>• 0 - "Normal ,</li> <li>• 1 - "SmartCard without CRL",</li> <li>• 2 - "SmartCard with CRL",</li> <li>• 3 - "biometrics without CRL",</li> <li>• 4 - "biometrics with CRL"</li> </ul>

518 **7.11 DCIM\_IPMICLPAccountMangementCapabilities - IPMI/CLIP Account**  
519 **Management Capabilities**

520 This section describes the implementation for the DCIM\_IPMICLPAccountMangementCapabilities class.

521 DCIM\_IPMICLPElementCapabilities shall reference DCIM\_IPMICLPAccountMangementCapabilities instance  
522 and the DCIM\_CLPAccountManagementService, DCIM\_IPMIAccountManagementService instances.

523 This class shall be instantiated in the Implementation Namespace: root/dcim.

524 **7.11.1 Resource URIs for WinRM®**

525 The class Resource URI shall be "http://schemas.dell.com/wbem/wscim/1/cim-  
526 schema/2/DCIM\_IPMICLPAccountMangementCapabilities?\_\_cimnamespace=root/dcim"

527 The key property shall be the InstanceID.

528 The instance Resource URI for DCIM\_IPMICLPAccountMangementCapabilities instance shall be:  
529 "http://schemas.dell.com/wbem/wscim/1/cim-  
530 schema/2/DCIM\_IPMICLPAccountMangementCapabilities?\_\_cimnamespace=root/dcim+InstanceID=DCI  
531 M:IPMICLPAccountManagementCapabilities:1"

532



533 **7.11.2 Operations**

534 The following table lists the operations implemented on DCIM\_IPMICLPAccountMangementCapabilities.

535 **Table 23 – DCIM\_IPMICLPAccountMangementCapabilities - Operations**

Operation Name	Requirements	Required Input
Get	Mandatory	Instance URI
Enumerate	Mandatory	Class URI

536 **7.11.3 Class Properties**

537 **Table 24 – DCIM\_IPMICLPAccountMangementCapabilities - Properties**

538

Property Name	Type	Requirement	Requirement
InstanceID	string	Mandatory	The property value be "DCIM:IPMICLPAccountManagementCapabilities:1"
ElementName	string	Mandatory	The property value shall be of "IPMI/CLP Account Management Capabilities".
OperationsSupported[]	uint16	Mandatory	The property array shall contain value 3 (Modify).
ElementNameEditSupported	boolean	Mandatory	This property value shall be FALSE.
MaxElementNameLen	uint16	Mandatory	This property value shall be 0.

539 **7.12 DCIM\_RegisteredProfile - DMTF Simple Identity Management Profile Profile**  
540 **Registration**

541 This section describes the implementation for the DCIM\_RegisteredProfile class.

542 This class shall be instantiated in the Interop Namespace: root/interop.

543 The DCIM\_ElementConformsToProfile shall reference the DCIM\_RegisteredProfile instance.

544 **7.12.1 Resource URIs for WinRM®**

545 The class Resource URI shall be "http://schemas.dell.com/wbem/wscim/1/cim-  
546 schema/2/DCIM\_RegisteredProfile?\_\_cimnamespace=root/interop"

547 The key property shall be the InstanceID property.

548 The instance Resource URI shall be: "http://schemas.dell.com/wbem/wscim/1/cim-  
549 schema/2/DCIM\_RegisteredProfile?\_\_cimnamespace=root/interop+InstanceID=  
550 DCIM:SimpleIdentityRegisteredProfile:1"

551 **7.12.2 Operations**

552 The following table lists the operations implemented on for DCIM\_RegisteredProfile.

553 **Table 25 – DCIM\_RegisteredProfile - Operations**

Operation Name	Requirements	Required Input
Get	Mandatory	Instance URI
Enumerate	Mandatory	Class URI

554

555 **7.12.3 Class Properties**

556 The following table details the implemented properties for DCIM\_RegisteredProfile instance representing  
557 Simple Identity Management Profile implementation. The “Requirements” column shall denote whether  
558 the property is implemented (for requirement definitions, see section 3). The “Additional Requirements”  
559 column shall denote either possible values for the property, or requirements on the value formulation.

560 **Table 26 – DCIM\_RegisteredProfile**

Property Name	Type	Requirement	Additional Requirements
InstanceID	string	Mandatory	DCIM:SimpleIdentityRegisteredProfile:1
RegisteredName	string	Mandatory	This property shall have a value of "Simple Identity Management".
RegisteredVersion	string	Mandatory	This property shall have a value of "1.0.0".
RegisteredOrganization	uint16	Mandatory	This property shall have a value of 2(DMTF).
AdvertiseTypes[]	uint16	Mandatory	The property array shall have value [1 (Other), 1 (Other)].
AdvertiseTypeDescriptions[]	string	Mandatory	The property array shall have value ["WS-Identify", "Interop Namespace"]

561 **7.13 DCIM\_LCRegisteredProfile - DCIM Simple Identity Management Profile**  
562 **Profile Registration**

563 This section describes the implementation for the DCIM\_LCRegisteredProfile class.

564 This class shall be instantiated in the Interop Namespace: root/interop.

565 The DCIM\_LCElementConformsToProfile association shall reference the DCIM\_LCRegisteredProfile  
566 instance.

567 **7.13.1 Resource URIs for WinRM®**

568 The class Resource URI shall be "http://schemas.dell.com/wbem/wscim/1/cim-  
569 schema/2/DCIM\_LCRegisteredProfile?\_\_cimnamespace=root/interop"

570 The key property shall be the InstanceID property.

571 The instance Resource URI shall be: "http://schemas.dell.com/wbem/wscim/1/cim-  
572 schema/2/DCIM\_LCRegisteredProfile?\_\_cimnamespace=root/interop+InstanceID=  
573 DCIM:SimpleIdentityManagement:1.0.0"

574 **7.13.2 Operations**

575 The following table lists the operations implemented on for DCIM\_LCRegisteredProfile.

576 **Table 27 – DCIM\_LCRegisteredProfile - Operations**

Operation Name	Requirements	Required Input
Get	Mandatory	Instance URI
Enumerate	Mandatory	Class URI

577

578 **7.13.3 Class Properties**

579 The following table details the implemented properties for DCIM\_LCRegisteredProfile instance  
 580 representing Simple Identity Management Profile implementation. The “Requirements” column shall  
 581 denote whether the property is implemented (for requirement definitions, see section 3). The “Additional  
 582 Requirements” column shall denote either possible values for the property, or requirements on the value  
 583 formulation.

584 **Table 28 – DCIM\_LCRegisteredProfile**

Property Name	Type	Requirement	Additional Requirements
InstanceID	string	Mandatory	DCIM:SimpleIdentityManagement:1.0.0
RegisteredName	string	Mandatory	This property value shall be "Simple Identity Management".
RegisteredVersion	string	Mandatory	This property value shall be "1.0.0".
RegisteredOrganization	uint16	Mandatory	This property value shall be 1(Other)
OtherRegisteredOrganization	string	Mandatory	This property value shall be "DCIM"
AdvertiseTypes[]	uint16	Mandatory	The property array shall have value [1 (Other), 1 (Other)].
AdvertiseTypeDescriptions[]	string	Mandatory	The property array shall have value ["WS-Identify", "Interop Namespace"]
ProfileRequireLicense[]	string	Mandatory	This property array shall describe the required licenses for this profile.  If no license is required for the profile, the property shall have value NULL.
ProfileRequireLicenseStatus[]	string	Mandatory	This property array shall contain the status for the corresponding license in the same element index of the ProfileRequireLicense array property. Each array element shall contain: <ul style="list-style-type: none"> <li>• "LICENSED"</li> <li>• "NOT_LICENSED"</li> </ul> If no license is required for the profile, the property shall have value NULL.

585 **8 Methods**

586 This section details the requirements for supporting extrinsic methods for the CIM elements defined by  
 587 this profile.

588 **8.1 DCIM\_Account.RequestStateChange()**

589 The RequestStateChange() method shall be used to enable/disable the account represented by the  
 590 DCIM\_Account instance.

591 Return code values for the RequestStateChange() method are specified in Table 29 and parameters are  
 592 specified in Table 30. Invoking the RequestStateChange() method multiple times can result in the earlier  
 593 requests being overwritten or lost.

594 **Table 29 – DCIM\_Account.RequestStateChange()Method: Return Code Values**

595

Value	Description
0	Request was successfully executed.

Value	Description
2	Error occurred

596  
597

**Table 30 – DCIM\_Account.RequestStateChange() Method: Parameters**

Qualifiers	Name	Type	Description/Values
IN, REQ	RequestedState	uint16	Valid state values: <ul style="list-style-type: none"> <li>• 2 (Enabled)</li> <li>• 3 (Disabled)</li> </ul>
OUT	MessageID	string	Error Message ID may be used to look-up in the Dell Message registry files. For more information, see Error Message Registry.
OUT	Message	string	Error Message in English corresponding to MessageID is returned if the method fails to execute
OUT	MessageArguments[]	string	Substitution variables for dynamic error messages

598

599

**Table 31 – DCIM\_Account.RequestStateChange() Method: Standard Messages**

MessageID (OUT parameter)	Message	MessageArguments[]
USR102	Invalid parameter value for <parameter>	RequestedState
USR103	Missing parameter(s) <parameter>	RequestedState
USR104	The command failed	
USR105	The account is not configured	

## 600 **9 Use Cases**

601 See *Lifecycle Controller (LC) Integration Best Practices Guide*.

## 602 **10 CIM Elements**

603 No additional details specified.

604

605

606

607

608

## 609 **11 Privilege and License Requirement**

610 The following table describes the privilege and license requirements for the listed operations. For the  
611 detailed explanation of the privileges and licenses, refer to the Dell WSMAN Licenses and Privileges  
612 specification.

Table 32 – Privilege and License Requirements

Class and Method	Operation	User Privilege Required	Required License
DCIM_Account	ENUMERATE, GET	Login	None.
DCIM_Account.RequestStateChange()	INVOKE	Login, Configure Users	None.
DCIM_Account	SET	Login, Configure Users	None.
DCIM_AccountCapabilities	ENUMERATE, GET	Login	None.
DCIM_AccountOnSystem	ENUMERATE, GET	Login	None.
DCIM_AssignedAcctIdent	ENUMERATE, GET	Login	None.
DCIM_EnabledLogicalElementCapabilities	ENUMERATE, GET	Login	None.
DCIM_LocalUserElementCapabilities	ENUMERATE, GET	Login	None.
DCIM_LocalUserIdentity	ENUMERATE, GET	Login	None.
DCIM_LocalUserServiceAffectsIdentity	ENUMERATE, GET	Login	None.
DCIM_LANIdentity	ENUMERATE, GET	Login	None.
DCIM_SerialIdentity	ENUMERATE, GET	Login	None.
DCIM_CLPIdentity	ENUMERATE, GET	Login	None.
DCIM_CLPServiceAffectsIdentity	ENUMERATE, GET	Login	None.
DCIM_LocalUserAccountManagementService	ENUMERATE, GET	Login	None.
DCIM_IPMIAccountManagementService	ENUMERATE, GET	Login	None.
DCIM_IPMICLPElementCapabilities	ENUMERATE, GET	Login	None.
DCIM_IPMIServiceAffectsIdentity	ENUMERATE, GET	Login	None.
DCIM_CLPAccountManagementService	ENUMERATE, GET	Login	None.
DCIM_LocalUserAccountManagementCapabilities	ENUMERATE, GET	Login	None.
DCIM_IPMICLPAccountManagementCapabilities	ENUMERATE, GET	Login	None.
DCIM_SPHostedSIMPService	ENUMERATE, GET	Login	None.
DCIM_ElementConformsToProfile	ENUMERATE, GET	Login	None.
DCIM_RegisteredProfile	ENUMERATE, GET	Login	None.
DCIM_LCElementConformsToProfile	ENUMERATE, GET	Login	None.
DCIM_LCRegisteredProfile	ENUMERATE, GET	Login	None.