



Creating and updating iDRAC repository using DRM 2.0

This technical white paper describes about creating DRM repository using iDRAC inventory and update the repository using scheduled repository search option in DRM 2.0

Dell Engineering
December 2014

Revisions

Date	Description
December 2014	Initial release

THIS WHITE PAPER IS FOR INFORMATIONAL PURPOSES ONLY, AND MAY CONTAIN TYPOGRAPHICAL ERRORS AND TECHNICAL INACCURACIES. THE CONTENT IS PROVIDED AS IS, WITHOUT EXPRESS OR IMPLIED WARRANTIES OF ANY KIND.

© 2014 Dell Inc. All rights reserved. Reproduction of this material in any manner whatsoever without the express written permission of Dell Inc. is strictly forbidden. For more information, contact Dell.

Dell, the DELL logo, and the DELL badge are trademarks of Dell Inc. Other trademarks and trade names may be used in this document to refer to either the entities claiming the marks and names or their products. Dell disclaims any proprietary interest in the marks and names of others.



Table of contents

Revisions	2
Acknowledgements	4
Feedback	4
Executive summary	5
1 Introduction	6
2 Purpose and scope.....	7
3 Terminology.....	8
4 Creating and updating iDRAC Repository using DRM	9
4.1 Procedure to Create and update iDRAC repository using DRM	9
4.2 Create DRM repository using iDRAC inventory	10
5 Additional resources	32



Acknowledgements

This white paper was produced by the following members of the Dell Enterprise Engineering team:

Engineering: Palani Raja , Sindhu Murthy

Editor : Mainak Roy

Feedback

We encourage readers of this publication to provide feedback on the quality and usefulness of this by logging information on [DRM Techcenter](#).



Executive summary

Dell Repository Manager (DRM) is an application that facilitates IT Administrators to effortlessly plan and manage system updates. Dell Repository Manager enables to create custom software pools known as bundles and repositories of Dell Update Packages (DUPs). These bundles and repositories allow the deployment of multiple updates at once. Additionally, the Dell Repository Manager makes it easier to locate specific updates for a particular platform which saves time.



1 Introduction

Dell Repository Manager (DRM) is an application that allows IT Administrators to easily manage system updates. Dell Repository Manager provides a searchable interface used to create custom software collections known as bundles and repositories of Dell Update Packages (DUPs). These bundles and repositories allow for the deployment of multiple firmware updates at once.

A Dell Update Package (DUP) is a self-contained, executable in a standard package format that updates a software element on a Dell server such as the BIOS, a device driver, firmware, and other similar software updates.



2 Purpose and scope

The purpose of this white paper is to guide the customers in updating servers with the latest drivers, firmware and application regularly, which is discovered by iDRAC inventory using Dell Repository Manager scheduled repository search option.

This paper covers how to use Dell Repository Manager (DRM) to create a custom repository of updates, by using the system's inventory provided by iDRAC.



3 Terminology

The following terms will be used throughout this document

Dell Change Management Terminology

Dell Update Catalog	A metadata file to define all elements of a Dell update repository. The catalog file is in XML format or a .cab file containing a catalog XML file. For Dell server platforms, the Dell online catalog file is Catalog.cab while for Dell business client systems, it is CatalogPC.cab. Dell Repository Manager (Repository Manager) can save a catalog in XML or CAB formats.
Dell Update Package	A self-contained installation package for BIOS, firmware, drivers, and system application software.
Bundle	A virtual concept in a Dell update catalog. A bundle defines a container that contains a group of correlated Dell update packages. The common bundle is system bundle which includes all update packages for one Dell platform. All update packages of a bundle must be defined in the same catalog.
Component	A Dell update package. A component may or may not be contained within one or multiple bundles.
Source (Repository)	A source (repository) refers to a repository which a local repository can inherit bundles and/or components from. A source repository can be assigned by a user. By default, it refers to the Dell online repository which is hosted on ftp.dell.com. A source will be opened as a read-only repository in Dell Repository Manager.
Local Repository	A local repository is created by a Dell Repository Manager user. A local repository data are saved in a local database. The owner of a local repository has full permissions on a local repository.



4 Creating and updating iDRAC Repository using DRM

Here, we discuss about the procedure of creating iDRAC repository using DRM.

4.1 Procedure to Create and update iDRAC repository using DRM

1. You can create iDRAC Repository using DRM with the discovered models.
2. Go to "Search Dell Support Site" option in "My Repository" tab.
3. Select the repository and then select "Schedule Repository Search" option in the action pane.
4. Select the bundles in the repository.
5. Select the local repository path to save.
6. Schedule the frequency to check for new updates.
7. Configure Email settings if required.

iDRAC repository gets updated as per the schedule.



4.2 Create DRM repository using iDRAC inventory

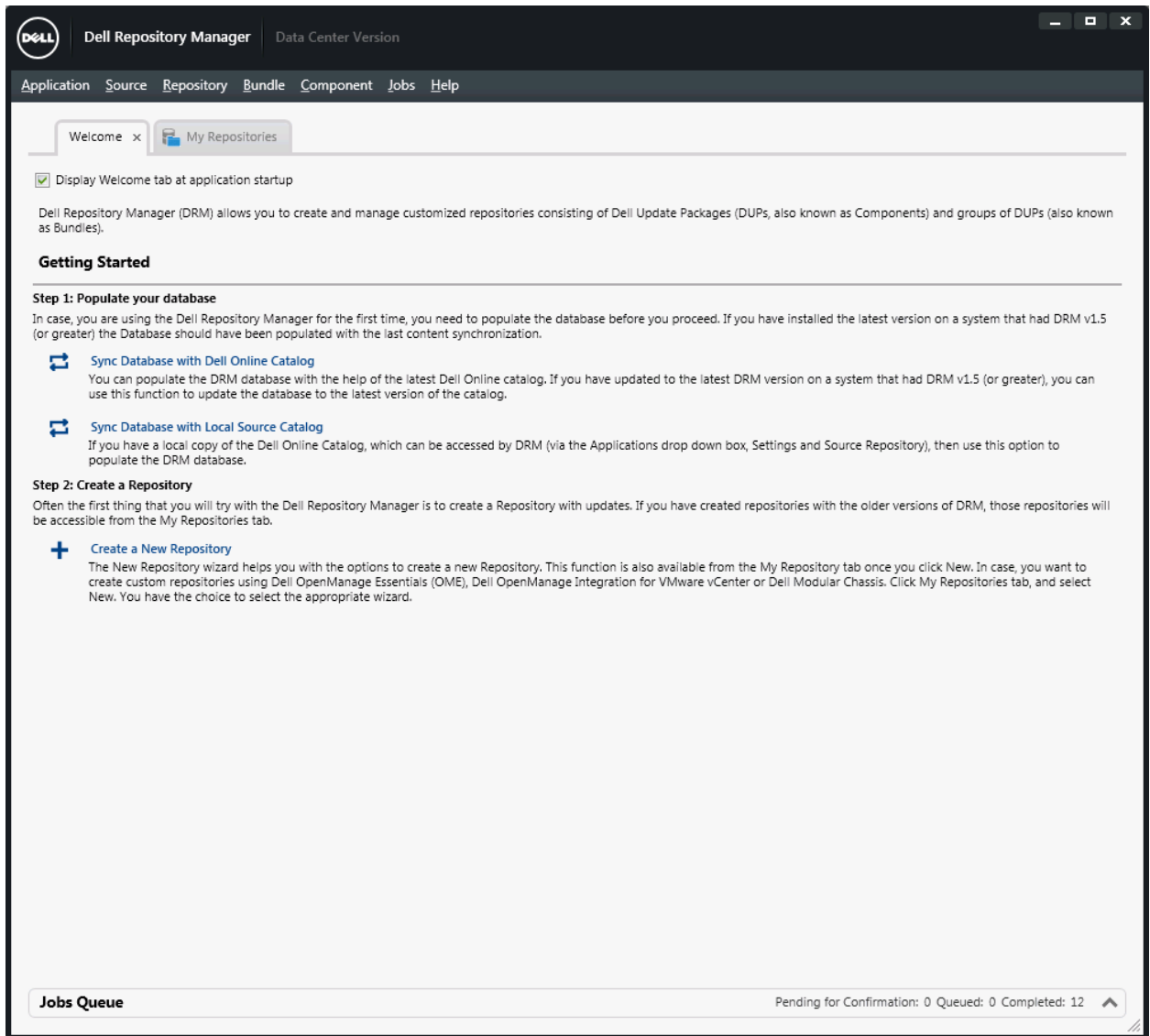


Figure 1 Dell Repository Manager Data Center Version Wizard

From the **Start** menu, open **All Programs** and select **Dell Repository Manager Data center Version**.

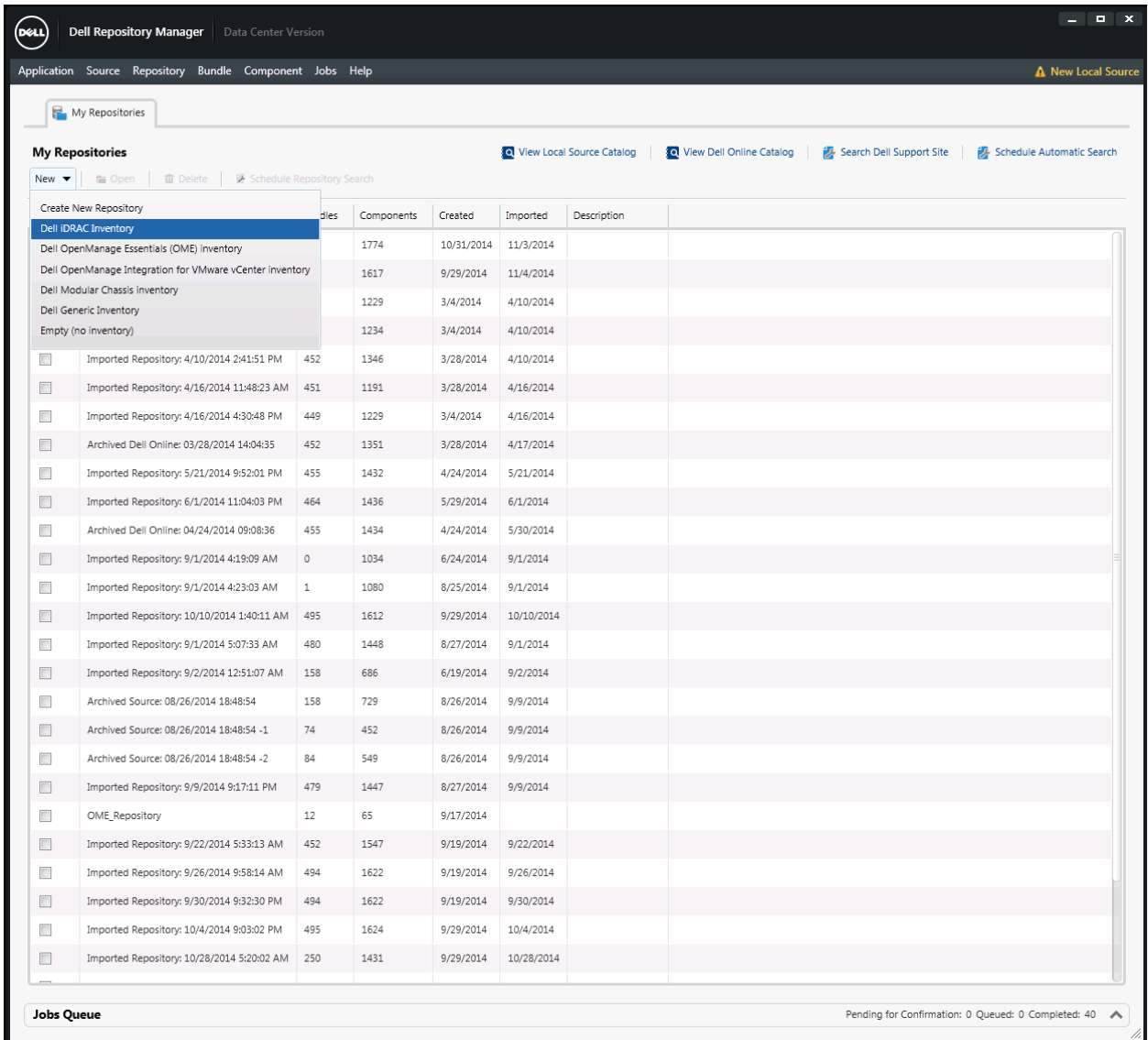


Figure 2 Launch Dell iDRAC Inventory wizard.

From the **New** drop-down menu, Select **Dell iDRAC inventory** option.



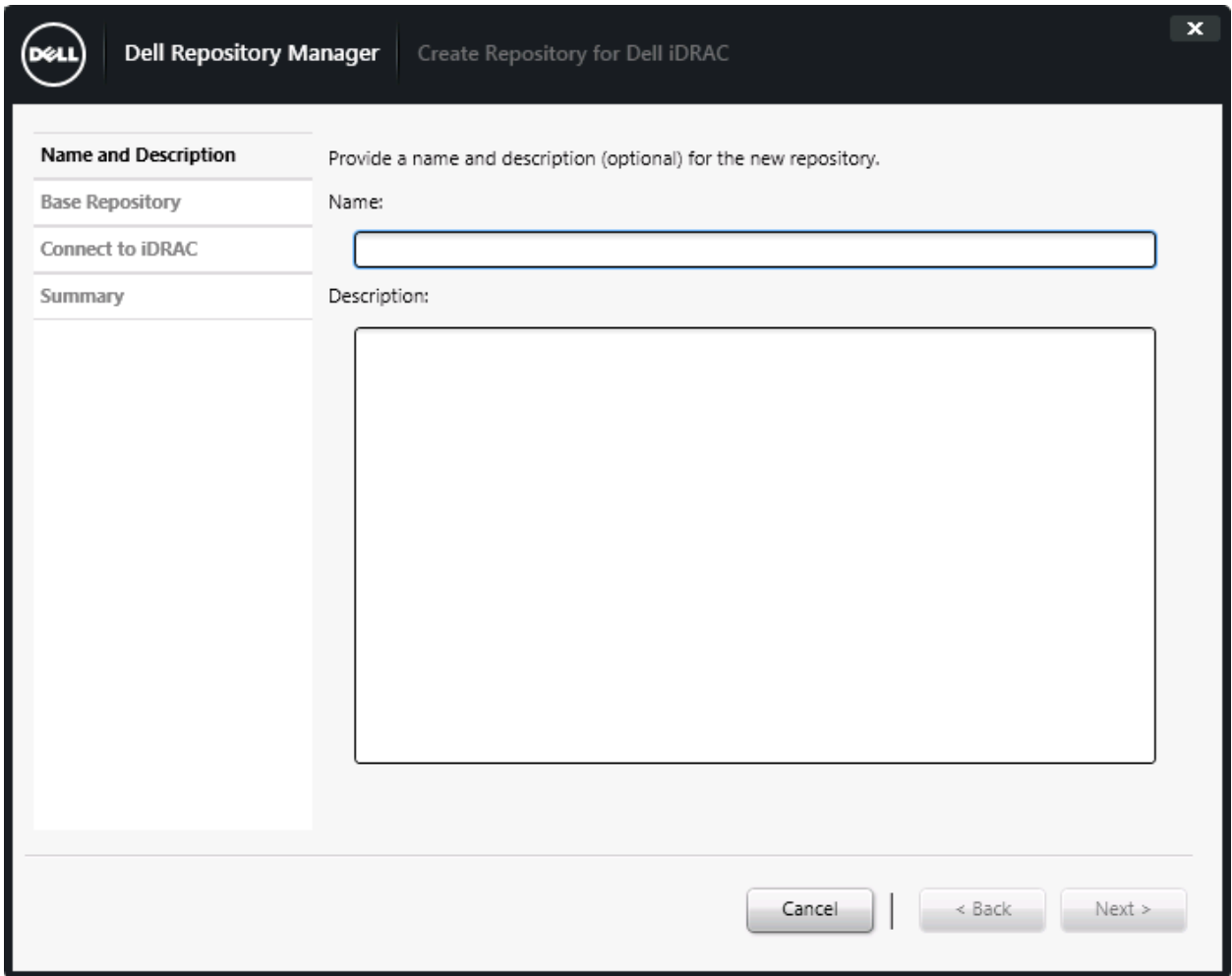


Figure 3 Create Repository for Dell iDRAC Wizard.

Create iDRAC repository by any name.



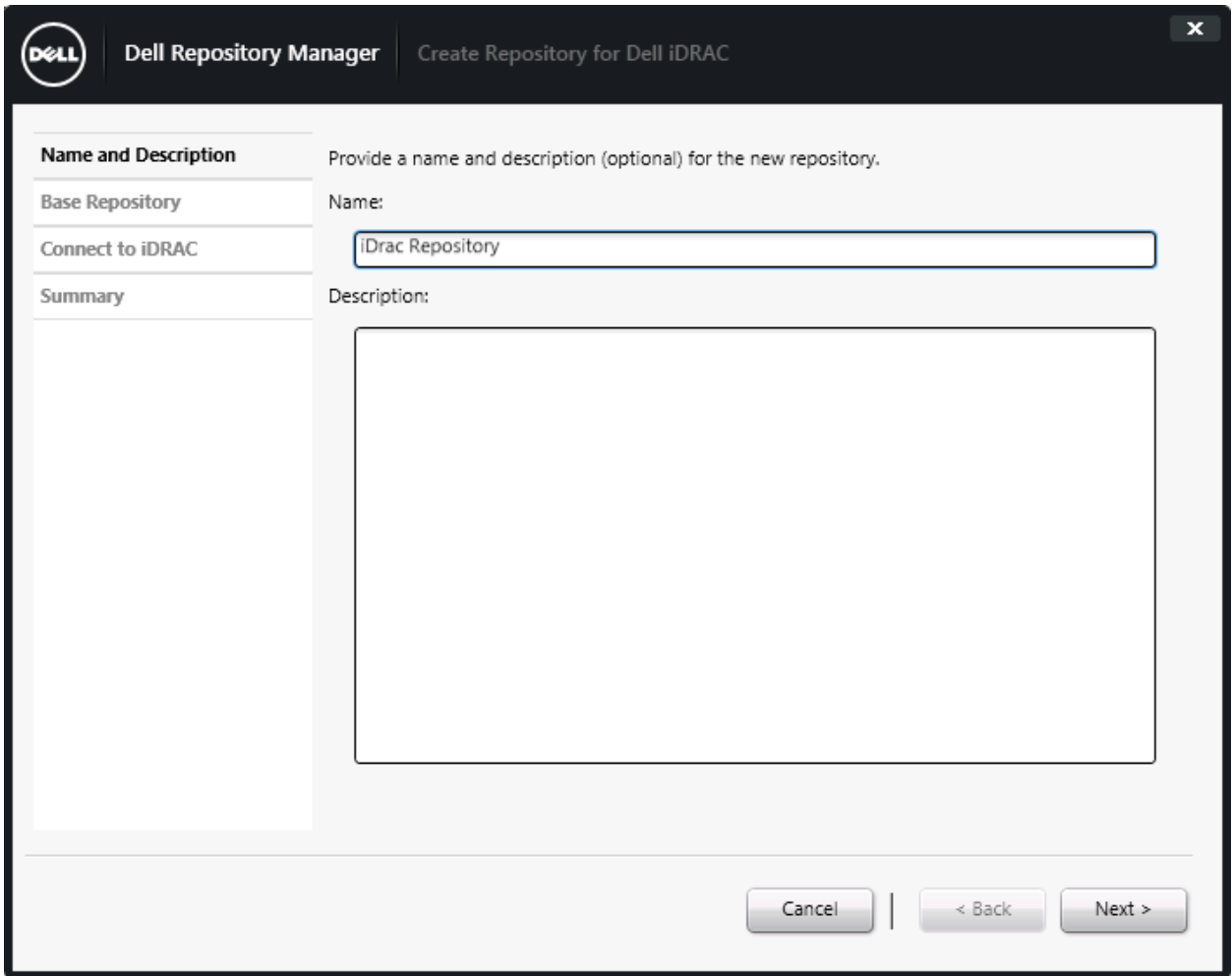


Figure 4 Create Repository for Dell IDRAC Wizard.

Click **Next**.



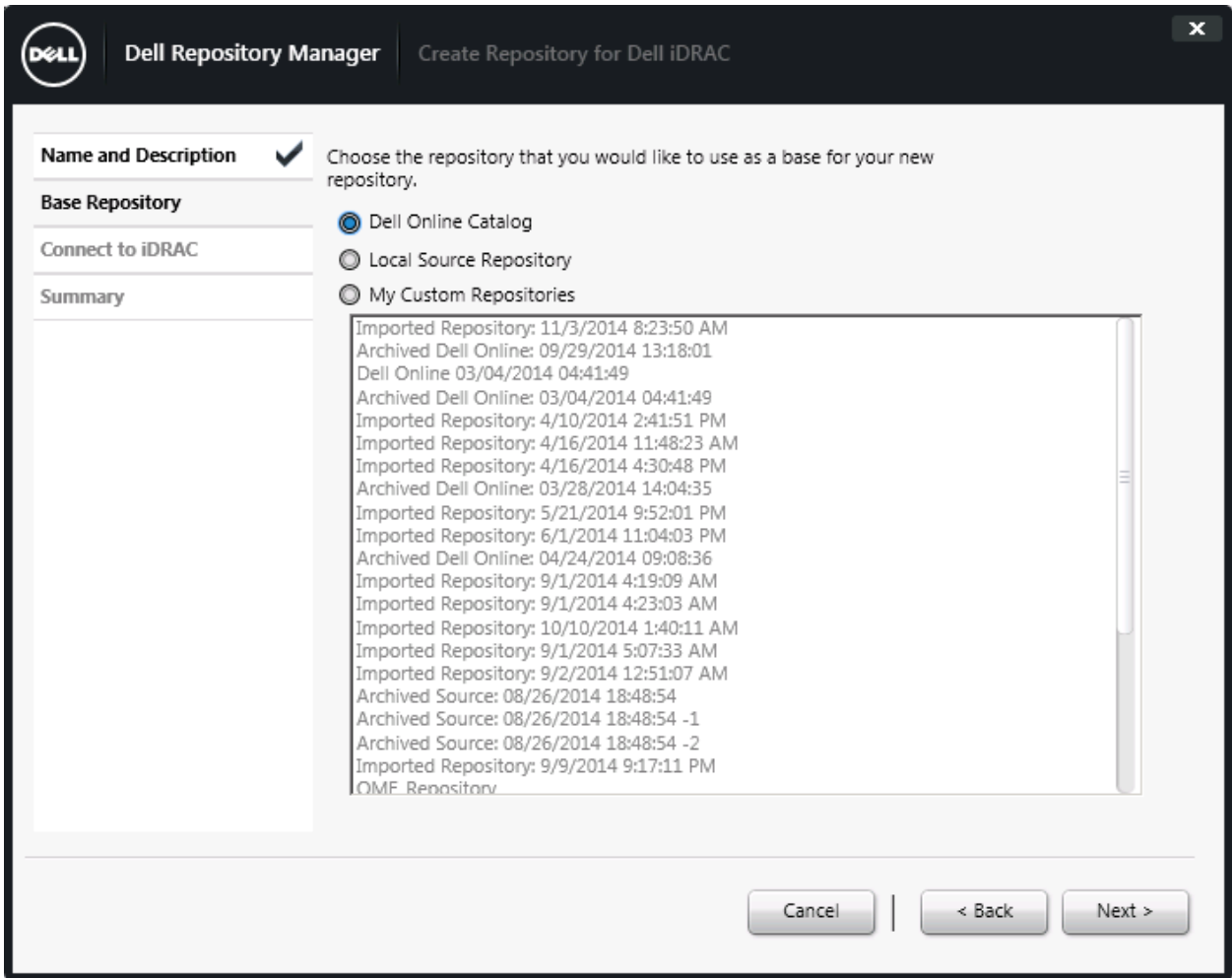


Figure 5 Create Repository for Dell iDRAC Wizard.

Select **Dell Online Catalog**, and then click **Next**.



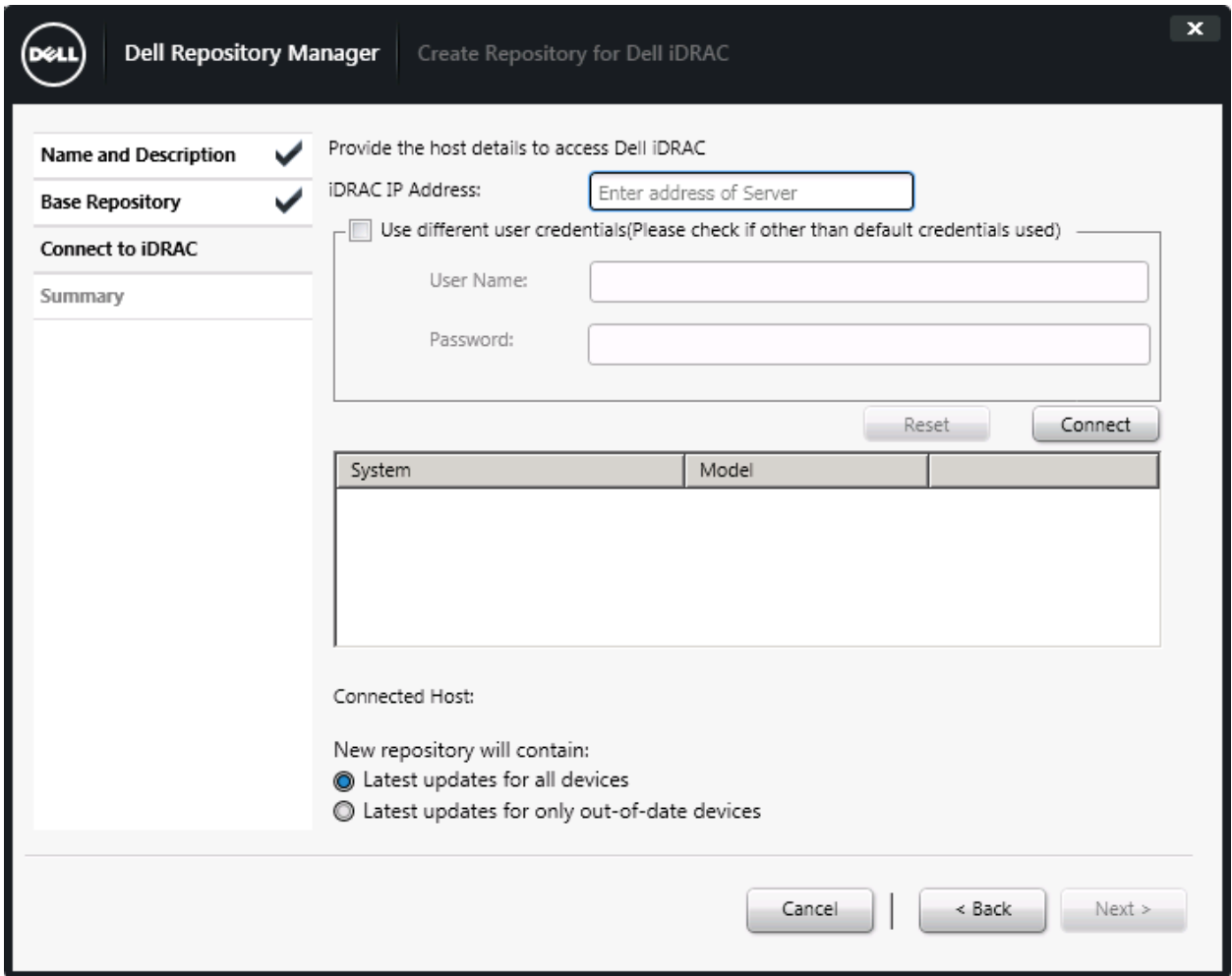


Figure 6 Create Repository for Dell IDRAC Wizard.

Provide iDRAC IP and Credential details.



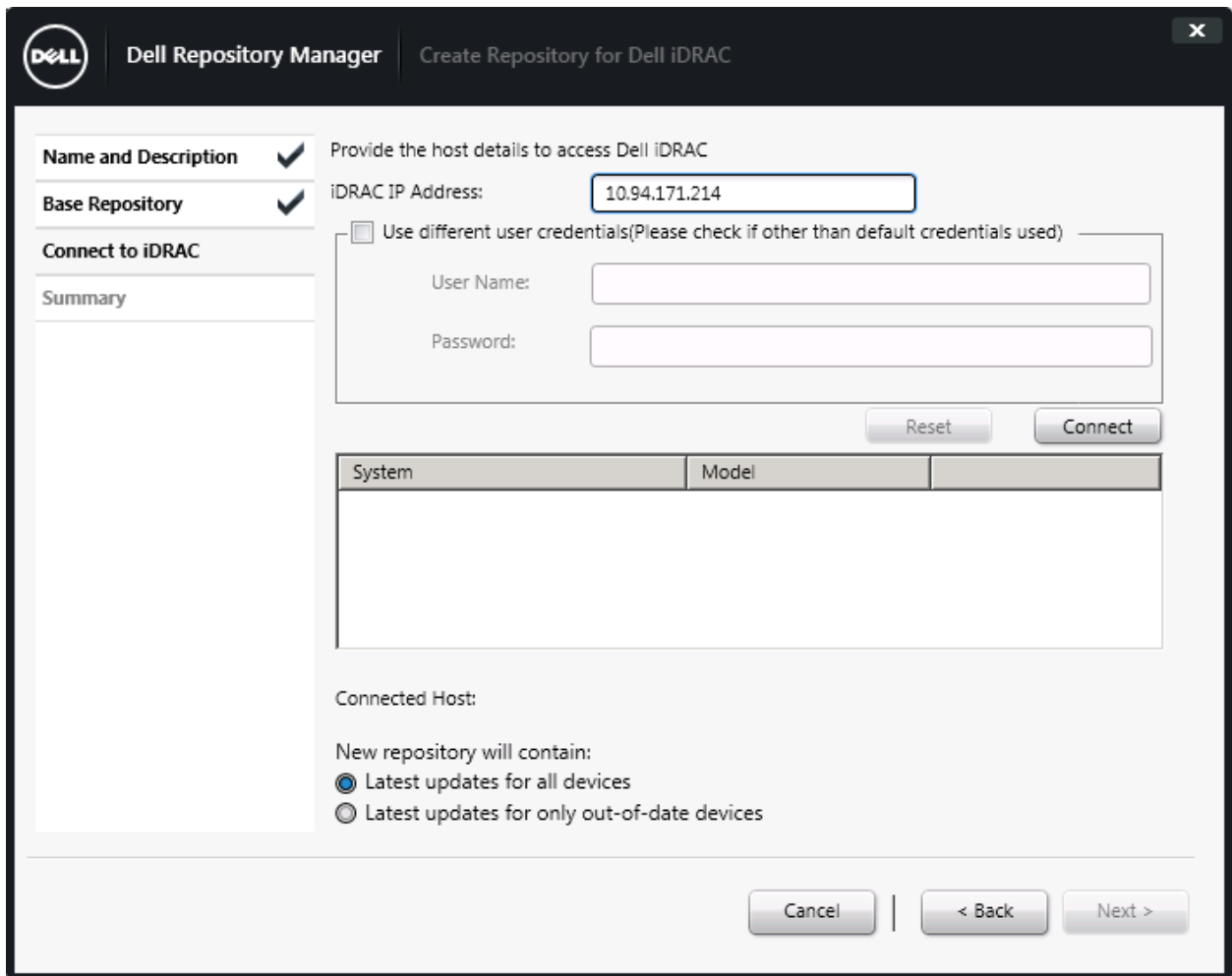


Figure 7 Create Repository for Dell iDRAC Wizard.

After IP and Credentials of iDRAC provided, click **Connect**.

The following are the default Dell iDRAC credentials,

Username: **root**

Password: **calvin**



Dell iDRAC Inventory wizard appears once the connection established successfully.

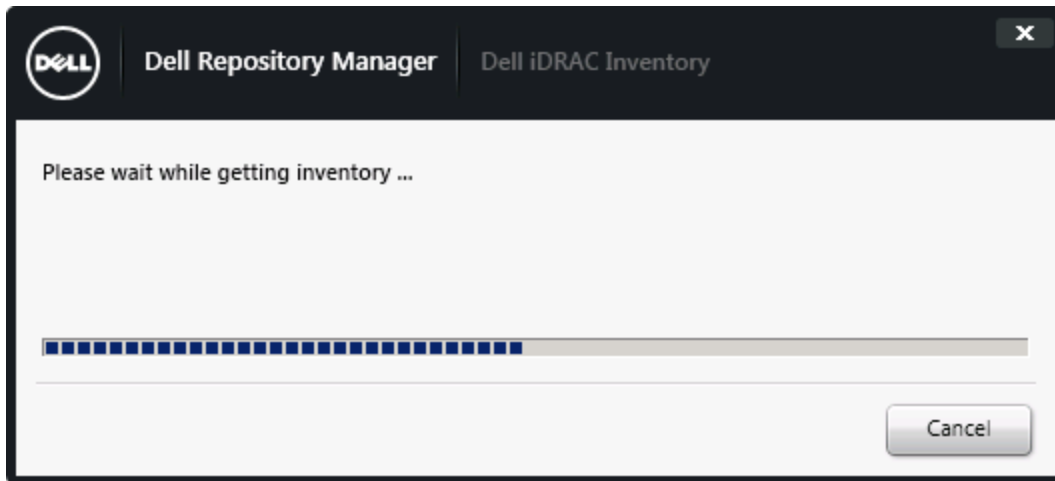


Figure 8 Dell iDRAC Inventory Wizard.

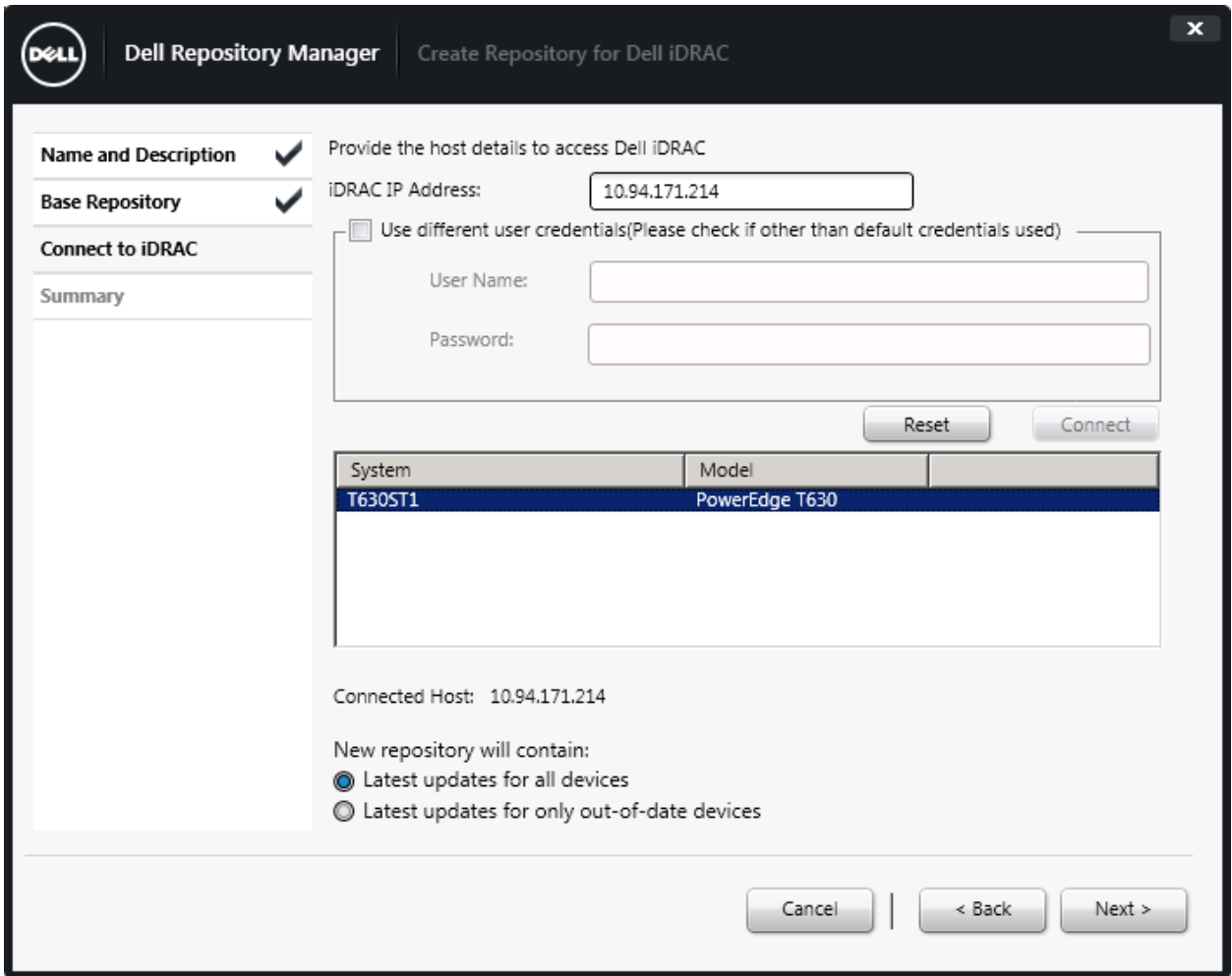


Figure 9 Create Repository for Dell IDRAC Wizard.

Discovered machines are listed in the System section.



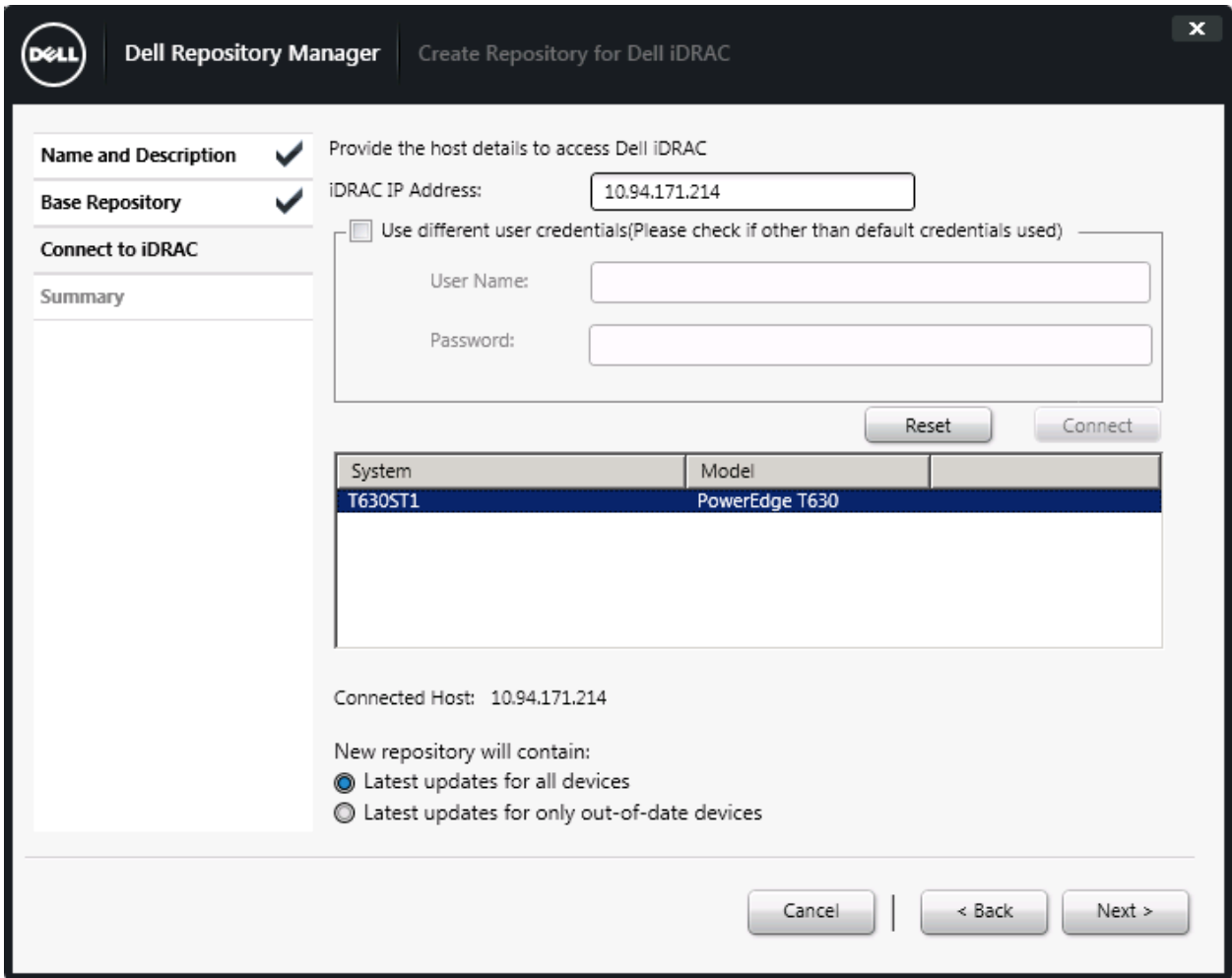


Figure 10 Create Repository for Dell iDRAC Wizard.

Click **Next**.



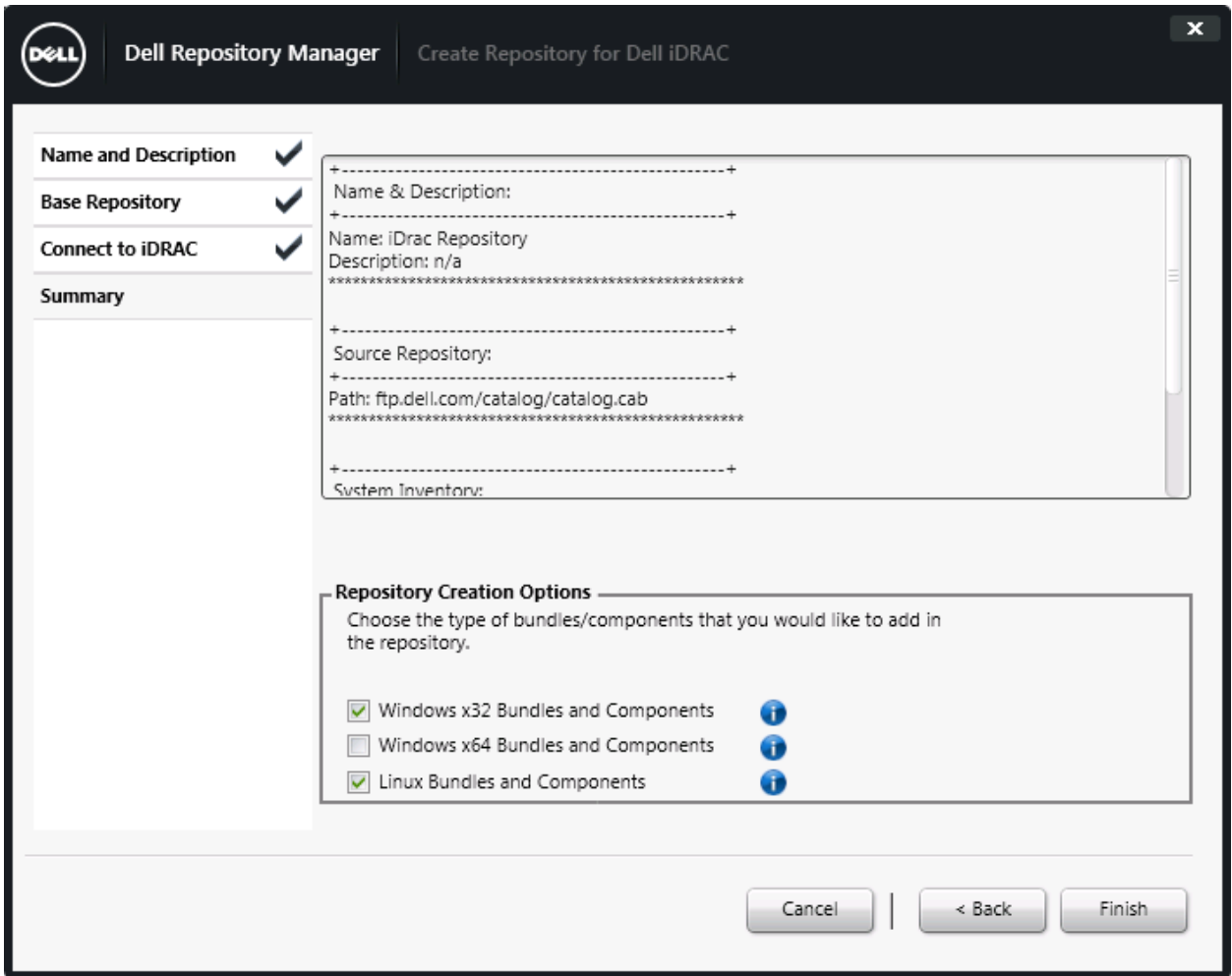


Figure 11 Create Repository for Dell iDRAC Wizard.

Click **Finish**.

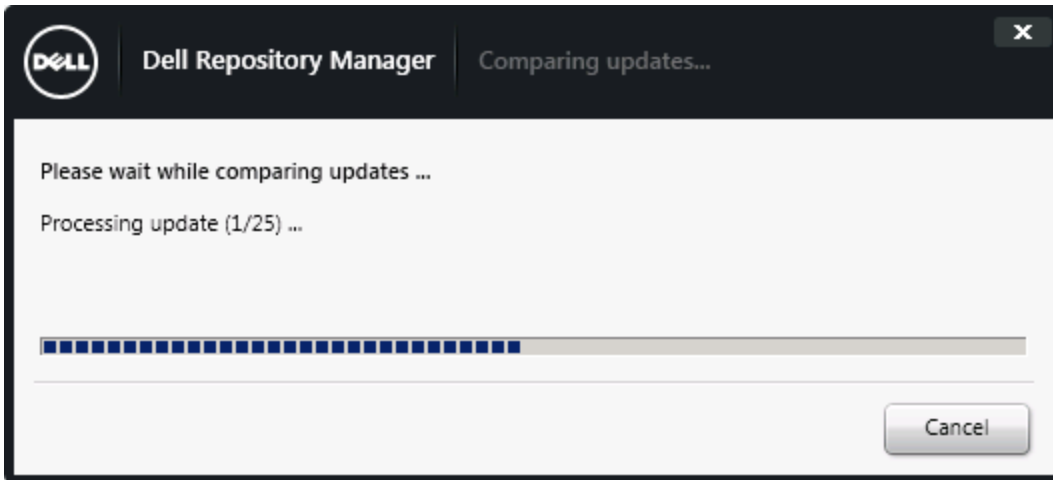


Figure 12 Comparing Updates wizard.

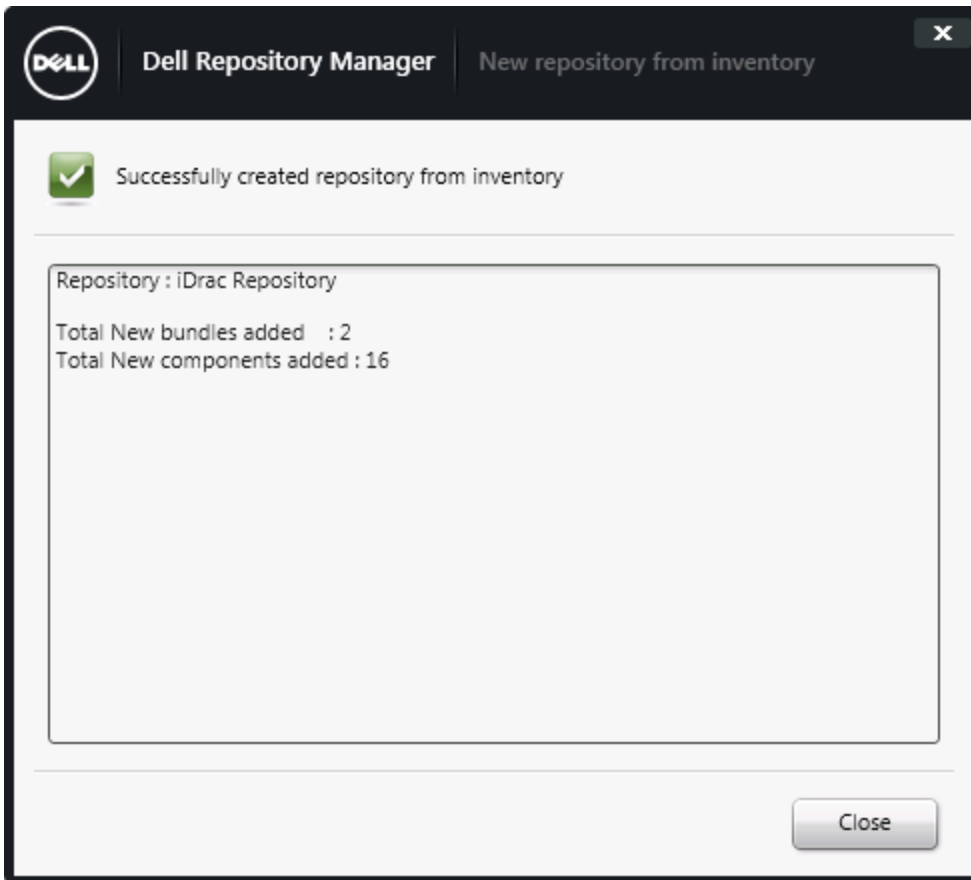


Figure 13 New repository from inventory wizard.

Click **Close**.

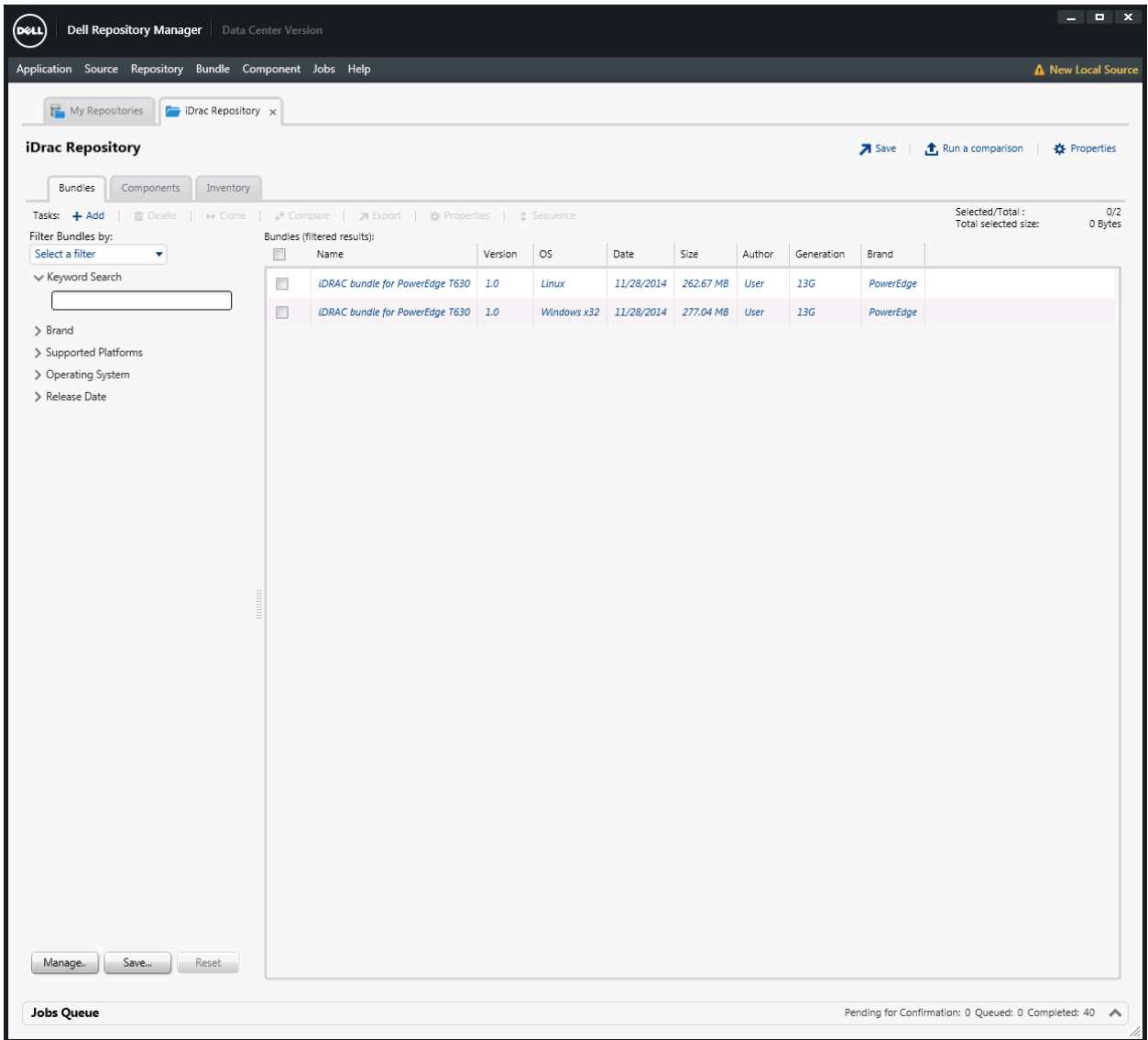


Figure 14 New Bundles created on iDRAC repository .

iDRAC Repository created with supported bundles for the selected platforms .



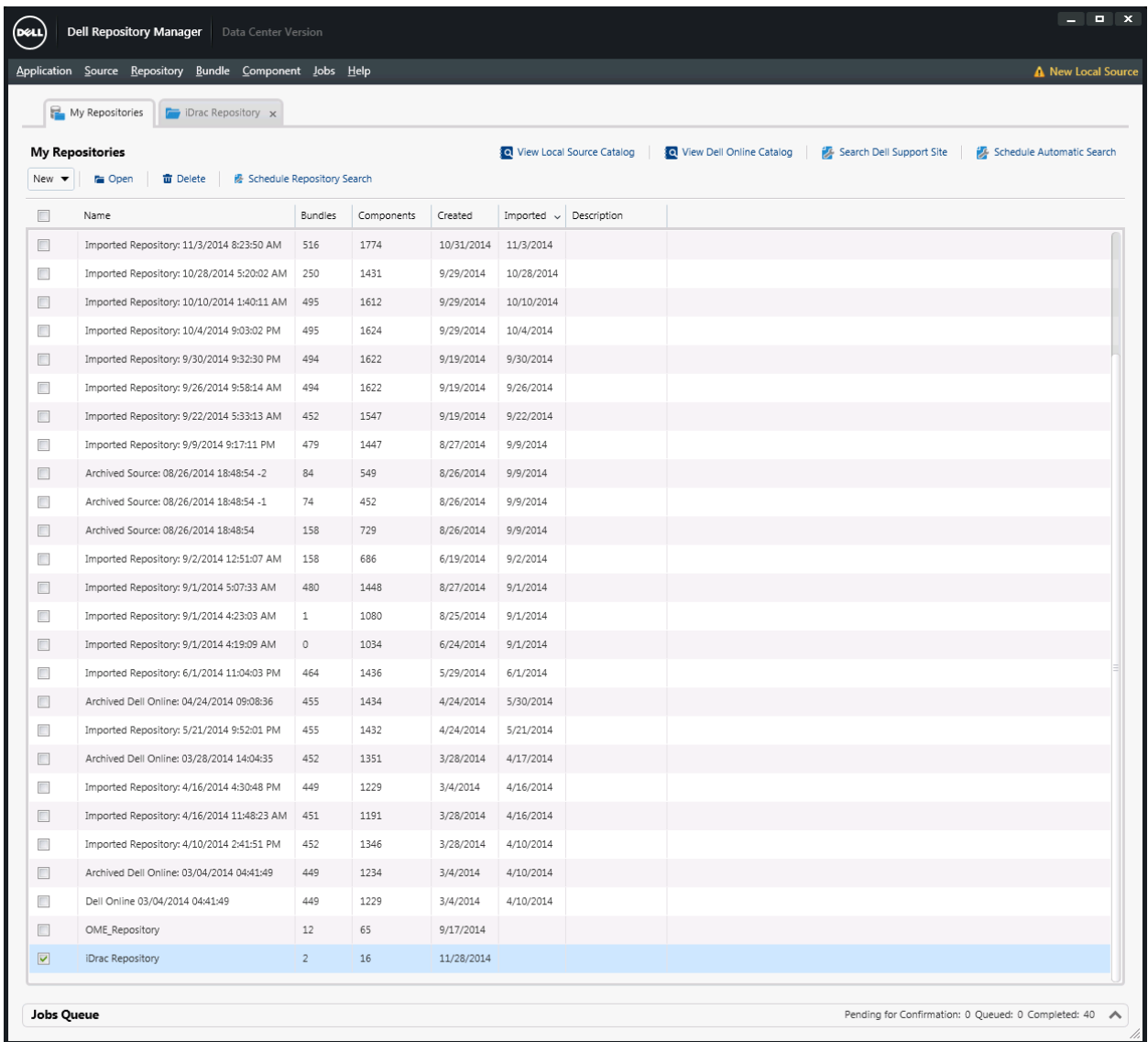


Figure 15 DRM My Repositories wizard.

Select **iDRAC Repository**, and then select **Schedule Repository Search** option in Action pane.



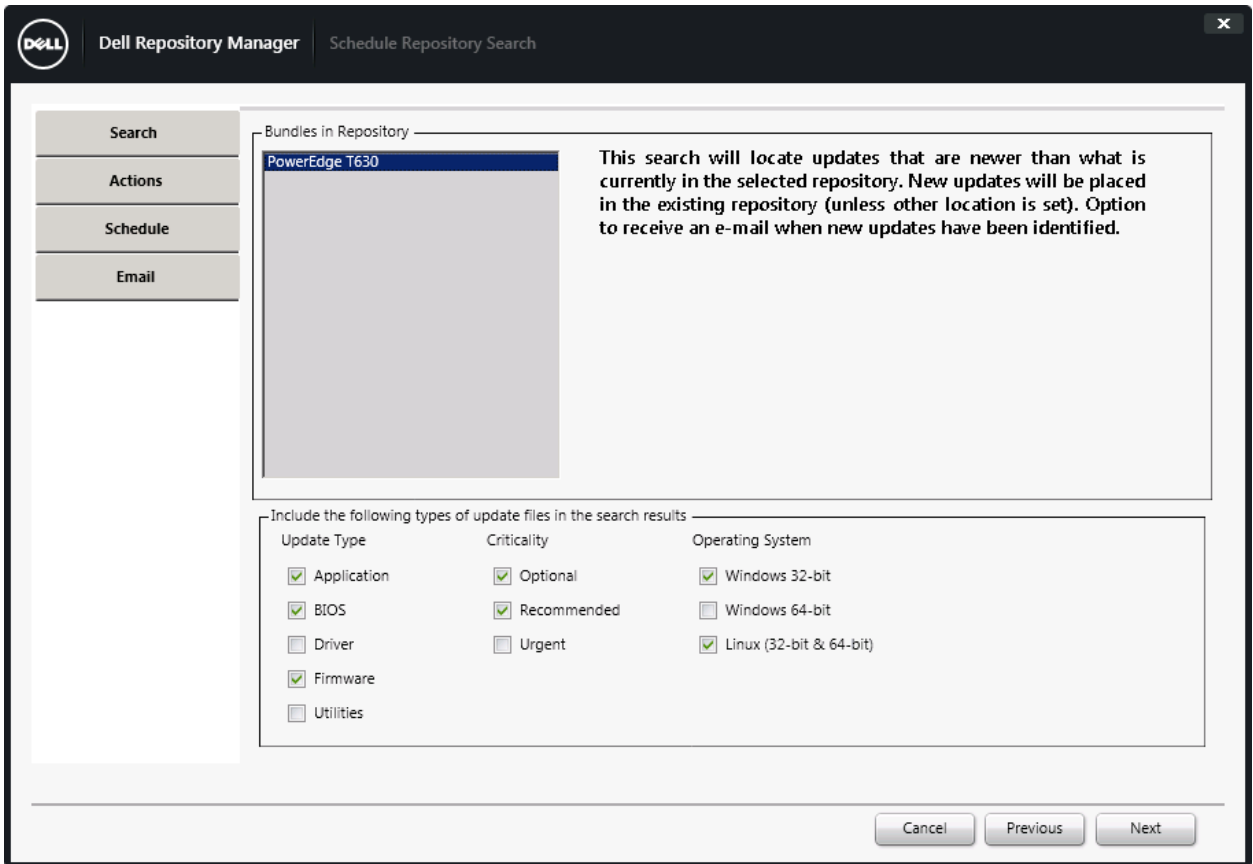


Figure 16 Schedule Repository Search Wizard.

Click **Next**.



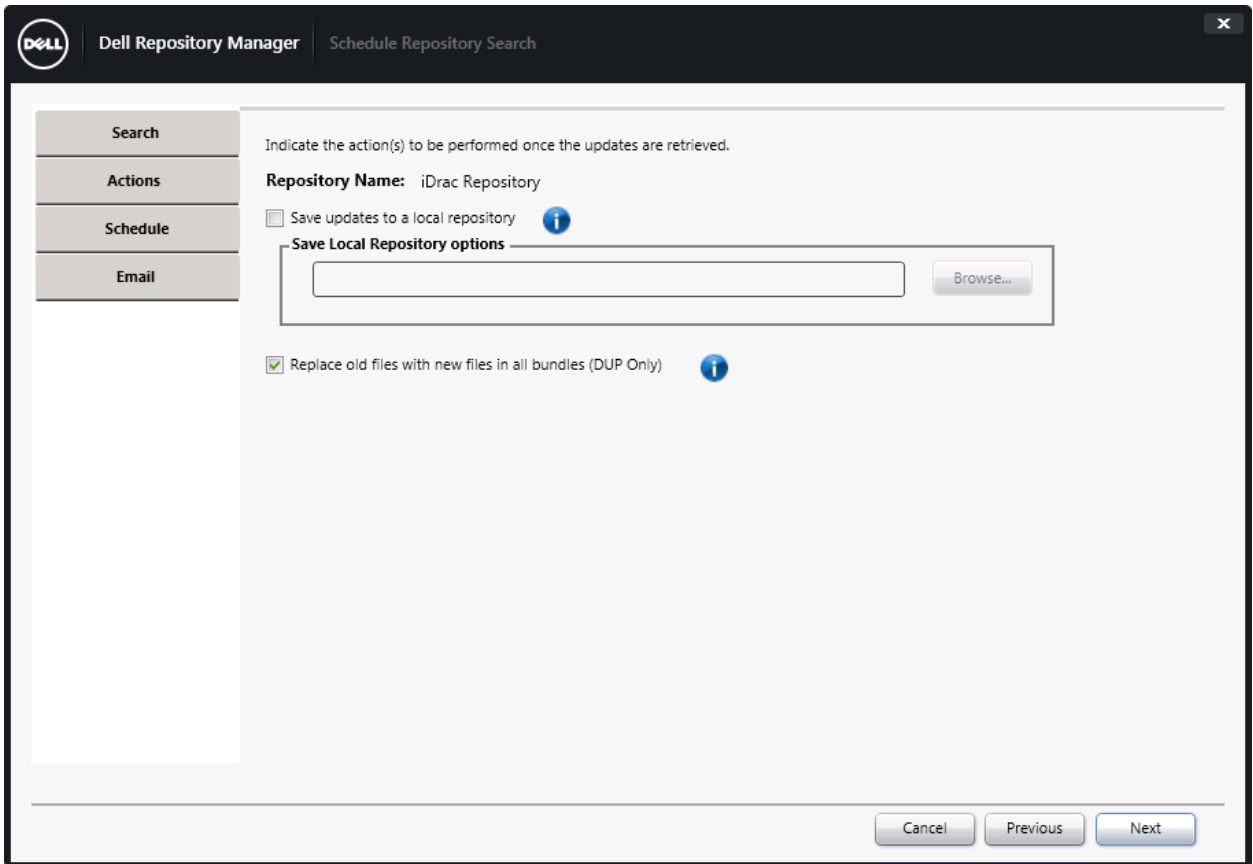


Figure 17 Schedule Repository Search Wizard.

Click **Next**.



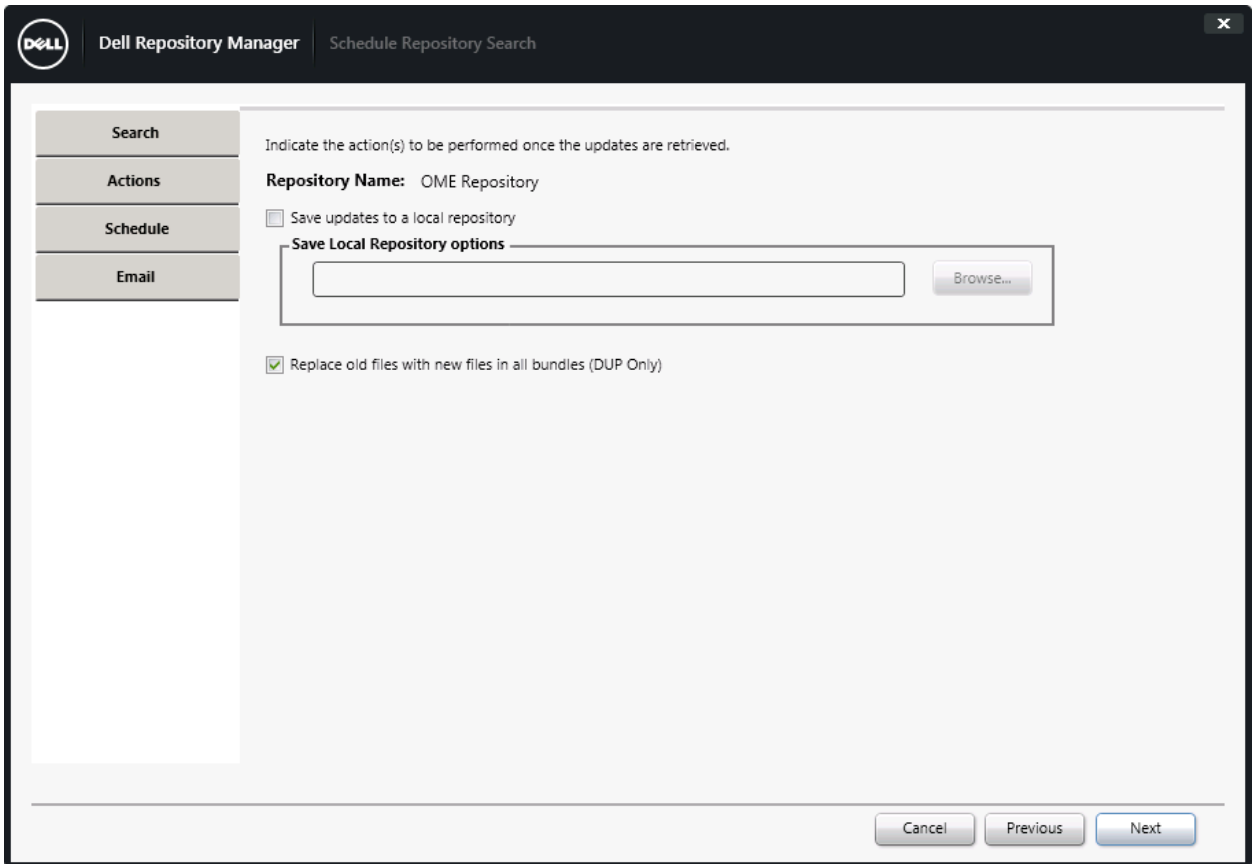


Figure 18 Schedule Repository Search Wizard.

Click **Next**.



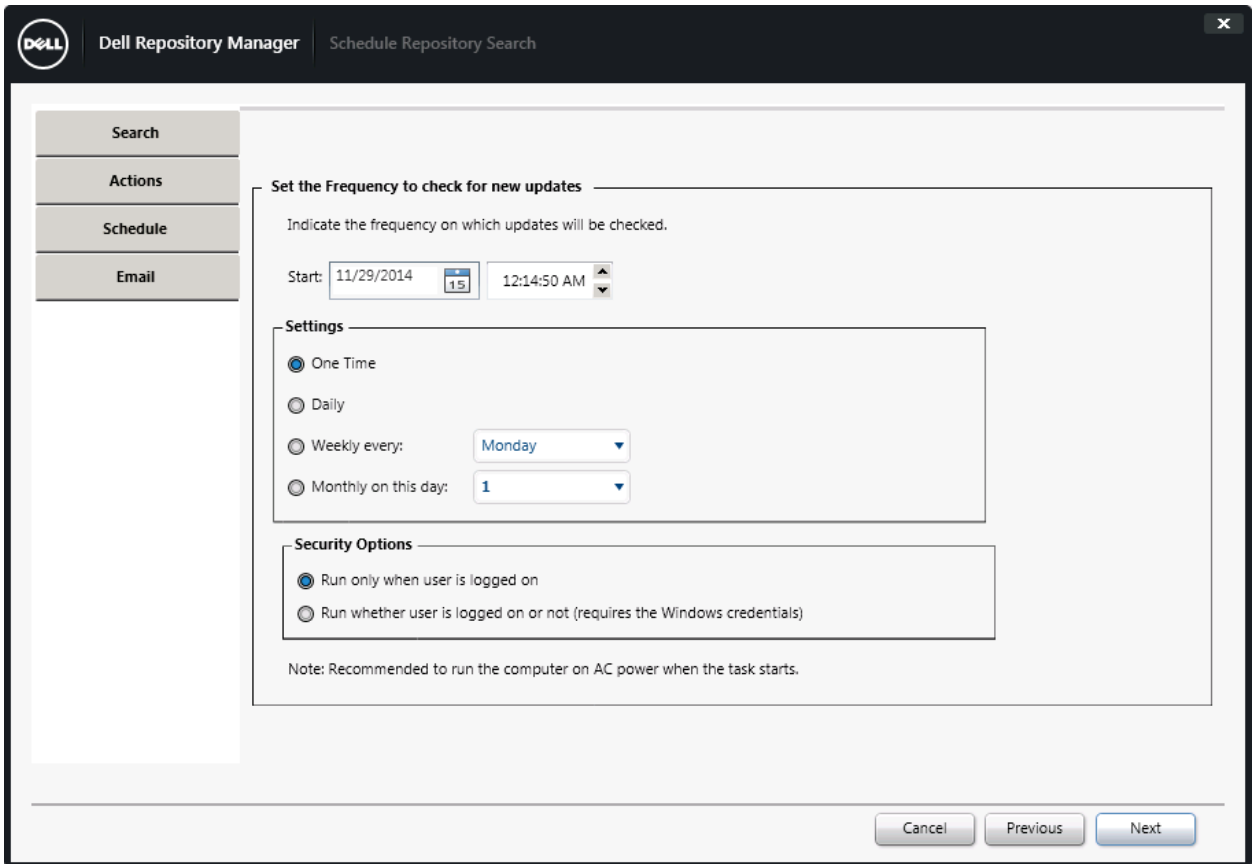


Figure 19 Schedule Repository Search Wizard.

Click **Next**.



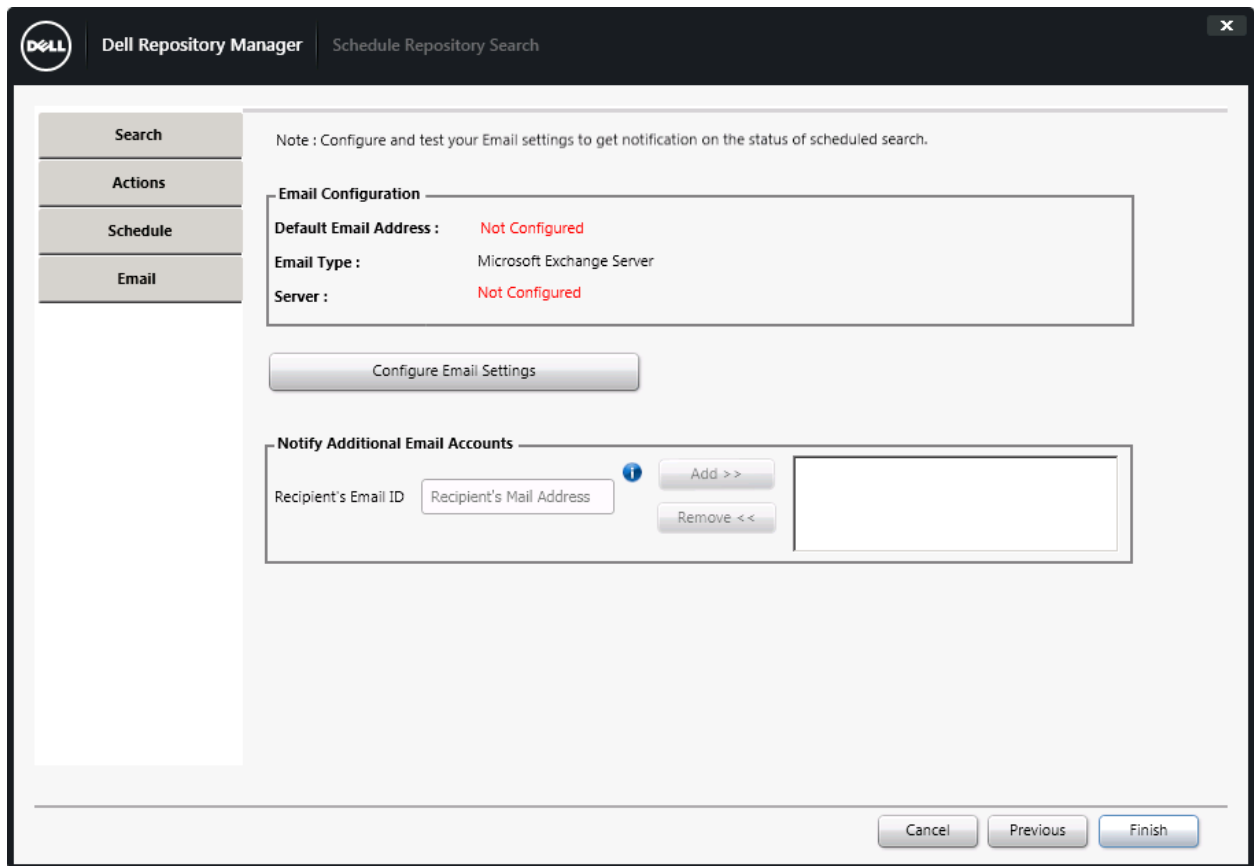


Figure 20 Schedule Repository Search Wizard.

Click **Finish**.



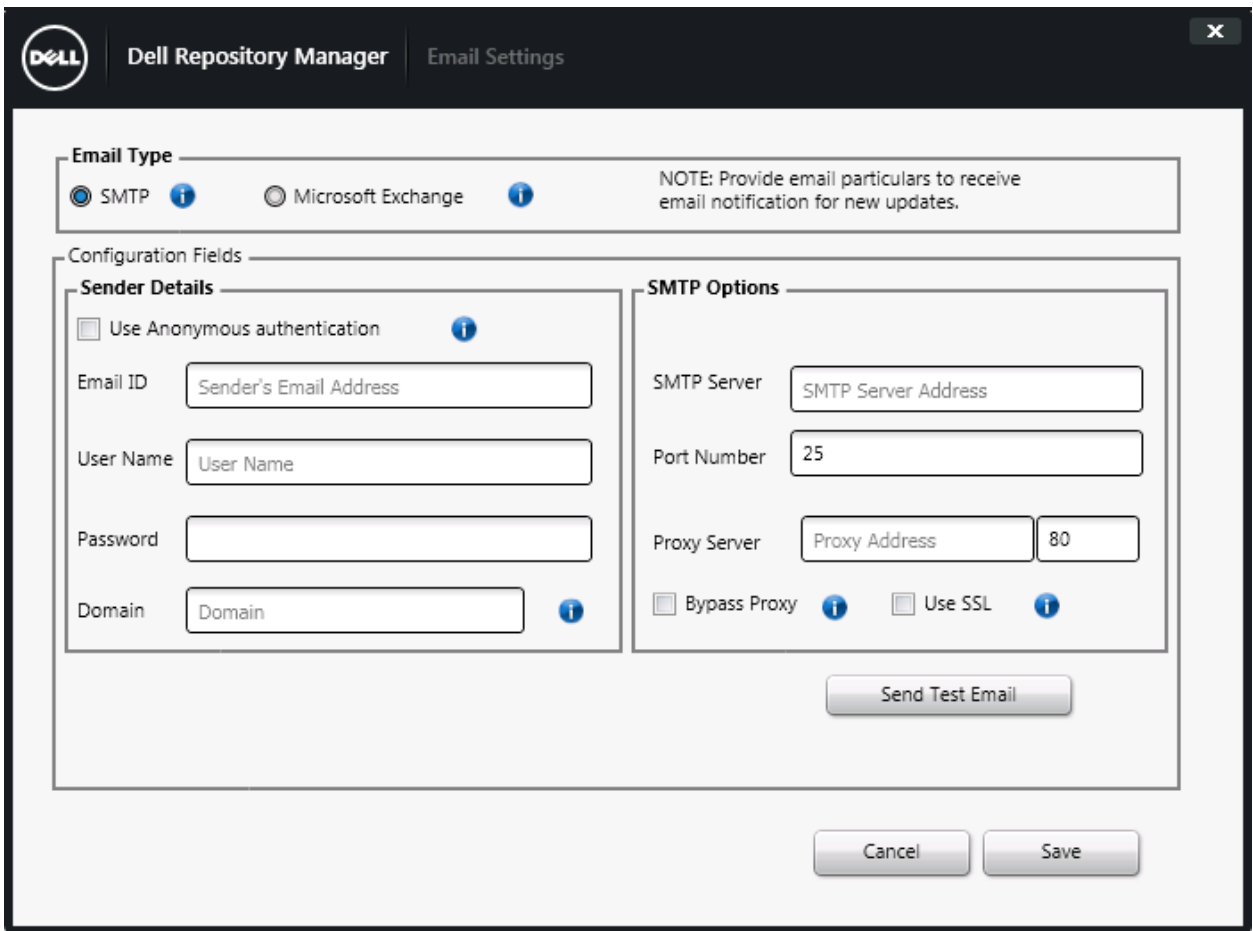


Figure 21 Email settings wizard.

Use SMTP server IP and credential details to configure SMTP.

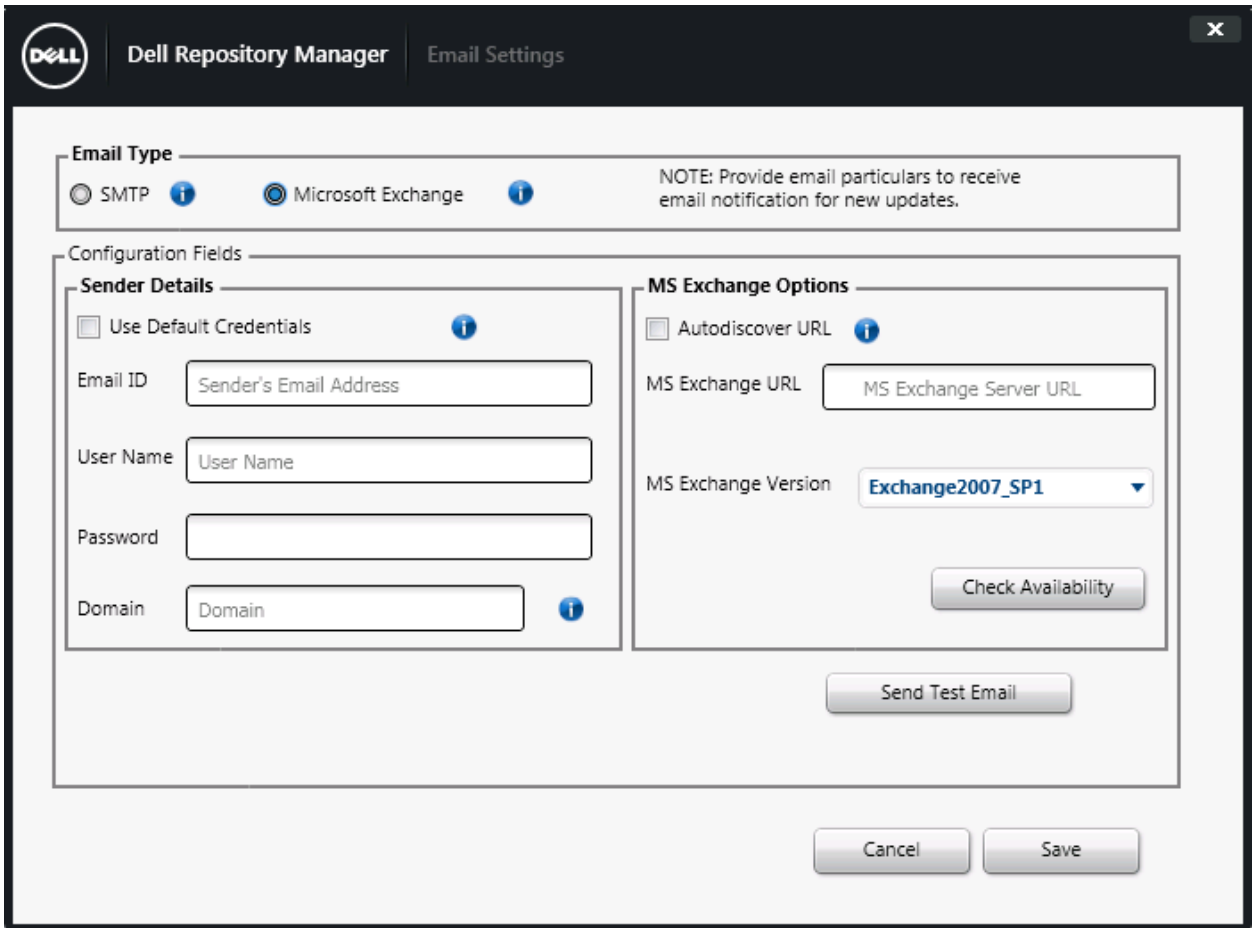


Figure 22 Email settings wizard.

Use Microsoft Exchange server IP and credential details to configure Microsoft Exchange.

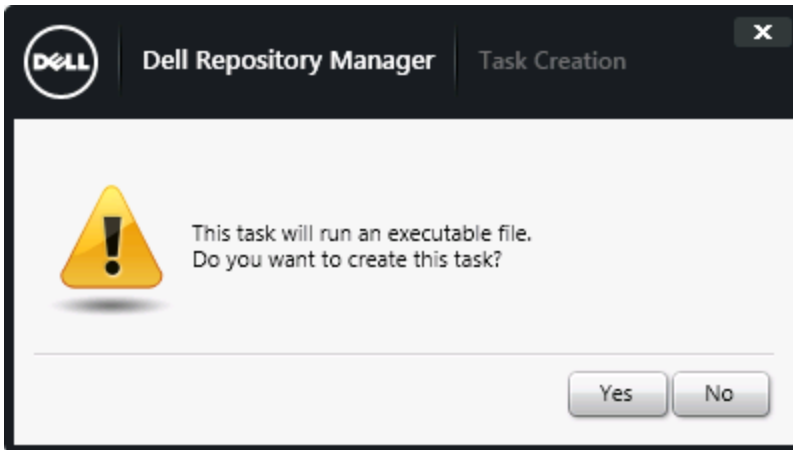


Figure 23 Task Creation Wizard.

Click **Yes**.

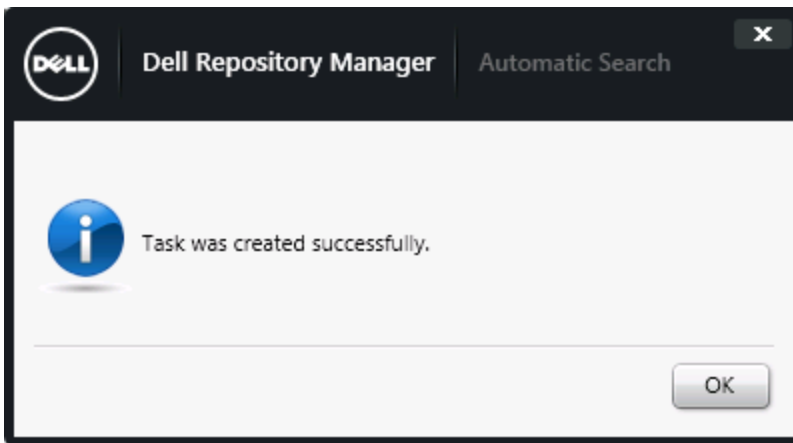


Figure 24 Automatic Search Wizard.

Click **OK**.



5 Additional resources

Support.dell.com is focused on meeting your needs with proven services and support.

DellTechCenter.com is an IT Community where you can connect with Dell Customers and Dell employees for the purpose of sharing knowledge, best practices, and information about Dell products and installations.

Referenced or recommended Dell publications:

- Install Guide :
http://www.dell.com/support/home/us/en/19/Products/software/ent_sys_mgmt/ent_sys_mgmt_repository_mgr
- User Guide
http://www.dell.com/support/home/us/en/19/Products/software/ent_sys_mgmt/ent_sys_mgmt_repository_mgr
- Reference Guide:
http://www.dell.com/support/home/us/en/19/Products/software/ent_sys_mgmt/ent_sys_mgmt_repository_mgr
- Dell Repository Manager: Tech center:
<http://en.community.dell.com/techcenter/systems-management/w/wiki/1767.dell-repository-manager>
- Dell Repository Manager: Whitepapers
<http://en.community.dell.com/techcenter/systems-management/w/wiki/5103.dell-repository-manager-white-papers>

