

Dell Rugged Barcode Scanner module with USB for Latitude Rugged 7220

User's Guide



Notes, Cautions, and Warnings



NOTE: A NOTE indicates important information that helps you make better use of your computer.



CAUTION: A CAUTION indicates potential damage to hardware or loss of data if instructions are not followed.



WARNING: A WARNING indicates a potential for property damage, personal injury, or death.

Copyright © 2021 Dell Inc. or its subsidiaries. All rights reserved. Dell, EMC, and other trademarks are trademarks of Dell Inc. or its subsidiaries. Other trademarks may be trademarks of their respective owners.

2021 – 08
Rev. A00

Contents

1 Introduction	4
2 Features	5
<i>Unique Features</i>	6
3 Setting up your Barcode Scanner	7
4 Technical Specifications	10
5 RCC User Guide for Scanner Module	13
6 Contacting Dell	21

1. Introduction

Dell Rugged Barcode Scanner Module with USB for the Dell Rugged Extreme 7220 Tablet provides an enhanced scanning experience along with two extended USB ports.

HMX view link

<https://content.hmxmedia.com/dell-scanner-module-for-rugged-extreme-tablet/index.html>

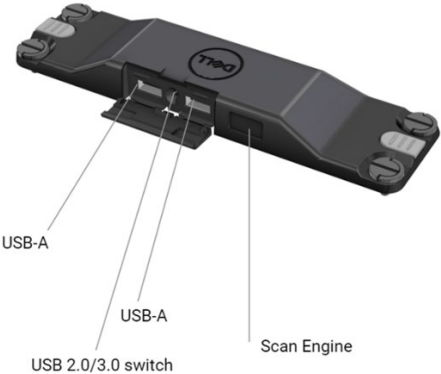
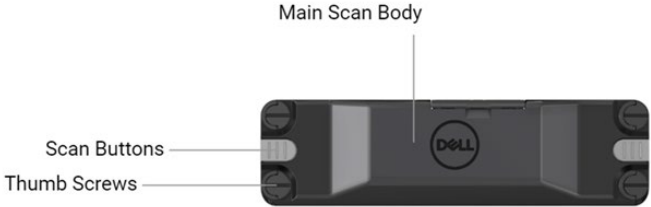


2. Feature

Dell Rugged Barcode Scanner Module with USB ports

- Scans and tracks 1D/2D barcodes from an even further distance than before, with the latest Honeywell scan-engine and scanning technology
- Provides 2 external physical triggers on the scanner that can be used to invoke the scanner
- Can be configured using RCC and invoked using Tablet Programmable Buttons
- Preserves MIL-STD-810G/H and IP-65 ratings on rugged tablet, even with the scanner attached
- Can scan 1D/2D barcodes with improved reliability and performance.
- Increased barcode scanning speeds to meet higher-volume application requirements
- Available with two optics: SR (Standard Range) optics which reads UPC codes up to 57.3 cm (22.5 in), and HD (High Density) optics that enabled reading DotCode, 2,5 mil C39, and 5 mil Data Matrix high resolution codes.
- Wider operational temperature range increases potential applications.
- Delivers motion tolerance of up to 6 m/s, enabling operational effectiveness.
- Lower power consumption improves system battery life over previous models.
- Parallel or MIPI interface availability helps simplify integration.
- Choice of high brightness LED and laser aiming systems to better suit application requirements while improving aimer visibility.
- Dell Rugged Barcode Scanner module with USB also adds two USB 3.0 ports to Rugged Extreme 7220 Tablet.
- Selectable port speed by toggle switch.

- **Unique features**



NOTE: Recommended to have RCC 4.2.1 or later installed on Latitude Rugged 7220.

3. Setting up your Rugged Scanner with USB

1. Turn the tablet over and align the screws to the holes at the back of the tablet.



Attach the Rugged Scanner with USB to the tablet, easily, with thumb-screws.

(Step 2 & 3 are on the next page.)



(Continued from the previous page.)

2. Lift up the screw handles and tighten all four screws.

3. Install Rugged Scanner with USB drivers on your Dell Rugged tablet.



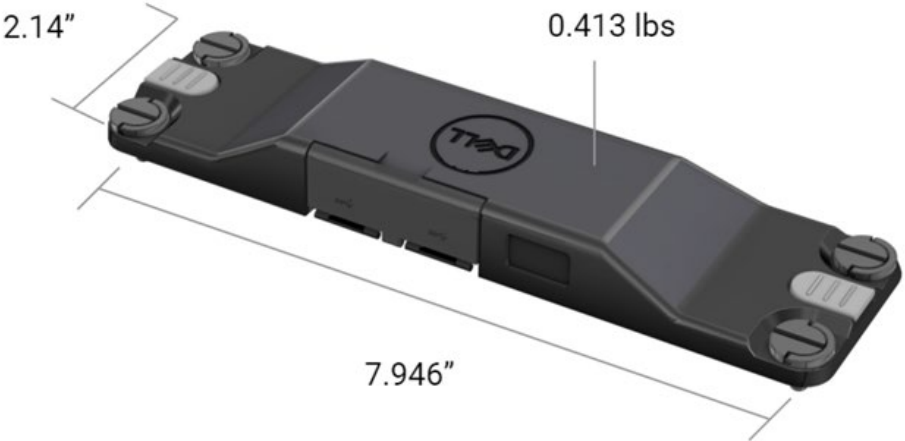
www.dell.com/support



4. Technical specifications

- Dimensions and weight

Description	Value
Height	19.4 mm (0.765")
Width	55 mm (2.14")
Length	201.8 mm (7.946")
Weight	187.5 g (0.413lb)



- **Scanner Requirement**

Table 1. Supported Symbologies

Test Item	Item#	Barcode Type
Barcode (1D)	1	UPC
	2	EAN
	3	Code 39
	4	Code 128
	5	Code 11
	6	Code 93
	7	MSI Plessey
	8	ITF
	9	Codabar
	10	GS1 Databar

Barcode (2D)	1	QR Code
	2	Micro QR
	3	Datmatrix
	4	PDF417
	5	Micro PDF417
	6	Composite Codes
	7	TLC-39
	8	Aztec
	9	Australian Post Standard Customer
Media		

- **USB Type A**

1. Two USB 3.2 Gen-1 ports
2. Support 2.1 A (min) through the ports
3. Ports will not support USB power share

- **USB Switch**

Module shall have a switch to enable/disable USB 3.0 communication for GPS interference

- **Scanner Trigger**

Scanner module shall have two user trigger buttons with either capable of initiating scan.

- **User Indicators**

1. Barcode scan shall have an LED which indicates scanning in progress or to be used for diagnostic purposes
2. Barcode shall have an audible tone to indicate scan captures

- **Environmental**

1. Operating temperature: -29C to 60C
2. Non-operating temperature: -40C to 70C
3. Meet MIL-810-H Requirement

- **Regulatory**

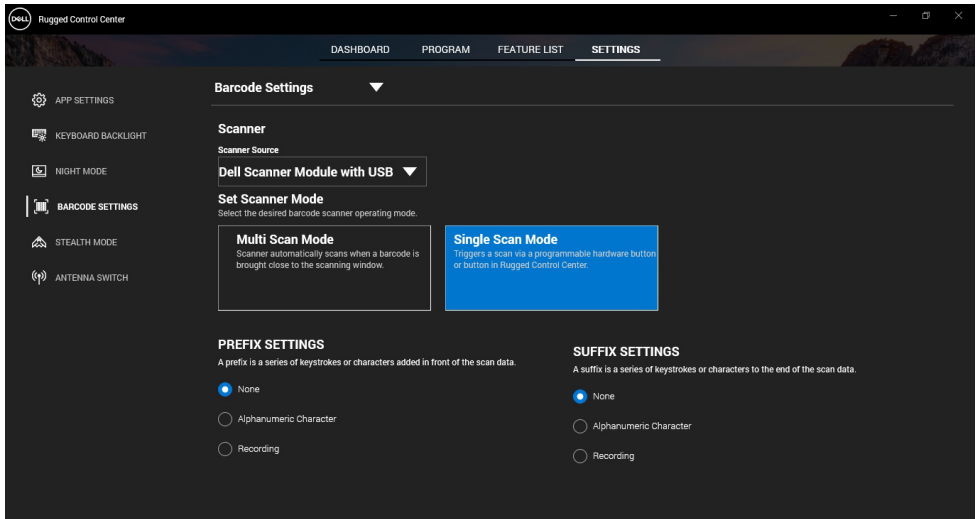
1. Regulatory Model: T03HBCSU
2. Ratings: 5.5A 6-8.4Vdc
3. Laser Classification: Intended for use in CDRH Class II/IEC 60825-1 Class 2 devices
4. Electrical Safety: IEC 62368-1, EN 62368-1 and UL 60950-1 recognized laser component
5. RoHS Compliant: EN IEC 63000

△ Use of controls or adjustments or performance of procedures other than those specified herein may result in hazardous radiation exposure

5. RCC User Guide for Rugged Scanner with USB

Barcode Settings

You can use the barcode settings feature to capture and read information that is contained in a barcode. In Rugged Control Center, you can connect an external scanner to your system, or use the camera-based scanner to scan the barcode.



Download and install Dell Rugged Scanner with USB module driver

Prerequisites

- Ensure that your operating system is updated to the latest version.
- Ensure that you do not attach the scanner module to your system before installing the driver.
- Download and install the Dell Rugged Control Center application from www.dell.com. For more information, see [Download Rugged Control Center](#).

Steps

1. To download the **Rugged Scanner with USB** driver, go to

www.dell.com/support.

2. In the **Enter a Service Tag, Serial Number, Service Request, Model, or Keyword** search box, type the product name. For example: Latitude 7220 Rugged Extreme Tablet.
A list of matching products is displayed.
3. Select your product from the list.
4. Click **DRIVERS & DOWNLOADS**.
5. Download the **Dell Barcode Module** driver.
6. Double-click the downloaded file to start the installation wizard.
7. Follow the on-screen instructions to complete the installation process.
The **Dell Barcode Module** driver is installed.
8. Connect the Rugged Scanner with USB to your system.

Download and install Dell Rugged Scanner with USB module driver

Prerequisites

To install the **Rugged Scanner with USB** driver, ensure that Rugged Control Center is updated to version 4.2 or later, and the scanner module is connected to the back of the rugged tablet.

Steps

1. To download the **Rugged Scanner with USB** driver, go to www.dell.com/support.
2. In the **Enter a Service Tag, Serial Number, Service Request, Model, or Keyword** search box, type the product name. For example: Latitude 7220 Rugged Extreme Tablet.
A list of matching products is displayed.
3. Select your product from the list.
4. Click **DRIVERS & DOWNLOADS**.
5. Download the **Dell Rugged Scanner with USB** driver.
6. Double-click the downloaded file to start the installation wizard.
7. Follow the on-screen instructions to complete the installation process.
The **Dell Rugged Scanner with USB** driver is installed.

Set up Dell Rugged Scanner module with USB

Dell scanner module with USB driver supports Serial Mode Communication mode interface communication with Rugged control center application. The

Serial mode requires a driver that must be installed in your system.

Prerequisites

Ensure that you restart Rugged Control Center if it is running in your system after connecting the scanner or changing the communication mode.

About this task

To setup the scanner using serial mode communication, do the following:

Steps

1. By default, the scanner is set to the serial mode.



If the scanner is not set to the serial mode, scan the barcode



after installing the driver.

2. In your system, go to **Device Manager** and expand the **Ports** section.
3. Search for **HoneyWell Gen7DB(COM xx)**.
4. Right-click **HoneyWell Gen7DB(COM xx)** and select **Properties**.
5. In the **Properties** window, go to **Power Management** and clear the **Allow the computer to turn off this device to save power** checkbox.
6. Click **OK** and close **Device Manager**.

Configure Dell Rugged Scanner module with USB

Steps

1. Restart your system, and launch Dell Rugged Control Center.
2. Go to **Settings > Barcode Settings**.
3. Go to **Scanner** and select one of the following **Scanner Source** from the drop-down menu:
 - **Dell Scanner Module**—This is the old scanner providing Magstripe reader along with Zebra scan engine.
 - **Dell Scanner Module with USB**—This is the new scanner providing Honeywell scan engine with 2x USB-A ports.
 - **Rear Camera**—Uses the system rear camera, if applicable.
 - **Front Camera**—Uses the system front camera.



To view the supported symbologies of Dell Rugged Scanner module, Dell Rugged Scanner module with USB, and camera-based scanners, see [Supported symbologies](#). You can also view the symbologies in the **Settings** section.

4. Select one of following scanner modes:
 - **Multi Scan Mode**—Scans the barcode continuously one after another.
 - **Single Scan Mode**—Scans only one barcode at a time and disconnects.
5. Select one of the following options in the prefix and suffix settings:
 - **None**—Displays the scanned data without any settings.
 - **Alphanumeric Character**—Specify an alphanumeric character to add with the scanned data.
 - **Recording**—Record any key or key combination to add along with the scanned data. For example, Record Enter in the suffix settings to capture the next scanned data in next line.

Results

The barcode scanner is configured and displayed in the **Feature List** section.

Use Dell Rugged Scanner with USB

Steps

1. To use the barcode scanner, do one of the following:
 - Go to **FEATURE LIST > Barcode**, and click.
 - Go to **Programmable Buttons** or **Edge Menus**, and select **Barcode Scanner**.

The **Barcode Scanner** is launched.

2. Open any input source such as Notepad, Excel, Word, and so on to capture the barcode.



Ensure that the cursor is positioned in the input source.

3. Place the barcode in front of the scanner. The barcode is captured in the input source.

Supported Symbolologies



The supported symbolologies can vary depending on your system.

Table 1. Supported Symbologies

Symbologies		Dell Rugged Scanner module	Dell Rugged Scanner module with USB	Camera based Scanner
1D	UPC (UPC-A/UPC-E)	Yes	Yes	Yes
	EAN (EAN-8/EAN-13)	Yes	Yes	Yes
	Code 39	Yes	Yes	Yes
	Code 128	Yes	Yes	Yes
	Code 11	Yes	Yes	No
	Code 93	Yes	Yes	No
	MIS Plessey/UK Plessey	Yes	Yes	No
	ITF	Yes	Yes	No
	Codabar/Telepen	Yes	Yes	No
	GS1 Databar (Omnidirectional/stacked)	Yes	Yes	Yes
2D	Interleaved 2 of 5	Yes	Yes	Yes
	QR Code	Yes	Yes	Yes
	Micro QR	Yes	Yes	No
	Datamatrix	Yes	Yes	No
	PDF417	Yes	Yes	No
	Micro PDF417	Yes	Yes	No
	Composite Codes	Yes	Yes	No
	TLC-39	Yes	Yes	No
	Aztec	Yes	Yes	No
	Postal Codes	Yes	Yes	No
	Maxicode	Yes	Yes	No
	Han Xin	Yes	Yes	No
	Grid Matrix	Yes	Yes	No
	DotCode	Yes	Yes	No
OCR	Yes	Yes	No	
Digimarc	Yes	Yes	No	
Media		Yes	Yes	No

For more information on the supported symbology, see [Supported Symbology for camera-based scanner](#) and [Supported Symbology for external scanners](#).

Supported Symbologies for External Scanners

Dell Rugged Scanner module and Dell Rugged Scanner module with USB supports the following symbologies:

Symbology	Variants
-----------	----------

1D Symbolologies	
Code 39	Standard
	Full ASCII
	Code 32 / Italian Pharmacode
	Trioptic
Code 128	Standard
	EAN-128
	ISBT-128
Codabar	Standard
	Ames
Code 11	Code 11 Standard
	Matrix 2 of 5
UPC/EAN	UPCA (W/WO supplemental)
	UPCE (W/WO supplemental)
	UPCE1 (W/WO supplemental)
	EAN-8 (W/WO supplemental)
	EAN-13 (W/WO supplemental)
	JAN-8 (W/WO supplemental)
	JAN-13 (W/WO supplemental)
	Bookland/ISBN
	ISSN
	Coupon Code
2 of 5	Interleaved 2 of 5
	Discrete 2 of 5
	IATA
Databar	Omnidirectional
	Limited
	Expanded
	Databar Coupon
Code 93	N/A
MSI	N/A
UK Plessey	N/A
Telepen	N/A
2D Symbolologies	
Postal Codes	Australia Post
	Japan Postal
	Canada Postal
	Netherlands KIX Code
	US Planet
	USPS 4CB/OneCode/Intelligent Mail
	UPU FICS Postal
	Mailmark

	French Lottery
	Posti4S
	Korean 3 of 5
PDF Standard	Standard
	Macro PDF
Micro PDF	Standard
	Macro Micro PDF
1D + 2D Symbologies	
Composite	CC-A
	CC-B
	CC-C
TLC-39	N/A
Matrix Symbologies	
Aztec	Standard
	Aztec Rune
Data Matrix	ECC 000-140
	ECC 200
	GS1 Data Matrix
QR	Standard
	Micro QR
	GS1 QR
Maxicode	N/A
Han Xin	N/A
Grid Matrix	N/A
DotCode	N/A
OCR Symbologies	
OCR	OCRA
	OCRB (Incl Passport, TravelDoc and Visa)
	MICR
	US CurrencySerial Number
Watermark Symbologies	
Digimarc N/A	Digimarc N/A

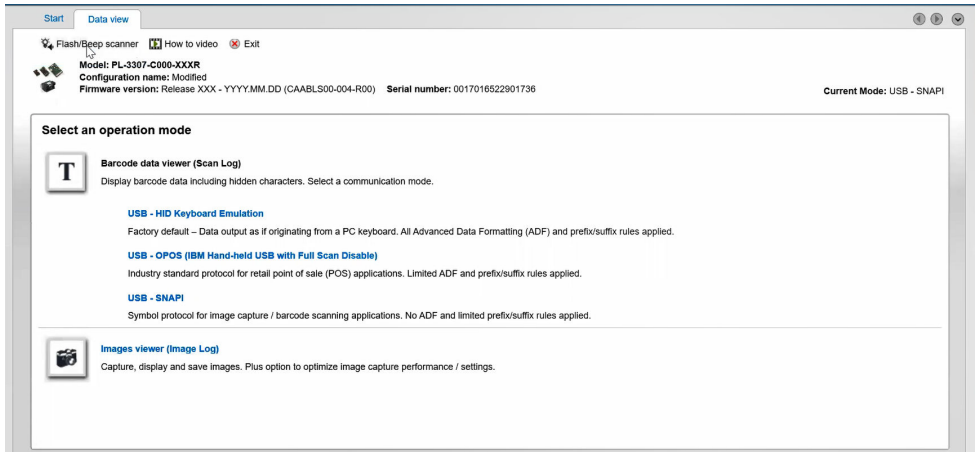
Troubleshooting the Barcode Scanner with USB

About this task

After configuration, if the barcode scanner is not displayed in the **Settings** section, perform the following:

Steps

1. Download and install any external scanner such as 123Scan Utility.
2. Open the scanner and wait for the drivers to update.
3. After the drivers are updated, go to the **Data view** tab, and select the required scanner.
The detailed information about the scanner is displayed.
4. To check if your scanner is working, click the **Flash/Beep scanner**.
You can hear a beep sound from the scanner.
5. Go to **Rugged Control Center**, and check for the barcode scanner in the **Settings** section.



6. Contacting Dell

About this task



If you do not have an active Internet connection, you can find contact information from your purchase invoice, packing slip, bill, or Dell product catalog.

Dell provides several online and telephone-based support and service options. Availability varies by country/region or region and product, and some services may not be available in your area. To contact Dell for sales, technical support, or customer service issues:

Steps

1. Go to www.dell.com/support.
2. Select your support category.
3. Verify your country/region or region in the **Choose a Country/Region** drop-down list at the bottom of the page.
4. Select the appropriate service or support link that is based on your need.