


Venue 8 Pro

User's Manual



Notes, Cautions, and Warnings

 **NOTE:** A NOTE indicates important information that helps you make better use of your tablet PC.

 **CAUTION:** A CAUTION indicates potential damage to hardware or loss of data if instructions are not followed.

 **WARNING:** A WARNING indicates a potential for property damage, personal injury, or death.

© 2013 Dell Inc. All rights reserved.

Information in this document is subject to change without notice. Reproduction of these materials in any manner whatsoever without the written permission of Dell Inc. is strictly forbidden.

Trademarks used in this text: Dell™, the DELL logo, and Venue™ are trademarks of Dell Inc.; Bluetooth® is a registered trademark owned by Bluetooth SIG, Inc. and is used by Dell under license; Apple is a trademark of Apple Inc., registered in the U.S. and other countries. Other trademarks and trade names may be used in this document to refer to either the entities claiming the marks and names or their products. Dell Inc. disclaims any proprietary interest in trademarks and trade names other than its own.

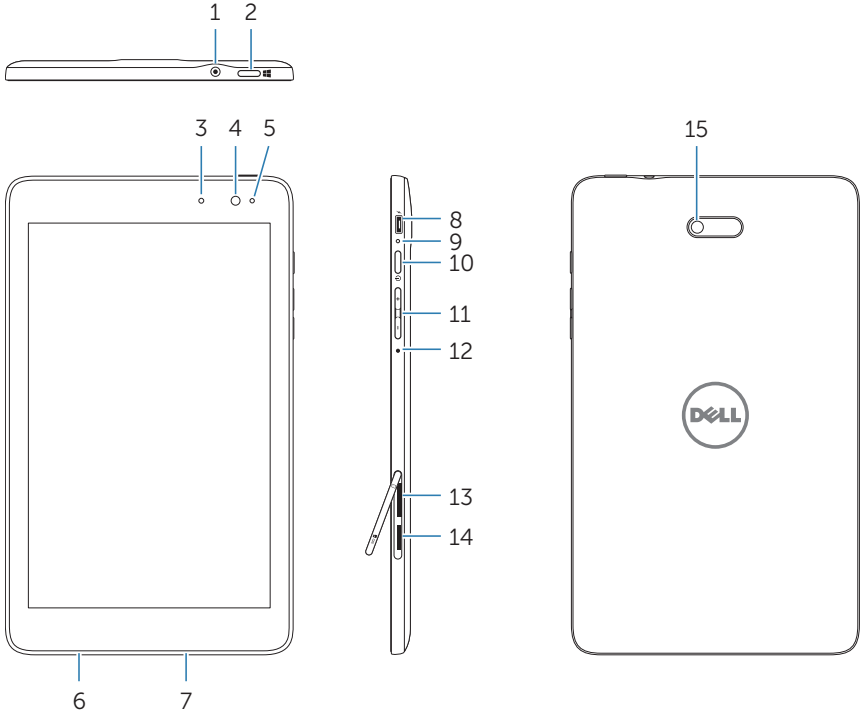
December 2013 Rev. A00

Contents

Features	5
Accessories	8
Setting Up Your Tablet	9
Charging the Tablet.....	9
Turning On Your Tablet.....	11
Turning Off Your Tablet.....	12
Turning Off the Screen	12
Inserting a microSD Card.....	13
Removing the microSD Card	14
Inserting a Micro-SIM Card.....	15
Removing the Micro-SIM Card	16
Using Headphones.....	17
Using Your Tablet	18
Wi-Fi Setting.....	18
Mobile broadband Setting.....	18
Bluetooth Setting.....	20
Gestures.....	21
Screen Orientation	24
Windows 8 Start Screen	24
Synchronizing Your Tablet.....	27
Refreshing Your Tablet.....	28
Resetting Your Tablet	29
Cleaning Your Tablet.....	30
Troubleshooting	31
Contacting Dell	35

Locating Your Service Tag and Express Service Code	36
Specifications.....	37
Glossary	39
Index	43

Features



Feature	Functionality
1 Audio port (3.5 mm)	Connect a headset, headphones, microphone, or other audio equipment to listen to stereo sound, record audio, or make calls.
2 Windows button	<ul style="list-style-type: none"> • Press to open the Windows Start screen. • Press for quick access to the most recently used app or most recently viewed screen.

Feature	Functionality
3 Status light	<ul style="list-style-type: none"> Lights up to indicate when either the front or rear camera is activated. Flashes when the tablet is powering on or shutting down.
4 Front-facing camera	<ul style="list-style-type: none"> Capture a front view picture or record videos. Use while making video calls.
5 Ambient-light sensor	Automatically adjusts the brightness of the display's backlight based on surrounding light levels.
6 Service Tag label	Provides the Service Tag/Express Service code needed for contacting Dell for customer service or technical support.
7 Speaker	Provides audio output.
8 Micro-USB port	<ul style="list-style-type: none"> Connect the supplied power adapter to provide power to the tablet and charge the battery. Connect USB devices, using an optional USB On-The-Go (OTG) dongle, for transferring data, music, photos, videos, and so on.
9 Battery-status light	Indicates the battery-charge status.
10 Power button	<ul style="list-style-type: none"> Press and hold to turn the tablet on or off. Press to turn the display on or off.
11 Volume buttons	Press to increase/decrease volume.
12 Microphone	<ul style="list-style-type: none"> Records sounds. Provides sound input while making calls using web-based apps.

Feature	Functionality
13 Micro-SIM card slot	Insert a micro-SIM card for mobile broadband connectivity.
14 microSD-card slot	Insert a microSD card to expand the tablet's storage capacity.
15 Rear camera	Captures pictures or videos.



NOTE: The front camera does not support zoom, face tracking, or the touch-to-focus feature.



NOTE: The rear camera supports continuous auto-focus and touch-to-focus, but does not support zoom or the face tracking feature.



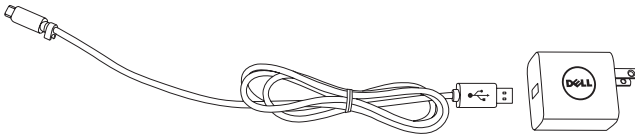
NOTE: The micro-USB port does not support connecting to a computer, or power sharing to connected USB devices.

Accessories

Your tablet supports the following accessories:

10 W power adapter and micro-USB cable

Provides power to your tablet and charges the battery.



Stylus (optional)

Allows you to draw shapes, select items and text, turn pages, write or sign documents, as well as use touch gestures on the touchscreen.



 **NOTE:** The stylus is sold separately and is not shipped with the tablet.

Setting Up Your Tablet

⚠ WARNING: Before you begin any of the procedures in this section, read the safety information that shipped with your tablet. For additional best practices information, see dell.com/regulatory_compliance.

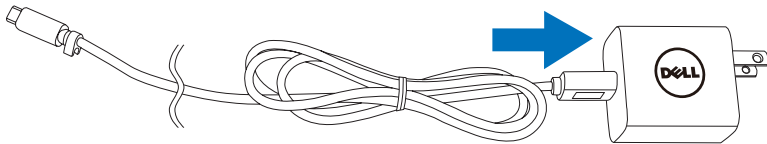
Charging the Tablet

⚠ CAUTION: Charge the battery in an ambient temperature of 0 °C to 35 °C.

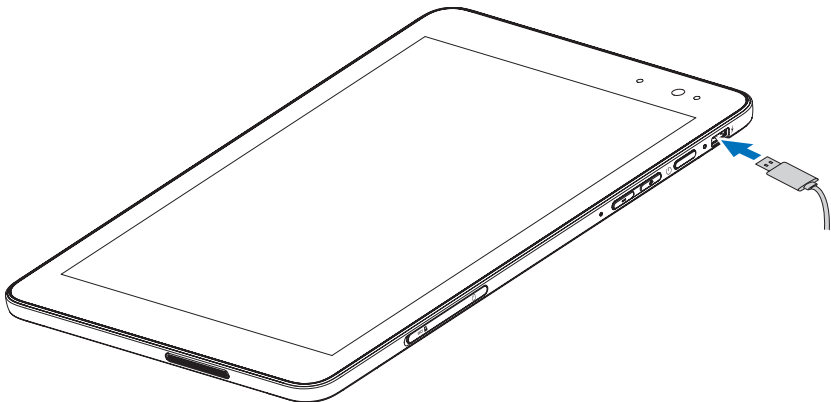
⚠ CAUTION: Use only the supplied power adapter to charge your tablet. Using unauthorized power adapters or micro-USB cables may severely damage your tablet.

📌 NOTE: The battery is not fully charged when you unpack your tablet.

- 1 Connect the power cable into the power adapter.



- 2 Connect the micro-USB cable to the micro-USB port on the tablet.



- 3 Connect the power adapter to an electrical outlet and charge the tablet until the battery is fully charged.



NOTE: A fully discharged battery takes about 4 hours to fully charge.

You can check the tablet battery charge status from:

Battery-charge light located on the right side of the tablet:

LED behavior	Description
Solid white	Battery is getting charged.
Solid amber	Tablet is on or in connected-standby mode, and the battery is low.
Off	Battery is not charging or battery is fully charged.
Flashing amber	Battery is critically low and does not have enough charge to power up. If you press the power button during this state, the battery-charge light turns on for 2 seconds and then turn off.


Battery icon displayed on the screen:

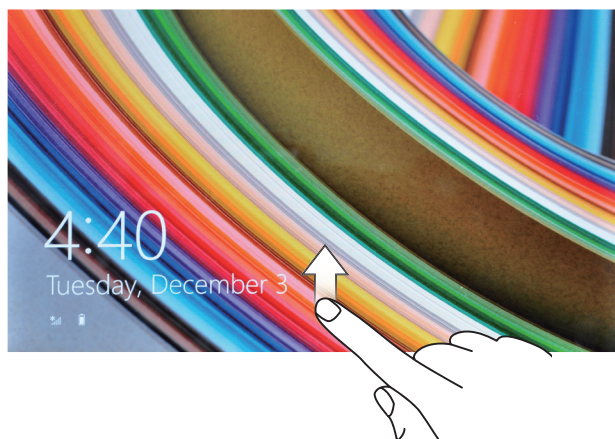
Battery icon	Description
	Tablet is connected to power supply and the battery is fully charged.
	Tablet is connected to power supply and the battery is getting charged.
	Tablet is running on battery power and the battery is discharging.
	Tablet is running on battery power and the battery charge is low.
	Tablet is running on battery power and the battery charge is critically low.

Turning On Your Tablet

When you turn on the tablet for the first time, you must finish Windows setup to start using your tablet. For more information, see the *Quick Start Guide*.

- 1 Press and hold the power button for 2 seconds to turn on your tablet. The lock screen appears.
- 2 Swipe-up your finger from the bottom of the display to switch to the login screen, and then enter password to log in to Windows.

 **NOTE:** If the login screen is not enabled, the Start screen appears after the lock screen.





The tablet is ready for use when the Windows Start screen is displayed.

Turning Off Your Tablet

Using the power button:

- 1 Press and hold the power button for at least 4 seconds.
- 2 Swipe-down the shutdown confirmation screen to the bottom edge of the display to turn off the tablet.

Using Charms:



- 1 Swipe-in from the right edge of the display to access Charms.
- 2 Touch **Settings**  → **Power**  → **Shut down** to turn off the tablet.


Turning Off the Screen

Using the power button:

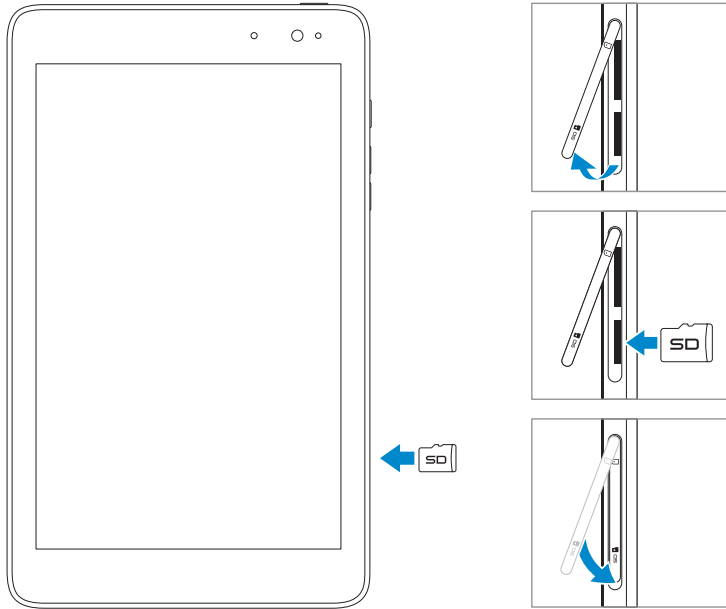
Press the power button to turn off the screen.

Using Charms:

- 1 Swipe-in from the right edge of the display to access Charms.
- 2 Touch **Settings**  → **Power**  → **Sleep** to turn off the screen.


 **NOTE:** If your tablet is in a standby state (tablet is on, but screen is off), press the power button or Windows button once to turn on the screen.


Inserting a microSD Card




- 1 Open the slot cover.
- 2 Align the microSD card so that the pins are pointed toward the card slot and are facing toward the rear of the tablet.
- 3 Push the microSD card into the card slot.
- 4 Close the slot cover.

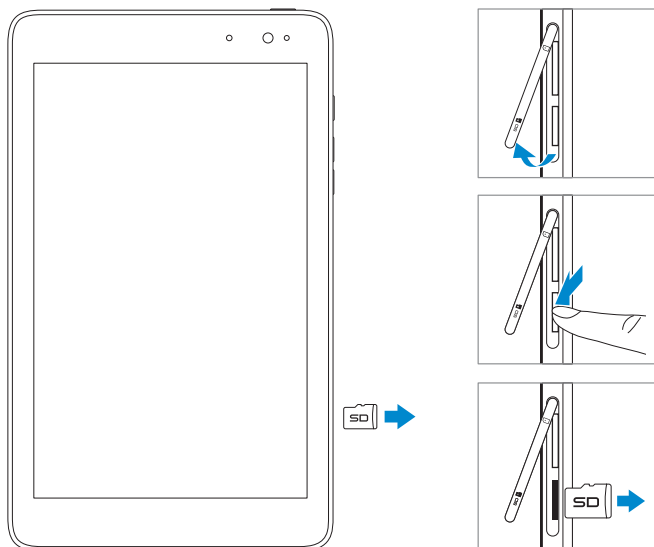
Removing the microSD Card

 **CAUTION:** Removing the microSD card while it is in use may cause data loss or result in application errors. Make sure all save operations to the microSD card are complete before removing the microSD card.

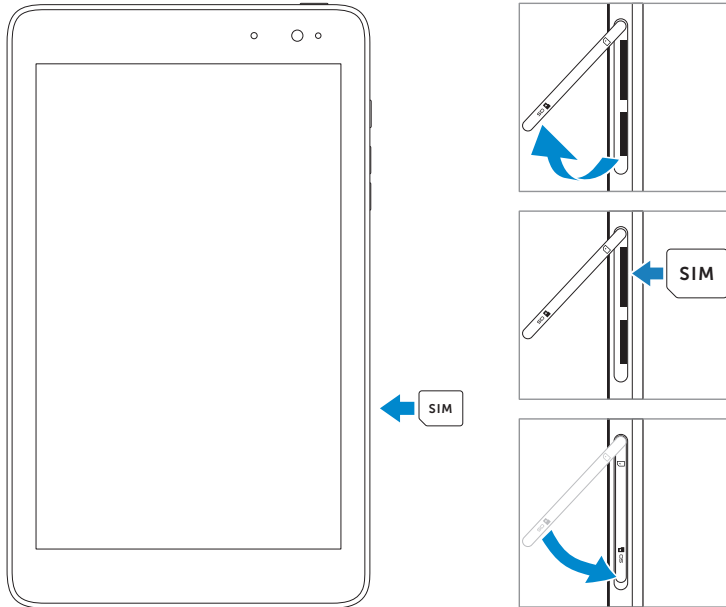
- 1 Touch the Desktop tile to enter Desktop mode.
- 2 Touch **Safely Remove Hardware**  in the notification area at the bottom-right corner of the screen.

 **NOTE:** If you do not see **Safely Remove Hardware** , touch **Show Hidden Icons** to display all icons in the notification area.

- 3 Touch **Eject SD Memory Card**. A message appears confirming that the microSD card can be safely removed. If a warning message appears stating the microSD card cannot be removed, make sure all data transfers involving the microSD card are complete.
- 4 Open the slot cover.
- 5 Press on the microSD card to release it.
- 6 Slide the card out after it pops out from the microSD-card slot.



Inserting a Micro-SIM Card

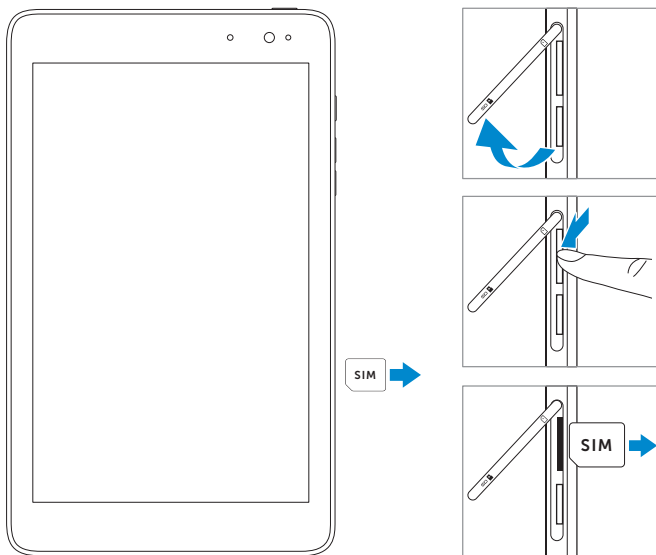


CAUTION: Inserting an incompatible SIM card, such as a nano-SIM card, into the micro-SIM card slot may damage the card or the tablet, and may corrupt data stored on the card.

- 1 Open the slot cover.
- 2 Align the micro-SIM card so that the pins are pointed toward the card slot and are facing toward the rear of the tablet.
- 3 Push the micro-SIM card into the card slot.
- 4 Close the slot cover.

NOTE: Make sure the micro-SIM card is inserted all the way into the card slot.

Removing the Micro-SIM Card



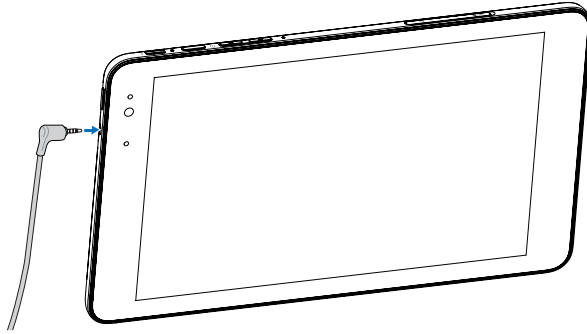
CAUTION: Removing the micro-SIM card when the tablet is turned on may cause data loss or damage the card. Make sure your tablet is turned off or the network connections are disabled.

- 1 Turn off your tablet. For more information on turning off your tablet, see [Turning Off Your Tablet](#).
- 2 Open the slot cover.
- 3 Press on the micro-SIM card to release it.
- 4 Slide the card out after it pops out from the micro-SIM card slot.

Using Headphones

You can connect a headset or headphones to the audio port of your tablet.

⚠ WARNING: Listening to loud music for an extended period of time can lead to hearing loss.



- 1 Connect headphones to the audio port (3.5 mm) on the tablet.
- 2 Insert the earphones in your ears and adjust the volume level to a comfortable level.



✍ NOTE: When you connect an audio device to the 3.5 mm audio jack, the integrated speakers on your tablet are muted automatically.

⚠ CAUTION: To prevent damage to the headphones when disconnecting it from the tablet, pull the connector and not the cable.



Using Your Tablet

Wi-Fi Setting

Turning On/Off Wi-Fi:



- 1 Swipe-in from the right edge of the display to access Charms.
- 2 Touch **Settings**  → **Network icon** .
- 3 Swipe **Wi-Fi** icon right or left to turn Wi-Fi on or off.

Connecting to a network:



- 1 Swipe-in from the right edge of the display to access Charms.
- 2 Touch **Settings**  → .
- 3 Select an available network from the list and touch **Connect**.

Mobile broadband Setting

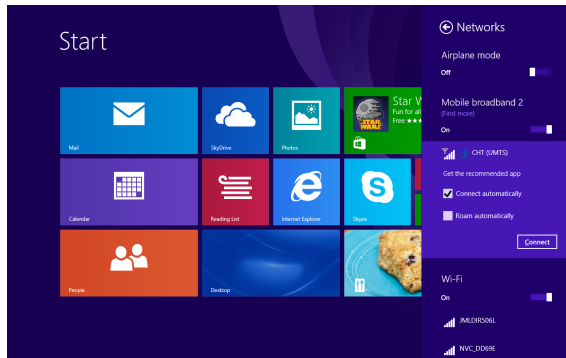
Turning On/Off mobile broadband:

- 1 Swipe from the right edge of the display to access Charms.
- 2 Touch **Settings**  → **Network icon** .
- 3 Swipe **Mobile broadband** icon right or left to turn mobile broadband on or off.

Connecting to a mobile broadband network:

- 1 Make sure an active micro-SIM card is inserted into the tablet. For more information on inserting a micro-SIM card, see [Inserting a Micro-SIM Card](#).
- 2 Swipe from the right edge of the display to access Charms.
- 3 Touch **Settings**  → .


- 4 Touch the icon of your mobile broadband carrier and touch **Connect**. The estimated data usage is shown once the mobile broadband network is enabled.



- ⚠ **CAUTION:** Depending on the SIM card setting, you may be required to enter the PIN code to unlock the card and connect to the network. If you enter the incorrect PIN code, your mobile broadband connection will be blocked.
- ✍ **NOTE:** Select **Connect automatically** if you want the tablet to connect to mobile broadband automatically each time the tablet starts up.
- ✍ **NOTE:** When both Wi-Fi and mobile broadband connections are available, the tablet gives priority to Wi-Fi networks. If you wish to force the tablet to connect to mobile broadband network, turn off Wi-Fi. For more information on turning off Wi-Fi, see [Wi-Fi Setting](#).

Bluetooth Setting


Turning On/Off Bluetooth:

- 1 Swipe-in from the right edge of the display to access Charms.
- 2 Touch **Settings**  → **Change PC settings** → **PC and devices** → **Bluetooth**.
- 3 Swipe **Bluetooth** icon right or left to turn Bluetooth on or off.

Pairing with Bluetooth-enabled devices:



NOTE: Bluetooth connection between your tablet and Apple devices are not supported.

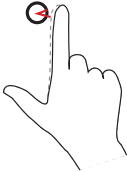
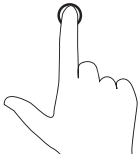
- 1 Swipe-in from the right edge of the display to access Charms.
- 2 Touch **Settings**  → **Change PC settings** → **PC and devices** → **Bluetooth**.
- 3 Select the Bluetooth device you want to pair with in the list of available devices and touch **Pair**.
- 4 If needed, verify that the Bluetooth passcode that appears on both the tablet and the Bluetooth-enabled device are the same.
- 5 Confirm the pairing process on both the tablet and device.

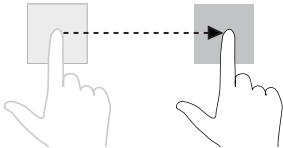
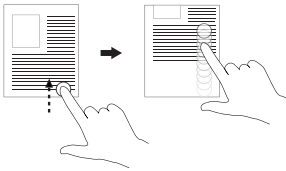
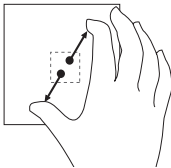


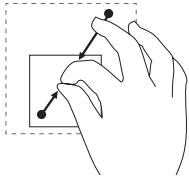
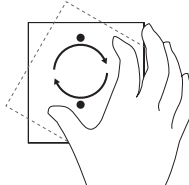
NOTE: Once a device has been successfully paired with the tablet it automatically connects with the tablet when Bluetooth is enabled on both tablet and device.

Gestures

Your tablet has a multi-touch display. You can touch the screen to operate the tablet.


Finger gestures	Allows you to:
<p>Touch Tap gently on the display with your fingertip.</p> 	<ul style="list-style-type: none">• Select items on the screen, including options, entries, images, and icons.• Start apps.• Touch buttons on the screen.• Input text using the on-screen keyboard.
<p>Touch and Hold Touch and hold your finger on the display.</p> 	<ul style="list-style-type: none">• Display detailed information about an item.• Open the context menu of an item to perform further actions.

Finger gestures	Allows you to:
<p>Drag</p> <ol style="list-style-type: none"> 1 Touch and hold your finger on an item on the screen. 2 Keeping your finger in contact with the display, move your fingertip to the desired location. 3 Take your finger off the display to drop the item in the desired location. 	<p>Move items such as images and icons on the screen.</p>
<p>Swipe or Slide</p> <p>Move your finger in a vertical or horizontal direction on the display.</p> 	<ul style="list-style-type: none"> • Scroll through the Start screen, web pages, lists, entries, photos, contacts, and so on. • Close an app. (Swipe the app to the bottom of the display.)
<p>Zoom in</p> <p>Touch the display with two fingers and then move the fingers apart.</p> 	<p>Enlarge the view of an image or web page.</p>





Finger gestures	Allows you to:
<p data-bbox="147 225 602 320">Zoom out Touch the display with two fingers and then move the fingers closer.</p>  A line drawing of a hand with two fingers touching a square object. A dashed square outline is shown around the object, indicating a zoomed-out view. The fingers are positioned at the top and bottom of the square, and their tips are moving towards each other.	<p data-bbox="602 225 1006 288">Reduce the view of an image or web page.</p>
<p data-bbox="147 547 602 671">Rotate Touch the display with two or more fingers and then move the fingers in a clockwise or counter-clockwise arc.</p>  A line drawing of a hand with two fingers touching a square object. A dashed square outline is shown around the object, rotated 90 degrees clockwise. Two circular arrows inside the square indicate the direction of rotation: one clockwise and one counter-clockwise.	<p data-bbox="602 547 1006 587">Rotate an object by 90 degrees.</p>

Screen Orientation

For optimal viewing experience, the screen orientation changes automatically to portrait or landscape depending on how you hold the tablet. You can disable automatic screen rotation and lock the screen in portrait or landscape mode.

 **NOTE:** Some apps may not support automatic screen rotation and are designed to work only in one orientation.

Locking the screen orientation

- 1 Change the screen to the desired orientation.
- 2 Swipe-in from the right edge of the display to access Charms.
- 3 Touch **Settings**  → **Screen** .
- 4 Touch , toggle to lock the screen orientation, or touch  toggle to unlock the screen orientation.





Windows 8 Start Screen

The Windows 8 Start screen displays a list of default and custom Live Tiles, which act as shortcuts to the installed apps.

Live Tiles on your Start screen change and update in real time to show news and sports updates, weather updates, social-networking feeds, and so on.

The tile-based user interface gives you direct access to your most recently used apps, emails, photos, music, videos, contacts, updates from social-networking sites, and frequently viewed websites. You can pin your favorite apps as tiles to customize the Start screen.

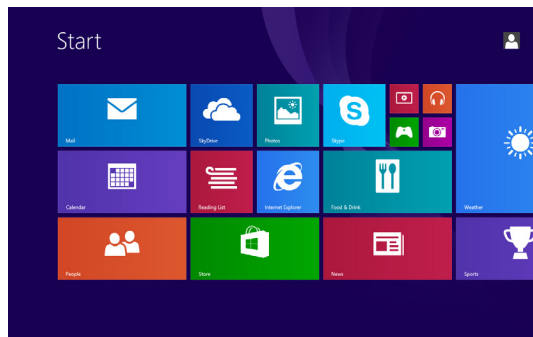
You also can personalize the Start screen by setting your favorite picture as the wallpaper.


 **NOTE:** Live Tiles can be added or removed by using Pin to taskbar , Pin to Start  or Unpin from Start  options.

Accessing the Start screen

When your computer boots into Windows, the Start screen appears by default. To access the Start screen from any other window or app, use any of the following methods.


- Press the Windows button.
- Swipe-in from the right edge of the display to access Charms, and then touch the **Start** icon .



If you are at the Start screen, pressing the **Start** icon  takes you to the most recently used app or most recently viewed screen.

 **NOTE:** The functionality of the **Start** icon  is same as Windows button.


Swipe left

- Swipe-in from the right edge of the display to show the charms. Charms provide access to the system commands, such as Start, Search, Share, Devices, and Settings options.
- From the Start screen, swiping left until you reach the end of the tile view brings up the Apps icon . Touch Apps icon to show an alphabetical list of all apps installed on your tablet.

Swipe right

- Swipe-in quickly from the left edge of the display to switch the currently running apps.
- Swipe-in slowly from the left edge of the display to show thumbnails of open apps.
- Swipe-in and out on the left edge of the display to show a list of the most recently used apps.

Swipe up/down



- From Start screen, swipe-in from the bottom or top edge of the display to show the **Customize** icon . Touch **Customize** to organize the tiles on your Start screen.
- Swipe-in from the top to the bottom of an app to dock or close the app.

For more information on using Windows 8 Start screen, see dell.com/windows8.

Synchronizing Your Tablet

Using a Microsoft account

If your computer has Microsoft Windows 8/8.1 installed, you can synchronize user settings of your tablet with your computer using a Microsoft account. When you sign in with your Microsoft account on your tablet, your settings, including internet browser history, app settings, and personal files, are synchronized with other Windows 8/8.1 tablets and computers on which you use the same Microsoft account.

- 1 On the tablet, access Charms and click **Settings**  → **Change PC Settings** → **Accounts** → **Your account** → **Connect to a Microsoft Account** to switch your computer local account to your Microsoft account.
- 2 Click **Settings**  → **Change PC Settings** → **SkyDrive** → **Sync settings** to see the options for synchronizing your data and settings.

Copy music, photos, and videos

- 1 Connect your tablet to a USB storage device with a micro-USB to standard USB conversion cable, then transfer files to or from the USB storage device.
- 2 After transferring files, use the **Safely Remove Hardware** wizard to remove the USB storage device.



NOTE: The micro-USB to standard USB conversion cable is sold separately and is not shipped with the tablet.




NOTE: Files can also be shared with another device via Bluetooth. Before transferring files, make sure that Bluetooth is enabled on both the tablet and the paired device, and that the tablet is compatible with the Bluetooth-enabled device. For more information on pairing with Bluetooth devices, see [Bluetooth Setting](#). For file transfer details and Bluetooth compatibility, please refer to the software documentation on both devices.

Refreshing Your Tablet

Refreshing your tablet restores Windows to original factory settings without deleting any of your personal files, apps installed from Windows Store, or personalization settings.

To restore your tablet:

- 1 Swipe-in from the right edge of the display to access Charms.
- 2 Touch **Settings**  → **Change PC settings** → **Update and recovery** → **Recovery**.
- 3 Touch **Get started** under **Refresh your PC without affecting your files**.
- 4 Read the warning and touch **Next**.



NOTE: Apps installed from the Windows Store are automatically reinstalled after the refresh is complete. Apps installed from sources other than the Windows Store are removed and have to be manually installed. A list of apps removed during this process is created on the desktop after the process is complete.



NOTE: After refreshing your tablet, apps installed from the Window Store are automatically reinstalled using a mobile broadband or Wi-Fi internet connection. To minimize data consumption over your broadband connection and prevent excessive charges from your carrier, it is highly recommended that you turn off the mobile broadband connection and reinstall the apps using a Wi-Fi connection. For more information on turning off the mobile broadband connection, see [Mobile broadband Setting](#).


Resetting Your Tablet






CAUTION: Resetting your tablet erases all data from your tablet, including your account configuration, apps, music, pictures, files, and so on. Make sure that you back up all the required data before you proceed.

Resetting your tablet returns Windows to original factory settings.

To reset your tablet:

- 1 Swipe-in from the right edge of the display to access Charms.
- 2 Touch **Settings**  → **Change PC settings** → **Update and recovery** → **Recovery**.
- 3 Touch **Get started** under **Remove everything and reinstall Windows**.
- 4 Read the warning and touch **Next**.

Cleaning Your Tablet

-  **CAUTION:** Before you clean your tablet, disconnect all the cables and turn off the tablet. Clean your tablet with a soft cloth dampened with water. Do not use liquid or aerosol cleaners, which may contain flammable substances.
 -  **CAUTION:** To avoid damaging the tablet or display, do not spray cleaning solution directly onto the display. Only use products specifically designed for cleaning displays and follow the instructions included with the product.
 -  **CAUTION:** Do not clean the keyboard (sold separately) with a moist cloth.
- 1** Turn off your tablet. For more information on turning off your tablet, see [Turning Off Your Tablet](#).
 - 2** Disconnect any attached devices, headphones, and speakers from the tablet and from their electrical outlets.
 - 3** Moisten a soft, lint-free cloth with either water or a display cleaner, and wipe the surface of the tablet until it is clean. Do not allow water from the cloth to seep down to the tablet ports or buttons.

Troubleshooting

Battery problem

Problems	Possible causes	Possible solutions
Battery does not charge		<ol style="list-style-type: none">1 Check the cable, connectors and Dell power adapter to ensure proper connectivity.2 Verify that the wall outlet is functioning by connecting another device.
	The tablet's temperature is below 0 °C (32 °F) or higher than 35 °C (95 °F).	Charge the battery in an ambient temperature between 0 °C to 35 °C (32 °F to 95 °F)
	The battery or power adapter is damaged.	Contact a Dell authorized reseller to replace the battery or power adapter.
Battery drains quickly even when the tablet is in Standby mode	If the tablet is not in the range of a network it can connect to, the tablet continues to send out signals to locate a base station and drains the battery.	<ul style="list-style-type: none">• Temporarily turn off the tablet.• Move the tablet in range of a network it can connect to, or temporarily turn off the wireless connection on your tablet.

System problem

Problems	Possible causes	Possible solutions
Tablet does not turn on	The battery is completely discharged.	<ol style="list-style-type: none"> 1 Charge the tablet for at least 4 hours. 2 Press and hold the power button for 2 seconds.
Tablet does not turn off		Press and hold the power button for 10 seconds to perform a hard shut down.
Tablet locks up		Press and hold the power button for 10 seconds to perform a hard shut down.
Tablet is not responding or behaving unexpectedly		<ol style="list-style-type: none"> 1 Reboot the tablet. See Turning Off Your Tablet and Turning On Your Tablet. 2 Refresh the tablet. See Reset your tablet. 3 Contact Dell's support service. See dell.com/support.
Tablet cannot boot into Windows		Contact Dell's support service. See dell.com/support .
Software or feature is not working as expected		Software updates may have been downloaded in the background. Restart your tablet (Swipe-in from the right edge of the display to access Charms and touch Settings → Power → Restart).

Network problem

Problems	Possible causes	Possible solutions
No wireless connection		<ol style="list-style-type: none"> 1 Check if the wireless radio is on. See Wi-Fi setting. 2 Try to get closer to the wireless access point. 3 Reset the wireless router if using a private network; open the browser to view the landing page if using a public network.
No mobile broadband connection		<ol style="list-style-type: none"> 1 Check if the mobile broadband is on. See Mobile broadband Setting. 2 Move your tablet to a different location for better signal reception.
	The mobile broadband has been capped.	Stop using mobile broadband until the next billing cycle or contact your carrier to change your broadband plan.
Limited mobile broadband connection	The mobile broadband network is temporarily unavailable.	<ul style="list-style-type: none"> • Move your tablet to a different location. • Reboot the tablet. See Turning Off Your Tablet and Turning On Your Tablet.
	Excessive amount of downloaded/uploaded data.	Switch to Wi-Fi.

Problems	Possible causes	Possible solutions
Slow Internet connections	The signal strength is not strong enough.	Move your tablet to a different location for better signal reception.
Unable to pair with a Bluetooth device		<ol style="list-style-type: none"> 1 Make sure Bluetooth is enabled and follow proper Bluetooth pairing instructions. See Bluetooth Setting. 2 Contact Dell's support service. See dell.com/support.

Touchscreen problem


Problems	Possible causes	Possible solutions
Touchscreen responds slowly or improperly	<ul style="list-style-type: none"> • The screen is dirty. • A protective cover may prevent the tablet from recognizing your inputs. 	<ul style="list-style-type: none"> • Moisten a soft, lint-free cloth with either water or a display cleaner, and wipe the surface of the tablet until it is clean. Do not allow water from the cloth to seep down to the tablet ports or buttons. • Remove any protective covers from the touchscreen.

Contacting Dell

To contact Dell for sales, technical support, or customer service issues:


- 1 Go to dell.com/contactdell.
- 2 Select the appropriate service or support link based on your requirement or choose the method of contacting Dell that is convenient for you.

Dell provides several online and telephone-based support and service options. Availability varies by country and product, and some services may not be available in your area.

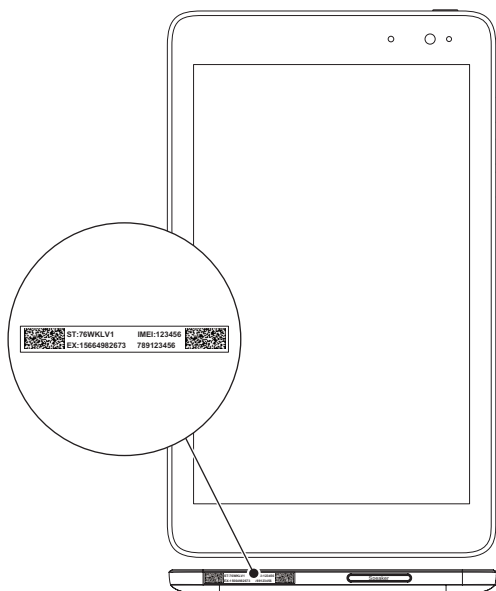
 **NOTE:** If you do not have an active internet connection, you can find contact information on your purchase invoice, packing slip, bill, or Dell product catalog.

Locating Your Service Tag and Express Service Code

You must provide the Service Tag/Express Service Code of your tablet when contacting Dell for customer service or technical support.

 **NOTE:** The telephone systems prompts you to enter the Express Service Code that helps in routing your call efficiently.

The Service Tag and Express Service Code for your tablet is located on a label at the bottom of the tablet.



Specifications

Dimensions and Weight

Height	216.20 mm (8.51 inches)
Width	130 mm (5.11 inches)
Thickness	9 mm (0.35 inches)
Weight	406g +/-5g (0.90lb +/-0.01lb)

Environmental requirements

Temperature range:	
Operating	0°C to 35 °C (32°F to 95 °F)
Non-operating	-40°C to 65 °C (-40°F to 149 °F)
Relative humidity (maximum):	
Operating	10% to 90% (noncondensing)
Non-operating	5% to 95% (noncondensing)
Altitude (maximum, unpressurized):	
Operating	-15.20 m to 3048 m (-50 ft to 10,000 ft)
Storage	-15.20 m to 10,668 m (-50 ft to 35,000 ft)

Ports and Connectors

Audio	One headset/audio-out port
microSD card	One microSD-card slot
USB	One micro-USB 2.0 port

Display

Type	8" WXGA with multi-point capacitive touch
Resolution (maximum)	1280 x 800
Aspect ratio	16:9
Brightness (maximum)	400 nits
Viewing angle	Symmetrical 80 degrees
Contrast ratio	700:1
Color depth	24 bit/pixel

Power Adapter

Input voltage	100-240 VAC
Input current (maximum)	0.50 A
Input frequency	50-60 Hz
Output power	10 W
Output current	2 A
Rated output voltage	5 VDC
Temperature range:	
Operating	0°C to 40°C (32°F to 104 °F)
Storage	-40°C to 70 °C (-40°F to 158 °F)

Camera

Resolution:	
Front-facing camera	1.2 MP (16:9)
Rear-facing camera	5 MP (16:9)

Glossary

This section provides information about the terms used in this document that is for informational purposes only and may or may not describe features included with your tablet.

A

A - ampere - A measure of the amount of electric charge passing a point in an electric circuit.

AC - alternating current - The form of electricity that powers your tablet when you plug the AC adapter power cable in to an electrical outlet.

ambient light sensor - A feature that helps to control the display brightness.

B

Bluetooth - a wireless technology for exchanging data, communicating with a keyboard or mouse, listening to music and creating a wireless personal area network over a short distance between devices. The connection may be restricted according to the Bluetooth profiles of each device. To be marketed as a Bluetooth device, it must be qualified to standards defined by the Bluetooth SIG.

C

Charms - a Microsoft Windows 8/Windows RT term for the icons that appear when you swipe-in from the right edge of the display. It provides quick access to the commonly system commands, including search, share, Start, devices and settings options.

connected-standby mode - A power management mode that enables a powered processor to consume minimal battery power when it is not being used and its display is off, that is, the system is powered on but the display is off. In this state, when a user presses a key, Windows button or touches the screen, the system immediately transitions into the operational active mode.

D

device - Hardware such as a disk drive, printer, or keyboard that is installed in or connected to your tablet.

E

Email - Electronic mail - a method of exchanging digital messages from an author to one or more recipients via the Internet. Email servers accept, forward, deliver and store messages, and neither the users nor their computers are required to be online simultaneously.

G

GRMS - A unit of acceleration caused by the force of gravity. The grms value is typically used to express the overall energy of a particular random vibration event and is a statistical value used in mechanical engineering for structural design and analysis purposes.

H

Hz - Hertz - A unit of frequency measurement that equals 1 cycle per second. Computers and electronic devices are often measured in kilohertz (KHz), megahertz (MHz), gigahertz (GHz), or terahertz (THz).

M

microSD - micro-Secure Digital - a smaller size of SD which is a removable flash memory card used for storing information in portable devices, such as mobile phones, digital cameras, and tablet computers. The standard size of SD is 32 x 24 x 2.1 mm and microSD is 15 x 11 x 1 mm.

Micro-SIM card - subscriber identification module - A smaller size of the portable memory chip which stores data that allows a device (such as a mobile phone or personal computer) to operate on a mobile communications network.

Micro-USB - universal serial bus - A hardware interface for a low-speed device such as a USB-compatible scanner, set of speakers, printer, broadband devices, imaging devices, or storage devices. Devices are plugged directly in to a 5-pin socket on your tablet, both to communicate and to supply electric power. The micro-USB port can be connected to a standard USB port using micro-USB to USB cable.

R

resolution - The sharpness and clarity of an image produced by a printer or displayed on a monitor. The higher the resolution, the sharper the image.

S

Service Tag - A bar code label on your tablet that identifies your tablet when you call Dell for customer service or technical support.

shortcut - An icon that provides quick access to frequently used programs, files, folders, and drives. When you place a shortcut on your Windows Start screen, the home screen of Windows 8 is made up of 'Live Tiles', and touch the tile, you can open its corresponding folder or file without having to find it first. Shortcut tiles do not change the location of files.

sleep mode - A power management mode that shuts down all unnecessary computer operations to save energy.

V

V - volt - The measurement of electric potential or electromotive force. One V appears across a resistance of one ohm when a current of one ampere flows through that resistance.

VAC - voltage in alternating current - A mathematics of AC voltages, as alternating currents are caused by alternating voltages.

VDC - voltage in direct current - A measurement in a DC system. The current flows directly, in one direction in the circuit, and flows at a specific, constant voltage.

W

W - watt - The measurement of electrical power. One W is 1 ampere of current flowing at 1 volt.

wallpaper - The background pattern or picture on the Windows desktop.

Wi-Fi - A technology as a synonym for WLAN (wireless local area network) connects to the Internet when within range of a wireless network.

WXGA - wide-aspect extended graphics array - A video standard for video cards and controllers that supports resolutions up to 1280 x 800.

Index

A

Accessory

- Micro-USB cable, 8
- Power adapter, 8

B

Battery

- Tablet battery status, 10
- Tablet charge, 9

Bluetooth setting, 20

Button

- Power, 6
- Volume up/down, 6

C

Charging

- Tablet, 9

Charms, 25

Connection

- Bluetooth, 20
- Mobile broadband, 18
- Wi-Fi, 18

G

Gestures

- Drag, 22
- Rotate, 23
- Swipe or Slide, 22
- Touch, 21
- Touch and Hold, 21
- Zoom in, 22
- Zoom out, 23

L

Lock screen, 11

Login screen, 11

M

microSD card

- Insert, 13
- Remove, 14

Micro-SIM card

- Insert, 15
- Remove, 16

Mobile broadband setting, 18

S

Screen

- Lock screen, 11
- Login screen, 11
- Swipe left , 25
- Swipe right, 26
- Swipe up/down , 26
- Turn off/on, 12

Service tag

- Locating, 36

Start icon

- Function, 25

Synchronize with computer, 27

T

Tablet

- Charge, 9
- Clean, 30
- Overview, 5
- Refresh, 28
- Reset, 29
- Setting, 9
- Turn off, 12
- Turn on, 11

Touchscreen Display

- Orientation, 24
- Turn off/on, 12

Troubleshooting

- Battery, 31
- Network, 33
- System, 32
- Touchscreen, 33

W

Wi-Fi setting, 18

Windows button

- Location, 5

Windows Start screen, 24