

# Deploying OpenManage Enterprise (OME)- Tech Release Virtual Appliance on different hypervisors

This Dell EMC technical white paper describes the process of deploying OME-Tech Release as a virtual appliance on hypervisors such as VMware, Microsoft Hyper-V, and KVM.

Dell Engineering  
January 2018

## **Author**

Mark E. Scott, Jr.

## Revisions

Date	Description
Jan 2018	Initial Release

The information in this publication is provided “as is.” Dell Inc. makes no representations or warranties of any kind with respect to the information in this publication, and specifically disclaims implied warranties of merchantability or fitness for a particular purpose.

Use, copying, and distribution of any software described in this publication requires an applicable software license.

Copyright © January-2018 Dell Inc. or its subsidiaries. All Rights Reserved. Dell, EMC, and other trademarks are trademarks of Dell Inc. or its subsidiaries. Other trademarks may be the property of their respective owners. Published in the USA.

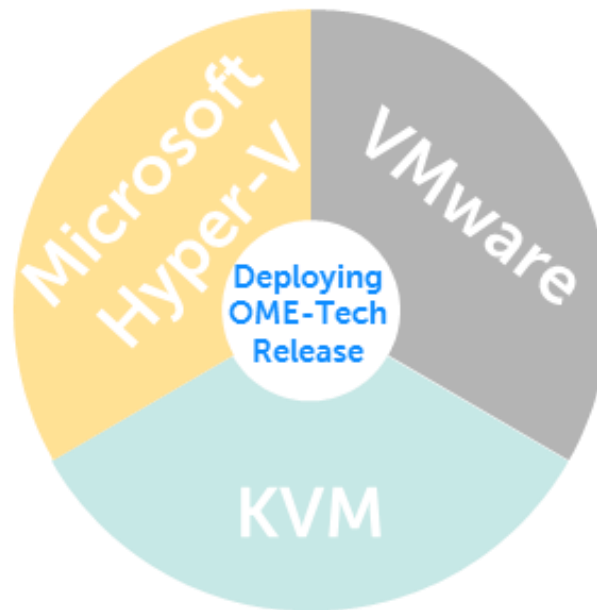
Dell believes the information in this document is accurate as of its publication date. The information is subject to change without notice.

# Contents

Revisions.....	2
Executive overview .....	4
Installation Notes .....	4
1 Do's and Don'ts for deploying OpenManage Enterprise.....	5
1.1 Do .....	5
1.2 Don't .....	5
2 Deploying OpenManage Enterprise-Tech Release on Microsoft Hyper-V (Windows Server 2016 or Windows 10)...	6
2.1 Deploying OpenManage Enterprise-Tech Release on Microsoft Hyper-V.....	9
2.1.1 Manually creating VM under Hyper-V (required for Windows Server 2012 / Windows 8 and earlier) .....	9
3 Deploying OpenManage Enterprise-Tech Release on VMWare vSphere .....	15
3.1 Prerequisites.....	15
3.2 KVM.....	15
4 Common tasks after turning on the VM.....	16
Conclusion .....	20
A Technical support and resources .....	21

## Executive overview

OpenManage Enterprise (OME)-Tech Release is designed to be deployed as a virtual appliance for a variety of supported hypervisors (VMware, Hyper-V, and KVM). In general, it can be used in environments that support loading VMDK or VHD formats, as long as you have the minimum system resources required (4 virtual CPUs and 8 gigabytes of RAM).



## Installation Notes

- OME is deployed as a virtual appliance, compared to OpenManage Essentials, which is installed into an environment already running Microsoft Windows.
  - All operating system maintenance is performed by OME, including even the network configuration.
  - A single network adapter is officially supported—using more than one is not supported in the current OME-Tech Release version at the time of release of this technical white paper.
  - Ensure that all necessary subnets are routable to the interface given to the OME appliance.
- The OME appliance is not functional until you have accessed the TUI (Text User Interface) and set the admin password.
- During first boot, by default, OME directs to a static IP—this must be changed to match network configurations appropriate to the customers' environment.

# 1 Do's and Don'ts for deploying OpenManage Enterprise

## 1.1 Do

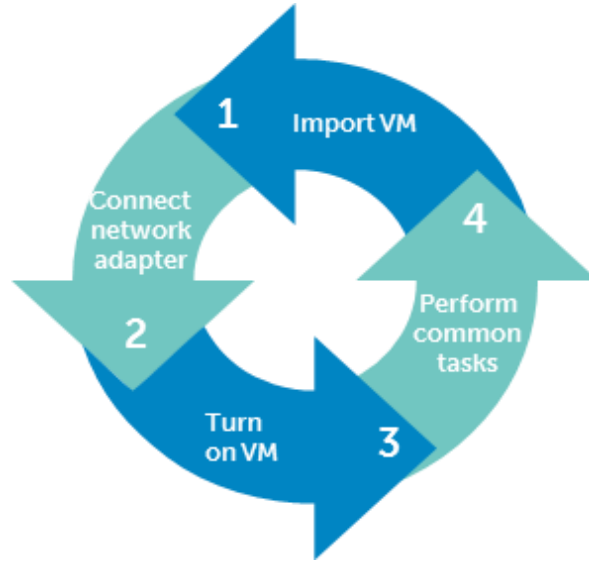
- Allocate memory and virtual CPUs to increase performance. OME is configured to utilize additional resources added to the VM to increase performance.
- Locate OME on a hypervisor with local or fast storage. Faster storage supports receiving and processing a larger number of incoming events.
- Ensure ports are opened between OME and the devices you want to manage.

## 1.2 Don't

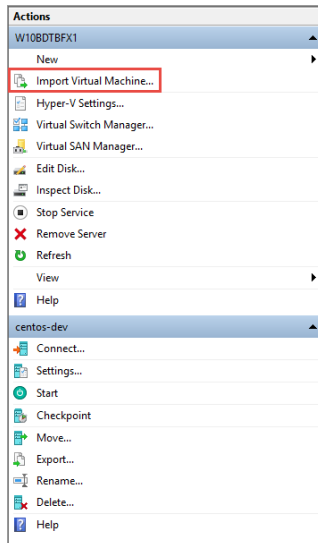
- Add additional network adapters. OME currently supports only a single virtual NIC.
- Leave unnecessary VM snapshots, which result in performance degradation.
- Decrease memory below 8 gigabytes or the number of CPUs to less than four.

## 2 Deploying OpenManage Enterprise-Tech Release on Microsoft Hyper-V (Windows Server 2016 or Windows 10)

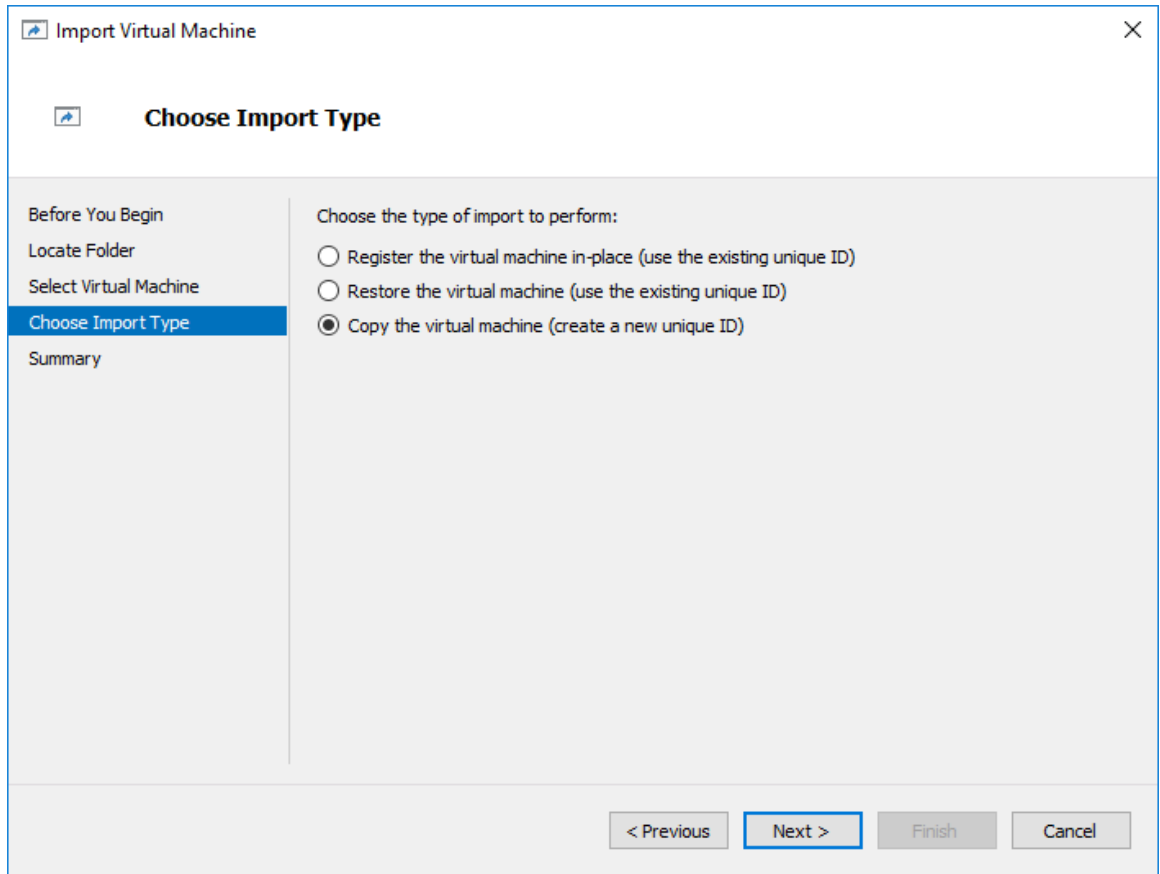
It is recommended that you utilize the Import Virtual Machine feature so the appliance is preconfigured with minimum recommended configurations.



1. From the **Actions** menu, select **Import Virtual Machine**.

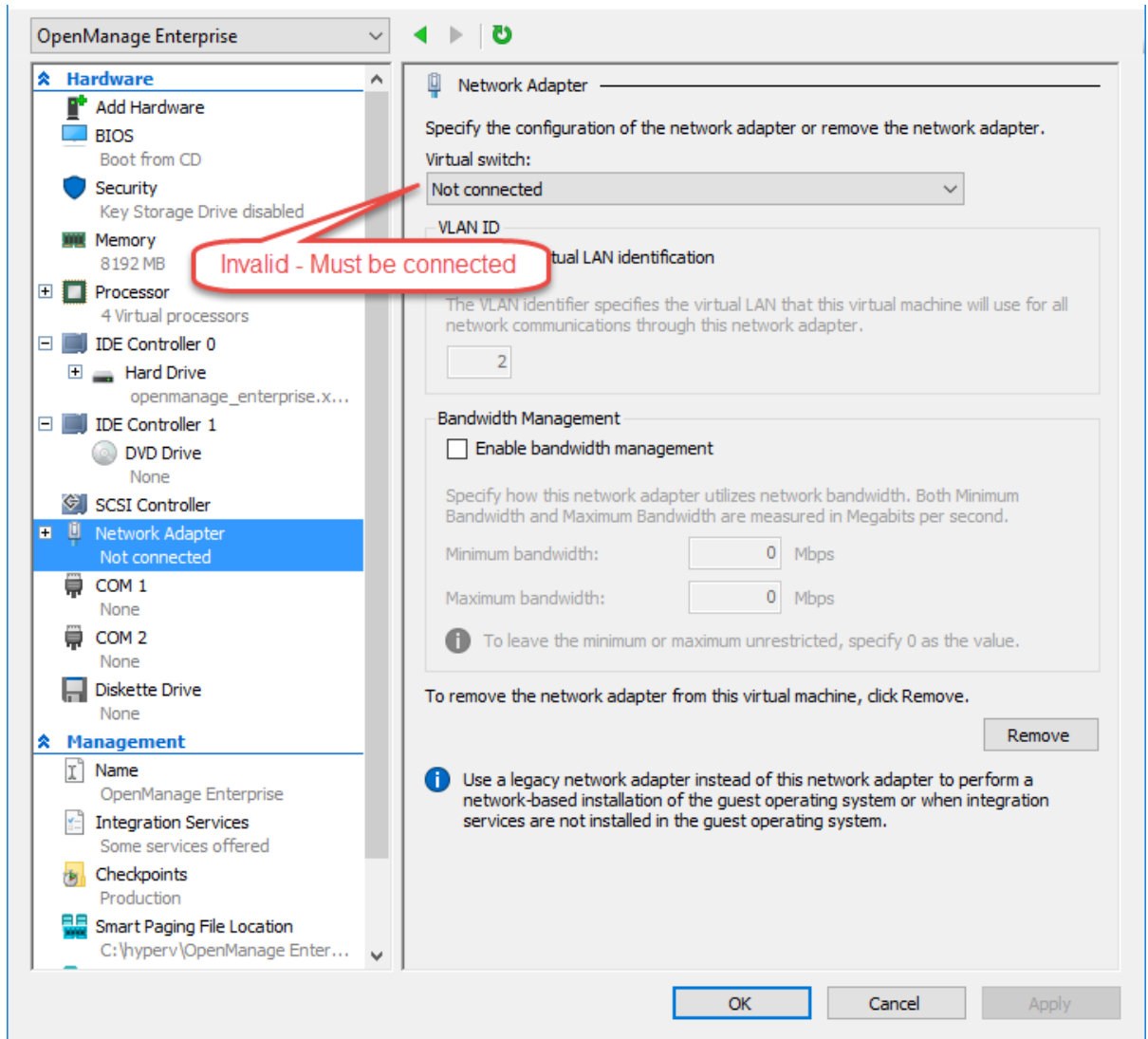


2. In the **Import Virtual Machine** dialog box, select **Copy the virtual machine (create a new unique ID)**.



3. Click **Finish**. Wait till the VM is imported (deployed).

4. Open VM configuration and ensure that the network adapter is connected to a valid network. Failing to do this can result in a fatal condition of the VM.



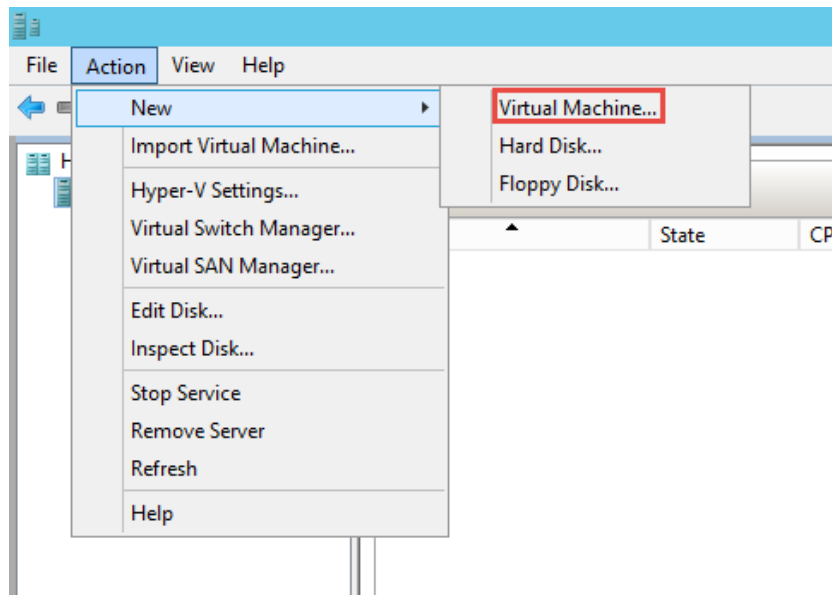
5. Turn on the VM.
6. Complete the tasks in to [Common tasks after turning on the VM](#).



## 2.1 Deploying OpenManage Enterprise-Tech Release on Microsoft Hyper-V

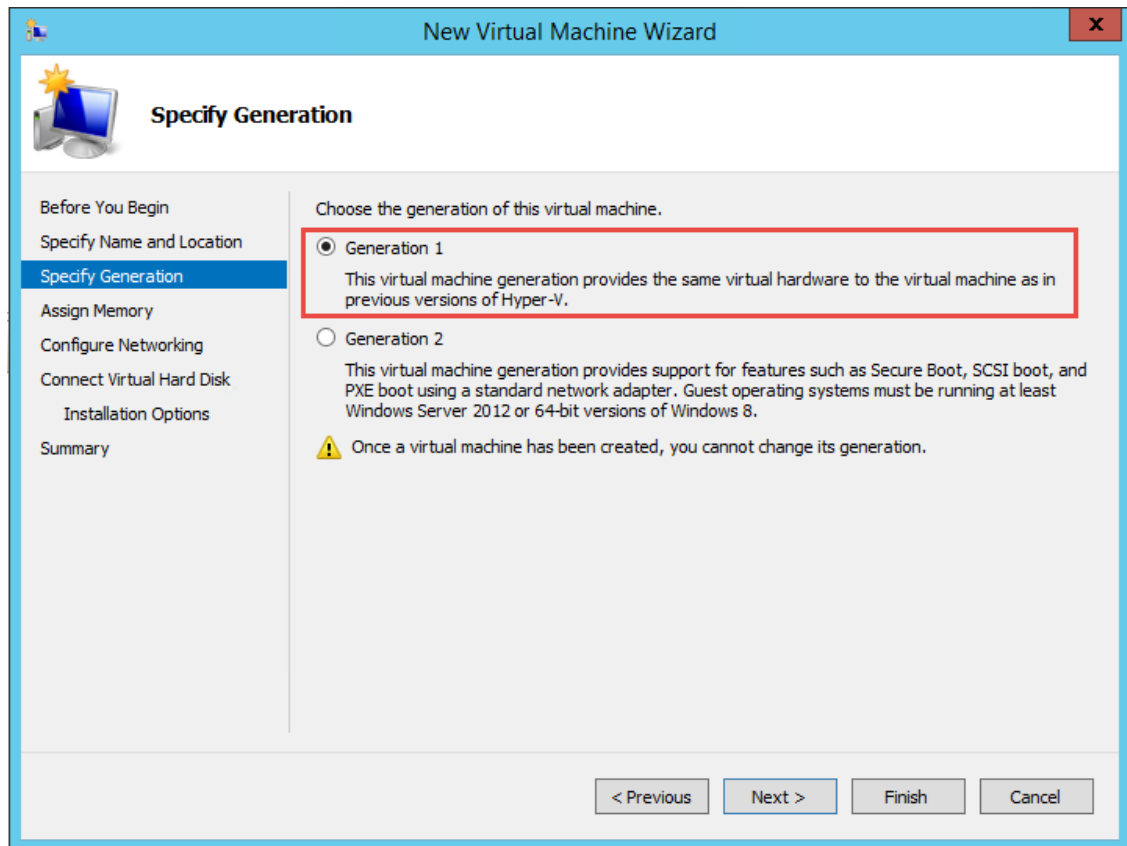
### 2.1.1 Manually creating VM under Hyper-V (required for Windows Server 2012 / Windows 8 and earlier)

1. Extract the `openmanage_enterprise_vhd_format.zip` file, and move/copy the enclosed VHD file into the appropriate location on your system where you wish to store the OpenManage Enterprise virtual drive.
2. Start Hyper-V Manager.
3. Click **Action** → **New** → **Virtual Machine**.



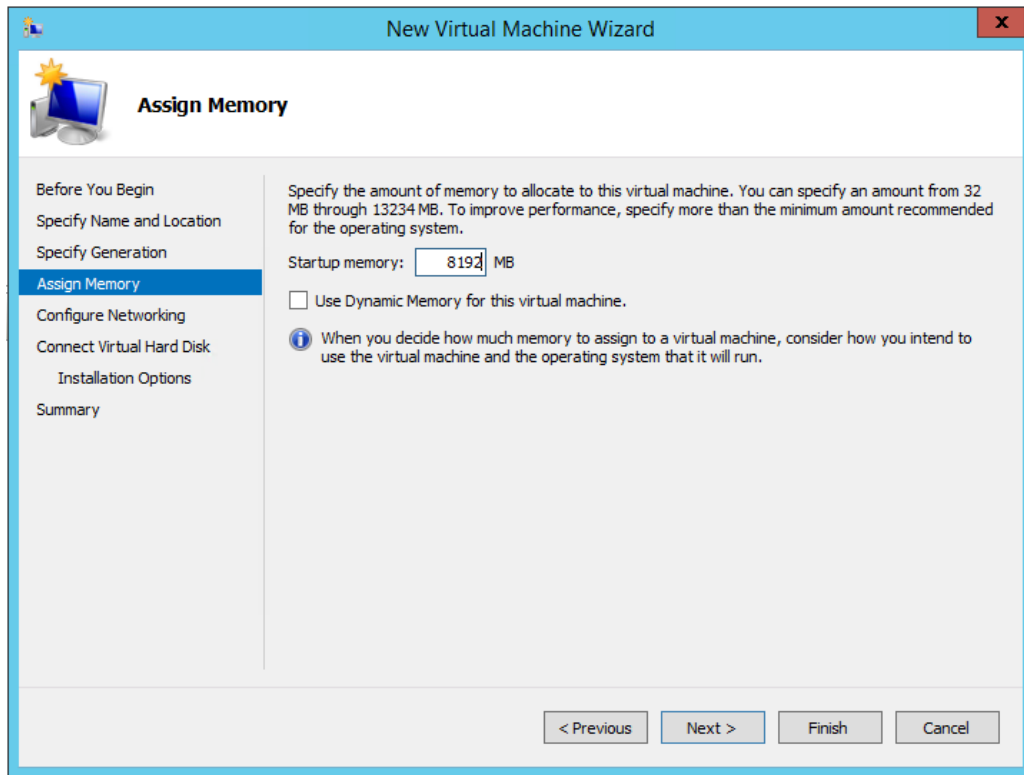
4. In the **Specify Name and Location Screen** dialog box, select the VM name and storage location appropriately for your environment.
5. Click **Next**.

6. In the **Specify Generation** dialog box, select **Generation 1**. Currently, the OpenManage Enterprise-Tech Release does not support Generation 2.



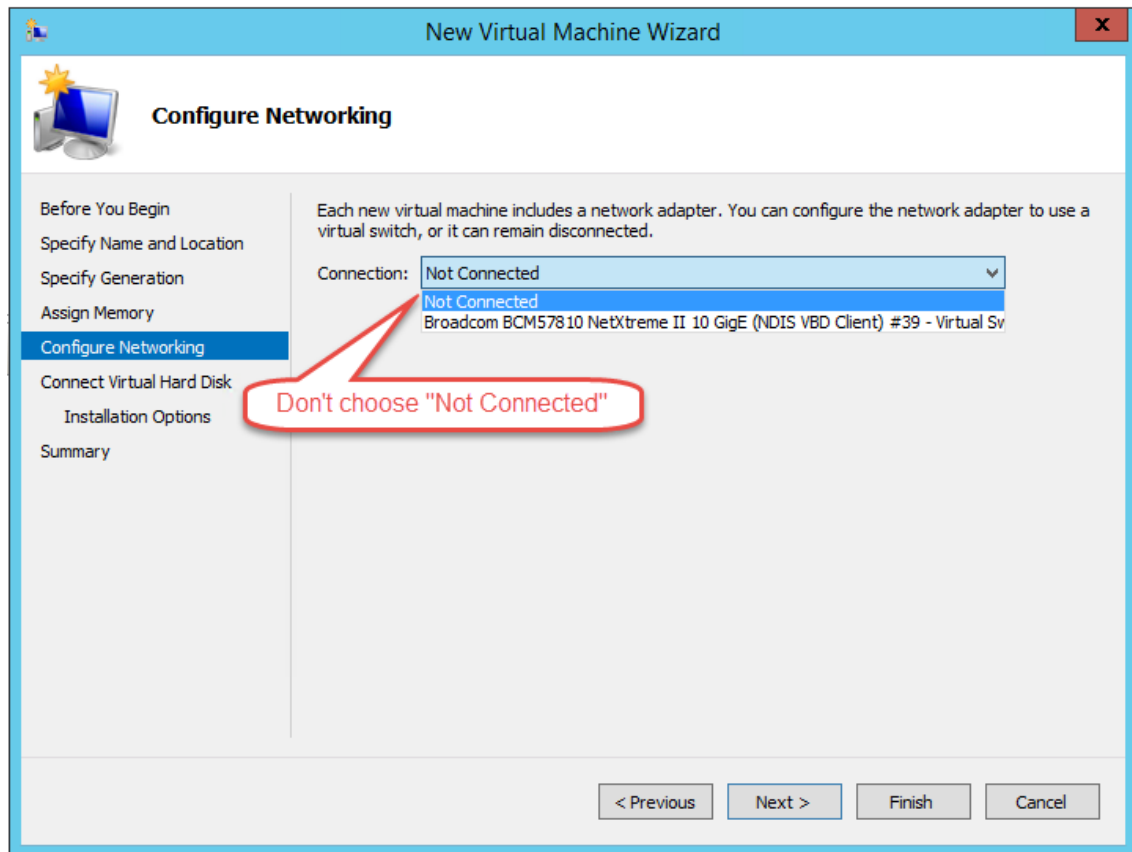
7. Click **Next**.

8. In the **Assign Memory** dialog box, ensure at least 8192 MB is assigned. Dynamic memory can be enabled, but for best performance, it is recommended to leave the option disabled.

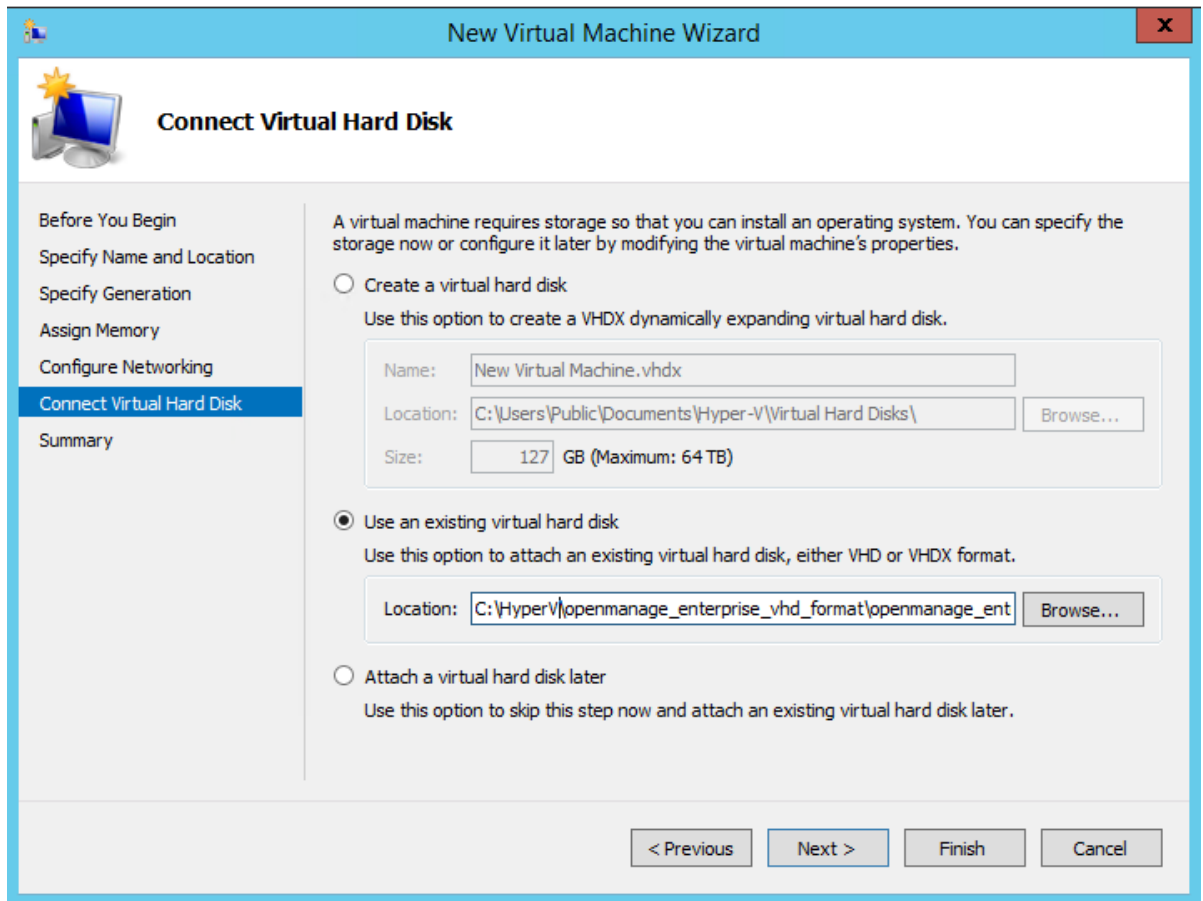


9. Click **Finish**.

10. On the networking configuration page, it is vital to ensure that the network adapter is connected to a network. OpenManage Enterprise-Tech Release will not function properly if it is set to “Not Connected” at the first boot, and will require redeployment if this scenario occurs.

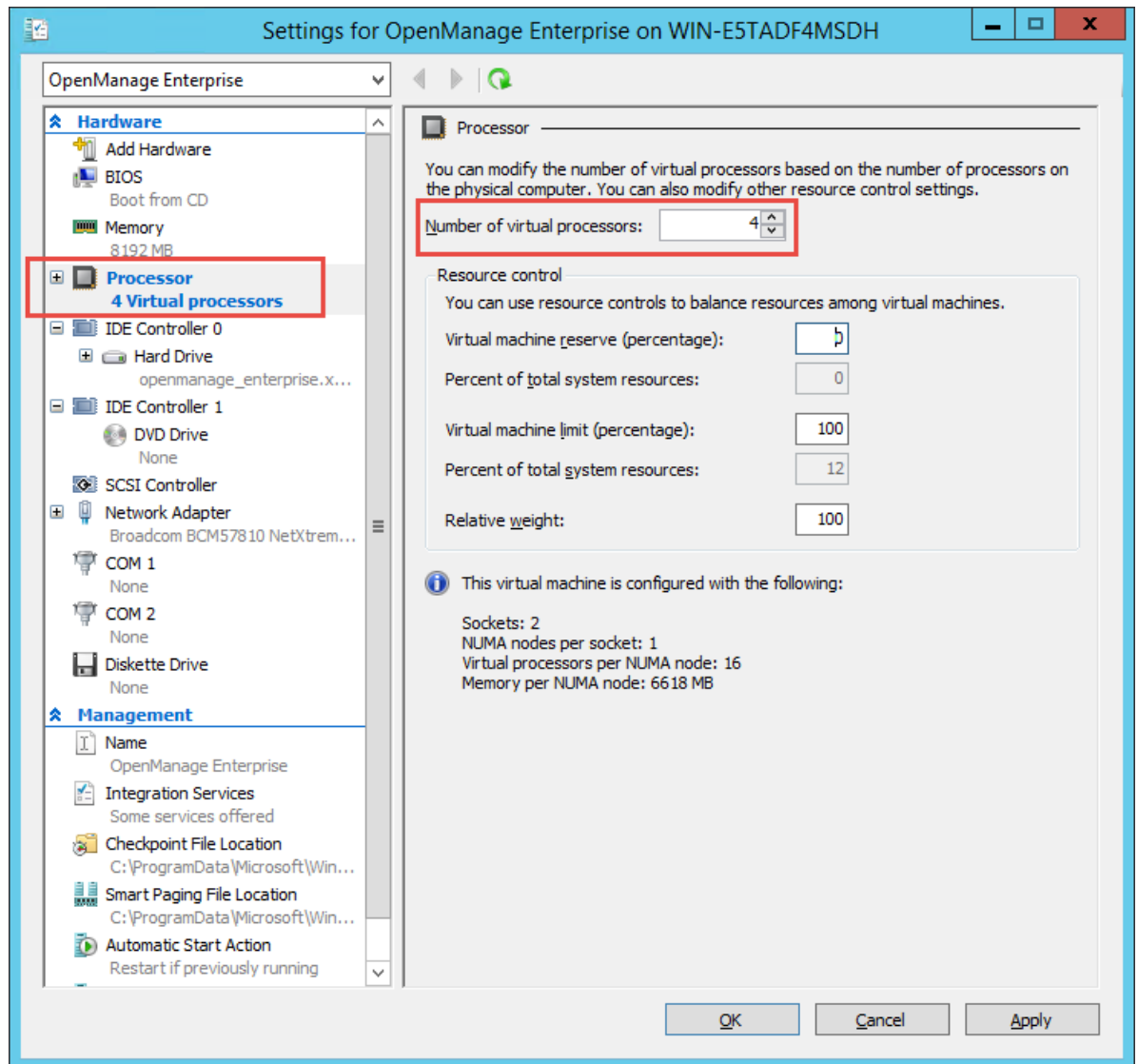


11. In the **Connect Virtual Hard Disk** dialog box, select **Use an existing virtual hard disk**, and then go to the VHD file you copied at the beginning of this procedure.



12. Follow the on-screen instructions to complete the deployment process.
13. After completion, open the settings of the newly created VM.

14. Ensure that a minimum of four virtual processors are specified.



15. Start the VM.
16. Go to [Common tasks after turning on the VM](#).

## 3 Deploying OpenManage Enterprise-Tech Release on VMWare vSphere

### 3.1 Prerequisites

- vSphere 5.5 or later
- Recommended a minimum of 40 gigabytes available disk space—recommended 200 gigabytes.
- Recommended deploying by using VMWare vSphere Standalone client (Chrome no longer works with vSphere Web Client properly because NPAPI is any longer supported).

While you can deploy the VMDK manually - we recommend deploying by using the supplied OVF, which will supply minimum requirements for running the OME-Tech Release appliance.

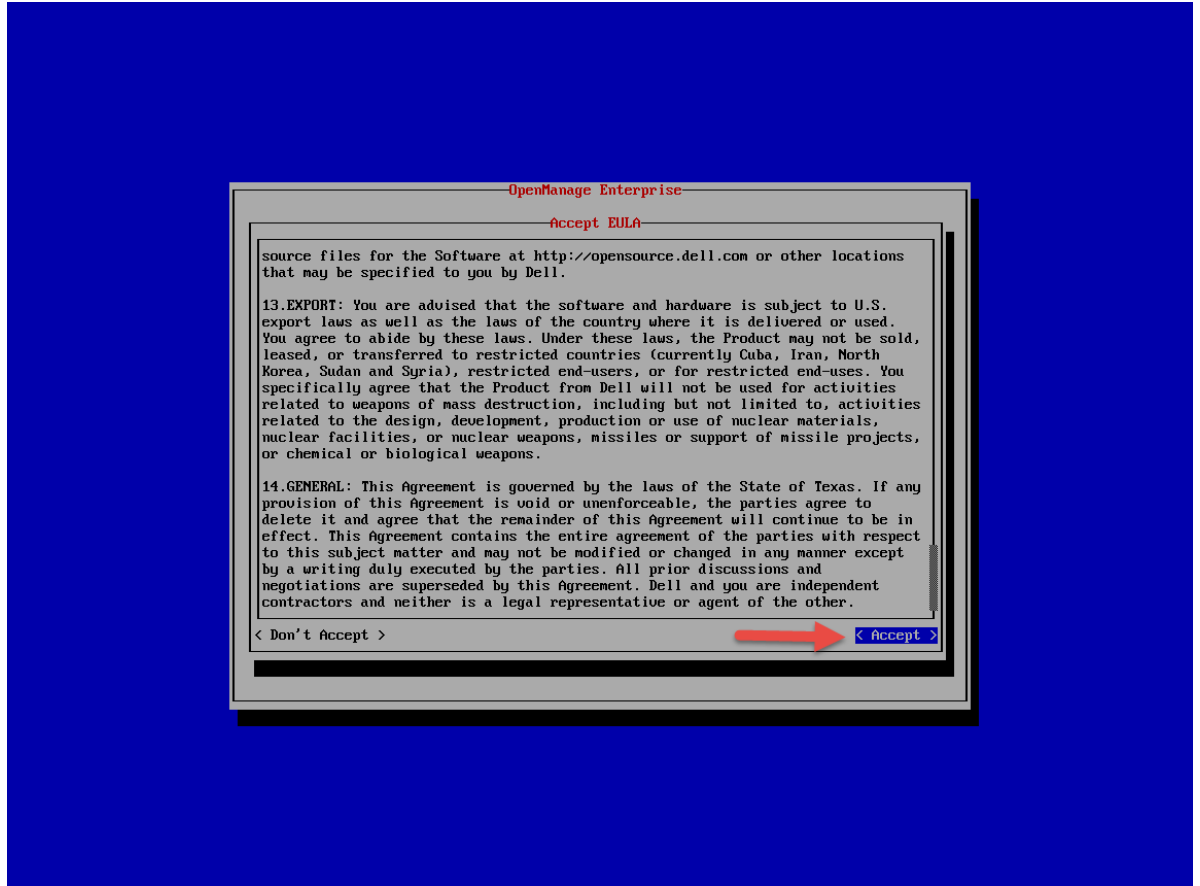
1. Click **File** → **Deploy OVF**.
2. Select the OVF source file—can be deployed from a local file or a URL.
3. Configure VM storage & network options as per the required configuration.
4. Turn on the VM.
5. Go to [Common tasks after turning on the VM](#).

### 3.2 KVM

- Because of the wide variety of configurations deploying OpenManage Enterprise under KVM, explicit instructions will not be provided.
- Ensure that at least 8 gigabytes of RAM are allocated, 4 virtual processors, and a single connected NIC is available.
- After turning on the VM, go to [Common tasks after turning on the VM](#).

## 4 Common tasks after turning on the VM

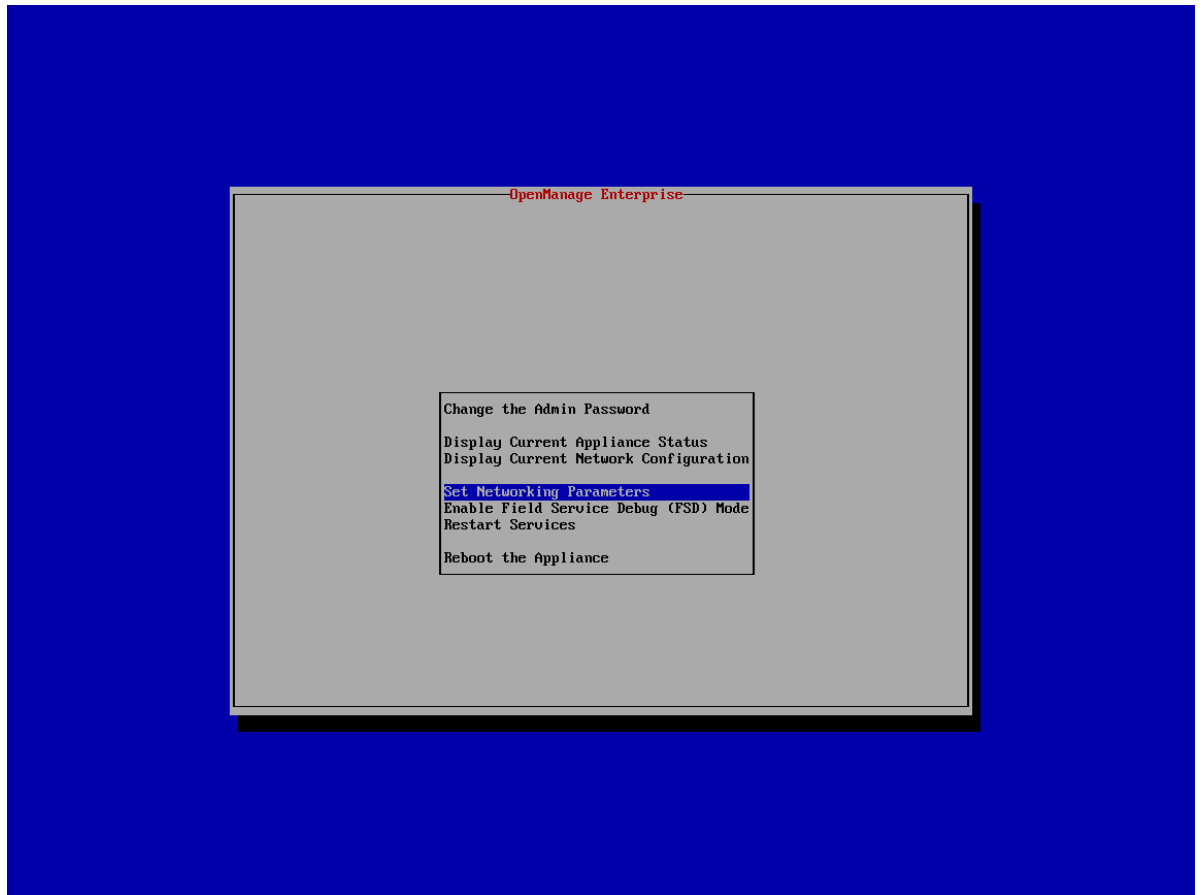
1. Wait for the OpenManage Enterprise-Tech Release EULA to be displayed.
2. Read and accept the EULA by using up and down arrows to scroll the text, and the tab key to navigate through the menu items.

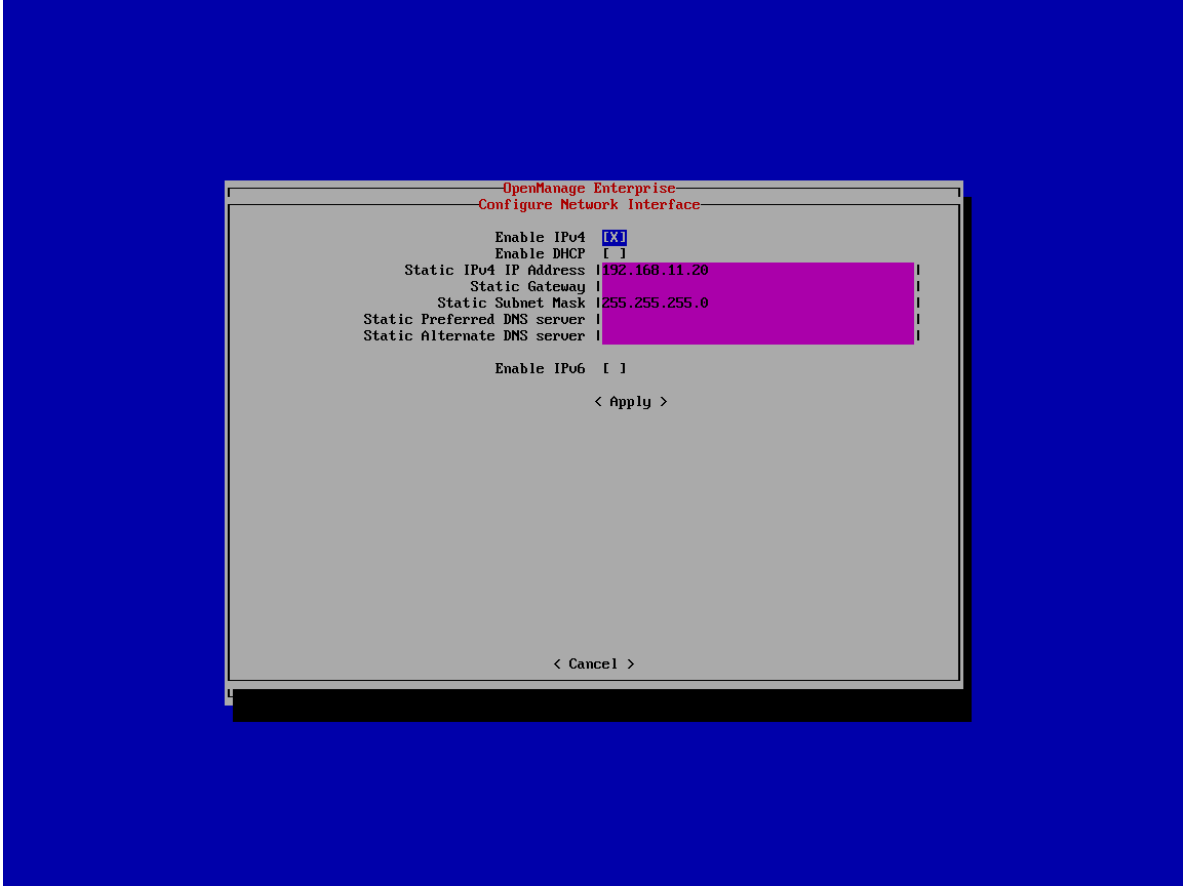


3. Enter and verify the OME appliance local admin password.

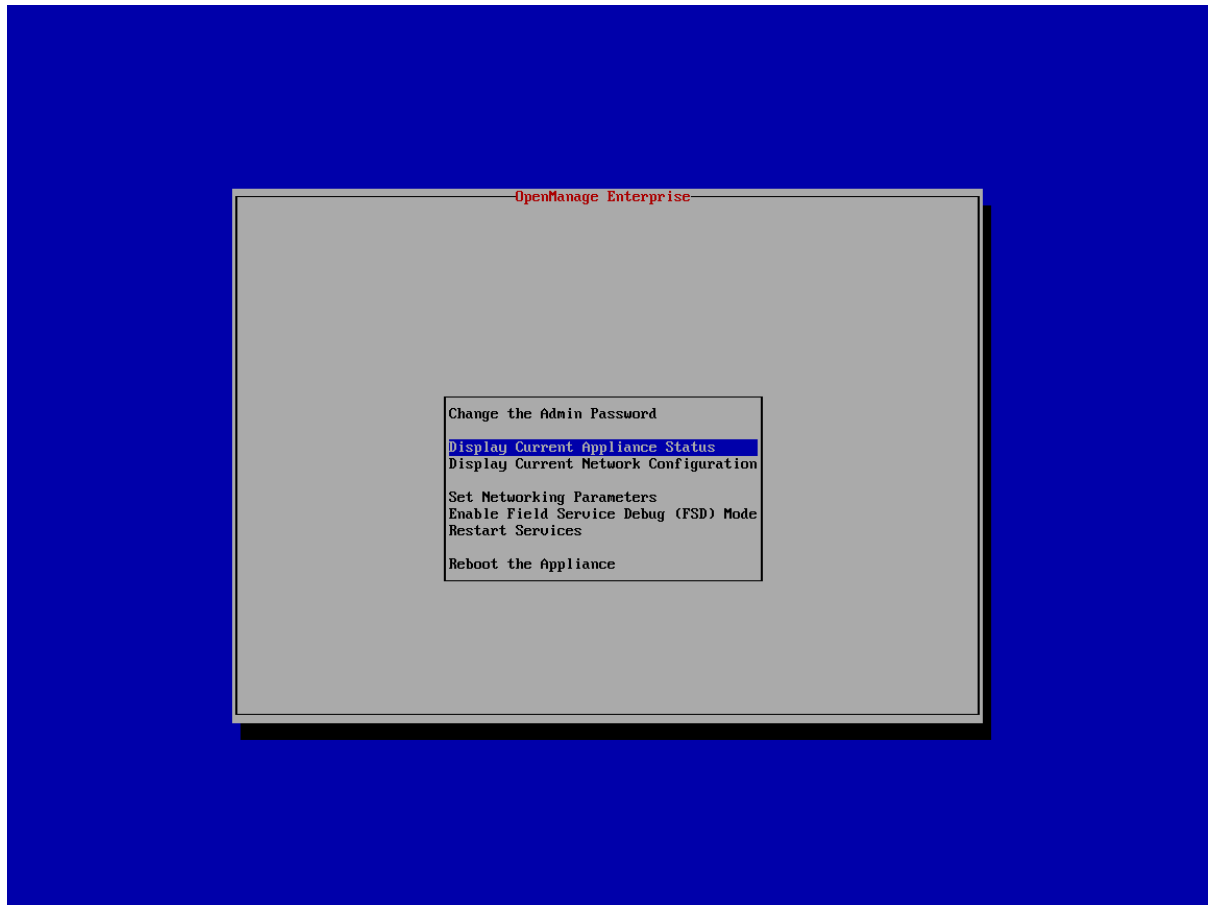


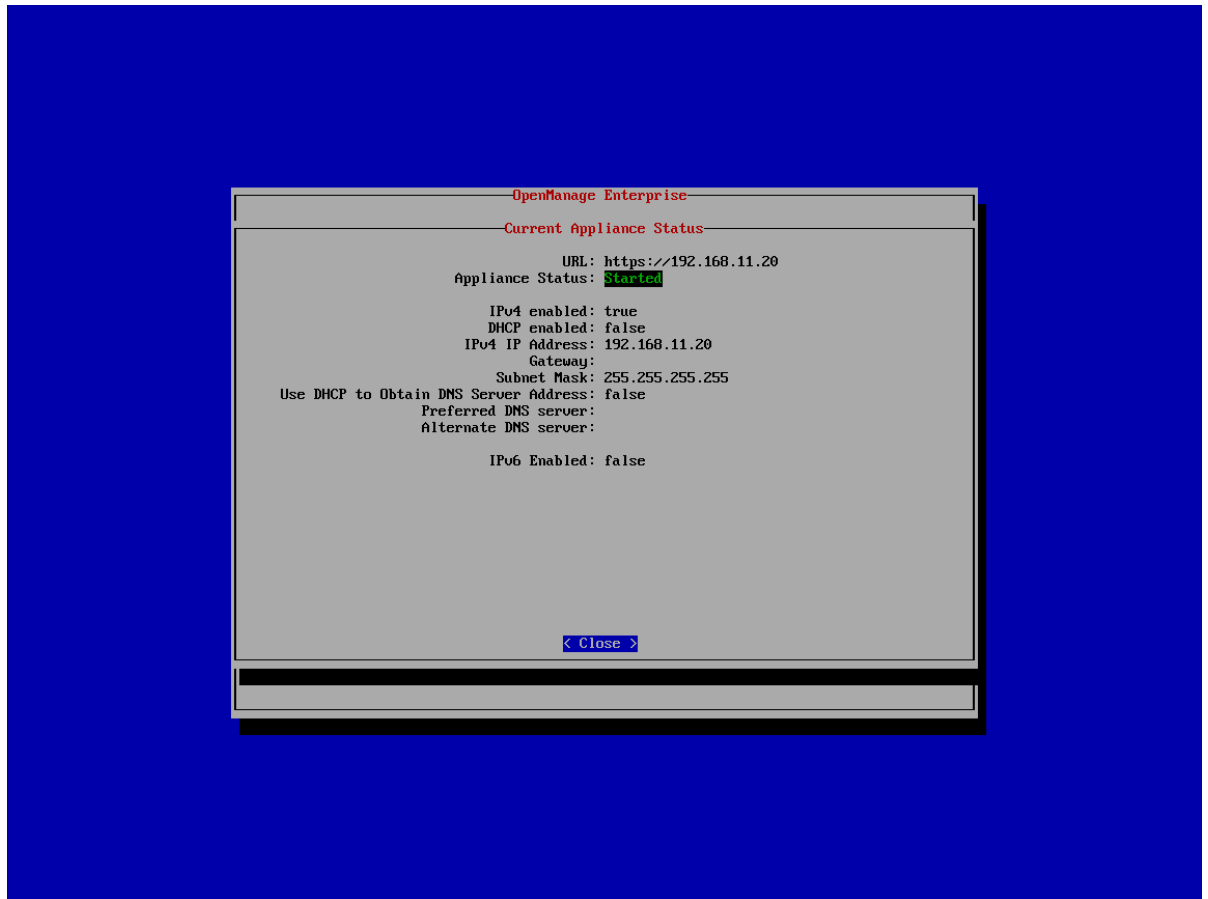
4. Configure network settings as appropriate to your environment.





5. View current settings to obtain actual IP addresses (if DHCP is configured).





6. Load OpenManage Enterprise in a supported browser.

## Conclusion

Deploying OpenManage Enterprise in a virtual environment is a straight forward process, supported on a number of popular hypervisors. The deployment model offers a quick way to begin managing assets in your data center from a single console.

For topics related to initial server discovery and management, see the *OpenManage Enterprise: Server Management Direct from Development* document on the Dell TechCenter.

## A Technical support and resources

- [Dell.com/support](https://dell.com/support) is focused on meeting customer needs with proven services and support.
- [Dell TechCenter](https://delltechcenter.com) is an online technical community where IT professionals have access to numerous resources for Dell EMC software, hardware and services.