




Dell EMC SD-WAN Edge 600 Series

Setup Guide

August 2019

Notes, cautions, and warnings

-  **NOTE:** A NOTE indicates important information that helps you make better use of your product.
-  **CAUTION:** A CAUTION indicates either potential damage to hardware or loss of data and tells you how to avoid the problem.
-  **WARNING:** A WARNING indicates a potential for property damage, personal injury, or death.

© 2019 Dell Inc. or its subsidiaries. All rights reserved. Dell, EMC, and other trademarks are trademarks of Dell Inc. or its subsidiaries. Other trademarks may be trademarks of their respective owners.

Contents

- 1 Edge 600 Series.....4**
- Installation instructions 4
- Specifications..... 7

Edge 600 Series

The Dell EMC SD-WAN Edge 600 Series (610, 620, 640, and 680) is a purpose-built, high-value uCPE platform to host virtual networking functions (VNFs).

For detailed installation information, including instructions for the wall mount and optional dual rackmount tray installation, see the *Dell EMC SD-WAN Edge 600 Series Installation Guide* at www.dell.com/support.

After unpacking the Edge 600 Series, inspect the device and immediately report any damage to your Dell EMC sales representative.

Topics:

- [Installation instructions](#)
- [Specifications](#)

Installation instructions

Information icon definitions:

- The Warning icon signals information about hardware handling that could result in injury.
- The Caution icon signals information about situations that could result in equipment damage or lost of data.
- The Note icon signals important operational information.

Install the device

 **WARNING:** To avoid electrostatic discharge (ESD) damage, wear grounding wrist straps when handling this equipment.

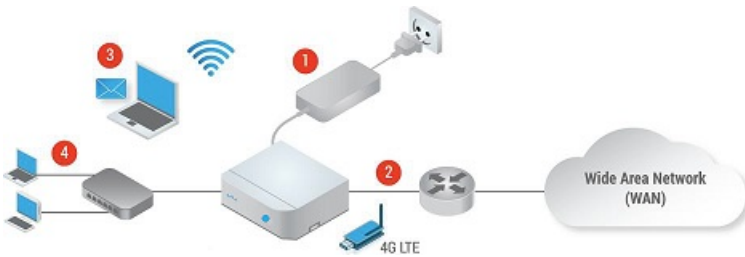
 **WARNING:** This device has optical transceivers, which comply with the limits of Class 1 laser radiation. When working with optical fibers, follow all warning labels and always wear eye protection.

⚠ WARNING: When no cable is connected, visible and invisible laser radiation may be emitted from the aperture of the optical transceiver ports. Avoid exposure to laser radiation and do not stare into open apertures.

Install the device in an area that meets the following safety requirements:

- Near a properly grounded AC power outlet.
- In a temperature-controlled room with a continuous temperature range from 0°C to 40°C (32°F to 104°F)
- In a dry, clean, and well-ventilated room away from heat sources such as hot air vents or direct sunlight
- Away from severe electromagnetic noise
- Away from direct view within the workplace

The numbers one through four in the following figure correspond to the setup procedure:

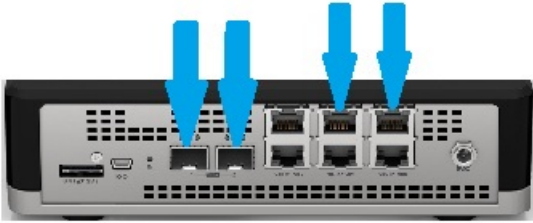


- 1 Connect the power adapter to the AC power outlet. Connect the other end of the power adapter to the power port on the Edge. When the Edge powers ON, verify that the status LED on the front of the Edge is on.

ⓘ NOTE: Connect the device to a properly wired earth-ground AC power outlet.



- 2 Connect one of the default WAN ports (GE3-6 or SFP1-2) to an available Internet connection. SFP modules are not included.



a 1—SFP 1-2

b 2—GE 3-6

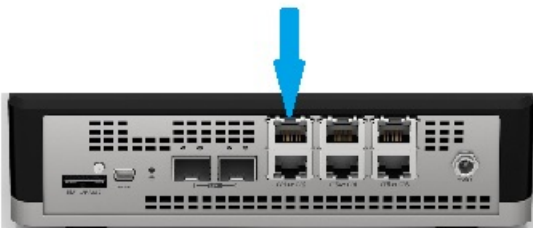
NOTE: By default, the Edge gets a DHCP IP address from the ISP on the WAN uplink. When the WAN connection is fully operational, the cloud LED on the front of the Edge is green.

- If you received an email from your IT administrator, follow the instructions in the email to complete the Edge activation.

If you did not receive an email, request the setup instructions from your IT administrator or find more information at the Dell EMC support site at www.dell.com/support.



- Connect local devices such as computers and switches to the GE1 or GE2 ports, or through the Edge WiFi.



- GE1 or GE2 ports

After following these instructions, if you are still unable to activate the Edge, contact your IT administrator or open a Dell EMC support request.

Specifications

Table 1. Edge 600 Series specifications


Feature	Specification
Size	8.1 in x 7.9 in x 2.0 in (W x D x H) 20.8 cm x 20.0 cm x 5.20 cm (W x D x H)
Weight, depending on the product	2.87 lb to 3.11 lb
 NOTE: Platform weight does not include power adapter weight.	1.30 Kg to 1.41 Kg
AC power input	100 VAC–240 VAC, 50/60 Hz
AC maximum current draw per system	100 VAC: 2.0 A 240 VAC: 1.0 A
Typical power consumption	16 core: 40 W 8 core: 35 W 4 core: 20 W 2 core: 16 W
Maximum power consumption	16 core: 50 W 8 core: 45 W 4 core: 30 W 2 core: 26 W
RoHS information	Go to: Restricted Material Compliance .

Table 2. Edge 600 Series temperatures

Feature	Specification
Operating temperature	0°C to 40°C (32°F to 104°F)
Storage temperature	-40°C to 70°C (-40°F to 158°F)
Operating relative humidity	5% to 85% (RH), non-condensing continuously 5% to 90% (RH), non-condensing short term (< 1% of operational hour per year)
Storage relative humidity	5% to 90% (RH)
Operating altitude	Maximum: 10,000 feet (3,048 meters) No performance degradation up to 3,117 feet (950 meters)