

# PS Series Storage Arrays Software Configuration

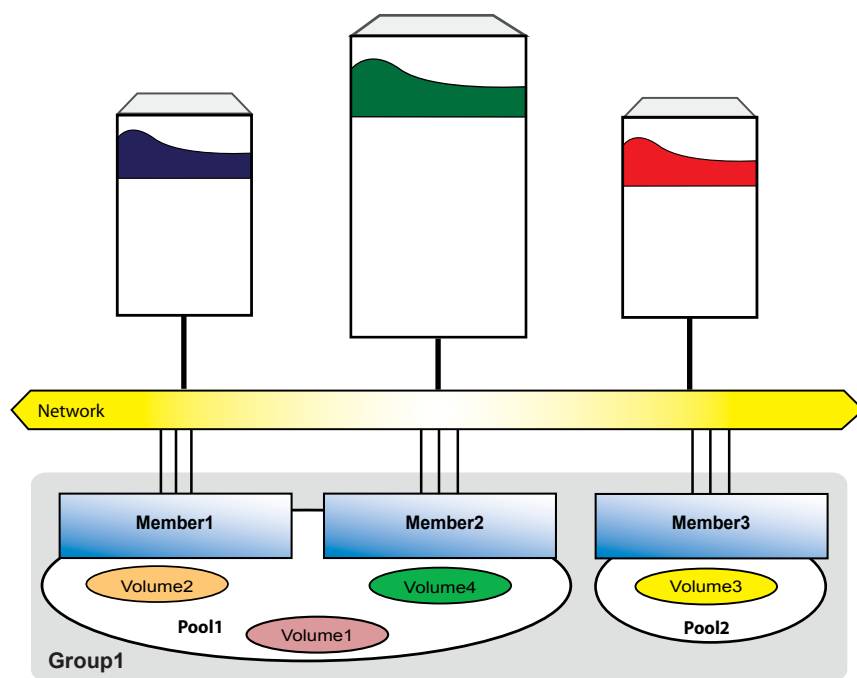
## PS Series Groups

A PS Series group is an easy-to-use, highly-scalable storage area network (SAN).

After you install the array hardware, you must initialize the array. Then, create a group with the array as the first member or add the array to an existing group. When you expand a group, capacity and performance increase, with no disruption to users.

For the latest documentation, including the PS Series *Release Notes*, see the support website: [www.support.dell.com/equallogic](http://www.support.dell.com/equallogic).

Multi-Member PS Series Group



## Software Configuration Methods

The Remote Setup Wizard facilitates server access to group storage space and is the recommended method of configuring the PS Series software.

Requirements include:

- A computer running Microsoft® Windows XP®, Windows Vista®, Windows Server® 2003 SP1, Windows Server® 2003 R2, or Windows Server® 2008.
- The computer must have one of these configurations:
  - Connected to the same Ethernet segment as the array. Do not block Layer 2 multicasting between the devices.
  - Connected to Ethernet 0 on the array using an RJ45 cable.

If you do not meet the Remote Setup Wizard requirements, use the `setup` utility to configure the PS Series software. See the PS Series *Installation and Setup* manual for information.

For support, visit [www.support.dell.com/equallogic](http://www.support.dell.com/equallogic) or call 1-800-945-3355.

### Step 1: Install the Host Integration Tools

The Host Integration Tools CD-ROM is shipped with the array.

1. Insert the CD-ROM in a Windows computer.
2. In the dialog boxes, follow the installation instructions.
3. Accept the installation defaults.

The Host Integration Tools documentation provides detailed information about using the tools.

### Step 2: Collect Configuration Information

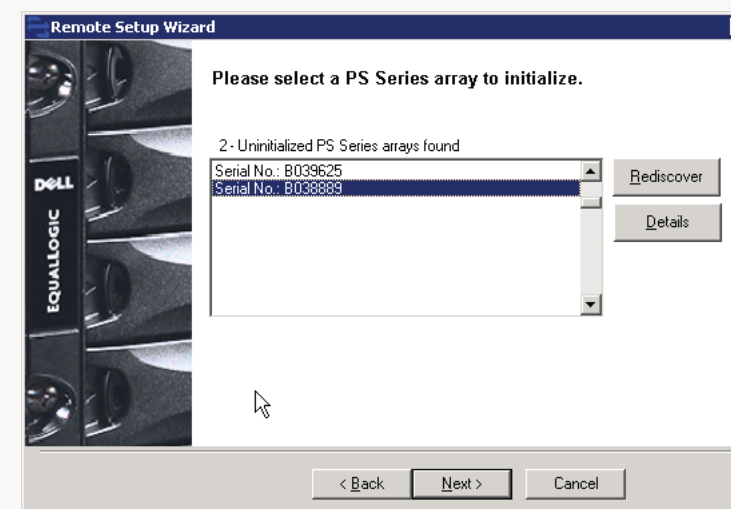
To configure the PS Series software, you need the information in the following tables.

Array Configuration	
<b>Member name</b>	One to 63 letters, numbers, or hyphens. The first character must be a letter or number.
<b>Array IP address</b>	Must be in the same subnet as the group IP address.
<b>Subnet mask</b>	Address that combines with the IP address to identify the subnet on which the array network interface resides (default is 255.255.255.0).
<b>Default gateway</b>	Must be in the same subnet as the group IP address.
<b>RAID policy</b>	RAID level and spare disk drive configuration for the array. The actual number of RAID sets and spare drives depends on the number of drives in the array: <ul style="list-style-type: none"> <li>• RAID 10 - Striping on top of multiple RAID 1 (mirrored) sets.</li> <li>• RAID 50 - Striping on top of multiple RAID 5 (distributed-parity) sets. Each RAID 5 set has one parity drive.</li> <li>• RAID 5 - Distributed-parity sets.</li> <li>• RAID 6 - Multiple dual distributed-parity sets.</li> </ul>

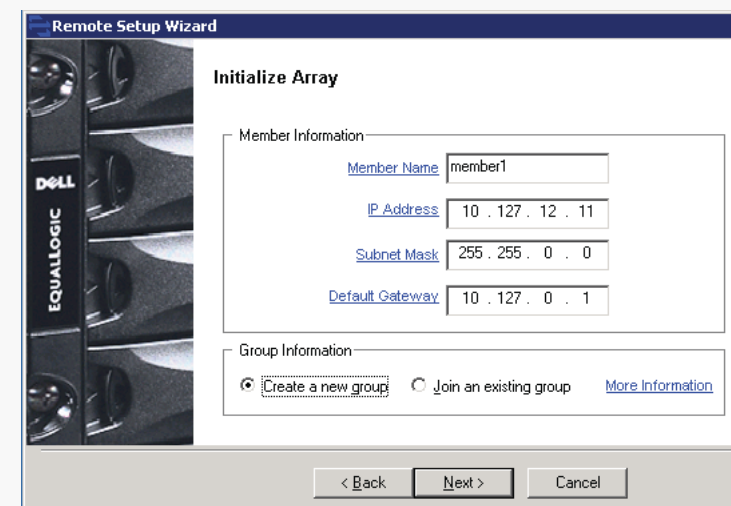
Group Configuration	
<b>Group name</b>	One to 63 letters, numbers, or hyphens. The first character must be a letter.
<b>Group IP address</b>	An IP address used by iSCSI storage and management and by group administrators to access a group.
<b>Administration password</b>	Three to 16 letters or numbers, case-sensitive. Overrides the default <code>grpadmin</code> account password.
<b>Membership password</b>	Three to 16 letters or numbers, case-sensitive. Used when expanding an existing group.
<b>CHAP user name</b>	Three to 63 letters or numbers. Used by Microsoft services for group access.
<b>CHAP password</b>	Twelve to 16 letters or numbers. Used by Microsoft services for group access.

### Step 3: Run the Remote Setup Wizard

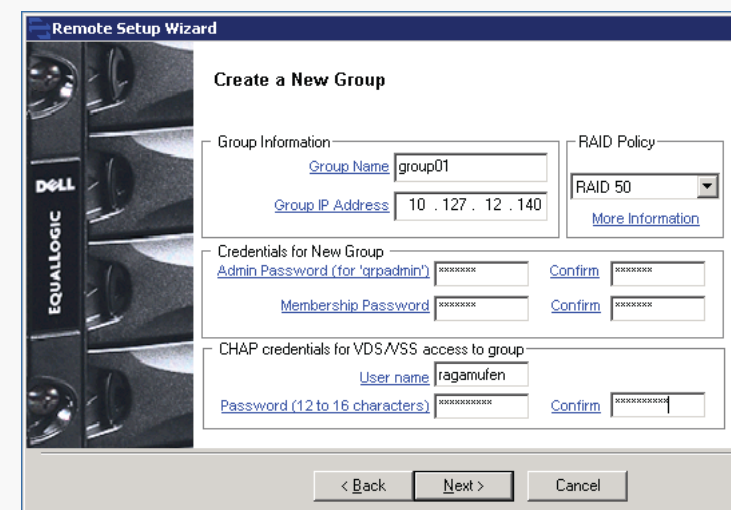
1. Click Start > Programs > EqualLogic > Remote Setup Wizard
2. Choose to initialize an array and click Next.
3. Select the array that you want to initialize and click Next.



4. Enter the array information, and then click either Create a New Group or Join an existing group.



5. If creating a new group, specify the group configuration and click Next.



6. Click Finish to exit the Remote Setup Wizard.

The array initialization and group configuration are now complete.

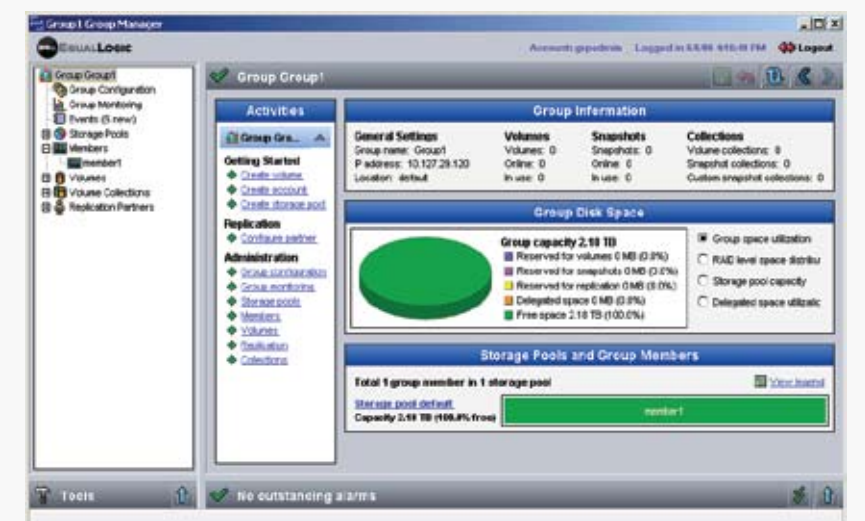
### Step 4: Start Using the SAN

To allocate SAN storage space to users, create a volume. To connect to a volume, a computer must have an iSCSI initiator and must match the volume's access controls.

Note: If you added the array to an existing group, the array's storage space will not be available until you use the Group Manager GUI to set the RAID policy.

To create and connect to a volume:

1. Start the Group Manager GUI by entering the group IP address in a web browser. See the PS Series *Release Notes* for the latest browser requirements.



2. Click Create Volume in the Activities panel.
3. In the dialog boxes, enter the volume name, size, and access controls (iSCSI initiator name or IP address).
4. Use the computer's iSCSI initiator to discover the iSCSI targets (volumes) in the group.
 

If the computer is not the one from which you configured the software, enter the group IP address as the target discovery address in order to discover the group volumes.
5. Select the target associated with the volume and log in.

Note: If you cannot log in to a volume, make sure the computer matches the volume's access controls.

## Where to Go Next

See the PS Series Online Help to customize the group and use all its features. If your computer has an Internet connection, you can access the online help from the Group Manager GUI. Start the GUI, expand Tools in the lower-left corner and select Online Help.

Visit [www.support.dell.com/equallogic](http://www.support.dell.com/equallogic) for the latest information about PS Series arrays.