

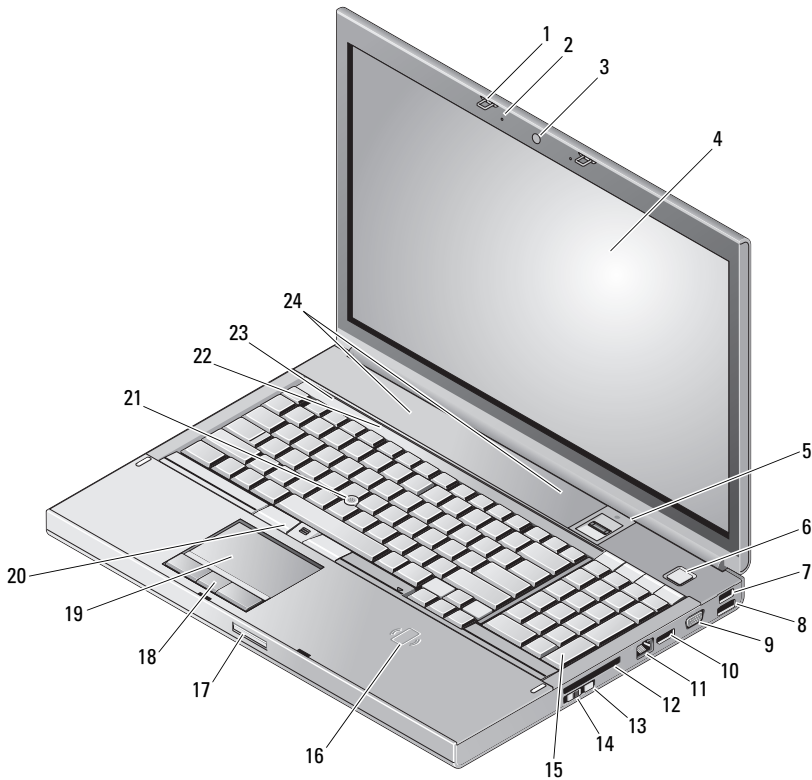


## About Warnings

 **WARNING:** A WARNING indicates a potential for property damage, personal injury, or death.

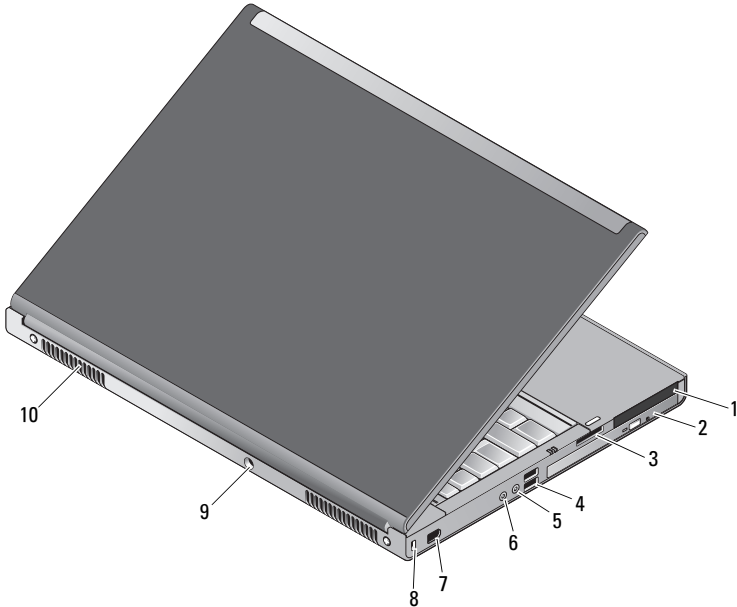
# Dell Precision™ Workstation M6400 Setup and Features Information Tech Sheet

## Front View



- |    |                               |    |                            |
|----|-------------------------------|----|----------------------------|
| 1  | display latches (2)           | 2  | microphones (2)            |
| 3  | camera (optional)             | 4  | display                    |
| 5  | fingerprint swipe/FIPS reader | 6  | power button               |
| 7  | USB 2.0 connector             | 8  | USB2.0/eSATA connector     |
| 9  | VGA connector                 | 10 | DisplayPort                |
| 11 | network connector             | 12 | ExpressCard slot           |
| 13 | Wi-Fi Catcher™                | 14 | wireless switch            |
| 15 | keyboard                      | 16 | wireless smart card reader |
| 17 | display release latch         | 18 | touch pad buttons (3)      |
| 19 | touch pad                     | 20 | track stick buttons (3)    |
| 21 | track stick                   | 22 | keyboard status lights     |
| 23 | device status lights          | 24 | speakers (2)               |

## Back View



1	PC Card and Smart Card slot	2	optical drive bay
3	8-in-1 card reader slot	4	USB 2.0 connectors (2)
5	headphone connector	6	microphone connector
7	6-pin IEEE 1394 connector (powered)	8	security cable slot
9	AC adapter connector	10	air vents (2)



**WARNING:** Do not block, push objects into, or allow dust to accumulate in the air vents. Do not store your Dell™ computer in a low-airflow environment, such as a closed briefcase, while it is running. Restricting the airflow can damage the computer or cause a fire. The computer turns on the fan when the computer gets hot. Fan noise is normal and does not indicate a problem with the fan or the computer.

## Quick Setup



**WARNING:** Before you begin any of the procedures in this section, read the safety information that shipped with your computer. For additional best practices information, see [www.dell.com/regulatory\\_compliance](http://www.dell.com/regulatory_compliance).



**WARNING:** The AC adapter works with electrical outlets worldwide. However, power connectors and power strips vary among countries. Using an incompatible cable or improperly connecting the cable to the power strip or electrical outlet may cause fire or equipment damage.

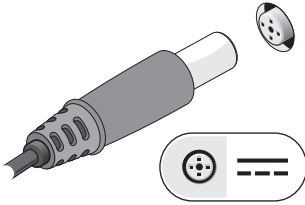


**CAUTION:** When you disconnect the AC adapter cable from the computer, grasp the connector, not the cable itself, and pull firmly but gently to avoid damaging the cable. When you wrap the AC adapter cable, ensure that you follow the angle of the connector on the AC adapter to avoid damaging the cable.

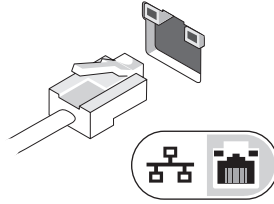


**NOTE:** Some devices may not be included if you did not order them.

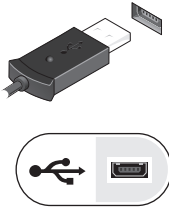
1 Connect the AC adapter to the AC adapter connector on the computer and to the electrical outlet.



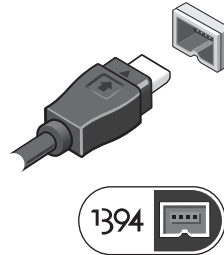
2 Connect the network cable (optional).



3 Connect USB devices, such as a mouse or keyboard (optional).




4 Connect IEEE 1394 devices, such as a DVD player (optional).



5 Open the computer display and press the power button to turn on the computer.



 **NOTE:** It is recommended that you turn on and shut down your computer at least once before you install any cards or connect the computer to a docking device or other external device, such as a printer.

## Specifications



**NOTE:** Offerings may vary by region. The following specifications are only those required by law to ship with your computer. For more information regarding the configuration of your computer, click **Start**→**Help and Support** and select the option to view information about your computer.

---

### System Information

---

Chipset	Intel® Q43 GMCH, ICH9M-E
---------	--------------------------

---

### Processor

---

Processor	Intel Core™ 2 Duo Intel Core 2 Duo Extreme Edition Intel Core 2 Duo Quad Core Intel Core 2 Duo Extreme Edition Quad Core
-----------	---

---

### Video

---

Video type	Discrete graphics card
Data bus	PCI Express graphics
Video controller	NVIDIA Quadro® FX 2700M/3700M ATI FirePro™ V7740
Video memory	NVIDIA Quadro FX 2700M — 512 MB NVIDIA Quadro FX 3700M — 1 GB ATI FirePro V7740 — 1 GB

---

### Memory

---

Memory module connector	four user-accessible SODIMM slots
Memory module capacity	1 GB, 2 GB, or 4GB
Memory type	DDR3 1066 MHz
Minimum memory	1 GB
Maximum memory	16 GB

---

**Battery**

---

Type	9-cell "smart lithium ion"
Temperature range	
Operating	0 to 35°C (32 to 95°F)
Storage	-40 to 60°C (-40 to 140° F)
Coin-cell battery	CR2032

---

**AC Adapter**

---

Type	210 W/ 240 W
Input voltage	100–240 VAC
Input current (maximum)	2.50 A/ 3.50 A
Input frequency	50–60 Hz
Output current	6.70 A/ 10.80 A
Rated output voltage	19.50 VDC
Temperature range	
Operating	0 to 35°C (32 to 95°F)
Storage	-40 to 60°C (-40 to 149°F)

---

**Physical**

---

Height	38.50 mm (1.52 inches)
Width	393.00 mm (15.50 inches)
Depth	280.00 mm (11.04 inches)
Weight	3.87 kgs (8.54 lbs) with a 9-cell battery and CD drive

---

**Environmental**

---

Temperature range	
Operating	0 to 35°C (32 to 95°F)
Storage	-40 to 65°C (-40 to 149°F)
Relative humidity (maximum)	
Operating	10% to 90% (noncondensing)
Storage	5% to 95% (noncondensing)

## Finding More Information and Resources

---

<b>If you need to:</b>	<b>See:</b>
Find safety best practices information for your computer, review Warranty information, Terms and Conditions(U.S only), Safety instructions, Regulatory information, Ergonomics information, and End User License Agreement.	The safety and regulatory documents that shipped with your computer and the Regulatory Compliance Homepage at <a href="http://www.dell.com/regulatory_compliance">www.dell.com/regulatory_compliance</a> .

---

**Information in this document is subject to change without notice.**

**© 2009 Dell Inc. All rights reserved.**

Reproduction of these materials in any manner whatsoever without the written permission of Dell Inc. is strictly forbidden.

Trademarks used in this text: *Dell*, the *DELL* logo, and *Dell Precision* are trademarks of Dell Inc.; *ATI FirePro* is a trademark of Advanced Micro Devices Inc.; *Intel* is a registered trademark and *Core* is a trademark of Intel Corporation in the U.S. and other countries.; *NVIDIA Quadro* is a registered trademark of NVIDIA Corporation in the U.S and other countries.

Other trademarks and trade names may be used in this document to refer to either the entities claiming the marks and names or their products. Dell Inc. disclaims any proprietary interest in trademarks and trade names other than its own.

