

Inspiron 17/17R

Owner's Manual

Computer model: Inspiron 3721/5721

Regulatory model: P17E

Regulatory type: P17E001



Notes, Cautions, and Warnings



NOTE: A NOTE indicates important information that helps you make better use of your computer.



CAUTION: A CAUTION indicates potential damage to hardware or loss of data if instructions are not followed.



WARNING: A WARNING indicates a potential for property damage, personal injury, or death.

© 2012 Dell Inc.

Trademarks used in this text: Dell™, the DELL logo, and Inspiron™ are trademarks of Dell Inc.; Microsoft®, Windows®, and the Windows start button logo are either trademarks or registered trademarks of Microsoft Corporation in the United States and/or other countries; Bluetooth® is a registered trademark owned by Bluetooth SIG, Inc. and is used by Dell under license.

Contents

Before You Begin	9
Turn Off Your Computer and Connected Devices.	9
Safety Instructions.	10
Recommended Tools.	10
After Working Inside Your Computer	11
Removing the Battery	12
Procedure	12
Replacing the Battery	13
Procedure	13
Removing the Optical Drive	14
Prerequisites.	14
Procedure	14
Replacing the Optical Drive	16
Procedure	16
Postrequisites.	16
Removing the Keyboard	17
Prerequisites.	17
Procedure	17
Replacing the Keyboard	19
Procedure	19
Postrequisites.	19
Removing the Base Cover	20
Prerequisites.	20
Procedure	20

Replacing the Base Cover	21
Procedure	21
Postrequisites.	21
Removing the Memory Module(s)	22
Prerequisites.	22
Procedure	22
Replacing the Memory Module(s)	23
Procedure	23
Postrequisites.	23
Removing the Hard Drive	24
Prerequisites.	24
Procedure	25
Replacing the Hard Drive	27
Procedure	27
Postrequisites.	27
Removing the Coin-Cell Battery	28
Prerequisites.	28
Procedure	28
Replacing the Coin-Cell Battery	29
Procedure	29
Postrequisites.	29
Removing the Palm-Rest	30
Prerequisites.	30
Procedure	30
Replacing the Palm-Rest	33
Procedure	33
Postrequisites.	33

Removing the Wireless Mini-Card	34
Prerequisites.	34
Procedure	34
Replacing the Wireless Mini-Card	36
Procedure	36
Postrequisites.	36
Removing the I/O Board	37
Prerequisites.	37
Procedure	37
Replacing the I/O Board	38
Procedure	38
Postrequisites.	38
Removing the System Board	39
Prerequisites.	39
Procedure	40
Replacing the System Board	43
Procedure	43
Postrequisites.	44
Removing the Fan	45
Prerequisites.	45
Procedure	46
Replacing the Fan	47
Procedure	47
Postrequisites.	47
Removing the Cooling Assembly	48
Prerequisites.	48
Procedure	49

Replacing the Cooling Assembly	50
Procedure	50
Postrequisites.	50
Removing the Hard-Drive Interposer Board	51
Prerequisites.	51
Procedure	52
Replacing the Hard-Drive Interposer Board	53
Procedure	53
Postrequisites.	53
Removing the Speakers	54
Prerequisites.	54
Procedure	55
Replacing the Speakers	56
Procedure	56
Postrequisites.	56
Removing the Display Assembly	57
Prerequisites.	57
Procedure	58
Replacing the Display Assembly	59
Procedure	59
Postrequisites.	59
Removing the Display Bezel	60
Prerequisites.	60
Procedure	61
Replacing the Display Bezel	62
Procedure	62
Postrequisites.	62

Removing the Display Hinges	63
Prerequisites.	63
Procedure	64
Replacing the Display Hinges	65
Procedure	65
Postrequisites.	65
Removing the Display Panel	66
Prerequisites.	66
Procedure	67
Replacing the Display Panel	69
Procedure	69
Postrequisites.	69
Removing the Camera Module	70
Prerequisites.	70
Procedure	71
Replacing the Camera Module	72
Procedure	72
Postrequisites.	72
Removing the Power-Adapter Port	73
Prerequisites.	73
Procedure	74
Replacing the Power-Adapter Port	75
Procedure	75
Postrequisites.	75
Flashing the BIOS	76

Before You Begin

Turn Off Your Computer and Connected Devices




CAUTION: To avoid losing data, save and close all open files and exit all open programs before you turn off your computer.

- 1 Save and close all open files and exit all open programs.
- 2 Shut down your computer.

Windows 8:

- a Point your mouse pointer to the upper-right or lower-right corner of the screen to open the Charms sidebar.
- b In the Charms sidebar, click **Settings**→**Power**→**Shut down**.

Windows 7:

Click **Start**  and click **Shut down**.

Microsoft Windows shuts down and then the computer turns off.












NOTE: If you are using a different operating system, see the documentation of your operating system for shut-down instructions.

- 3 Disconnect your computer and all attached devices from their electrical outlets.
- 4 Disconnect all telephone cables, network cables, and attached devices from your computer.
- 5 After you unplug all the cables from the computer, press and hold the power button for 5 seconds to ground the system board.

Safety Instructions

Use the following safety guidelines to protect your computer from potential damage and ensure your personal safety.

-  **WARNING:** Before working inside your computer, read the safety information that shipped with your computer. For additional safety best practices information, see the Regulatory Compliance Homepage at dell.com/regulatory_compliance.
-  **WARNING:** Disconnect all power sources before opening the computer cover or panels. After you finish working inside the computer, replace all covers, panels, and screws before connecting to the power source.
-  **CAUTION:** To avoid damaging the computer, ensure that the work surface is flat and clean.
-  **CAUTION:** To avoid damaging the components and cards, handle them by their edges and avoid touching pins and contacts.
-  **CAUTION:** Only a certified service technician is authorized to remove the computer cover and access any of the components inside the computer. See the safety instructions for complete information about safety precautions, working inside your computer, and protecting against electrostatic discharge.
-  **CAUTION:** Before touching anything inside your computer, ground yourself by touching an unpainted metal surface, such as the metal at the back of the computer. While you work, periodically touch an unpainted metal surface to dissipate static electricity, which could harm internal components.
-  **CAUTION:** When you disconnect a cable, pull on its connector or on its pull-tab, not on the cable itself. Some cables have connectors with locking tabs or thumb-screws that you must disengage before disconnecting the cable. When disconnecting cables, keep them evenly aligned to avoid bending any connector pins. When connecting cables, ensure that the connectors and ports are correctly oriented and aligned.
-  **CAUTION:** To disconnect a network cable, first unplug the cable from your computer and then unplug the cable from the network device.
-  **CAUTION:** Press and eject any installed card from the media-card reader.

Recommended Tools

The procedures in this document may require the following tools:

- Phillips screwdriver
- Plastic scribe

After Working Inside Your Computer

After you complete the replacement procedures, ensure the following:

- Replace all screws and ensure that no stray screws remain inside your computer.
- Connect any external devices, cables, cards, and any other part(s) you removed before working on your computer.
- Connect your computer and all attached devices to their electrical outlets.



CAUTION: Before turning on your computer, replace all screws and ensure that no stray screws remain inside the computer. Failure to do so may damage your computer.

Removing the Battery

⚠ WARNING: Before working inside your computer, read the safety information that shipped with your computer and follow the steps in "Before You Begin" on page 9. After working inside your computer, follow the instructions in "After Working Inside Your Computer" on page 11. For additional safety best practices information, see the Regulatory Compliance Homepage at dell.com/regulatory_compliance.

Procedure

- 1 Close the display and turn the computer over.
- 2 Slide the battery latches to the unlock position. You hear a click when the battery is unlocked.
- 3 Lift and remove the battery off the computer base.



1 battery latches (2)

2 battery

Replacing the Battery



WARNING: Before working inside your computer, read the safety information that shipped with your computer and follow the steps in "Before You Begin" on page 9. After working inside your computer, follow the instructions in "After Working Inside Your Computer" on page 11. For additional safety best practices information, see the Regulatory Compliance Homepage at dell.com/regulatory_compliance.

Procedure

Align the tabs on the battery with the slots on the battery bay and snap the battery into place.

Removing the Optical Drive

⚠ WARNING: Before working inside your computer, read the safety information that shipped with your computer and follow the steps in "Before You Begin" on page 9. After working inside your computer, follow the instructions in "After Working Inside Your Computer" on page 11. For additional safety best practices information, see the Regulatory Compliance Homepage at dell.com/regulatory_compliance.

Prerequisites

Remove the battery. See "Removing the Battery" on page 12.

Procedure

- 1 Remove the screw that secures the optical-drive assembly to the computer base.
- 2 Using your fingertips, slide the optical-drive assembly out of the optical-drive bay.



1 optical-drive assembly

2 screw

- 3 Remove the screw that secures the optical-drive bracket to the optical-drive assembly and remove the optical-drive bracket.
- 4 Carefully pull the optical-drive bezel and remove it from the optical drive.



1	optical-drive bezel	2	optical drive
3	optical-drive bracket	4	screw

Replacing the Optical Drive



WARNING: Before working inside your computer, read the safety information that shipped with your computer and follow the steps in "Before You Begin" on page 9. After working inside your computer, follow the instructions in "After Working Inside Your Computer" on page 11. For additional safety best practices information, see the Regulatory Compliance Homepage at dell.com/regulatory_compliance.

Procedure

- 1 Align the tabs on the optical-drive bezel with the slots on the optical drive and snap the optical-drive bezel into place.
- 2 Align the screw hole on the optical-drive bracket with the screw hole on the optical-drive assembly and replace the screw that secures the optical-drive bracket to the optical-drive assembly.
- 3 Slide the optical-drive assembly into the optical-drive bay and ensure that the screw hole on the optical-drive bracket aligns with the screw hole on computer base.
- 4 Replace the screw that secures the optical-drive assembly to the computer base.

Postrequisites

Replace the battery. See "Replacing the Battery" on page 13.

Removing the Keyboard

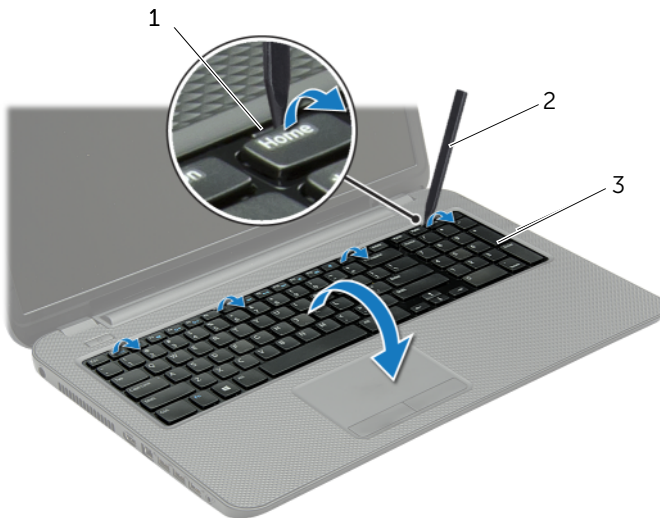
⚠ WARNING: Before working inside your computer, read the safety information that shipped with your computer and follow the steps in "Before You Begin" on page 9. After working inside your computer, follow the instructions in "After Working Inside Your Computer" on page 11. For additional safety best practices information, see the Regulatory Compliance Homepage at dell.com/regulatory_compliance.

Prerequisites

Remove the battery. See "Removing the Battery" on page 12.

Procedure

- 1 Open the display as far as possible.
- 2 Using a plastic scribe, pry the keyboard from the tabs on the palm-rest.

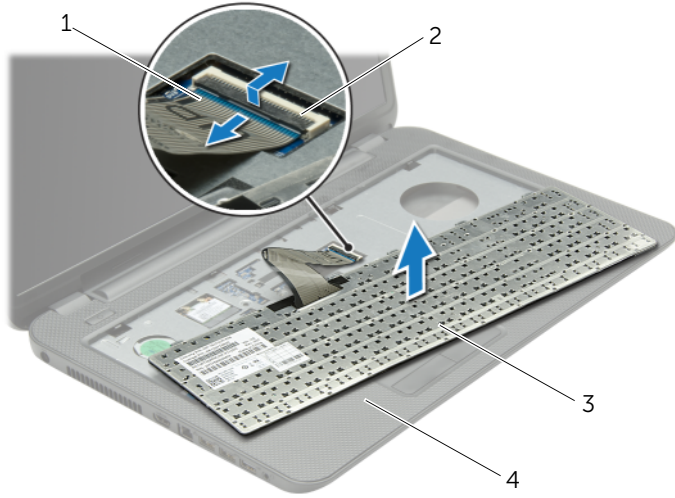


1 tabs (4)

2 plastic scribe

3 keyboard

- 3 Turn the keyboard over and place it on the palm-rest.
- 4 Lift the connector latch and disconnect the keyboard cable from the keyboard-cable connector.
- 5 Lift the keyboard off the palm-rest.



1	keyboard cable	2	connector latch
3	keyboard	4	palm-rest

Replacing the Keyboard



WARNING: Before working inside your computer, read the safety information that shipped with your computer and follow the steps in "Before You Begin" on page 9. After working inside your computer, follow the instructions in "After Working Inside Your Computer" on page 11. For additional safety best practices information, see the Regulatory Compliance Homepage at dell.com/regulatory_compliance.

Procedure

- 1 Slide the keyboard cable into the keyboard-cable connector and press down on the connector latch to secure the cable.
- 2 Slide the tabs at the bottom of the keyboard into the slots on the palm-rest and place the keyboard on the palm-rest.
- 3 Gently press around the edges of the keyboard to secure the keyboard under the tabs on the palm-rest.
- 4 Replace the screws that secure the keyboard to the computer base.

Postrequisites

Replace the battery. See "Replacing the Battery" on page 13.

Removing the Base Cover

⚠ WARNING: Before working inside your computer, read the safety information that shipped with your computer and follow the steps in "Before You Begin" on page 9. After working inside your computer, follow the instructions in "After Working Inside Your Computer" on page 11. For additional safety best practices information, see the Regulatory Compliance Homepage at dell.com/regulatory_compliance.

Prerequisites

Remove the battery. See "Removing the Battery" on page 12.

Procedure

- 1 Loosen the captive screws that secure the base cover to the computer base.
- 2 Using your fingertips, lift the base cover out of the slots on the computer base.



1 captive screws (2)

2 base cover

Replacing the Base Cover



WARNING: Before working inside your computer, read the safety information that shipped with your computer and follow the steps in "Before You Begin" on page 9. After working inside your computer, follow the instructions in "After Working Inside Your Computer" on page 11. For additional safety best practices information, see the Regulatory Compliance Homepage at dell.com/regulatory_compliance.

Procedure

- 1 Slide the tabs on the base cover into the slots on the computer base and snap the base cover into place.
- 2 Tighten the captive screws that secure the base cover to the computer base.

Postrequisites

Replace the battery. See "Replacing the Battery" on page 13.

Removing the Memory Module(s)

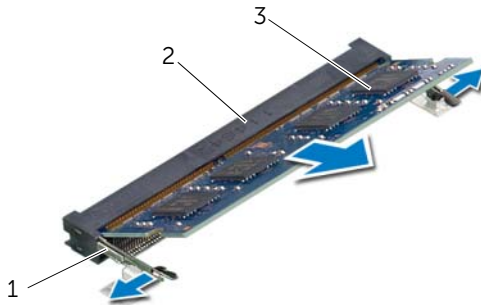
⚠ WARNING: Before working inside your computer, read the safety information that shipped with your computer and follow the steps in "Before You Begin" on page 9. After working inside your computer, follow the instructions in "After Working Inside Your Computer" on page 11. For additional safety best practices information, see the Regulatory Compliance Homepage at dell.com/regulatory_compliance.

Prerequisites

- 1 Remove the battery. See "Removing the Battery" on page 12.
- 2 Remove the base cover. See "Removing the Base Cover" on page 20.

Procedure

- 1 Use your fingertips to carefully spread apart the securing-clips on each end of the memory-module connector until the memory module pops up.
- 2 Remove the memory module from the memory-module connector.



1 securing-clips (2)

2 memory-module connector

3 memory module

Replacing the Memory Module(s)



WARNING: Before working inside your computer, read the safety information that shipped with your computer and follow the steps in "Before You Begin" on page 9. After working inside your computer, follow the instructions in "After Working Inside Your Computer" on page 11. For additional safety best practices information, see the Regulatory Compliance Homepage at dell.com/regulatory_compliance.

Procedure

- 1 Align the notch on the memory module with the tab on the memory-module connector.
- 2 Slide the memory module firmly, at a 45-degree angle into the connector, and press the memory module down until it clicks into place.






NOTE: If you do not hear the click, remove the memory module and reinstall it.

Postrequisites

- 1 Replace the base cover. See "Replacing the Base Cover" on page 21.
- 2 Replace the battery. See "Replacing the Battery" on page 13.

Removing the Hard Drive

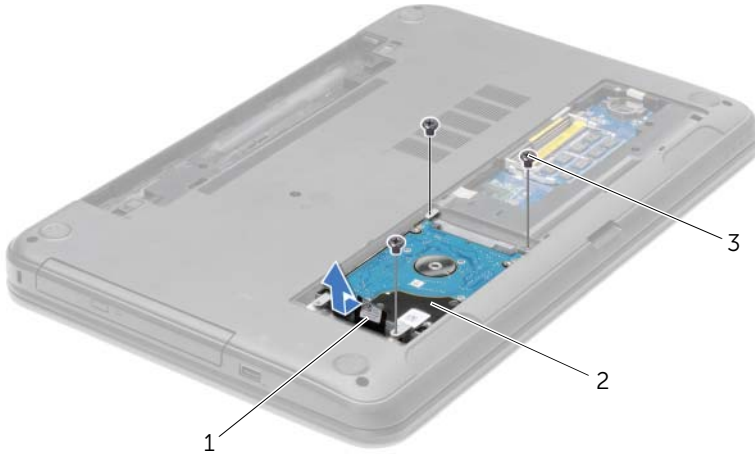
-  **WARNING:** Before working inside your computer, read the safety information that shipped with your computer and follow the steps in "Before You Begin" on page 9. After working inside your computer, follow the instructions in "After Working Inside Your Computer" on page 11. For additional safety best practices information, see the Regulatory Compliance Homepage at dell.com/regulatory_compliance.
-  **CAUTION:** To avoid data loss, do not remove the hard drive while the computer is in Sleep or On state.
-  **CAUTION:** Hard drives are extremely fragile. Exercise care when handling the hard drive.

Prerequisites

- 1 Remove the battery. See "Removing the Battery" on page 12.
- 2 Remove the base cover. See "Removing the Base Cover" on page 20.

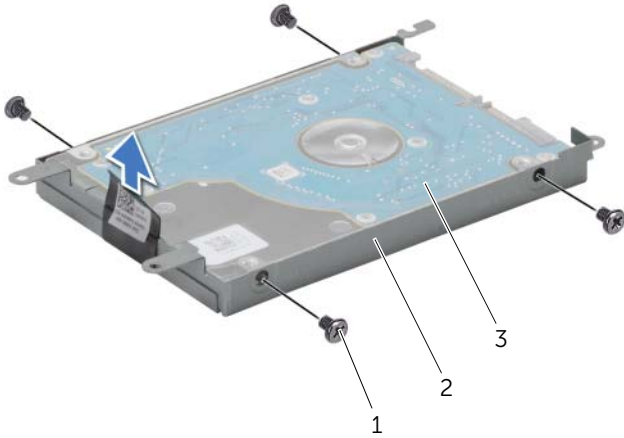
Procedure

- 1 Remove the screws that secure the hard-drive assembly to the computer base.
- 2 Using the pull tab, slide the hard-drive assembly towards the side of the computer to disconnect the hard-drive assembly from the system board.
- 3 Using the pull tab, lift the hard-drive assembly off the computer base.



1	pull-tab	2	hard-drive assembly
3	screws (3)		

- 4 Remove the screws that secure the hard-drive bracket to the hard drive.
- 5 Using the pull-tab, lift the hard-drive bracket off the hard drive.



1	screws (4)	2	hard-drive bracket
3	hard drive		

Replacing the Hard Drive



WARNING: Before working inside your computer, read the safety information that shipped with your computer and follow the steps in "Before You Begin" on page 9. After working inside your computer, follow the instructions in "After Working Inside Your Computer" on page 11. For additional safety best practices information, see the Regulatory Compliance Homepage at dell.com/regulatory_compliance.



CAUTION: Hard drives are extremely fragile. Exercise care when handling the hard drive.

Procedure

- 1 Align the screw holes on the hard-drive bracket with the screw holes on the hard drive.
- 2 Replace the screws that secure the hard-drive bracket to the hard drive.
- 3 Place the hard-drive assembly in the hard-drive bay.
- 4 Slide the hard-drive assembly towards the connector to connect the hard-drive assembly to the system board.
- 5 Replace the screws that secure the hard-drive assembly to the computer base.

Postrequisites

- 1 Replace the base cover. See "Replacing the Base Cover" on page 21.
- 2 Replace the battery. See "Replacing the Battery" on page 13.

Removing the Coin-Cell Battery

⚠ WARNING: Before working inside your computer, read the safety information that shipped with your computer and follow the steps in "Before You Begin" on page 9. After working inside your computer, follow the instructions in "After Working Inside Your Computer" on page 11. For additional safety best practices information, see the Regulatory Compliance Homepage at dell.com/regulatory_compliance.

⚠ CAUTION: Removing the coin-cell battery resets the BIOS settings to default. It is recommended that you note the BIOS settings before removing the coin-cell battery.

Prerequisites

- 1 Remove the battery. See "Removing the Battery" on page 12.
- 2 Remove the base cover. See "Removing the Base Cover" on page 20.


Procedure


Using a plastic scribe, gently pry out the coin-cell battery out of the battery socket on the system board.



1	plastic scribe	2	coin-cell battery
3	battery socket		

Replacing the Coin-Cell Battery

 **WARNING:** Before working inside your computer, read the safety information that shipped with your computer and follow the steps in "Before You Begin" on page 9. After working inside your computer, follow the instructions in "After Working Inside Your Computer" on page 11. For additional safety best practices information, see the Regulatory Compliance Homepage at dell.com/regulatory_compliance.

 **WARNING:** The battery may explode if installed incorrectly. Replace the battery only with the same or equivalent type. Discard used batteries according to the manufacturer's instructions.

Procedure

With the positive-side facing up, snap the coin-cell battery into the battery socket on the system board.

Postrequisites

- 1 Replace the base cover. See "Replacing the Base Cover" on page 21.
- 2 Replace the battery. See "Replacing the Battery" on page 13.

Removing the Palm-Rest

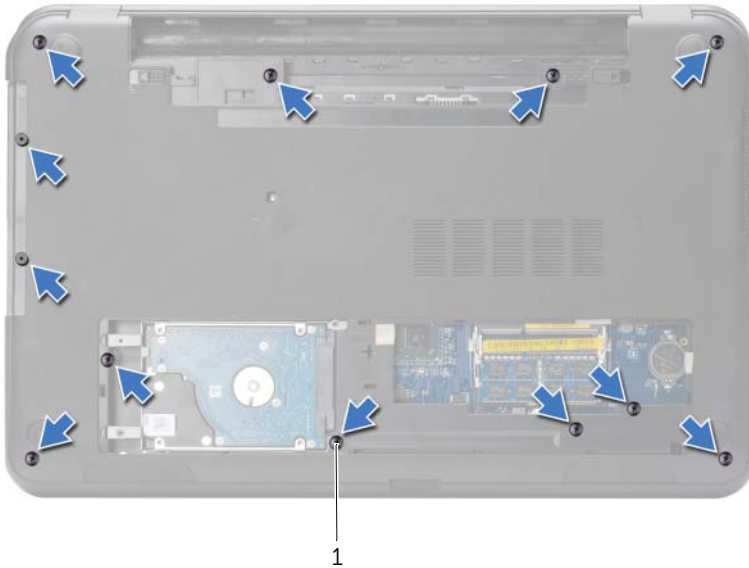
⚠ WARNING: Before working inside your computer, read the safety information that shipped with your computer and follow the steps in "Before You Begin" on page 9. After working inside your computer, follow the instructions in "After Working Inside Your Computer" on page 11. For additional safety best practices information, see the Regulatory Compliance Homepage at dell.com/regulatory_compliance.

Prerequisites

- 1 Remove the battery. See "Removing the Battery" on page 12.
- 2 Remove the base cover. See "Removing the Base Cover" on page 20.
- 3 Remove the keyboard. See "Removing the Keyboard" on page 17.

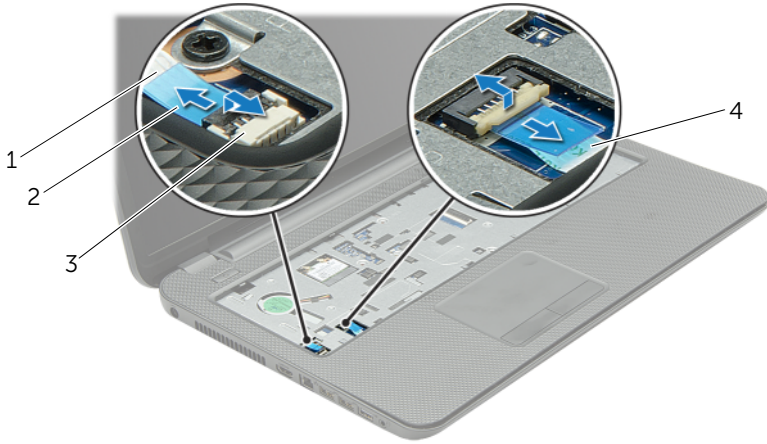
Procedure

- 1 Remove the screws that secure the palm-rest to the computer base.



1 screws (12)

- 2 Turn the computer over and open the display as far as possible.
- 3 Lift the connector latches and, using the pull-tabs, disconnect the power-button cable and touchpad cable from the system board.



1	power-button cable	2	connector latches (2)
3	pull-tab	4	touchpad cable

- 4 Remove the screws that secure the palm-rest to the computer base.
- 5 Using a plastic scribe, gently lift and release the tabs on the palm-rest from the slots on the computer base.

△ CAUTION: Separate the palm-rest from the display assembly carefully to avoid damage to the display assembly.

- 6 Lift the palm-rest off the computer base.



1	screws (5)	2	palm-rest
3	plastic scribe		

Replacing the Palm-Rest



WARNING: Before working inside your computer, read the safety information that shipped with your computer and follow the steps in "Before You Begin" on page 9. After working inside your computer, follow the instructions in "After Working Inside Your Computer" on page 11. For additional safety best practices information, see the Regulatory Compliance Homepage at dell.com/regulatory_compliance.

Procedure

- 1 Align the palm-rest to the computer base.
- 2 Press down on the edges of the palm-rest to snap it into place.
- 3 Replace the screws that secure the palm-rest to the computer base.
- 4 Slide the touchpad cable and the power-button cable into the system-board connectors and press down on the connector latches to secure the cables.
- 5 Close the display and turn the computer over.
- 6 Replace the screws that secure the palm-rest to the computer base.

Postrequisites

- 1 Replace the keyboard. See "Replacing the Keyboard" on page 19.
- 2 Replace the base cover. See "Replacing the Base Cover" on page 21.
- 3 Replace the battery. See "Replacing the Battery" on page 13.

Removing the Wireless Mini-Card

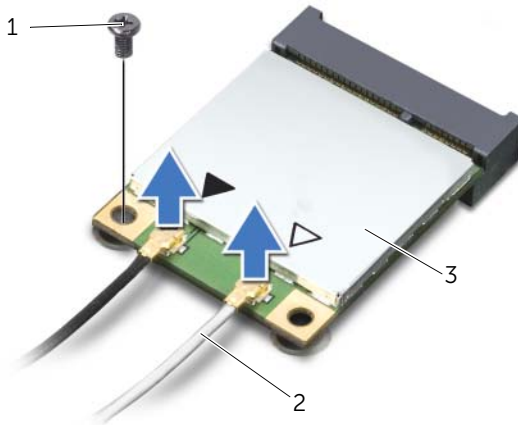
⚠ WARNING: Before working inside your computer, read the safety information that shipped with your computer and follow the steps in "Before You Begin" on page 9. After working inside your computer, follow the instructions in "After Working Inside Your Computer" on page 11. For additional safety best practices information, see the Regulatory Compliance Homepage at dell.com/regulatory_compliance.

Prerequisites

- 1 Remove the battery. See "Removing the Battery" on page 12.
- 2 Remove the base cover. See "Removing the Base Cover" on page 20.
- 3 Remove the keyboard. See "Removing the Keyboard" on page 17.
- 4 Remove the palm-rest. See "Removing the Palm-Rest" on page 30.

Procedure

- 1 Disconnect the antenna cables from the wireless mini-card.
- 2 Remove the screw that secures the wireless mini-card to the system board.

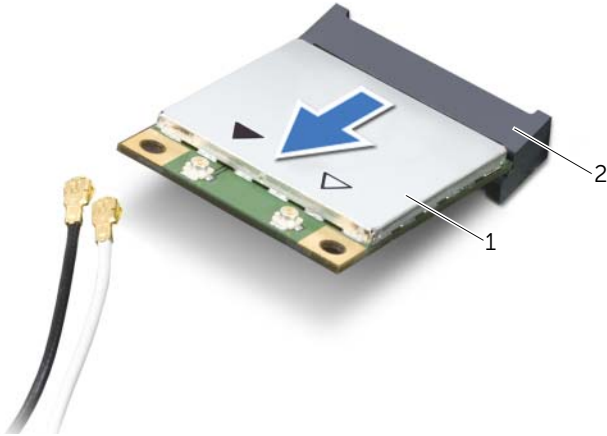


1 screw

2 antenna cables (2)

3 wireless mini-card


3 Slide and remove the wireless mini-card out of the mini-card connector.




1 wireless mini-card

2 mini-card connector

Replacing the Wireless Mini-Card

 **WARNING:** Before working inside your computer, read the safety information that shipped with your computer and follow the steps in "Before You Begin" on page 9. After working inside your computer, follow the instructions in "After Working Inside Your Computer" on page 11. For additional safety best practices information, see the Regulatory Compliance Homepage at dell.com/regulatory_compliance.

Procedure

 **CAUTION:** To avoid damage to the wireless mini-card, ensure that no cables are placed under the wireless mini-card.

- 1 Align the notch on the wireless mini-card with the tab on the mini-card connector.
- 2 Insert the wireless mini-card at a 45-degree angle into the mini-card connector.
- 3 Press the other end of the wireless mini-card down and replace the screw that secures the wireless mini-card to the system board.
- 4 Connect the antenna cables to the wireless mini-card.

The following table provides the antenna cable color schemes for the wireless mini-card supported by your computer.

Connectors on the wireless mini-card	Antenna cable color schemes
WLAN + Bluetooth (2 cables)	
Main WLAN + Bluetooth (white triangle)	white
Auxiliary WLAN + Bluetooth (black triangle)	black

Postrequisites

- 1 Replace the palm-rest. See "Replacing the Palm-Rest" on page 33.
- 2 Replace the keyboard. See "Replacing the Keyboard" on page 19.
- 3 Replace the base cover. See "Replacing the Base Cover" on page 21.
- 4 Replace the battery. See "Replacing the Battery" on page 13.

Removing the I/O Board

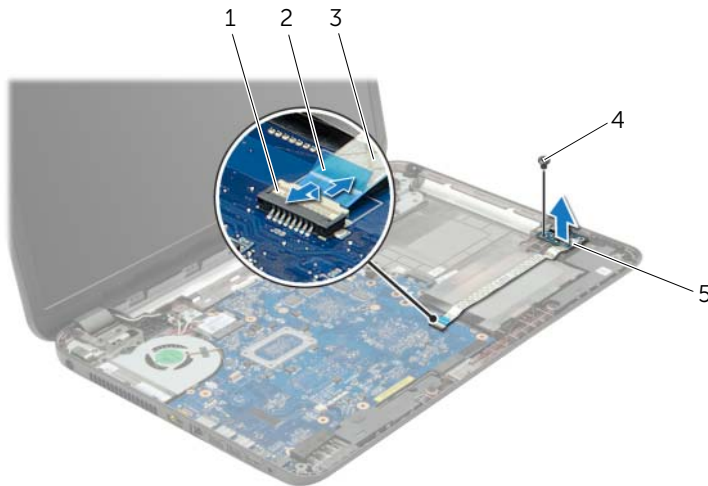
WARNING: Before working inside your computer, read the safety information that shipped with your computer and follow the steps in "Before You Begin" on page 9. After working inside your computer, follow the instructions in "After Working Inside Your Computer" on page 11. For additional safety best practices information, see the Regulatory Compliance Homepage at dell.com/regulatory_compliance.

Prerequisites

- 1 Remove the battery. See "Removing the Battery" on page 12.
- 2 Remove the base cover. See "Removing the Base Cover" on page 20.
- 3 Remove the keyboard. See "Removing the Keyboard" on page 17.
- 4 Remove the palm-rest. See "Removing the Palm-Rest" on page 30.

Procedure

- 1 Remove the screw that secures the I/O board to the computer base.
- 2 Lift the connector latch and, using the pull-tab, disconnect the I/O-board cable from the system board.
- 3 Peel the I/O board cable from the computer base.
- 4 Lift the I/O board along with its cable off the computer base.



1	connector latch	2	pull-tab
3	I/O board cable	4	screw
5	I/O board		

Replacing the I/O Board



WARNING: Before working inside your computer, read the safety information that shipped with your computer and follow the steps in "Before You Begin" on page 9. After working inside your computer, follow the instructions in "After Working Inside Your Computer" on page 11. For additional safety best practices information, see the Regulatory Compliance Homepage at dell.com/regulatory_compliance.

Procedure

- 1 Use the alignment posts on the computer base to place the I/O board in position.
- 2 Replace the screw that secures the I/O board to the computer base.
- 3 Adhere the I/O board cable to the computer base.
- 4 Slide the I/O-board cable into the I/O-board-cable connector and press down on the connector latch to secure the cable.

Postrequisites

- 1 Replace the palm-rest. See "Replacing the Palm-Rest" on page 33.
- 2 Replace the keyboard. See "Replacing the Keyboard" on page 19.
- 3 Replace the base cover. See "Replacing the Base Cover" on page 21.
- 4 Replace the battery. See "Replacing the Battery" on page 13.

Removing the System Board



WARNING: Before working inside your computer, read the safety information that shipped with your computer and follow the steps in "Before You Begin" on page 9. After working inside your computer, follow the instructions in "After Working Inside Your Computer" on page 11. For additional safety best practices information, see the Regulatory Compliance Homepage at dell.com/regulatory_compliance.



NOTE: Your computer's Service Tag is stored in the system board. You must enter the Service Tag in system setup after you replace the system board.



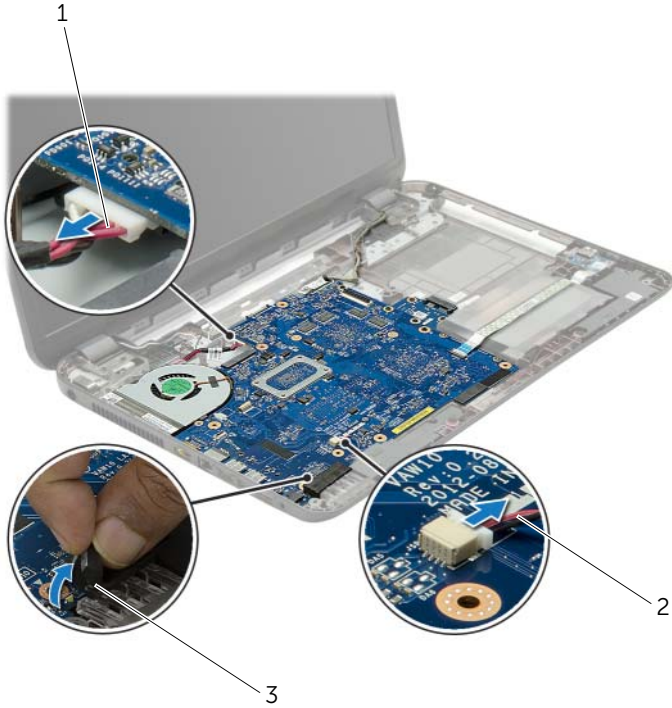
NOTE: Before disconnecting the cables from the system board, note the location of the connectors so that you can reconnect them correctly after you replace the system board.

Prerequisites

- 1 Remove the battery. See "Removing the Battery" on page 12.
- 2 Follow the instructions from step 1 to step 2 in "Removing the Optical Drive" on page 14.
- 3 Remove the base cover. See "Removing the Base Cover" on page 20.
- 4 Remove the memory module(s). See "Removing the Memory Module(s)" on page 22.
- 5 Remove the coin-cell battery. See "Removing the Coin-Cell Battery" on page 28.
- 6 Follow the instructions from step 1 to step 3 in "Removing the Hard Drive" on page 24.
- 7 Remove the keyboard. See "Removing the Keyboard" on page 17.
- 8 Remove the palm-rest. See "Removing the Palm-Rest" on page 30.
- 9 Remove the wireless Mini-Card. See "Removing the Wireless Mini-Card" on page 34.

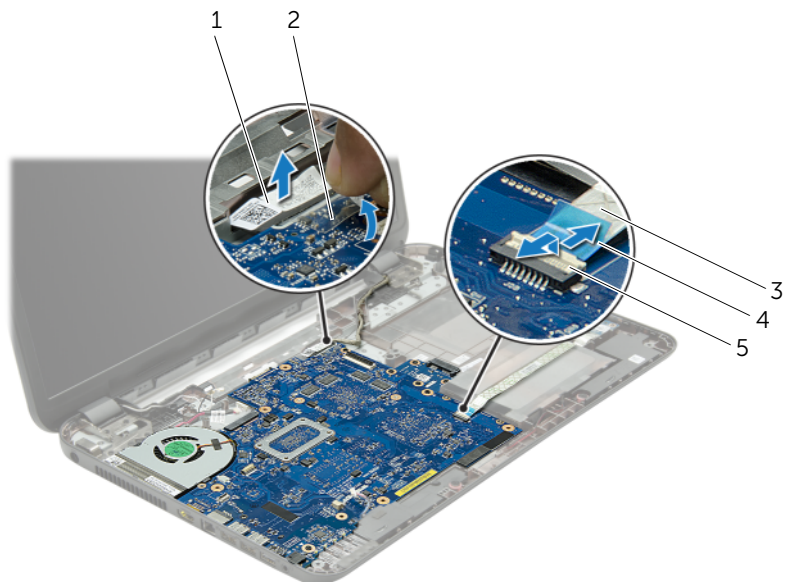
Procedure

- 1 Disconnect the power-adaptor-port cable and the speaker cable from the system board.
- 2 Peel the mylar sleeve from the system board.



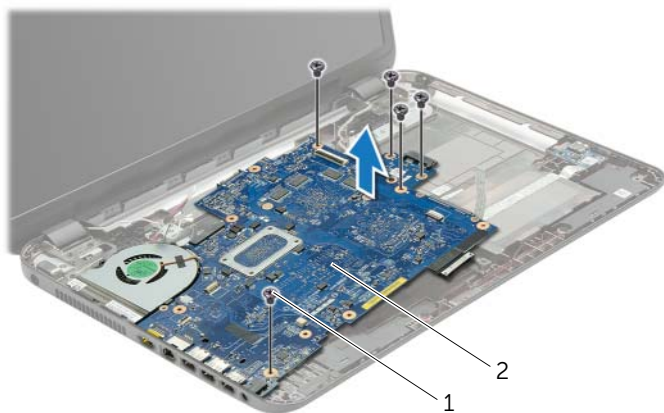
1	power-adaptor-port cable	2	speaker cable
3	mylar sleeve		

- 3 Peel the tape that secures the display cable to the system board and disconnect the display cable from the system board.
- 4 Lift the connector latch and, using the pull-tab, disconnect the I/O-board cable from the system board.



1	Display cable	2	tape
3	I/O-board cable	4	pull-tab
5	connector latch		

- 5 Remove the screws that secure the system board to the computer base.
- 6 Lift the system board at an angle and release the system-board ports from the slots on the computer base.
- 7 Lift the system-board assembly off the computer base.
- 8 Remove the hard-drive interposer board. See "Removing the Hard-Drive Interposer Board" on page 51



1 screws (5)

2 system board

- 9 Turn the system board over.
- 10 Remove the fan. See "Removing the Fan" on page 45.
- 11 Remove the cooling assembly. See "Removing the Cooling Assembly" on page 48.

Replacing the System Board



WARNING: Before working inside your computer, read the safety information that shipped with your computer and follow the steps in "Before You Begin" on page 9. After working inside your computer, follow the instructions in "After Working Inside Your Computer" on page 11. For additional safety best practices information, see the Regulatory Compliance Homepage at dell.com/regulatory_compliance.



NOTE: Your computer's Service Tag is stored in the system board. You must enter the Service Tag in the system setup after you replace the system board.

Procedure

- 1 Replace the cooling assembly. See "Replacing the Cooling Assembly" on page 50.
- 2 Replace the fan. See "Replacing the Fan" on page 47.
- 3 Turn the system board over.
- 4 Replace the hard-drive interposer board. See "Replacing the Hard-Drive Interposer Board" on page 53.
- 5 Ease the system-board ports into the slots on the computer base and align the screw holes on the system board with the screw holes on the computer base.
- 6 Replace the screw that secures the system board to the computer base.
- 7 Adhere the mylar sleeve to the system board.
- 8 Connect the display cable to the system board and adhere the tape to the system board.
- 9 Slide the I/O-board cable into the I/O-board cable connector and press down on the connector latch to secure the cable.
- 10 Connect the power-adaptor-port cable and the speaker cable to the system board.

Postrequisites

- 1 Replace the wireless Mini-Card. See "Replacing the Wireless Mini-Card" on page 36.
- 2 Replace the palm-rest. See "Replacing the Palm-Rest" on page 33.
- 3 Replace the keyboard. See "Replacing the Keyboard" on page 19.
- 4 Follow the instructions from step 3 to step 5 in "Replacing the Hard Drive" on page 27.
- 5 Replace the coin-cell battery. See "Replacing the Coin-Cell Battery" on page 29.
- 6 Replace the memory module(s). See "Replacing the Memory Module(s)" on page 23.
- 7 Replace the base cover. See "Replacing the Base Cover" on page 21.
- 8 Follow the instructions from step 3 to step 4 in "Replacing the Optical Drive" on page 16.
- 9 Replace the battery. See "Replacing the Battery" on page 13.

Removing the Fan



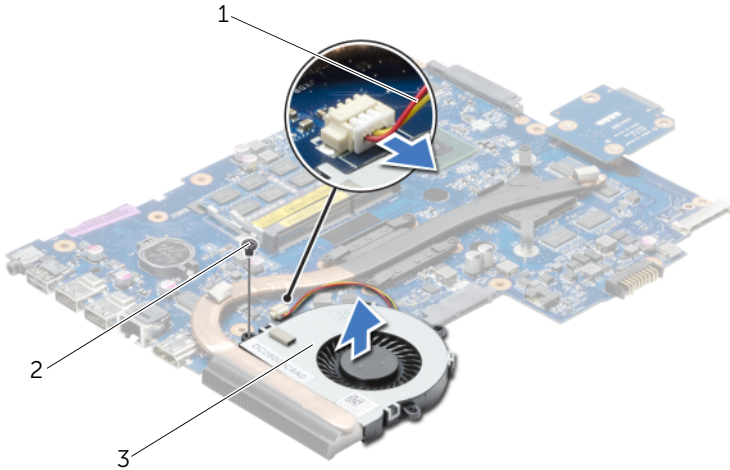
WARNING: Before working inside your computer, read the safety information that shipped with your computer and follow the steps in "Before You Begin" on page 9. After working inside your computer, follow the instructions in "After Working Inside Your Computer" on page 11. For additional safety best practices information, see the Regulatory Compliance Homepage at dell.com/regulatory_compliance.

Prerequisites

- 1 Remove the battery. See "Removing the Battery" on page 12.
- 2 Follow the instructions from step 1 to step 2 in "Removing the Optical Drive" on page 14.
- 3 Follow the instructions from step 1 to step 3 in "Removing the Hard Drive" on page 24.
- 4 Remove the base cover. See "Removing the Base Cover" on page 20.
- 5 Remove the keyboard. See "Removing the Keyboard" on page 17.
- 6 Remove the palm-rest. See "Removing the Palm-Rest" on page 30.
- 7 Follow the instructions from step 3 to step 9 in "Removing the System Board" on page 39.

Procedure

- 1 Disconnect the fan cable from the system board.
- 2 Remove the screw that secures the fan to the system board.
- 3 Lift the fan along with the cable, off the computer base.



1	fan cable	2	screw
---	-----------	---	-------

3	fan
---	-----

Replacing the Fan



WARNING: Before working inside your computer, read the safety information that shipped with your computer and follow the steps in "Before You Begin" on page 9. After working inside your computer, follow the instructions in "After Working Inside Your Computer" on page 11. For additional safety best practices information, see the Regulatory Compliance Homepage at dell.com/regulatory_compliance.

Procedure

- 1 Place the fan on the computer base and replace the screw that secures the fan to the computer base.
- 2 Connect the fan cable to the system board.

Postrequisites

- 1 Follow the instructions from step 3 to step 10 in "Replacing the System Board" on page 43.
- 2 Replace the palm-rest. See "Replacing the Palm-Rest" on page 33.
- 3 Replace the keyboard. See "Replacing the Keyboard" on page 19.
- 4 Replace the base cover. See "Replacing the Base Cover" on page 21.
- 5 Follow the instructions from step 3 to step 4 in "Replacing the Optical Drive" on page 16.
- 6 Follow the instructions from step 3 to step 5 in "Replacing the Hard Drive" on page 27.
- 7 Replace the battery. See "Replacing the Battery" on page 13.

Removing the Cooling Assembly



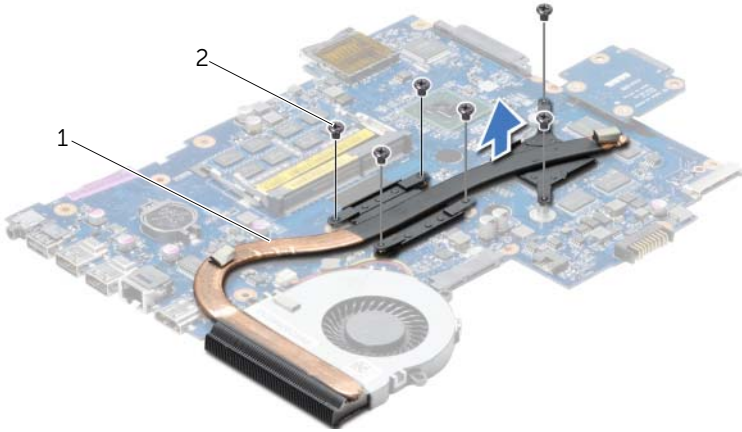
WARNING: Before working inside your computer, read the safety information that shipped with your computer and follow the steps in "Before You Begin" on page 9. After working inside your computer, follow the instructions in "After Working Inside Your Computer" on page 11. For additional safety best practices information, see the Regulatory Compliance Homepage at dell.com/regulatory_compliance.

Prerequisites

- 1 Remove the battery. See "Removing the Battery" on page 12.
- 2 Follow the instructions from step 1 to step 2 in "Removing the Optical Drive" on page 14.
- 3 Follow the instructions from step 1 to step 3 in "Removing the Hard Drive" on page 24.
- 4 Remove the base cover. See "Removing the Base Cover" on page 20.
- 5 Remove the keyboard. See "Removing the Keyboard" on page 17.
- 6 Remove the palm-rest. See "Removing the Palm-Rest" on page 30.
- 7 Follow the instructions from step 3 to step 9 in "Removing the System Board" on page 39.

Procedure

- 1 In sequential order (indicated on the heat-sink), remove the screws that secure the cooling assembly to the system board.
- 2 Lift the cooling assembly off the system board.



1 cooling assembly

2 screws (6)

Replacing the Cooling Assembly



WARNING: Before working inside your computer, read the safety information that shipped with your computer and follow the steps in "Before You Begin" on page 9. After working inside your computer, follow the instructions in "After Working Inside Your Computer" on page 11. For additional safety best practices information, see the Regulatory Compliance Homepage at dell.com/regulatory_compliance.

Procedure

- 1 Clean the grease from the bottom of the cooling assembly and reapply it.
- 2 Align the screw holes on the cooling assembly with the screw holes on the system board.
- 3 In sequential order (indicated on the heat-sink), replace the screws that secure the cooling assembly to the system board

Postrequisites

- 1 Follow the instructions from step 3 to step 10 in "Replacing the System Board" on page 43.
- 2 Replace the palm-rest. See "Replacing the Palm-Rest" on page 33.
- 3 Replace the keyboard. See "Replacing the Keyboard" on page 19.
- 4 Replace the base cover. See "Replacing the Base Cover" on page 21.
- 5 Follow the instructions from step 3 to step 4 in "Replacing the Optical Drive" on page 16.
- 6 Follow the instructions from step 3 to step 5 in "Replacing the Hard Drive" on page 27.
- 7 Replace the battery. See "Replacing the Battery" on page 13.

Removing the Hard-Drive Interposer Board



WARNING: Before working inside your computer, read the safety information that shipped with your computer and follow the steps in "Before You Begin" on page 9. After working inside your computer, follow the instructions in "After Working Inside Your Computer" on page 11. For additional safety best practices information, see the Regulatory Compliance Homepage at dell.com/regulatory_compliance.

Prerequisites

- 1 Remove the battery. See "Removing the Battery" on page 12.
- 2 Follow the instructions from step 1 to step 2 in "Removing the Optical Drive" on page 14.
- 3 Follow the instructions from step 1 to step 3 in "Removing the Hard Drive" on page 24.
- 4 Remove the base cover. See "Removing the Base Cover" on page 20.
- 5 Remove the keyboard. See "Removing the Keyboard" on page 17.
- 6 Remove the palm-rest. See "Removing the Palm-Rest" on page 30.
- 7 Follow the instructions from step 3 to step 9 in "Removing the System Board" on page 39.

Procedure

- 1 Remove the screws that secure the hard-drive interposer board to the system board.
- 2 Disconnect the hard-drive interposer board from the system board.



1 screws (2)

2 hard-drive interposer board

Replacing the Hard-Drive Interposer Board



WARNING: Before working inside your computer, read the safety information that shipped with your computer and follow the steps in "Before You Begin" on page 9. After working inside your computer, follow the instructions in "After Working Inside Your Computer" on page 11. For additional safety best practices information, see the Regulatory Compliance Homepage at dell.com/regulatory_compliance.

Procedure

- 1 Connect the hard-drive interposer board to the system board.
- 2 Replace screws that secure the hard-drive interposer board to the system board.

Postrequisites

- 1 Follow the instructions from step 3 to step 10 in "Replacing the System Board" on page 43.
- 2 Replace the palm-rest. See "Replacing the Palm-Rest" on page 33.
- 3 Replace the keyboard. See "Replacing the Keyboard" on page 19.
- 4 Replace the base cover. See "Replacing the Base Cover" on page 21.
- 5 Follow the instructions from step 3 to step 4 in "Replacing the Optical Drive" on page 16.
- 6 Follow the instructions from step 3 to step 5 in "Replacing the Hard Drive" on page 27.
- 7 Replace the battery. See "Replacing the Battery" on page 13.

Removing the Speakers



WARNING: Before working inside your computer, read the safety information that shipped with your computer and follow the steps in "Before You Begin" on page 9. After working inside your computer, follow the instructions in "After Working Inside Your Computer" on page 11. For additional safety best practices information, see the Regulatory Compliance Homepage at dell.com/regulatory_compliance.

Prerequisites

- 1 Remove the battery. See "Removing the Battery" on page 12.
- 2 Follow the instructions from step 1 to step 2 in "Removing the Optical Drive" on page 14.
- 3 Follow the instructions from step 1 to step 3 in "Removing the Hard Drive" on page 24.
- 4 Remove the base cover. See "Removing the Base Cover" on page 20.
- 5 Remove the keyboard. See "Removing the Keyboard" on page 17.
- 6 Remove the palm-rest. See "Removing the Palm-Rest" on page 30.
- 7 Follow the instructions from step 3 to step 7 in "Removing the System Board" on page 39.

Procedure

- 1 Remove the screws that secure the speakers to the computer base.
- 2 Note the speaker-cable routing and remove the cable from its routing guides.
- 3 Lift the speakers, along with the speaker cable, off the computer base.



1	screws (4)	2	speaker cable
3	speakers (2)		

Replacing the Speakers



WARNING: Before working inside your computer, read the safety information that shipped with your computer and follow the steps in "Before You Begin" on page 9. After working inside your computer, follow the instructions in "After Working Inside Your Computer" on page 11. For additional safety best practices information, see the Regulatory Compliance Homepage at dell.com/regulatory_compliance.

Procedure

- 1 Using the alignment posts on the computer base, place the speakers in position.
- 2 Route the speakers cable through the routing guides on the computer base.
- 3 Replace the screws that secure the speakers to the computer base.

Postrequisites

- 1 Follow the instructions from step 3 to step 10 in "Replacing the System Board" on page 43.
- 2 Replace the palm-rest. See "Replacing the Palm-Rest" on page 33.
- 3 Replace the keyboard. See "Replacing the Keyboard" on page 19.
- 4 Replace the base cover. See "Replacing the Base Cover" on page 21.
- 5 Follow the instructions from step 3 to step 4 in "Replacing the Optical Drive" on page 16.
- 6 Follow the instructions from step 3 to step 5 in "Replacing the Hard Drive" on page 27.
- 7 Replace the battery. See "Replacing the Battery" on page 13.

Removing the Display Assembly



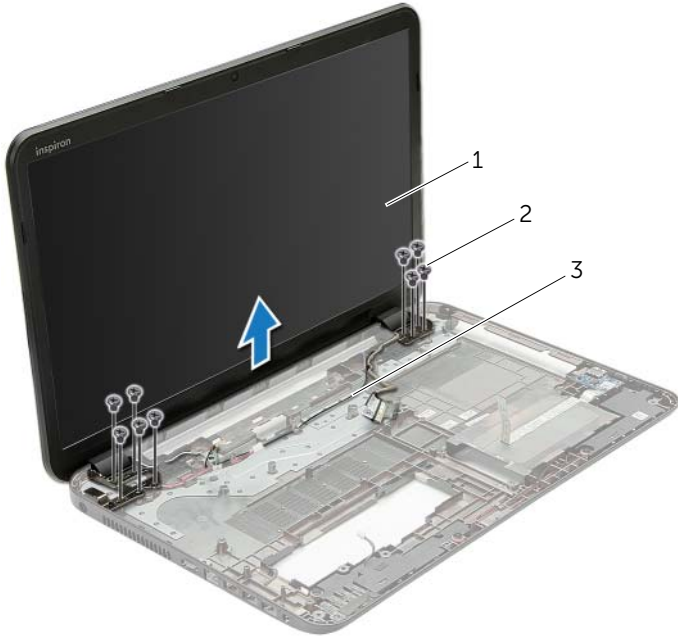
WARNING: Before working inside your computer, read the safety information that shipped with your computer and follow the steps in "Before You Begin" on page 9. After working inside your computer, follow the instructions in "After Working Inside Your Computer" on page 11. For additional safety best practices information, see the Regulatory Compliance Homepage at dell.com/regulatory_compliance.

Prerequisites

- 1 Remove the battery. See "Removing the Battery" on page 12.
- 2 Follow the instructions from step 1 to step 2 in "Removing the Optical Drive" on page 14.
- 3 Follow the instructions from step 1 to step 3 in "Removing the Hard Drive" on page 24.
- 4 Remove the base cover. See "Removing the Base Cover" on page 20.
- 5 Remove the keyboard. See "Removing the Keyboard" on page 17.
- 6 Remove the palm-rest. See "Removing the Palm-Rest" on page 30.
- 7 Follow the instructions from step 3 to step 7 in "Removing the System Board" on page 39.

Procedure

- 1 Note the antenna cable routing and remove the cable from its routing guides.
- 2 Remove the screws that secure the display assembly to the computer base.
- 3 Lift the display assembly off the computer base.



1	display assembly	2	screws (9)
3	routing guides		

Replacing the Display Assembly



WARNING: Before working inside your computer, read the safety information that shipped with your computer and follow the steps in "Before You Begin" on page 9. After working inside your computer, follow the instructions in "After Working Inside Your Computer" on page 11. For additional safety best practices information, see the Regulatory Compliance Homepage at dell.com/regulatory_compliance.

Procedure

- 1 Place the display assembly on the computer base and align the screw holes on the display assembly with the screw holes on the computer base.
- 2 Replace the screws that secure the display assembly to the computer base.
- 3 Route the antenna cable through the routing guides on the computer base.

Postrequisites

- 1 Follow the instructions from step 3 to step 10 in "Replacing the System Board" on page 43.
- 2 Replace the palm-rest. See "Replacing the Palm-Rest" on page 33.
- 3 Replace the keyboard. See "Replacing the Keyboard" on page 19.
- 4 Replace the base cover. See "Replacing the Base Cover" on page 21.
- 5 Follow the instructions from step 3 to step 4 in "Replacing the Optical Drive" on page 16.
- 6 Follow the instructions from step 3 to step 5 in "Replacing the Hard Drive" on page 27.
- 7 Replace the battery. See "Replacing the Battery" on page 13.

Removing the Display Bezel



WARNING: Before working inside your computer, read the safety information that shipped with your computer and follow the steps in "Before You Begin" on page 9. After working inside your computer, follow the instructions in "After Working Inside Your Computer" on page 11. For additional safety best practices information, see the Regulatory Compliance Homepage at dell.com/regulatory_compliance.

Prerequisites

- 1 Remove the battery. See "Removing the Battery" on page 12.
- 2 Follow the instructions from step 1 to step 2 in "Removing the Optical Drive" on page 14.
- 3 Follow the instructions from step 1 to step 3 in "Removing the Hard Drive" on page 24.
- 4 Remove the base cover. See "Removing the Base Cover" on page 20.
- 5 Remove the keyboard. See "Removing the Keyboard" on page 17.
- 6 Remove the palm-rest. See "Removing the Palm-Rest" on page 30.
- 7 Follow the instructions from step 3 to step 7 in "Removing the System Board" on page 39.
- 8 Remove the display assembly. See "Removing the Display Assembly" on page 57.

Procedure

- 1 Using your fingertips, carefully pry up the inside edge of the display bezel.
- 2 Remove the display bezel off the display back-cover.



1 display bezel

Replacing the Display Bezel



WARNING: Before working inside your computer, read the safety information that shipped with your computer and follow the steps in "Before You Begin" on page 9. After working inside your computer, follow the instructions in "After Working Inside Your Computer" on page 11. For additional safety best practices information, see the Regulatory Compliance Homepage at dell.com/regulatory_compliance.

Procedure

Align the display bezel with the display back-cover, and gently snap the display bezel into place.

Postrequisites

- 1 Replace the display assembly. See "Replacing the Display Assembly" on page 59.
- 2 Follow the instructions from step 3 to step 10 in "Replacing the System Board" on page 43.
- 3 Replace the palm-rest. See "Replacing the Palm-Rest" on page 33.
- 4 Replace the keyboard. See "Replacing the Keyboard" on page 19.
- 5 Replace the base cover. See "Replacing the Base Cover" on page 21.
- 6 Follow the instructions from step 3 to step 4 in "Replacing the Optical Drive" on page 16.
- 7 Follow the instructions from step 3 to step 5 in "Replacing the Hard Drive" on page 27.
- 8 Replace the battery. See "Replacing the Battery" on page 13.

Removing the Display Hinges



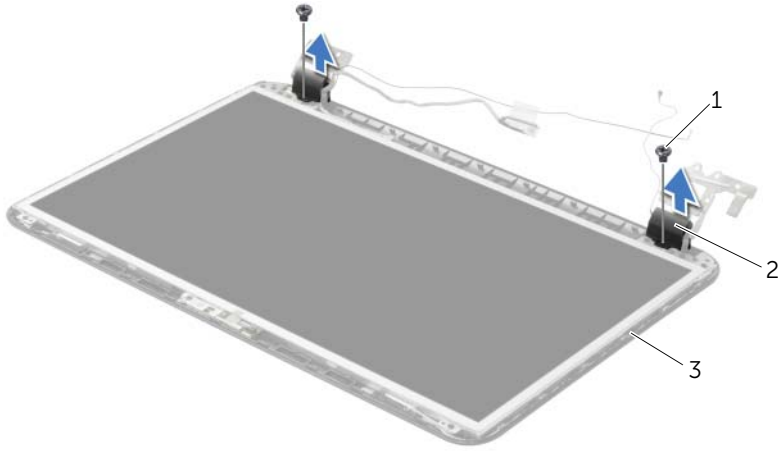
WARNING: Before working inside your computer, read the safety information that shipped with your computer and follow the steps in "Before You Begin" on page 9. After working inside your computer, follow the instructions in "After Working Inside Your Computer" on page 11. For additional safety best practices information, see the Regulatory Compliance Homepage at dell.com/regulatory_compliance.

Prerequisites

- 1 Remove the battery. See "Removing the Battery" on page 12.
- 2 Follow the instructions from step 1 to step 2 in "Removing the Optical Drive" on page 14.
- 3 Follow the instructions from step 1 to step 3 in "Removing the Hard Drive" on page 24.
- 4 Remove the base cover. See "Removing the Base Cover" on page 20.
- 5 Remove the keyboard. See "Removing the Keyboard" on page 17.
- 6 Remove the palm-rest. See "Removing the Palm-Rest" on page 30.
- 7 Follow the instructions from step 3 to step 7 in "Removing the System Board" on page 39.
- 8 Remove the display assembly. See "Removing the Display Assembly" on page 57.
- 9 Remove the display bezel. See "Removing the Display Bezel" on page 60.

Procedure

- 1 Remove the screws that secure the display hinges to the display back-cover.
- 2 Lift the display hinges off the display back-cover.



1	screws (2)	2	display hinges (2)
3	display back-cover		

Replacing the Display Hinges



WARNING: Before working inside your computer, read the safety information that shipped with your computer and follow the steps in "Before You Begin" on page 9. After working inside your computer, follow the instructions in "After Working Inside Your Computer" on page 11. For additional safety best practices information, see the Regulatory Compliance Homepage at dell.com/regulatory_compliance.

Procedure

- 1 Align the screw holes on the display hinges with the screw holes on the display back-cover.
- 2 Replace the screws that secure the display hinges to the display back-cover.

Postrequisites

- 1 Replace the display bezel. See "Replacing the Display Bezel" on page 62.
- 2 Replace the display assembly. See "Replacing the Display Assembly" on page 59.
- 3 Follow the instructions from step 3 to step 10 in "Replacing the System Board" on page 43.
- 4 Replace the palm-rest. See "Replacing the Palm-Rest" on page 33.
- 5 Replace the keyboard. See "Replacing the Keyboard" on page 19.
- 6 Replace the base cover. See "Replacing the Base Cover" on page 21.
- 7 Follow the instructions from step 3 to step 4 in "Replacing the Optical Drive" on page 16.
- 8 Follow the instructions from step 1 to step 3 in "Removing the Hard Drive" on page 24.
- 9 Replace the battery. See "Replacing the Battery" on page 13.

Removing the Display Panel



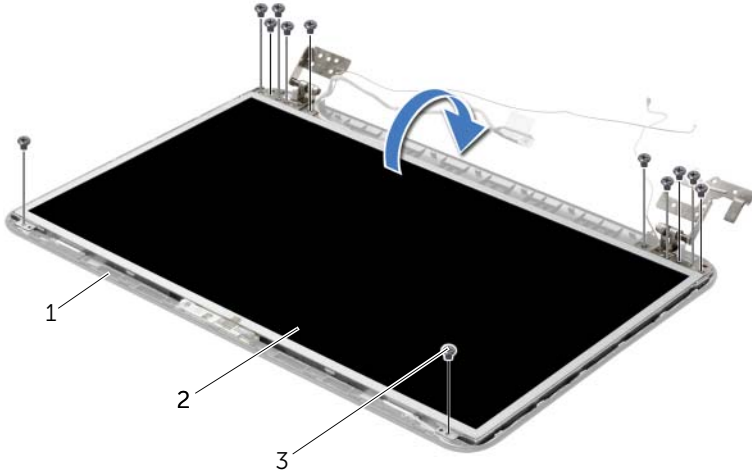
WARNING: Before working inside your computer, read the safety information that shipped with your computer and follow the steps in "Before You Begin" on page 9. After working inside your computer, follow the instructions in "After Working Inside Your Computer" on page 11. For additional safety best practices information, see the Regulatory Compliance Homepage at dell.com/regulatory_compliance.

Prerequisites

- 1 Remove the battery. See "Removing the Battery" on page 12.
- 2 Follow the instructions from step 1 to step 2 in "Removing the Optical Drive" on page 14.
- 3 Follow the instructions from step 1 to step 3 in "Removing the Hard Drive" on page 24.
- 4 Remove the base cover. See "Removing the Base Cover" on page 20.
- 5 Remove the memory module(s). See "Removing the Memory Module(s)" on page 22.
- 6 Remove the keyboard. See "Removing the Keyboard" on page 17.
- 7 Remove the palm-rest. See "Removing the Palm-Rest" on page 30.
- 8 Follow the instructions from step 3 to step 7 in "Removing the System Board" on page 39.
- 9 Remove the display assembly. See "Removing the Display Assembly" on page 57.
- 10 Remove the display bezel. See "Removing the Display Bezel" on page 60.
- 11 Remove the display hinges. See "Removing the Display Hinges" on page 63.

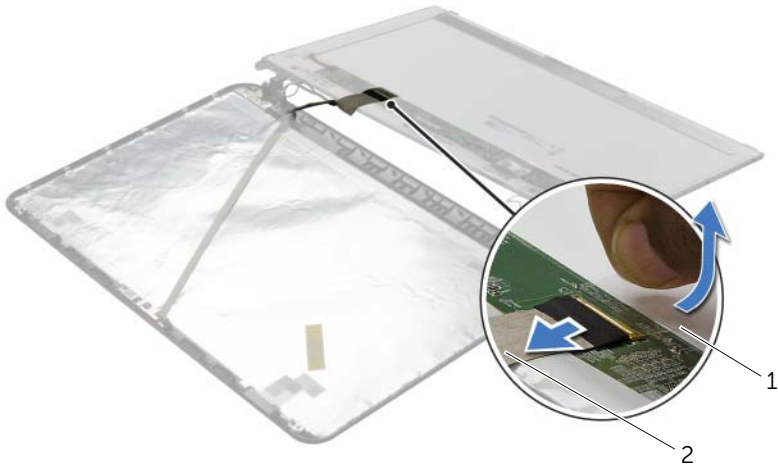
Procedure

- 1 Remove the screws that secure the display panel to the display back-cover.
- 2 Gently lift the display panel and turn it over.



1	display back-cover	2	display panel
3	screws (12)		

- 3 Peel the tape adhered over the display cable.
- 4 Disconnect the display cable from the display-panel cable connector.



1 tape	2 display cable
-----------	--------------------

Replacing the Display Panel



WARNING: Before working inside your computer, read the safety information that shipped with your computer and follow the steps in "Before You Begin" on page 9. After working inside your computer, follow the instructions in "After Working Inside Your Computer" on page 11. For additional safety best practices information, see the Regulatory Compliance Homepage at dell.com/regulatory_compliance.

Procedure

- 1 Connect the display cable to the display-panel connector.
- 2 Adhere the tape that secures the display cable.
- 3 Gently place the display panel on the display back cover and align the screw holes on the display panel with the screw holes on the display back-cover.
- 4 Replace the screws that secure the display panel to the display back-cover.

Postrequisites

- 1 Replace the display hinges. See "Replacing the Display Hinges" on page 65.
- 2 Replace the display bezel. See "Replacing the Display Bezel" on page 62.
- 3 Replace the display assembly. See "Replacing the Display Assembly" on page 59.
- 4 Follow the instructions from step 3 to step 10 in "Replacing the System Board" on page 43.
- 5 Replace the palm-rest. See "Replacing the Palm-Rest" on page 33.
- 6 Replace the keyboard. See "Replacing the Keyboard" on page 19.
- 7 Replace the memory module(s). See "Replacing the Memory Module(s)" on page 23.
- 8 Replace the base cover. See "Replacing the Base Cover" on page 21.
- 9 Follow the instructions from step 3 to step 4 in "Replacing the Optical Drive" on page 16.
- 10 Follow the instructions from step 3 to step 5 in "Replacing the Hard Drive" on page 27.
- 11 Replace the battery. See "Replacing the Battery" on page 13.

Removing the Camera Module



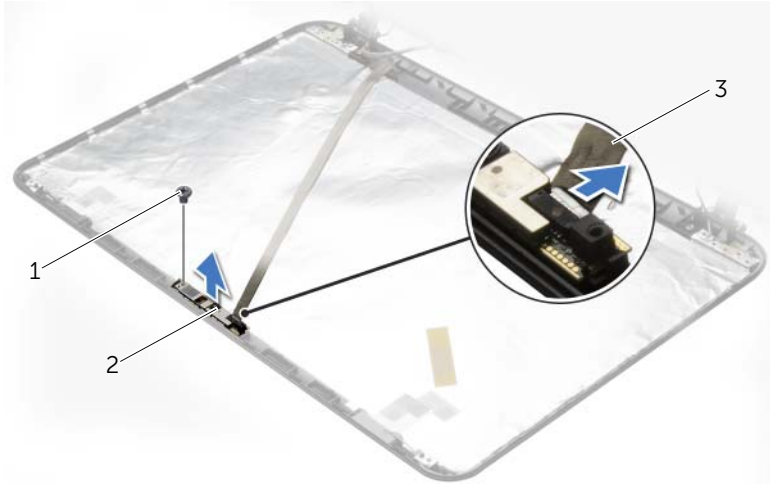
WARNING: Before working inside your computer, read the safety information that shipped with your computer and follow the steps in "Before You Begin" on page 9. After working inside your computer, follow the instructions in "After Working Inside Your Computer" on page 11. For additional safety best practices information, see the Regulatory Compliance Homepage at dell.com/regulatory_compliance.

Prerequisites

- 1 Remove the battery. See "Removing the Battery" on page 12.
- 2 Follow the instructions from step 1 to step 2 in "Removing the Optical Drive" on page 14.
- 3 Follow the instructions from step 1 to step 3 in "Removing the Hard Drive" on page 24.
- 4 Remove the base cover. See "Removing the Base Cover" on page 20.
- 5 Remove the memory module(s). See "Removing the Memory Module(s)" on page 22.
- 6 Remove the keyboard. See "Removing the Keyboard" on page 17.
- 7 Remove the palm-rest. See "Removing the Palm-Rest" on page 30.
- 8 Follow the instructions from step 3 to step 7 in "Removing the System Board" on page 39.
- 9 Remove the display assembly. See "Removing the Display Assembly" on page 57.
- 10 Remove the display bezel. See "Removing the Display Bezel" on page 60.

Procedure

- 1 Disconnect the camera cable from the camera module.
- 2 Remove the screw that secures the camera module to the display back-cover.
- 3 Lift camera module off the display back-cover.



1	screw	2	camera module
3	camera cable		

Replacing the Camera Module



WARNING: Before working inside your computer, read the safety information that shipped with your computer and follow the steps in "Before You Begin" on page 9. After working inside your computer, follow the instructions in "After Working Inside Your Computer" on page 11. For additional safety best practices information, see the Regulatory Compliance Homepage at dell.com/regulatory_compliance.

Procedure

- 1 Use the alignment posts on the display back-cover to place the camera module in position.
- 2 Replace the screw that secures the camera module to the display back-cover.
- 3 Connect the camera cable to the camera-module connector.

Postrequisites

- 1 Replace the display bezel. See "Replacing the Display Bezel" on page 62.
- 2 Replace the display assembly. See "Replacing the Display Assembly" on page 59.
- 3 Follow the instructions from step 3 to step 10 in "Replacing the System Board" on page 43.
- 4 Replace the palm-rest. See "Replacing the Palm-Rest" on page 33.
- 5 Replace the keyboard. See "Replacing the Keyboard" on page 19.
- 6 Replace the memory module(s). See "Replacing the Memory Module(s)" on page 23.
- 7 Replace the base cover. See "Replacing the Base Cover" on page 21.
- 8 Follow the instructions from step 3 to step 4 in "Replacing the Optical Drive" on page 16.
- 9 Follow the instructions from step 3 to step 5 in "Replacing the Hard Drive" on page 27.
- 10 Replace the battery. See "Replacing the Battery" on page 13.

Removing the Power-Adapter Port



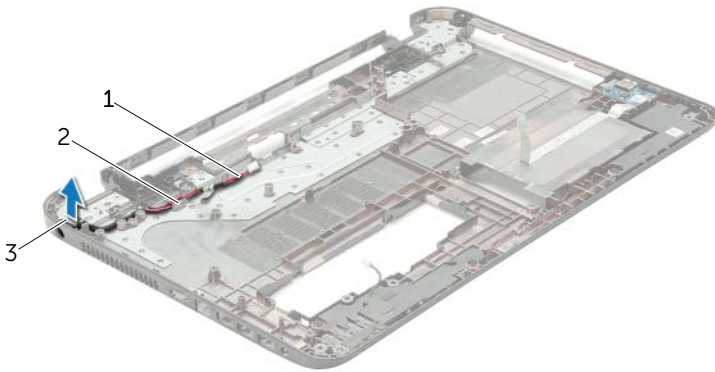
WARNING: Before working inside your computer, read the safety information that shipped with your computer and follow the steps in "Before You Begin" on page 9. After working inside your computer, follow the instructions in "After Working Inside Your Computer" on page 11. For additional safety best practices information, see the Regulatory Compliance Homepage at dell.com/regulatory_compliance.

Prerequisites

- 1 Remove the battery. See "Removing the Battery" on page 12.
- 2 Follow the instructions from step 1 to step 2 in "Removing the Optical Drive" on page 14.
- 3 Follow the instructions from step 1 to step 3 in "Removing the Hard Drive" on page 24.
- 4 Remove the base cover. See "Removing the Base Cover" on page 20.
- 5 Remove the memory module(s). See "Removing the Memory Module(s)" on page 22.
- 6 Remove the keyboard. See "Removing the Keyboard" on page 17.
- 7 Remove the palm-rest. See "Removing the Palm-Rest" on page 30.
- 8 Follow the instructions from step 3 to step 7 in "Removing the System Board" on page 39.
- 9 Remove the display assembly. See "Removing the Display Assembly" on page 57.

Procedure

- 1 Note the routing of the power-adapter-port cable and remove the power-adapter-port cable from the routing guides on the computer base.
- 2 Lift the power-adapter port, along with its cable, off the computer base.



1	power-adapter port cable	2	routing guides
3	power-adapter port		

Replacing the Power-Adapter Port



WARNING: Before working inside your computer, read the safety information that shipped with your computer and follow the steps in "Before You Begin" on page 9. After working inside your computer, follow the instructions in "After Working Inside Your Computer" on page 11. For additional safety best practices information, see the Regulatory Compliance Homepage at dell.com/regulatory_compliance.

Procedure

- 1 Slide the power-adapter port into position.
- 2 Route the power-adapter-port cable through the routing guides on the computer base.

Postrequisites

- 1 Replace the display assembly. See "Replacing the Display Assembly" on page 59.
- 2 Follow the instructions from step 3 to step 10 in "Replacing the System Board" on page 43.
- 3 Replace the palm-rest. See "Replacing the Palm-Rest" on page 33.
- 4 Replace the keyboard. See "Replacing the Keyboard" on page 19.
- 5 Replace the base cover. See "Replacing the Base Cover" on page 21.
- 6 Follow the instructions from step 3 to step 4 in "Replacing the Optical Drive" on page 16.
- 7 Follow the instructions from step 3 to step 5 in "Replacing the Hard Drive" on page 27.
- 8 Replace the battery. See "Replacing the Battery" on page 13.

Flashing the BIOS

The BIOS may require flashing when an update is available or when replacing the system board. To flash the BIOS:

- 1 Turn on the computer.
- 2 Go to **dell.com/support**.
- 3 Click **Start Here** under **Support for Home Users**.
- 4 If you have your computer's Service Tag, type your computer's Service Tag and click **Submit**.

If you do not have your computer's service tag, click **Detect Service Tag** to allow automatic detection of your computer's service tag.



NOTE: If the Service Tag cannot be detected automatically, select your product under the product categories.

- 5 Click **Drivers & Downloads** tab.
- 6 In the **Operating System** drop-down, select the operating system installed on your computer.
- 7 Click **BIOS**.
- 8 Click **Download File** to download the latest version of the BIOS for your computer.
- 9 On the next page, select **Single-file download** and click **Continue**.
- 10 Save the file and once the download is complete, navigate to the folder where you saved the BIOS update file.
- 11 Double-click the BIOS update file icon and follow the instructions on the screen.