

Dell S3220DGF


Dell Display Manager

User's Guide

Model : S3220DGF
Regulatory model : S3220DGFc



 **NOTE:** A NOTE indicates important information that helps you make better use of your computer.

 **CAUTION:** A CAUTION indicates potential damage to hardware or loss of data if instructions are not followed.

 **WARNING:** A WARNING indicates a potential for property damage, personal injury, or death.

Copyright © 2019 Dell Inc. or its subsidiaries. All rights reserved. Dell, EMC, and other trademarks are trademarks of Dell Inc. or its subsidiaries. Other trademarks may be trademarks of their respective owners.

2019 – 09

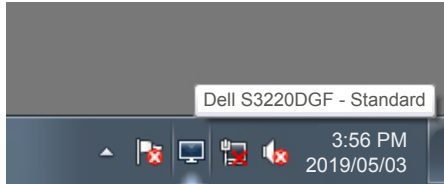
Rev. A00

Contents

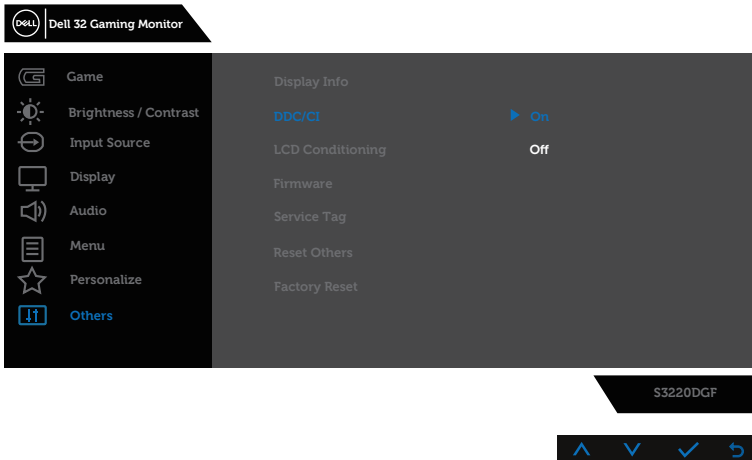
Overview	4
Using The Quick Settings Dialog.....	5
Setting Basic Display Functions.....	7
Assigning Preset Modes To Applications	9
Organizing Windows With Easy Arrange	10
Managing Multiple Video Inputs.....	13
Restoring Application Positions.....	14
Attach DDM To Active Window (Only Window 10)	17
Applying Energy Conservation Features	18
Troubleshooting.....	19

Overview

Dell Display Manager is a Windows application used to manage a monitor or a group of monitors. It enables manual adjustment of the displayed image, assignment of automatic settings, energy management, image rotation and other features on selected Dell models. After installation, Dell Display Manager will run each time the system starts and will place its icon in the notification tray. Information about monitors connected to the system is always available when hovering over the notification tray icon.

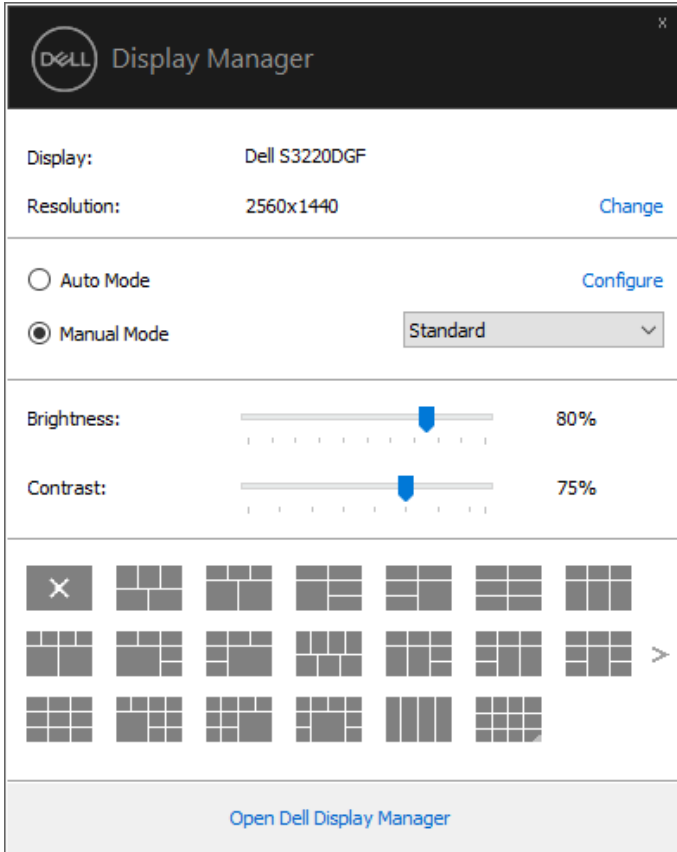


NOTE: Dell Display Manager uses DDC/CI channel to communicate with your monitor. Ensure that DDC/CI is enabled in the menu as below.



Using The Quick Settings Dialog

Clicking Dell Display Manager's notification tray icon opens the **Quick Settings** dialog box. When more than one supported Dell model is connected to the system, a specific target monitor can be selected using the menu provided. The **Quick Settings** dialog box enables convenient adjustment of the monitor's brightness and contrast levels. You can select **Manual Mode** or **Auto Mode**, and the screen resolution can be changed.



The **Quick Settings** dialog box also provides access to Dell Display Manager's advanced user interface which is used to adjust Basic functions, configure Auto Mode and access other features.



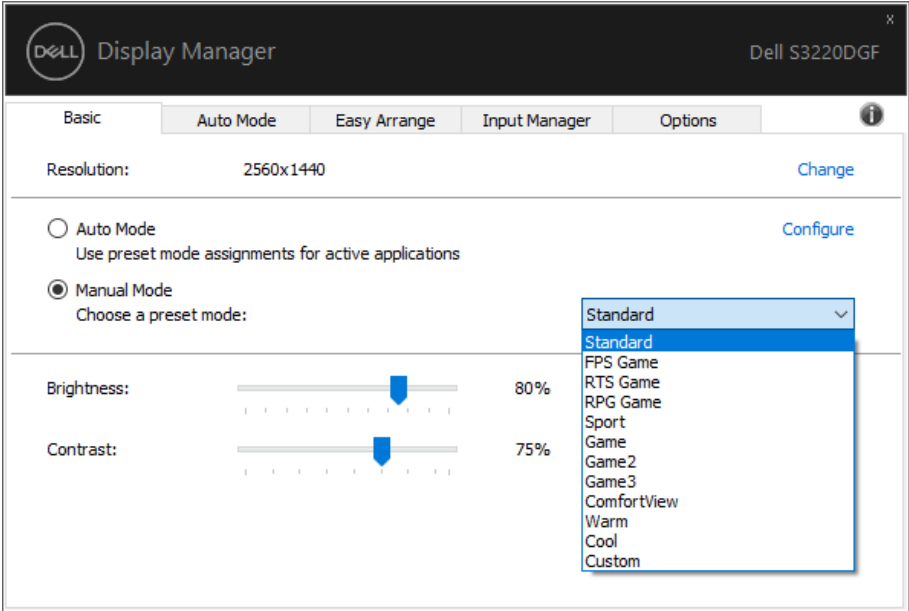
 **NOTE:**

Feature	Function	Description
Quick DDM Access	Quick key to call up DDM UI.	Ctrl+Shift+D Use page up/down key or click on ">" to flip through all Easy Arrange layouts.
	Control individual monitor in multi-monitor setup	From dropdown box to select monitor, selected monitor has Dell logo shown. Move DDM UI to the monitor to be controlled. Press Ctrl+Shift+D to bring up the miniUI under the mouse pointer.



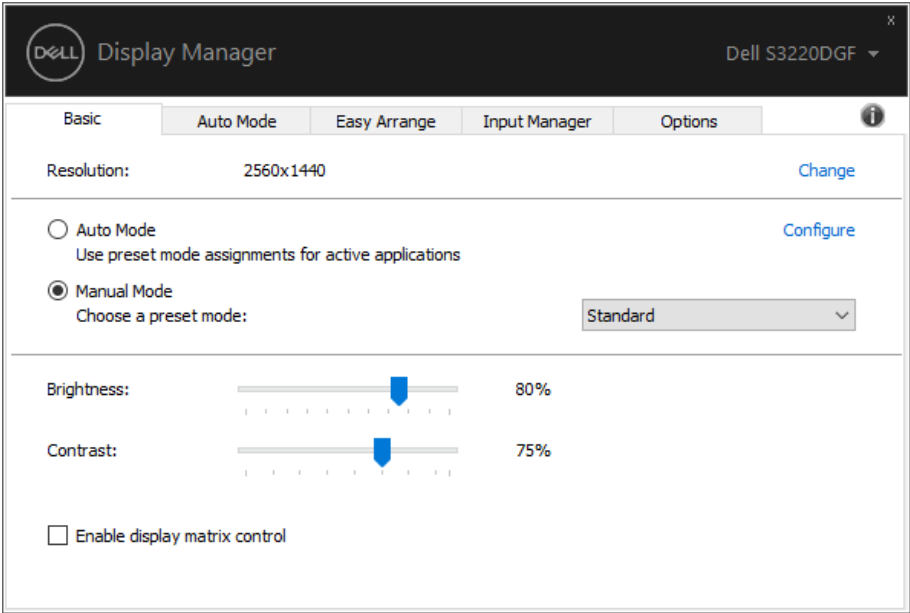
Setting Basic Display Functions

You can select **Manual Mode** that enables you to manually select a preset mode or select **Auto Mode** that applies a preset mode based on the active application. An on-screen message displays the current preset mode whenever it changes. The selected monitor's **Brightness** and **Contrast** can also be directly adjusted from the **Basic** tab.



NOTE: When multiple Dell monitors are connected, select “Enable display matrix control” to apply brightness, contrast and color presets controls to all monitors.





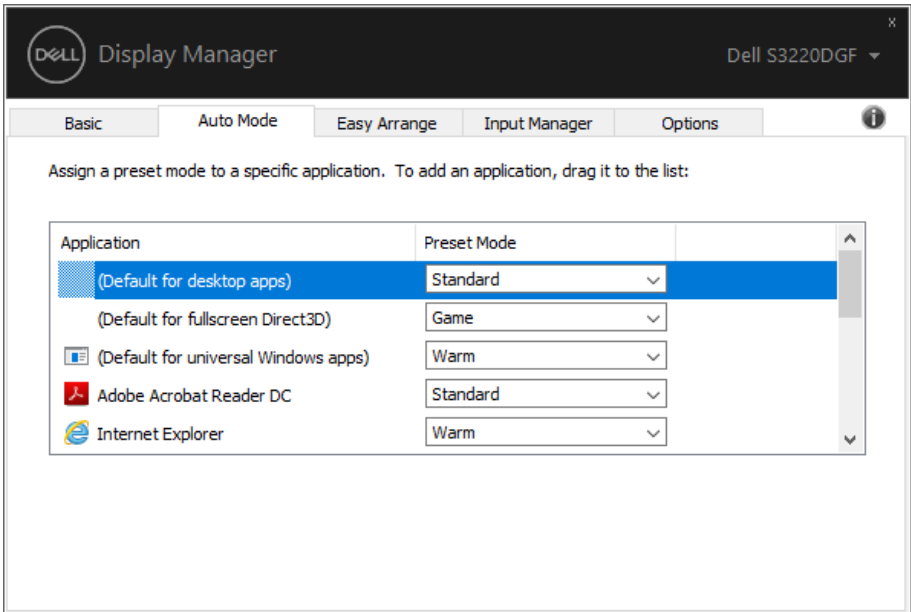
Assigning Preset Modes To Applications

The **Auto Mode** tab enables you to associate a specific Preset Mode with a specific application, and apply it automatically. When **Auto Mode** is enabled, Dell Display Manager will automatically switch to the corresponding **Preset Mode** whenever the associated application is activated. The **Preset Mode** assigned to a particular application may be the same on each connected monitor, or it can vary from one monitor to the next.

Dell Display Manager is pre-configured for many popular applications. To add a new application to the assignment list, simply drag the application from the desktop, Windows Start Menu or elsewhere, and drop it onto the current list.

 **NOTE: Preset Mode assignments for batch files, scripts, loaders, and non-executable files such as zip archives or packed files, are not supported.**

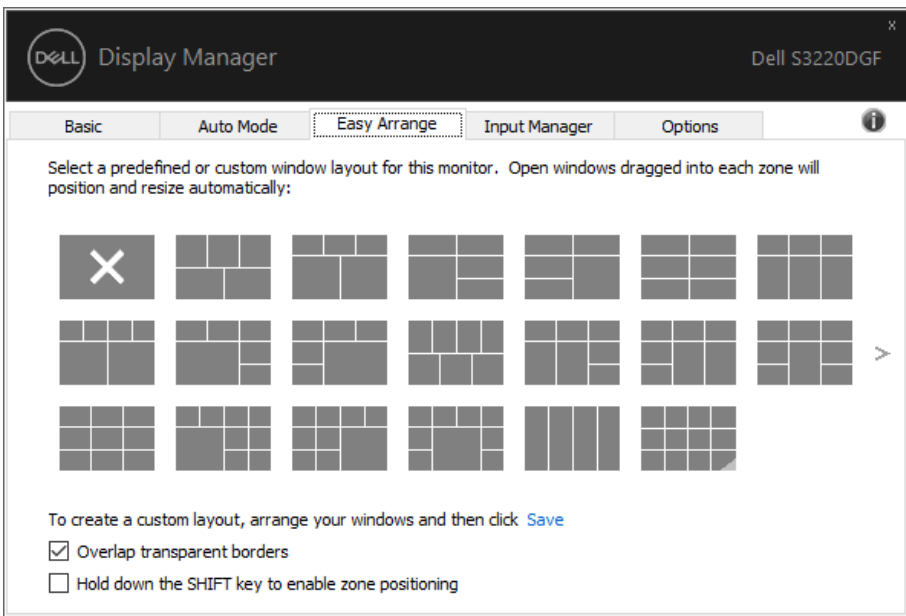
You can also configure the Game preset mode to be used whenever a Direct3D application runs in full-screen mode. To prevent an application from using mode, assign a different preset mode to it.



Organizing Windows With Easy Arrange

On supported Dell monitors, the **Easy Arrange** tab enables you to easily arrange the open windows in one of the predefined layouts by dragging them in the zones. Press “>” or use Page Up/Page Down key to find more layouts. To create a custom layout, arrange the open windows and then click **Save**.

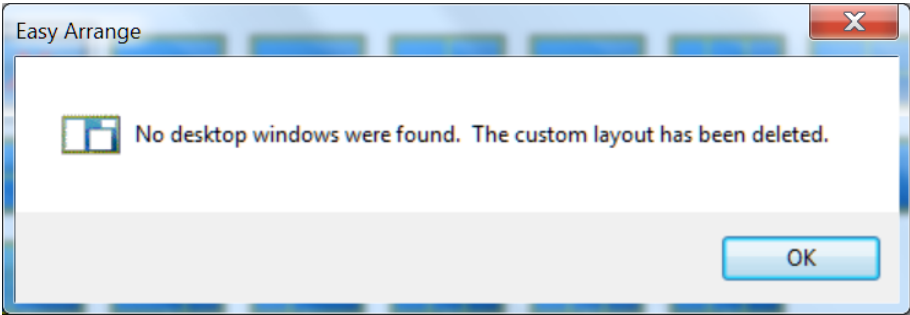
To get started with **Easy Arrange**, choose a target monitor and select one of the predefined layouts. The regions for that layout are displayed momentarily on the monitor. Next, drag an open window across the monitor. While the window is being dragged, the current window layout is displayed and an active region gets highlighted as the window passes over it. At any time, drop the window into the active region to place the window in that region.



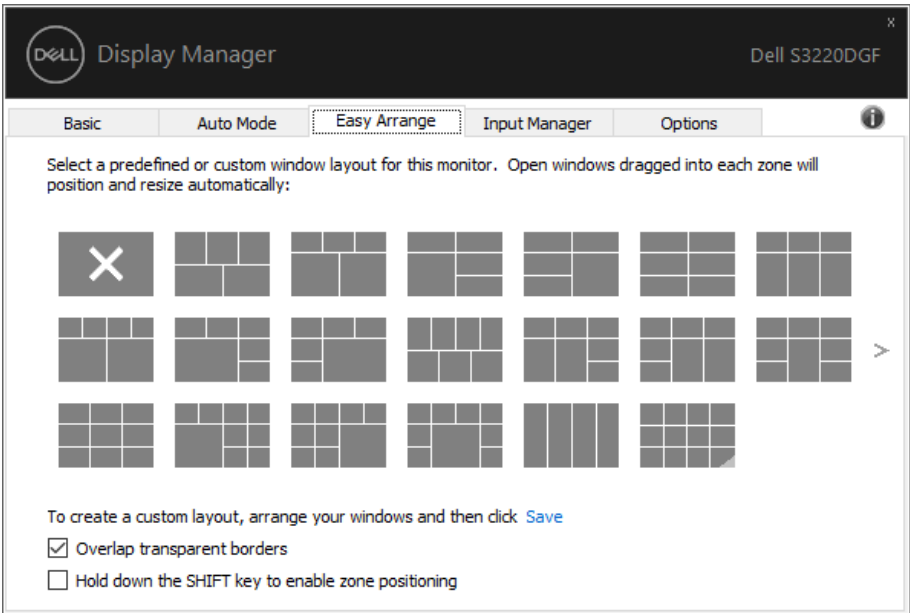
To create a custom window layout, size and position the windows (maximum 10) on the desktop and then click the Save link in **Easy Arrange**. The size and position of the windows is saved as a custom layout and the custom layout icon is created.

NOTE: This option does not save or remember the applications that are open. Only the size and position of the windows is saved.





To use the custom layout, select the custom layout icon. To delete the currently saved custom layout, close all windows on the desktop and then click the Save link in **Easy Arrange**.



There are other advanced ways for the usage of Easy Arrange. Please refer to table below.

Feature	Function	Description
Enhanced Easy Arrange	Custom layouts	Save and name 5 customized Easy Arrange patterns. Configure x*y patterns.
	5 MRU (most-recently-used) layouts	Press Ctrl+Shift+Home to cycle among the last 5 MRU layouts.
	On the fly partition resizing	Hold down Ctrl while resizing current Easy Arrange layout to adjust the size and numbers of cells in a layout. Newly formed Easy Arrange pattern is saved into the Easy Arrange icon position. Hold down Ctrl while clicking on a modified layout icon to restore it to default layout.
	Easy Arrange layouts for portrait mode	Portrait mode Easy Arrange icons are presented when monitor is rotated.

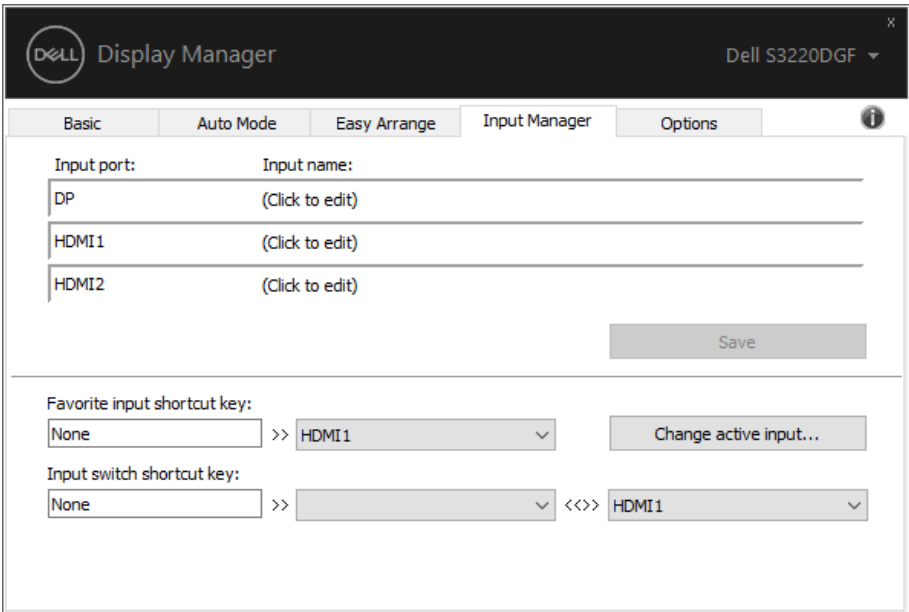


Managing Multiple Video Inputs

The **Input Manager** tab provides convenient ways for you to manage multiple video inputs connected to your Dell monitor. It makes it very easy to switch between inputs while you work with multiple computers.

All video input ports available to your monitor are listed. You can give each input a name as you like. Please save your changes after editing.

You can define a shortcut key to quickly switch to your favorite input and another shortcut key to quickly switch between two inputs if you often work between them.

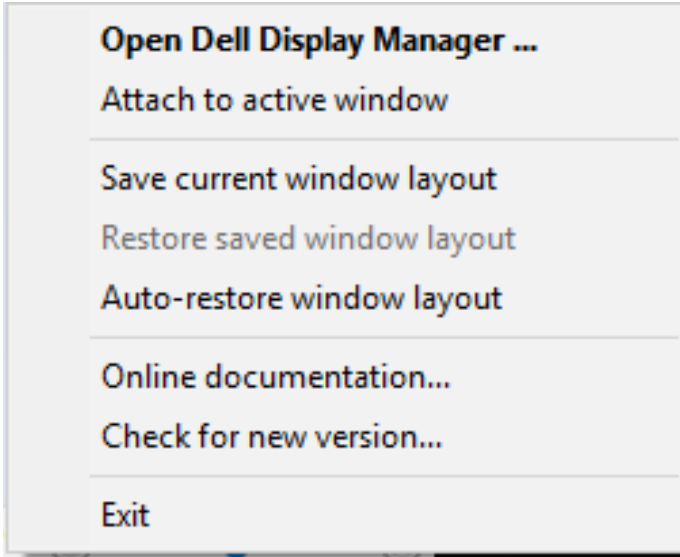


NOTE: DDM communicates with your monitor even when the monitor is displaying video from another computer. You can install DDM on the PC you frequently use and control input switching from it. You may also install DDM on other PCs connected to the monitor.



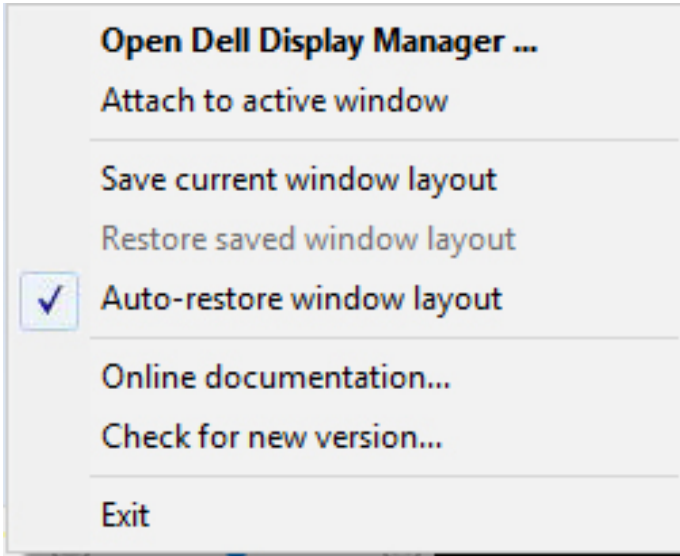
Restoring Application Positions

DDM can help you restore application windows into their positions when you reconnect your computer to the monitor(s). You can quickly access this feature by right-clicking on DDM icon in the notification tray.

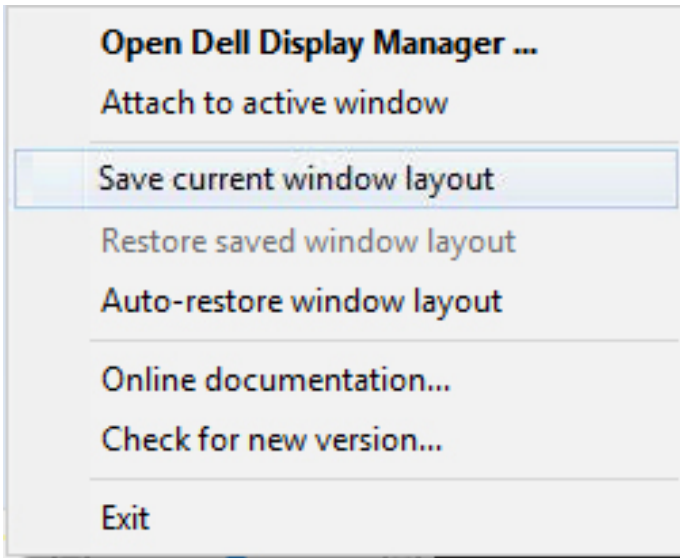


If you choose “**Auto-restore window layout**”, your application windows’ positions are tracked and remembered by DDM. DDM automatically puts the application windows into their original positions when you reconnect your PC to your monitor(s).





If you want to go back to a favorite layout after you have moved the application windows around, you can first **“Save current window layout”** and later **“Restore saved window layout”**.



You may use monitors with different models or resolutions in your daily routine, and you may apply different window layouts on them. DDM is able to know the monitor you have reconnected and restore application positions accordingly. In case you need to replace a monitor in a monitor matrix configuration, you can save the window layout before replacement and restore the layout after a new monitor is installed.



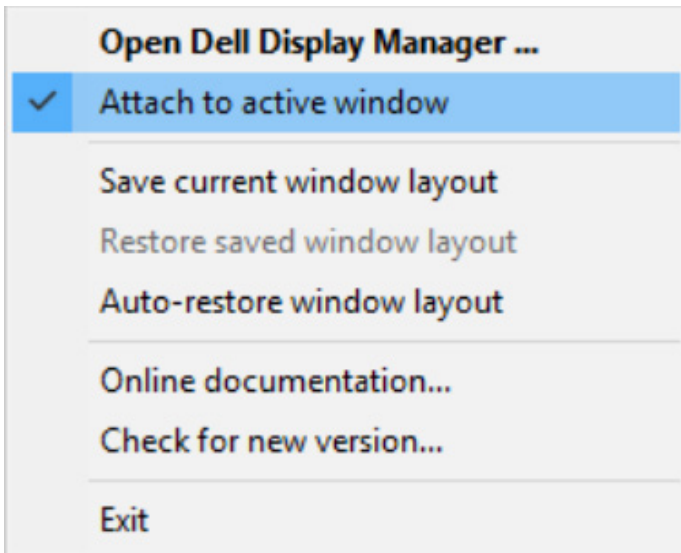
NOTE: You should keep your applications running in order to benefit from this feature. DDM does not launch applications.



Attach DDM To Active Window (Only Window 10)

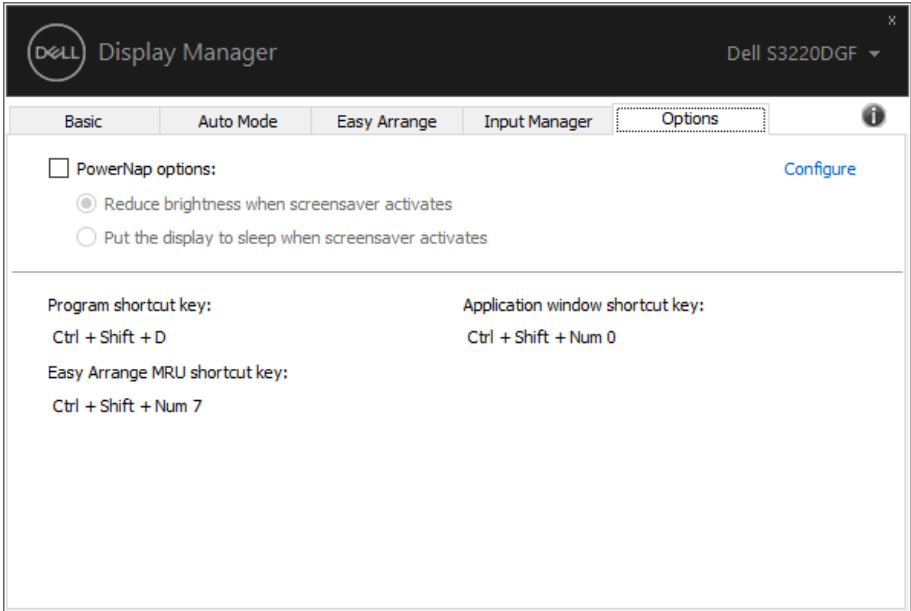
DDM icon can be attached to the active window you are working on. Click on the icon for easy access to below features.

Feature	Function	Description
Attach DDM to Active Window (only Window 10)	Change preset or snap to different partitions	DDM icon attached to active window and user can easily switch window position, change color preset mode, and associate auto preset mode.
	Shortcut key trigger	On a running app window, press Ctrl+Shift+Ins also triggers the attached DDM menu.
	Move app window among Easy Arrange cells	Send the app window to previous/next Easy Arrange cell.
	Move app window among monitors	Send the app window to previous/next monitor.



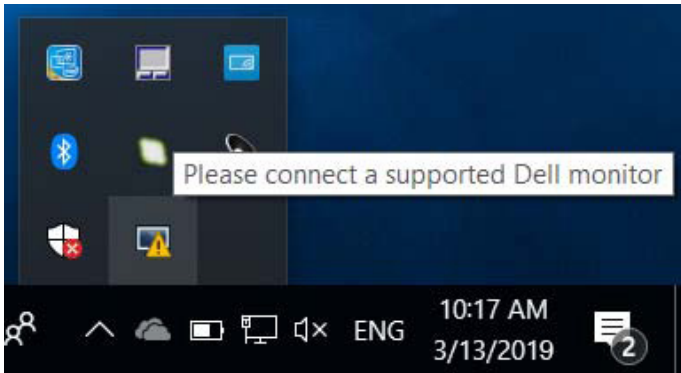
Applying Energy Conservation Features

On supported Dell models, an **Options** tab is available that provides PowerNap energy conservation options. You can choose to set the monitor's brightness to the minimum level, or to put the monitor to sleep when the screensaver is activated.

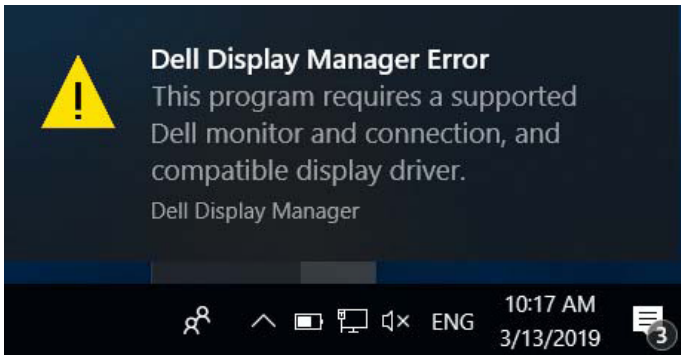


Troubleshooting

If DDM cannot work with your monitor, DDM will show below icon in your notification tray.



Click on the icon, **DDM** shows a more detailed error message.



Please note that DDM only works with Dell branded monitors. If you are using monitors from other manufacturers, DDM doesn't support them.

If DDM is unable to detect and/or communicate with a supported Dell monitor, please take below actions to troubleshoot:

1. Make sure the video cable is properly connected to your monitor and your PC, especially the connectors should be firmly inserted into position.
2. Check the monitor OSD to ensure DDC/CI is enabled.
3. Make sure you have the correct and latest display driver from the graphics vendor (Intel, AMD, Nvidia, etc.). Display driver is often the cause of DDM failure.



4. Remove any docking stations or cable extenders or converters between the monitor and the graphics port. Some low-cost extenders, hubs or converters may not support DDC/CI properly and can fail DDM. Update the driver of such device if the latest version is available.
5. Restart your system.

DDM may not work with below monitors:

- Dell monitor models earlier than year 2013 and D-series of Dell monitors. You can refer to Dell Product Support websites for more information
- Gaming monitors using Nvidia-based G-sync technology
- Virtual and wireless displays do not support DDC/CI
- Some early models of DP 1.2 monitors, it may be necessary to disable MST/DP 1.2 using the monitor OSD

If your PC is connected to the Internet, you will be prompted with a message when a newer version of DDM application is available. It is recommended to download and install the latest DDM application.

You may also check for new version by right clicking on DDM icon while pressing and holding 'shift' key.

