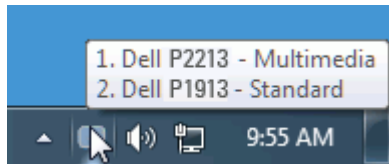


# Dell™ Display Manager User's Guide

- [Overview](#)
  - [Using the Quick Settings Dialog](#)
  - [Setting Basic Display Functions](#)
  - [Assigning Preset Modes to Applications](#)
  - [Applying Energy Conservation Features](#)
  - [Rotating Screen Content](#)
- 

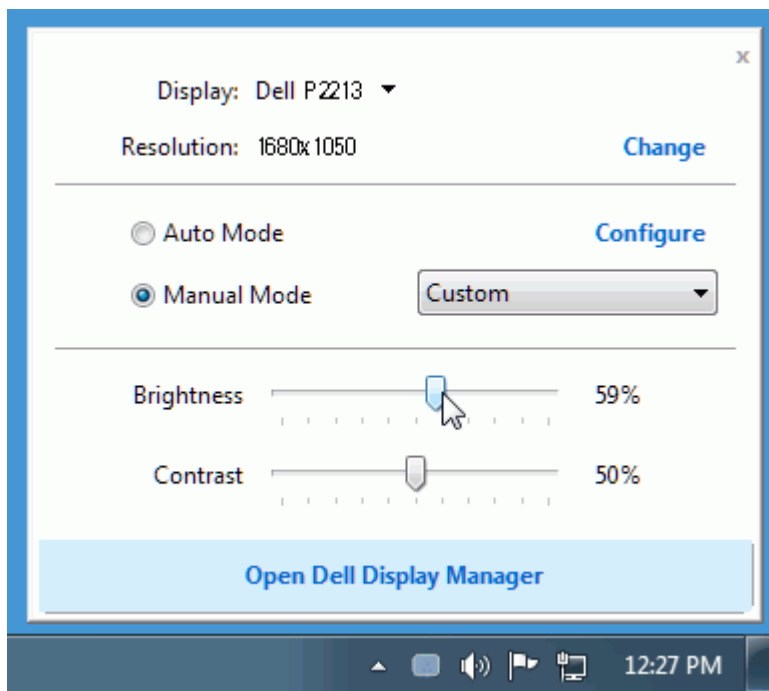
## Overview

Dell Display Manager is a Windows application used to manage a monitor or a group of monitors. It allows manual adjustment of the displayed image, assignment of automatic settings, energy management, image rotation and other features on select Dell models. Once installed, Dell Display Manager will run each time the system starts and will place its icon in the notification tray. Information about monitors connected to the system is always available when hovering over the notification tray icon.



## Using the Quick Settings Dialog

Clicking Dell Display Manager's notification tray icon opens the Quick Settings dialog box. When more than one supported Dell model is connected to the system, a specific target monitor can be selected using the menu provided. The Quick Settings dialog box allows convenient adjustment of the monitor's Brightness and Contrast levels, Preset Modes can be manually selected or set to Auto Mode, and the screen resolution can be changed.



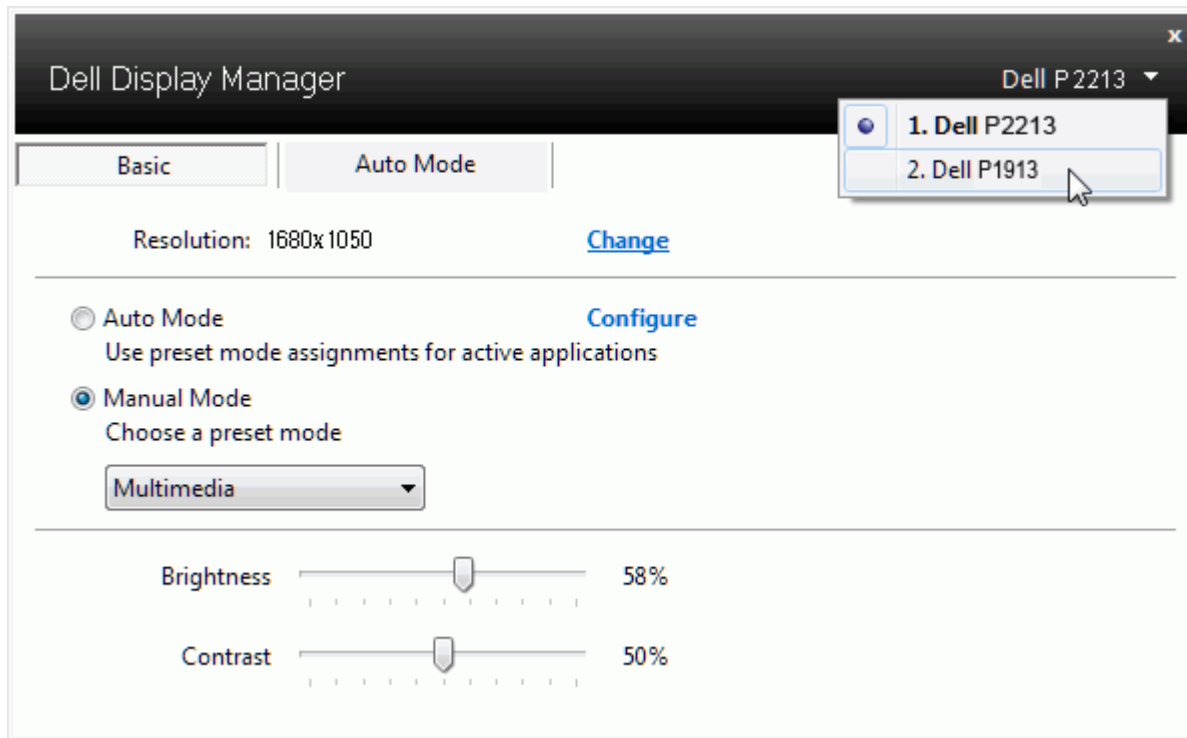
The Quick Settings dialog box also provides access to Dell Display Manager's advanced user interface which is used to adjust Basic functions, configure Auto Mode and access other features.

---

## Setting Basic Display Functions

A Preset Mode for the selected monitor can be manually applied using the menu on the Basic tab. Alternatively, Auto Mode can be enabled. Auto Mode causes your preferred Preset Mode to be applied automatically when specific applications are active. An onscreen message momentarily displays the current Preset Mode whenever it changes.


The selected monitor's Brightness and Contrast can also be directly adjusted from the Basic tab.



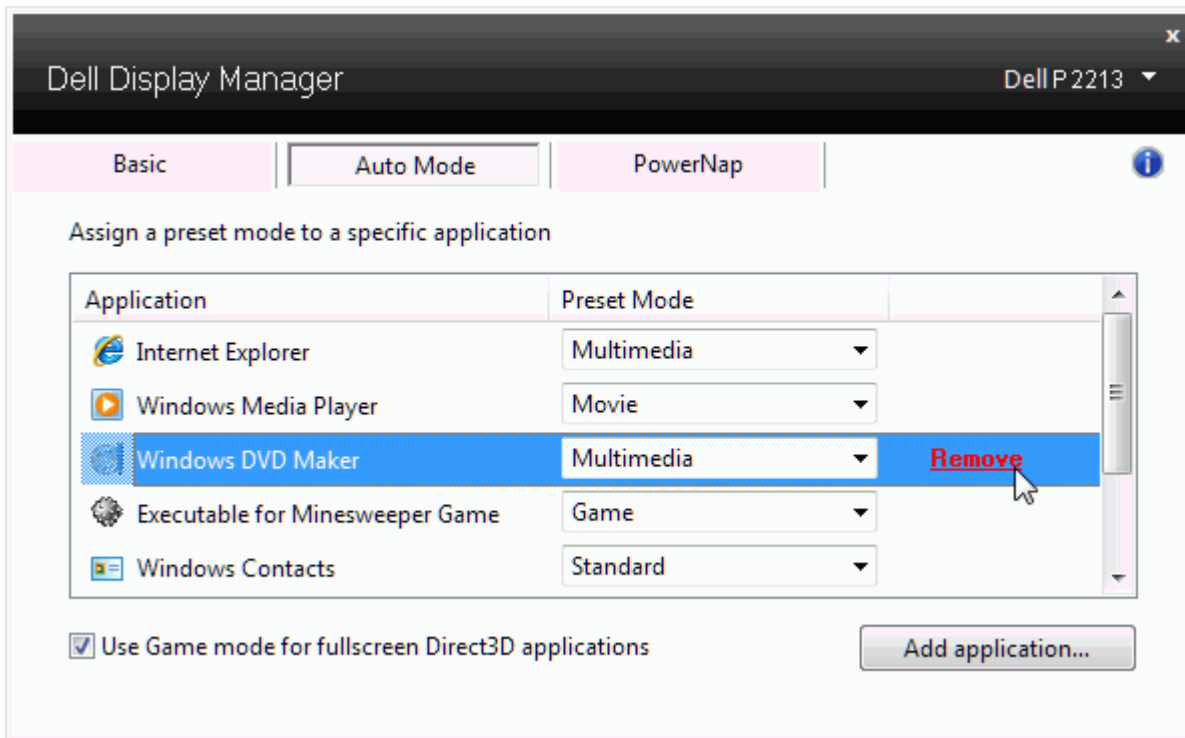
## Assigning Preset Modes to Applications

The Auto Mode tab allows you to associate a specific Preset Mode with a specific application, and apply it automatically. When Auto Mode is enabled, Dell Display Manager will automatically switch to the corresponding Preset Mode whenever the associated application is activated. The Preset Mode assigned to a particular application may be the same on each connected monitor, or it can vary from one monitor to the next.

Dell Display Manager is pre-configured for many popular applications. To add a new application to the assignment list, simply drag the application from the desktop, Windows Start Menu or elsewhere, and drop it onto the current list.

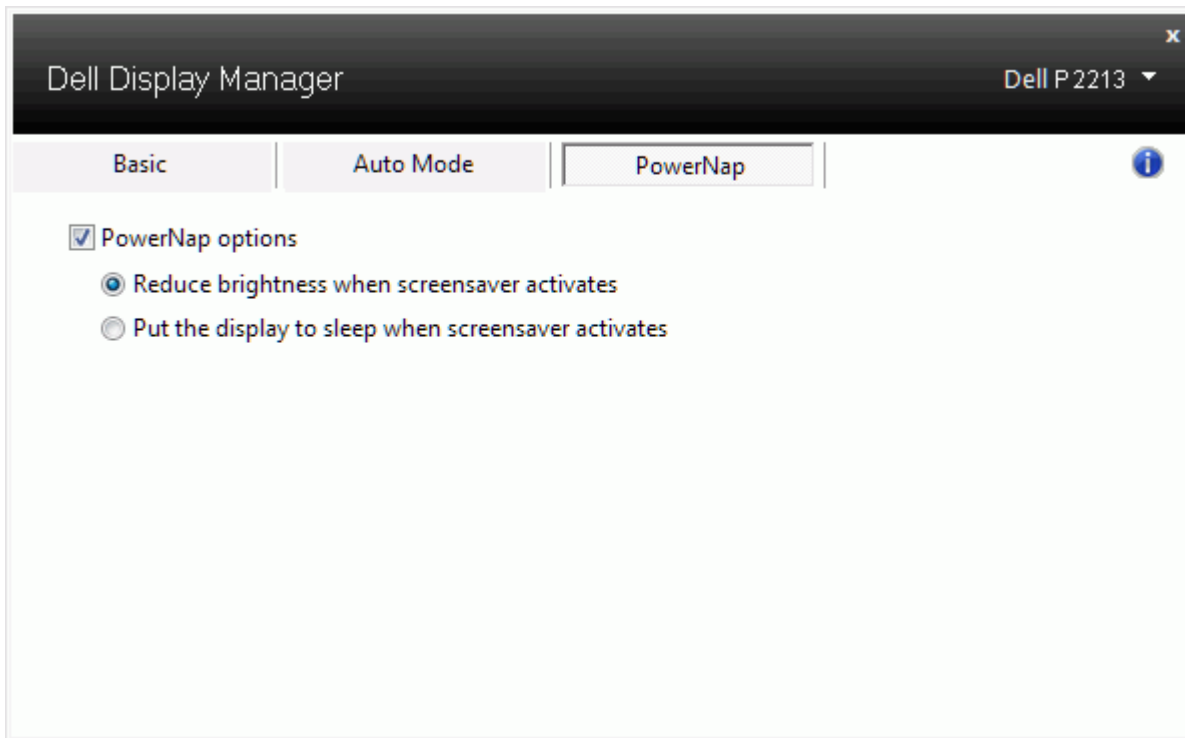
 **NOTE:** Preset Mode assignments targeting batch files, scripts, and loaders, as well as non-executable files such as zip archives or packed files, are not supported and will be ineffective.

In addition an option can be enabled that will cause the "Game" Preset Mode to be used any time a Direct3D application is run fullscreen. To override this behavior, if enabled, with individual game titles, add them to the assignment list with a different Preset Mode. Applications present in the assignment list take priority over the general Direct3D setting.



## Applying Energy Conservation Features

On supported Dell models the PowerNap tab will be available to provide energy conservation options. When the screensaver activates, the monitor's Brightness can automatically be set to minimum level or the monitor can be put to sleep in order to save additional power.




---

## Rotating Screen Content


Some Dell models provide Rotation features. On these monitors the Menu Rotation option under Other Settings in the OSD menu automatically triggers a corresponding change in Windows screen orientation.


 Brightness/Contrast

 Auto Adjust

 Input Source

 Color Settings

 Display Settings

 Other Settings

 Personalize

Language ▶ English

Menu Transparency ▶ 20

Menu Timer ▶ 20 s

Menu Lock ▶ Unlock

**Menu Rotation**

Energy Smart ▶ Off

Power Save Audio ▶ On

DDC/CI ▶ Enable

LCD Conditioning ▶ Disable

Factory Reset      Reset All Settings



Resolution: 1280 x 1024 @ 60Hz

Maximum Resolution: 1680 x 1050 @ 60Hz

