

◀◀ Go to contents page

1 Disassembly Procedures:

S1

Remove 4pcs carton locks, then use a proper tool to open the carton, then uplift and remove the top paper box carefully.



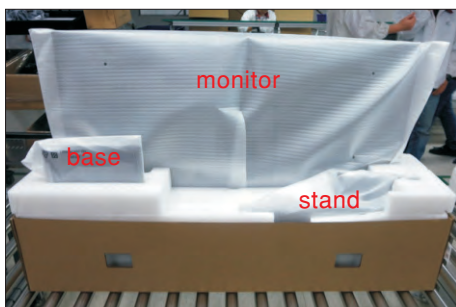
S2

Remove the top cushion foam with all accessories including QSG, Delta-e paper, user's manual, DP cable, HDMI cable, Type-C cable, USB cable, power cable and other packing materials. (Note: It depends on whether users returning the accessories)



S3

Take out the base and stand from bottom cushion foam, then take out the packed monitor from the bottom cushion foam.



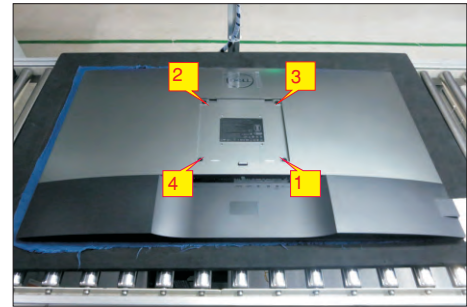
S4

Take out the monitor from EPE-bag and put the LCD monitor on a protective cushion.



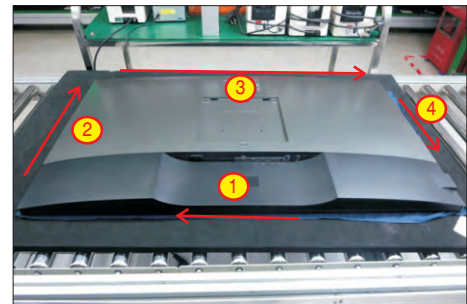
S5

Use a Philips-head screwdriver to remove 4pcs screws for unlocking mechanisms. (No.1~4 screw size=M6x12; Torque=9±0.5kgfcm)



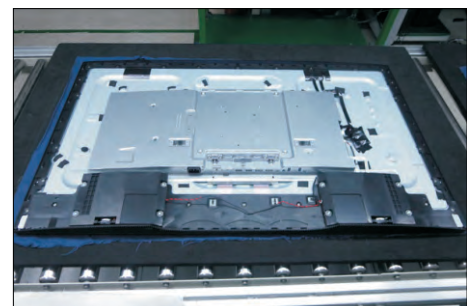
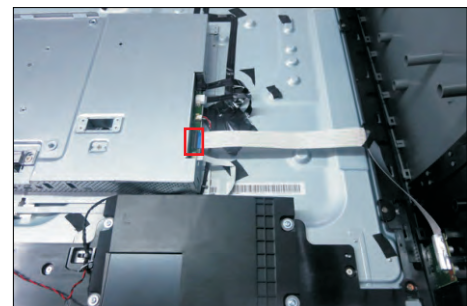
S6

Wedge your fingers between the rear cover and the middle bezel on the corners of the top side of the monitor to release the rear cover, then use one hand to press the middle bezel, the other hand to pull up carefully the rear cover in order of arrow preference for unlocking mechanisms of rear cover.



S7

Lift the rear cover up carefully. Disconnect the USB LVDS cable and function key cable from the connectors of the interface board, and then remove the rear cover.

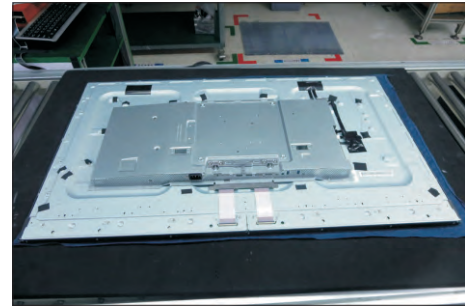
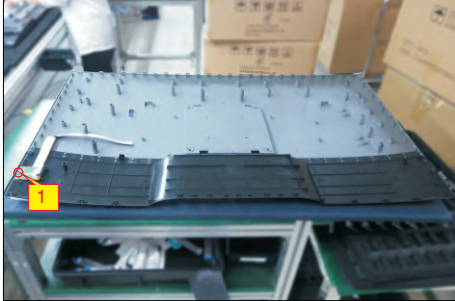


◀◀ Go to contents page

S8

Use a Philips-head screwdriver to remove 1pcs screw for unlocking the USB board unit, then release the USB board unit and put it aside.

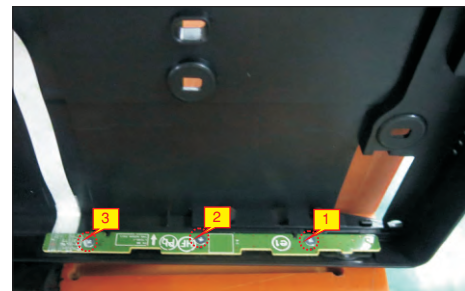
(No.1 screw size=M3x6, Torque=4±0.5kgfcm)



Put the rear cover with function key board into a Jip. Tear off the mylar tape on the function key board, then use a Philips-head screwdriver to tighten 3pcs screws for locking the function key board with the front bezel.

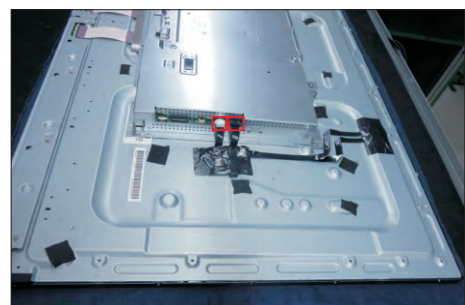
S11

(No.1~3 Screw size= M2x2.4, Torque=0.8±0.2kgfcm)



S12

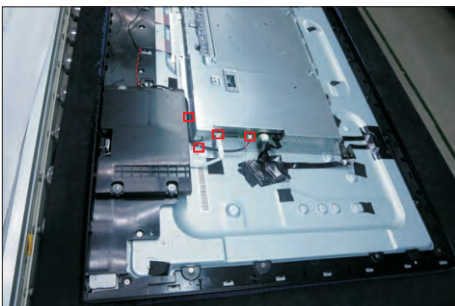
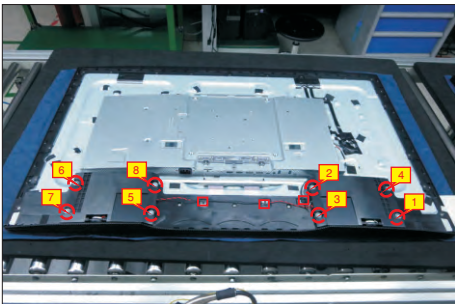
Tear off acetate tape, then disconnect the panel lamp cables from the connectors of the circuit board.



S9

Use a Philips-head screwdriver to remove 8pcs screws for unlocking the speakers with middle bezel. Release the speakers' cables from the hooks of the middle bezel, and then disconnect the speaker cable away from the connector of the circuit board.

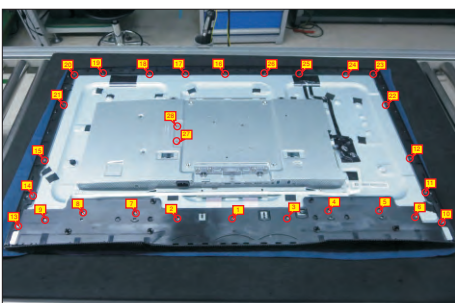
(No.1~8 screw size=M3x8, Torque=5±0.5kgfcm)



S10

Use a Philips-head screwdriver to remove 2pcs screws for unlocking the heat-sink. Use a Philips-head screwdriver to remove 26pcs screws for unlocking the middle bezel, then remove the bezel.

(No.1~28 Screw size= M3x0.5x4, Torque=5±0.5kgfcm)

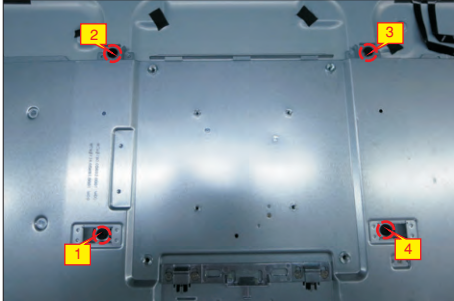


◀◀ [Go to contents page](#)

S13

Use a Philips-head screwdriver to remove 4pcs screws for locking the bracket chassis module with the panel.

(No.1~4 Screw size= M6x12, Torque=9±0.5kgfxcM)



S14

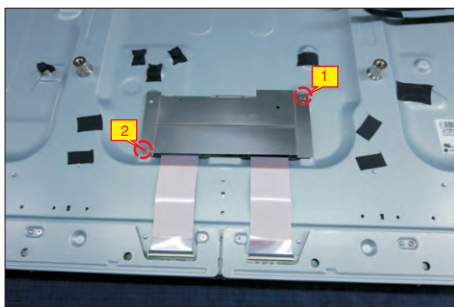
Lift up the bracket chassis, and disconnect the LVDS cable from the connector of the T-CON board of panel module, then put the bracket chassis on a protective cushion.



S15

Use a Philips-head screwdriver to remove 2pcs screws for unlocking the small bracket with T-Con board, then remove the small bracket.

(No.1~2 Screw size= M3x0.5x4, Torque=3~5kgfxcM)



S16

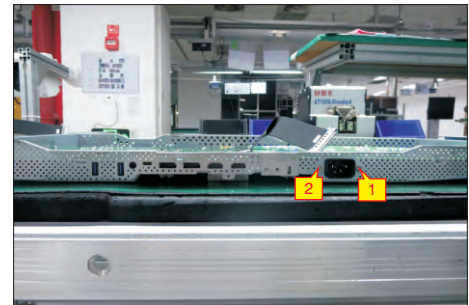
Remove 2pcs shading tape on the left and right side of the panel corner, then remove 32pcs acetate tapes on the specific positions of the back of panel.



S17

Turn over the bracket chassis module. Remove the Mylar from the hooks of the bracket, and then use a Philips-head screwdriver to remove two screws for unlocking AC power outlet.

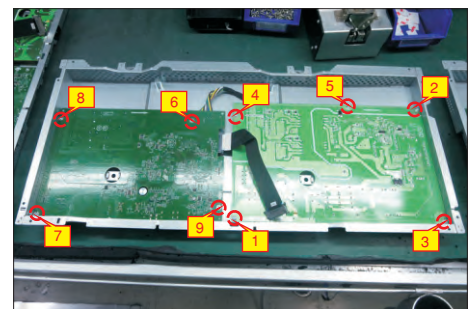
(No.1~2 screw size=M3x10, Torque=6±0.5kgfxcM)



S18

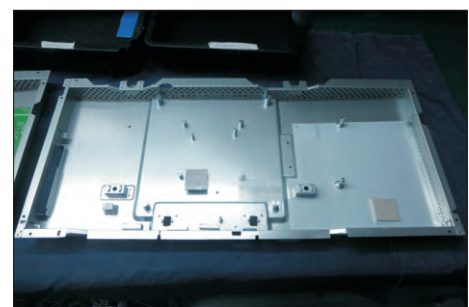
Use a Philips-head screwdriver to remove 9pcs screws for unlocking power board and interface board.

(No.1 screw size=M4x8, Torque=6±0.5kgfxcM;
No.2~6 screw size=M3x7.5, Torque=6±0.5kgfxcM)



S19

Remove the circuit boards from the bracket chassis module carefully, and then disconnect all of the cables.



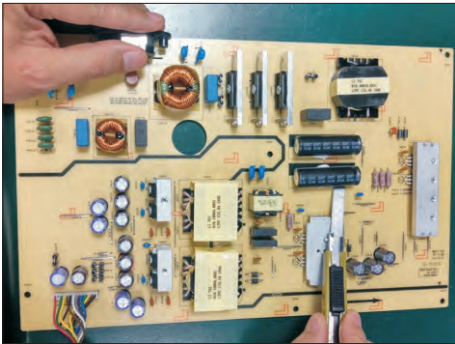
◀◀ [Go to contents page](#)

S20

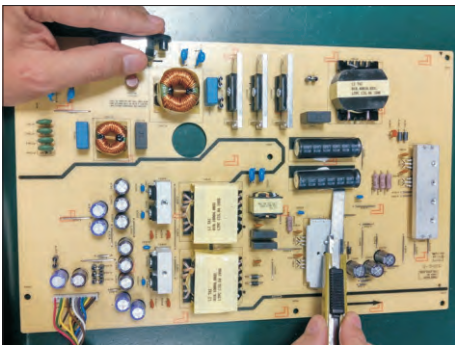
Remove electrolyte capacitors (red mark) from printed circuit boards.



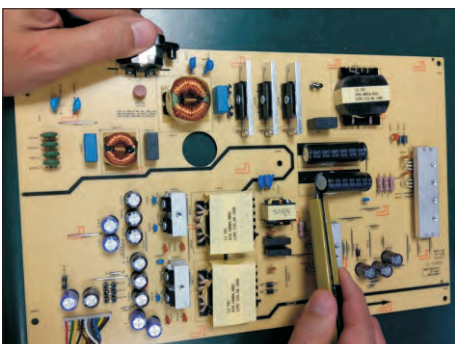
S20-1 Cut the glue between bulk cap. and PCB with a knife.



S20-2 Ensure cutting path within the glue, don't touch bulk cap. or PCB.



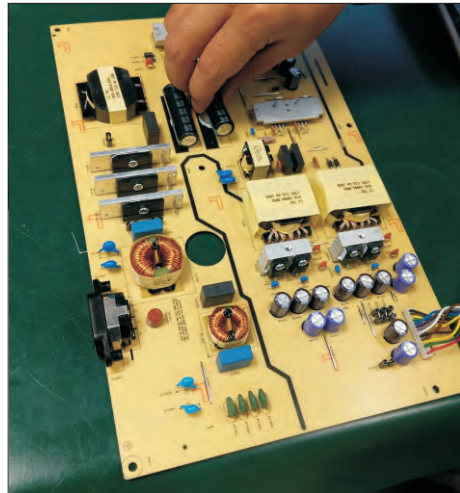
S20-3 Cut into the bottom of bulk cap. and pullit up carefully.



S20-4 Take out bulk cap. pin solder with soldering iron and absorber.



S20-5 Lift the bulk cap. up and away from the PCB.



Product material information

The following substances, preparations, or components should be disposed of or recovered separately from other WEEE in compliance with Article 4 of EU Council Directive 75/442/EEC.

Capacitors / condensers (containing PCB/PCT)	No used
Mercury containing components	No used
Batteries	No used
Printed circuit boards (with a surface greater than 10 square cm)	Product has printed circuit boards (with a surface greater than 10 square cm)
Component contain toner, ink and liquids	No used
Plastic containing BFR	No used
Component and waste contain asbestos	No used
CRT	No used
Component contain CFC, HCFC, HFC and HC	No used
Gas discharge lamps	No used
LCD display > 100 cm ²	Product has an LCD greater than 100 cm ²
External electric cable	Product has external cables
Component contain refractory ceramic fibers	No used
Component contain radio-active substances	No used
Electrolyte capacitors (height > 25mm, diameter > 25mm)	Product has electrolyte capacitors (height > 25mm, diameter > 25mm)

3. Tools Required

List the type and size of the tools that would typically can be used to disassemble the product to a point where components and materials requiring selective treatment can be removed.

Tool Description:

- Screwdriver (Phillip head) #1
- Screwdriver (Phillip head) #2
- Penknife
- Soldering iron and absorber