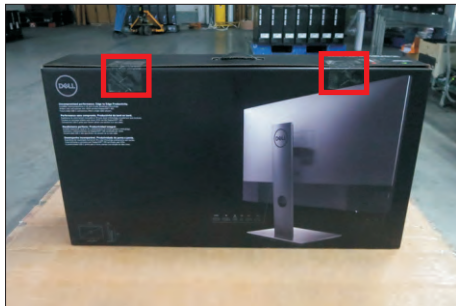


1. Disassembly Procedures:

S1 Open the carton with a proper tool.



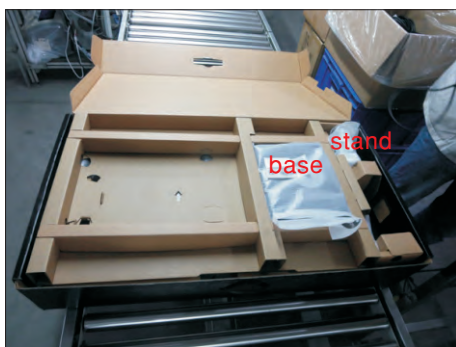
Take out all accessories including UAE label, QSG, Delta-e paper, user's manual, DP cable, USB cable, power cable and other packing materials from the carton. (Note: It depends on whether users returning the accessories)

S2



S3

Take out the base, Paper-Top and stand from the carton, then take out the monitor from the pizza carton.



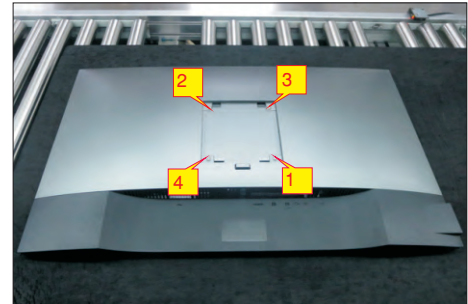
S4

Take out the monitor from EPE-bag and put the LCD monitor on a protective cushion.



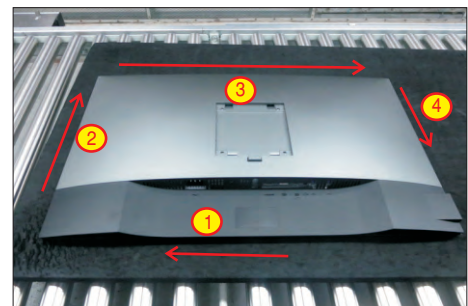
S5

Use a Philips-head screwdriver to remove four screws for unlocking mechanisms. (No.1~4 screw size=M4x11; Torque=11±1kgfxcM)



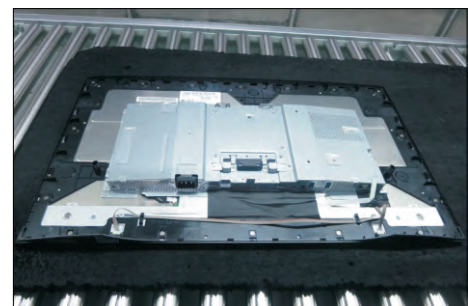
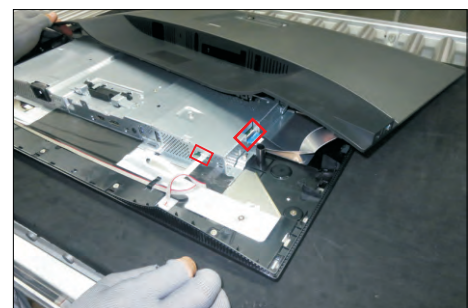
Wedge your fingers between the rear cover and the middle bezel on the corners of the top side of the monitor to release the rear cover, then use one hand to press the middle bezel, the other hand to pull up carefully the rear cover in order of arrow preference for unlocking mechanisms of rear cover.

S6



Lift the rear cover up carefully. Disconnect the USB LVDS cable and function key cable from the connectors of the interface board, and then remove the rear cover.

S7

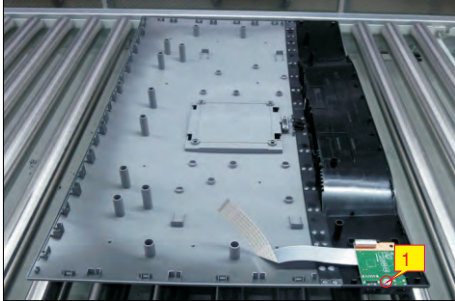


◀◀ Go to contents page

S8

Use a Philips-head screwdriver to remove 1pcs screw for unlocking the USB board unit, then release the USB board unit and put it aside.

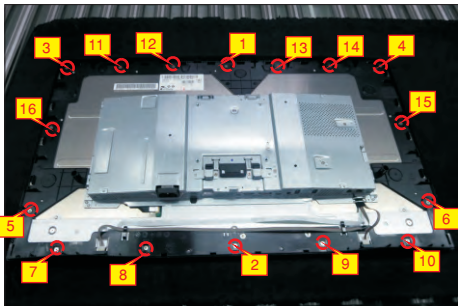
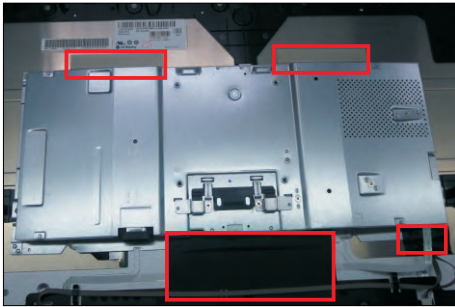
(No.1 screw size=M3x6, Torque=4±0.5kgfxcM)



S9

Tear off 4pcs aluminum foil for releasing the bracket. Use a Philips-head screwdriver to release 12 screws for unlocking the middle bezel away from the assembled unit.

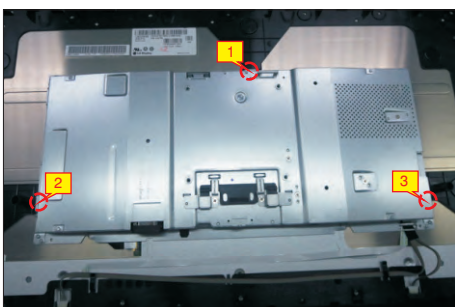
(No.1~12 screw size=M3x4, Torque=3~4kgfxcM)



S10

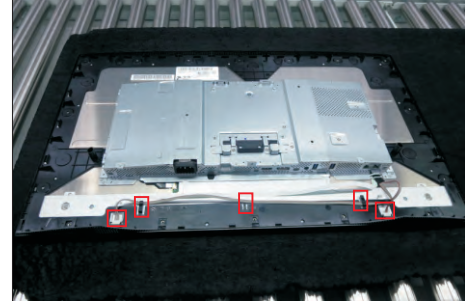
Use a Philips-head screwdriver to remove four screws for unlocking the bracket chassis module with the panel module.

(No.1~4 Screw size= M3x0.5x4, Torque=3~4kgfxcM)



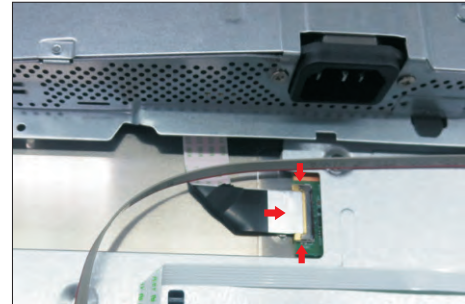
S11

Disconnect the panel power cable from the two connector of the panel module, then release the panel power cables from the hooks of the middle bezel.



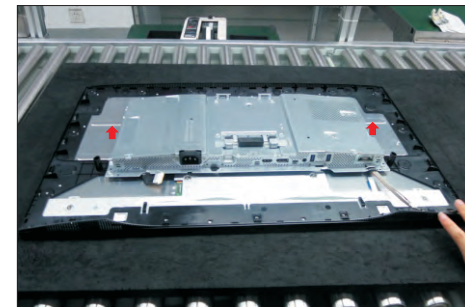
S12

Move up the bracket, then push the earing-lock and disconnect the EDP cable away from the connector of the panel module.



S13

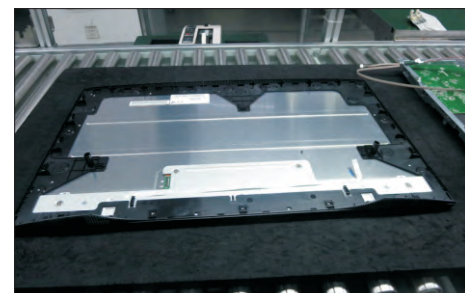
Remove the bracket chassis module and then put the bracket on a protector cushion.



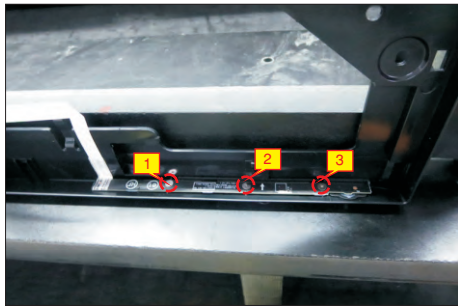
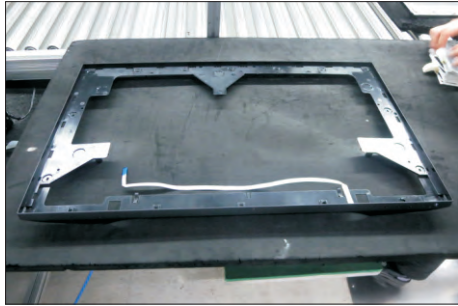
S14

Tear off the adhesive tape for releasing the function key cable, and then remove the middle bezel with the function key board. Tear off the mylar tape, then use a Philips-head screwdriver to remove 3pcs screws for unlocking the function key board.

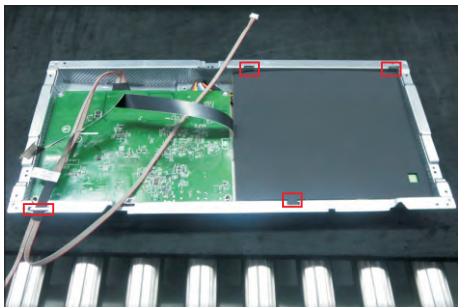
(No.1~3 screw size=M2x2.4, Torque=0.8~1kgfxcM)



◀◀ [Go to contents page](#)



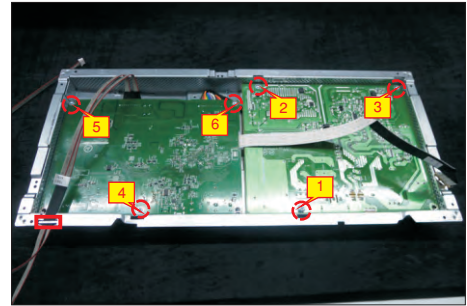
**S15** Turn over the bracket chassis module. Remove the Mylar tape from the hooks of the bracket.



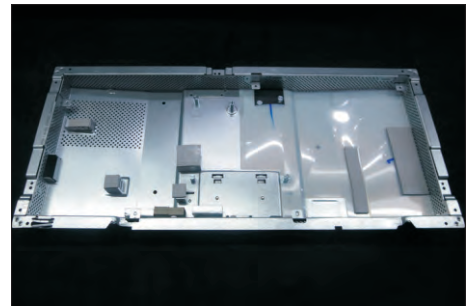
**S16** Use a Philips-head screwdriver to remove two screws for unlocking the AC power outlet.  
(No.1~2 screw size=M3x8, Torque=7±1kgfxcM)



**S17** Remove the panel lamp cable from the hook of the bracket. Use a Philips-head screwdriver to remove 6pcs screws for interface board and power board.  
(No.1 screw size=M4x8, Torque=7±1kgfxcM;  
No.2~6 screw size=M3x7.5, Torque=7±1kgfxcM)



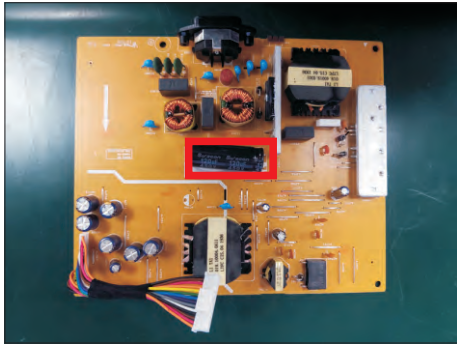
**S18** Remove the power board board and interface board from the bracket chassis module carefully, and then disconnect all of the cables.



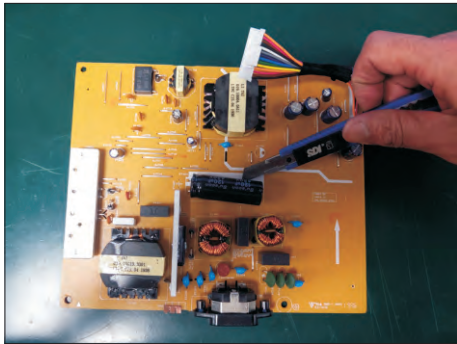
◀◀ [Go to contents page](#)

S19

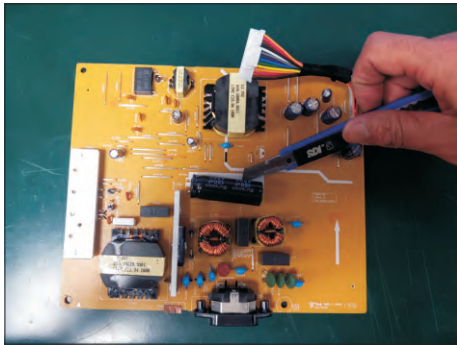
Remove electrolyte capacitors (red mark) from printed circuit boards.



S19-1 Cut the glue between bulk cap. and PCB with a knife.



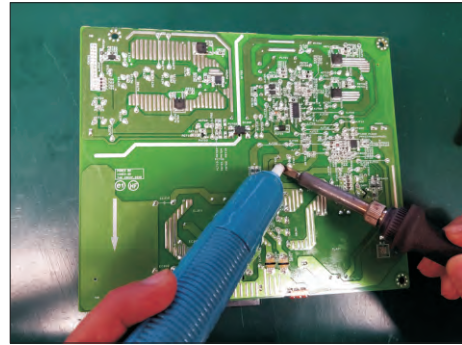
S19-2 Ensure cutting path within the glue, don't touch bulk cap. or PCB.



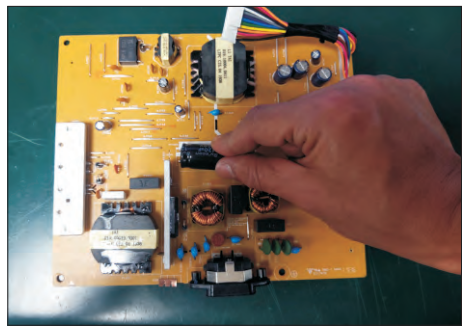
S19-3 Cut into the bottom of bulk cap. and pull it up carefully.



S19-4 Take out bulk cap. pin solder with soldering iron and absorber.



S19-5 Lift the bulk cap. up and away from the PCB.



## 2. Product material information

The following substances, preparations, or components should be disposed of or recovered separately from other WEEE in compliance with Article 4 of EU Council Directive 75/442/EEC.

Capacitors / condensers (containing PCB/PCT)	No used
Mercury containing components	No used
Batteries	No used
Printed circuit boards (with a surface greater than 10 square cm)	Product has printed circuit boards (with a surface greater than 10 square cm)
Component contain toner, ink and liquids	No used
Plastic containing BFR	No used
Component and waste contain asbestos	No used
CRT	No used
Component contain CFC, HCFC, HFC and HC	No used
Gas discharge lamps	No used
LCD display > 100 cm <sup>2</sup>	Product has an LCD greater than 100 cm <sup>2</sup>
External electric cable	Product has external cables
Component contain refractory ceramic fibers	No used
Component contain radio-active substances	No used
Electrolyte capacitors (height > 25mm, diameter > 25mm)	Product has electrolyte capacitors (height > 25mm, diameter > 25mm)

## 3. Tools Required

List the type and size of the tools that would typically can be used to disassemble the product to a point where components and materials requiring selective treatment can be removed.

Tool Description:

- Screwdriver (Phillip head) #1
- Screwdriver (Phillip head) #2
- Penknife
- Soldering iron and absorber