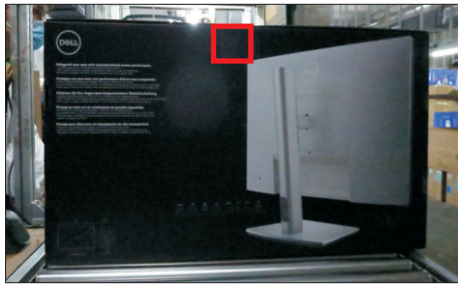


1. Disassembly Procedures:

S1 Open the carton with a proper tool.



Take out all accessories including label(optional), QSG, Delta-E paper, DP cable, USB C to C cable(Type-C cable), USB A to C cable(USB cable), power cable and other packing materials from the carton. (Note: It depends on whether users returning the accessories)

S2



S3

Take out the base and molded plug from the carton, then take out the monitor and stand from the carton.



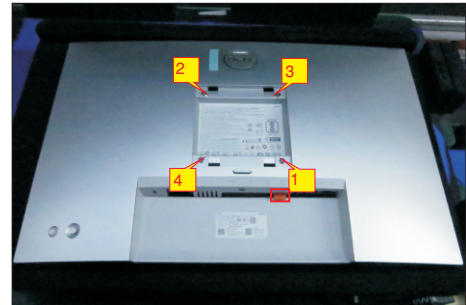
S4

Take out the monitor from EPE-bag and put the LCD monitor on a protective cushion.



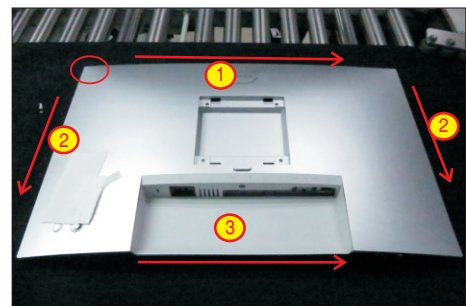
S5

Use a Philips-head screwdriver to remove 4pcs screws for unlocking mechanisms. Remove DP cap. (No.1~4 screw size=M4x11; Torque=11±1kgfxcm)



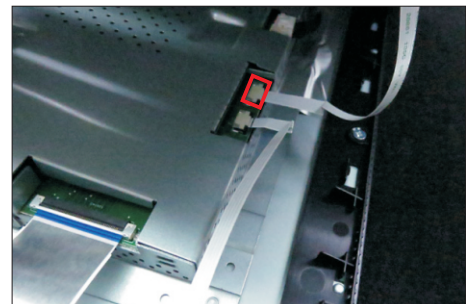
Wedge your fingers between rear cover and the middle bezel on the corners of the top side of the monitor to release the rear cover, then use one hand to press the middle bezel, the other hand to pull up carefully the rear cover in order of arrow preference for unlocking mechanisms of rear cover.

S6



Lift the rear cover up carefully. Disconnect the joystick key cable from the connector of the interface board, and then remove the rear cover and put it aside for later disassembling.

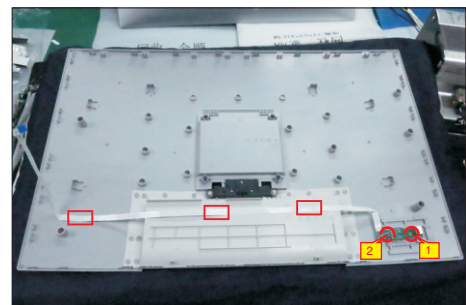
S7



Use a Philips-head screwdriver to remove 2pcs screw for unlocking the key board, then tear off the tapes and release the key board.

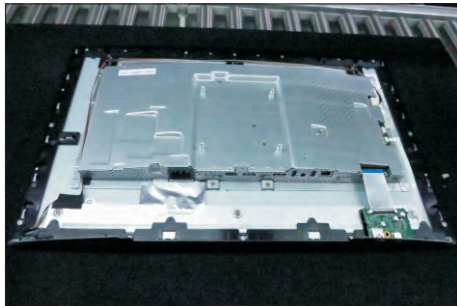
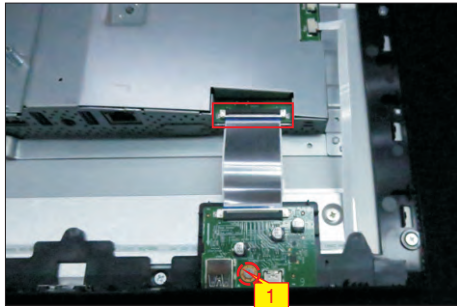
S8

(No.1~2 screw size=M2x2.4, Torque=0.8~1kgfxcm)



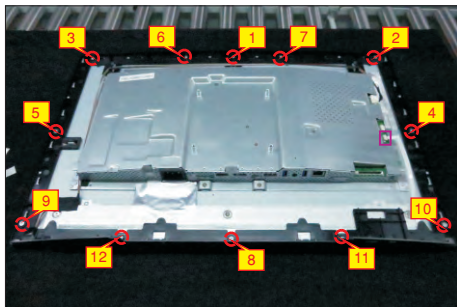
S9

Use a Philips-head screwdriver to release 1 screws for unlocking the USB board, then disconnect the USB FFC cable away from the connector of the interface board and remove the Usb board unit.
(No.1screw size=M3x6, Torque=4±0.5kgfxcM)



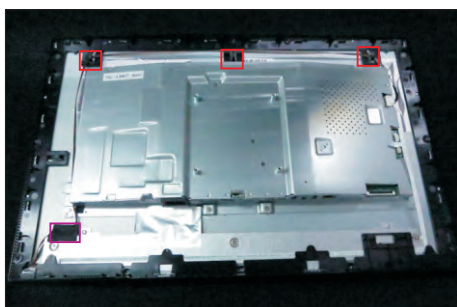
S10

Disconnect the LED cable from the connector of the interface board. Use a Philips-head screwdriver to remove 12pcs screws for unlocking the middle bezel with front bezel.
(No.1~4 screw size=M3x5, Torque=5±0.5kgfxcM)



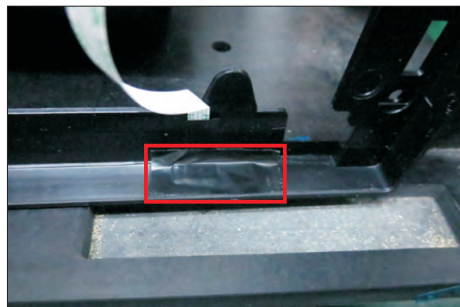
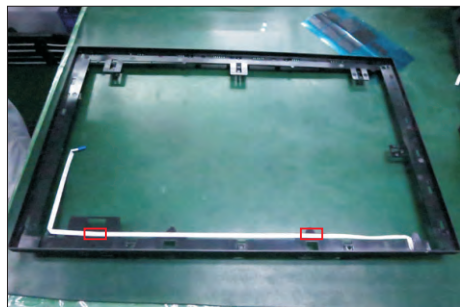
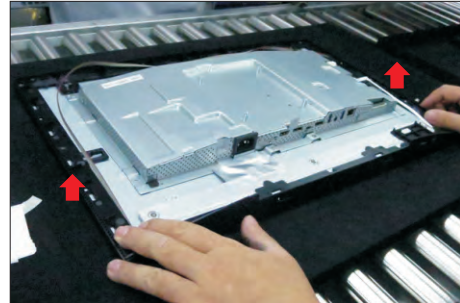
S11

Tear off 1pcs mylar tape for unfixing the panel lamp cable, then release the panel lamp cable from the hooks of the middle bezel.



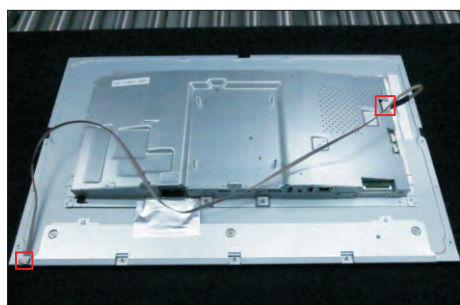
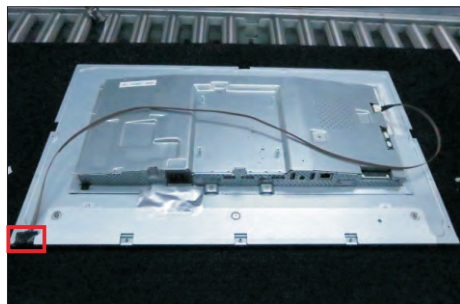
S12

Lift up and take away the middle bezel, then put it on a cushion foam. Tear off the tape on the back of middle bezel for releasing the LED cable, then tear off the mylar tape for releasing the LED board.



S13

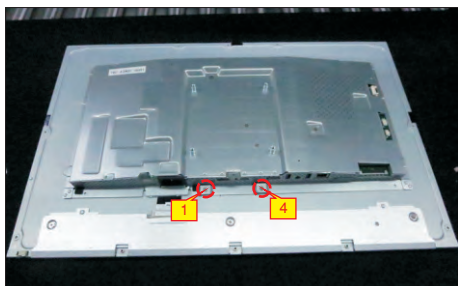
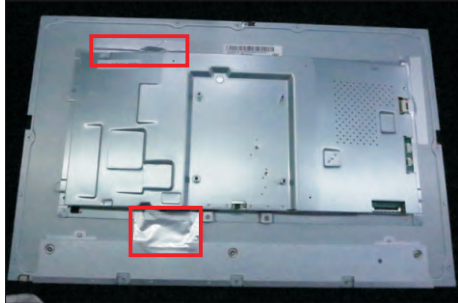
Tear off 1pcs conductive tape for uncovering the panel lamp connector, then disconnect the panel lamp cable from the panel and board.



S15

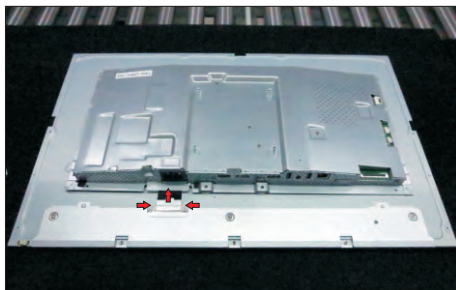
Tear off 2pcs aluminum foil, and then use a Philips-head screwdriver to remove 2pcs screws for unlocking the bracket with panel module.

(No.1~2 screw size=M3x4, Torque=5±0.5kgfxcM)



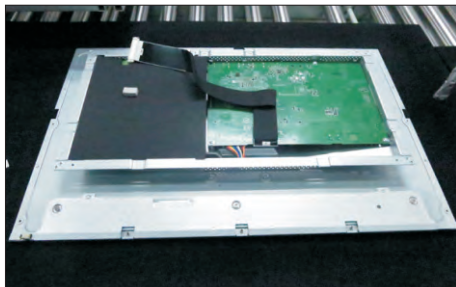
S16

Move up the bracket, then push the earing-lock and disconnect the LVDS cable away from the connectors of the panel module.



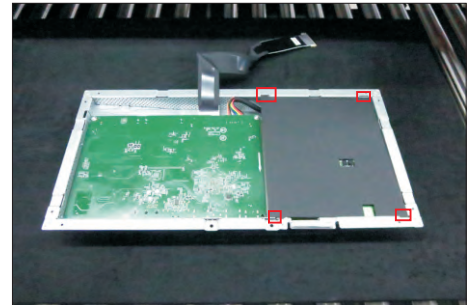
S17

Take away the bracket chassis module and then put the bracket chassis module on a protective cushion.



S18

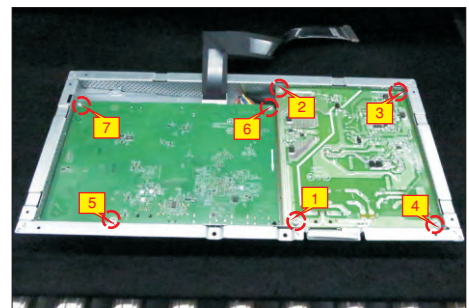
Remove the Mylar tape from the hooks of the bracket.



S19

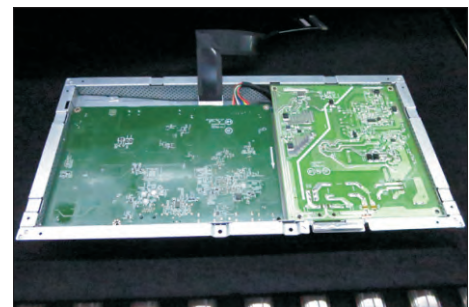
Use a Philips-head screwdriver to remove 7pcs screws for interface board and power board.

(No.1 screw size=M4x8, Torque=7±1kgfxcM;
No.2~7 screw size=M3x7.5, Torque=7±1kgfxcM)



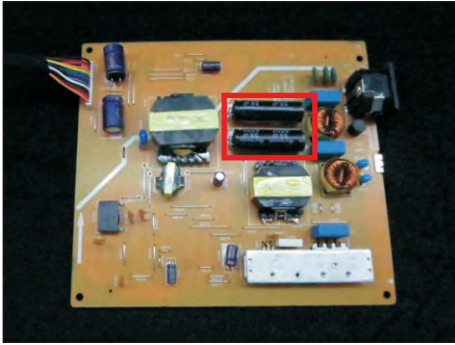
S20

Remove the power board board and interface board from the bracket chassis module carefully, and then disconnect all of the cables.

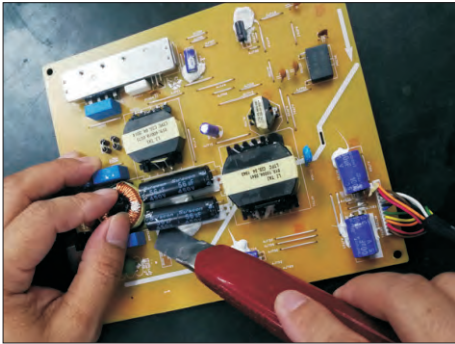


S20

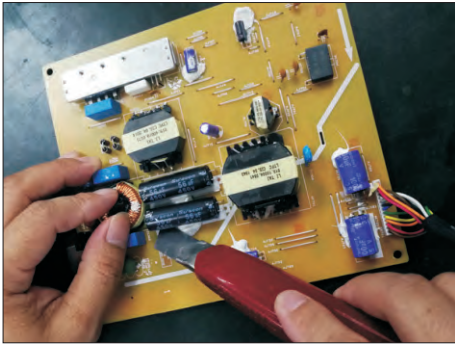
Remove electrolyte capacitors (red mark) from printed circuit boards.



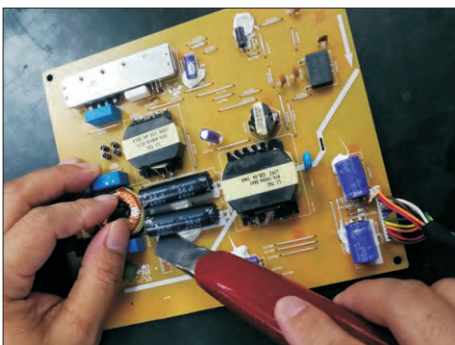
S20-1 Cut the glue between bulk cap. and PCB with a knife.



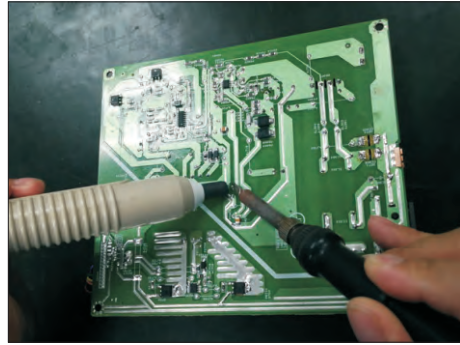
S20-2 Ensure cutting path within the glue, don't touch bulk cap. or PCB.



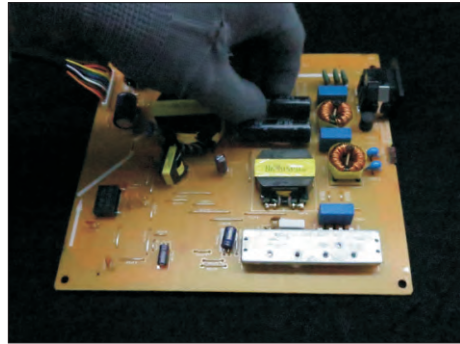
S20-3 Cut into the bottom of bulk cap. and pullit up carefully.



S20-4 Take out bulk cap. pin solder with soldering iron and absorber.



S20-5 Lift the bulk cap. up and away from the PCB.



2. Product material information

The following substances, preparations, or components should be disposed of or recovered separately from other WEEE in compliance with Article 4 of EU Council Directive 75/442/EEC.

Capacitors / condensers (containing PCB/PCT)	No used
Mercury containing components	No used
Batteries	No used
Printed circuit boards (with a surface greater than 10 square cm)	Product has printed circuit boards (with a surface greater than 10 square cm)
Component contain toner, ink and liquids	No used
Plastic containing BFR	No used
Component and waste contain asbestos	No used
CRT	No used
Component contain CFC, HCFC, HFC and HC	No used
Gas discharge lamps	No used
LCD display > 100 cm ²	Product has an LCD greater than 100 cm ²
External electric cable	Product has external cables
Component contain refractory ceramic fibers	No used
Component contain radio-active substances	No used
Electrolyte capacitors (height > 25mm, diameter > 25mm)	Product has electrolyte capacitors (height > 25mm, diameter > 25mm)

3. Tools Required

List the type and size of the tools that would typically can be used to disassemble the product to a point where components and materials requiring selective treatment can be removed.

Tool Description:

- Screwdriver (Phillip head) #1
- Screwdriver (Phillip head) #2
- Penknife
- Soldering iron and absorber