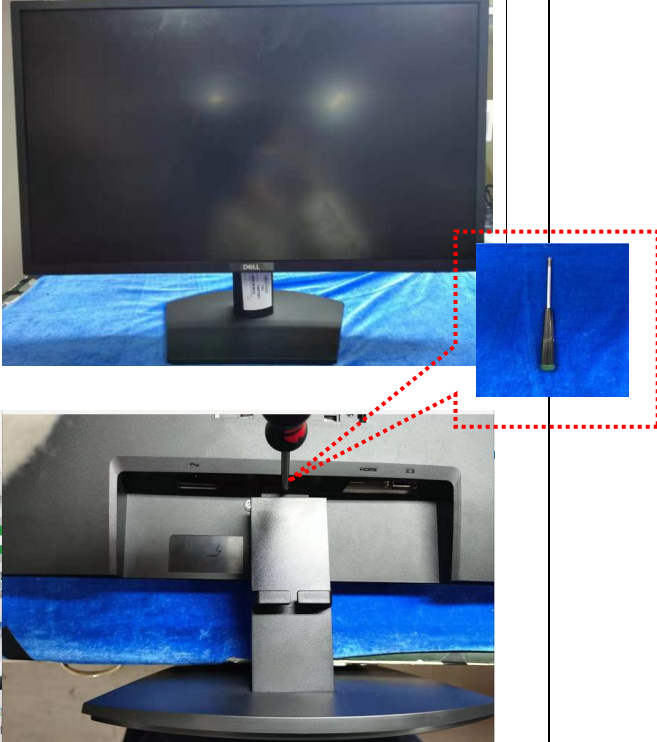
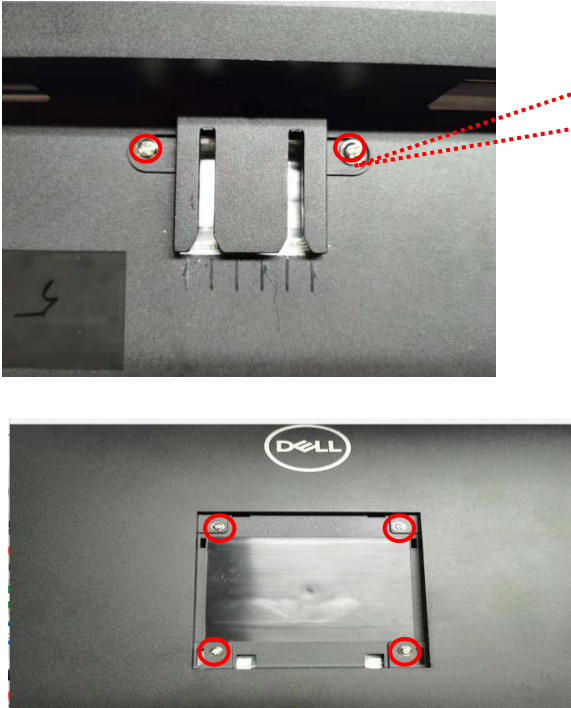



# 1. Mechanical Instruction

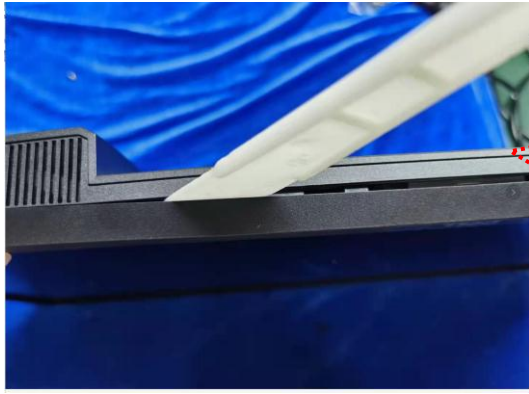
## 1.1 Disassembly Procedures

Tools: 2 Power screwdrivers ( $\phi=5\text{mm}$ ,  $L=60\text{mm}$ ); 1 small cross screwdriver; turnbuckle driver;

Setting: Power screwdriver torque  $A=6\text{ kgF.Cm}$

Step	Figure	TOOL	Remark
<p>Remove the Base ass'y.</p>			<p>Use the tip of the screw driver to press the hidden button and pull out the stand.</p> <p>Note: Put the monitor on a flat, soft and clean surface.</p>
			<p>Unscrew the 6 screws by the Philips-head Screwdriver.</p> <p>Torque=<math>6\pm 1\text{kgf.c m}</math></p>

Remove the Rear cover

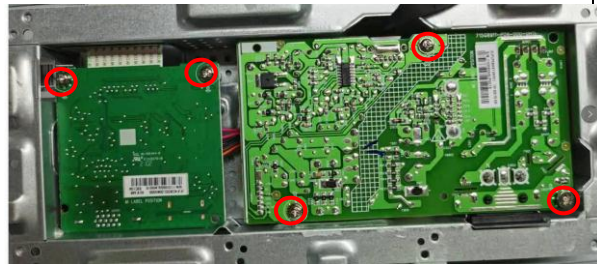


Take scraper insert the bezel bottom site

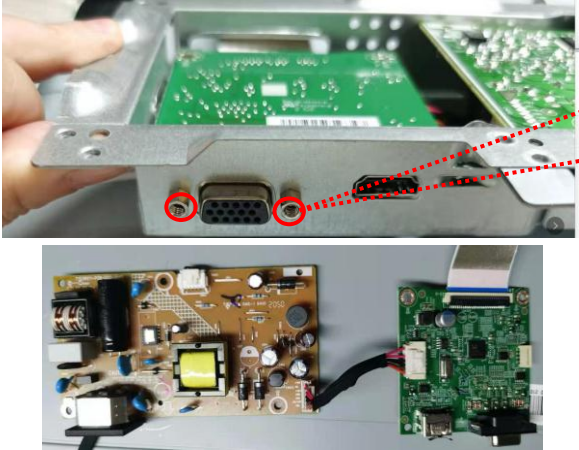



Disconnect the FFC cables and LVDS cable.



Tear out all the tapes.  
Unscrew the 2 screws on the mainframe.  
Torque= $6\pm 1$ kgf.c  
m  
Tear out the wires and mylar.



remove the screws on the board by the Philips-head.  
Torque= $6\pm 1$ kgf.c  
m

<p><b>Remove the mainboard and power board</b></p>			<p>Unscrew the screws by the hexagon screwdriver. Torque=6±1kgf.cm</p>
<p><b>Remove the bezel</b></p>			<p>Remove the screws on the keyboard</p>
<p><b>Panel</b></p>			

**1.2. Product material information**

The following substances, preparations, or components should be disposed of or recovered separately from other WEEE in compliance with Article 4 of EU Council Directive 75/442/EEC.

Capacitors / condensers (containing PCB/PCT)	No used
Mercury containing components	No used
Batteries	No used
Printed circuit boards (with a surface greater than 10 square cm)	Product has printed circuit boards (with a surface greater than 10 square cm)
Component contain toner, ink and liquids	No used
Plastic containing BFR	No used
Component and waste contain asbestos	No used
CRT	No used
Component contain CFC, HCFC, HFC and HC	No used
Gas discharge lamps	No used
LCD display > 100 cm <sup>2</sup>	Product has an LCD greater than 100 cm <sup>2</sup>
External electric cable	Product has external cables
Component contain refractory ceramic fibers	No used
Component contain radio-active substances	No used
Electrolyte capacitors (height > 25mm, diameter > 25mm)	Product has electrolyte capacitors (height > 25mm, diameter > 25mm)

### 1.3. Tools Required

List the type and size of the tools that would typically can be used to disassemble the product to a point

where components and materials requiring selective treatment can be removed.

Tool Description:

- Screwdriver (Phillip-head, Hexagonal head)
- Penknife
- Soldering iron and absorber