
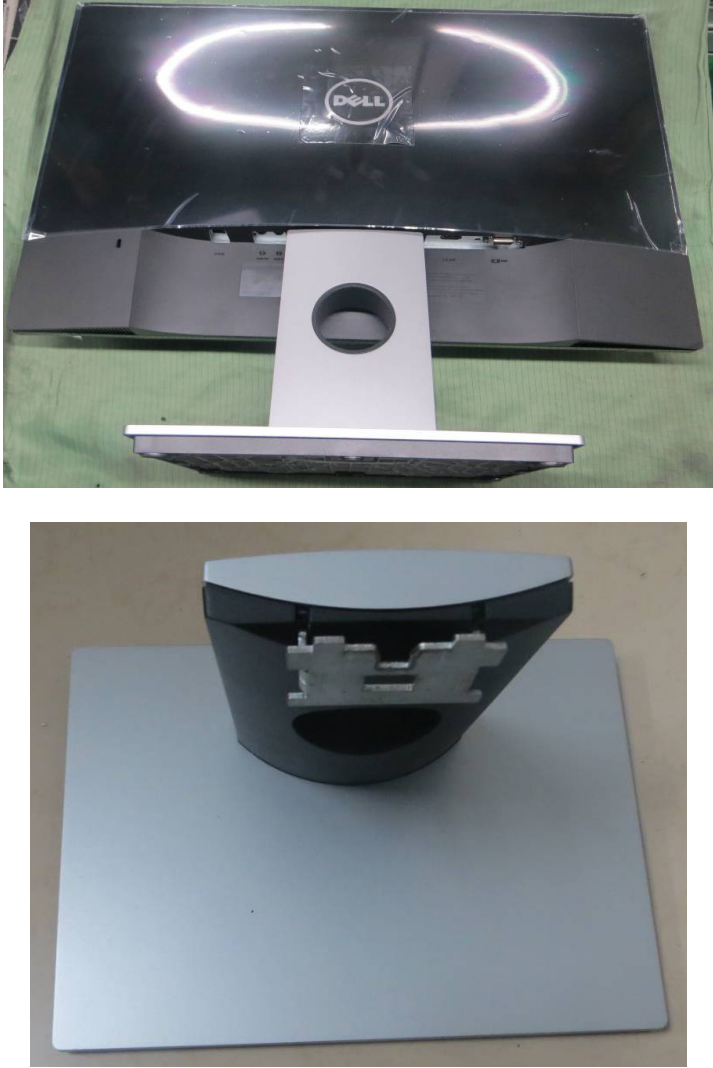
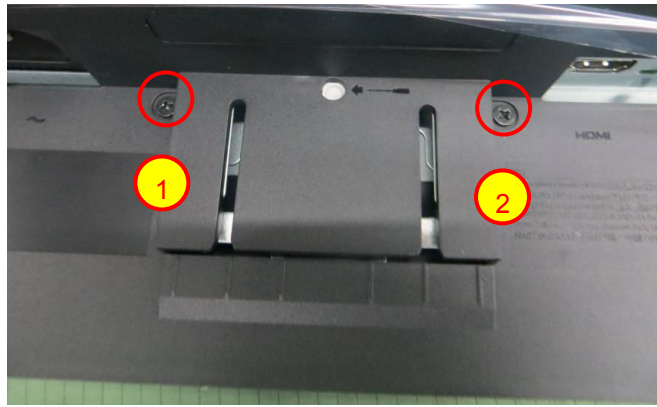


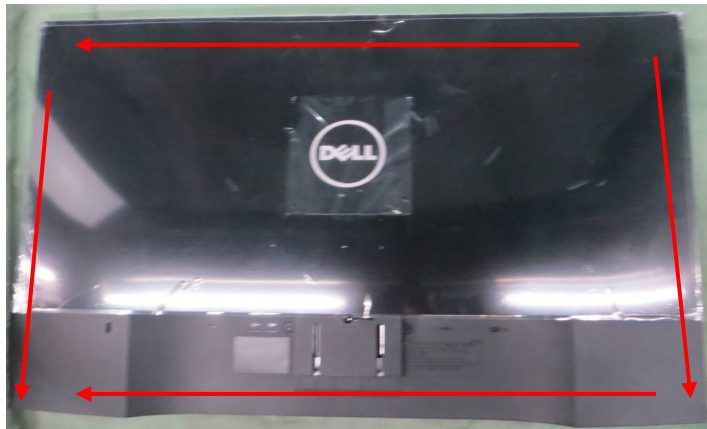
1. Disassembly Procedures:

Step	Figure	Remark
<p>S1. The FRONT VIEW</p>		<p>Turn off power, Unplug external cables from product</p>
<p>S2. Remove the STAND-BASE ASS'Y</p>		<p>To remove the stand:</p> <ol style="list-style-type: none"> 1. Press and hold the stand release button. 2. Lift the stand up and away from the monitor. <p>Note: To prevent scratches on the LCD screen while removing the stand, ensure that the monitor is placed on a soft, clean surface.</p>

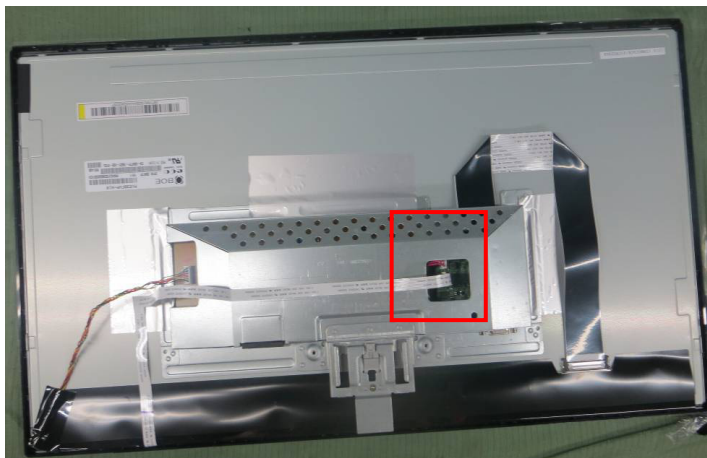
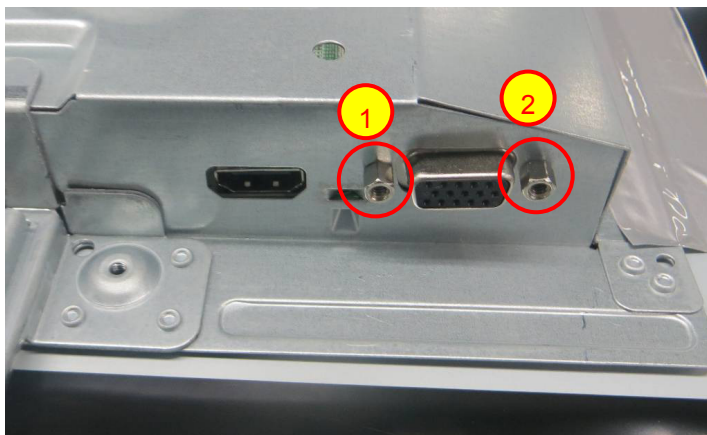
S3. Remove the REAR COVER

Use a Philips-head screwdriver to remove 2 screws for unlocking mechanisms.

(No.1~2 screw size=M3x4;
Torque=4±1kgf.cm)



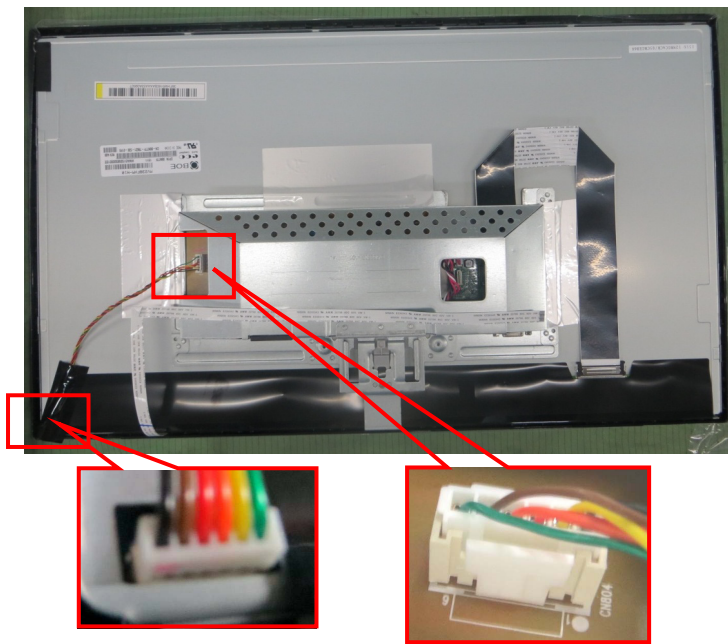
Use Penknife to separate the bezel and rear cover follow the arrows in sequence, then you can take out rear cover.

S4. Disconnect the FFC cable**S5. Remove the VGA**

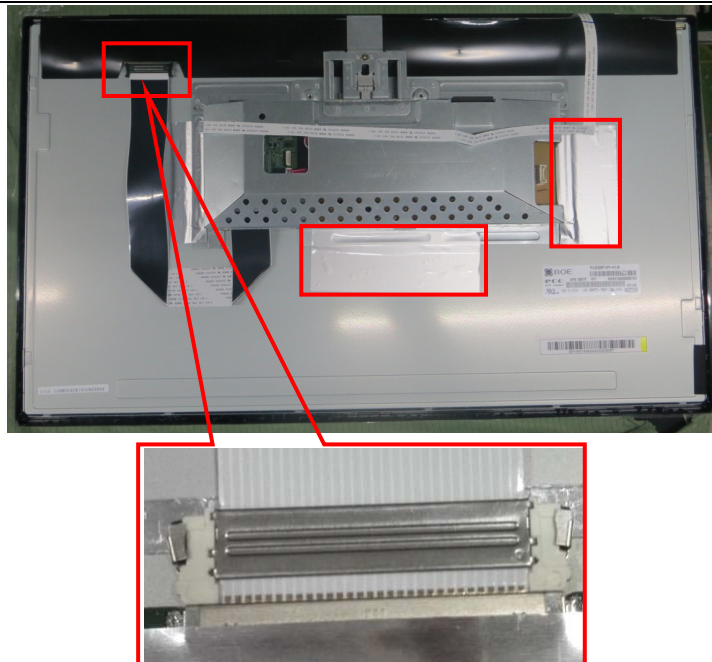
Use a hex screwdriver to remove 2 screws for unlocking mainboard.

(No.1~2 is Hex-screw,
Torque= 4.5±0.5kgf.cm)

S6. Remove the FFC cable



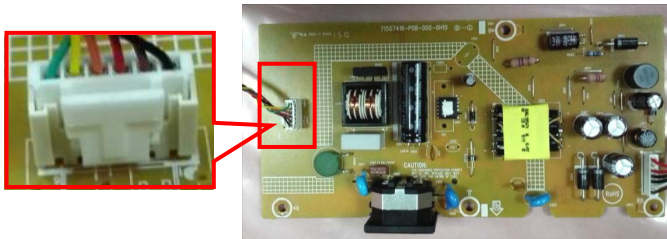
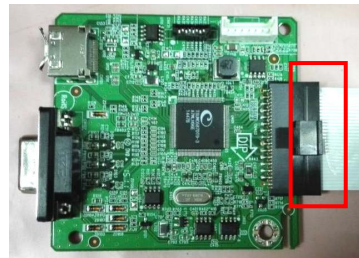
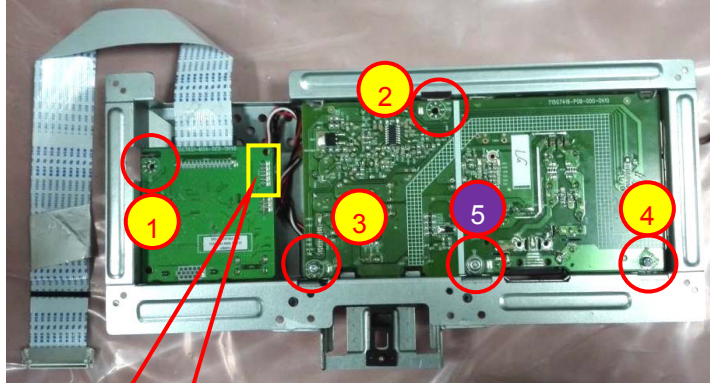
S7. Remove the tape and panel FFC cable



S8. Remove the MAIN FRAME



Remove and turn over it.



S9. Remove the MAIN & POWER BOARD

Use a Philips-head screwdriver to remove 5 screws for unlocking mainboard and power board

(No.1~4 screw

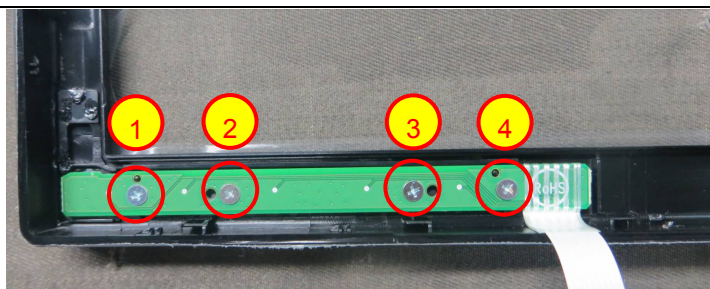
size=M4x8;

Torque= 6 ± 1 kgf.cm;

No.5 screw size=D3x6;

Torque= 6 ± 1 kgf.cm)

S10. Remove the KEY BOARD



Use a Philips-head screwdriver to remove 4 screws for unlocking Key board.

(No.1~4 screw size=

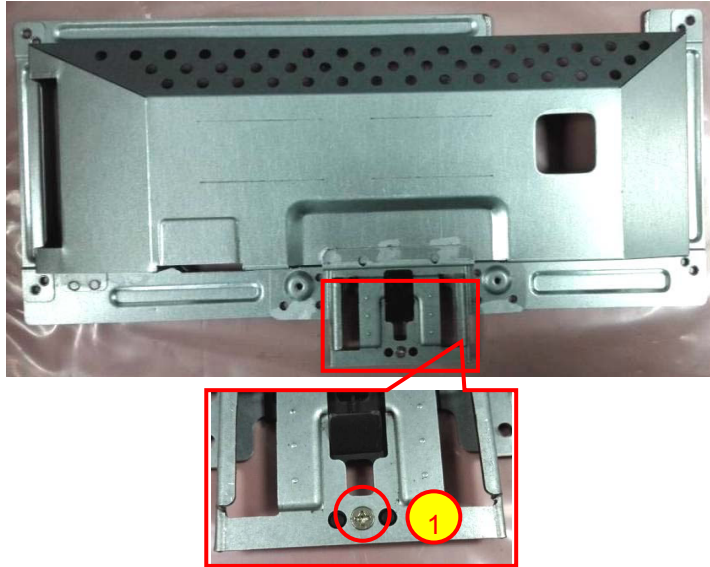
M2x2.5

Torque= 0.9 ± 0.4 kgf.cm)

S11. The PANEL



S12. Remove the screw



Use a Philips-head screwdriver to remove 1screws for unlocking main frame
(No.1 screw size= Q3x6
Torque=4±1kgf.cm)

S13. The MAIN FRAME



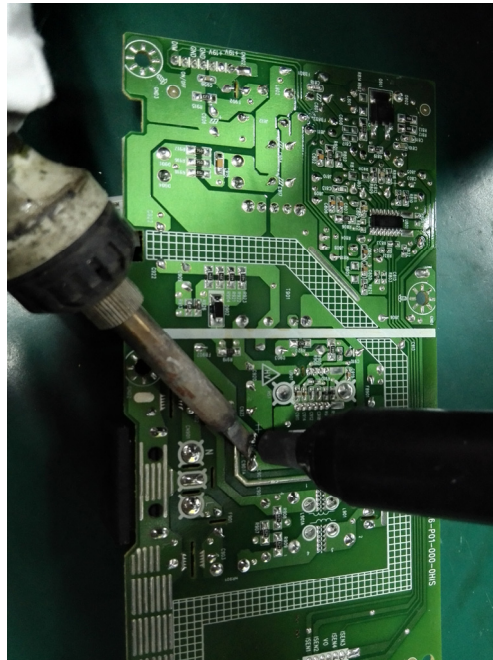
S14. The BEZEL



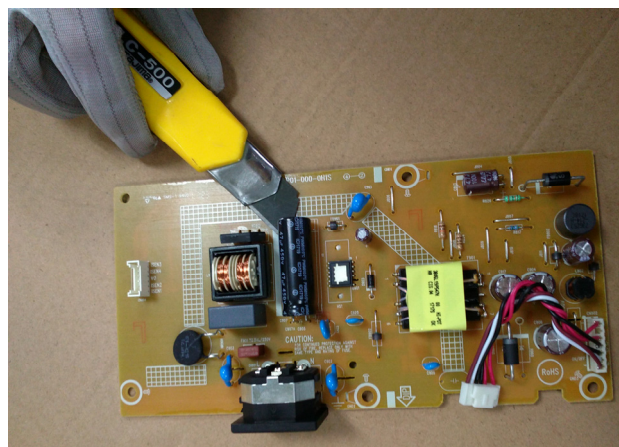


Remove electrolyte capacitors (red mark) from printed circuit boards

S15.Remove capacitors



Take out bulk cap. pin solder with soldering iron and absorber



Lift the bulk cap. up and away from the PCB

2. Product material information

The following substances, preparations, or components should be disposed of or recovered separately from other WEEE in compliance with Article 4 of EU Council Directive 75/442/EEC.

Capacitors / condensers (containing PCB/PCT)	No used
Mercury containing components	No used
Batteries	No used
Printed circuit boards (with a surface greater than 10 square cm)	Product has printed circuit boards (with a surface greater than 10 square cm)
Component contain toner, ink and liquids	No used
Plastic containing BFR	No used
Component and waste contain asbestos	No used
CRT	No used
Component contain CFC, HCFC, HFC and HC	No used
Gas discharge lamps	No used
LCD display > 100 cm ²	Product has an LCD greater than 100 cm ²
External electric cable	Product has external cables
Component contain refractory ceramic fibers	No used
Component contain radio-active substances	No used
Electrolyte capacitors (height > 25mm, diameter > 25mm)	Product has electrolyte capacitors (height > 25mm, diameter > 25mm)

3. Tools Required

List the type and size of the tools that would typically can be used to disassemble the product to a point where components and materials requiring selective treatment can be removed.

Tool Description:

- Phillip head Screwdriver
- Hex Screwdriver
- Penknife
- Soldering iron and absorber