
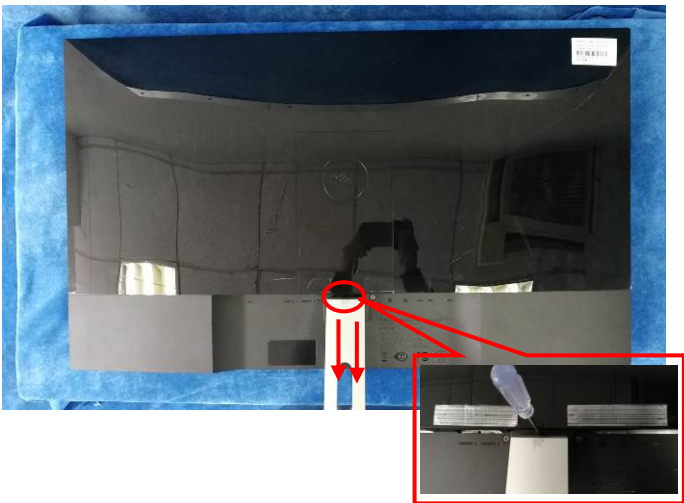
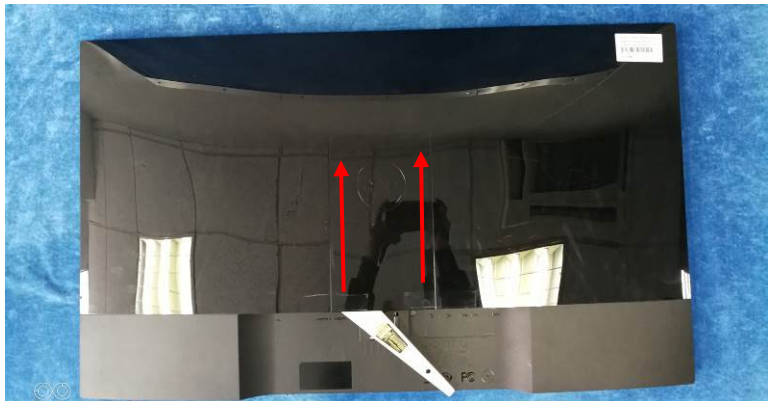
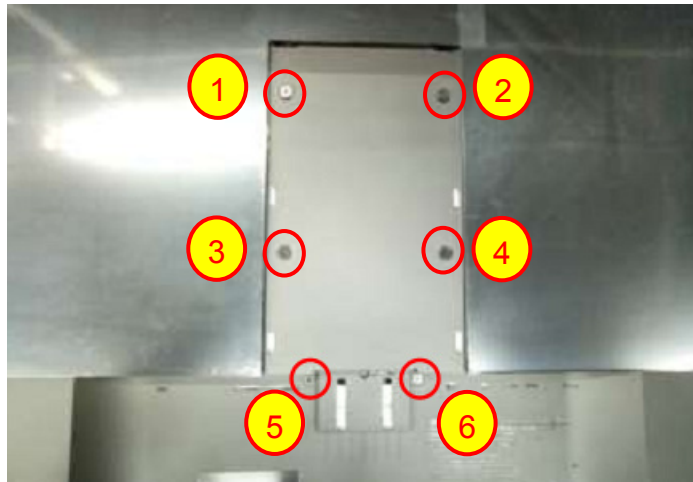


1. Disassembly Procedures:

Step	Figure	Remark
<p>S1.Before disassemble</p>		<p>Turn off power, Unplug external cables from product</p>
<p>S2. Remove the STAND-BASE ASS'Y</p>		<p>To remove the stand: Press the button on the red circle then pull out the stand follow the arrow, stand will be remove Note: To prevent scratches on the LCD screen while removing the stand, ensure that the monitor is placed on a soft, clean surface.</p>
<p>S3.Remove the stand-base assy</p>		<p>Push DECO REAR COVER</p>

S4.Remove the REAR COVER.



Use a Philips-head screwdriver to remove 6 screws for unlocking mechanisms.

(No.1~4 screw size=M4x10;

Torque=12±2kgf.cm

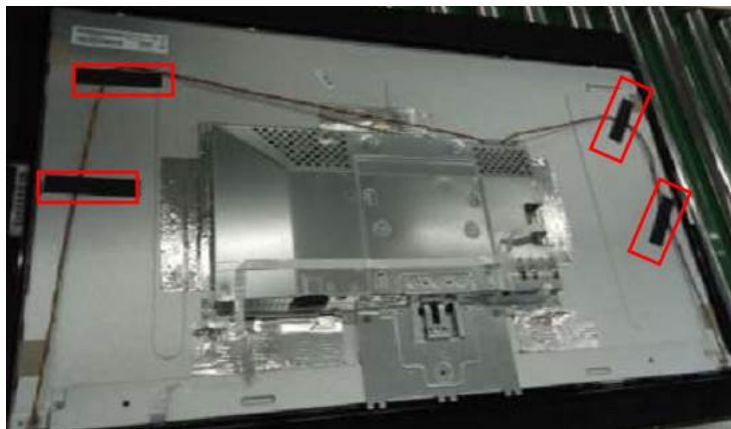
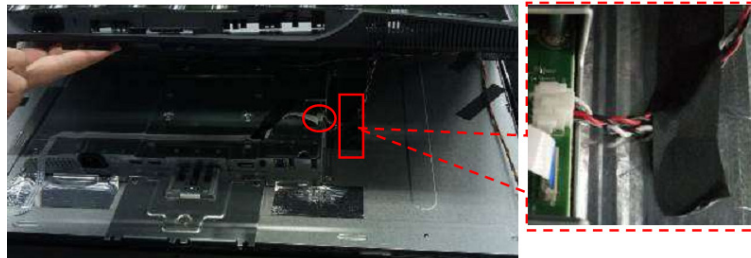
No.5~6 screw size=P3x4;

Torque=6±1kgf.cm)

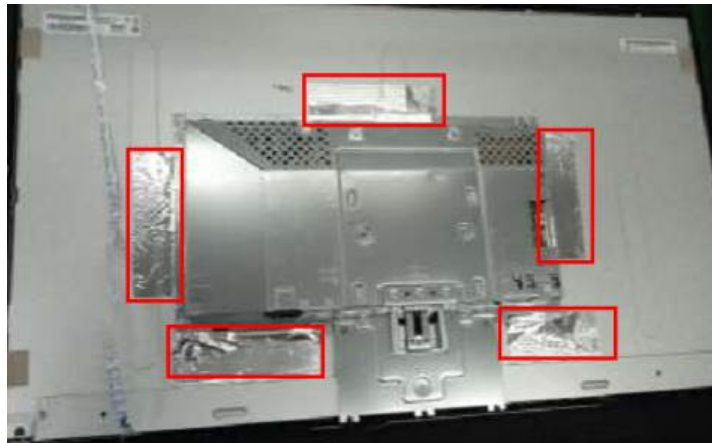
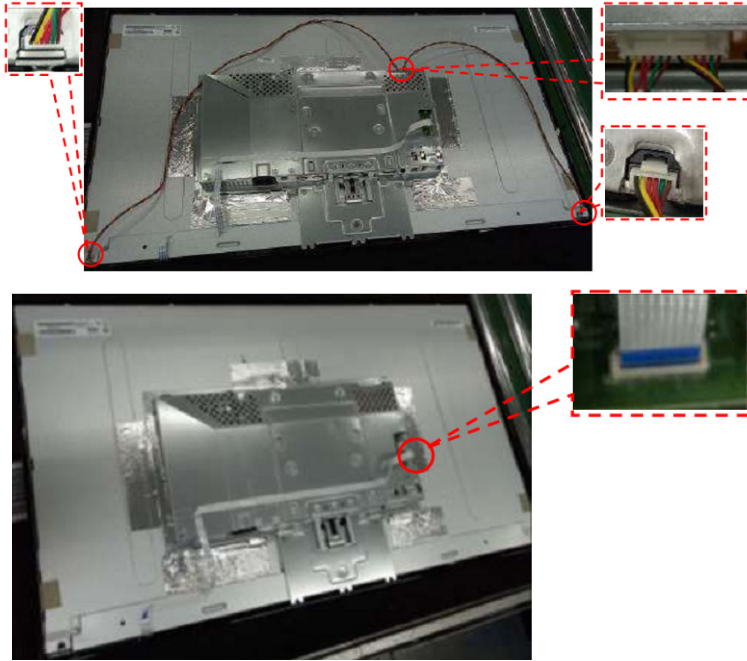


Use Penknife to separate the bezel and rear cover follow the arrows in sequence, then you can take out rear cover.

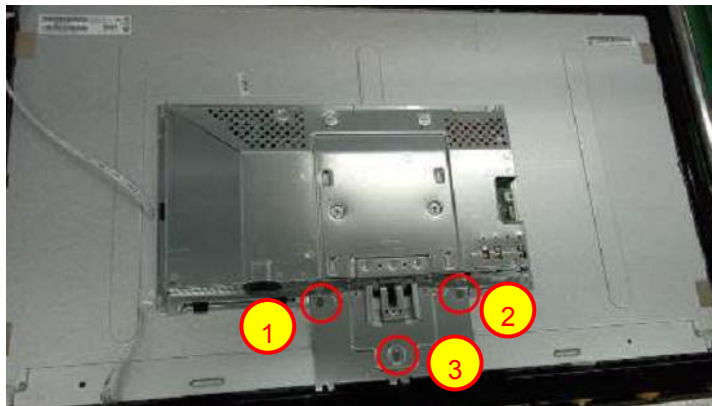
S5.Remove the cables and tapes



Disconnect the pins and the tapes.

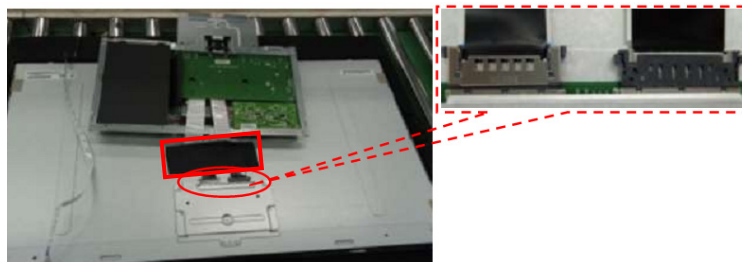


S6.Remove the screws

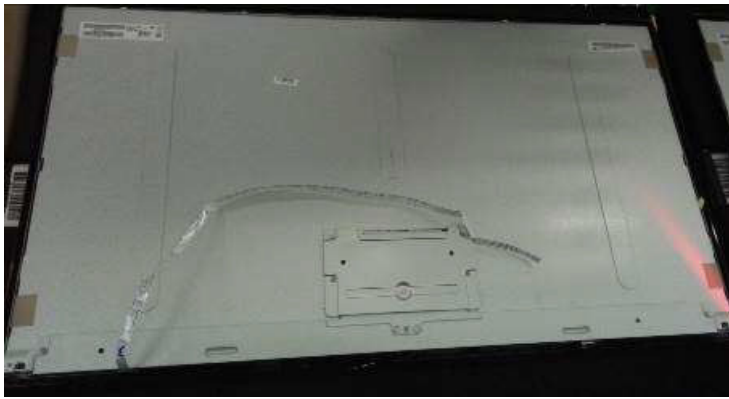


Use a Philips-head screwdriver to remove 3 screws for unlocking main frame
(No.1~3 screw size=Q3x6;
Torque=4±1kgf.cm)

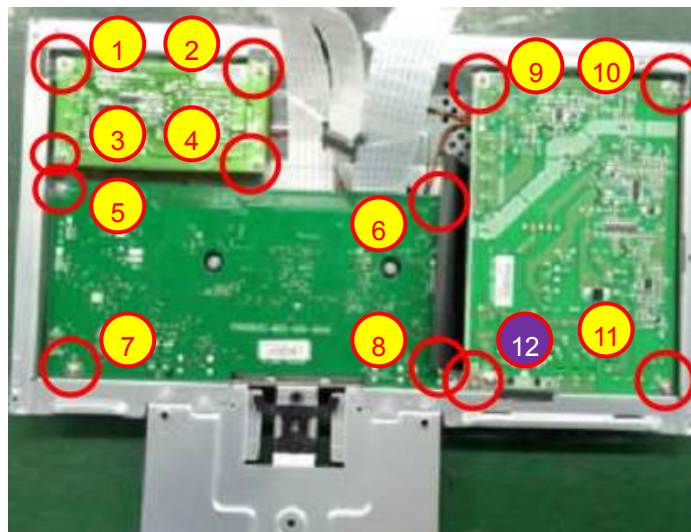
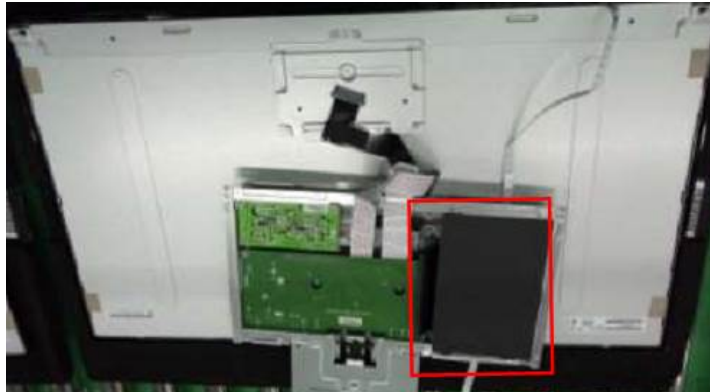
S7.Take off the tape and disconnect the pins



S8.The Panel



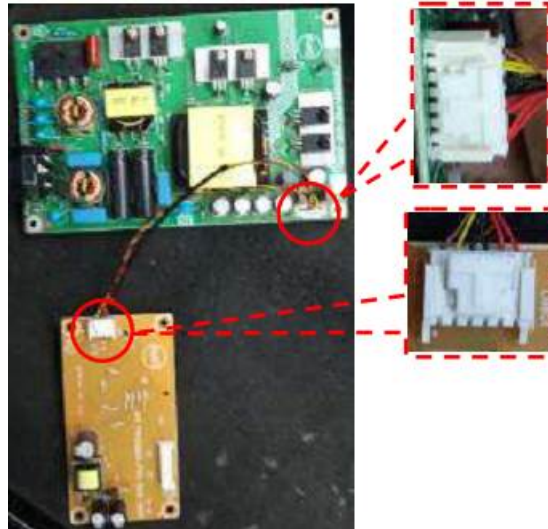
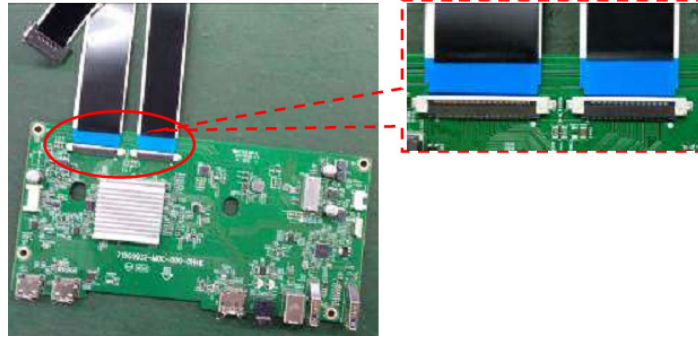
S9.Remove the Main Board, converter board and adapter board



Remove the screws and the mylar.

Use a Philips-head screwdriver to remove 12 screws for unlocking main board, power board, connect board (No.1~11 screw size=D3x6; Torque=6±1kgf.cm
No.12 screw size=M4x6; Torque=6±1kgf.cm)

S10. Disconnect the pins

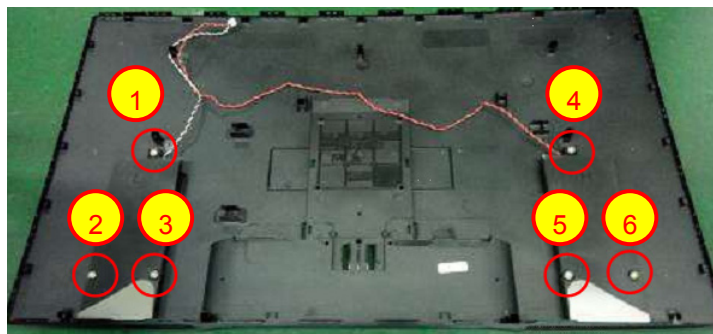


S11. The Mainframe



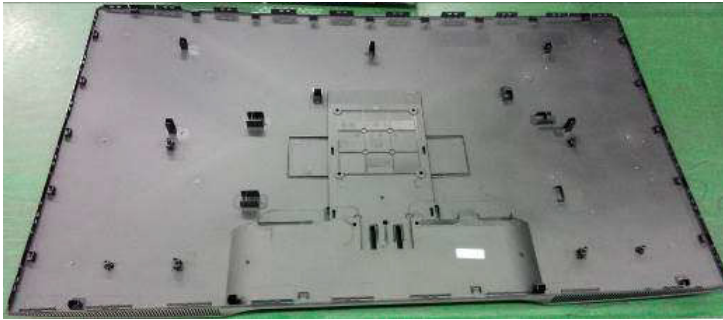
Mainframe

S12. Remove the screws to remove the Speakers

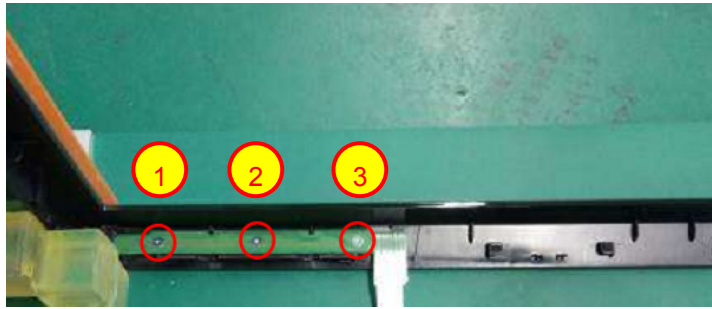


Use a Philips-head screwdriver to remove 6 screws for remove speakers
(No.1~6 screw size=M3x6;
Torque=6±1kgf.cm)

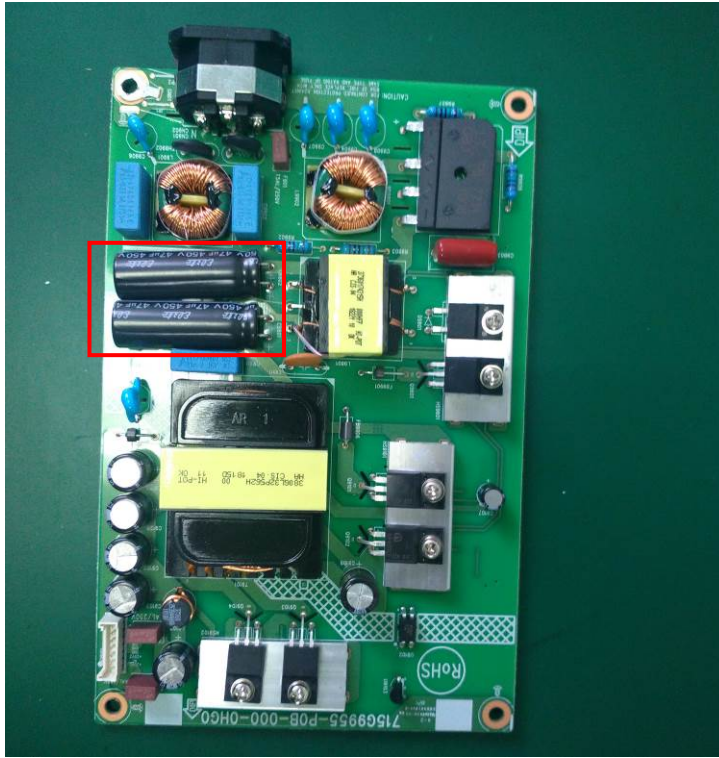
**S13.The Rear
Cover**



**S14.Remove the
screws to
remove the
Keyboard**

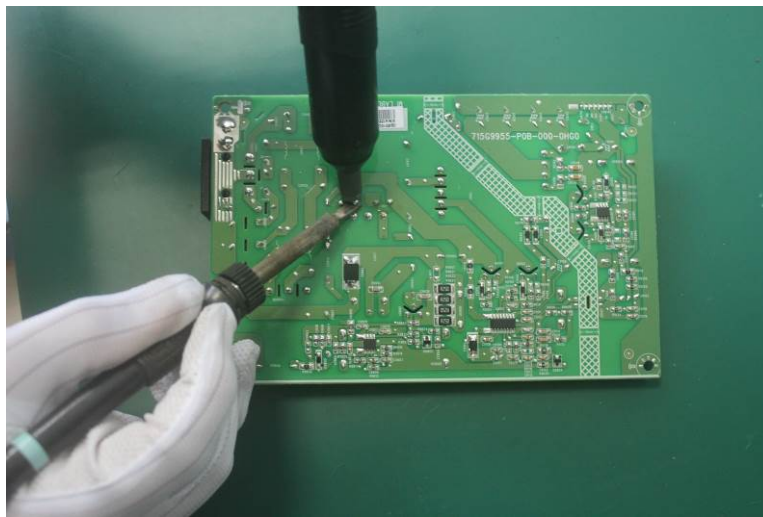


Use a Philips-head
screwdriver to remove
3 screws for remove
key board
(No.1~3 screw
size=M2x2.5;
Torque=0.9±0.4kgf.cm)

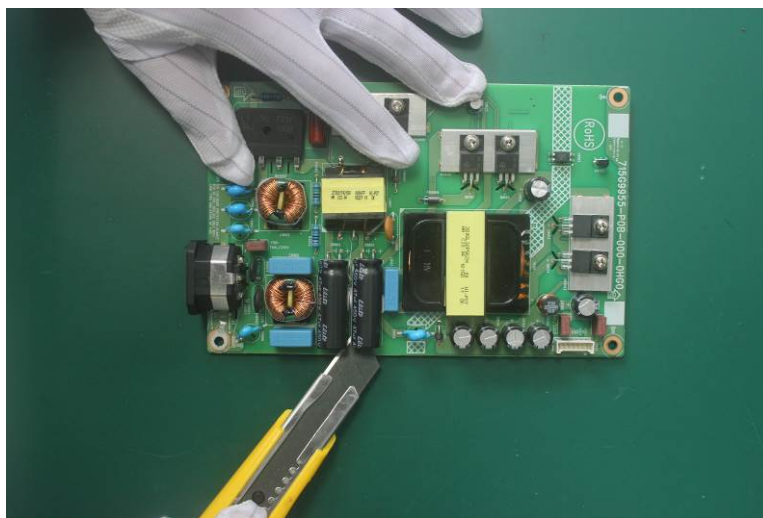


Remove electrolyte capacitors (red mark) from printed circuit boards

S15.Remove capacitors



Take out bulk cap. pin solder with soldering iron and absorber



Lift the bulk cap. up and away from the PCB

2. Product material information

The following substances, preparations, or components should be disposed of or recovered separately from other WEEE in compliance with Article 4 of EU Council Directive 75/442/EEC.

Capacitors / condensers (containing PCB/PCT)	No used
Mercury containing components	No used
Batteries	No used
Printed circuit boards (with a surface greater than 10 square cm)	Product has printed circuit boards (with a surface greater than 10 square cm)
Component contain toner, ink and liquids	No used
Plastic containing BFR	No used
Component and waste contain asbestos	No used
CRT	No used
Component contain CFC, HCFC, HFC and HC	No used
Gas discharge lamps	No used
LCD display > 100 cm ²	Product has an LCD greater than 100 cm ²
External electric cable	Product has external cables
Component contain refractory ceramic fibers	No used
Component contain radio-active substances	No used
Electrolyte capacitors (height > 25mm, diameter > 25mm)	Product has electrolyte capacitors (height > 25mm, diameter > 25mm)

3. Tools Required

List the type and size of the tools that would typically can be used to disassemble the product to a point where components and materials requiring selective treatment can be removed.

Tool Description:

- Phillip head Screwdriver
- Penknife
- Soldering iron and absorber