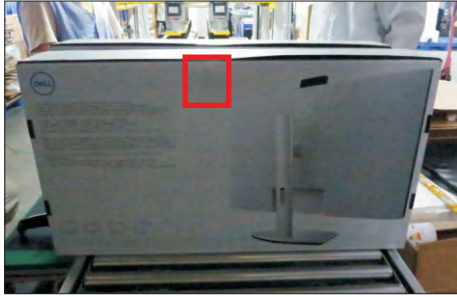


1. Disassembly Procedures:

S1 Open the carton with a proper tool.



Take out all accessories including label(optinal), QSG, USB Type-C cable, power cable, manual and other packing materials from the carton. (Note: It depends on whether users returning the accessories)

S2



S3

Take out the base and molded pulp from the carton, then take out the monitor and stand from the carton.



S4

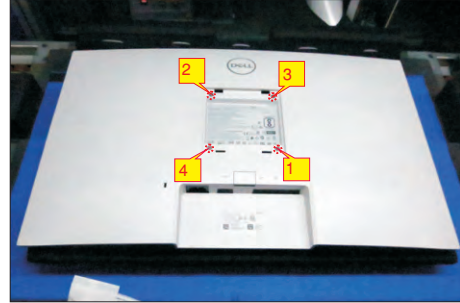
Take out the monitor from EPE-bag and put the LCD monitor on a protective cushion.



S5

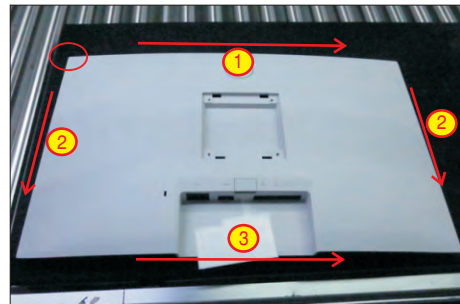
Use a Philips-head screwdriver to remove 4pcs screws for unlocking rear cover with the assembled unit.

(No.1~4 screw size=M4x11; Torque=11±1kgfxcM)



Wedge your fingers between rear cover and the middle bezel on the corners of the top side of the monitor to release the rear cover, then use one hand to press the middle bezel, the other hand to pull up carefully the rear cover in order of arrow preference for unlocking mechanisms of rear cover. Remove the rear cover and put it aside.

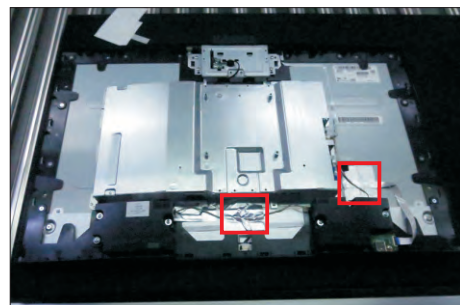
S6

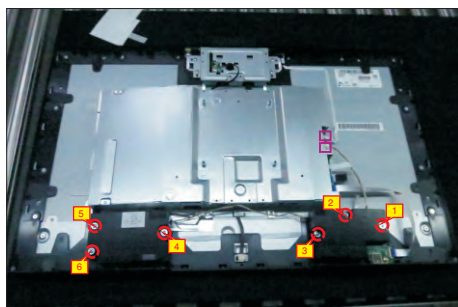


Tear off 2pcs aluminum foils, disconnect the Mic wire and speaker's cable away from the connectors of the interface board. Use a Philips-head screwdriver to remove 6pcs screws for unlocking the two speakers.

S7

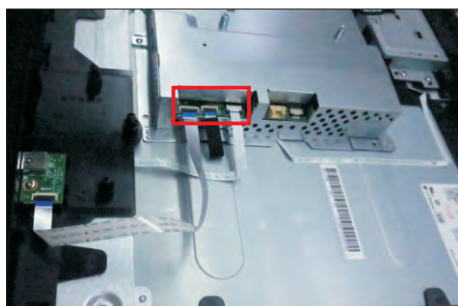
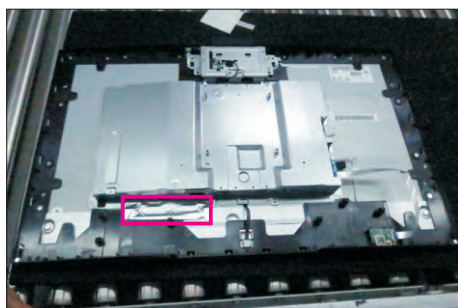
(No.1~6 screw size=M3x3.5, Torque=3~4 kgfxcM)





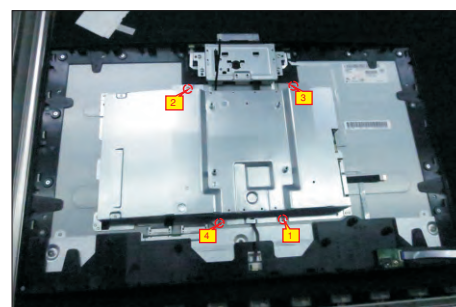
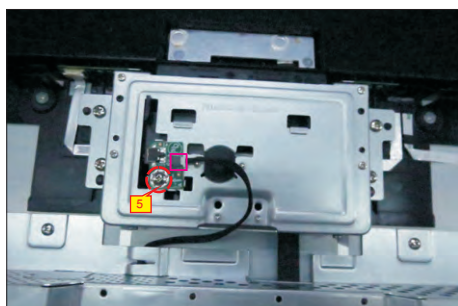
S8

Release the speakers from the probers of the middle bezel, then tear off 1pcs aluminum foil to uncover the two LVDS connector, and then disconnect the USB cable, function key cable and camera connective cable away from the connectors of the interface board.



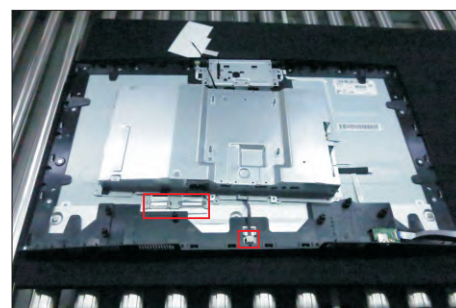
S9

Disconnect the connective cable from the connector of the connect board, then use a Philips-head screwdriver to remove one screw for unlocking the connect board, then release the connect board from the hooks of the camera unit. Use a Philips-head screwdriver to remove 4pcs screws for unlocking the bracket chassis module with the panel module. (No.1~5 Screw size= M3x3, Torque=5±0.5kgfxcM)



S10

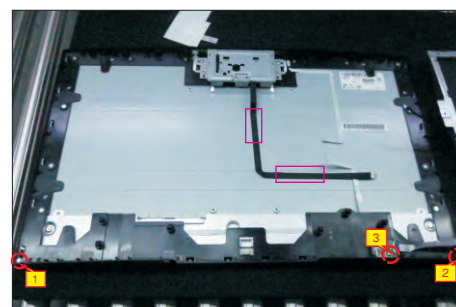
Disconnect two LVDS cables and 1pcs panel lamp cable away from the connectors of the panel module, then take away the bracket chassis module and then put the bracket chassis module on a protective cushion.



S11

Use a Philips-head screwdriver to remove 1pcs screw for unlocking the USB board with middle bezel, then release the Usb board from the hooks of the middle bezel. Use a Philips-head screwdriver to remove 2pcs screws for unlocking the middle bezel with front bezel. Tear off the tape to release the camera connective cable from the panel.

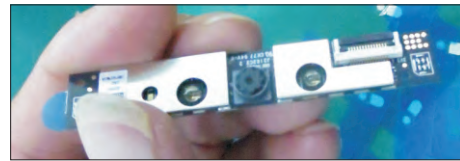
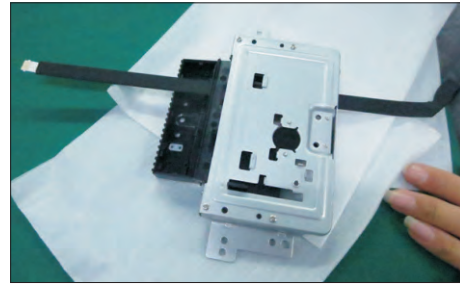
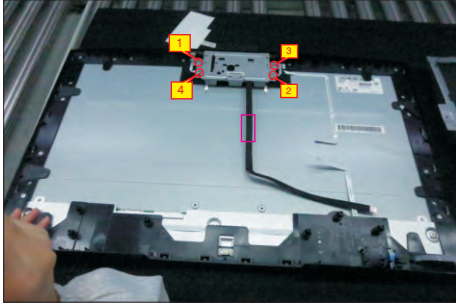
(No.1~2 screw size=M2x3.3, Torque=1±0.2kgfxcM;
No.3 screw size=M3x4, Torque=5±0.5kgfxcM)



S12

Use a Philips-head screwdriver to remove 4pcs screws for unlocking the camera board, and then remove assembled camera unit and put it aside for later disassembling.

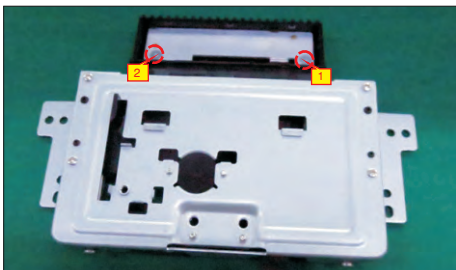
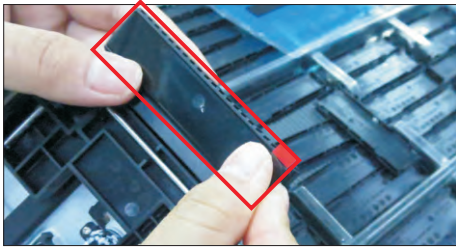
(No.1~4 screw size=M3x3.5, Torque=2±0.5kgfxcM)



S13

Tear off the camera glass, then release the back cover away from the unit, then use a Philips-head screwdriver to remove 2pcs screws for unlocking the holder board with the camera from the bracket unit, and then disconnect the connective cable from the camera. Tear off camera from the holder board.

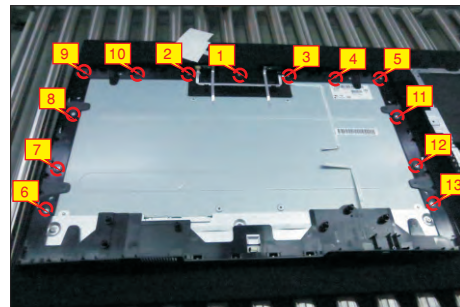
(No.1~2 screw size=M3x5, Torque=3±0.5kgfxcM)



S14

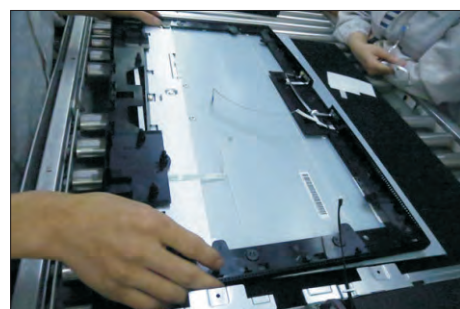
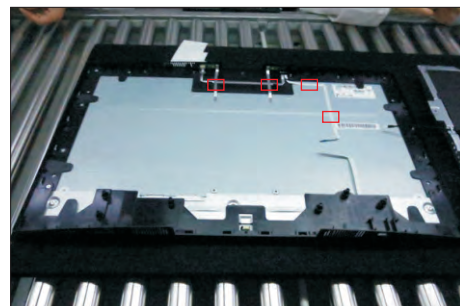
Use a Philips-head screwdriver to remove 13pcs screws for unlocking the middle bezel unit with the panel module.

(No.1~21 screw size=M3x4, Torque=5±0.5kgfxcM)



S15

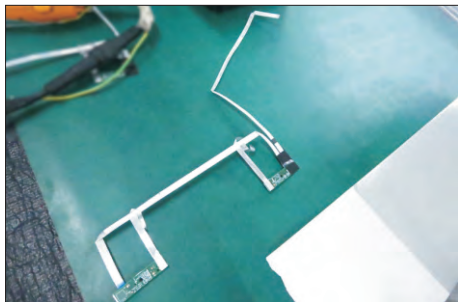
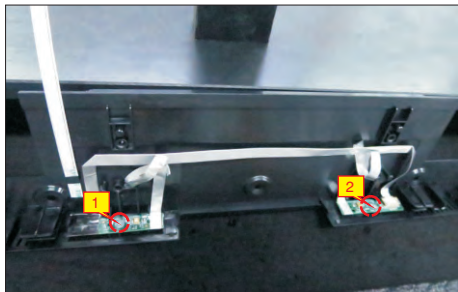
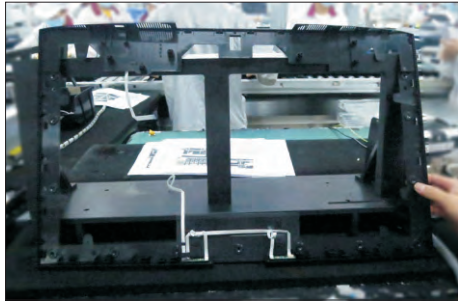
Tear off the Mic cable away from the panel, and then lift the middle bezel, then put it on a cushion foam for later disassembling.



S16

Put the middle bezel into a fixture. Use a Philips-head screwdriver to remove 2pcs screws to unlock the right and left Mic board, then release the right and left Mic board unit from the middle bezel by tearing off the aluminum foil.

(No.1~ screw size=M2x2.4, Torque=1±0.2kgfxcM)

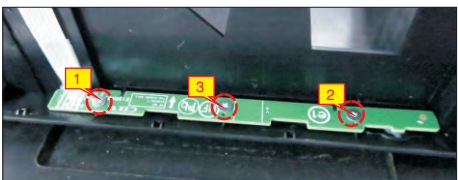
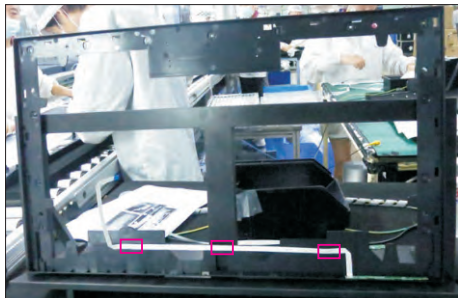


Turn over the middle bezel, and then tear off the adhesive tape for releasing the function key cable.

S17

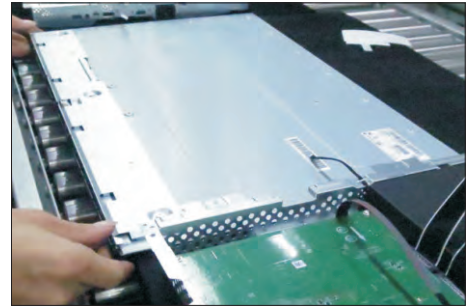
Use a Philips-head screwdriver to remove 3pcs screws to unlock the function key board.

(No.1~3 screw size=M2x2.4, Torque=1±0.2kgfxcM)



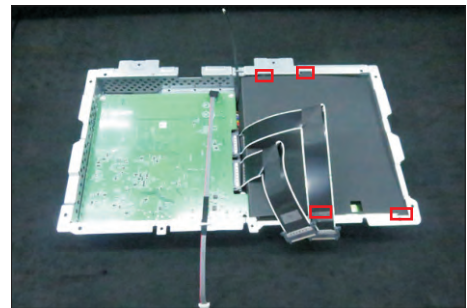
S18

Disassemble the front bezel with the panel module, then remove the front bezel.



S19

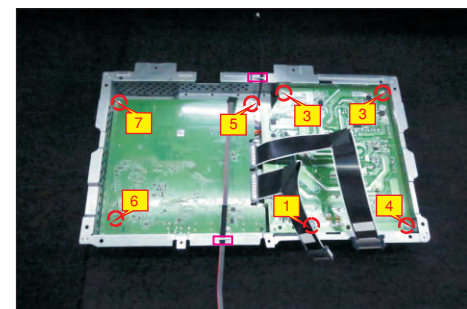
Remove the Mylar tape from the hooks of the bracket.



Use a Philips-head screwdriver to remove 7pcs screws for interface board and power board. Release the connective cable and panel lamp cable from the hooks of the bracket

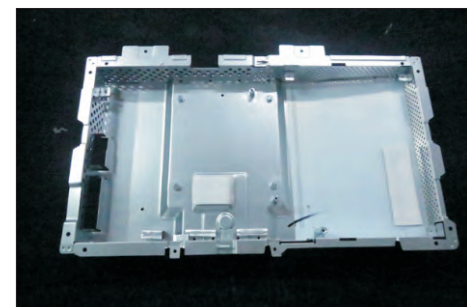
S20

(No.1 screw size=M4x8, Torque=5±0.5kgfxcM;
No.2~7 screw size=M3x7.5, Torque=5±0.5kgfxcM)



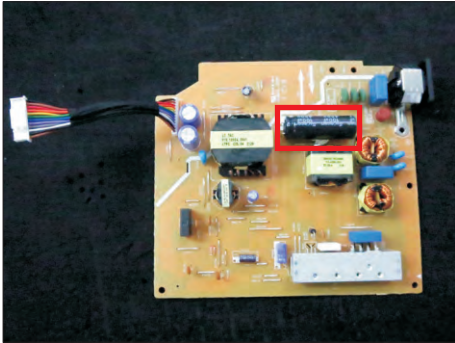
S21

Remove the power board and interface board from the bracket chassis module carefully, and then disconnect all of the cables.

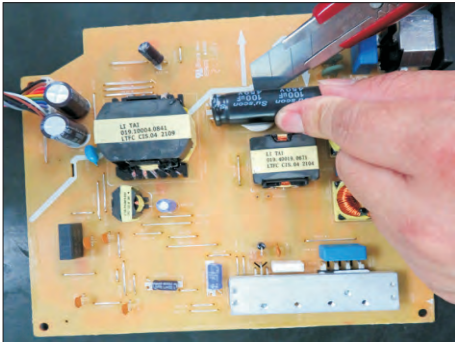


S22

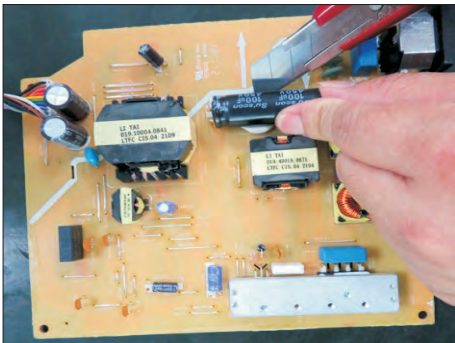
Remove electrolyte capacitors (red mark) from printed circuit boards.



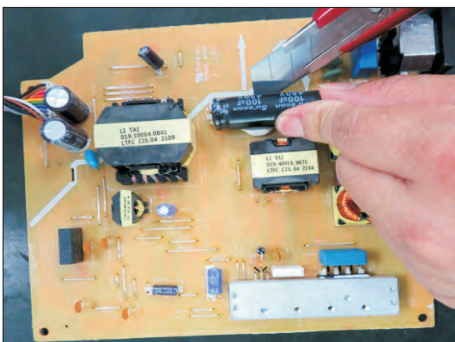
S22-1 Cut the glue between bulk cap. and PCB with a knife.



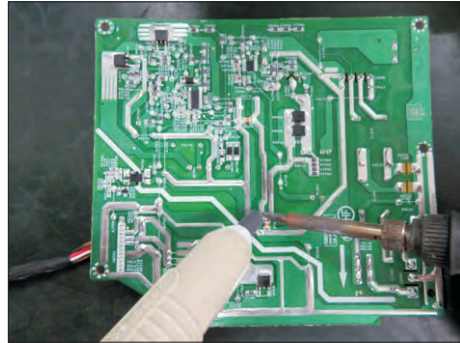
S22-2 Ensure cutting path within the glue, don't touch bulk cap. or PCB.



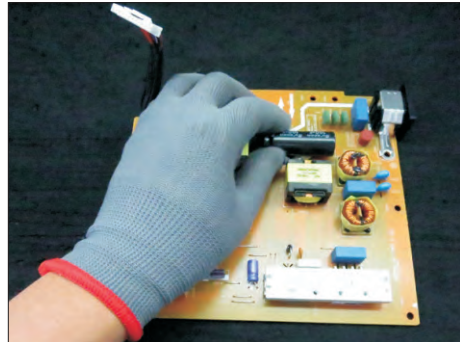
S22-3 Cut into the bottom of bulk cap. and pullit up carefully.



S22-4 Take out bulk cap. pin solder with soldering iron and absorber.



S22-5 Lift the bulk cap. up and away from the PCB.



2. Product material information

The following substances, preparations, or components should be disposed of or recovered separately from other WEEE in compliance with Article 4 of EU Council Directive 75/442/EEC.

Capacitors / condensers (containing PCB/PCT)	No used
Mercury containing components	No used
Batteries	No used
Printed circuit boards (with a surface greater than 10 square cm)	Product has printed circuit boards (with a surface greater than 10 square cm)
Component contain toner, ink and liquids	No used
Plastic containing BFR	No used
Component and waste contain asbestos	No used
CRT	No used
Component contain CFC, HCFC, HFC and HC	No used
Gas discharge lamps	No used
LCD display > 100 cm ²	Product has an LCD greater than 100 cm ²
External electric cable	Product has external cables
Component contain refractory ceramic fibers	No used
Component contain radio-active substances	No used
Electrolyte capacitors (height > 25mm, diameter > 25mm)	Product has electrolyte capacitors (height > 25mm, diameter > 25mm)

3. Tools Required

List the type and size of the tools that would typically can be used to disassemble the product to a point where components and materials requiring selective treatment can be removed.

Tool Description:

- Screwdriver (Phillip head) #1
- Screwdriver (Phillip head) #2
- Penknife
- Soldering iron and absorber