

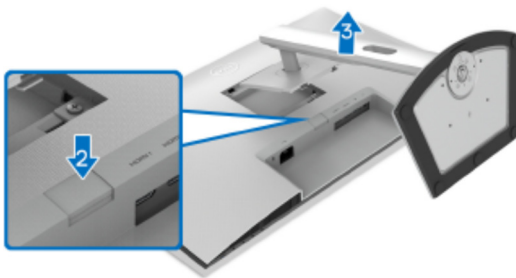
1. Disassembly Procedures

S1 Turn off the monitor.

S2 Place the monitor on a soft cloth or cushion.

Press and hold the stand release button at the back of the display.

Lift the stand assembly up and away from the monitor.

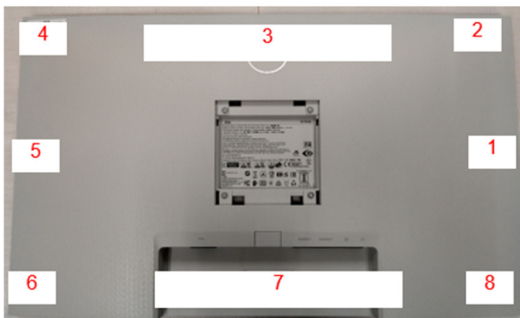


S3 Unlock 4 screws on Rear Cover

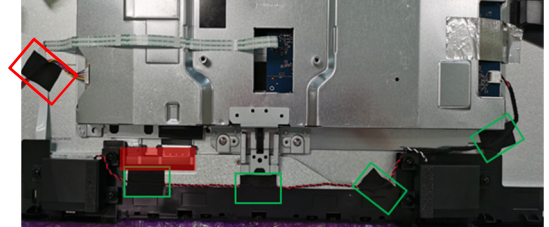


(Screw Torque: 8.5±1.0kgf)

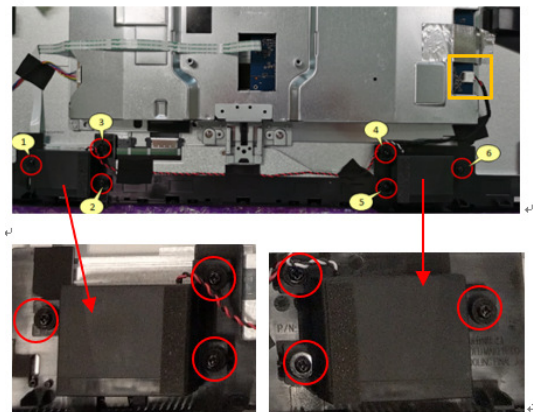
S4 Follow the sequence to disassemble Rear Cover from the monitor



S5 Tear off all adhesive tapes from backlight wire and SPK wire



S6 Unlock 6 SPK screws
Pull out SPK wire from I/F BD
Disassemble SPK from Middle Frame

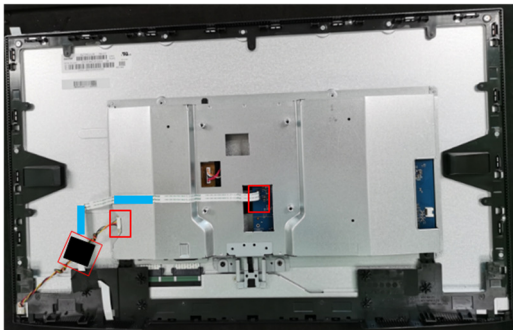
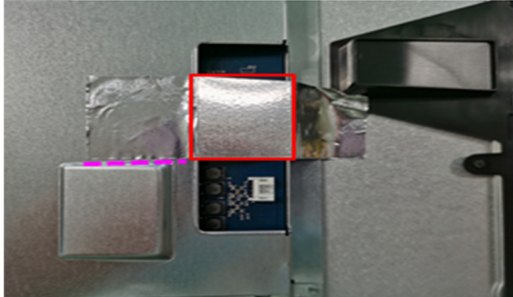


(Screw Torque: 4~6kgf)

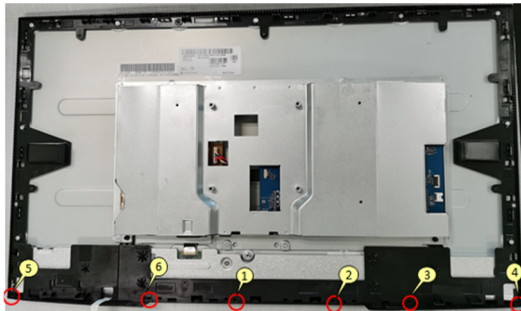
S7 Tear off AL Tape

Pull out CTRL FFC from I/F BD

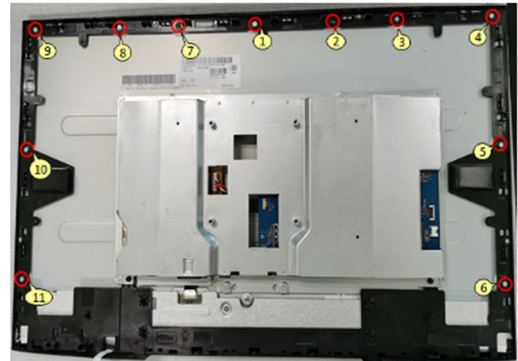
Pull out backlight wire from SPS BD and Panel



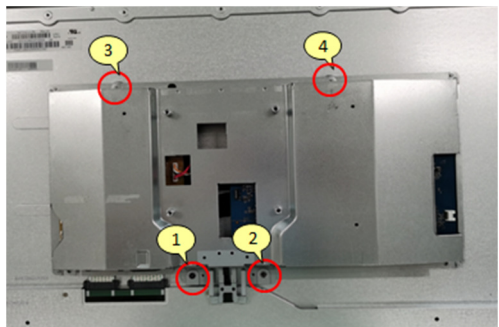
(Screw Torque: 6~7kgf)

S8 Unlock 6 "ASSY DECO" screws

(Screw Torque: 1.5~2.5kgf)

S9 Unlock 11 MF screws

(Screw Torque: 4~5kgf)

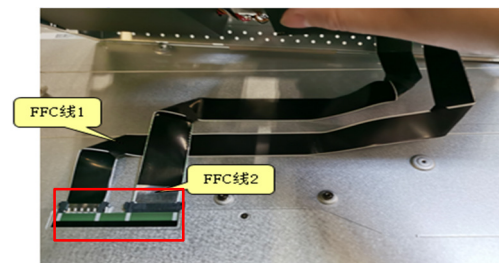
S10 Unlock 4 Main SHD screws

(Screw Torque: 6~7kgf)

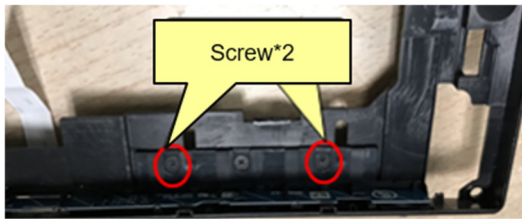
S11 Pull out FFC LVDS from the Panel

Take off Main SHD from Panel

Disassemble Middle Frame and "ASSY DECO" from panel



S12 Unlock 2 screws on CTRL BD

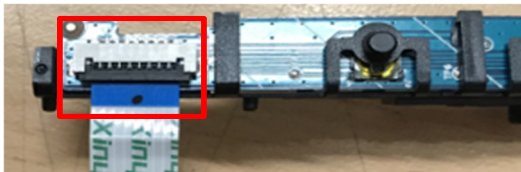


(Screw Torque: 1.5~2.5kgf)

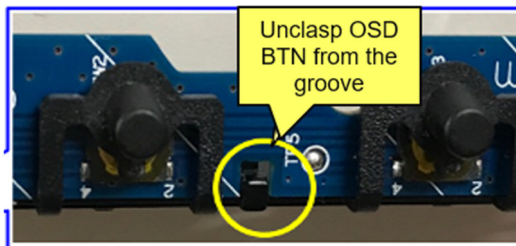
S13 Tear off CTRL BD FFC from Middle Frame



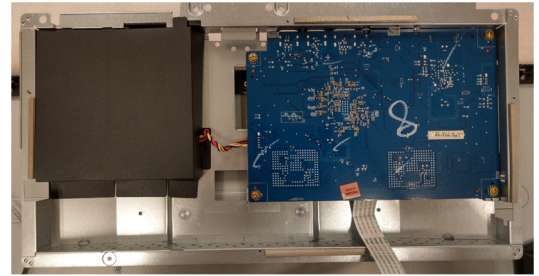
S14 Disassemble CTRL BD FFC from CTRL BD



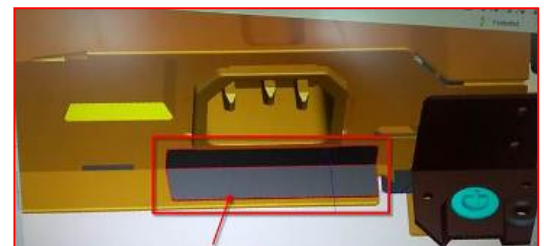
S15 Disassemble CTRL BD from OSD BTN



S16 Disassemble Safety Mylar from SPS BD

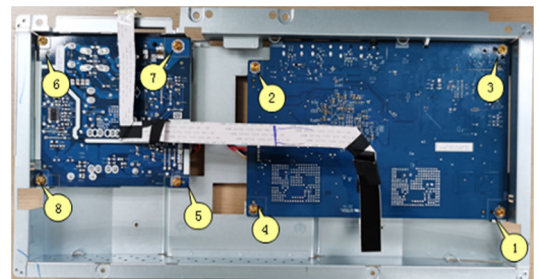


S17 Disassemble the little Mylar from Main SHD



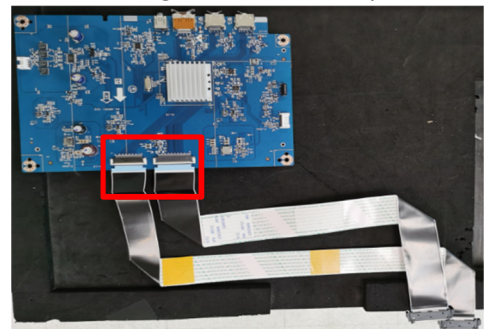
S18 Unlock 8 PCBA screws

Disassemble I/F BD & SPS BD from Main SHD

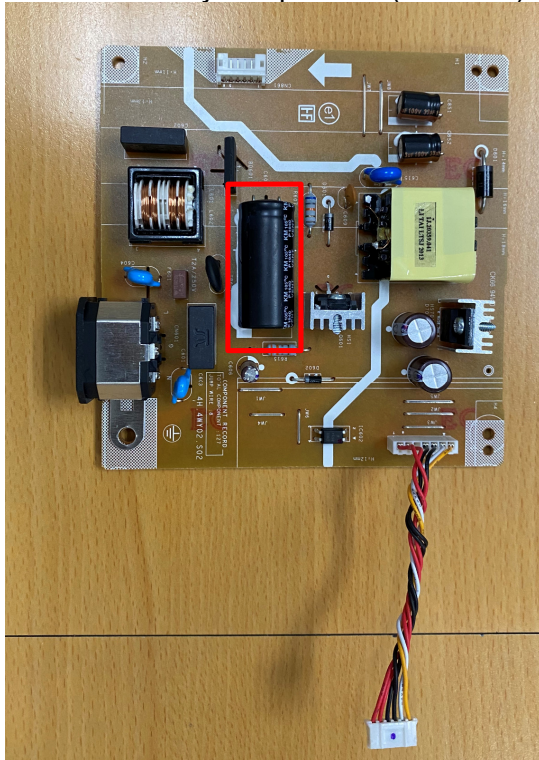


(Screw Torque: 6~7kgf)

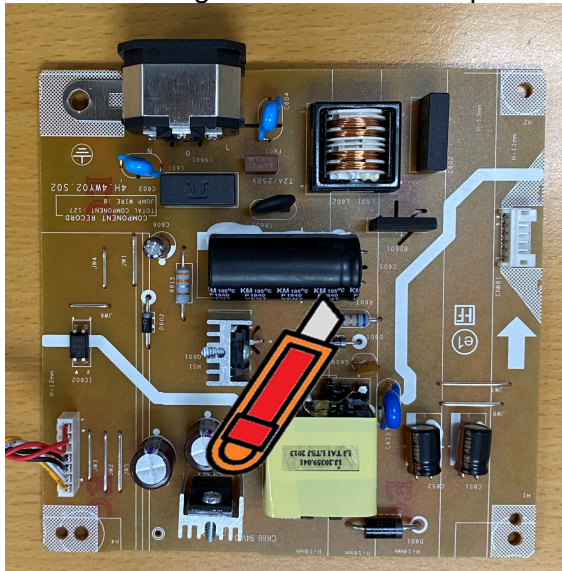
S19 Pull out FFC eDP from the I/F BD



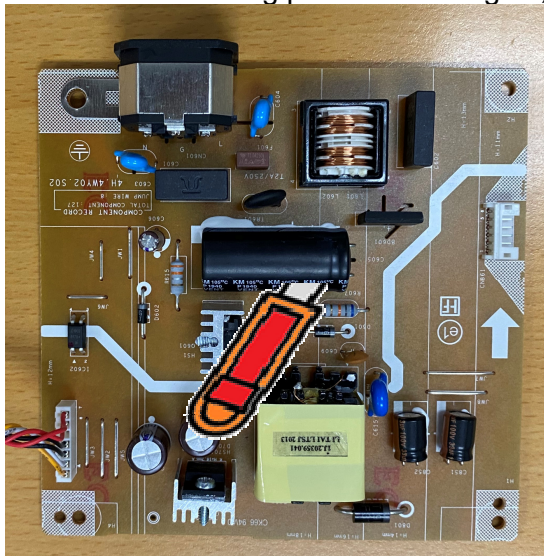
S20 Remove electrolyte capacitors (red mark) from printed circuit boards



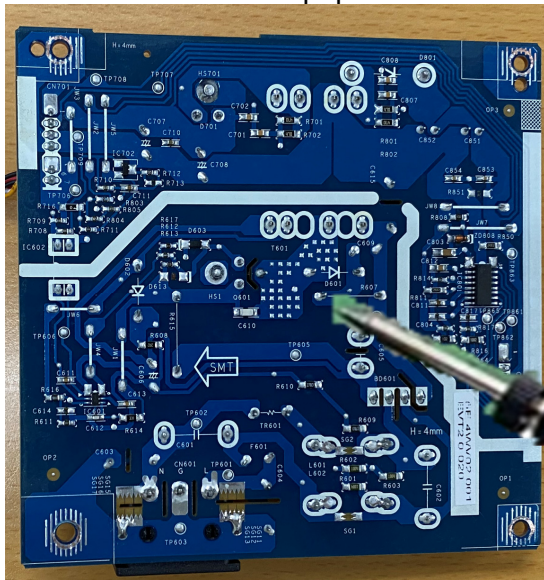
S20-1 Cut the glue between bulk cap. and PCB with a knife



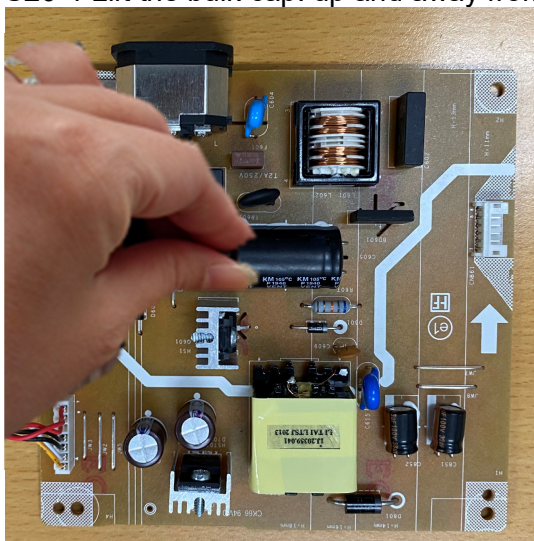
S20-2 Ensure cutting path within the glue, don't touch bulk cap. or PCB



S20-3 Take out bulk cap. pin solder with soldering iron and absorber



S20-4 Lift the bulk cap. up and away from the PCB



2. Product material information

The following substances, preparations, or components should be disposed of or recovered separately from other WEEE in compliance with Article 4 of EU Council Directive 75/442/EEC.

Capacitors / condensers (containing PCB/PCT)	No used
Mercury containing components	No used
Batteries	No used
Printed circuit boards (with a surface greater than 10 square cm)	Product has printed circuit boards (with a surface greater than 10 square cm)
Component contain toner, ink and liquids	No used
Plastic containing BFR	No used
Component and waste contain asbestos	No used
CRT	No used
Component contain CFC, HCFC, HFC and HC	No used
Gas discharge lamps	No used
LCD display > 100 cm ²	Product has an LCD greater than 100 cm ²
External electric cable	Product has external cables
Component contain refractory ceramic fibers	No used
Component contain radio-active substances	No used
Electrolyte capacitors (height > 25mm, diameter > 25mm)	Product has electrolyte capacitors (height >25mm, diameter > 25mm)

3. Tools Required

List the type and size of the tools that would typically can be used to disassemble the product to a point where components and materials requiring selective treatment can be removed.

Tool Description:

- Screwdriver
- Scraper Bar
- Penknife
- Soldering iron and absorber