
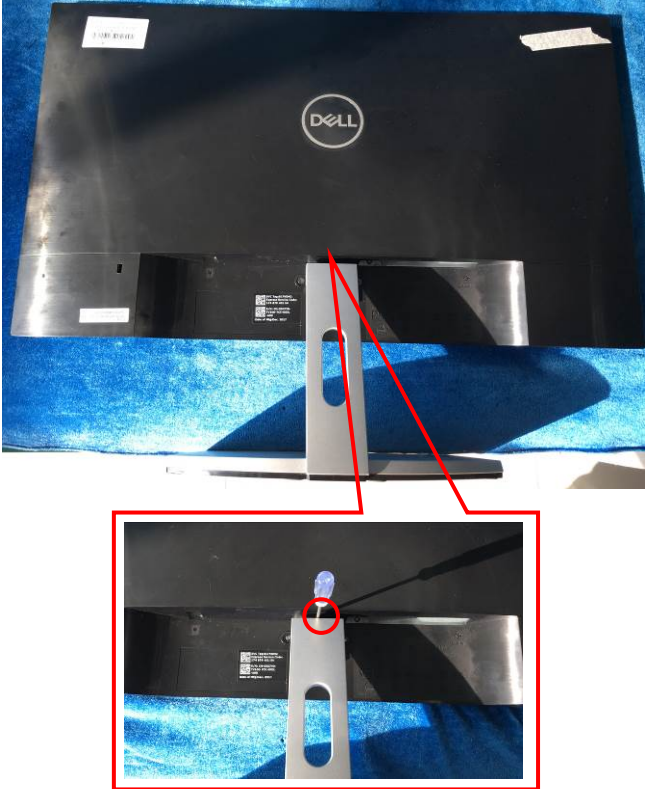
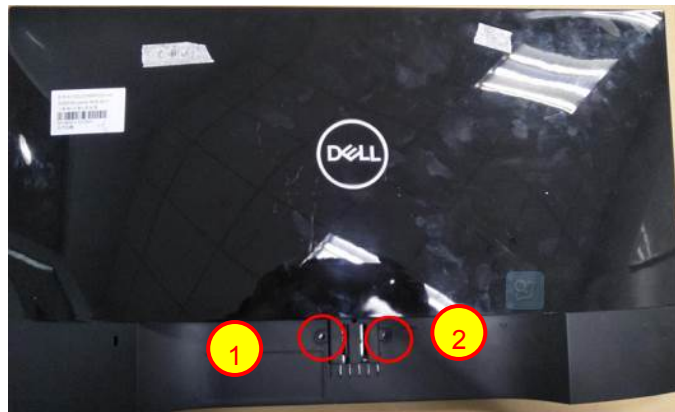


## 1. Disassembly Procedures:

Step	Figure	Remark
<b>S1.Before disassemble</b>		Turn off power, Unplug external cables from product
<b>S2.Remove the STAND-BASE ASS'Y</b>		To remove the stand: 1. Press and hold the stand release button. 2. Lift the stand up and away from the monitor.  Note: To prevent scratches on the LCD screen while removing the stand, ensure that the monitor is placed on a soft, clean surface.

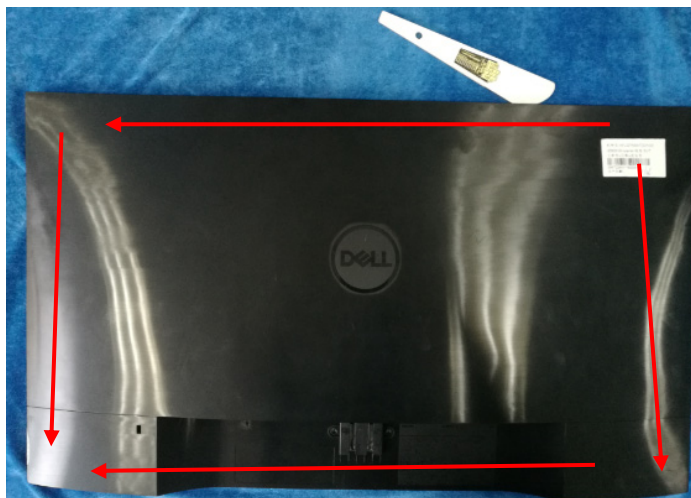


Use a Philips-head screwdriver to remove 2 screws for unlocking mechanisms.

(No. 1~2 screw size=M3x3;

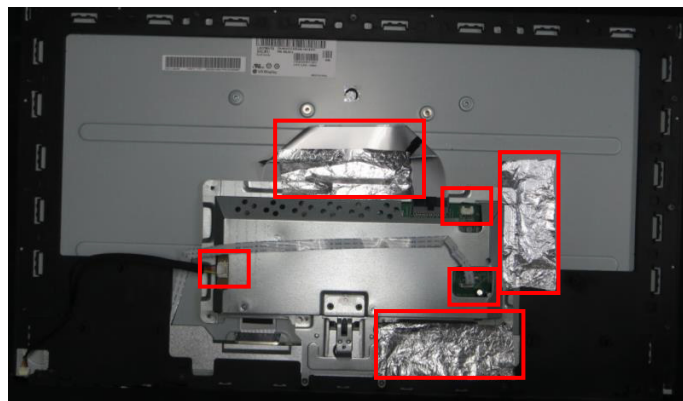
Torque=6±1kgf.cm)

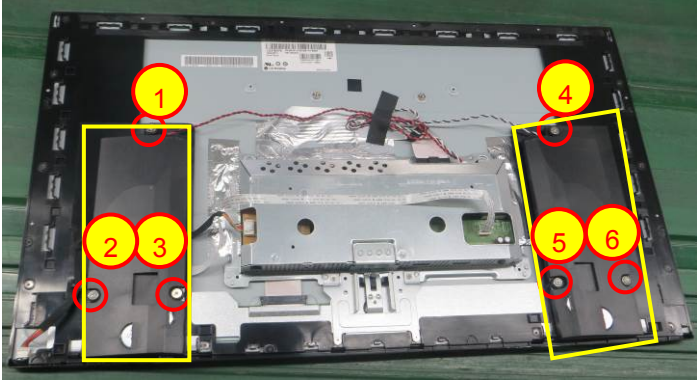
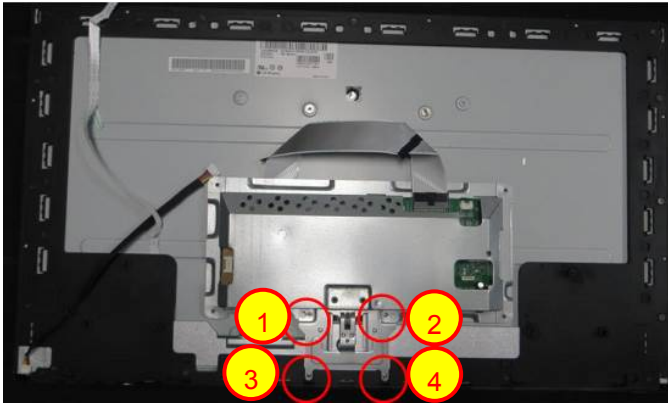
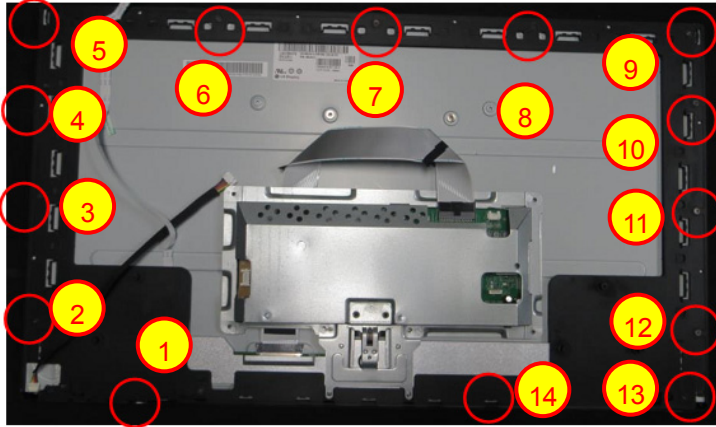
### S3.Remove the Rear Cover



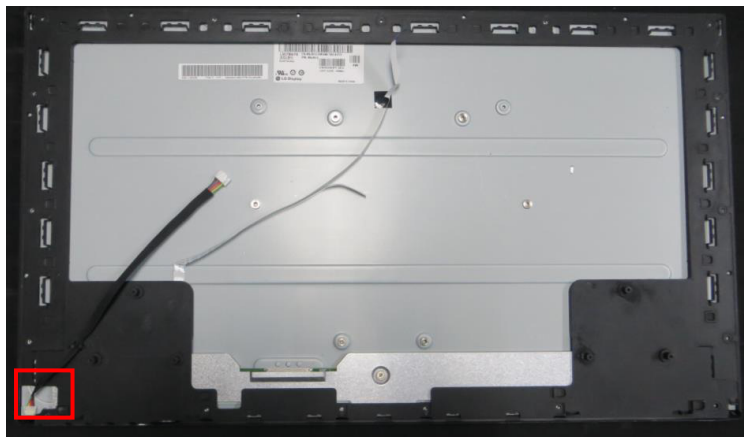
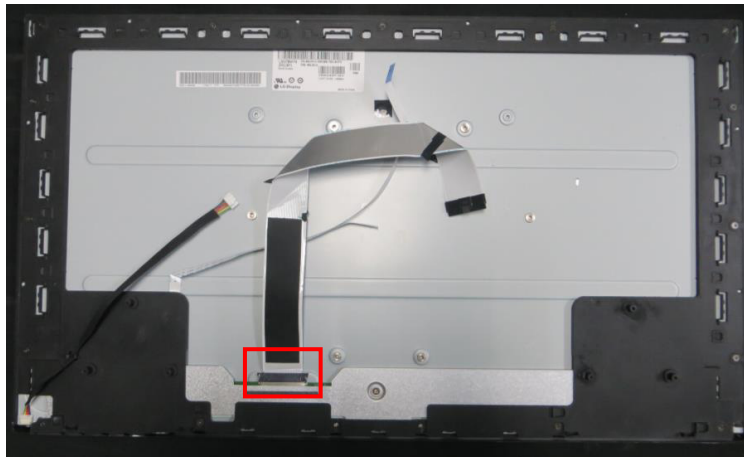
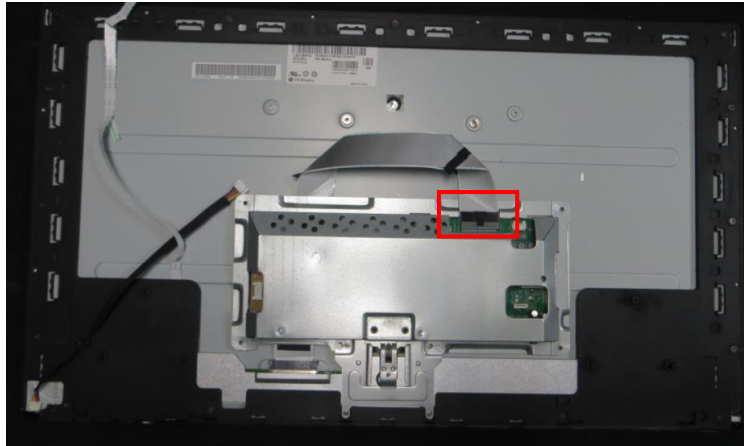
Use Penknife to separate the bezel and rear cover follow the arrows in sequence, then you can take out rear cover.

### S4.Disconnect the pins and remove the tapes



<p><b>S5.Remove the speaker</b></p>		<p>Use a Philips-head screwdriver to remove 6 screws for remove speaker.  (No.1~6 screw size=M3x6;  Torque=6±1kgf.cm)  Only for S2719H model</p>
<p><b>S6.Remove the mainframe</b></p>		<p>Use a Philips-head screwdriver to remove 4 screws for remove mainframe  (No.1~4 screw size=P3x4;  Torque= 3±0.5kgf.cm)</p>
<p><b>S7.Remove the middle frame</b></p>		<p>Use a Philips-head screwdriver to remove 14 screws for remove middle frame  (No.1~14 screw size=M3x3;  Torque=3±0.5kgf.cm)</p>

**S8. Remove the panel FFC cable and the converter board to panel cable**



**S9. The panel**





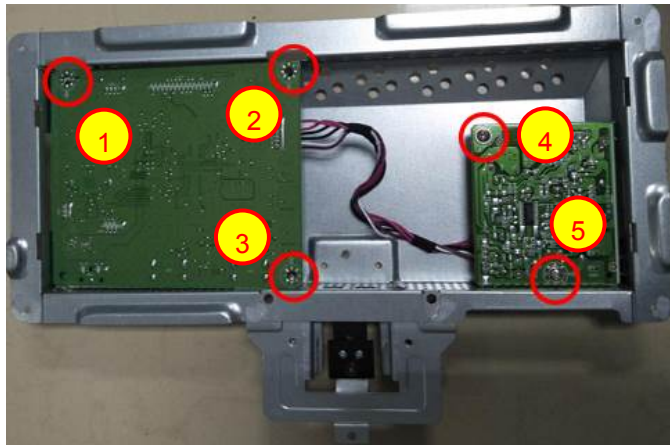
S10.Remove the  
Key Board



S11.The Middle  
frame

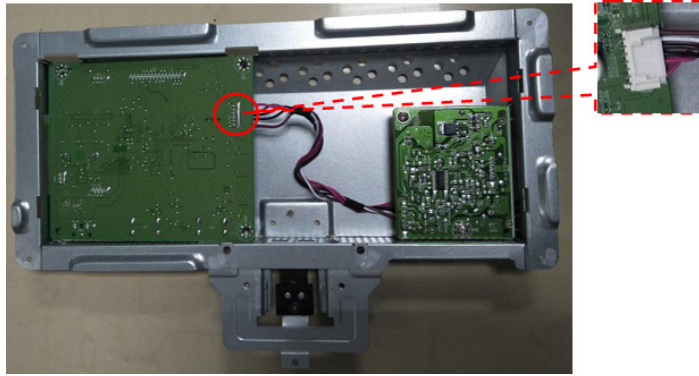


S12.Remove main  
board and  
converter board

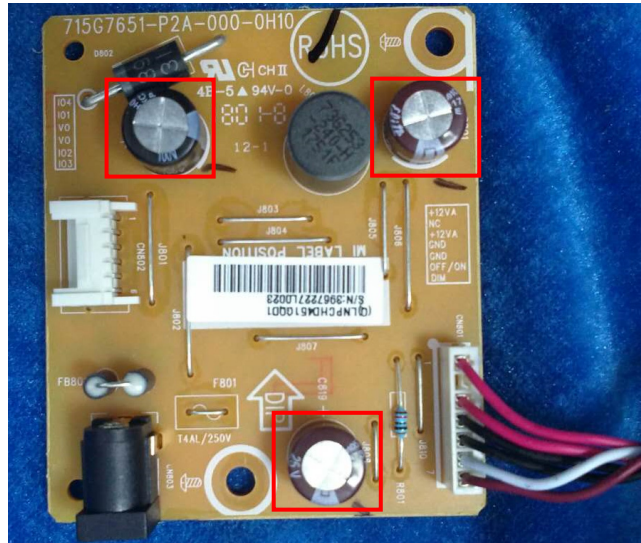


Use a Philips-head  
screwdriver to remove 5  
screws for remove main  
board and converter  
board

(No.1~5 screw  
size=D3x6;  
Torque=6±1kgf.cm)

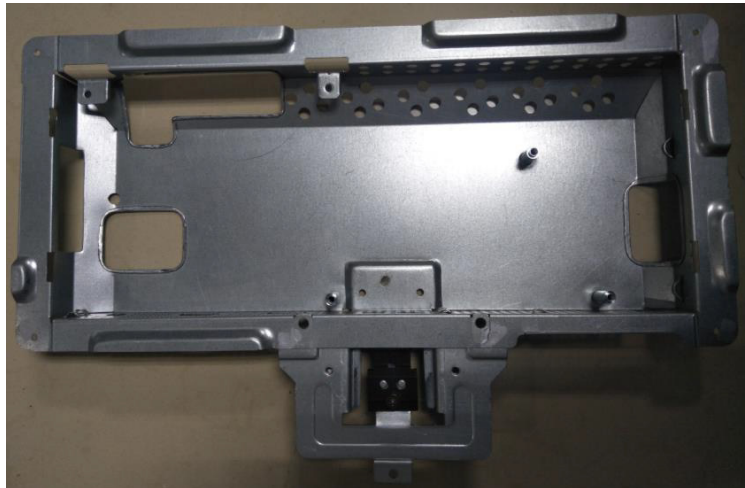


**S13. The Converter Board**



electrolyte capacitors  
(height < 25mm,  
diameter < 25mm)

**S14. The Main Frame**



## 2. Product material information

The following substances, preparations, or components should be disposed of or recovered separately from other WEEE in compliance with Article 4 of EU Council Directive 75/442/EEC.

Capacitors / condensers (containing PCB/PCT)	No used
Mercury containing components	No used
Batteries	No used
Printed circuit boards (with a surface greater than 10 square cm)	Product has printed circuit boards (with a surface greater than 10 square cm)
Component contain toner, ink and liquids	No used
Plastic containing BFR	The DC cable of power adapter contain BFR
Component and waste contain asbestos	No used
CRT	No used
Component contain CFC, HCFC, HFC and HC	No used
Gas discharge lamps	No used
LCD display > 100 cm <sup>2</sup>	Product has an LCD greater than 100 cm <sup>2</sup>
External electric cable	Product has external cables
Component contain refractory ceramic fibers	No used
Component contain radio-active substances	No used
Electrolyte capacitors (height > 25mm, diameter > 25mm)	The power adapter has electrolyte capacitors (height > 25mm, diameter > 25mm)

## 3. Tools Required

List the type and size of the tools that would typically can be used to disassemble the product to a point where components and materials requiring selective treatment can be removed.

Tool Description:

- Phillip head Screwdriver
- Penknife
- Soldering iron and absorber