
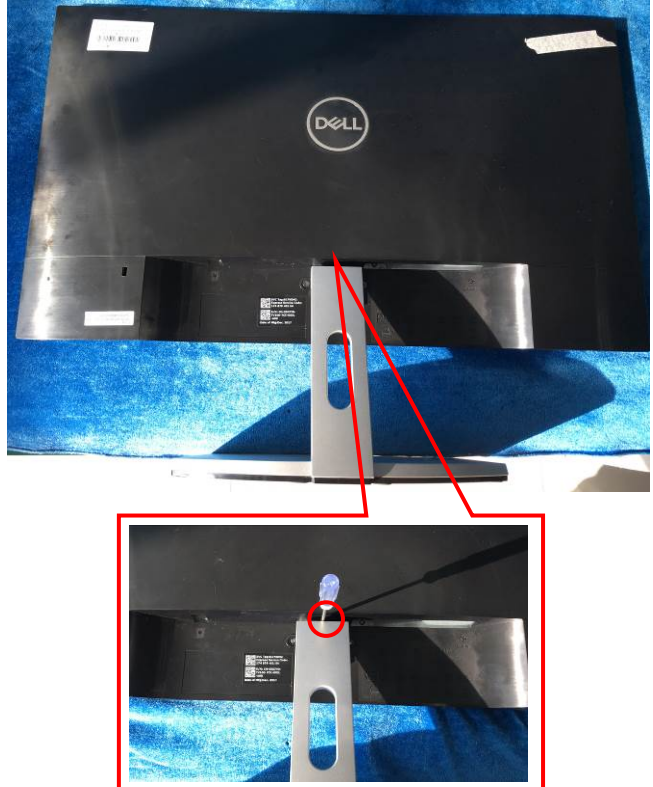
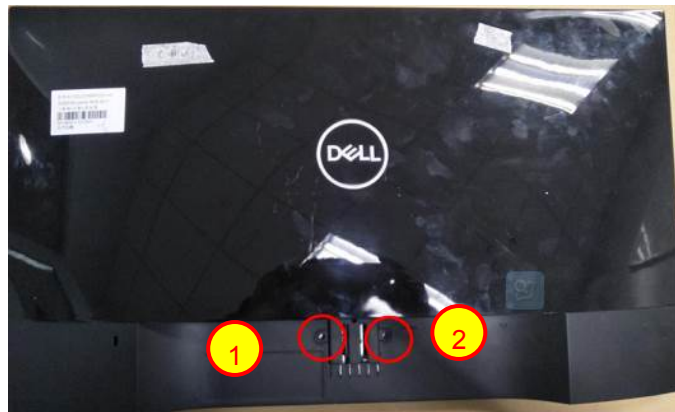
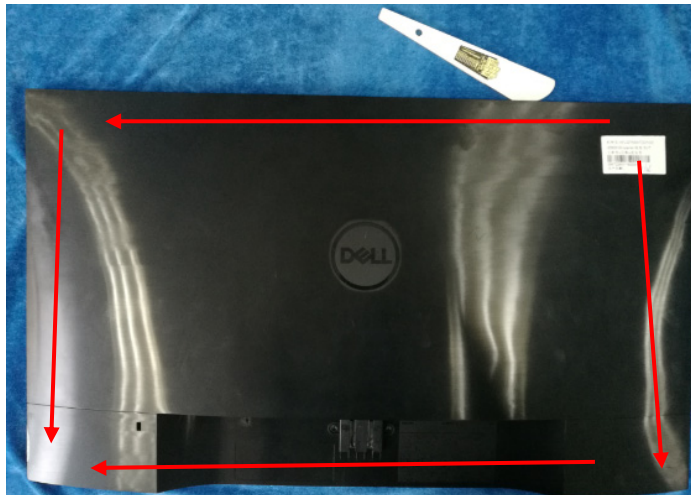


1. Disassembly Procedures:

| Step | Figure | Remark |
|---------------------------------------|---|--|
| S1.Before disassemble |  | Turn off power, Unplug external cables from product |
| S2.Remove the STAND-BASE ASS'Y |  | To remove the stand: 1. Press and hold the stand release button. 2. Lift the stand up and away from the monitor. Note: To prevent scratches on the LCD screen while removing the stand, ensure that the monitor is placed on a soft, clean surface. |



**S3.Remove the
Rear Cover**



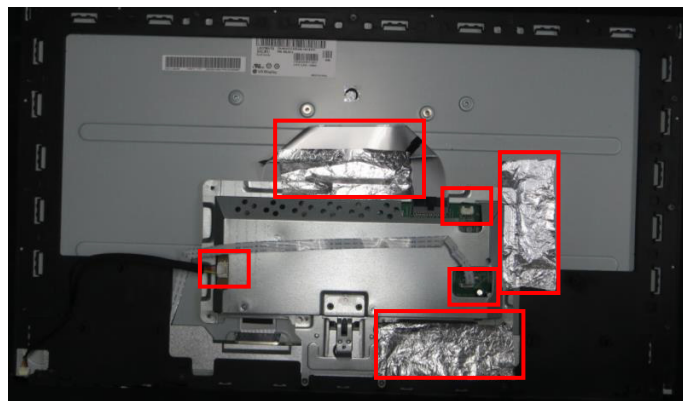
Use a Philips-head screwdriver to remove 2 screws for unlocking mechanisms.

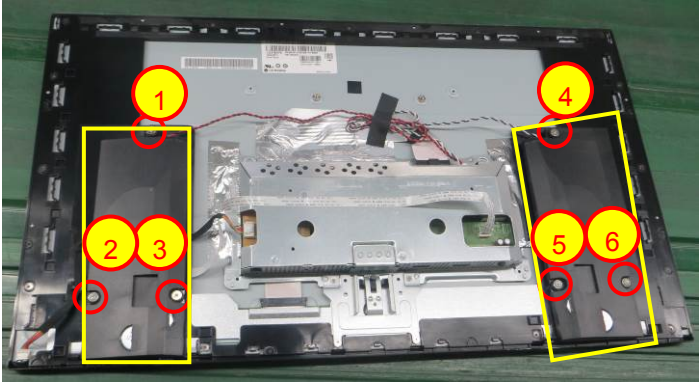
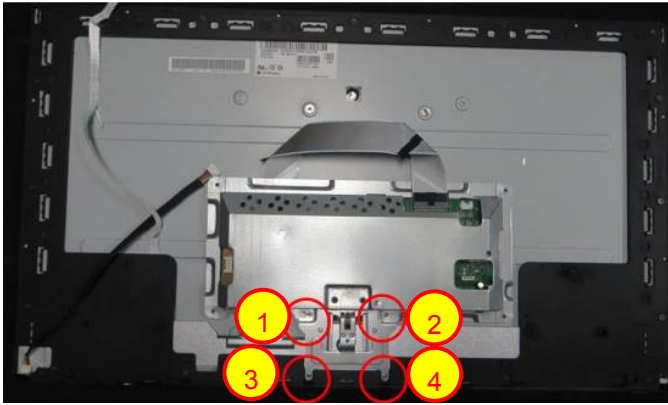
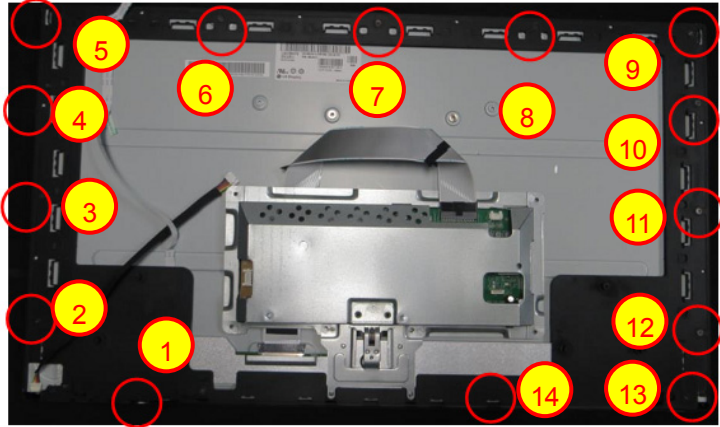
(No.1~2 screw size=M3x3;

Torque=6±1kgf.cm)

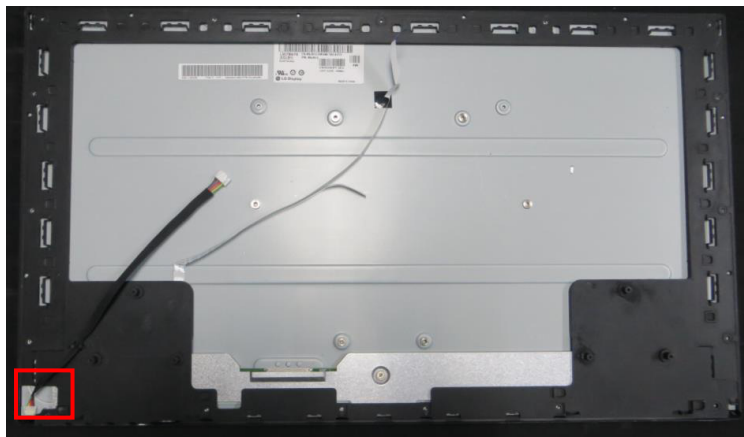
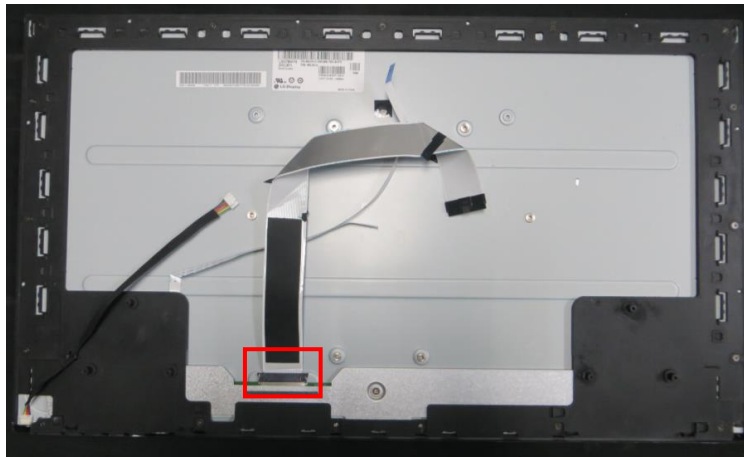
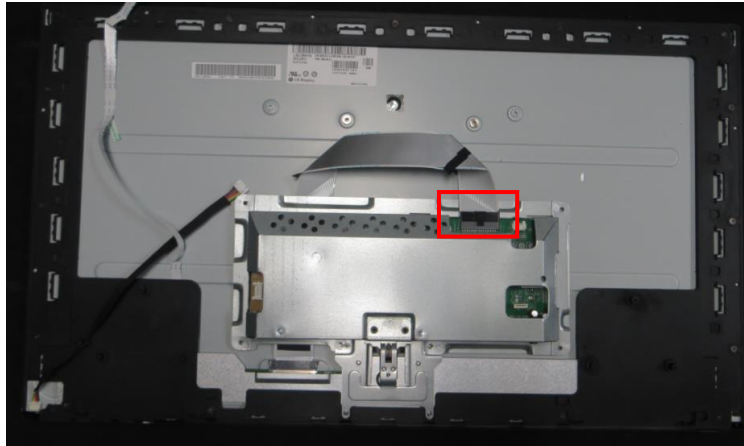
Use Penknife to separate the bezel and rear cover follow the arrows in sequence, then you can take out rear cover.

**S4.Disconnect the
pins and remove
the tapes**



| | | |
|--|--|--|
| <p>S5.Remove the speaker</p> |  | <p>Use a Philips-head screwdriver to remove 6 screws for remove speaker. (No.1~6 screw size=M3x6; Torque=6±1kgf.cm) Only for S2719H model</p> |
| <p>S6.Remove the mainframe</p> |  | <p>Use a Philips-head screwdriver to remove 4 screws for remove mainframe (No.1~4 screw size=P3x4; Torque= 3±0.5kgf.cm)</p> |
| <p>S7.Remove the middle frame</p> |  | <p>Use a Philips-head screwdriver to remove 14 screws for remove middle frame (No.1~14 screw size=M3x3; Torque=3±0.5kgf.cm)</p> |

S8. Remove the panel FFC cable and the converter board to panel cable



S9. The panel



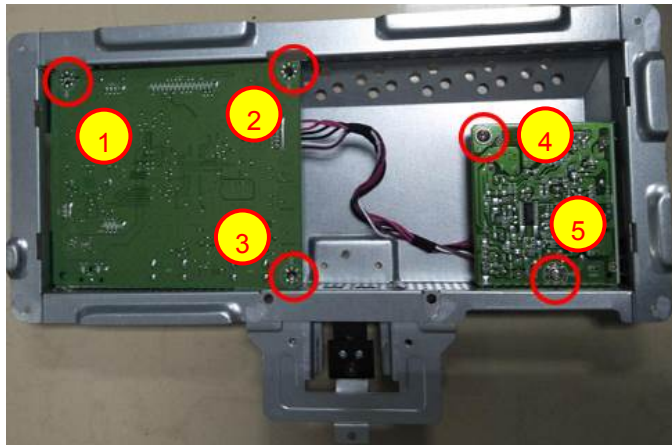
S10.Remove the
Key Board



S11.The Middle
frame

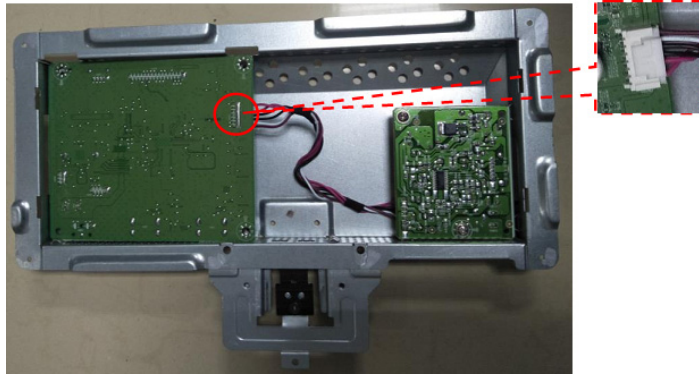


S12.Remove main
board and
converter board

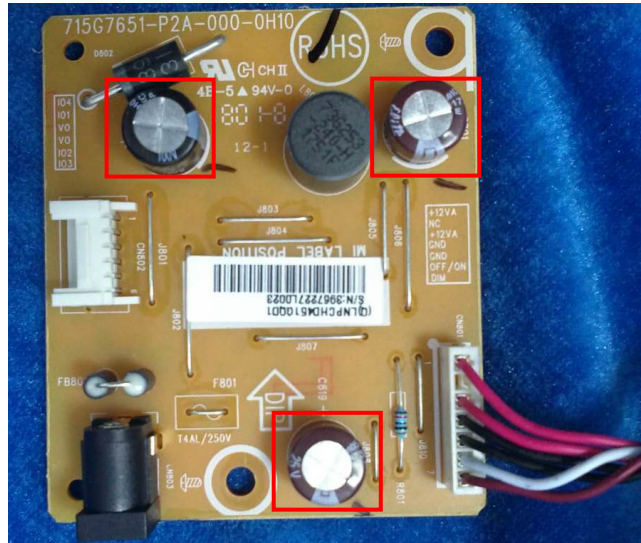


Use a Philips-head
screwdriver to remove 5
screws for remove main
board and converter
board

(No.1~5 screw
size=D3x6;
Torque=6±1kgf.cm)

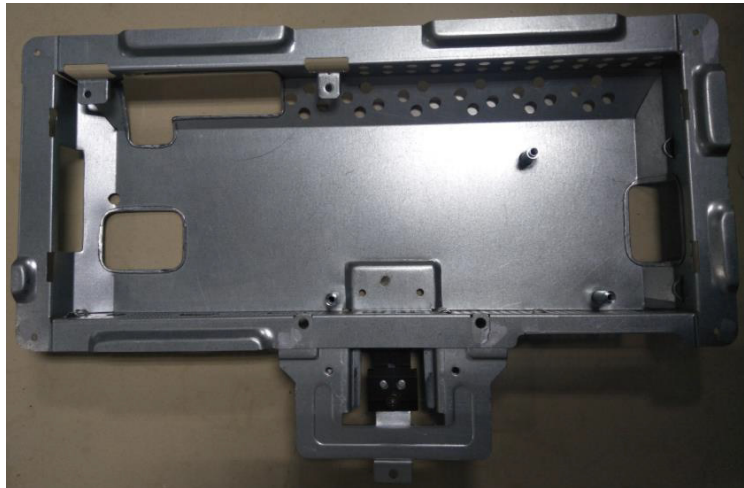


S13. The Converter Board



electrolyte capacitors
(height < 25mm,
diameter < 25mm)

S14. The Main Frame



2. Product material information

The following substances, preparations, or components should be disposed of or recovered separately from other WEEE in compliance with Article 4 of EU Council Directive 75/442/EEC.

| | |
|---|---|
| Capacitors / condensers (containing PCB/PCT) | No used |
| Mercury containing components | No used |
| Batteries | No used |
| Printed circuit boards (with a surface greater than 10 square cm) | Product has printed circuit boards (with a surface greater than 10 square cm) |
| Component contain toner, ink and liquids | No used |
| Plastic containing BFR | The DC cable of power adapter contain BFR |
| Component and waste contain asbestos | No used |
| CRT | No used |
| Component contain CFC, HCFC, HFC and HC | No used |
| Gas discharge lamps | No used |
| LCD display > 100 cm ² | Product has an LCD greater than 100 cm ² |
| External electric cable | Product has external cables |
| Component contain refractory ceramic fibers | No used |
| Component contain radio-active substances | No used |
| Electrolyte capacitors (height > 25mm, diameter > 25mm) | The power adapter has electrolyte capacitors (height > 25mm, diameter > 25mm) |

3. Tools Required

List the type and size of the tools that would typically can be used to disassemble the product to a point where components and materials requiring selective treatment can be removed.

Tool Description:

- Phillip head Screwdriver
- Penknife
- Soldering iron and absorber