

1. Important Safety Notice

Product Announcement:

This product is certificated to meet RoHS Directive and Lead-Free produced definition. Using approved critical components only is recommended when the situation to replace defective parts. Vender assumes no liability express or implied, arising out of any unauthorized modification of design or replacing non-RoHS parts. Service providers assume all liability.

Qualified Repairability:

Proper service and repair is important to the safe, reliable operation of all series products. The service providers recommended by vender should be aware of notices listed in this service manual in order to minimize the risk of personal injury when perform service procedures. Furthermore, the possible existed improper repairing method may damage equipment or products. It is recommended that service engineers should have repairing knowledge, experience, as well as appropriate product training per new model before performing the service procedures.

NOTICE:

! To avoid electrical shocks, the products should be connected to an authorized power cord, and turn off the master power switch each time before removing the AC power cord.

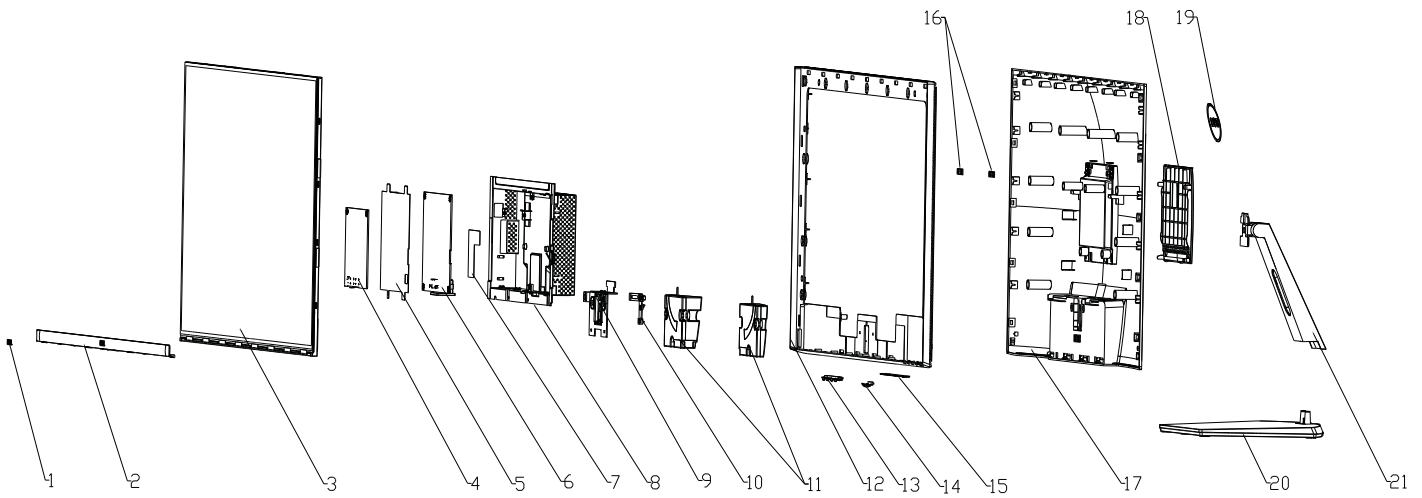
! To prevent the product away from water or expose in extremely high humidity environment.

! To ensure the continued reliability of this product, use only original manufacturer's specified parts.

! To ensure following safety repairing behavior, put the replaced part on the components side of PWBA, not solder side.

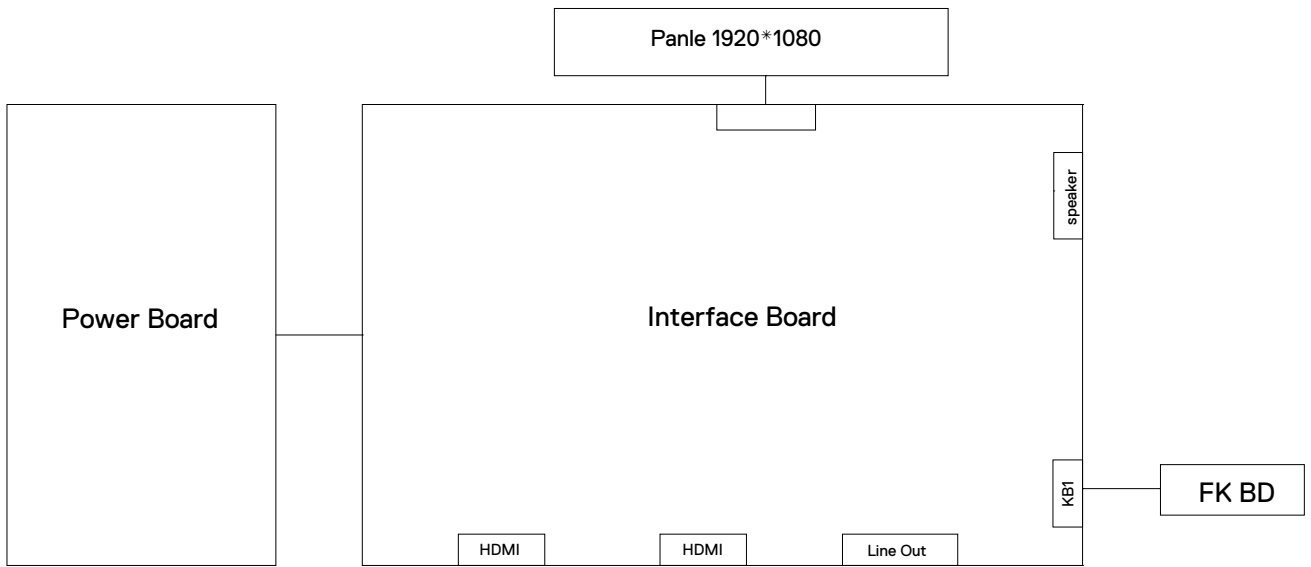
- ! To ensure using a proper screwdriver, follow the torque and force listed in assembly and disassembly procedures to unscrew screws.
- ! Using Lead-Free solder to well mounted the parts.
- ! The fusion point of Lead-Free solder requested in the degree of 220°C.

2. Exploded view diagram with list of items



ITEM	PART NAME	QUANTITY
1	DELL Front logo	1
2	Front trim	1
3	Panel	1
4	Interface board	1
5	Power mylar	1
6	Power board	1
7	Chassis mylar	1
8	Main chassis	1
9	Hinge bracket	1
10	Quick release button	1
11	Speaker	2
12	Mid frame	1
13	OSE button	1
14	Power button	1
15	Function key board	1
16	Wallmount metal sheet	2
17	Back cover	1
18	VESA cover	1
19	DELL back logo	1
20	Riser	1
21	Base	1

3. Wiring Connectivity Diagram



4. Disassembly and Assembly Procedures

Necessary repair and test equipment:

1. Philips-head screwdriver

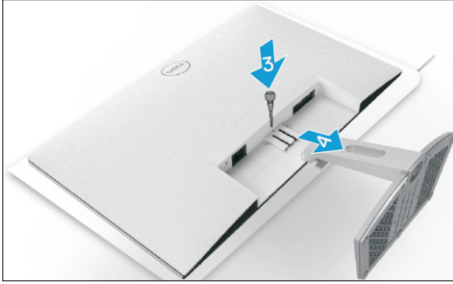
4.1 Disassembly Procedures:

Remove the monitor stand base:

S1

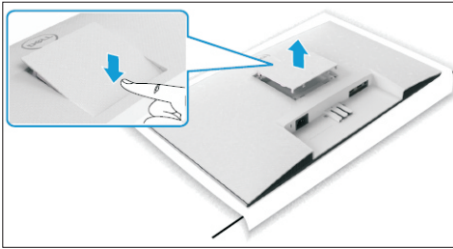
1. Place the monitor on a soft cloth or cushion.
2. Press the stand down to access to the release latch.
3. Use a long screwdriver to press the release latch.

While pressing the release latch, slide out the stand assembly from the monitor.



S2

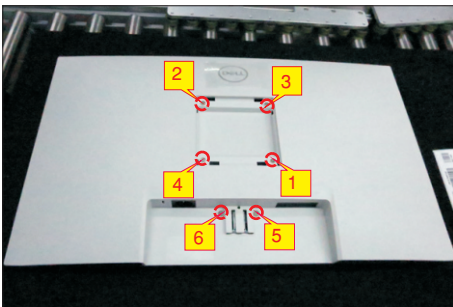
To remove the VESA cover: Press the dimple on the VESA cover to release it from the back of the display.



Use a Philips-head screwdriver to remove 6pcs screws for unlocking mechanisms.

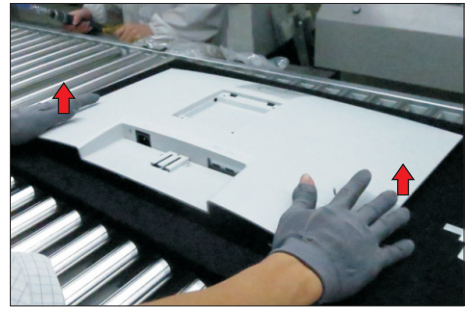
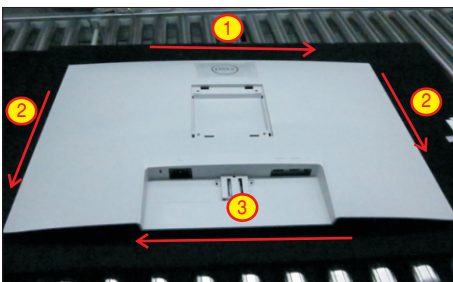
S3

(No.1~4 screw size=M4x11; Torque=7~8kgfxcM;
No.5~6 screw size=M4x8; Torque=7~8kgfxcM)



S4

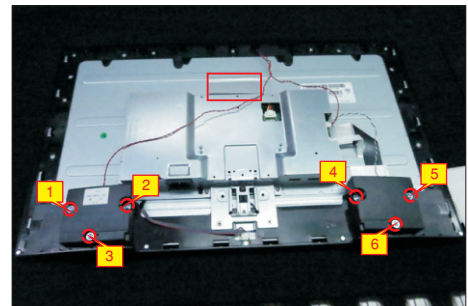
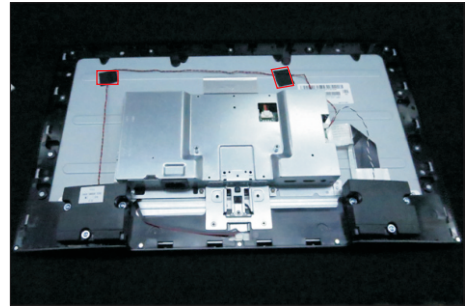
Use one hand to press the rear cover, then wedge your fingers between the rear cover and the middle bezel on the corners of the top left side to the right side of the monitor to release the rear cover.



S5

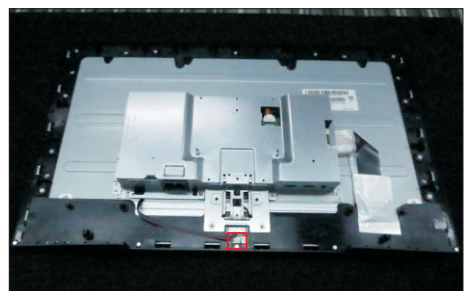
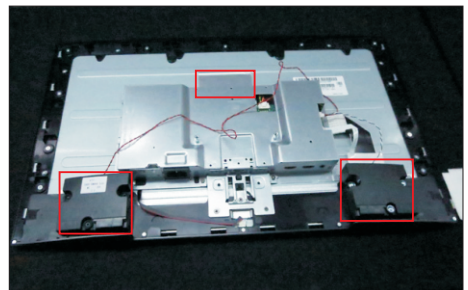
Tear off 2pcs acetate tapes and then disconnect the speaker cable away from the connector. Use a Philips-head screwdriver to remove 6pcs screws for unlocking the speakers with middle bezel.

(No.1~6 screw size=M3x8, Torque=5~6kgfxcM)



S6

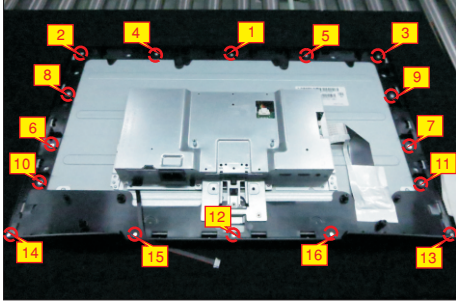
Tear off 1pcs aluminum foil and then remove the two speakers. Disconnect the panel lamp cable away from the connector of the panel module.



4. Disassembly and Assembly Procedures

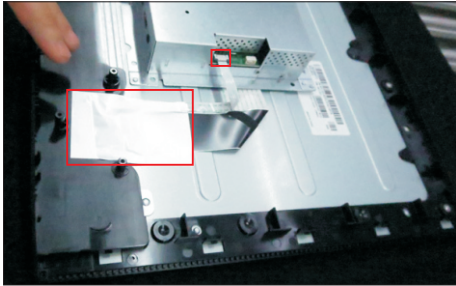
S7

Use a Philips-head screwdriver to remove 16pcs screws for unlocking the middle bezel.
(No.1~11 screw size=M3x4, Torque=3~4kgfxcM;
No.12~16 screw size=M2x3.3, Torque=1±0.2kgfxcM)



S8

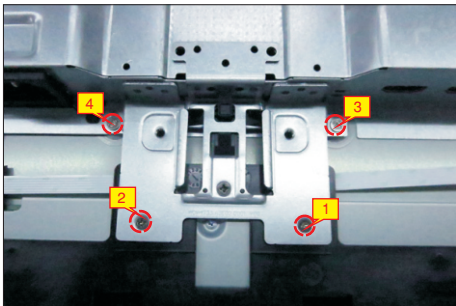
Tear off 1pcs aluminium foil, and then disconnect the function key cable away from the connector.



S9

Use a Philips-head screwdriver to remove 2pcs screws for unlocking the bracket with middle bezel, to remove 2pcs screws for unlocking the bracket with the panel module.

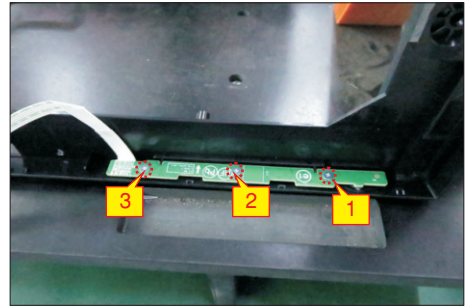
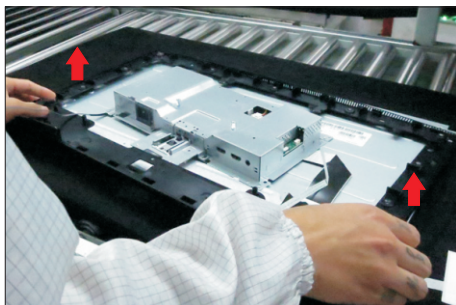
(No.1~2 screw size=M3x4, Torque=3~4kgfxcM;
No.3~4 screw size=M3x3.5, Torque=2~3kgfxcM)



S10

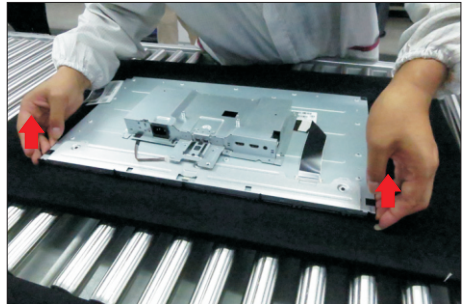
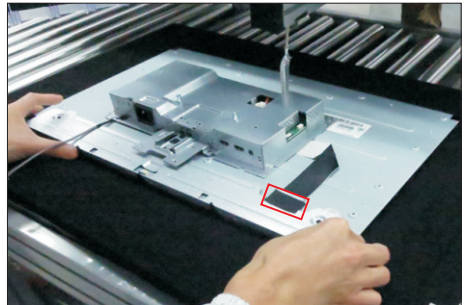
Take away the middle bezel. Use a Philips-head screwdriver to remove 3pcs screws for unlocking the function key board with the middle bezel, and then tear off the tapes for releasing the key cables.

(No.1~3 screw size=M2x2.4, Torque=0.8±0.2kgfxcM)



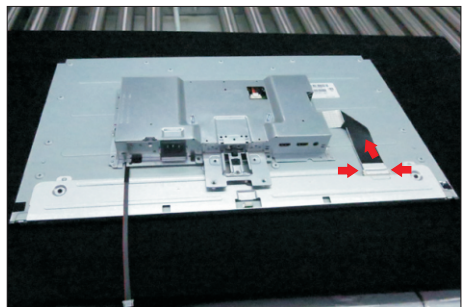
S11

Tear off the tape, then lift up the panel module with the bracket chassis for releasing the front bezel away from the panel module.



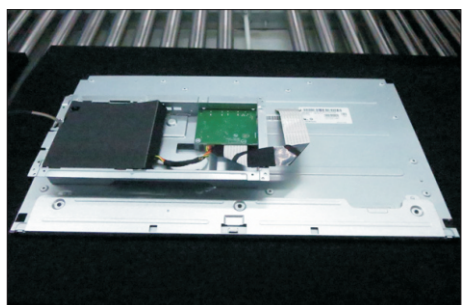
S12

Unplug the LVDS cable from the connector of the panel module by pushing the earing-locks.

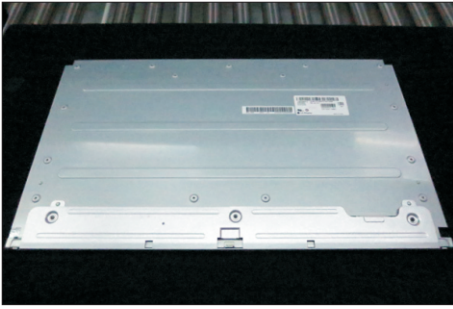


S13

Take away the bracket chassis module and then put the bracket chassis module on a protective cushion.

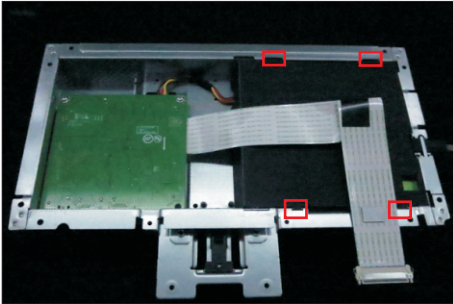


4. Disassembly and Assembly Procedures



S14

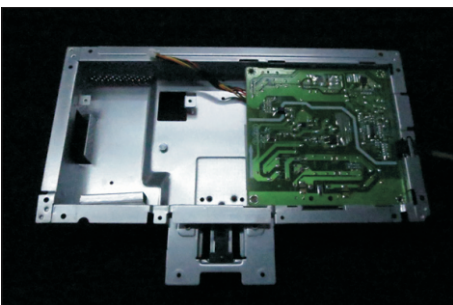
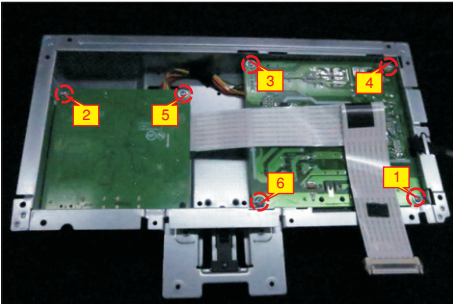
Remove the Mylar from the hooks of the bracket chassis module.



S15

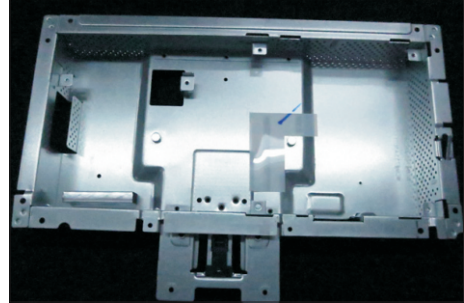
Use a Philips-head screwdriver to remove six screws for unlocking the circuit board, release all the cables from the hooks.

(No. 1~5 screw size=M3x7.5, Torque=6±0.5kgfxcn;
No. 6 screw size=M4x8, Torque=6±0.5kgfxcn)



S16

Remove the interface board and power board from the bracket chassis module carefully, and disconnect all the cables.

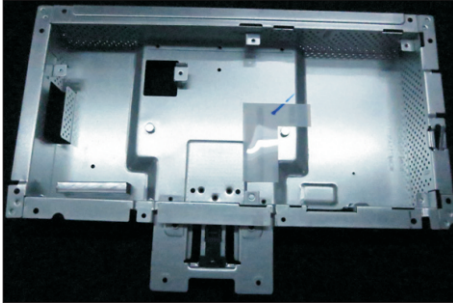


4. Disassembly and Assembly Procedures

4.2 Assembly Procedures:

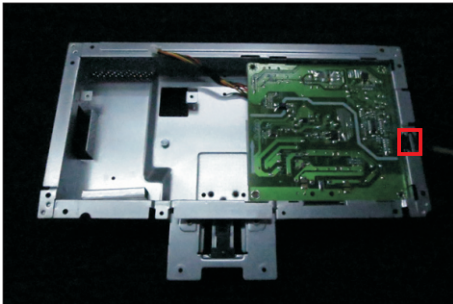
S1

Place a bracket chassis base on a protective cushion.



S2

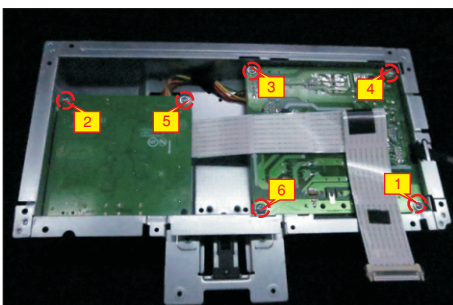
Turn over a power board and put the power board into the bracket chassis, locate the panel power cable into the hook of the bracket chassis.



S3

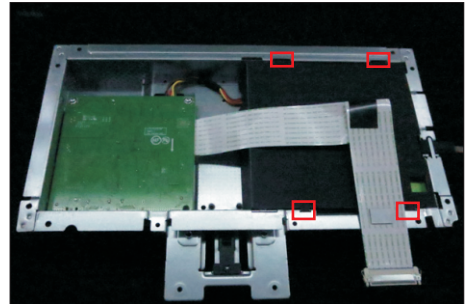
Take a interface board, connect a LVDS cable to the connector of the interface board, then connect the cable of the power board to the connector of the interface board. Turn over the interface board and locate it into the bracket. Use a Philips-head screwdriver to tighten six screws for locking the power board and interface board.

(No.1~5 screw size=M3x7.5, Torque=6±0.5kgfxcM;
No.6 screw size=M4x8, Torque=6±0.5kgfxcM)



S5

Take a mylar to insert the hooks of the bracket to cover the power board.



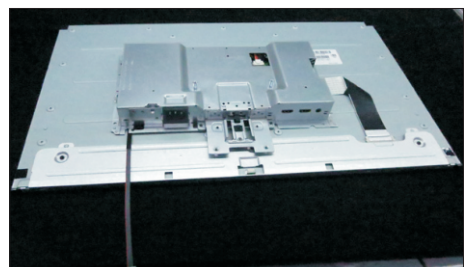
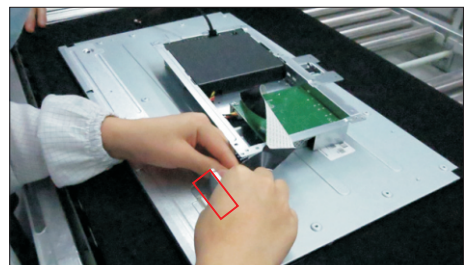
Panel preparation: Take out 1pcs panel module from the carton, then remove the protective film by tearing off the tapes, and then examine the panel surface according to inspection criteria. Turn over the panel, and then place screen faced down for later assembling.

S6



S7

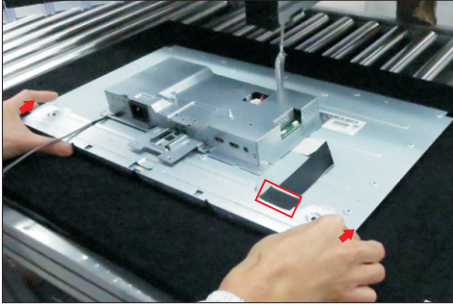
Move the bracket chassis close to the panel, then connect LVDS cable to the connector of the panel module. Turn over the bracket and put it on the back of panel module.



4. Disassembly and Assembly Procedures

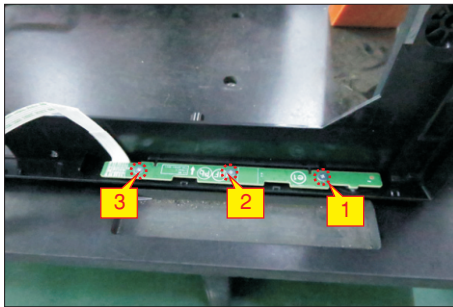
S8

Paste 1pcs tape to cover the LVDS connector. Take 1pcs front bezel, then lift up the panel with bracket and assemble the front bezel with the panel module.



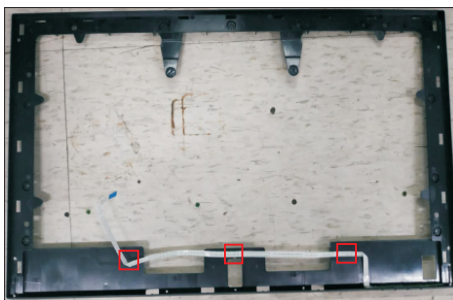
S9

Take a function key board and a middle bezel, then fix the middle bezel with a fixture, and locate the function keyboard into the hooks of the bezel. Use a Philips-head screwdriver to tighten 3pcs screws for locking the function key board with the middle bezel. (No.1~3 screw size=M2x2.4, Torque=0.8±0.2kgfxcM)



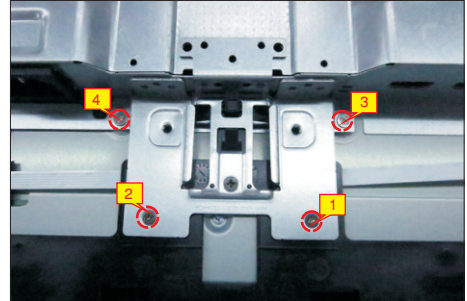
S10

Move the middle bezel with function key board close to the panel unit, tear off the papers of the tapes on the back of the key cable, and then fix the key cable on the bezel by 3pcs tapes, then assemble the middle bezel with the front bezel and panel module.



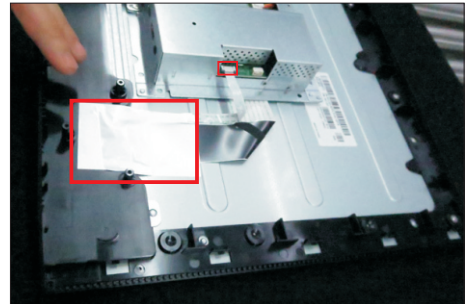
S11

Use a Philips-head screwdriver to tighten 2pcs screws for locking the bracket with middle bezel, to tighten 2pcs screws for locking the bracket with panel. (No.1~2 screw size=M3x4, Torque=3~4kgfxcM; No.3~4 screw size=M3x3.5, Torque=2~3kgfxcM)



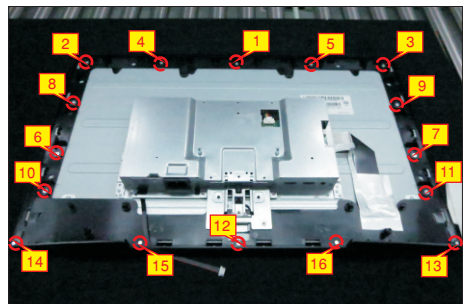
S12

Connect the function key cable to the connector of board, then paste 1pcs aluminum foil to cover the LVDS connector and key cable.



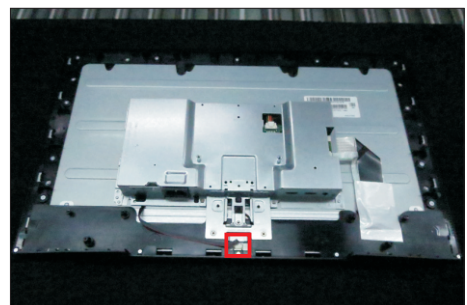
S13

Use a Philips-head screwdriver to lock 11pcs screws for locking the middle bezel with the panel module, then lock 5pcs screws for locking the middle bezel with front bezel. (No.1~11 screw size=M3x4, Torque=3~4kgfxcM; No.12~16 screw size=M2x3.3, Torque=1±0.2kgfxcM)



S14

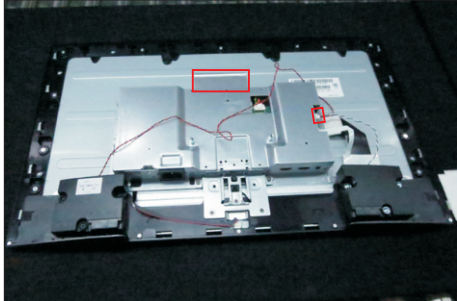
Connect the panel lamp cable to the connector of panel module.



4. Disassembly and Assembly Procedures

S15

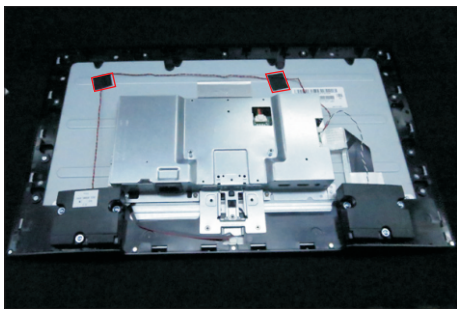
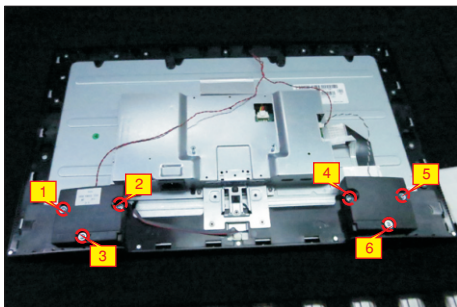
Take a pair of speakers to locate the probers of the middle bezel, then connect the speaker cable to the connector of the board. Paste 1pcs aluminum foil to fix the bracket on the specific position.



S16

Use a Philips-head screwdriver to tighten 6pcs screws for locking the speakers with middle bezel. Settle the cable and then fix the speaker's cables with 2pcs acetate tapes on the specific position as the picture below shown.

(No.1~6 screw size=M3x8, Torque=5~6kgfxcM)



S17

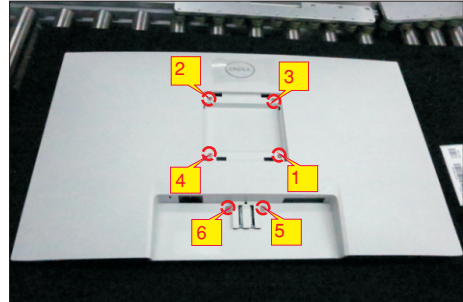
Take 1pcs rear cover, put down the rear cover and push the rear cover on the positions marked as the picture below shown for mechanisms engagement.



S18

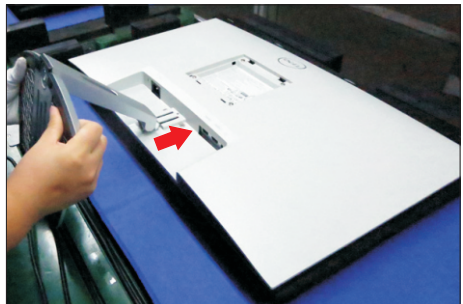
Use a Philips-head screwdriver to tighten 4pcs screws for locking rear cover with the assembled unit, to tighten 2pcs screws for locking the rear cover with bracket chassis module.

(No.1~4 screw size=M4x11; Torque=7~8kgfxcM;
No.5~6 screw size=M4x8; Torque=7~8kgfxcM)



S19

Stick 2pcs labels on the specific positions as the picture below shown. Take 1pcs stand riser and 1pcs stand base, assemble the stand base with stand riser, then rotate the screw clockwise to lock the stand base and stand riser. Insert the stand-riser into monitor groove until it snaps into its place.



S20

Lift up the monitor to checking the gap between the front bezel with panel module, then provide power supply and a video signal to the monitor, then turn on the monitor for functionality check.



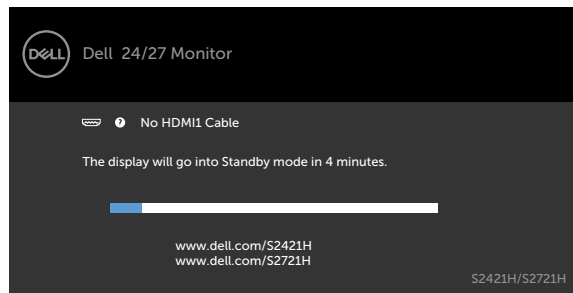
5. Trouble Shooting Instructions

Self-test

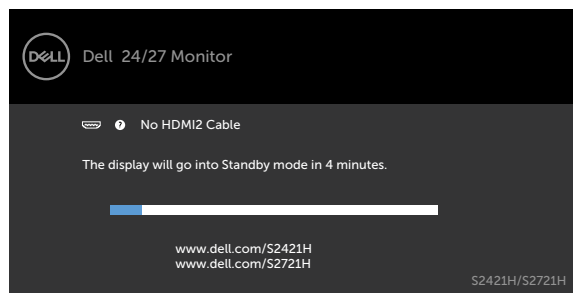
Your monitor provides a self-test feature that allows you to check whether your monitor is functioning properly. If your monitor and computer are properly connected but the monitor screen remains dark, run the monitor self-test by performing the following steps:

1. Turn off both your computer and the monitor.
2. Unplug the video cable from the back of the computer. To ensure proper Self-Test operation, remove all video cables from the back of computer.
3. Turn on the monitor.

The floating dialog box should appear on-screen (against a black background), if the monitor cannot sense a video signal and is working correctly. While in self-test mode, the power LED remains white. Also, depending upon the selected input, one of the dialogs shown below will continuously scroll through the screen.



or



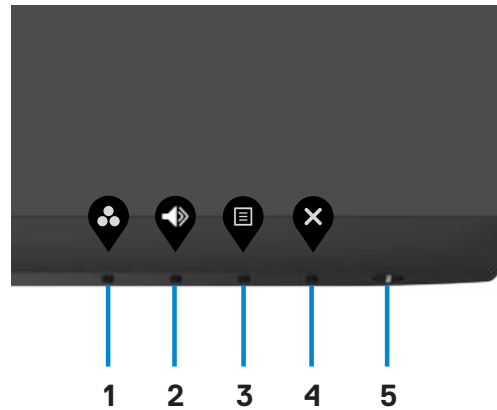
4. This box also appears during normal system operation if the video cable is disconnected or damaged.
5. Turn off your monitor and reconnect the video cable; then turn on both your computer and the monitor.

If your monitor screen remains blank after you use the previous procedure, check your video controller and computer, because your monitor is functioning properly.


5. Trouble Shooting Instructions

Built-in diagnostics

Your monitor has a built-in diagnostic tool that helps you determine if the screen abnormality you are experiencing is an inherent problem with your monitor, or with your computer and video card.



To run the built-in diagnostics:

1. Ensure that the screen is clean (no dust particles on the surface of the screen).
2. Press and hold **Button 4** for four seconds, a menu appears on the screen.
3. Select the built-in diagnostics  option. A gray screen appears.
4. Carefully inspect the screen for abnormalities.
5. Press Button 1 on the front panel again. The color of the screen changes to red.
6. Inspect the display for any abnormalities.
7. Repeat steps 5 to 6 to inspect the display when it changes to green, blue, black, white, and text screens.

The test is complete when the text screen appears. To exit, press Button 1 again.

If you do not detect any screen abnormalities during the built-in diagnostic tool, the monitor is functioning properly. Check the video card and computer.

5. Trouble Shooting Instructions

Common problems

The following table contains general information about common monitor problems you might encounter and the possible solutions:

Common symptoms	What you experience	Possible solutions
No video/ Power LED off	No picture	<ul style="list-style-type: none">· Ensure that the video cable connecting the monitor and the computer is properly connected and secure.· Verify that the power outlet is functioning properly using any other electrical equipment.· Ensure that the power button is depressed fully.· Ensure that the correct input source is selected in the Input Source menu.
No video/ Power LED on	No picture or no brightness	<ul style="list-style-type: none">· Increase brightness and contrast controls through OSD.· Perform monitor self-test feature check.· Check for bent or broken pins in the video cable connector.· Run the built-in diagnostics.· Ensure that the correct input source is selected in the Input Source menu.
Missing pixels	LCD screen has spots	<ul style="list-style-type: none">· Cycle power on-off.· Pixel that is permanently off is a natural defect that can occur in LCD technology.· For more information on Dell Monitor Quality and Pixel Policy, see Dell Support site at: https://www.dell.com/support/monitors.
Stuck-on pixels	LCD screen has bright spots	<ul style="list-style-type: none">· Cycle power On-Off.· Pixel that is permanently off is a natural defect that can occur in LCD technology.· For more information on Dell Monitor Quality and PixelPolicy, see Dell Support site at: https://www.dell.com/support/monitors.
Brightness problems	Picture too dim or too bright	<ul style="list-style-type: none">· Reset the monitor to factory settings.· Adjust brightness and contrast controls through OSD.
Safety related issues.	Visible signs of smoke or sparks	<ul style="list-style-type: none">· Do not perform any troubleshooting steps.· Contact Dell immediately.

5. Trouble Shooting Instructions

Common symptoms	What you experience	Possible solutions
Intermittent problems	Monitor malfunctions on & off	<ul style="list-style-type: none">· Ensure that the video cable connecting the monitor to the computer is connected properly and is secure.· Reset the monitor to factory settings.· Perform monitor self-test feature check to determine if the intermittent problem occurs in self-test mode.
Missing color	Picture missing color	<ul style="list-style-type: none">· Perform monitor self-test.· Ensure that the video cable connecting the monitor to the computer is connected properly and is secure.· Check for bent or broken pins in the video cable connector.
Wrong color	Picture color not good	<ul style="list-style-type: none">· Change the settings of the Preset Modes in the Color menu OSD depending on the application.· Adjust R/G/B value under Custom Color in Color menu OSD.· Change the Input Color Format to PC RGB or YPbPr in the Color menu OSD.· Run the built-in diagnostics.
Image retention from a static image left on the monitor for a long period of time	Faint shadow from the static image displayed appears on the screen	<ul style="list-style-type: none">· Set the screen to turn off after a few minutes of screen idle time. These can be adjusted in Windows Power Options or Mac Energy Saver setting.· Alternatively, use a dynamically changing screensaver.

5. Trouble Shooting Instructions

Product specific problems

Problem	What you experience	Possible solutions
Screen image is too small	Image is centered on screen, but does not fill entire viewing area	<ul style="list-style-type: none">· Check the Aspect Ratio setting in the Display menu OSD.· Reset the monitor to factory settings.
Cannot adjust the monitor with the buttons on the front panel	OSD does not appear on the screen	<ul style="list-style-type: none">· Turn off the monitor, unplug the monitor power cable, plug it back, and then turn on the monitor.
No Input Signal when user controls are pressed	No picture, the LED light is white	<ul style="list-style-type: none">· Check the signal source. Ensure the computer is not in the power saving mode by moving the mouse or pressing any key on the keyboard.· Check whether the signal cable is plugged in properly. Connect the signal cable again, if necessary.· Reset the computer or video player.
The picture does not fill the entire screen	The picture cannot fill the height or width of the screen	<ul style="list-style-type: none">· Due to different video formats (aspect ratio) of DVDs, the monitor may display in full screen.· Run the built-in diagnostics.