
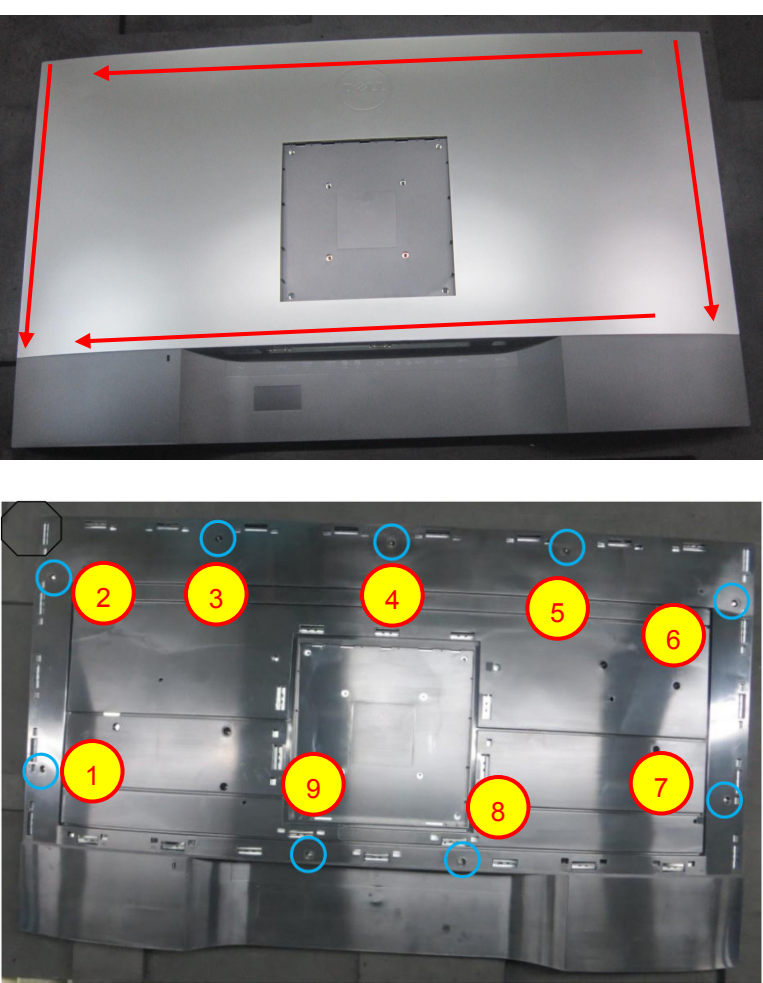
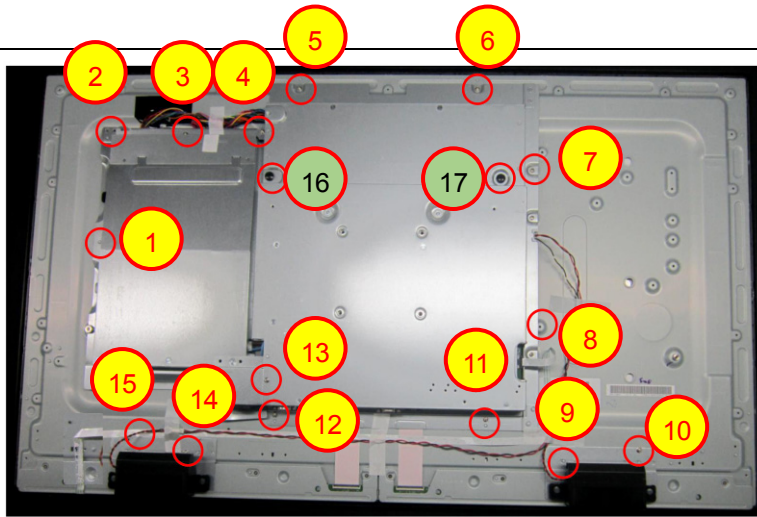


1. Disassembly Procedures:

Step	Figure	Remark
<p>S1. remove the stand</p>		<p>Turn off power, Unplug external cables from product, remove stand from produce.</p>
<p>S2.Remove the Rear Cover.</p>		<p>Use Penknife to separate the deco and rear cove follow the arrows in sequence.</p> <p>Use a Philips-head screwdriver to remove 9 screws for unlocking Rear cover (No.1~9 screw size=M3x6; Torque=6±1kgf.cm)</p>



Use a Philips-head screwdriver to remove 17 screws for unlocking Main board and Power board

(No.1~15 screw size=M3x6;

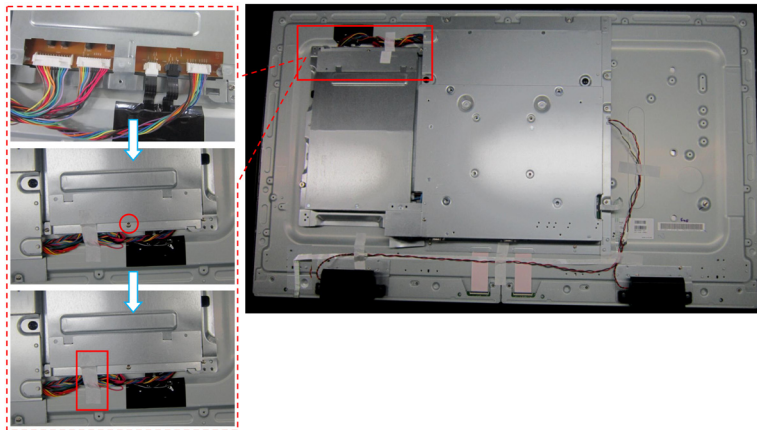
Torque=4±1kgf.cm

No.16~17 screw

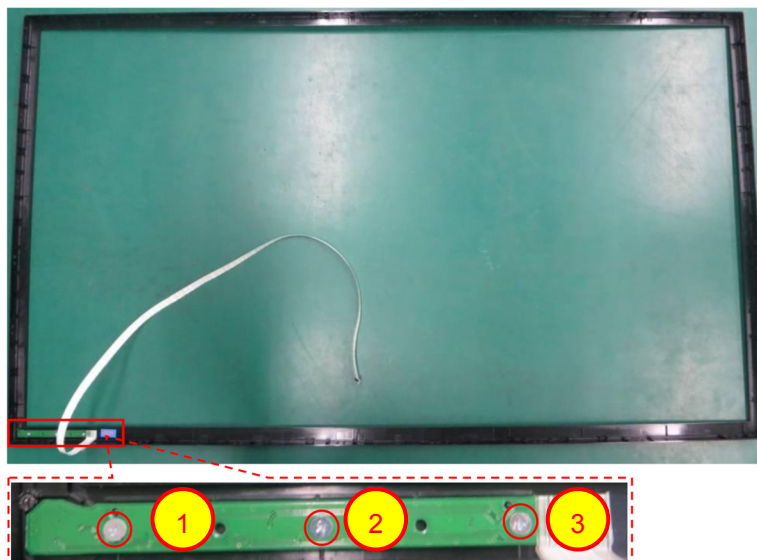
size=M6x10;

Torque=12±2kgf.cm)

S3.Remove the Cables and key board



Disconnect the pins.

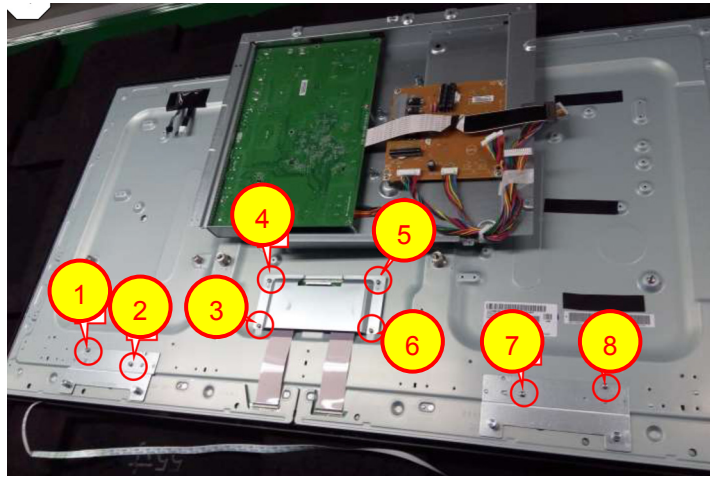


Use a Philips-head screwdriver to remove 3 screws for unlocking Key board

(No.1~3 screw size=Q2x2.3;

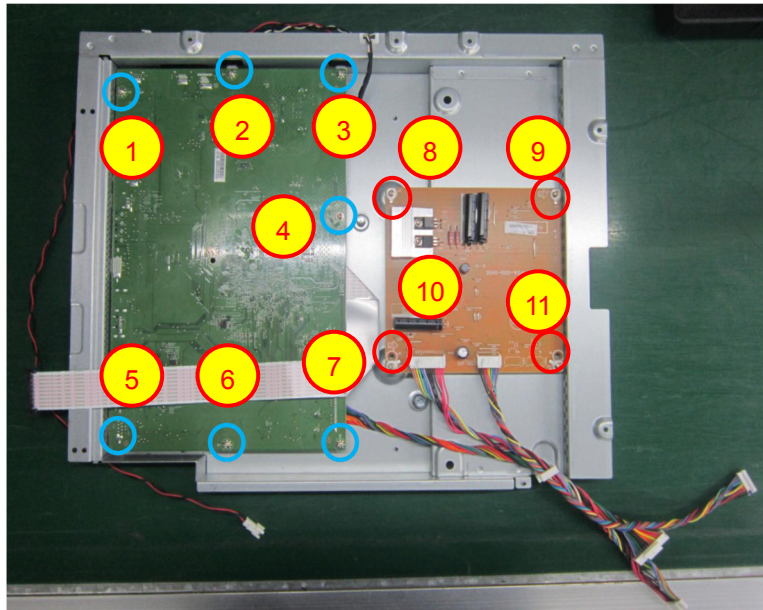
Torque=0.9±0.4kgf.cm)

S4.remove BKT

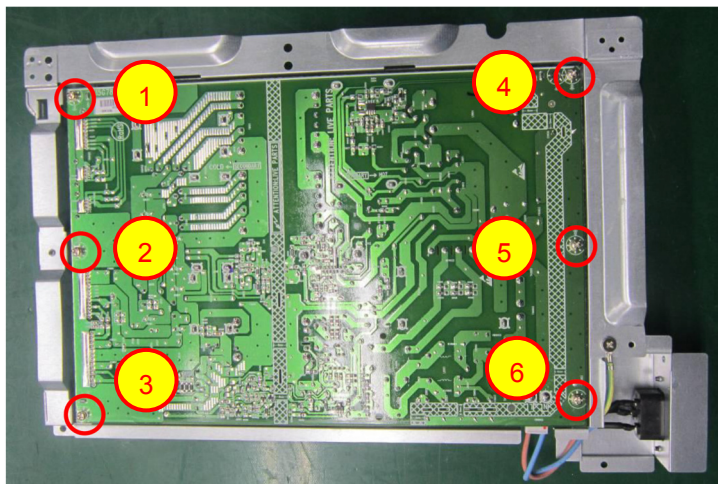


Use a Philips-head screwdriver to remove 8 screws for remove BKT
 (No.1~8 screw size=M3x6;
 Torque=4±1kgf.cm)

S5.Remove the Main and Power Board



Use a Philips-head screwdriver to remove 11 screws for Remove Main board and Inverter board
 (No.1~11 screw size=M3x6;
 Torque=6±1kgf.cm)

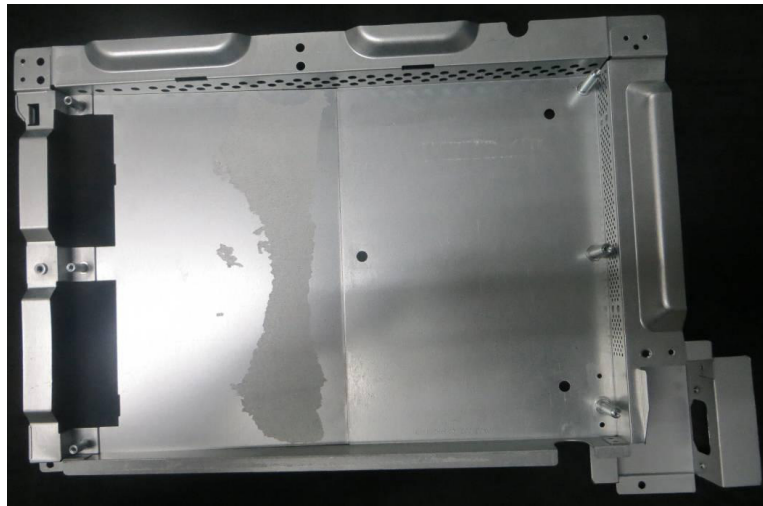


Use a Philips-head screwdriver to remove 6 screws for remove Power board
 (No.1~6 screw size=M3x6;
 Torque=6±1kgf.cm)



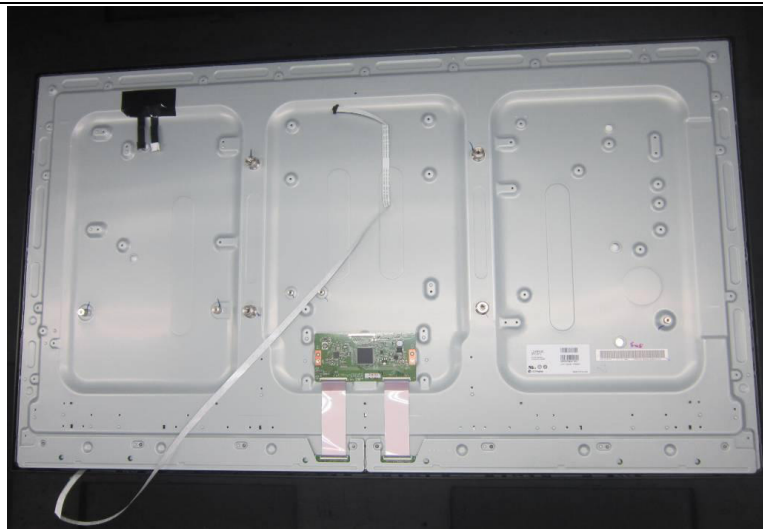
Use a hex screwdriver to remove 4 screws for unlocking mainboard
 (No.1~4 Hex screw Torque= 4.5 ± 0.5kgf.cm)

**S6.The
Mainframe**



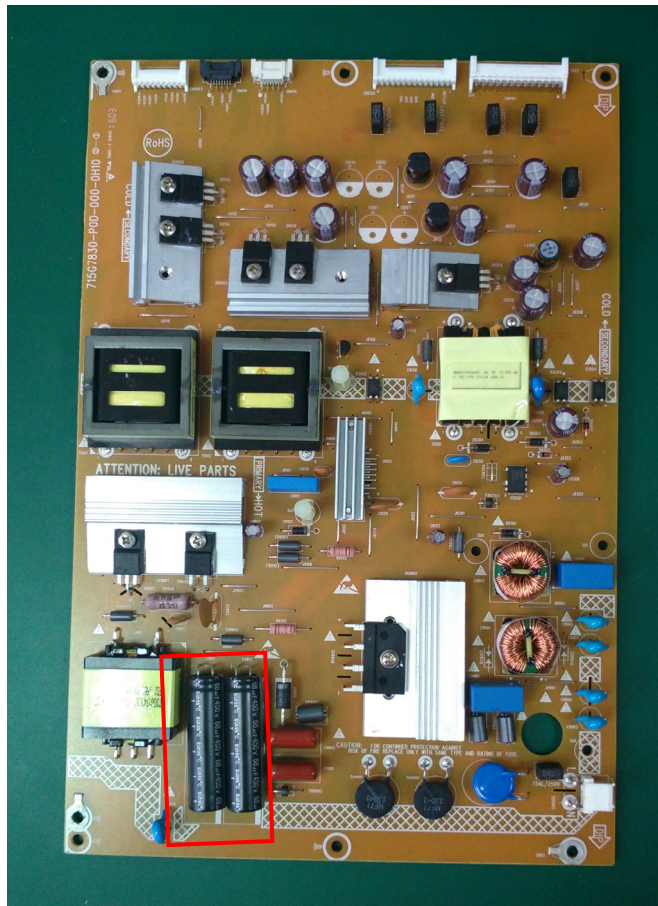
Mainframe

**S7.Remove
panel.**

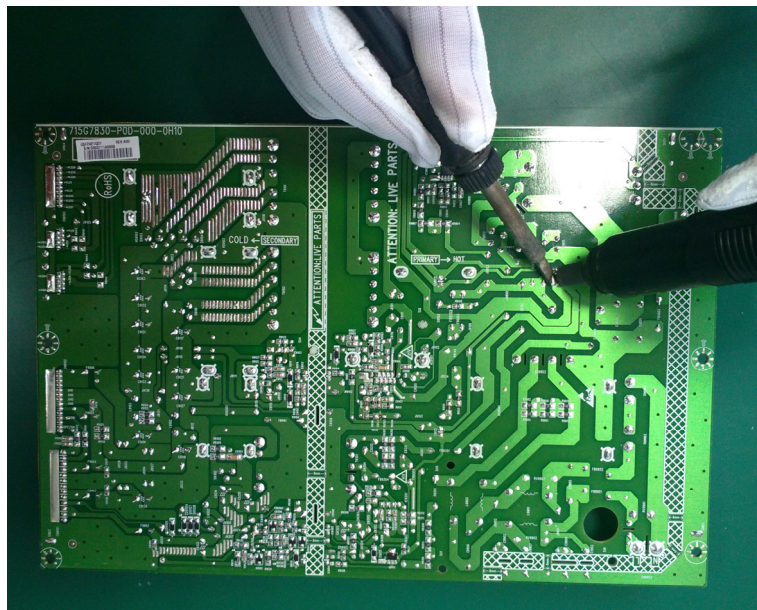


Panel

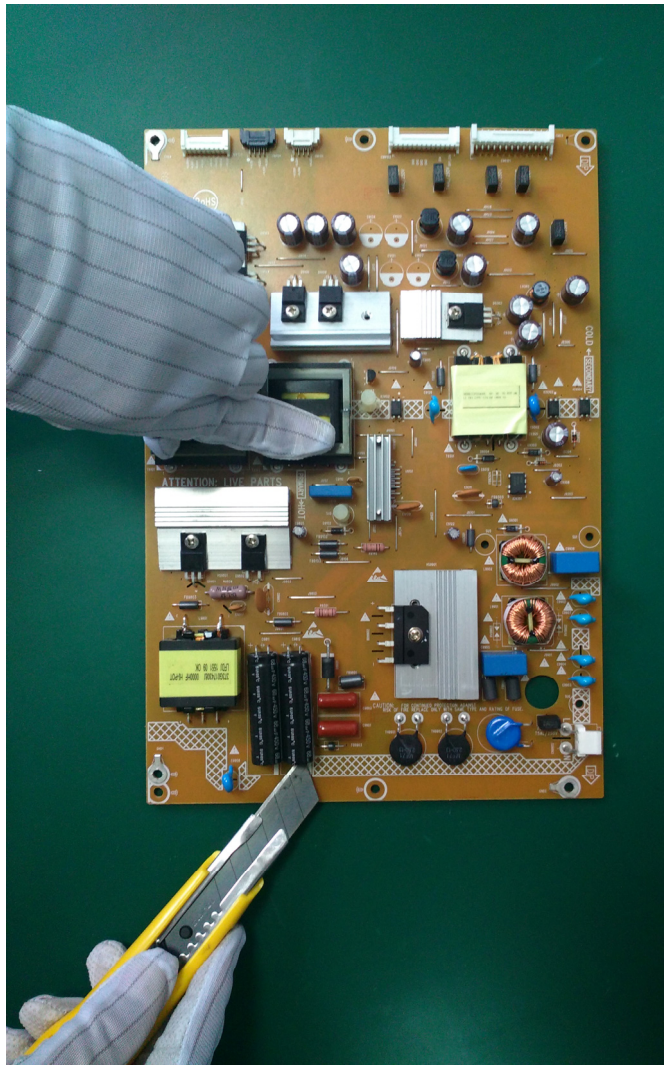
S15.Remove capacitors



Remove electrolyte capacitors (red mark) from printed circuit boards



Take out bulk cap. pin solder with soldering iron and absorber



Lift the bulk cap. up
and away from the
PCB

2. Product material information

The following substances, preparations, or components should be disposed of or recovered separately from other WEEE in compliance with Article 4 of EU Council Directive 75/442/EEC.

Capacitors / condensers (containing PCB/PCT)	No used
Mercury containing components	No used
Batteries	No used
Printed circuit boards (with a surface greater than 10 square cm)	Product has printed circuit boards (with a surface greater than 10 square cm)
Component contain toner, ink and liquids	No used
Plastic containing BFR	No used
Component and waste contain asbestos	No used
CRT	No used
Component contain CFC, HCFC, HFC and HC	No used
Gas discharge lamps	No used
LCD display > 100 cm ²	Product has an LCD greater than 100 cm ²
External electric cable	Product has external cables
Component contain refractory ceramic fibers	No used
Component contain radio-active substances	No used
Electrolyte capacitors (height > 25mm, diameter > 25mm)	Product has electrolyte capacitors (height > 25mm, diameter > 25mm)

3. Tools Required

List the type and size of the tools that would typically can be used to disassemble the product to a point where components and materials requiring selective treatment can be removed.

Tool Description:

- Phillip head Screwdriver
- Hex Screwdriver
- Penknife
- Soldering iron and absorber