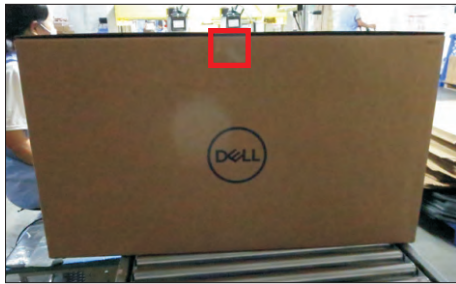


## 1. Disassembly Procedures:

**S1** Open the carton with a proper tool.

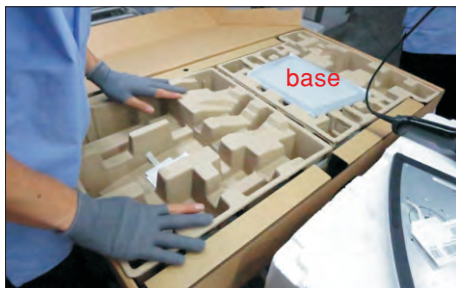


Take out all accessories including label(optional), QSG, user's manual, DP cable, USB cable, power cable and other packing materials from the carton. (Note: It depends on whether users returning the accessories)

**S2**



**S3** Take out the base and molded plug from the carton, then take out the monitor and stand from the carton.



**S4** Take out the monitor from EPE-bag and put the LCD monitor on a protective cushion.



**S5**

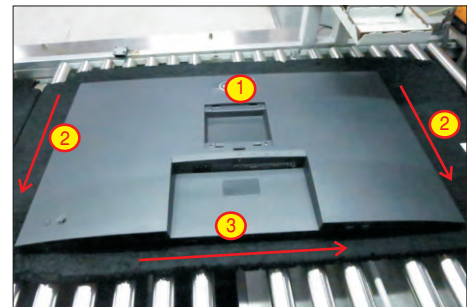
Use a Philips-head screwdriver to remove four screws for unlocking mechanisms.

(No.1~4 screw size=M4x11; Torque=11±1kgfxcM)



Wedge your fingers between rear cover and the middle bezel on the corners of the top side of the monitor to release the rear cover, then use one hand to press the middle bezel, the other hand to pull up carefully the rear cover in order of arrow preference for unlocking mechanisms of rear cover.

**S6**



Lift the rear cover up carefully. Disconnect the joystick key cable from the connector of the interface board, and then remove the rear cover and put it aside for later disassembling.

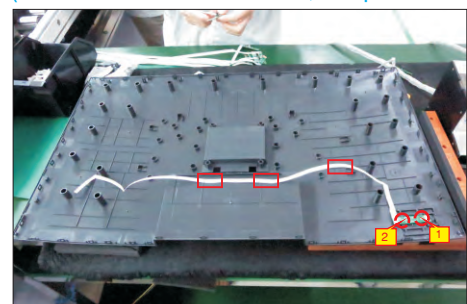
**S7**



Use a Philips-head screwdriver to remove 2pcs screw for unlocking the key board, then tear off the tapes and release the key board.

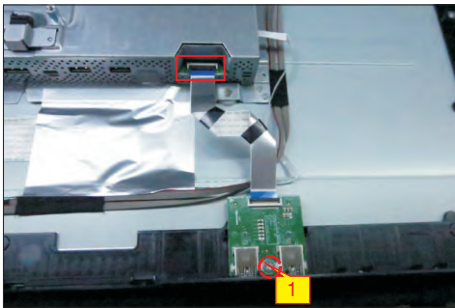
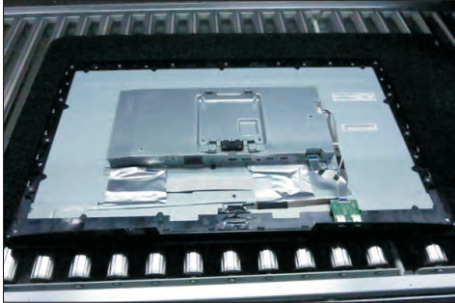
**S8**

(No.1~2 screw size=M2x2.4, Torque=0.8~1kgfxcM)



S9

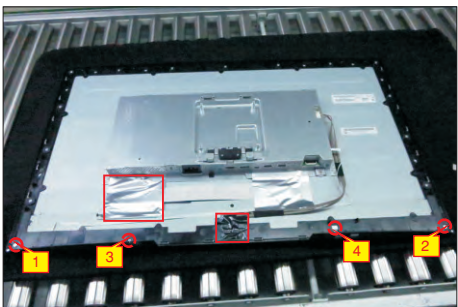
Use a Philips-head screwdriver to release 1 screws for unlocking the USB board, then disconnect the USB FFC cable away from the connector of the interface board and remove the Usb board unit.  
(No.1screw size=M3x6, Torque=4±0.5kgfxcM)



Tear off 1pcs conductive tape and 1pcs aluminum foil as the picture below shown. Use a Philips-head screwdriver to remove 4pcs screws for unlocking the middle bezel with front bezel.

S10

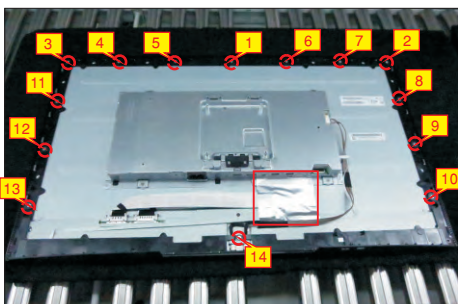
(No.1~4 screw size=M2x3.5, Torque=2.5±0.5kgfxcM)



Use a Philips-head screwdriver to remove 14pcs screws for unlocking the middle bezel with the panel module, then tear off the aluminum foil for unlocking the cables and bracket.

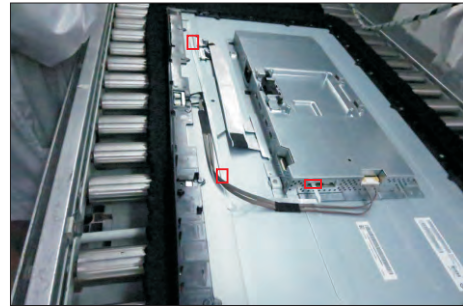
S11

(No.1~14 screw size=M3x5, Torque=5±0.5kgfxcM)



S12

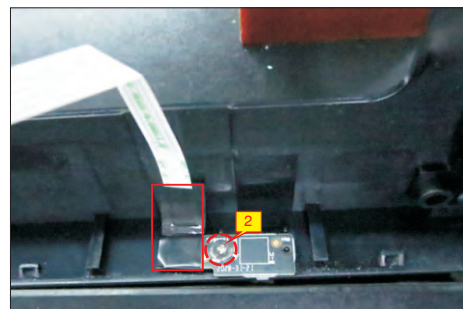
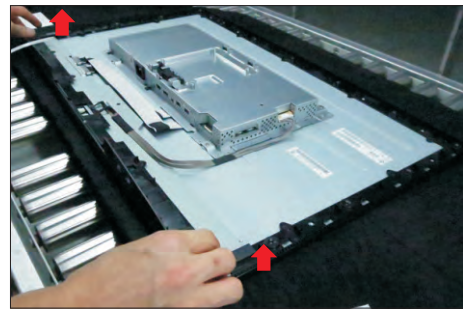
Disconnect the LED cable from the connector of the interface board, then release the LED cable by tearing off the tapes.



Take away the middle bezel, and put it on a fixture. Use a Philips-head screwdriver to remove 1pcs screw for unlocking the LED board with the middle bezel, and then tear off the tape for releasing the LED cable.

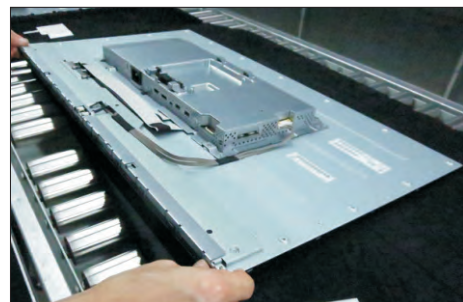
S13

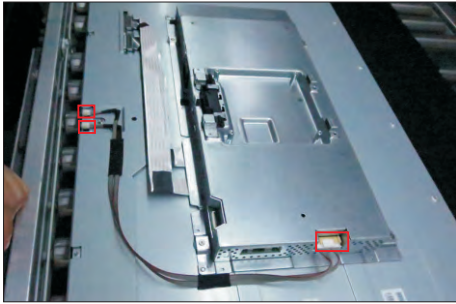
(No.1~3 screw size=M2x2.4, Torque=0.8±0.2kgfxcM)



Lift up the panel module with the bracket chassis for releasing the front bezel away from the panel module. Disconnect the panel lamp cables away from the connectors of the interface board and the panel module.

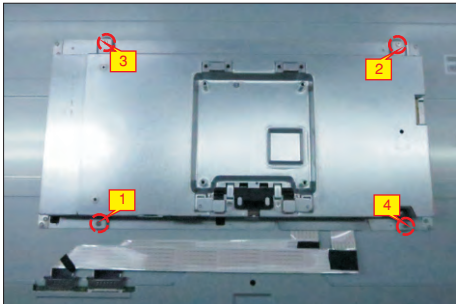
S14





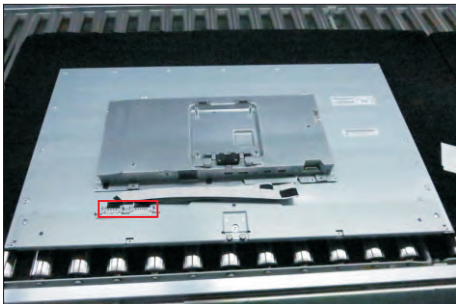
S15

Use a Philips-head screwdriver to remove 4pcs screws for unlocking the bracket with panel module.  
(No.1~4 screw size=M3x4, Torque=5±0.5kgfxcM)



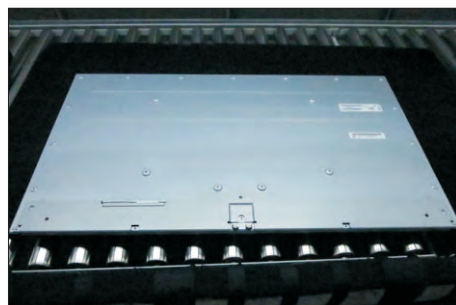
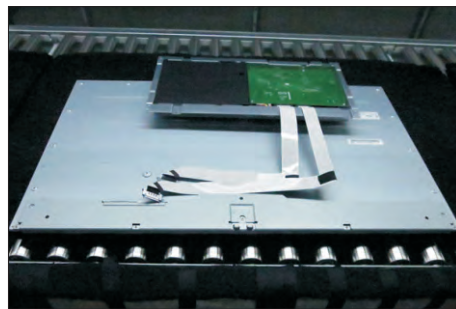
S16

Move up the bracket, then push the earing-lock and disconnect the 2pcs LVDS cables away from the connectors of the panel module.



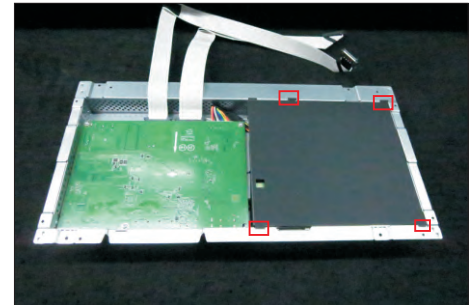
S17

Take away the bracket chassis module and then put the bracket chassis module on a protective cushion.



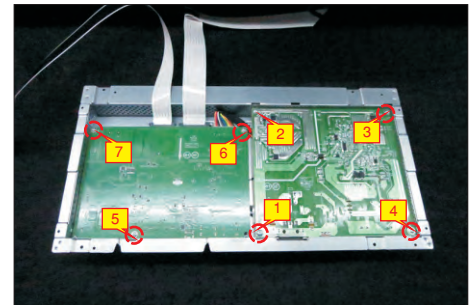
S18

Remove the Mylar tape from the hooks of the bracket.



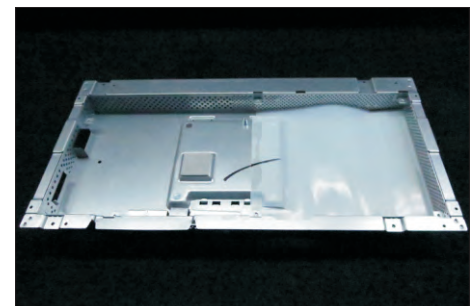
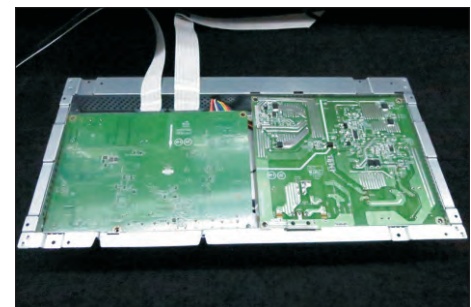
S19

Use a Philips-head screwdriver to remove 7pcs screws for interface board and power board.  
(No.1 screw size=M4x8, Torque=7±1kgfxcM;  
No.2~7 screw size=M3x7.5, Torque=7±1kgfxcM)



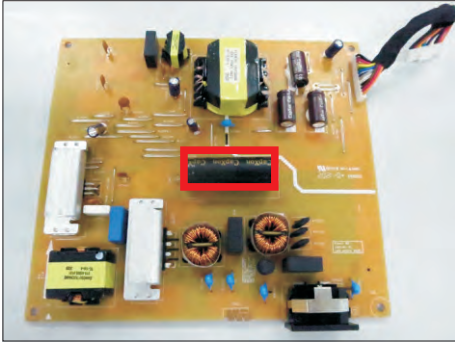
S20

Remove the power board board and interface board from the bracket chassis module carefully, and then disconnect all of the cables.

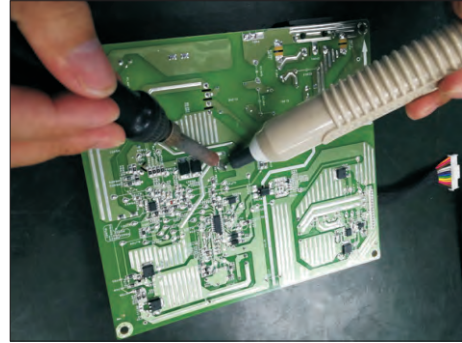


S20

Remove electrolyte capacitors (red mark) from printed circuit boards.

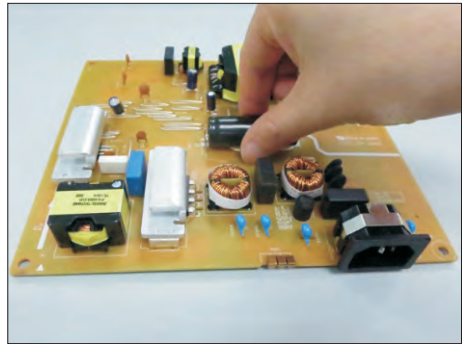
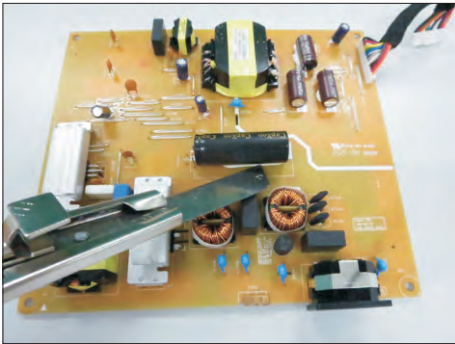


S20-4 Take out bulk cap. pin solder with soldering iron and absorber.

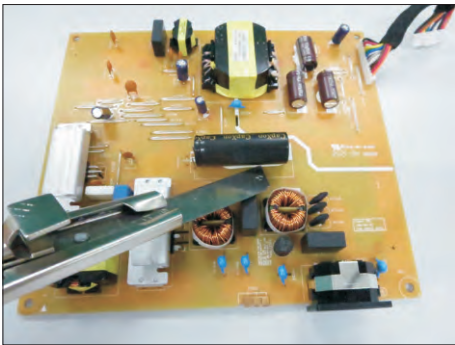


S20-1 Cut the glue between bulk cap. and PCB with a knife.

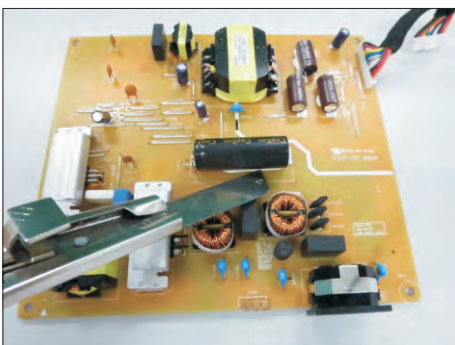
S20-5 Lift the bulk cap. up and away from the PCB.



S20-2 Ensure cutting path within the glue, don't touch bulk cap. or PCB.



S20-3 Cut into the bottom of bulk cap. and pull it up carefully.



## 2. Product material information

The following substances, preparations, or components should be disposed of or recovered separately from other WEEE in compliance with Article 4 of EU Council Directive 75/442/EEC.

Capacitors / condensers (containing PCB/PCT)	No used
Mercury containing components	No used
Batteries	No used
Printed circuit boards (with a surface greater than 10 square cm)	Product has printed circuit boards (with a surface greater than 10 square cm)
Component contain toner, ink and liquids	No used
Plastic containing BFR	No used
Component and waste contain asbestos	No used
CRT	No used
Component contain CFC, HCFC, HFC and HC	No used
Gas discharge lamps	No used
LCD display > 100 cm <sup>2</sup>	Product has an LCD greater than 100 cm <sup>2</sup>
External electric cable	Product has external cables
Component contain refractory ceramic fibers	No used
Component contain radio-active substances	No used
Electrolyte capacitors (height > 25mm, diameter > 25mm)	Product has electrolyte capacitors (height > 25mm, diameter > 25mm)

## 3. Tools Required

List the type and size of the tools that would typically can be used to disassemble the product to a point where components and materials requiring selective treatment can be removed.

Tool Description:

- Screwdriver (Phillip head) #1
- Screwdriver (Phillip head) #2
- Penknife
- Soldering iron and absorber