

◀◀ Go to contents page

### 1. Disassembly Procedures:

**S1** Open the Pizza carton with a proper tool.



Take out all of the accessories including QSG, DP cable, power cable, USB cable, CD&user's manual, stand and base from the carton from the carton. (Note: It depends on whether users returning the accessories)

**S2**



**S3**

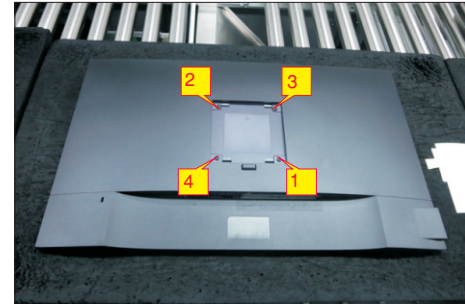
Take out of the Paper-top and monitor from the carton, then take out the monitor from the EPE bag and put the LCD monitor on a protective cushion.



**S4**

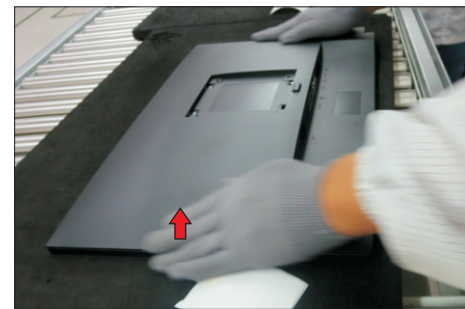
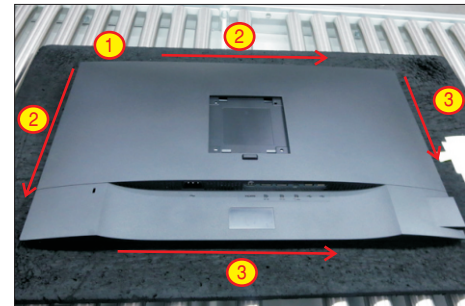
Use a Philips-head screwdriver to remove four screws for unlocking mechanisms.

(No.1~4 screw size=M4x10; Torque=12±0.5kgfxcm)



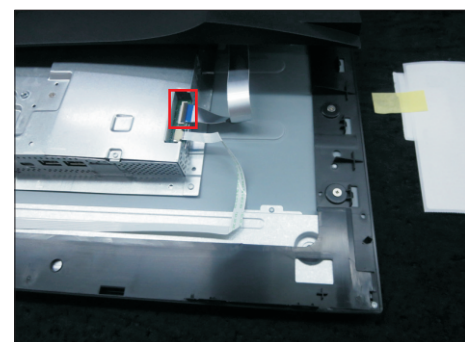
Wedge your fingers between the rear cover and the middle bezel on the corners of the top side of the monitor to release the rear cover, then use one hand to press the middle bezel, the other hand to pull up carefully the rear cover in order of arrow preference for unlocking mechanisms of rear cover.

**S5**



**S6**

Lift the rear cover up carefully. Disconnect the USB FFC cable from the connector of the interface board, and then remove the rear cover.

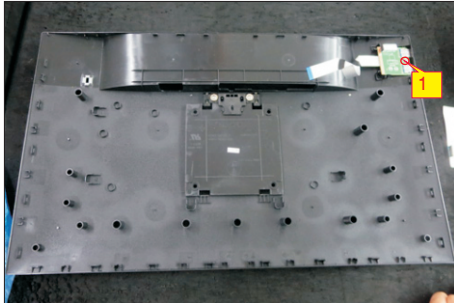


◀◀ [Go to contents page](#)

S7

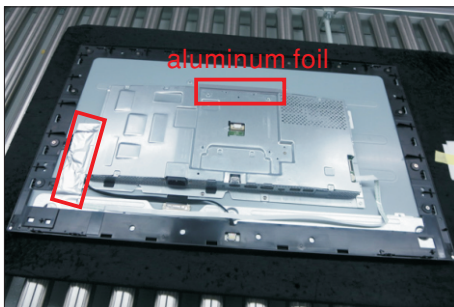
Use a Philips-head screwdriver to remove one screw for unlocking the USB board unit, then release the USB board unit and put it aside.

(No.1 screw size=M3x6, Torque=4±0.5kgfxcM)



S8

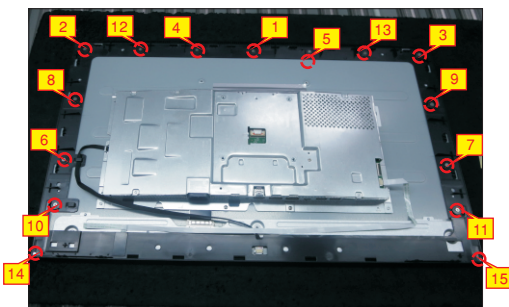
Tear off 2pcs the aluminium foils for unfixing the bracket chassis base.



S9

Use a Philips-head screwdriver to remove 15pcs screws for unlocking the middle bezel with the assembled unit.

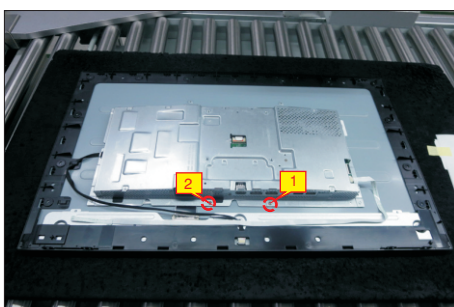
(No.1~13 screw size=M3x4, Torque=3~4kgfxcM;  
No.14~15 screw size=M1.6x1.7, Torque=0.6~1kgfxcM)



S10

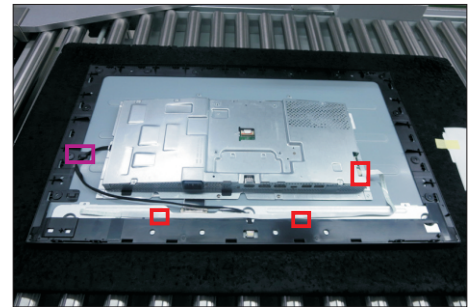
Use a Philips-head screwdriver to remove 2pcs screws for unlocking the bracket with the panel.

(No.1~2 screw size=M3x2.8, Torque=2~3kgfxcM)



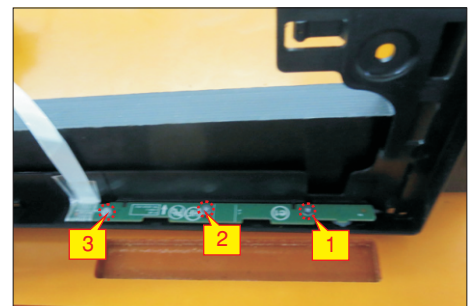
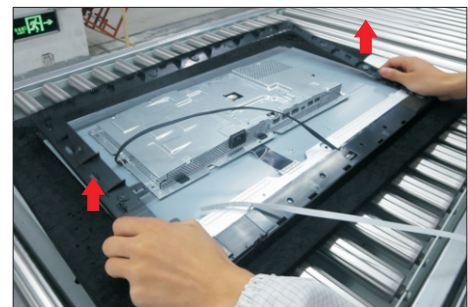
S11

Release the panel lamp cable from the hook of the middle bezel. Use a proper tool to release the function key cable from the connector, then pull the function key cable high for releasing the function key cable.



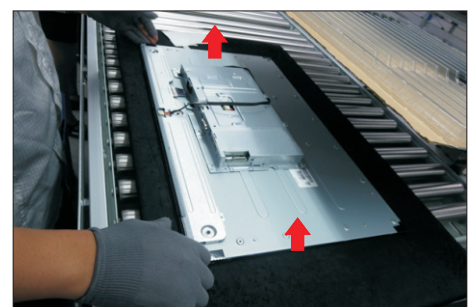
S12

Take away the middle bezel, and put it on a fixture, then use a Philips-head screwdriver to remove 3pcs screws for unlocking the function key board with the middle bezel.



S13

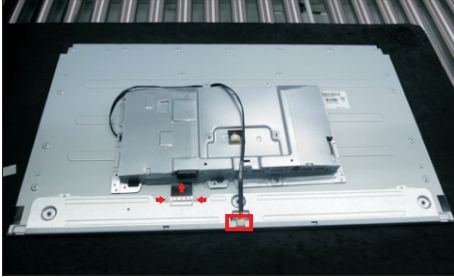
Lift up the panel module with the bracket chassis for releasing the front bezel away from the panel module.



◀◀ Go to contents page

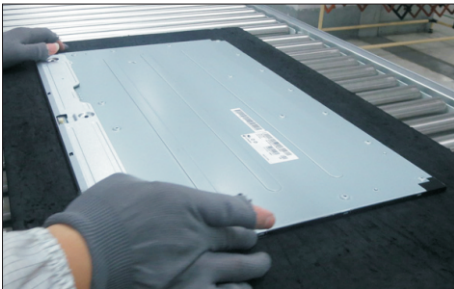
S14

Disconnect the panel lamp cable from the connector of panel module, then unplug the LVDS cable from the connector of the panel module by pushing the earing-locks.



S15

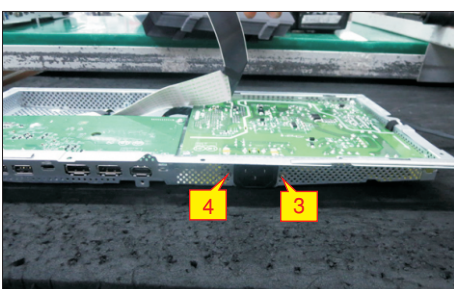
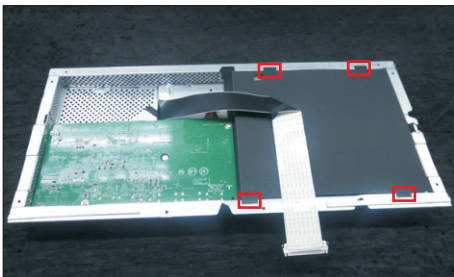
Take away the bracket chassis module and then put the bracket chassis module on a protective cushion.



S16

Remove the Mylar from the hooks of the bracket. Use a Philips-head screwdriver to remove two screws for unlocking the AC power outlet.

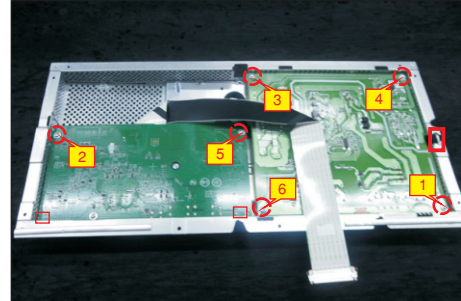
( No.1~2 screw size=M3x8, Torque=6~7kgfxcM)



S17

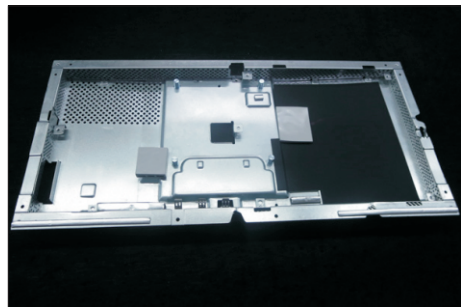
Use a Philips-head screwdriver to remove six screws for unlocking the circuit board, release all the cables from the hooks.

(No.1~5 screw size=M3x7.5, Torque=6±0.5kgfxcM;  
No. 6 screw size=M4x8, Torque=6±0.5kgfxcM)

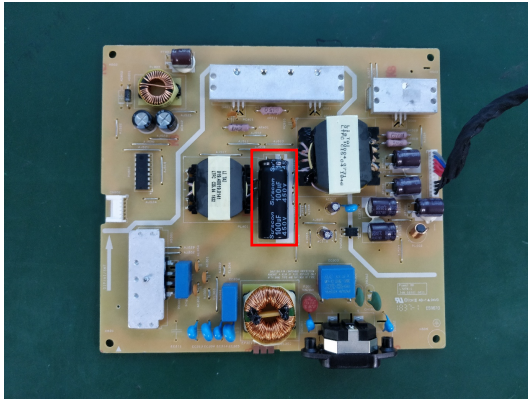


S18

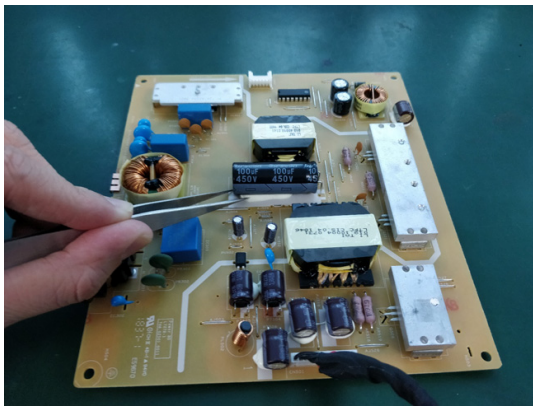
Remove the interface board and power board from the bracket chassis module carefully, and disconnect all the cables.



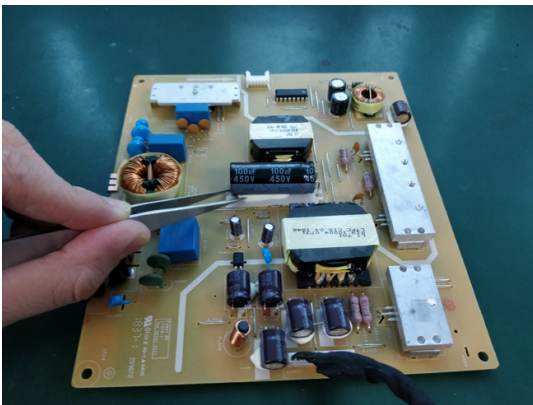
**S19** Remove electrolyte capacitors (red mark) from printed circuit boards



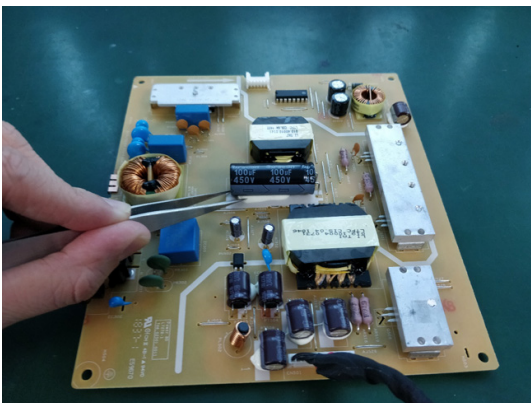
S19-1 Cut the glue between bulk cap. and PCB with a knife



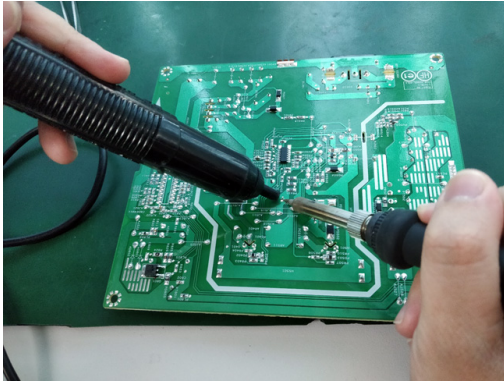
S19-2 Ensure cutting path within the glue, don't touch bulk cap. or PCB



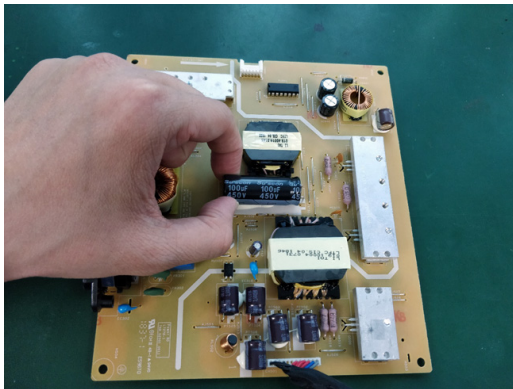
S19-3 Cut into the bottom of bulk cap. and pull it up carefully



S19-4 Take out bulk cap. pin solder with soldering iron and absorber



S19-5 Lift the bulk cap. up and away from the PCB



## 2. Product material information

The following substances, preparations, or components should be disposed of or recovered separately from other WEEE in compliance with Article 4 of EU Council Directive 75/442/EEC.

Capacitors / condensers (containing PCB/PCT)	No used
Mercury containing components	No used
Batteries	No used
Printed circuit boards (with a surface greater than 10 square cm)	Product has printed circuit boards (with a surface greater than 10 square cm)
Component contain toner, ink and liquids	No used
Plastic containing BFR	No used
Component and waste contain asbestos	No used
CRT	No used
Component contain CFC, HCFC, HFC and HC	No used
Gas discharge lamps	No used
LCD display > 100 cm <sup>2</sup>	Product has an LCD greater than 100 cm <sup>2</sup>
External electric cable	Product has external cables
Component contain refractory ceramic fibers	No used
Component contain radio-active substances	No used
Electrolyte capacitors (height > 25mm, diameter > 25mm)	Product has electrolyte capacitors (height > 25mm, diameter > 25mm)

## 3. Tools Required

List the type and size of the tools that would typically can be used to disassemble the product to a point where components and materials requiring selective treatment can be removed.

Tool Description:

- Screwdriver (Phillip head) #1
- Screwdriver (Phillip head) #2
- Penknife
- Soldering iron and absorber