

1. Disassembly Procedures

S1 Turn off the monitor.

S2 To remove the stand:

Place the monitor on a soft cloth or cushion

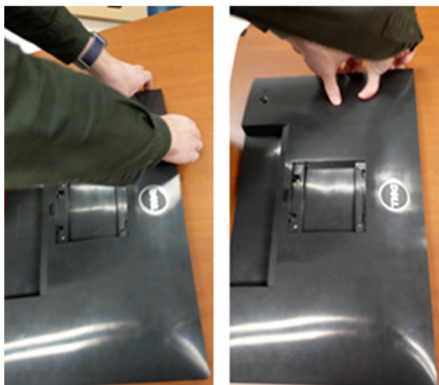
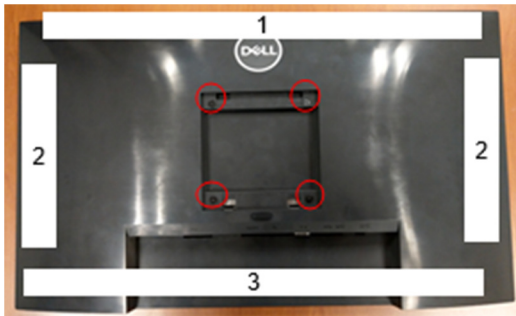
Press and hold the stand release button

Lift the stand up and away from the monitor



S3 Unlock 4 RC screws

Disassemble Rear Cover from Middle Frame according to the sequence shown in the picture



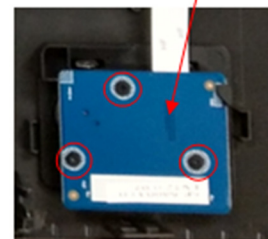
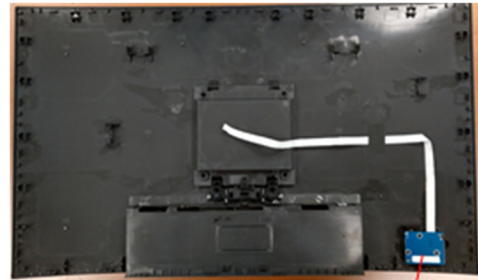
(Screw Torque: 9±1kgf)

S4 Pull out CTRL FFC from I/F BD to take off Rear Cover



S5 Tear off 1 tape from CTRL BD FFC on Rear Cover

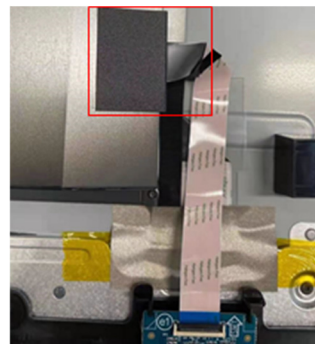
Unlock 3 screws to disassemble CTRL BD from Rear Cover



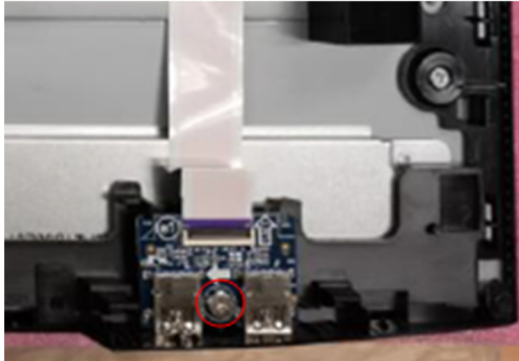
(Screw Torque: 1.4±0.1kgf)

S6 Tear off malar from Main SHD

Pull out USB FFC from USB BD and I/F BD

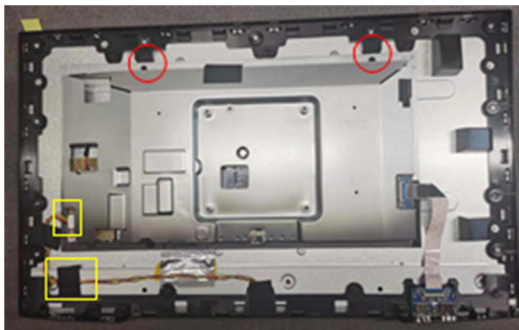


- S7** Unlock 1 screw on USB BD
Disassemble USB BD from Middle Frame

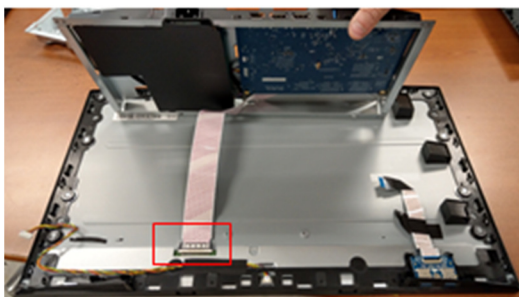


(Screw Torque: 4.5 ± 0.5 kgf)

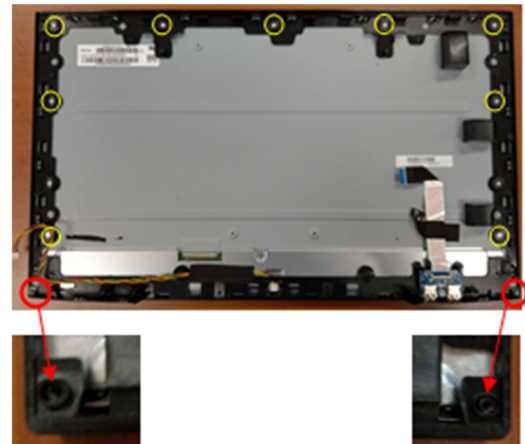
- S8** Tear off adhesive tape on Backlight Wire
Pull out Backlight Wire from LED Driver BD
Disassemble Main SHD from Middle Frame



- S9** Pull out LVDS cable and take off Main SHD from panel



- S10** Unlock 9 screws on Middle Frame
Unlock 2 screws on Bezel Chin



(Screw Torque-MF: $3.5 \sim 4.0$ kgf)
(Screw Torque-BZL Chin: 2.0 ± 0.1 kgf)

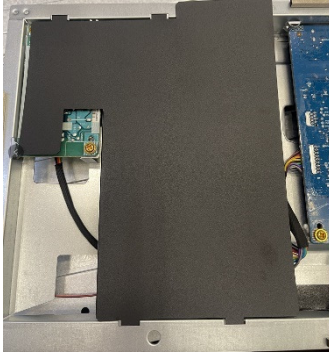
- S11** Disassemble Middle Frame and Bezel Chin from Panel



- S12** Pull out Backlight Wire from panel



S13 Disassemble Mylar from Main SHD

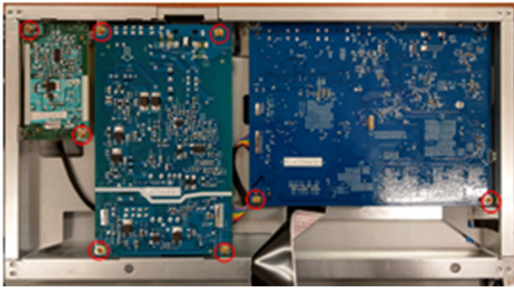


S15 Disassemble I/F BD, SPS BD, LED Driver BD from Main SHD

Pull out all cables from I/F BD, SPS BD and LED Driver BD

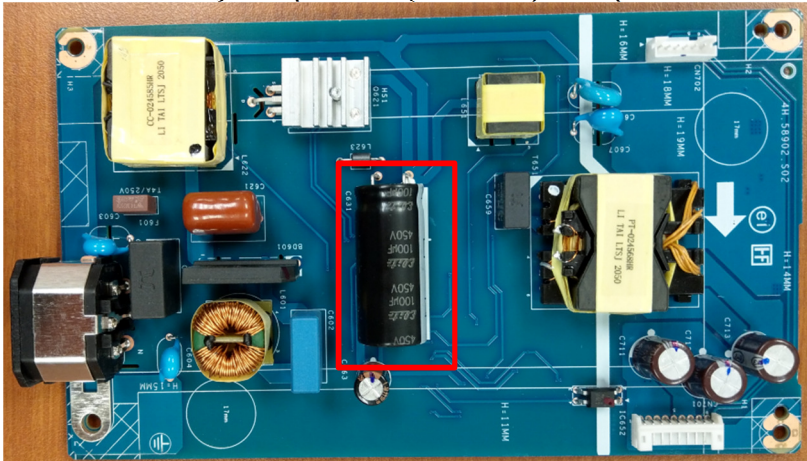


S14 Unlock 8 PCB screws

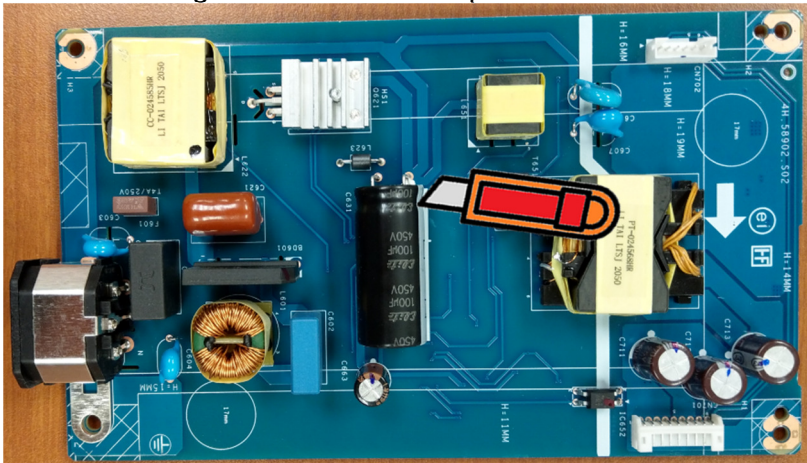


(Screw Torque-PCB: 8.5 ± 1 kgf)

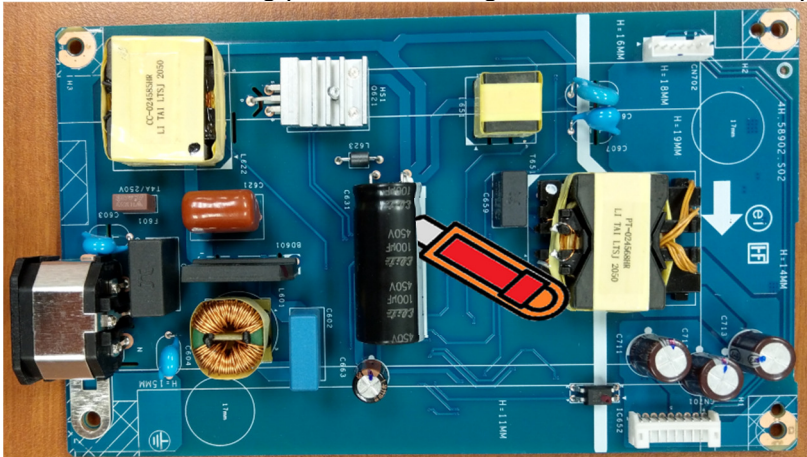
S16 Remove electrolyte capacitors (red mark) from printed circuit boards



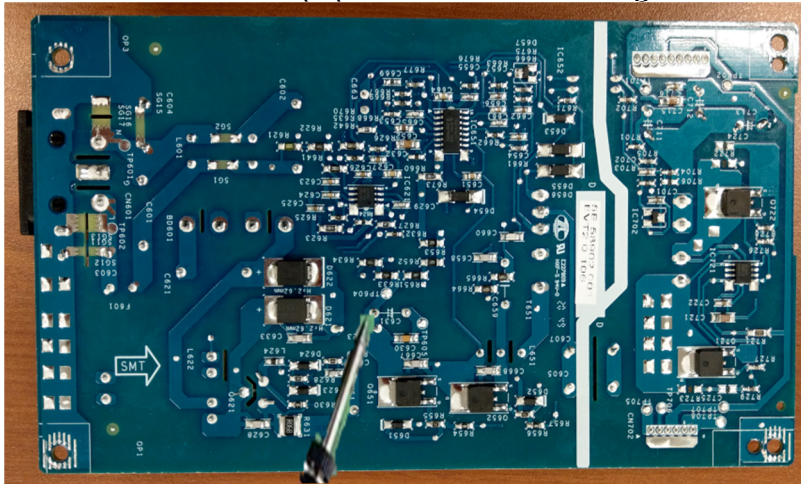
S16-1 Cut the glue between bulk cap. and PCB with a knife



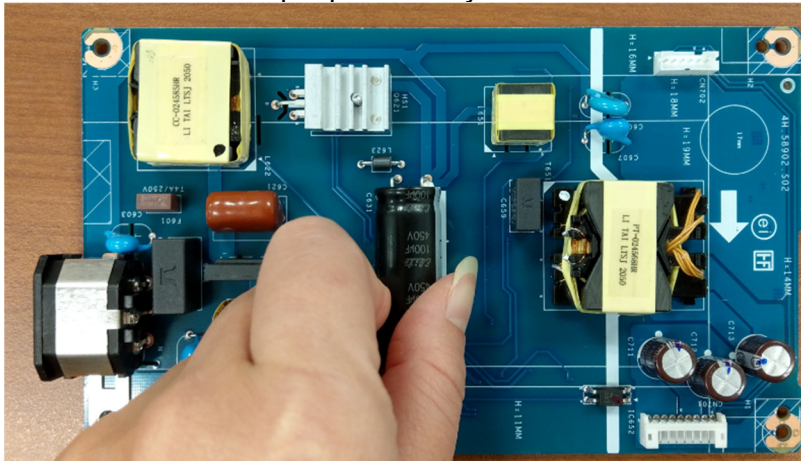
S16-2 Ensure cutting path within the glue, don't touch bulk cap. or PCB



S16-3 Take out bulk cap. pin solder with soldering iron and absorber



S16-4 Lift the bulk cap. up and away from the PCB



2. Product material information

The following substances, preparations, or components should be disposed of or recovered separately from other WEEE in compliance with Article 4 of EU Council Directive 75/442/EEC.

Capacitors / condensers (containing PCB/PCT)	No used
Mercury containing components	No used
Batteries	No used
Printed circuit boards (with a surface greater than 10 square cm)	Product has printed circuit boards (with a surface greater than 10 square cm)
Component contain toner, ink and liquids	No used
Plastic containing BFR	No used
Component and waste contain asbestos	No used
CRT	No used
Component contain CFC, HCFC, HFC and HC	No used
Gas discharge lamps	No used
LCD display > 100 cm ²	Product has an LCD greater than 100 cm ²
External electric cable	Product has external cables
Component contain refractory ceramic fibers	No used
Component contain radio-active substances	No used
Electrolyte capacitors (height > 25mm, diameter > 25mm)	Product has electrolyte capacitors (height >25mm, diameter > 25mm)

3. Tools Required

List the type and size of the tools that would typically can be used to disassemble the product to a point where components and materials requiring selective treatment can be removed.

Tool Description:

- Screwdriver
- Scraper Bar
- Penknife
- Soldering iron and absorber