

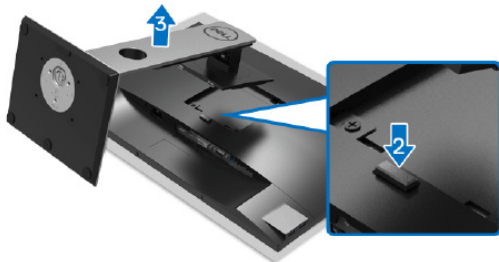
1. Disassembly Procedures

S1 Turn off the monitor.

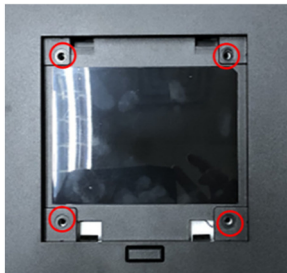
S2 Place the monitor on a soft cloth or cushion.

Press and hold the stand release button.

Lift the stand up and away from the monitor.



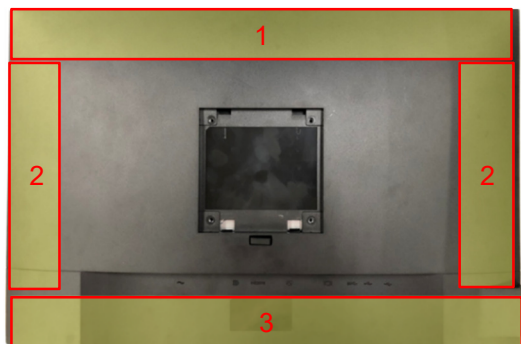
S3 Unlock 4 screws on Rear Cover



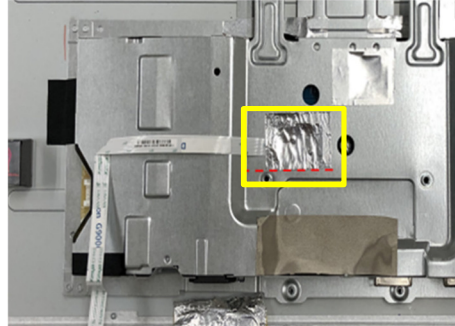
(Screw Torque: 8.5±1.0kgf)

S4 Disassemble Rear Cover from the monitor

- Notice the disassembly order:
- 1) Disassemble the Top part
 - 2) Disassemble the Left / Right part
 - 3) Disassemble the Bottom part
 - 4) Remove RC from Mid-Frame

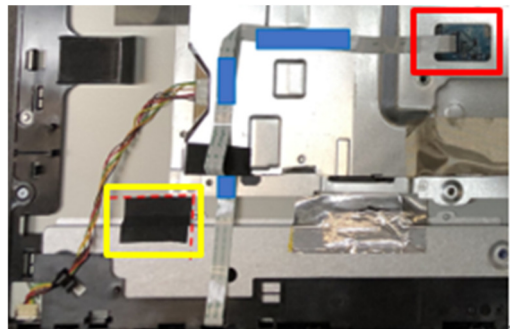


S5 Tear off the small aluminum foil from Main SHD

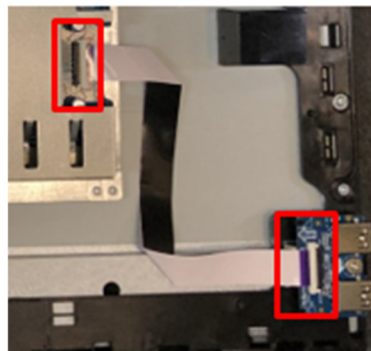


S6 Tear off the acetate adhesive tape from Panel

Pull out CTRL BD FFC cable from I/F BD and tear off it from Main SHD



S7 Pull out USB BD cable from I/F BD and USB BD

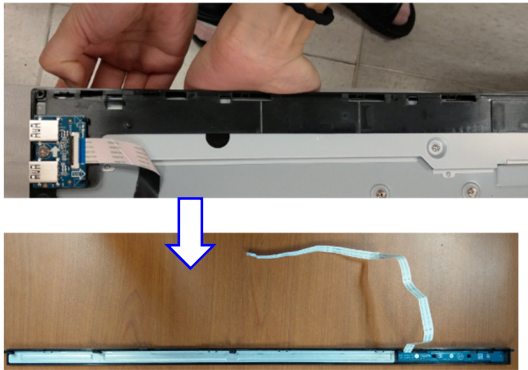


S8 Unlock 5 BZL TRIM screws



(Screw Torque: 2.0±0.5kgf)

- S9** Disassemble BZL TRIM from Mid-Frame



- S10** Tear off CTRL BD Mylar from CTRL BD



- S11** Unlock 3 CTRL BD screws

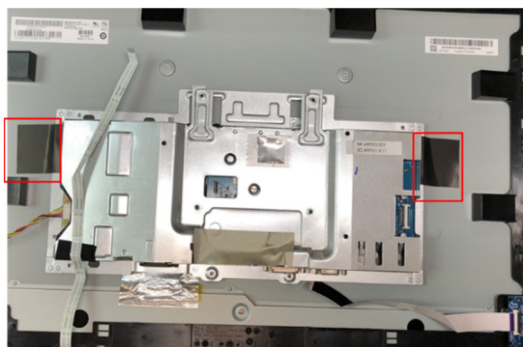


(Screw Torque: 1.2±0.5kgf)

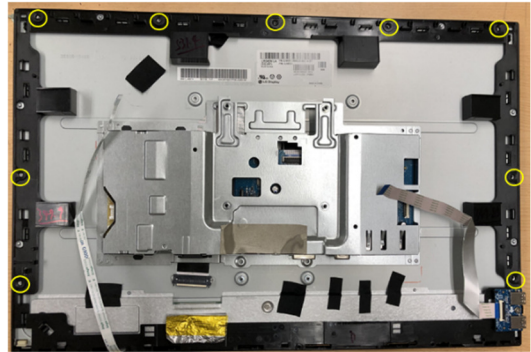
- S12** Disassemble CTRL BD, OSD Button and PWR Button



- S13** Tear off 2 large acetate adhesive tapes from the Panel

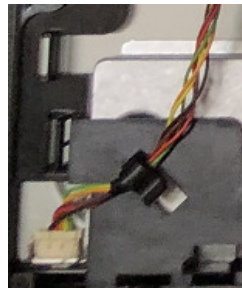


- S14** Unlock 9 MF screws



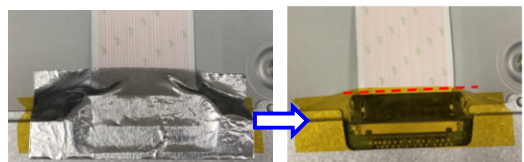
(Screw Torque: 4.0±0.5kgf)

- S15** Pull out LED Backlight wire from SPS BD and Panel

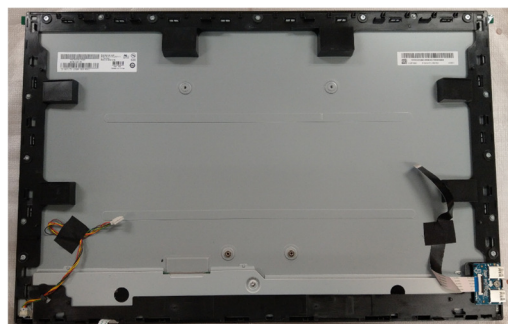


- S16** Tear off aluminum foil and tape from LVDS cable

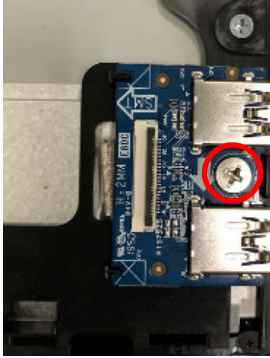
Pull out the LVDS cable from Panel.



- S17** Disassemble Mid-Frame from Panel

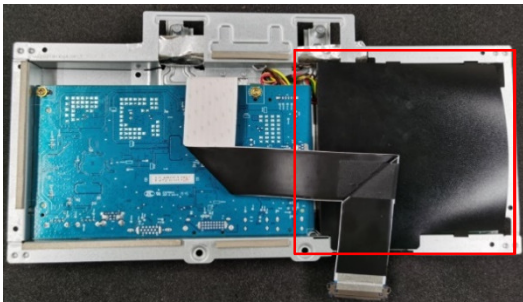


- S18** Unlock USB BD screw and disassemble USB BD from Mid-Frame

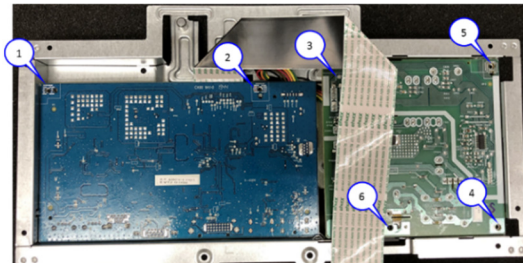


(Screw Torque: 4.5 ± 0.5 kgf)

- S19** Remove Safety Mylar from SPS BD



- S20** Unlock 6 PCBA screws from PCBA



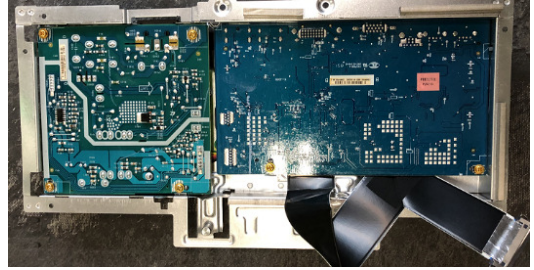
(Screw Torque: 6.5 ± 1.0 kgf)

- S21** Unlock 4 hexagonal screws from Main SHD

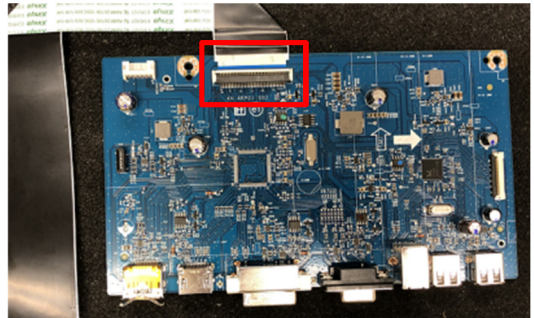


(Screw Torque: 5.0 ± 0.6 kgf)

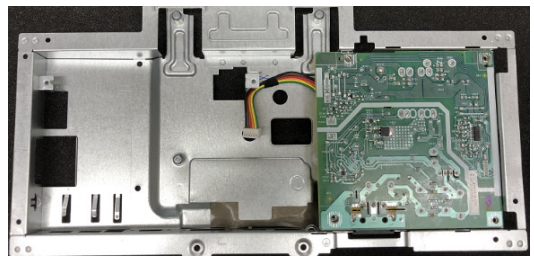
- S22** Disassemble I/F BD from Main SHD and unplug SPS BD wire



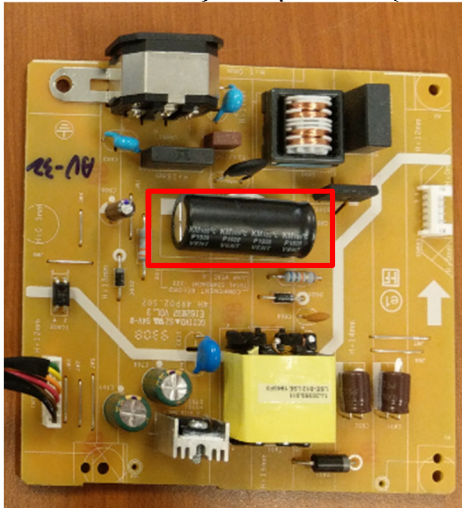
- S23** Unplug FFC LVDS cable from I/F BD



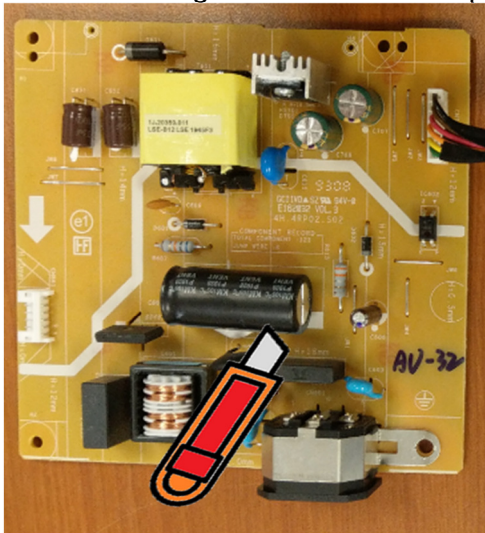
- S24** Disassemble SPS BD from Main SHD



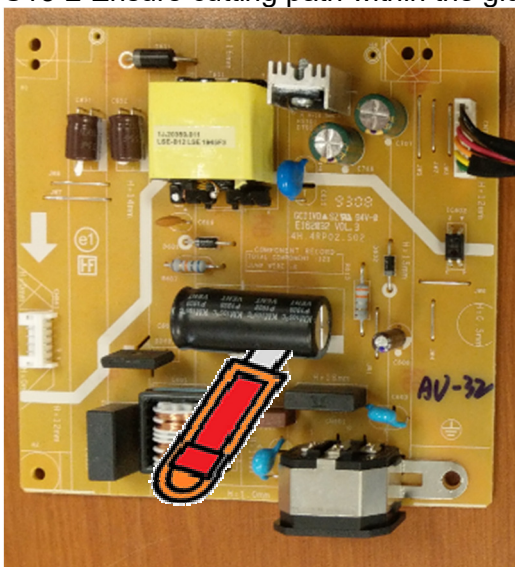
S13 Remove electrolyte capacitors (red mark) from printed circuit boards



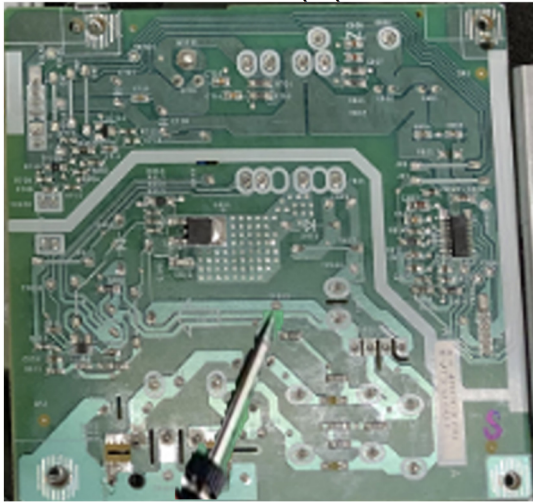
S13-1 Cut the glue between bulk cap. and PCB with a knife



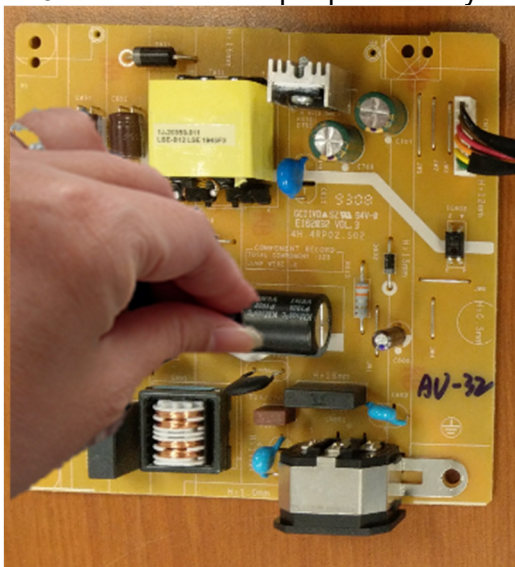
S13-2 Ensure cutting path within the glue, don't touch bulk cap. or PCB



S13-3 Take out bulk cap. pin solder with soldering iron and absorber



S13-4 Lift the bulk cap. up and away from the PCB



2. Product material information

The following substances, preparations, or components should be disposed of or recovered separately from other WEEE in compliance with Article 4 of EU Council Directive 75/442/EEC.

Capacitors / condensers (containing PCB/PCT)	No used
Mercury containing components	No used
Batteries	No used
Printed circuit boards (with a surface greater than 10 square cm)	Product has printed circuit boards (with a surface greater than 10 square cm)
Component contain toner, ink and liquids	No used
Plastic containing BFR	No used
Component and waste contain asbestos	No used
CRT	No used
Component contain CFC, HCFC, HFC and HC	No used
Gas discharge lamps	No used
LCD display > 100 cm ²	Product has an LCD greater than 100 cm ²
External electric cable	Product has external cables
Component contain refractory ceramic fibers	No used
Component contain radio-active substances	No used
Electrolyte capacitors (height > 25mm, diameter > 25mm)	Product has electrolyte capacitors (height >25mm, diameter > 25mm)

3. Tools Required

List the type and size of the tools that would typically can be used to disassemble the product to a point where components and materials requiring selective treatment can be removed.

Tool Description:

- Screwdriver
- Scraper Bar
- Penknife
- Soldering iron and absorber