

Dell

P2219H/P2319H/P2419H/P2719H

User's Guide

Model: P2219H/P2319H/P2419H/P2719H

Regulatory model: P2219Hb/P2319Ht/P2319Hc/P2419Hb/P2419Hc/P2719Ht



 **NOTE:** A NOTE indicates important information that helps you make better use of your computer.

 **CAUTION:** A CAUTION indicates potential damage to hardware or loss of data if instructions are not followed.

 **WARNING:** A WARNING indicates a potential for property damage, personal injury, or death.

Copyright © 2018-2020 Dell Inc. or its subsidiaries. All rights reserved. Dell, EMC, and other trademarks are trademarks of Dell Inc. or its subsidiaries. Other trademarks may be trademarks of their respective owners.

2020 - 12

Rev. A03

Contents

About your monitor	6
Package contents	6
Product features	8
Identifying parts and controls	9
Front view	9
Back view	10
Side view	11
Bottom view	12
Monitor specifications	13
Resolution specifications	16
Supported video modes	16
Preset display modes	16
Electrical specifications	17
Physical characteristics	18
Environmental characteristics	21
Pin assignments	22
Plug and play capability	25
Universal Serial Bus (USB) interface	25
USB 3.0	25
USB 2.0	25
USB 3.0 upstream connector	26
USB 3.0 downstream connector	26
USB 2.0 downstream connector	27
USB ports	27
LCD monitor quality and pixel policy	27
Maintenance guidelines	28
Cleaning your monitor	28



- Setting up the monitor 29**
 - Attaching the stand 29
 - Connecting your monitor 31
 - Connecting the DisplayPort (DisplayPort to DisplayPort) cable . . 31
 - Connecting the VGA cable (optional) 31
 - Connecting the HDMI cable (optional) 32
 - Connecting the USB 3.0 cable 32
 - Organizing your cables 33
 - Removing the monitor stand 33
 - VESA wall mounting (optional) 34
- Operating the monitor 35**
 - Power on the monitor 35
 - Using the front-panel controls 35
 - Front-panel button 36
 - Using the On-Screen Display (OSD) menu 37
 - Accessing the menu system 37
 - OSD warning message 50
 - Setting the maximum resolution 53
 - Using the tilt, swivel, and vertical extension 54
 - Tilt, swivel 54
 - Vertical extension 55
 - Rotating the monitor 55
 - Rotate clockwise 56
 - Rotate counterclockwise 56
 - Adjusting the rotation display settings of your system . . 57
- Troubleshooting 58**
 - Self-test 58
 - Built-in diagnostics 59
 - Common problems 60



Product specific problems 64

Universal Serial Bus (USB) specific problems 65

Appendix 66

FCC notices (U.S. only) and other regulatory information 66

Contact Dell 66



EU product database for energy label and product information sheet 66

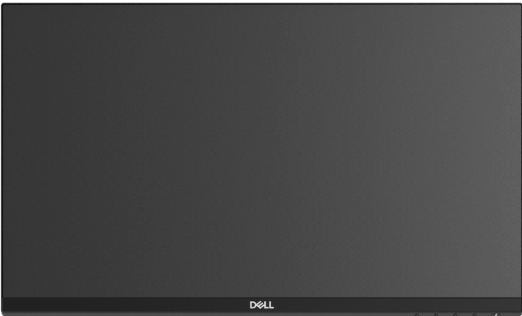



About your monitor

Package contents

Your monitor ships with the components shown in the table below. If any component is missing, contact Dell technical support. For more information, see [Contact Dell](#).

-  **NOTE: Some items may be optional and may not ship with your monitor. Some features may not be available in certain countries.**
-  **NOTE: If you are attaching a stand that you purchased from any other source, follow the set up instructions that were included with the stand.**

	Monitor
	Stand riser




	<p>Stand base</p>
	<p>Power cable (varies by country)</p>
	<p>DisplayPort cable</p>
	<p>VGA cable (Japan only)</p>
	<p>HDMI cable (shipped with P2219H/P2319H/P2719H, for Brazil only)</p>
	<p>USB 3.0 upstream cable (enables the USB ports on the monitor)</p>
	<ul style="list-style-type: none"> • Quick Setup Guide • Safety, Environmental, and Regulatory Information



Product features

The **Dell P2219H/P2319H/P2419H/P2719H** flat panel display has an active matrix, Thin-Film Transistor (TFT), Liquid Crystal Display (LCD) and LED backlight. The monitor features include:

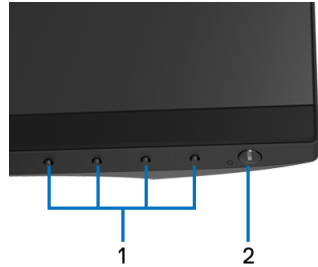
- **P2219H:** 54.6 cm (21.5-inch) viewable area (measured diagonally). Resolution: Up to 1920 x 1080 through VGA, DisplayPort, and HDMI, with full-screen support or lower resolutions.
- **P2319H:** 58.4 cm (23.0-inch) viewable area (measured diagonally). Resolution: Up to 1920 x 1080 through VGA, DisplayPort, and HDMI, with full-screen support or lower resolutions.
- **P2419H:** 60.5 cm (23.8-inch) viewable area (measured diagonally). Resolution: Up to 1920 x 1080 through VGA, DisplayPort, and HDMI, with full-screen support or lower resolutions.
- **P2719H:** 68.6 cm (27.0-inch) viewable area (measured diagonally). Resolution: Up to 1920 x 1080 through VGA, DisplayPort, and HDMI, with full-screen support or lower resolutions.
- Color gamut of 72% NTSC.
- Tilt, swivel, height, and rotate adjustment capabilities.
- Removable stand and Video Electronics Standards Association (VESA™) 100 mm mounting holes for flexible mounting solutions.
- Digital connectivity with DisplayPort and HDMI.
- Equipped with 1 USB upstream port and 4 USB downstream ports.
- Plug and play capability if supported by your system.
- On-Screen Display (OSD) adjustments for ease of set-up and screen optimization.
- Security lock slot.
- Stand lock.
- ≤ 0.3 W in Standby Mode.
- Optimize eye comfort with a flicker-free screen.

 **WARNING: The possible long-term effects of blue light emission from the monitor may cause damage to the eyes, including eye fatigue, digital eye strain, and so on. ComfortView feature is designed to reduce the amount of blue light emitted from the monitor to optimize eye comfort.**



Identifying parts and controls

Front view



Front panel controls

Label	Description
1	Function buttons (For more information, see Operating the monitor)
2	Power On/Off button (with LED indicator)



Back view

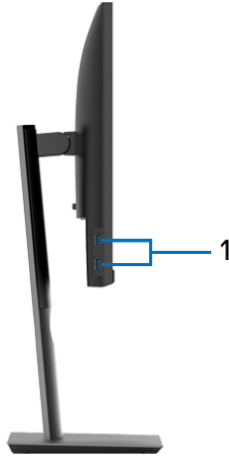


Back view with monitor stand

Label	Description	Use
1	VESA mounting holes (100 mm x 100 mm - behind attached VESA Cover)	Wall mount monitor using VESA-compatible wall mount kit (100 mm x 100 mm).
2	Regulatory label	Lists the regulatory approvals.
3	Stand release button	Releases stand from the monitor.
4	Security lock slot	Secures monitor with security lock (security lock not included).
5	Barcode, serial number, and Service Tag label	Refer to this label if you need to contact Dell for technical support.
6	Cable-management slot	Use to organize cables by inserting them through the slot.



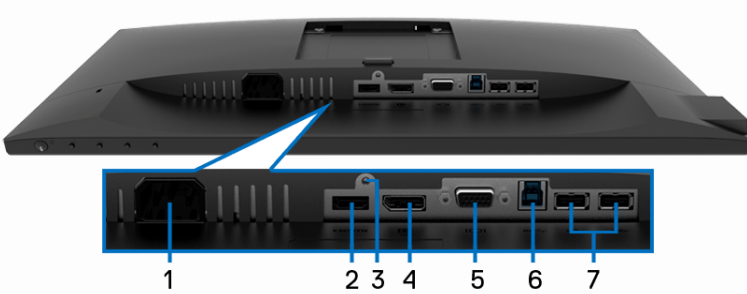
Side view



Label	Description	Use
1	USB downstream ports (2)	Connect your USB device. NOTE: To use these ports, you must connect the USB cable (shipped with your monitor) to the USB-upstream port on the monitor and to your computer.



Bottom view



Bottom view without monitor stand

Label	Description	Use
1	Power connector	Connect the power cable (shipped with your monitor).
2	HDMI port	Connect your computer with HDMI cable (shipped with P2219H/P2319H/P2719H, for Brazil only).
3	Stand lock feature	To lock the stand to the monitor using a M3 x 6 mm screw (screw not included).
4	DisplayPort	Connect your computer with DisplayPort cable (shipped with your monitor).
5	VGA connector	Connect your computer with VGA cable (shipped with your monitor, for Japan only).
6	USB upstream port	Connect the USB cable (shipped with your monitor) to this port and your computer to enable the USB ports on your monitor.
7	USB downstream ports (2)	Connect your USB device. NOTE: To use this port, you must connect the USB cable (shipped with your monitor) to the USB-upstream port on the monitor and to your computer.



Monitor specifications

Model	P2219H	P2319H
Screen type	Active matrix - TFT LCD	
Panel technology	In-Plane Switching Technology	
Aspect ratio	16:9	
Viewable image		
Diagonal	546.10 mm (21.5 inches)	584.20 mm (23.0 inches)
Width (active area)	476.06 mm (18.74 inches)	509.18 mm (20.05 inches)
Height (active area)	267.79 mm (10.54 inches)	286.42 mm (11.28 inches)
Total area	127484.10 mm ² (197.60 inch ²)	145839.33 mm ² (226.05 inch ²)
Pixel pitch	0.248 mm x 0.248 mm	0.265 mm x 0.265 mm
Pixel per inch (PPI)	102	96
Viewing angle	178° (vertical) typical 178° (horizontal) typical	
Luminance output	250 cd/m ² (typical)	
Contrast ratio	1000 to 1 (typical)	
Faceplate coating	Anti-Glare with 3H hardness	
Backlight	LED edgelight system	
Response time	8 ms (Normal) 5 ms (Fast)	
Color depth	16.7 million colors	
Color gamut	72% (CIE1931) NOTE: Color gamut (typical) is based on CIE1976 (82%) and CIE1931 (72%) test standards.	
Built-in devices	<ul style="list-style-type: none"> • USB 3.0 super-speed hub (with 1 x USB 3.0 upstream port) • 2 x USB 3.0 downstream ports • 2 x USB 2.0 downstream ports 	



Ports and connectors	<ul style="list-style-type: none"> • 1 x DisplayPort version 1.2 • 1 x HDMI port version 1.4 • 1 x VGA port • 1 x USB 3.0 upstream port (bottom) • 2 x USB 3.0 downstream ports (side) • 2 x USB 2.0 downstream ports (bottom) 	
Border width (edge of monitor to active area)	5.62 mm (Top/Left/Right) 19.99 mm (Bottom)	5.40 mm (Top/Left/Right) 19.86 mm (Bottom)
Adjustability		
Height adjustable stand	130 mm	
Tilt	-5° to 21°	
Swivel	-45° to 45°	
Pivot	-90° to 90°	
Dell Display Manager compatibility	Yes	
Security	Security lock slot (cable lock sold separately)	

Model	P2419H	P2719H
Screen type	Active matrix - TFT LCD	
Panel technology	In-Plane Switching Technology	
Aspect ratio	16:9	
Viewable image		
Diagonal	604.52 mm (23.8 inches)	685.99 mm (27.0 inches)
Width (active area)	527.04 mm (20.75 inches)	597.88 mm (23.54 inches)
Height (active area)	296.46 mm (11.67 inches)	336.31 mm (13.24 inches)
Total area	156246.27 mm ² (242.16 inch ²)	201073.02 mm ² (311.67 inch ²)
Pixel pitch	0.275 mm x 0.275 mm	0.311 mm x 0.311 mm
Pixel per inch (PPI)	92	82
Viewing angle	178° (vertical) typical 178° (horizontal) typical	



Luminance output	250 cd/m ² (typical)	300 cd/m ² (typical)
Contrast ratio	1000 to 1 (typical)	
Faceplate coating	Anti-Glare with 3H hardness	
Backlight	LED edgelight system	
Response time	8 ms (Normal) 5 ms (Fast)	
Color depth	16.7 million colors	
Color gamut	72% (CIE1931) NOTE: Color gamut (typical) is based on CIE1976 (82%) and CIE1931 (72%) test standards.	
Built-in devices	<ul style="list-style-type: none"> • USB 3.0 super-speed hub (with 1 x USB 3.0 upstream port) • 2 x USB 3.0 downstream ports • 2 x USB 2.0 downstream ports 	
Ports and connectors	<ul style="list-style-type: none"> • 1 x DisplayPort version 1.2 • 1 x HDMI port version 1.4 • 1 x VGA port • 1 x USB 3.0 upstream port (bottom) • 2 x USB 3.0 downstream ports (side) • 2 x USB 2.0 downstream ports (bottom) 	
Border width (edge of monitor to active area)	5.38 mm (Top/Left/Right) 20.31 mm (Bottom)	6.00 mm (Top/Left/Right) 20.70 mm (Bottom)
Adjustability		
Height adjustable stand	130 mm	
Tilt	-5° to 21°	
Swivel	-45° to 45°	
Pivot	-90° to 90°	
Dell Display Manager compatibility	Yes	
Security	Security lock slot (cable lock sold separately)	



Resolution specifications

Model	P2219H/P2319H/P2419H/P2719H
Horizontal scan range	30 kHz to 83 kHz (automatic)
Vertical scan range	56 Hz to 76 Hz (automatic)
Maximum preset resolution	1920 x 1080 at 60 Hz

Supported video modes

Model	P2219H/P2319H/P2419H/P2719H
Video display capabilities (VGA, HDMI & DP playback)	480i, 480p, 576i, 576p, 720p, 1080i, 1080p

Preset display modes

Display mode	Horizontal frequency (kHz)	Vertical frequency (Hz)	Pixel clock (MHz)	Sync polarity (Horizontal/Vertical)
VESA, 640 x 480	31.5	60.0	25.2	-/-
VESA, 640 x 480	37.5	75.0	31.5	-/-
IBM, 720 x 400	31.5	70.0	28.3	-/+
VESA, 800 x 600	37.9	60.0	40.0	+/+
VESA, 800 x 600	46.9	75.0	49.5	+/+
VESA, 1024 x 768	48.4	60.0	65.0	-/-
VESA, 1024 x 768	60.0	75.0	78.8	+/+
VESA, 1152 x 864	67.5	75.0	108.0	+/+
VESA, 1280 x 1024	64.0	60.0	108.0	+/+
VESA, 1280 x 1024	80.0	75.0	135.0	+/+
VESA, 1600 x 900	60.0	60.0	108.0	+/+
VESA, 1920 x 1080	67.5	60.0	148.5	+/+



Electrical specifications

Model	P2219H/P2319H/P2419H/P2719H	
Video input signals	<ul style="list-style-type: none"> • Analog RGB, 0.7 Volts +/- 5%, positive polarity at 75 ohm input impedance • HDMI 1.4, 600 mV for each differential line, 100 ohm input impedance per differential pair • DisplayPort 1.2, 600 mV for each differential line, 100 ohm input impedance per differential pair 	
AC input voltage/frequency/current	100 VAC to 240 VAC / 50 Hz or 60 Hz \pm 3 Hz / 1.5 A (typical)	
Inrush current	<ul style="list-style-type: none"> • 120 V: 30 A (Max.) at 0 °C (cold start) • 240 V: 60 A (Max.) at 0 °C (cold start) 	
Power consumption	P2219H	P2319H
	<ul style="list-style-type: none"> • 0.2 W (Off mode)¹ • 0.2 W (Standby Mode)¹ • 13.5 W (On mode)¹ • 36 W (Max.)² • 11.2 W (Pon)³ • 35.6 kWh (TEC)³ 	<ul style="list-style-type: none"> • 0.2 W (Off mode)¹ • 0.2 W (Standby Mode)¹ • 14.8 W (On mode)¹ • 40 W (Max.)² • 13.31 W (Pon)³ • 41.78 kWh (TEC)³
	P2419H	P2719H
	<ul style="list-style-type: none"> • 0.2 W (Off mode)¹ • 0.2 W (Standby Mode)¹ • 13.9 W (On mode)¹ • 42 W (Max.)² • 13.34 W (Pon)³ • 41.92 kWh (TEC)³ 	<ul style="list-style-type: none"> • 0.2 W (Off mode)¹ • 0.2 W (Standby Mode)¹ • 15.1 W (On mode)¹ • 58 W (Max.)² • 15 W (Pon)³ • 47.2 kWh (TEC)³

¹ As defined in EU 2019/2021 and EU 2019/2013.


² Max brightness and contrast setting with maximum power loading on all USB ports.

³ Pon: Power consumption of On mode as defined in Energy Star 8.0 version.
TEC: Total energy consumption in kWh as defined in Energy Star 8.0 version.



This document is informational only and reflects laboratory performance. Your product may perform differently, depending on the software, components and peripherals you ordered and shall have no obligation to update such information.

Accordingly, the customer should not rely upon this information in making decisions about electrical tolerances or otherwise. No warranty as to accuracy or completeness is expressed or implied.

 **NOTE: This monitor is ENERGY STAR certified. This product qualifies for ENERGY STAR in the factory default settings which can be restored by “Factory Reset” function in the OSD menu. Changing the factory default settings or enabling other features may increase power consumption that could exceed the ENERGY STAR specified limit.**



Physical characteristics

Model	P2219H	P2319H
Signal cable type	<ul style="list-style-type: none"> • Digital: DisplayPort, 20 pins • Digital: HDMI, 19 pins (cable not included, except for Brazil) • Analog: D-Sub, 15 pins (cable not included, except for Japan) • Universal Serial Bus: USB, 9 pins 	
Dimensions (with stand)		
Height (extended)	472.0 mm (18.58 inches)	481.1 mm (18.94 inches)
Height (compressed)	353.4 mm (13.91 inches)	351.1 mm (13.82 inches)
Width	487.3 mm (19.19 inches)	520.0 mm (20.47 inches)
Depth	166.0 mm (6.54 inches)	166.0 mm (6.54 inches)
Dimensions (without stand)		
Height	293.4 mm (11.55 inches)	311.7 mm (12.27 inches)
Width	487.3 mm (19.19 inches)	520.0 mm (20.47 inches)
Depth	41.3 mm (1.63 inches)	41.3 mm (1.63 inches)
Stand dimensions		
Height (extended)	400.8 mm (15.78 inches)	400.8 mm (15.78 inches)



Height (compressed)	353.4 mm (13.91 inches)	353.4 mm (13.91 inches)
Width	206.0 mm (8.11 inches)	206.0 mm (8.11 inches)
Depth	166.0 mm (6.54 inches)	166.0 mm (6.54 inches)
Base	206.0 mm x 166.0 mm (8.11 inches x 6.54 inches)	206.0 mm x 166.0 mm (8.11 inches x 6.54 inches)
Weight		
Weight with packaging	6.26 kg (13.80 lb)	7.00 kg (15.43 lb)
Weight with stand assembly and cables	4.72 kg (10.41 lb)	5.11 kg (11.27 lb)
Weight without stand assembly (For wall mount or VESA mount considerations - no cables)	2.75 kg (6.06 lb)	3.11 kg (6.86 lb)
Weight of stand assembly	1.62 kg (3.57 lb)	1.67 kg (3.68 lb)
Front frame gloss	2-4 (only front chin)	

Model	P2419H	P2719H
Signal cable type	<ul style="list-style-type: none"> • Digital: DisplayPort, 20 pins • Digital: HDMI, 19 pins (cable not included) • Analog: D-Sub, 15 pins (cable not included, except for Japan) • Universal Serial Bus: USB, 9 pins 	<ul style="list-style-type: none"> • Digital: DisplayPort, 20 pins • Digital: HDMI, 19 pins (cable not included, except for Brazil) • Analog: D-Sub, 15 pins (cable not included, except for Japan) • Universal Serial Bus: USB, 9 pins
Dimensions (with stand)		
Height (extended)	486.1 mm (19.14 inches)	524.3 mm (20.64 inches)
Height (compressed)	356.1 mm (14.02 inches)	394.3 mm (15.52 inches)
Width	537.8 mm (21.27 inches)	609.9 mm (24.01 inches)



Depth	166.0 mm (6.54 inches)	185.0 mm (7.28 inches)
Dimensions (without stand)		
Height	322.2 mm (12.68 inches)	363.0 mm (14.29 inches)
Width	537.8 mm (21.17 inches)	609.9 mm (24.01 inches)
Depth	42.8 mm (1.69 inches)	42.8 mm (1.69 inches)
Stand dimensions		
Height (extended)	400.8 mm (15.78 inches)	418.4 mm (16.47 inches)
Height (compressed)	353.4 mm (13.91 inches)	371.0 mm (14.61 inches)
Width	206.0 mm (8.11 inches)	245.0 mm (9.65 inches)
Depth	166.0 mm (6.54 inches)	185.0 mm (7.28 inches)
Base	206.0 mm x 166.0 mm (8.11 inches x 6.54 inches)	245.0 mm x 185.0 mm (9.65 inches x 7.28 inches)
Weight		
Weight with packaging	7.10 kg (15.65 lb)	9.05 kg (19.95 lb)
Weight with stand assembly and cables	5.25 kg (11.57 lb)	6.67 kg (14.70 lb)
Weight without stand assembly (For wall mount or VESA mount considerations - no cables)	3.26 kg (7.19 lb)	4.35 kg (9.59 lb)
Weight of stand assembly	1.67 kg (3.68 lb)	1.93 kg (4.25 lb)
Front frame gloss	2-4 (only front chin)	



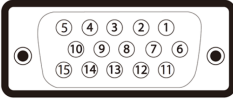
Environmental characteristics

Model	P2219H/P2319H/P2419H/P2719H
Compliant standards	
<ul style="list-style-type: none"> • ENERGY STAR certified monitor • EPEAT registered where applicable. EPEAT registration varies by country. See www.epeat.net for registration status by country. • RoHS-compliant • TCO certified displays • BFR/PVC free monitor (excluding external cables) • Arsenic-free glass and Mercury-free for the panel only 	
Temperature	
Operating	0 °C to 40 °C (32 °F to 104 °F)
Non-operating	<ul style="list-style-type: none"> • Storage: -20 °C to 60 °C (-4 °F to 140 °F) • Shipping: -20 °C to 60 °C (-4 °F to 140 °F)
Humidity	
Operating	20% to 80% (non-condensing)
Non-operating	<ul style="list-style-type: none"> • Storage: 10% to 90% (non-condensing) • Shipping: 10% to 90% (non-condensing)
Altitude	
Operating	5000 m (16404 ft) (maximum)
Non-operating	12192 m (40000 ft) (maximum)
Thermal dissipation	
P2219H	<ul style="list-style-type: none"> • 126.24 BTU/hour (maximum) • 58.00 BTU/hour (typical)
P2319H	<ul style="list-style-type: none"> • 136.58 BTU/hour (maximum) • 54.63 BTU/hour (typical)
P2419H	<ul style="list-style-type: none"> • 143.40 BTU/hour (maximum) • 61.46 BTU/hour (typical)
P2719H	<ul style="list-style-type: none"> • 197.95 BTU/hour (maximum) • 64.85 BTU/hour (typical)



Pin assignments

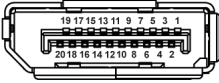
VGA connector



Pin number	15-pin side of the connected signal cable
1	Video-Red
2	Video-Green
3	Video-Blue
4	GND
5	Self-test
6	GND-R
7	GND-G
8	GND-B
9	Computer 5 V/3.3 V
10	GND-sync
11	GND
12	DDC data
13	H-sync
14	V-sync
15	DDC clock



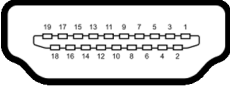
DisplayPort connector



Pin number	20-pin side of the connected signal cable
1	ML3 (n)
2	GND
3	ML3 (p)
4	ML2 (n)
5	GND
6	ML2 (p)
7	ML1 (n)
8	GND
9	ML1 (p)
10	ML0 (n)
11	GND
12	ML0 (p)
13	GND
14	GND
15	AUX (p)
16	GND
17	AUX (n)
18	Hot Plug Detect
19	Re-PWR
20	+3.3 V DP_PWR



HDMI connector



Pin number	19-pin side of the connected signal cable
1	TMDS DATA 2+
2	TMDS DATA 2 SHIELD
3	TMDS DATA 2-
4	TMDS DATA 1+
5	TMDS DATA 1 SHIELD
6	TMDS DATA 1-
7	TMDS DATA 0+
8	TMDS DATA 0 SHIELD
9	TMDS DATA 0-
10	TMDS CLOCK+
11	TMDS CLOCK SHIELD
12	TMDS CLOCK-
13	CEC
14	Reserved (N.C. on device)
15	DDC CLOCK (SCL)
16	DDC DATA (SDA)
17	DDC/CEC Ground
18	+5V POWER
19	HOT PLUG DETECT



Plug and play capability

You can install the monitor in any Plug and Play-compatible system. The monitor automatically provides the computer system with its Extended Display Identification Data (EDID) using Display Data Channel (DDC) protocols so that the system can configure itself and optimize the monitor settings. Most monitor installations are automatic; you can select different settings if desired. For more information about changing the monitor settings, see [Operating the monitor](#).

Universal Serial Bus (USB) interface

This section gives you information about the USB ports that are available on the monitor.

 **NOTE: This monitor is Super-Speed USB 3.0 and High-Speed USB 2.0 compatible.**

USB 3.0

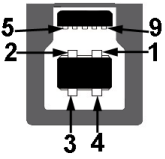
Transfer speed	Data rate	Power consumption
Super-speed	5 Gbps	4.5 W (Max, each port)
High speed	480 Mbps	4.5 W (Max, each port)
Full speed	12 Mbps	4.5 W (Max, each port)

USB 2.0

Transfer speed	Data rate	Power consumption
High speed	480 Mbps	2.5 W (Max, each port)
Full speed	12 Mbps	2.5 W (Max, each port)
Low speed	1.5 Mbps	2.5 W (Max, each port)



USB 3.0 upstream connector



Pin number	9-pin side of the connector
1	VCC
2	D-
3	D+
4	GND
5	SSTX-
6	SSTX+
7	GND
8	SSRX-
9	SSRX+

USB 3.0 downstream connector

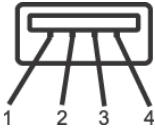


Pin number	9-pin side of the connector
1	VCC
2	D-
3	D+
4	GND
5	SSRX-



6	SSRX+
7	GND
8	SSTX-
9	SSTX+

USB 2.0 downstream connector




Pin number	4-pin side of the connector
1	VCC
2	DMD
3	DPD
4	GND

USB ports

- 1 upstream - bottom
- 2 downstream - bottom
- 2 downstream - side

 **NOTE: USB 3.0 functionality requires a USB 3.0-capable computer.**

 **NOTE: The USB ports on the monitor work only when the monitor is turned On or in Standby mode. If you turn Off the monitor and then turn it On, the attached peripherals may take a few seconds to resume normal functionality.**


LCD monitor quality and pixel policy


During the LCD Monitor manufacturing process, it is not uncommon for one or more pixels to become fixed in an unchanging state which are hard to see and do not affect the display quality or usability. For more information on Dell Monitor Quality and Pixel Policy, see www.dell.com/support/monitors.



Maintenance guidelines

Cleaning your monitor

 **CAUTION:** Read and follow the [Safety instructions](#) before cleaning the monitor.

 **WARNING:** Before cleaning the monitor, unplug the monitor power cable from the electrical outlet.



For best practices, follow the instructions in the list below when unpacking, cleaning, or handling your monitor:

- To clean your anti-static screen, lightly dampen a soft, clean cloth with water. If possible, use a special screen-cleaning tissue or solution suitable for the anti-static coating. Do not use benzene, thinner, ammonia, abrasive cleaners, or compressed air.
- Use a lightly-dampened, warm cloth to clean the monitor. Avoid using detergent of any kind as some detergents leave a milky film on the monitor.
- If you notice white powder when you unpack your monitor, wipe it off with a cloth.
- Handle your monitor with care as a darker-colored monitor may get scratched and show white scuff marks more than a lighter-colored monitor.
- To help maintain the best image quality on your monitor, use a dynamically changing screen saver and turn off your monitor when not in use.



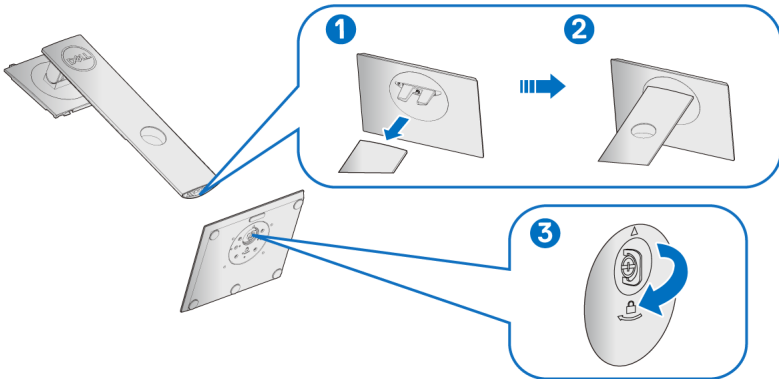
Setting up the monitor

Attaching the stand

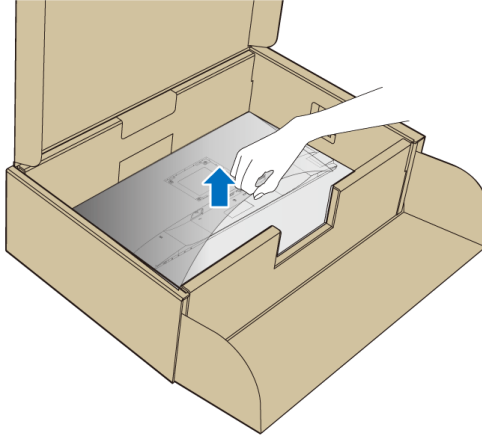
-  **NOTE:** The stand is not installed at the factory when shipped.
-  **NOTE:** The following instructions are applicable only for attaching the stand that was shipped with your monitor. If you are attaching a stand that you purchased from any other source, follow the set up instructions that were included with the stand.

To attach the monitor stand:

1. Follow the instructions on the flaps of carton to remove the stand from the top cushion that secures it.
2. Insert the stand base blocks fully into the stand slot.
3. Lift the screw handle and turn the screw clockwise.
4. After fully tightening the screw, fold the screw handle flat within the recess.

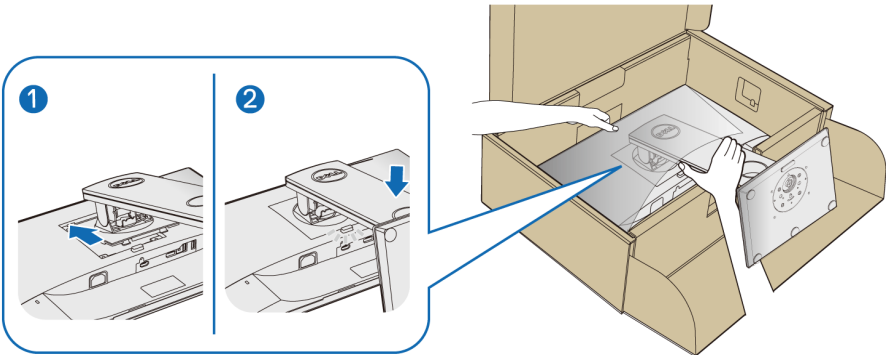


5. Lift the cover, as shown, to expose the VESA area for stand assembly.



6. Attach the stand assembly to the monitor.

- a. Fit the two tabs on the upper part of the stand to the groove on the back of the monitor.
- b. Press the stand down till it snaps into place.



7. Place the monitor upright.

NOTE: Lift the monitor carefully to prevent it from slipping or falling.



Connecting your monitor

⚠ WARNING: Before you begin any of the procedures in this section, follow the [Safety instructions](#).

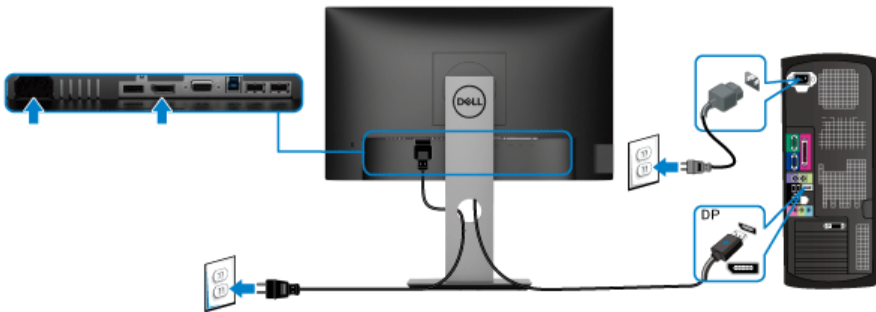
✍ NOTE: Route the cables through the cable-management slot before connecting them.

✍ NOTE: Do not connect all cables to the computer at the same time.

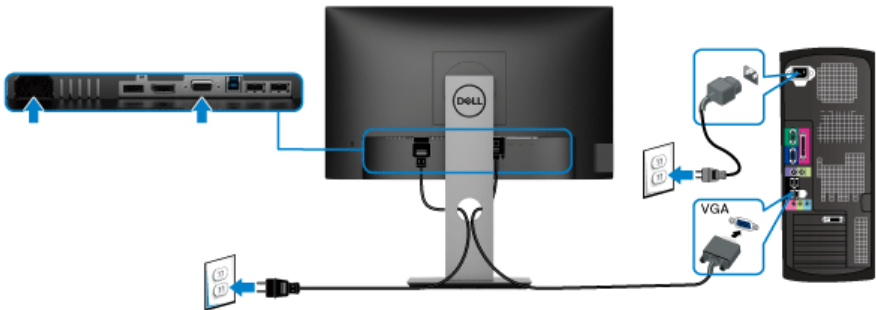
To connect your monitor to the computer:

1. Turn Off your computer and disconnect the power cable.
2. Connect the VGA, DisplayPort or HDMI cable from your monitor to the computer.

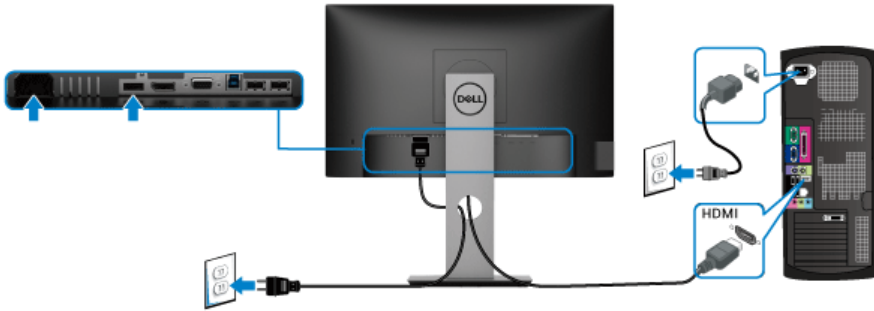
Connecting the DisplayPort (DisplayPort to DisplayPort) cable



Connecting the VGA cable (optional)



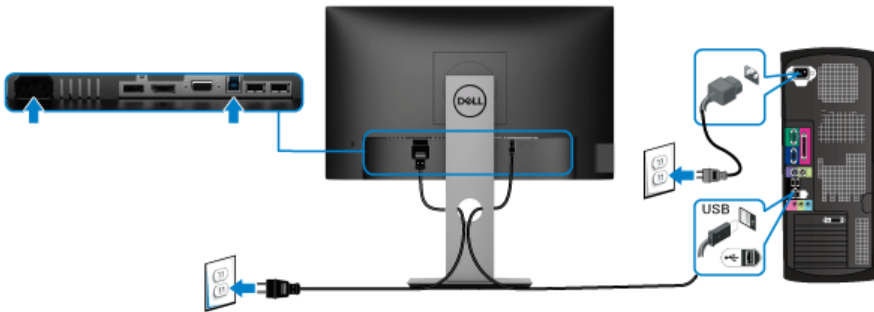
Connecting the HDMI cable (optional)



NOTE: The graphics are used for the purpose of illustration only. Appearance of the computer may vary.

Connecting the USB 3.0 cable

After you have completed connecting the VGA/DisplayPort/HDMI cable, follow the procedures below to connect the USB 3.0 cable to the computer and complete your monitor setup:



1. Connect the upstream USB 3.0 port (cable supplied) to an appropriate USB 3.0 port on your computer. (See [Bottom view](#) for details.)
2. Connect the USB 3.0 peripherals to the downstream USB 3.0 ports on the monitor.
3. Plug the power cables for your computer and monitor into a nearby outlet.

NOTE: Use the cable slot on the monitor stand to organize the cables.

4. Turn On the monitor and the computer.
If your monitor displays an image, installation is complete. If it does not display an image, see [Universal Serial Bus \(USB\) specific problems](#).



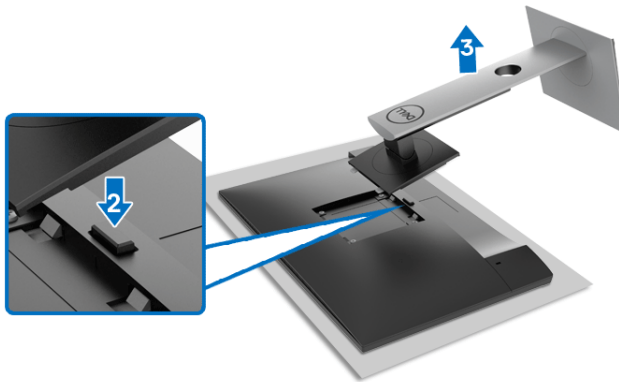
Organizing your cables



After attaching all necessary cables to your monitor and computer, (See [Connecting your monitor](#) for cable attachment,) organize all cables as shown above.

Removing the monitor stand

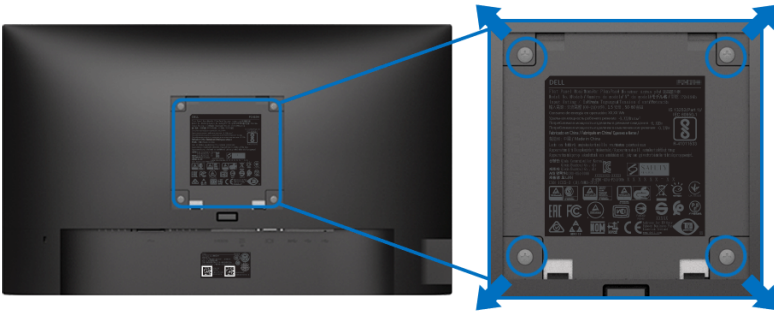
- ✎ **NOTE:** To prevent scratches on the LCD screen when removing the stand, ensure that the monitor is placed on a soft, clean surface.
- ✎ **NOTE:** The following instructions are applicable only for attaching the stand that was shipped with your monitor. If you are attaching a stand that you purchased from any other source, follow the set up instructions that were included with the stand.



To remove the stand:

1. Place the monitor on a soft cloth or cushion.
2. Press and hold the stand release button.
3. Lift the stand up and away from the monitor.

VESA wall mounting (optional)



(Screw dimension: M4 x 10 mm).

Refer to the instructions that come with the VESA-compatible wall mounting kit.

1. Place the monitor panel on a soft cloth or cushion on a stable flat table.
2. Remove the stand. (See [Removing the monitor stand](#))
3. Use a Phillips crosshead screwdriver to remove the four screws securing the plastic cover.
4. Attach the mounting bracket from the wall mounting kit to the monitor.
5. Mount the monitor on the wall. For more information, see the documentation that shipped with the wall mounting kit.

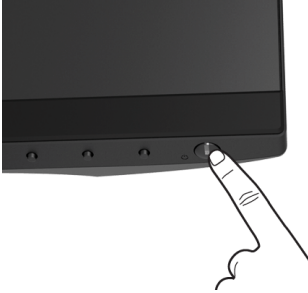
NOTE: For use only with with UL or CSA or GS-listed wall mount bracket with minimum weight or load bearing capacity of 11.00 kg (P2219H) / 12.44 kg (P2319H) / 13.04 kg (P2419H) / 17.40 kg (P2719H).



Operating the monitor

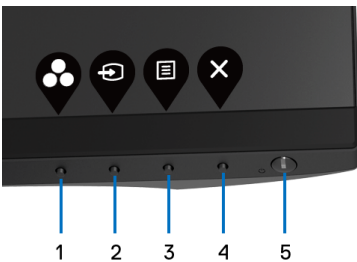
Power on the monitor

Press the Power button to turn On the monitor.





Using the front-panel controls




Use the control buttons on the front of the monitor to adjust settings.



The following table describes the front-panel buttons:

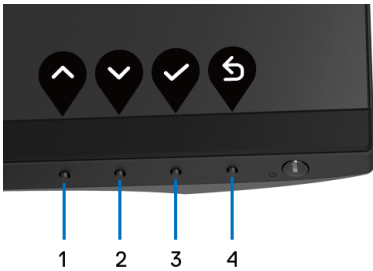
Front-panel button	Description
1  Shortcut key/ Preset Modes	Use this button to choose from a list of preset color modes.
2  Shortcut key/ Input Source	Use this button to choose from a list of video signals that may be connected to your monitor.







3	 Menu	Use the MENU button to launch the On-Screen Display (OSD). See Accessing the menu system .
4	 Exit	Use this button to exit the OSD main menu.
5	 Power (with power light indicator)	To turn the monitor on or off. Solid white light indicates that the monitor is turned on and functioning normally. Blinking white light indicates that the monitor is in Standby Mode.

Front-panel button

Use the buttons on the front of the monitor to adjust the image settings.





Front-panel button	Description
1  Up	Use the Up button to adjust (increase ranges) items in the OSD menu.
2  Down	Use the Down button to adjust (decrease ranges) items in the OSD menu.
3  OK	Use the OK button to confirm your selection.
4  Back	Use the Back button to go back to the previous menu.



Using the On-Screen Display (OSD) menu










Accessing the menu system

 **NOTE:** If you change the settings and then either proceed to another menu or exit the OSD menu, the monitor automatically saves those changes. The changes are also saved if you change the settings and then wait for the OSD menu to disappear.








1. Press the  button to launch the OSD menu and display the main menu.



 **NOTE:** Auto Adjust is only available when you use the analog (VGA) connector.

2. Press the  and  buttons to move between the setting options. As you move from one icon to another, the option name is highlighted. See the following table for a complete list of all the options available for the monitor.
3. Press the  or  or  button once to activate the highlighted option.
4. Press the  and  buttons to select the desired parameter.
5. Press  to enter the submenu and then use the directional buttons, according to the indicators on the menu, to make your changes.
6. Select the  button to return to the main menu.



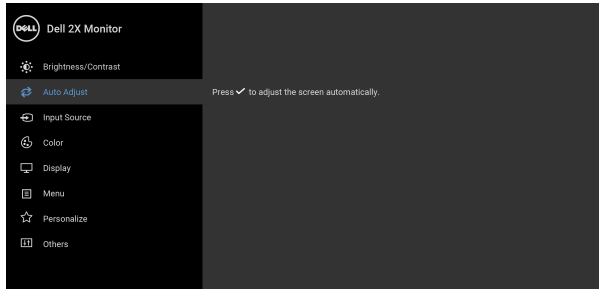
Icon	Menu and Submenus	Description
	Brightness/Contrast	Use this menu to activate Brightness/Contrast adjustment.
		
		
Brightness	<p>Brightness adjusts the luminance of the backlight.</p> <p>Press the  button to increase the brightness and press the  button to decrease the brightness (min. 0 / max. 100).</p> <p>NOTE: Manual adjustment of Brightness is disabled when Dynamic Contrast is switched On.</p>	
Contrast	<p>Adjust the Brightness first, and then adjust the Contrast only if further adjustment is necessary.</p> <p>Press the  button to increase the contrast and press the  button to decrease the contrast (min. 0 / max. 100).</p> <p>The Contrast function adjusts the degree of difference between darkness and lightness on the monitor screen.</p>	





Auto Adjust

Use this menu to activate automatic setup and adjust menu.



Auto Adjust allows the monitor to self-adjust to the incoming video signal. After using **Auto Adjust**, you can further tune your monitor by using the **Pixel Clock** (Coarse) and **Phase** (Fine) controls under **Display** settings.

Auto Adjustment in Progress...

NOTE: In most cases, **Auto Adjust** produces the best image for your configuration.

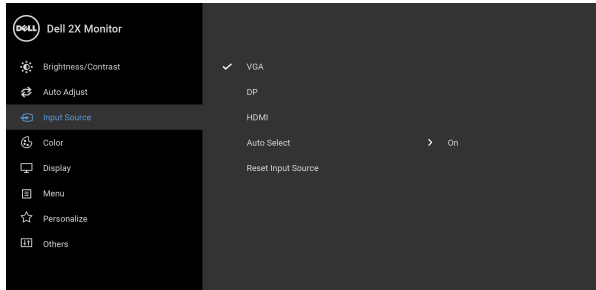
NOTE: **Auto Adjust** option is only available when you are using the analog (VGA) connector.





Input Source

Use the **Input Source** menu to select between the different video signals that may be connected to your monitor.



VGA

Select the **VGA** input when you are using the analog (VGA) connector.

DP

Select the **DP** input when you are using the DisplayPort (DP) connector.

HDMI

Select the **HDMI** input when you are using the HDMI connector.

Auto Select

Turning on the function allows you to scan for available input sources.

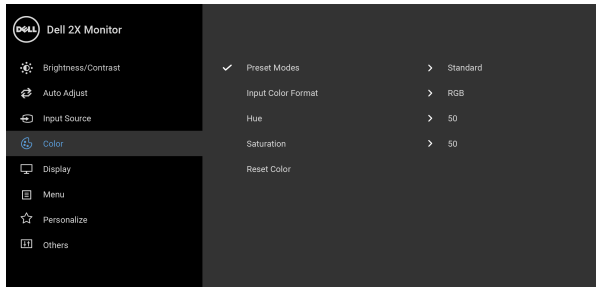
Reset Input Source

Reset your monitor input settings to the factory settings.



Color

Use **Color** to adjust the color setting mode.



Preset Modes Allows you to choose from a list of preset color modes.

- **Standard:** Loads the monitor's default color settings. This is the default preset mode.
- **ComfortView:** Decreases the level of blue light emitted from the screen to make viewing more comfortable for your eyes.

WARNING: The possible long-term effects of blue light emission from the monitor may cause personal injury such as digital eye strain, eye fatigue and damage to the eyes. Using monitor for extended periods of time may also cause pain in parts of body such as neck, arm, back and shoulder.



To reduce the risk of eye strain and neck/arm/back/shoulder pain from using the monitor for long periods of time, we suggest you to:

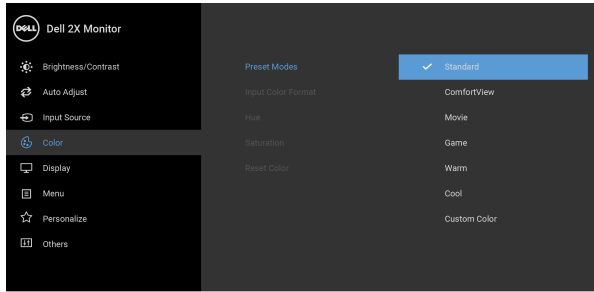
1. Set the distance of the screen between 20 to 28 inches (50 - 70 cm) from your eyes.
 2. Blink frequently to moisten your eyes or wet your eyes with water after prolonged usage of the monitor.
 3. Take regular and frequent breaks for 20 minutes every two hours.
 4. Look away from your monitor and gaze at a distant object at 20 feet away for at least 20 seconds during the breaks.
 5. Perform stretches to relieve tension in the neck, arm, back, and shoulders during the breaks.
- **Movie:** Loads color settings ideal for movies.
 - **Game:** Loads color settings ideal for most gaming applications.
 - **Warm:** Increases the color temperature. The screen appears warmer with a red/yellow tint.
 - **Cool:** Decreases the color temperature. The screen appears cooler with a blue tint.
-



Preset Modes

- **Custom Color:** Allows you to manually adjust the color settings.

Use the  and  buttons to adjust the three colors (R, G, B) values and create your own preset color mode.

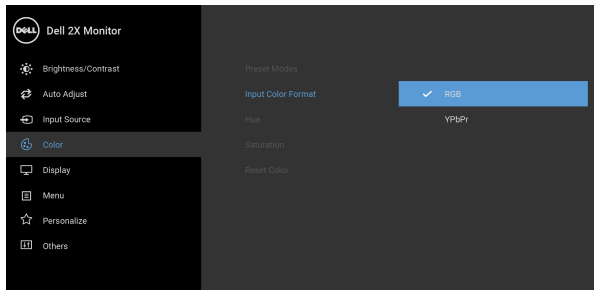


Input Color Format



Allows you to set the video input mode to:

RGB: Select this option if your monitor is connected to a computer (or DVD player) using the DisplayPort or HDMI cable.

YPbPr: Select this option if your DVD player supports only YPbPr output.





Hue

This feature can shift the color of the video image to green or purple. This is used to adjust the desired flesh tone color. Use  or  to adjust the hue from '0' to '100'.

NOTE: Hue adjustment is available only when you select **Movie** or **Game** preset mode.

Saturation

This feature can adjust the color saturation of the video image. Use  or  to adjust the saturation from '0' to '100'.

NOTE: Saturation adjustment is available only when you select **Movie** or **Game** preset mode.

Reset Color

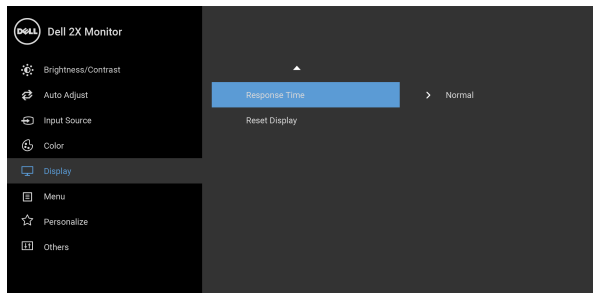
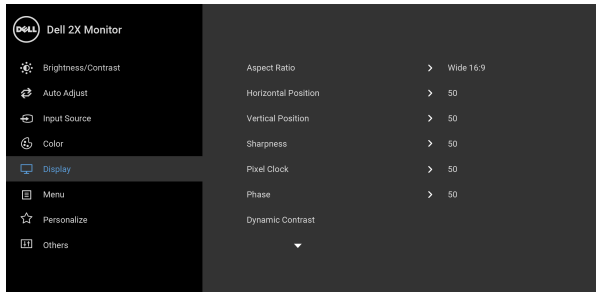
Reset your monitor's color settings to the factory settings.





Display



Use **Display** to adjust image.





Aspect Ratio

Adjusts the image ratio to **Wide 16:9**, **4:3**, or **5:4**.

Horizontal Position

Use  or  to adjust the image left or right.
Minimum is '0' (-).
Maximum is '100' (+).

Vertical Position



Use  or  to adjust the image up or down.
Minimum is '0' (-).
Maximum is '100' (+).

NOTE: Horizontal Position and **Vertical Position** adjustments are only available for VGA input.





Sharpness

This feature can make the image look sharper or softer.

Use  or  to adjust the sharpness from '0' to '100'.

Pixel Clock

The **Phase** and **Pixel Clock** adjustments allow you to adjust your monitor to your preference.

Use  or  to adjust for best image quality.

Phase

If satisfactory results are not obtained using the **Phase** adjustment, use the **Pixel Clock** (coarse) adjustment and then use **Phase** (fine), again.

NOTE: Pixel Clock and **Phase** adjustments are only available for VGA input.

Dynamic Contrast

Allows you to increase the level of contrast to provide sharper and more detailed image quality.

Use  to enter the submenu. Then use  to turn on or turn off the **Dynamic Contrast** function.

NOTE: Dynamic Contrast provides higher contrast if you select **Game** or **Movie** preset mode.

Response Time

Allows you to set the **Response Time** to **Normal** or **Fast**.

Reset Display

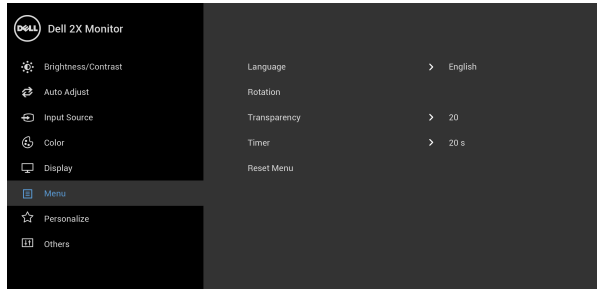
Select this option to restore default display settings.





Menu

Select this option to adjust the settings of the OSD, such as, the languages of the OSD, the amount of time the menu remains on screen, and so on.





Language

Sets the OSD display to one of the eight languages (English, Spanish, French, German, Brazilian Portuguese, Russian, Simplified Chinese, or Japanese).

Rotation



Rotates the OSD by 90 degrees counter-clockwise. You can adjust the menu according to your [Display Rotation](#).

Transparency

Select this option to change the menu transparency by pressing the  and  buttons (min. 0 / max. 100).

Timer

Sets the length of time the OSD will remain active after the last time you pressed a button.

Use  or  to adjust the slider in 1 second increments, from 5 to 60 seconds.

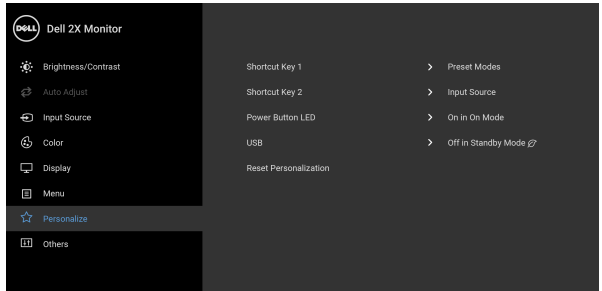
Reset Menu

Reset all OSD settings to the factory preset values.





Personalize



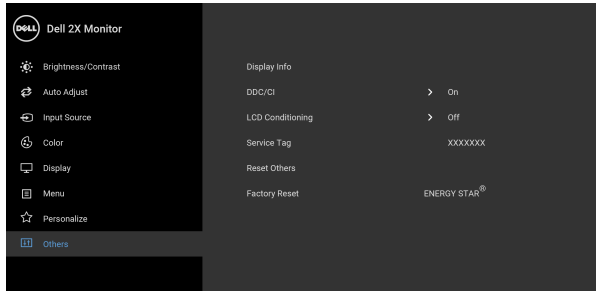
Shortcut Key 1	Allows you to choose a feature from Preset Modes , Brightness/Contrast , Auto Adjust , Input Source , Aspect Ratio , or Rotation and set it as a shortcut key.
Shortcut Key 2	
Power Button LED	Allows you to set the power LED indicator On or Off to save energy.
USB	Allows you to enable or disable USB function during monitor standby mode. NOTE: USB ON/OFF under standby mode is only available when the USB upstream cable is unplugged. This option will be greyed out when the USB upstream cable plugs in.
Reset Personalization	Reset all settings under the Personalize menu to the factory preset values.





Others

Select this option to adjust the OSD settings, such as **DDC/CI**, **LCD Conditioning**, and so on.

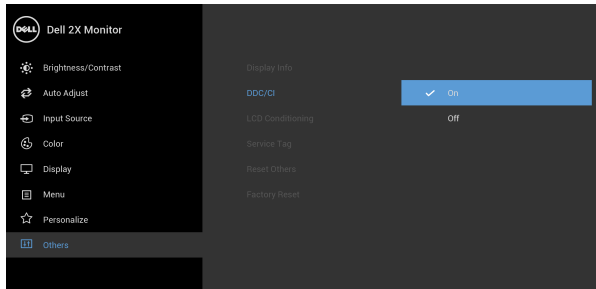


Display Info

Displays the monitor's current settings.

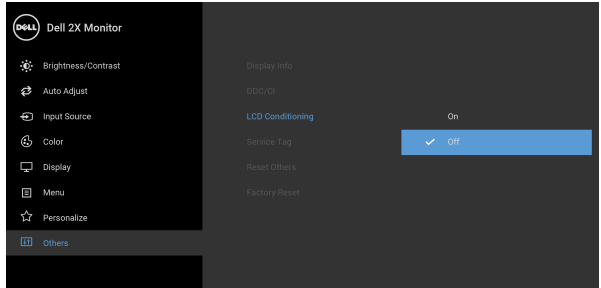
DDC/CI

DDC/CI (Display Data Channel/Command Interface) allows your monitor parameters (brightness, color balance, and etc.) to be adjustable via the software on your computer. You can disable this feature by selecting **Off**. Enable this feature for best user experience and optimum performance of your monitor.



LCD Conditioning

Helps reduce minor cases of image retention. Depending on the degree of image retention, the program may take some time to run. You can enable this feature by selecting **On**.



Service Tag

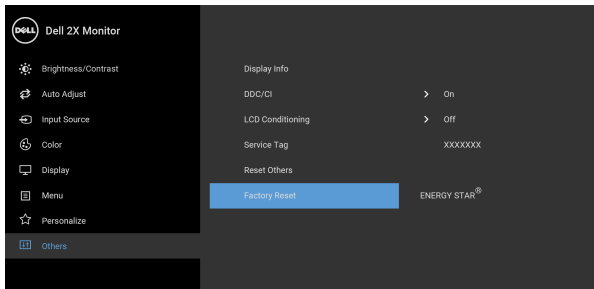
Displays the service tag of your monitor. This string is required when you look for phone support, check your warranty status, update drivers on Dell's website, etc.

Reset Others

Reset all settings under the **Others** menu to the factory preset values.

Factory Reset

Restore all preset values to the factory default settings. These are also the settings for ENERGY STAR® tests.

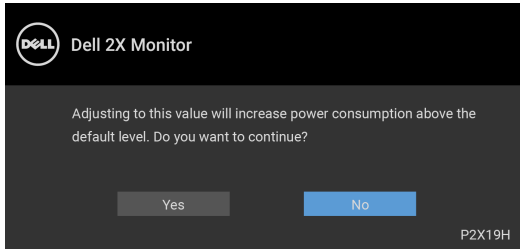


NOTE: This monitor has a built-in feature to automatically calibrate the brightness to compensate for LED aging.



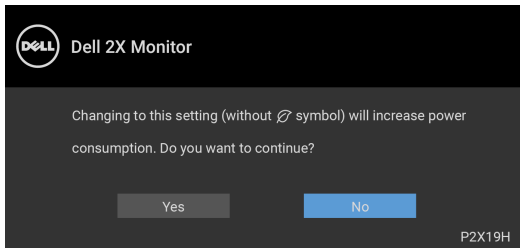
OSD warning message

When you adjust the **Brightness** level for the first time, the following message appears:



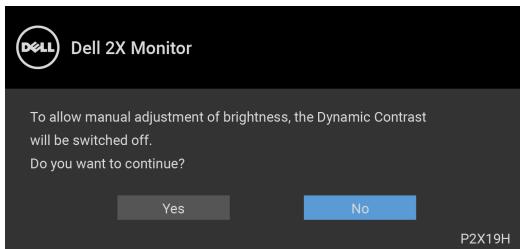
NOTE: If you select **Yes**, the message will not appear next time when you intend to change the **Brightness** setting.

When **USB** is set to **On in Standby Mode** for the first time, the following message appears:

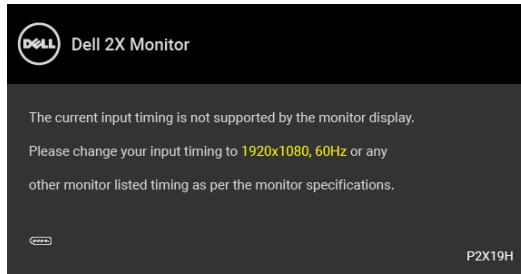


NOTE: If you select **Yes**, the message will not appear next time when you intend to change the **USB** setting.

When the **Dynamic Contrast** feature is enabled (in these preset modes: **Game** or **Movie**), manual brightness adjustment is disabled.



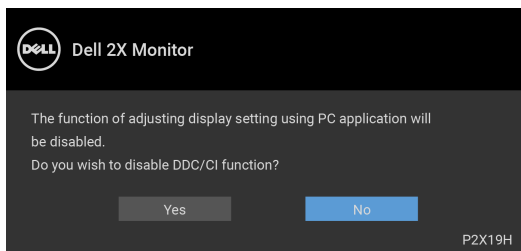
When the monitor does not support a particular resolution mode, you will see the following message:



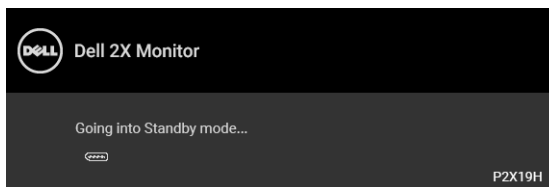
This means that the monitor cannot synchronize with the signal that it is receiving from the computer. See [Monitor specifications](#) for the Horizontal and Vertical frequency ranges addressable by this monitor. Recommended mode is 1920 x 1080.

NOTE: The message may be slightly different according to the connected input signal.

You will see the following message before the DDC/CI function is disabled:



When the monitor goes into Standby mode, the following message appears:

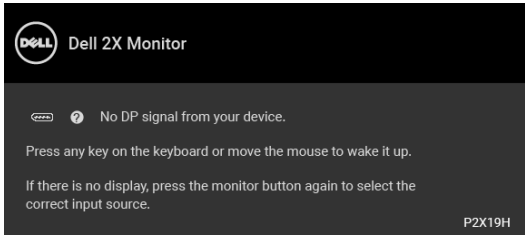


NOTE: The message may be slightly different according to the connected input signal.

Activate the computer and wake up the monitor to gain access to the [OSD](#).



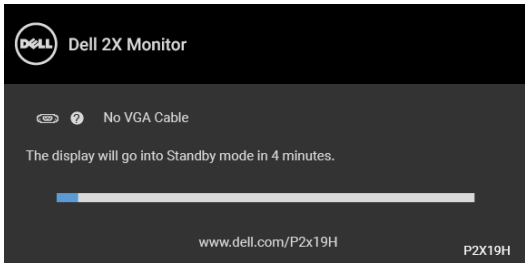
The OSD functions only in the normal operation mode. If you press any button other than the power button during the Standby mode, the following message will appear depending on the selected input:



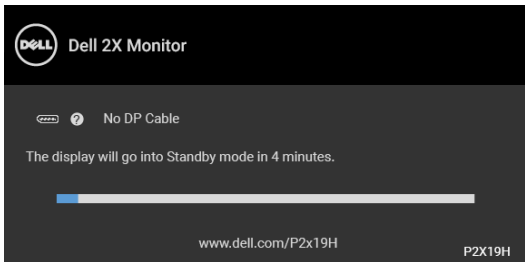
Activate the computer and the monitor to gain access to the OSD.

NOTE: The message may be slightly different according to the connected input signal.

If either VGA, HDMI, or DisplayPort input is selected and the corresponding cable is not connected, a floating dialog box as shown below appears.

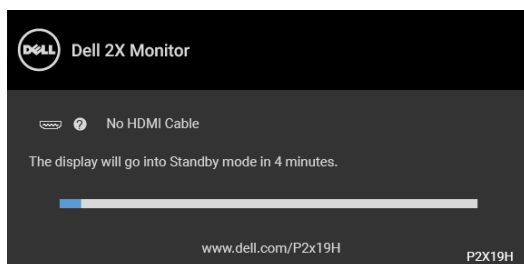


or



or





See [Troubleshooting](#) for more information.

Setting the maximum resolution

To set the maximum resolution for the monitor:

In Windows[®] 7, Windows[®] 8, and Windows[®] 8.1:

1. For Windows[®] 8 and Windows[®] 8.1 only, select the Desktop tile to switch to classic desktop.
2. Right-click on the desktop and click **Screen Resolution**.
3. Click the dropdown list of the **Screen Resolution** and select **1920 x 1080**.
4. Click **OK**.

In Windows[®] 10:

1. Right-click on the desktop and click **Display settings**.
2. Click **Advanced display settings**.
3. Click the dropdown list of **Resolution** and select **1920 x 1080**.
4. Click **Apply**.

If you do not see 1920 x 1080 as an option, you may need to update your graphics driver. Depending on your computer, complete one of the following procedures:

If you have a Dell desktop or portable computer:

- Go to <http://www.dell.com/support>, enter your service tag, and download the latest driver for your graphics card.

If you are using a non-Dell computer (portable or desktop):

- Go to the support site for your computer and download the latest graphic drivers.
- Go to your graphics card website and download the latest graphic drivers.

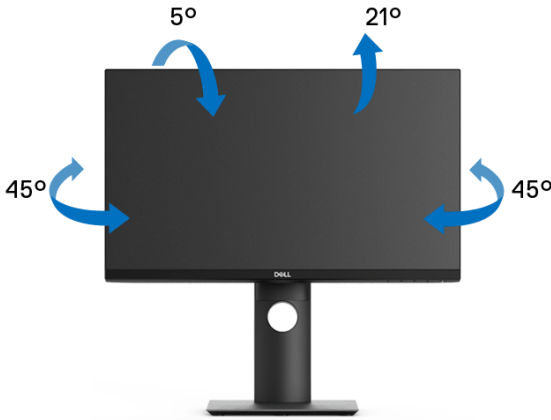


Using the tilt, swivel, and vertical extension

NOTE: The following instructions are applicable only for attaching the stand that was shipped with your monitor. If you are attaching a stand that you purchased from any other source, follow the set up instructions that were included with the stand.

Tilt, swivel

With the stand attached to the monitor, you can tilt and swivel the monitor for the most comfortable viewing angle.

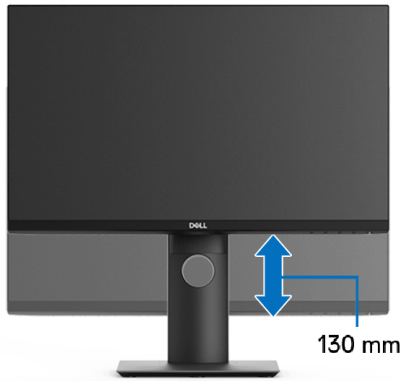


NOTE: The stand is not installed at the factory when shipped.



Vertical extension

 **NOTE:** The stand extends vertically up to 130 mm. The figure below illustrates how to extend the stand vertically.



Rotating the monitor

Before you rotate the monitor, your monitor should be fully vertically extended ([Vertical extension](#)) and fully tilted up to avoid hitting the bottom edge of the monitor.




Rotate clockwise



Rotate counterclockwise




 **NOTE:** To use the Display Rotation function (Landscape versus Portrait view) with your Dell computer, you require an updated graphics driver that is not included with this monitor. To download the graphics driver, go to www.dell.com/support and see the Download section for Video Drivers for latest driver updates.

 **NOTE:** When in the Portrait View Mode, you may experience performance degradation in graphic-intensive applications (3D Gaming and etc.).




Adjusting the rotation display settings of your system

After you have rotated your monitor, you need to complete the procedure below to adjust the Rotation Display Settings of your system.

 **NOTE: If you are using the monitor with a non-Dell computer, you need to go to the graphics driver website or your computer manufacturer website for information on rotating the 'contents' on your display.**

To adjust the Rotation Display Settings:

1. Right-click on the desktop and click **Properties**.
2. Select the **Settings** tab and click **Advanced**.
3. If you have an ATI graphics card, select the **Rotation** tab and set the preferred rotation.
4. If you have an nVidia graphics card, click the **nVidia** tab, in the left-hand column select **NVRotate**, and then select the preferred rotation.
5. If you have an Intel[®] graphics card, select the **Intel** graphics tab, click **Graphic Properties**, select the **Rotation** tab, and then set the preferred rotation.

 **NOTE: If you do not see the rotation option or it is not working correctly, go to www.dell.com/support and download the latest driver for your graphics card.**



Troubleshooting

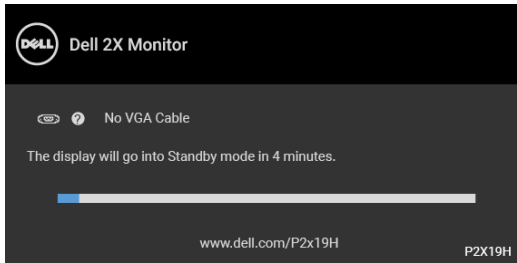
⚠ WARNING: Before you begin any of the procedures in this section, follow the [Safety instructions](#).

Self-test

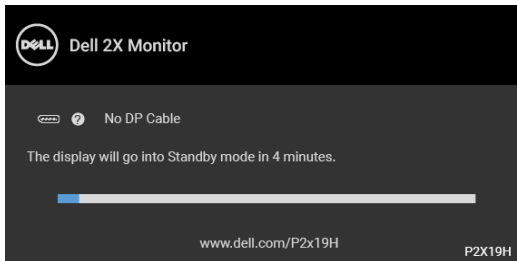
Your monitor provides a self-test feature that allows you to check whether your monitor is functioning properly. If your monitor and computer are properly connected but the monitor screen remains dark, run the monitor self-test by performing the following steps:

1. Turn off both your computer and the monitor.
2. Unplug the video cable from the back of the computer.
3. Turn on the monitor.

The floating dialog box should appear on-screen (against a black background), if the monitor cannot sense a video signal and is working correctly. While in self-test mode, the power LED remains white. Also, depending upon the selected input, one of the dialogs shown below will continuously scroll through the screen.

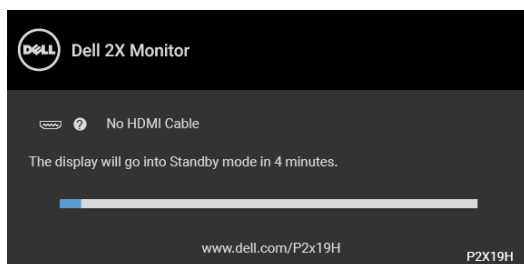


or



or





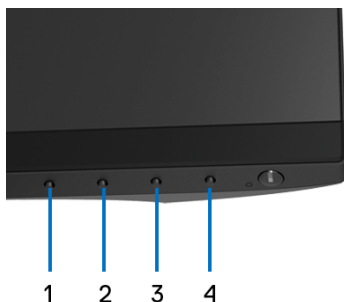
4. This box also appears during normal system operation, if the video cable becomes disconnected or damaged.
5. Turn Off your monitor and reconnect the video cable; then turn On both your computer and the monitor.

If your monitor screen remains blank after you use the previous procedure, check your video controller and computer, because your monitor is functioning properly.

Built-in diagnostics

Your monitor has a built-in diagnostic tool that helps you determine if the screen abnormality you are experiencing is an inherent problem with your monitor, or with your computer and video card.

 **NOTE: You can run the built-in diagnostics only when the video cable is unplugged and the monitor is in self-test mode.**



To run the built-in diagnostics:

1. Ensure that the screen is clean (no dust particles on the surface of the screen).
2. Unplug the video cable(s) from the back of the computer or monitor. The monitor then goes into the self-test mode.



3. Press and hold **Button 1** on the front panel for 5 seconds. A gray screen appears.
4. Carefully inspect the screen for abnormalities.
5. Press **Button 1** on the front panel again. The color of the screen changes to red.
6. Inspect the display for any abnormalities.
7. Repeat steps 5 and 6 to inspect the display in green, blue, black, white, and text screens.

The test is complete when the text screen appears. To exit, press **Button 1** again. If you do not detect any screen abnormalities upon using the built-in diagnostic tool, the monitor is functioning properly. Check the video card and computer.

Common problems

The following table contains general information about common monitor problems you might encounter and the possible solutions:

Common symptoms	What you experience	Possible solutions
No Video/Power LED off	No picture	<ul style="list-style-type: none"> • Ensure that the video cable connecting the monitor and the computer is properly connected and secure. • Verify that the power outlet is functioning properly using any other electrical equipment. • Ensure that the power button is pressed fully. • Ensure that the correct input source is selected in the Input Source menu.



No Video/Power LED on	No picture or no brightness	<ul style="list-style-type: none"> • Increase brightness & contrast controls via OSD. • Perform monitor self-test feature check. • Check for bent or broken pins in the video cable connector. • Run the built-in diagnostics. • Ensure that the correct input source is selected in the Input Source menu.
Poor Focus	Picture is fuzzy, blurry, or ghosting	<ul style="list-style-type: none"> • Perform Auto Adjust via OSD. • Adjust the Phase and Pixel Clock controls via OSD. • Eliminate video extension cables. • Reset the monitor to factory settings. • Change the video resolution to the correct aspect ratio.
Shaky/Jittery Video	Wavy picture or fine movement	<ul style="list-style-type: none"> • Perform Auto Adjust via OSD. • Adjust the Phase and Pixel Clock controls via OSD. • Reset the monitor to factory settings. • Check environmental factors. • Relocate the monitor and test in another room.
Missing Pixels	LCD screen has spots	<ul style="list-style-type: none"> • Cycle power On-Off. • Pixel that is permanently Off is a natural defect that can occur in LCD technology. • For more information on Dell Monitor Quality and Pixel Policy, see Dell Support site at: http://www.dell.com/support/monitors.



Stuck-on Pixels	LCD screen has bright spots	<ul style="list-style-type: none"> • Cycle power On-Off. • Pixel that is permanently off is a natural defect that can occur in LCD technology. • For more information on Dell Monitor Quality and Pixel Policy, see Dell Support site at: http://www.dell.com/support/monitors.
Brightness Problems	Picture too dim or too bright	<ul style="list-style-type: none"> • Reset the monitor to factory settings. • Perform Auto Adjust via OSD. • Adjust brightness & contrast controls via OSD.
Geometric Distortion	Screen not centered correctly	<ul style="list-style-type: none"> • Reset the monitor to factory settings. • Perform Auto Adjust via OSD. • Adjust horizontal & vertical controls via OSD. • When using HDMI/DisplayPort input, the positioning adjustments are not available.
Horizontal/Vertical Lines	Screen has one or more lines	<ul style="list-style-type: none"> • Reset the monitor to factory settings. • Perform Auto Adjust via OSD. • Adjust the Phase and Pixel Clock controls via OSD. • Perform monitor self-test feature check and determine if these lines are also in self-test mode. • Check for bent or broken pins in the video cable connector. • Run the built-in diagnostics. • When using HDMI/DisplayPort input, the Pixel Clock and Phase adjustments are not available.




Synchronization Problems	Screen is scrambled or appears torn	<ul style="list-style-type: none"> Reset the monitor to factory settings. Perform Auto Adjust via OSD. Adjust the Phase and Pixel Clock controls via OSD. Perform monitor self-test feature check to determine if the scrambled screen appears in self-test mode. Check for bent or broken pins in the video cable connector. Restart the computer in the safe mode.
Safety Related Issues	Visible signs of smoke or sparks	<ul style="list-style-type: none"> Do not perform any troubleshooting steps. Contact Dell immediately.
Intermittent Problems	Monitor malfunctions on & off	<ul style="list-style-type: none"> Ensure that the video cable connecting the monitor to the computer is connected properly and is secure. Reset the monitor to factory settings. Perform monitor self-test feature check to determine if the intermittent problem occurs in self-test mode.
Missing Color	Picture missing color	<ul style="list-style-type: none"> Perform monitor self-test feature check. Ensure that the video cable connecting the monitor to the computer is connected properly and is secure. Check for bent or broken pins in the video cable connector.



Wrong Color	Picture color not good	<ul style="list-style-type: none"> Change the settings of the Preset Modes in the Color menu OSD depending on the application. Adjust R/G/B value under Custom Color in Color menu OSD. Run the built-in diagnostics.
Image retention from a static image left on the monitor for a long period of time	Faint shadow from the static image displayed appears on the screen	<ul style="list-style-type: none"> Set the screen to turn off after a few minutes of screen idle time. These can be adjusted in Windows Power Options or Mac Energy Saver setting. Alternatively, use a dynamically changing screensaver.

Product specific problems

Common symptoms	What you experience	Possible solutions
Screen image is too small	Image is centered on screen, but does not fill entire viewing area	<ul style="list-style-type: none"> Check the Aspect Ratio setting in the Display menu OSD. Reset the monitor to factory settings.
No Input Signal when user controls are pressed	No picture, the LED light is white	<ul style="list-style-type: none"> Check the signal source. Ensure the computer is not in the power saving mode by moving the mouse or pressing any key on the keyboard. Check whether the signal cable is plugged in properly. Re-plug the signal cable if necessary. Reset the computer or video player.
The picture does not fill the entire screen	The picture cannot fill the height or width of the screen	<ul style="list-style-type: none"> Due to different video formats (aspect ratio) of DVDs, the monitor may display in full screen. Run the built-in diagnostics.

 **NOTE: When choosing HDMI/DisplayPort mode, the Auto Adjust function will not be available.**



Universal Serial Bus (USB) specific problems

Common symptoms	What you experience	Possible solutions
USB interface is not working	USB peripherals are not working	<ul style="list-style-type: none"> • Check that your monitor is turned On. • Reconnect the upstream cable to your computer. • Reconnect the USB peripherals (downstream connector). • Switch Off and then turn On the monitor again. • Reboot the computer. • Some USB devices like external portable HDD require higher electric current; connect the device directly to the computer system.
Super Speed USB 3.0 interface is slow	Super Speed USB 3.0 peripherals working slowly or not working at all	<ul style="list-style-type: none"> • Check that your computer is USB 3.0-capable. • Some computers have USB 3.0, USB 2.0, and USB 1.1 ports. Ensure that the correct USB port is used. • Reconnect the upstream cable to your computer. • Reconnect the USB peripherals (downstream connector). • Reboot the computer.
Wireless USB peripherals stop working when a USB 3.0 device is plugged in	Wireless USB peripherals responding slowly or only working as the distance between itself and its receiver decreases	<ul style="list-style-type: none"> • Increase the distance between the USB 3.0 peripherals and the wireless USB receiver. • Position your wireless USB receiver as close as possible to the wireless USB peripherals. • Use a USB-extender cable to position the wireless USB receiver as far away as possible from the USB 3.0 port.



Appendix

WARNING: Safety instructions

 **WARNING: Use of controls, adjustments, or procedures other than those specified in this documentation may result in exposure to shock, electrical hazards, and/or mechanical hazards.**

For information on safety instructions, see the Safety, Environmental, and Regulatory Information (SERI).

FCC notices (U.S. only) and other regulatory information

For FCC notices and other regulatory information, see the regulatory compliance website located at www.dell.com/regulatory_compliance.

Contact Dell

For customers in the United States, call 800-WWW-DELL (800-999-3355).

 **NOTE: If you do not have an active Internet connection, you can find contact information on your purchase invoice, packing slip, bill, or Dell product catalog.**

Dell provides several online and telephone-based support and service options. Availability varies by country and product, and some services may not be available in your area.

- Online technical assistance — www.dell.com/support/monitors
- Contacting Dell — www.dell.com/contactdell

EU product database for energy label and product information sheet

P2219H: <https://eprel.ec.europa.eu/qr/344547>

P2219H WOST: <https://eprel.ec.europa.eu/qr/346941>

P2319H: <https://eprel.ec.europa.eu/qr/344570>

P2419H: <https://eprel.ec.europa.eu/qr/344927>

P2419H WOST: <https://eprel.ec.europa.eu/qr/346050>

P2719H: <https://eprel.ec.europa.eu/qr/344588>

