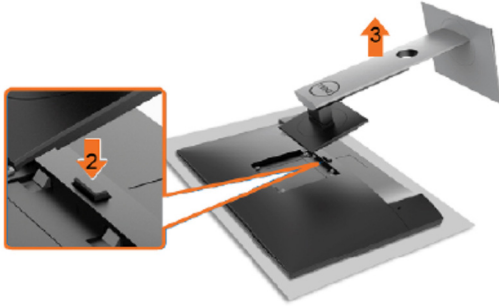


1. Disassembly Procedures

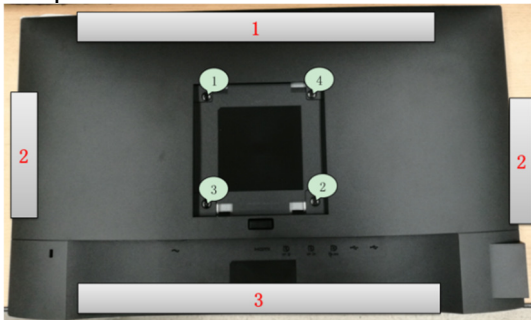
S1 Turn off power

S2 Place the monitor on a soft cloth or cushion.
Press and hold the stand-release button.
Lift the stand up and away from the monitor.



S3 Unlock 4 Rear Cover screws.

Disassemble Rear Cover and Middle Frame according to the sequence as the picture showed



(Screw Torque: 9±1Kgf)

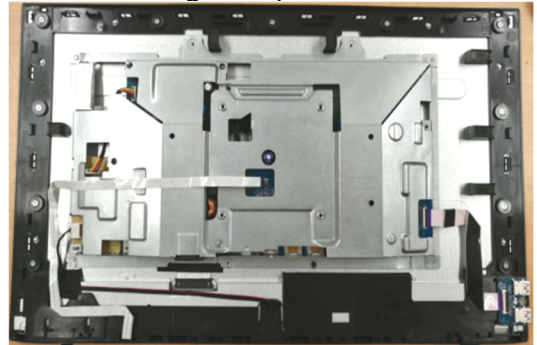


S4 Tear off the AL foil

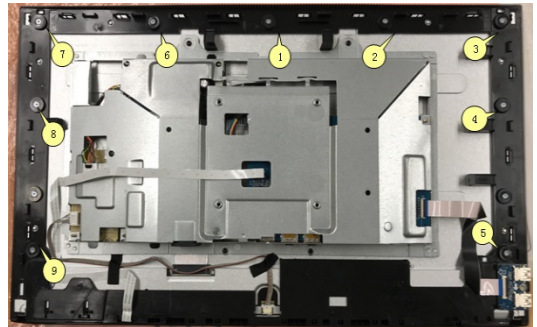
Pull out Control Board Cable, wire & USB Board Cable

Take off Main Shielding from middle frame

Tear off adhesive tape from LVDS cable. Pull out LVDS cable and take off Main Shielding from panel

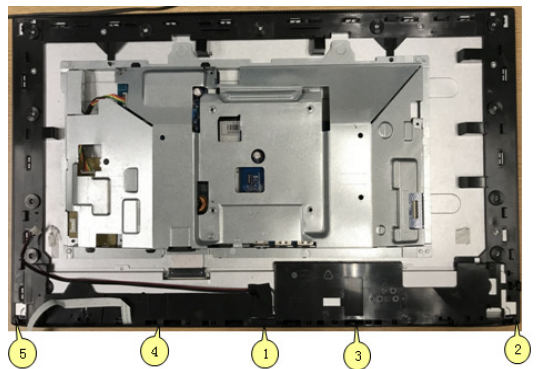


S5 Unlock 9 screws on Middle Frame



(Screw Torque: 3.5~4.0Kgf)

S6 Unlock 5 screws on Bezel

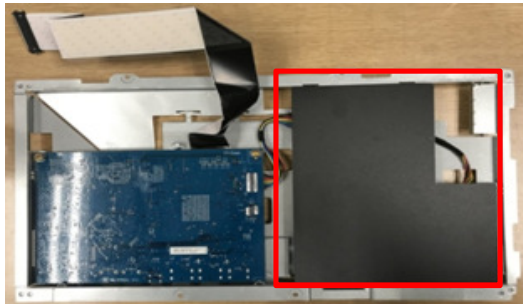


(Screw Torque: 1.25-1.3kgf)

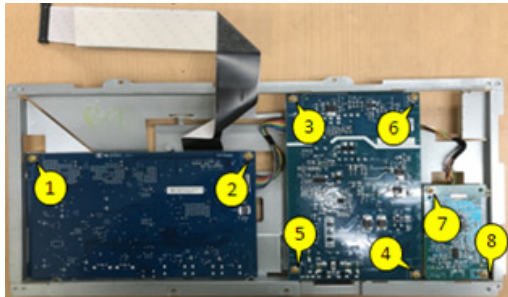
S7 Disassemble Middle Frame and Bezel



S8 Disassemble Mylar from Main Shielding



S9 Unlock 8 PCB screws



(Screw Torque for PCB Screw: 8~9kgf)

S10 Take out I/F Board, SPS Board and LED Driver BD from Main Shielding



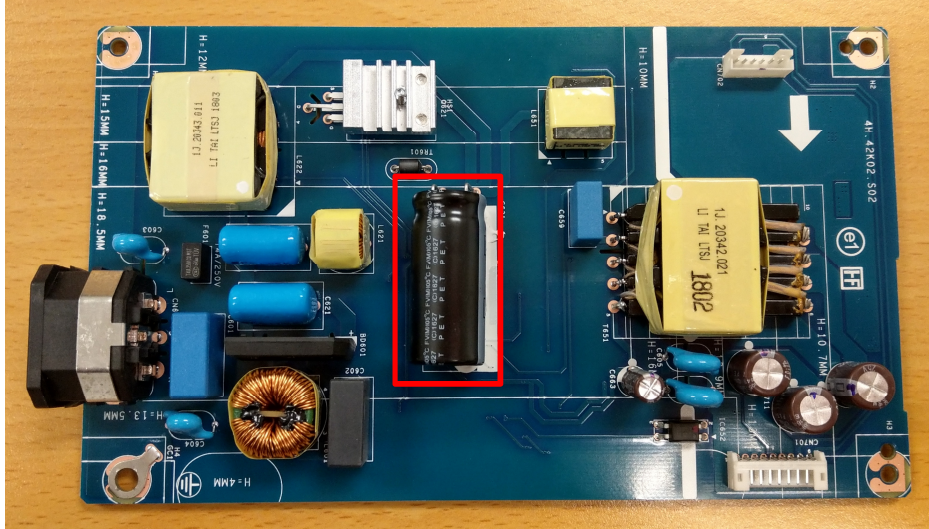
S11 Pull out LVDS cable and I/F board cable from I/F board



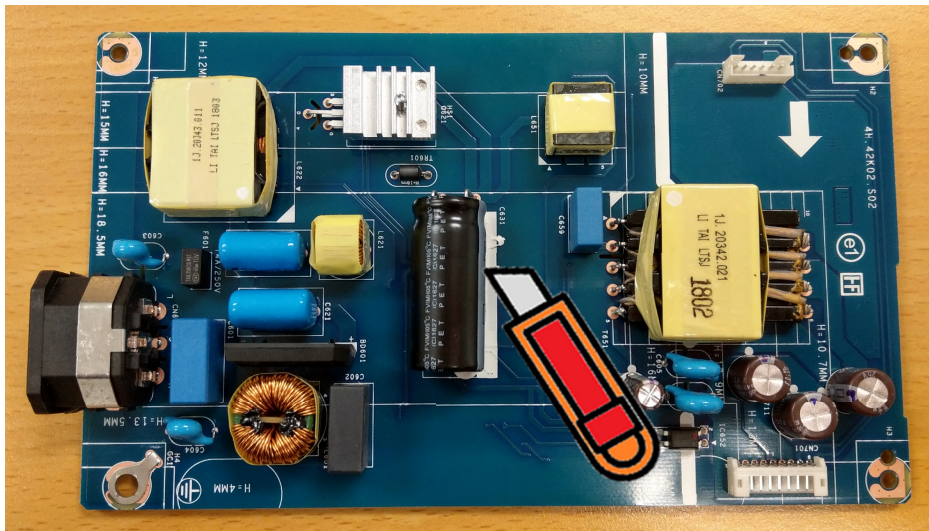
S12 Pull out I/F board cable and LED Driver board cable from SPS Board



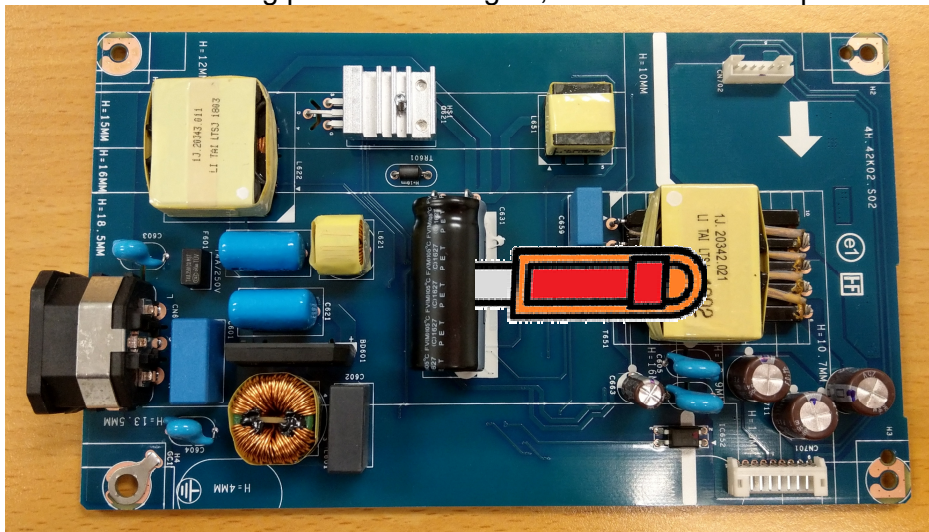
S13 Remove electrolyte capacitors (red mark) from printed circuit boards



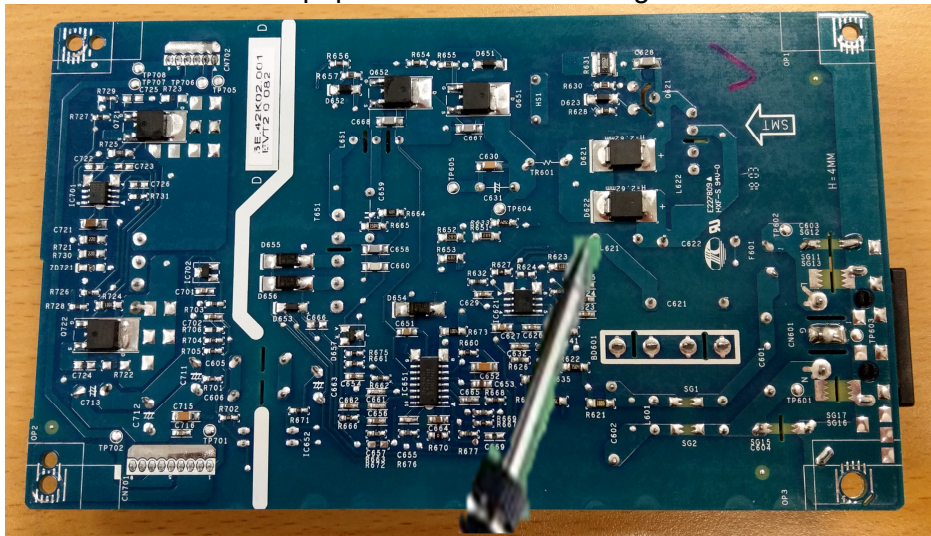
S13-1 Cut the glue between bulk cap. and PCB with a knife



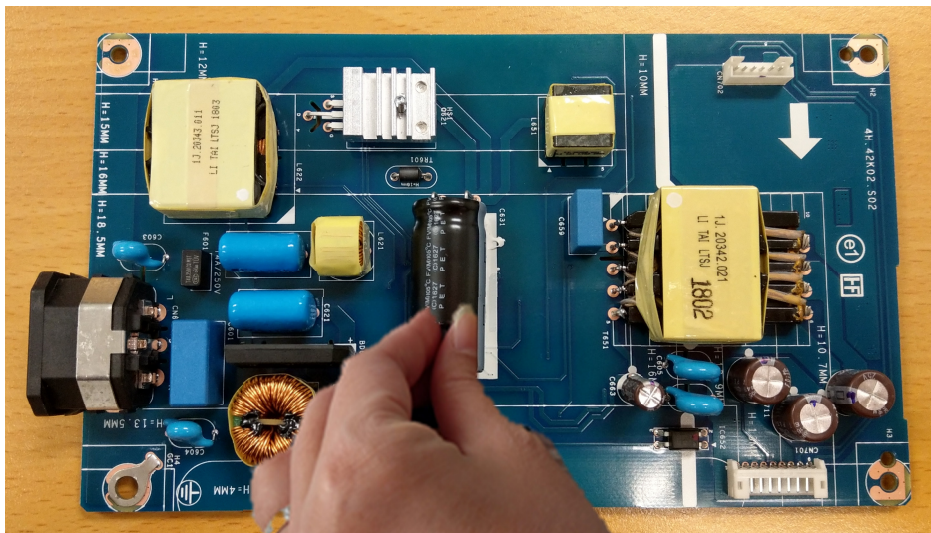
S13-2 Ensure cutting path within the glue, don't touch bulk cap. or PCB



S13-3 Take out bulk cap. pin solder with soldering iron and absorber



S13-4 Lift the bulk cap. up and away from the PCB



2. Product material information

The following substances, preparations, or components should be disposed of or recovered separately from other WEEE in compliance with Article 4 of EU Council Directive 75/442/EEC.

Capacitors / condensers (containing PCB/PCT)	No used
Mercury containing components	No used
Batteries	No used
Printed circuit boards (with a surface greater than 10 square cm)	Product has printed circuit boards (with a surface greater than 10 square cm)
Component contain toner, ink and liquids	No used
Plastic containing BFR	No used
Component and waste contain asbestos	No used
CRT	No used
Component contain CFC, HCFC, HFC and HC	No used
Gas discharge lamps	No used
LCD display > 100 cm ²	Product has an LCD greater than 100 cm ²
External electric cable	Product has external cables
Component contain refractory ceramic fibers	No used
Component contain radio-active substances	No used
Electrolyte capacitors (height > 25mm, diameter > 25mm)	Product has electrolyte capacitors (height >25mm, diameter > 25mm)

3. Tools Required

List the type and size of the tools that would typically can be used to disassemble the product to a point where components and materials requiring selective treatment can be removed.

Tool Description:

- Screwdriver
- Penknife
- Bar scraper