
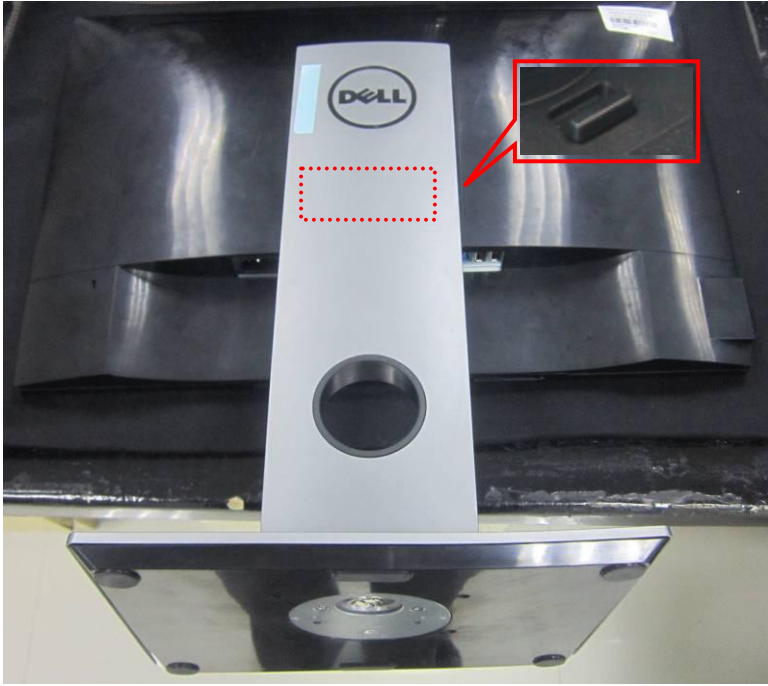
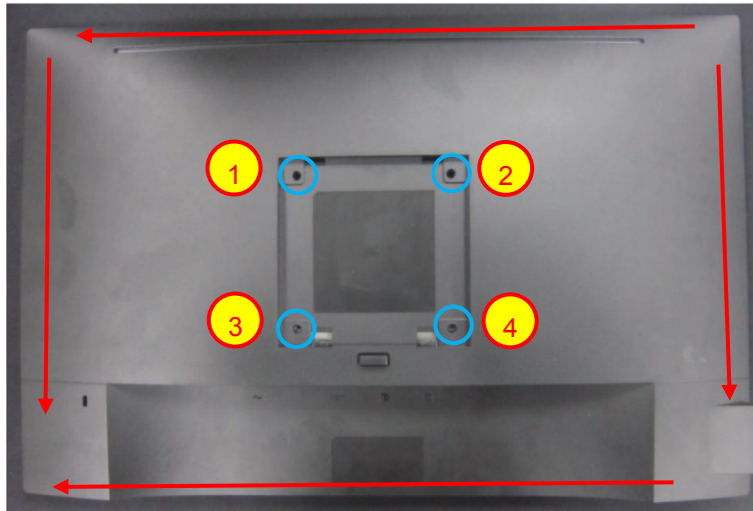


# 1. Disassembly Procedures:

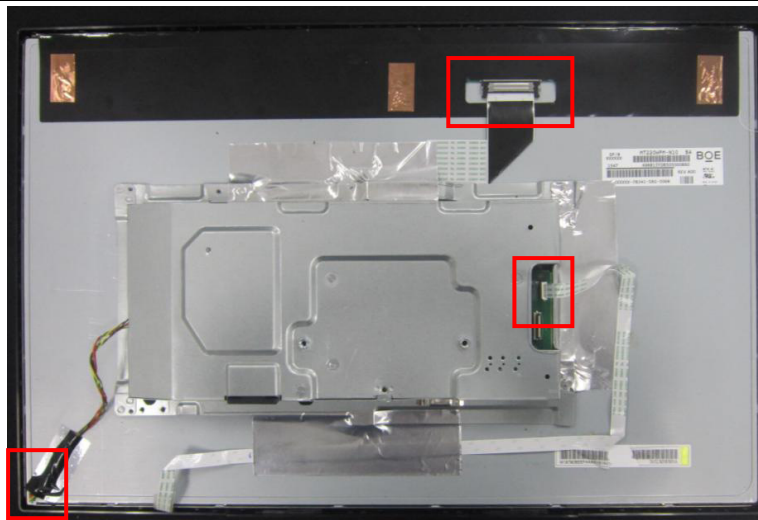
| Step                                   | Figure   | Remark  |
|--|--|---|
| <p>S1.Before disassemble</p>           |   | <p>Turn off power,<br/>Unplug external cables from product</p>  |
| <p>S2. Remove the STAND-BASE ASS'Y</p> |  | <p>Press the button on the red then pull out the stand upward, stand will be remove.</p> <p><b>Note:</b><br/>To prevent scratches on the LCD screen while removing the stand, ensure that the monitor is placed on a soft, clean surface.</p> |

### S3.Remove the REAR COVER

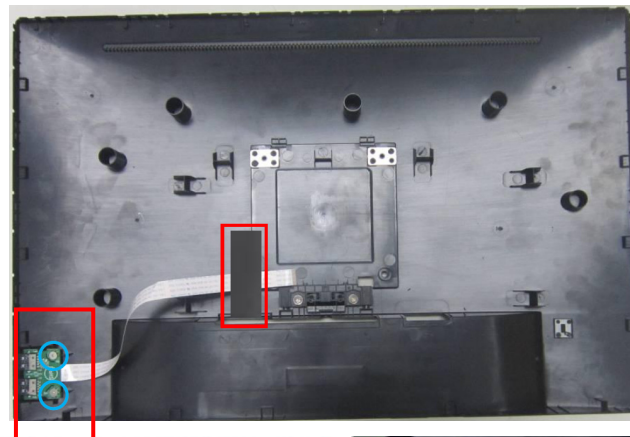


Use a Philips-head screwdriver to remove 4 screws for unlocking mechanisms.  
 (No.1~4 screw size=M4x10;  
 Torque=12±2kgf.cm)  
 2. Use Penknife to separate the bezel and rear cover follow the arrows in sequence, then you can take out rear cover..

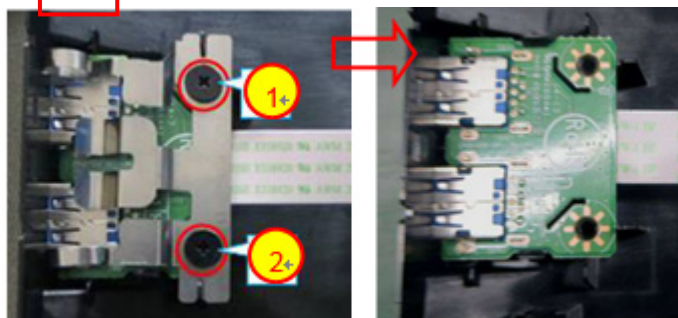
### S4.Remove the Cables and key board

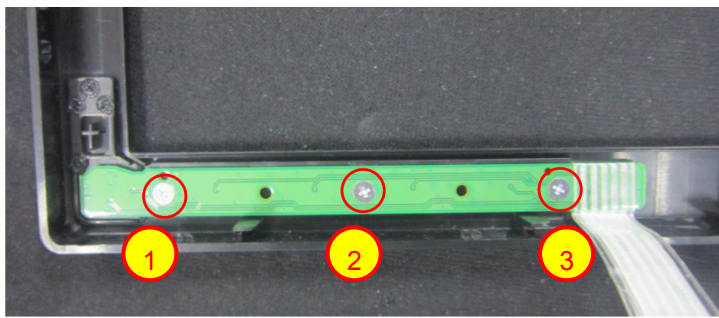


Disconnect the pins.



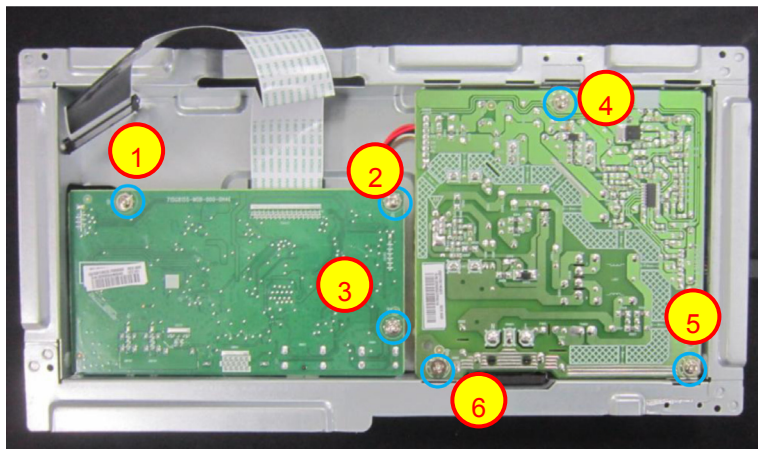
Use a Philips-head screwdriver to remove 2 screws for unlocking USB board.  
 (No.1~2 screw size=Q3x4;  
 Torque=4±1kgf.cm)



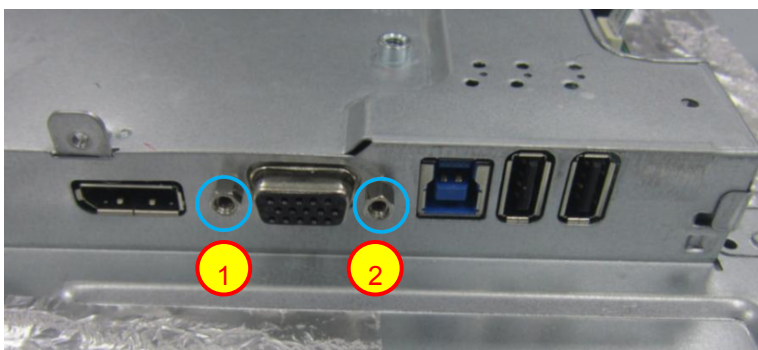


Use a Philips-head screwdriver to remove 3 screws for unlocking key board  
 (No.1~3 screw size=M2x2.5; Torque=0.9±0.4kgf.cm)

**S5.Remove the Main and Power Board**

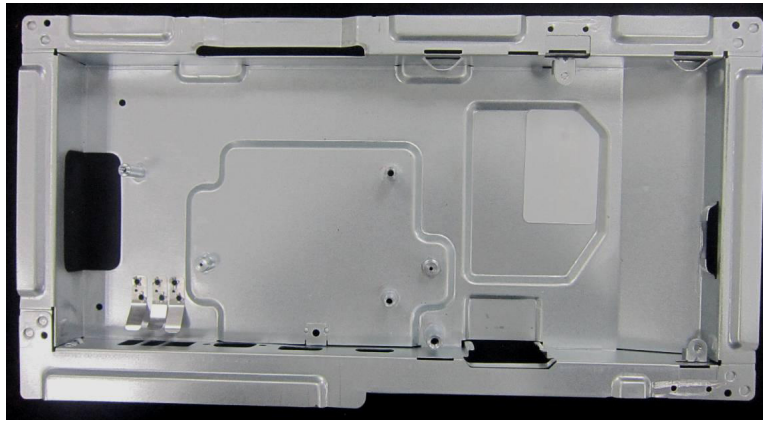


Use a Philips-head screwdriver to remove 6 screws for unlocking Main board and Power board  
 (No.1~5 screw size=D3x6; Torque=6±1kgf.cm  
 No.6 screw size=M4x6; Torque=6±1kgf.cm)



Use a hex screwdriver to remove 2 screws for unlocking mainboard  
 (No.1~2 Hex screw Torque= 4.5±0.5kgf.cm)

**S6.The  
Mainframe**



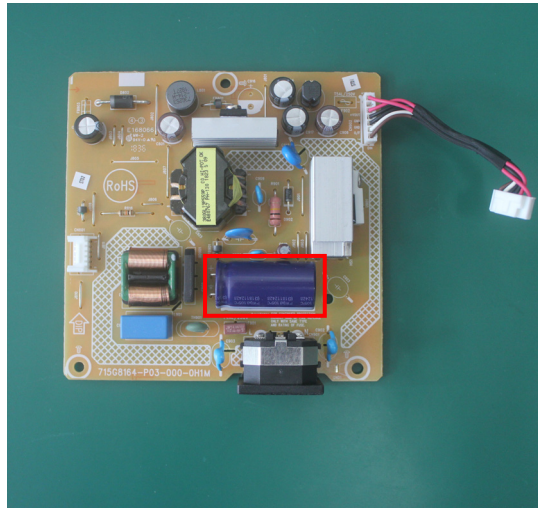
Mainframe

**S7.The panel.**

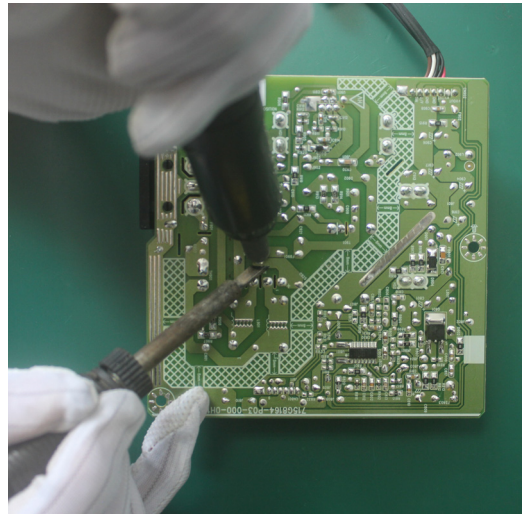


Panel

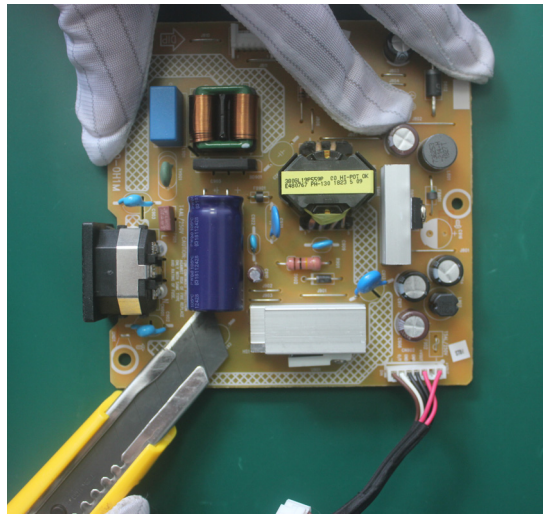
**S8.Remove  
capacitors**



Remove electrolyte  
capacitors (red mark)  
from printed circuit  
boards



Take out bulk cap. pin solder with soldering iron and absorber



Lift the bulk cap. up and away from the PCB

## 2. Product material information

The following substances, preparations, or components should be disposed of or recovered separately from other WEEE in compliance with Article 4 of EU Council Directive 75/442/EEC.

|   |   |
|---|---|
| Capacitors / condensers (containing PCB/PCT)                      | No used   |
| Mercury containing components                                     | No used   |
| Batteries   | No used   |
| Printed circuit boards (with a surface greater than 10 square cm) | Product has printed circuit boards (with a surface greater than 10 square cm) |
| Component contain toner, ink and liquids                          | No used   |
| Plastic containing BFR  | No used   |
| Component and waste contain asbestos                              | No used   |
| CRT   | No used   |
| Component contain CFC, HCFC, HFC and HC                           | No used   |
| Gas discharge lamps   | No used   |
| LCD display > 100 cm <sup>2</sup>                                 | Product has an LCD greater than 100 cm <sup>2</sup>                           |
| External electric cable   | Product has external cables   |
| Component contain refractory ceramic fibers                       | No used   |
| Component contain radio-active substances                         | No used   |
| Electrolyte capacitors (height > 25mm, diameter > 25mm)           | Product has electrolyte capacitors (height > 25mm, diameter > 25mm)           |

## 3. Tools Required

List the type and size of the tools that would typically can be used to disassemble the product to a point where components and materials requiring selective treatment can be removed.

Tool Description:

- Phillip head Screwdriver
- Hex Screwdriver
- Penknife
- Soldering iron and absorber