

◀◀ Go to contents page

1. Disassembly Procedures:

S1 Open the carton with a proper tool.



Take out all accessories including QSG, Delta-e paper, user's manual, DP cable, USB cable, power cable and other packing materials from the carton. (Note: It depends on whether users returning the accessories)

S2



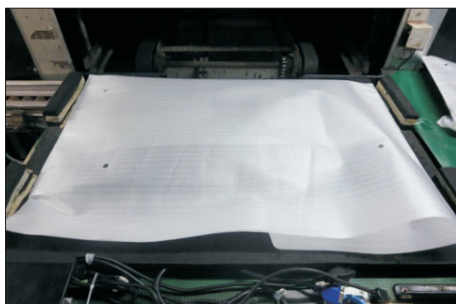
Take out the base, Paper-Top and stand from the carton, then take out the monitor from the pizza carton.

S3



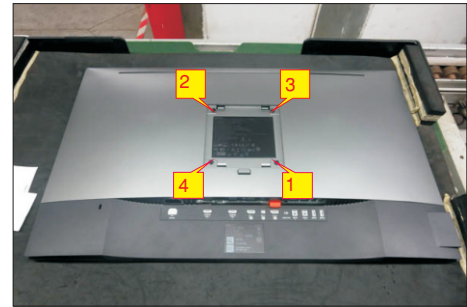
S4

Take out the monitor from EPE-bag and put the LCD monitor on a protective cushion.



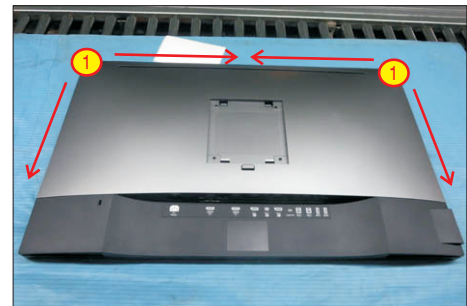
S5

Use a Philips-head screwdriver to remove four screws for unlocking mechanisms. (No.1~4 screw size=M4x8; Torque=10~11kgfxcM)



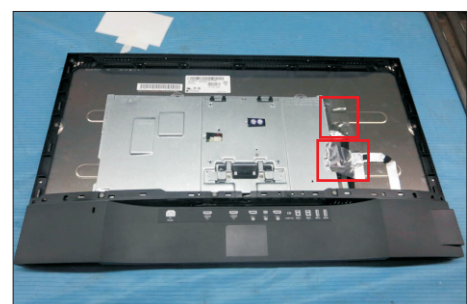
Wedge your fingers between the rear cover and the middle bezel on the corners of the top side of the monitor to release the rear cover, then use one hand to press the middle bezel, the other hand to pull up carefully the rear cover in order of arrow preference for unlocking mechanisms of rear cover.

S6

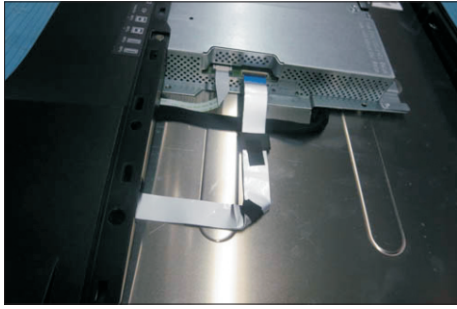


Remove the rear cover carefully. Tear off the two pieces of aluminum foil, and then disconnect the USB cable away from the connector of the circuit board, then tear off adhesive tape to release the cable.

S7

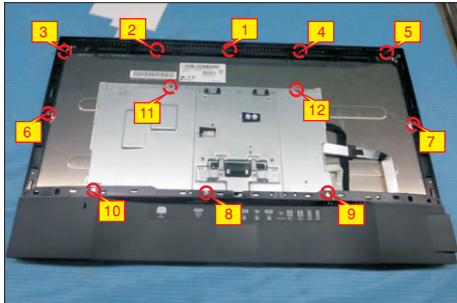


◀◀ Go to contents page



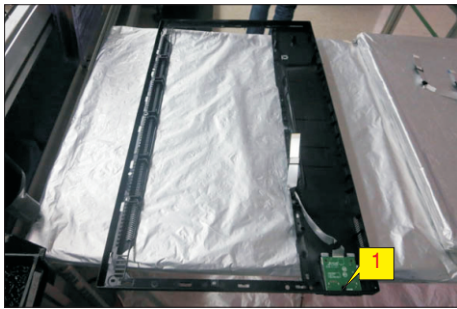
S8

Use a Philips-head screwdriver to release ten screws for unlocking the middle bezel with the assembled unit. Use a Philips-head screwdriver to unlock two screws for releasing the bracket chassis module.
(No.1~12 screw size=M3x4, Torque=3~4kgfxcM)



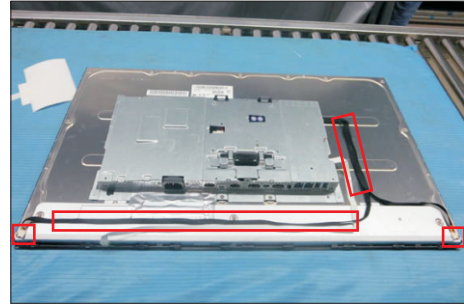
S9

Remove the middle bezel and put it on a protector. Use a Philips-head screwdriver to remove one screw for unlocking the USB board unit, then release the USB board unit and put it aside.
(No.1 screw size=M3x7.5, Torque=7~8kgfxcM)



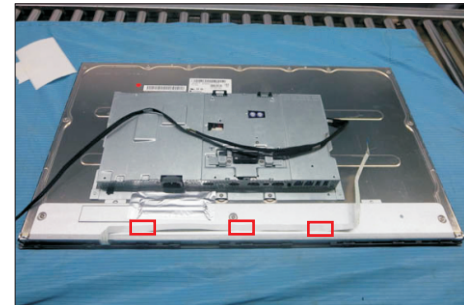
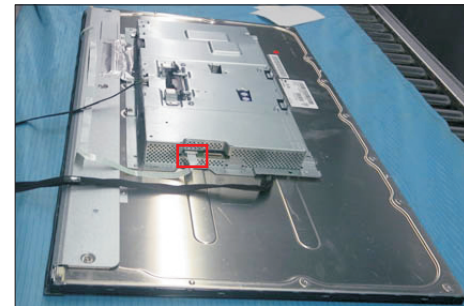
S10

Tear off the two pieces of PVC tape, then disconnect the two panel power cables away from the connectors of the panel module, then release the panel power cable by tearing off the adhesive tapes.



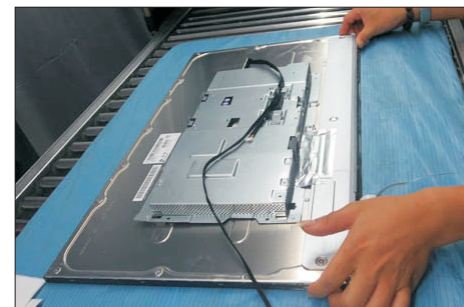
S11

Disconnect the function key cable from the connector of the interface board, then tear off the adhesive tapes to release the function key cable.



S12

Lift up panel module for releasing the front bezel, then remove the front bezel with the function key board and put it aside.

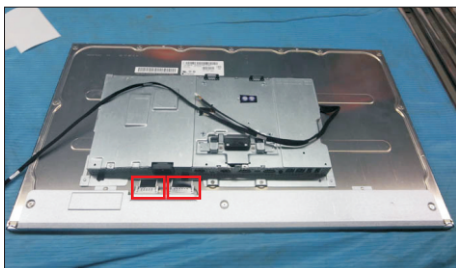
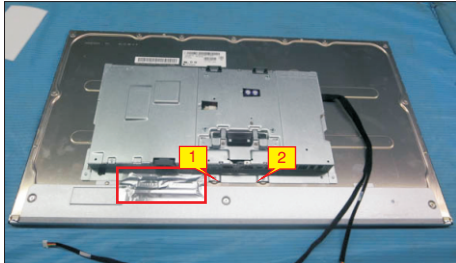


◀◀ [Go to contents page](#)

S13

Use a Philips-head screwdriver to release two screws for unlocking the bracket chassis module. Tear off the aluminum foil, and then disconnect the two LVDS cables from the connectors of the panel module.

(No.1~2 Screw size= M3x0.5x4, Torque=3~4kgfxcM)



S14

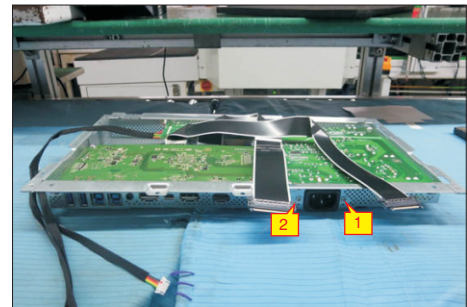
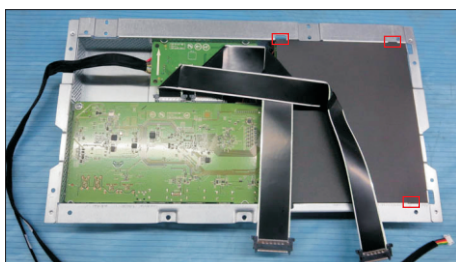
Lift up the bracket chassis module and put it on a protector cushion.



S15

Turn over the bracket chassis module. Remove the Mylar from the hooks of the bracket, and then use a Philips-head screwdriver to remove two screws for unlocking AC power outlet.

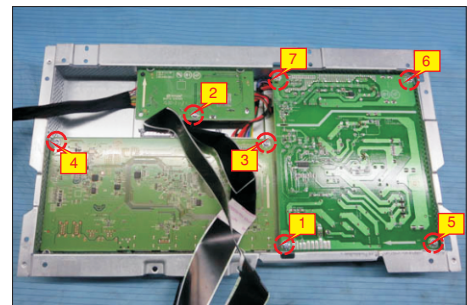
(No.1~2 screw size=M3x10, Torque=4~5kgfxcM)



S16

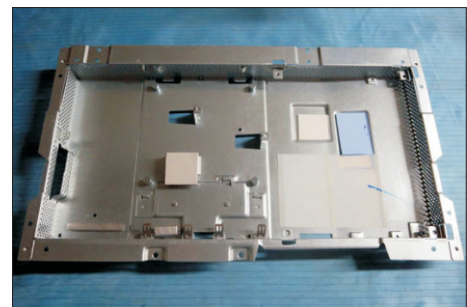
Use a Philips-head screwdriver to remove seven screws for unlocking interface board, LED driver board and power board, then release the panel power cable by tearing off the adhesive tape.

(No.1 screw size=M4x8, Torque=7~8kgfxcM;
No.2~7 screw size=M3x7.5, Torque=7~8kgfxcM)



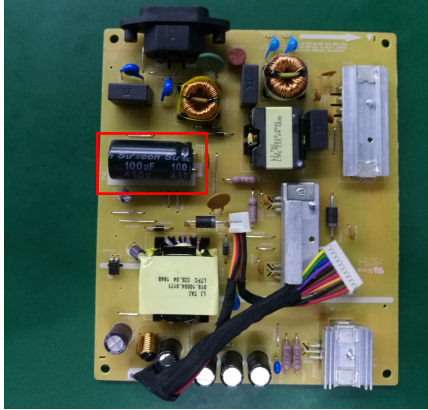
S17

Remove the circuit boards from the bracket chassis module carefully, and then disconnect all of the cables.

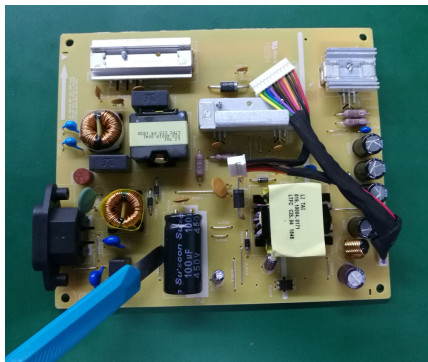


◀◀ [Go to contents page](#)

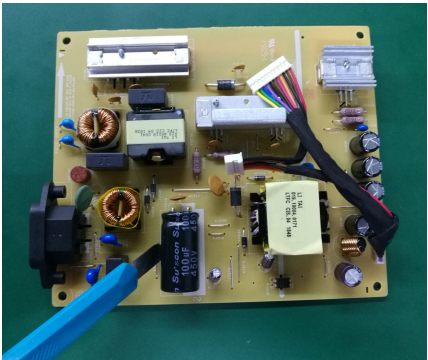
S1, Remove electrolyte capacitors (red mark) from printed circuit boards



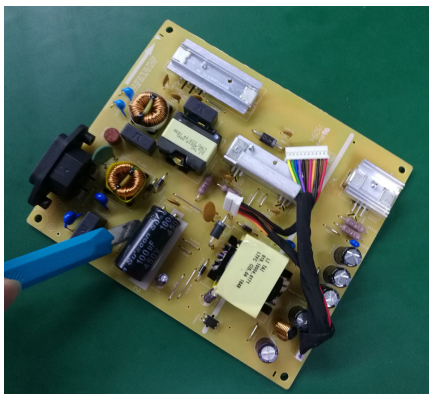
S1 -1 Cut the glue between bulk cap. and PCB with a knife



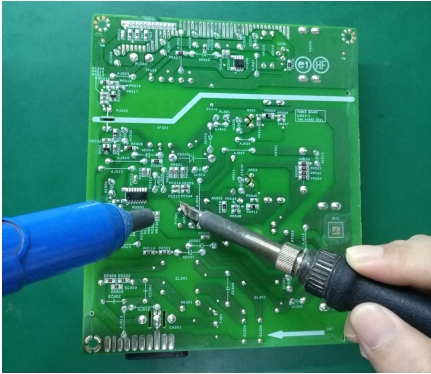
S1 -2 Ensure cutting path within the glue, don't touch bulk cap. or PCB



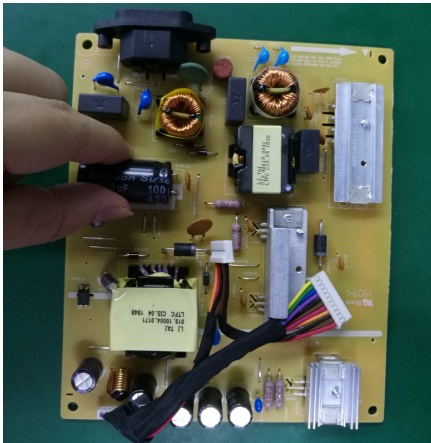
S1 -3 Cut into the bottom of bulk cap. and pull it up carefully



S1 -4 Take out bulk cap. pin solder with soldering iron and absorber



S1 -5 Lift the bulk cap. up and away from the PCB



◀◀ [Go to contents page](#)

. Product material information

The following substances, preparations, or components should be disposed of or recovered separately from other WEEE in compliance with Article 4 of EU Council Directive 75/442/EEC.

Capacitors / condensers (containing PCB/PCT)	No used
Mercury containing components	No used
Batteries	No used
Printed circuit boards (with a surface greater than 10 square cm)	Product has printed circuit boards (with a surface greater than 10 square cm)
Component contain toner, ink and liquids	No used
Plastic containing BFR	No used
Component and waste contain asbestos	No used
CRT	No used
Component contain CFC, HCFC, HFC and HC	No used
Gas discharge lamps	No used
LCD display > 100 cm ²	Product has an LCD greater than 100 cm ²
External electric cable	Product has external cables
Component contain refractory ceramic fibers	No used
Component contain radio-active substances	No used
Electrolyte capacitors (height > 25mm, diameter > 25mm)	Product has electrolyte capacitors (height > 25mm, diameter > 25mm)

. Tools Required

List the type and size of the tools that would typically can be used to disassemble the product to a point where components and materials requiring selective treatment can be removed.

Tool Description:

- Screwdriver (Phillip head) #1
- Screwdriver (Phillip head) #2
- Penknife
- Soldering iron and absorber