
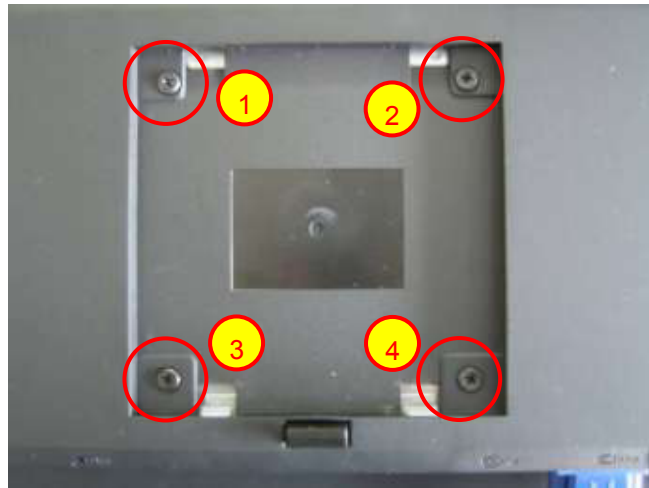


1. Disassembly Procedures:

| Step | Figure | Remark |
|--|--|---|
| <p>S1. The Front View</p> |  | <p>Turn off power, Unplug external cables from product</p> |
| <p>S2. Remove the STAND-BASE ASS'Y</p> |   | <p>To remove the stand:</p> <ol style="list-style-type: none"> 1. Press and hold the stand release button. 2. Lift the stand up and away from the monitor. <p>Note: To prevent scratches on the LCD screen while removing the stand, ensure that the monitor is placed on a soft, clean surface.</p> |

**S3. Remove the
REAR COVER**

Use a Philips-head screwdriver to remove 4 screws for unlocking mechanisms.

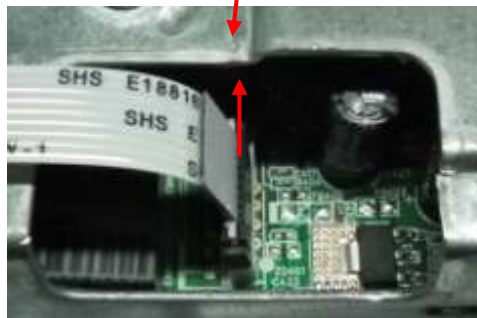
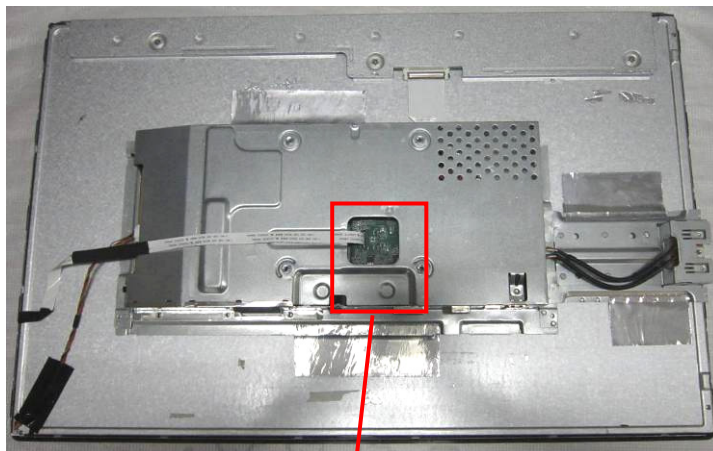
(No.1~4 screw

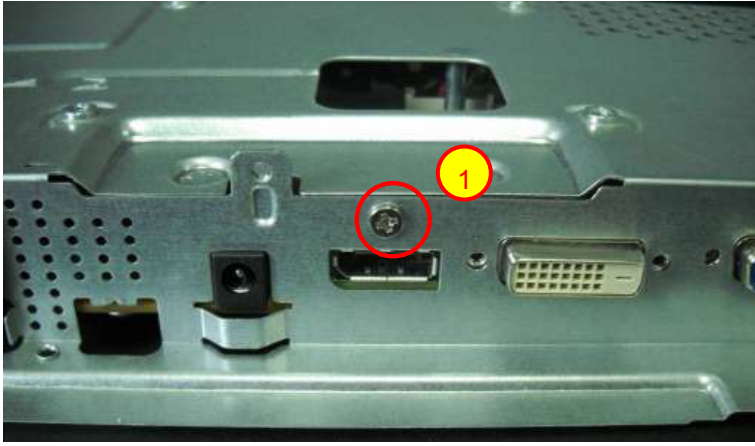
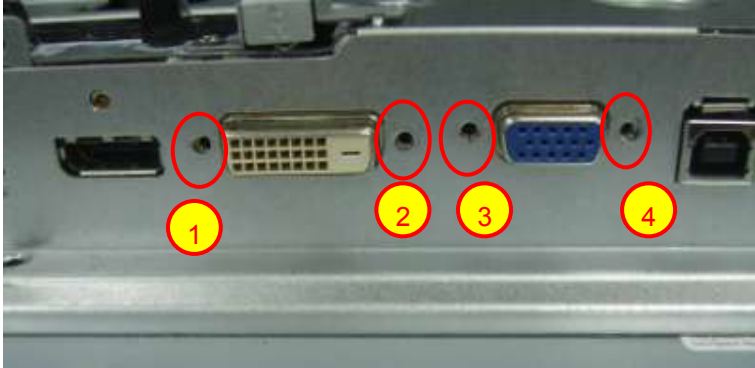
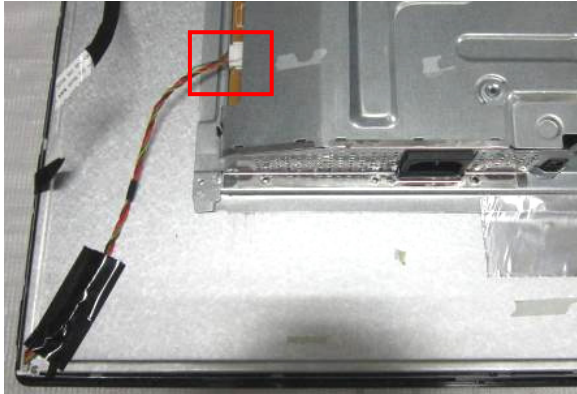
size=M4x10;

Torque=12±2kgf.cm)

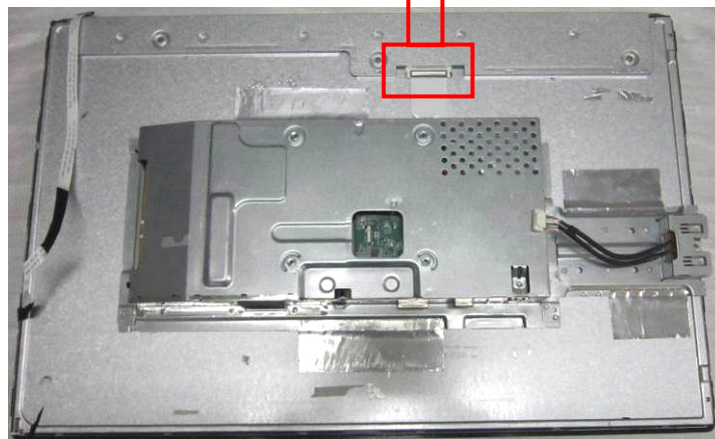
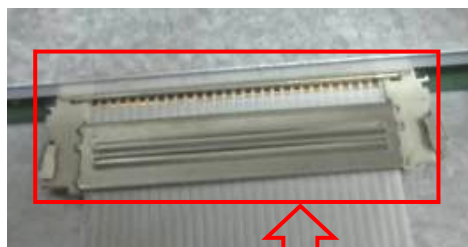


Use Penknife to separate the bezel and rear cover follow the arrows in sequence, then you can take out rear cover.

**S4. Disconnect
the FFC cable**

| | | |
|--|--|--|
| <p>S5. Remove the VGA, DVI and DP</p> |  | <p>Use a Philips-head screwdriver to remove 1 screws for unlocking main board. (No.1 screw size=P3x6; Torque= 6±1kgf.cm)</p> |
| |  | <p>Use a Hex screwdriver to remove 4 screws for unlocking main board. (No.1~4 is Hex-screw, Torque= 4.5±0.5kgf.cm)</p> |
| <p>S6. Remove the FFC cable</p> |  | |

**S7. Remove the
TAPE
and panel FFC
cable**

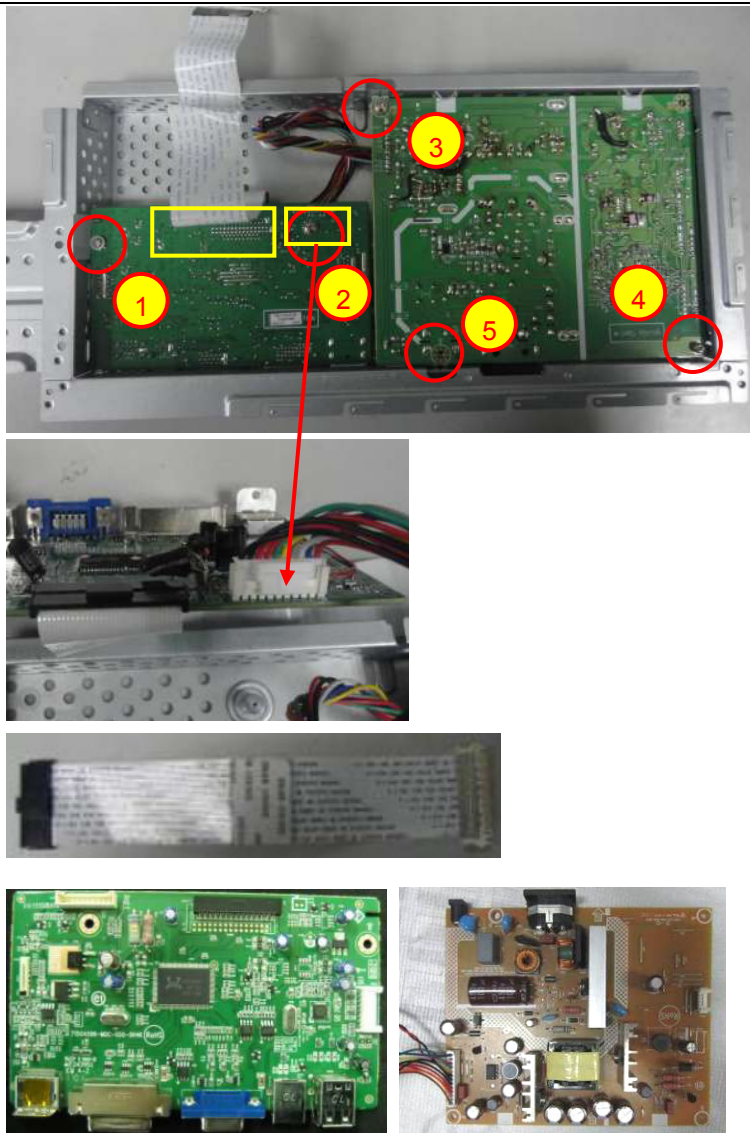


S8. Remove the MAIN FRAME



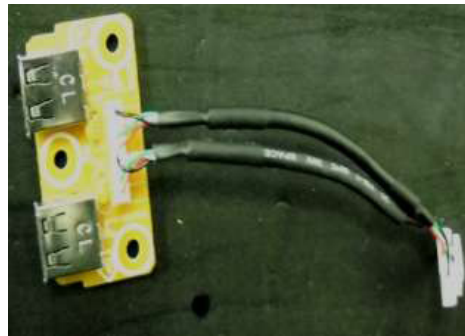
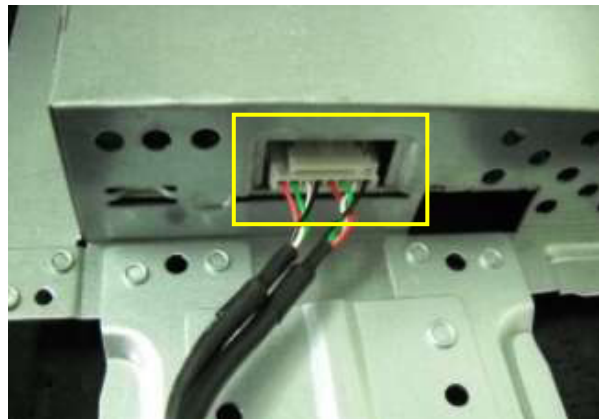
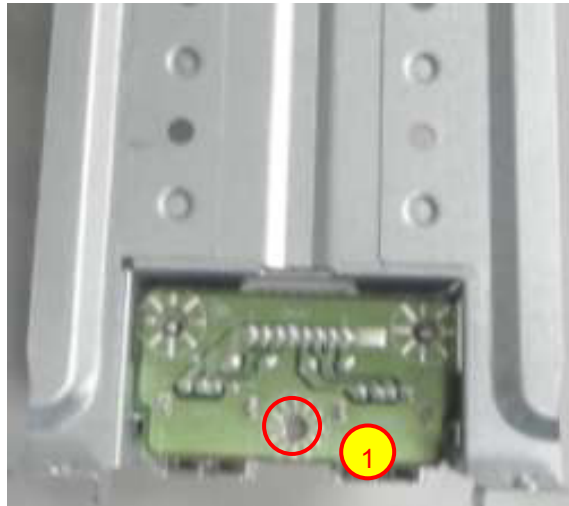
Remove nad turn over it.

S9. Remove the MAIN &POWER BOARD



Use a Philips-head screwdriver to remove 5 screws for unlocking main board and power board
(No.1~4 screw size=D3x6; Torque=6±1kgf.cm
No.5 screw size=M4x6; Torque=6±1kgf.cm)

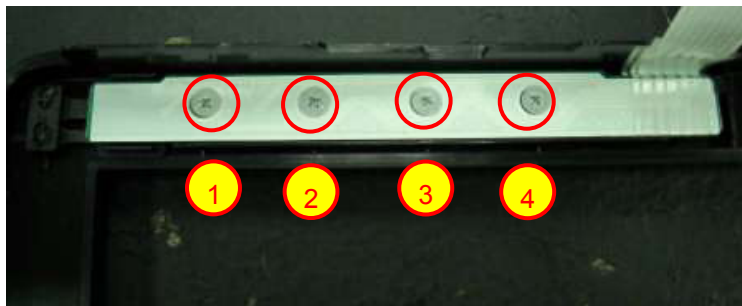
Disconnect cables

**S10. Remove the
USB BOARD**

1. Use a Philips-head screwdriver to remove 1 screw for unlocking USB board

(No.1 screw size=D3x6;
Torque=6±1kgf.cm)



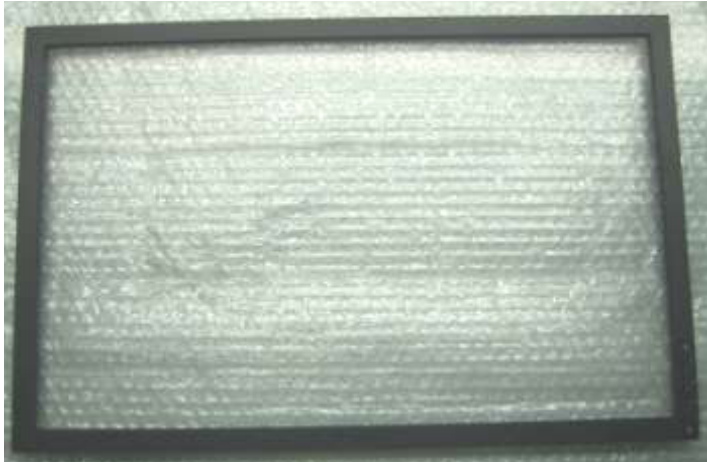
2. Disconnect the USB
WIRE HARNESS.

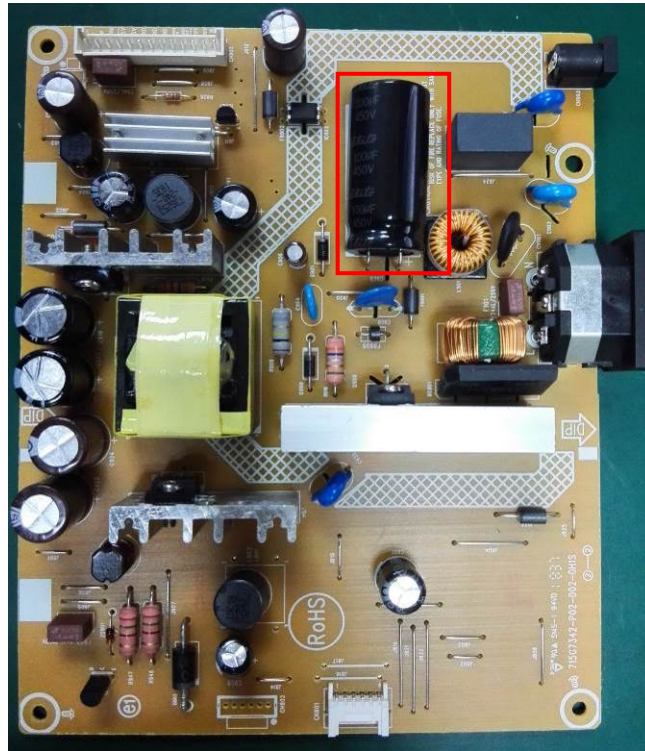
**S11. Remove the
KEY BOARD**

Use a Philips-head screwdriver to remove 4 screws for unlocking Key board.

(No.1~4 screw
size= M2x2.5

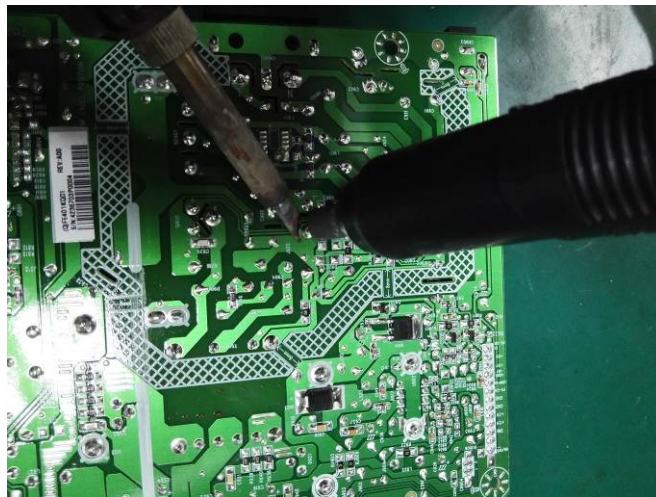
Torque=0.9±0.4kgf.cm)

| | | |
|-----------------------------------|--|--|
| <p>S12. The PANEL</p> |  A silver metal panel, likely a back cover or a component of a display assembly. It features a central label with technical specifications and a barcode. The panel has several mounting holes and a central cutout. | |
| <p>S13. The MAIN FRAME</p> |  The internal metal frame of a device, showing various components and mounting points. It includes a central cutout, a perforated section on the left, and several mounting brackets and screws. | |
| <p>S14. The BEZEL</p> |  A black bezel frame with a textured, woven appearance. It is rectangular and appears to be made of a flexible material, possibly fabric or a specialized plastic. | |

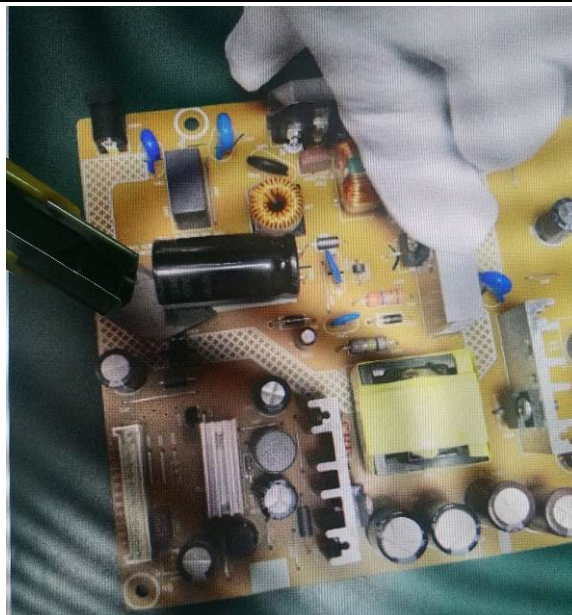


Remove electrolyte capacitors (red mark) from printed circuit boards

S15.Remove capacitor



Take out bulk cap. pin solder with soldering iron and absorber



Lift the bulk cap. up and away from the PCB

2. Product material information

The following substances, preparations, or components should be disposed of or recovered separately from other WEEE in compliance with Article 4 of EU Council Directive 75/442/EEC.

| | |
|---|---|
| Capacitors / condensers (containing PCB/PCT) | No used |
| Mercury containing components | No used |
| Batteries | No used |
| Printed circuit boards (with a surface greater than 10 square cm) | Product has printed circuit boards (with a surface greater than 10 square cm) |
| Component contain toner, ink and liquids | No used |
| Plastic containing BFR | No used |
| Component and waste contain asbestos | No used |
| CRT | No used |
| Component contain CFC, HCFC, HFC and HC | No used |
| Gas discharge lamps | No used |
| LCD display > 100 cm ² | Product has an LCD greater than 100 cm ² |
| External electric cable | Product has external cables |
| Component contain refractory ceramic fibers | No used |
| Component contain radio-active substances | No used |
| Electrolyte capacitors (height > 25mm, diameter > 25mm) | Product has electrolyte capacitors (height > 25mm, diameter > 25mm) |

3. Tools Required

List the type and size of the tools that would typically can be used to disassemble the product to a point where components and materials requiring selective treatment can be removed.

Tool Description:

- Phillip head Screwdriver
- Hex Screwdriver
- Penknife
- Soldering iron and absorber