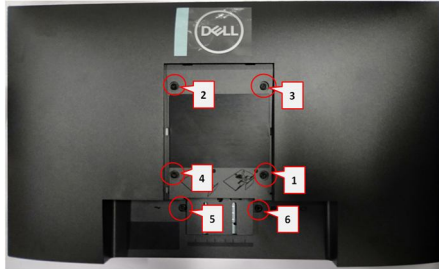


Chapter 8-TEARDOWN INSTRUCTION

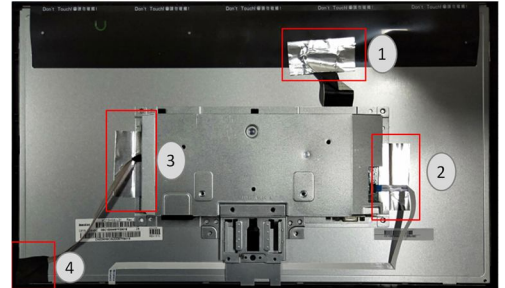
S1

1. Remove Rear Cover Screw and Stand Screws
 - a. Remove screws "1~4" on rear cover with electric screwdriver
 - b. Remove stand screws "5" and "6".
Torque: 12.0 +/- 0.5Kgf/cm



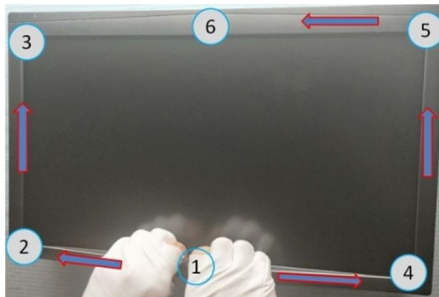
S4

4. Remove Aluminium Foil and Acetate Cloth Tape
 - a. Remove aluminium tape in "1~3" order
 - b. Remove acetate cloth tape marked with "4"



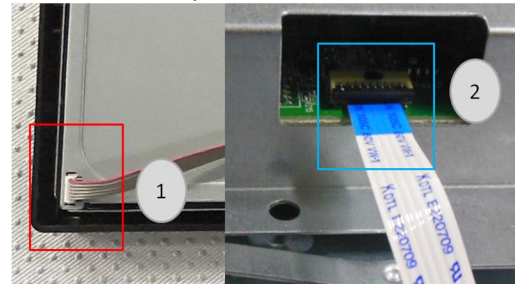
S2

2. Remove Front Cover:
 - a. Panel side up, remove front panel with both hands in sequence of "1->2->3", then "1->4->5->6".



S5

5. Remove Light Bar and Keypad Cable:
 - a. Remove light bar "1" (grasp on Pin then pull upwards to remove)
 - b. Remove KP cable "2" (lift cover before remove KP cable)



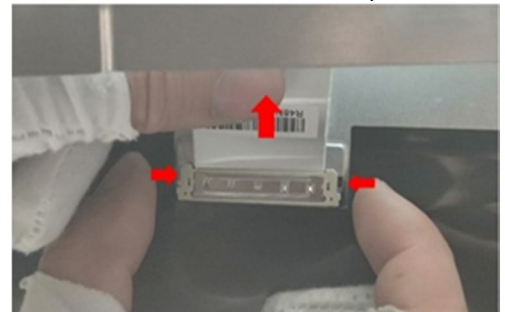
S3

3. Remove Rear Cover:
 - a. Turn monitor to rear side up, remove rear cover.



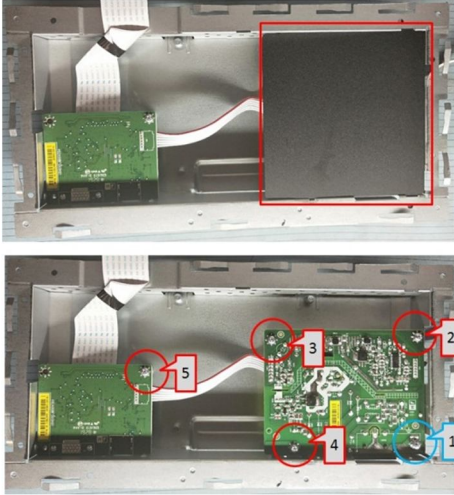
S6

6. Remove FFC:
 - a. Pinch on clips on the sides, and remove FFC
 - b. Remove assembled chassis from panel



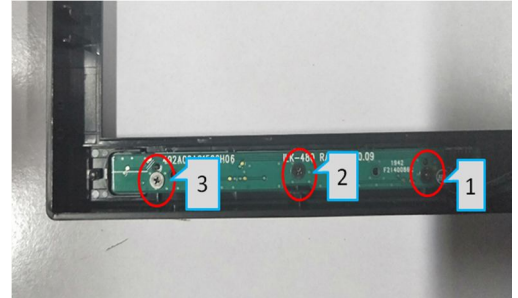
S7

7. Remove PCBA 1:
 - a. Remove mylar (squared in red in the upper picture)
 - b. Use electric screwdriver to remove grounding screw "1", then locking screws marked "2~5". Screwdriver torque: 5.5 ± 0.5 kgf/cm



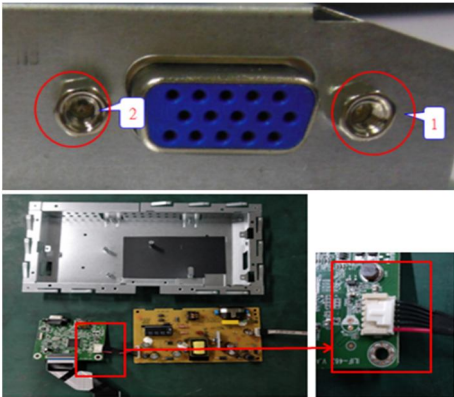
S10

10. Remove Keypad:
 - a. Remove screws "1, 2, 3" with electric screwdriver. Screwdriver torque: 1.0 ± 0.1 kgf/cm



S8

8. Remove PCBA 2:
 - a. Remove 2 pcs hex head bolt with electric screwdriver
 - b. Remove IF board and Power board
 - c. Separate IF board and Power board



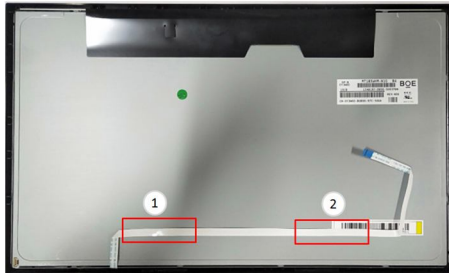
S11

- a. Remove electrolyte capacitor >25mm height (squared in red) from printed circuit boards.
- b. Cut the glue between bulk cap and PCBA with knife – ensure cutting path within the glue, don't touch bulk cap and PCBA.



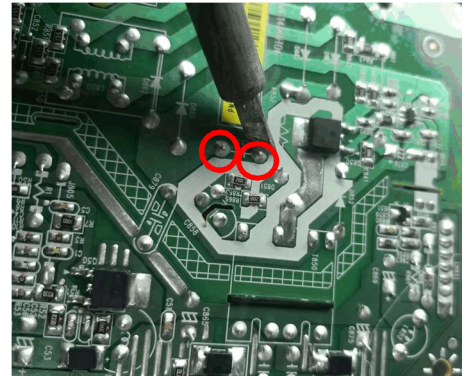
S9

9. Separate Front Cover from Panel:
 - a. Tear off Keypad cable from Panel. Taped on "1, 2, 3".
 - b. Turn the monitor to the front view and remove front cover.



S12

- a. Take out the capacitor pin solder with soldering iron.
- b. Lift the bulk capacitor away from power board.



1. Product Material Information

The following substances, preparation, or components should be disposed of or recovered separately from other WEEE in compliance with Article 4 of EU Council Directive 75/422/EEC.

Capacitors / Condensers (containing PCB/PCT)	Not used
Mercury containing components	Not used
Batteries	Not used
Printed circuit boards (with surface greater than 10 square cm)	Product has printed circuit boards (with surface greater than 10 square cm)
Component contain toner, ink and liquids	Not used
Plastic containing BFR	
Component and waste contain asbestos	Not used
CRT	Not used
Component contain CFC, HCFC, HGC and HC	Not used
Gas discharge lamps	Not use
LCD display > 100 cm ²	Product LCD greater than 100cm ²
External electric cable	Product has external cables
Component contain refractory ceramic fibers	Not used
Component contains radio-active substances	Not used
Electrolyte capacitors (height > 25mm, diameter >25mm)	Product has electrolyte capacitors (height > 25mm)

2. Tools Required

List the type and size of the tools that would typically can be used to disassemble the product to a point where components and materials requiring selective treatment can be removed.

Tool Description:

- Screwdriver (Philip head with $\Phi 5$ mm & $\Phi 3$ mm)
- Screwdriver (Hexagonal to remove VGA connectivity)
- Soldering iron
- Knife