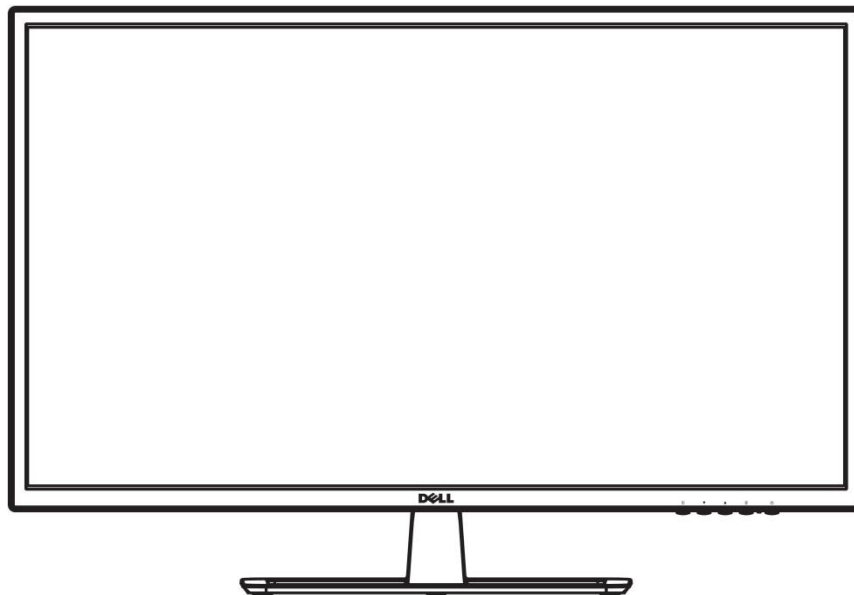


Service Manual



LED MONITOR No. *D1918H*



WARNING

This service information is designed for experienced repair technicians only and is not designed for use by the general public. It does not contain warnings or cautions to advise non-technical individuals of potential dangers in attempting to service a product. Products powered by electricity should be serviced or repaired only by experienced professional technicians. Any attempt to service or repair the product or products dealt with in this service information by anyone else could result in serious injury or death.

Assembly and Disassembly Procedures

Assembly—SOP D1918H

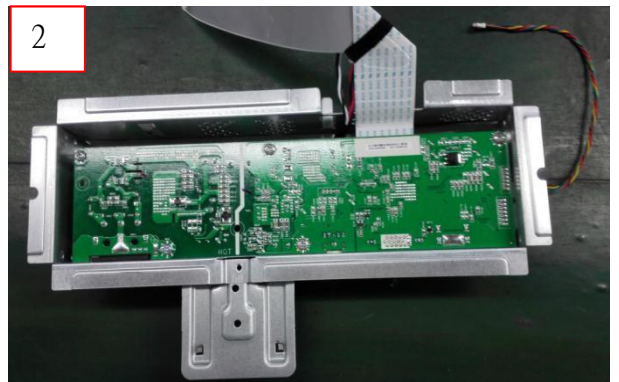
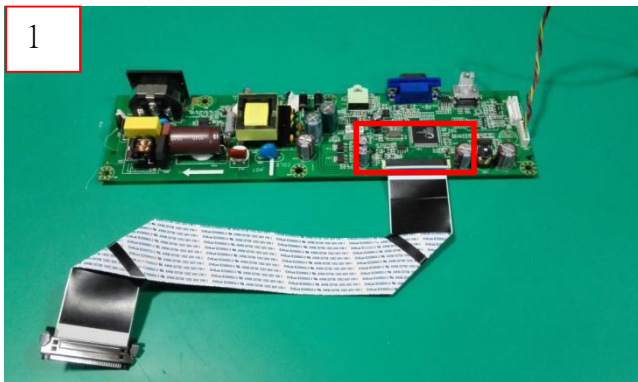
Assembly procedures

Preparation before assembly

1. clean the room for work
2. Identify the area for material
3. Prepare the implement, equipments, materials as bellow:
 - 1) Press Fixture
 - 2) Work ing table
 - 3) Screw-Driver
 - 4) knife
 - 5) glove
 - 6) cleaning cloth
 - 7) ESD protection

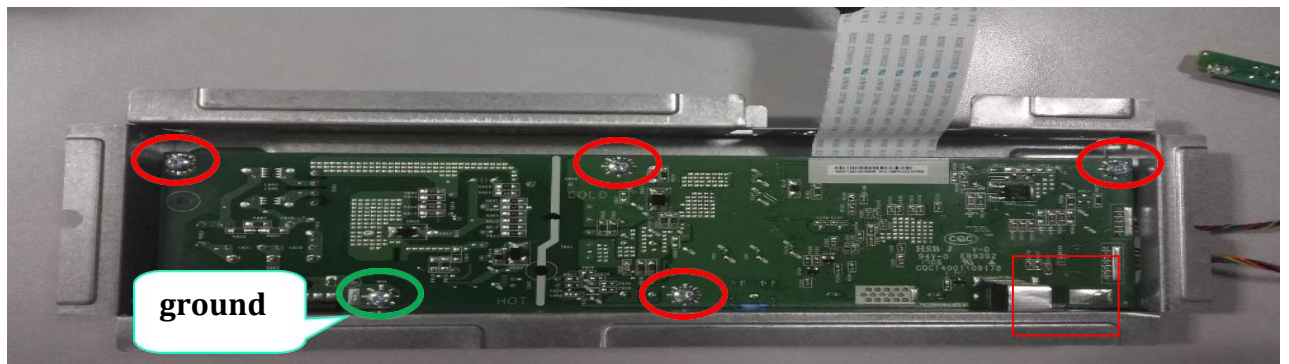
Step1

1. Insert the LVDS cable to M/B
2. Assemble M/B into the SHIELD PLATE



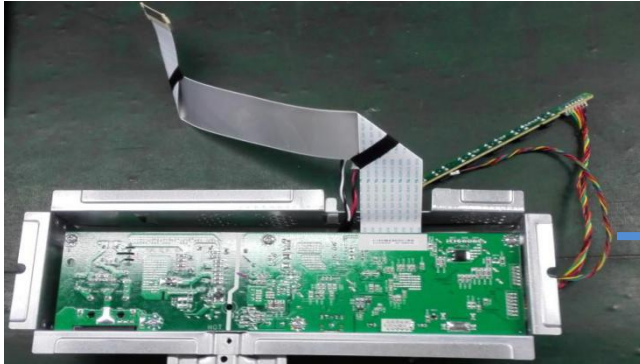
Step2

1. Insert wireharness from to M/B
2. Assemble M/B by locking 5 screws(M3*6)-(one ground screw)
3. Foam on the HDMI cable (EMI Solution)



Step3

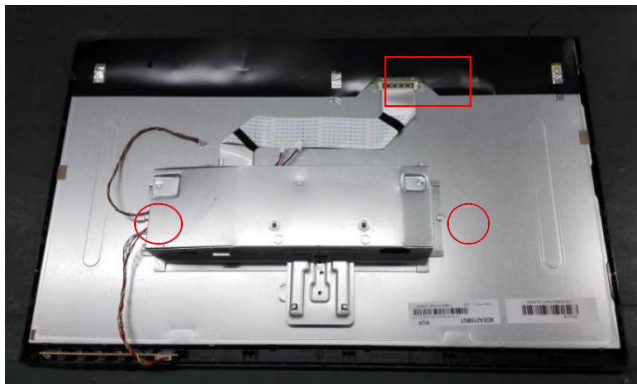
1. Stick the K/B FFC cable on the M/B



Step4

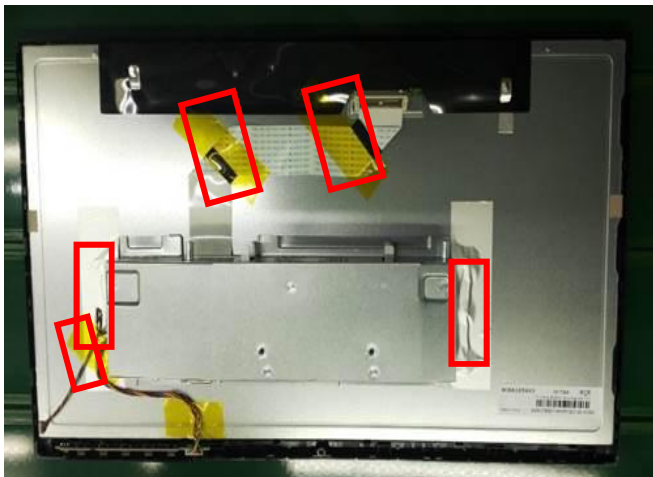
1. Isolation hood positioning

2.Chapaixian LVDS



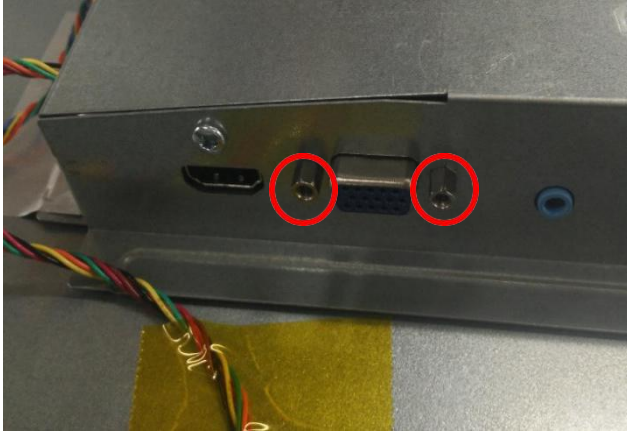
Step5

1.Aluminum foil and anti-static adhesive tape



Step6

1. Lock the hexagonal screws



Step7

1.Assembly the back cover into the panel



Step8

1.Assembly the back cover by locking 1 screws(M3*8)



Step9 Assembling stand



Disassembly—SOP D1918H

Disassembly procedures

Preparation before disassembly

4. clean the room for work
5. Identify the area for material
6. Check the position that the monitors be placed and the quantify of the monitor ;prepare the area for material flow,according to the actual condition plan the disassemble layout
7. Prepare the implement, equipments, materials as bellow:
 - 1) Press Fixture
 - 2) Working table
 - 3) Screw-Driver
 - 4) knife
 - 5) glove
 - 6) cleaning cloth
 - 7) ESD protection

Step1 disassemble the stand



Step2 Remove rear cabinet screw

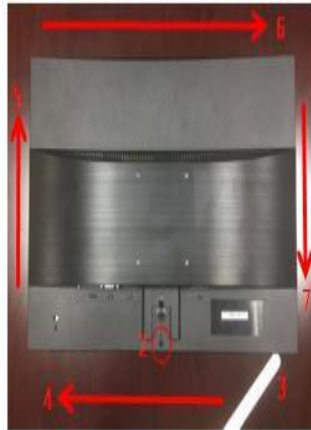


Step3 Disassemble CABI Back





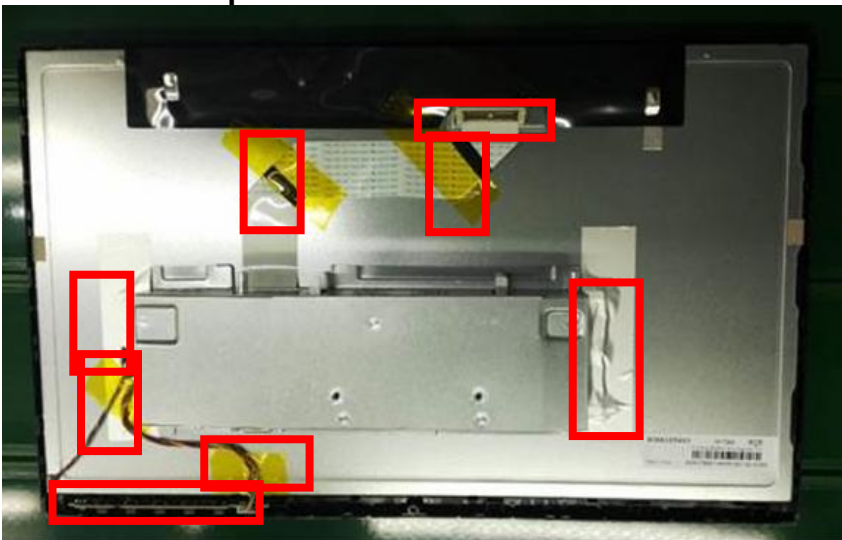
Phillips screwdriver and disassembly tool



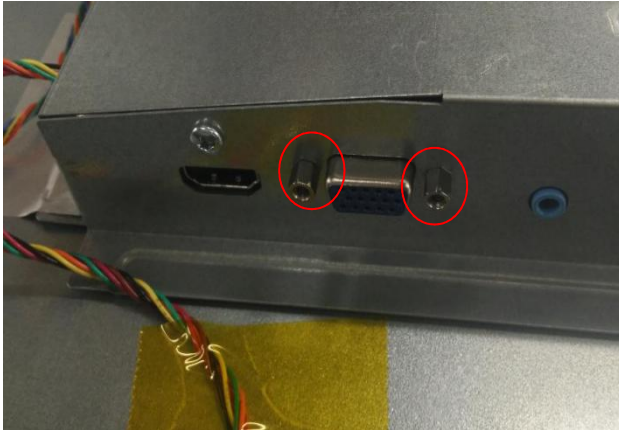
1. Tool preparation
2. Using Phillips screwdriver to release a screw.
3. Using disassembly tool to tooling hole.
- 4~7. Follow the counterclockwise direction to open rear cover and front bezel cover.

Step4

1. Take off the AL SHIELDING TAPES and pull out the LVDS cable
2. Remove the press button in the front K/B

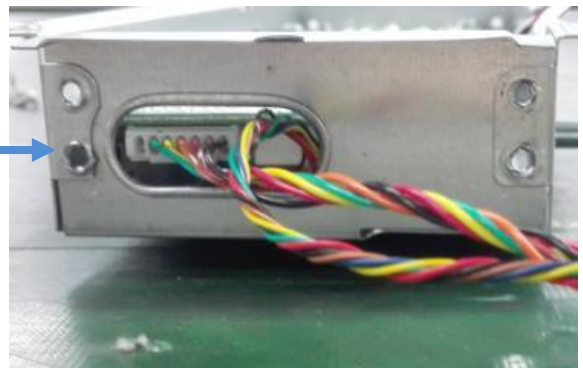
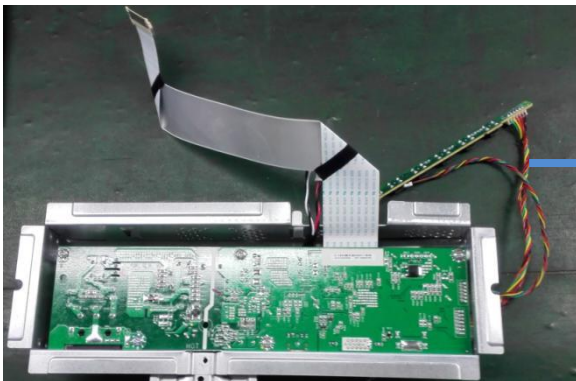


Step5 Unlock the screws



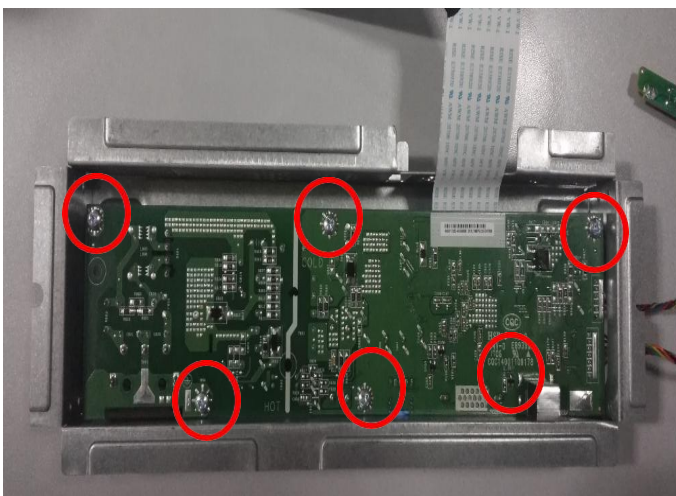
Step6

1. Disassemble the K/B and pull out the FFC cable

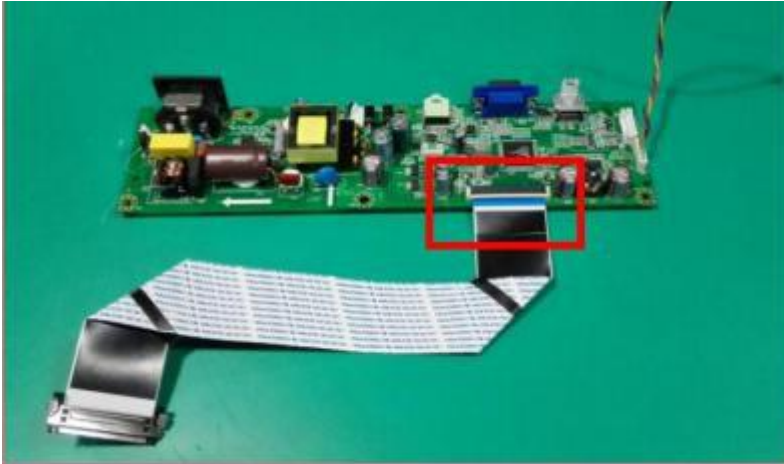


Step7

1. Unlock the screws and take out the M/B
2. Foam demolition



Step8 Pull out the LVDS cable



Assembly SOP for BOEA185WX3 321171850551001 (MNT)

Assembly procedures

Preparation before assembly

8. Cleanroom and working table
9. Clean clothes
10. Glove

Step 1

1. Take the black on the assembly line
2. Stick the glue in the red box



Step 2

1. Stick the label on the red box



BOE1320WX1-01 1D13C26 BOE
0090725411 K-Tronics (Suzhou) Technology Co., LTD
标签只提供贴付方向，数值不作参考
Made in C

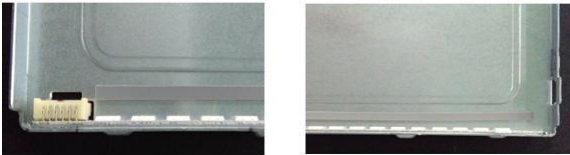
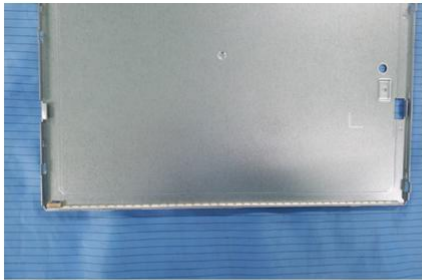
Step 3

1. Stick the block gine on the red box



Step 4

- 1. Tear off the glue from the LED light bar**
- 2. Install the LED light bar**



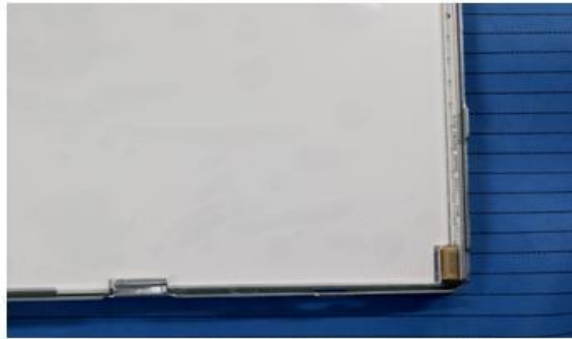
Step 5

- 1. Take the reflector plate into the back**



Step 6

- 1. Stick the protective film from the light guide plate**
- 2. Take the light guide plate into the back**



Step 7

1. Take the product on the workbench
2. Tear off the protective film from the light guide plate
3. Check for bad appearance of light guide plate
4. Take the membrane on the light guide plate
5. Pay to the rubber frame on the back



图 1



图 2



图 3



图 4

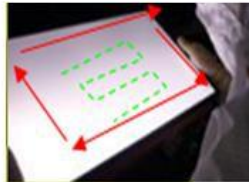


图 5



图 6

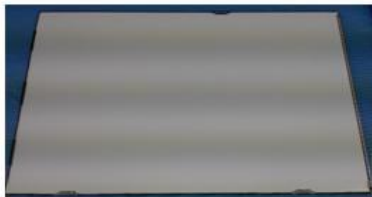
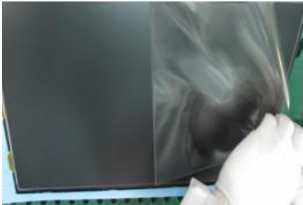


图 8

Step 8

1. From the glass on the underside to tear protective film
2. Put the cell in the plastic box



Step 9

1. From the upper to tear protective film on the glass



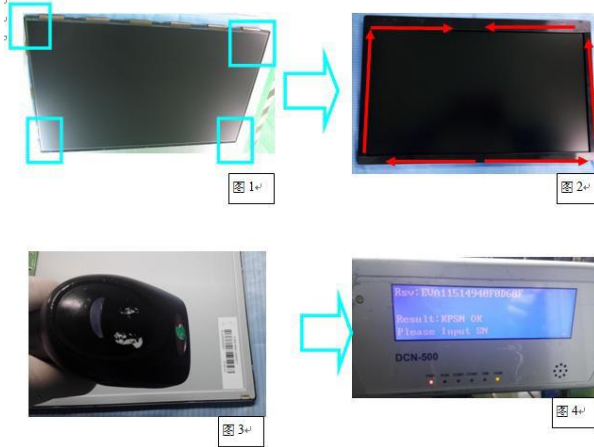
Step 10

1. Paste the conductive butier on the back
2. Paste the conductive butier on the cell



Step 11

1. Check the iron box appearance
2. Install the iron box to the product



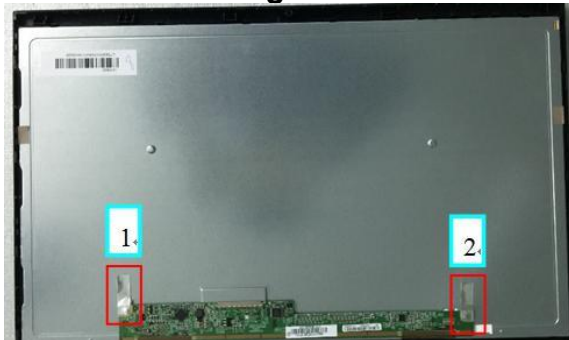
Step 12

1. Tear off the release paper from the red box
2. Set up the PCB



Step 13

1. Stick the block gine on the red box



Step 14

- 1. Tear off the release paper**
- 2. Stick the black rust on the blackborad**



Disassembly SOP for BOEA185WX3 321171850551001 (MNT)

Assembly procedures

Preparation before assembly

11. Cleanroom and working table
12. Clean cothes
13. Glove

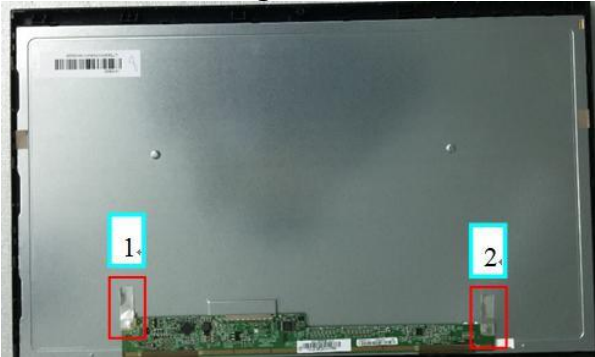
Step 1

- 1. Take the product on the assembly**
- 2. Tear off the black rust from the blackborad**



Step 2

1. Tear the block gine from the red box



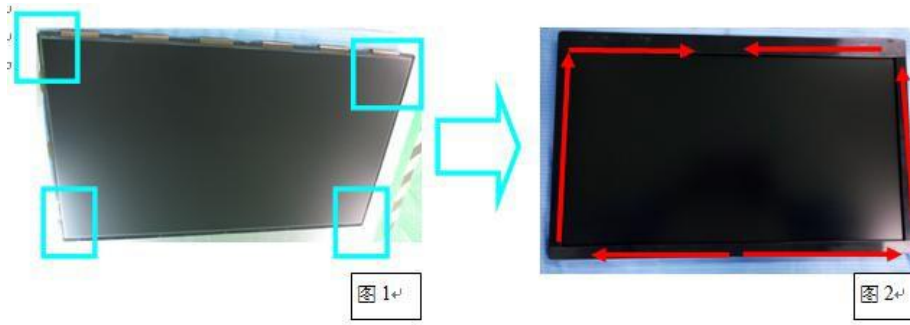
Step 3

1. Take apart the PCB



Step 4

1. Turn the product
2. Take apart the iron box



Step 5

1. Tear off the conductive butler from the back
2. Tear off the conductive butler from the cell



Step 6

1. Take apart the cell out of the backt



Step 7

1. Take the membrane out of the light guide plate



图 1



图 2



图 3



图 4

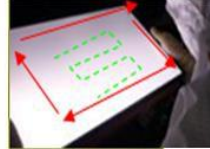


图 5



图 6



图 8

Step 8

1. Take the light guide plate out of the back



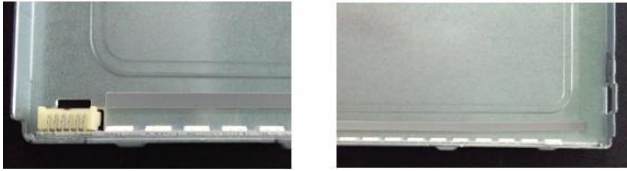
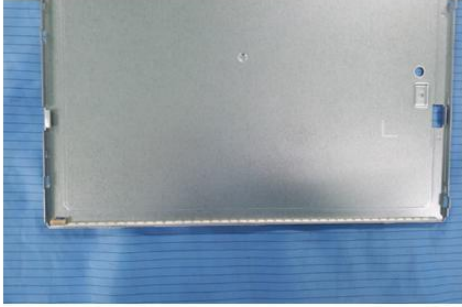
Step 9

1. Take the reflector plate out of the back



Step 10

1.Take the LED light bar out of the back



Step 11

1.Tear off the block gine from the red box



Step 12

1. Tear off the glue from the red box

